

# APPENDIX D

## Beyond Prevention: Site-Specific Invasive Plant Treatment Project

Clallam, Grays Harbor, Jefferson, and  
Mason Counties in the State of Washington

### Roadside Treatment Areas with High Potential to Deliver Herbicide





The following segments make up the roadside treatment areas associated with thich potential for herbicide delivery due to their proximity to fish habitat and/or Riparian Reserves, and stream crossing density. The roads are organized by 6<sup>th</sup> field watershed. Approximately 1,650 miles of roads within treatment areas have high potential for herbicide delivery, amounting to about half the road mileage within roadside treatment areas (see map which follows). Treatments along these roads may have special design features depending on alternative.

<b>6<sup>th</sup> Field Watershed No.</b>	<b>6<sup>th</sup> Field Watershed Name</b>	<b>Road Number</b>
171001010402	HEADWATERS SOL DUC RIVER	2918015
		2918100
		2918110
		2918200
		2918225
		2918230
		2920000
		2920020
		2920100
		2931180
		2931200
		2931250
		2931260
		2931265
171001010403	UPPER SOL DUC RIVER	2071
		2900000
		2900493
		2900500
		2900520
		2900650
		2900735
		2920000
		2920190
		2929000
		2929045
		2929055
		2929070
		2931155
		2978000
		2978015
		2978025
		2978030
		2978045
		2978048
		2978085
		3040595
		3071000
		3071015
171001010404	MIDDLE SOL DUC RIVER	2923070
		2923077
		3000000
		3000140
		3000200
		3000235
		3000295

6 <sup>th</sup> Field Watershed No.	6 <sup>th</sup> Field Watershed Name	Road Number
		3000300
		3000320
		3006000
		3006050
		3040000
		3040410
		3040900
		3067000
		3067050
		3067055
		3100100
		3100105
171001010405	BOCKMAN CREEK	2902000
		2902270
		2902278
		2902350
		2902355
		2902360
		2903000
		2903025
		2903035
		3100100
171001010406	LOWER SOL DUC RIVER	2902000
		2902100
		2902278
		2902300
		2902350
		2924000
		2924015
171001010501	NORTH FORK CALAWAH RIVER	2900000
		2900520
		2900540
		2900700
		2900715
		2900725
		2900730
		2900735
		2900800
		2900810
		2900815
		2900818
		2900820
		2900825
		2900830
		2902000
		2903000
		2912000
		2912048
		2922000
		2922015
		2922020
		2922035

6 <sup>th</sup> Field Watershed No.	6 <sup>th</sup> Field Watershed Name	Road Number
		2922060
		2922095
		2922220
		2922240
		2923000
		2923047
		2923050
		2923055
		2923060
		2923065
		2923077
		2923078
		2924000
		2924015
		2929000
		2929030
		2929045
		2929050
		2978000
171001010502	SOUTH FORK CALAWAH RIVER	2900000
		2900070
		2900072
		2900078
		2900090
		2900100
		2900105
		2900107
		2900110
		2900200
		2900220
		2900280
		2900400
		2912000
		2912040
		2912050
		2912060
		2912063
		2920260
		2922000
		2922070
		2922100
		2922130
		2922145
		2922146
		2922200
		2922210
		2922220
		2922235
		2923000
		2923015
		2923030
		2923035

6 <sup>th</sup> Field Watershed No.	6 <sup>th</sup> Field Watershed Name	Road Number
		2923040
		2923047
		2923050
		2932000
		2932013
		2932015
		2932150
		2952000
171001010503	CALAWAH RIVER	2932000
		2932030
		2932090
171001010603	LOWER BOQACHIEL RIVER	2932000
		2932100
		2932160
		2932220
171001020104	SAMS RIVER	2180000
		2180400
		2180402
		2180500
		2180501
		2180502
		2180600
171001020105	MATHENY CREEK	2100037
		2140000
		2140030
		2140040
		2140130
		2140200
		2140215
		2140221
		2140231
		2160000
		2160050
		2160060
		2160080
		2160083
		2160086
		2160100
		2170020
171001020106	MIDDLE QUEETS RIVER	2170030
		2180026
		2180030
171001020107	SALMON RIVER	2100030
		2120000
		2120030
		2140030
		2140090
		2140190
171001020405	BIG CREEK/UPPER QUINALUT RIVER	2160100
		2190240

6 <sup>th</sup> Field Watershed No.	6 <sup>th</sup> Field Watershed Name	Road Number
		2204200
		2272310
		2272400
171001020406	QUINAULT LAKE	2190513
		2272140
		2272170
171001020501	COOK CREEK	2258020
		2259000
		2259050
171001020502	MIDDLE QUINAULT RIVER	2190110
		2258000
		2258042
		2280000
171001040203	MIDDLE FORK SATSOP RIVER	2300340
		2341000
		2341040
		2341100
		2341110
		2341130
		2341200
		2341210
		2341230
		2341300
		2341320
		2341340
		2341400
		2341510
		2341530
		2342230
		2345000
		2345110
		2345300
		2345400
		2350240
		2350260
		2352300
		2352320
		2352340
		2352420
		2356000
		2356200
		2356520
		2356540
		2364000
		2364020
		2364080
		2365000
		2365100
		2365160
		2365220
		2365230
		2365400

6 <sup>th</sup> Field Watershed No.	6 <sup>th</sup> Field Watershed Name	Road Number
		2366100
		2366101
		2366300
		2366400
		2366500
		2366600
		2366610
		2366700
		2366800
		2366900
171001040204	UPPER WEST FORK SATSOP RIVER	2260100
		2260110
		2260130
		2260160
		2260200
		2260230
		2260250
		2300000
		2300400
		2300420
		2300450
		2300480
		2300490
		2300500
		2300510
		2300530
		2300531
		2300533
		2300535
		2300560
		2300570
		2300620
		2364000
		2364080
		2364200
		2364260
		2364380
		2365000
		2365120
		2365200
		2367000
		2367100
		2367110
		2367111
		2367150
		2367200
		2367300
		2368000
		2368210
		2368300
		2370100
		2370400



6 <sup>th</sup> Field Watershed No.	6 <sup>th</sup> Field Watershed Name	Road Number
		2370500
		2370501
		2370502
		2370600
		2370601
		2370602
		2370603
		2370700
		2371000
		2371200
		2371230
		2371260
		2371280
		2371300
		2372021
		2372040
		2372041
		2372060
		2372100
		2372110
		2372200
		2372220
		2372240
		2372260
		2372280
		2372300
		2372310
		2372311
		2372330
		2372331
		2372350
		2372370
		2372400
		2372420
		2372461
		2372500
		2372600
171001040301	UPPER WYNOOCHEE RIVER	2270000
		2270120
		2270130
		2270140
		2270181
		2270200
		2270220
		2270240
		2270241
		2270260
		2270280
		2270290
		2270310
		2270330

<b>6<sup>th</sup> Field Watershed No.</b>	<b>6<sup>th</sup> Field Watershed Name</b>	<b>Road Number</b>
		2270350
		2270370
		2270400
		2270401
		2270441
		2270460
		2270500
		2270510
		2270530
		2270560
		2270580
		2270600
		2270640
		2270660
		2270670
		2270680
		2270690
		2270760
		2275000
		2275100
		2275263
		2275290
		2275291
		2275300
		2275310
		2275400
		2294130
		2294340
		2294371
		2294400
		2294440
		2294460
		2294461
		2294480
		2294540
		2294541
		2294560
		2372600
		2372650
		2372700
		2372710
		2372800
		2372820
		2372840
171001040302	MIDDLE WYNOOCHEE RIVER	2200100
		2200101
		2200140
		2200143
		2200180
		2200340
		2200350
		2200460

<b>6<sup>th</sup> Field Watershed No.</b>	<b>6<sup>th</sup> Field Watershed Name</b>	<b>Road Number</b>
		2200481
		2281000
		2281031
		2281032
		2281033
		2281034
		2281100
		2281110
		2281130
		2281150
		2281153
		2281155
		2281180
		2281200
		2281300
		2281350
		2281351
		2281370
		2294000
		2294010
		2294130
		2294135
		2294150
		2294500
		2294540
		2294560
		2294580
		2294581
		2294600
		2294620
		2294640
		2294641
		2300660
		2371000
		2371180
		2371200
		2371210
		2371230
		2372021
		2372040
171001050101	WEST FORK HUMPTULIPS RIVER	2200010
		2203040
		2204000
		2204060
		2204068
		2204072
		2204080
		2204090
		2204190
		2204192
		2204194
		2204200

6 <sup>th</sup> Field Watershed No.	6 <sup>th</sup> Field Watershed Name	Road Number
		2204210
		2205020
		2207000
		2207013
		2207015
		2207030
		2207040
		2207060
		2207130
		2207150
		2208032
		2208043
		2220000
		2220020
		2220023
		2220030
		2220031
		2220090
		2220110
		2220120
		2220129
		2258000
		2258031
		2258042
		2258100
		2258120
		2259000
		2259040
		2259043
		2259045
		2259048
		2259050
		2259070
		2259073
		2259078
		2259149
		2280000
		2280040
		2280050
		2280070
171001050102	EAST FORK HUMPTULIPS RIVER	2200000
		2200015
		2200018
		2200020
		2200025
		2200460
		2200464
		2200465
		2204190
		2205000
		2205020
		2205021

6 <sup>th</sup> Field Watershed No.	6 <sup>th</sup> Field Watershed Name	Road Number
		2205030
		2205050
		2205060
		2206019
		2206020
		2206025
		2207000
		2207030
		2207040
		2207050
		2207120
		2207130
		2207150
		2208152
		2210015
		2210060
		2210073
		2210100
		2275260
		2275280
		2281000
		2281030
		2281031
		2281310
		2281330
		2281350
		2281480
		2281490
171001050103	STEVENS CREEK	2220030
		2259000
		2259040
		2259042
		2259044
171100170101	UPPER NORTH FORK SKOKOMISH RIVER	2451000
		2451014
		2451020
		2451115
171100170102	MIDDLE NORTH FORK SKOKOMISH RIVER	2400000
		2419000
		2419014
		2451000
		2451100
	2464000	
171100170103	LOWER NORTH FORK SKOKOMISH RIVER	2340270
		2340360
		2340362
		2340430
		2340433
171100170104	UPPER SOUTH FORK SKOKOMISH RIVER	2300000
		2300300
		2300330

6 <sup>th</sup> Field Watershed No.	6 <sup>th</sup> Field Watershed Name	Road Number
		2300340
		2300350
		2340290
		2340291
		2340400
		2340430
		2340431
		2340433
		2340435
		2340450
		2340500
		2340540
		2340543
		2350000
		2352000
		2352300
		2353000
		2353160
		2353180
		2353200
		2353212
		2353230
		2353231
		2353232
		2353300
		2353320
		2353340
		2353350
		2353360
		2353380
		2354000
		2354200
		2354210
		2354300
		2354310
		2354330
		2354400
		2354420
		2354500
		2354620
		2355000
		2355100
		2355200
		2355300
		2356000
		2356100
		2356200
		2356300
		2356560
		2360000
		2360200
		2360300

6 <sup>th</sup> Field Watershed No.	6 <sup>th</sup> Field Watershed Name	Road Number
		2360400
		2361000
		2361100
		2361200
		2361210
		2361230
		2361500
		2361530
		2361600
		2361610
		2361630
		2361650
		2361660
		2361700
		2361800
		2363000
		2363130
		2363131
		2363173
		2364000
		2364040
		2364060
		2364080
		2364100
		2364110
		2364130
		2364150
171100170105	LOWER SOUTH FORK SKOKOMISH RIVER	2300000
		2300100
		2300150
		2300170
		2300200
		2300210
		2300221
		2340046
		2340112
		2340122
		2340124
		2340126
		2340130
		2340230
		2340290
		2341000
		2342000
		2342100
		2342230
		2343000
		2343011
		2345000
		2350000
		2350100
		2350102

6 <sup>th</sup> Field Watershed No.	6 <sup>th</sup> Field Watershed Name	Road Number
		2350120
		2350140
		2350160
		2350200
		2351000
		2351100
		2351180
		2351200
		2351201
		2351300
		2351400
		2351500
		2351510
		2351600
		2351700
		2352000
		2352200
		2352360
		2352420
171100180201	LILLIWAUP CREEK	2400016
		2400026
		2419000
		2441000
		2441014
		2464000
		2469000
		2469011
		2469012
		2471018
		2471020
171100180202	FULTON CREEK/WAKETICKEH CREEK	2503000
		2503011
		2503035
		2510000
		2510200
		2510210
		2530200
		2530211
		2530212
		2530213
171100180301	JEFFERSON CREEK	2401012
		2401015
		2401020
		2401112
		2401114
		2401120
		2421000
		2441000
		2441200
		2441211
		2441230
		2469000



6 <sup>th</sup> Field Watershed No.	6 <sup>th</sup> Field Watershed Name	Road Number
		2469011
		2469012
		2471013
		2471020
		2471022
171100180302	MAINSTEM HAMMA HAMMA RIVER	2421000
		2500000
		2500060
		2500065
		2502000
		2502030
		2572000
		2572012
		2572013
171100180402	LOWER DUCKABUSH RIVER	2510000
		2510040
		2510044
		2510048
		2510060
		2510070
		2510075
		2530000
		2530016
		2530030
		2530031
		2530033
		2530034
		2530035
		2530036
		2530100
		2530210
171100180502	LOWER DOSEWALLIPS RIVER	2610010
		2610012
		2610040
		2620030
		2620035
		2620036
		2620044
		2620046
		2620050
		2620051
		2620056
		2620064
		2630020
		2630050
		2630060
		2630069
171100180601	UPPER BIG QUILCENE RIVER	2620100
		2650090
		2700000
		2700090
		2700100

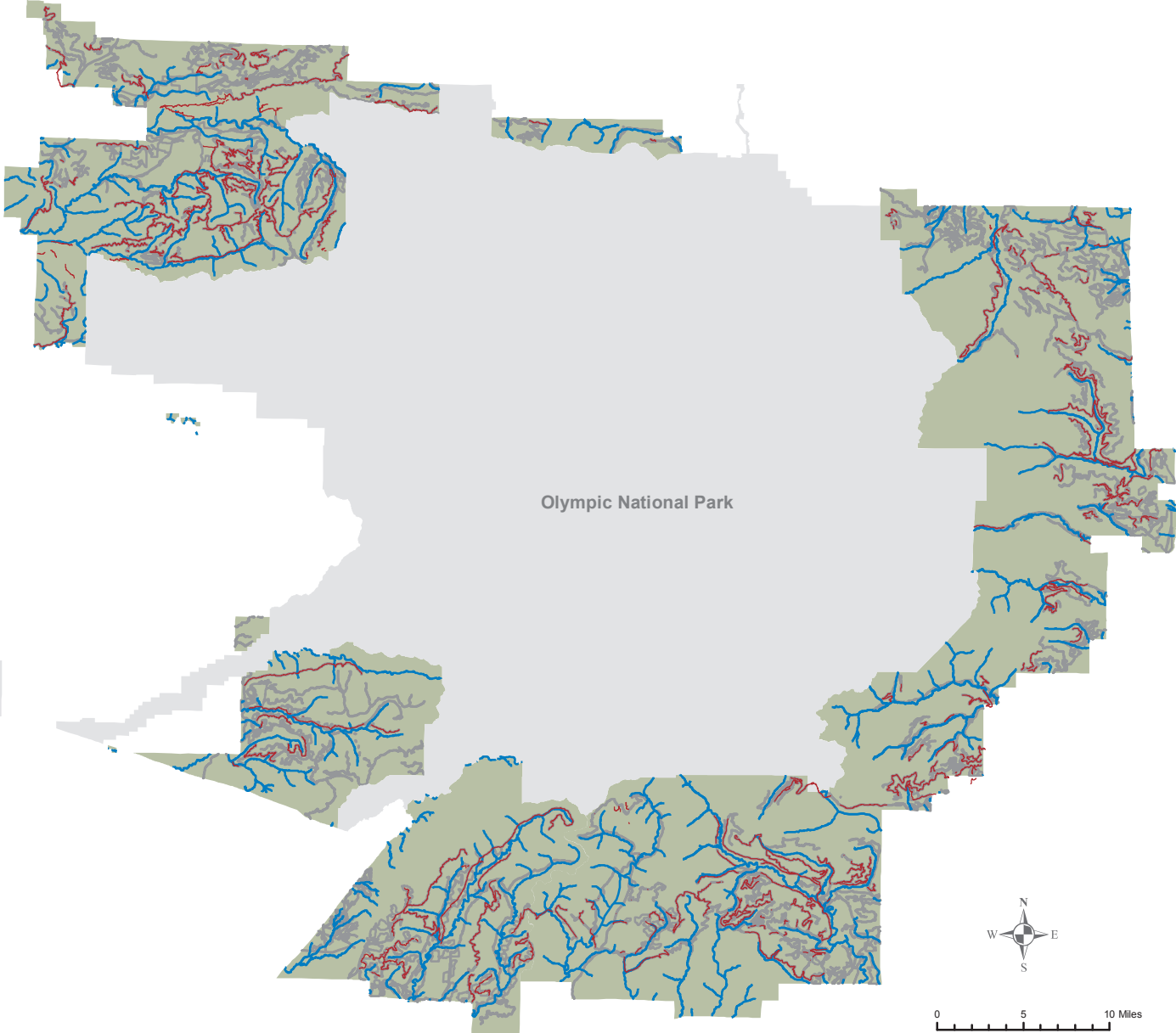
6 <sup>th</sup> Field Watershed No.	6 <sup>th</sup> Field Watershed Name	Road Number
		2700120
		2700130
		2700140
		2700150
		2700160
		2700170
		2700212
		2740000
		2740050
		2740060
		2740080
		2740100
		2740110
		2740113
		2740114
		2750000
		2750010
		2750020
		2750024
171100180602	LOWER BIG QUILCENE RIVER	2620000
		2620041
		2620050
		2620060
		2620062
		2620064
		2620070
		2620090
		2620100
		2620103
		2620105
		2700000
		2700010
		2700040
		2700042
		2700043
		2700080
		2730000
		2730011
		2730100
		2740000
171100180701	SPENCER CREEK/MARPLE CREEK	2620000
		2620032
		2620035
		2620036
		2620041
		2620043
		2620044
		2620060
		2730000
171100180702	LITTLE QUILCENE RIVER	2700010
		2700240
		2700250

6 <sup>th</sup> Field Watershed No.	6 <sup>th</sup> Field Watershed Name	Road Number
		2700270
		2700280
		2700281
		2700310
		2700330
		2700333
		2700334
		2700350
		2800000
		2800010
		2800020
		2800040
		2800050
		2800080
		2800083
		2851000
171100200101	SNOW CREEK/SALMON RIVER	2840000
		2840150
		2845040
		2845070
		2845120
		2850060
		2851080
		2852050
171100200201	JIMMY-COME-LATELY CREEK	2800320
		2800350
		2800362
		2840000
		2840090
		2840150
		2845070
		2845073
		2845120
		2845200
		2850000
		2850120
		2850122
		2850124
		2855050
		2855070
171100200301	UPPER DUNGENESS RIVER	2860000
		2860120
		2860130
		2860140
		2860141
		2860160
		2860170
171100200302	MIDDLE DUNGENESS RIVER	2800000
		2800121
		2800130
		2800200
		2800210

6 <sup>th</sup> Field Watershed No.	6 <sup>th</sup> Field Watershed Name	Road Number
		2800218
		2800220
		2800232
		2800242
		2800255
		2800262
		2800280
		2800282
		2800311
		2810000
		2810020
		2810090
		2810105
		2830000
		2830020
		2860000
		2860011
		2860070
		2860090
		2870000
		2870220
		2880000
171100200304	LOWER GRAY WOLF RIVER	2870180
		2875000
		2875120
		2875125
		2878109
		2880000
		2880050
171100200305	CANYON CREEK/PATS CREEK	2800000
		2800310
		2800311
		2800321
		2870031
		2870050
		2870059
		2870100
		2870120
		2875011
		2875012
		2875020
		2875070
		2877000
		2877010
		2878030
		2878040
		2878050
		2878110
		2878111
		2878112
		2878115
		2878120

6 <sup>th</sup> Field Watershed No.	6 <sup>th</sup> Field Watershed Name	Road Number
		2878130
		2880000
171100200401	MCDONALD CREEK/SIEBERT CREEK	2877090
		2877140
		2877150
		2877160
171100200507	LITTLE RIVER/HUGHES CREEK	3030000
		3030011
		3030012
		3030014
		3030015
171100200508	LOWER ELWHA RIVER	3050012
		3050013
		3050150
		3062000
171100210102	CRESENT LAKE/LYRE RIVER	3068000
		3068150
		3079000
171100210103	EAST TWIN RIVER	3040000
		3040015
		3040025
		3079200
171100210104	WEST TWIN RIVER	3000400
		3000470
		3000600
		3000830
		3000852
		3040000
		3040200
171100210105	DEEP CREEK	3000200
		3000250
		3000260
		3000262
		3000300
		3000370
		3000400
		3000415
		3000450
		3040000
		3040395
		3040400
171100210201	PYSHT RIVER	3000227
		3100300
		3100360
		3100400
		3100420
		3100430
		3100432
		3116000
		3116100
		3116200
171100210203	HOKO RIVER	3100100

# Beyond Prevention: Invasive Plant Treatment Project Roadside Treatment Areas with High Potential for Herbicide Delivery Olympic National Forest



**Legend**

- Roads with High Potential for Herbicide Delivery
- Roadside Treatment Areas
- Fish bearing Streams



No warranty is made by the US Forest Service as to the accuracy, reliability, or completeness of these data for individual or aggregate use with other data. Original data were compiled from various sources. This information may not meet National Map Accuracy Standards. This product was developed through digital means and may be updated without notification.