

**VBL-10-S-USA****VisionBlue® 0.06% Trypan Blue Ophthalmic Solution****Capsule staining to visualize the capsulorhexis**

A complete capsulorhexis is required for performing a safe phacoemulsification procedure. Inadequate visualization of the anterior lens capsule may result in an incomplete capsulorhexis, which carries a high risk of radial capsule tears and associated complications.

VisionBlue® capsule staining therefore facilitates the performance of a capsulorhexis in the absence of a red fundus reflex, and reduces the risk of capsulorhexis-related complications by better visualization of radial capsule tears. VisionBlue® can be injected directly onto the anterior lens capsule and stains the capsule instantly. The capsule staining procedure is therefore quick and easy to perform.

VBL-10-S-USA VisionBlue® 0.06% Trypan Blue Ophthalmic Solution  
(sterile, 10 syringes of 0.5 mL/box)

**Distributed in the USA by Dutch Ophthalmic USA**

&lt; BACK

RESPONSE  
BY E-MAIL

&lt;&lt; INDEX

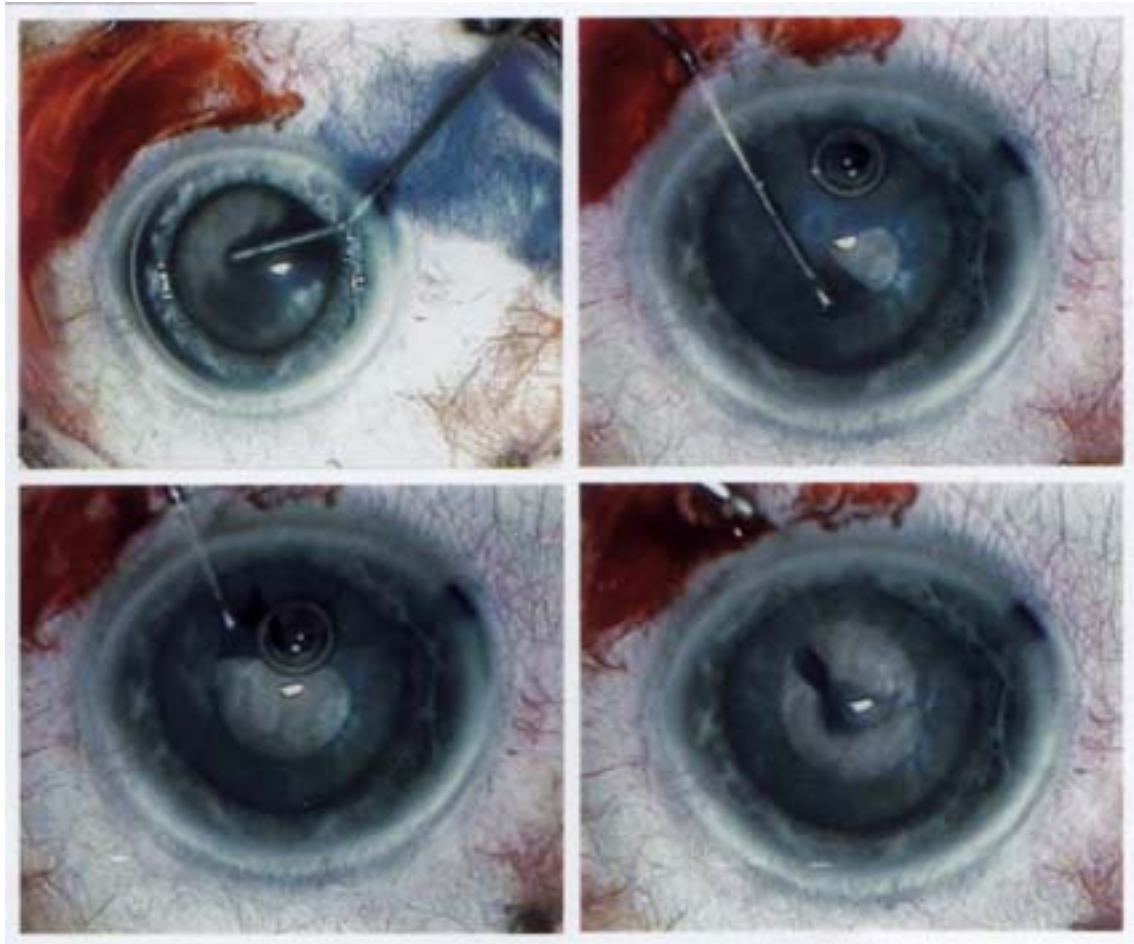
## **VisionBlue® capsule staining to visualize the capsulorhexis in cataract surgery**

- Greatly enhanced visualization of the capsulorhexis in eyes with mature cataracts or narrow pupil, in which the anterior lens capsule is often hardly visible to the surgeon during surgery
- Persistent and clear outline of the peripheral rim of the capsulorhexis by the contrast between the stained rim and the adjacent lens mass
- Reduces risk of capsulorhexis-related complications by better visualization of radial capsule tears
- Visualization of the leading edge of a “lost” capsulorhexis.

## **Clear Advantages of VisionBlue® :**

- VisionBlue® can be injected directly onto the anterior lens capsule and stains the capsule instantly
- VisionBlue® greatly enhances the contrast between the anterior and posterior lens capsule and the adjacent tissue structures
- Ready to use in syringe, no mixing required
- Shelf life 24 months.

To visualize the capsulorhexis during its performance in the absence of a red fundus reflex, for example in eyes with mature cataract, D.O.R.C. developed VisionBlue®, a dye to safely stain the anterior lens capsule during surgery. By injecting VisionBlue® in an airfilled anterior chamber, the anterior capsule is stained without affecting the endothelium. After starting the capsulorhexis, the blue stained capsule can be easily distinguished from the underlying unstained lenticular tissue.



Intraoperative views of a capsulorhexis after VisionBlue® staining of the anterior capsule in an eye with a mature cataract. the VisionBlue® can be easily distinguished from the underlying gray lenticular tissue. (Photographs by courtesy of Dr. Gerrit R. J. Melles.)

## Get around town on the Metro

Here's a quick look on how to best use the rail system in Washington, D.C.

The "Metro" is the rail system that runs throughout Washington, D.C., and the metropolitan area.



Washington Metro provides transportation throughout the area.

Source: C



## Vision Blue®

FDA Approved Capsule Staining  
to Visualize the Capsulorhexis



Staining of the anterior lens capsule with Vision Blue® facilitates the visualization of the capsulorhexis, by creating a contrast between the blue stained capsule and the non-stained underlying lens mass.



### Clear Advantages of Vision Blue®:

- Vision Blue® can be injected directly onto the anterior lens capsule
- Vision Blue® greatly enhances the contrast between the anterior and posterior lens capsule and the adjacent tissue structures
- Ready to use in syringe, no mixing required

### Order Information

Vision Blue® is available in sterile packs of 10 syringes of .05ml/box  
Call: (800) 75-DUTCH or (603) 642-8468  
or E-mail: [sales@dutchophthalmicusa.com](mailto:sales@dutchophthalmicusa.com)



DORC International b.v., Zijdland, Holland  
Phone: 0031 151-458000  
Fax: 0031 151-458060  
E-mail: [sales@dorc.nl](mailto:sales@dorc.nl)  
Web: [www.dorc.nl](http://www.dorc.nl)



Dutch Ophthalmic USA, Kingston, NH  
Phone: (800) 75-DUTCH or (603) 642-8468  
Fax: (603) 642-8465  
E-mail: [sales@dutchophthalmicusa.com](mailto:sales@dutchophthalmicusa.com)

Here's a quick Q&A on how to get around.

#### Metro hours of operation

Opens: 5 a.m. weekdays; 7 a.m. weekends

**Closes:** Midnight, Sunday to Thursday; 3 a.m. Friday and Saturday nights

#### Finding a Metro station

Tall brown columns with a large "M" identify the station entrances. Color stripes on the column show lines that serve the station.

There are five lines — Blue, Red, Yellow, Green, and Orange; the Green and Yellow lines serve the Washington Convention Center.

#### What's the fare?

**Regular fare** (In effect on weekdays from opening to 9:30 a.m., 3-7 p.m., and 2 a.m. to closing)  
\$1.35 minimum  
\$3.90 maximum

**Reduced fare** (All other times)  
\$1.35 minimum  
\$1.85 mid-range  
\$2.35 maximum

**Children's fares:** Up to two children, 4 years and younger, ride free with each adult that pays full fare. Children 5 and older pay adult fares.

#### Metro senior-disabled fares (All times)

Half of the regular fare not to exceed \$1.95

For fares between stations, visit [www.wmata.com](http://www.wmata.com) and use the Trip Planner.

#### Other payment options

##### One-Day Pass — \$6.50

Valid for one day of unlimited Metrorail travel on weekdays after 9:30 a.m. or all day on Saturdays, Sundays, or federal holidays. Pass expires at the end of the operating day — 3 a.m. on Fridays and Saturdays, midnight on other nights.

##### Seven-Day Short Trip Pass — \$22

Valid for seven consecutive days for Metrorail trips that cost up to \$2.20 between 5:30-9:30 a.m. and 3-7 p.m. on weekdays. Pass is valid for any rail trip at other times. If trip costs more than \$2.20, you must use the Exitfare machine to pay additional fare.

##### Seven-Day Fast Pass — \$32.50

Valid for seven consecutive days of unlimited Metrorail travel

#### How do I pay?

You will need a pass or farecard to ride the Metro. Farecards hold from \$1.25 to \$45. Farecards are available at fare vending machines in the stations or you can buy farecards worth \$10, \$15, or \$20 online.

There are two kinds of farecard vending machines. The machines marked Farecards sell single cards. Those marked Passes/Farecards accept cash and credit cards, and sell passes, and single or multiple farecards.

Visit [www.wmata.com](http://www.wmata.com) for more information.

Source: Washington Metropolitan Area Transit Authority