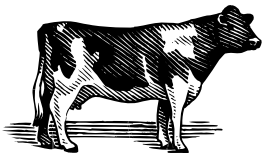


MILK PRODUCTION



When combining all six states, New England ranked thirteenth in the nation for milk production in 2006. Milk output in the six-state region totaled 4.1 billion pounds in 2006, down three percent from the previous

year due to declining herd size. The annual number of milk cows on New England dairies during 2006 averaged 224,100 head, a loss of 6,000 head from the 2005 average. Annual milk production

per cow averaged 18,398 pounds, compared with 18,386 pounds per cow a year earlier. Milk from the region's dairy farms accounted for 2.3 percent of the total milk produced in the United States during 2006. Cash receipts from milk sales continued as the top contributor to farm marketings in New England for 2006, with \$573 million in sales. Milk sales were off 16 percent from 2005's \$681 million due to fewer pounds marketed and less money received per cwt. Dairy producers received an average of \$13.99 per cwt for milk produced in 2006, \$2.23 per cwt less than 2005, and \$3.17 per cwt less than 2004.

ANNUAL MILK: Production and Value, 1997 – 2006

State and Year	Average Number of Milk Cows 1,000 Head	Production of Milk and Milkfat					Value of Milk Produced ^{1/} 1,000 Dollars
		Per Milk Cow		Percentage of Fat in All Milk Produced Percent	Total		
		Milk Pounds	Milkfat		Milk Million Pounds	Milkfat	
Connecticut							
1997	30.0	16,967	618	3.64	509.0	18.5	77,194
1998	30.0	17,633	638	3.62	529.0	19.1	87,285
1999	29.0	17,931	654	3.65	520.0	19.0	84,240
2000	27.0	17,778	654	3.68	480.0	17.7	67,680
2001	25.0	18,240	666	3.65	456.0	16.6	73,416
2002	24.0	18,625	684	3.67	447.0	16.4	59,004
2003	22.0	18,773	695	3.70	413.0	15.3	56,168
2004	20.0	19,600	717	3.66	392.0	14.3	67,816
2005	20.0	19,200	710	3.70	384.0	14.2	63,360
2006	19.0	19,316	720	3.73	367.0	13.7	52,848
Maine							
1997	41.0	16,146	588	3.64	662.0	24.1	96,964
1998	41.0	16,585	610	3.68	680.0	25.0	110,840
1999	42.0	16,405	604	3.68	689.0	25.4	110,240
2000	39.0	17,128	644	3.76	668.0	25.1	94,188
2001	38.0	17,211	625	3.63	654.0	23.7	105,294
2002	37.0	17,730	647	3.65	656.0	23.9	87,248
2003	35.0	17,829	660	3.70	624.0	23.1	88,608
2004	34.0	18,000	666	3.70	612.0	22.6	110,160
2005	33.0	18,030	658	3.65	595.0	21.7	99,960
2006	32.0	17,938	649	3.62	574.0	20.8	84,378
Massachusetts							
1997	26.0	16,692	618	3.70	434.0	16.1	67,073
1998	26.0	16,846	622	3.69	438.0	16.2	74,460
1999	25.0	16,800	620	3.69	420.0	15.5	69,300
2000	22.0	17,091	634	3.71	376.0	13.9	53,016
2001	21.0	17,000	627	3.69	357.0	13.2	58,191
2002	21.0	17,190	634	3.69	361.0	13.3	47,652
2003	19.0	17,474	652	3.73	332.0	12.4	45,152
2004	17.0	17,412	648	3.72	296.0	11.0	51,504
2005	17.0	17,059	640	3.75	290.0	10.9	47,850
2006	16.0	17,375	659	3.79	278.0	10.5	40,032

See footnote after the New England table.

ANNUAL MILK: Production and Value, 1997 – 2006

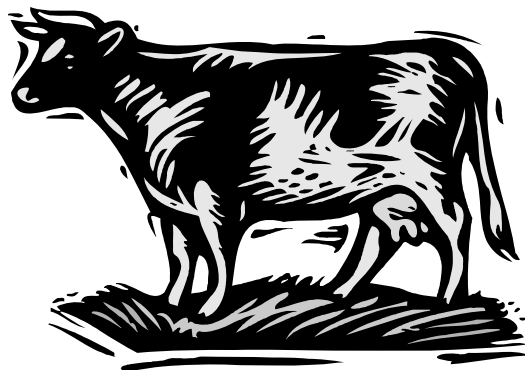
State and Year	Average Number of Milk Cows	Production of Milk and Milkfat					Value of Milk Produced ^{1/}
		Per Milk Cow		Percentage of Fat in All Milk Produced	Total		
		Milk	Milkfat		Milk	Milkfat	
	1,000 Head	Pounds		Percent	Million Pounds		1,000 Dollars
New Hampshire							
1997	20.0	16,400	618	3.77	328.0	12.4	47,888
1998	20.0	16,650	621	3.73	333.0	12.4	54,279
1999	19.0	16,895	630	3.73	321.0	12.0	50,397
2000	18.0	17,333	652	3.76	312.0	11.7	43,680
2001	18.0	17,889	673	3.76	322.0	12.1	52,486
2002	18.0	18,222	682	3.74	328.0	12.3	42,640
2003	16.0	19,063	719	3.77	305.0	11.5	41,785
2004	16.0	18,938	708	3.74	303.0	11.3	52,419
2005	16.0	18,875	710	3.76	302.0	11.4	49,226
2006	15.0	19,533	738	3.78	293.0	11.1	41,606
Rhode Island							
1997	2.0	15,950	558	3.50	31.9	1.1	4,626
1998	2.1	15,714	581	3.70	33.0	1.2	5,379
1999	2.0	15,500	561	3.62	31.0	1.1	4,836
2000	1.8	15,667	577	3.68	28.2	1.0	4,004
2001	1.4	16,571	611	3.69	23.2	0.9	3,805
2002	1.4	16,357	595	3.64	22.9	0.8	3,046
2003	1.3	17,000	636	3.74	22.1	0.8	2,984
2004	1.2	16,333	622	3.81	19.6	0.7	3,508
2005	1.1	17,000	643	3.78	18.7	0.7	3,142
2006	1.1	17,273	667	3.86	19.0	0.7	2,812
Vermont							
1997	160.0	16,250	605	3.72	2,600.0	96.7	372,909
1998	161.0	16,460	609	3.70	2,650.0	98.1	424,000
1999	160.0	16,938	623	3.68	2,710.0	99.7	417,340
2000	156.0	17,199	642	3.73	2,683.0	100.1	370,254
2001	153.0	17,444	647	3.71	2,669.0	99.0	421,702
2002	154.0	17,552	651	3.71	2,703.0	100.3	343,281
2003	149.0	17,698	662	3.74	2,637.0	98.6	342,810
2004	145.0	17,890	667	3.73	2,594.0	96.8	438,386
2005	143.0	18,469	689	3.73	2,641.0	98.5	422,560
2006	141.0	18,383	688	3.74	2,592.0	96.9	355,104
New England							
1997	279.0	16,362	605	3.70	4,564.9	168.9	666,654
1998	280.1	16,648	614	3.69	4,663.0	172.0	756,243
1999	277.0	16,935	623	3.68	4,691.0	172.7	736,353
2000	263.8	17,237	643	3.73	4,547.2	169.5	632,822
2001	256.4	17,477	645	3.69	4,481.2	165.5	714,894
2002	255.4	17,690	654	3.70	4,517.9	167.0	582,871
2003	242.3	17,883	667	3.73	4,333.1	161.7	577,507
2004	233.2	18,081	672	3.72	4,216.6	156.7	723,793
2005	230.1	18,386	684	3.72	4,230.7	157.4	686,098
2006	224.1	18,398	686	3.73	4,123.0	153.7	576,780

^{1/} Valued at averaged returns per 100 pounds of milk in combined marketings of milk and cream. Value equals cash receipts from marketings of milk and cream plus value of milk used for home consumption plus value of milk fed to calves.

QUARTERLY MILK: Number of Cows on Farms, Production Per Cow and Production, 1997 – 2006

State And Year	Milk Cows ^{1/}				Production per Cow ^{2/}				Milk Production			
	Jan-Mar	Apr-Jun	Jul-Sep	Oct-Dec	Jan-Mar	Apr-Jun	Jul-Sep	Oct-Dec	Jan-Mar	Apr-Jun	Jul-Sep	Oct-Dec
	1,000 Head				Pounds				Million Pounds			
Connecticut												
1997	29.0	29.0	30.0	30.0	4,365	4,440	4,175	4,280	127.0	129.0	125.0	128.0
1998	30.0	30.0	30.0	29.0	4,520	4,520	4,290	4,400	136.0	136.0	129.0	128.0
1999	29.0	29.0	29.0	28.0	4,610	4,675	4,345	4,415	134.0	136.0	126.0	124.0
2000	28.0	26.0	26.0	26.0	4,610	4,690	4,380	4,440	129.0	122.0	114.0	115.0
2001	26.0	25.0	24.0	24.0	4,630	4,730	4,480	4,570	120.0	118.0	108.0	110.0
2002	24.0	24.0	24.0	23.0	4,820	4,890	4,470	4,650	116.0	117.0	107.0	107.0
2003	23.0	22.0	22.0	21.0	4,720	4,840	4,520	4,700	109.0	106.0	99.0	99.0
2004	21.0	20.0	20.0	20.0	4,850	4,980	4,730	4,770	102.0	100.0	95.0	95.0
2005	20.0	20.0	20.0	20.0	4,930	5,030	4,620	4,620	99.0	101.0	92.0	92.0
2006	20.0	19.5	19.0	19.0	4,870	4,890	4,550	4,680	97.0	95.0	86.0	89.0
Maine												
1997	40.0	41.0	41.0	41.0	4,060	4,150	4,110	3,930	162.0	170.0	169.0	161.0
1998	40.0	41.0	42.0	42.0	4,130	4,230	4,200	3,960	165.0	173.0	176.0	166.0
1999	42.0	42.0	41.0	40.0	4,130	4,240	4,230	4,130	173.0	178.0	173.0	165.0
2000	40.0	40.0	39.0	38.0	4,270	4,310	4,260	4,180	171.0	172.0	166.0	159.0
2001	37.0	38.0	38.0	38.0	4,290	4,390	4,360	4,270	159.0	167.0	166.0	162.0
2002	38.0	38.0	37.0	36.0	4,310	4,490	4,440	4,350	164.0	171.0	164.0	157.0
2003	35.0	35.0	35.0	34.0	4,420	4,600	4,490	4,450	155.0	161.0	157.0	151.0
2004	34.0	34.0	34.0	33.0	4,450	4,610	4,580	4,490	151.0	157.0	156.0	148.0
2005	33.0	33.0	33.0	32.0	4,460	4,690	4,570	4,450	147.0	155.0	151.0	142.0
2006	32.0	32.0	32.0	32.0	4,375	4,600	4,560	4,400	140.0	147.0	146.0	141.0
Massachusetts												
1997	26.0	27.0	26.0	26.0	4,135	4,170	4,140	4,050	108.0	113.0	108.0	105.0
1998	26.0	26.0	26.0	25.0	4,200	4,290	4,250	4,250	109.0	112.0	111.0	106.0
1999	25.0	25.0	24.0	24.0	4,210	4,340	4,320	4,270	105.0	109.0	104.0	102.0
2000	23.0	23.0	22.0	21.0	4,310	4,320	4,150	4,160	99.0	99.0	91.0	87.0
2001	21.0	21.0	21.0	21.0	4,210	4,400	4,260	4,210	88.0	92.0	89.0	88.0
2002	21.0	21.0	20.0	20.0	4,350	4,460	4,430	4,370	91.0	94.0	89.0	87.0
2003	20.0	20.0	18.0	18.0	4,400	4,470	4,400	4,240	88.0	89.0	79.0	76.0
2004	17.0	17.0	17.0	17.0	4,380	4,490	4,320	4,270	74.0	76.0	73.0	73.0
2005	17.0	17.0	16.0	16.0	4,320	4,490	4,470	4,340	73.0	76.0	72.0	69.0
2006	16.0	16.0	15.5	15.5	4,500	4,560	4,360	4,200	72.0	73.0	68.0	65.0

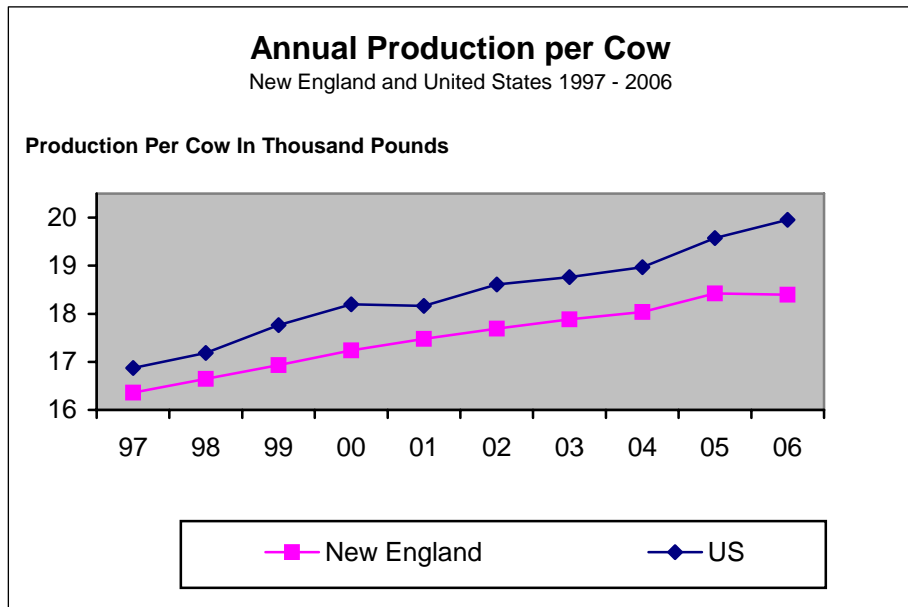
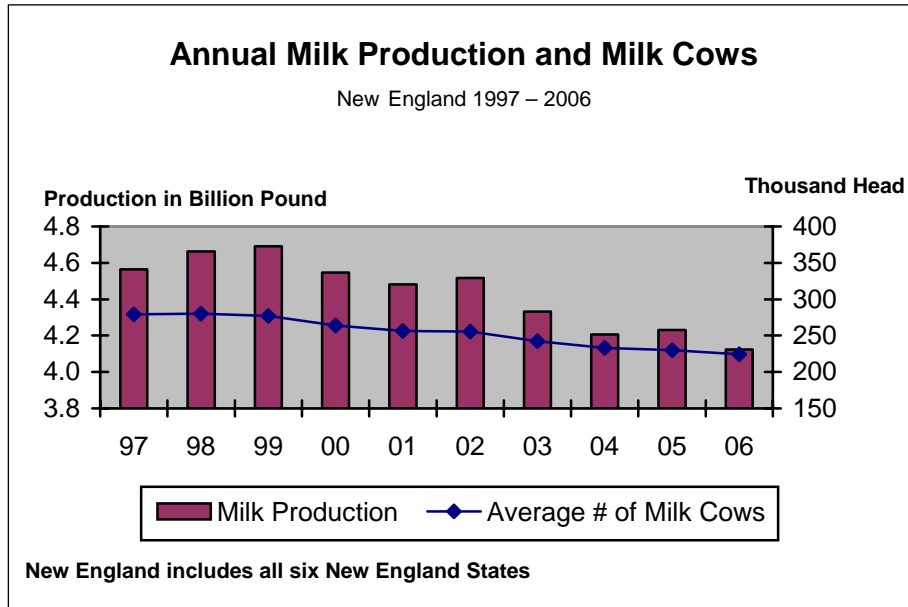
See footnotes after the New England table.



QUARTERLY MILK: Number of Cows on Farms, Production Per Cow and Production, 1997 – 2006

State And Year	Milk Cows ^{1/}				Production per Cow ^{2/}				Milk Production			
	Jan-Mar	Apr-Jun	Jul-Sep	Oct-Dec	Jan-Mar	Apr-Jun	Jul-Sep	Oct-Dec	Jan-Mar	Apr-Jun	Jul-Sep	Oct-Dec
	1,000 Head				Pounds				Million Pounds			
New Hampshire												
1997	20.0	20.0	20.0	20.0	4,130	4,220	4,025	4,020	83.0	84.0	81.0	80.0
1998	19.0	20.0	20.0	20.0	4,350	4,330	4,130	4,020	83.0	87.0	83.0	80.0
1999	19.0	19.0	19.0	19.0	4,285	4,370	4,180	4,100	81.0	83.0	79.0	78.0
2000	18.0	18.0	18.0	18.0	4,460	4,480	4,210	4,190	80.0	81.0	76.0	75.0
2001	18.0	18.0	18.0	18.0	4,420	4,630	4,370	4,420	80.0	83.0	79.0	80.0
2002	18.0	18.0	17.0	17.0	4,640	4,740	4,680	4,670	84.0	85.0	80.0	79.0
2003	17.0	16.0	16.0	16.0	4,670	4,910	4,650	4,590	79.0	79.0	74.0	73.0
2004	16.0	16.0	16.0	16.0	4,790	4,850	4,600	4,620	77.0	78.0	74.0	74.0
2005	16.0	16.0	16.0	16.0	4,710	4,910	4,650	4,650	75.0	79.0	74.0	74.0
2006	15.5	15.0	15.0	14.5	4,940	5,040	4,700	4,760	77.0	76.0	71.0	69.0
Rhode Island												
1997	2.0	2.1	2.0	2.0	4,075	4,025	3,790	3,820	8.2	8.5	7.6	7.6
1998	2.1	2.1	2.1	2.1	3,950	4,100	3,700	3,950	8.3	8.6	7.8	8.3
1999	2.0	2.0	2.0	1.9	3,970	4,120	3,830	3,810	7.9	8.2	7.7	7.2
2000	1.9	1.8	1.8	1.6	4,070	4,190	3,800	3,900	7.7	7.5	6.8	6.2
2001	1.4	1.4	1.4	1.4	4,180	4,340	4,100	3,950	5.9	6.1	5.7	5.5
2002	1.4	1.4	1.4	1.4	4,170	4,390	4,030	3,890	5.8	6.1	5.6	5.4
2003	1.4	1.3	1.3	1.3	4,170	4,500	4,100	3,950	5.8	5.9	5.3	5.1
2004	1.2	1.2	1.1	1.1	4,300	4,370	4,230	4,130	5.2	5.2	4.7	4.5
2005	1.1	1.1	1.1	1.0	4,180	4,550	4,300	4,350	4.6	5.0	4.7	4.4
2006	1.1	1.1	1.1	1.1	4,180	4,550	4,360	4,200	4.6	5.0	4.8	4.6
Vermont												
1997	159.0	160.0	161.0	162.0	3,994	4,156	4,099	3,951	635.0	665.0	660.0	640.0
1998	162.0	161.0	162.0	161.0	4,019	4,242	4,074	4,075	651.0	683.0	660.0	656.0
1999	162.0	160.0	160.0	159.0	4,130	4,369	4,244	4,170	669.0	699.0	679.0	663.0
2000	157.0	156.0	156.0	155.0	4,331	4,417	4,282	4,168	680.0	689.0	668.0	646.0
2001	153.0	152.0	152.0	154.0	4,261	4,487	4,388	4,338	652.0	682.0	667.0	668.0
2002	154.0	154.0	154.0	153.0	4,422	4,565	4,318	4,275	681.0	703.0	665.0	654.0
2003	152.0	149.0	147.0	146.0	4,401	4,557	4,415	4,384	669.0	679.0	649.0	640.0
2004	146.0	145.0	145.0	144.0	4,479	4,572	4,448	4,389	654.0	663.0	645.0	632.0
2005	143.0	144.0	143.0	142.0	4,580	4,778	4,587	4,521	655.0	688.0	656.0	642.0
2006	143.0	142.0	141.0	140.0	4,636	4,732	4,496	4,450	663.0	672.0	634.0	623.0
New England												
1997	276.0	279.1	280.0	281.0	4,070	4,190	4,109	3,991	1,123.2	1,169.5	1,150.6	1,121.6
1998	279.1	280.1	282.1	279.1	4,129	4,283	4,136	4,100	1,152.3	1,199.6	1,166.8	1,144.3
1999	279.0	277.0	275.0	272.9	4,193	4,380	4,250	4,190	1,169.9	1,213.2	1,168.7	1,139.2
2000	267.9	264.8	262.8	259.6	4,355	4,420	4,269	4,192	1,166.7	1,170.5	1,121.8	1,088.2
2001	256.4	255.4	254.4	256.4	4,309	4,495	4,382	4,343	1,104.9	1,148.1	1,114.7	1,113.5
2002	256.4	256.4	253.4	250.4	4,453	4,587	4,383	4,351	1,141.8	1,176.1	1,110.6	1,089.4
2003	248.4	243.3	239.3	236.3	4,452	4,603	4,443	4,419	1,105.8	1,119.9	1,063.3	1,044.1
2004	235.2	233.2	233.1	231.1	4,520	4,628	4,495	4,442	1,063.2	1,079.2	1,047.7	1,026.5
2005	230.1	231.1	229.1	227.0	4,579	4,777	4,582	4,508	1,053.6	1,104.0	1,049.7	1,023.4
2006	227.6	225.6	223.6	222.1	4,629	4,734	4,516	4,465	1,053.6	1,068.0	1,009.8	991.6

^{1/} Average number including dry cows, excludes heifers not yet fresh.^{2/} In Vermont and New England, quarterly production per cow equals milk production for the quarter ÷ average number of milk cows for the same quarter.



MILK COWS and PRODUCTION: Number of Operations and Percent of Production by Size Group, 1997 – 2006

State and Year	Number of Operations ^{1/} Having					Percent of Milk Production				
	1-29 Head	30-49 Head	50-99 Head	100-199 Head	200+ Head	1-29 Head	30-49 Head	50-99 Head	100-199 Head	200+ Head
Vermont	Number					Percent				
1997	200	410	920	350	120	1.0	10.0	36.0	25.0	28.0
1998	200	390	830	350	130	1.0	8.0	35.0	25.0	31.0
1999	190	380	760	330	140	1.0	7.5	32.0	27.5	32.0
2000	190	340	710	310	150	1.0	7.0	29.0	26.0	37.0
2001	190	310	675	280	145	1.0	6.0	28.0	24.0	41.0
2002	180	300	600	260	160	1.0	6.0	24.0	23.0	46.0
2003	180	270	540	250	160	1.0	6.0	22.0	22.0	49.0
2004	160	230	510	240	160	2.0	6.0	24.0	22.0	46.0
2005	190	220	510	220	160	2.0	6.0	24.0	21.0	47.0
2006	140	200	500	200	160	2.0	5.0	24.0	21.0	48.0

^{1/} An operation is any place having one or more head of milk cows on hand at any time during the year.

MONTHLY MILK: Number of Cows on Farms, 1997 – 2006

Year	Milk Cows ^{1/}											
	Jan	Feb	Mar	Apr	May	Jun	Jul	Aug	Sep	Oct	Nov	Dec
	1,000 Head											
Vermont												
1997	159	159	158	159	160	161	160	161	162	161	162	162
1998	163	162	161	160	161	161	162	162	161	161	161	162
1999	162	162	162	161	160	159	159	160	160	159	160	159
2000	158	157	157	156	156	156	156	156	156	156	155	155
2001	154	153	152	152	152	152	152	152	152	153	154	154
2002	154	154	154	154	154	154	154	154	153	153	153	153
2003	153	152	151	150	149	148	148	147	147	147	146	146
2004	146	146	145	145	145	145	145	145	145	145	144	143
2005	143	143	143	144	144	143	143	143	142	142	142	143
2006	143	143	143	143	142	141	141	141	140	140	140	140

^{1/} Average number including dry cows, excluding heifers not yet fresh.

MONTHLY MILK: Production per Cow, 1997 – 2006

Year	Production per Cow											
	Jan	Feb	Mar	Apr	May	Jun	July	Aug	Sep	Oct	Nov	Dec
	Pounds											
Vermont												
1997	1,350	1,250	1,400	1,360	1,405	1,390	1,400	1,390	1,310	1,320	1,280	1,360
1998	1,365	1,255	1,405	1,395	1,460	1,395	1,400	1,370	1,310	1,350	1,315	1,400
1999	1,410	1,285	1,440	1,415	1,505	1,445	1,440	1,430	1,380	1,390	1,345	1,430
2000	1,455	1,375	1,490	1,455	1,515	1,450	1,460	1,435	1,385	1,405	1,350	1,405
2001	1,450	1,330	1,490	1,455	1,550	1,480	1,505	1,460	1,420	1,450	1,410	1,490
2002	1,510	1,375	1,530	1,495	1,570	1,500	1,480	1,450	1,400	1,425	1,380	1,470
2003	1,495	1,370	1,535	1,495	1,565	1,500	1,505	1,470	1,430	1,450	1,415	1,505
2004	1,515	1,445	1,530	1,500	1,570	1,495	1,525	1,495	1,430	1,455	1,415	1,515
2005	1,560	1,430	1,595	1,570	1,650	1,565	1,565	1,550	1,480	1,505	1,465	1,535
2006	1,580	1,450	1,610	1,560	1,630	1,545	1,540	1,510	1,460	1,485	1,445	1,520

MONTHLY MILK: Production, 1997 – 2006

Year	Milk Production											
	Jan	Feb	Mar	Apr	May	Jun	Jul	Aug	Sep	Oct	Nov	Dec
	Million Pounds											
Vermont												
1997	215	199	221	216	225	224	224	224	212	213	207	220
1998	222	203	226	223	235	225	227	222	211	217	212	227
1999	228	208	233	228	241	230	229	229	221	221	215	227
2000	230	216	234	227	236	226	228	224	216	219	209	218
2001	223	203	226	221	236	225	229	222	216	222	217	229
2002	233	212	236	230	242	231	228	223	214	218	211	225
2003	229	208	232	224	233	222	223	216	210	213	207	220
2004	221	211	222	218	228	217	221	217	207	211	204	217
2005	223	204	228	226	238	224	224	222	210	214	208	220
2006	226	207	230	223	231	218	217	213	204	208	202	213

ANNUAL MILK: Milk and Cream Marketings, Price and Income, 1997 – 2006

State and Year	Milk Utilized ^{1/}	Percent Fluid Grade ^{2/}	Average Returns ^{3/}		Cash Receipts from Marketings
			Milk per Cwt	Milkfat per Lb	
	Million Pound	Percent	Dollars		1,000 Dollars
Connecticut					
1997	502.0	100	15.17	4.17	76,132
1998	523.0	100	16.50	4.56	86,295
1999	514.0	100	16.20	4.44	83,268
2000	475.0	100	14.10	3.83	66,975
2001	452.0	100	16.10	4.41	72,772
2002	443.0	100	13.20	3.60	58,476
2003	410.0	100	13.60	3.68	55,760
2004	388.0	100	17.30	4.73	67,124
2005	381.0	100	16.50	4.46	62,865
2006	363.0	100	14.40	3.86	52,272
Maine					
1997	653.0	100	14.65	4.02	95,646
1998	671.0	100	16.30	4.43	109,373
1999	681.0	100	16.00	4.35	108,960
2000	661.0	100	14.10	3.75	93,201
2001	649.0	100	16.10	4.44	104,489
2002	651.0	100	13.30	3.64	86,583
2003	619.0	100	14.20	3.84	87,898
2004	607.0	100	18.00	4.86	109,260
2005	590.0	100	16.80	4.60	99,120
2006	570.0	100	14.70	4.06	83,790
Massachusetts					
1997	428.0	100	15.45	4.18	66,146
1998	432.0	100	17.00	4.61	73,440
1999	413.0	100	16.50	4.47	68,145
2000	371.0	100	14.10	3.80	52,311
2001	353.0	100	16.30	4.42	57,539
2002	357.0	100	13.20	3.58	47,124
2003	328.0	100	13.60	3.65	44,608
2004	293.0	100	17.40	4.68	50,982
2005	287.0	100	16.50	4.40	47,355
2006	276.0	100	14.40	3.80	39,744

See footnotes after the New England table.



ANNUAL MILK: Milk and Cream Marketings, Price and Income, 1997 – 2006

State and Year	Milk Utilized ^{1/}	Percent Fluid Grade ^{2/}	Average Returns ^{3/}		Cash Receipts from Marketings
			Milk per Cwt	Milkfat per Lb	
	Million Pound	Percent	Dollars		1,000 Dollars
New Hampshire					
1997	323.0	100	14.60	3.87	47,158
1998	327.0	100	16.30	4.37	53,301
1999	316.0	100	15.70	4.21	49,612
2000	308.0	100	14.00	3.72	43,120
2001	319.0	100	16.30	4.34	51,997
2002	325.0	100	13.00	3.48	42,250
2003	302.0	100	13.70	3.63	41,374
2004	300.0	100	17.30	4.63	51,900
2005	299.0	100	16.30	4.34	48,737
2006	289.0	100	14.20	3.76	41,038
Rhode Island					
1997	31.5	100	14.50	4.14	4,568
1998	32.3	100	16.30	4.41	5,265
1999	30.6	100	15.60	4.31	4,774
2000	27.8	100	14.20	3.86	3,948
2001	22.9	100	16.40	4.44	3,756
2002	22.8	100	13.30	3.65	3,032
2003	21.9	100	13.50	3.61	2,957
2004	19.4	100	17.90	4.70	3,473
2005	18.6	100	16.80	4.44	3,125
2006	18.7	100	14.80	3.83	2,768
Vermont					
1997	2,570.0	100	14.34	3.86	368,606
1998	2,617.0	100	16.00	4.32	418,720
1999	2,680.0	100	15.40	4.18	412,720
2000	2,658.0	100	13.80	3.70	366,804
2001	2,649.0	100	15.80	4.26	418,542
2002	2,684.0	100	12.70	3.42	340,868
2003	2,621.0	100	13.00	3.48	340,730
2004	2,577.0	100	16.90	4.53	435,513
2005	2,624.0	100	16.00	4.29	419,840
2006	2,576.0	100	13.70	3.66	352,921
New England					
1997	4,507.5	100	14.60	3.95	658,256
1998	4,602.3	100	16.22	4.39	746,394
1999	4,634.6	100	15.70	4.26	727,479
2000	4,500.8	100	13.92	3.73	626,359
2001	4,444.9	100	15.95	4.32	709,095
2002	4,482.8	100	12.90	3.49	578,333
2003	4,301.9	100	13.33	3.58	573,327
2004	4,184.4	100	17.76	4.61	718,252
2005	4,199.6	100	16.22	4.36	681,042
2006	4,092.7	100	13.99	3.75	527,533

^{1/} Milk utilized includes: milk sold to plants and dealers as whole milk and equivalent amounts of milk for cream, milk produced by dealers' own herds together with small amounts sold directly to consumers, and milk produced by institutional herds.

^{2/} Percentage of milk sold that is eligible for fluid use. Includes fluid-grade milk used in manufacturing dairy products.

^{3/} Cash receipts divided by milk or milkfat in combined marketings.

ANNUAL MILK: Milk Used Where Produced and Gross Producer Income, 1997 – 2006

State and Year	Milk Used Where Produced				Gross Producer Income ^{3/}
	Total	Fed to Calves ^{1/}	Used for Milk, Cream, and Butter (Home Consumption)		
			Milk Utilized	Value ^{2/}	
	Million Pounds			1,000 Dollars	
Connecticut					
1997	7.0	6.0	1.0	152	76,284
1998	6.0	5.0	1.0	165	86,460
1999	6.0	5.0	1.0	162	83,430
2000	5.0	4.5	0.5	71	67,046
2001	4.0	3.5	0.5	81	72,853
2002	4.0	3.5	0.5	66	58,542
2003	3.0	2.5	0.5	68	55,828
2004	4.0	3.5	0.5	87	67,211
2005	3.0	2.5	0.5	83	62,948
2006	4.0	3.5	0.5	72	52,344
Maine					
1997	9.0	8.0	1.0	146	95,792
1998	9.0	8.0	1.0	163	109,536
1999	8.0	7.0	1.0	160	109,120
2000	7.0	6.5	0.5	71	93,272
2001	5.0	4.5	0.5	81	104,570
2002	5.0	4.5	0.5	67	86,650
2003	5.0	4.5	0.5	71	87,969
2004	5.0	4.5	0.5	90	109,350
2005	5.0	4.5	0.5	84	99,204
2006	3.5	3.0	0.5	74	83,864
Massachusetts					
1997	6.0	5.0	1.0	155	66,301
1998	6.0	5.0	1.0	170	73,610
1999	7.0	6.0	1.0	165	68,310
2000	5.0	4.0	1.0	141	52,452
2001	4.0	3.0	1.0	163	57,702
2002	4.0	3.0	1.0	132	47,256
2003	4.0	3.0	1.0	136	44,744
2004	3.0	2.5	0.5	87	51,069
2005	3.0	2.5	0.5	83	47,438
2006	2.0	1.5	0.5	72	39,816

See footnotes after the New England table.



ANNUAL MILK: Milk Used Where Produced and Gross Producer Income, 1997 – 2006

State and Year	Milk Used Where Produced				Gross Producer Income ^{3/}
	Total	Fed to Calves ^{1/}	Used for Milk, Cream, and Butter (Home Consumption)		
			Milk Utilized	Value ^{2/}	
	Million Pounds			1,000 Dollars	
New Hampshire					
1997	5.0	4.0	1.0	146	47,304
1998	6.0	5.0	1.0	163	53,464
1999	5.0	4.0	1.0	157	49,769
2000	4.0	3.5	0.5	70	43,190
2001	3.0	2.5	0.5	82	52,079
2002	3.0	2.5	0.5	65	42,315
2003	3.0	2.5	0.5	69	41,443
2004	3.0	2.5	0.5	87	51,987
2005	3.0	2.5	0.5	82	48,819
2006	4.0	3.5	0.5	71	41,109
Rhode Island					
1997	0.4	0.4	—	—	4,568
1998	0.7	0.7	—	—	5,265
1999	0.4	0.4	—	—	4,774
2000	0.4	0.4	—	—	3,948
2001	0.3	0.3	—	—	3,756
2002	0.1	0.1	—	—	3,032
2003	0.2	0.2	—	—	2,957
2004	0.2	0.2	—	—	3,473
2005	0.1	0.1	—	—	3,125
2006	0.3	0.3	—	—	2,768
Vermont					
1997	30.0	25.0	5.0	717	369,323
1998	33.0	28.0	5.0	800	419,520
1999	30.0	25.0	5.0	770	413,490
2000	25.0	22.0	3.0	414	367,218
2001	20.0	18.0	2.0	316	418,858
2002	19.0	17.0	2.0	254	341,122
2003	16.0	14.0	2.0	260	340,990
2004	17.0	15.0	2.0	338	435,851
2005	17.0	15.0	2.0	320	420,160
2006	16.0	14.0	2.0	274	353,186
New England					
1997	57.4	48.4	9.0	1,316	659,572
1998	60.7	51.7	9.0	1,461	747,855
1999	56.4	47.4	9.0	1,414	728,893
2000	46.4	40.9	5.5	767	627,126
2001	36.3	31.8	4.5	723	709,818
2002	35.1	30.6	4.5	584	578,917
2003	31.2	26.7	4.5	604	573,931
2004	32.2	28.2	4.0	689	718,941
2005	31.1	27.1	4.0	652	681,694
2006	29.8	25.8	4.0	563	573,087

^{1/} Data excludes milk sucked by calves.^{2/} Valued at averaged returns per 100 pounds of milk in combined marketings of milk and cream^{3/} Cash receipts from marketings of milk and cream plus value of milk used for home consumption

**MONTHLY MILK PRICE: Average Price per 100 Pounds
Received by Farmers, 1997– 2006 ^{1/}**

State and Year	Jan	Feb	Mar	Apr	May	Jun	Jul	Aug	Sep	Oct	Nov	Dec
	Dollars per Cwt											
Vermont												
1997	13.70	13.60	14.10	14.00	13.80	13.00	13.80	14.10	14.60	15.40	15.80	15.50
1998	15.20	15.20	15.20	14.90	14.60	15.10	14.80	15.90	17.30	17.90	17.70	18.00
1999	18.20	16.60	16.50	13.90	13.90	14.10	14.50	14.90	16.20	16.30	16.30	13.90
2000	13.40	13.40	13.50	13.40	13.50	13.80	13.50	13.80	14.00	14.00	14.30	14.60
2001	13.70	14.30	15.00	15.40	16.20	16.80	17.00	17.30	17.90	16.40	15.80	14.10
2002	14.20	13.80	13.30	13.10	12.70	12.10	11.60	11.70	12.00	12.50	12.50	12.40
2003	12.30	11.90	11.50	11.40	11.50	11.50	12.10	13.40	15.00	15.80	15.50	14.80
2004	14.00	14.40	16.20	17.80	20.10	19.80	17.60	15.50	16.30	16.60	17.00	17.20
2005	16.90	16.00	16.60	15.80	15.50	15.10	15.80	15.70	16.10	16.50	16.10	15.50
2006	15.30	14.60	13.80	12.80	12.70	12.70	12.70	12.90	13.60	14.50	14.00	14.80

^{1/} Before deductions for hauling. Includes quality, quantity and other premiums, Excludes hauling subsidies.



**ANNUAL AVERAGE MILK PRICE: Combined Marketings, Annual Average Price per 100 Pounds
Received by Farmers, 1997– 2006 ^{1/}**

Year	Connecticut	Maine	Massachusetts	New Hampshire	Rhode Island	Vermont	New England
	Dollars per Cwt						
1997	15.17	14.65	15.45	14.60	14.50	14.34	14.60
1998	16.50	16.30	17.00	16.30	16.30	16.00	16.22
1999	16.20	16.00	16.50	15.70	15.60	15.40	15.70
2000	14.10	14.10	14.10	14.00	14.20	13.80	13.92
2001	16.10	16.10	16.30	16.30	16.40	15.80	15.95
2002	13.20	13.30	13.20	13.00	13.30	12.70	12.90
2003	13.60	14.20	13.60	13.70	13.50	13.00	13.33
2004	17.30	18.00	17.40	17.30	17.90	16.90	17.16
2005	16.50	16.80	16.50	16.30	16.80	16.00	16.22
2006	14.40	14.70	14.40	14.20	14.80	13.70	13.99

^{1/} Cash receipts divided by milk in combined marketings.