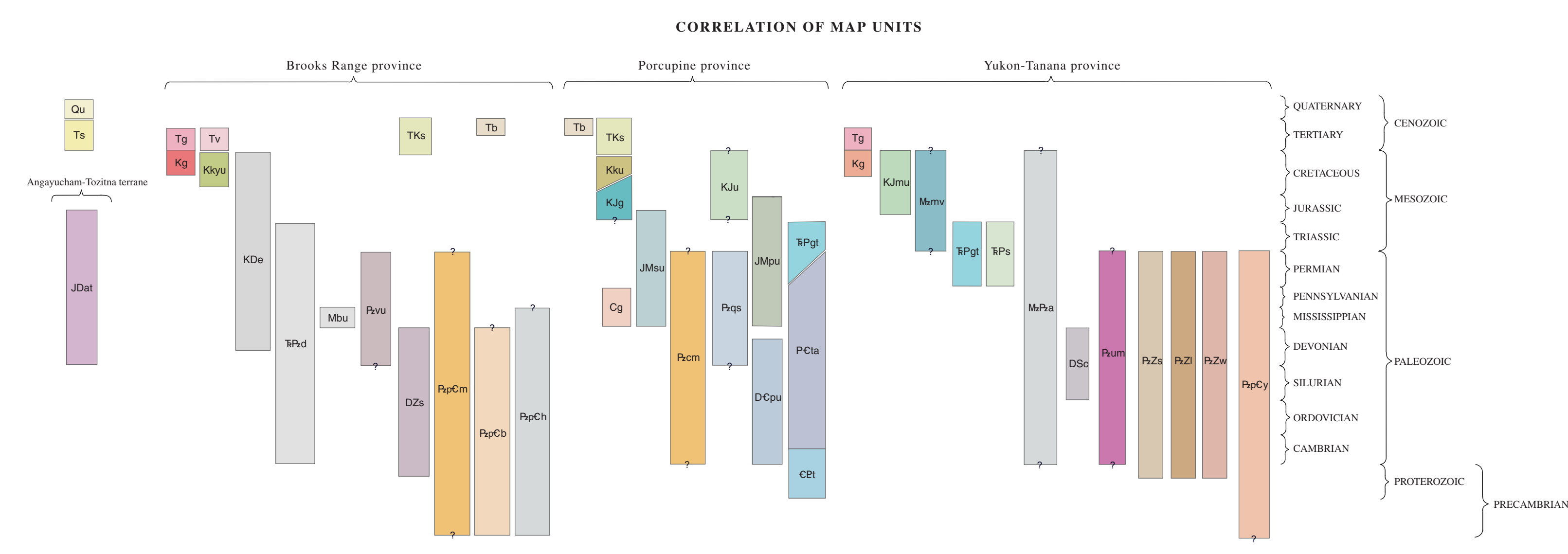
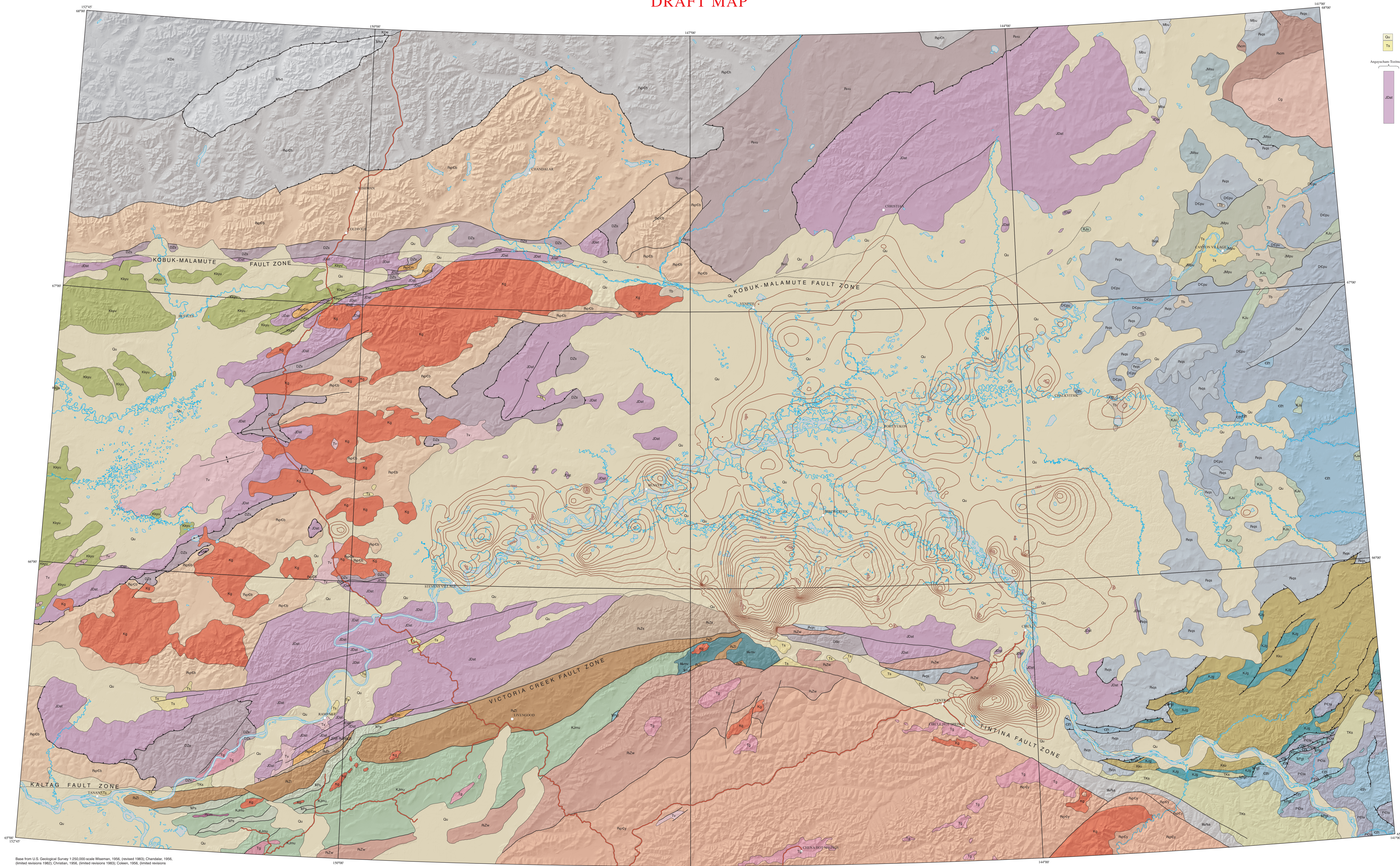
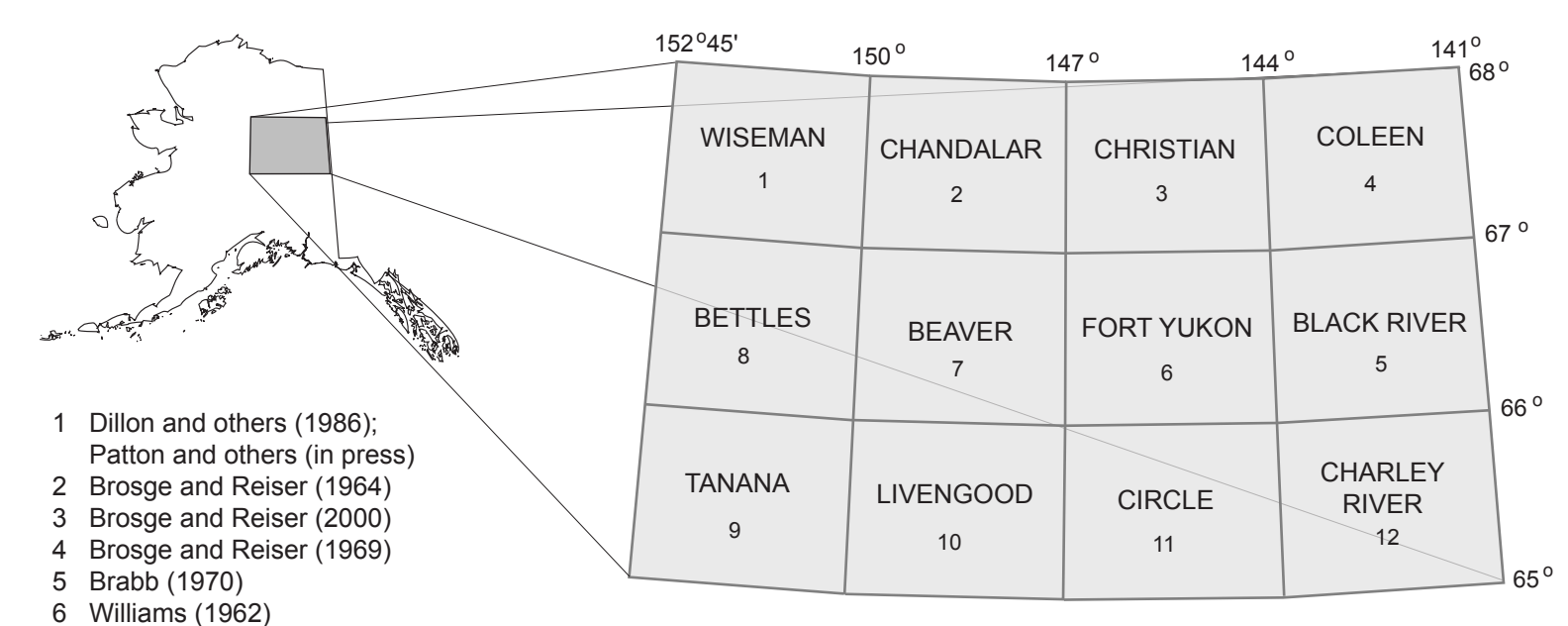


DRAFT MAP



- LIST OF MAP UNITS**
- UNITS PRESENT IN MORE THAN ONE PROVINCE**
- Qu Unconsolidated and poorly consolidated sediments (Quaternary)
 - Tb Shale flows and rare siltstone cones (Tertiary)
 - Tg Granite rocks (Tertiary)
 - Ta Clastic sedimentary rocks (Tertiary)
 - Tka Sedimentary rocks (Tertiary and Cretaceous)
 - Kg Granite rocks (Cretaceous)
 - SpTb Glen Smale, lower part, and Taktandil Limestone, undivided (Triassic and Permian)
 - JDaI Angoruchan-Tolima terrane, undivided (Early Jurassic to Devonian)
- BROOKS RANGE PROVINCE**
- Tv Yukonic rocks (Tertiary)
 - Kyu Sedimentary rocks of the Yukon-Koyukuk basin, undivided (Cretaceous)
 - KCu Sedimentary rocks of the Yukon-Koyukuk basin, undivided (Cretaceous to Devonian)
 - Mbu Metasedimentary, metaigneous, and sedimentary rocks of the Dooneraak window (Triassic to lower Paleozoic)
 - Rvu Rocks of Brooks Range sequence, undivided (Mississippian)
 - Rvu Sedimentary rocks of the Venetie terrane, undivided (Paleozoic)
 - DZa Metamorphosed sedimentary rocks (Devonian to Proterozoic)
 - RuCh Metasedimentary and metaigneous rocks of the Hammond terrane (Paleozoic and/or Precambrian)
- PORCUPINE PROVINCE**
- Kku Sedimentary rocks of the Kanik basin, undivided (Cretaceous)
 - KgJ Glen Smale, upper part (Early Cretaceous and Jurassic?)
 - Kku Sedimentary rocks, undivided (Cretaceous and Jurassic?)
 - JMu Strange Woman Creek sequence, undivided (Jurassic to Mississippian)
 - Cg Granite and quartz monzonite (Carboniferous)
 - Pcm Metamorphic rocks (Paleozoic?)
 - Pst Sedimentary and igneous rocks (Paleozoic)
 - JMu Younger strata of the Porcupine River sequence, undivided (Jurassic to Mississippian)
 - DCou Older strata of the Porcupine River sequence, undivided (Devonian to Cambrian)
 - PCa Sedimentary rocks of the Tatonduk area (Permian to Cambrian)
 - CEI Sedimentary rocks of the Tintina Group (Cambrian and Proterozoic)
- YUKON-TANANA PROVINCE**
- KJnu Sedimentary rocks of the Minsky basin, undivided (Lower Cretaceous and Jurassic)
 - Mnu High-grade sedimentary rocks and silt (Mesozoic)
 - SpTb Sedimentary rocks (Triassic?) to Early Permian)
 - Mnu Low-grade metamorphic rocks (Mesozoic and/or Paleozoic?)
 - DSC Metamorphosed sedimentary rocks (Devonian and Silurian)
 - Rvu Ultramafic rocks (Paleozoic?)
 - RZa Sedimentary and igneous rocks corresponding to older parts of the Schwabka-Rampart area sequence (Paleozoic to Proterozoic)
 - RZb Sedimentary and igneous rocks corresponding to the older parts of the Fairbanks-White Mountains area (Paleozoic to Proterozoic)
 - RZc Metamorphic rocks of the Yukon-Tanana Upland, undivided (Paleozoic to Precambrian?)



- Dillon and others (1988); Patton and others (in press)
- Brosge and Reiser (1964)
- Brosge and Reiser (2000)
- Brosge and Reiser (1998)
- Drabro (1970)
- Williams (1962)
- Brosge and others (1972)
- Patton and others (in press)
- Til, Alison B., unpublished compilation map; Patton and others (in press); Reiterman and others (1997a); Reiterman and others (1998)
- Weller and others (1992)
- Foster and others (1983); Weller and others (1998)
- Drabro and Churkin (1969); Dover (1992); Van Koozen and others (1996)

Figure 1. Index map showing sources of geologic mapping and 1:250,000-scale quadrangles.

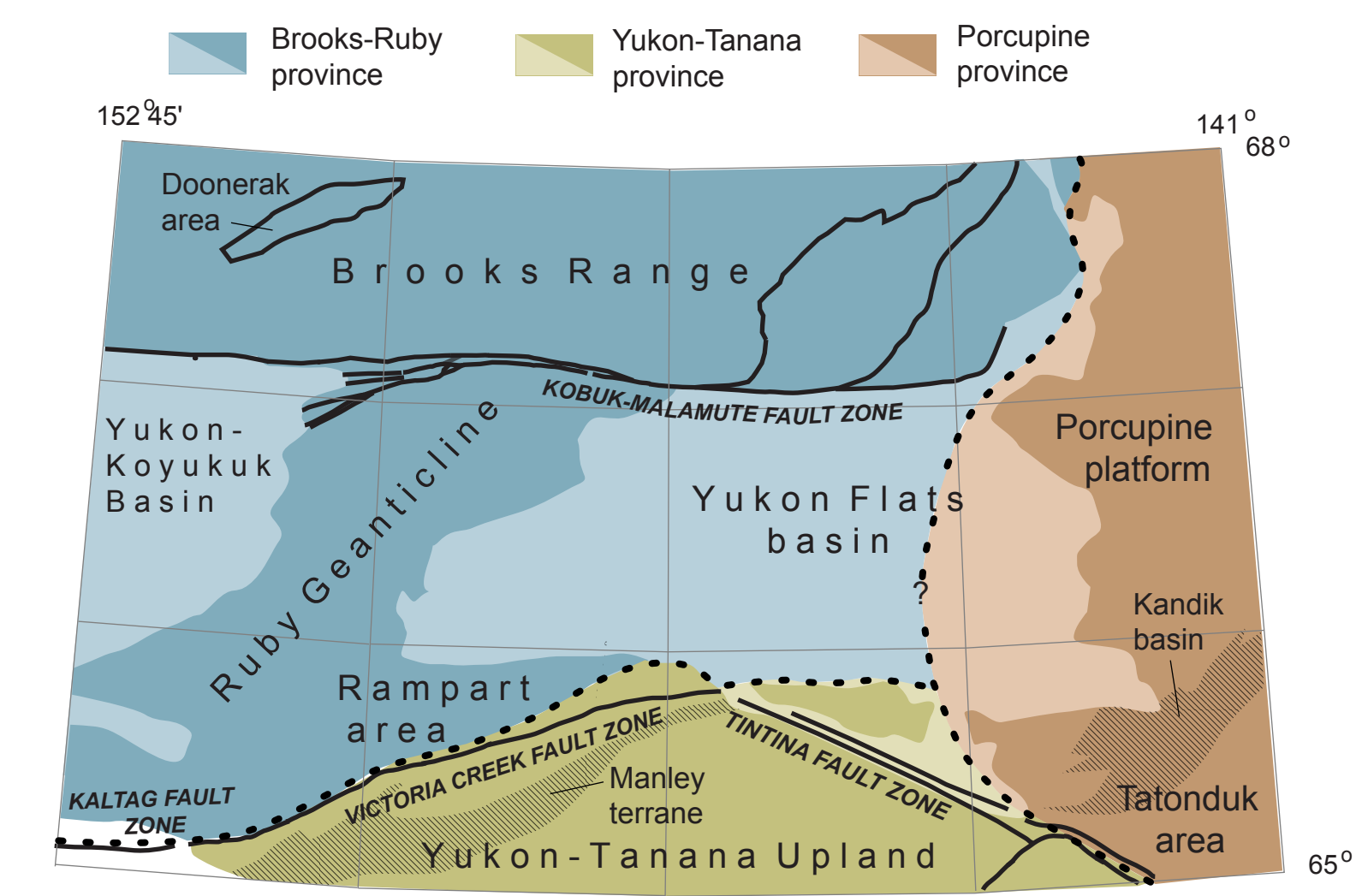
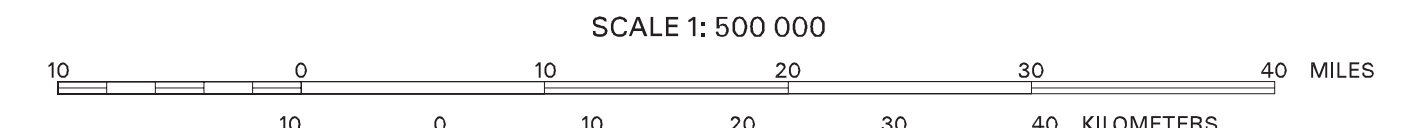


Figure 2. Major geographic areas, geologic provinces and outlines of 1:250,000-scale quadrangles, Yukon Flats region, east-central Alaska. Black lines represent selected faults; dotted lines delineate geologic province boundaries. Darker colors represent uplands and paler colors represent lowlands. See Figure 1 for quadrangle names.

Based on U.S. Geological Survey 1:250,000-scale Williams, 1966, (revised 1980); Chardack, 1956, (limited revisions 1982); Christian, 1956, (limited revisions 1982); Cohen, 1956, (limited revisions 1982); Bates, 1956, (limited revisions 1984); Bower, 1956, (limited revisions 1984); Fox, 1956, (limited revisions 1984); Black River 1956, (limited revision 1984); Tanana, 1950 (limited revision 1984); Longwood, 1955, (limited revision 1984); Circle, 1955, (limited revision 1987); Chena River, 1955, (limited revision 1982)

Shaded relief from a compilation of multiple 15 minute U.S. Geological Survey 43.2-meter Digital Elevation Models (DEM)

Alaska Albers Equal Area Conic projection, 1927 North American Datum



GENERALIZED BEDROCK GEOLOGIC MAP, YUKON FLATS REGION, EASTCENTRAL ALASKA

By
Alison B. Til, Julie A. Dumoulin, Jeffrey D. Phillips, Richard G. Stanley, and Jesse Crews