

Satellite Broadcast

Long Term Care Insurance

Sponsored by OPM, as part of the educational campaign for the Federal Long Term Care Insurance Program

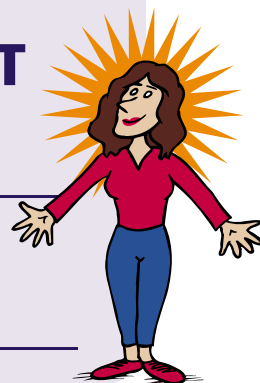
- Learn who should purchase long term care insurance and who should not
- Hear about what you should look for in a long term care insurance policy
- Find out how much coverage you should buy
- Discover how the Federal Long Term Care Insurance Program fits into this picture!

When: **Wednesday, May 15th**

12:30-1:30 p.m. EDT

Where: _____

For more information: _____



For more information on the Federal Long Term Care Insurance Program:

www.LTCFEDS.com

www.opm.gov/insure/ltc



Be Smart