

Calendar

Monday, November 15

2:30 p.m. Particle Astrophysics Seminar - Curia II

Speaker: M. Peloso, University of Minnesota

Title: Theoretical and Phenomenological Aspects of Massive Gravity

3:30 p.m. DIRECTOR'S COFFEE

BREAK - 2nd Flr X-Over

4:00 p.m. All Experimenters' Meeting - Curia II

Special Topic: Startup Plans

Tuesday, November 16

3:30 p.m. DIRECTOR'S COFFEE

BREAK - 2nd Flr X-Over

4:00 p.m. Accelerator Physics and Technology Seminar - 1 West

Speaker: V. Kamerdzhev, DESY

Title: Stability Issues of Electron Cooled Beams and Related Instrumentation at COSY

Wilson Hall Cafe

Monday, November 15

Minestrini

Chicken & Mushroom Cheese Steak

\$4.75

Baked Chicken Enchiladas \$3.75

Carved Roast Beef \$4.00

Smoked Turkey Panini Pesto Mayo \$4.75

Western Ranch Bagel \$2.75

Pacific Rim Rice Bowl \$4.75

[Wilson Hall Cafe Menu](#)

[Chez Leon](#)

Weather

Notes from the October UEC Meeting

The International Linear Collider (ILC), site access, and Tevatron performance were the highlights of the October 17

Users' Executive

Committee meeting.

UEC Chair William

Trischuk gave a report

on the September

High Energy Physics

Advisory Panel

meeting, and

Associate Director

Bruce Chrisman

discussed the Department of Energy's

meeting on the new orders for facilities

visits. Fermilab Director Michael Witherell

discussed the impact of the International Linear Collider technology decision on

Fermilab and the next steps for the ILC

and the lab. Vladimir Shiltsev presented

an overview on Tevatron performance

and plans for FY2005. In addition, the

dates for the 2005 Users' Meeting has

been set for June 8-9. The complete

minutes from the October meeting are

[available online](#).



William Trischuk

Fermilab Enters into Enterprise Agreement with Microsoft

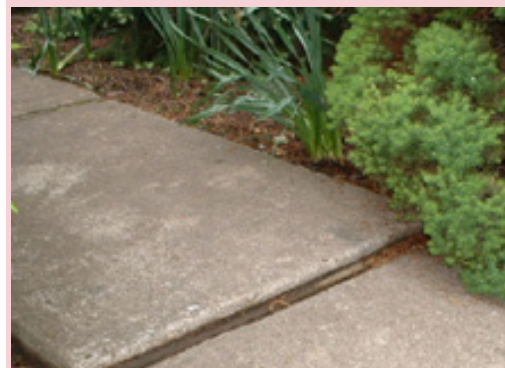
New Benefits for Employees



Feynman Computing Center

Safety Tip of the Week

Is Your Surface Flat?



Commonly observed unevenness at a sidewalk expansion joint. Most people expect that sidewalks will be reasonably flat.

It's happened to all us. You're walking along, and all of the sudden you trip on a bump in the sidewalk or an uneven tile on the floor. If you're lucky, you just blush in embarrassment and keep on walking, but a surprising number of injuries can occur from simply tripping.

At Fermilab, 14% of occupational injuries have been caused by slips, trips or falls. In fact, slipping, tripping or falling has been associated with 22% of the lab's restricted duty days and 31% of the lab's days away from work. Most of these accidents are due to slippery surfaces, stair usage, or tripping hazards. On November 3, an employee working on the shutdown experienced one of the less common types of slip, trip or fall accidents. As he stepped off a ladder, the employee unexpectedly tripped on a vacuum hose. The employee ended up with an ankle sprain, discomfort, physical therapy and and restricted duty days.

About once or twice per year, a Fermilab worker discovers that the surface he is working on is not as flat as expected. The



Partly cloudy 52°/40°

[Extended Forecast](#)

[Weather at Fermilab](#)

Current Security Status

[Secon Level 3](#)

Search

[Search the Fermilab Today Archive](#)

Info

Fermilab Today is online at:

<http://www.fnal.gov/today/>

Send comments and suggestions to

today@fnal.gov

[Fermilab Today archive](#)

[Fermilab Today PDF Version](#)

[Fermilab Result of the Week archive](#)

[Fermilab Safety Tip of the Week archive](#)

[Linear Collider News archive](#)

[Fermilab Today classifieds](#)

[Subscribe/Unsubscribe to Fermilab Today](#)

Fermilab recently entered into an Enterprise Agreement with Microsoft. The agreement provides a combination of benefits that include new version rights, the Employee Purchase Program, Home Use Program and more.

The Employee Purchase Program gives Fermilab employees the ability to obtain Microsoft products at reduced prices for their personal use. A Program Code and valid Company Email or Company Name provides access to the Microsoft Employee Purchase Program Site.

The Home Use Program allows Fermilab employees to obtain a copy of the Microsoft Office software they are using at the laboratory to install on their home computers. This program gives employees the ability to work at home with confidence in the compatibility of documents they create.

More information about the Enterprise Agreement is [available online](#). If you have questions about these programs, contact licensemgr@fnal.gov.

In the News

From *Nature Magazine*, November 5, 2004

Cosmic doomsday delayed

by Mark Peplow

Universe won't end for 24 billion years... probably.

You can breathe a sigh of relief: the Universe will last for at least the next 24 billion years, according to astrophysicists who have modelled the mysterious force of dark energy to work out the fate of the cosmos.

Andrei Linde, a theoretical astrophysicist

worker steps down on something and gets hurt, usually involving an ankle injury. About 40% of the time, the injury is caused by something sticking up, like a rock, hose or board. About 20% of the time, it's a hole or even an opening to a lower level. The remaining 40% of the time, an "unevenness" in the surface causes an injury, although usually a minor one. Unless there is something that grabs people's attention, they often expect the surface to have the same characteristics throughout the entire workspace.

So what can we do about these work surface problems?

- Keep work areas free of clutter
- Cover, barricade, and/or post holes
- Be observant and make mental notes of surface hazards.
- Eliminate unevenness in permanent work surfaces. If that cannot be done, use color changes to mark transition areas.

Have a great day and let's work safely all week!

[Safety Tip of the Week Archive](#)

Announcements

Power Outage News

Meson Tunnels and Buildings

November 16 – MS1 and M01 will be without power on Tuesday from 8 AM to 4:30 PM.

November 17 – MS2 and M02 will be without power on Wednesday from 8 AM to 4:30 PM.

November 18 – MS3, M03 and M04 will be without power on Thursday from 8 AM to 4:30 PM.

November 19 – Friday has been reserved

from Stanford University, California, leads a team who previously predicted that the Universe might end as soon as 11 billion years from now. But the team's latest research into dark energy, published online at the preprint server arXiv, gives us a stay of execution.

[Read more](#)

as a rain day to cover for any problems that might hinder the above work.

Upcoming Classes

November 16 & 17: Behavioral Interviewing (Talent Selection) two consecutive half-days

December 13 - 17: Advanced Linux Administration

December 14 & 15: Behavioral Interviewing (Talent Selection) two consecutive half-days

January 10 - 14: Advanced Linux Administration

[more information](#)

Flexible Benefits Plan Open Enrollment

The open enrollment for the Flexible Benefits Plan will continue this week. It will end at 5:00 P.M. on November 19, 2004. Please refer to your materials for additional information.

[more information](#)

Wanted: Einstein Materials

From Beanie Babies to coffee mugs, you can find Einstein's face on just about anything these days, and *symmetry* magazine wants to know what kinds of Einstein materials you have. Whether it's a t-shirt or even an action figure, send a photo to [Elizabeth Clements](#) or drop by Public Affairs to show off your collection by November 19. Items may be borrowed in order to be photographed for an upcoming issue of *symmetry*.

Brown Bag Seminar Next Week

Wellness Works will present a Brown Bag Seminar "Parenting Through the Holidays" on Wednesday, November 17 from noon to 1:00 pm in Curia II. Join us for ideas about making the holidays more enjoyable for parents and children and

dealing successfully with the stresses of the season.

[Upcoming Activities](#)