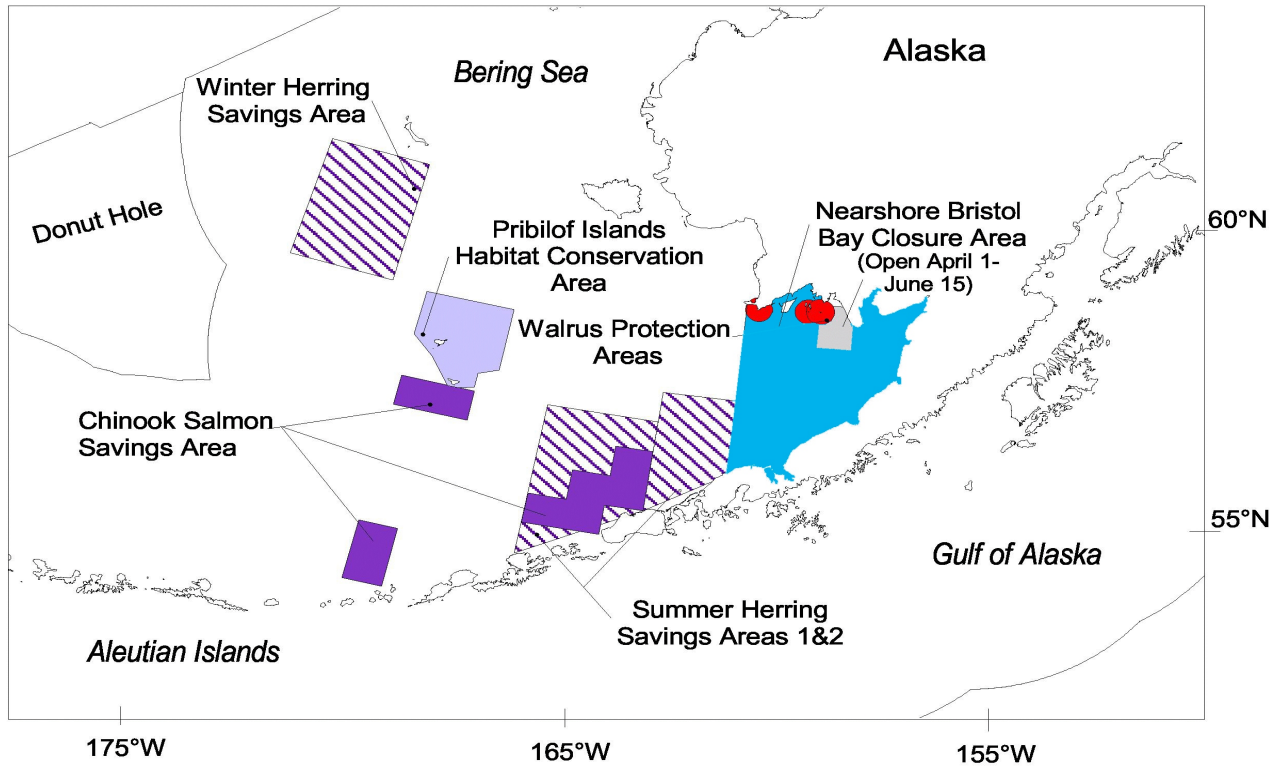
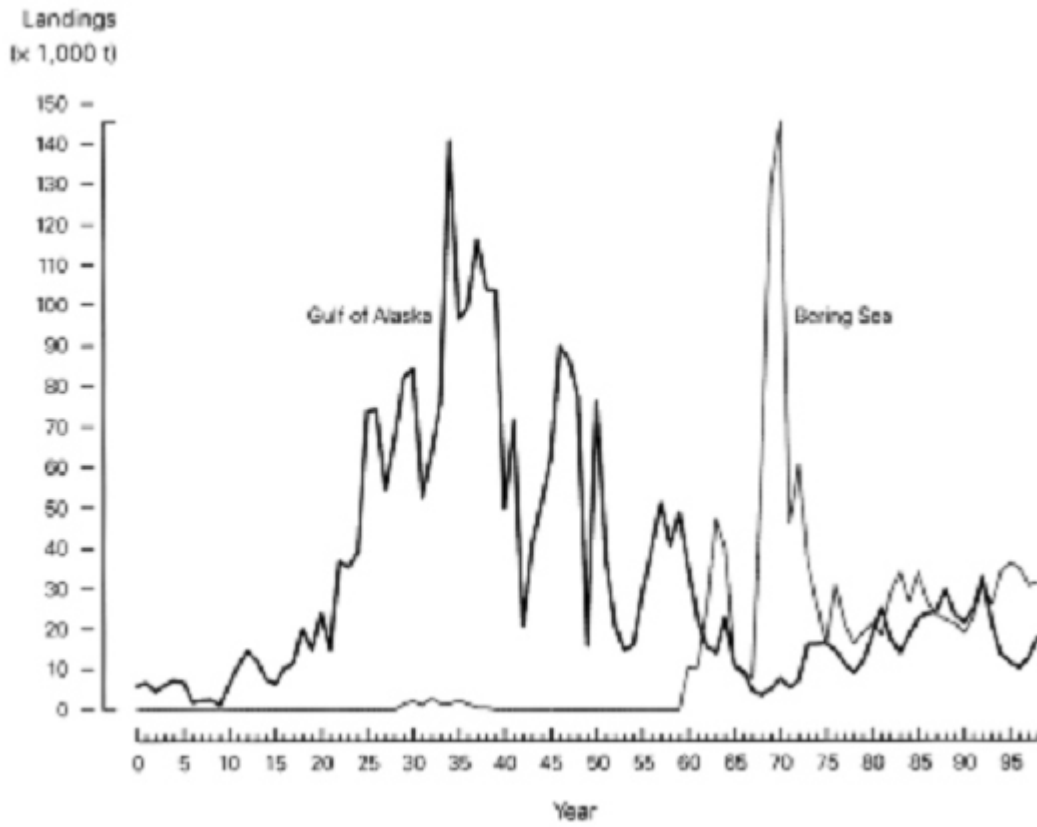


Figure 3.2-35. Management Areas Involving Prohibited Species and Walrus in the Bering Sea



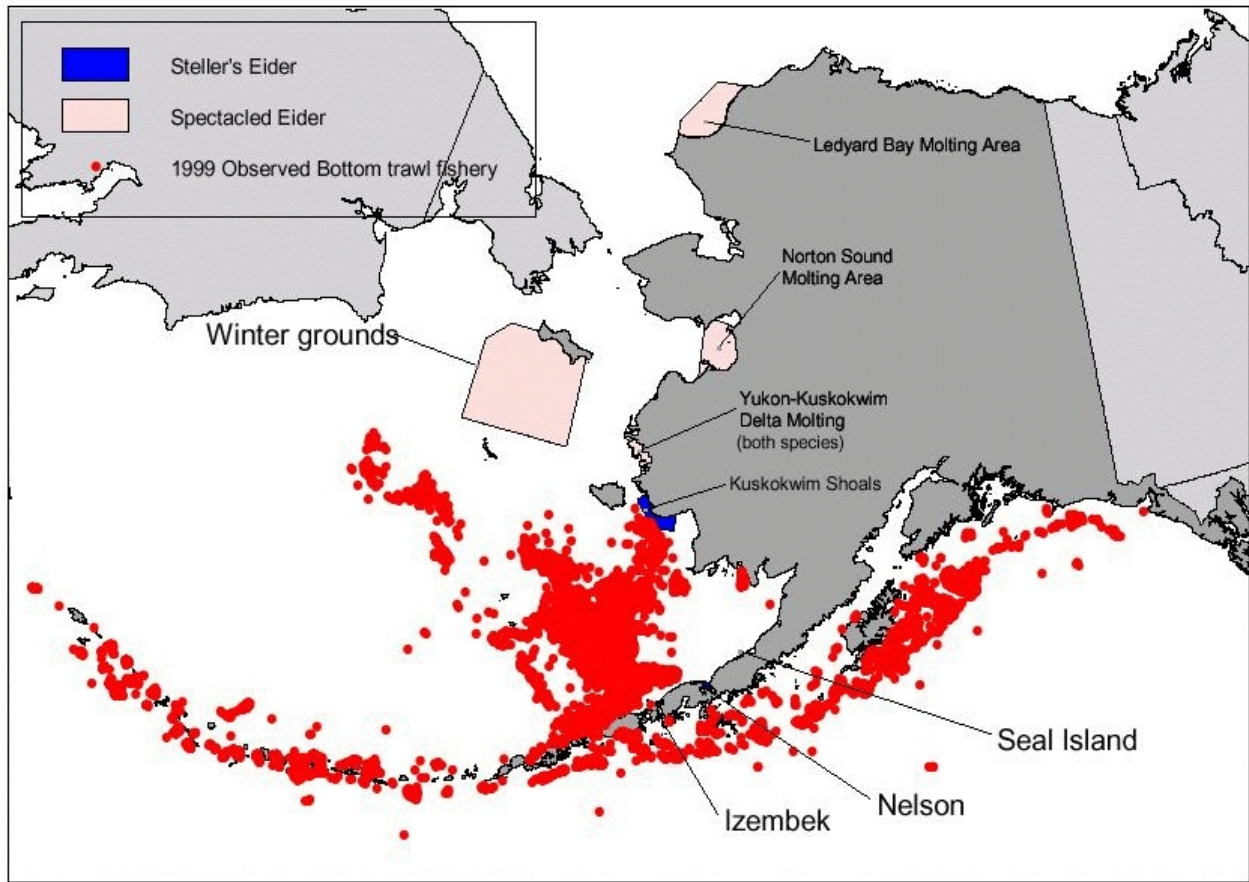
Source: NMFS 2001a

Figure 3.2-36. Historical Trend of Pacific Herring Catch in the Bering Sea and the Gulf of Alaska, 1990-1998



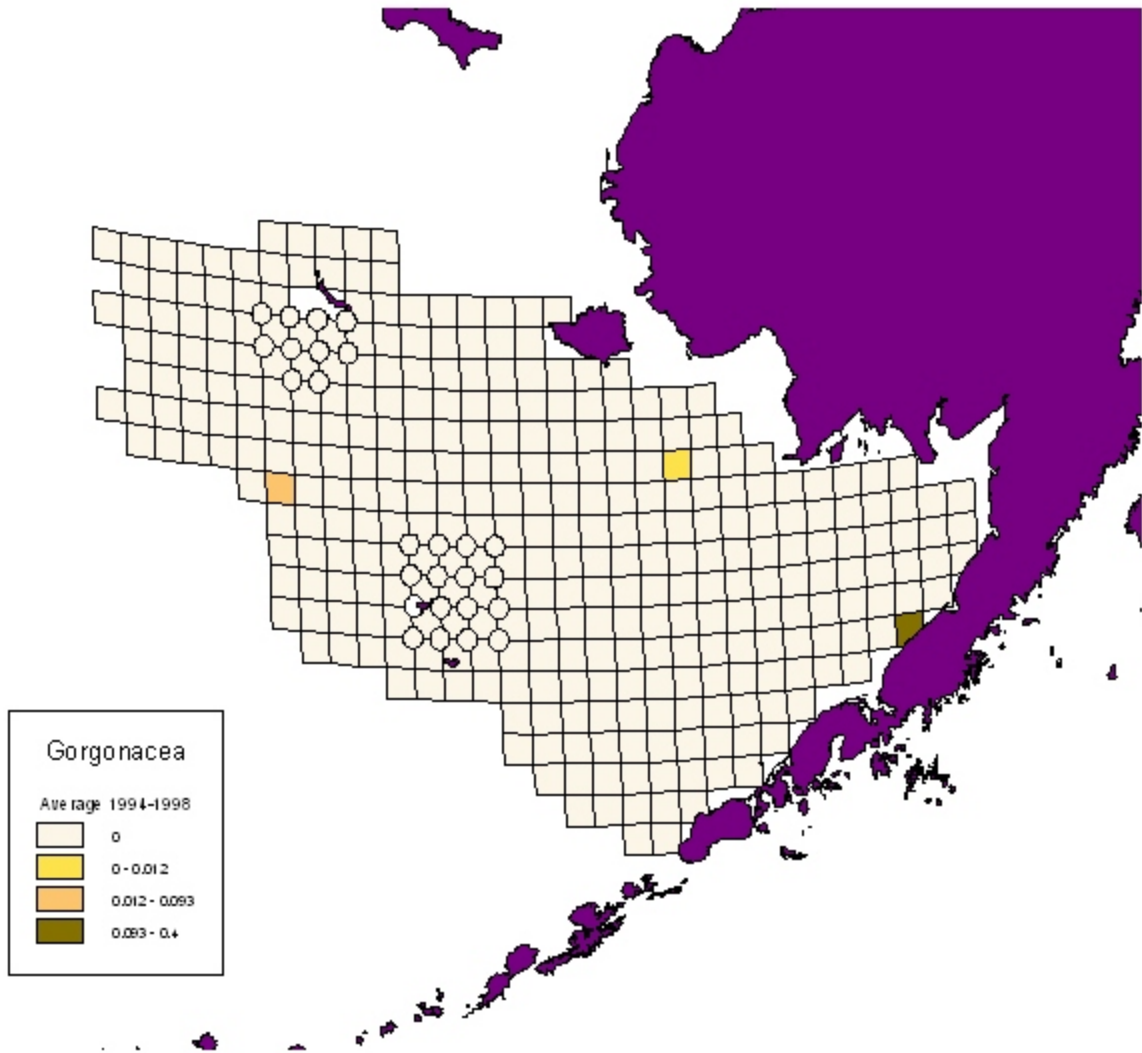
Source: ADF&G Fish Ticket Landing Receipt Database, 1999

Figure 3.2-37. Final Critical Habitat for Spectacled and Steller's Eider



Source: NMFS 2001b

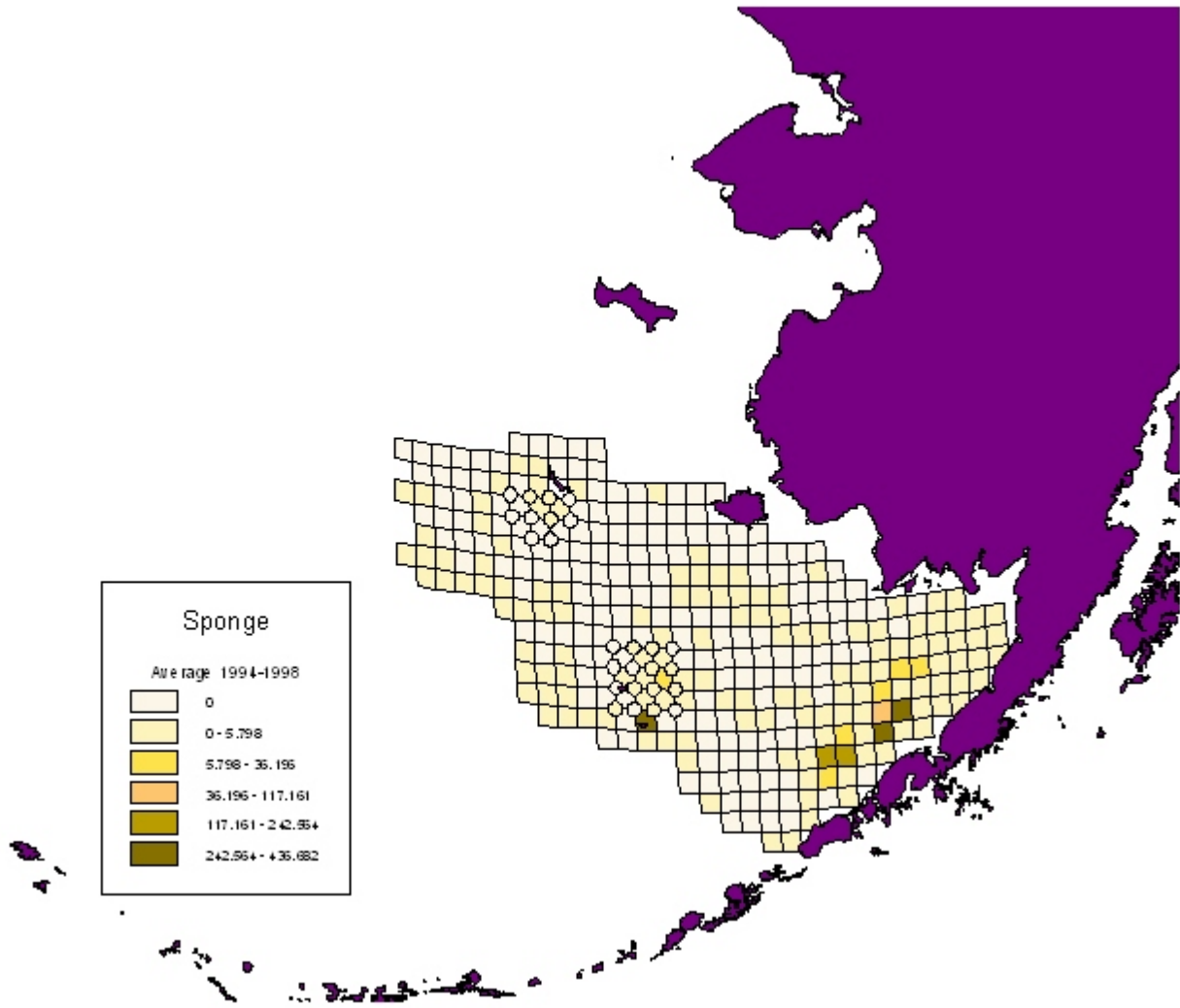
Figure 3.2-38. Distribution of Horny Corals (kilograms per hectare [kg/ha])



○ indicates standard areas of higher density sampling relative to the 20-nmi sampling grid.

Source: <http://www.afsc.noaa.gov/groundfish/HAPC/EBScontents.htm>

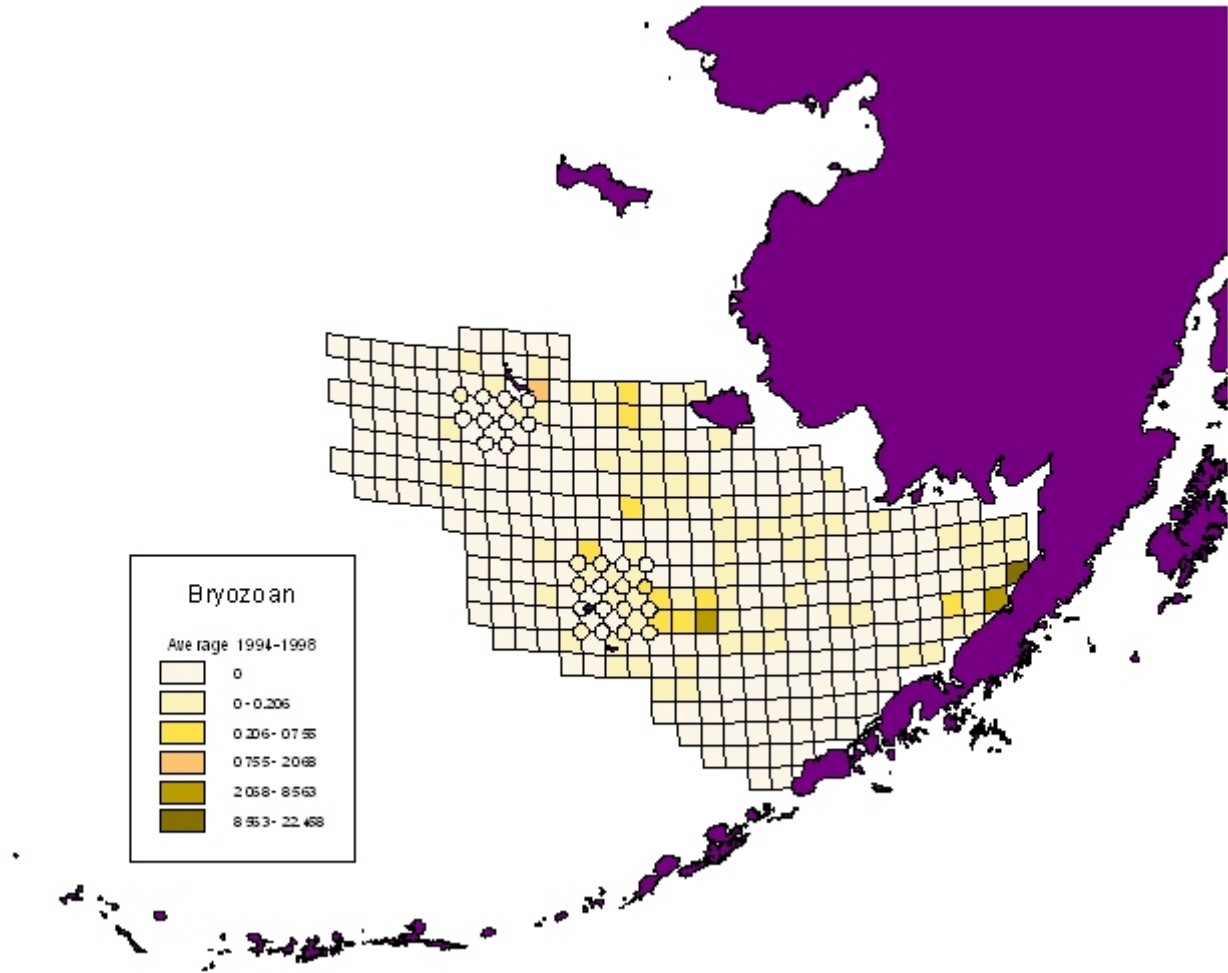
Figure 3.2-39. Distribution of Sponges (kg/ha)



○ indicates standard areas of higher density sampling relative to the 20-nmi sampling grid.

Source: <http://www.afsc.noaa.gov/groundfish/HAPC/EBScontents.htm>

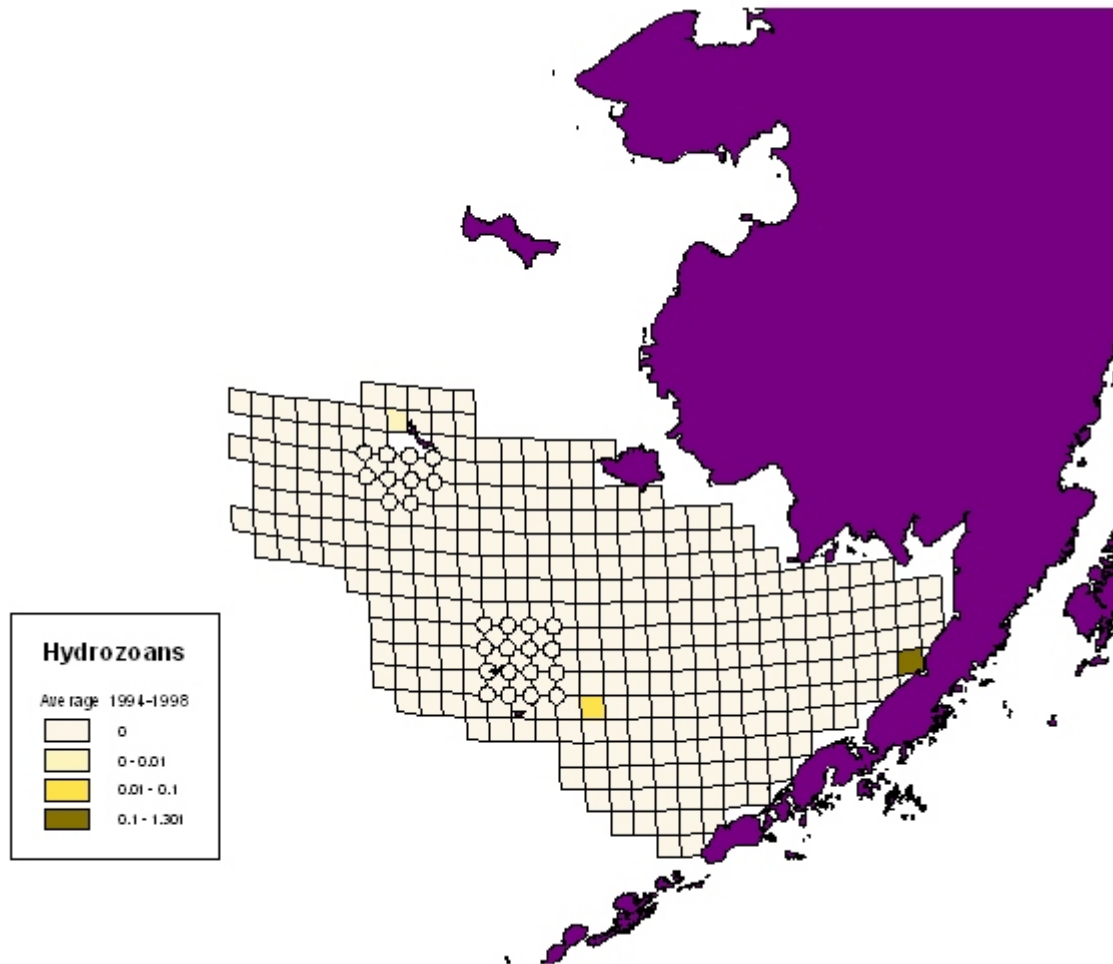
Figure 3.2-40. Distribution of Bryozoans (kg/ha)



○ indicates standard areas of higher density sampling relative to the 20-nmi sampling grid.

Source: <http://www.afsc.noaa.gov/groundfish/HAPC/EBScontents.htm>

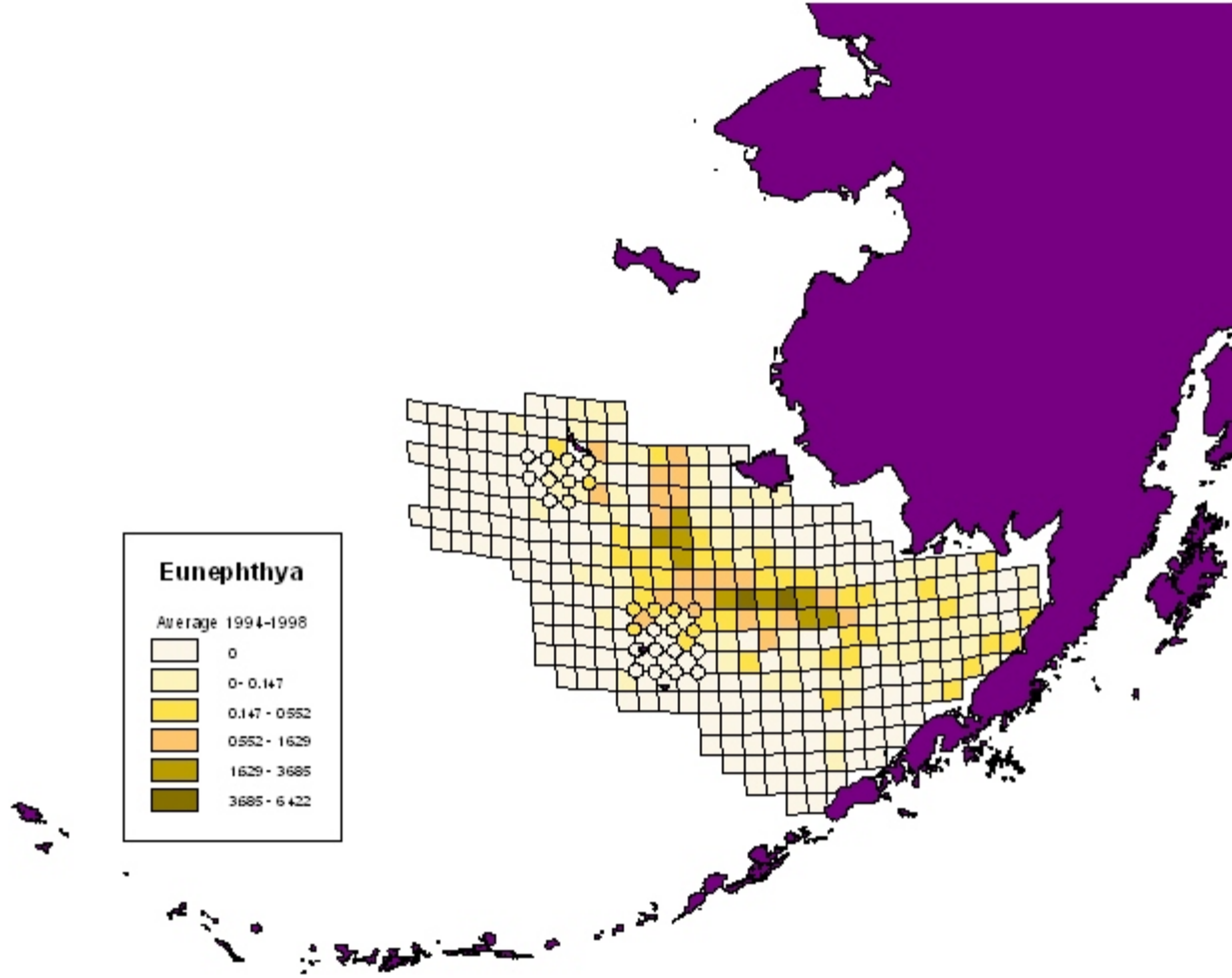
Figure 3.2-41. Distribution of Hydroids (kg/ha)



○ indicates standard areas of higher density sampling relative to the 20-nmi sampling grid.

Source: <http://www.afsc.noaa.gov/groundfish/HAPC/EBScontents.htm>

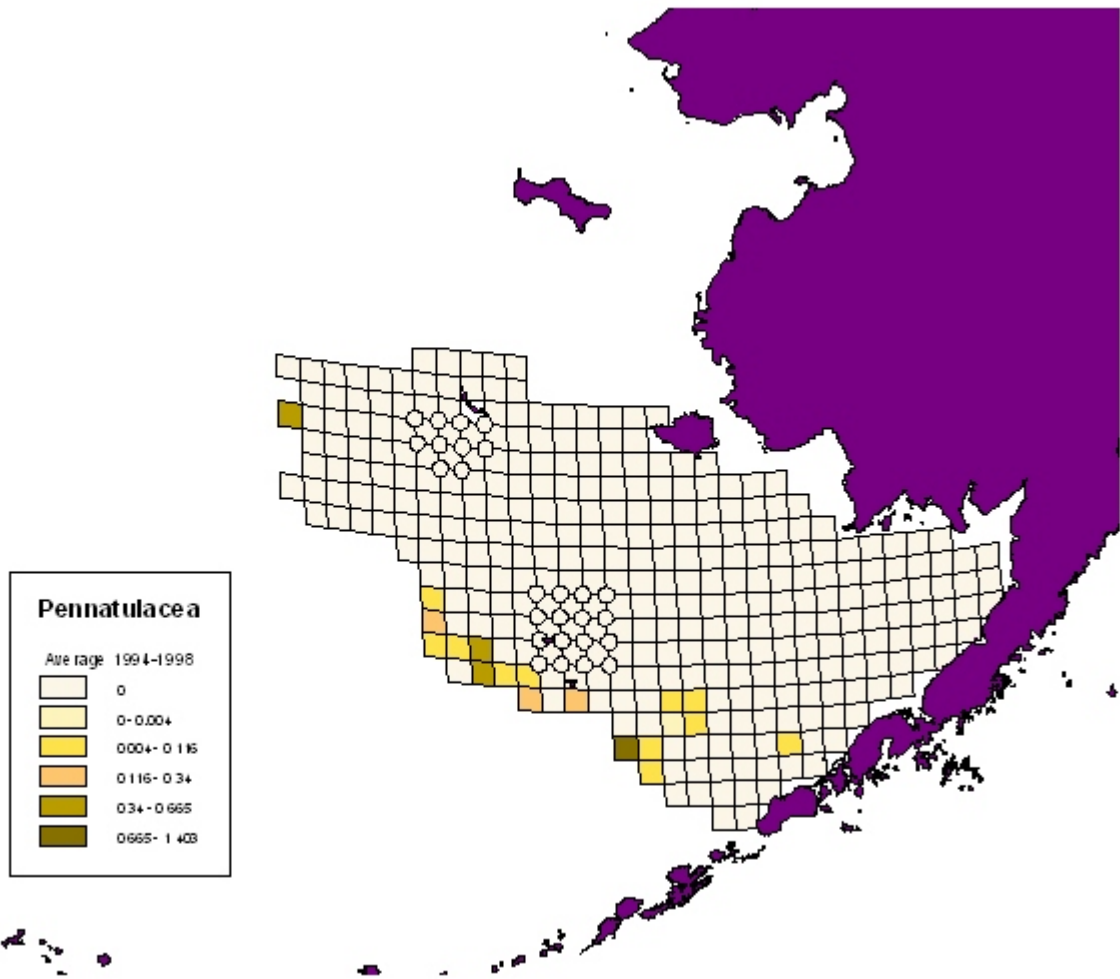
Figure 3.2-42. Distribution of Sea Raspberries (kg/ha)



○ indicates standard areas of higher density sampling relative to the 20-nmi sampling grid.

Source: <http://www.afsc.noaa.gov/groundfish/HAPC/EBScontents.htm>

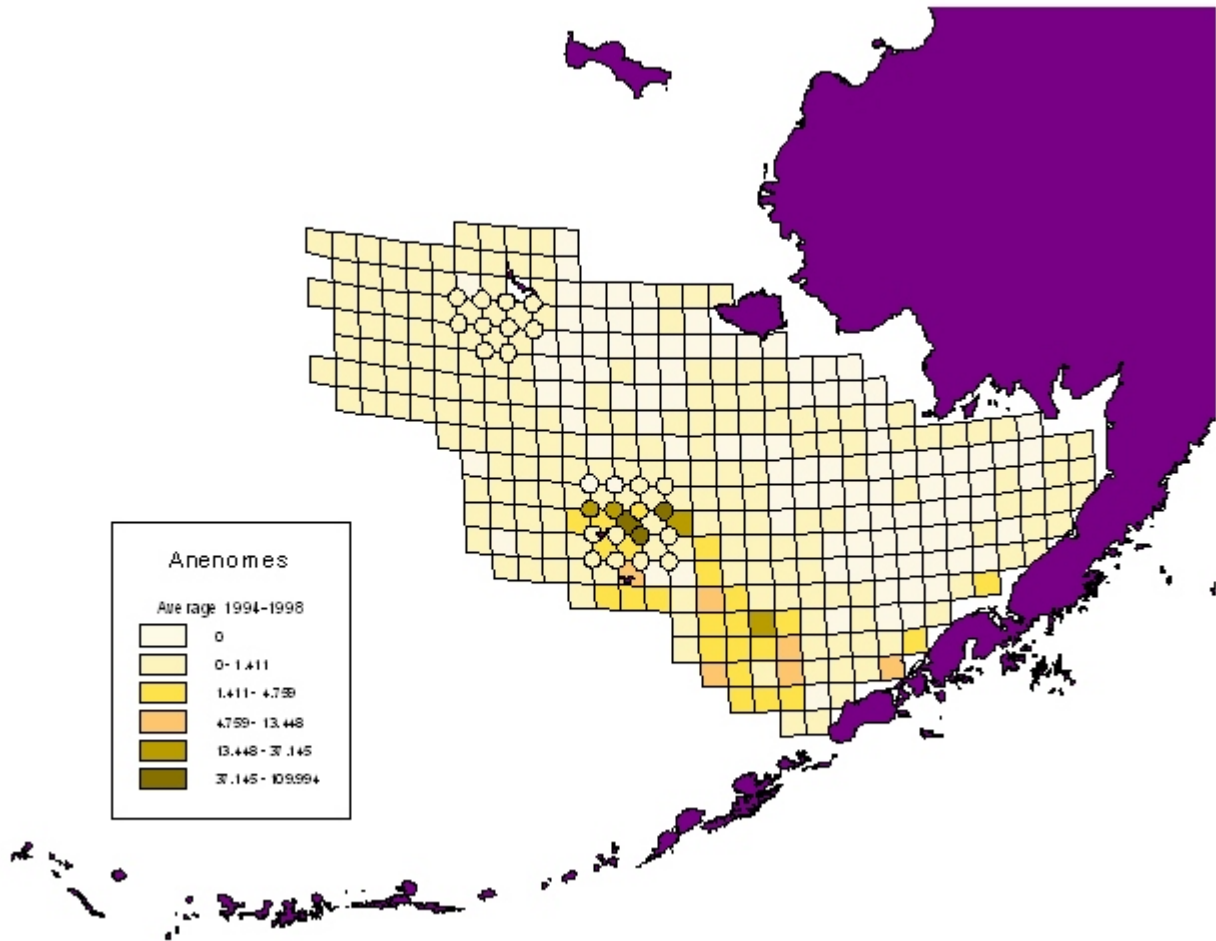
Figure 3.2-43. Distribution of Sea Pen (kg/ha)



○ indicates standard areas of higher density sampling relative to the 20-nmi sampling grid.

Source: <http://www.afsc.noaa.gov/groundfish/HAPC/EBScontents.htm>

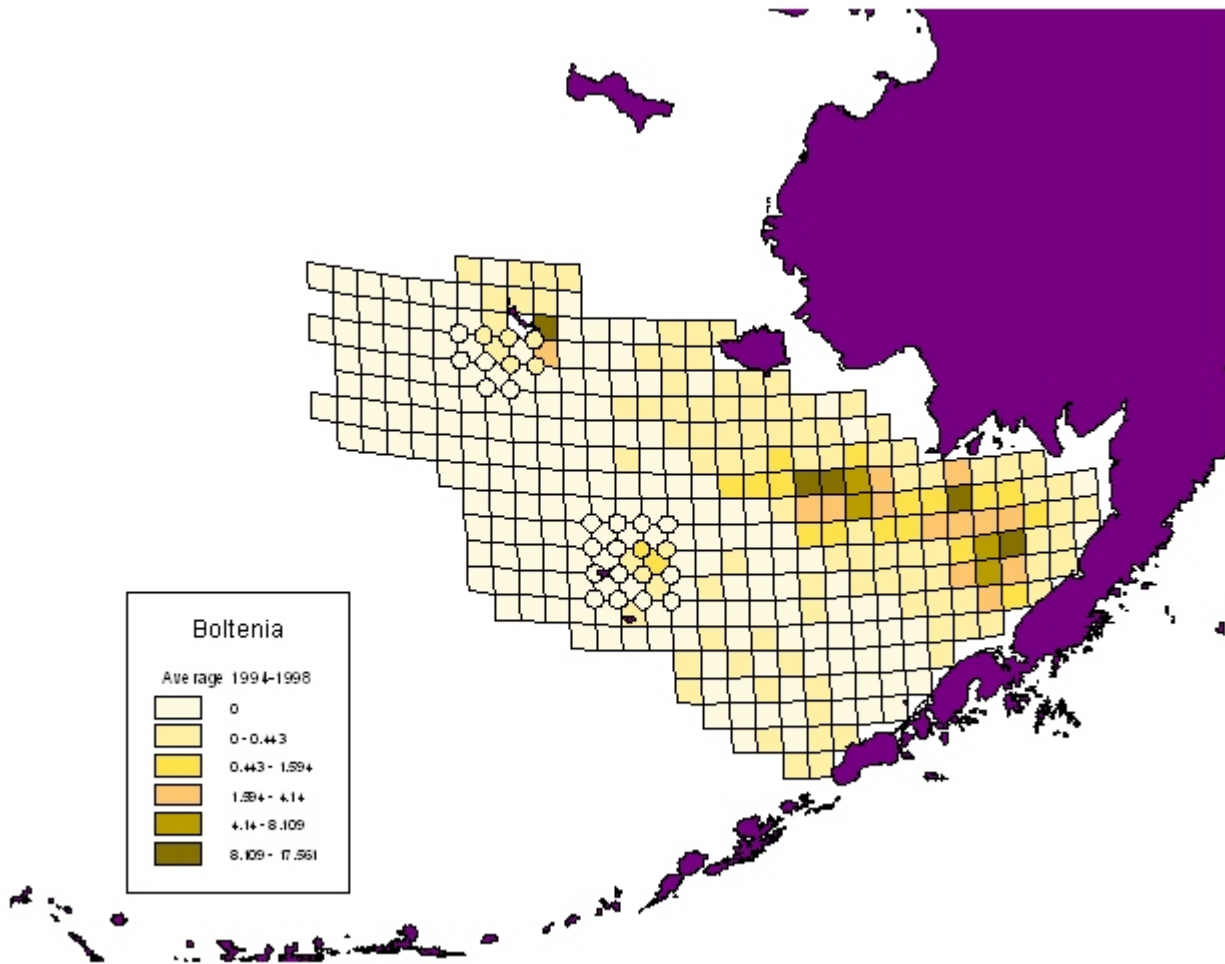
Figure 3.2-44. Distribution of Anemones (kg/ha)



○ indicates standard areas of higher density sampling relative to the 20-nmi sampling grid.

Source: <http://www.afsc.noaa.gov/groundfish/HAPC/EBScontents.htm>

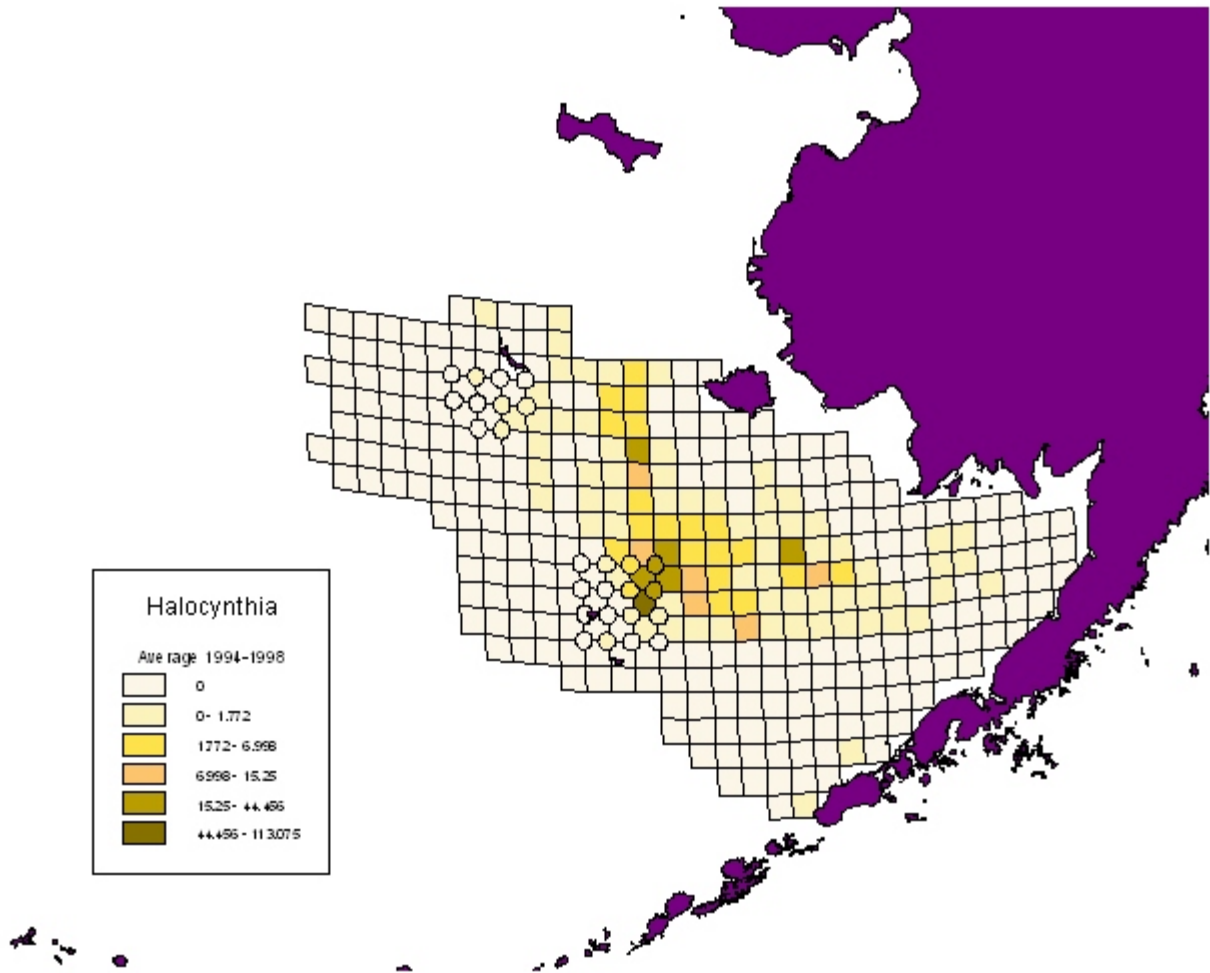
Figure 3.2-45. Distribution of Sea Onion (kg/ha)



○ indicates standard areas of higher density sampling relative to the 20-nmi sampling grid.

Source: <http://www.afsc.noaa.gov/groundfish/HAPC/EBScontents.htm>

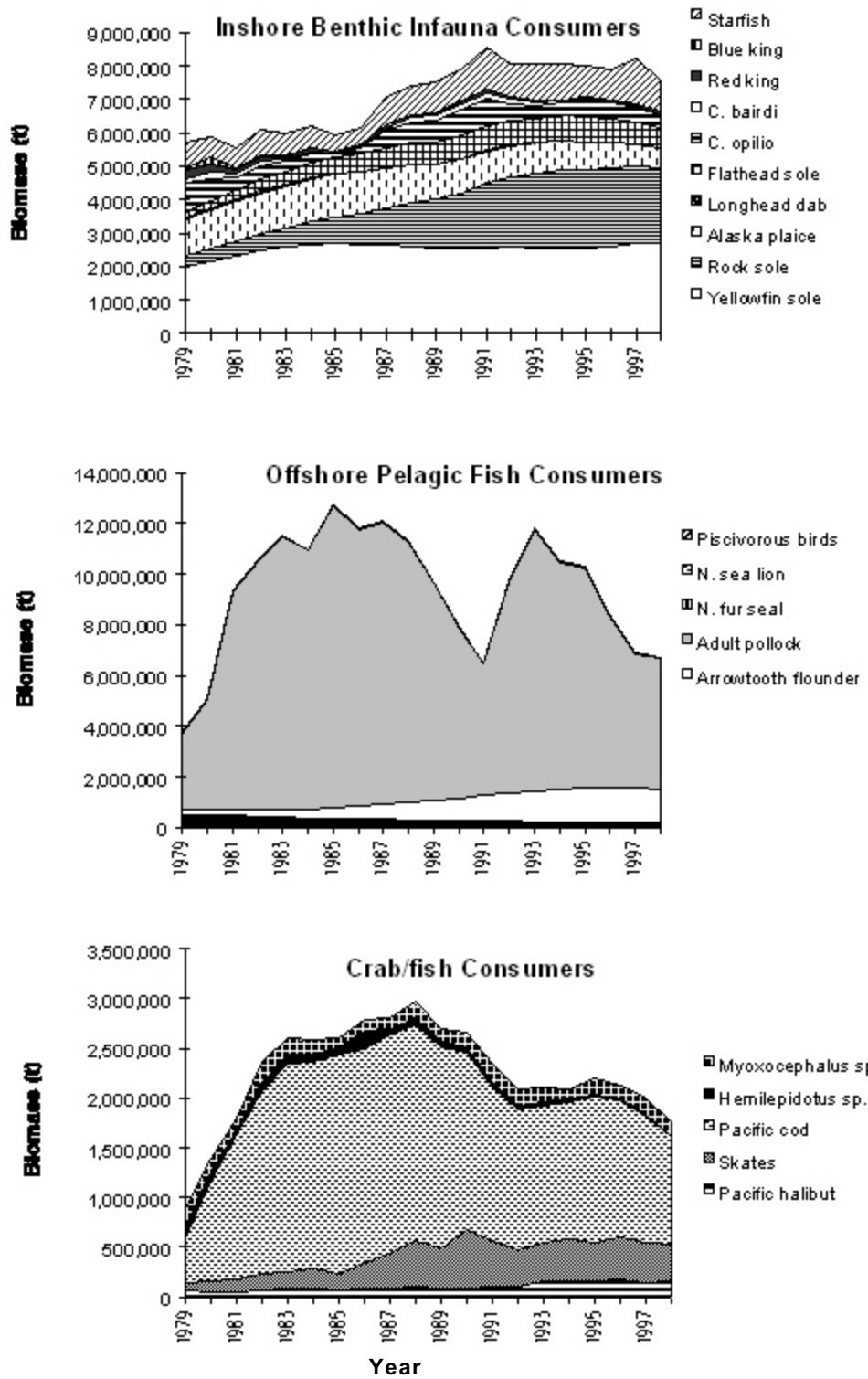
Figure 3.2-46. Distribution of Sea Peach (kg/ha)



○ indicates standard areas of higher density sampling relative to the 20-nmi sampling grid.

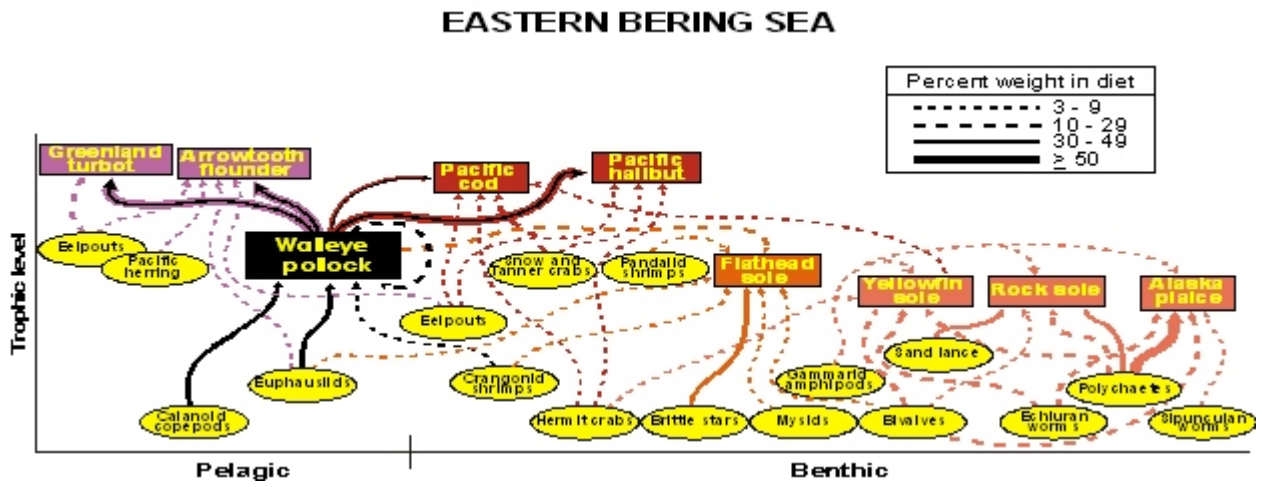
Source: <http://www.afsc.noaa.gov/groundfish/HAPC/EBScontents.htm>

Figure 3.3-1. Biomass Trends in Bering Sea Trophic Guilds, 1979 to 1998



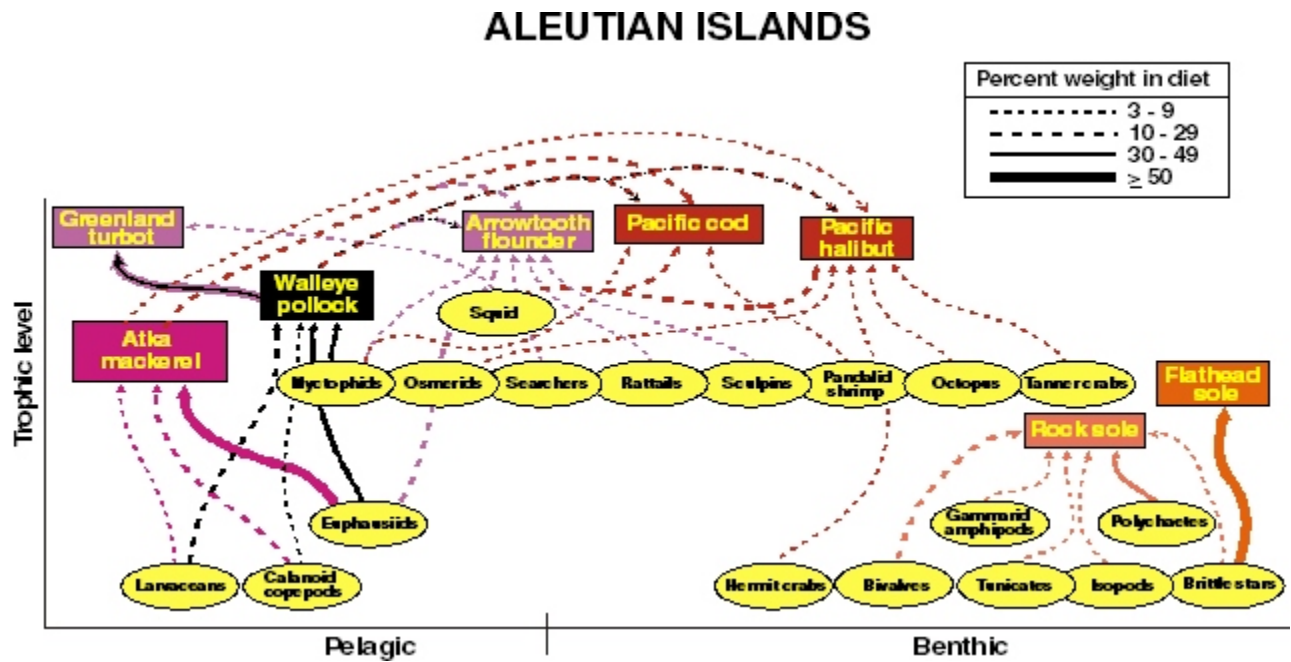
Source: NMFS 2001b

Figure 3.3-2. Trophic Interactions of Key Eastern Bering Sea Groundfish



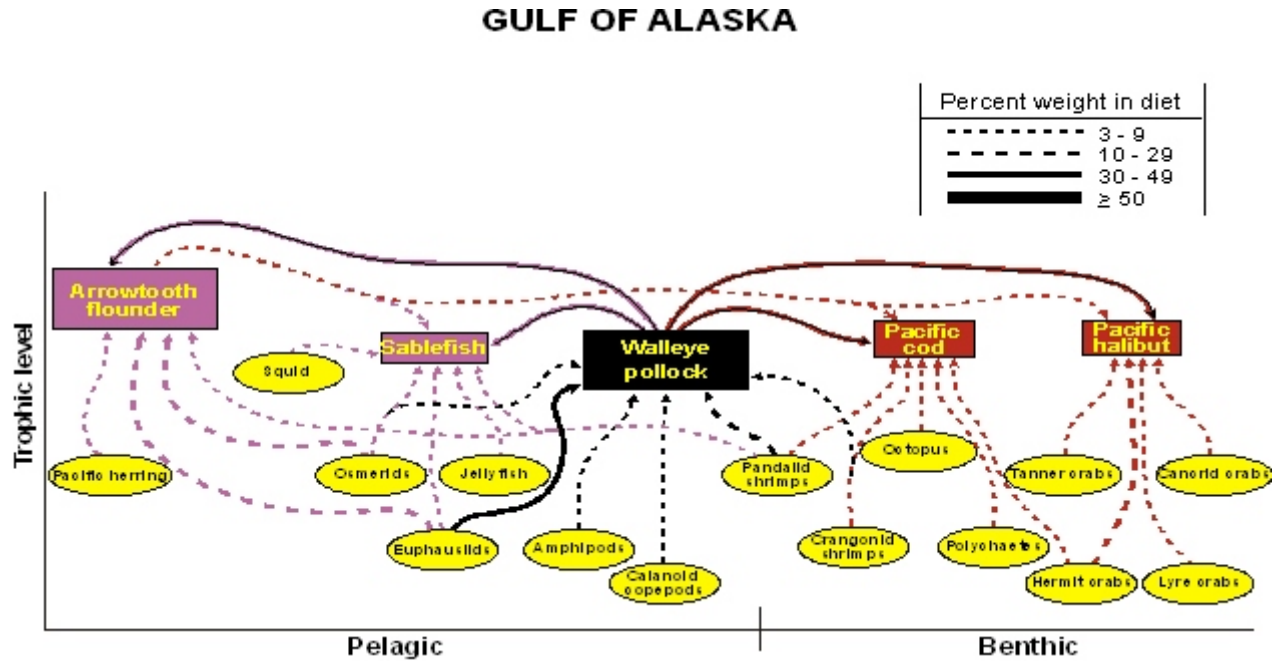
Source: NMFS 2001a

Figure 3.3-3. Trophic Relationships of the Groundfishes in the Aleutian Islands



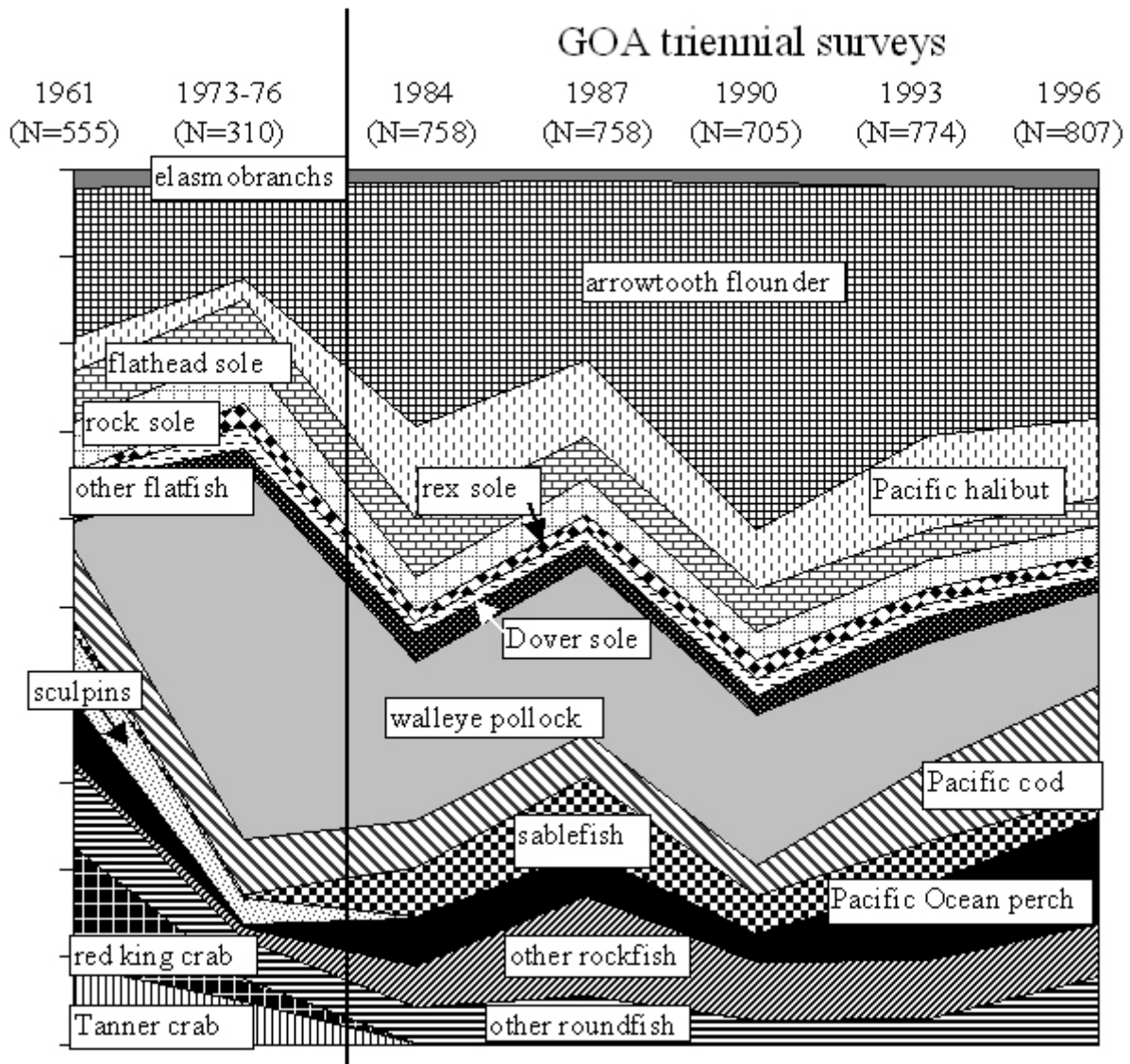
Source: NMFS 2001a

Figure 3.3-4. Trophic Relationships of the Groundfishes in the Gulf of Alaska



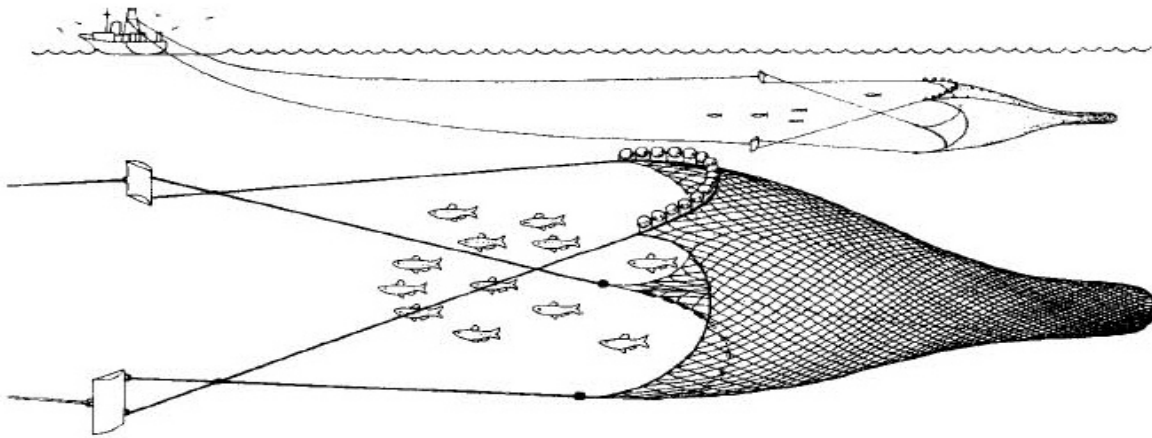
Source: NMFS 2001a

Figure 3.3-5. Trend in Index of Species Composition



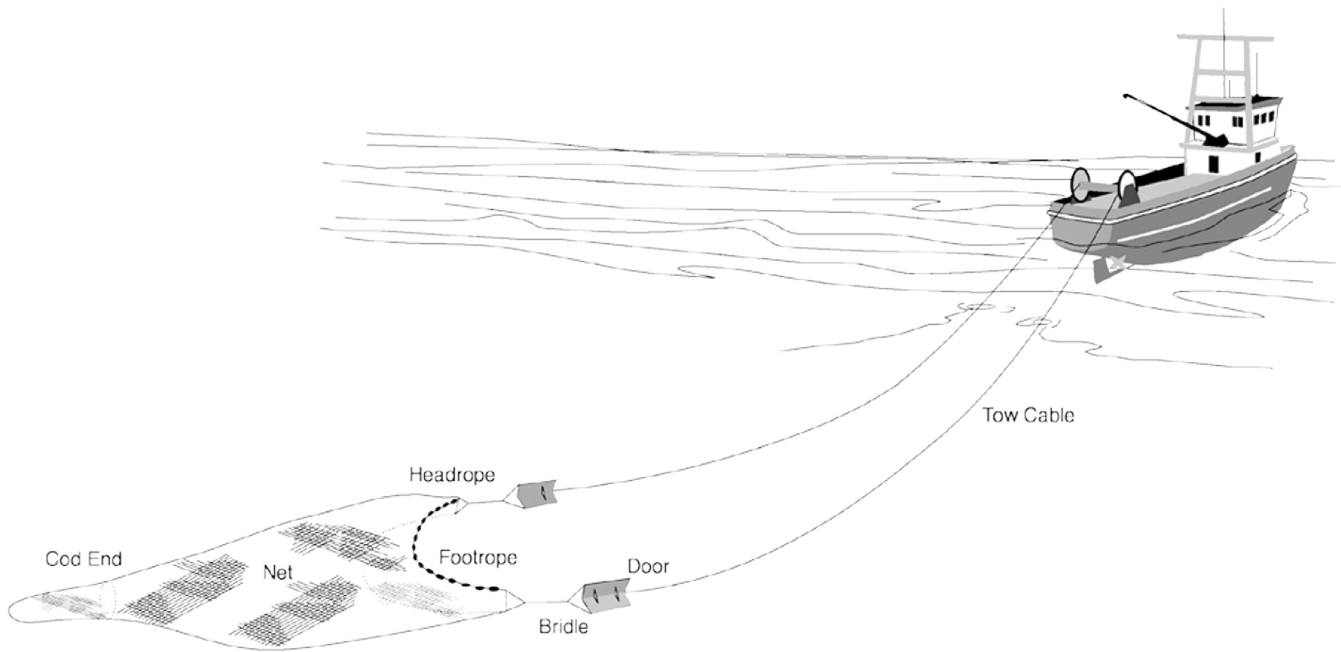
Note: These data are based on ordination of species abundance data from five triennial surveys on Gulf of Alaska shelf and slope with approximate 95 percent confidence interval.
Source: NMFS 2001a

Figure 3.4-1. Pelagic Trawl



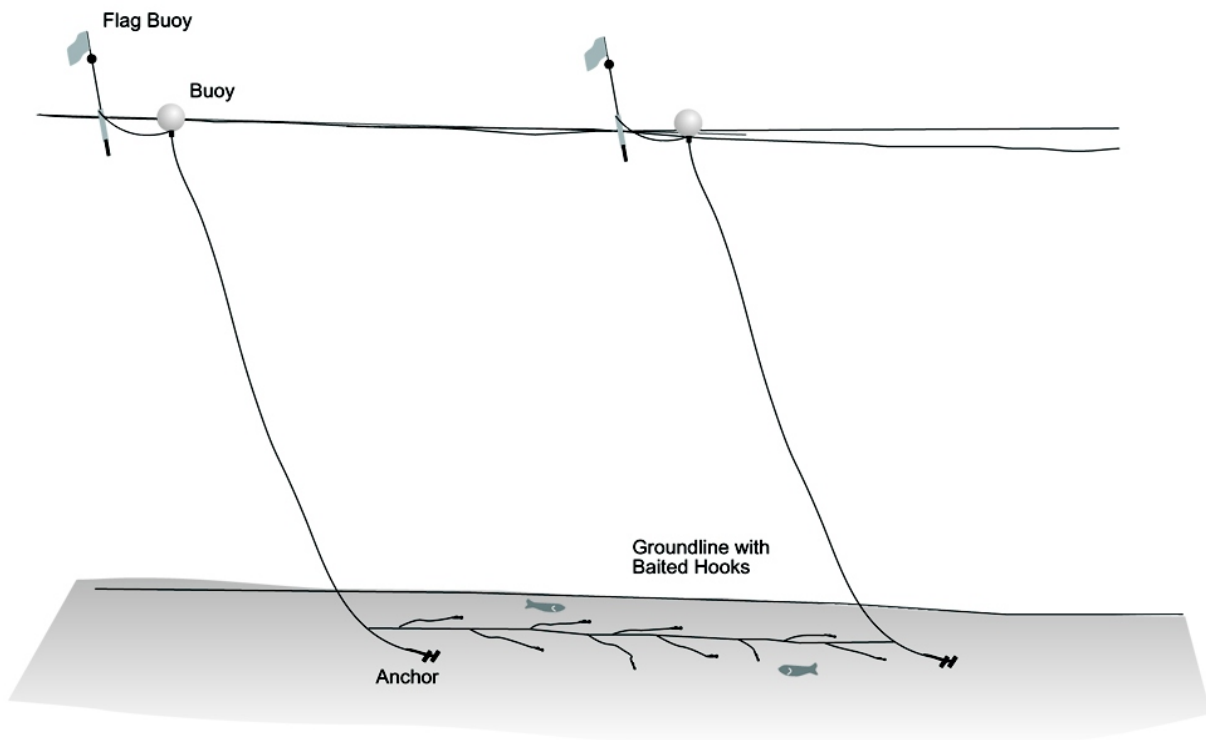
Source: Jennings et al. 2001
Permission to use figure requested by Craig Rose (pending)

Figure 3.4-2. Bottom Trawl



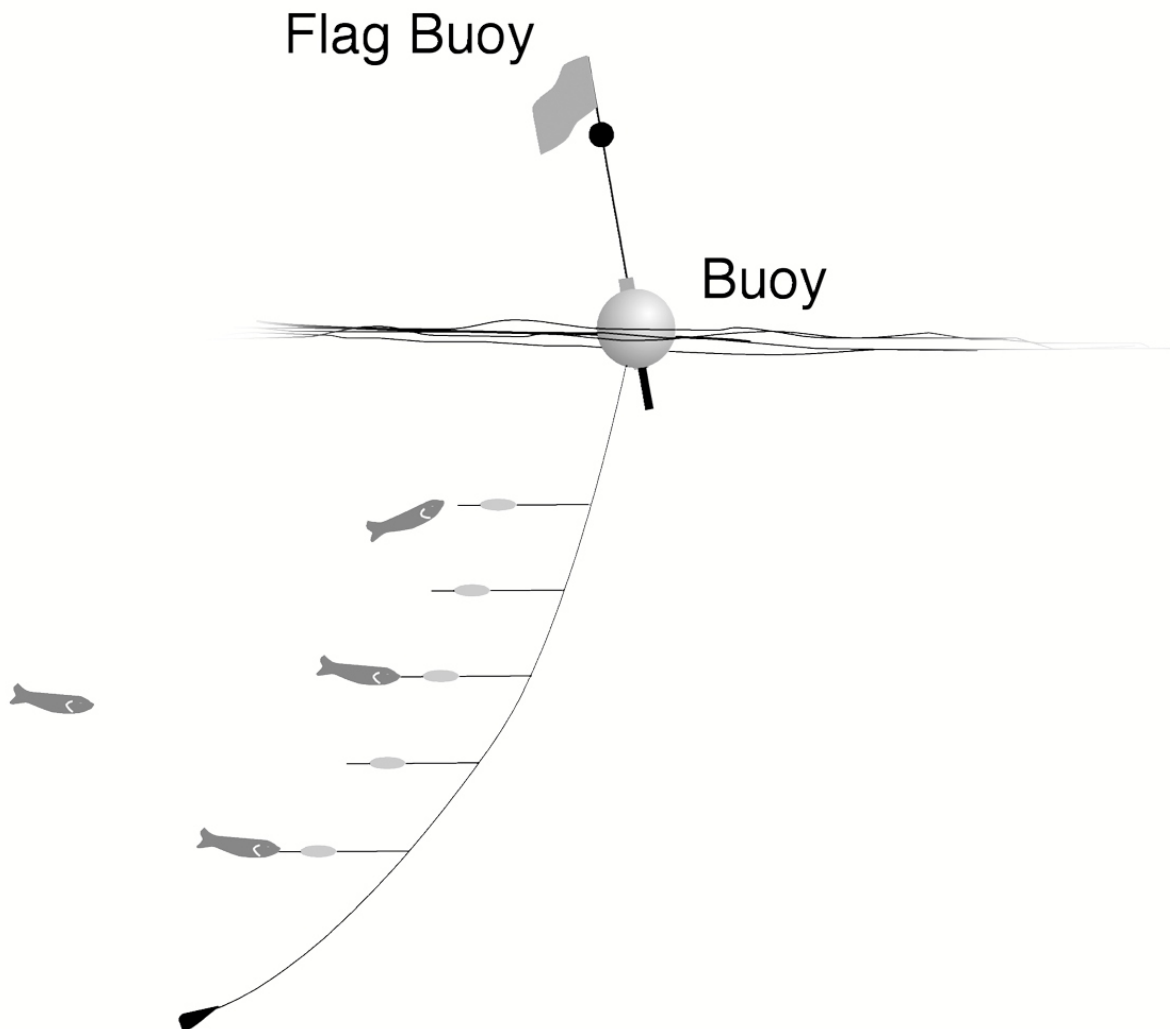
Source: K. Richards, Tetra Tech FW, Bothell, WA

Figure 3.4-3. Set Longline Gear



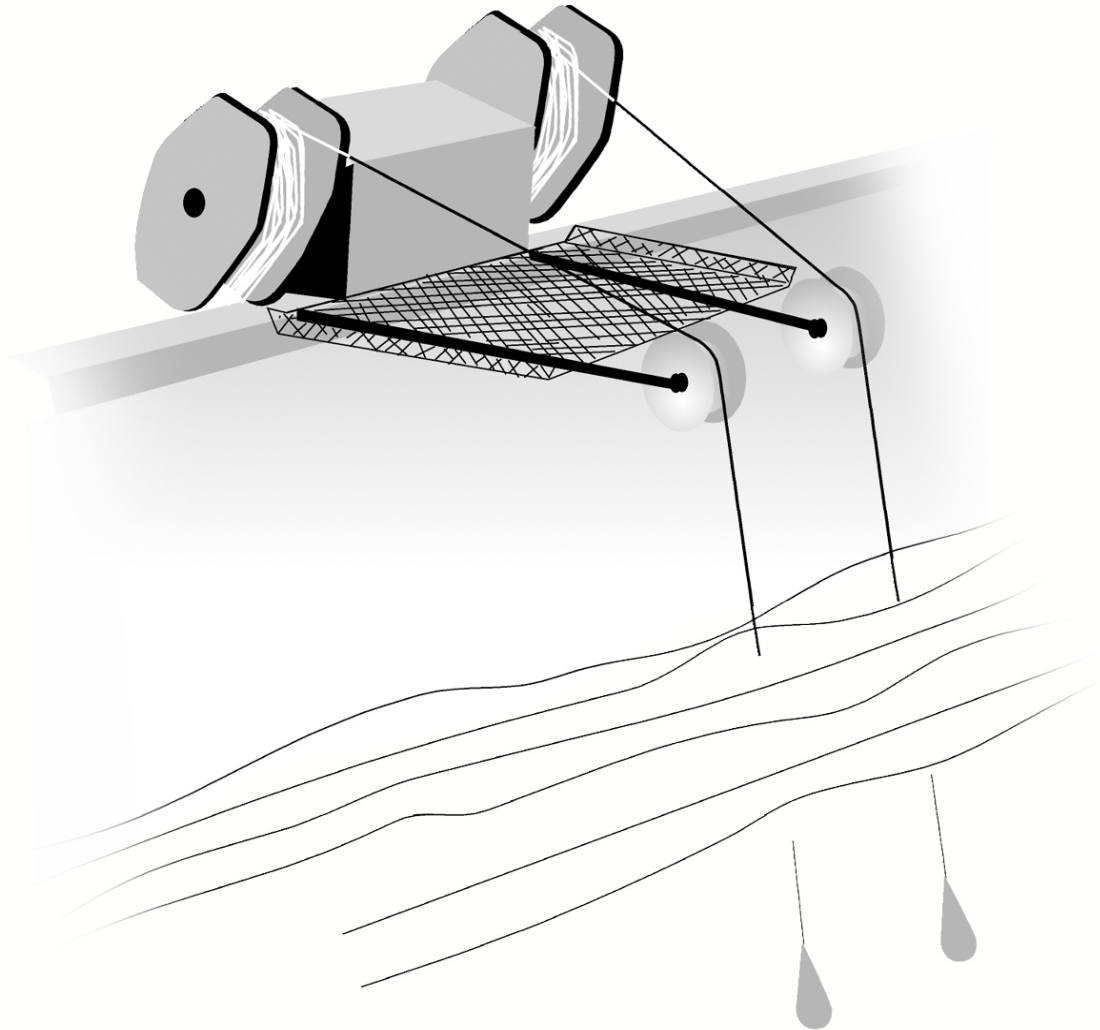
Source: K. Richards, Tetra Tech FW, Bothell, WA

Figure 3.4-4. Vertical Longline



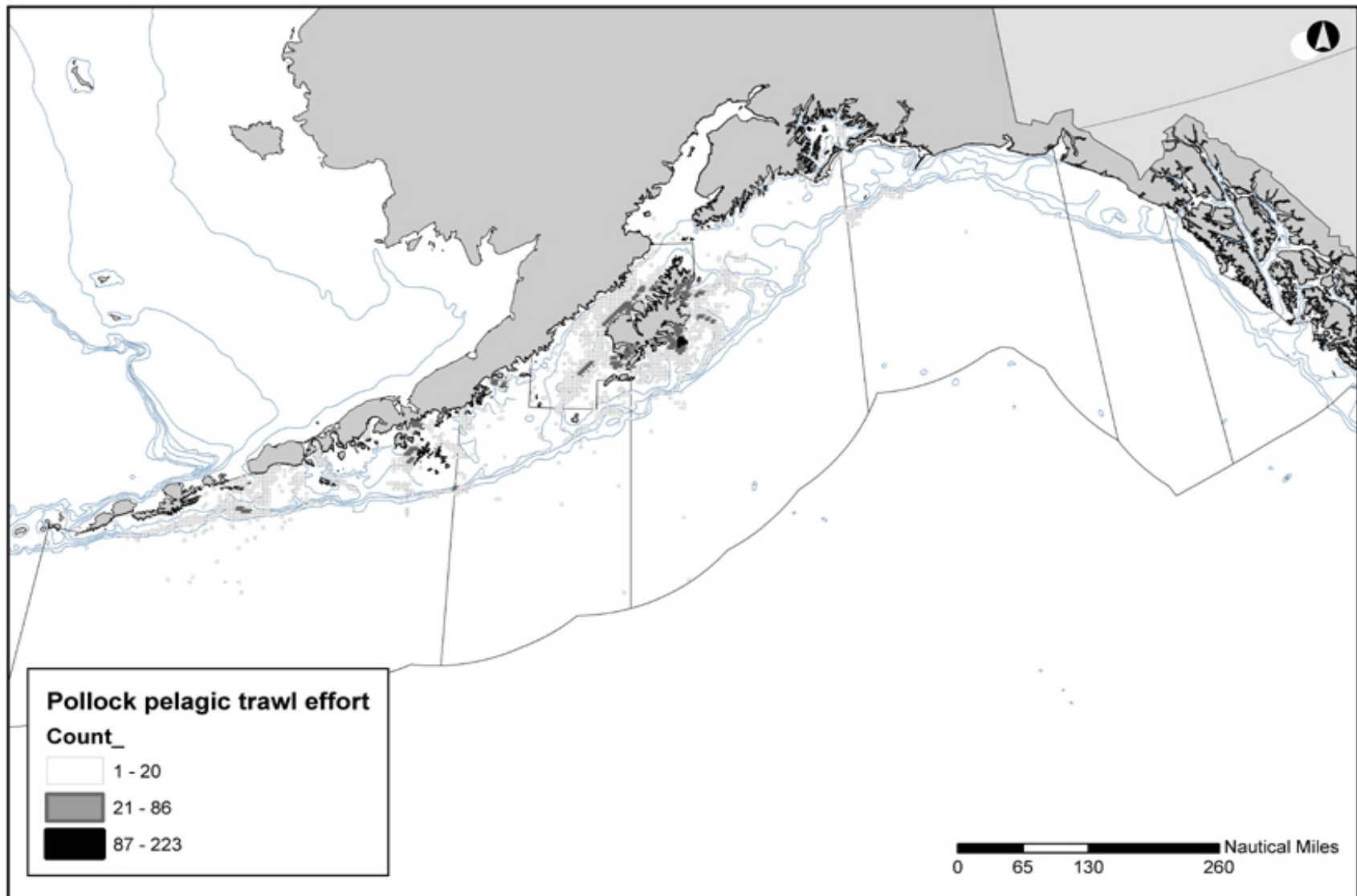
Source: K. Richards, Tetra Tech FW, Bothell, WA

Figure 3.4-5. Jig Machine



Source: K. Richards, Tetra Tech FW, Bothell, WA

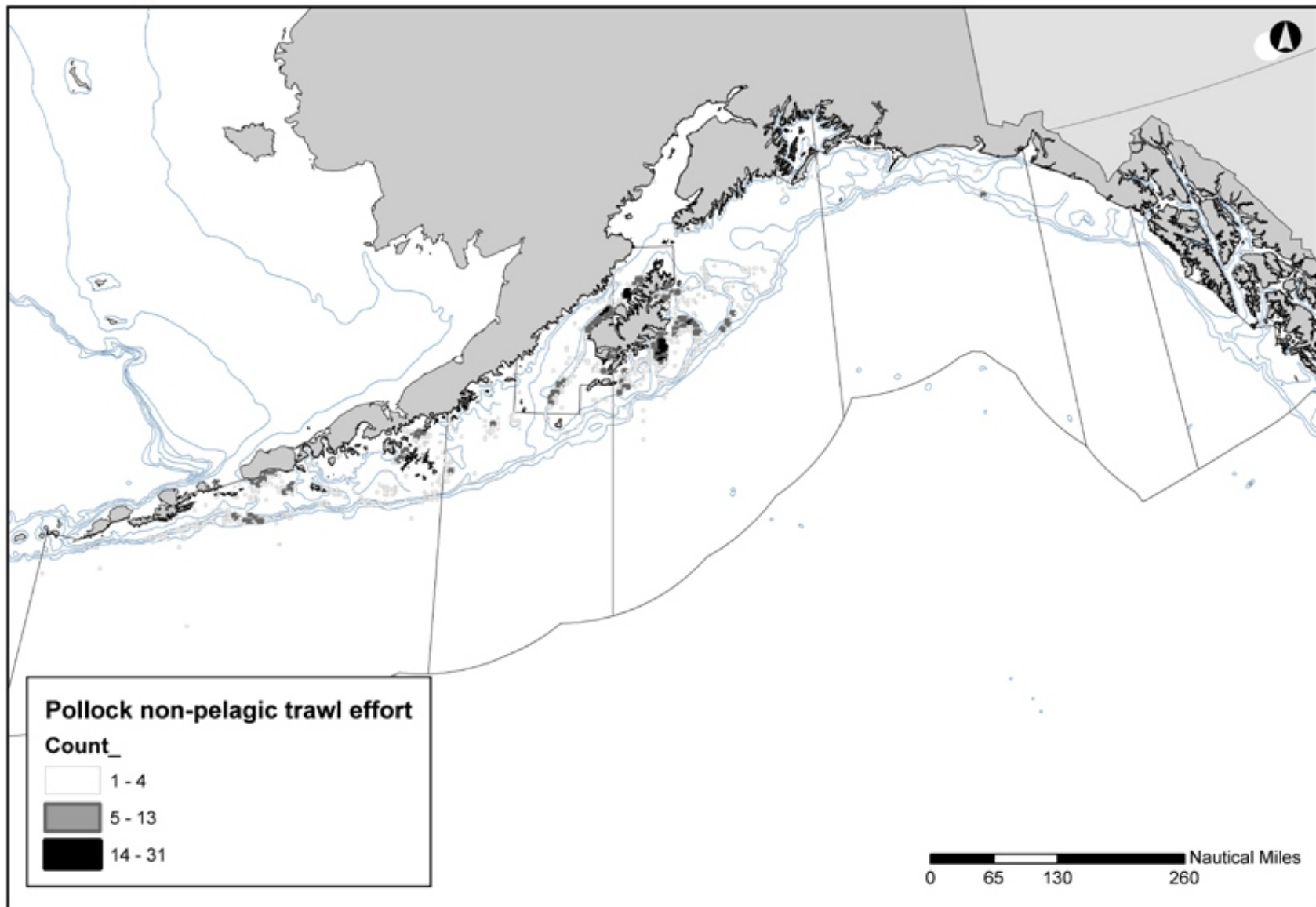
Figure 3.4-6. Gulf of Alaska: 1990-2002 Observed Pollock Pelagic Trawl Effort (Sets/25 km²)



Note: (Sets/25 km²) = Summed for 1990 to 2002

Source: Cathy Coon, NPFMC Staff, North Pacific Observer Program Data

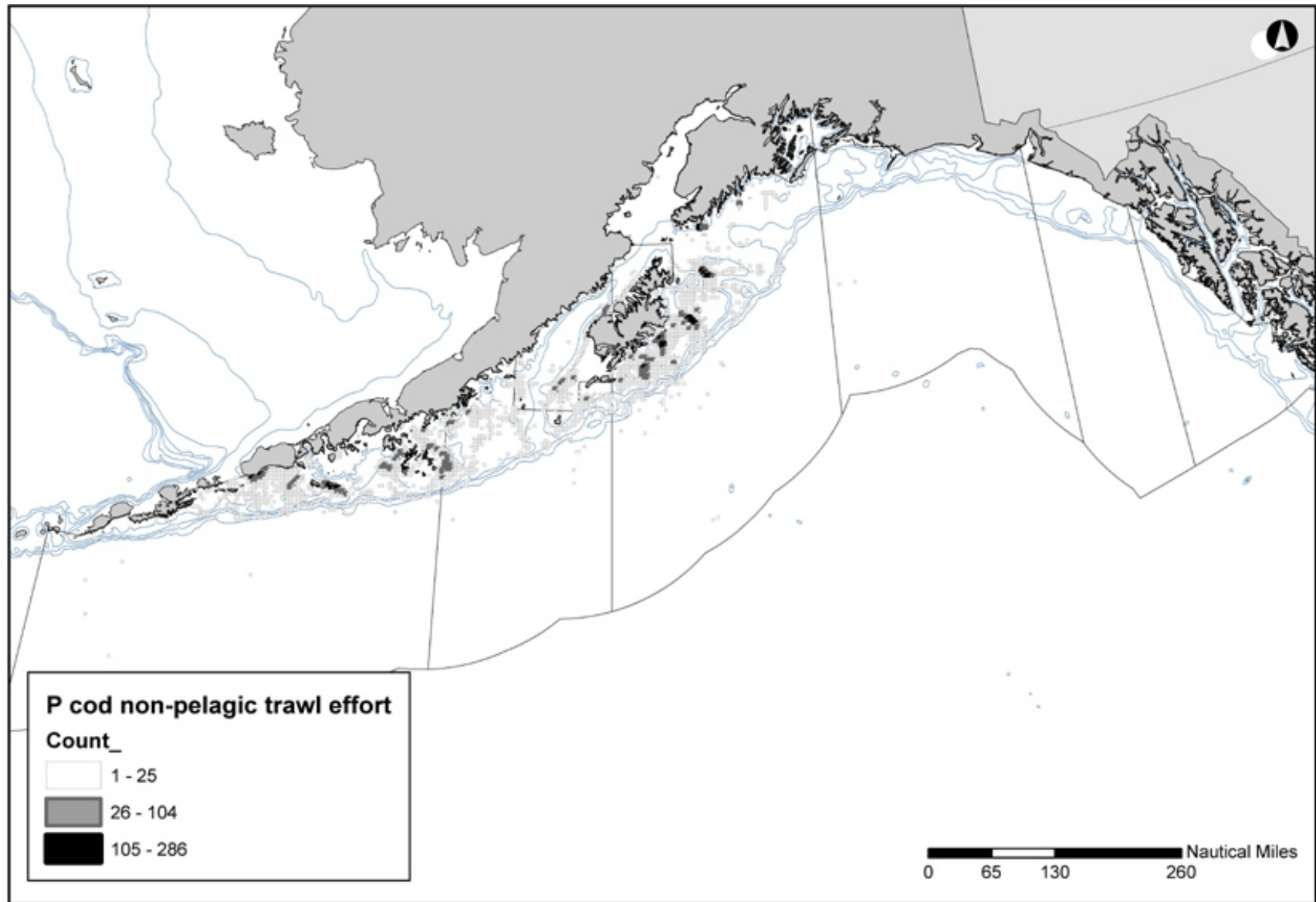
Figure 3.4-7. Gulf of Alaska: 1990-2002 Observed Pollock Non-Pelagic (Bottom) Trawl Effort (Sets/25 km²)



Note: (Sets/25 km²) = Summed for 1990 to 2002

Source: Cathy Coon, NPFMC Staff, North Pacific Observer Program Data

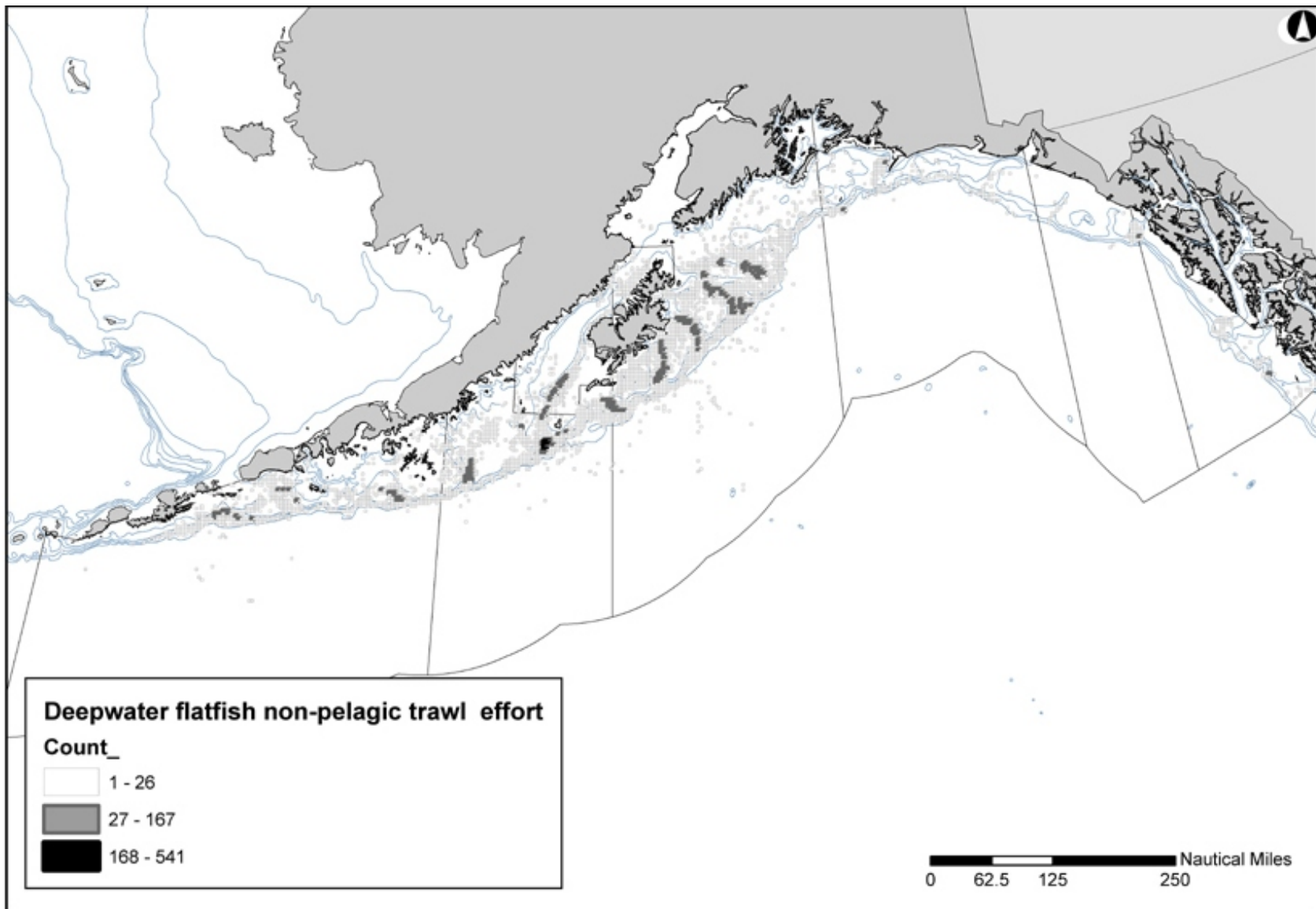
Figure 3.4-8. Gulf of Alaska: 1990-2002 Observed Pacific Cod Non-Pelagic (Bottom) Trawl Effort (Sets/25 km²)



Note: (Sets/25 km²) = Summed for 1990 to 2002

Source: Cathy Coon, NPFMC Staff, North Pacific Observer Program Data

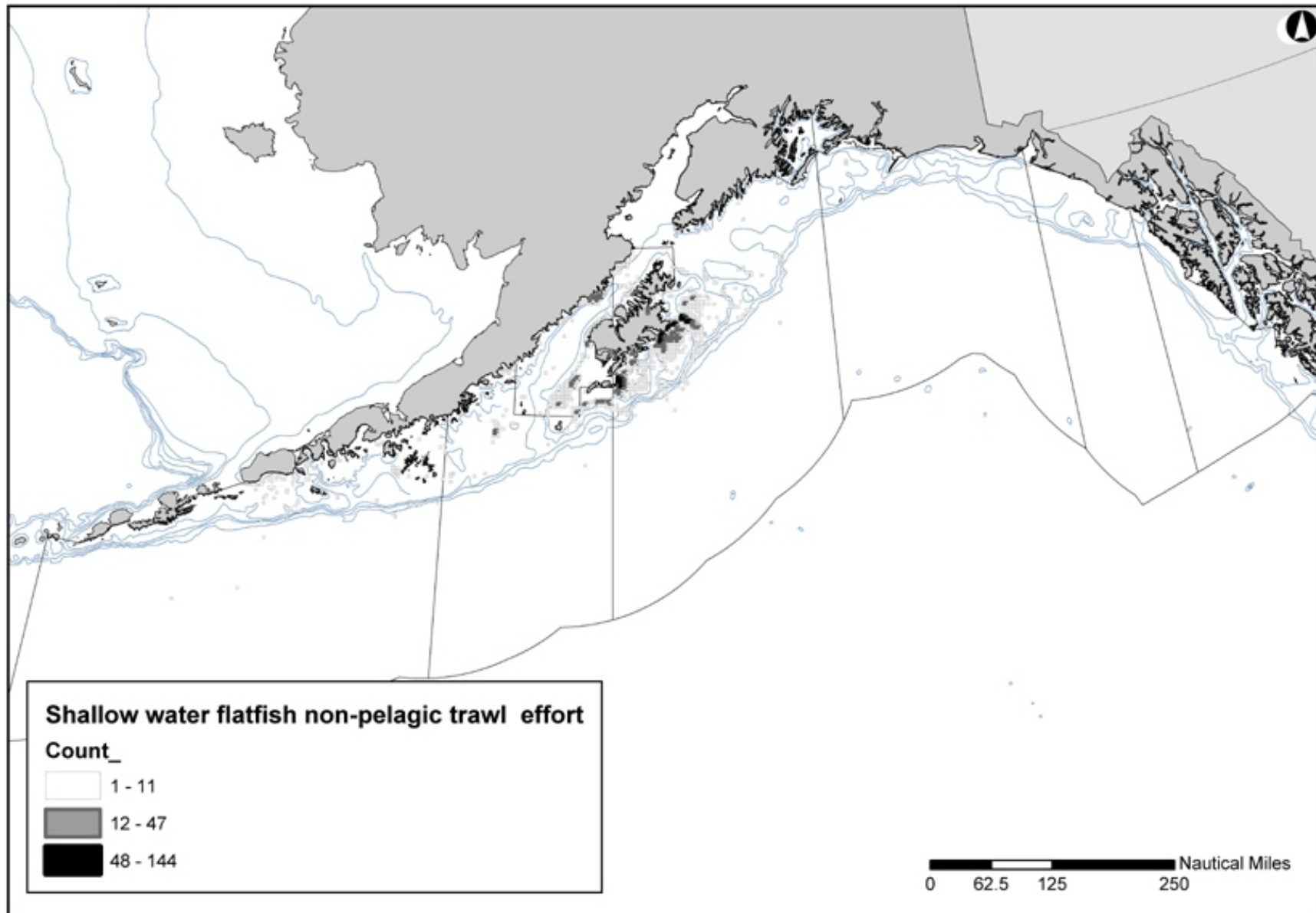
Figure 3.4-9. Gulf of Alaska: 1990-2002 Observed Deepwater Flatfish Non-Pelagic Trawl Effort (Sets/25 km²)



Note: (Sets/25 km²) = Summed for 1990 to 2002

Source: Cathy Coon, NPFMC Staff, North Pacific Observer Program Data

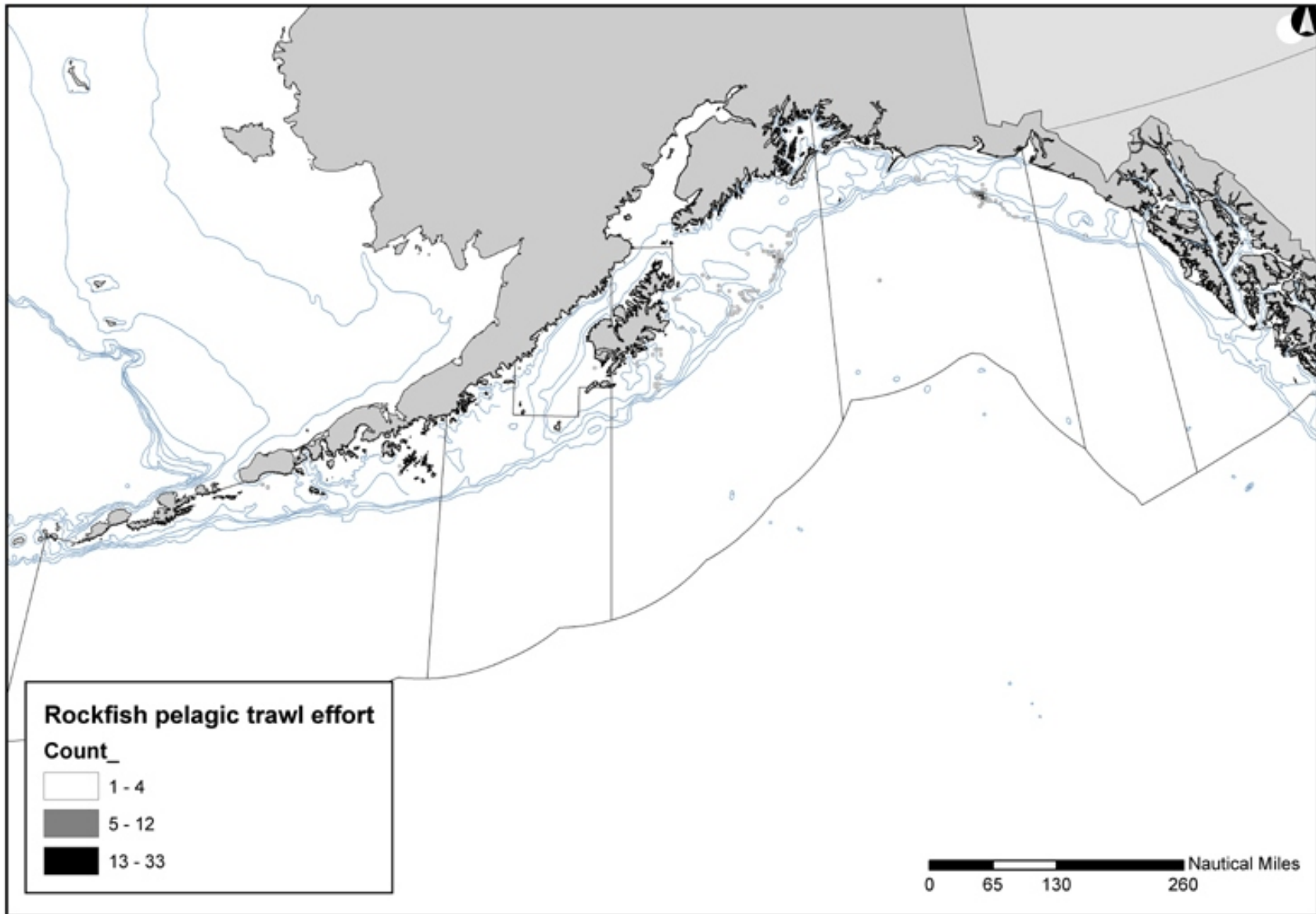
Figure 3.4-10. Gulf of Alaska: 1990-2002 Observed Shallow Water Flatfish Non-Pelagic Trawl Effort (Sets/25 km²)



Note: (Sets/25 km²) = Summed for 1990 to 2002

Source: Cathy Coon, NPFMC Staff, North Pacific Observer Program Data

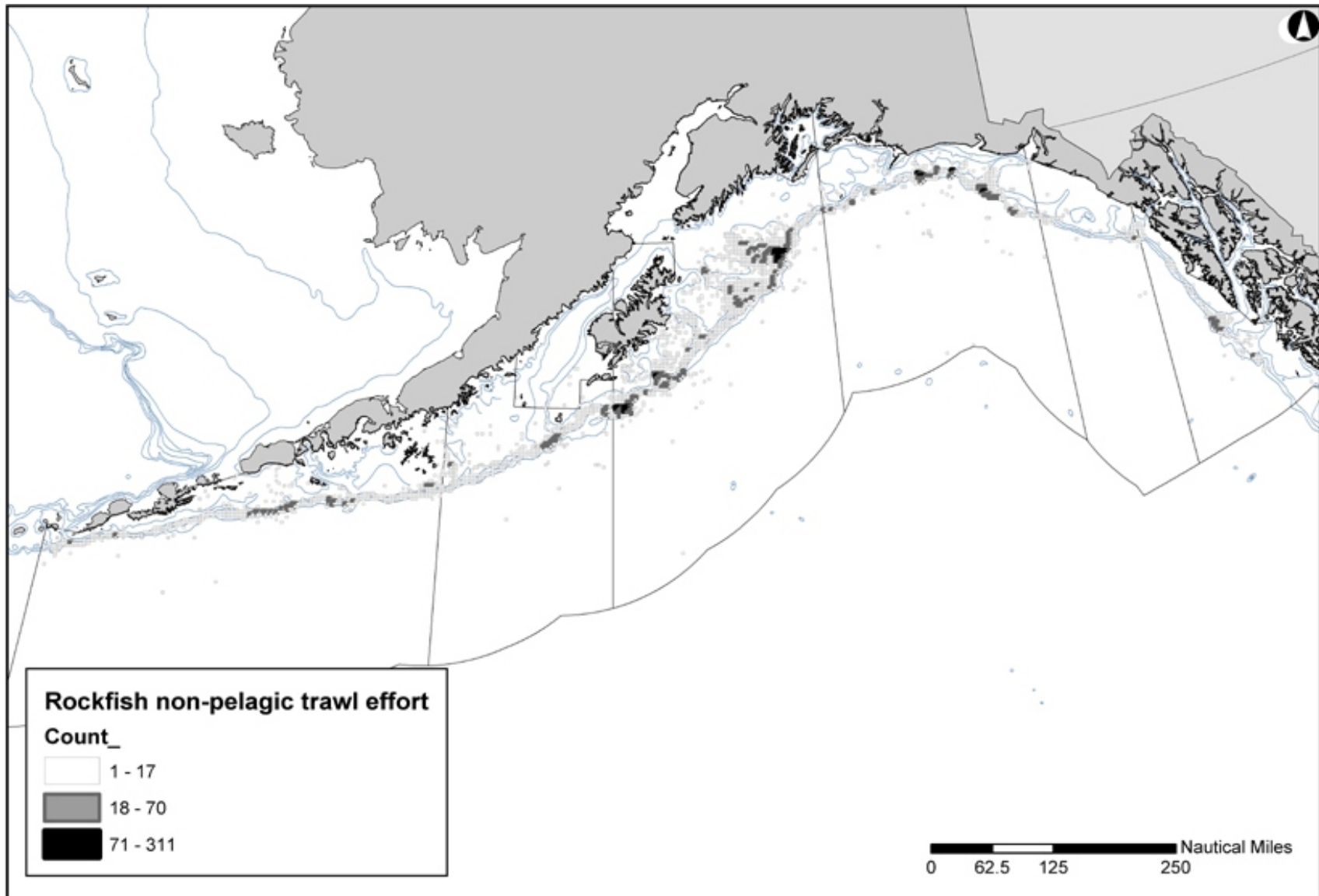
Figure 3.4-11. Gulf of Alaska: 1990-2002 Observed Slope Rockfish Pelagic Trawl Effort (Sets/25 km²)



Note: (Sets/25 km²) = Summed for 1990 to 2002

Source: Cathy Coon, NPFMC Staff, North Pacific Observer Program Data

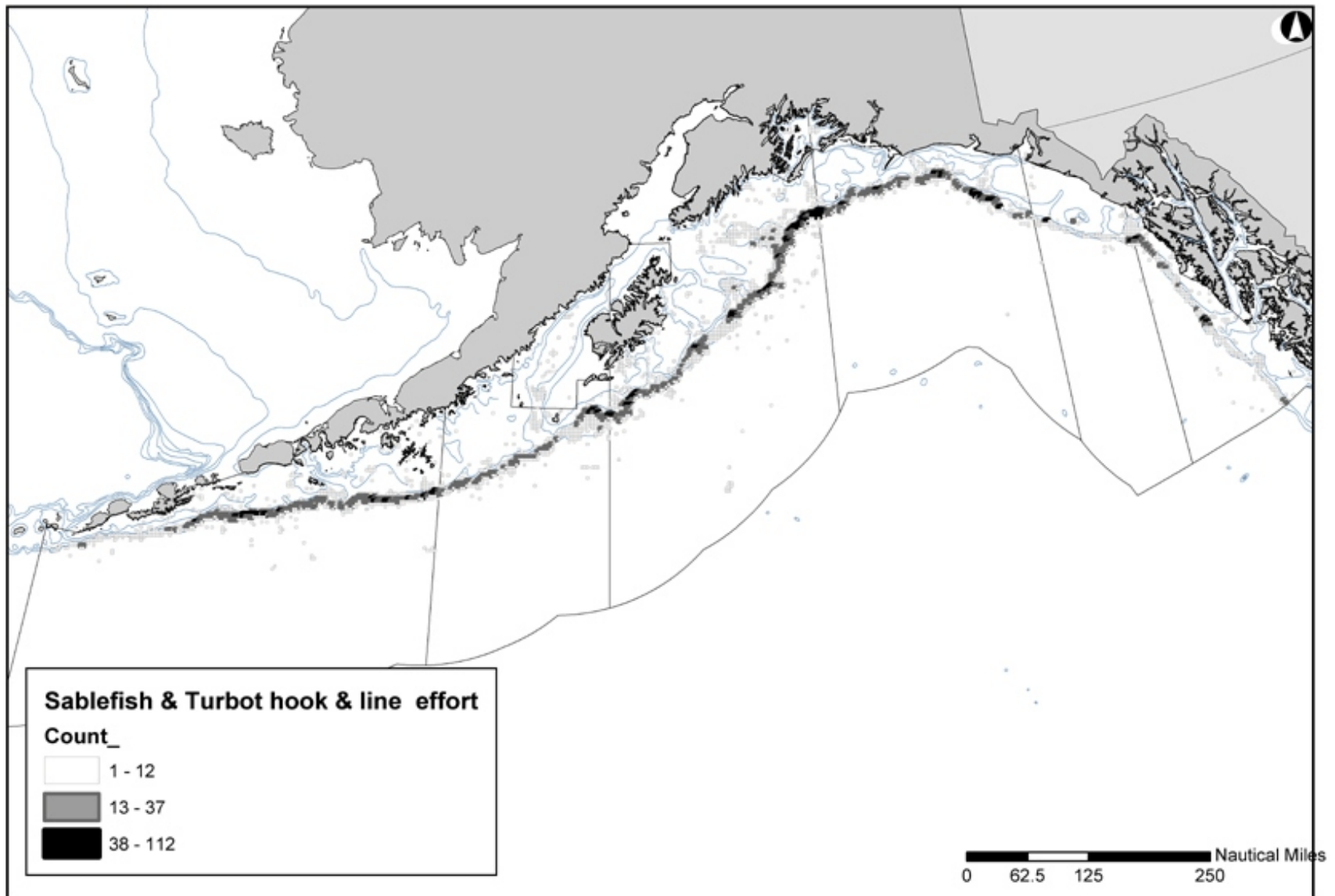
Figure 3.4-12. Gulf of Alaska: 1990-2002 Observed Rockfish Non-Pelagic (Bottom) Trawl Effort (Sets/25 km²)



Note: (Sets/25 km²) = Summed for 1990 to 2002

Source: Cathy Coon, NPFMC Staff, North Pacific Observer Program Data

Figure 3.4-13. Gulf of Alaska: 1990-2002 Observed Sablefish and Turbot Hook and Line Effort (Sets/25 km²)



Note: (Sets/25 km²) = Summed for 1990 to 2002

Source: Cathy Coon, NPFMC Staff, North Pacific Observer Program Data