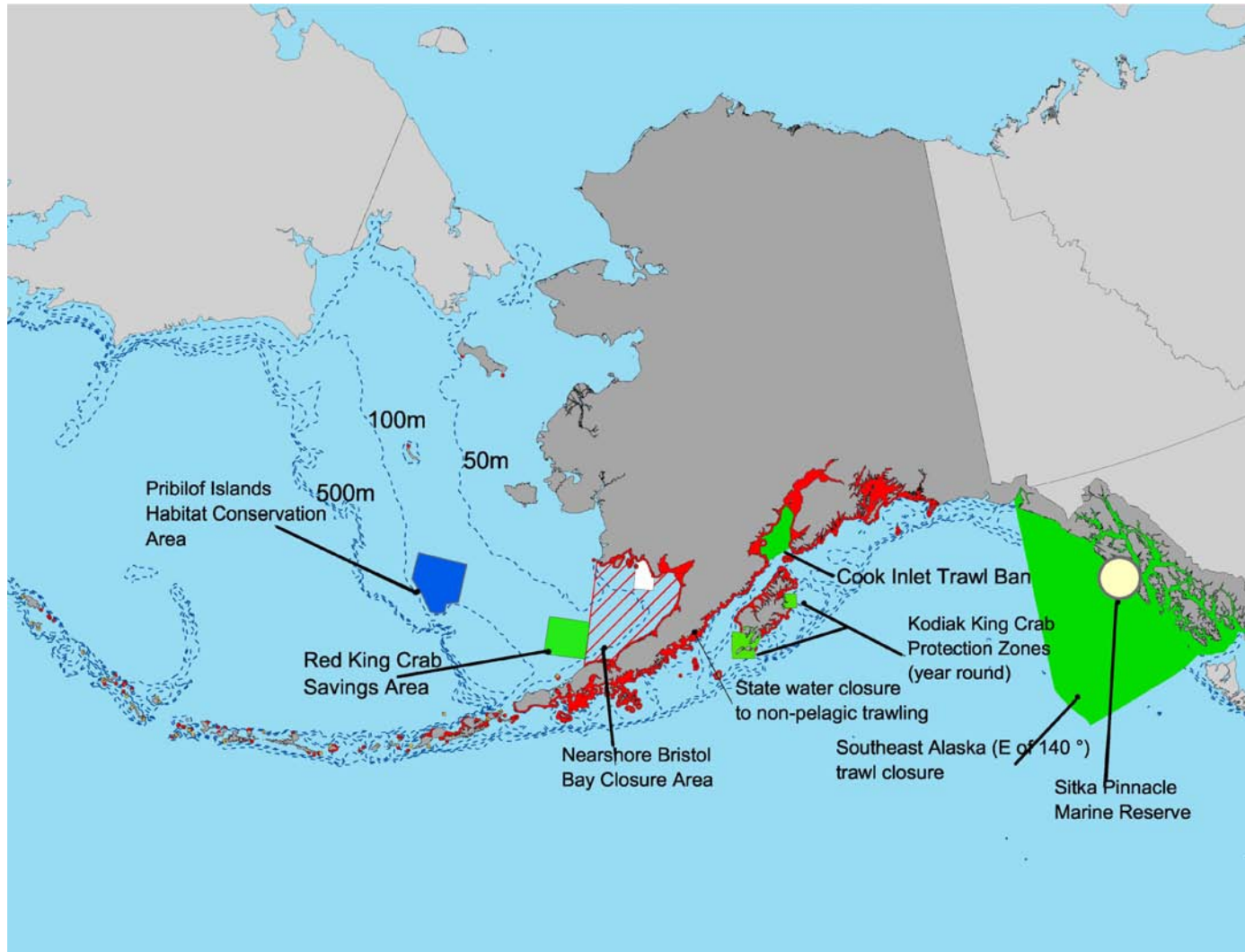


Figure 2-1. Areas Closed Year-round to Bottom Trawling



NOTE: Very limited state-managed bottom trawling occurs in some of the depicted areas. Beam trawling for shrimp is allowed in southeast Alaska, Prince William Sound, and the Kodiak area, although effort is extremely low.

Figure 2-2. State of Alaska's Catalog of Waters Regions

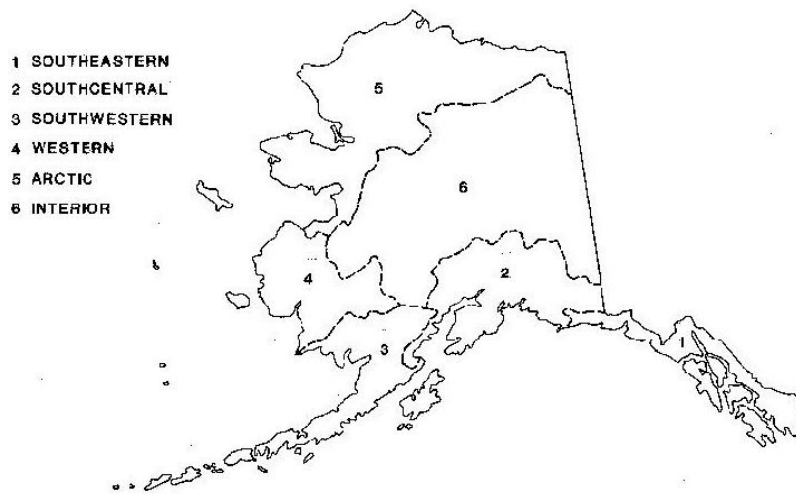


Figure 2-3. Alternative 2: Essential Fish Habitat for GOA Late Juvenile and Adult Pacific Ocean Perch

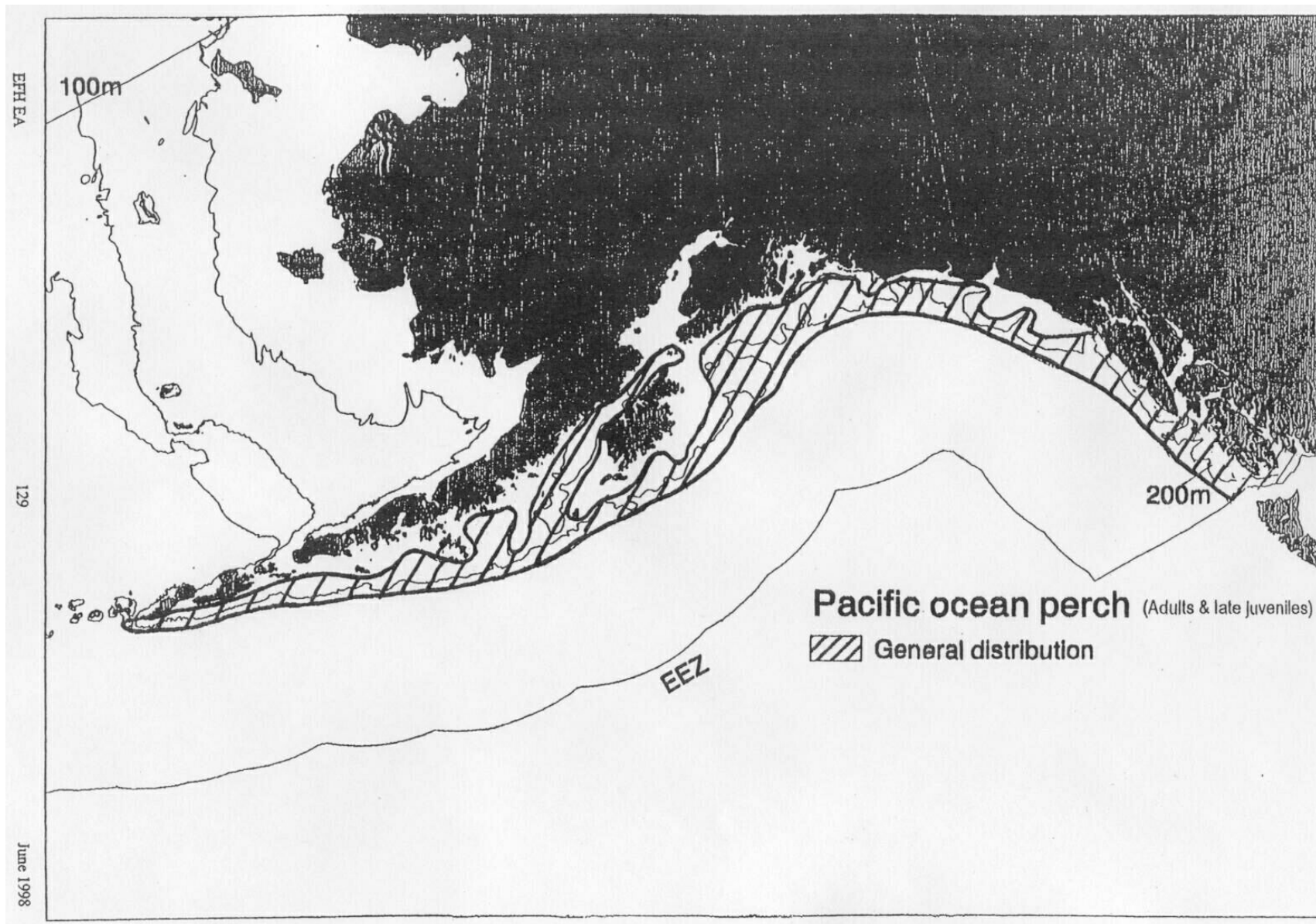


Figure 2-4. Alternative 2: Essential Fish Habitat for Late Juvenile and Adult Pacific Cod

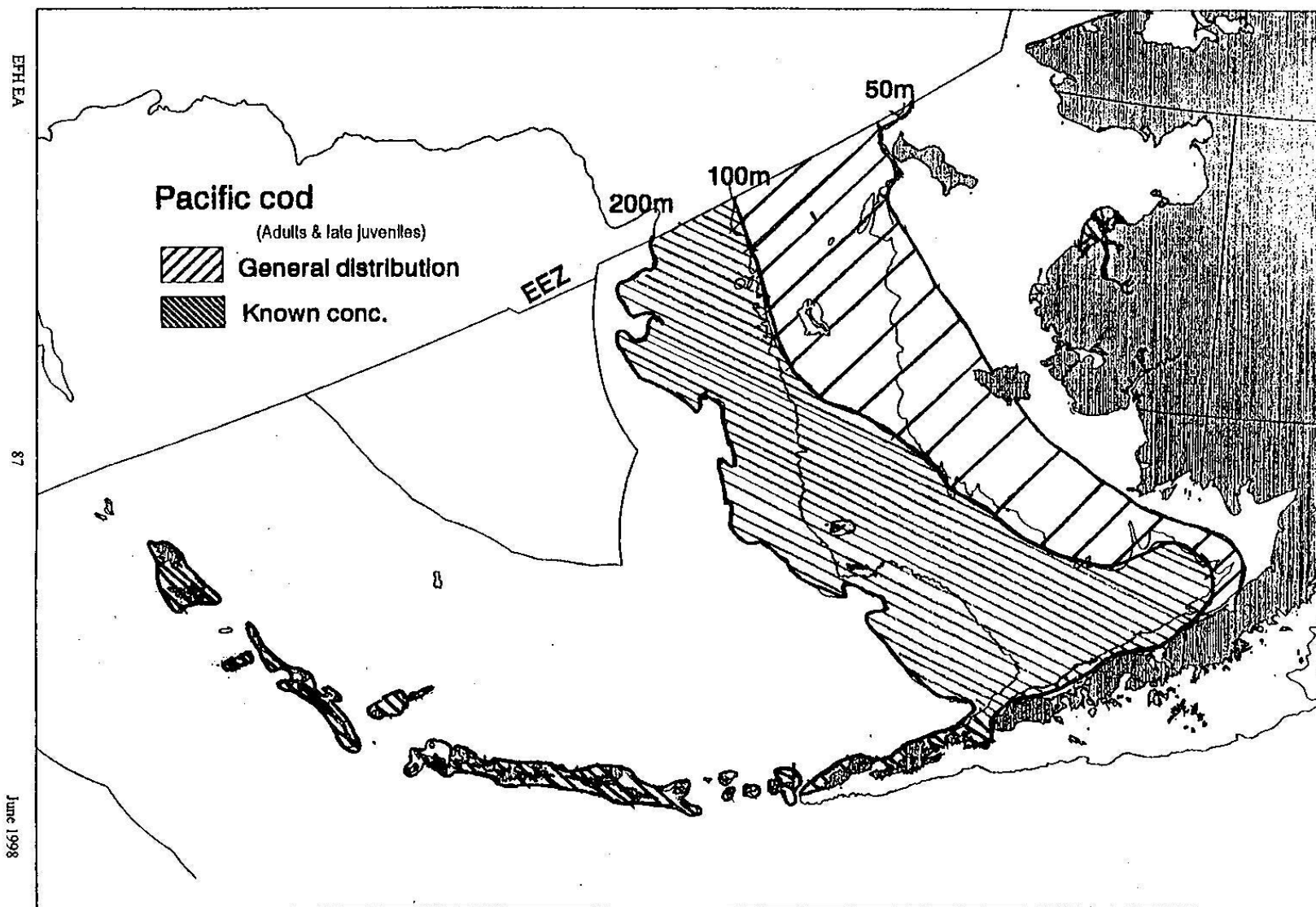


Figure 2-5. Alternative 2: Essential Fish Habitat for Golden King Crab Eggs

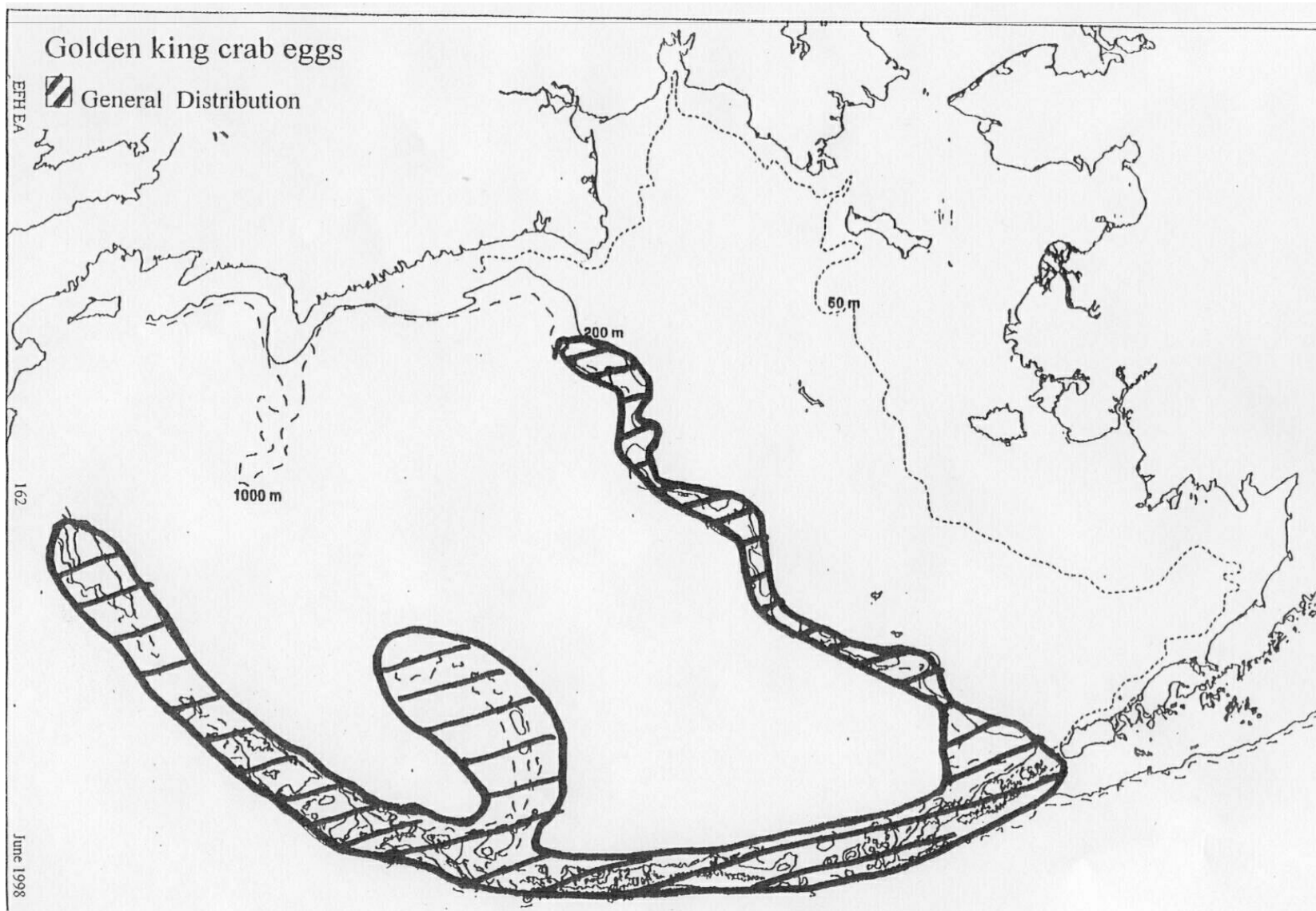


Figure 2-6. Alternative 2: Essential Fish Habitat for Mature and Late Juvenile Golden King Crab

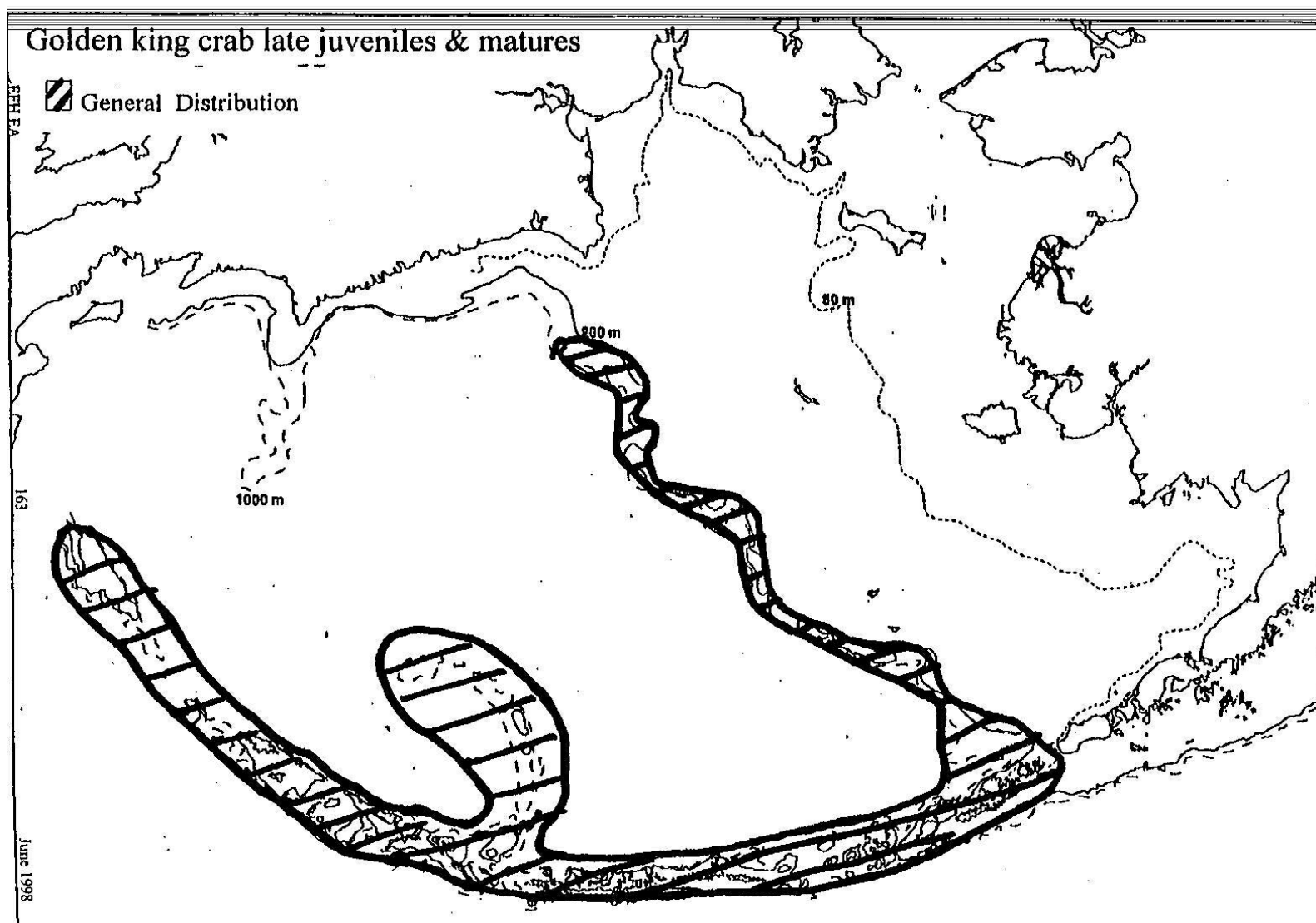


Figure 2-7. Alternative 2: Essential Fish Habitat for GOA Adult and Late Juvenile Weathervane Scallops

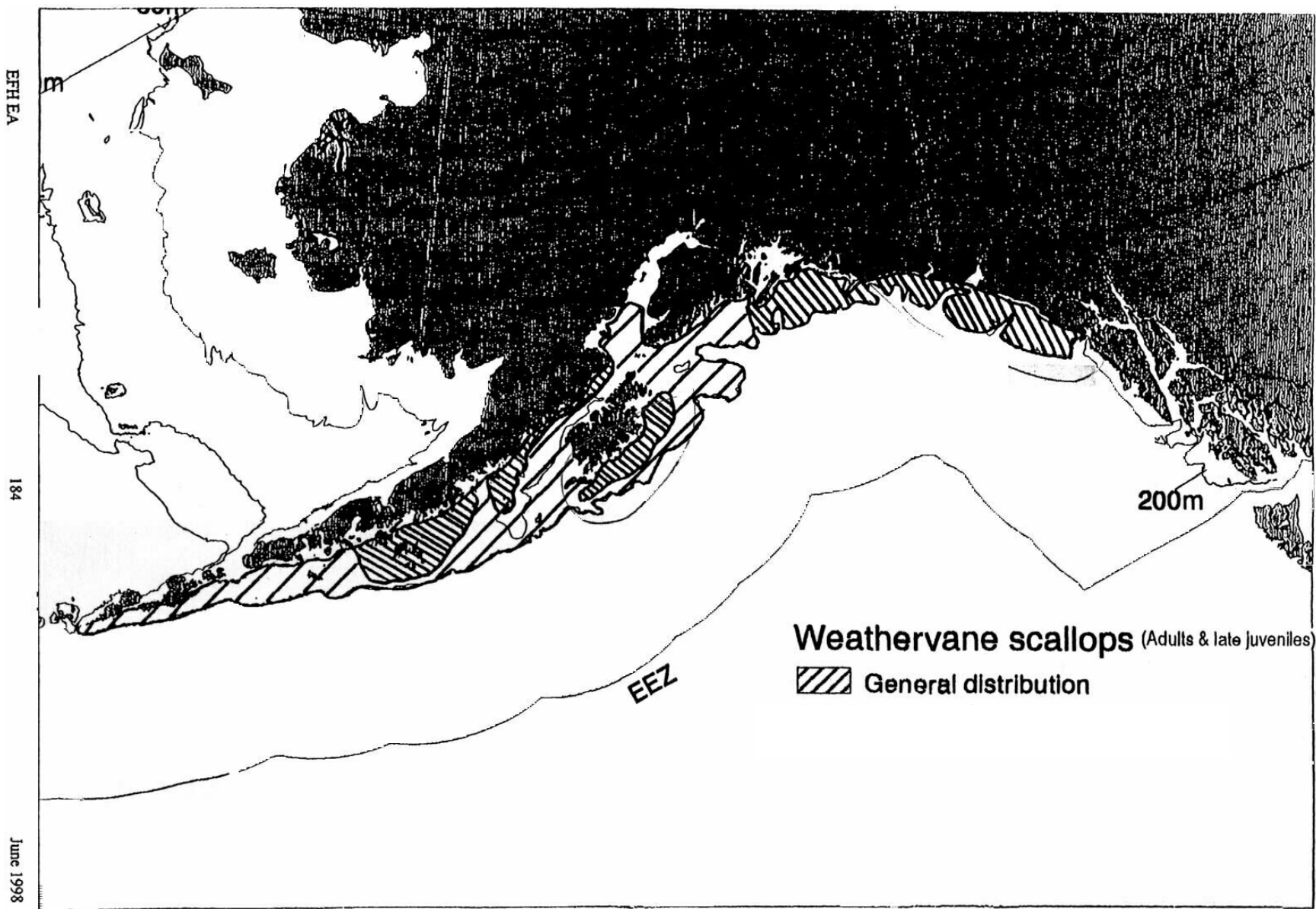


Figure 2-8. Alternative 2: Essential Fish Habitat for BSAI Adult and Late Juvenile Weathervane Scallops

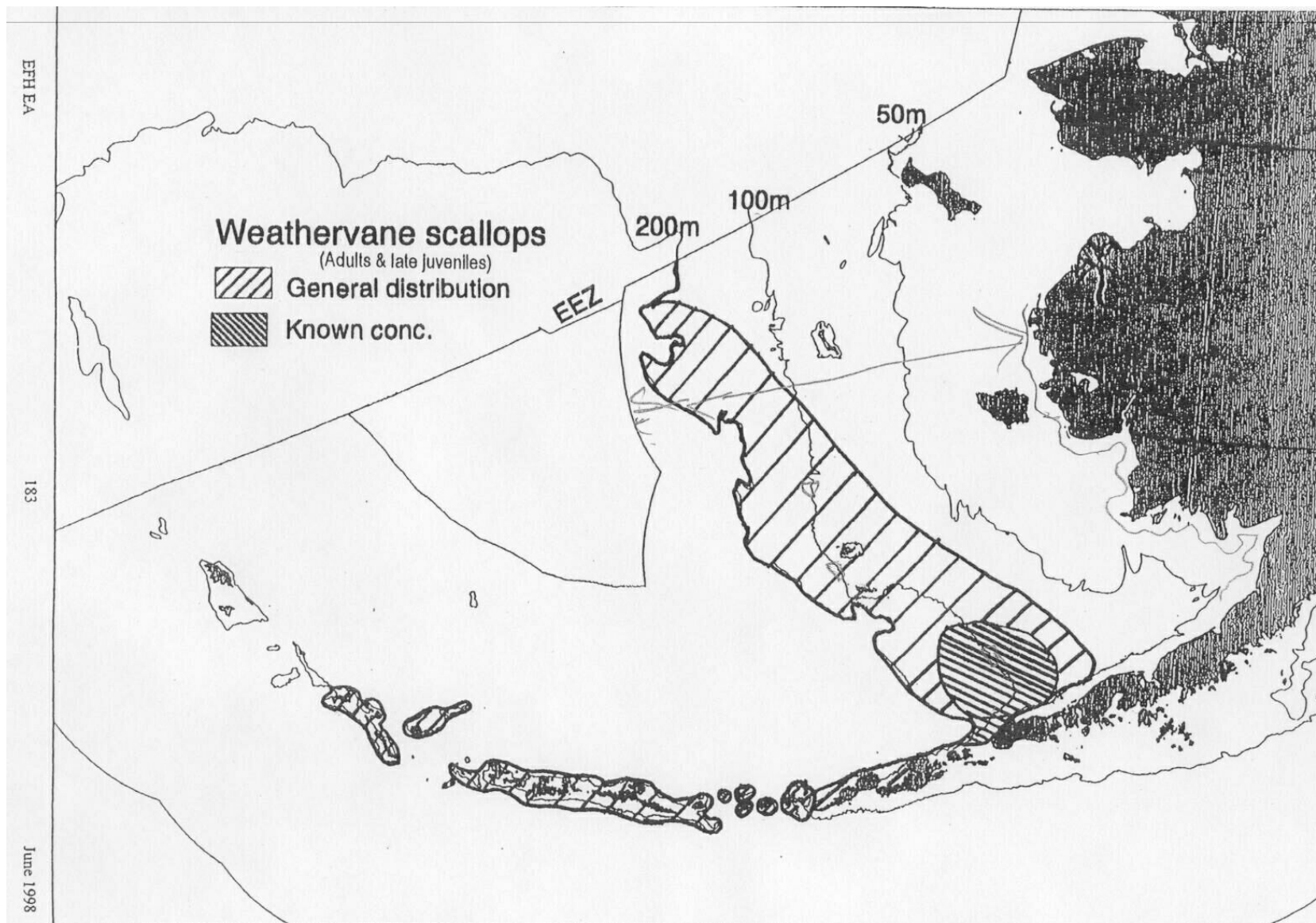
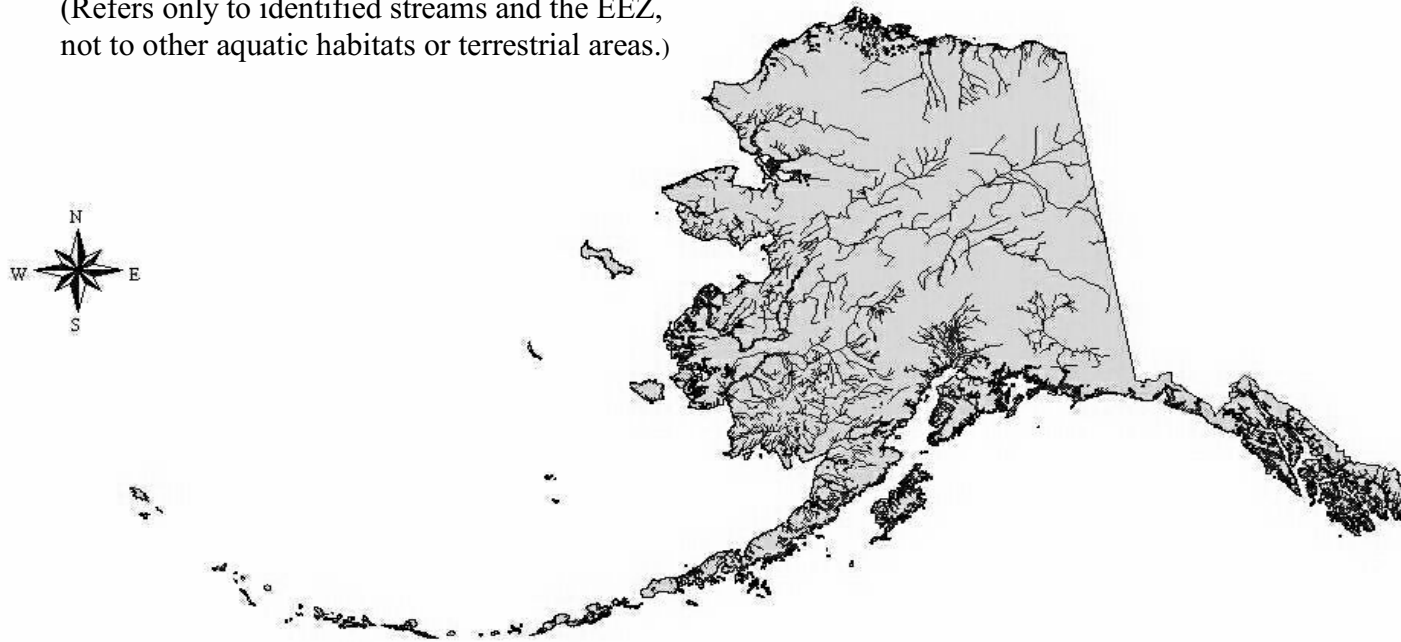


Figure 2-9. Alternative 2: Essential Fish Habitat for Freshwater Salmon in Alaska

**General Distribution of Eggs and Larvae,
Freshwater Juvenile and Adult Chinook, Chum,
Coho, Pink, and Sockeye Salmon**

(Refers only to identified streams and the EEZ,
not to other aquatic habitats or terrestrial areas.)



Source: EFH EA, June 1998

Figure 2-10. Alternative 3: Essential Fish Habitat for GOA Late Juvenile and Adult Pacific Ocean Perch

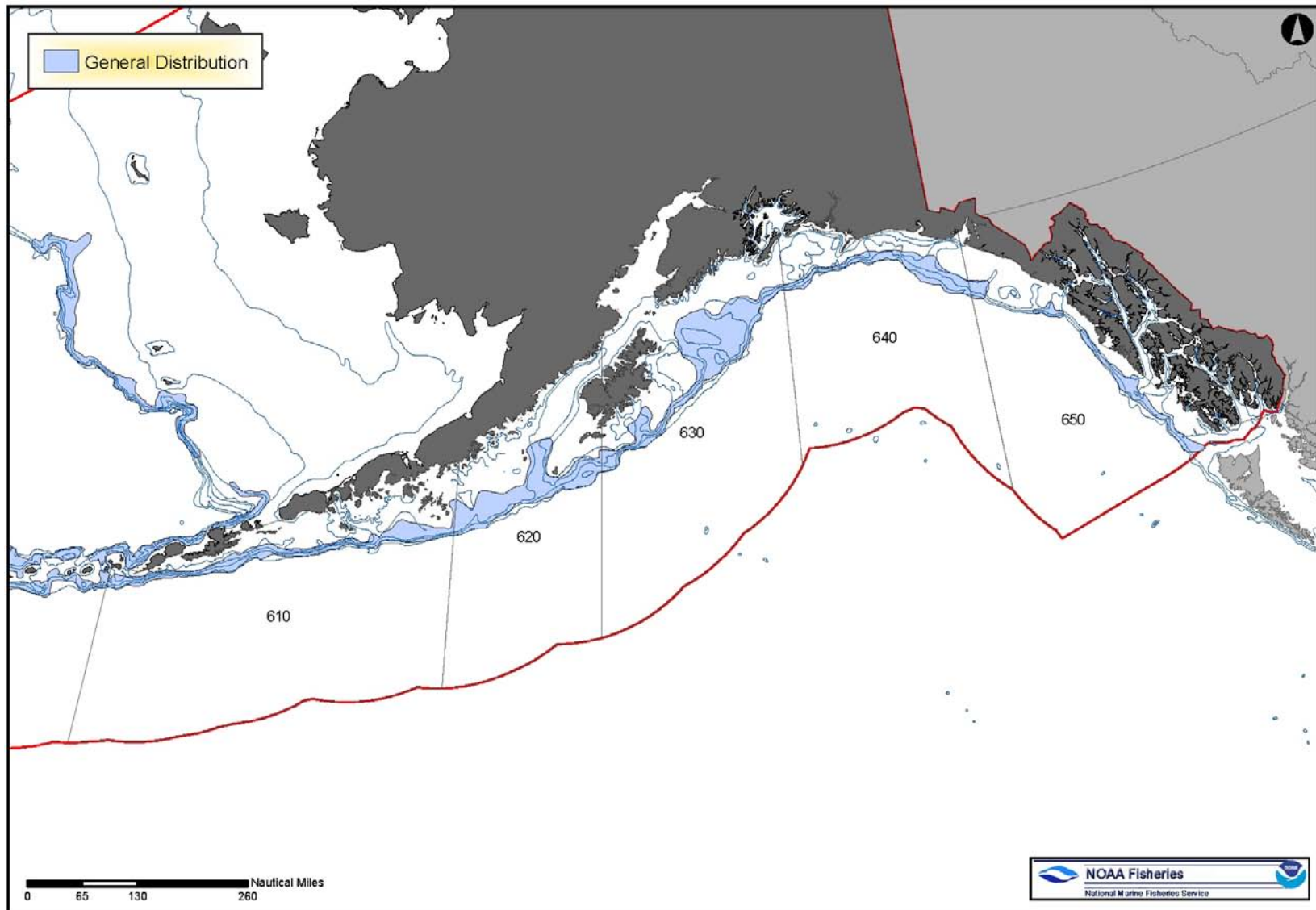


Figure 2-11. Alternative 3: Essential Fish Habitat for BSAI Pacific Cod Larval Presence

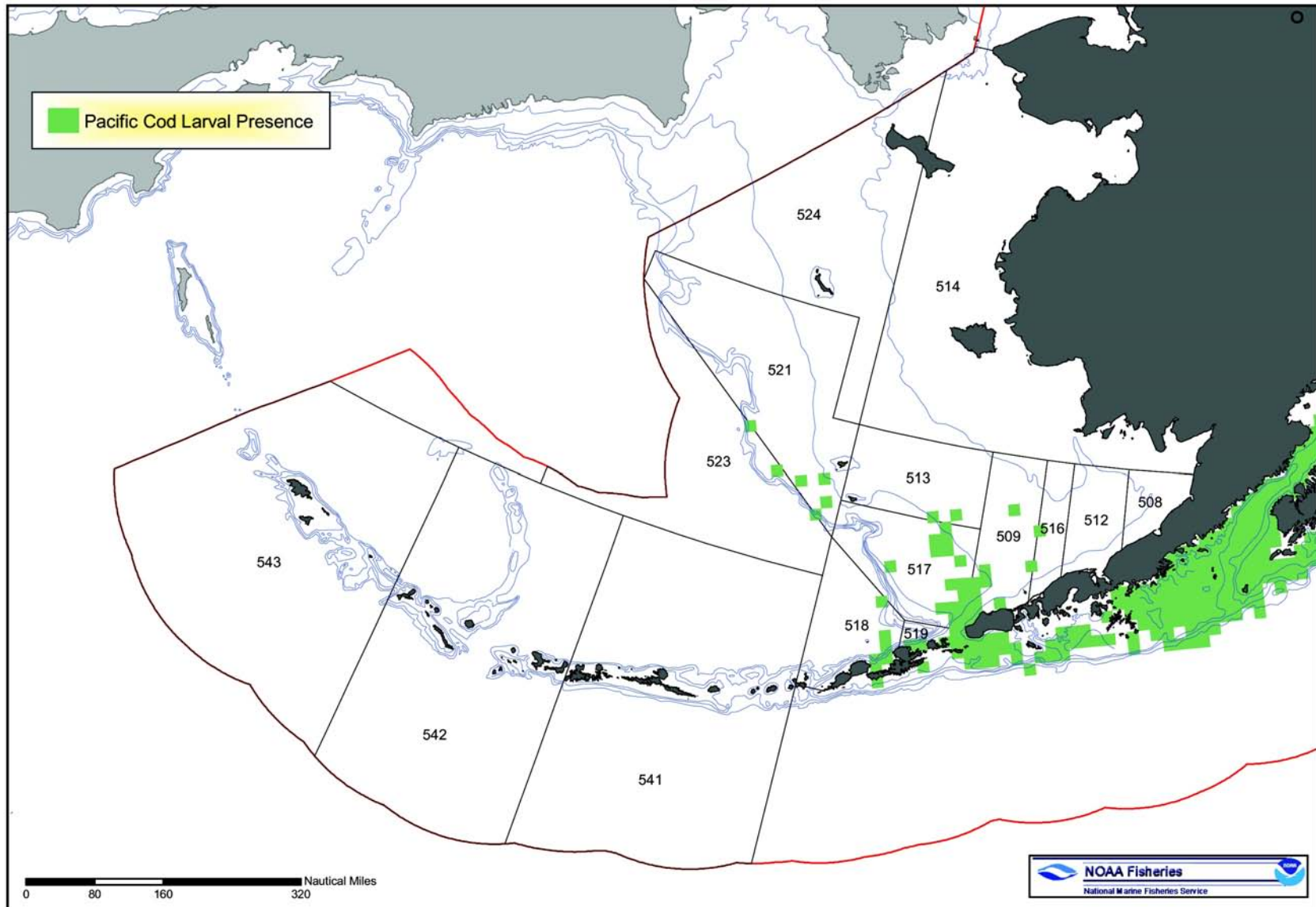


Figure 2-12. Alternative 3: Essential Fish Habitat for BSAI Late Juvenile and Adult Pacific Cod

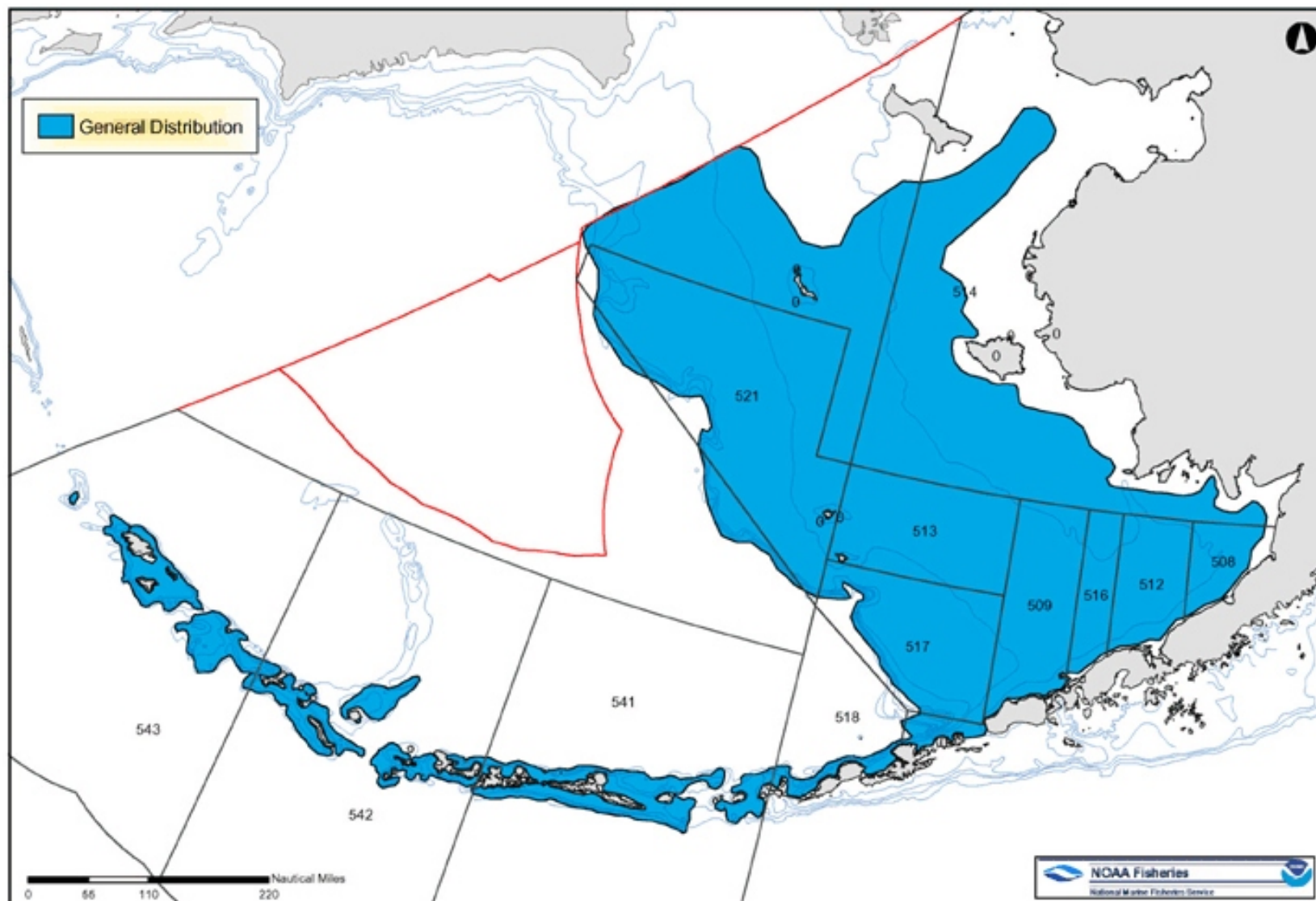


Figure 2-13. Alternative 3: Essential Fish Habitat for BSAI Golden King Crab

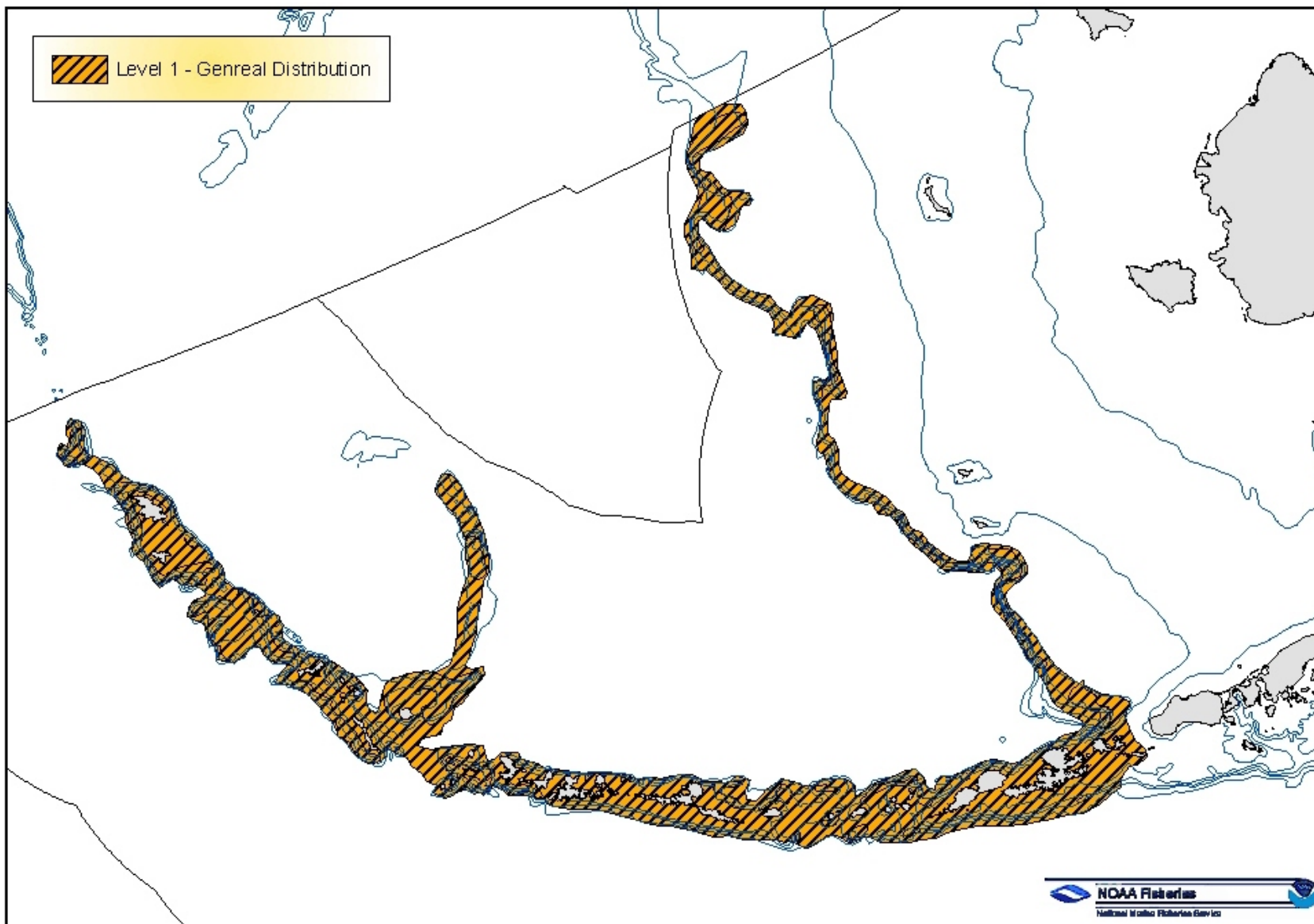


Figure 2-14. Alternative 3: Essential Fish Habitat for Weathervane Scallops

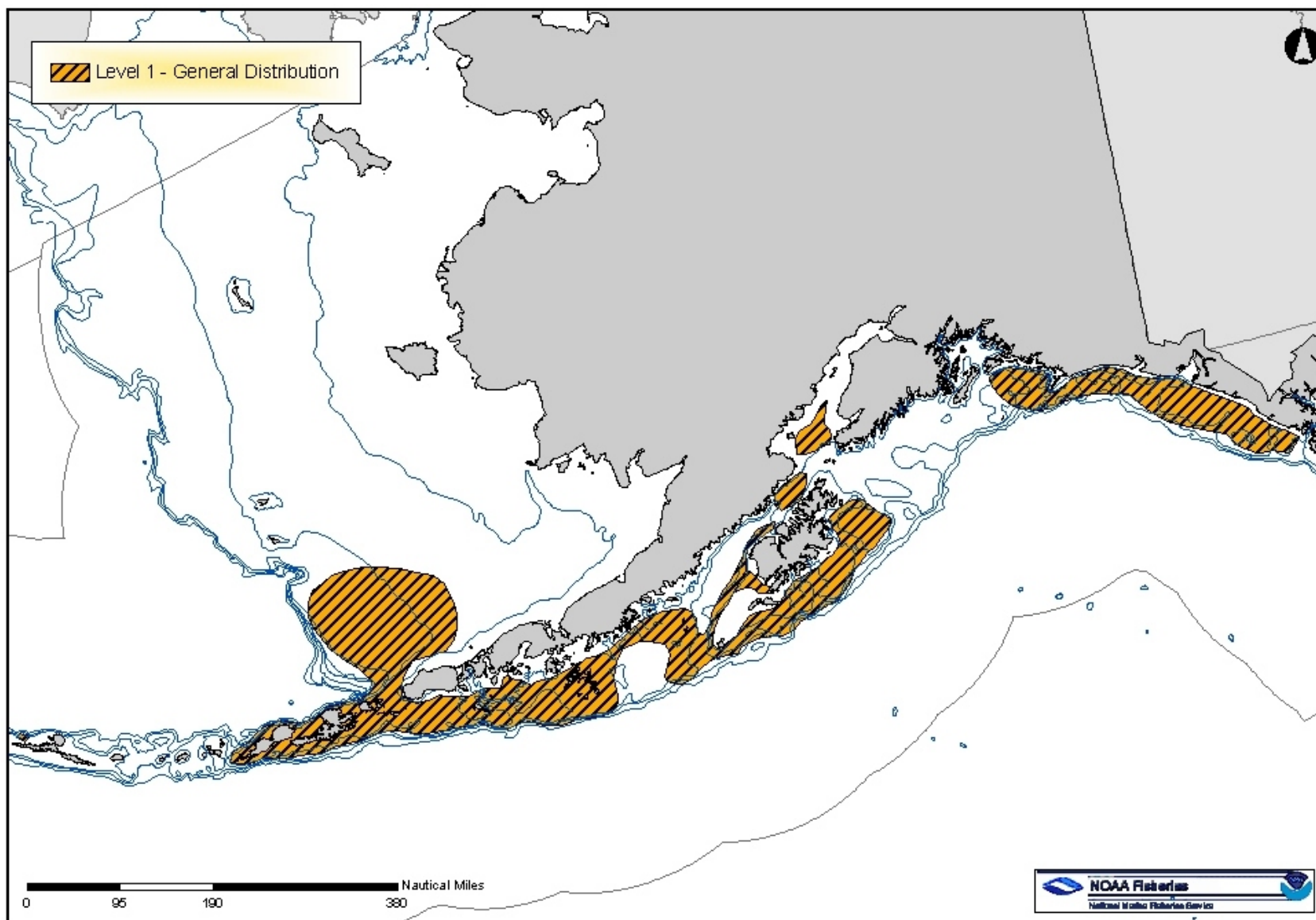


Figure 2-15. Alternative 3: Essential Fish Habitat for Freshwater Chinook Salmon

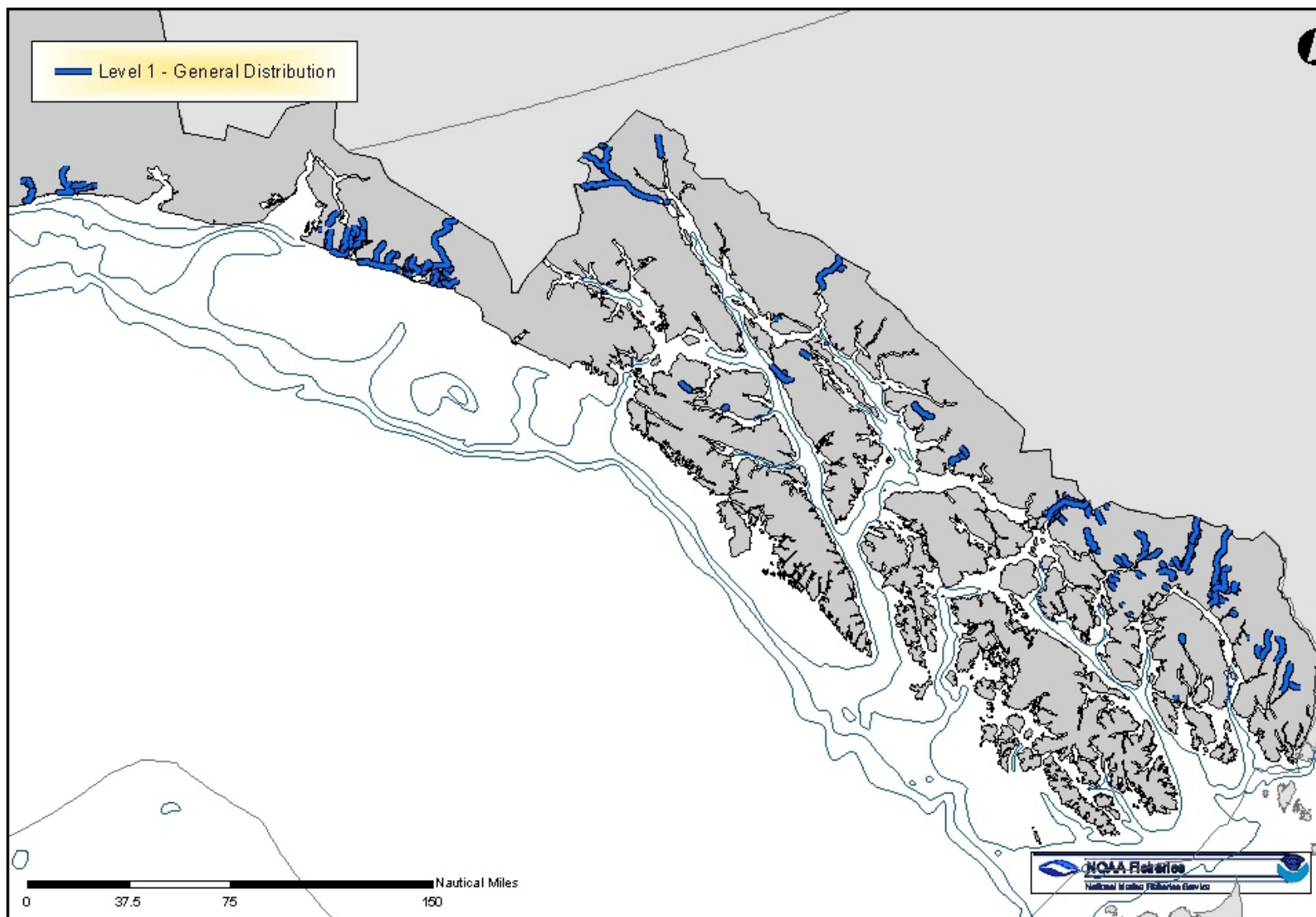


Figure 2-16. Alternative 3: Essential Fish Habitat for Marine Chinook Salmon

