

KILLER WHALE (*Orcinus orca*): Northern Gulf of Mexico Stock

STOCK DEFINITION AND GEOGRAPHIC RANGE

The killer whale is distributed worldwide from tropical to polar regions (Leatherwood and Reeves 1983). Sightings of these animals in the northern Gulf of Mexico occur primarily over the deeper waters off the continental shelf [Southeast Fisheries Science Center (SEFSC) unpublished data]. Killer whales were seen only in the summer during recent seasonal GulfCet aerial surveys of the northern Gulf of Mexico during 1993-1995 (Davis et al., in preparation) and in the late spring during vessel surveys (SEFSC unpublished data). Different stocks have been identified in the northeastern Pacific based on morphological, behavioral, and genetic characteristics (Bigg et al. 1990; Hoelzel 1991). There is no information on stock differentiation for the Atlantic population, although an analysis of vocalizations of killer whales from Iceland and Norway indicated that stocks from these areas may represent different stocks (Moore et al. 1988).

POPULATION SIZE

Estimates of abundance were derived through the application of distance sampling analysis (Buckland et al. 1993) and the computer program DISTANCE (Laake et al. 1993) to sighting data collected during 1991-1994 spring-summer, visual sampling, line-transect vessel surveys of the northern Gulf of Mexico (Hansen et al. 1995), which includes data collected as part of the GulfCet program (Davis et al., in preparation). These surveys were conducted throughout the area from approximately the 200 m isobath along the U.S. coast to the seaward extent of the U.S. Exclusive Economic Zone. The seasonal GulfCet aerial surveys included only a small portion of the stock range and these data were not used for abundance estimation. Estimated killer whale abundance by survey year [coefficient of variation (CV) in parentheses] was zero in 1991, 138 in 1992 (0.96), 641 in 1993 (0.50), and 193 in 1994 (1.12) (Hansen et al. 1995). Survey effort-weighted estimated average abundance of killer whales for all surveys combined was 277 (CV = 0.42) (Hansen et al. 1995).

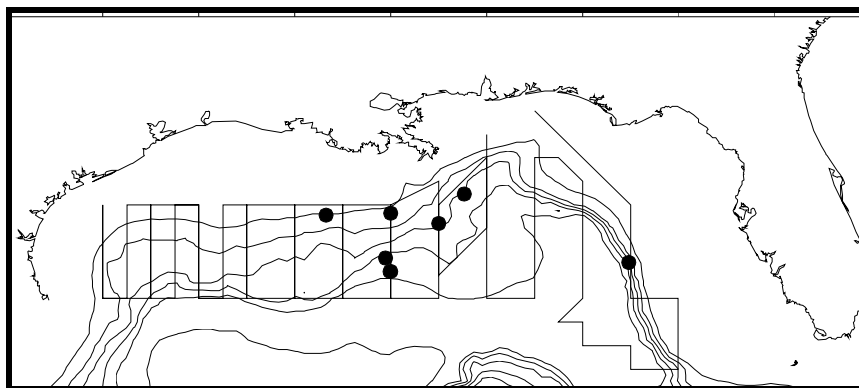


Figure 1. Distribution of killer whale sightings during NOAA Ship Oregon II marine mammal surveys during 1991-1994. The straight lines show transects during two surveys and are examples of typical survey transects. Isobaths are in 183 m (100 fm) intervals.

Minimum Population Estimate

The minimum population size was estimated from the average estimate abundance which was 277 killer whales (CV = 0.42) (Hansen et al. 1995). The minimum population estimate is the lower limit of the two-tailed 60% confidence interval of the log-normal distributed abundance estimate, which is equivalent to the 20th percentile of the log-normal distributed abundance estimate as specified by NMFS (Anon. 1994). The minimum population estimate is 197 killer whales.

Current Population Trend

The abundance estimates were highest during 1993; however, there were no observations of this species during 1991, and the 1992-1994 estimates were not significantly different using the criteria of no overlap of log-normal 95% confidence intervals. The apparent differences in abundance estimates may have been caused by lower sampling effort during 1991, and by low sampling intensity relative to population size (Hansen et al. 1995) or by

inter-annual variation in distribution patterns or spatial sampling patterns, rather than changes in population size. Preliminary analysis of existing photo-identification data shows that some individual whales have been seen during more than one survey (SEFSC unpublished data).

CURRENT AND MAXIMUM NET PRODUCTIVITY RATES

Current and maximum net productivity rates for this stock are not known; therefore, the default maximum net productivity rate of 0.04 (Anon. 1994) was used for purposes of this assessment.

POTENTIAL BIOLOGICAL REMOVAL

Potential biological removal level (PBR) was specified as the product of the minimum population size, one half the maximum net productivity rate, and a recovery factor for endangered, threatened, or depleted stocks, or stocks of unknown status relative to optimum sustainable population (OSP) (Anon. 1994). The recovery factor was set at 0.50 because the status of the stock relative to OSP is unknown. PBR for this stock is 2.0 killer whales.

ANNUAL HUMAN-CAUSED MORTALITY AND SERIOUS INJURY

The level of past or current, direct, human-caused mortality of killer whales in the northern Gulf of Mexico is unknown. Available information indicates there likely is little, if any, fisheries interaction with killer whales in the northern Gulf of Mexico. There have been no logbook reports of fishery-related mortality or serious injury and no fishery-related mortality or serious injury has been observed.

There were no documented strandings of killer whales in the northern Gulf of Mexico during 1987-1994 which were classified as likely caused by fishery interactions or other human-related causes. Stranding data probably underestimate the extent of fishery-related mortality and serious injury because not all of the marine mammals which die or are seriously injured may wash ashore, nor will all of those that do wash ashore necessarily show signs of entanglement or other fishery-interaction. Finally, the level of technical expertise among stranding network personnel varies widely as does the ability to recognize signs of fishery interaction.

The total known fishery-related mortality and serious injury for this stock is less than 10% of the calculated PBR and, therefore, can be considered insignificant and approaching zero mortality and serious injury rate. This determination cannot be made for specific fisheries until the implementing regulations for Section 118 of the MMPA have been reviewed by the public and finalized.

Fisheries Information

Pelagic swordfish, tunas, and billfish are the targets of the longline fishery operating in the U.S. Gulf of Mexico. Total longline effort for the Gulf of Mexico pelagic fishery, including OCS edge, continental slope, and Mexican territorial waters, based on mandatory logbook reporting, was 4,400 sets in 1991, 4,850 sets in 1992, and 3,260 sets in 1993 (Cramer 1994). This fishery has been monitored with about 5% observer coverage, in terms of trips observed, since 1992. There were no reports of mortality or serious injury of killer whales by this fishery.

Pair trawl fishing gear has the potential to capture marine mammals, but there have been no reports of mortality or serious injury to marine mammals in the Gulf of Mexico. This fishery has not been observed by NMFS observers, and there are no other data available as to the extent of this fishery in the Gulf of Mexico. It is assumed that it is very limited in scope and duration.

STATUS OF STOCK

The status of this stock relative to OSP is unknown and there are insufficient data to determine population trends. This species is not listed under the Endangered Species Act. The total level of human-caused mortality and serious injury is unknown, but it is believed to be insignificant relative to PBR; therefore, this is not a strategic stock.

REFERENCES

- Anon. 1994. Report of the PBR (Potential Biological Removal) workshop. June 27-29, 1994. NOAA, NMFS Southwest Fisheries Science Center, La Jolla, California, 13 pp. + Appendices.
- Bigg, M. A., P. F. Olesiuk, G. M. Ellis, J. K. B. Ford and K. C. Balcomb. 1990. Social organization and genealogy of resident killer whales (*Orcinus orca*) in the coastal waters of British Columbia and Washington State. Pages 383-405 in P. S. Hammond, S. A. Mizroch and G. P. Donovan (editors), Individual recognition of cetaceans: Use of photoidentification and other techniques to estimate population parameters, Rep. Int. Whal. Commn., Special Issue 12, Cambridge, 440 pp.
- Buckland, S. T., D. R. Anderson, K. P. Burnham and J. L. Laake. 1993. Distance Sampling: estimating abundance of biological populations. Chapman & Hall, London, 446 pp.
- Cramer, J. 1994. Large pelagic logbook newsletter - 1993. NOAA Tech. Mem. NMFS-SEFSC-352, 19 pp.
- Davis, R., G. Scott, B. Würsig, W. Evans, G. Fargion, L. Hansen, K. Mullin, N. May, T. Leming, B. Mate, J. Norris and T. Jefferson. In preparation. Distribution and abundance of marine mammals in the north-central and western Gulf of Mexico: Final Report. OCS Study #MMS 94-0003. Texas Institute of Oceanography and the National Marine Fisheries Service. U.S. Dept. of the Interior, Minerals Mgmt. Service, Gulf of Mexico OCS Region, New Orleans, Louisiana.
- Hansen, L. J., K. D. Mullin and C. L. Roden. 1995. Estimates of cetacean abundance in the northern Gulf of Mexico from vessel surveys. Southeast Fisheries Science Center, Miami Laboratory, Contribution No. MIA-94/95-25, 9 pp. + tables and figures.
- Hoelzel, A. R. 1991. Analysis of regional mitochondrial DNA variation in the killer whale; implications for conservation. Pages 225-233 in A. R. Hoelzel (editor), Genetic ecology of whales and dolphins, Rep. Int. Whal. Commn. Special Issue 13, Cambridge, 311 pp.
- Laake, J. L., S. T. Buckland, D. R. Anderson, and K. P. Burnham. DISTANCE user's guide, V2.0. Colorado Cooperative Fish & Wildlife Research Unit, Colorado State University, Ft. Collins, Colorado, 72 pp.
- Leatherwood, S. and R. R. Reeves. 1983. The Sierra Club handbook of whales and dolphins. Sierra Club Books, San Francisco, 302 pp.
- Moore, S. E., J. K. Francine, A. E. Bowles and K. B. Ford. 1988. Analysis of calls of killer whales, *Orcinus orca*, from Iceland and Norway. Rit. Fiskideild. 11:225-250.