

# Appendix D Project Map and Typical Cross Section

Appendix D

Figure 1. Project area map with crossings

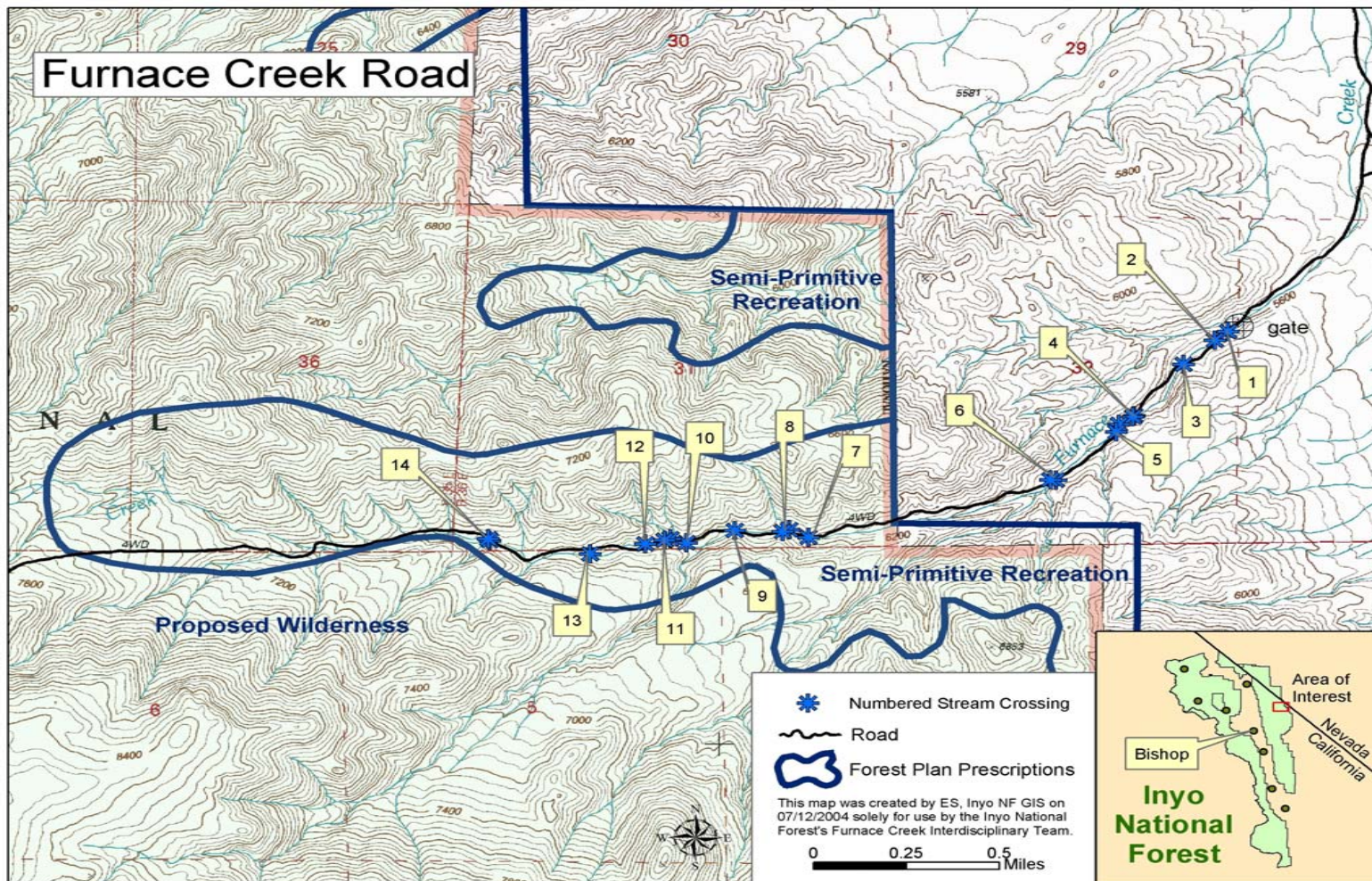
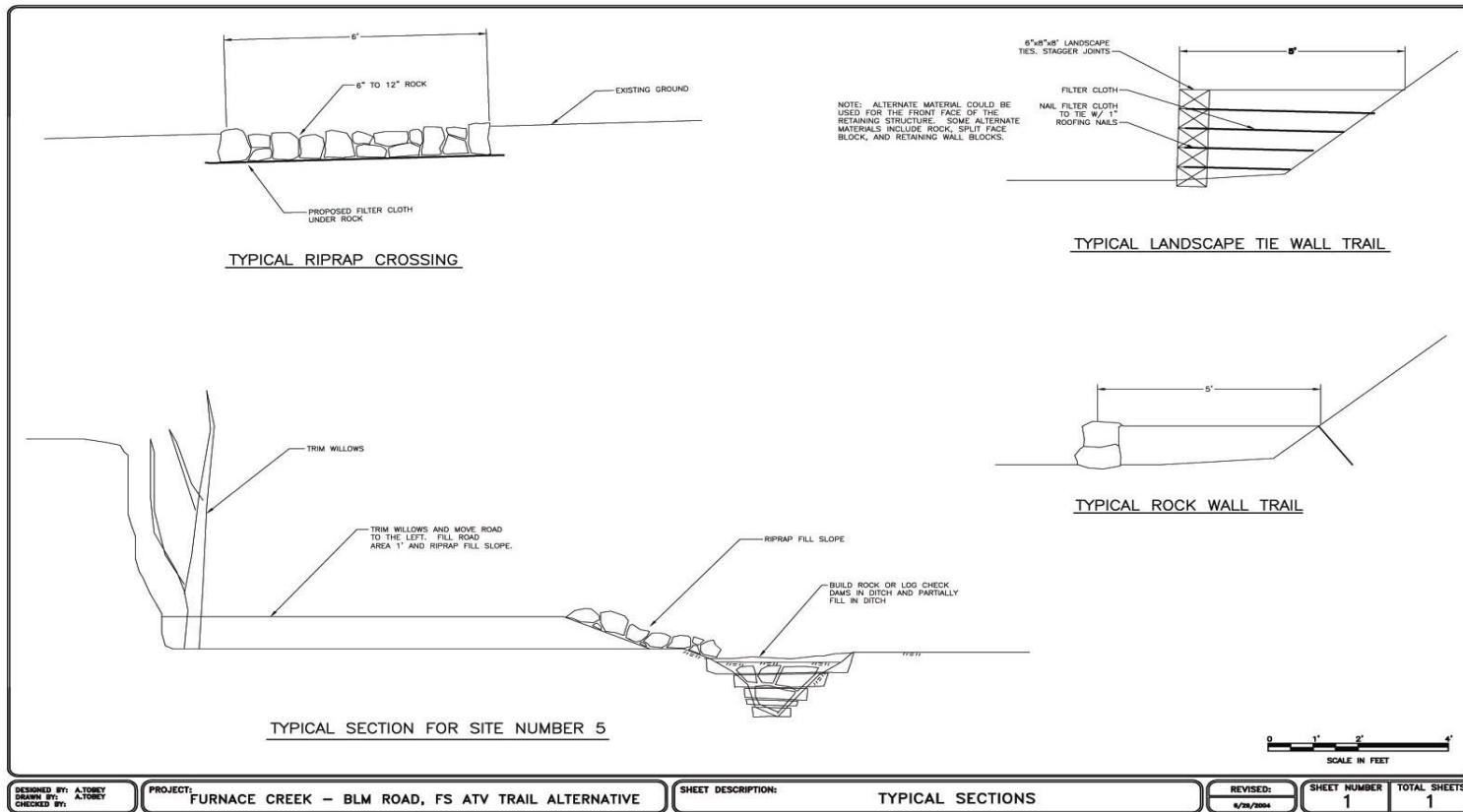


Figure 2. Typical cross section of work proposed in Alternatives 3, 4, 5, and 6



## **Appendix E Descriptions of Crossings**

In 2001 and 2004, BLM and Forest Service resource specialists monitored and evaluated the Furnace Creek Road and surrounding area. As the alternatives for the project were formulated, attention was focused on the areas where the road either crosses the creek or is in the same channel. Eventually, 14 areas of concern were identified and the alternatives were designed to address the problems at the crossings. The photographs were taken in July 2004, with the exception of the pre-gate photo of crossing #8 (this photo was taken in fall 2001). Appendix E provides photographs and descriptions of all 14 crossings.

## Crossing 1 - 140 feet from BLM Gate Elevation 5600'



### Comments

Crossing is 5' across

Dry crossing

Stream channel condition same above and below crossing

No noticeable impacts

No corrective measures proposed

## Crossing 2 - 400 feet from BLM Gate Elevation 5610'



### Comments

Crossing is 10' across

Dry crossing

Stream channel condition same above and below crossing

No noticeable impacts

No corrective measures proposed

## Crossing 3 - .20 mile from BLM Gate Elevation 5650'



### Comments

Crossing is 5' across

Dry crossing

Stream channel condition mostly the same above and below crossing

Headcut above crossing

No corrective measures proposed

## Crossing 4 - .40 mile from BLM Gate Elevation 5750'



### Comments

Crossing is 40' wide

Wet crossing at time picture was taken; dry by August

Some loss/trampling of riparian vegetation

Channel widening/some sediment in channel

Small spring in channel eating into the slope

Some corrective measures are proposed

## Crossing 5 - .45 mile from BLM Gate Elevation 5760'



### Comments

Crossing is 145' long

Wet crossing with road and stream in the same channel; crossing dry by August

Some erosion, large headcut

Loss of riparian vegetation

Road has captured the stream and altered the normal flow of the stream

Stream bed is scoured as a result of the crossing

Some corrective measures are proposed



## Crossing 6 - .70 mile from BLM Gate Elevation 5845'



### Comments

Crossing is 1-2' with approximately 60' of impact

Crossing dry

Minor headcut

Flow regime altered by road

Water ponds during peak runoff

Some corrective measures are proposed

## Crossing 7 - 1.40 miles from BLM Gate Elevation 6180'



### Comments

Crossing is approximately 60' wide

Wet crossing; vegetation loss

Road and stream in same channel

Road is channelizing water flow; interfering with normal flow regime

Evidence of road ruts

Some corrective measures are proposed, including realignment

## Crossing 8 - 1.50 mile from BLM Gate Elevation 6200'



### Comments

Crossing 120' long

Wet crossing; vegetation loss

Road and stream in same channel

Road is channelizing water flow; interfering with normal flow regime

Evidence of road ruts

Some corrective measures are proposed, including realignment

## Crossing 8

\*\*Photograph taken fall 2001, before the interim closure was in place. Ruts that were very obvious in this photo are not so obvious in the photo of Crossing #8 taken in July 2004.



## Crossing 9 - 1.60 miles from BLM Gate Elevation 6260'



### Comments

Crossing is 20' wide

Wet crossing

Evidence of road ruts

Channel looks natural above and below the channel

Some corrective measures are proposed

## Crossing 10 - 1.70 miles from BLM gate Elevation 6320'



### Comments

Crossing is 90' long

Wet crossing; vegetation loss

Road and stream in same channel

Road is channelizing water flow; interfering with normal flow regime

Evidence of road ruts

Some corrective measures are proposed, including realignment

## Crossing 11 - 1.80 mile from BLM Gate Elevation 6385'



### Comments

Crossing is 50' long

Wet crossing

Evidence of road ruts, scouring, and loss of vegetation

Road interfering with normal flow regime

Some corrective measures are proposed, including realignment

## Crossing 12 - 1.90 miles from BLM Gate Elevation 6430'



### Comments

Crossing is 178' long

Wet crossing

Stream/road is in the same channel

Normal stream flow regime is altered

Evidence of road ruts

Some corrective measures are proposed, including realignment



## Crossing 13 - 2.00 mile from BLM Gate Elevation 6460'



### Comments

Crossing is 630' long

Stream/road is in the same channel

Normal stream flow regime is altered

Evidence of road ruts

Some corrective measures are proposed, including realignment

## Crossing 14 - 2.30 mile from BLM Gate Elevation 6665'



### Comments

Crossing is 35' across

Wet crossing

Evidence of road ruts

Some corrective measures are proposed



