

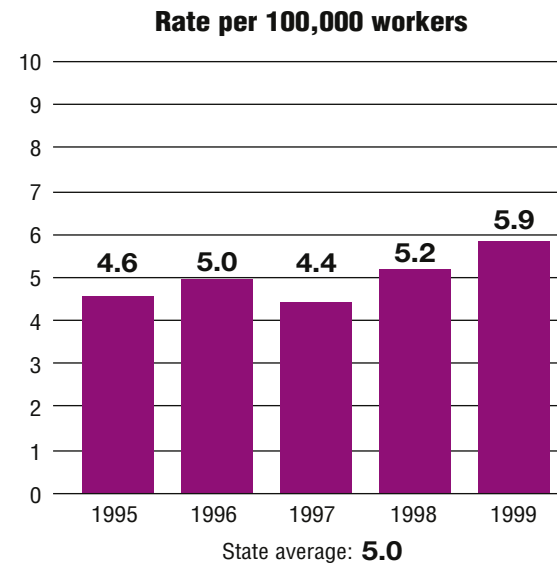
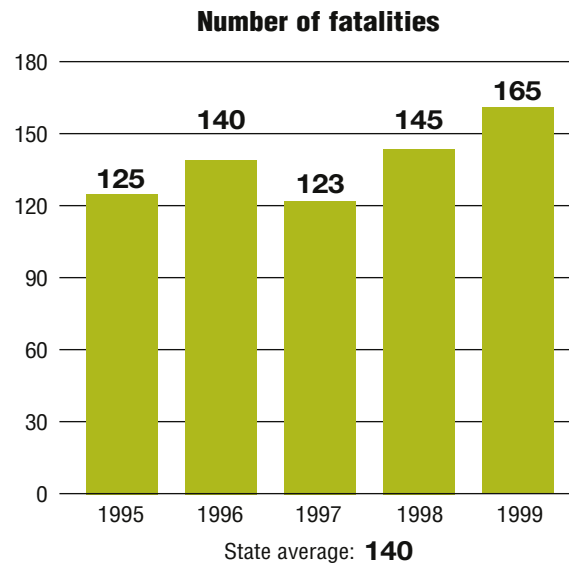
Total fatalities, 1995–99: **698**

Average fatalities per year: **140**

Five-year average fatality rate: **5.0**

Missouri

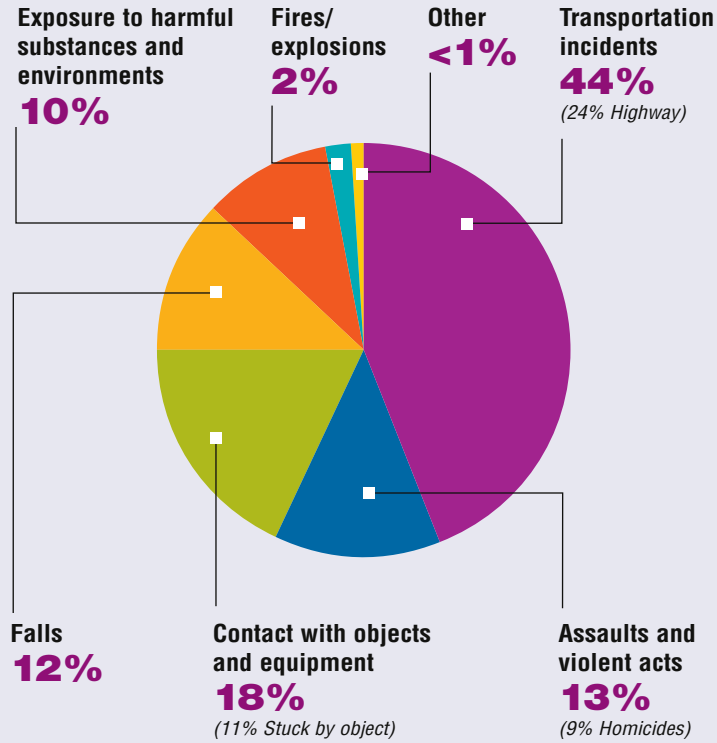
WORK-RELATED FATALITY NUMBERS AND RATES*



EMPLOYEE STATUS		GENDER		AGE		RACE	
Wage/Salary worker	506	Male	642	Under 20	18	White	616
Self-employed	192	Female	56	20 to 34	196	Black/African American	61
				35 to 54	309	Hispanic/Latino	10
				55 and older	175	Other races/Not reported	11

*Please see caveats regarding the calculation of State rates in the State Profiles section introduction page and appendix II.

WORK-RELATED FATALITIES BY EVENT



OCCUPATIONS WITH THE MOST FATALITIES

OCCUPATION	NUMBER (%)
Transportation and material moving occupations	136 (19%)
Farming operators and managers	91 (13%)
Construction trades	75 (11%)
Handlers, equipment cleaners, helpers, and laborers	73 (10%)
Executive, administrative, and managerial	67 (10%)



WORK-RELATED FATALITIES BY MAJOR INDUSTRY

