

Total fatalities, 1995–99: **444**

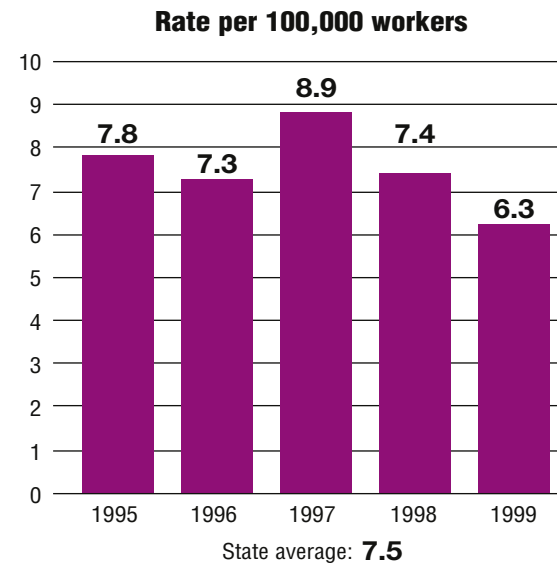
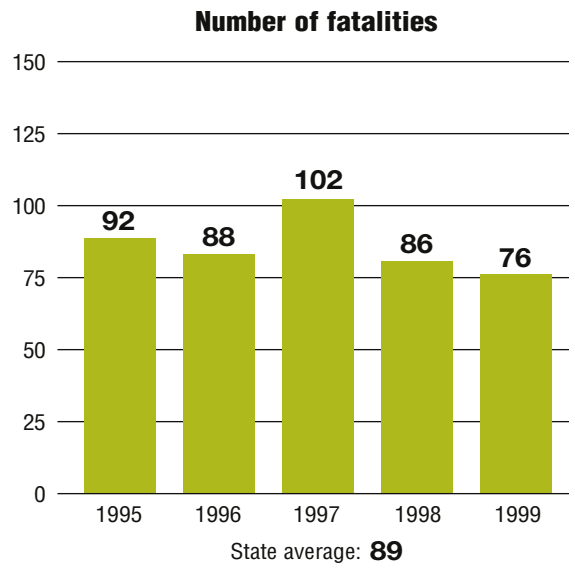
Average fatalities per year: **89**

Five-year average fatality rate: **7.5**



Arkansas

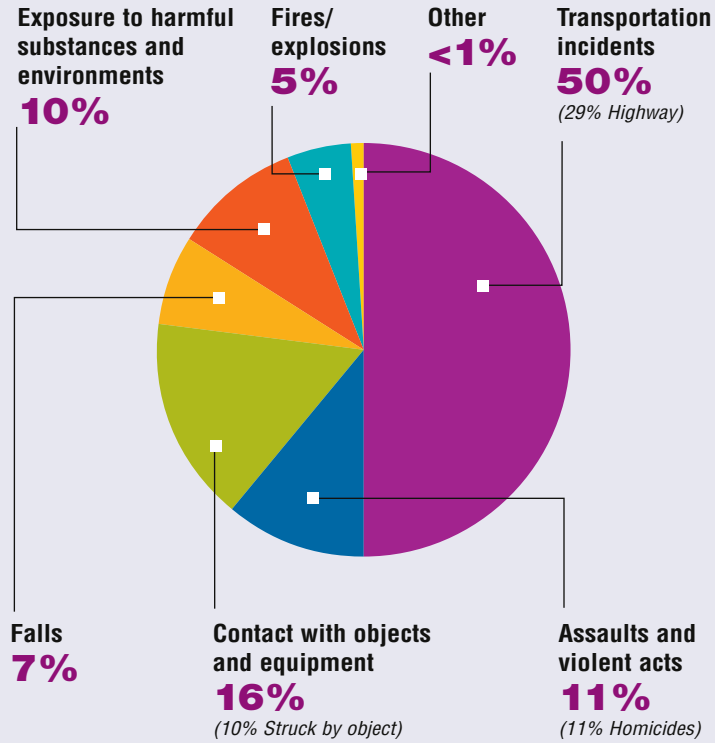
WORK-RELATED FATALITY NUMBERS AND RATES*



EMPLOYEE STATUS		GENDER		AGE		RACE	
Wage/Salary worker	390	Male	404	Under 20	15	White	364
Self-employed	54	Female	40	20 to 34	140	Black/African American	52
				35 to 54	198	Hispanic/Latino	17
				55 and older	89	Other races/Not reported	11

*Please see caveats regarding the calculation of State rates in the State Profiles section introduction page and appendix II.

WORK-RELATED FATALITIES BY EVENT

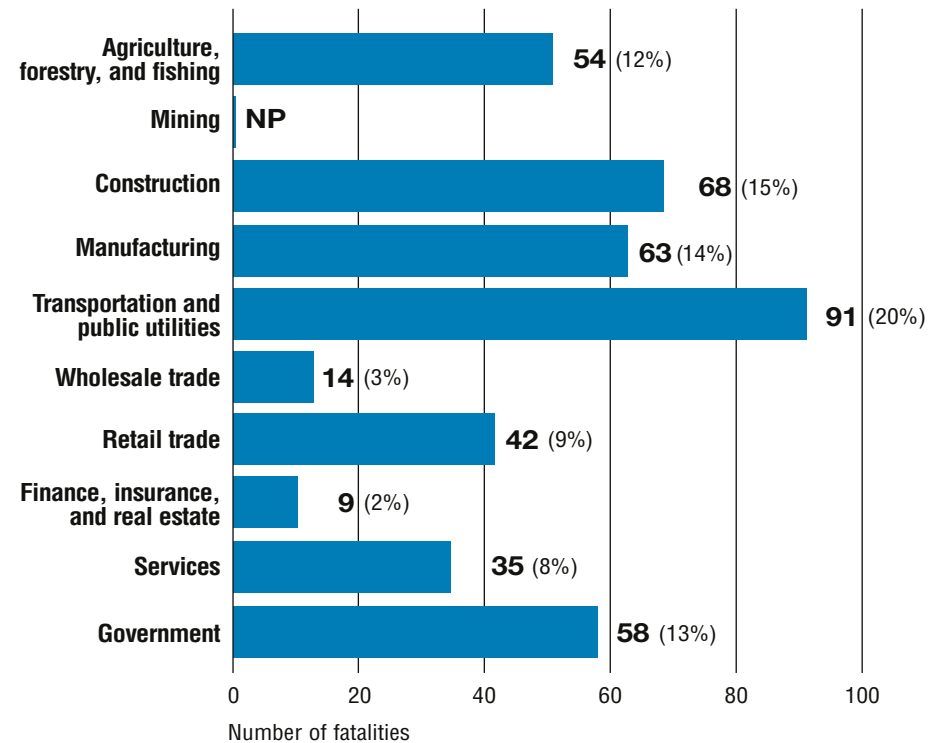


OCCUPATIONS WITH THE MOST FATALITIES

OCCUPATION	NUMBER (%)
Transportation and material moving occupations	119 (27%)
Construction trades	40 (9%)
Sales occupations	32 (7%)
Handlers, equipment cleaners, helpers, and laborers	31 (7%)
Protective service occupations	26 (6%)



WORK-RELATED FATALITIES BY MAJOR INDUSTRY



NP indicates no data reported or data that do not meet publication criteria.