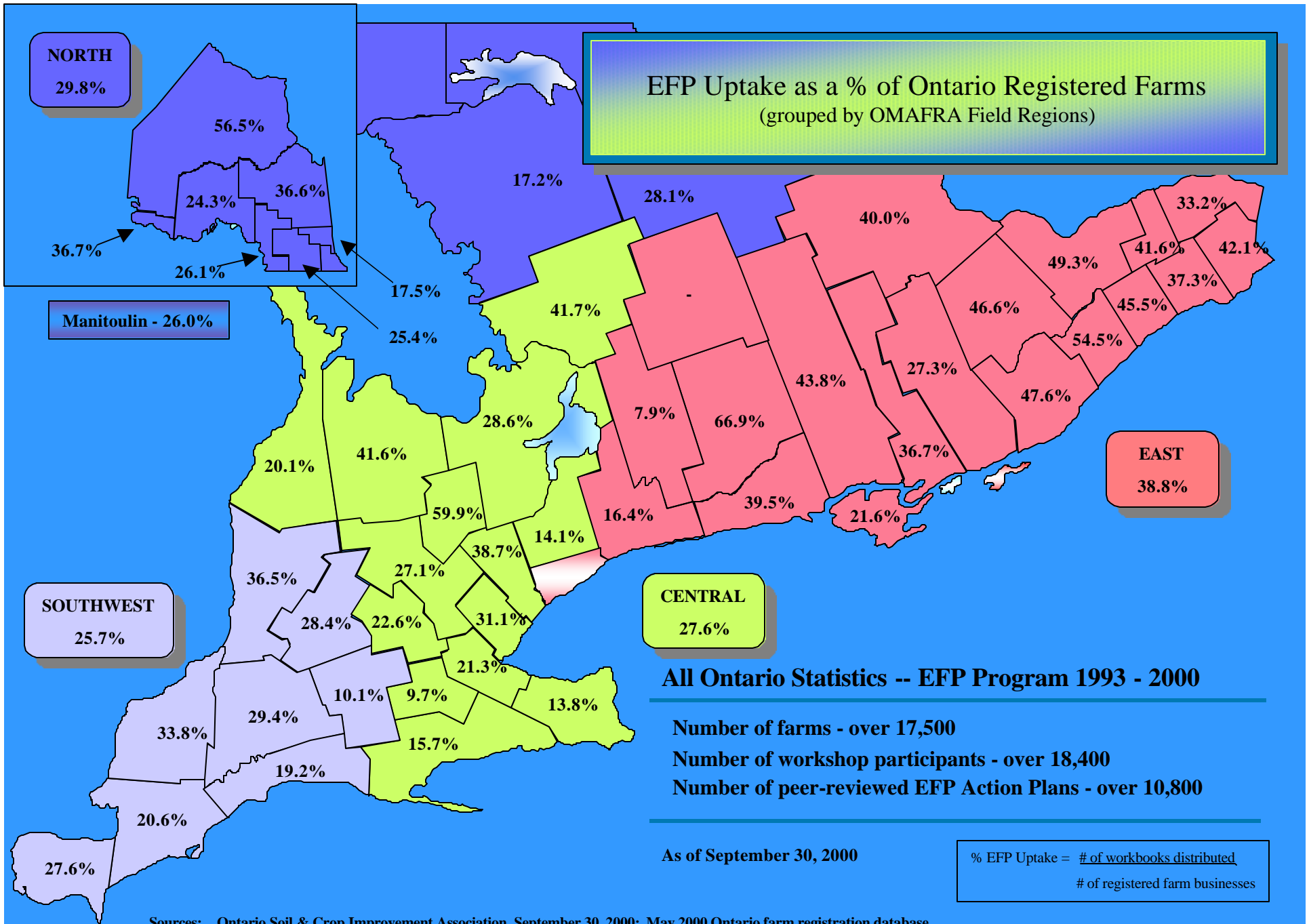


THE ENVIRONMENTAL FARM PLAN



ONTARIO FARM ENVIRONMENT
COALITION

EFP Uptake as a % of Ontario Registered Farms (grouped by OMAFRA Field Regions)



All Ontario Statistics -- EFP Program 1993 - 2000

Number of farms - over 17,500

Number of workshop participants - over 18,400

Number of peer-reviewed EFP Action Plans - over 10,800

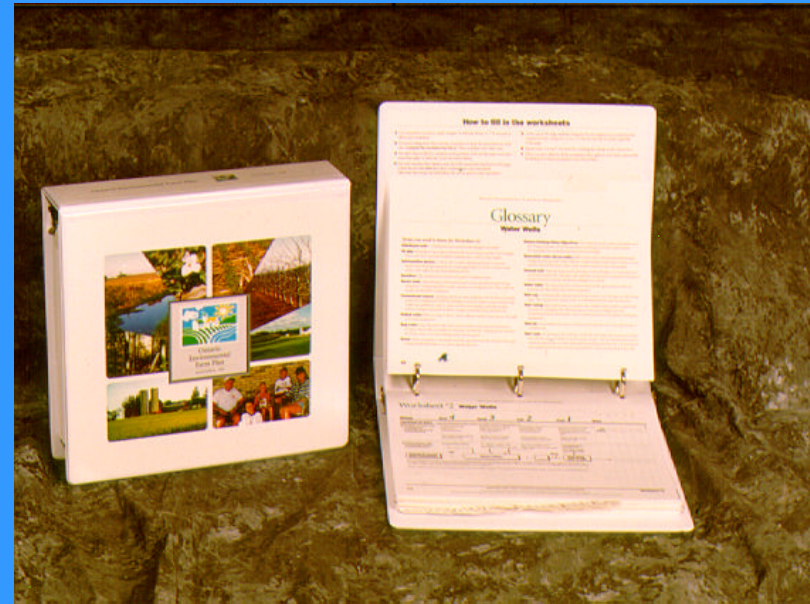
As of September 30, 2000

% EFP Uptake = $\frac{\text{\# of workbooks distributed}}{\text{\# of registered farm businesses}}$

Sources: Ontario Soil & Crop Improvement Association, September 30, 2000; May 2000 Ontario farm registration database

OUR FARM ENVIRONMENT AGENDA

- In 1992, 30 of Ontario's Farm Organizations (OFEC) identified 17 key environmental issues facing Agriculture in Ontario
- The vehicle for responding to these issues was through voluntary stewardship using a farm plan
- The target was to have every farm family in Ontario complete a plan by the year 2000



THE FARM PLAN PROCESS

- **WORKSHOP 1** - TRAINING IN SITE EVALUATION AND ASSESSMENT (awareness, education and capacity building)
- **COMPLETE FARM REVIEW** - IMPLEMENT ASSESSMENT (independent action, building commitment and ownership)
- **WORKSHOP 2** - (Developing practical solutions)
- **COMPLETE ACTION PLAN** - (developing initiative and innovation)
- **PEER REVIEW** - PEER INPUT AND REVISIONS (confirming validity and community support)
- **IMPLEMENTATION** - ACTION, MONITORING EVALUATION AND REVISION (continuous quality improvement)

WHAT HAS BEEN ACHIEVED

- 1,217 workshops
- 17,093 participants
- 10,874 plans peer reviewed
- 7889 projects completed
- between 64 and 104 million dollars spent on environmental improvements (peer reviewed plans)
- between 320,000 and 487,00 hours of farm labour

INNOVATIONS

- BUILDING AWARENESS AND CAPACITY FOR ACTION
- PROACTIVE AND PRECAUTIONARY
- FARMING SYSTEM BASED
- VOLUNTARY AND COMMUNITY SUPPORTED
- PROVISION FOR LOCALLY ADAPTED SOLUTIONS

IMPACTS OF FARM ENVIRONMENT PLANNING

•FARM TYPES COVERED

36 % CASH CROP

15 % DAIRY

14 % MIXED

14 % BEEF

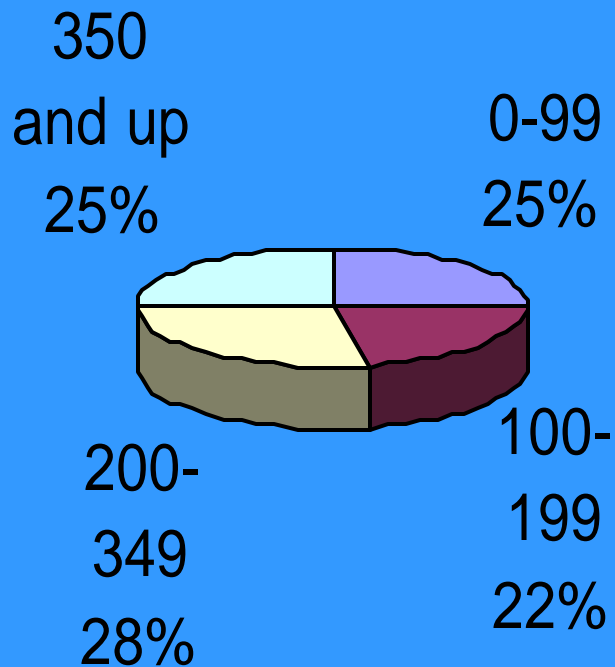
14 % HORTICULTURAL

6 % OTHER ANIMALS

- 2 TO 2.8 MILLION ACRES PEER REVIEWED

- 3.5 TO 4.8 MILLION ACRES ATTENDED WORKSHOPS

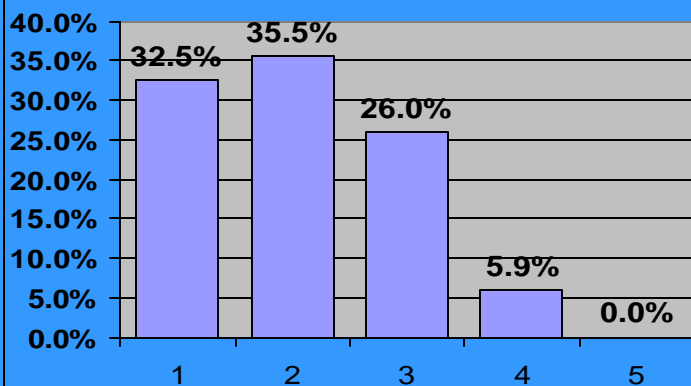
Farm Size (acres)



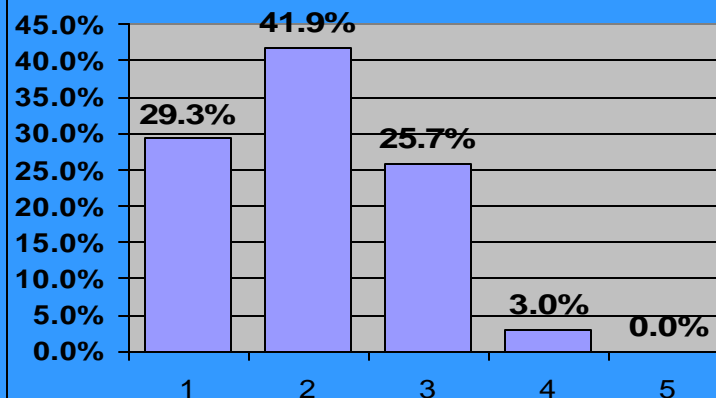
IMPACTS OF FARM PLANNING

FARMERS PERCEPTIONS OF ENVIRONMENTAL IMPROVEMENTS
ACHIEVED THROUGH FARM PLANS
(1 MOST IMPROVED, 5 LEAST IMPROVED)

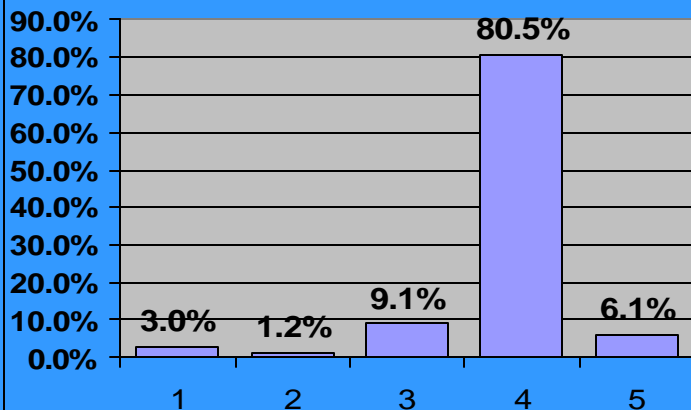
Soil Resources



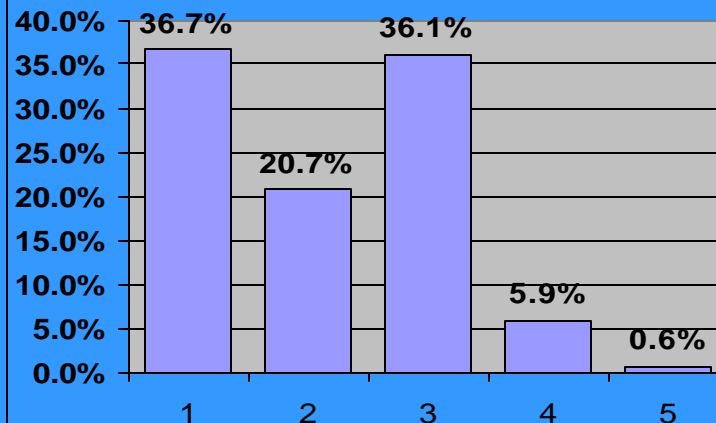
Water Resources



Air Resources



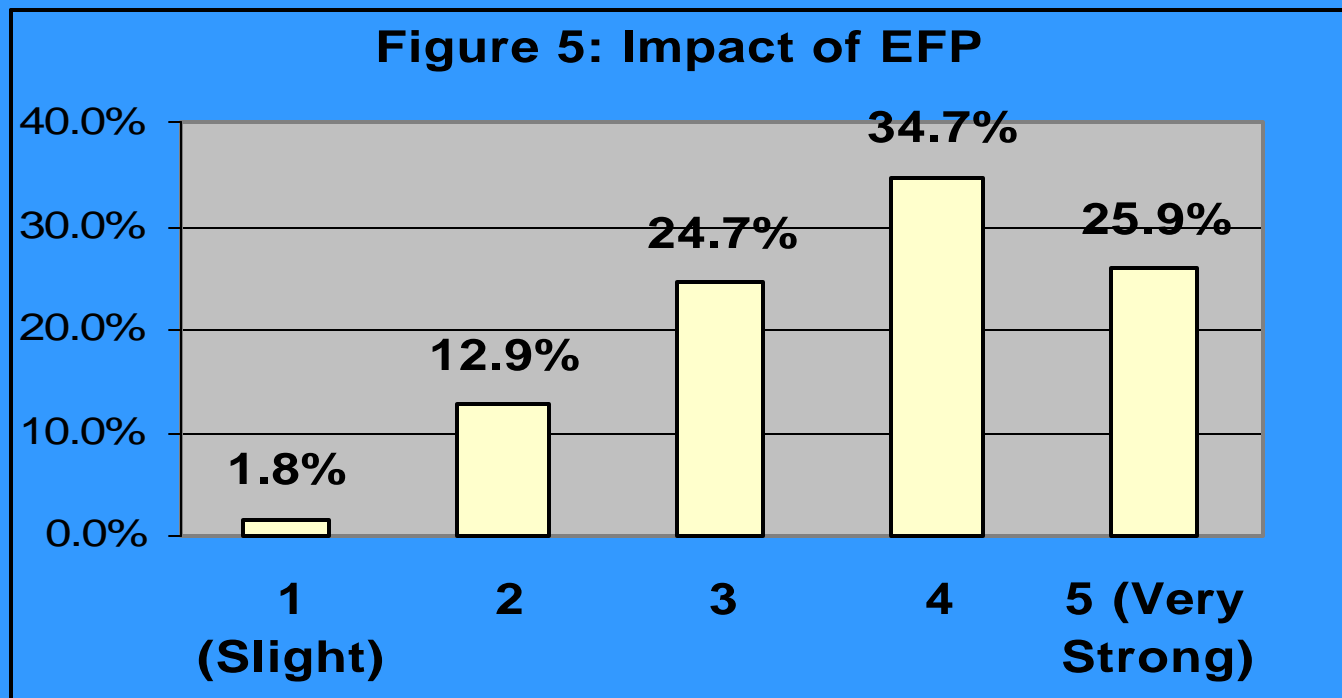
Family Health and Safety



THIRD PARTY ASSESSMENT OF EFP IMPACTS

IN THE OPINION OF THE PROGRAM REVIEWER THE IMPACTS OF FARM PLAN ON THE FARMS WERE ASSESSED.

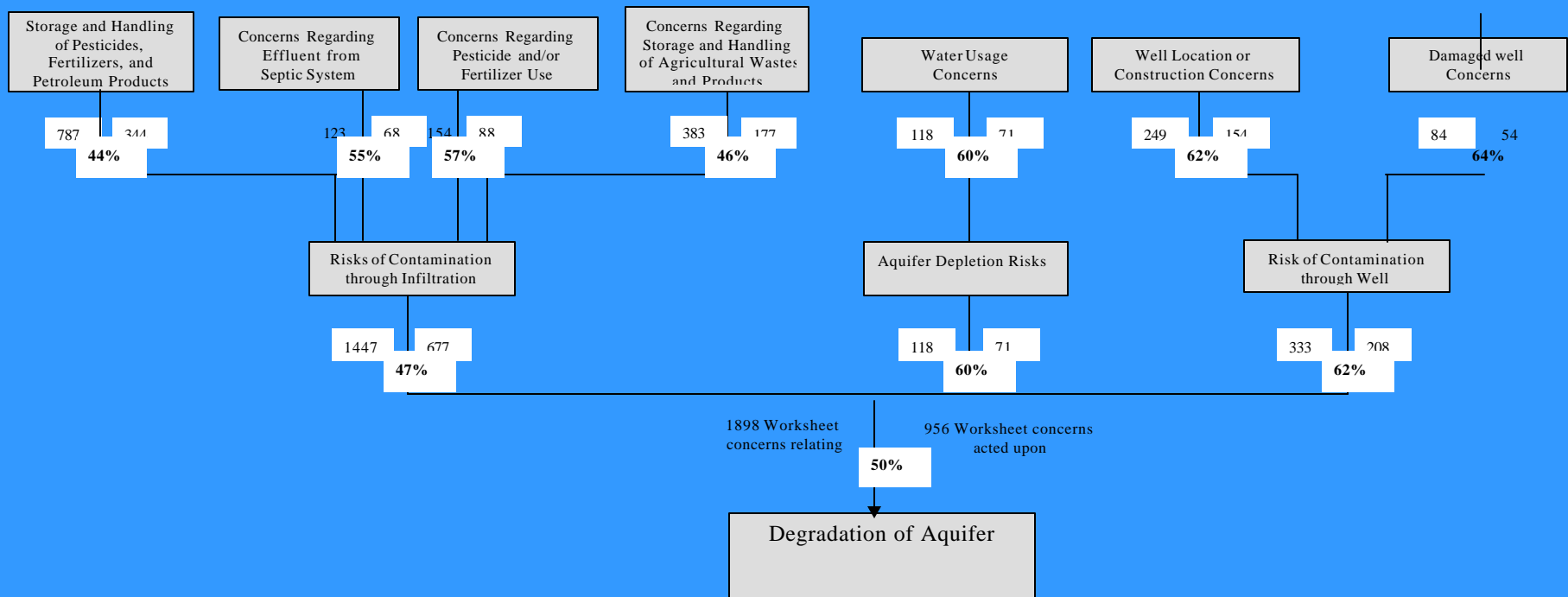
(Rated from 1 slight impact to 5 very strong impact.)



ANALYSIS OF PATHWAYS

MITIGATION OF GROUND WATER DEGRADATION

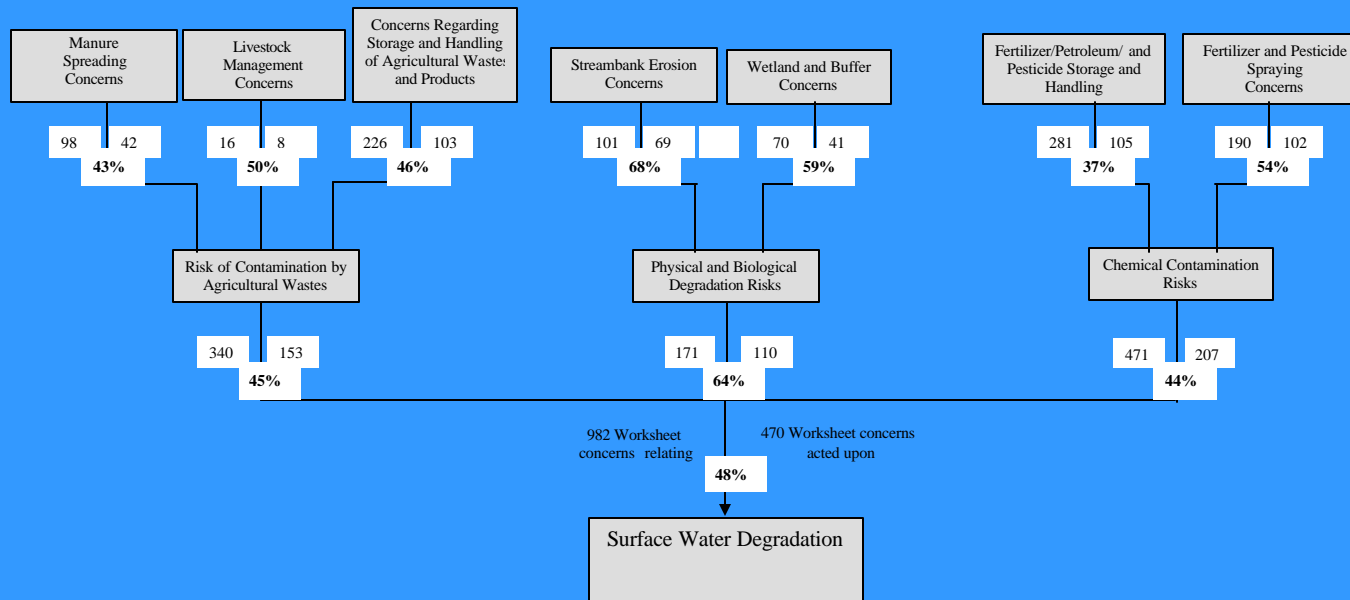
CONTAMINATION PATHWAYS



ANALYSIS OF PATHWAYS

MITIGATION OF SURFACE WATER DEGRADATION

SURFACE WATER CONTAMINATION PATHWAYS



NEW ISSUES

- PROTECTION OF SPECIES
- REDUCTION OF GREENHOUSE GASSES
- CARBON SEQUESTERING
- REGULATION IN SUPPORT OF STEWARDSHIP



NEXT STEPS

- REVISION OF THE WORKBOOK TO MEET NEW CHALLENGES
- UPDATING OF EXISTING FARM PLANS
- IMPROVEMENT OF BEST PRACTICES
- IMPROVED MONITORING AND EVALUATION