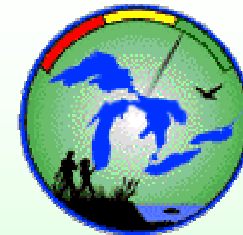



SOLEC History and 10-year Plan



Paul Horvatin

US EPA

Great Lakes National Program Office



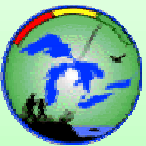
Overall Purpose of the Great Lakes Water Quality Agreement

"...to restore and maintain
the chemical, physical, and biological
integrity of the waters of the
Great Lakes Basin Ecosystem."

SOLEC Objectives

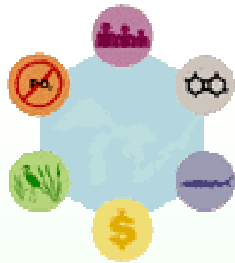


- Assess the state of the Great Lakes ecosystem based on accepted indicators
- Strengthen decision making and management
- Inform local decision makers of Great Lakes environmental issues
- Provide forum for communication and networking among all stakeholders



SOLEC Themes

1994



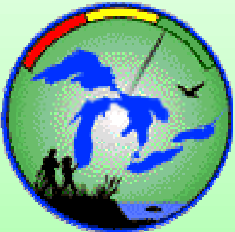
State of the Great Lakes

1996



The Nearshore Environment
and Land Use

1998



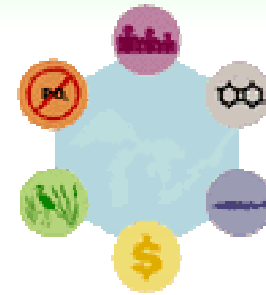
Great Lakes Indicators
& Biodiversity Investment Areas

2000



Implementing Indicator Reporting
(Human Health Focus)

SOLEC '94



Aquatic Ecosystem Health
Human Health
Aquatic Habitat and Wetlands
Nutrients
Contaminants
Socio-economic Stresses

SOLEC Products

- 6 Background papers
- 1 State of the Lakes Report (1995)
- 1 Report on Highlights

SOLEC '96



5
Background
papers



Nearshore Waters
Coastal Wetlands
Nearshore Terrestrial
Land Use
Information Management

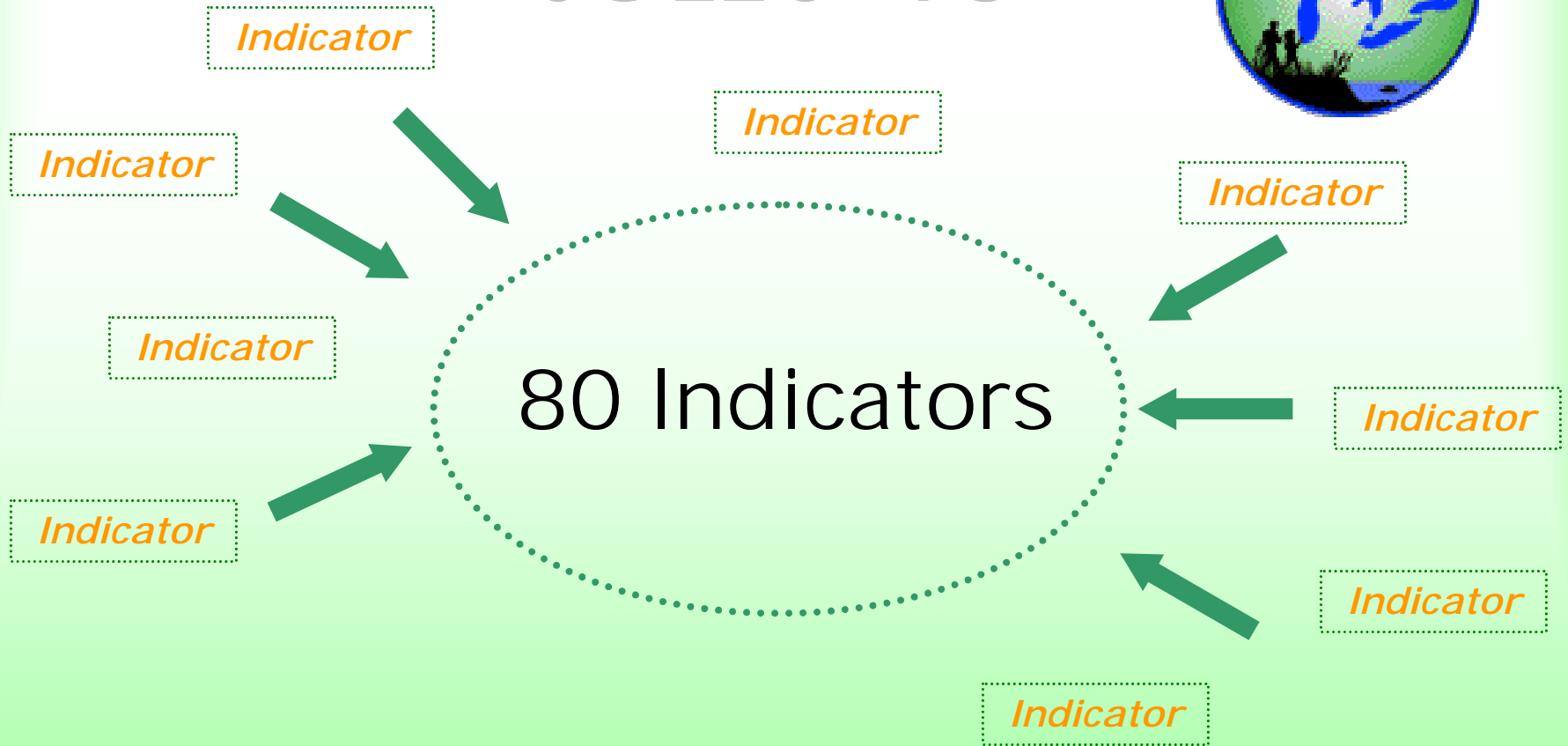


BIA
concepts

**SOLEC
Products**

- 1 State of the Lakes Report (1997)
- 1 Report on Highlights

SOLEC '98



**SOLEC
Products** { SOLEC Indicators

SOLEC '98



Biodiversity
Investment
Areas



Nearshore Waters
Coastal Wetlands
Nearshore Terrestrial

SOLEC Products

SOLEC Indicators

3 Biodiversity Investment Areas Papers

1 Great Lakes Indicators Database

1 Great Lakes Indicators Selection Report

1 State of the Lakes Report (1999)

SOLEC 2000



SOLEC Indicators

Human Health Focus

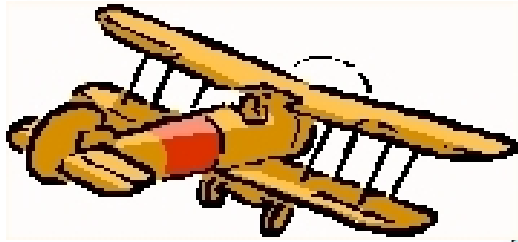
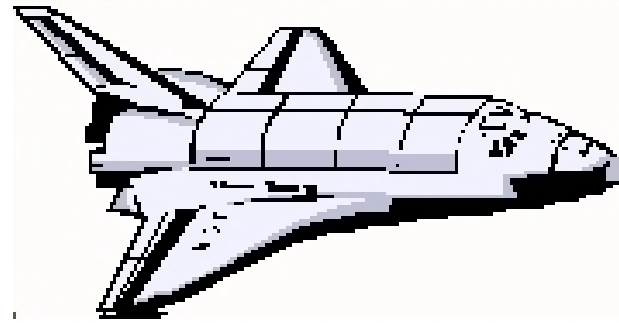
Putting Indicators to Use
Lake Ecosystem Status
BIA Integration

Future
SOLEC
Products

Indicators Report

Biodiversity Investment Area Integration

Paper: State of the Great Lakes 2001




A Matter
of Scale



SOLEC in the FUTURE...

<i>2001</i>	<i>Scoping Workshops</i>
2002	SOLEC: Biological Integrity
<i>2003</i>	<i>Scoping Workshops</i>
2004	SOLEC: Chemical Integrity
<i>2005</i>	<i>Scoping Workshops</i>
2006	SOLEC: Physical Integrity
<i>2007</i>	<i>Scoping Workshops</i>
2008	SOLEC: Theme to be determined

A scenic view of a lake with birch trees in the foreground and mountains in the distance. The trees are in the right foreground, their white bark and green leaves framing the view. The lake is calm, reflecting the light. In the background, there are rolling hills or mountains under a clear sky.

S O L E C

State Of the Lakes Ecosystem Conference