

Activities & OPPORTUNITIES

December Events February Events

1 Pee Posh Project children's exhibit
An exhibition of traditional art from Native American children of the Gila River will be on display through March 15 at the Tempe Public Library, 2nd floor gallery, 3500 S. Rural Road.

1 Reflections of Tempe Beach
Learn more about the renovated park's 80-year history at the Tempe City Hall Gallery, 31 E. 5th St., 1st floor, through March 14.



1 Post Office Exhibition
Local artists Pamela Wood, Eric Burris and Geoffery Gildner display their artwork through Jan. 7 in the front windows of the U.S. Post Office at 500 S. Mill Ave.

1-29 MARS Artspace: Mexican/American Print Series Lithographs
This group of prints by numerous Mexican/American/Chicano artists is on display at the Edna Vihel Center for the Arts, 3340 S. Rural Road.

4 Gingerbread Fantasia
Children of all ages are invited to enjoy the display of gingerbread houses, talk to Santa, decorate cookies, participate in "make-n-take" art activities and more from 1 to 4 p.m. at the Tempe Historical Museum, 809 E. Southern Ave.



1 Pee Posh children's exhibit
An exhibition of traditional arts from Native American children of the Gila River will be on display through March 15 at the Tempe Public Library, 2nd floor gallery, 3500 S. Rural Road.

1 Reflections of Tempe Beach
Learn more about the park's 80-year history at the Tempe City Hall Gallery, 31 E. 5th Street, 1st floor.

1 Ceramic Sampler
Juried show on display in the front windows of the U.S. Post Office at 500 S. Mill Ave., through April 8.

1-18 Arizona Print Group
Featuring unique, limited edition hand-pulled prints. Intaglio, relief, lithograph, monotype and silkscreen works reflect a variety of creative personalities



through Feb. 18 at the Tempe Public Library, Lower Level Gallery, 3500 S. Rural Road.

18 ASU to YOU: Coffee, Conversation & the Arts
Arizona State University Professor Naomi

Jackson, Dance Department will moderate a discussion on the PBS film series, *The Creative Spirit: Creating Community - Meaningful Connections* from 6:30 to 8:30 p.m. at the TLC Classroom, Tempe Public Library, 3500 S. Rural Road.

6 Arizona Print Group
This exhibition features unique, limited edition hand-pulled prints. Intaglio, relief, lithograph, monotype and silkscreen works reflect a variety of creative personalities. The exhibition is open through Feb. 18 at the Tempe Public Library, Lower Level Gallery, 3500 S. Rural Road.

artwork in the front windows of the U.S. Post Office at 500 S. Mill Ave.

7 Ceramic Sampler
Juried show on display at the U.S. Post Office at 500 S. Mill Ave., through April 8.

9 MLK Celebration Exhibition
Photos and Bios from Cultural Diversity Exhibition that celebrates Multiculturalism in Tempe. Through March 15 at the Edna Vihel Center for the Arts lobby, 3340 S. Rural Road.

11 ASU to YOU: Coffee, Conversation & the Arts
ASU Art Museum Curator John Spiak will lead a discussion on the PBS film series, *The Creative Spirit: Creativity at Work - Transforming Work* from 6:30 to 8:30 p.m. at the TLC Classroom, Tempe Public Library, 3500 S. Rural Road.

January Events

1 Arizona Print Group
Featuring unique, limited edition hand-pulled prints. Intaglio, relief, lithograph, monotype and silkscreen works reflect a variety of creative personalities. Through Feb. 18 at the Tempe Public Library, Lower Level Gallery, 3500 S. Rural Road.

1 Reflections of Tempe Beach
Learn more about the park's 80-year history at the Tempe City Hall Gallery, 31 E. 5th Street, 1st floor, through March 14.

1 Pee Posh Project children's exhibit
This exhibition of traditional arts from Native American children of the Gila River will be on display through March 15 at the Tempe Public Library, 2nd floor gallery, 3500 S. Rural Road.

1-7 Post Office Exhibition
Local artists Pamela Wood, Eric Burris and Geoffery Gildner display their

Tempe City Council

Hugh Hallman, Mayor
Mark Mitchell, Vice Mayor
Ben Arredondo
Barb Carter
Leonard Cople
Pam Goronkin
Hut Hutson
Will Manley, City Manager

City of Tempe Municipal Art Commission

The City of Tempe Municipal Arts Commission is an advisory board whose mission is to create an atmosphere in which the arts can flourish and to inspire Tempe residents to recognize the arts as essential to the whole life of the community. Commission members are:

| | | |
|-----------------|------------------|---------------|
| Sheilah Britton | Betsy Fahlman | Lisa Morley |
| Scott Burge | Carmon Fernandez | Kathy Stevens |
| Ed Coyoli | Kate Hanley | Linda Sleight |
| Laura Davis | Paul Hubbell | Ben Tyler |
| Scott Essex | Mary Ann Marcus | Manjula Vaz |

City of Tempe
Cultural Services Division
Edna Vihel Center for the Arts
3340 S. Rural Road
Tempe, AZ 85282
Telephone: 480/350-5287
Fax: 480/350-5161

www.tempe.gov/arts

Tempe Art news
Writers: Scott Essex, Mary E. Fowler
Photography: Don Fassinger, Mary Fowler

On the cover (L to R): John Kane, Doug Brown and Joe Salvatore, of Tempe-based ARCHITEKTON.

Tempe Art news

Art Happens in Tempe



Winter 2005

Designing a World Class Arts Center

Profile: TMAC duo prepare for sequel, credits abound

Public art in light rail stations reflects Tempe community

Tempe

Cultural Services Division
Edna Vihel Center for the Arts
3340 S. Rural Road
Tempe, AZ 85282
480/350-5287

Center Line:

Tempe Center FOR THE Arts

TALENTED CAST DESIGNS World Class facility

It takes a dedicated team to build a "World Class" performing arts center. And Tempe Center for the Arts has assembled an incredible cast.

Supportive and active residents; a dedicated City Council and staff; helpful community and business groups; and strong performing arts organizations, all have joined in setting goals and standards to make the facility an outstanding and unique performance space.

Anchoring the team is a group of equally dedicated architects, planners, designers and artists whose collaboration is taking shape on the southwest bank of the Tempe Town Lake.

Heading the design team is Barton Myers Associates, Inc., of Los Angeles, in cooperation with

the Tempe-based architectural design firm ARCHITEKTON. These companies are charged with designing everything from site, floor and theater plans to building elevations, acoustical strategies, seating and landscape plans and more.

"We have created a very special place for the people of Tempe to experience theater," Associate in Charge Peter W. Rutti, of Barton Myers Associates, said. "(We) have taken great care to choreograph the visitor's arrival so that every step of the way one feels (that s/he is) in a very special place. This feeling will be especially evident once one takes a seat in the Main Theater. The inti-

macy achieved in the room will make one feel as if (s/he is) a part of the performance."

ARCHITEKTON's Joseph M. Salvatore, AIA, Executive Architect for Tempe Center for the Arts, manages the entire design team and the design process. He understands the importance of the project for Tempe residents.

"The citizens have spoken clearly of their desires for a world class performing arts center with their support of a sales tax increase dedicated to this project," Salvatore said. "The city is responding with the best of the best for its citizens. Tempe has provided its best site for the project and selected a quintes-

sential performing arts center design team through an exhaustive search. The new center will exceed any of the highest expectations set for it."

Also in on the action is Theatre Projects Consultants, an international team of experts who specialize in the design of theatres and performance spaces. Theatre Projects combines hands-on, practical experience working in live theatre with extensive experience in designing and building performing arts facilities to produce outstanding and lively theatres that meet the needs of its users and community.

In coming issues, *Art Talk* will explore some of the unique features currently being constructed from designs by this talented team of professionals.



Main Theater balcony

Art Talk Profile:

One of the longer running duets in community service comes to an end in December. Sheilah Britton and Kathy Stevens have served on the Tempe Municipal Arts Commission for more than six years apiece, each chairing the commission in the one of the last two years.

It has been a show spectators and critics hate to see end. The duo has accomplished so much for the Tempe Center for the Arts (TCA), while supporting ongoing programs. Before Kathy and Sheilah start working on their sequels, here is our version of their credits.

Kathy is finishing her second term as chair of the commission. She also has been the chair of the Communications, Executive and Art in Public Development committees. Looking back, she's especially proud of her involvement in getting the TCA on the ballot and about bringing art education back into the schools through the Grants Committee.



Kathy Stevens

Kathy is a native Arizonan and has lived in Tempe since 1973. Her daughter and three grandchildren also live in the Valley. Kathy has worked for Salt River Project for the last 19 years, starting in the phone bank and moving to the Community Relations Area 13 years ago. She has a degree in Organizational Communications from ASU.

In addition to the Arts Commission, Kathy has been involved in the community through Sponsorship Review Board, TCC Agency Review Board for health and human services, the Tempe and Valley Leadership programs and she is currently the President of the Wood Elementary School PTSA. As a past competitive race walker, Kathy has won many medals. She has also competed in the Tour de Tucson and two marathons.

Sheilah moved to Tempe 27 years ago. She is an award winning writer, director and producer. She currently is the Assistant Director of Programming and Production at the Computing "Commons Gallery for the Arts and the Studies in the Arts" at ASU. Prior to that she was the Arts Research

Administrator for the Institute for Studies in the Arts at ASU. She manages specialized research in the fine arts utilizing new forms and technologies.

Sheilah is the immediate past chair of the commission, served on the Public Art Committee and has chaired the Communications Committee. She served on the panel that selected the artists for the TCA.

Outside the commission, Sheilah has enjoyed her work on the Tempe Community Council and is especially proud of a writing program she has developed for patients at Mayo Clinic.



Sheilah Britton

Thanks for all your hard work. Your contribution can only be rated "Two Thumbs Up."

- Scott Essex



Artist Buster Simpson's rendering of the Tempe Town Lake light rail bridge.

TEMPE LIGHT RAIL'S public art

REFLECTS VIBRANT COMMUNITY

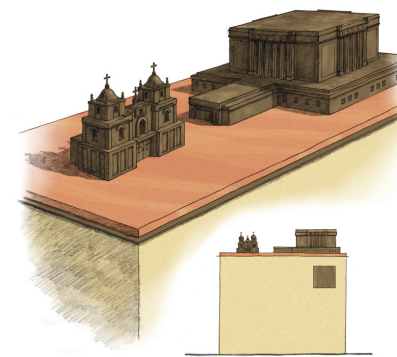
The Valley's light rail system is intended to provide a link between the cities of Phoenix, Tempe, Mesa and Glendale and to be an integral part of a comprehensive Valley-wide transit system.

It also will be a showcase for public art. The seven Tempe light rail stations will feature outstanding artwork that reflects the community's culture, history, people and place in the region. Here's an overview.

5th Street and College Avenue

Artist: *Tad Savinar*

A series of highly detailed bronze sculptures of natural and man-made landmarks celebrate the place, people and presence of Tempe within the region.



Tad Savinar's artwork showcases natural and man-made regional landmarks, such as Our Lady of Guadalupe and the Arizona Tempe.

3rd Street and Mill Avenue

Artist: *Catherine Widgery*

This design includes silk-screened digital photos on canopies that create "ghost shadows." An etched glass sculpture in the center represents a digitized mesquite tree.



Artwork will adorn the walls of the Town Lake light rail bridge.

Apache Boulevard

Artists: *Christine Bourdette, Dan Corson, Benson Shaw, Suikang Zhao*

A team of four artists collaborated on the following four light rail stations along Apache Boulevard.

Dorsey Lane

The artwork at this station features 3-D green screen mosaic inserts focusing on dialogue and different points of view. Pavement artwork radiates from central points and interweaves with the overall platform pattern. An illuminated chrome Saguaro skeleton within the green screen completes the artwork which is meant to explore "the individual and the group."

Price Road

The station will feature 3-D green screen mosaic inserts which reflect the divisions and re-connections made over time, focusing on the canal, the freeway and the strong neighborhood pride that prevails.

Smith Road/Martin Lane

The structure of the family guides the work at this location with 3-D green screen mosaic inserts.

McClintock Drive

The artwork will showcase 3-D green screen mosaic inserts with hour-glass-shaped open-



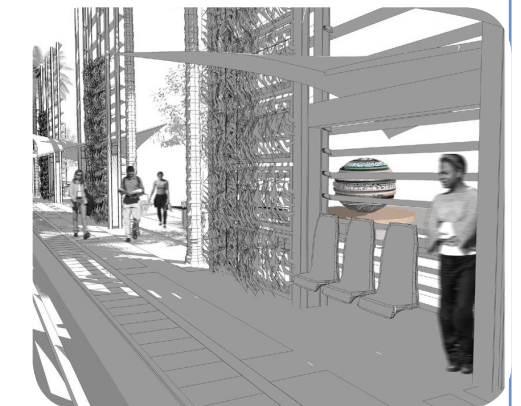
Tall, slender poles mark the entrance of the McClintock station and mimic the existing palm trees.

ings that refer to time and cultural history and light blue five-gallon water bottles illuminated by dark blue neon tubes formed into water chandeliers.

University Drive and Rural Road

Artists: *Bill Will, Norie Sato*

The artwork is composed of a monumental sphere and a related "Cabinet of Curiosities," both containing visual and textual information. Collections, research, discovery and history, all play a role in the design.



Artists express the theme of the "enlightened oasis" by creating art works that underscore diverse approaches to gathering knowledge.

For information on Tempe's Public Art program and the public art transit stations, call 480/350-5163 or email leah_wiebe-smith@tempe.gov.