

Image © 2005 DigitalGlobe

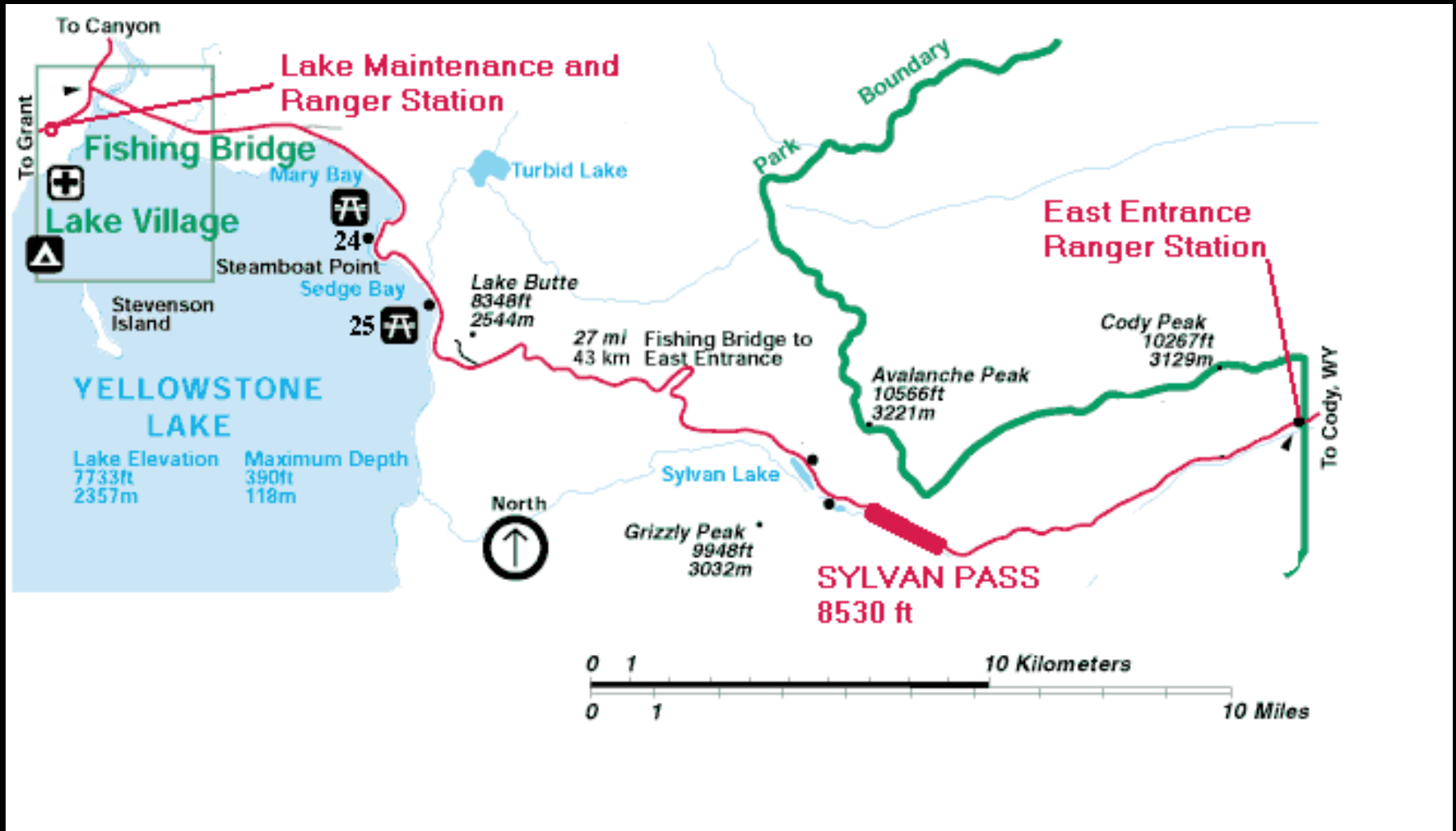
© 2005 Google

Pointer 44°27'54.97" N 110°07'14.86" W elev. 9008 ft

Streaming  100%

Eye all 12059 ft

East Entrance Road



Sylvan Pass to East Entrance - 7 miles



Crow Creek Pass
6

Creek
1

6

Cody Peak
2750

SHOSHONE NATIONAL FOREST
NORTH ABSAROKA WILDERNESS

Avalanche Peak
3221

3124

Hoyt Peak

Sylvan Pass

Creek

2701

Creek

3031 Grizzly Peak

Middle

3121 Top Notch Peak

2500

Hills

2750

NATIONAL PARK BOUNDARY

2810

2991

31

36

3240 Reservation Peak

Creek

1

6

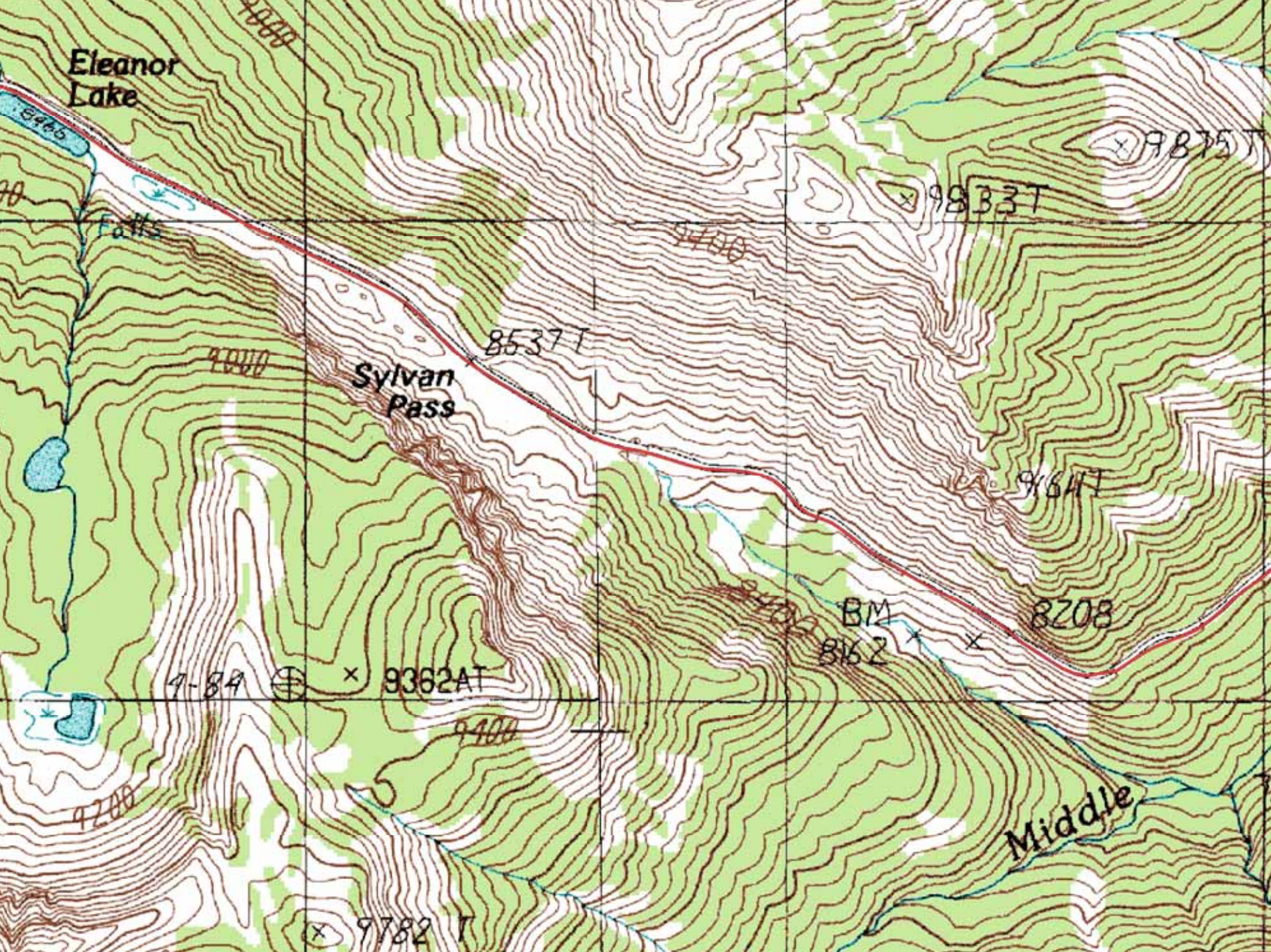
3246 Mount Doane

2906

Arthur Peak

1

6



Eleanor Lake

Falls

Sylvan Pass

Middle

9875 T

9833 T

8537 T

9184 T

8208

BM
8162

9-84 ⊕ x 9362 AT

9400

9782 T

9000

9400

9200

70





































