

**The mission of the
Department of Human
Services:**

*Assisting people to become
independent, healthy and
safe.*

These arrows are shown
in each performance
measure and indicate the
direction of a positive
outcome, which may be
an increase or a
decrease, depending on
the measure.

GOOD



Please click on one of the links below for information related to the listed performance measure. DHS utilizes performance measure data to constantly strive toward improved outcomes for clients, whether we are currently meeting the goal or not. Performance measures serve as a key management tool to track areas of success and areas needing improvement.

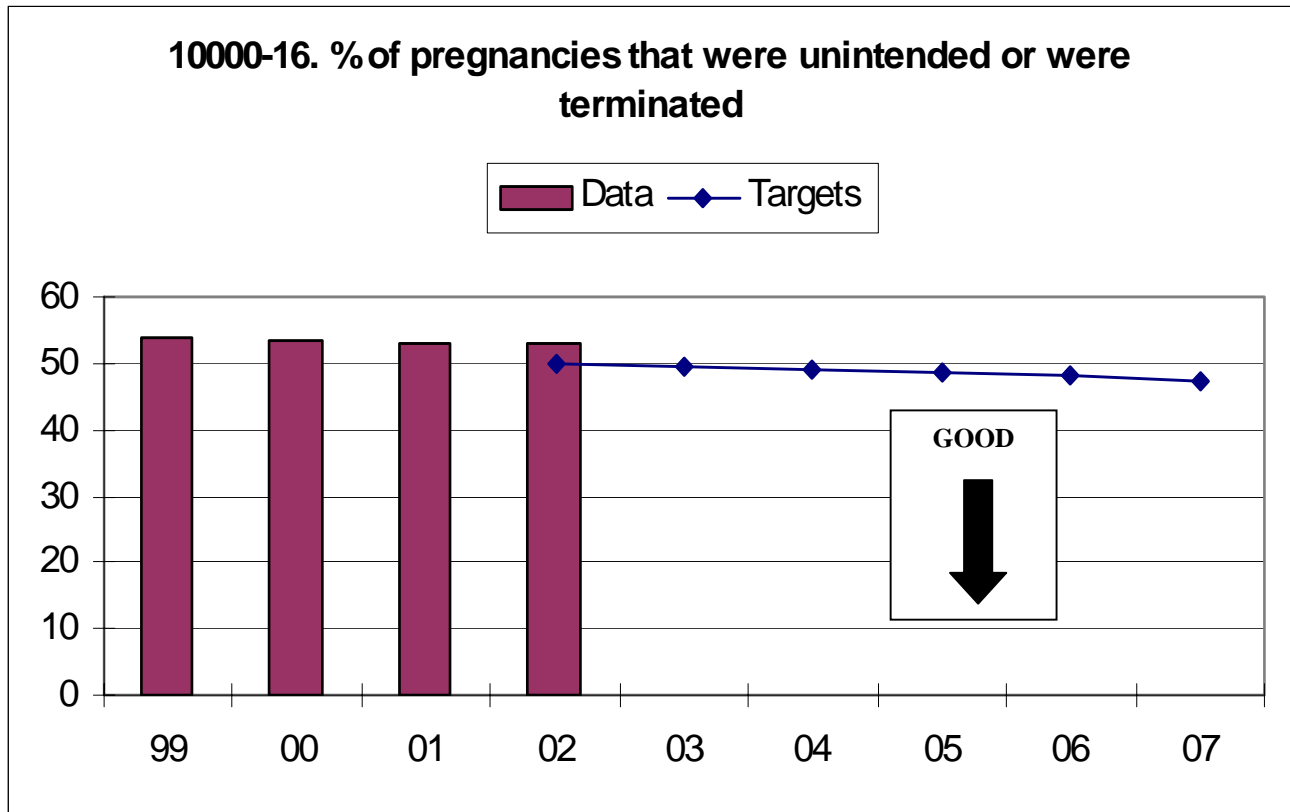
Please note that the charts have the number 10000 in front of the performance measure number. This is the DHS agency number and indicates which agency owns a particular performance measure.

If you have questions about the information presented in this report, please contact Cathy Iles, DHS Performance Measure Coordinator, by phone at (503) 945-5855 or by e-mail at Cathy.F.Iles@state.or.us.

GOAL: PEOPLE ARE HEALTHY
16. The percentage of pregnancies that were unintended or were terminated.
17. The percentage of low-income women who receive prenatal care in the first 4 months of pregnancy.
18. Percentage of engaged clients who complete alcohol and other drug (AOD) abuse treatment and are not abusing AOD.
19. Percentage of 8th graders at high risk for alcohol and other drug use.
20. Tobacco use among the following groups: <ul style="list-style-type: none"> a. Tobacco use among adults. b. Tobacco use among youth. c. Tobacco use among pregnant women.
21. Number of cigarette packs sold per capita.
22. The percentage of 19-35 month old children who are adequately immunized.

16. The percentage of pregnancies that were unintended or were terminated.

<i>Did DHS meet or exceed the goal in the most recent year that data was available?</i>	<i>NO</i>
---	-----------

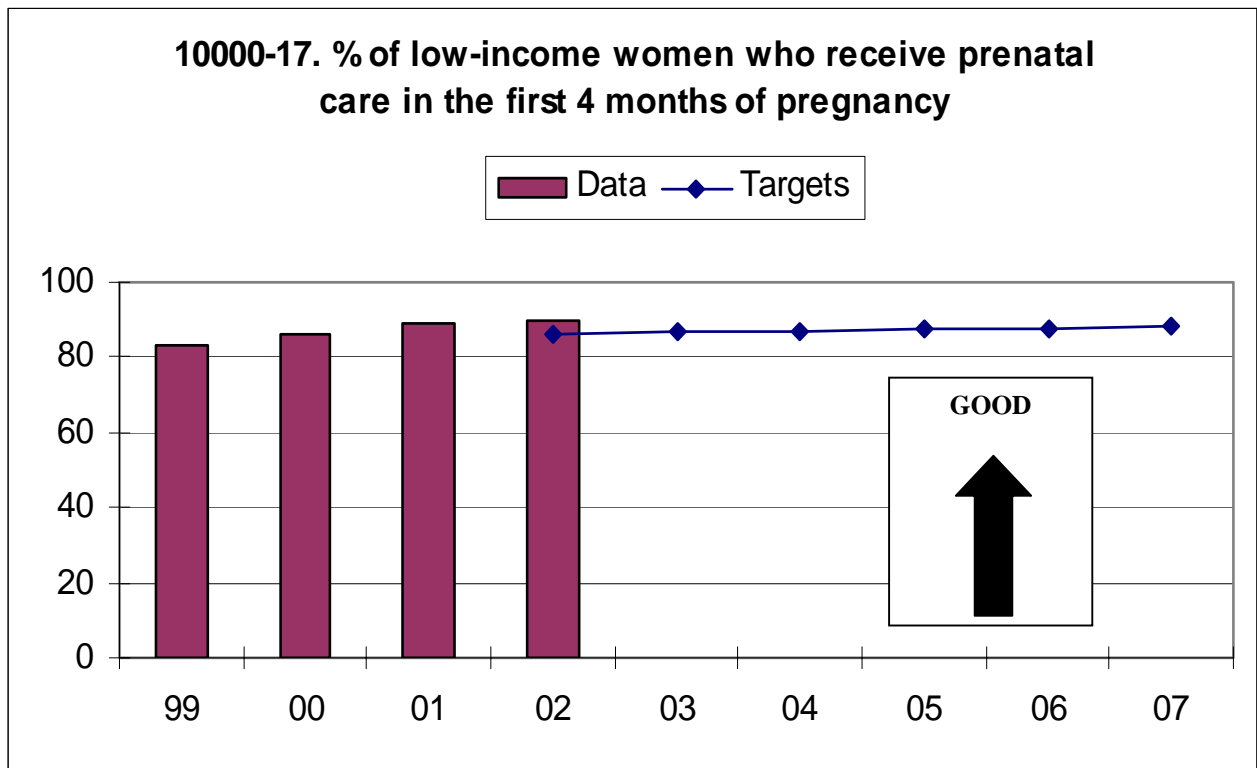


	1999	2000	2001	2002	2003	2004	2005	2006	2007
Target	NA	NA	NA	50.0	49.5	49.0	48.5	48.0	47.5
Data	53.0	52.3	51.0	52.9					

[*Return to Performance Measure list*](#)

17. Percentage of low-income women who receive prenatal care in the first four months of pregnancy.

<i>Did DHS meet or exceed the goal in the most recent year that data was available?</i>	YES
---	------------

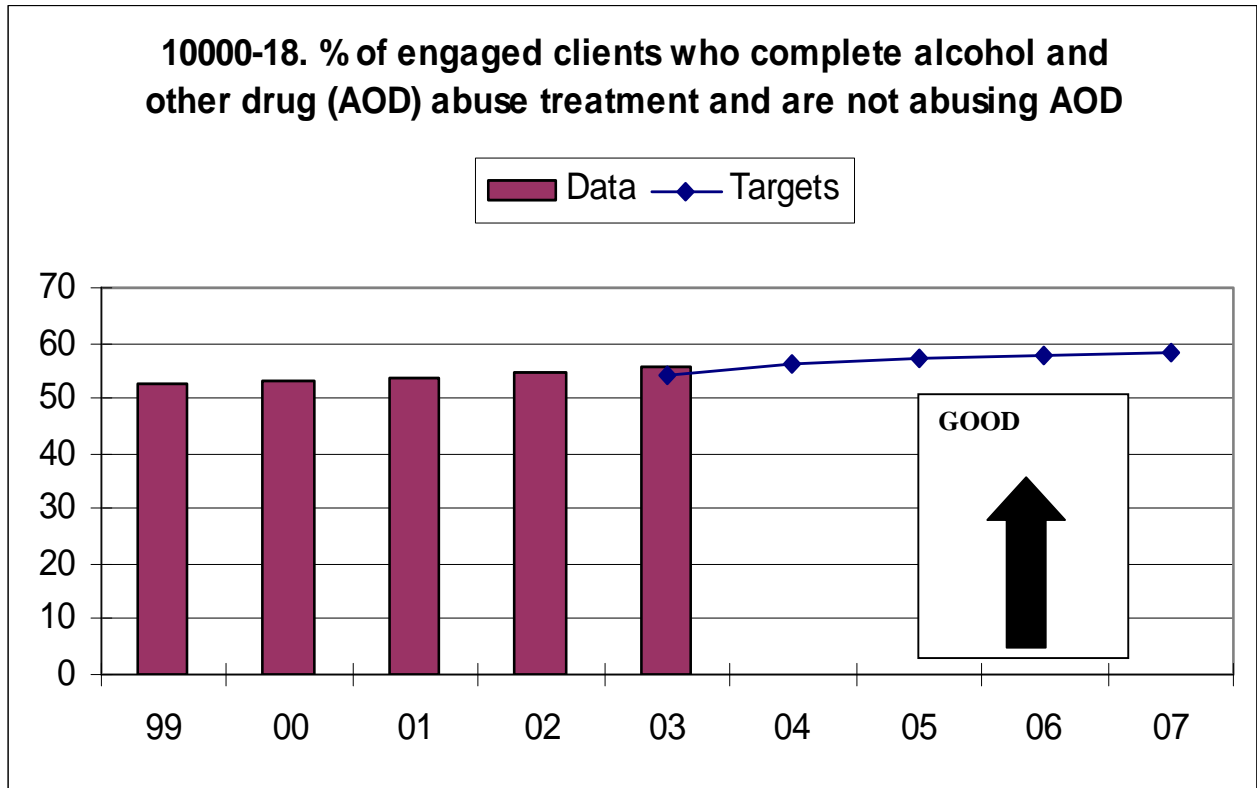


	1999	2000	2001	2002	2003	2004	2005	2006	2007
Target	NA	NA	NA	86.2	86.7	87.1	87.5	87.9	88.3
Data	83.5	85.8	89.2	89.5					

[Return to Performance Measure list](#)

18. Percentage of engaged clients who complete alcohol and other drug (AOD) abuse treatment and are not abusing AOD.

<i>Did DHS meet or exceed the goal in the most recent year that data was available?</i>	YES
---	------------



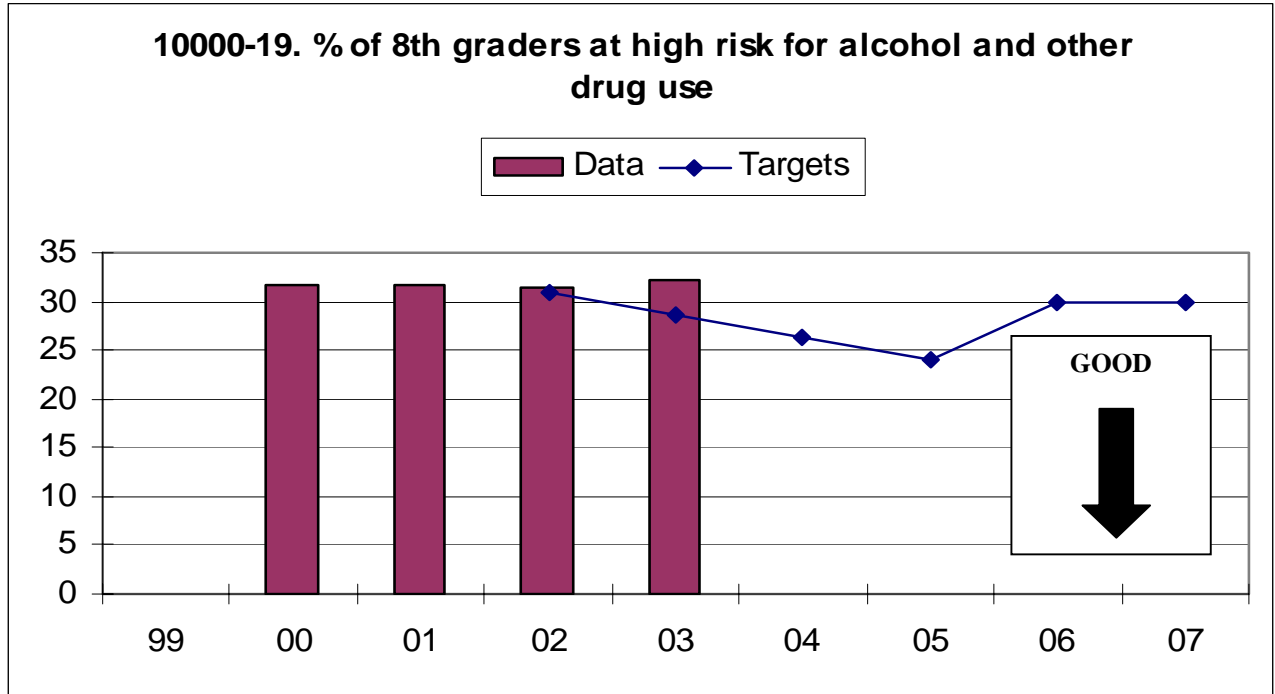
	1999	2000	2001	2002	2003	2004	2005	2006	2007
Target	NA	NA	NA	NA	54.4	56.2	57.0	57.5	58.0
Data	52.8	53.1	53.4	54.6	55.7				

[County level data available for this performance measure. Click here!](#)

[Return to Performance Measure list](#)

19. Percentage of eighth graders at high risk for alcohol and other drug use.

<i>Did DHS meet or exceed the goal in the most recent year that data was available?</i>	NO
---	-----------



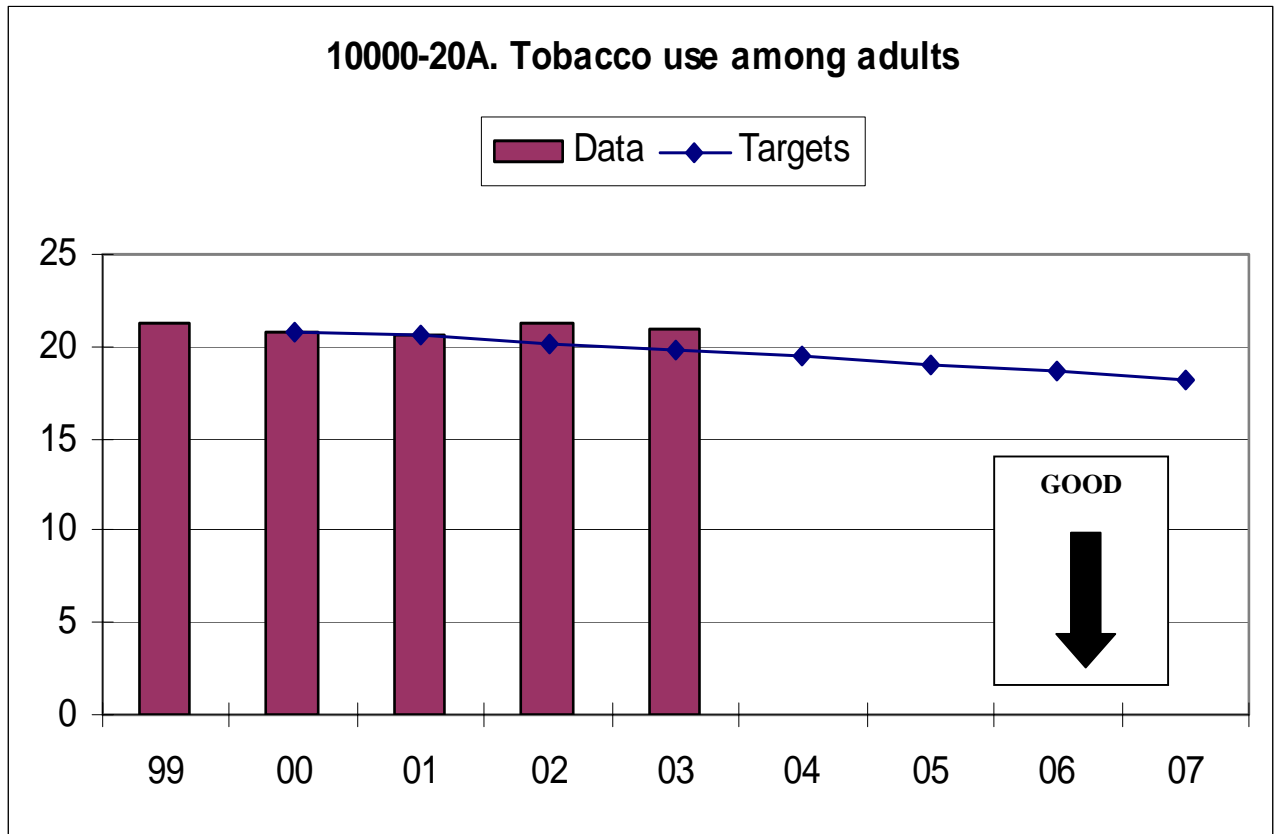
	1999	2000	2001	2002	2003	2004	2005	2006	2007
Target	NA	NA	NA	31.0	28.7	26.3	24.0	30.0	30.0
Data	NA	31.7	31.6	31.3	32.2				

[County level data available for this performance measure. Click here!](#)

[Return to Performance Measure list](#)

20-A. Tobacco Use Among Adults. (%)

<i>Did DHS meet or exceed the goal in the most recent year that data was available?</i>	<i>NO</i>
---	-----------

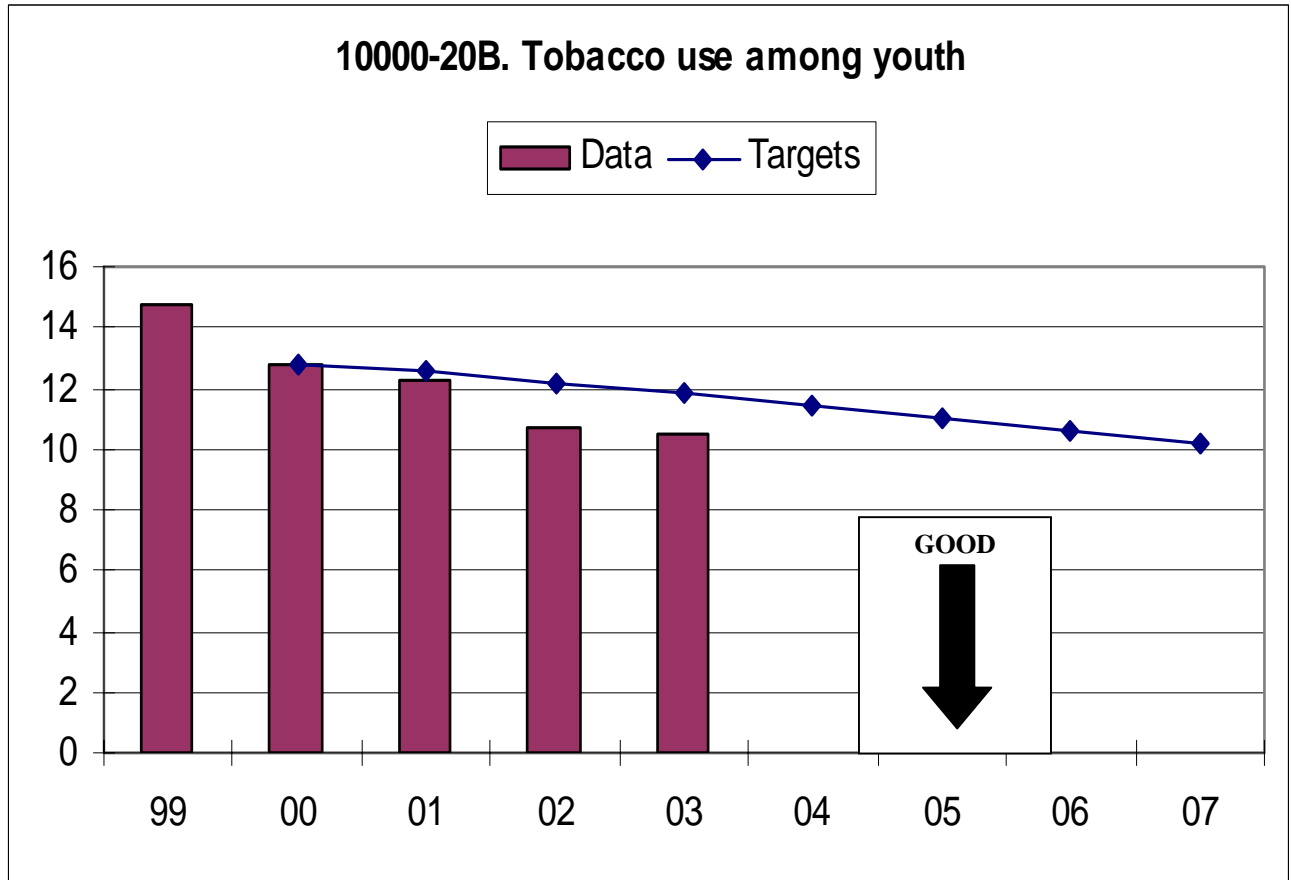


	1999	2000	2001	2002	2003	2004	2005	2006	2007
Target	NA	20.7	20.6	20.2	19.8	19.4	19.0	18.6	18.2
Data	21.2	20.7	20.6	21.3	20.9				

[*Return to Performance Measure list*](#)

20-B. Tobacco Use Among Youth. (%)

<i>Did DHS meet or exceed the goal in the most recent year that data was available?</i>	YES
---	------------

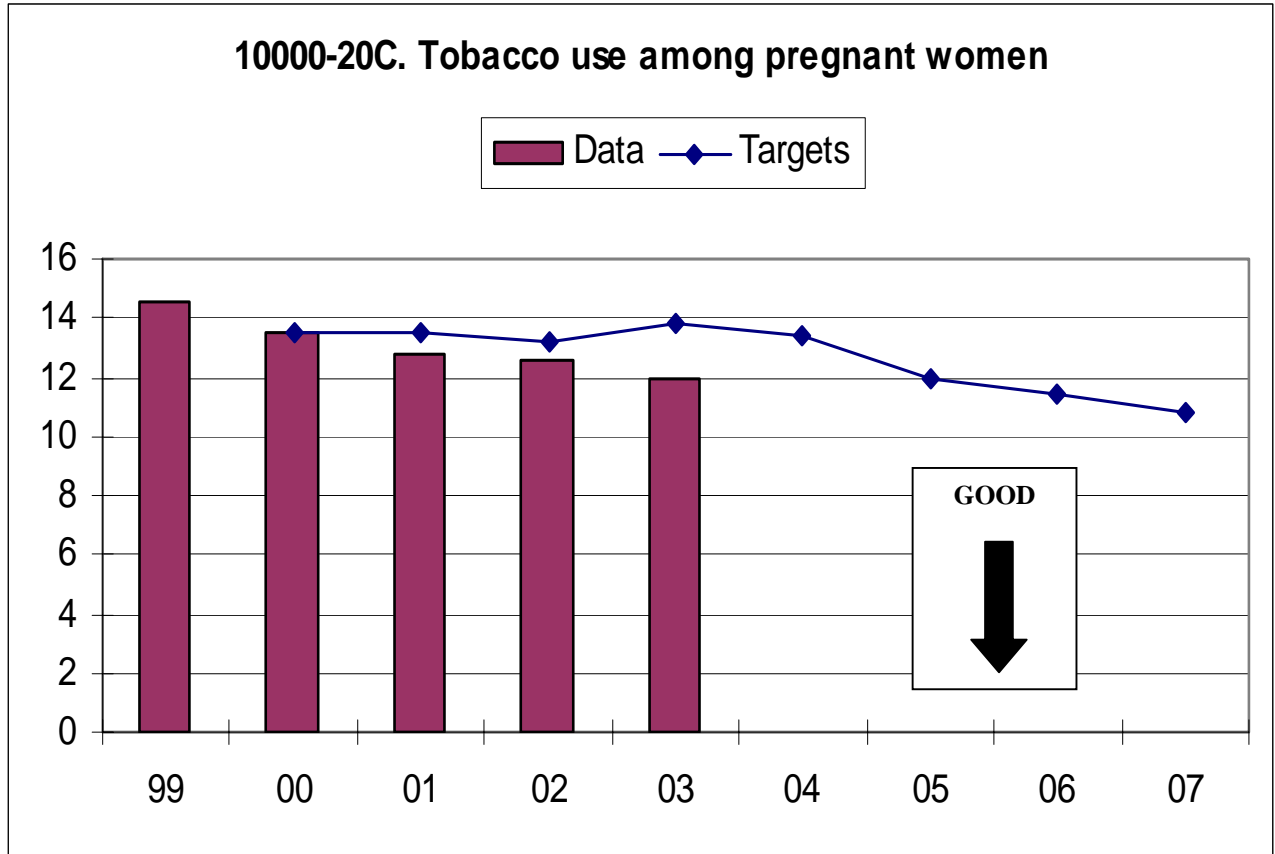


	1999	2000	2001	2002	2003	2004	2005	2006	2007
Target	NA	12.8	12.6	12.2	11.8	11.4	11.0	10.6	10.2
Data	14.8	12.8	12.3	10.7	10.5				

[*Return to Performance Measure list*](#)

20-C. Tobacco Use Among Pregnant Women. (%)

<i>Did DHS meet or exceed the goal in the most recent year that data was available?</i>	YES
---	------------



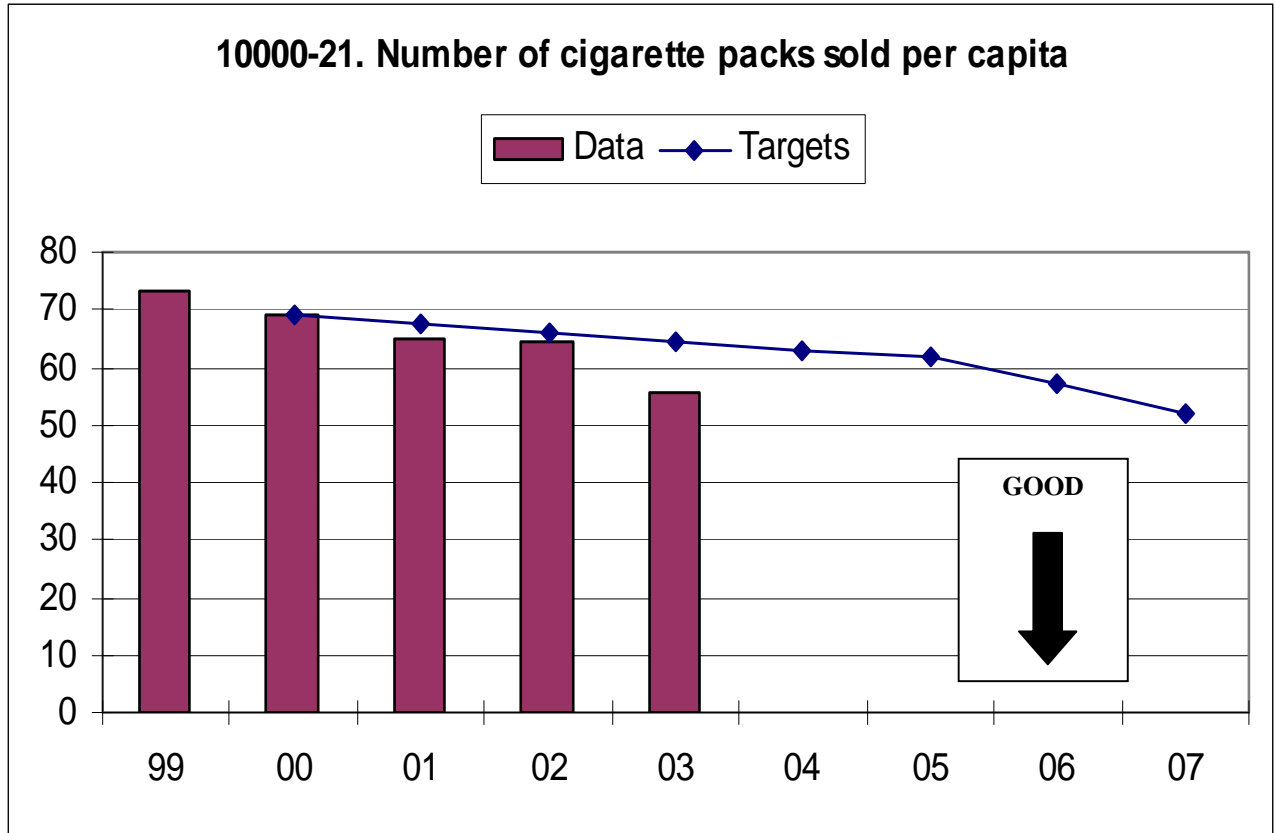
	1999	2000	2001	2002	2003	2004	2005	2006	2007
Target	NA	13.5	13.5	13.2	13.8	13.4	12.0	11.4	10.8
Data	14.5	13.5	12.8	12.6	12.0				

[County level data available for this performance measure. Click here!](#)

[Return to Performance Measure list](#)

21. Number of Cigarette Packs Sold Per Capita.

<i>Did DHS meet or exceed the goal in the most recent year that data was available?</i>	YES
---	------------

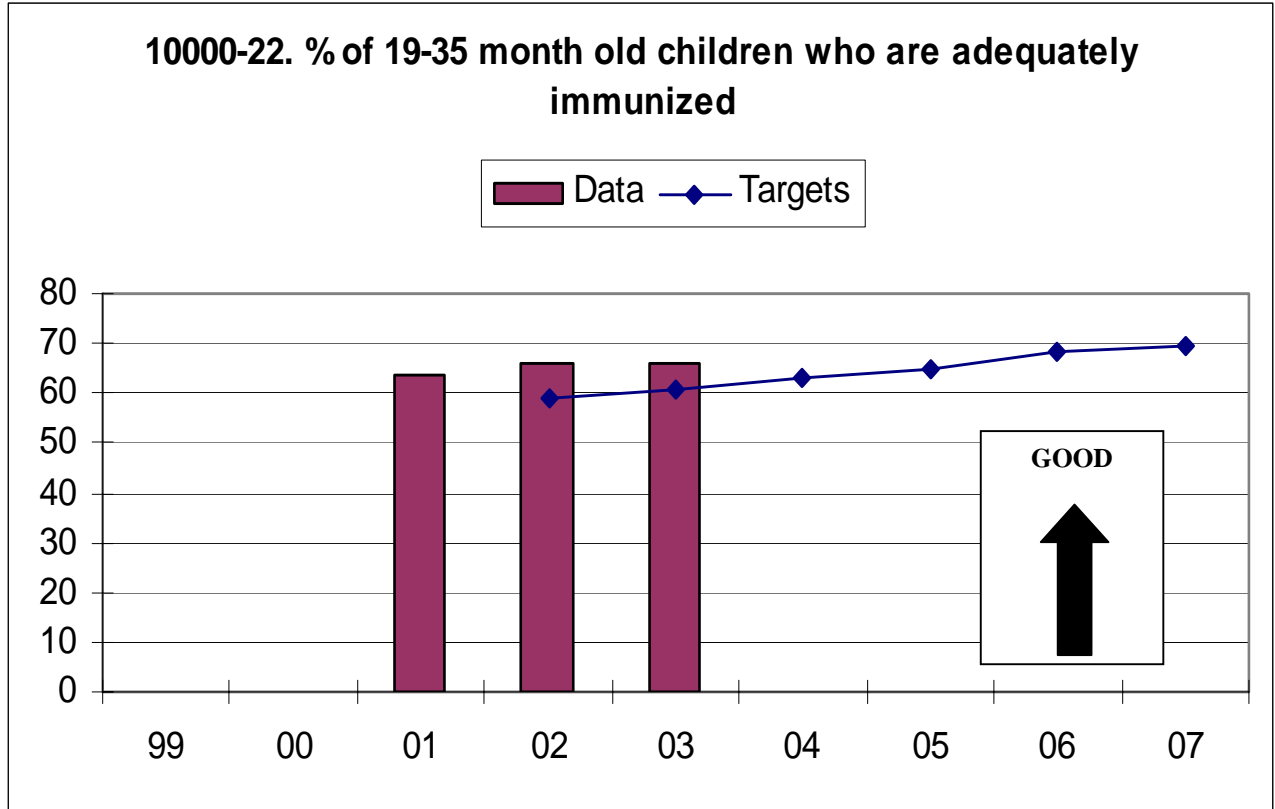


	1999	2000	2001	2002	2003	2004	2005	2006	2007
Target	NA	69.0	67.5	66.0	64.5	63.0	62.0	57.0	52.0
Data	73.0	69.3	65.1	64.3	55.5				

[Return to Performance Measure list](#)

22. Percentage of 19-35 month old children who are adequately immunized.

<i>Did DHS meet or exceed the goal in the most recent year that data was available?</i>	YES
---	------------



	1999	2000	2001	2002	2003	2004	2005	2006	2007
Target	NA	NA	NA	58.8	60.8	62.8	64.8	68.2	69.2
Data	NA	NA	63.8	65.9	66.2				

[*Return to Performance Measure list*](#)

Return to Performance Measure Summary

Oregon Dept. of Human Services KEY PERFORMANCE MEASURE #18

The percentage of engaged clients who complete alcohol and other drug (AOD) abuse treatment and are not abusing AOD. Treatment is defined as all clients served in Outpatient, DUII Outpatient, Residential and Methadone Maintenance. These data represent episodes closed during the state fiscal year (July 1 - June 30).

	FY 2000	FY 2001	FY 2002	FY 2003	FY 2004
Target	NA	NA	NA	54.4%	56.2%
Statewide Total	53.1%	53.4%	54.6%	55.7%	60.0%
Baker	46.5%	51.4%	54.7%	54.8%	65.9%
Benton	56.5%	59.6%	61.3%	56.6%	76.0%
Clackamas	58.4%	53.4%	54.4%	63.1%	65.2%
Clatsop	55.3%	52.6%	54.6%	64.2%	56.6%
Columbia	48.7%	51.3%	56.6%	57.8%	62.1%
Coos	49.6%	56.8%	57.4%	58.6%	65.2%
Crook	59.9%	52.2%	54.3%	55.3%	60.7%
Curry	66.4%	55.2%	63.5%	62.1%	65.4%
Deschutes	61.2%	60.9%	60.8%	60.7%	62.2%
Douglas	56.5%	51.4%	59.6%	56.5%	64.6%
Gilliam*	see Mid-Columbia				
Grant	44.6%	57.8%	55.2%	59.0%	58.5%
Harney	54.6%	56.9%	50.8%	61.3%	62.3%
Hood River*	see Mid-Columbia				
Jackson	54.6%	56.0%	57.4%	59.7%	61.6%
Jefferson	46.6%	49.7%	42.5%	42.5%	59.6%
Josephine	48.4%	49.8%	55.7%	60.0%	59.4%
Klamath	56.2%	56.8%	55.4%	56.7%	58.7%
Lake	68.2%	65.0%	64.1%	44.1%	69.8%
Lane	52.4%	50.1%	52.6%	54.7%	63.5%
Lincoln	39.0%	41.6%	47.7%	47.3%	53.7%
Linn	57.3%	54.8%	60.0%	64.5%	71.1%
Malheur	66.8%	70.8%	66.0%	64.9%	65.0%
Marion	54.5%	57.2%	59.8%	56.4%	62.8%
Mid-Columbia*	64.2%	66.3%	66.7%	64.5%	71.8%
Morrow/Wheeler**	51.1%	43.0%	61.0%	65.5%	58.0%
Multnomah	48.4%	48.9%	46.3%	46.5%	50.5%
Polk	64.5%	64.9%	60.6%	65.6%	75.9%
Sherman*	see Mid-Columbia				
Tillamook	54.8%	60.8%	56.5%	65.5%	57.7%
Union	58.8%	45.9%	49.4%	55.8%	56.8%
Umatilla	58.7%	47.4%	45.9%	50.7%	46.3%
Wallowa	59.0%	45.3%	54.5%	51.1%	66.0%
Wasco*	see Mid-Columbia				
Washington	58.5%	61.2%	57.3%	60.0%	65.4%
Yamhill	63.7%	63.9%	57.0%	61.7%	61.5%

* These counties served by Mid-Columbia - Gilliam, Hood River, Sherman, Wasco

** Morrow and Wheeler Counties report together

[Return to Performance Measure Summary](#)

Oregon Dept. of Human Services KEY PERFORMANCE MEASURE #19

Percentage of 8th graders at high risk for alcohol and other drug use. (Measured by averaging the Community Domain Risk Factors--the percent at high risk--from the Oregon Healthy Teens student survey.)

Note: County Level responses are reported whenever possible. If fewer than 50 students responded from a county, their responses were added together with adjacent to make a valid group for averaging.

	2001	2002	2003	2004
	High Risk Score	High Risk Score	High Risk Score	High Risk Score
Target	NA	31.0%	28.7%	26.3%
Statewide Total	43.0%	42.5%	43.6%	38.9%
Baker	44.0%	40.6%	45.5%	46.1%
Benton	37.9%	33.6%	37.8%	31.9%
Clackamas	40.1%	39.7%	44.3%	28.1%
Clatsop	43.8%	44.8%	49.6%	47.7%
Columbia	45.6%	37.7%	44.7%	44.9%
Coos	42.6%	47.5%	45.7%	45.0%
Crook	47.0%	36.6%	43.1%	41.7%
Curry	45.9%	44.1%	51.3%	44.5%
Deschutes	43.5%	41.2%	44.7%	38.4%
Douglas	48.0%	49.3%	51.9%	45.4%
Gilliam	45.4%	42.8%	43.0%	42.6%
Grant	50.8%	42.1%	52.5%	41.9%
Harney	50.8%	42.1%	52.5%	44.3%
Hood River	48.2%	42.2%	38.5%	42.2%
Jackson	40.2%	38.9%	40.4%	43.3%
Jefferson	47.8%	52.8%	52.5%	48.5%
Josephine	42.7%	43.0%	44.5%	44.5%
Klamath	42.7%	43.0%	44.5%	46.3%
Lake	43.6%	41.8%	44.2%	48.2%
Lane	44.7%	41.7%	40.7%	37.8%
Lincoln	58.8%	41.1%	42.3%	39.9%
Linn	40.3%	43.7%	46.7%	40.3%
Malheur	43.6%	41.3%	44.2%	48.3%
Marion	46.4%	43.4%	44.4%	39.2%
Morrow	48.2%	42.5%	42.6%	49.2%
Multnomah	39.5%	40.7%	42.6%	37.9%
Polk	42.7%	45.2%	47.7%	41.0%
Sherman	45.4%	42.8%	43.0%	42.3%
Tillamook	44.4%	41.6%	46.6%	50.9%
Umatilla	34.4%	37.9%	41.0%	41.9%
Union	40.2%	38.5%	39.9%	39.7%
Wallowa	41.4%	39.1%	44.2%	42.2%
Wasco	43.3%	47.6%	50.4%	43.2%
Washington	36.5%	41.3%	38.9%	37.9%
Wheeler	45.4%	42.8%	43.0%	42.6%
Yamhill	40.8%	39.5%	41.3%	45.2%

Return to Performance Measure Summary

Oregon Dept. of Human Services KEY PERFORMANCE MEASURE #20c

Tobacco use among pregnant women.

Live Births with Maternal Tobacco Use, Oregon Residents, 1999-2003

	1999		2000		2001		2002		2003	
	Number	Percent	Number	Percent	Number	Percent	Number	Percent	Number	Percent
Target		<i>NA</i>		<i>13.5</i>		<i>13.5</i>		<i>13.2</i>		<i>13.8</i>
Statewide	6,492	14.5%	6,105	13.5%	5,753	12.8%	5,618	12.6%	5,452	11.9%
Baker	51	30.2%	40	23.7%	36	23.2%	49	28.0%	28	19.2%
Benton	80	9.8%	66	8.7%	55	6.7%	65	8.4%	55	7.1%
Clackamas	551	13.5%	501	12.0%	515	12.6%	511	12.6%	434	10.8%
Catsop	79	21.1%	78	20.3%	78	20.7%	85	19.9%	78	21.3%
Columbia	105	18.6%	108	20.5%	99	18.9%	97	19.0%	98	18.2%
Coos	174	27.0%	132	21.4%	139	23.9%	158	25.2%	145	23.0%
Crook	45	20.8%	38	17.9%	55	22.7%	38	17.8%	42	17.9%
Curry	33	29.7%	23	19.0%	33	26.0%	20	18.3%	33	21.2%
Deschutes	166	12.7%	207	14.4%	209	14.2%	207	14.0%	204	13.0%
Douglas	291	26.2%	249	24.2%	238	22.0%	256	25.0%	246	22.2%
Gilliam	<5	16.7%	<5	11.8%	<5	11.1%	<5	21.4%	<5	19.0%
Grant	8	10.3%	7	10.3%	8	12.7%	15	20.8%	8	12.3%
Hamey	12	13.6%	23	25.8%	15	18.5%	16	21.3%	14	21.2%
Hood River	30	8.9%	30	8.5%	18	6.1%	23	7.1%	14	4.8%
Jackson	326	15.9%	336	16.5%	328	15.5%	315	15.1%	300	14.0%
Jefferson	40	13.6%	51	16.6%	39	13.3%	40	13.2%	31	9.8%
Josephine	194	23.5%	202	26.9%	187	25.3%	174	23.7%	184	22.9%
Klamath	173	21.4%	184	22.2%	175	21.3%	133	17.7%	157	18.8%
Lake	16	24.6%	13	16.3%	14	20.3%	15	20.8%	15	21.4%
Lane	602	16.3%	481	13.2%	408	11.5%	409	11.8%	444	11.8%
Lincoln	101	24.1%	106	24.8%	94	23.0%	89	21.3%	99	23.1%
Linn	358	24.8%	286	20.5%	266	20.0%	296	21.2%	292	21.5%
Malheur	37	7.5%	33	6.4%	42	9.1%	39	8.1%	41	9.0%
Marion	629	14.1%	512	11.5%	539	12.0%	532	12.1%	500	10.8%
Morrow	22	12.4%	18	11.9%	28	15.6%	10	8.0%	28	15.1%
Multnomah	1,240	13.6%	1,278	13.6%	1,142	12.4%	1,070	11.5%	1,090	11.7%
Polk	85	13.3%	93	12.7%	115	15.5%	82	10.7%	74	9.5%
Sherman	5	31.3%	<5	25.0%	<5	NA	<5	NA	<5	18.2%
Tillamook	54	25.4%	46	19.3%	43	18.3%	39	16.3%	42	16.5%
Umatilla	137	12.2%	136	13.2%	122	11.7%	125	13.2%	165	14.7%
Union	49	15.7%	50	16.8%	49	15.9%	49	17.3%	49	15.2%
Wallowa	17	28.8%	10	14.3%	9	15.0%	10	17.9%	15	22.7%
Wasco	45	16.0%	59	19.3%	53	18.4%	55	19.0%	42	16.0%
Washington	540	7.6%	533	7.1%	433	5.8%	416	5.5%	333	4.4%
Wheeler	<5	8.3%	<5	9.1%	<5	NA	3	30.0%	<5	NA
Yamhill	193	15.8%	169	14.3%	162	13.8%	174	14.7%	143	12.2%

WARNING: Percentages based on less than five events may be unreliable.