

Developmental Pathway

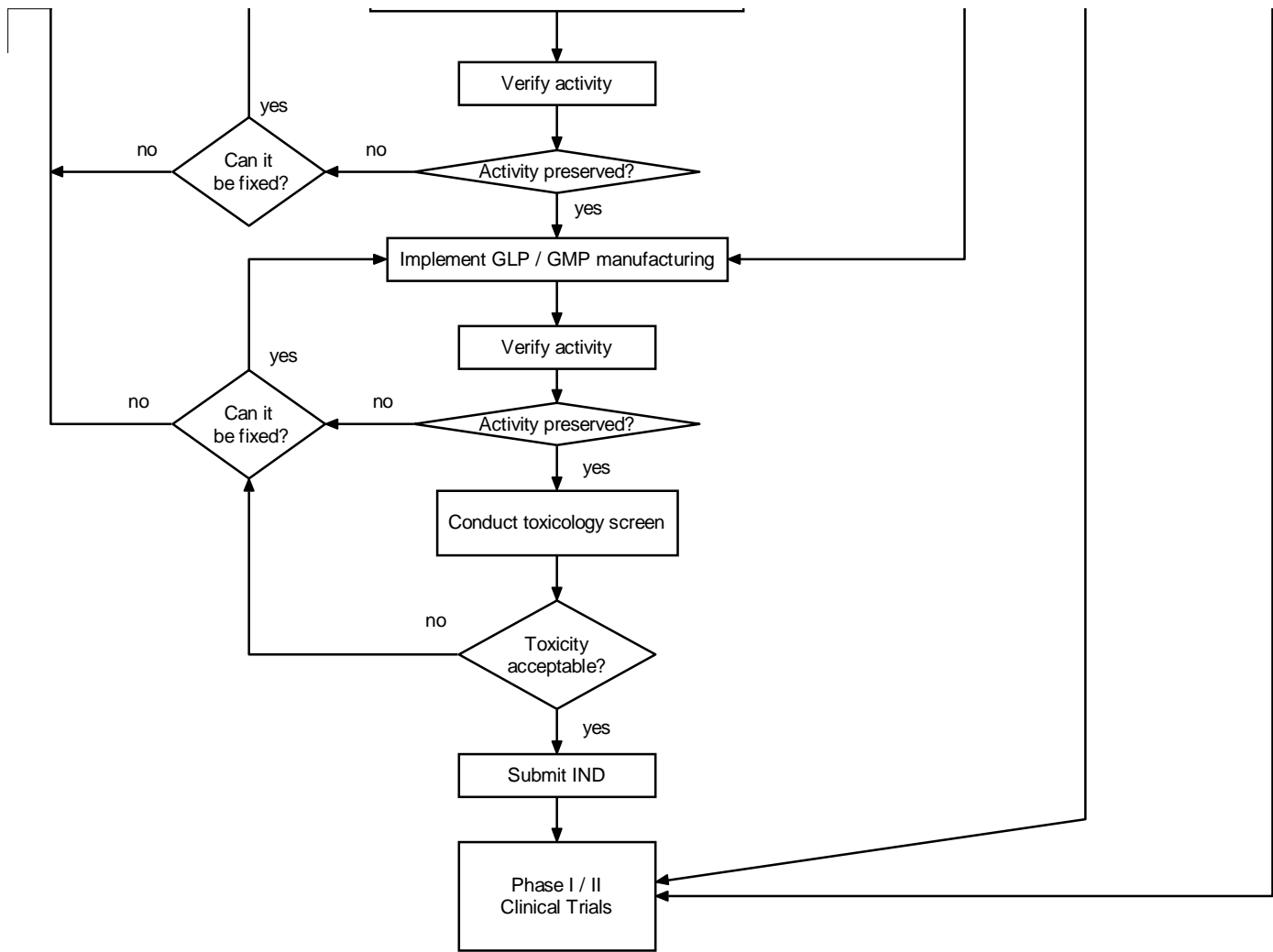
Immune Response Modifiers (Vaccines, Cytokines, etc.)

for

Therapy or Prevention

NCI TRWG version 020607

Box = Action
Diamond = Decision



Note: This pathway is designed to accommodate immune response modifiers of two types: "simple" (such as a cytokine used directly as a therapeutic agent) and "composite" (such as a vaccine that incorporates an antigen, a vector and an immune modulator). For simple agents, the extra boxes that are incorporated in the diagram to capture parallel development of the components of a composite product may be ignored.

*see Biospecimen RAD and Imaging Pathways