



MMWR™

Morbidity and Mortality Weekly Report

www.cdc.gov/mmwr

Weekly

April 11, 2008 / Vol. 57 / No. 14

Prevalence of Self-Reported Postpartum Depressive Symptoms — 17 States, 2004–2005

Postpartum depression (PPD) affects 10%–15% of mothers within the first year after giving birth (1). Younger mothers and those experiencing partner-related stress or physical abuse might be more likely to develop PPD (2,3). CDC analyzed data from the Pregnancy Risk Assessment Monitoring System (PRAMS) for 2004–2005 (the most recent data available) to 1) assess the prevalence of self-reported postpartum depressive symptoms (PDS) among mothers by selected demographic characteristics and other possible risk factors for PDS and 2) determine factors that identify mothers most likely to develop PPD. This report summarizes the results of that analysis, which indicated that, during 2004–2005, the prevalence of self-reported PDS in 17 U.S. states* ranged from 11.7% (Maine) to 20.4% (New Mexico). Younger women, those with lower educational attainment, and women who received Medicaid benefits for their delivery were more likely to report PDS. State and local health departments should evaluate the effectiveness of targeting mental health services to these mothers and incorporating messages about PPD into existing programs (e.g., domestic violence services) for women at higher risk.

PRAMS is an ongoing, state-specific, population-based surveillance project that collects self-reported information on maternal attitudes and experiences before, during, and after delivery of a live infant. PRAMS is administered by CDC in collaboration with participating states and cities and is designed to be representative of women in participating states who have delivered during the preceding 2–6 months (4). Response rates were $\geq 70\%$ for 2004 and 2005 in each of the 17 participating states. During 2004–2005,

these 17 states included two questions on self-reported PDS in their PRAMS surveys: 1) “Since your new baby was born, how often have you felt down, depressed, or hopeless?” and 2) “Since your new baby was born, how often have you had little interest or little pleasure in doing things?” The response choices were “always,” “often,” “sometimes,” “rarely,” and “never”; women who said “often” or “always” to either question were classified as experiencing self-reported PDS. Because of their high sensitivity (96%), these two questions have been recommended as a depression case-finding instrument by health professionals (5,6). Chi-square tests were used to test for significant differences ($p < 0.05$) in the proportion of women reporting PDS by demographic characteristics and other possible risk factors for PDS within each of the 17 states; approximate 95% confidence intervals for these proportions were calculated.[†] To measure the strength of the association overall, the median difference across all states in the proportion of women reporting PDS between two levels of each covariate was calculated. Sample

[†] Confidence intervals are approximate because, when adjusting for the clustered survey design, the confidence intervals computed were close to but not equal to $\pm 1.96 \times$ standard error.

*Alaska, Colorado, Georgia, Hawaii, Maryland, Maine, Minnesota, North Carolina, Nebraska, New Mexico, New York (excluding New York City), Oregon, Rhode Island, South Carolina, Utah, Vermont, and Washington.

INSIDE

- 366 Preliminary FoodNet Data on the Incidence of Infection with Pathogens Transmitted Commonly Through Food — 10 States, 2007
- 370 Malnutrition and Micronutrient Deficiencies Among Bhutanese Refugee Children — Nepal, 2007
- 373 Automated Detection and Reporting of Notifiable Diseases Using Electronic Medical Records Versus Passive Surveillance — Massachusetts, June 2006–July 2007
- 376 Notice to Readers
- 377 QuickStats

The *MMWR* series of publications is published by the Coordinating Center for Health Information and Service, Centers for Disease Control and Prevention (CDC), U.S. Department of Health and Human Services, Atlanta, GA 30333.

Suggested Citation: Centers for Disease Control and Prevention. [Article title]. *MMWR* 2008;57:[inclusive page numbers].

Centers for Disease Control and Prevention

Julie L. Gerberding, MD, MPH
Director

Tanja Popovic, MD, PhD
Chief Science Officer

James W. Stephens, PhD
Associate Director for Science

Steven L. Solomon, MD
Director, Coordinating Center for Health Information and Service

Jay M. Bernhardt, PhD, MPH
Director, National Center for Health Marketing

Katherine L. Daniel, PhD
Deputy Director, National Center for Health Marketing

Editorial and Production Staff

Frederic E. Shaw, MD, JD
Editor, MMWR Series

Teresa F. Rutledge
(Acting) Managing Editor, MMWR Series

Douglas W. Weatherwax
Lead Technical Writer-Editor

Donald G. Meadows, MA
Jude C. Rutledge
Writers-Editors

Peter M. Jenkins
(Acting) Lead Visual Information Specialist

Lynda G. Cupell
Malbea A. LaPete
Visual Information Specialists

Quang M. Doan, MBA
Erica R. Shaver
Information Technology Specialists

Editorial Board

William L. Roper, MD, MPH, Chapel Hill, NC, Chairman
Virginia A. Caine, MD, Indianapolis, IN
David W. Fleming, MD, Seattle, WA
William E. Halperin, MD, DrPH, MPH, Newark, NJ
Margaret A. Hamburg, MD, Washington, DC
King K. Holmes, MD, PhD, Seattle, WA
Deborah Holtzman, PhD, Atlanta, GA
John K. Iglehart, Bethesda, MD
Dennis G. Maki, MD, Madison, WI
Sue Mallonee, MPH, Oklahoma City, OK
Stanley A. Plotkin, MD, Doylestown, PA
Patricia Quinlisk, MD, MPH, Des Moines, IA
Patrick L. Remington, MD, MPH, Madison, WI
Barbara K. Rimer, DrPH, Chapel Hill, NC
John V. Rullan, MD, MPH, San Juan, PR
Anne Schuchat, MD, Atlanta, GA
Dixie E. Snider, MD, MPH, Atlanta, GA
John W. Ward, MD, Atlanta, GA

sizes varied for each estimate because women who were missing data on any variable (<5% of all women) were excluded from analysis of that variable. The analysis was conducted using statistical software to adjust for the complex survey design and produce statewide estimates. Estimates based on small sample sizes (fewer than 30 respondents) were considered to be unreliable.

The maternal characteristics analyzed included age at delivery, race/ethnicity, education, marital status, and receipt of Medicaid for delivery. Possible risk factors for PDS included in the analysis were low infant birth weight (<2,500 g), admission to a neonatal intensive-care unit (NICU), number of previous live births, tobacco use during the last 3 months of pregnancy, physical abuse before or during pregnancy, and experiencing emotional, financial, partner-related, or traumatic stress[§] during the 12 months before delivery. Women were considered physically abused if they said that a current or former husband/partner had pushed, hit, slapped, kicked, choked, or physically hurt them in any way during the 12 months before or during the most recent pregnancy. Women who reported smoking one or more cigarettes on an average day were classified as using tobacco during the last 3 months of pregnancy.

During 2004–2005, overall prevalence of self-reported PDS ranged from 11.7% (Maine) to 20.4% (New Mexico) (Table 1). Demographic characteristics significantly associated with PDS in all of the 17 states were maternal age, marital status, maternal education, and Medicaid coverage for delivery. Among the 17 states, the median percentage point difference in PDS prevalence was 13.4 percentage points between the youngest and oldest mothers, 13.6 between the lowest and highest education groups, 9.7 by marital status, and 11.0 by Medicaid receipt. In 13 of the 16 states for which data were available, a significant association was observed between race/ethnicity and PDS, with non-Hispanic white women having a lower prevalence of PDS compared with women of other racial/ethnic groups.

PDS was significantly associated with five possible risk factors in all or nearly all of the 17 states (Table 2). The number of states with significant associations and state

[§] Stressors during pregnancy were categorized as 1) emotional (a very sick family member had to go into the hospital or someone close to the respondent died), 2) financial (the respondent moved to a new address, her husband/partner lost his job, she lost her job, or she had a lot of bills she could not pay); 3) partner-related (the respondent separated or divorced from her husband/partner, she argued more than usual with her husband/partner, or her husband/partner said he did not want her to be pregnant); and 4) traumatic (the respondent was homeless, she was involved in a physical fight, she or her husband/partner went to jail, or someone close to her had a problem with drinking/drugs).

TABLE 1. Prevalence of self-reported postpartum depressive symptoms (PDS), by selected characteristics — Pregnancy Risk Assessment Monitoring System, 17 states, 2004–2005

Characteristic	State*																
	AK % (CI) [†]	CO % (CI)	GA % (CI)	HI % (CI)	MD % (CI)	ME % (CI)	MN % (CI)	NC % (CI)	NE % (CI)	NM % (CI)	NY % (CI)	OR % (CI)	RI % (CI)	SC % (CI)	UT % (CI)	VT % (CI)	WA % (CI)
Sample size	2,671	3,942	3,364	3,805	2,953	2,348	3,070	2,580	3,614	2,559	2,253	3,803	2,887	3,131	3,868	2,173	2,829
PDS	15.7 (±1.8)	14.3 (±1.6)	16.6 (±1.8)	15.7 (±1.2)	15.7 (±2.2)	11.7 (±1.6)	12.7 (±1.6)	19.0 (±2.0)	14.1 (±1.4)	20.4 (±1.6)	14.0 (±2.0)	12.2 (±1.6)	14.0 (±1.6)	19.5 (±2.4)	13.9 (±1.2)	11.8 (±1.4)	13.2 (±1.6)
Age (yrs)																	
<20	25.9 [§] (±6.3)	22.7 [§] (±6.1)	23.8 [§] (±6.1)	25.6 [§] (±5.3)	20.9 [§] (±8.6)	23.7 [§] (±8.2)	23.7 [§] (±7.4)	31.9 [§] (±7.4)	27.4 [§] (±5.7)	25.7 [§] (±4.5)	16.8 [§] (±7.6)	17.2 [§] (±6.3)	22.1 [§] (±5.7)	31.7 [§] (±7.8)	28.0 [§] (±5.3)	25.0 [§] (±7.6)	20.1 [§] (±6.7)
20–24	19.5 (±3.5)	18.3 (±3.7)	24.2 (±3.9)	19.0 (±2.5)	17.8 (±5.3)	16.8 (±3.5)	18.1 (±3.9)	21.4 (±3.9)	15.6 (±2.5)	21.0 (±2.9)	27.7 (±5.9)	14.7 (±3.3)	22.8 (±4.3)	22.4 (±4.5)	13.4 (±2.0)	17.2 (±3.5)	15.3 (±3.7)
25–29	14.3 (±3.1)	15.3 (±3.3)	14.1 (±3.1)	14.4 (±2.2)	19.5 (±4.5)	10.6 (±2.5)	12.6 (±2.7)	17.4 (±3.5)	11.6 (±2.2)	21.9 (±3.1)	10.8 (±3.1)	13.7 (±3.1)	12.9 (±2.9)	19.6 (±4.7)	13.1 (±2.2)	10.4 (±2.5)	15.1 (±3.3)
≥30	10.8 (±2.4)	9.3 (±2.0)	10.4 (±2.4)	12.5 (±1.6)	11.1 (±2.4)	6.6 (±2.0)	8.1 (±2.0)	14.6 (±2.7)	12.2 (±2.2)	14.8 (±2.7)	10.1 (±2.4)	8.0 (±2.0)	9.4 (±1.8)	11.4 (±3.1)	12.4 (±2.4)	8.1 (±1.8)	9.4 (±2.2)
Race/Ethnicity																	
White, non-Hispanic	11.8 [§] (±2.2)	11.6 [§] (±1.8)	13.1 [§] (±2.5)	9.3 [§] (±2.2)	13.4 (±2.7)	11.1 (±1.6)	9.0 [§] (±1.6)	16.1 [§] (±2.4)	11.8 [§] (±1.6)	15.2 [§] (±2.5)	13.2 (±2.2)	10.6 [§] (±2.2)	10.8 [§] (±1.8)	14.6 [§] (±2.7)	12.8 [§] (±1.4)	— ^{††}	10.9 [§] (±2.2)
Black, non-Hispanic	— ^{††}	40.6 (±14.3)	20.6 (±2.4)	— ^{††}	18.6 (±4.1)	— ^{††}	27.3 (±6.5)	26.3 (±4.7)	23.0 (±2.9)	— ^{††}	20.5 (±7.4)	18.5 (±3.1)	30.6 (±6.9)	27.9 (±4.7)	— ^{††}	— ^{††}	18.9 (±3.9)
Hispanic	23.4 (±7.6)	15.9 (±3.3)	19.6 (±6.1)	15.8 (±3.1)	14.8 (±6.3)	— ^{††}	— ^{††}	17.9 (±5.1)	21.0 (±2.9)	22.1 (±2.4)	15.9 (±5.7)	15.8 (±2.4)	19.0 (±3.7)	23.0 (±9.6)	16.7 (±2.7)	— ^{††}	14.2 (±2.7)
Other**	20.5 (±2.7)	— ^{††}	— ^{††}	17.2 (±1.6)	24.3 (±10.2)	— ^{††}	28.5 (±7.8)	— ^{††}	21.0 (±2.5)	25.5 (±5.1)	— ^{††}	16.1 (±2.2)	13.5 (±6.1)	— ^{††}	24.5 (±7.4)	— ^{††}	20.2 (±3.9)
Current marital status																	
Married	11.5 [§] (±2.0)	11.8 [§] (±1.8)	13.0 [§] (±2.2)	13.3 [§] (±1.4)	13.1 [§] (±2.4)	8.5 [§] (±1.6)	9.1 [§] (±1.6)	14.9 [§] (±2.2)	10.8 [§] (±1.4)	16.0 [§] (±2.2)	10.3 [§] (±2.0)	9.6 [§] (±1.8)	10.2 [§] (±1.6)	13.4 [§] (±2.5)	11.5 [§] (±1.2)	9.1 [§] (±1.6)	11.5 [§] (±1.8)
Other	23.5 (±3.3)	21.5 (±3.7)	22.1 (±2.9)	20.4 (±2.4)	20.3 (±4.1)	18.1 (±3.3)	21.2 (±3.5)	25.5 (±3.7)	22.0 (±2.7)	24.9 (±2.5)	21.7 (±4.1)	17.5 (±3.1)	20.7 (±2.9)	27.5 (±4.1)	26.4 (±3.3)	18.4 (±3.1)	17.1 (±3.3)
Education (yrs)																	
<12	28.3 [§] (±5.7)	20.3 [§] (±4.3)	24.9 [§] (±4.5)	24.0 [§] (±4.9)	23.9 [§] (±6.9)	28.0 [§] (±7.3)	26.9 [§] (±6.7)	23.5 [§] (±4.5)	22.6 [§] (±3.5)	26.2 [§] (±3.5)	24.2 [§] (±6.5)	19.9 [§] (±3.9)	22.6 [§] (±4.7)	31.1 [§] (±5.9)	24.5 [§] (±2.7)	25.7 [§] (±6.9)	18.4 [§] (±4.3)
12	16.4 (±2.5)	18.0 (±3.5)	18.3 (±3.1)	18.1 (±2.0)	19.3 (±4.5)	15.2 (±2.9)	15.1 (±3.3)	22.2 (±3.9)	19.0 (±3.1)	21.3 (±2.9)	19.5 (±4.3)	12.5 (±2.9)	18.8 (±3.3)	19.8 (±4.7)	17.6 (±2.2)	15.6 (±2.7)	15.6 (±3.7)
>12	11.0 (±2.4)	9.6 (±1.8)	10.8 (±2.0)	12.1 (±1.4)	12.0 (±2.4)	6.3 (±1.4)	9.0 (±1.6)	15.0 (±2.4)	10.0 (±1.6)	14.9 (±2.4)	9.2 (±2.0)	8.8 (±2.0)	9.0 (±1.6)	14.2 (±2.7)	9.4 (±1.6)	7.5 (±1.4)	10.8 (±2.0)
Medicaid recipient																	
No	10.4 [§] (±2.0)	10.9 [§] (±1.8)	8.9 [§] (±2.0)	12.6 [§] (±1.2)	13.8 [§] (±2.4)	5.9 [§] (±1.4)	8.4 [§] (±1.6)	13.0 [§] (±2.4)	9.7 [§] (±1.6)	15.5 [§] (±2.4)	10.4 [§] (±2.0)	7.9 [§] (±1.8)	12.9 [§] (±1.6)	10.8 [§] (±2.7)	9.9 [§] (±1.4)	7.3 [§] (±1.4)	8.8 [§] (±2.0)
Yes	21.4 (±2.7)	20.6 (±3.1)	22.7 (±2.5)	22.4 (±2.5)	20.1 (±4.3)	18.9 (±2.9)	20.8 (±3.3)	24.0 (±2.9)	20.2 (±2.2)	24.1 (±2.4)	21.3 (±3.9)	17.5 (±2.7)	23.9 (±5.9)	25.8 (±3.5)	21.1 (±2.2)	19.2 (±2.7)	17.9 (±2.5)

* AK = Alaska, CO = Colorado, GA = Georgia, HI = Hawaii, MD = Maryland, ME = Maine, MN = Minnesota, NC = North Carolina, NE = Nebraska, NM = New Mexico, NY = New York (excluding New York City), OR = Oregon, RI = Rhode Island, SC = South Carolina, UT = Utah, VT = Vermont, and WA = Washington.

† 95% confidence interval. Confidence intervals are approximate because, when adjusting for the clustered survey design, the confidence intervals computed were close to but not equal to $\pm 1.96 \times$ standard error.

§ $p < 0.05$ by chi-square test.

†† Insufficient sample size (based on fewer than 30 respondents).

** Includes Asian/Pacific Islander, American Indian/Alaska Native, and other/multiple race/ethnicity.

††† Vermont did not include information on race/ethnicity.

median percentage point differences in PDS prevalence for women with and without these risk factors were using tobacco during the last 3 months of pregnancy (16 states; median difference: 10.7), physical abuse before or during pregnancy (17 states; median difference: 22.4), partner-related stress during pregnancy (17 states; median difference: 16.4), traumatic stress during pregnancy (17 states; median difference: 16.4), and financial stress during pregnancy (17 states; median difference: 9.2). In 14 states, PDS

was significantly associated with delivering a low birth weight infant and experiencing emotional stress during pregnancy. NICU admission was associated with PDS in nine states. The state median percentage point differences in PDS prevalence were 5.7 by low birth weight delivery, 5.2 by emotional stress, and 6.2 by NICU admission. The effect of parity on PDS was unclear; the association was significant in only two states, and the results were inconsistent across all states regarding risk for developing PDS.

TABLE 2. Prevalence of self-reported postpartum depressive symptoms (PDS), by selected risk factors — Pregnancy Risk Assessment Monitoring System, 17 states, 2004–2005

Risk factor	State*																
	AK % (CI) [†]	CO % (CI)	GA % (CI)	HI % (CI)	MD % (CI)	ME % (CI)	MN % (CI)	NC % (CI)	NE % (CI)	NM % (CI)	NY % (CI)	OR % (CI)	RI % (CI)	SC % (CI)	UT % (CI)	VT % (CI)	WA % (CI)
PDS	15.7 (±1.8)	14.3 (±1.6)	16.6 (±1.8)	15.7 (±1.2)	15.7 (±2.2)	11.7 (±1.6)	12.7 (±1.6)	19.0 (±2.0)	14.1 (±1.4)	20.4 (±1.6)	14.0 (±2.0)	12.2 (±1.6)	14.0 (±1.6)	19.5 (±2.4)	13.9 (±1.2)	11.8 (±1.4)	13.2 (±1.6)
Low birth weight (<2,500 g)																	
No	15.4 [§] (±1.8)	13.9 [§] (±1.8)	15.9 [§] (±2.0)	15.3 (±1.2)	15.1 [§] (±2.4)	11.2 [§] (±1.6)	12.6 (±1.6)	18.3 [§] (±2.2)	13.7 [§] (±1.4)	19.9 [§] (±1.8)	13.5 [§] (±2.0)	11.8 [§] (±1.6)	13.5 [§] (±1.6)	18.8 [§] (±2.5)	13.5 [§] (±1.2)	11.3 [§] (±1.6)	13.2 (±1.8)
Yes	21.1 (±1.6)	18.4 (±2.2)	23.7 (±2.7)	20.2 (±5.1)	22.3 (±2.5)	16.7 (±2.0)	14.8 (±7.4)	25.5 (±2.5)	20.3 (±6.3)	25.6 (±6.5)	20.5 (±2.7)	19.7 (±3.3)	18.4 (±1.2)	24.2 (±2.4)	19.0 (±2.4)	19.6 (±1.8)	14.2 (±6.3)
Tobacco use during pregnancy																	
No	14.3 [§] (±1.8)	13.2 [§] (±1.8)	14.4 [§] (±1.8)	14.6 [§] (±1.2)	14.4 [§] (±2.2)	9.1 [§] (±1.6)	11.1 [§] (±1.6)	17.2 [§] (±2.0)	12.9 [§] (±1.4)	19.1 [§] (±1.8)	12.1 [§] (±1.8)	10.9 [§] (±1.6)	12.8 [§] (±1.6)	18.6 (±2.4)	12.7 [§] (±1.2)	10.4 [§] (±1.4)	12.4 [§] (±1.6)
Yes	21.6 (±4.3)	24.6 (±5.7)	35.7 (±7.6)	27.0 (±5.3)	26.4 (±8.0)	22.4 (±4.7)	19.5 (±4.7)	27.9 (±5.9)	21.9 (±4.7)	33.1 (±6.5)	28.2 (±7.3)	18.3 (±5.7)	22.9 (±5.5)	25.7 (±7.4)	31.6 (±6.3)	19.5 (±4.5)	22.5 (±8.0)
Neonatal intensive-care unit admission																	
No	15.1 (±1.8)	14.0 (±1.8)	15.2 [§] (±1.8)	14.9 [§] (±1.2)	15.3 (±2.4)	11.3 (±1.6)	11.7 [§] (±1.6)	18.2 [§] (±2.0)	13.2 [§] (±1.4)	20.1 (±1.8)	13.3 [§] (±2.0)	11.2 [§] (±1.6)	13.5 (±1.6)	18.6 [§] (±2.5)	13.8 (±1.4)	11.2 [§] (±1.6)	12.8 (±1.8)
Yes	19.8 (±4.5)	17.0 (±4.3)	26.4 (±5.5)	21.1 (±4.5)	17.6 (±5.1)	15.4 (±4.5)	21.1 (±6.5)	27.8 (±6.1)	20.1 (±4.5)	23.3 (±5.7)	20.0 (±5.3)	19.0 (±5.5)	17.5 (±4.3)	25.9 (±6.7)	14.6 (±3.1)	19.2 (±5.1)	16.1 (±4.9)
Previous live births																	
0	16.1 (±2.7)	12.7 (±2.4)	16.6 (±2.7)	16.8 (±1.8)	14.0 (±3.1)	12.6 (±2.4)	12.1 (±2.4)	16.7 (±2.7)	14.3 [§] (±2.2)	20.1 (±2.7)	13.9 (±2.7)	12.4 (±2.5)	13.4 (±2.2)	19.5 (±3.5)	12.0 (±2.0)	10.9 (±2.0)	10.0 [§] (±2.2)
1–2	15.9 (±2.5)	15.7 (±2.5)	16.2 (±2.4)	14.8 (±1.8)	15.6 (±2.9)	10.6 (±2.2)	12.5 (±2.2)	19.8 (±2.9)	12.8 (±1.8)	19.5 (±2.4)	13.8 (±2.7)	11.7 (±2.2)	13.4 (±2.2)	18.7 (±3.3)	14.9 (±1.8)	12.1 (±2.0)	14.5 (±2.5)
≥3	14.0 (±3.7)	15.1 (±5.7)	19.3 (±5.9)	15.3 (±3.5)	22.7 (±7.1)	— [¶]	15.9 (±5.5)	24.5 (±6.7)	19.8 (±4.3)	25.3 (±5.3)	17.0 (±6.9)	14.0 (±4.9)	19.9 (±5.7)	24.3 (±9.8)	14.4 (±2.9)	— [¶]	17.8 (±5.7)
Physical abuse before or during pregnancy																	
No	14.0 [§] (±1.8)	12.8 [§] (±1.6)	15.3 [§] (±1.8)	14.6 [§] (±1.2)	13.5 [§] (±2.2)	10.5 [§] (±1.6)	11.5 [§] (±1.6)	17.4 [§] (±2.0)	12.6 [§] (±1.4)	18.2 [§] (±1.8)	13.0 [§] (±1.8)	10.7 [§] (±1.6)	12.9 [§] (±1.6)	17.0 [§] (±2.4)	12.3 [§] (±1.2)	9.7 [§] (±1.4)	12.1 [§] (±1.6)
Yes	36.6 (±8.0)	41.3 (±10.6)	35.6 (±8.2)	33.7 (±6.3)	39.9 (±10.8)	35.9 (±10.8)	30.8 (±8.8)	39.2 (±9.4)	33.9 (±6.9)	40.6 (±6.3)	32.3 (±11.2)	30.9 (±10.8)	36.6 (±9.8)	52.7 (±10.8)	44.7 (±7.6)	33.9 (±10.2)	33.1 (±9.2)
Stressors during pregnancy**																	
Emotional																	
No	14.1 [§] (±2.0)	13.9 (±2.0)	14.4 [§] (±2.2)	14.2 [§] (±1.4)	15.1 (±2.5)	10.4 [§] (±1.8)	12.2 (±1.8)	16.6 [§] (±2.4)	12.6 [§] (±1.4)	18.4 [§] (±2.0)	12.5 [§] (±2.2)	10.5 [§] (±1.8)	12.8 [§] (±1.8)	16.5 [§] (±2.7)	12.3 [§] (±1.4)	10.3 [§] (±1.6)	11.6 [§] (±1.8)
Yes	19.4 (±3.3)	16.0 (±3.1)	21.7 (±3.3)	19.7 (±2.5)	17.1 (±3.9)	13.8 (±2.7)	13.8 (±2.9)	22.9 (±3.5)	17.3 (±2.5)	25.0 (±3.3)	17.0 (±3.5)	15.4 (±3.5)	16.7 (±2.9)	24.9 (±4.3)	17.5 (±2.5)	15.5 (±2.9)	17.3 (±3.5)
Financial																	
No	10.5 [§] (±2.0)	9.3 [§] (±2.2)	9.4 [§] (±2.0)	12.4 [§] (±1.4)	10.8 [§] (±2.4)	6.1 [§] (±1.6)	7.7 [§] (±1.8)	12.9 [§] (±2.4)	10.0 [§] (±1.6)	14.7 [§] (±2.2)	9.5 [§] (±2.2)	8.6 [§] (±2.0)	10.1 [§] (±1.8)	14.2 [§] (±3.1)	8.6 [§] (±1.6)	7.5 [§] (±1.6)	9.8 [§] (±2.2)
Yes	19.5 (±2.5)	18.6 (±2.4)	24.1 (±2.9)	19.4 (±2.0)	21.2 (±3.5)	16.4 (±2.4)	18.4 (±2.7)	23.8 (±2.9)	17.7 (±2.0)	25.8 (±2.5)	18.3 (±2.9)	14.6 (±2.4)	18.1 (±2.4)	24.2 (±3.5)	17.8 (±1.8)	16.4 (±2.4)	16.1 (±2.4)
Partner-related																	
No	10.8 [§] (±1.8)	9.7 [§] (±1.6)	9.2 [§] (±1.6)	10.8 [§] (±1.2)	11.5 [§] (±2.2)	7.4 [§] (±1.6)	8.1 [§] (±1.4)	12.7 [§] (±2.0)	9.8 [§] (±1.4)	13.1 [§] (±1.8)	9.1 [§] (±1.8)	7.9 [§] (±1.6)	9.1 [§] (±1.4)	9.6 [§] (±2.2)	8.6 [§] (±1.2)	7.5 [§] (±1.4)	8.5 [§] (±1.6)
Yes	26.2 (±3.7)	26.3 (±3.7)	32.8 (±3.9)	26.2 (±2.5)	25.3 (±4.5)	21.7 (±3.5)	26.1 (±4.1)	31.7 (±4.1)	24.1 (±2.9)	34.9 (±3.3)	25.5 (±4.3)	21.8 (±3.9)	25.4 (±3.5)	36.2 (±4.7)	29.3 (±3.1)	23.6 (±3.5)	25.5 (±4.1)
Traumatic																	
No	12.4 [§] (±1.8)	12.9 [§] (±1.8)	13.1 [§] (±1.8)	13.7 [§] (±1.2)	13.0 [§] (±2.2)	9.7 [§] (±1.6)	10.1 [§] (±1.6)	16.0 [§] (±2.0)	11.7 [§] (±1.4)	15.6 [§] (±1.8)	10.8 [§] (±1.8)	9.1 [§] (±1.6)	11.2 [§] (±1.6)	16.1 [§] (±2.4)	11.2 [§] (±1.2)	8.7 [§] (±1.4)	11.4 [§] (±1.8)
Yes	25.7 (±4.1)	22.8 (±4.7)	31.3 (±5.1)	27.0 (±3.9)	29.6 (±6.7)	21.6 (±4.7)	25.3 (±4.9)	32.4 (±5.5)	24.9 (±3.9)	35.9 (±4.1)	30.1 (±6.7)	22.0 (±4.7)	29.5 (±5.1)	35.1 (±6.5)	28.8 (±3.9)	26.9 (±4.9)	20.8 (±4.7)

* AK = Alaska, CO = Colorado, GA = Georgia, HI = Hawaii, MD = Maryland, ME = Maine, MN = Minnesota, NC = North Carolina, NE = Nebraska, NM = New Mexico, NY = New York (excluding New York City), OR = Oregon, RI = Rhode Island, SC = South Carolina, UT = Utah, VT = Vermont, and WA = Washington.

† 95% confidence interval. Confidence intervals are approximate because, when adjusting for the clustered survey design, the confidence intervals computed were close to but not equal to $\pm 1.96 \times$ standard error.

§ p < 0.05 by chi-square test.

¶ Insufficient sample size (based on fewer than 30 respondents).

** Stressors during pregnancy were categorized as 1) emotional (a very sick family member had to go into the hospital or someone close to the respondent died), 2) financial (the respondent moved to a new address, her husband/partner lost his job, she lost her job, or she had a lot of bills she could not pay); 3) partner-related (the respondent separated or divorced from her husband/partner, she argued more than usual with her husband/partner, or her husband/partner said he did not want her to be pregnant); and 4) traumatic (the respondent was homeless, she was involved in a physical fight, she or her husband/partner went to jail, or someone close to her had a problem with drinking/drugs).

Reported by: *K Brett, PhD, Office of Analysis and Epidemiology, National Center for Health Statistics; W Barfield, MD, Div of Reproductive Health, National Center for Chronic Disease Prevention and Health Promotion; C Williams, ScD, EIS Officer, CDC.*

Editorial Note: The continuum of depressive disorders after delivery ranges from “baby blues” to PPD. Although “baby blues” is more prevalent, the symptoms of this disorder, which occur within the first few weeks after delivery, are less severe and do not require treatment. PPD can occur up to a year after delivery, is more severe, and requires treatment by a physician. PPD has important consequences for the well-being of mothers and their children. For example, in a 2006 study, mothers who reported depressive symptoms were less likely to engage in practices to promote child development, such as playing with their infant (7). PPD also might also be associated with discontinuation of breastfeeding (8).

The significant associations between PDS and young maternal age and experiencing partner-related stress or physical abuse indicated in this report are consistent with previous research (2,3). The other significant risk factors for PDS described in this report (i.e., delivery of a low birth weight infant, tobacco use during pregnancy, and experiencing traumatic or financial stress) have not been previously identified as significant factors (3). The associations are not unexpected, given that these risk factors all can be considered either actual stressors or indicators of stress during pregnancy. Further research is needed to examine the relationship between stressors during pregnancy and PDS. Association of PDS with other potential postpartum stressors, such as NICU admission and parity, were not consistent across states and also warrant further study.

The findings in this report are subject to at least four limitations. First, data from the PRAMS survey are based on self-report and are not confirmed by physician diagnosis. The screening questions used in the survey have a low specificity (66%) which, although similar to that of other depression screening instruments, might produce a high rate of false positives, leading to overestimates of PPD prevalence (5). Second, mothers were asked about symptoms experienced since birth, so the duration of time about which symptoms are reported ranged from 2 to 6 months. Some women might have been misclassified as experiencing PDS because of depressive symptoms that were not associated with being postpartum, whereas others might have been misclassified because they developed PDS after the interview. However, these possible misclassifications should not differentially affect subgroups of women and, therefore, should not affect the associations identified in this report.

Third, additional variables of interest, such as alcohol or illicit drug use, could not be analyzed because of limited sample sizes across all states. Finally, the analysis described in this report could not identify women with preexisting depression who might or might not also have reported PDS. These women might have been classified as experiencing PDS but might have required different interventions to address their condition than other women without a history of depression. A study conducted by a health maintenance organization found that 54.2% of women with PPD also had been diagnosed with depression either before or during their most recent pregnancy (9).

The findings in this report can be used to estimate the number of women in each state requiring a more complete evaluation (and thus the potential burden on health-care services for those with suspected PPD). Although some states (e.g., Maryland) have already implemented methods for addressing PPD, more targeted screening and interventions for PPD could be directed at women at higher risk for developing PPD and incorporated into existing public health programs (e.g., those that address women who were physically abused). These women also could be more effectively targeted for public health interventions developed according to state and local needs and resources. Adolescent mothers or women who received Medicaid for their delivery are examples of subsets of the population at increased risk for developing PPD that could be easily identified at delivery for interventions in the postpartum period.

The American College of Obstetricians and Gynecologists includes screening for PPD among the essential parts of a women’s 4–6 week postpartum visit. Postpartum women also can be screened for PPD by pediatricians at their infants’ well-child visits (10). Women who are considered to have self-reported PDS based on these screenings should be administered a full diagnostic interview because they are most likely to develop PPD. State and local health departments and other health-care providers can use these screening results in their maternal and child health needs assessments and in planning for the provision of appropriate mental health services to new mothers. Additionally, the effectiveness of targeting services to mothers at higher risk for PPD should be evaluated.

Acknowledgments

The findings in this report are based on contributions by members of the PRAMS Working Group and the CDC PRAMS Team, Div of Reproductive Health, National Center for Chronic Disease Prevention and Health Promotion, CDC.

References

1. O'Hara MW, Swain AM. Rates and risk of postpartum depression-A meta-analysis. *Int Rev Psychiatry* 1996;8:37-54.
2. Schmidt RM, Wiemann CM, Rickert VI, Smith EO. Moderate to severe depressive symptoms among adolescent mothers followed four years postpartum. *J Adolesc Health* 2006;38:712-8.
3. Gross KH, Wells CS, Radigan-Garcia A, Dietz PM. Correlates of self-reports of being very depressed in the months after delivery: results from the Pregnancy Risk Assessment Monitoring System. *Matern Child Health J* 2002;6:247-53.
4. Shulman HB, Gilbert BC, Lansky A. The Pregnancy Risk Assessment Monitoring System (PRAMS): current methods and evaluation of 2001 response rates. *Public Health Rep* 2006;121:74-83.
5. Whooley MA, Avins AL, Miranda J, Browner WS. Case-finding instruments for depression. Two questions are as good as many. *J Gen Intern Med* 1997;12:439-45.
6. Berg AO. Screening for depression: recommendations and rationale. *Am J Nurs* 2002;102:77-80.
7. McLearn KT, Minkovitz CS, Strobino DM, Marks E, Hou W. Maternal depressive symptoms at 2 to 4 months post partum and early parenting practices. *Arch Pediatr Adolesc Med* 2006;160:279-84.
8. Taveras EM, Capra AM, Braveman PA, Jensvold NG, Escobar GJ, Lieu TA. Clinician support and psychosocial risk factors associated with breastfeeding discontinuation. *Pediatrics* 2003;112:108-15.
9. Dietz PM, Williams SB, Callaghan WM, Bachman DJ, Whitlock EP, Hornbrook MC. Clinically identified maternal depression before, during, and after pregnancies ending in live births. *Am J Psychiatry* 2007; 164:1515-20.
10. Chaudron LH, Szilagyi PG, Campbell AT, Mounts KO, McInerney TK. Legal and ethical considerations: risks and benefits of postpartum depression screening at well-child visits. *Pediatrics* 2007;119:123-8.

Preliminary FoodNet Data on the Incidence of Infection with Pathogens Transmitted Commonly Through Food — 10 States, 2007

The Foodborne Diseases Active Surveillance Network (FoodNet) of CDC's Emerging Infections Program collects data from 10 U.S. states* regarding diseases caused by pathogens commonly transmitted through food. FoodNet quantifies and monitors the incidence of these infections by conducting active, population-based surveillance for laboratory-confirmed infections (1). This report describes preliminary surveillance data for 2007 and compares them with data for previous years. In 2007, the estimated incidence of infections caused by *Campylobacter*, *Listeria*, Shiga toxin-producing *Escherichia coli* O157 (STEC O157), *Salmonella*, *Shigella*, *Vibrio*, and *Yersinia* did not change significantly, and *Cryptosporidium* infections increased compared with 2004-2006. Progress toward the targets

for Healthy People 2010 national health objectives and targets (2) regarding the incidence of foodborne infections occurred before 2004; however, none of the targets were reached in 2007. *Salmonella* incidence was the furthest from its national health target, suggesting that reaching this target will require new approaches.

Surveillance Methods

In 1996, FoodNet began active, population-based surveillance for laboratory-confirmed cases of infection caused by *Campylobacter*, *Listeria*, *Salmonella*, STEC O157, *Shigella*, *Vibrio*, and *Yersinia*. FoodNet added surveillance for cases of *Cryptosporidium* and *Cyclospora* infection in 1997 and STEC non-O157 infection in 2000. In 2004, FoodNet began collecting data regarding which laboratory-confirmed infections were associated with outbreaks.

Infection with STEC O157 can cause hemolytic uremic syndrome (HUS), a complication in which the kidneys fail. HUS surveillance, which began in 2000, is conducted in nine states through a network of pediatric nephrologists and infection-control practitioners and validated through review of hospital discharge data. Because of the time required for review of hospital records, this report contains preliminary HUS data for 2006.

During 1996-2007, the FoodNet surveillance population increased from 14.3 million persons (5% of the U.S. population) in five states to 45.5 million persons (15% of the U.S. population) in 10 states. The preliminary incidence for 2007 was calculated by dividing the number of laboratory-confirmed infections by population estimates for 2006. Final incidence will be reported when population estimates for 2007 are available from the U.S. Census Bureau. In previous years, final incidence has been comparable to preliminary incidence.

Surveillance Data

In 2007, a total of 17,883 laboratory-confirmed cases of infection in FoodNet surveillance areas were identified. The number of cases and incidence per 100,000 population were reported as follows: *Salmonella* (6,790; 14.92), *Campylobacter* (5,818; 12.79), *Shigella* (2,848; 6.26), *Cryptosporidium* (1,216; 2.67), STEC O157 (545; 1.20), STEC non-O157 (260; 0.57), *Yersinia* (163; 0.36), *Listeria* (122; 0.27), *Vibrio* (108; 0.24), and *Cyclospora* (13; 0.03). Substantial variation occurred across surveillance sites (Table). The highest incidence per 100,000 population for *Salmonella* (62.11), *Shigella* (27.77), *Campylobacter* (24.01), and STEC O157 (3.66) infections was among children aged <5 years. In 2006, FoodNet identified 82 cases of

* Connecticut, Georgia, Maryland, Minnesota, New Mexico, Oregon, Tennessee, and selected counties in California, Colorado, and New York.

TABLE. Incidence* of laboratory-confirmed bacterial and parasitic infections in 2007 and postdiarrheal hemolytic uremic syndrome (HUS) in 2006, by site and pathogen, compared with national health objectives† — Foodborne Diseases Active Surveillance Network, United States

Pathogen	California	Colorado	Connecticut	Georgia	Maryland	Minnesota	New Mexico	New York	Oregon	Tennessee	Overall	National health objective
Bacteria												
<i>Campylobacter</i>	28.21	15.85	14.01	7.29	7.19	17.51	17.55	11.98	19.02	7.39	12.79	12.30
<i>Listeria</i>	0.25	0.34	0.34	0.33	0.27	0.14	0.20	0.26	0.24	0.26	0.27	0.24
<i>Salmonella</i>	14.29	11.99	12.27	21.78	15.33	13.74	14.38	12.09	8.65	14.13	14.92	6.80
<i>Shigella</i>	5.55	3.00	1.26	17.39	1.91	4.61	5.42	0.89	1.78	6.01	6.26	N/A [§]
STEC [¶] O157	1.21	1.21	1.28	0.50	0.39	3.19	0.46	1.35	1.97	0.91	1.20	1.00
STEC non-O157	0.22	2.12	0.74	0.44	0.46	0.74	1.28	0.28	0.14	0.40	0.57	N/A
<i>Vibrio</i>	0.37	0.15	0.46	0.25	0.45	0.15	0.00	0.21	0.22	0.05	0.24	N/A
<i>Yersinia</i>	0.47	0.15	0.51	0.46	0.14	0.45	0.20	0.37	0.51	0.22	0.36	N/A
Parasites												
<i>Cryptosporidium</i>	1.24	3.87	1.20	2.45	0.57	5.81	6.14	2.07	3.51	2.19	2.67	N/A
<i>Cyclospora</i>	0.03	0.00	0.09	0.03	0.02	0.00	0.10	0.05	0.00	0.02	0.03	N/A
HUS**	2.36	2.50	1.48	1.00	0.81	2.32	—	0.43	2.60	5.02	2.01	0.90
Surveillance population (millions)	3.23	2.64	3.50	9.36	5.62	5.17	1.95	4.29	3.70	6.04	45.50	

* Per 100,000 population.

† Healthy People 2010 objective 10 targets for incidence of *Campylobacter*, *Salmonella*, and Shiga toxin-producing *Escherichia coli* O157 infections and HUS for 2010 and for incidence of *Listeria* infections for 2005 and 2010, as revised by midcourse review.

§ No national health objective exists for these pathogens.

¶ Shiga toxin-producing *Escherichia coli*.

** Incidence of postdiarrheal HUS in children aged <5 years; denominator is surveillance population aged <5 years in sites that conduct hospital discharge data review.

postdiarrheal HUS in persons aged <18 years (0.78 cases per 100,000 children); 58 (0.7%) cases occurred in children aged <5 years (2.01 cases per 100,000 children).

Of the 6,299 (92.8%) *Salmonella* isolates serotyped, seven serotypes accounted for 61.6% of infections: Enteritidis, 1,062 (16.9%); Typhimurium, 1,006 (16.0%); Newport, 656 (10.4%); I 4,[5],12:i-, 358 (5.7%); Javiana, 347 (5.5%); Heidelberg, 243 (3.9%); and Montevideo, 211 (3.4%). Among 102 (94.4%) *Vibrio* isolates for which the species was identified, 59 (57.8%) were *parahaemolyticus*, 18 (17.7%) were *alginolyticus*, and 13 (12.8%) were *vulnificus*. Among 260 STEC non-O157 isolates tested for O antigen determination, 228 (87.7%) had an identifiable O antigen, primarily O26 (21.5%), O103 (20.6%), or O121 (19.3%).

Comparison with Previous Years

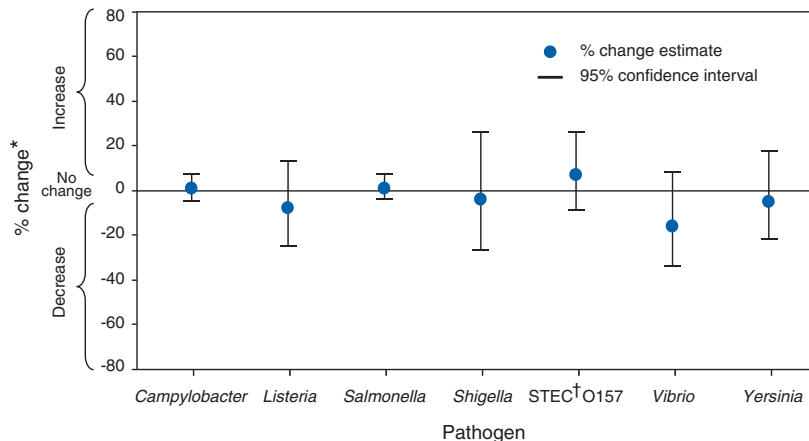
A main-effects, log-linear Poisson regression model (negative binomial) was used to estimate statistically significant changes in incidence of infections in 2007 compared with previous years. This model accounts for the increase in the surveillance population and for variations in incidence among sites (1). The average annual incidence for 2004–2006 and for 1996–1998 (1997–1998 for *Cryptosporidium*), the first years of surveillance, were used for comparison.

The estimated change in incidence (relative rate) between 2007 and the comparison periods was calculated, along with 95% confidence intervals (CIs). For HUS surveillance, 2000–2001, the first years of surveillance, was used as the comparison period. Changes over time have not been analyzed for non-O157 STEC, partly because changes in clinical laboratory practices might have affected incidence reporting (3).

The estimated incidence of *Campylobacter*, *Listeria*, *Salmonella*, *Shigella*, STEC O157, *Vibrio*, and *Yersinia* infections (Figure 1) did not change significantly in 2007 compared with 2004–2006, but the estimated incidence of *Cryptosporidium* infections increased 44% (CI = 8%–91%). Among the seven most common *Salmonella* serotypes, the incidence of Typhimurium and Heidelberg decreased, I 4,[5],12:i- and Newport increased, and the others did not change significantly.

In comparison with 1996–1998, relative rates of *Yersinia* decreased 49% (CI = 36%–59%), *Listeria* decreased 42% (CI = 28%–54%), *Shigella* decreased 36% (CI = 9%–55%), *Campylobacter* decreased 31% (CI = 25%–36%), STEC O157 decreased 25% (CI = 9%–38%), and *Salmonella* decreased 8% (CI = 1%–14%) in 2007 (Figure 2). The estimated incidence of infection with *Cryptosporidium* and *Vibrio* did not change significantly. The incidence of

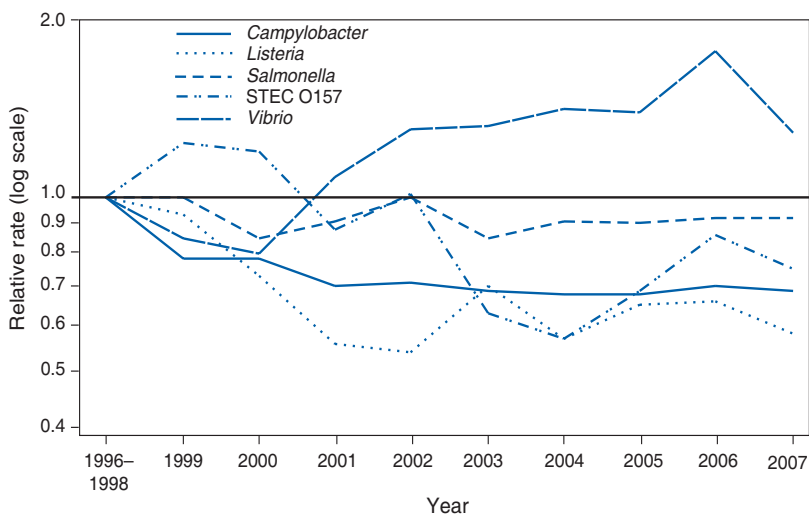
FIGURE 1. Percentage change in incidence of laboratory-confirmed bacterial infections in 2007 compared with 2004–2006, by pathogen — Foodborne Diseases Active Surveillance Network, United States



* No significant change = 95% confidence interval is both above and below the no change line; significant increase = estimate and entire 95% confidence interval are above the no change line; significant decrease = estimate and entire 95% confidence interval are below the no change line.

† Shiga toxin-producing *Escherichia coli*.

FIGURE 2. Relative rates of laboratory-confirmed infections with *Campylobacter*, STEC* O157, *Listeria*, *Salmonella*, and *Vibrio* compared with 1996–1998 rates, by year — Foodborne Diseases Active Surveillance Network, United States, 1996–2007†



* Shiga toxin-producing *Escherichia coli*.

† The position of each line indicates the relative change in the incidence of that pathogen compared with 1996–1998. The actual incidences of these infections can differ.

postdiarrheal HUS has paralleled that of STEC O157, declining in 2003 and 2004, followed by increases the next 2 years. The estimated incidence of postdiarrheal HUS in children aged <5 years in 2006 did not change significantly compared with 2000–2001.

Outbreak-Associated Cases of Infection

In 2007, outbreak-associated infections accounted for 86 (15.8%) of STEC O157 cases and 364 (5.4%) of *Salmonella* cases ascertained, similar to proportions in previous years. Four large multistate outbreaks of *Salmonella* infections that included FoodNet sites were investigated in 2007: an outbreak of *S. Tennessee* infections caused by contaminated peanut butter (4), an outbreak of *S. I 4,[5],12:i:-* infections caused by contaminated frozen pot pies, an outbreak of *S. Wandsworth* and *S. Typhimurium* infections attributed to a puffed vegetable snack, and an outbreak of *S. Paratyphi B* var. *Java* associated with exposure to turtles (5).

Reported by: D Vugia, MD, California Dept of Public Health. A Cronquist, MPH, Colorado Dept of Public Health and Environment. J Hadler, MD, Connecticut Dept of Public Health. M Tobin-D'Angelo, MD, Div of Public Health, Georgia Dept of Human Resources. D Blythe, MD, Maryland Dept of Health and Mental Hygiene. K Smith, DVM, Minnesota Dept of Health. S Lathrop, PhD, New Mexico Dept of Health. D Morse, MD, New York State Dept of Health. P Cieslak, MD, Oregon Public Health Div. J Dunn, DVM, Tennessee Dept of Health. PL White, DVM, Food Safety and Inspection Svc, US Dept of Agriculture. JJ Guzewich, MPH, Center for Food Safety and Applied Nutrition, Food and Drug Admin. OL Henao, PhD, RM Hoekstra, PhD, E Scallan, PhD, FJ Angulo, DVM, PM Griffin, MD, RV Tauxe, MD, Div of Foodborne, Bacterial and Mycotic Diseases, National Center for Zoonotic, Vector-Borne and Enteric Diseases; C Barton Behravesh, DVM, EIS Officer, CDC.

Editorial Note: Although significant declines in the incidence of certain foodborne pathogens have occurred since 1996, these declines all occurred before 2004. Comparing 2007 with 2004–2006, the estimated incidence of infections caused by *Campylobacter*, *Listeria*, *Salmonella*, *Shigella*, STEC O157, *Vibrio*, and *Yersinia* did not decline significantly, and the incidence of *Cryptosporidium* infections increased. The incidence of *Salmonella* infections in 2007 (14.92 cases per 100,000) was the furthest from

the national target for 2010 (6.80 cases), and only infections caused by *Salmonella* serotypes Typhimurium and Heidelberg declined significantly.

Salmonella organisms live in the intestines of most food animals. Transmission of *Salmonella* to humans can occur by many routes, including consumption of food animal products or raw produce contaminated with animal waste, contact with animals and their environment, and contaminated water. Outbreaks caused by contaminated peanut butter, frozen pot pies, and a puffed vegetable snack in 2007 underscore the need to prevent contamination of commercially produced products. The outbreak associated with turtle exposure highlights the importance of animals as a nonfood source of human infections. To reduce the incidence of *Salmonella* infections, concerted efforts are needed throughout the food supply chain, from farm to processing plant to kitchen. Recognizing the need to prevent *Salmonella* contamination of poultry products and other meats, the U.S. Department of Agriculture's Food Safety and Inspection Service (USDA FSIS) launched a *Salmonella* initiative in 2006, with enhancements in 2008 (5). A USDA FSIS testing program reported recent declines in the percentage of broiler chicken carcasses that yielded *Salmonella*, from 16.3% in 2005 to 11.4% in 2006 and 8.5% in 2007 (7).

Declines in the incidence of STEC O157 infections in 2003 and 2004 have not been maintained. Although the USDA FSIS and the beef processing industry have implemented interventions to reduce ground beef contamination, 21 beef product recalls for possible contamination with STEC O157 were issued in 2007, of which 10 were illness associated, an increase compared with previous years. USDA FSIS launched an STEC O157 initiative in fall 2007 and hosted a public meeting in spring 2008 to explore solutions to the challenges this pathogen presents.[†] Additional efforts are needed to control STEC O157 in cattle and to prevent its spread to other food animals and food products, such as produce.

The increase in reported *Cryptosporidium* infections compared with 2004–2006 might reflect an increase in diagnostic testing stimulated by licensing of a new treatment (nitazoxanide). The incidence of *Campylobacter*, *Salmonella*, *Shigella*, and STEC O157 infections remains highest among children aged <5 years, highlighting the need for targeted interventions. Identified risk factors for bacterial enteric illness in young children include riding in a shopping cart next to raw meat or poultry, attendance at day care,

visiting or living on a farm, and living in a home with a reptile (8,9). Recent *Salmonella* outbreaks associated with exposure to small turtles (carapace lengths of <4 inches) highlight the importance of enforcing a 1975 prohibition on their sale and distribution in the United States (5).

The findings in this report are subject to at least four limitations. First, FoodNet relies on laboratory diagnoses, and changing laboratory practices might affect the reported incidence for some pathogens, especially STEC. Second, many foodborne illnesses (e.g., norovirus) are not reported to FoodNet. Third, differences in health-care seeking behaviors might contribute to a higher incidence of reported illnesses in certain age groups (e.g., young children). Finally, although the FoodNet population is similar to the U.S. population, the findings might not be generalizable (1).

Enhanced measures are needed to understand the complex ecologies that link pathogens to animals and plants; to control or eliminate pathogens in food sources; to reduce or prevent contamination during food growing, harvesting, and processing; and to educate restaurant workers and consumers about infection risks and prevention measures. Such measures can be more focused when the sources of human infections are known. More outbreaks can be recognized through more rapid and complete subtyping of pathogens and interviewing of ill persons and controls when clusters of illness are recognized.

Consumers can reduce their risk for foodborne illness by following safe food-handling and preparation recommendations and avoiding unsafe foods. Information on food safety practices is available at <http://www.foodsafety.gov>, <http://www.fightbac.org>, and http://www.cdc.gov/healthy_pets.

References

1. Scallan E. Activities, achievements, and lessons learned during the first 10 years of the Foodborne Diseases Active Surveillance Network: 1996–2005. *Clin Infect Dis* 2007;44:718–25.
2. US Department of Health and Human Services. Healthy people 2010. Washington, DC: US Department of Health and Human Services; 2000. Available at <http://www.healthypeople.gov>.
3. CDC. Laboratory-confirmed non-O157 Shiga toxin-producing *Escherichia coli*—Connecticut, 2000–2005. *MMWR* 2007;56:29–31.
4. CDC. Multistate outbreak of *Salmonella* serotype Tennessee infections associated with peanut butter—United States, 2006–2007. *MMWR* 2007;57:521–4.
5. CDC. Multistate outbreak of human *Salmonella* infections associated with exposure to turtles—United States, 2007–2008. *MMWR* 2008; 57:69–72.
6. US Department of Agriculture, Food Safety and Inspection Service. FSIS seeks comments on *Salmonella* sampling programs and activities. Washington, DC: US Department of Agriculture; 2008. Available at <http://www.fsis.usda.gov/oppde/rdad/frpubs/2006-0034.pdf>.

[†] Additional information about USDA FSIS and the STEC O157 initiative and meeting is available at <http://www.fsis.usda.gov>.

7. US Department of Agriculture, Food Safety and Inspection Service. Progress report on *Salmonella* testing of raw meat and poultry products, 1998–2007. Washington, DC: US Department of Agriculture; 2008. Available at http://www.fsis.usda.gov/science/progress_report_salmonella_testing/index.asp.
8. Fullerton KE, Ingram LA, Jones TF, et al. Sporadic *Campylobacter* infection in infants a population-based surveillance case-control study. *Pediatr Infect Dis J* 2007;26:19–24.
9. Jones TF, Ingram LA, Fullerton KE, et al. A case-control study of the epidemiology of sporadic *Salmonella* infection in infants. *Pediatrics* 2006;118:2380–7.

Malnutrition and Micronutrient Deficiencies Among Bhutanese Refugee Children — Nepal, 2007

Acute and chronic malnutrition and micronutrient deficiencies have been found in refugee camp populations (1). In southeastern Nepal, despite consistent access by refugees to general rations,* certain micronutrient deficiencies have posed a substantial health burden to the approximately 100,000 Bhutanese residing in seven refugee camps (2). Limited food diversity, frequent illness, and poor feeding practices have been cited as underlying causes of poor nutritional status in this population. Annual surveys to assess levels of acute malnutrition (i.e., wasting) and chronic malnutrition (i.e., stunting) have been conducted in these camps by the Association of Medical Doctors of Asia (AMDA) and United Nations High Commissioner for Refugees (UNHCR); however, the capacity to reliably evaluate micronutrient deficiencies has not existed locally in the camps (3). In January 2007, AMDA and CDC, at the request of UNHCR and the World Food Programme (WFP), conducted a nutritional survey of children aged 6–59 months, assessing 1) the prevalence of acute malnutrition, chronic malnutrition, underweight, anemia, and angular stomatitis (i.e., riboflavin deficiency); 2) the cumulative incidence of diarrhea and acute respiratory illness (ARI); and 3) the feeding practices of the children's mothers. This report describes the results of that survey, which indicated that, although acute malnutrition was found in only 4.2% of the children, chronic malnutrition was found in 26.9% and anemia in 43.3%. These findings underscore the importance of monitoring both malnutrition and micronutrient deficiencies and addressing the underlying causes of nutritional deficits.

* A daily general ration in Bhutanese refugee camps in Nepal consists of parboiled rice, 400 g; whole grain, 20 g; lentils, 40 g; vegetable oil, 25 g; sugar, 20 g; wheat soya blend, 35 g; salt, 7.5 g; fresh vegetables, 260 g (rotated each month and including cauliflower, potato, pumpkin, squash, and radish).

In 1991, approximately 100,000 Bhutanese mostly of Nepali origin began fleeing ethnic persecution in Bhutan and now live in seven refugee camps in southeastern Nepal. This refugee population has been stable since 1993 but remains dependent on food assistance. During January 28–February 6, 2007, a cross-sectional survey was conducted in the Bhutanese refugee camps. The number of households selected in each camp was proportional to the size of the camp; individual households were selected using a systematic random sampling method. Information was collected regarding all children aged 6–59 months in each household by interviewing their mothers. Questions were asked regarding foods eaten by their children within the preceding 24 hours, incidence of diarrhea (i.e., three or more episodes within the preceding 24 hours) or ARI (i.e., fever plus either cough or difficulty breathing) in children within the preceding 14 days, and beliefs regarding their practices for feeding their children. In addition, the children's weight and height measurements, hemoglobin levels, and presence of clinical signs of angular stomatitis were assessed.

Weight was measured using digital scales, and height (or recumbent length for children aged <2 years) was measured using a Shorr Infant-Child Height Board (4). Acute malnutrition was defined as a weight-for-height z-score <-2 or the presence of edema; severe acute malnutrition was defined as a weight-for-height z-score <-3 or edema (5). Chronic malnutrition was defined as a height-for-age z-score <-2; severe chronic malnutrition was defined as a height-for-age z-score <-3. Underweight was defined as a weight-for-age z-score <-2; severe underweight was defined as a weight-for-age z-score <-3. Hemoglobin was measured using a Hemocue B-Hemoglobin Photometer (6). Anemia was defined as hemoglobin \leq 11.0 g/dL for children and pregnant women and \leq 12.0 g/dL for nonpregnant women.

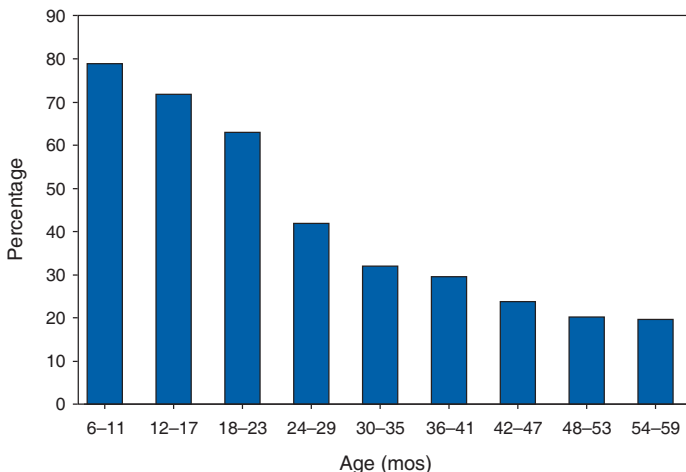
The survey sample included 497 children and their 413 mothers. Twenty-one (4.2%) of the children aged 6–59 months had acute malnutrition, and one (0.2%) had severe acute malnutrition (Table). The prevalence of acute malnutrition was greatest (6.0%) among children aged 12–23 months. Chronic malnutrition was identified in 134 (26.9%) children, and severe chronic malnutrition was identified in 21 (4.2%) children. A total of 125 (25.1%) children were underweight, and 24 (4.8%) were severely underweight. Both chronic malnutrition and underweight increased with age (chi square for both trends: $p = 0.001$).

Among the children, 215 (43.3%) had anemia; prevalence of anemia decreased with age (Figure), from 78.8% among infants aged 6–11 months to 20.1% among children aged 48–59 months (chi square for trend: $p < 0.001$).

TABLE. Number and percentage of Bhutanese refugee children aged 6–59 months with malnutrition or micronutrient deficiencies, by age group — Nepal, 2007

Malnutrition/Deficiency	Age group (mos)						Total		
	6–11		12–23		24–59		Total		
	No.	(%)	No.	(%)	No.	(%)	No.	(%)	
	(n = 52)		(n = 117)		(n = 328)		(N = 497)		(95% CI*)
Acute malnutrition (wt for ht z-score) [†]	1	(1.9)	7	(6.0)	13	(3.9)	21	(4.2)	(2.8–6.4)
Severe [§]	0	(0)	0	(0)	1	(0.3)	1	(0.2)	(0.0–1.1)
Chronic malnutrition (ht for age z-score) [¶]	5	(9.6)	27	(23.1)	102	(31.1)	134	(26.9)	(23.2–31.0)
Severe**	0	(0)	5	(4.3)	16	(4.9)	21	(4.2)	(2.8–6.4)
Underweight (wt for age z-score) [¶]	4	(7.7)	25	(21.4)	96	(29.3)	125	(25.1)	(21.5–29.1)
Severe**	3	(5.8)	3	(2.6)	18	(5.5)	24	(4.8)	(3.3–7.1)
Anemia	41	(78.8)	80	(68.4)	94	(28.7)	215	(43.3)	(39.0–47.7)
Angular stomatitis	1	(1.0)	4	(3.4)	51	(15.5)	56	(11.3)	(8.8–14.3)
Diarrhea	27	(51.9)	54	(46.2)	68	(20.7)	149	(30.0)	(26.2–34.2)
Acute respiratory illness	23	(44.2)	45	(38.5)	75	(22.9)	143	(28.8)	(25.0–32.9)

* Confidence interval.

[†] Defined as a z-score <-2.0 standard deviations from the reference median or presence of edema. (World Health Organization Expert Committee on Physical Status. Physical status: the use and interpretation of anthropometry. World Health Organ Tech Rep Ser 1995;854).[§] Defined as a z-score <-3.0 standard deviations from the reference median or presence of edema.[¶] Defined as a z-score <-2.0 standard deviations from the reference median.^{**} Defined as a z-score <-3.0 standard deviations from the reference median.**FIGURE. Percentage of Bhutanese refugee children aged 6–59 months with anemia, by age group — Nepal, 2007*[†]*** Chi-square test for trend, $p < 0.001$.[†] N = 497.

Angular stomatitis was identified in 56 (11.3%) children. The reported cumulative incidence of diarrhea and ARI in children during the preceding 14 days was 30.0% and 28.8%, respectively (Table).

Among the mothers, 56 (13.6%) had anemia; prevalence of anemia was significantly higher ($p = 0.01$) among mothers who were vegetarians (26.3%) than among non-vegetarians (12.1%). Twenty (4.9%) mothers reported exclusive breastfeeding of their children aged <6 months,

and 314 (76.1%) reported introducing liquids other than breast milk to their children aged <3 months.

Cumulative incidence of diarrhea and ARI, frequency of foods consumed within the preceding 24 hours, and presence of anemia in mothers were not associated with anemia among the children. However, given the high prevalence of anemia, iron supplementation was recommended for all children aged <2 years, in accordance with World Health Organization guidelines (7). Other recommendations included investigation of the causes of high incidence of diarrhea and ARI in the children and expanded education of mothers regarding recommended feeding practices, particularly exclusive breastfeeding of children aged <6 months and age-appropriate introduction of complementary foods.

Reported by: F Abdalla, J Mutharia, MD, United Nations High Commissioner for Refugees, Geneva, Switzerland. N Rimal, MD, Assoc of Medical Doctors of Asia, Bhadrapur, Nepal. O Bilukha, MD, PhD, L Talley, MPH, T Handzel, PhD, National Center for Environmental Health; S Bamrah, MD, EIS Officer, CDC.

Editorial Note: The nutritional status of refugees is determined by the prevalence of conditions related to both malnutrition and micronutrient deficiencies. However, historically, much attention has been paid to acute malnutrition and little attention to chronic malnutrition and micronutrient deficiencies. In the Bhutanese camps in Nepal, a stable population of refugees has been receiving a general ration that includes some fresh vegetables and fortified blended flour but does not meet requirements for key micronutrients such as iron, riboflavin, and vitamin C. Food often is brought to refugee camps from a distance

and requires storage and distribution. Perishable foods, such as vegetables (particularly green vegetables), fruits, and meats often are too costly and logistically difficult to be purchased in large quantities, stored, transported, likely stored again, and then distributed to refugees.

Restriction of refugee movement to participate in agriculture, forage for supplemental foods, or earn wages to buy commodities, further diminishes their ability to obtain micronutrient-rich foods not included in the general ration. Refugees in this setting have access to food markets; however, most do not have resources to afford foods rich in vitamins and minerals.

Micronutrient deficiencies are not clinically identifiable until late stages, and serologic testing is logistically difficult and costly. Given their diagnostic difficulty and impact on growth and development, micronutrient deficiencies should be addressed in children at an early age. This survey found that the prevalence of anemia was high in children, particularly those aged 6–11 months. Anemia is a common clinical manifestation of micronutrient deficiency, particularly iron deficiency. The prevalence of anemia was much higher in the children than in their mothers, despite access to similar foods. Potential reasons for this include 1) inadequate numbers of iron-rich foods, 2) poor feeding practices, and 3) frequent episodes of common diseases, such as those causing diarrhea and respiratory infections, which can increase loss of micronutrients.

Because options for diversification of the general ration are limited, diet supplementation and/or food fortification are the most likely methods to prevent micronutrient deficiencies. However, both fortification and supplementation are costly, and the addition of some fortificants reduces the shelf-life of commodities (8). Implementing supplementation and fortification programs will require changes in policies and practices of food aid agencies and increased donor participation, although fortification often is a cost-effective strategy for addressing micronutrient problems.

Educating mothers regarding appropriate breastfeeding and complementary feeding practices also is critical to preventing anemia and malnutrition in young children. Appropriate feeding practices include both exclusive breastfeeding until age 6 months and introduction of complementary foods rich in vitamins and minerals at appropriate ages. Exclusive breastfeeding until age 6 months is nutritionally adequate, protects children against infection, and prevents introduction of liquids, such as tea, that can inhibit iron absorption (9).

The high incidence of illness, particularly diarrheal disease, in these children can decrease absorption and increase

loss of micronutrients while also increasing metabolic (and consequently micronutrient) requirements. Determining the causes of frequent illnesses in the Bhutanese refugee children and implementing appropriate interventions to address these causes can decrease the effects of morbidity on micronutrient deficiencies and overall nutritional status (10).

The findings in this report are subject to at least one limitation. Although anemia was evaluated as a marker for iron deficiency, levels of iron deficiency (e.g., ferritin or transferrin receptors) were not measured directly. In addition, other clinically relevant micronutrients, such as thiamine, vitamin A, or zinc, were not measured because of cost and logistical constraints.

Additional priority given to chronic malnutrition and micronutrient deficiencies in refugee camps might reduce the incidence of anemia and other potential sequelae of these conditions, including slowed growth and development. One strategy that has been shown to reduce anemia in children and is currently being evaluated in refugee camp settings is the use of Sprinkles[®],[†] packets of dry powder, containing iron and other micronutrients intended for home fortification of foods. As lengths of stay in refugee camps increase, agencies should consider this and other new strategies to address all possible negative nutritional outcomes of prolonged dependence on food aid.

Acknowledgment

This report is based, in part, on contributions by S Mukherjee, World Food Programme, Damak, Nepal.

References

1. World Food Programme. Food and nutrition handbook. Rome, Italy: World Food Programme; 2002.
2. Blanck HM, Bowman BA, Serdula MK, Khan LK, Kohn W, Woodruff BA; Bhutanese Refugee Investigation Group. Angular stomatitis and riboflavin status among adolescent Bhutanese refugees living in southeastern Nepal. *Am J Clin Nutr* 2002;76:430–5.
3. UNHCR/WFP Joint Assessment Mission. Assistance to Bhutanese refugees in Nepal. World Food Programme and United Nations High Commissioner for Refugees; 2006. Available at <http://www.unhcr.org/publ/PUBL/45f81e6a2.pdf>.
4. United Nations. How to weigh and measure children. Assessing the nutritional status on young children in household surveys. New York, NY: United Nations; 1986.
5. WHO Expert Committee on Physical Status. Physical status: the use and interpretation of anthropometry. *World Health Organ Tech Rep Ser* 1995;854.
6. Cohen AR, Seidl-Friedman J. HemoCue system for hemoglobin measurement: evaluation in anemic and nonanemic children. *Am J Clin Pathol* 1988;90:302–5.

[†] Additional information available at http://www.sghi.org/about_sprinkles/index.html.

7. United Nations Children's Fund, United Nations University, World Health Organization. Iron deficiency anaemia: assessment, prevention, and control. A guide for programme managers. United Nations Children's Fund, United Nations University, World Health Organization; 2001. Available at http://www.who.int/nutrition/publications/en/ida_assessment_prevention_control.pdf.
8. Weise Prinzo Z, de Benoist B. Meeting the challenges of micronutrient deficiencies in emergency affected populations. *Proc Nutr Soc* 2002;61:251-7.
9. Michaelsen KF, Weaver L, Branca F, Robertson A. Feeding and nutrition of infants and young children. [Chapter 6]. WHO Regional Publications European Series, No. 87:115.
10. Bhutta ZA, Ahmed T, Black RE, et al. What works? Interventions for maternal and child undernutrition and survival. *Lancet* 2008; 371:417-40.

Automated Detection and Reporting of Notifiable Diseases Using Electronic Medical Records Versus Passive Surveillance — Massachusetts, June 2006–July 2007

Electronic medical record (EMR) systems have the potential to improve reporting of notifiable diseases beyond either traditional clinician-initiated or automated laboratory-based reporting systems. Traditional clinician-initiated passive surveillance is burdensome to clinicians and often incomplete and delayed (1,2). Electronic laboratory reporting addresses these limitations (3,4) but often lacks information needed for public health purposes (e.g., patient signs and symptoms, prescribed treatments, and pregnancy status). Laboratory systems also do not integrate multiple laboratory tests to satisfy a case definition. Many EMRs, however, contain this information and store it in a form that is amenable to electronic analysis and reporting. Consequently, EMR-based reporting has the potential to provide active notifiable disease surveillance that is more timely, complete, and clinically detailed. This report summarizes findings from a pilot EMR-based electronic surveillance system in Massachusetts, which documented increases of 39% in reported chlamydia and 53% in reported gonorrhea for the period June 2006–July 2007, compared with the existing passive surveillance system. Eighty-one instances of pregnancy not identified by passive surveillance were reported by the electronic system in patients with chlamydia or gonorrhea. In addition, the electronic system identified 20 cases of pelvic inflammatory disease and four cases of acute hepatitis A, compared with none and one, respectively, reported via the passive system.

Improved reporting can help public health departments better allocate limited resources for targeted investigations and interventions.

The Massachusetts Department of Public Health, the Department of Ambulatory Care and Prevention at Harvard Medical School and Harvard Pilgrim Health Care, and Atrius Health collaborated under the auspices of the CDC Center of Excellence in Public Health Informatics at Harvard Pilgrim Health Care and Children's Hospital in Boston to create a system called Electronic Support for Public Health (ESP) (5). Atrius Health is a multispecialty group practice that provides primary care and outpatient specialty services to approximately 600,000 children and adults at 35 clinical facilities in eastern Massachusetts. ESP is designed to be compatible with most commercial EMR systems. Data on patient visits are exported from the EMR system to an independent ESP server every 24 hours. Transfer of data is an important aspect of ESP's compatibility with most EMR systems. Export of data also enables analysis without burdening the medical practice EMR system. The ESP server is secured behind the practice's electronic firewall to ensure the security of sensitive clinical information.

ESP was activated in January 2007 and populated with data beginning in June 2006. Data transferred from the EMR system to ESP include patient demographics, vital signs, test orders, test results, prescriptions, diagnostic codes, and health-care provider details. These data were regularly analyzed by ESP for evidence of four notifiable diseases: chlamydia, gonorrhea, pelvic inflammatory disease, and acute hepatitis A. Cases were defined on the basis of combinations of test orders, test results, medication prescriptions, and *International Statistical Classification of Diseases and Related Health Problems, Ninth Revision* (ICD-9) diagnostic codes. ESP case definitions were modeled after CDC surveillance definitions but limited to the coded data captured by EMRs (Table). When one of the four notifiable diseases was detected, ESP generated an electronic report and transmitted it to the state health department via the Internet. The report included the patient's name and contact information, clinician's name and contact information, disease diagnosed, laboratory test results, prescriptions, pregnancy status, and any patient symptoms that were inferred from ICD-9 codes in the electronic record. During the study period, the practice's conventional reporting continued routinely, independent of ESP, under the auspices of an infection-control practitioner in some facilities and through spontaneous clinician initiative in others. The practice's personnel were not informed of cases identified by ESP.

TABLE. Comparison of notifiable diseases definitions used by the Electronic Support for Public Health (ESP) system with CDC surveillance definitions — Massachusetts, June 2006–July 2007

Disease	ESP definition	CDC surveillance definition
Chlamydia	Positive result on any of the following tests: <ul style="list-style-type: none"> • <i>Chlamydia trachomatis</i> culture • <i>C. trachomatis</i> nucleic acid probe, nucleic acid amplification assay, or enzyme immunoassay 	Isolation of <i>C. trachomatis</i> by culture or Demonstration of <i>C. trachomatis</i> in a clinical specimen by detection of antigen or nucleic acid
Gonorrhea	Positive result on any of the following tests: <ul style="list-style-type: none"> • <i>Neisseria gonorrhoeae</i> culture • <i>N. gonorrhoeae</i> nucleic acid probe, nucleic acid amplification assay, or enzyme immunoassay 	Isolation of <i>N. gonorrhoeae</i> from a clinical specimen or Observation of gram-negative, intracellular diplococci in a urethral smear obtained from a man
Pelvic inflammatory disease	Diagnosis with any of the following ICD-9* codes: <ul style="list-style-type: none"> • 614.0 – acute salpingitis or oophoritis • 614.2 – salpingitis or oophoritis, not otherwise specified • 614.3 – acute parametritis and pelvic cellulitis • 614.5 – acute pelvic peritonitis • 614.9 – pelvic inflammatory disease • 099.56 – <i>C. trachomatis</i> infection of the peritoneum <p>And at least one of the following within 28 days before or after diagnosis with the ICD-9 code:</p> <ul style="list-style-type: none"> • Meets the ESP case definition for <i>C. trachomatis</i> • Meets the ESP case definition for <i>N. gonorrhoeae</i> 	All of the following: <ul style="list-style-type: none"> • Abdominal direct tenderness • Tenderness with motion of the cervix • Adnexal tenderness <p>And at least one of the following:</p> <ul style="list-style-type: none"> • Meets the surveillance case definition of <i>C. trachomatis</i> infection or gonorrhea • Temperature >100.4°F (>38.0°C) • Leukocytosis >10,000 white blood cells/μL • Purulent material in the peritoneal cavity obtained by culdocentesis or laparoscopy • Pelvic abscess or inflammatory complex on bimanual examination or by sonography • Patient is a sexual contact of a person known to have gonorrhea, chlamydia, or nongonococcal urethritis
Acute hepatitis A	Either of the following: <ul style="list-style-type: none"> • Alanine aminotransferase or aspartate aminotransferase greater than two times the upper limit of normal • ICD-9 code 782.4 for jaundice <p>And the following within a 14-day period:</p> <ul style="list-style-type: none"> • Positive immunoglobulin M (IgM) antibody to hepatitis A virus 	An acute illness with 1) discrete onset of symptoms and 2) jaundice or elevated serum aminotransferase levels and Positive IgM antibody to hepatitis A virus or A case that meets the clinical case definition and occurs in a person who has an epidemiologic link with a person who has laboratory-confirmed hepatitis A (i.e., household or sexual contact with an infected person during the 15–50 days before the onset of symptoms)

SOURCES: Klompas M, Lazarus R, Daniel J, et al. Electronic medical record Support for Public Health (ESP): automated detection and reporting of statutory notifiable diseases to public health authorities. *Adv Dis Surv* 2007;3:3.

CDC. Case definitions. Atlanta, GA: US Department of Health and Human Services, CDC; 2008. Available at http://www.cdc.gov/ncphi/diss/nndss/casedef/case_definitions.htm.

* *International Classification of Diseases, Ninth Revision.*

For the period June 2006–July 2007, ESP reported 758 cases of chlamydia, 95 cases of gonorrhea, 20 cases of pelvic inflammatory disease, and four cases of acute hepatitis A. The charts of all cases identified by ESP were manually reviewed and matched with conventional, passive surveillance case reports in health department records. Compared with passive, paper-based reporting, ESP increased the number of chlamydia reports by 39% (758 cases versus 545) and gonorrhea by 53% (95 cases versus 62). In addition, ESP identified 20 cases of pelvic inflammatory disease cases, compared with none identified by passive surveillance, and four cases of acute hepatitis A, compared with one.

A total of six cases of chlamydia in health department records were not detected by ESP. Chart reviews revealed

five of these to be false positives. The one true case missed by ESP had been miscoded in the EMR system that fed data to ESP. All cases of gonorrhea, pelvic inflammatory disease, and acute hepatitis A detected by passive surveillance also were identified by ESP.

All ESP case reports included patient treatment information and pregnancy status. In contrast, passive surveillance reports included pregnancy status for 5% of cases and treatment information for 88% of cases. ESP reported 81 cases of pregnancy in females with chlamydia or gonorrhea that were not noted on passive surveillance reports. Spellings of patient names on passive surveillance reports were compared with spellings in ESP data. Passive surveillance reports had a 5% rate of transcription errors, compared with no errors in ESP reports.

Reported by: *M Klompas, MD, R Lazarus, MBBS, MPH, R Platt, MD, Dept of Ambulatory Care and Prevention, Harvard Medical School and Harvard Pilgrim Health Care; X Hou, MSc, Channing Laboratory, Brigham and Women's Hospital and Harvard Medical School; FX Campion, MD, B Kruskal, MD, PhD, Atrius Health and Harvard Medical School, Boston; G Haney, MPH, W Dumas, J Daniel, MPH, A DeMaria, MD, Massachusetts Dept of Public Health. SJN McNabb, PhD, Div of Integrated Surveillance Systems and Services, National Center for Public Health Informatics, CDC.*

Editorial Note: This comparison of EMR-based detection and reporting of four notifiable diseases with traditional methods illustrates that automated, active surveillance using EMR data has the potential to improve public health monitoring by ensuring that cases are reported and by enhancing the timeliness, accuracy, and clinical detail of reports. Improved reporting can help public health departments better allocate limited resources for targeted investigations and interventions. For example, ESP has the potential to reliably identify high-priority cases for intervention, such as untreated chlamydia or gonorrhea in women who are pregnant. EMR-based surveillance and reporting also might support additional public health practices, such as populating immunization information systems or enabling statistical analyses for outbreak detection and investigation.

Currently, EMR-based surveillance cannot obviate the need for additional data collection by public health department personnel for certain cases. EMRs typically do not contain certain pieces of key epidemiologic data in a coded form that can be identified readily by electronic algorithms. Examples include case contacts, risky behaviors, foreign travel, and relevant occupations (e.g., food handler or day care worker).

ESP complements the existing National Electronic Diseases Surveillance System (NEDSS), established by CDC in 2001 to enable local and state health departments to send electronic data to CDC for public health monitoring of notifiable conditions nationwide (6). NEDSS-compatible systems currently operate in 38 states and the District of Columbia (7). ESP can facilitate electronic collection and transmission of case reports from health-care providers to local and state public health departments, which in turn can use NEDSS-compatible systems to deliver summary data to CDC.

Different strategies for implementing EMR-based case detection and reporting will need to be developed for different kinds of medical organizations. The stand-alone, server-based implementation of ESP described in this report is designed for large practices or health information exchanges. Incorporating ESP logic into commercial EMR

software or developing stand-alone ESP modules that can operate side by side with EMRs on clinicians' office-based computers also should be feasible. Source code for ESP is freely available (at <http://esphealth.org>) under an open source license compatible with commercial development.

Widespread implementation of electronic case detection and reporting is currently limited by the slow pace of adoption of EMRs by clinical practices, variation in coding practices among proprietary EMR systems, and an absence of standards for identifying cases using electronic data alone. As of 2006, only 29% of ambulatory medical practices were using EMR systems (8). In addition, the breadth of information collected by EMR systems varies substantially. EMRs that do not include prescription data, for example, limit the sensitivity and specificity of some electronic disease-detection algorithms (9). Further, different EMR systems use different proprietary coding systems. ESP does include tools to translate proprietary codes into standard nomenclatures; however, use of this translation requires customization for each system. Finally, existing case definitions for notifiable diseases (10) incorporate clinical descriptors such as "acute onset of symptoms" or "undue fatigue" or "jaundice" that are inconsistently noted on EMRs.

Development of ESP continues. The system has added reporting of acute hepatitis B, acute hepatitis C, and active tuberculosis. In addition, ESP's portability is being assessed by installing it in a regional health information exchange populated by a different EMR system. Meanwhile, development of electronic case definitions and widespread adoption of standard laboratory test nomenclatures, consensus lists of treatments, and standard reporting elements will facilitate more meaningful, comparable, and widespread electronic reporting of notifiable diseases.

Acknowledgment

This report is based, in part, on the contributions of J Dunn, MPH, Dept of Ambulatory Care and Prevention, Harvard Medical School and Harvard Pilgrim Health Care, Boston, Massachusetts.

References

1. Doyle TJ, Glynn MK, Groseclose SL. Completeness of notifiable infectious disease reporting in the United States: an analytical literature review. *Am J Epidemiol* 2002;155:866-74.
2. Standaert SM, Lefkowitz LB Jr, Horan JM, Hutcheson RH, Schaffner W. The reporting of communicable diseases: a controlled study of *Neisseria meningitidis* and *Haemophilus influenzae* infections. *Clin Infect Dis* 1995;20:30-6.
3. Effler P, Ching-Lee M, Bogard A, Jeong MC, Nekomoto T, Jernigan D. Statewide system of electronic notifiable disease reporting from clinical laboratories: comparing automated reporting with conventional methods. *JAMA* 1999;282:1845-50.

4. Overhage JM, Grannis S, McDonald CJ. A comparison of the completeness and timeliness of automated electronic laboratory reporting and spontaneous reporting of notifiable conditions. *Am J Public Health* 2008;98:344–50.
5. Klompas M, Lazarus R, Daniel J, et al. Electronic medical record support for public health (ESP): automated detection and reporting of statutory notifiable diseases to public health authorities. *Adv Dis Surv* 2007;3:3.
6. National Electronic Disease Surveillance System Working Group. National Electronic Disease Surveillance System (NEDSS): a standards-based approach to connect public health and clinical medicine. *J Public Health Manag Pract* 2001;7:43–50.
7. Trust for America's Health. Ready or not? Protecting the public's health from diseases, disasters, and bioterrorism 2007. Washington, DC: Trust for America's Health; 2007. Available at <http://www.healthyamericans.org/reports/bioterror07>.
8. Hing ES, Burt CW, Woodwell DA. Electronic medical record use by office-based physicians and their practices: United States, 2006. *Adv Data* 2007;393:1–7.
9. Yokoe DS, Coon SW, Dokholyan R, et al. Pharmacy data for tuberculosis surveillance and assessment of patient management. *Emerg Infect Dis* 2004;10:1426–31.
10. CDC. Case definitions. Atlanta, GA: US Department of Health and Human Services, CDC; 2008. Available at http://www.cdc.gov/ncphi/diss/nndss/casedef/case_definitions.htm.

Notice to Readers

Introduction to Public Health Surveillance Course

CDC and the Rollins School of Public Health at Emory University will cosponsor the course, Introduction to Public Health Surveillance, to be held May 19–23, 2008, at Emory University in Atlanta, Georgia. The course is designed for state and local public health professionals. Tuition is charged.

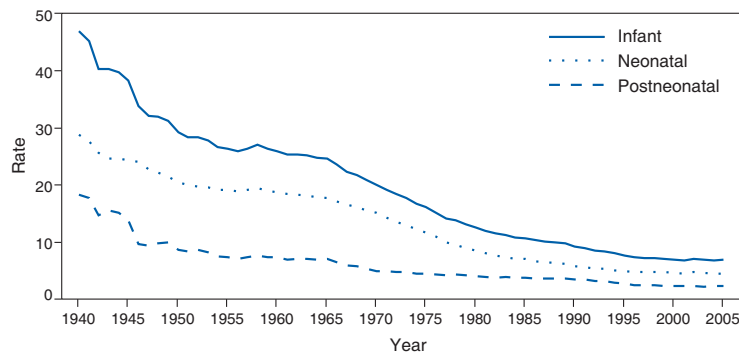
The course will provide practicing public health professionals with theoretical and practical knowledge to design, implement, and evaluate effective surveillance programs. Course topics include an overview and history of surveillance systems; planning considerations; sources and collection of data; analysis, interpretation, and communication of data; surveillance systems technology; ethics and legalities; state and local concerns; and future considerations.

Additional information and applications are available from Emory University by mail (Hubert Global Health Dept., 1518 Clifton Rd. NE, Rm. 746, Atlanta, GA 30322), by telephone (404-727-3485), by fax (404-727-4590), online (<http://www.sph.emory.edu/epicourses>), or by e-mail (pvaleri@sph.emory.edu).

QuickStats

FROM THE NATIONAL CENTER FOR HEALTH STATISTICS

Infant, Neonatal, and Postneonatal Annual Mortality Rates* — United States, 1940–2005



* Per 1,000 live births for each group: infant (age <1 year), neonatal (age <28 days), and postneonatal (age 28 days to <1 year).

From 1940 to 2005 (most recent data available), infant, neonatal, and postneonatal annual mortality rates in the United States declined substantially. The infant mortality rate decreased 85%, from 47 infant deaths per 1,000 live births in 1940 to 6.87 in 2005. During the same period, substantial changes also occurred in the neonatal rate, which decreased 84%, from 28.8 to 4.54 deaths per 1,000 live births, and the postneonatal rate, which decreased 87%, from 18.3 to 2.34 deaths per 1,000 live births.

SOURCE: Kung HC, Hoyert DL, Xu J, Murphy SL. Deaths: final data for 2005. Natl Vital Stat Rep 2008;56(10). Available at http://www.cdc.gov/nchs/data/nvsr/nvsr56/nvsr56_10.pdf.

TABLE I. Provisional cases of infrequently reported notifiable diseases (<1,000 cases reported during the preceding year) — United States, week ending April 5, 2008 (14th Week)*

Disease	Current week	Cum 2008	5-year weekly average [†]	Total cases reported for previous years					States reporting cases during current week (No.)
				2007	2006	2005	2004	2003	
Anthrax	—	—	—	—	1	—	—	—	
Botulism:									
foodborne	1	2	0	28	20	19	16	20	CA (1)
infant	—	16	1	83	97	85	87	76	
other (wound & unspecified)	—	1	0	24	48	31	30	33	
Brucellosis	1	11	2	128	121	120	114	104	NV (1)
Chancroid	—	13	1	30	33	17	30	54	
Cholera	—	—	0	7	9	8	6	2	
Cyclosporiasis [§]	1	19	2	91	137	543	160	75	FL (1)
Diphtheria	—	—	—	—	—	—	—	1	
Domestic arboviral diseases ^{§¶} :									
California serogroup	—	—	0	44	67	80	112	108	
eastern equine	—	—	—	4	8	21	6	14	
Powassan	—	—	—	1	1	1	1	—	
St. Louis	—	—	0	7	10	13	12	41	
western equine	—	—	—	—	—	—	—	—	
Ehrlichiosis/Anaplasmosis ^{§¶¶} :									
<i>Ehrlichia chaffeensis</i>	1	22	1	734	578	506	338	321	MD (1)
<i>Ehrlichia ewingii</i>	—	1	—	—	—	—	—	—	
<i>Anaplasma phagocytophilum</i>	—	6	2	731	646	786	537	362	
undetermined	—	1	0	162	231	112	59	44	
<i>Haemophilus influenzae</i> ^{††}									
invasive disease (age <5 yrs):									
serotype b	1	10	0	23	29	9	19	32	AZ (1)
nonserotype b	—	38	3	174	175	135	135	117	
unknown serotype	4	65	4	190	179	217	177	227	KS (1), MD (1), FL (1), AZ (1)
Hansen disease [§]	1	17	2	73	66	87	105	95	CA (1)
Hantavirus pulmonary syndrome [§]	—	2	0	32	40	26	24	26	
Hemolytic uremic syndrome, postdiarrheal [§]	—	15	2	276	288	221	200	178	
Hepatitis C viral, acute	8	163	16	847	766	652	720	1,102	NY (1), MD (2), FL (1), CO (1), WA (1), CA (2)
HIV infection, pediatric (age <13 yrs) ^{§§}	—	—	4	—	—	380	436	504	
Influenza-associated pediatric mortality ^{§¶¶¶}	6	65	1	76	43	45	—	N	CHI (1), CT (1), NYC (1), TX (1), VA (1), TN (1)
Listeriosis	5	110	11	784	884	896	753	696	NC (1), FL (2), CA (2)
Measles ^{***}	—	10	1	42	55	66	37	56	
Meningococcal disease, invasive ^{†††} :									
A, C, Y, & W-135	1	75	7	306	318	297	—	—	WA (1)
serogroup B	—	45	3	149	193	156	—	—	
other serogroup	—	14	1	31	32	27	—	—	
unknown serogroup	12	190	18	580	651	765	—	—	PA (1), OH (1), DE (1), FL (3), OR (1), CA (5)
Mumps	7	156	91	777	6,584	314	258	231	NY (2), PA (1), OH (1), KS (1), NC (1), CA (1)
Novel influenza A virus infections	—	—	—	1	N	N	N	N	
Plague	—	1	—	6	17	8	3	1	
Poliomyelitis, paralytic	—	—	—	—	—	1	—	—	
Poliovirus infection, nonparalytic [§]	—	—	—	—	N	N	N	N	
Psittacosis [§]	—	1	0	11	21	16	12	12	
Q fever ^{§,§§} total:	1	12	2	190	169	136	70	71	
acute	1	9	—	—	—	—	—	—	TX (1)
chronic	—	3	—	—	—	—	—	—	
Rabies, human	—	—	—	—	3	2	7	2	
Rubella ^{¶¶¶}	—	2	0	11	11	11	10	7	
Rubella, congenital syndrome	—	—	0	—	1	1	—	1	
SARS-CoV ^{§,§§§}	—	—	0	—	—	—	—	8	

—: No reported cases. N: Not notifiable. Cum: Cumulative year-to-date counts.

* Incidence data for reporting years 2007 and 2008 are provisional, whereas data for 2003, 2004, 2005, and 2006 are finalized.

† Calculated by summing the incidence counts for the current week, the 2 weeks preceding the current week, and the 2 weeks following the current week, for a total of 5 preceding years. Additional information is available at <http://www.cdc.gov/epo/dphsi/phs/files/5yearweeklyaverage.pdf>.

§ Not notifiable in all states. Data from states where the condition is not notifiable are excluded from this table, except in 2007 and 2008 for the domestic arboviral diseases and influenza-associated pediatric mortality, and in 2003 for SARS-CoV. Reporting exceptions are available at <http://www.cdc.gov/epo/dphsi/phs/infdis.htm>.

¶ Includes both neuroinvasive and nonneuroinvasive. Updated weekly from reports to the Division of Vector-Borne Infectious Diseases, National Center for Zoonotic, Vector-Borne, and Enteric Diseases (ArboNET Surveillance). Data for West Nile virus are available in Table II.

¶¶ The names of the reporting categories changed in 2008 as a result of revisions to the case definitions. Cases reported prior to 2008 were reported in the categories: Ehrlichiosis, human monocytic (analogous to *E. chaffeensis*); Ehrlichiosis, human granulocytic (analogous to *Anaplasma phagocytophilum*), and Ehrlichiosis, unspecified, or other agent (which included cases unable to be clearly placed in other categories, as well as possible cases of *E. ewingii*).

†† Data for *H. influenzae* (all ages, all serotypes) are available in Table II.

§§ Updated monthly from reports to the Division of HIV/AIDS Prevention, National Center for HIV/AIDS, Viral Hepatitis, STD, and TB Prevention. Implementation of HIV reporting influences the number of cases reported. Updates of pediatric HIV data have been temporarily suspended until upgrading of the national HIV/AIDS surveillance data management system is completed. Data for HIV/AIDS, when available, are displayed in Table IV, which appears quarterly.

¶¶¶ Updated weekly from reports to the Influenza Division, National Center for Immunization and Respiratory Diseases. Sixty-five cases occurring during the 2007–08 influenza season have been reported.

*** No measles cases were reported for the current week.

††† Data for meningococcal disease (all serogroups) are available in Table II.

§§§ In 2008, Q fever acute and chronic reporting categories were recognized as a result of revisions to the Q fever case definition. Prior to that time, case counts were not differentiated with respect to acute and chronic Q fever cases.

¶¶¶¶ No rubella cases were reported for the current week.

§§§§ Updated weekly from reports to the Division of Viral and Rickettsial Diseases, National Center for Zoonotic, Vector-Borne, and Enteric Diseases.

TABLE I. (Continued) Provisional cases of infrequently reported notifiable diseases (<1,000 cases reported during the preceding year) — United States, week ending April 5, 2008 (14th Week)

Disease	Current week	Cum 2008	5-year weekly average†	Total cases reported for previous years					States reporting cases during current week (No.)
				2007	2006	2005	2004	2003	
Smallpox§	—	—	—	—	—	—	—	—	
Streptococcal toxic-shock syndrome§	4	34	5	104	125	129	132	161	OH (3), NE (1)
Syphilis, congenital (age <1 yr)	—	22	7	308	349	329	353	413	
Tetanus	—	1	0	23	41	27	34	20	
Toxic-shock syndrome (staphylococcal)§	—	13	2	84	101	90	95	133	
Trichinellosis	—	1	0	6	15	16	5	6	
Tularemia	2	4	0	115	95	154	134	129	NC (1), TN (1)
Typhoid fever	3	79	5	381	353	324	322	356	NE (1), TX (1), WA (1)
Vancomycin-intermediate <i>Staphylococcus aureus</i> §	—	1	0	27	6	2	—	N	
Vancomycin-resistant <i>Staphylococcus aureus</i> §	—	—	0	—	1	3	1	N	
Vibriosis (noncholera <i>Vibrio</i> species infections)§	—	32	2	361	N	N	N	N	
Yellow fever	—	—	—	—	—	—	—	—	

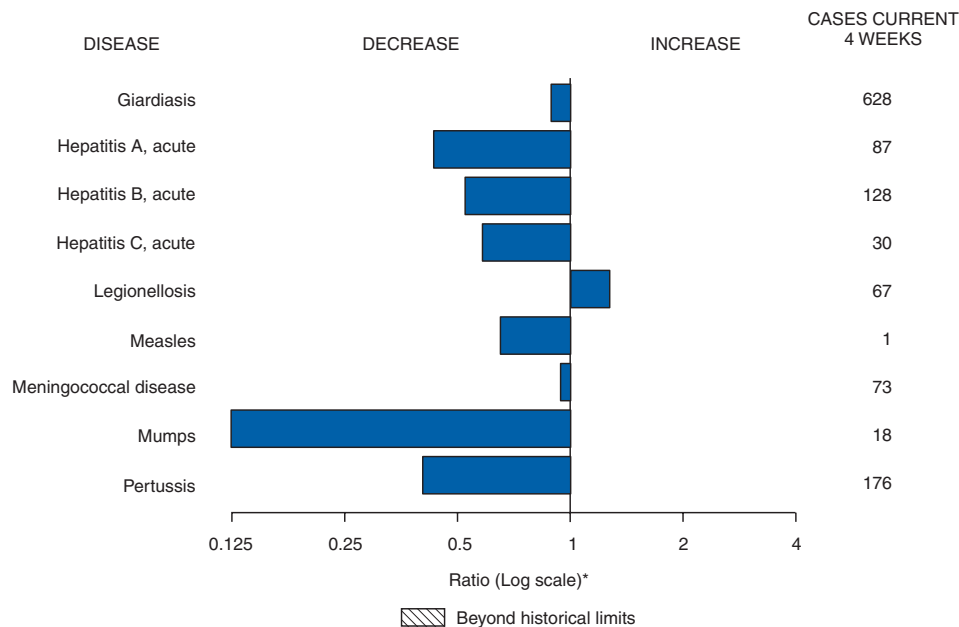
—: No reported cases. N: Not notifiable. Cum: Cumulative year-to-date counts.

* Incidence data for reporting years 2007 and 2008 are provisional, whereas data for 2003, 2004, 2005, and 2006 are finalized.

† Calculated by summing the incidence counts for the current week, the 2 weeks preceding the current week, and the 2 weeks following the current week, for a total of 5 preceding years. Additional information is available at <http://www.cdc.gov/epo/dphsi/phs/files/5yearweeklyaverage.pdf>.

§ Not notifiable in all states. Data from states where the condition is not notifiable are excluded from this table, except in 2007 and 2008 for the domestic arboviral diseases and influenza-associated pediatric mortality, and in 2003 for SARS-CoV. Reporting exceptions are available at <http://www.cdc.gov/epo/dphsi/phs/infdis.htm>.

FIGURE I. Selected notifiable disease reports, United States, comparison of provisional 4-week totals April 5, 2008, with historical data



* Ratio of current 4-week total to mean of 15 4-week totals (from previous, comparable, and subsequent 4-week periods for the past 5 years). The point where the hatched area begins is based on the mean and two standard deviations of these 4-week totals.

Notifiable Disease Data Team and 122 Cities Mortality Data Team
 Patsy A. Hall
 Deborah A. Adams Rosaline Dhara
 Willie J. Anderson Carol Worsham
 Lenee Blanton Pearl C. Sharp

TABLE II. Provisional cases of selected notifiable diseases, United States, weeks ending April 5, 2008, and April 7, 2007 (14th Week)*

Reporting area	Chlamydia†					Coccidioidomycosis					Cryptosporidiosis				
	Current week	Previous 52 weeks		Cum 2008	Cum 2007	Current week	Previous 52 weeks		Cum 2008	Cum 2007	Current week	Previous 52 weeks		Cum 2008	Cum 2007
		Med	Max				Med	Max				Med	Max		
United States	13,074	20,921	24,277	246,845	283,756	122	131	309	1,802	2,037	42	84	973	771	753
New England	641	680	1,517	9,048	9,014	—	0	1	1	1	—	4	16	24	81
Connecticut	309	210	1,093	2,183	2,204	N	0	0	N	N	—	0	2	2	42
Maine§	42	50	67	729	711	N	0	0	N	N	—	1	5	2	7
Massachusetts	224	311	661	4,754	4,393	N	0	0	N	N	—	1	11	—	14
New Hampshire	1	39	73	542	533	—	0	1	1	1	—	1	5	7	12
Rhode Island§	65	61	98	834	925	—	0	0	—	—	—	0	3	2	—
Vermont§	—	12	32	6	248	N	0	0	N	N	—	1	4	11	6
Mid. Atlantic	2,466	2,730	4,703	33,517	37,394	—	0	0	—	—	5	11	117	112	88
New Jersey	139	387	522	3,528	5,956	N	0	0	N	N	—	1	7	3	5
New York (Upstate)	555	563	2,044	6,724	6,020	N	0	0	N	N	1	4	20	30	20
New York City	1,222	924	2,919	12,402	13,941	N	0	0	N	N	—	1	10	17	22
Pennsylvania	550	787	1,754	10,863	11,477	N	0	0	N	N	4	6	103	62	41
E.N. Central	902	3,394	4,863	38,105	47,617	—	1	3	9	11	3	20	134	170	167
Illinois	—	1,010	2,209	8,762	13,454	N	0	0	N	N	—	2	13	14	24
Indiana	337	385	652	5,274	5,774	N	0	0	N	N	—	2	41	16	9
Michigan	293	709	1,002	10,432	10,654	—	0	2	6	9	—	4	11	43	36
Ohio	44	866	2,119	8,268	12,355	—	0	1	3	2	2	5	60	56	48
Wisconsin	228	381	610	5,369	5,380	N	0	0	N	N	1	7	59	41	50
W.N. Central	810	1,201	1,462	15,531	16,784	—	0	77	—	3	6	15	124	123	98
Iowa	120	162	251	2,302	2,287	N	0	0	N	N	2	3	61	30	17
Kansas	216	148	393	1,730	2,150	N	0	0	N	N	—	2	16	16	13
Minnesota	—	258	318	2,920	3,612	—	0	77	—	—	—	3	34	32	23
Missouri	385	463	551	6,358	6,217	—	0	1	—	3	3	2	13	17	19
Nebraska§	28	88	183	1,098	1,370	N	0	0	N	N	1	2	24	16	6
North Dakota	2	32	65	382	489	N	0	0	N	N	—	0	6	1	1
South Dakota	59	52	81	741	659	N	0	0	N	N	—	2	16	11	19
S. Atlantic	5,151	3,952	6,417	48,820	52,615	—	0	1	2	2	17	20	69	180	173
Delaware	39	64	140	942	965	—	0	0	—	—	—	0	4	4	2
District of Columbia	92	113	200	1,452	1,507	—	0	0	—	—	—	0	2	3	3
Florida	1,046	1,262	1,556	17,821	11,912	N	0	0	N	N	7	8	35	83	88
Georgia	5	521	1,502	95	11,304	N	0	0	N	N	7	5	17	63	38
Maryland§	389	461	675	5,685	4,446	—	0	1	2	2	1	0	3	3	5
North Carolina	—	257	4,656	7,008	8,303	N	0	0	N	N	—	1	18	9	8
South Carolina§	3,155	503	3,030	7,723	6,830	N	0	0	N	N	2	1	15	8	12
Virginia§	424	490	1,062	7,309	6,526	N	0	0	N	N	—	1	5	4	16
West Virginia	1	59	95	785	822	N	0	0	N	N	—	0	5	3	1
E.S. Central	901	1,478	2,287	19,827	22,698	—	0	0	—	—	5	4	65	30	39
Alabama§	26	482	605	5,659	6,889	N	0	0	N	N	2	1	14	15	17
Kentucky	222	199	357	2,772	1,541	N	0	0	N	N	—	1	40	4	10
Mississippi	—	268	1,048	4,109	6,243	N	0	0	N	N	—	0	11	3	8
Tennessee§	653	497	719	7,287	8,025	N	0	0	N	N	3	1	18	8	4
W.S. Central	570	2,584	3,791	35,389	30,630	—	0	1	1	—	1	6	28	49	45
Arkansas§	180	207	455	3,843	2,381	N	0	0	N	N	1	0	8	3	3
Louisiana	109	328	851	2,946	4,887	—	0	1	1	—	—	1	4	3	14
Oklahoma	281	239	418	3,243	3,712	N	0	0	N	N	—	1	11	11	10
Texas§	—	1,739	3,405	25,357	19,650	N	0	0	N	N	—	3	16	32	18
Mountain	211	1,396	1,834	8,564	19,507	92	88	171	1,249	1,345	5	9	571	70	46
Arizona	40	449	672	756	6,157	92	84	169	1,230	1,308	—	1	6	11	6
Colorado	53	308	488	1,261	4,909	N	0	0	N	N	2	2	26	15	16
Idaho§	—	57	233	1,007	1,041	N	0	0	N	N	1	1	72	15	1
Montana§	25	48	363	758	778	N	0	0	N	N	1	1	7	9	3
Nevada§	—	183	291	1,706	2,526	—	1	6	11	12	—	0	6	2	—
New Mexico§	—	162	394	1,490	2,398	—	0	2	5	9	—	2	9	6	15
Utah	93	124	216	1,575	1,357	—	1	7	3	16	1	1	488	8	1
Wyoming§	—	20	35	11	341	—	0	1	—	—	—	0	8	4	4
Pacific	1,422	3,303	4,055	38,044	47,497	30	37	217	540	675	—	2	20	13	16
Alaska	71	92	137	1,054	1,295	N	0	0	N	N	—	0	2	1	—
California	1,093	2,708	3,464	32,824	37,295	30	37	217	540	675	—	0	0	—	—
Hawaii	—	109	134	1,172	1,537	N	0	0	N	N	—	0	4	—	—
Oregon§	258	184	403	2,886	2,593	N	0	0	N	N	—	2	16	12	16
Washington	—	131	621	108	4,777	N	0	0	N	N	—	0	0	—	—
American Samoa	5	0	32	42	21	N	0	0	N	N	N	0	0	N	N
C.N.M.I.	—	—	—	—	—	—	—	—	—	—	—	—	—	—	—
Guam	—	9	34	25	210	—	0	0	—	—	—	0	0	—	—
Puerto Rico	154	111	612	1,470	2,250	N	0	0	N	N	N	0	0	N	N
U.S. Virgin Islands	—	3	9	—	58	—	0	0	—	—	—	0	0	—	—

C.N.M.I.: Commonwealth of Northern Mariana Islands.

U: Unavailable. —: No reported cases. N: Not notifiable. Cum: Cumulative year-to-date counts. Med: Median. Max: Maximum.

* Incidence data for reporting years 2007 and 2008 are provisional. Data for HIV/AIDS, AIDS, and TB, when available, are displayed in Table IV, which appears quarterly.

† Chlamydia refers to genital infections caused by *Chlamydia trachomatis*.

§ Contains data reported through the National Electronic Disease Surveillance System (NEDSS).

TABLE II. (Continued) Provisional cases of selected notifiable diseases, United States, weeks ending April 5, 2008, and April 7, 2007 (14th Week)*

Reporting area	Giardiasis					Gonorrhea					<i>Haemophilus influenzae</i> , invasive All ages, all serotypes [†]				
	Current week	Previous 52 weeks		Cum 2008	Cum 2007	Current week	Previous 52 weeks		Cum 2008	Cum 2007	Current week	Previous 52 weeks		Cum 2008	Cum 2007
		Med	Max				Med	Max				Med	Max		
United States	172	298	1,088	3,140	3,874	3,492	6,597	7,949	71,448	91,851	29	44	135	737	748
New England	3	22	54	168	286	114	101	227	1,261	1,446	—	3	8	15	53
Connecticut	—	6	18	69	77	71	41	199	462	497	—	0	7	2	15
Maine [§]	3	3	10	32	41	1	2	8	24	20	—	0	3	4	4
Massachusetts	—	7	29	—	130	36	51	127	654	735	—	0	6	—	29
New Hampshire	—	1	4	18	3	1	2	6	27	40	—	0	2	4	5
Rhode Island [§]	—	1	15	20	—	5	6	14	94	139	—	0	2	2	—
Vermont [§]	—	3	8	29	35	—	1	5	—	15	—	0	1	3	—
Mid. Atlantic	38	58	118	553	701	483	661	1,004	7,411	9,565	7	9	27	146	166
New Jersey	—	7	15	21	92	43	114	141	1,266	1,651	—	1	7	24	26
New York (Upstate)	28	23	100	236	211	101	125	518	1,518	1,517	3	2	20	36	39
New York City	2	16	29	123	238	178	165	503	1,827	3,039	2	1	6	26	38
Pennsylvania	8	14	30	173	160	161	232	551	2,800	3,358	2	3	11	60	63
E.N. Central	22	46	91	464	627	359	1,299	1,820	13,683	19,531	4	6	23	111	94
Illinois	—	13	33	90	180	—	378	772	2,676	4,771	—	2	7	29	33
Indiana	N	0	0	N	N	163	159	308	2,224	2,303	—	1	19	24	8
Michigan	1	11	22	98	179	95	285	541	4,031	4,740	—	0	3	5	10
Ohio	18	15	37	213	184	24	356	914	3,138	5,807	4	2	6	51	37
Wisconsin	3	7	21	63	84	77	121	214	1,614	1,910	—	0	1	2	6
W.N. Central	14	22	581	364	247	220	363	446	4,014	5,351	2	3	24	58	37
Iowa	4	4	23	64	53	12	29	56	346	556	—	0	1	1	—
Kansas	1	3	11	33	31	52	40	102	421	642	1	0	2	5	4
Minnesota	—	0	575	115	4	—	65	90	723	923	—	0	21	10	12
Missouri	5	8	23	96	114	131	186	255	2,082	2,801	—	1	6	30	16
Nebraska [§]	4	3	8	37	27	16	26	57	344	324	1	0	3	9	4
North Dakota	—	0	3	7	2	—	2	6	28	27	—	0	2	3	1
South Dakota	—	1	6	12	16	9	5	11	70	78	—	0	0	—	—
S. Atlantic	44	54	96	636	669	1,456	1,577	2,521	17,105	20,813	6	11	30	212	190
Delaware	—	1	6	11	8	13	24	44	329	379	—	0	1	2	5
District of Columbia	—	0	6	16	16	29	45	71	502	618	—	0	2	4	2
Florida	20	23	47	274	288	363	485	619	6,285	5,129	1	3	10	57	56
Georgia	20	12	44	198	151	4	190	621	42	4,583	2	2	8	54	44
Maryland [§]	1	4	18	48	67	84	129	235	1,595	1,467	2	2	6	43	32
North Carolina	N	0	0	N	N	—	181	1,825	3,094	4,081	—	0	9	23	15
South Carolina [§]	3	2	6	29	18	849	201	1,361	2,743	2,741	1	1	4	14	15
Virginia [§]	—	10	40	47	114	114	124	486	2,309	1,589	—	1	23	9	15
West Virginia	—	0	8	13	7	—	17	38	206	226	—	0	3	6	6
E.S. Central	2	10	23	91	121	328	565	868	7,183	8,297	—	2	8	35	39
Alabama [§]	—	4	11	54	72	12	206	282	2,311	2,919	—	0	3	5	10
Kentucky	N	0	0	N	N	90	80	161	1,060	499	—	0	1	—	2
Mississippi	N	0	0	N	N	—	112	401	1,620	2,178	—	0	2	4	2
Tennessee [§]	2	4	16	37	49	226	174	261	2,192	2,701	—	2	6	26	25
W.S. Central	4	6	21	52	83	209	1,006	1,347	12,148	12,936	5	2	15	34	30
Arkansas [§]	3	2	9	24	33	67	80	138	1,271	1,127	1	0	2	1	1
Louisiana	—	2	14	11	28	50	181	384	1,619	2,929	—	0	2	2	4
Oklahoma	1	3	9	17	22	92	84	172	1,258	1,575	4	1	8	30	24
Texas [§]	N	0	0	N	N	—	641	962	8,000	7,305	—	0	3	1	1
Mountain	10	31	68	226	353	69	255	335	1,503	3,543	5	5	13	102	93
Arizona	—	3	11	29	52	16	98	127	214	1,263	3	2	11	59	41
Colorado	5	10	26	56	122	43	60	91	332	929	2	1	4	8	21
Idaho [§]	4	3	19	34	27	—	5	19	48	69	—	0	1	1	3
Montana [§]	1	2	8	20	19	1	1	48	22	29	—	0	1	1	—
Nevada [§]	—	3	8	24	29	—	45	85	450	607	—	0	1	5	5
New Mexico [§]	—	2	5	15	35	—	29	64	281	423	—	1	4	9	14
Utah	—	7	33	39	58	9	14	39	156	205	—	1	6	19	8
Wyoming [§]	—	1	3	9	11	—	1	5	—	18	—	0	1	—	1
Pacific	35	61	228	586	787	254	663	800	7,140	10,369	—	2	7	24	46
Alaska	1	2	5	21	16	9	10	24	105	140	—	0	4	4	4
California	20	42	84	410	573	216	574	693	6,503	8,802	—	0	5	1	11
Hawaii	—	1	4	3	20	—	12	23	123	180	—	0	1	3	3
Oregon [§]	4	9	19	105	115	29	24	63	392	287	—	1	5	16	28
Washington	10	8	137	47	63	—	17	142	17	960	—	0	3	—	—
American Samoa	—	0	0	—	—	—	1	0	1	2	—	0	0	—	—
C.N.M.I.	—	—	—	—	—	—	—	—	—	—	—	—	—	—	—
Guam	—	0	1	—	—	—	2	13	15	19	—	0	1	—	—
Puerto Rico	—	5	31	5	70	2	4	23	65	100	—	0	1	—	—
U.S. Virgin Islands	—	0	0	—	—	—	1	2	—	17	N	0	0	N	N

C.N.M.I.: Commonwealth of Northern Mariana Islands.

U: Unavailable. —: No reported cases. N: Not notifiable. Cum: Cumulative year-to-date counts. Med: Median. Max: Maximum.

* Incidence data for reporting years 2007 and 2008 are provisional.

[†] Data for *H. influenzae* (age <5 yrs for serotype b, nonserotype b, and unknown serotype) are available in Table I.

[§] Contains data reported through the National Electronic Disease Surveillance System (NEDSS).

TABLE II. (Continued) Provisional cases of selected notifiable diseases, United States, weeks ending April 5, 2008, and April 7, 2007 (14th Week)*

Reporting area	Hepatitis (viral, acute), by type [†]										Legionellosis				
	A					B									
	Current week	Previous 52 weeks		Cum 2008	Cum 2007	Current week	Previous 52 weeks		Cum 2008	Cum 2007	Current week	Previous 52 weeks		Cum 2008	Cum 2007
	Med	Max				Med	Max				Med	Max			
United States	26	52	146	590	701	34	80	230	756	1,115	16	48	94	463	401
New England	2	2	6	19	19	—	1	6	11	18	1	2	14	17	14
Connecticut	2	0	3	7	4	—	0	2	6	8	1	0	4	4	2
Maine [§]	—	0	1	2	—	—	0	2	3	1	—	0	2	—	—
Massachusetts	—	0	4	—	9	—	0	1	—	1	—	0	2	—	11
New Hampshire	—	0	3	1	4	—	0	1	1	4	—	0	2	2	—
Rhode Island [§]	—	0	2	9	2	—	0	3	1	3	—	0	6	8	—
Vermont [§]	—	0	1	—	—	—	0	1	—	1	—	0	2	3	1
Mid. Atlantic	5	9	21	81	104	6	7	17	71	154	3	14	37	97	108
New Jersey	—	2	6	14	36	—	1	4	1	42	—	1	11	9	19
New York (Upstate)	2	1	6	19	19	4	2	7	15	16	1	4	15	22	27
New York City	—	3	9	20	35	—	2	7	5	41	—	2	11	7	22
Pennsylvania	3	2	6	28	14	2	3	14	50	55	2	5	21	59	40
E. N. Central	2	5	13	68	86	3	8	15	88	137	1	11	30	112	96
Illinois	—	1	5	13	36	—	1	6	8	40	—	2	12	13	22
Indiana	—	0	4	4	4	—	0	8	5	5	—	1	7	6	5
Michigan	1	2	7	39	21	1	2	6	34	39	—	3	11	33	28
Ohio	1	1	3	9	19	2	2	7	38	42	1	4	17	60	35
Wisconsin	—	0	2	3	6	—	0	1	3	11	—	0	1	—	6
W.N. Central	1	4	24	74	32	—	2	8	19	48	—	2	9	21	13
Iowa	—	1	5	23	6	—	0	2	3	9	—	0	2	4	2
Kansas	—	0	3	5	—	—	0	2	3	4	—	0	1	—	—
Minnesota	—	0	23	9	18	—	0	5	—	4	—	0	6	2	2
Missouri	1	1	3	15	3	—	1	5	11	24	—	1	3	8	6
Nebraska [§]	—	1	4	21	3	—	0	1	2	4	—	0	2	6	2
North Dakota	—	0	0	—	—	—	0	1	—	—	—	0	0	—	—
South Dakota	—	0	1	1	2	—	0	1	—	3	—	0	1	1	1
S. Atlantic	6	10	21	88	125	7	18	54	214	280	3	8	31	99	95
Delaware	—	0	1	1	—	—	0	2	—	3	—	0	2	1	1
District of Columbia	—	0	5	—	8	—	0	0	—	1	—	0	2	6	—
Florida	6	3	8	41	44	6	6	12	93	87	2	3	12	44	40
Georgia	—	1	4	14	19	—	2	6	29	40	—	1	3	15	10
Maryland [§]	—	1	5	12	19	1	2	7	22	28	1	1	5	17	22
North Carolina	—	0	9	9	6	—	0	16	24	49	—	0	7	5	9
South Carolina [§]	—	0	4	2	4	—	1	6	18	20	—	0	2	2	4
Virginia [§]	—	1	5	8	25	—	2	15	21	39	—	1	6	6	6
West Virginia	—	0	2	1	—	—	0	23	7	13	—	0	5	3	3
E. S. Central	—	2	5	8	25	3	7	15	83	84	—	2	6	21	20
Alabama [§]	—	0	4	1	5	—	2	6	25	31	—	0	1	2	2
Kentucky	—	0	2	3	5	1	2	7	26	7	—	1	3	11	9
Mississippi	—	0	1	—	4	—	0	3	10	10	—	0	0	—	—
Tennessee [§]	—	1	3	4	11	2	2	8	22	36	—	1	4	8	9
W.S. Central	—	5	46	59	55	9	18	112	160	183	—	2	12	12	9
Arkansas [§]	—	0	1	—	4	—	1	4	3	20	—	0	3	1	1
Louisiana	—	0	3	1	8	—	1	6	12	23	—	0	2	—	1
Oklahoma	—	0	8	3	—	2	1	38	17	8	—	0	2	—	—
Texas [§]	—	4	45	55	43	7	12	94	128	132	—	2	12	11	7
Mountain	2	3	10	44	66	3	3	8	33	65	1	2	6	30	21
Arizona	2	2	10	22	51	—	1	4	7	31	—	1	5	15	6
Colorado	—	0	2	3	6	—	0	3	5	9	—	0	2	1	4
Idaho [§]	—	0	2	8	1	2	0	1	3	3	—	0	1	1	1
Montana [§]	—	0	2	—	—	—	0	1	—	—	—	0	1	2	1
Nevada [§]	—	0	1	—	4	1	1	3	11	15	1	0	2	3	2
New Mexico [§]	—	0	2	7	1	—	0	2	2	4	—	0	1	1	2
Utah	—	0	2	2	2	—	0	2	5	3	—	0	3	7	3
Wyoming [§]	—	0	1	2	1	—	0	1	—	—	—	0	1	—	2
Pacific	8	12	44	149	189	3	9	30	77	146	7	3	16	54	25
Alaska	—	0	1	1	1	—	0	2	2	2	—	0	0	—	—
California	6	9	34	118	176	2	6	19	56	117	7	2	13	46	20
Hawaii	—	0	2	2	2	—	0	2	1	—	—	0	1	1	—
Oregon [§]	—	1	3	11	5	1	1	3	9	18	—	0	2	4	—
Washington	2	1	8	17	5	—	1	10	9	9	—	0	2	3	5
American Samoa	—	0	0	—	—	—	0	13	—	—	N	0	0	N	N
C.N.M.I.	—	—	—	—	—	—	—	—	—	—	—	—	—	—	—
Guam	—	0	0	—	—	—	0	1	—	1	—	0	0	—	—
Puerto Rico	—	0	4	2	28	—	1	5	4	19	—	0	0	—	—
U.S. Virgin Islands	—	0	0	—	—	—	0	0	—	—	—	0	0	—	—

C.N.M.I.: Commonwealth of Northern Mariana Islands.

U: Unavailable. —: No reported cases. N: Not notifiable. Cum: Cumulative year-to-date counts. Med: Median. Max: Maximum.

* Incidence data for reporting years 2007 and 2008 are provisional.

† Data for acute hepatitis C, viral are available in Table I.

§ Contains data reported through the National Electronic Disease Surveillance System (NEDSS).

TABLE II. (Continued) Provisional cases of selected notifiable diseases, United States, weeks ending April 5, 2008, and April 7, 2007 (14th Week)*

Reporting area	Lyme disease					Malaria					Meningococcal disease, invasive† All serogroups				
	Current week	Previous 52 weeks		Cum 2008	Cum 2007	Current week	Previous 52 weeks		Cum 2008	Cum 2007	Current week	Previous 52 weeks		Cum 2008	Cum 2007
		Med	Max				Med	Max				Med	Max		
United States	41	325	1,317	1,338	2,055	7	25	110	163	242	13	19	52	324	348
New England	—	44	302	57	168	—	1	23	1	10	—	0	3	2	12
Connecticut	—	12	214	—	29	—	0	16	—	—	—	0	1	1	2
Maine§	—	6	61	33	12	—	0	2	—	3	—	0	1	1	2
Massachusetts	—	0	31	—	60	—	0	3	—	6	—	0	2	—	5
New Hampshire	—	8	88	20	61	—	0	4	1	1	—	0	1	—	—
Rhode Island§	—	0	79	—	—	—	0	7	—	—	—	0	1	—	1
Vermont§	—	1	13	4	6	—	0	2	—	—	—	0	1	—	2
Mid. Atlantic	29	169	678	807	1,058	1	7	18	34	61	1	2	7	37	38
New Jersey	7	40	189	137	339	—	1	4	—	10	—	0	1	1	7
New York (Upstate)	6	54	224	91	152	—	1	8	4	9	—	1	3	15	8
New York City	—	5	27	4	45	—	4	9	22	36	—	0	4	5	6
Pennsylvania	16	51	324	575	522	1	1	4	8	6	1	1	5	16	17
E.N. Central	—	11	169	21	75	3	2	7	35	39	1	3	8	53	58
Illinois	—	1	16	1	6	—	1	6	15	18	—	1	3	13	22
Indiana	—	0	7	1	1	—	0	2	1	1	—	0	4	9	6
Michigan	—	0	5	5	3	1	0	2	6	7	—	0	2	11	10
Ohio	—	0	4	3	2	2	0	3	11	7	1	1	3	14	13
Wisconsin	—	10	149	11	63	—	0	1	2	6	—	0	2	6	7
W.N. Central	—	4	714	5	23	—	0	8	6	12	—	1	8	37	27
Iowa	—	1	11	4	7	—	0	1	—	2	—	0	3	8	7
Kansas	—	0	2	—	1	—	0	1	—	—	—	0	1	1	2
Minnesota	—	0	714	—	15	—	0	8	1	7	—	0	7	15	7
Missouri	—	0	4	1	—	—	0	1	1	1	—	0	3	8	8
Nebraska§	—	0	1	—	—	—	0	2	4	2	—	0	2	4	1
North Dakota	—	0	2	—	—	—	0	1	—	—	—	0	1	—	1
South Dakota	—	0	0	—	—	—	0	1	—	—	—	0	1	1	1
S. Atlantic	8	64	215	392	686	1	5	14	45	48	4	3	11	43	44
Delaware	4	12	34	105	117	—	0	1	—	1	1	0	1	1	—
District of Columbia	2	0	7	29	2	—	0	1	—	1	—	0	0	—	—
Florida	1	1	11	9	7	—	1	7	15	12	3	1	7	19	13
Georgia	—	0	3	1	—	—	1	3	12	5	—	0	3	4	6
Maryland§	1	34	133	217	465	1	1	5	15	15	—	0	2	4	11
North Carolina	—	0	8	2	6	—	0	4	2	4	—	0	4	3	4
South Carolina§	—	0	4	2	4	—	0	1	1	—	—	0	3	9	4
Virginia§	—	17	62	26	81	—	0	7	—	10	—	0	2	2	6
West Virginia	—	0	9	1	4	—	0	1	—	—	—	0	1	1	—
E.S. Central	—	0	5	1	6	—	0	3	2	7	—	1	3	20	16
Alabama§	—	0	3	—	1	—	0	1	1	1	—	0	2	1	3
Kentucky	—	0	2	—	—	—	0	1	1	1	—	0	2	4	2
Mississippi	—	0	1	—	—	—	0	1	—	1	—	0	2	5	4
Tennessee§	—	0	4	1	5	—	0	2	—	4	—	0	2	10	7
W.S. Central	—	1	8	5	14	—	2	55	8	21	—	2	11	31	38
Arkansas§	—	0	1	—	—	—	0	1	—	—	—	0	2	2	5
Louisiana	—	0	0	—	2	—	0	2	—	10	—	0	3	8	12
Oklahoma	—	0	0	—	—	—	0	2	1	1	—	0	4	6	7
Texas§	—	1	8	5	12	—	1	54	7	10	—	1	6	15	14
Mountain	—	1	3	3	2	—	1	5	6	16	—	1	4	21	30
Arizona	—	0	1	1	—	—	0	1	1	4	—	0	2	3	7
Colorado	—	0	1	2	—	—	0	2	2	9	—	0	2	4	9
Idaho§	—	0	2	—	—	—	0	2	—	—	—	0	2	2	2
Montana§	—	0	2	—	1	—	0	1	—	1	—	0	1	2	1
Nevada§	—	0	2	—	1	—	0	3	3	—	—	0	2	4	3
New Mexico§	—	0	2	—	—	—	0	1	—	1	—	0	1	3	1
Utah	—	0	2	—	—	—	0	3	—	1	—	0	2	2	6
Wyoming§	—	0	1	—	—	—	0	0	—	—	—	0	1	1	1
Pacific	4	3	11	47	23	2	3	9	26	28	7	4	20	80	85
Alaska	—	0	2	—	2	—	0	0	—	2	—	0	1	—	1
California	4	2	9	46	21	1	2	8	19	19	5	3	12	61	63
Hawaii	N	0	0	N	N	—	0	1	1	1	—	0	2	—	3
Oregon§	—	0	1	1	—	—	0	2	3	5	1	1	3	10	8
Washington	—	0	7	—	—	1	0	3	3	1	1	0	8	9	10
American Samoa	N	0	0	N	N	—	0	0	—	—	—	0	0	—	—
C.N.M.I.	—	—	—	—	—	—	—	—	—	—	—	—	—	—	—
Guam	—	0	0	—	—	—	0	1	—	—	—	0	0	—	—
Puerto Rico	N	0	0	N	N	—	0	1	—	1	—	0	1	—	3
U.S. Virgin Islands	N	0	0	N	N	—	0	0	—	—	—	0	0	—	—

C.N.M.I.: Commonwealth of Northern Mariana Islands.

U: Unavailable. —: No reported cases. N: Not notifiable. Cum: Cumulative year-to-date counts. Med: Median. Max: Maximum.

* Incidence data for reporting years 2007 and 2008 are provisional.

† Data for meningococcal disease, invasive caused by serogroups A, C, Y, & W-135; serogroup B; other serogroup; and unknown serogroup are available in Table I.

§ Contains data reported through the National Electronic Disease Surveillance System (NEDSS).

TABLE II. (Continued) Provisional cases of selected notifiable diseases, United States, weeks ending April 5, 2008, and April 7, 2007 (14th Week)*

Reporting area	Pertussis					Rabies, animal					Rocky Mountain spotted fever				
	Current week	Previous 52 weeks		Cum 2008	Cum 2007	Current week	Previous 52 weeks		Cum 2008	Cum 2007	Current week	Previous 52 weeks		Cum 2008	Cum 2007
		Med	Max				Med	Max				Med	Max		
United States	66	166	641	1,307	2,527	43	95	176	849	1,182	—	34	147	58	133
New England	—	19	45	32	404	3	9	22	65	117	—	0	1	—	1
Connecticut	—	0	5	—	19	—	4	10	37	51	—	0	0	—	—
Maine†	—	1	5	14	29	2	1	5	9	21	N	0	0	N	N
Massachusetts	—	13	33	—	321	N	0	0	N	N	—	0	1	—	1
New Hampshire	—	1	5	6	18	—	1	4	7	9	—	0	1	—	—
Rhode Island†	—	0	8	8	2	N	0	0	N	N	—	0	0	—	—
Vermont†	—	0	6	4	15	1	2	13	12	36	—	0	0	—	—
Mid. Atlantic	12	22	38	192	410	13	24	56	173	299	—	1	7	4	12
New Jersey	—	3	7	2	65	—	0	0	—	—	—	0	3	—	1
New York (Upstate)	4	8	24	63	201	13	9	20	87	91	—	0	1	—	—
New York City	—	2	7	15	44	—	0	5	5	18	—	0	3	1	6
Pennsylvania	8	7	22	112	100	—	11	44	81	190	—	0	3	3	5
E.N. Central	14	23	186	428	493	—	2	39	1	5	—	1	4	2	4
Illinois	—	2	8	13	62	N	0	0	N	N	—	1	3	1	2
Indiana	—	0	12	12	3	—	0	1	—	—	—	0	2	—	—
Michigan	1	3	16	38	100	—	1	28	—	4	—	0	1	—	1
Ohio	13	11	176	365	219	—	1	11	1	1	—	0	2	1	1
Wisconsin	—	0	16	—	109	N	0	0	N	N	—	0	0	—	—
W.N. Central	8	12	134	121	179	—	4	13	15	43	—	5	37	11	15
Iowa	—	2	8	20	49	—	0	3	2	5	—	0	4	—	1
Kansas	4	2	5	17	49	—	1	7	—	26	—	0	2	—	3
Minnesota	—	0	131	—	35	—	0	6	9	3	—	0	4	—	—
Missouri	1	2	16	67	19	—	0	3	—	2	—	5	29	11	11
Nebraska†	3	1	12	15	6	—	0	0	—	—	—	0	2	—	—
North Dakota	—	0	4	—	1	—	0	5	2	6	—	0	0	—	—
South Dakota	—	0	7	2	20	—	0	2	2	1	—	0	1	—	—
S. Atlantic	4	14	52	137	277	26	41	63	517	611	—	14	111	27	70
Delaware	—	0	2	1	1	—	0	0	—	—	—	0	2	1	5
District of Columbia	—	0	1	2	2	—	0	0	—	—	—	0	1	—	—
Florida	2	3	9	33	86	—	0	13	32	124	—	0	3	1	3
Georgia	—	0	3	2	13	—	5	31	87	54	—	0	6	3	4
Maryland†	—	2	5	19	45	12	9	18	110	93	—	1	6	7	10
North Carolina	1	4	38	40	69	14	9	19	121	121	—	4	96	11	36
South Carolina†	1	1	22	18	25	—	0	11	—	33	—	0	7	—	4
Virginia†	—	2	11	22	32	—	12	31	141	163	—	2	11	3	7
West Virginia	—	0	12	—	4	—	0	11	26	23	—	0	3	1	1
E.S. Central	3	6	35	52	73	1	3	7	31	34	—	5	16	6	27
Alabama†	—	1	6	15	22	—	0	0	—	—	—	1	10	3	10
Kentucky	—	0	4	6	3	1	0	3	5	6	—	0	2	—	—
Mississippi	—	3	32	20	14	—	0	1	1	—	—	0	3	1	1
Tennessee†	3	1	5	11	34	—	3	6	25	28	—	2	10	2	16
W.S. Central	1	20	112	46	127	—	1	23	13	18	—	1	30	6	2
Arkansas†	—	1	17	9	15	—	1	3	12	8	—	0	15	—	—
Louisiana	—	0	2	—	6	—	0	0	—	—	—	0	2	2	1
Oklahoma	1	0	26	2	—	—	0	22	1	10	—	0	20	—	—
Texas†	—	16	102	35	106	—	0	0	—	—	—	1	7	4	1
Mountain	14	19	40	170	346	—	2	8	10	1	—	0	4	1	1
Arizona	—	2	10	15	106	N	0	0	N	N	—	0	1	—	—
Colorado	1	5	14	28	88	—	0	0	—	—	—	0	2	—	—
Idaho†	1	0	4	7	11	—	0	4	—	—	—	0	1	—	1
Montana†	7	1	11	53	11	—	0	3	—	—	—	0	1	—	—
Nevada†	—	0	6	2	8	—	0	2	—	—	—	0	0	—	—
New Mexico†	—	1	7	2	13	—	0	2	8	—	—	0	1	1	—
Utah	5	5	27	63	96	—	0	2	—	1	—	0	0	—	—
Wyoming†	—	0	2	—	13	—	0	4	2	—	—	0	2	—	—
Pacific	10	16	243	129	218	—	4	10	24	54	—	0	2	1	1
Alaska	1	1	6	19	9	—	0	3	9	24	N	0	0	N	N
California	—	8	32	23	151	—	3	8	15	30	—	0	2	1	1
Hawaii	—	0	2	2	8	—	0	0	—	—	N	0	0	N	N
Oregon†	1	2	14	29	18	—	0	3	—	—	—	0	1	—	—
Washington	8	3	209	56	32	—	0	0	—	—	N	0	0	N	N
American Samoa	—	0	0	—	—	N	0	0	N	N	N	0	0	N	N
C.N.M.I.	—	—	—	—	—	—	—	—	—	—	—	—	—	—	—
Guam	—	0	0	—	—	—	0	0	—	—	N	0	0	N	N
Puerto Rico	—	0	1	—	—	—	0	5	8	15	N	0	0	N	N
U.S. Virgin Islands	—	0	0	—	—	N	0	0	N	N	N	0	0	N	N

C.N.M.I.: Commonwealth of Northern Mariana Islands.

U: Unavailable. —: No reported cases. N: Not notifiable. Cum: Cumulative year-to-date counts. Med: Median. Max: Maximum.

* Incidence data for reporting years 2007 and 2008 are provisional.

† Contains data reported through the National Electronic Disease Surveillance System (NEDSS).

TABLE II. (Continued) Provisional cases of selected notifiable diseases, United States, weeks ending April 5, 2008, and April 7, 2007 (14th Week)*

Reporting area	Salmonellosis					Shiga toxin-producing <i>E. coli</i> (STEC) [†]					Shigellosis				
	Current week	Previous 52 weeks		Cum 2008	Cum 2007	Current week	Previous 52 weeks		Cum 2008	Cum 2007	Current week	Previous 52 weeks		Cum 2008	Cum 2007
		Med	Max				Med	Max				Med	Max		
United States	311	864	1,931	6,117	8,311	77	77	230	701	550	202	359	1,078	3,443	2,823
New England	—	31	90	150	737	—	3	11	18	80	—	2	11	16	94
Connecticut	—	0	84	84	430	—	0	6	6	45	—	0	8	8	44
Maine [§]	—	2	14	28	26	—	0	4	4	8	—	0	4	1	8
Massachusetts	—	19	58	—	224	—	1	10	—	19	—	1	8	—	39
New Hampshire	—	3	10	11	26	—	0	4	5	6	—	0	1	1	2
Rhode Island [§]	—	1	15	17	19	—	0	2	1	—	—	0	9	5	1
Vermont [§]	—	1	5	10	12	—	0	3	2	2	—	0	1	1	—
Mid. Atlantic	22	108	190	667	1,149	49	9	195	276	78	18	20	154	302	142
New Jersey	—	19	48	29	233	—	1	7	—	22	—	4	13	50	24
New York (Upstate)	15	26	63	191	269	49	3	192	255	20	13	4	19	90	25
New York City	—	25	52	197	278	—	1	5	4	8	2	7	18	130	75
Pennsylvania	7	34	69	250	369	—	2	11	17	28	3	2	141	32	18
E.N. Central	17	104	255	638	1,103	5	9	35	48	70	28	57	134	627	276
Illinois	—	29	188	163	412	—	1	13	3	12	—	15	29	186	146
Indiana	—	10	34	48	94	—	2	12	5	2	—	5	82	210	13
Michigan	3	19	43	141	165	—	2	8	13	12	—	1	7	11	12
Ohio	14	25	64	212	228	5	2	9	21	30	28	19	104	191	62
Wisconsin	—	12	50	74	204	—	2	11	6	14	—	4	13	29	43
W.N. Central	22	49	103	458	531	5	12	38	68	55	9	26	80	200	486
Iowa	—	9	18	69	87	—	3	13	17	10	—	2	6	17	18
Kansas	3	7	20	45	82	1	0	4	4	5	—	0	3	4	8
Minnesota	2	13	39	127	121	1	3	15	14	20	1	4	10	35	72
Missouri	11	14	29	142	156	3	3	12	26	11	6	17	72	85	365
Nebraska [§]	5	5	13	52	36	—	2	6	4	9	—	0	3	—	5
North Dakota	1	0	9	6	8	—	0	1	—	—	—	0	5	16	6
South Dakota	—	3	11	17	41	—	0	5	3	—	2	1	30	43	12
S. Atlantic	104	228	435	1,878	2,163	8	14	38	121	116	62	82	153	858	918
Delaware	1	3	8	21	23	—	0	2	2	4	—	0	2	1	4
District of Columbia	—	0	4	12	8	1	0	1	1	—	—	0	4	8	3
Florida	53	87	181	913	910	3	3	18	46	31	21	34	75	266	584
Georgia	19	36	81	340	321	—	1	8	10	17	24	30	86	379	255
Maryland [§]	7	15	44	114	163	1	1	5	17	18	1	2	7	15	23
North Carolina	10	23	228	187	335	—	1	24	12	17	—	1	12	25	15
South Carolina [§]	14	18	51	162	173	3	0	3	11	2	16	6	20	145	13
Virginia [§]	—	22	50	96	201	—	3	9	17	26	—	3	14	19	20
West Virginia	—	4	25	33	29	—	0	3	5	1	—	0	62	—	1
E.S. Central	19	59	144	412	516	—	4	26	45	26	20	49	177	439	238
Alabama [§]	2	16	50	132	146	—	1	19	25	5	9	13	43	120	94
Kentucky	3	10	23	67	103	—	1	12	4	9	—	8	35	42	25
Mississippi	5	13	57	87	101	—	0	1	2	1	5	18	111	139	60
Tennessee [§]	9	17	34	126	166	—	2	12	14	11	6	7	32	138	59
W.S. Central	44	96	819	506	485	2	5	13	35	32	44	49	653	638	224
Arkansas [§]	9	13	50	70	70	1	0	3	6	7	10	2	11	59	18
Louisiana	—	16	44	54	109	—	0	0	—	3	—	8	22	44	80
Oklahoma	6	9	43	70	64	1	0	3	3	4	3	3	9	27	12
Texas [§]	29	52	772	312	242	—	3	11	26	18	31	34	631	508	114
Mountain	42	52	83	534	538	4	9	42	58	49	10	17	40	137	182
Arizona	8	17	39	171	187	1	2	8	20	15	3	10	30	69	87
Colorado	29	10	47	165	133	2	1	17	3	12	2	2	6	7	27
Idaho [§]	3	3	10	31	28	1	2	16	19	4	1	0	2	3	3
Montana [§]	1	1	10	14	25	—	0	3	3	—	—	0	2	—	6
Nevada [§]	1	5	12	44	58	—	0	3	2	4	4	1	10	44	11
New Mexico [§]	—	5	13	46	53	—	1	3	7	11	—	1	6	8	30
Utah	—	5	17	50	39	—	1	9	4	3	—	0	5	3	5
Wyoming [§]	—	1	5	13	15	—	0	0	—	—	—	0	5	3	13
Pacific	41	114	391	874	1,089	4	9	38	32	44	11	27	70	226	263
Alaska	—	1	5	8	23	—	0	1	—	—	—	0	1	—	6
California	26	85	230	679	857	1	5	33	18	26	6	22	61	193	216
Hawaii	—	5	14	42	59	—	0	4	2	3	—	0	3	7	11
Oregon [§]	2	6	16	63	67	—	1	11	3	7	—	1	6	10	12
Washington	13	11	152	82	83	3	1	17	9	8	5	2	21	16	18
American Samoa	—	0	1	1	—	—	0	0	—	—	—	0	1	1	1
C.N.M.I.	—	—	—	—	—	—	—	—	—	—	—	—	—	—	—
Guam	—	0	5	3	2	—	0	0	—	—	—	0	3	5	5
Puerto Rico	—	14	55	35	193	—	0	0	—	—	—	0	2	—	11
U.S. Virgin Islands	—	0	0	—	—	—	0	0	—	—	—	0	0	—	—

C.N.M.I.: Commonwealth of Northern Mariana Islands.

U: Unavailable. —: No reported cases. N: Not notifiable. Cum: Cumulative year-to-date counts. Med: Median. Max: Maximum.

* Incidence data for reporting years 2007 and 2008 are provisional.

† Includes *E. coli* O157:H7; Shiga toxin-positive, serogroup non-O157; and Shiga toxin-positive, not serogrouped.

§ Contains data reported through the National Electronic Disease Surveillance System (NEDSS).

TABLE II. (Continued) Provisional cases of selected notifiable diseases, United States, weeks ending April 5, 2008, and April 7, 2007 (14th Week)*

Reporting area	Streptococcal disease, invasive, group A					<i>Streptococcus pneumoniae</i> , invasive disease, nondrug resistant† Age <5 years				
	Current week	Previous 52 weeks		Cum 2008	Cum 2007	Current week	Previous 52 weeks		Cum 2008	Cum 2007
		Med	Max				Med	Max		
United States	78	94	197	1,621	1,699	26	32	147	454	513
New England	—	4	28	37	109	1	1	4	6	44
Connecticut	—	0	22	10	2	—	0	1	—	7
Maine§	—	0	3	9	7	—	0	1	1	—
Massachusetts	—	1	12	—	77	—	0	4	—	34
New Hampshire	—	0	4	10	13	1	0	1	5	—
Rhode Island§	—	0	3	3	—	—	0	1	—	2
Vermont§	—	0	2	5	10	—	0	1	—	1
Mid. Atlantic	23	17	40	319	349	4	6	38	54	70
New Jersey	—	3	11	35	70	—	1	6	12	19
New York (Upstate)	12	6	20	115	87	4	2	14	28	31
New York City	—	4	9	48	87	—	1	35	14	20
Pennsylvania	11	4	16	121	105	N	0	0	N	N
E.N. Central	14	16	56	356	330	4	5	20	97	77
Illinois	1	4	12	87	114	—	1	6	18	13
Indiana	—	2	11	44	32	—	0	12	12	4
Michigan	2	4	10	60	72	—	1	5	24	31
Ohio	10	4	14	100	93	3	1	5	20	23
Wisconsin	1	0	38	65	19	1	0	9	23	6
W.N. Central	4	6	39	149	112	1	2	22	40	30
Iowa	—	0	0	—	—	—	0	0	—	—
Kansas	—	0	6	25	14	1	0	2	5	1
Minnesota	—	0	35	55	48	—	1	21	13	14
Missouri	3	2	10	37	33	—	0	2	16	12
Nebraska§	1	0	3	16	5	—	0	3	2	2
North Dakota	—	0	3	7	9	—	0	0	—	1
South Dakota	—	0	2	9	3	—	0	1	4	—
S. Atlantic	17	23	49	359	377	6	5	10	72	105
Delaware	—	0	3	6	1	—	0	0	—	—
District of Columbia	—	0	4	11	4	—	0	1	2	—
Florida	7	6	16	86	77	3	1	4	20	18
Georgia	3	4	13	75	84	—	0	4	—	32
Maryland§	2	4	9	69	69	3	1	5	26	26
North Carolina	3	2	22	46	44	N	0	0	N	N
South Carolina§	2	1	7	21	34	—	1	4	16	9
Virginia§	—	2	12	33	58	—	0	3	5	18
West Virginia	—	0	3	12	6	—	0	1	3	2
E.S. Central	4	4	13	52	69	—	2	11	28	27
Alabama§	N	0	0	N	N	N	0	0	N	N
Kentucky	1	1	2	12	19	N	0	0	N	N
Mississippi	N	0	0	N	N	—	0	3	7	2
Tennessee§	3	3	13	40	50	—	2	9	21	25
W.S. Central	8	7	68	143	101	6	4	61	76	81
Arkansas§	—	0	1	2	10	—	0	2	3	6
Louisiana	—	0	2	3	12	—	0	2	—	20
Oklahoma	1	1	9	45	33	3	1	5	29	18
Texas§	7	5	59	93	46	3	3	56	44	37
Mountain	8	9	19	169	216	4	4	11	81	75
Arizona	5	4	9	68	73	—	2	8	49	39
Colorado	2	2	9	40	56	3	1	4	16	17
Idaho§	—	0	2	7	5	1	0	1	2	—
Montana§	N	0	0	N	N	—	0	1	—	—
Nevada§	—	0	1	2	2	N	0	0	N	N
New Mexico§	—	2	5	33	37	—	0	3	9	16
Utah	1	1	5	19	41	—	0	2	5	3
Wyoming§	—	0	1	—	2	—	0	0	—	—
Pacific	—	3	7	37	36	—	0	1	—	4
Alaska	—	0	3	10	5	N	0	0	N	N
California	—	0	0	—	—	N	0	0	N	N
Hawaii	—	2	5	27	31	—	0	1	—	4
Oregon§	N	0	0	N	N	N	0	0	N	N
Washington	N	0	0	N	N	N	0	0	N	N
American Samoa	12	0	4	12	—	N	0	0	N	N
C.N.M.I.	—	—	—	—	—	—	—	—	—	—
Guam	—	0	0	—	—	—	0	0	—	—
Puerto Rico	N	0	0	N	N	N	0	0	N	N
U.S. Virgin Islands	—	0	0	—	—	N	0	0	N	N

C.N.M.I.: Commonwealth of Northern Mariana Islands.

U: Unavailable. —: No reported cases. N: Not notifiable. Cum: Cumulative year-to-date counts. Med: Median. Max: Maximum.

* Incidence data for reporting years 2007 and 2008 are provisional.

† Includes cases of invasive pneumococcal disease, in children aged <5 years, caused by *S. pneumoniae*, which is susceptible or for which susceptibility testing is not available (NNDS event code 11717).

§ Contains data reported through the National Electronic Disease Surveillance System (NEDSS).

TABLE II. (Continued) Provisional cases of selected notifiable diseases, United States, weeks ending April 5, 2008, and April 7, 2007 (14th Week)*

Reporting area	<i>Streptococcus pneumoniae</i> , invasive disease, drug resistant†										Syphilis, primary and secondary				
	All ages				Age <5 years										
	Current week	Previous 52 weeks		Cum 2008	Cum 2007	Current week	Previous 52 weeks		Cum 2008	Cum 2007	Current week	Previous 52 weeks		Cum 2008	Cum 2007
		Med	Max				Med	Max				Med	Max		
United States	38	44	97	901	941	7	8	23	131	184	120	221	286	2,604	2,609
New England	—	1	6	11	55	—	0	2	2	5	3	6	14	67	51
Connecticut	—	0	4	—	35	—	0	1	—	4	—	0	6	3	7
Maine§	—	0	2	6	4	—	0	1	1	—	—	0	2	1	1
Massachusetts	—	0	0	—	—	—	0	0	—	—	3	3	10	58	33
New Hampshire	—	0	0	—	—	—	0	0	—	—	—	0	3	3	4
Rhode Island§	—	0	2	2	8	—	0	1	—	1	—	0	5	2	5
Vermont§	—	0	2	3	8	—	0	1	1	—	—	0	5	—	1
Mid. Atlantic	5	2	6	48	61	2	0	2	10	14	29	32	45	443	425
New Jersey	—	0	0	—	—	—	0	0	—	—	3	4	10	61	56
New York (Upstate)	2	1	4	13	21	—	0	1	2	7	2	3	10	29	30
New York City	—	0	0	—	—	—	0	0	—	—	19	18	29	284	270
Pennsylvania	3	1	5	35	40	2	0	2	8	7	5	5	12	69	69
E.N. Central	10	13	46	261	253	1	2	14	37	39	29	15	29	218	225
Illinois	—	2	13	43	52	—	0	6	9	17	—	6	14	27	107
Indiana	—	3	28	72	36	—	0	11	10	3	1	1	6	36	14
Michigan	—	0	1	3	—	—	0	1	1	—	25	2	12	54	33
Ohio	10	6	17	143	165	1	1	3	17	19	3	4	15	88	55
Wisconsin	—	0	0	—	—	—	0	0	—	—	—	1	3	13	16
W.N. Central	1	2	49	73	71	—	0	2	2	9	8	7	14	108	66
Iowa	—	0	0	—	—	—	0	0	—	—	—	0	2	1	2
Kansas	—	0	5	31	42	—	0	1	1	2	3	0	5	9	5
Minnesota	—	0	46	—	—	—	0	1	—	5	—	1	4	24	15
Missouri	1	1	8	42	25	—	0	1	1	—	5	5	11	72	44
Nebraska§	—	0	1	—	1	—	0	0	—	—	—	0	1	2	—
North Dakota	—	0	0	—	—	—	0	0	—	—	—	0	1	—	—
South Dakota	—	0	1	—	3	—	0	1	—	2	—	0	3	—	—
S. Atlantic	19	19	45	380	409	4	4	11	59	98	26	49	152	525	529
Delaware	—	0	1	1	2	—	0	1	—	1	—	0	3	1	2
District of Columbia	—	0	3	11	4	—	0	0	—	—	1	2	10	25	50
Florida	9	11	27	208	227	2	2	7	36	54	11	17	35	219	156
Georgia	10	5	17	136	159	2	1	5	18	38	—	7	131	11	61
Maryland§	—	0	2	3	—	—	0	1	1	—	4	6	15	89	77
North Carolina	N	0	0	N	N	N	0	0	N	N	—	5	18	83	98
South Carolina§	—	0	0	—	—	—	0	0	—	—	4	1	11	22	25
Virginia§	N	0	0	N	N	N	0	0	N	N	6	4	16	75	57
West Virginia	—	1	12	21	17	—	0	2	4	5	—	0	1	—	3
E.S. Central	2	4	12	102	50	—	1	4	13	11	12	20	31	273	192
Alabama§	N	0	0	N	N	N	0	0	N	N	—	8	17	115	66
Kentucky	1	0	3	19	11	—	0	2	4	1	6	1	4	20	23
Mississippi	—	0	0	—	—	—	0	0	—	—	—	2	15	26	30
Tennessee§	1	3	12	83	39	—	0	3	9	10	6	8	15	112	73
W.S. Central	1	1	5	20	32	—	0	2	5	2	6	40	56	480	403
Arkansas§	1	0	1	4	1	—	0	1	2	—	—	2	10	23	31
Louisiana	—	1	4	16	31	—	0	2	3	2	6	11	22	88	92
Oklahoma	N	0	0	N	N	N	0	0	N	N	—	1	5	17	21
Texas§	—	0	0	—	—	—	0	0	—	—	—	26	46	352	259
Mountain	—	1	5	6	10	—	0	2	2	6	1	9	28	52	114
Arizona	—	0	0	—	—	—	0	0	—	—	—	5	20	2	52
Colorado	—	0	0	—	—	—	0	0	—	—	1	1	7	22	14
Idaho§	N	0	0	N	N	N	0	0	N	N	—	0	1	1	1
Montana§	—	0	0	—	—	—	0	0	—	—	—	0	3	—	1
Nevada§	N	0	0	N	N	N	0	0	N	N	—	2	6	19	26
New Mexico§	—	0	1	—	—	—	0	0	—	—	—	1	3	8	15
Utah	—	0	5	6	7	—	0	2	2	5	—	0	2	—	4
Wyoming§	—	0	2	—	3	—	0	1	—	1	—	0	1	—	1
Pacific	—	0	0	—	—	—	0	1	1	—	6	42	62	438	604
Alaska	N	0	0	N	N	N	0	0	N	N	—	0	1	—	2
California	N	0	0	N	N	N	0	0	N	N	2	38	58	377	564
Hawaii	—	0	0	—	—	—	0	1	1	—	—	0	2	7	1
Oregon§	N	0	0	N	N	N	0	0	N	N	—	0	2	5	4
Washington	N	0	0	N	N	N	0	0	N	N	4	3	13	49	33
American Samoa	N	0	0	N	N	N	0	1	N	N	—	0	4	—	—
C.N.M.I.	—	—	—	—	—	—	—	—	—	—	—	—	—	—	—
Guam	—	0	0	—	—	—	0	0	—	—	—	0	0	—	—
Puerto Rico	—	0	0	—	—	—	0	0	—	—	1	2	10	34	34
U.S. Virgin Islands	—	0	0	—	—	—	0	0	—	—	—	0	0	—	—

C.N.M.I.: Commonwealth of Northern Mariana Islands.

U: Unavailable. —: No reported cases. N: Not notifiable. Cum: Cumulative year-to-date counts. Med: Median. Max: Maximum.

* Incidence data for reporting years 2007 and 2008 are provisional.

† Includes cases of invasive pneumococcal disease caused by drug-resistant *S. pneumoniae* (DRSP) (NNDSS event code 11720).

§ Contains data reported through the National Electronic Disease Surveillance System (NEDSS).

TABLE II. (Continued) Provisional cases of selected notifiable diseases, United States, weeks ending April 5, 2008, and April 7, 2007 (14th Week)*

Reporting area	Varicella (chickenpox)					West Nile virus disease†									
	Current week	Previous 52 weeks		Cum 2008	Cum 2007	Neuroinvasive					Nonneuroinvasive§				
		Med	Max			Current week	Med	Max	Cum 2008	Cum 2007	Current week	Med	Max	Cum 2008	Cum 2007
United States	749	607	1,350	8,188	13,006	—	1	141	—	4	—	2	299	—	1
New England	5	12	47	149	202	—	0	2	—	—	—	0	2	—	—
Connecticut	—	0	1	—	1	—	0	2	—	—	—	0	1	—	—
Maine¶	—	0	0	—	—	—	0	0	—	—	—	0	0	—	—
Massachusetts	—	0	0	—	—	—	0	2	—	—	—	0	2	—	—
New Hampshire	3	6	18	70	104	—	0	0	—	—	—	0	0	—	—
Rhode Island¶	—	0	0	—	—	—	0	0	—	—	—	0	1	—	—
Vermont¶	2	6	38	79	97	—	0	0	—	—	—	0	0	—	—
Mid. Atlantic	67	62	137	674	1,811	—	0	3	—	—	—	0	3	—	—
New Jersey	N	0	0	N	N	—	0	1	—	—	—	0	0	—	—
New York (Upstate)	N	0	0	N	N	—	0	1	—	—	—	0	1	—	—
New York City	N	0	0	N	N	—	0	3	—	—	—	0	3	—	—
Pennsylvania	67	62	137	674	1,811	—	0	1	—	—	—	0	1	—	—
E.N. Central	91	155	358	1,753	3,977	—	0	18	—	—	—	0	12	—	1
Illinois	8	3	19	105	65	—	0	13	—	—	—	0	8	—	—
Indiana	—	0	222	—	—	—	0	4	—	—	—	0	2	—	—
Michigan	28	65	154	778	1,579	—	0	5	—	—	—	0	0	—	—
Ohio	54	63	208	869	1,889	—	0	4	—	—	—	0	3	—	1
Wisconsin	1	6	80	1	444	—	0	2	—	—	—	0	2	—	—
W.N. Central	13	24	92	404	667	—	0	41	—	—	—	1	117	—	—
Iowa	N	0	0	N	N	—	0	4	—	—	—	0	3	—	—
Kansas	—	6	36	196	304	—	0	3	—	—	—	0	7	—	—
Minnesota	—	0	0	—	—	—	0	9	—	—	—	0	12	—	—
Missouri	13	12	78	194	253	—	0	9	—	—	—	0	3	—	—
Nebraska¶	N	0	0	N	N	—	0	5	—	—	—	0	15	—	—
North Dakota	—	0	1	1	84	—	0	11	—	—	—	0	49	—	—
South Dakota	—	1	14	13	26	—	0	9	—	—	—	0	32	—	—
S. Atlantic	91	94	182	1,389	1,789	—	0	12	—	—	—	0	6	—	—
Delaware	—	1	4	5	11	—	0	1	—	—	—	0	0	—	—
District of Columbia	—	0	8	8	—	—	0	0	—	—	—	0	0	—	—
Florida	47	26	87	631	385	—	0	1	—	—	—	0	0	—	—
Georgia	N	0	0	N	N	—	0	8	—	—	—	0	5	—	—
Maryland¶	N	0	0	N	N	—	0	2	—	—	—	0	2	—	—
North Carolina	N	0	0	N	N	—	0	1	—	—	—	0	1	—	—
South Carolina¶	12	14	51	242	506	—	0	2	—	—	—	0	1	—	—
Virginia¶	—	19	80	245	453	—	0	1	—	—	—	0	1	—	—
West Virginia	32	17	66	258	434	—	0	0	—	—	—	0	0	—	—
E.S. Central	21	14	82	347	154	—	0	11	—	4	—	0	14	—	—
Alabama¶	21	14	82	345	152	—	0	2	—	—	—	0	1	—	—
Kentucky	N	0	0	N	N	—	0	1	—	—	—	0	0	—	—
Mississippi	—	0	1	2	2	—	0	7	—	3	—	0	12	—	—
Tennessee¶	N	0	0	N	N	—	0	1	—	1	—	0	2	—	—
W.S. Central	386	172	839	2,915	3,366	—	0	34	—	—	—	0	18	—	—
Arkansas¶	2	13	46	197	208	—	0	5	—	—	—	0	2	—	—
Louisiana	—	1	8	20	53	—	0	5	—	—	—	0	3	—	—
Oklahoma	N	0	0	N	N	—	0	11	—	—	—	0	7	—	—
Texas¶	384	159	822	2,698	3,105	—	0	18	—	—	—	0	10	—	—
Mountain	73	35	130	546	1,020	—	0	36	—	—	—	1	143	—	—
Arizona	—	0	0	—	—	—	0	8	—	—	—	0	10	—	—
Colorado	15	13	62	173	381	—	0	17	—	—	—	0	65	—	—
Idaho¶	N	0	0	N	N	—	0	3	—	—	—	0	22	—	—
Montana¶	12	6	40	125	126	—	0	10	—	—	—	0	30	—	—
Nevada¶	N	0	0	N	N	—	0	1	—	—	—	0	3	—	—
New Mexico¶	—	4	37	52	145	—	0	8	—	—	—	0	6	—	—
Utah	46	7	72	195	358	—	0	8	—	—	—	0	8	—	—
Wyoming¶	—	0	9	1	10	—	0	4	—	—	—	0	33	—	—
Pacific	2	0	4	11	20	—	0	18	—	—	—	0	23	—	—
Alaska	2	0	4	11	20	—	0	0	—	—	—	0	0	—	—
California	—	0	0	—	—	—	0	17	—	—	—	0	21	—	—
Hawaii	—	0	0	—	—	—	0	0	—	—	—	0	0	—	—
Oregon¶	N	0	0	N	N	—	0	3	—	—	—	0	4	—	—
Washington	N	0	0	N	N	—	0	0	—	—	—	0	0	—	—
American Samoa	N	0	0	N	N	—	0	0	—	—	—	0	0	—	—
C.N.M.I.	—	—	—	—	—	—	—	—	—	—	—	—	—	—	—
Guam	—	3	19	18	86	—	0	0	—	—	—	0	0	—	—
Puerto Rico	—	11	37	55	216	—	0	0	—	—	—	0	0	—	—
U.S. Virgin Islands	—	0	0	—	—	—	0	0	—	—	—	0	0	—	—

C.N.M.I.: Commonwealth of Northern Mariana Islands.

U: Unavailable. —: No reported cases. N: Not notifiable. Cum: Cumulative year-to-date counts. Med: Median. Max: Maximum.

* Incidence data for reporting years 2007 and 2008 are provisional.

† Updated weekly from reports to the Division of Vector-Borne Infectious Diseases, National Center for Zoonotic, Vector-Borne, and Enteric Diseases (ArboNET Surveillance). Data for California serogroup, eastern equine, Powassan, St. Louis, and western equine diseases are available in Table I.

§ Not notifiable in all states. Data from states where the condition is not notifiable are excluded from this table, except in 2007 for the domestic arboviral diseases and influenza-associated pediatric mortality, and in 2003 for SARS-CoV. Reporting exceptions are available at <http://www.cdc.gov/epo/dphsi/phs/infdis.htm>.

¶ Contains data reported through the National Electronic Disease Surveillance System (NEDSS).

TABLE III. Deaths in 122 U.S. cities,* week ending April 5, 2008 (14th Week)

Reporting Area	All causes, by age (years)							P&I† Total	Reporting Area	All causes, by age (years)							P&I† Total
	All Ages	>65	45-64	25-44	1-24	<1	All Ages			>65	45-64	25-44	1-24	<1			
New England	572	409	120	18	9	16	74	S. Atlantic	1,304	801	328	93	32	49	80		
Boston, MA	145	94	37	4	4	6	18	Atlanta, GA	140	70	29	13	6	22	7		
Bridgeport, CT	37	24	13	—	—	—	5	Baltimore, MD	146	91	32	14	3	6	19		
Cambridge, MA	12	12	—	—	—	—	1	Charlotte, NC	141	98	31	7	1	4	17		
Fall River, MA	29	23	5	1	—	—	5	Jacksonville, FL	206	133	53	10	7	2	10		
Hartford, CT	53	34	13	3	2	1	5	Miami, FL	111	63	31	10	5	2	6		
Lowell, MA	33	22	7	1	—	3	3	Norfolk, VA	58	41	14	—	—	3	3		
Lynn, MA	7	5	1	—	1	—	1	Richmond, VA	67	30	24	11	1	1	2		
New Bedford, MA	21	17	4	—	—	—	4	Savannah, GA	65	45	13	4	1	2	2		
New Haven, CT	49	34	10	—	1	4	6	St. Petersburg, FL	56	37	10	7	1	1	3		
Providence, RI	60	49	10	1	—	—	7	Tampa, FL	196	128	53	9	2	4	7		
Somerville, MA	3	3	—	—	—	—	1	Washington, D.C.	103	53	37	7	4	2	1		
Springfield, MA	39	23	9	5	1	1	4	Wilmington, DE	15	12	1	1	1	—	3		
Waterbury, CT	24	18	5	—	—	1	2	E.S. Central	948	655	209	47	23	14	101		
Worcester, MA	60	51	6	3	—	—	12	Birmingham, AL	232	160	51	12	6	3	30		
Mid. Atlantic	2,419	1,660	530	135	38	53	171	Chattanooga, TN	73	49	14	6	3	1	11		
Albany, NY	49	35	6	5	—	3	5	Knoxville, TN	106	71	25	8	1	1	8		
Allentown, PA	37	30	5	2	—	—	1	Lexington, KY	42	26	8	4	2	2	3		
Buffalo, NY	78	52	17	7	—	2	6	Memphis, TN	175	133	37	2	2	1	17		
Camden, NJ	22	11	5	2	1	3	2	Mobile, AL	82	57	17	3	3	2	3		
Elizabeth, NJ	19	15	4	—	—	—	5	Montgomery, AL	64	36	21	6	1	—	13		
Erie, PA	62	49	10	3	—	—	8	Nashville, TN	174	123	36	6	5	4	16		
Jersey City, NJ	41	26	12	3	—	—	5	W.S. Central	1,683	1,089	409	94	37	54	127		
New York City, NY	1,151	806	236	57	20	30	58	Austin, TX	92	68	18	3	1	2	12		
Newark, NJ	64	33	21	4	1	4	4	Baton Rouge, LA	33	18	4	2	2	7	—		
Paterson, NJ	23	14	6	2	1	—	3	Corpus Christi, TX	77	51	22	2	1	1	9		
Philadelphia, PA	458	277	126	36	12	7	30	Dallas, TX	178	107	41	15	3	12	7		
Pittsburgh, PA‡	U	U	U	U	U	U	U	El Paso, TX	75	51	18	2	3	1	4		
Reading, PA	36	27	6	3	—	—	1	Fort Worth, TX	127	89	29	2	1	6	11		
Rochester, NY	122	93	22	4	2	1	19	Houston, TX	450	263	131	37	9	10	32		
Schenectady, NY	33	25	8	—	—	—	5	Little Rock, AR	98	71	19	6	2	—	2		
Scranton, PA	36	25	10	1	—	—	—	New Orleans, LA†	U	U	U	U	U	U	U		
Syracuse, NY	129	100	22	3	1	3	18	San Antonio, TX	301	204	70	12	5	10	24		
Trenton, NJ	28	20	7	1	—	—	—	Shreveport, LA	122	80	30	7	2	3	14		
Utica, NY	10	7	2	1	—	—	1	Tulsa, OK	130	87	27	6	8	2	12		
Yonkers, NY	21	15	5	1	—	—	—	Mountain	1,215	835	252	75	23	30	111		
E.N. Central	2,200	1,493	523	113	33	38	206	Albuquerque, NM	134	96	22	12	3	1	9		
Akron, OH	57	33	19	2	1	2	3	Boise, ID	47	38	7	1	—	1	4		
Canton, OH	47	39	8	—	—	—	6	Colorado Springs, CO	64	40	18	6	—	—	5		
Chicago, IL	328	191	87	38	6	6	23	Denver, CO	130	86	28	6	2	8	11		
Cincinnati, OH	78	49	17	3	1	8	12	Las Vegas, NV	287	203	63	15	4	2	23		
Cleveland, OH	252	176	58	12	3	3	16	Ogden, UT	35	27	7	—	—	1	1		
Columbus, OH	253	165	64	13	3	8	25	Phoenix, AZ	175	100	41	19	5	10	11		
Dayton, OH	146	107	38	1	—	—	16	Pueblo, CO	34	23	8	3	—	—	5		
Detroit, MI	185	105	58	16	3	3	13	Salt Lake City, UT	113	84	14	8	3	4	16		
Evansville, IN	38	32	5	—	1	—	6	Tucson, AZ	196	138	44	5	6	3	26		
Fort Wayne, IN	66	50	14	1	1	—	2	Pacific	1,698	1,225	329	83	35	26	195		
Gary, IN	13	8	4	1	—	—	2	Berkeley, CA	17	11	4	2	—	—	1		
Grand Rapids, MI	65	49	10	3	2	1	7	Fresno, CA	110	77	21	6	5	1	7		
Indianapolis, IN	204	134	50	13	5	2	26	Glendale, CA	21	18	1	2	—	—	6		
Lansing, MI	50	36	11	2	1	—	4	Honolulu, HI	80	55	11	8	2	4	13		
Milwaukee, WI	85	61	19	3	2	—	13	Long Beach, CA	59	41	12	3	2	1	14		
Peoria, IL	59	42	13	1	3	—	11	Los Angeles, CA	256	176	62	12	5	1	36		
Rockford, IL	58	47	9	1	—	1	7	Pasadena, CA	24	17	6	1	—	—	4		
South Bend, IN	58	39	16	—	—	3	2	Portland, OR	119	87	21	5	4	2	11		
Toledo, OH	76	60	13	2	1	—	7	Sacramento, CA	192	146	35	7	1	3	28		
Youngstown, OH	82	70	10	1	—	1	5	San Diego, CA	176	132	31	6	3	4	18		
W.N. Central	711	474	164	47	11	13	73	San Francisco, CA	121	82	23	9	6	1	12		
Des Moines, IA	53	37	9	6	1	—	2	San Jose, CA	192	138	41	7	1	5	18		
Duluth, MN	32	23	8	1	—	—	2	Santa Cruz, CA	24	20	4	—	—	—	3		
Kansas City, KS	27	20	5	2	—	—	3	Seattle, WA	117	90	18	3	3	3	8		
Kansas City, MO	110	70	30	6	1	2	10	Spokane, WA	75	58	9	7	1	—	11		
Lincoln, NE	36	29	5	2	—	—	9	Tacoma, WA	115	77	30	5	2	1	5		
Minneapolis, MN	68	45	17	3	—	3	11	Total	12,750**	8,641	2,864	705	241	293	1,138		
Omaha, NE	113	82	18	4	5	4	14										
St. Louis, MO	154	87	45	13	4	4	14										
St. Paul, MN	50	37	8	5	—	—	3										
Wichita, KS	68	44	19	5	—	—	5										

U: Unavailable. —:No reported cases.

* Mortality data in this table are voluntarily reported from 122 cities in the United States, most of which have populations of \geq 100,000. A death is reported by the place of its occurrence and by the week that the death certificate was filed. Fetal deaths are not included.

† Pneumonia and influenza.

‡ Because of changes in reporting methods in this Pennsylvania city, these numbers are partial counts for the current week. Complete counts will be available in 4 to 6 weeks.

§ Because of Hurricane Katrina, weekly reporting of deaths has been temporarily disrupted.

** Total includes unknown ages.

**TABLE IV. Provisional cases of selected notifiable disease,*
United States, quarter ending March 29, 2008 (13th Week)**

Reporting area	Tuberculosis				
	Current quarter	Previous 4 quarters		Cum 2008	Cum 2007
		Min	Max		
United States	1,157	1,157	3,085	1,157	2,557
New England	24	24	44	24	56
Connecticut	21	21	29	21	30
Maine	—	0	8	—	3
Massachusetts	—	0	0	—	—
New Hampshire	3	2	4	3	3
Rhode Island	—	0	8	—	19
Vermont	—	0	1	—	1
Mid. Atlantic	402	402	539	402	379
New Jersey	58	58	152	58	80
New York (Upstate)	48	47	99	48	48
New York City	206	206	250	206	205
Pennsylvania	90	72	90	90	46
E.N. Central	110	110	295	110	232
Illinois	55	55	137	55	121
Indiana	—	0	0	—	7
Michigan	3	3	74	3	38
Ohio	47	47	71	47	52
Wisconsin	5	5	29	5	14
W.N. Central	76	76	132	76	100
Iowa	13	1	13	13	7
Kansas	—	0	18	—	19
Minnesota	29	29	73	29	45
Missouri	20	20	32	20	26
Nebraska	12	7	12	12	1
North Dakota	—	0	0	—	—
South Dakota	2	2	6	2	2
S. Atlantic	180	180	705	180	676
Delaware	—	0	7	—	5
District of Columbia	18	0	18	18	11
Florida	39	39	288	39	213
Georgia	40	40	177	40	274
Maryland	42	42	75	42	55
North Carolina	—	0	117	—	61
South Carolina	—	0	12	—	16
Virginia	33	33	125	33	37
West Virginia	8	6	8	8	4
E.S. Central	93	93	226	93	112
Alabama	33	33	50	33	41
Kentucky	2	2	42	2	17
Mississippi	17	17	46	17	22
Tennessee	41	41	88	41	32
W.S. Central	116	116	472	116	401
Arkansas	8	8	33	8	21
Louisiana	—	0	0	—	—
Oklahoma	20	20	44	20	39
Texas	88	88	416	88	341
Mountain	32	32	196	32	75
Arizona	17	17	158	17	14
Colorado	3	0	9	3	17
Idaho	—	0	0	—	—
Montana	—	0	0	—	—
Nevada	—	0	0	—	16
New Mexico	9	4	17	9	14
Utah	3	3	12	3	14
Wyoming	—	0	0	—	—
Pacific	124	124	815	124	526
Alaska	11	11	15	11	10
California	94	94	704	94	419
Hawaii	19	19	37	19	32
Oregon	—	0	0	—	—
Washington	—	0	70	—	65
American Samoa	—	0	3	—	—
C.N.M.I.	—	—	—	—	—
Guam	—	0	0	—	—
Puerto Rico	—	0	35	—	6
U.S. Virgin Islands	—	0	0	—	—

C.N.M.I.: Commonwealth of Northern Mariana Islands.

U: Unavailable. —: No reported cases. N: Not notifiable.

Cum: Cumulative year-to-date counts. Min: Minimum. Max: Maximum.

* AIDS and HIV/AIDS data are not updated for this quarter because of upgrading of the national HIV/AIDS surveillance data management system.

The *Morbidity and Mortality Weekly Report (MMWR)* Series is prepared by the Centers for Disease Control and Prevention (CDC) and is available free of charge in electronic format. To receive an electronic copy each week, send an e-mail message to listserv@listserv.cdc.gov. The body content should read *SUBscribe mmwr-toc*. Electronic copy also is available from CDC's Internet server at <http://www.cdc.gov/mmwr> or from CDC's file transfer protocol server at <ftp://ftp.cdc.gov/pub/publications/mmwr>. Paper copy subscriptions are available through the Superintendent of Documents, U.S. Government Printing Office, Washington, DC 20402; telephone 202-512-1800.

Data in the weekly *MMWR* are provisional, based on weekly reports to CDC by state health departments. The reporting week concludes at close of business on Friday; compiled data on a national basis are officially released to the public on the following Friday. Data are compiled in the National Center for Public Health Informatics, Division of Integrated Surveillance Systems and Services. Address all inquiries about the *MMWR* Series, including material to be considered for publication, to Editor, *MMWR* Series, Mailstop E-90, CDC, 1600 Clifton Rd., N.E., Atlanta, GA 30333 or to www.mmwrq@cdc.gov.

All material in the *MMWR* Series is in the public domain and may be used and reprinted without permission; citation as to source, however, is appreciated.

Use of trade names and commercial sources is for identification only and does not imply endorsement by the U.S. Department of Health and Human Services.

References to non-CDC sites on the Internet are provided as a service to *MMWR* readers and do not constitute or imply endorsement of these organizations or their programs by CDC or the U.S. Department of Health and Human Services. CDC is not responsible for the content of these sites. URL addresses listed in *MMWR* were current as of the date of publication.