



MMWR™

Morbidity and Mortality Weekly Report

www.cdc.gov/mmwr

Weekly

November 9, 2007 / Vol. 56 / No. 44

Great American Smokeout — November 15, 2007

In 2006, approximately 45.3 million (one in five) U.S. adults were current smokers (1). November 15, 2007, marks the American Cancer Society's 31st annual Great American Smokeout, an event designed to encourage cigarette smokers to quit smoking for at least 1 day so that they might quit permanently. Smoking cessation has substantial and immediate health benefits for men and women of all ages (2).

Smokers who use effective cessation aids such as clinician assistance, pharmacotherapy approved by the Food and Drug Administration, and behavioral counseling (e.g., quitlines) can increase their likelihood of quitting permanently (3). All 50 states, the District of Columbia, and certain U.S. territories have quitlines that can be reached at 800-QUIT-NOW (800-784-8669). Other interventions that increase cessation include implementing sustained media campaigns, reducing patient out-of-pocket treatment costs, increasing the price of tobacco products, and establishing smoke-free environments (4).

Information on the Great American Smokeout is available at http://www.cancer.org/docroot/ped/ped_10_4.asp or by telephone: 800-227-2345. Advice on how to quit smoking is available at <http://www.smokefree.gov>.

References

1. CDC. Cigarette smoking among adults—United States, 2006. *MMWR* 2007;56:1157–61.
2. US Department of Health and Human Services. The health benefits of smoking cessation: a report of the Surgeon General. Rockville, MD: US Department of Health and Human Services, CDC; 1990.
3. Fiore MC, Bailey WC, Cohen SJ, et al. Treating tobacco use and dependence: clinical practice guidelines. Rockville, MD: US Department of Health and Human Services, Public Health Service; 2000. AHQR publication no. 00-0032.
4. CDC. The guide to community preventive services: tobacco. Atlanta, GA: US Department of Health and Human Services, CDC; 2006. Available at <http://www.thecommunityguide.org/tobacco>.

Cigarette Smoking Among Adults — United States, 2006

One of the national health objectives for 2010 is to reduce the prevalence of cigarette smoking among adults to $\leq 12\%$ (objective 7-1a) (1). To assess progress toward achieving this objective, CDC analyzed data from the 2006 National Health Interview Survey (NHIS). This report summarizes the results of that analysis, which indicated that in 2006, approximately 20.8% of U.S. adults were current cigarette smokers. This prevalence had not changed significantly since 2004 (2), suggesting a stall in the previous 7-year (1997–2004) decline in cigarette smoking among adults in the United States. In addition, the findings indicated that persons with a diagnosis of a smoking-related chronic disease have a significantly higher prevalence of being a current smoker than persons with other chronic diseases or persons with no chronic disease. To reduce smoking prevalence further in the United States, comprehensive, evidence-based approaches for preventing smoking initiation and increasing cessation, including clinical interventions for populations at high risk, need to be fully implemented (3).

The 2006 NHIS adult core questionnaire, containing questions on cigarette smoking and cessation attempts, was administered by in-person interview to a nationally representative sample of 24,275 persons in the noninstitutionalized U.S. civilian population aged ≥ 18 years; the overall response rate was 70.8%. To classify smoking status, respondents were asked, "Have you smoked at least 100 cigarettes in your entire life?"; Those who

INSIDE

- 1161 [Salmonella Typhimurium Infection Associated with Raw Milk and Cheese Consumption — Pennsylvania, 2007](#)
- 1164 [Syringe Exchange Programs — United States, 2005](#)
- 1167 [Notices to Readers](#)

The *MMWR* series of publications is published by the Coordinating Center for Health Information and Service, Centers for Disease Control and Prevention (CDC), U.S. Department of Health and Human Services, Atlanta, GA 30333.

Suggested Citation: Centers for Disease Control and Prevention. [Article title]. *MMWR* 2007;56:[inclusive page numbers].

Centers for Disease Control and Prevention

Julie L. Gerberding, MD, MPH
Director

Tanja Popovic, MD, PhD
Chief Science Officer

James W. Stephens, PhD
Associate Director for Science

Steven L. Solomon, MD
Director, Coordinating Center for Health Information and Service

Jay M. Bernhardt, PhD, MPH
Director, National Center for Health Marketing

Katherine L. Daniel, PhD
Deputy Director, National Center for Health Marketing

Editorial and Production Staff

Frederic E. Shaw, MD, JD
Editor, MMWR Series

Suzanne M. Hewitt, MPA
Managing Editor, MMWR Series

Douglas W. Weatherwax
Lead Technical Writer-Editor

Catherine H. Bricker, MS
Jude C. Rutledge
Writers-Editors

Beverly J. Holland
Lead Visual Information Specialist

Lynda G. Cupell
Malbea A. LaPete
Visual Information Specialists

Quang M. Doan, MBA
Erica R. Shaver
Information Technology Specialists

Editorial Board

William L. Roper, MD, MPH, Chapel Hill, NC, Chairman
Virginia A. Caine, MD, Indianapolis, IN
David W. Fleming, MD, Seattle, WA
William E. Halperin, MD, DrPH, MPH, Newark, NJ
Margaret A. Hamburg, MD, Washington, DC
King K. Holmes, MD, PhD, Seattle, WA
Deborah Holtzman, PhD, Atlanta, GA
John K. Iglehart, Bethesda, MD
Dennis G. Maki, MD, Madison, WI
Sue Mallonee, MPH, Oklahoma City, OK
Stanley A. Plotkin, MD, Doylestown, PA
Patricia Quinlisk, MD, MPH, Des Moines, IA
Patrick L. Remington, MD, MPH, Madison, WI
Barbara K. Rimer, DrPH, Chapel Hill, NC
John V. Rullan, MD, MPH, San Juan, PR
Anne Schuchat, MD, Atlanta, GA
Dixie E. Snider, MD, MPH, Atlanta, GA
John W. Ward, MD, Atlanta, GA

answered “yes” were asked, “Do you now smoke cigarettes every day, some days, or not at all?” Ever smokers were defined as those who reported having smoked at least 100 cigarettes during their lifetimes. Current smokers were those who had smoked at least 100 cigarettes during their lifetimes and, at the time of the interview, reported smoking every day or some days. Former smokers were those who reported smoking at least 100 cigarettes during their lifetimes but currently did not smoke. Never smokers were those who reported never having smoked 100 cigarettes during their lifetimes. Among current cigarette smokers, making at least one cessation attempt during the preceding year was defined as a “yes” response to the question, “During the past 12 months, have you stopped smoking for more than one day because you were trying to quit smoking?” Respondents were categorized as having a chronic disease if they answered “yes” to any one of a series of questions about 42 chronic diseases (i.e., “Have you ever been told by a doctor or other health professional that you had...?”); of these chronic diseases, 16 were considered to be smoking related* (4). Data were adjusted for nonresponse and weighted to provide national estimates of cigarette smoking prevalence. Because the distribution of smoking-related morbidity varies by age, estimates of current, former, and never smokers by chronic disease status were age adjusted to the 2000 U.S. adult population; 95% confidence intervals were calculated using statistical analysis software to account for the survey’s multistage probability sample design. Statistical significance was determined by non-overlapping confidence intervals.

In 2006, an estimated 20.8% (45.3 million) of U.S. adults were current cigarette smokers; of these, 80.1% (36.3 million) smoked every day, and 19.9% (9.0 million) smoked some days. Among current cigarette smokers, an estimated 44.2% (19.9 million) had stopped smoking for more than 1 day during the preceding 12 months because they were trying to quit. Of the estimated 91 million persons who had smoked at least 100 cigarettes during their lifetimes (i.e., ever smokers), 50.2% (45.7 million) had quit smoking at the time of the interview.

The prevalence of current cigarette smoking varied substantially among population subgroups. By sex, prevalence was higher among men (23.9%) than women (18.0%) (Table 1). Among racial/ethnic groups, Asians had the

* Cigarette smoking has been identified by the Surgeon General as a cause of selected malignant neoplasms, cardiovascular diseases, and respiratory diseases (4). Smoking-related chronic diseases include 1) cancers: lung; bladder; cervix; esophagus; kidney; larynx-windpipe; mouth, tongue, or lip; pancreas; stomach; and throat-pharynx; 2) cardiovascular diseases: coronary heart disease, angina pectoris, heart attack, and stroke; and 3) respiratory diseases: emphysema and chronic bronchitis.

TABLE 1. Estimated percentage of persons aged ≥18 years who were current smokers,* by sex and selected characteristics — National Health Interview Survey, United States, 2006

| Characteristic | Men (n = 10,715) | | Women (n = 13,560) | | Total (N = 24,275) | |
|--|---------------------|-----------------------|-----------------------|--------------------|-----------------------|--------------------|
| | % | (95% CI) [†] | % | (95% CI) | % | (95% CI) |
| Race/Ethnicity[§] | | | | | | |
| White, non-Hispanic | 24.3 | (23.0–25.6) | 19.7 | (18.6–20.8) | 21.9 | (21.0–22.8) |
| Black, non-Hispanic | 27.6 | (24.2–31.0) | 19.2 | (17.3–21.1) | 23.0 | (21.1–24.9) |
| Hispanic | 20.1 | (17.8–22.4) | 10.1 | (8.5–11.7) | 15.2 | (13.7–16.7) |
| American Indian/Alaska Native, non-Hispanic [¶] | 35.6 | (18.7–52.5) | 29.0 | (15.7–42.3) | 32.4 | (19.7–45.1) |
| Asian, non-Hispanic ^{**} | 16.8 | (13.1–20.5) | 4.6 | (3.0–6.2) | 10.4 | (8.4–12.4) |
| Education (yrs)^{††} | | | | | | |
| 0–12 (no diploma) | 30.6 | (27.9–33.3) | 23.0 | (20.7–25.3) | 26.7 | (25.0–28.4) |
| ≤8 | 22.3 | (18.5–26.1) | 12.3 | (9.7–14.9) | 17.4 | (15.1–19.7) |
| 9–11 | 40.1 | (35.7–44.5) | 31.4 | (27.7–35.1) | 35.4 | (32.5–38.3) |
| 12 | 27.9 | (21.5–34.3) | 23.3 | (17.5–29.1) | 25.6 | (21.2–30.0) |
| GED ^{§§} diploma | 51.3 | (43.4–59.2) | 40.2 | (33.2–47.2) | 46.0 | (40.5–51.5) |
| High school diploma | 27.6 | (25.3–29.9) | 20.4 | (18.7–22.1) | 23.8 | (22.3–25.3) |
| Associate degree | 25.4 | (22.1–28.7) | 17.8 | (15.2–20.4) | 21.2 | (19.1–23.3) |
| Some college | 26.1 | (24.2–28.0) | 20.0 | (18.3–21.7) | 22.7 | (21.4–24.0) |
| Undergraduate degree | 10.8 | (9.0–12.6) | 8.4 | (7.0–9.8) | 9.6 | (8.5–10.7) |
| Graduate degree | 7.3 | (5.4–9.2) | 5.8 | (4.1–7.5) | 6.6 | (5.3–7.9) |
| Age group (yrs) | | | | | | |
| 18–24 | 28.5 | (24.7–32.3) | 19.3 | (16.7–21.9) | 23.9 | (21.7–26.1) |
| 25–44 | 26.0 | (24.3–27.7) | 21.0 | (19.7–22.3) | 23.5 | (22.4–24.6) |
| 45–64 | 24.5 | (22.7–26.3) | 19.3 | (17.9–20.7) | 21.8 | (20.6–23.0) |
| ≥65 | 12.6 | (10.6–14.6) | 8.3 | (7.0–9.6) | 10.2 | (9.2–11.2) |
| Poverty status^{¶¶} | | | | | | |
| At or above federal poverty level | 22.9 | (21.6–24.2) | 17.8 | (16.8–18.8) | 20.4 | (19.6–21.2) |
| Below federal poverty level | 34.0 | (30.0–38.0) | 28.0 | (25.2–30.8) | 30.6 | (28.0–33.2) |
| Unknown | 23.3 | (21.0–25.6) | 14.2 | (12.6–15.8) | 18.3 | (16.9–19.7) |
| Total | 23.9 | (22.8–25.0) | 18.0 | (17.2–18.8) | 20.8 | (20.1–21.5) |

* Persons who reported smoking at least 100 cigarettes during their lifetimes and who, at the time of interview, reported smoking every day or some days. Excludes 315 respondents whose smoking status was unknown.

† Confidence interval.

§ Excludes 266 respondents of unknown race or multiple races.

¶ Wide variances in estimates reflect small sample sizes.

** Does not include Native Hawaiians or Other Pacific Islanders.

†† Among persons aged ≥25 years. Excludes 305 persons whose educational level was unknown.

§§ General Educational Development.

¶¶ Based on family income reported by respondents and 2005 poverty thresholds published by the U.S. Census Bureau.

lowest prevalence (10.4%). Hispanics had a significantly lower prevalence of smoking (15.2%) than American Indians/Alaska Natives (32.4%), non-Hispanic blacks (23.0%), and non-Hispanic whites (21.9%).

Prevalence also varied by level of education. Smoking prevalence was highest among adults who had earned a General Educational Development (GED) diploma (46.0%) and those with 9–11 years of education (35.4%); overall, smoking prevalence decreased as education level increased. By age group, adults aged 18–24 years and 25–44 years had the highest prevalence of smoking (23.9% and 23.5%, respectively). The prevalence of current smoking was higher among adults living below the federal poverty level (30.6%) than among those at or above this level (20.4%).

Before 2006, certain population subgroups already had achieved smoking prevalences that were lower than the

national health objective of 12%, and the prevalences remained low in 2006. These included Hispanic (10.1%) and Asian (4.6%) women, women with undergraduate (8.4%) or graduate (5.8%) degrees, men with undergraduate (10.8%) or graduate (7.3%) degrees, and women aged ≥65 years (8.3%).

In 2006, the age-adjusted prevalence of current smoking was 36.9% among persons with a smoking-related chronic disease and 19.3% among those without a chronic disease (Table 2). Current smoking prevalence was higher among persons with smoking-related cancers (other than lung cancer) (38.8%), coronary heart disease (CHD) (29.3%), and stroke (30.1%) than among persons without chronic diseases, and nearly half (49.1%) of U.S. adults with emphysema and 41.1% of those with chronic bronchitis were current smokers. With the exception of persons who had a stroke, persons with any smoking-related chronic disease

TABLE 2. Estimated age-adjusted prevalence of current smokers,* former smokers,† and never smokers‡ among U.S. adults aged ≥18 years, by chronic disease status — National Health Interview Survey, United States, 2006

| Disease | Current smokers | | Former smokers | | Never smokers | |
|--|-----------------|------------------------|----------------|--------------------|---------------|--------------------|
| | % | (95% CI [¶]) | % | (95% CI) | % | (95% CI) |
| Any smoking-related chronic disease** | 36.9 | (34.2–40.0) | 26.0 | (23.6–28.5) | 37.1 | (34.3–40.0) |
| Malignant neoplasms | | | | | | |
| Lung | 20.9 | (9.5–39.8) | 61.2 | (41.5–77.9) | 17.9 | (8.0–35.6) |
| Other cancers ^{††} | 38.8 | (32.0–46.1) | 33.2 | (26.3–40.9) | 28.0 | (22.2–34.7) |
| Cardiovascular disease | | | | | | |
| Coronary heart disease ^{§§} | 29.3 | (23.2–36.2) | 31.8 | (25.7–38.6) | 38.9 | (33.7–44.4) |
| Stroke | 30.1 | (22.6–38.8) | 23.0 | (17.8–29.1) | 47.0 | (38.4–55.8) |
| Respiratory disease | | | | | | |
| Emphysema | 49.1 | (40.1–58.2) | 28.6 | (21.8–36.5) | 22.3 | (13.6–34.3) |
| Chronic bronchitis | 41.1 | (37.4–45.0) | 20.0 | (17.4–23.0) | 38.9 | (34.9–43.0) |
| Other chronic disease^{¶¶} | 23.0 | (21.9–24.1) | 23.5 | (22.5–24.5) | 53.5 | (52.2–54.9) |
| No chronic disease | 19.3 | (18.4–20.2) | 16.4 | (15.4–17.4) | 64.3 | (63.1–65.6) |

* Persons who reported smoking at least 100 cigarettes during their lifetimes and who, at the time of interview, reported smoking every day or some days.

† Persons who reported smoking at least 100 cigarettes during their lifetimes but who currently did not smoke.

‡ Persons who reported never smoking 100 cigarettes during their lifetimes.

¶ Confidence interval.

** Includes smoking-related malignant neoplasms, cardiovascular diseases, and respiratory diseases. Cigarette smoking has been identified by the Surgeon General as a cause of these diseases (US Department of Health and Human Services. The health consequences of smoking: a report of the Surgeon General. Atlanta, GA: US Department of Health and Human Services, CDC; 2004).

†† Includes cancers of the bladder; cervix; esophagus; kidney; larynx-windpipe; mouth, tongue, or lip; pancreas; stomach; and throat-pharynx.

§§ Includes coronary heart disease, angina pectoris, and myocardial infarction.

¶¶ Includes chronic diseases that were not smoking related.

were significantly less likely to have never smoked than those with other chronic diseases (53.5%) or no chronic disease (64.3%). Persons with lung cancer (17.9%) and emphysema (22.3%) were least likely to be never smokers.

Reported by: VJ Rock, MPH, A Malarcher, PhD, JW Kahende, PhD, K Asman, MSPH, C Husten, MD, R Caraballo, PhD, Office on Smoking and Health, National Center for Chronic Disease Prevention and Health Promotion, CDC.

Editorial Note: Cigarette smoking remains the leading preventable cause of disease and death in the United States, resulting in approximately 438,000 deaths annually (5). The prevalence of cigarette smoking remained relatively unchanged during the early 1990s but gradually decreased from 1997 (24.7%) to 2004 (20.9%) (Figure). This report indicates that the prevalence of current smoking among U.S. adults in 2006 (20.8%) was not significantly different from the prevalence in 2004 (20.9%), suggesting a stall in previous declines. This lack of a decrease in cigarette use during 2 years might be a result of several factors. Most notably, funding for comprehensive state programs for tobacco control and prevention decreased by 20.3% from 2002 to 2006 (6), and tobacco-industry marketing expenditures nearly doubled from 1998 (\$6.7 billion) to

2005 (\$13.1 billion) (7). In 2005, approximately 81% (\$10.6 billion) of tobacco-industry marketing expenditures were related to discounting strategies (e.g., coupons, two-for-one offers, or promotional discounts for retailers or wholesalers) (7) that reduce the impact of increases in the unit price of tobacco, which are effective in preventing initiation of smoking and increasing cessation.†

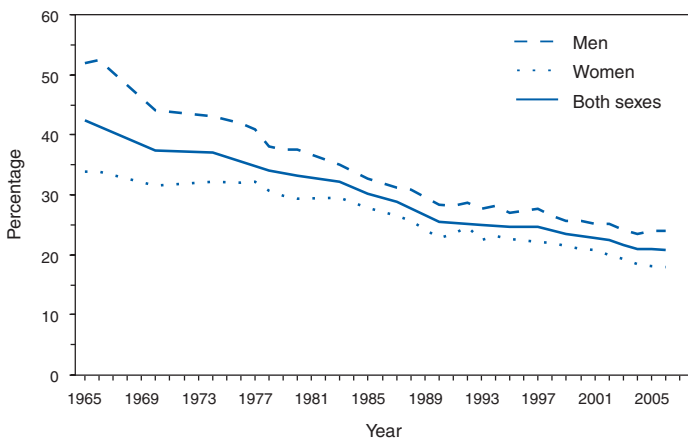
Among smokers who already have a smoking-related chronic disease, those who quit have a lower risk for death from the disease than those who continue smoking (8). Smokers who quit have a slower rate of decline in lung function and a lower incidence of bronchitis, emphysema, and other respiratory conditions than persons who continue to smoke (8). Among smokers with CHD, those who quit have a lower risk for further CHD-related morbidity and mortality than those who continue to smoke (8). In addition, smokers who have cancer and who continue smoking during

treatment decrease treatment effectiveness, overall survival prognosis, and quality of life and increase the risk for having another malignancy or comorbid condition (9). The continuation of smoking among those who have smoking-related chronic diseases described in this report highlights the need for health-care providers to emphasize the importance of quitting. Health-care providers should repeatedly offer intensive smoking-cessation interventions to all of their patients, especially those with smoking-related chronic diseases who continue to smoke.

The findings in this report are subject to at least three limitations. First, estimates of cigarette smoking are based on self-report and are not validated by biochemical tests. However, self-reported population-based data on current smoking status have high validity when compared with measured serum cotinine levels (10). Second, the NHIS questionnaire is administered in English and Spanish only, which might have resulted in imprecise estimates for certain racial/ethnic subgroups because of language barriers. Third, the small NHIS samples for certain population groups (e.g.,

† CDC. The guide to community preventive services: tobacco. Available at <http://www.thecommunityguide.org/tobacco>.

FIGURE. Estimated percentage of persons aged ≥ 18 years who were current smokers,* by sex — National Health Interview Survey, United States, 1965–2006



*During 1965–1991, current smokers were defined as persons who reported smoking at least 100 cigarettes during their lifetimes and who, at the time of interview, reported smoking (“Have you smoked at least 100 cigarettes in your entire life?” and “Do you smoke cigarettes now?”). In 1992, the definition changed to more accurately assess intermittent smoking (i.e., smoking on some days) and included persons who reported they smoked either every day or some days (“Do you now smoke cigarettes every day, some days, or not at all?”)

American Indians/Alaska Natives) resulted in unstable single-year estimates with large confidence intervals.

Since the 1960s, smoking prevalence in the United States has decreased substantially (Figure); however, recent data suggest that declines in both adolescent and adult smoking prevalence might be stalling. Cigarette smoking continues to result in substantial costs. The economic costs of smoking in the United States are estimated at \$167 billion annually (\$92 billion in productivity losses from premature death and \$75.5 billion in health-care expenditures) (5). In 2007, the Institute of Medicine concluded that funding comprehensive tobacco-control programs at levels recommended by CDC and regulations designed to foster policy innovations are essential strategies that should be implemented to reduce tobacco use (3).

References

1. US Department of Health and Human Services. Healthy people 2010 (conference ed, in 2 vols). Washington, DC: US Department of Health and Human Services; 2000. Available at <http://www.health.gov/healthypeople>.
2. CDC. Cigarette smoking among adults—United States, 2004. *MMWR* 2005;54:1121–4.
3. Institute of Medicine. Ending the tobacco problem: a blueprint for the nation. Washington, DC: The National Academies Press; 2007.
4. US Department of Health and Human Services. The health consequences of smoking: a report of the Surgeon General. Atlanta, GA: US Department of Health and Human Services, CDC; 2004.
5. CDC. Annual smoking-attributable mortality, years of potential life lost, and economic costs—United States, 1997–2001. *MMWR* 2005;54:625–8.

6. Campaign for Tobacco-Free Kids, American Lung Association, American Cancer Society, American Heart Association. A broken promise to our children: the 1998 state tobacco settlement eight years later. Washington, DC: Campaign for Tobacco-Free Kids; 2006. Available at <http://www.tobaccofreekids.org/reports/settlements/2007/fullreport.pdf>.
7. Federal Trade Commission. Cigarette report for 2004 and 2005. Washington, DC: Federal Trade Commission; 2007. Available at <http://www.ftc.gov/reports/tobacco/2007cigarette2004-2005.pdf>.
8. US Department of Health and Human Services. The health benefits of smoking cessation: a report of the Surgeon General. Rockville, MD: US Department of Health and Human Services, CDC; 1990.
9. Gritz ER, Fingeret MC, Vidrine DJ, Lazev AB, Mehta NV, Reece GP. Successes and failures of the teachable moment: smoking cessation in cancer patients. *Cancer* 2006;106:17–27.
10. Caraballo RS, Giovino GA, Pechacek TF, Mowery PD. Factors associated with discrepancies between self-reports on cigarette smoking and measured serum cotinine levels among persons aged 17 years or older: third National Health and Nutrition Examination Survey, 1988–1994. *Am J Epidemiol* 2001;153:807–14.

Salmonella Typhimurium Infection Associated with Raw Milk and Cheese Consumption — Pennsylvania, 2007

In February 2007, the Pennsylvania Department of Health received reports, through routine electronic laboratory disease reporting, of two persons with recent laboratory-confirmed infections with *Salmonella enterica* serotype Typhimurium. Both persons had reported drinking raw (unpasteurized) milk from the same York County, Pennsylvania, dairy (dairy A). *S. Typhimurium* isolates from these persons had pulsed-field gel electrophoresis (PFGE) patterns that were indistinguishable by use of the *Xba*I restriction enzyme. The same month, the Pennsylvania Department of Agriculture (PDA) received reports of illness from raw-milk customers of dairy A. PDA obtained milk samples from the raw-milk bulk tank at dairy A, which yielded *S. Typhimurium* with a PFGE pattern that was identical to the pattern from patient isolates. On February 26, the Pennsylvania Department of Health and PDA launched an investigation to determine the source and scope of the outbreak. This report summarizes the findings of that investigation, which determined that 29 cases of diarrheal illness caused by *S. Typhimurium* were associated with consumption of raw milk or raw-milk products from dairy A. The findings underscore the need to inform policymakers and the public of the potential health risks associated with raw-milk consumption.

Epidemiologic and Laboratory Investigation

In Pennsylvania, raw-milk sales are legal at farms that hold a PDA permit, and vendors must display public notices regarding the potential hazards of consuming raw milk (1). Dairy A owned 120 cows and sold raw milk for pasteurization and by PDA permit directly to consumers. In February 2007, PDA estimated that dairy A was selling 200–300 gallons of raw milk weekly to 275 regular customers.

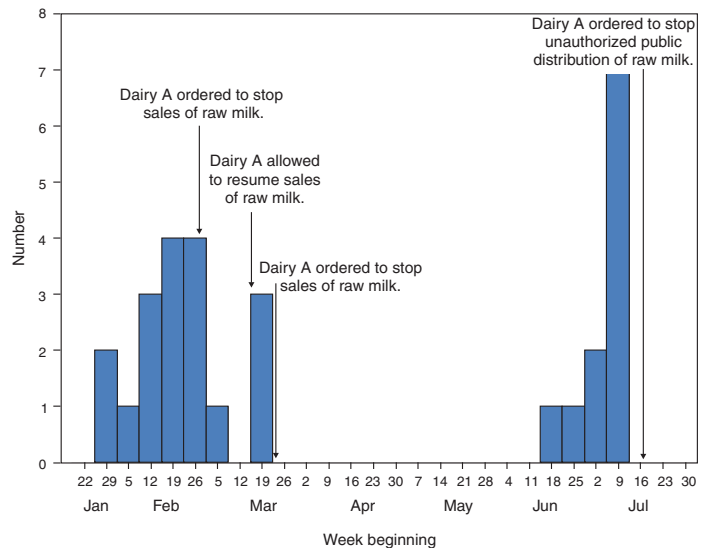
A case of salmonellosis was defined as a diarrheal illness with onset since February 1, 2007, in a Pennsylvania resident who provided a stool specimen that tested positive for *S. Typhimurium* with a PFGE pattern that matched the outbreak pattern by use of the *Xba*I restriction enzyme. Nationally notifiable disease reports from Pennsylvania since January 2005 were reviewed for PFGE-matched *S. Typhimurium* isolates to identify cases and risk factors. To locate additional cases, ill household contacts of persons with confirmed cases were asked to provide food histories and submit stool specimens for testing. Raw milk for testing was obtained from dairy A milk tanks on five dates (February 20, February 28, March 27, May 14, and July 19) and from households of two ill persons on two dates (February 28 and July 20). In addition, PDA conducted multiple dairy A inspections during February–July 2007.

Investigative Findings

A total of 29 cases were identified, with illness onset occurring in three temporal clusters during February 3–July 14, 2007 (Figure). The first cluster consisted of 15 cases with onsets of illness from February 3 to March 5. Raw-milk samples were collected February 20 from a dairy A bulk milk tank and February 28 from the home of an ill person. Both sets of samples yielded the outbreak strain of *S. Typhimurium*. On March 2, PDA ordered dairy A to stop raw-milk sales and advised the public not to consume raw-milk products from dairy A.

On March 19, PDA allowed dairy A to resume sales of raw milk after PDA conducted inspections and recorded two consecutive negative cultures from milk-tank samples. However, a second cluster of three cases was detected when the outbreak strain of *S. Typhimurium* was identified in another patient, whose diarrheal illness began on March 21 and who had consumed raw milk from dairy A after sales resumed. The two additional cases were identified in persons with onsets of illness on March 19 and March 22. The first of these occurred in one of six ill persons who primarily spoke Spanish and who told investigators they

FIGURE. Number of cases* of diarrheal illness caused by infection with *Salmonella* Typhimurium, indistinguishable by pulsed-field gel electrophoresis, by week of illness onset — Pennsylvania, 2007



* N = 29.

had not consumed raw milk. However, when reinterviewed in early April, three of these six persons reported consuming queso fresco (a type of soft cheese) they bought at a grocery store serving the local Hispanic community. PDA learned that the queso fresco had been made by an unlicensed producer who purchased approximately 20 gallons of raw milk weekly from dairy A. Sale of raw-milk cheeses aged <60 days is illegal in Pennsylvania. Subsequently, in April, PDA inspectors seized 18 unlabeled retail containers of queso fresco from the grocery store. The cheese tested positive for alkaline phosphatase, indicating the cheese was produced from unpasteurized milk (2). Bacterial cultures were negative for pathogens.

On March 27, PDA again ordered dairy A to halt raw-milk sales and suspended its raw-milk permit. No additional cases were noted until June–July 2007, when a third cluster of 11 PFGE-matched *S. Typhimurium* cases was detected through routine electronic laboratory reporting. Of these, 10 occurred among residents of three counties near dairy A. On July 19, PDA confirmed that dairy A had been distributing raw milk to the public despite its suspended permit; the date when illegal milk distribution began could not be determined. The outbreak strain of *S. Typhimurium* was isolated from dairy A raw milk collected from a bulk milk tank on July 19 and from the home of an ill person on July 20. PDA ordered dairy A to halt distribution of raw milk on July 20 and subsequently revoked the raw-milk permit for this dairy.

Among the 29 persons identified with diarrheal illness and PFGE-matched *S. Typhimurim*, 17 (59%) were male, and the median age was 6 years (range: 5 months–76 years). Fourteen (48%) patients reported drinking raw milk from dairy A, four (14%) consumed unregulated queso fresco (three linked to dairy A raw milk and one from an unknown source), and two (7%) consumed raw milk but did not identify the source. Two (7%) other patients were unrelated infants aged 5 months and 7 months. The parents of these infants acknowledged that raw milk from dairy A was present in their households but told investigators the milk was not consumed by the infants. For seven (24%) patients who did not reside with any of the other patients, no source of exposure to *S. Typhimurium* could be determined. Two of the 29 patients were hospitalized; no deaths were reported.

Environmental Inspections

Eight PDA inspections of dairy A conducted during January–April 2007 revealed improper cleaning of milking equipment, insufficient supervision of workers, unspecified illness among lactating cows, and bird and rodent infestation. On at least two inspections, the required public notice regarding the potential hazards of drinking raw milk was not visible at the dairy A retail store.

S. Typhimurium matched by PFGE to the outbreak pattern was isolated from dairy A raw-milk tank samples collected on three different dates (February 20, May 14, and July 19); an *S. Typhimurium* isolate collected from a milk tank February 28 was unavailable for PFGE typing. In addition to *Salmonella*, dairy A raw-milk tank samples also yielded *Listeria monocytogenes* (February 28, May 14, and July 19) and *Campylobacter jejuni* (February 28 and May 14). Although a stool specimen from one patient with February 28 illness onset yielded both *S. Typhimurium* and *C. jejuni*, the *Campylobacter* isolate was unavailable for subtyping. No *Listeria* infections were associated with dairy A.

Reported by: L Lind, MPH, J Reeser, K Stayman, M Deasy, M Moll, MD, A Weltman, MD, V Urdaneta, MD, S Ostroff, MD, Pennsylvania Dept of Health; W Chirdon, Pennsylvania Dept of Agriculture. E Campagnolo, DVM, Div of State and Local Readiness, Coordinating Office for Terrorism Preparedness and Emergency Response; T Chen, MD, EIS Officer, CDC.

Editorial Note: Raw milk is a well-documented source of infections from *Salmonella*, *Escherichia coli* O157:H7, *Campylobacter*, *Listeria*, *Mycobacterium bovis*, and other pathogens (2–6). In 1938, before widespread adoption of milk pasteurization in the United States, an estimated 25% of all foodborne and waterborne outbreaks of disease were associated with milk (7). By 2001, the percentage of such outbreaks associated with milk was estimated at <1% (7).

During 1998–2005, a total of 45 outbreaks of foodborne illness were reported to CDC in which unpasteurized milk (or cheese suspected to have been made from unpasteurized milk) was implicated. These outbreaks accounted for 1,007 illnesses, 104 hospitalizations, and two deaths (CDC, unpublished data, 2007). Because not all cases of foodborne illness are recognized and reported, the actual number of illnesses associated with unpasteurized milk likely is greater.

In the investigations described in this report, the evidence indicating raw milk from dairy A as the source of this outbreak included the 1) high percentage of ill persons who reported consuming either raw milk (48%) or queso fresco traced to raw milk (10%) from dairy A, 2) temporal associations between clusters of illnesses and starts and stops of distribution of raw milk by dairy A, and 3) repeated isolation of the outbreak strain of *S. Typhimurium* from dairy A raw-milk tanks. The PFGE pattern of the outbreak strain (*Xba*I JPXX01.0022) is rare, previously identified only 24 times in isolates from 11 states in 3 years, in a national PulseNet database of approximately 43,000 *S. Typhimurium* isolates.

Consumers have reported consuming raw milk for convenience, taste preference, or perceived health benefits. Although some advocates claim health benefits from raw milk compared with pasteurized milk, including decreased risks for atherosclerosis, arthritis, and lactose intolerance, such claims are not supported by scientific evidence (8). Unsubstantiated claims of health benefits of raw milk for infants and children are particularly concerning for caregivers because infants and children are dependent on their caregivers to make safe dietary decisions for them. Sixteen of the 29 ill persons in this outbreak were aged <7 years.

Pathogens that infect humans are shed in the feces of cows, can be present in or on the udders of cows, and can contaminate their milk. Standard hygiene practices during milking can reduce but not eliminate the risk for milk contamination. In a 2001–2002 survey of Pennsylvania dairy farms, pathogenic bacteria, including *Salmonella*, were isolated from 13% of samples from raw-milk bulk tanks (9). Pasteurization decreases the number of pathogenic organisms, prevents transmission of pathogens, and has been determined to improve the safety of milk more than other measures, including certification of raw milk (4,5).

Farms in Pennsylvania that hold PDA raw-milk permits undergo twice-monthly milk testing for coliforms and standard plate counts and monthly testing for growth inhibitors and somatic cell counts; annual PDA inspection and culture of raw milk for *Salmonella*, *Campylobacter*, *E. coli* O157, and *L. monocytogenes*; and annual herd skin testing

for *Mycobacterium bovis* and *Brucella* (1). Despite these measures, consumers cannot be assured that certified raw milk is free of pathogens.

As of 2004, at least 27 states permitted some form of raw-milk sales to the public, including sales at dairies, farmers' markets, or through purchase of "cow shares." Certain states also allow public sales of raw milk but for pet food only (10). In Pennsylvania, the number of dairies with raw-milk permits increased from 42 in 2005 to 75 in 2007. During 2006–2007, three clusters of illness from *Campylobacter* were associated with consumption of raw milk from three different Pennsylvania dairies (Pennsylvania Department of Health, unpublished data, 2007). During the same period, PDA announced raw-milk recalls from three other dairies after finding *L. monocytogenes* in milk samples; no human illness was associated with these findings.

Given the continued interest in raw-milk production, policymakers, parents, and the public need to be informed regarding the potential health risks posed by raw-milk consumption. The only sure way for consumers to prevent raw-milk-associated infection from *Salmonella* or other pathogens is to refrain from consuming raw milk.

Acknowledgments

This report is based, in part, on data contributed by C Sandt, B Perry, Bur of Laboratories, P Feliciano, Pennsylvania Dept of Health; M Hydock, R Malik, L Sulpizio, Pennsylvania Dept of Agriculture; T Nguyen, T Ayers, G Ewald, M Lynch, Div of Foodborne, Bacterial, and Mycotic Diseases, National Center for Zoonotic, Vector-Borne, and Enteric Diseases; A Patel, A Sheth, EIS officers, CDC.

References

1. Commonwealth of Pennsylvania. Chapter 59: Milk sanitation. Available at http://www.agriculture.state.pa.us/agriculture/lib/agriculture/legalreference/007_0059.pdf.
2. Gillespie IA, Adak GK, O'Brien SJ, Bolton FJ. Milkborne general outbreaks of infectious intestinal disease, England and Wales, 1992–2000. *Epidemiol Infect* 2003;103:461–8.
3. Leedom JM. Milk of nonhuman origin and infectious disease in humans. *Clin Infect Dis* 2006;43:610–5.
4. Currier RW. Raw milk and human gastrointestinal disease: problems resulting from legalized sale of "certified raw milk." *J Public Health Policy* 1981;2:226–34.
5. Potter ME, Blaser MJ, Sikes RK, Kaufmann AF, Wells JG. Human *Campylobacter* infection associated with certified raw milk. *Am J Epidemiol* 1983;117:475–83.
6. CDC. Human tuberculosis caused by *Mycobacterium bovis*—New York City, 2001–2004. *MMWR* 2005;54:605–8.
7. Center for Food Safety and Applied Nutrition. Grade "A" pasteurized milk ordinance: 2001 revision. US Department of Health and Human Services, Food and Drug Administration, Center for Food Safety and Applied Nutrition; 2002. Available at <http://www.cfsan.fda.gov/~ear/pmo01.html>.
8. Leonard C. On the safety of raw milk (with a word about pasteurization). Presented at the National Conference on Interstate Milk Shipments, Columbus, Ohio, May 12–17, 2005. Available at <http://www.cfsan.fda.gov/~ear/milksafe/milksa1.htm>.
9. Jayarao BM, Donaldson SC, Straley BA, Sawant AA, Hegde NV, Brown JL. A survey of foodborne pathogens in bulk tank milk and raw milk consumption among farm families in Pennsylvania. *J Dairy Sci* 2006;89:2451–8.
10. Dairy Division of National Association of State Departments of Agriculture. Raw milk survey: November 2004. Available at <http://www.nasda.org/file.aspx?id=11160>.

Syringe Exchange Programs — United States, 2005

Syringe exchange programs (SEPs) provide free sterile syringes* in exchange for used syringes to reduce transmission of bloodborne pathogens among injection-drug users (IDUs) (1). SEPs in the United States began as a way to prevent the spread of human immunodeficiency virus (HIV) and other bloodborne infections such as hepatitis B and hepatitis C. The National Institute on Drug Abuse recommends that persons who continue to inject drugs use a new, sterile syringe for each injection (2). Monitoring syringe exchange activity is an important part of assessing HIV prevention measures in the United States. As of November 2007, a total of 185 SEPs were operating in 36 states, the District of Columbia (DC), and Puerto Rico (North American Syringe Exchange Network [NASEN], unpublished data, 2007). This report summarizes a survey of SEP activities in the United States during 2005 and compares the findings with previous SEP surveys (3–7; Beth Israel Medical Center [BIMC], unpublished data, 2000 and 2004). The findings indicated an increase in overall funding for SEPs, including an increase in public funding, and a stabilization in both the number of SEPs operating and the number of syringes exchanged since 2004. This report also documents an expansion of services offered by SEPs, a trend that resulted from an increase in state and local funding. These expanded services are helping protect IDUs and their communities from the spread of bloodborne pathogens and are providing access to health services for a population at high risk. Monitoring of syringe exchange activity should continue.

In March 2006, staff members from BIMC and NASEN mailed surveys to directors of all 166 SEPs registered with NASEN at that time (compared with 68 known SEPs for the 1994–1995 survey, 101 for 1996, 113 for 1997, 131 for 1998, 154 for 2000, 148 for 2002, and 174 for 2004) (3–7; BIMC, unpublished data, 2000 and 2004). Registration with NASEN provides important benefits to SEPs and does not involve any cost; thus, nearly all SEPs in the

*For this report, the term "syringes" refers to both syringes and needles.

United States are likely to be registered. The surveys included questions regarding the number of syringes exchanged, the types of services provided, and budgets and funding during 2005. Data for 2005 were collected during March–August 2006. Telephone interviews were conducted to clarify responses received on surveys. The methods were similar to those used in previous SEP surveys, except for an Internet-based option that was used in the 2002 survey only.

Of the 166 SEPs contacted, 118 (71%) completed the survey. These 118 SEPs reported operating in 91 cities[†] in 28 states/territories[§] and in DC. A total of 79 (67%) SEPs were operating in six states: 22 in California, 17 in New Mexico, 15 in Washington, 10 in Wisconsin, nine in New York, and six in Connecticut.

SEP size was determined by the number of syringes exchanged during 2005 (Table 1); 117 SEPs reported exchanging a total of 22,472,168 syringes (one SEP did not track the number of syringes exchanged in 2005). The 12 largest programs exchanged 11,863,932 (53% of all the syringes exchanged).[¶]

In addition to exchanging syringes, SEPs provided various supplies, services, and referrals in 2005 (Table 2). Nearly all SEPs provided alcohol pads (117 [99%]), male condoms (115 [97%]), and referrals to substance-abuse treatment (102 [86%]). Certain medical services also were offered by SEPs, including counseling and testing for HIV (96 [81%]) and hepatitis C (66 [56%]). Vaccinations for hepatitis B were provided by 46 (39%) SEPs, and hepatitis A

TABLE 1. Number of syringes exchanged by syringe exchange programs (SEPs), by program size — United States, 2005

| SEP size | No. of syringes exchanged per SEP | No. of SEPs | Total no. of syringes exchanged | % of total syringes exchanged |
|--------------|-----------------------------------|-------------|---------------------------------|-------------------------------|
| Small | <10,000 | 24 | 89,626 | 0.4 |
| Medium | 10,000–55,000 | 33 | 810,953 | 3.6 |
| Large | 55,001–499,999 | 48 | 9,707,657 | 43.0 |
| Very large | ≥500,000 | 12 | 11,863,932 | 53.0 |
| Total | | 117* | 22,472,168 | 100.0 |

* One of the 118 programs responding to the survey did not track the number of syringes exchanged in 2005.

TABLE 2. Number and percentage of syringe exchange programs (SEPs),* by selected supplies and services provided — United States, 2005

| Supplies and services | No. | (%) |
|--|-----|------|
| Prevention supplies | | |
| Male condoms | 115 | (97) |
| Female condoms | 98 | (83) |
| Alcohol pads | 117 | (99) |
| Bleach | 82 | (69) |
| On-site medical screenings and services | | |
| HIV counseling and testing | 96 | (81) |
| Hepatitis C counseling and testing | 66 | (56) |
| Hepatitis B counseling and testing | 44 | (37) |
| Hepatitis A counseling and testing | 28 | (24) |
| Hepatitis B vaccination | 46 | (39) |
| Hepatitis A vaccination | 43 | (37) |
| Sexually transmitted disease (STD) screening | 57 | (49) |
| Tuberculosis screening | 33 | (28) |
| On-site medical care | 34 | (29) |
| Referrals | | |
| Substance-abuse treatment | 102 | (86) |
| Education | | |
| HIV/AIDS prevention | 116 | (98) |
| Hepatitis A, B, and C prevention | 114 | (97) |
| Safer injection practice | 113 | (96) |
| Vein care | 110 | (93) |
| STD prevention | 110 | (93) |
| Abscess prevention | 107 | (91) |
| Male condom use | 112 | (95) |
| Female condom use | 97 | (82) |

* N = 118.

vaccinations were provided by 43 (37%). Thirty-four (29%) SEPs offered other on-site medical care.

In 2005, many SEPs operated multiple sites, including fixed sites and mobile van routes. The total number of hours that clients were served by SEPs was summed for all sites operated by each program. This total number of hours per program ranged from 1 to 168 hours per week (mean: 26 hours per week; median: 20 hours per week). Delivery of syringes and other risk-reduction supplies to residences or meeting spots was reported by 56 (47%) SEPs. A total of 110 (93%) SEPs allowed persons to exchange syringes on behalf of other persons (i.e., secondary exchange).

[†] Cities with more than one SEP: Eureka, Los Angeles, Oakland, and San Francisco, California; Detroit, Michigan; Minneapolis, Minnesota; Albuquerque and Farmington, New Mexico; New York, New York; Burlington, Vermont; Bremerton, Seattle, and Tacoma, Washington; and Madison and Milwaukee, Wisconsin.

[§] States/territories with SEPs: California (22); New Mexico (17); Washington (15); Wisconsin (10); New York (nine); Connecticut (six); Illinois (four); Massachusetts, Michigan, Minnesota, Oregon, and Vermont (three each); Louisiana, Maine, and Texas (two each); and Alaska, Colorado, Georgia, Hawaii, Indiana, Kansas, Missouri, New Jersey, North Carolina, Oklahoma, Pennsylvania, Puerto Rico, and Utah (one each). In addition, DC has one SEP.

[¶] States with SEPs that exchanged ≥500,000 syringes in 2005: California (four SEPs); Washington (three); Illinois, New Mexico, Oregon, Pennsylvania, and Wisconsin (one each). The largest-volume SEPs were San Francisco AIDS Foundation HIV Prevention Project (2.3 million syringes exchanged per year); Chicago Recovery Alliance, Chicago, Illinois (2.3 million); Street Outreach Services, Seattle, Washington (1.0 million); HIV Education and Prevention Project of Alameda, Oakland, California (0.9 million); Public Health – Seattle & King County Needle Exchange, Seattle, Washington (0.9 million); Point Defiance AIDS Project, Tacoma, Washington (0.8 million); San Diego Clean Needle Exchange Program, San Diego, California (0.8 million); SANA Needle Exchange Program/HIV Alliance, Eugene, Oregon (0.6 million); Prevention Point Pittsburgh, Pittsburgh, Pennsylvania (0.6 million); Lifepoint, Milwaukee, Wisconsin (0.5 million); Homeless Healthcare, Los Angeles, California (0.5 million); and Project De Sida, Albuquerque, New Mexico (0.5 million).

A total of 114 SEPs reported budget information for 2005; four SEPs lacked budget information for this period. The reported budgets for these 114 SEPs totaled \$15.2 million (Table 3). Some SEPs received funding from a common source, and allocating funds from the common source to individual programs was not always possible. For the 97 SEPs for which individual budget information could be generated, the 2005 budgets ranged from \$648 to \$1,516,375. The mean SEP budget increased from \$131,301 in 2004 to \$133,450 in 2005. In 2005, a total of 30 (31%) SEPs operated with a budget of <\$25,000, 29 (30%) with \$25,000–\$100,000, and 38 (39%) with >\$100,000. SEPs reported multiple sources of financial support in 2005, including individuals, foundations, and state and local governments. In 2005, a total of 72 (61%) of the 118 SEPs that responded to the survey received public funding totaling nearly \$11.3 million from city, county, and state governments,** accounting for approximately 74% of total funding. The total amount of public funding increased by nearly \$2 million in 2005, and the mean public funding budgets increased by nearly \$10,000 (\$145,633 in 2004 versus \$157,273 in 2005). Federal law prohibits the use of federal funds to support SEPs.

From the period 1994–1995, when the first national survey of SEPs was conducted, to 2002, the number of SEPs and the number of syringes exchanged by these programs increased consistently. However, in 2005, a reduction was observed in the number of SEPs and syringes

exchanged. In 2005, eight fewer SEPs were operating than previously indicated by results from the 2004 survey (BIMC, unpublished data, 2004), and two fewer states had SEPs operating. However, four additional cities had SEPs operating in 2005, compared with 2004. The number of syringes exchanged decreased from approximately 24.0 million in 2004 to 22.5 million in 2005.

Reported by: *CA McKnight, MPH, DC Des Jarlais, PhD, T Perlis, PhD, K Eigo, Baron Edmond de Rothschild Chemical Dependency Institute, Beth Israel Medical Center; M Krim, PhD, M Ruiz, PhD, American Foundation for AIDS Research, New York, New York. D Purchase, A Solberg, North American Syringe Exchange Network, Tacoma, Washington. TD Mastro, Div of HIV/AIDS Prevention, National Center for HIV/AIDS, Viral Hepatitis, STD, and TB Prevention, CDC.*

Editorial Note: Compared with data from previous national SEP surveys, the findings in this report indicate an overall stabilization in the number of SEPs operating in the United States. Total funding of SEPs increased in 2005 despite a reduction in the number of SEPs. Increases in funding, particularly public funding, provided opportunities for SEPs to expand the types of services they provide. As a result of these increases, many SEPs have evolved into larger, community-based organizations that provide numerous social and medical services to IDUs and their communities (e.g., testing for HIV and hepatitis A, hepatitis B, and hepatitis C; vaccinations for hepatitis A and hepatitis B; and general medical care). These more costly services have been added to many SEPs during the past several years, and continued increases in funding might make these services more available. By expanding such services, SEPs are becoming part of a comprehensive approach to the prevention of bloodborne infections among IDUs and their communities.

The findings in this report are subject to at least three limitations. First, the extent of SEP activity in the United States is likely underestimated because 48 (29%) of the SEPs known to NASEN did not complete the survey. Other

** State/territorial governments providing public funding: California, Connecticut, Georgia, Hawaii, Illinois, Massachusetts, New Mexico, New York, Oregon, Puerto Rico, Washington, and Wisconsin. County governments providing public funding: Clark, King, Pierce, and Skagit, Washington; Alameda, Humboldt, Los Angeles, and Santa Clara, California; Dane and Eau Claire, Wisconsin; Boulder, Colorado; Cook, Illinois; and Lane and Multnomah, Oregon. City governments providing public funding: Inglewood, Los Angeles, Reseda, and San Francisco, California; Seattle and Vancouver, Washington; Chicago, Illinois; Milwaukee and Madison, Wisconsin; New York, New York; and Bridgeport, Connecticut.

TABLE 3. Characteristics of syringe exchange programs (SEPs) — United States, 1994–1998, 2000, 2002, 2004, and 2005

| Characteristic | 1994–1995 | 1996 | 1997 | 1998 | 2000* | 2002 | 2004* | 2005 |
|--|-----------|---------|----------|----------|----------|----------|----------|----------|
| No. of SEPs known to NASEN† | 68 | 101 | 113 | 131 | 154 | 148 | 174 | 166 |
| No. of known SEPs participating in survey (%) | 60 (88) | 87 (86) | 100 (88) | 110 (84) | 127 (82) | 126 (85) | 109 (63) | 118 (71) |
| No. of cities with known SEPs participating in survey | 46 | 71 | 80 | 81 | 106 | 102 | 87 | 91 |
| No. of states§ (territories) with known SEPs participating in survey | 20 (1) | 28 (1) | 30 (2) | 31 (2) | 33 (2) | 31 (1) | 30 (1) | 28 (1) |
| No. of syringes exchanged (millions) | 8.0 | 13.9 | 17.5 | 19.4 | 22.6 | 24.9 | 24 | 22.5 |
| Total SEP budgets (in millions of dollars) | 6.2 | 6.5 | 8.4 | 8.6 | 12.1 | 13.0 | 13.5 | 15.2 |
| Total public funding budget (in millions of dollars) | 2.3 | 4.5 | 4.2 | 6.0 | 8.9 | 7.3 | 9.5 | 11.3 |

* Based on unpublished data from 2000 and 2004 surveys of SEP activities, Beth Israel Medical Center, New York, New York.

† North American Syringe Exchange Network.

§ Includes District of Columbia.

SEPs might exist but are not known to NASEN. Second, certain SEPs operating within larger organizations were not able to report exact budget information because of difficulties in allocating shared costs across administrative units. Finally, data collected were based on self-reports by program directors and were not verified independently.

Although the number of SEPs in the United States has stabilized, many SEPs are providing a wider range of services than initially offered. On-site medical services are being provided by an increasing number of SEPs. IDUs often encounter problems in accessing health care, and offering these services in SEP locations increases the likelihood that IDUs will receive these services.

References

1. Normand J, Vlahov D, Moses LE, eds. Preventing HIV transmission: the role of sterile needles and bleach. Washington, DC: National Academies Press; 1995. Available at <http://www.nap.edu/books/0309052963/html>.
2. National Institute on Drug Abuse. Principles of HIV prevention in drug-using populations. Available at http://www.nida.nih.gov/pohp/faq_1.html.
3. CDC. Syringe exchange programs—United States, 1994–1995. *MMWR* 1995;44:684–5, 691.
4. CDC. Update: syringe exchange programs—United States, 1996. *MMWR* 1997;46:565–8.
5. CDC. Update: syringe exchange programs—United States, 1997. *MMWR* 1998;47:652–5.
6. CDC. Update: syringe exchange programs—United States, 1998. *MMWR* 2001;50:384–7.
7. CDC. Update: syringe exchange programs—United States, 2002. *MMWR* 2005;54:673–6.

Notice to Readers

Satellite Broadcast and Webcast: Cutting-Edge Legal Preparedness for Chronic Disease Prevention

Public Health Grand Rounds, a project sponsored by CDC in collaboration with the University of North Carolina School of Public Health, will air a satellite broadcast and webcast, “Cutting-Edge Legal Preparedness for Chronic Disease Prevention,” on November 29, 2007, at 2:00 p.m. EST. CDC’s Public Health Law Program and National Center for Chronic Disease Prevention and Health Promotion will present the broadcast, which describes innovative use of public health laws in New York City, such as posting calorie information on restaurant menus, phasing out use of trans fats, requiring laboratory reporting of blood-glucose test results, and prohibiting smoking in nearly all workplaces.

Additional information and broadcast registration are available at <http://www.publichealthgrandrounds.unc.edu>. Continuing education credit will be offered to participants.

Notice to Readers

World COPD Day — November 14, 2007

Chronic obstructive pulmonary disease (COPD) describes a group of slowly progressive diseases (e.g., chronic bronchitis or emphysema) characterized by airflow obstruction that interferes with normal breathing (1). COPD is the fourth leading cause of death in the United States and a major cause of morbidity and disability, resulting in substantial costs to persons and society. Smoking is the most common cause of COPD, accounting for approximately 80% of COPD cases (2). Other causes include exposure to occupational hazards, air pollution, and secondhand smoke. To increase global awareness of COPD and the importance of early diagnosis, the Global Initiative for Chronic Obstructive Lung Disease (<http://www.goldcopd.com>) is sponsoring World COPD Day on November 14, 2007.

Early diagnosis of COPD is important for better outcomes. The National Heart, Lung, and Blood Institute (NHLBI) recommends that persons at risk for COPD who have cough, sputum production, or shortness of breath should be tested for the disease using spirometry, a simple breathing test for assessing lung function (3). Persons who smoke or those at risk for COPD should stop smoking and avoid areas with tobacco smoke. Resources to help smokers quit are available at <http://www.smokefree.gov>, at the National Cancer Institute website (<http://www.cancer.gov>), or by telephone (800-QUIT-NOW [800-784-8669]).

NHLBI and the COPD Foundation also have initiated the Learn More, Breathe Better Campaign to heighten awareness of COPD as a serious lung disease, increase the understanding that COPD is treatable, and encourage those at risk for COPD to talk with their physicians and get a breathing test. A tool kit has been developed to help partner organizations share campaign information with their communities (2).

References

1. Rennard SI. COPD: overview of definitions, epidemiology, and factors influencing its development. *Chest* 1998;113(Suppl 4):235S–41S.
2. US Department of Health and Human Services. The health consequences of smoking: chronic obstructive lung disease. Washington, DC: US Department of Health and Human Services; 1984. USDHHS publication no. 84-50205.
3. National Heart, Lung, and Blood Institute. COPD Learn More, Breathe Better Campaign. Bethesda, MD: US Department of Health and Human Services, National Heart, Lung, and Blood Institute. Available at <http://www.nhlbi.nih.gov/health/public/lung/copd/lmbb-campaign/index.htm>.

TABLE I. Provisional cases of infrequently reported notifiable diseases (<1,000 cases reported during the preceding year) — United States, week ending November 3, 2007 (44th Week)*

| Disease | Current week | Cum 2007 | 5-year weekly average† | Total cases reported for previous years | | | | | States reporting cases during current week (No.) |
|--|--------------|----------|------------------------|---|------|------|-------|-------|--|
| | | | | 2006 | 2005 | 2004 | 2003 | 2002 | |
| Anthrax | — | — | — | 1 | — | — | — | 2 | |
| Botulism: | | | | | | | | | |
| foodborne | — | 16 | 0 | 20 | 19 | 16 | 20 | 28 | |
| infant | — | 70 | 1 | 97 | 85 | 87 | 76 | 69 | |
| other (wound & unspecified) | — | 19 | 1 | 48 | 31 | 30 | 33 | 21 | |
| Brucellosis | 1 | 101 | 3 | 121 | 120 | 114 | 104 | 125 | FL (1) |
| Chancroid | 2 | 30 | 1 | 33 | 17 | 30 | 54 | 67 | TX (2) |
| Cholera | — | 5 | 0 | 9 | 8 | 5 | 2 | 2 | |
| Cyclosporiasis§ | — | 88 | 1 | 136 | 543 | 171 | 75 | 156 | |
| Diphtheria | — | — | 0 | — | — | — | 1 | 1 | |
| Domestic arboviral diseases§¶: | | | | | | | | | |
| California serogroup | — | 27 | 1 | 67 | 80 | 112 | 108 | 164 | |
| eastern equine | — | 3 | 0 | 8 | 21 | 6 | 14 | 10 | |
| Powassan | — | 1 | — | 1 | 1 | 1 | — | 1 | |
| St. Louis | — | 4 | 0 | 10 | 13 | 12 | 41 | 28 | |
| western equine | — | — | — | — | — | — | — | — | |
| Ehrlichiosis§: | | | | | | | | | |
| human granulocytic | 5 | 433 | 10 | 646 | 786 | 537 | 362 | 511 | NY (1), MN (4) |
| human monocytic | 4 | 550 | 7 | 578 | 506 | 338 | 321 | 216 | NY (1), NC (1), OK (2) |
| human (other & unspecified) | 2 | 141 | 1 | 231 | 112 | 59 | 44 | 23 | NC (1), TN (1) |
| <i>Haemophilus influenzae</i> **, | | | | | | | | | |
| invasive disease (age <5 yrs): | | | | | | | | | |
| serotype b | — | 14 | 0 | 29 | 9 | 19 | 32 | 34 | |
| nonserotype b | 1 | 115 | 3 | 175 | 135 | 135 | 117 | 144 | IN (1) |
| unknown serotype | 5 | 181 | 3 | 179 | 217 | 177 | 227 | 153 | OH (2), GA (2), UT (1) |
| Hansen disease§ | 2 | 51 | 2 | 66 | 87 | 105 | 95 | 96 | FL (1), CA (1) |
| Hantavirus pulmonary syndrome§ | — | 22 | 0 | 40 | 26 | 24 | 26 | 19 | |
| Hemolytic uremic syndrome, postdiarrheal§ | 4 | 183 | 4 | 288 | 221 | 200 | 178 | 216 | NY (1), OH (1), TN (1), CA (1) |
| Hepatitis C viral, acute | 3 | 554 | 19 | 802 | 652 | 713 | 1,102 | 1,835 | FL (1), TX (1), CA (1) |
| HIV infection, pediatric (age <13 yrs)†† | — | — | 6 | 52 | 380 | 436 | 504 | 420 | |
| Influenza-associated pediatric mortality§§§ | — | 73 | 0 | 43 | 45 | — | N | N | |
| Listeriosis | 5 | 577 | 18 | 875 | 896 | 753 | 696 | 665 | OH (1), IN (1), TN (1), TX (1), CA (1) |
| Measles¶¶ | — | 30 | 1 | 55 | 66 | 37 | 56 | 44 | |
| Meningococcal disease, invasive***: | | | | | | | | | |
| A, C, Y, & W-135 | 3 | 234 | 4 | 318 | 297 | — | — | — | PA (1), MN (2) |
| serogroup B | 2 | 110 | 2 | 193 | 156 | — | — | — | TX (2) |
| other serogroup | 1 | 26 | 1 | 32 | 27 | — | — | — | OH (1) |
| unknown serogroup | 7 | 497 | 12 | 651 | 765 | — | — | — | NY (1), OH (1), NC (1), FL (2), CA (2) |
| Mumps | 13 | 635 | 10 | 6,584 | 314 | 258 | 231 | 270 | NY (1), OH (1), MN (6), MO (3), WA (2) |
| Novel influenza A virus infections | — | 4 | — | N | N | N | N | N | |
| Plague | — | 6 | 0 | 17 | 8 | 3 | 1 | 2 | |
| Poliomyelitis, paralytic | — | — | — | — | 1 | — | — | — | |
| Poliovirus infection, nonparalytic§ | — | — | — | N | N | N | N | N | |
| Psittacosis§ | — | 6 | 0 | 21 | 16 | 12 | 12 | 18 | |
| Q fever§ | 1 | 142 | 1 | 169 | 136 | 70 | 71 | 61 | FL (1) |
| Rabies, human | — | — | 0 | 3 | 2 | 7 | 2 | 3 | |
| Rubella††† | — | 11 | — | 11 | 11 | 10 | 7 | 18 | |
| Rubella, congenital syndrome | — | — | — | 1 | 1 | — | 1 | 1 | |
| SARS-CoV§§§ | — | — | — | — | — | — | 8 | N | |
| Smallpox§ | — | — | — | — | — | — | — | — | |
| Streptococcal toxic-shock syndrome§ | — | 83 | 2 | 125 | 129 | 132 | 161 | 118 | |
| Syphilis, congenital (age <1 yr) | 3 | 376 | 8 | 380 | 329 | 353 | 413 | 412 | NY (1), VA (1), TX (1) |
| Tetanus | — | 16 | 1 | 41 | 27 | 34 | 20 | 25 | |
| Toxic-shock syndrome (staphylococcal)§ | 2 | 66 | 2 | 101 | 90 | 95 | 133 | 109 | PA (1), CA (1) |
| Trichinellosis | — | 6 | 0 | 15 | 16 | 5 | 6 | 14 | |
| Tularemia | — | 103 | 2 | 95 | 154 | 134 | 129 | 90 | |
| Typhoid fever | 4 | 291 | 6 | 353 | 324 | 322 | 356 | 321 | OH (1), NC (1), AZ (1), CA (1) |
| Vancomycin-intermediate <i>Staphylococcus aureus</i> § | — | 19 | 0 | 6 | 2 | — | N | N | |
| Vancomycin-resistant <i>Staphylococcus aureus</i> § | — | — | 0 | 1 | 3 | 1 | N | N | |
| Vibriosis (noncholera <i>Vibrio</i> species infections)§ | 3 | 318 | 2 | N | N | N | N | N | FL (1), AZ (1), CA (1) |
| Yellow fever | — | — | — | — | — | — | — | 1 | |

—: No reported cases. N: Not notifiable. Cum: Cumulative year-to-date counts.

* Incidence data for reporting year 2007 are provisional, whereas data for 2002, 2003, 2004, 2005, and 2006 are finalized.

† Calculated by summing the incidence counts for the current week, the 2 weeks preceding the current week, and the 2 weeks following the current week, for a total of 5 preceding years. Additional information is available at <http://www.cdc.gov/epo/dphsi/phs/files/5yearweeklyaverage.pdf>.

§ Not notifiable in all states. Data from states where the condition is not notifiable are excluded from this table, except in 2007 for the domestic arboviral diseases and influenza-associated pediatric mortality, and in 2003 for SARS-CoV. Reporting exceptions are available at <http://www.cdc.gov/epo/dphsi/phs/infdis.htm>.

¶ Includes both neuroinvasive and nonneuroinvasive. Updated weekly from reports to the Division of Vector-Borne Infectious Diseases, National Center for Zoonotic, Vector-Borne, and Enteric Diseases (ArboNET Surveillance). Data for West Nile virus are available in Table II.

** Data for *H. influenzae* (all ages, all serotypes) are available in Table II.

†† Updated monthly from reports to the Division of HIV/AIDS Prevention, National Center for HIV/AIDS, Viral Hepatitis, STD, and TB Prevention. Implementation of HIV reporting influences the number of cases reported. Updates of pediatric HIV data have been temporarily suspended until upgrading of the national HIV/AIDS surveillance data management system is completed. Data for HIV/AIDS, when available, are displayed in Table IV, which appears quarterly.

§§ Updated weekly from reports to the Influenza Division, National Center for Immunization and Respiratory Diseases. A total of 71 cases were reported for the 2006–07 flu season.

¶¶ No measles cases were reported for the current week.

*** Data for meningococcal disease (all serogroups) are available in Table II.

††† No rubella cases were reported for the current week.

§§§ Updated weekly from reports to the Division of Viral and Rickettsial Diseases, National Center for Zoonotic, Vector-Borne, and Enteric Diseases.

TABLE II. Provisional cases of selected notifiable diseases, United States, weeks ending November 3, 2007, and November 4, 2006 (44th Week)*

| Reporting area | Chlamydia† | | | | | Coccidioidomycosis | | | | | Cryptosporidiosis | | | | |
|----------------------|--------------|-------------------|--------|----------|----------|--------------------|-------------------|-----|----------|----------|-------------------|-------------------|-----|----------|----------|
| | Current week | Previous 52 weeks | | Cum 2007 | Cum 2006 | Current week | Previous 52 weeks | | Cum 2007 | Cum 2006 | Current week | Previous 52 weeks | | Cum 2007 | Cum 2006 |
| | | Med | Max | | | | Med | Max | | | | Med | Max | | |
| United States | 10,911 | 20,512 | 25,327 | 865,097 | 867,973 | 122 | 144 | 658 | 6,298 | 6,699 | 139 | 83 | 964 | 9,152 | 4,896 |
| New England | 187 | 699 | 1,357 | 28,932 | 28,421 | — | 0 | 1 | 2 | — | 2 | 5 | 39 | 283 | 346 |
| Connecticut | — | 217 | 829 | 8,684 | 8,404 | N | 0 | 0 | N | N | — | 0 | 39 | 39 | 38 |
| Maine§ | 45 | 50 | 74 | 2,168 | 1,919 | — | 0 | 0 | — | — | — | 1 | 6 | 45 | 40 |
| Massachusetts | — | 301 | 480 | 12,943 | 12,735 | — | 0 | 0 | — | — | 2 | 2 | 11 | 107 | 169 |
| New Hampshire | 52 | 39 | 74 | 1,801 | 1,659 | — | 0 | 1 | 2 | — | — | 1 | 5 | 47 | 41 |
| Rhode Island§ | 78 | 62 | 106 | 2,587 | 2,721 | — | 0 | 0 | — | — | — | 0 | 3 | 8 | 14 |
| Vermont§ | 12 | 20 | 45 | 749 | 983 | N | 0 | 0 | N | N | — | 1 | 3 | 37 | 44 |
| Mid. Atlantic | 1,263 | 2,735 | 4,284 | 119,255 | 106,340 | — | 0 | 0 | — | — | 8 | 10 | 113 | 1,201 | 575 |
| New Jersey | — | 399 | 528 | 16,859 | 17,201 | N | 0 | 0 | N | N | — | 0 | 6 | 41 | 42 |
| New York (Upstate) | 730 | 515 | 2,758 | 22,820 | 20,558 | N | 0 | 0 | N | N | 6 | 3 | 20 | 218 | 145 |
| New York City | — | 951 | 1,982 | 41,123 | 34,999 | N | 0 | 0 | N | N | — | 1 | 6 | 79 | 134 |
| Pennsylvania | 533 | 754 | 1,760 | 38,453 | 33,582 | N | 0 | 0 | N | N | 2 | 4 | 103 | 863 | 254 |
| E.N. Central | 317 | 3,135 | 6,220 | 139,299 | 145,187 | — | 1 | 3 | 26 | 39 | 21 | 18 | 130 | 1,537 | 1,220 |
| Illinois | — | 945 | 1,367 | 39,704 | 45,773 | — | 0 | 0 | — | — | — | 2 | 13 | 145 | 185 |
| Indiana | — | 397 | 646 | 17,179 | 16,797 | — | 0 | 0 | — | — | 4 | 1 | 12 | 92 | 86 |
| Michigan | 124 | 705 | 1,059 | 29,181 | 30,227 | — | 0 | 3 | 17 | 33 | 1 | 3 | 11 | 155 | 128 |
| Ohio | 69 | 750 | 3,647 | 37,564 | 34,938 | — | 0 | 1 | 9 | 6 | 12 | 5 | 61 | 519 | 318 |
| Wisconsin | 124 | 367 | 443 | 15,671 | 17,452 | N | 0 | 0 | N | N | 4 | 6 | 58 | 626 | 503 |
| W.N. Central | 631 | 1,212 | 1,465 | 51,522 | 52,674 | — | 0 | 54 | 7 | 1 | 22 | 13 | 123 | 1,346 | 786 |
| Iowa | 120 | 162 | 252 | 7,376 | 7,108 | N | 0 | 0 | N | N | — | 2 | 61 | 574 | 164 |
| Kansas | 148 | 154 | 294 | 6,847 | 6,726 | N | 0 | 0 | N | N | 3 | 1 | 15 | 87 | 76 |
| Minnesota | — | 256 | 314 | 10,254 | 10,932 | — | 0 | 54 | — | — | 17 | 3 | 34 | 254 | 193 |
| Missouri | 321 | 455 | 551 | 19,688 | 19,579 | — | 0 | 1 | 7 | 1 | 2 | 2 | 13 | 130 | 177 |
| Nebraska§ | — | 99 | 183 | 3,956 | 4,566 | N | 0 | 0 | N | N | — | 1 | 21 | 132 | 89 |
| North Dakota | — | 27 | 61 | 1,209 | 1,558 | N | 0 | 0 | N | N | — | 0 | 11 | 15 | 9 |
| South Dakota | 42 | 49 | 85 | 2,192 | 2,205 | N | 0 | 0 | N | N | — | 2 | 15 | 154 | 78 |
| S. Atlantic | 3,199 | 3,921 | 6,760 | 169,595 | 166,982 | — | 0 | 1 | 3 | 4 | 41 | 20 | 68 | 1,069 | 1,018 |
| Delaware | 122 | 64 | 140 | 2,899 | 3,052 | — | 0 | 0 | — | — | — | 0 | 4 | 20 | 13 |
| District of Columbia | — | 103 | 166 | 4,627 | 2,641 | — | 0 | 0 | — | — | — | 0 | 2 | 3 | 13 |
| Florida | 1,261 | 1,141 | 1,767 | 49,730 | 41,934 | N | 0 | 0 | N | N | 20 | 11 | 35 | 577 | 462 |
| Georgia | 9 | 640 | 3,822 | 20,966 | 30,387 | N | 0 | 0 | N | N | 8 | 4 | 22 | 202 | 243 |
| Maryland§ | 477 | 393 | 696 | 17,131 | 18,008 | — | 0 | 1 | 3 | 4 | 1 | 0 | 2 | 29 | 16 |
| North Carolina | 296 | 550 | 1,905 | 23,672 | 28,721 | — | 0 | 0 | — | — | — | 1 | 18 | 101 | 86 |
| South Carolina§ | 531 | 506 | 3,030 | 27,231 | 19,308 | N | 0 | 0 | N | N | 12 | 1 | 5 | 73 | 124 |
| Virginia§ | 486 | 479 | 621 | 20,836 | 20,465 | N | 0 | 0 | N | N | — | 1 | 4 | 54 | 52 |
| West Virginia | 17 | 60 | 94 | 2,503 | 2,466 | N | 0 | 0 | N | N | — | 0 | 5 | 10 | 9 |
| E.S. Central | 1,283 | 1,458 | 2,044 | 61,277 | 64,390 | — | 0 | 0 | — | — | 4 | 4 | 63 | 552 | 152 |
| Alabama§ | 54 | 367 | 577 | 14,209 | 19,946 | N | 0 | 0 | N | N | 3 | 1 | 14 | 105 | 52 |
| Kentucky | 242 | 150 | 691 | 7,011 | 6,844 | N | 0 | 0 | N | N | — | 1 | 40 | 240 | 38 |
| Mississippi | 455 | 342 | 959 | 16,607 | 16,024 | N | 0 | 0 | N | N | — | 0 | 11 | 91 | 24 |
| Tennessee§ | 532 | 506 | 721 | 23,450 | 21,576 | N | 0 | 0 | N | N | 1 | 1 | 19 | 116 | 38 |
| W.S. Central | 1,786 | 2,294 | 2,966 | 103,091 | 98,268 | — | 0 | 1 | 1 | 1 | 6 | 5 | 41 | 304 | 356 |
| Arkansas§ | 311 | 173 | 328 | 8,112 | 7,044 | N | 0 | 0 | N | N | 1 | 0 | 8 | 30 | 20 |
| Louisiana | 128 | 361 | 853 | 16,114 | 15,389 | — | 0 | 1 | 1 | 1 | — | 1 | 4 | 39 | 82 |
| Oklahoma | 156 | 263 | 467 | 11,087 | 10,508 | N | 0 | 0 | N | N | 5 | 1 | 11 | 113 | 35 |
| Texas§ | 1,191 | 1,490 | 1,946 | 67,778 | 65,327 | N | 0 | 0 | N | N | — | 2 | 29 | 122 | 219 |
| Mountain | 184 | 1,265 | 1,710 | 50,944 | 58,901 | 96 | 94 | 293 | 4,086 | 4,591 | 35 | 7 | 572 | 2,735 | 366 |
| Arizona | 61 | 489 | 834 | 19,271 | 19,290 | 96 | 90 | 293 | 3,961 | 4,467 | — | 0 | 6 | 40 | 27 |
| Colorado | — | 208 | 358 | 7,581 | 13,899 | N | 0 | 0 | N | N | — | 1 | 25 | 140 | 65 |
| Idaho§ | — | 56 | 253 | 2,883 | 2,639 | N | 0 | 0 | N | N | 25 | 0 | 71 | 420 | 35 |
| Montana§ | — | 46 | 73 | 1,489 | 2,209 | N | 0 | 0 | N | N | 2 | 1 | 7 | 61 | 131 |
| Nevada§ | — | 176 | 293 | 7,279 | 7,153 | — | 1 | 5 | 50 | 56 | — | 0 | 3 | 18 | 10 |
| New Mexico§ | — | 149 | 393 | 6,918 | 8,287 | — | 0 | 2 | 17 | 18 | — | 1 | 8 | 93 | 39 |
| Utah | 123 | 104 | 209 | 4,567 | 4,205 | — | 1 | 7 | 55 | 48 | 8 | 0 | 498 | 1,913 | 15 |
| Wyoming§ | — | 23 | 38 | 956 | 1,219 | — | 0 | 1 | 3 | 2 | — | 0 | 8 | 50 | 44 |
| Pacific | 2,061 | 3,368 | 4,362 | 141,182 | 146,810 | 26 | 45 | 311 | 2,173 | 2,063 | — | 2 | 19 | 125 | 77 |
| Alaska | 76 | 88 | 157 | 3,645 | 3,721 | N | 0 | 0 | N | N | — | 0 | 2 | 3 | 4 |
| California | 1,539 | 2,628 | 3,627 | 114,128 | 115,225 | 26 | 45 | 311 | 2,173 | 2,063 | — | 0 | 0 | — | — |
| Hawaii | — | 104 | 133 | 4,452 | 4,850 | N | 0 | 0 | N | N | — | 0 | 4 | 6 | 4 |
| Oregon§ | 239 | 160 | 394 | 7,355 | 8,082 | N | 0 | 0 | N | N | — | 2 | 15 | 116 | 69 |
| Washington | 207 | 289 | 621 | 11,602 | 14,932 | N | 0 | 0 | N | N | — | 0 | 0 | — | — |
| American Samoa | U | 0 | 32 | U | U | U | 0 | 0 | U | U | U | 0 | 0 | U | U |
| C.N.M.I. | U | — | — | U | U | U | — | — | U | U | U | — | — | U | U |
| Guam | — | 3 | 207 | 430 | 755 | — | 0 | 0 | — | — | — | 0 | 0 | — | — |
| Puerto Rico | 136 | 125 | 544 | 6,390 | 4,252 | N | 0 | 0 | N | N | N | 0 | 0 | N | N |
| U.S. Virgin Islands | U | 3 | 7 | U | U | U | 0 | 0 | U | U | U | 0 | 0 | U | U |

C.N.M.I.: Commonwealth of Northern Mariana Islands.

U: Unavailable. —: No reported cases. N: Not notifiable. Cum: Cumulative year-to-date counts. Med: Median. Max: Maximum.

* Incidence data for reporting year 2007 are provisional. Data for HIV/AIDS, AIDS, and TB, when available, are displayed in Table IV, which appears quarterly.

† Chlamydia refers to genital infections caused by *Chlamydia trachomatis*.

§ Contains data reported through the National Electronic Disease Surveillance System (NEDSS).

TABLE II. (Continued) Provisional cases of selected notifiable diseases, United States, weeks ending November 3, 2007, and November 4, 2006 (44th Week)*

| Reporting area | Giardiasis | | | | Gonorrhea | | | | | <i>Haemophilus influenzae</i> , invasive All ages, all serotypes† | | | | | |
|-----------------------------|--------------|-------------------|-------|----------|-----------|--------------|-------------------|-------|----------|--|--------------|-------------------|-----|----------|----------|
| | Current week | Previous 52 weeks | | Cum 2007 | Cum 2006 | Current week | Previous 52 weeks | | Cum 2007 | Cum 2006 | Current week | Previous 52 weeks | | Cum 2007 | Cum 2006 |
| | | Med | Max | | | | Med | Max | | | | Med | Max | | |
| United States | 212 | 305 | 1,513 | 14,060 | 15,200 | 3,730 | 6,716 | 8,941 | 281,491 | 302,746 | 26 | 44 | 184 | 1,899 | 1,929 |
| New England | 11 | 26 | 54 | 1,228 | 1,258 | 14 | 109 | 259 | 4,585 | 4,794 | 2 | 3 | 19 | 155 | 151 |
| Connecticut | — | 6 | 18 | 301 | 264 | — | 42 | 204 | 1,751 | 1,994 | 1 | 0 | 7 | 45 | 42 |
| Maine [§] | 2 | 3 | 10 | 165 | 159 | 2 | 2 | 8 | 104 | 111 | — | 0 | 3 | 12 | 18 |
| Massachusetts | 6 | 10 | 29 | 521 | 548 | — | 51 | 96 | 2,202 | 2,039 | 1 | 2 | 6 | 74 | 68 |
| New Hampshire | — | 0 | 3 | 23 | 21 | 4 | 2 | 8 | 129 | 166 | — | 0 | 2 | 15 | 11 |
| Rhode Island [§] | — | 0 | 15 | 71 | 100 | 7 | 8 | 18 | 351 | 426 | — | 0 | 10 | 7 | 4 |
| Vermont [§] | 3 | 3 | 9 | 147 | 166 | 1 | 1 | 5 | 48 | 58 | — | 0 | 1 | 2 | 8 |
| Mid. Atlantic | 34 | 55 | 127 | 2,374 | 2,992 | 341 | 715 | 1,537 | 30,863 | 28,364 | 4 | 10 | 27 | 379 | 398 |
| New Jersey | — | 4 | 11 | 142 | 414 | — | 114 | 159 | 4,911 | 4,654 | — | 1 | 5 | 51 | 68 |
| New York (Upstate) | 26 | 23 | 108 | 977 | 1,041 | 171 | 111 | 1,035 | 5,770 | 5,308 | 3 | 2 | 15 | 109 | 128 |
| New York City | 3 | 15 | 25 | 663 | 826 | — | 201 | 363 | 8,561 | 8,773 | — | 2 | 6 | 83 | 73 |
| Pennsylvania | 5 | 14 | 29 | 592 | 711 | 170 | 241 | 586 | 11,621 | 9,629 | 1 | 3 | 10 | 136 | 129 |
| E.N. Central | 24 | 46 | 80 | 2,036 | 2,455 | 152 | 1,258 | 2,593 | 56,456 | 60,032 | 3 | 6 | 15 | 245 | 323 |
| Illinois | — | 12 | 24 | 522 | 614 | — | 350 | 498 | 14,786 | 17,121 | — | 2 | 6 | 73 | 97 |
| Indiana | N | 0 | 0 | N | N | — | 164 | 307 | 7,393 | 7,462 | 1 | 1 | 7 | 50 | 71 |
| Michigan | — | 11 | 20 | 469 | 619 | 39 | 263 | 747 | 11,842 | 12,777 | — | 0 | 5 | 22 | 23 |
| Ohio | 20 | 15 | 37 | 698 | 706 | 39 | 331 | 1,572 | 16,940 | 16,771 | 2 | 2 | 5 | 86 | 72 |
| Wisconsin | 4 | 8 | 20 | 347 | 516 | 74 | 126 | 206 | 5,495 | 5,901 | — | 0 | 2 | 14 | 60 |
| W.N. Central | 18 | 21 | 553 | 997 | 1,589 | 164 | 380 | 514 | 16,139 | 16,529 | 8 | 2 | 24 | 116 | 136 |
| Iowa | 1 | 5 | 23 | 261 | 253 | 18 | 39 | 60 | 1,618 | 1,611 | — | 0 | 1 | 1 | 2 |
| Kansas | 7 | 2 | 8 | 122 | 173 | 28 | 43 | 86 | 1,924 | 1,895 | — | 0 | 2 | 9 | 16 |
| Minnesota | — | 0 | 514 | 12 | 479 | — | 66 | 86 | 2,657 | 2,754 | 7 | 0 | 17 | 56 | 72 |
| Missouri | 5 | 8 | 22 | 380 | 484 | 114 | 196 | 266 | 8,504 | 8,630 | — | 1 | 5 | 34 | 32 |
| Nebraska [§] | 5 | 2 | 8 | 125 | 102 | — | 26 | 57 | 1,140 | 1,192 | 1 | 0 | 2 | 14 | 8 |
| North Dakota | — | 0 | 16 | 18 | 19 | — | 2 | 7 | 78 | 127 | — | 0 | 2 | 2 | 6 |
| South Dakota | — | 1 | 6 | 79 | 79 | 4 | 6 | 11 | 218 | 320 | — | 0 | 0 | — | — |
| S. Atlantic | 50 | 57 | 106 | 2,432 | 2,360 | 1,415 | 1,575 | 3,209 | 66,298 | 75,088 | 3 | 11 | 34 | 490 | 478 |
| Delaware | 1 | 1 | 6 | 39 | 35 | 29 | 26 | 43 | 1,099 | 1,263 | — | 0 | 3 | 8 | 1 |
| District of Columbia | — | 0 | 7 | 34 | 55 | — | 47 | 71 | 1,906 | 1,526 | — | 0 | 2 | 3 | 7 |
| Florida | 35 | 24 | 47 | 1,099 | 949 | 528 | 478 | 717 | 20,340 | 20,529 | — | 3 | 8 | 139 | 145 |
| Georgia | 5 | 10 | 33 | 516 | 566 | 4 | 290 | 2,068 | 8,718 | 15,237 | 3 | 2 | 7 | 104 | 98 |
| Maryland [§] | 5 | 4 | 18 | 216 | 206 | 84 | 118 | 227 | 5,235 | 6,105 | — | 1 | 6 | 70 | 68 |
| North Carolina | — | 0 | 0 | — | — | 408 | 248 | 675 | 11,641 | 14,939 | — | 0 | 9 | 48 | 49 |
| South Carolina [§] | 2 | 2 | 8 | 87 | 92 | 186 | 206 | 1,361 | 11,394 | 8,993 | — | 1 | 4 | 40 | 30 |
| Virginia [§] | — | 9 | 21 | 396 | 431 | 168 | 122 | 220 | 5,196 | 5,694 | — | 1 | 22 | 53 | 61 |
| West Virginia | 2 | 0 | 21 | 45 | 26 | 8 | 18 | 37 | 769 | 802 | — | 0 | 6 | 25 | 19 |
| E.S. Central | 9 | 10 | 23 | 463 | 372 | 462 | 562 | 752 | 23,754 | 26,363 | 1 | 2 | 9 | 104 | 98 |
| Alabama [§] | 5 | 5 | 16 | 219 | 168 | 26 | 158 | 242 | 6,304 | 9,256 | 1 | 0 | 3 | 22 | 20 |
| Kentucky | N | 0 | 0 | N | N | 108 | 57 | 268 | 2,785 | 2,480 | — | 0 | 1 | 2 | 5 |
| Mississippi | N | 0 | 0 | N | N | 157 | 135 | 310 | 6,314 | 6,339 | — | 0 | 1 | 7 | 12 |
| Tennessee [§] | 4 | 5 | 16 | 244 | 204 | 171 | 184 | 260 | 8,351 | 8,288 | — | 1 | 6 | 73 | 61 |
| W.S. Central | 3 | 7 | 55 | 299 | 308 | 763 | 981 | 1,200 | 42,788 | 43,292 | 1 | 2 | 34 | 86 | 74 |
| Arkansas [§] | 1 | 2 | 13 | 102 | 117 | 119 | 78 | 120 | 3,478 | 3,670 | — | 0 | 2 | 8 | 8 |
| Louisiana | — | 1 | 9 | 74 | 80 | 81 | 220 | 384 | 9,334 | 9,296 | — | 0 | 2 | 6 | 19 |
| Oklahoma | 2 | 3 | 42 | 123 | 111 | 57 | 101 | 235 | 4,292 | 3,942 | 1 | 1 | 29 | 65 | 40 |
| Texas [§] | N | 0 | 0 | N | N | 506 | 575 | 731 | 25,684 | 26,384 | — | 0 | 3 | 7 | 7 |
| Mountain | 30 | 30 | 66 | 1,387 | 1,459 | 56 | 250 | 346 | 10,219 | 13,145 | 2 | 4 | 12 | 210 | 182 |
| Arizona | — | 3 | 11 | 165 | 140 | 21 | 105 | 175 | 4,037 | 4,848 | — | 1 | 6 | 78 | 76 |
| Colorado | — | 8 | 24 | 383 | 485 | — | 50 | 93 | 1,945 | 3,162 | — | 1 | 4 | 45 | 44 |
| Idaho [§] | 4 | 3 | 12 | 154 | 164 | — | 4 | 20 | 215 | 161 | 1 | 0 | 1 | 6 | 5 |
| Montana [§] | — | 2 | 8 | 93 | 91 | — | 1 | 7 | 57 | 172 | — | 0 | 1 | 2 | — |
| Nevada [§] | — | 2 | 8 | 89 | 99 | — | 44 | 87 | 1,781 | 2,439 | — | 0 | 2 | 9 | 13 |
| New Mexico [§] | — | 2 | 6 | 89 | 72 | — | 30 | 58 | 1,432 | 1,521 | — | 1 | 4 | 34 | 27 |
| Utah | 26 | 7 | 32 | 380 | 376 | 35 | 17 | 34 | 687 | 733 | 1 | 0 | 3 | 32 | 14 |
| Wyoming [§] | — | 1 | 4 | 34 | 32 | — | 1 | 5 | 65 | 109 | — | 0 | 1 | 4 | 3 |
| Pacific | 33 | 63 | 558 | 2,844 | 2,407 | 363 | 708 | 875 | 30,389 | 35,139 | 2 | 3 | 16 | 114 | 89 |
| Alaska | 1 | 1 | 5 | 63 | 101 | 10 | 10 | 27 | 411 | 517 | — | 0 | 4 | 14 | 10 |
| California | 16 | 45 | 93 | 1,902 | 1,914 | 302 | 605 | 734 | 26,375 | 29,006 | — | 0 | 10 | 34 | 25 |
| Hawaii | — | 1 | 4 | 59 | 45 | — | 12 | 22 | 527 | 807 | — | 0 | 2 | 10 | 15 |
| Oregon [§] | 5 | 9 | 16 | 386 | 347 | 22 | 23 | 63 | 918 | 1,243 | 2 | 1 | 6 | 54 | 39 |
| Washington | 11 | 8 | 449 | 434 | — | 29 | 52 | 142 | 2,158 | 3,566 | — | 0 | 5 | 2 | — |
| American Samoa | U | 0 | 0 | U | U | U | 0 | 2 | U | U | U | 0 | 0 | U | U |
| C.N.M.I. | U | — | — | U | U | U | — | — | U | U | U | — | — | U | U |
| Guam | — | 0 | 0 | — | — | — | 1 | 38 | 91 | 92 | — | 0 | 0 | — | 1 |
| Puerto Rico | — | 5 | 15 | 165 | 218 | 6 | 6 | 23 | 291 | 258 | — | 0 | 1 | 2 | 3 |
| U.S. Virgin Islands | U | 0 | 0 | U | U | U | 1 | 3 | U | U | U | 0 | 0 | U | U |

C.N.M.I.: Commonwealth of Northern Mariana Islands.

U: Unavailable. —: No reported cases. N: Not notifiable. Cum: Cumulative year-to-date counts. Med: Median. Max: Maximum.

* Incidence data for reporting year 2007 are provisional.

† Data for *H. influenzae* (age <5 yrs for serotype b, nonserotype b, and unknown serotype) are available in Table I.

§ Contains data reported through the National Electronic Disease Surveillance System (NEDSS).

TABLE II. (Continued) Provisional cases of selected notifiable diseases, United States, weeks ending November 3, 2007, and November 4, 2006 (44th Week)*

| Reporting area | Hepatitis (viral, acute), by type [†] | | | | | | | | | | Legionellosis | | | | |
|-----------------------------|--|-------------------|-----|----------|----------|--------------|-------------------|-----|----------|----------|---------------|-------------------|-----|----------|----------|
| | A | | | | | B | | | | | | | | | |
| | Current week | Previous 52 weeks | | Cum 2007 | Cum 2006 | Current week | Previous 52 weeks | | Cum 2007 | Cum 2006 | Current week | Previous 52 weeks | | Cum 2007 | Cum 2006 |
| | Med | Max | | | | Med | Max | | | | Med | Max | | | |
| United States | 24 | 52 | 201 | 2,342 | 3,002 | 65 | 77 | 405 | 3,342 | 3,748 | 26 | 43 | 106 | 1,931 | 2,343 |
| New England | 2 | 2 | 6 | 106 | 166 | — | 2 | 5 | 64 | 103 | 2 | 2 | 13 | 110 | 157 |
| Connecticut | 2 | 0 | 3 | 23 | 37 | — | 0 | 5 | 28 | 44 | 2 | 0 | 5 | 34 | 45 |
| Maine [§] | — | 0 | 1 | 3 | 8 | — | 0 | 2 | 11 | 21 | — | 0 | 1 | 5 | 9 |
| Massachusetts | — | 1 | 4 | 49 | 79 | — | 0 | 1 | 4 | 18 | — | 0 | 3 | 21 | 62 |
| New Hampshire | — | 0 | 3 | 12 | 22 | — | 0 | 1 | 5 | 8 | — | 0 | 2 | 7 | 13 |
| Rhode Island [§] | — | 0 | 2 | 11 | 12 | — | 0 | 3 | 13 | 9 | — | 0 | 6 | 34 | 21 |
| Vermont [§] | — | 0 | 1 | 8 | 8 | — | 0 | 1 | 3 | 3 | — | 0 | 2 | 9 | 7 |
| Mid. Atlantic | 1 | 8 | 18 | 360 | 343 | 1 | 9 | 21 | 379 | 460 | 8 | 12 | 35 | 617 | 851 |
| New Jersey | — | 2 | 6 | 89 | 97 | — | 1 | 8 | 73 | 148 | — | 1 | 11 | 75 | 107 |
| New York (Upstate) | 1 | 1 | 11 | 65 | 80 | 1 | 2 | 13 | 84 | 54 | 6 | 4 | 22 | 193 | 288 |
| New York City | — | 3 | 7 | 132 | 109 | — | 2 | 6 | 80 | 108 | — | 2 | 10 | 98 | 165 |
| Pennsylvania | — | 2 | 5 | 74 | 57 | — | 3 | 8 | 142 | 150 | 2 | 4 | 21 | 251 | 291 |
| E. N. Central | 3 | 6 | 13 | 251 | 309 | 1 | 9 | 23 | 370 | 431 | 5 | 8 | 27 | 429 | 520 |
| Illinois | — | 2 | 5 | 90 | 93 | — | 2 | 6 | 96 | 119 | — | 1 | 8 | 66 | 113 |
| Indiana | 1 | 0 | 7 | 30 | 23 | 1 | 0 | 21 | 47 | 46 | — | 1 | 7 | 45 | 40 |
| Michigan | — | 1 | 8 | 67 | 106 | — | 2 | 8 | 94 | 127 | — | 3 | 10 | 129 | 129 |
| Ohio | 2 | 1 | 4 | 57 | 47 | — | 2 | 7 | 113 | 107 | 5 | 3 | 17 | 181 | 197 |
| Wisconsin | — | 0 | 3 | 7 | 40 | — | 0 | 3 | 20 | 32 | — | 0 | 3 | 8 | 41 |
| W.N. Central | 1 | 2 | 18 | 144 | 120 | 1 | 2 | 15 | 112 | 127 | — | 1 | 9 | 83 | 74 |
| Iowa | — | 1 | 4 | 37 | 10 | — | 0 | 3 | 20 | 19 | — | 0 | 1 | 9 | 10 |
| Kansas | 1 | 0 | 1 | 4 | 26 | — | 0 | 2 | 7 | 10 | — | 0 | 1 | 2 | 7 |
| Minnesota | — | 0 | 17 | 62 | 17 | — | 0 | 13 | 18 | 18 | — | 0 | 6 | 23 | 23 |
| Missouri | — | 0 | 2 | 24 | 41 | 1 | 1 | 5 | 52 | 57 | — | 1 | 3 | 36 | 20 |
| Nebraska [§] | — | 0 | 2 | 12 | 17 | — | 0 | 2 | 10 | 18 | — | 0 | 1 | 9 | 9 |
| North Dakota | — | 0 | 3 | — | — | — | 0 | 1 | — | — | — | 0 | 1 | — | — |
| South Dakota | — | 0 | 1 | 5 | 9 | — | 0 | 1 | 5 | 5 | — | 0 | 1 | 4 | 5 |
| S. Atlantic | 9 | 10 | 21 | 438 | 479 | 16 | 19 | 56 | 827 | 1,043 | 4 | 7 | 25 | 314 | 402 |
| Delaware | — | 0 | 1 | 7 | 11 | — | 0 | 2 | 15 | 44 | — | 0 | 2 | 8 | 11 |
| District of Columbia | — | 0 | 5 | 14 | 7 | — | 0 | 2 | 1 | 7 | — | 0 | 4 | 1 | 27 |
| Florida | — | 3 | 7 | 133 | 186 | 9 | 7 | 14 | 297 | 355 | 3 | 2 | 10 | 130 | 138 |
| Georgia | 1 | 1 | 4 | 61 | 50 | 2 | 2 | 7 | 101 | 178 | — | 0 | 2 | 19 | 30 |
| Maryland [§] | 1 | 1 | 5 | 69 | 58 | 2 | 2 | 6 | 95 | 132 | 1 | 1 | 4 | 57 | 93 |
| North Carolina | 7 | 0 | 11 | 56 | 83 | 3 | 0 | 16 | 120 | 142 | — | 1 | 4 | 37 | 31 |
| South Carolina [§] | — | 0 | 4 | 15 | 23 | — | 1 | 5 | 52 | 80 | — | 0 | 2 | 15 | 5 |
| Virginia [§] | — | 1 | 5 | 75 | 55 | — | 3 | 8 | 107 | 57 | — | 1 | 4 | 37 | 54 |
| West Virginia | — | 0 | 2 | 8 | 6 | — | 0 | 23 | 39 | 48 | — | 0 | 4 | 10 | 13 |
| E. S. Central | — | 2 | 5 | 90 | 112 | — | 7 | 17 | 302 | 270 | 1 | 2 | 6 | 83 | 94 |
| Alabama [§] | — | 0 | 3 | 16 | 12 | — | 2 | 10 | 106 | 72 | — | 0 | 1 | 9 | 9 |
| Kentucky | — | 0 | 2 | 19 | 31 | — | 1 | 7 | 60 | 63 | — | 1 | 4 | 43 | 39 |
| Mississippi | — | 0 | 4 | 8 | 8 | — | 0 | 8 | 25 | 10 | — | 0 | 1 | — | 4 |
| Tennessee [§] | — | 1 | 5 | 47 | 61 | — | 3 | 8 | 111 | 125 | 1 | 1 | 4 | 31 | 42 |
| W.S. Central | — | 4 | 43 | 181 | 324 | 41 | 17 | 169 | 715 | 758 | — | 2 | 16 | 93 | 57 |
| Arkansas [§] | — | 0 | 2 | 10 | 44 | 1 | 1 | 7 | 58 | 68 | — | 0 | 3 | 8 | 4 |
| Louisiana | — | 0 | 3 | 24 | 27 | — | 1 | 4 | 62 | 49 | — | 0 | 1 | 3 | 10 |
| Oklahoma | — | 0 | 8 | 11 | 6 | 38 | 1 | 24 | 103 | 58 | — | 0 | 6 | 5 | 1 |
| Texas [§] | — | 3 | 39 | 136 | 247 | 2 | 13 | 135 | 492 | 583 | — | 2 | 13 | 77 | 42 |
| Mountain | 2 | 4 | 15 | 214 | 233 | 1 | 3 | 7 | 142 | 120 | 1 | 2 | 7 | 93 | 111 |
| Arizona | 2 | 3 | 11 | 153 | 139 | — | 1 | 4 | 49 | — | — | 0 | 5 | 37 | 35 |
| Colorado | — | 0 | 3 | 21 | 35 | — | 0 | 3 | 24 | 31 | — | 0 | 2 | 14 | 24 |
| Idaho [§] | — | 0 | 1 | 4 | 9 | — | 0 | 1 | 11 | 12 | — | 0 | 1 | 5 | 11 |
| Montana [§] | — | 0 | 2 | 9 | 10 | — | 0 | 3 | — | 2 | — | 0 | 1 | 3 | 6 |
| Nevada [§] | — | 0 | 2 | 9 | 11 | — | 1 | 3 | 29 | 32 | — | 0 | 2 | 7 | 8 |
| New Mexico [§] | — | 0 | 2 | 9 | 14 | — | 0 | 2 | 10 | 21 | — | 0 | 2 | 8 | 5 |
| Utah | — | 0 | 1 | 6 | 13 | 1 | 0 | 4 | 17 | 22 | 1 | 0 | 3 | 16 | 22 |
| Wyoming [§] | — | 0 | 1 | 3 | 2 | — | 0 | 1 | 2 | — | — | 0 | 1 | 3 | — |
| Pacific | 6 | 13 | 92 | 558 | 916 | 4 | 10 | 106 | 431 | 436 | 5 | 2 | 11 | 109 | 77 |
| Alaska | — | 0 | 1 | 4 | 1 | — | 0 | 1 | 6 | 8 | — | 0 | 1 | — | — |
| California | 6 | 10 | 40 | 482 | 869 | 3 | 7 | 31 | 318 | 349 | 4 | 1 | 11 | 79 | 77 |
| Hawaii | — | 0 | 2 | 4 | 11 | — | 0 | 2 | 6 | 7 | — | 0 | 1 | 2 | — |
| Oregon [§] | — | 1 | 2 | 25 | 35 | — | 1 | 4 | 55 | 72 | — | 0 | 1 | 9 | — |
| Washington | — | 0 | 52 | 43 | — | 1 | 1 | 74 | 46 | — | 1 | 0 | 3 | 19 | — |
| American Samoa | U | 0 | 0 | U | U | U | 0 | 0 | U | U | U | 0 | 0 | U | U |
| C.N.M.I. | U | — | — | U | U | U | — | — | U | U | U | — | — | U | U |
| Guam | — | 0 | 0 | — | — | — | 0 | 0 | — | — | — | 0 | 0 | — | — |
| Puerto Rico | — | 1 | 10 | 45 | 53 | — | 1 | 9 | 44 | 55 | — | 0 | 2 | 3 | 1 |
| U.S. Virgin Islands | U | 0 | 0 | U | U | U | 0 | 0 | U | U | U | 0 | 0 | U | U |

C.N.M.I.: Commonwealth of Northern Mariana Islands.

U: Unavailable. —: No reported cases. N: Not notifiable. Cum: Cumulative year-to-date counts. Med: Median. Max: Maximum.

* Incidence data for reporting year 2007 are provisional.

† Data for acute hepatitis C, viral are available in Table I.

§ Contains data reported through the National Electronic Disease Surveillance System (NEDSS).

TABLE II. (Continued) Provisional cases of selected notifiable diseases, United States, weeks ending November 3, 2007, and November 4, 2006 (44th Week)*

| Reporting area | Lyme disease | | | | | Malaria | | | | | Meningococcal disease, invasive† All serogroups | | | | |
|----------------------|--------------|-------------------|-------|----------|----------|--------------|-------------------|-----|----------|----------|--|-------------------|-----|----------|----------|
| | Current week | Previous 52 weeks | | Cum 2007 | Cum 2006 | Current week | Previous 52 weeks | | Cum 2007 | Cum 2006 | Current week | Previous 52 weeks | | Cum 2007 | Cum 2006 |
| | | Med | Max | | | | Med | Max | | | | Med | Max | | |
| United States | 219 | 255 | 1,194 | 17,257 | 17,285 | 7 | 21 | 105 | 912 | 1,227 | 13 | 21 | 87 | 867 | 949 |
| New England | 47 | 41 | 296 | 3,166 | 3,969 | — | 1 | 5 | 48 | 47 | — | 1 | 3 | 36 | 46 |
| Connecticut | 6 | 11 | 214 | 1,555 | 1,618 | — | 0 | 3 | 1 | 10 | — | 0 | 1 | 6 | 9 |
| Maine§ | 40 | 3 | 53 | 406 | 231 | — | 0 | 2 | 7 | 4 | — | 0 | 3 | 7 | 7 |
| Massachusetts | — | 3 | 27 | 211 | 1,402 | — | 0 | 3 | 29 | 22 | — | 0 | 2 | 19 | 22 |
| New Hampshire | 1 | 6 | 81 | 722 | 595 | — | 0 | 4 | 8 | 9 | — | 0 | 1 | — | 4 |
| Rhode Island§ | — | 0 | 93 | 151 | 31 | — | 0 | 1 | — | 1 | — | 0 | 1 | 1 | 2 |
| Vermont§ | — | 1 | 13 | 121 | 92 | — | 0 | 2 | 3 | 1 | — | 0 | 1 | 3 | 2 |
| Mid. Atlantic | 78 | 108 | 615 | 8,779 | 8,891 | — | 5 | 14 | 227 | 322 | 2 | 3 | 8 | 118 | 140 |
| New Jersey | — | 26 | 143 | 1,859 | 2,283 | — | 0 | 2 | — | 82 | — | 0 | 2 | 13 | 18 |
| New York (Upstate) | 66 | 49 | 426 | 2,922 | 3,325 | — | 1 | 5 | 56 | 40 | 1 | 1 | 3 | 31 | 31 |
| New York City | — | 1 | 22 | 168 | 285 | — | 3 | 7 | 135 | 157 | — | 0 | 4 | 26 | 53 |
| Pennsylvania | 12 | 40 | 298 | 3,830 | 2,998 | — | 1 | 4 | 36 | 43 | 1 | 1 | 5 | 48 | 38 |
| E.N. Central | 1 | 8 | 136 | 1,164 | 1,654 | 1 | 2 | 6 | 93 | 148 | 2 | 3 | 9 | 126 | 145 |
| Illinois | — | 1 | 12 | 111 | 107 | — | 1 | 6 | 41 | 76 | — | 1 | 3 | 40 | 39 |
| Indiana | — | 0 | 7 | 41 | 21 | — | 0 | 2 | 9 | 11 | — | 0 | 4 | 24 | 21 |
| Michigan | — | 1 | 5 | 53 | 51 | — | 0 | 2 | 15 | 17 | — | 0 | 3 | 23 | 24 |
| Ohio | — | 0 | 3 | 16 | 42 | 1 | 0 | 2 | 19 | 27 | 2 | 1 | 2 | 30 | 42 |
| Wisconsin | 1 | 6 | 123 | 943 | 1,433 | — | 0 | 2 | 9 | 17 | — | 0 | 3 | 9 | 19 |
| W.N. Central | 57 | 4 | 195 | 520 | 716 | — | 0 | 12 | 28 | 46 | 2 | 1 | 5 | 55 | 58 |
| Iowa | — | 1 | 11 | 100 | 94 | — | 0 | 1 | 3 | 2 | — | 0 | 3 | 12 | 17 |
| Kansas | — | 0 | 2 | 9 | 4 | — | 0 | 1 | 2 | 7 | — | 0 | 1 | 1 | 4 |
| Minnesota | 57 | 1 | 188 | 374 | 601 | — | 0 | 12 | 11 | 26 | 2 | 0 | 3 | 18 | 13 |
| Missouri | — | 0 | 6 | 29 | 5 | — | 0 | 1 | 5 | 6 | — | 0 | 3 | 14 | 14 |
| Nebraska§ | — | 0 | 1 | 6 | 11 | — | 0 | 1 | 6 | 3 | — | 0 | 2 | 5 | 6 |
| North Dakota | — | 0 | 7 | 2 | — | — | 0 | 1 | — | 1 | — | 0 | 3 | 2 | 1 |
| South Dakota | — | 0 | 0 | — | 1 | — | 0 | 1 | 1 | 1 | — | 0 | 1 | 3 | 3 |
| S. Atlantic | 33 | 57 | 175 | 3,358 | 1,893 | 3 | 4 | 13 | 215 | 301 | 3 | 3 | 11 | 145 | 164 |
| Delaware | 1 | 12 | 34 | 631 | 439 | — | 0 | 1 | 4 | 5 | — | 0 | 1 | 1 | 4 |
| District of Columbia | — | 0 | 7 | 13 | 55 | — | 0 | 2 | 3 | 3 | — | 0 | 1 | — | 1 |
| Florida | — | 1 | 11 | 77 | 19 | 1 | 1 | 7 | 52 | 52 | 2 | 1 | 7 | 56 | 64 |
| Georgia | — | 0 | 1 | 2 | 7 | 1 | 0 | 5 | 30 | 82 | — | 0 | 5 | 22 | 14 |
| Maryland§ | 32 | 27 | 111 | 1,803 | 1,067 | 1 | 1 | 5 | 53 | 69 | — | 0 | 2 | 20 | 13 |
| North Carolina | — | 0 | 8 | 42 | 27 | — | 0 | 4 | 20 | 28 | 1 | 0 | 6 | 17 | 24 |
| South Carolina§ | — | 0 | 2 | 23 | 18 | — | 0 | 1 | 6 | 9 | — | 0 | 2 | 14 | 19 |
| Virginia§ | — | 12 | 61 | 700 | 248 | — | 1 | 4 | 45 | 51 | — | 0 | 2 | 13 | 17 |
| West Virginia | — | 0 | 14 | 67 | 13 | — | 0 | 1 | 2 | 2 | — | 0 | 2 | 2 | 8 |
| E.S. Central | — | 1 | 5 | 47 | 31 | — | 0 | 3 | 31 | 23 | — | 1 | 4 | 42 | 39 |
| Alabama§ | — | 0 | 3 | 11 | 7 | — | 0 | 1 | 5 | 9 | — | 0 | 2 | 7 | 5 |
| Kentucky | — | 0 | 2 | 5 | 7 | — | 0 | 1 | 8 | 3 | — | 0 | 2 | 10 | 10 |
| Mississippi | — | 0 | 0 | — | 3 | — | 0 | 1 | 2 | 6 | — | 0 | 4 | 9 | 5 |
| Tennessee§ | — | 0 | 4 | 31 | 14 | — | 0 | 2 | 16 | 5 | — | 0 | 2 | 16 | 19 |
| W.S. Central | 3 | 1 | 6 | 60 | 22 | 1 | 1 | 29 | 74 | 91 | 2 | 2 | 15 | 87 | 84 |
| Arkansas§ | — | 0 | 1 | 1 | — | 1 | 0 | 1 | 2 | 4 | — | 0 | 2 | 9 | 10 |
| Louisiana | — | 0 | 1 | 2 | 1 | — | 0 | 2 | 14 | 8 | — | 0 | 4 | 25 | 34 |
| Oklahoma | — | 0 | 0 | — | — | — | 0 | 3 | 5 | 7 | — | 0 | 4 | 15 | 8 |
| Texas§ | 3 | 1 | 6 | 57 | 21 | — | 1 | 25 | 53 | 72 | 2 | 0 | 11 | 38 | 32 |
| Mountain | — | 0 | 4 | 36 | 27 | — | 1 | 6 | 50 | 68 | — | 1 | 4 | 53 | 64 |
| Arizona | — | 0 | 1 | 2 | 9 | — | 0 | 3 | 12 | 22 | — | 0 | 2 | 12 | 15 |
| Colorado | — | 0 | 1 | 2 | — | — | 0 | 2 | 16 | 17 | — | 0 | 2 | 17 | 20 |
| Idaho§ | — | 0 | 2 | 7 | 6 | — | 0 | 2 | 2 | 1 | — | 0 | 1 | 3 | 3 |
| Montana§ | — | 0 | 2 | 4 | — | — | 0 | 1 | 3 | 2 | — | 0 | 1 | 2 | 4 |
| Nevada§ | — | 0 | 2 | 8 | 3 | — | 0 | 1 | 2 | 4 | — | 0 | 1 | 4 | 6 |
| New Mexico§ | — | 0 | 1 | 4 | 3 | — | 0 | 1 | 4 | 5 | — | 0 | 1 | 2 | 6 |
| Utah | — | 0 | 2 | 6 | 5 | — | 0 | 3 | 11 | 17 | — | 0 | 2 | 11 | 6 |
| Wyoming§ | — | 0 | 1 | 3 | 1 | — | 0 | 0 | — | — | — | 0 | 1 | 2 | 4 |
| Pacific | — | 2 | 16 | 127 | 82 | 2 | 3 | 45 | 146 | 181 | 2 | 4 | 48 | 205 | 209 |
| Alaska | — | 0 | 1 | 7 | 3 | — | 0 | 1 | 2 | 23 | — | 0 | 1 | 1 | 3 |
| California | — | 2 | 9 | 114 | 73 | — | 2 | 7 | 106 | 139 | 2 | 3 | 10 | 146 | 162 |
| Hawaii | N | 0 | 0 | N | N | — | 0 | 1 | 2 | 8 | — | 0 | 2 | 8 | 8 |
| Oregon§ | — | 0 | 1 | 3 | 6 | — | 0 | 3 | 13 | 11 | — | 0 | 3 | 29 | 36 |
| Washington | — | 0 | 8 | 3 | — | 2 | 0 | 43 | 23 | — | — | 0 | 43 | 21 | — |
| American Samoa | U | 0 | 0 | U | U | U | 0 | 0 | U | U | U | 0 | 0 | — | — |
| C.N.M.I. | U | — | — | U | U | U | — | — | U | U | U | — | — | — | — |
| Guam | — | 0 | 0 | — | — | — | 0 | 0 | — | — | — | 0 | 0 | — | — |
| Puerto Rico | N | 0 | 0 | N | N | — | 0 | 1 | 3 | 1 | — | 0 | 1 | 6 | 6 |
| U.S. Virgin Islands | U | 0 | 0 | U | U | U | 0 | 0 | U | U | U | 0 | 0 | — | — |

C.N.M.I.: Commonwealth of Northern Mariana Islands.

U: Unavailable. —: No reported cases. N: Not notifiable. Cum: Cumulative year-to-date counts. Med: Median. Max: Maximum.

* Incidence data for reporting year 2007 are provisional.

† Data for meningococcal disease, invasive caused by serogroups A, C, Y, & W-135; serogroup B; other serogroup; and unknown serogroup are available in Table I.

§ Contains data reported through the National Electronic Disease Surveillance System (NEDSS).

TABLE II. (Continued) Provisional cases of selected notifiable diseases, United States, weeks ending November 3, 2007, and November 4, 2006 (44th Week)*

| Reporting area | Pertussis | | | | | Rabies, animal | | | | | Rocky Mountain spotted fever | | | | |
|----------------------|--------------|-------------------|-------|----------|----------|----------------|-------------------|-----|----------|----------|------------------------------|-------------------|-----|----------|----------|
| | Current week | Previous 52 weeks | | Cum 2007 | Cum 2006 | Current week | Previous 52 weeks | | Cum 2007 | Cum 2006 | Current week | Previous 52 weeks | | Cum 2007 | Cum 2006 |
| | | Med | Max | | | | Med | Max | | | | Med | Max | | |
| United States | 65 | 171 | 1,479 | 7,360 | 12,008 | 39 | 94 | 157 | 4,278 | 4,873 | 33 | 31 | 211 | 1,757 | 1,890 |
| New England | 6 | 28 | 77 | 1,172 | 1,529 | 7 | 11 | 22 | 504 | 418 | — | 0 | 10 | 4 | 11 |
| Connecticut | — | 2 | 5 | 59 | 102 | 4 | 4 | 10 | 202 | 182 | — | 0 | 0 | — | — |
| Maine† | — | 1 | 13 | 70 | 123 | 1 | 2 | 5 | 75 | 107 | — | 0 | 0 | — | — |
| Massachusetts | 4 | 24 | 46 | 928 | 966 | — | 0 | 0 | — | — | — | 0 | 1 | 4 | 10 |
| New Hampshire | — | 1 | 7 | 50 | 194 | 1 | 1 | 4 | 43 | 41 | — | 0 | 0 | — | 1 |
| Rhode Island† | — | 0 | 31 | 19 | 49 | — | 0 | 4 | 36 | 29 | — | 0 | 9 | — | — |
| Vermont† | 2 | 0 | 9 | 46 | 95 | 1 | 3 | 13 | 148 | 59 | — | 0 | 0 | — | — |
| Mid. Atlantic | 8 | 22 | 155 | 973 | 1,586 | — | 14 | 44 | 733 | 474 | — | 1 | 6 | 55 | 82 |
| New Jersey | — | 2 | 11 | 117 | 266 | — | 0 | 0 | — | — | — | 0 | 2 | 6 | 38 |
| New York (Upstate) | 6 | 12 | 146 | 498 | 716 | — | — | — | — | — | — | 0 | 1 | 3 | — |
| New York City | — | 3 | 6 | 105 | 86 | — | 1 | 5 | 40 | 31 | — | 0 | 3 | 24 | 22 |
| Pennsylvania | 2 | 6 | 15 | 253 | 518 | — | 13 | 44 | 693 | 443 | — | 0 | 3 | 22 | 22 |
| E.N. Central | 3 | 28 | 79 | 1,199 | 1,903 | 7 | 4 | 48 | 375 | 152 | — | 1 | 4 | 40 | 61 |
| Illinois | — | 3 | 23 | 112 | 478 | 1 | 1 | 15 | 112 | 46 | — | 0 | 3 | 23 | 25 |
| Indiana | — | 0 | 45 | 51 | 200 | 1 | 0 | 1 | 12 | 11 | — | 0 | 2 | 4 | 6 |
| Michigan | 1 | 7 | 20 | 248 | 521 | — | 1 | 27 | 175 | 44 | — | 0 | 1 | 3 | 4 |
| Ohio | 2 | 14 | 54 | 589 | 511 | 5 | 0 | 11 | 76 | 51 | — | 0 | 2 | 10 | 25 |
| Wisconsin | — | 3 | 24 | 199 | 193 | — | 0 | 0 | — | — | — | 0 | 0 | — | 1 |
| W.N. Central | 4 | 13 | 151 | 559 | 1,097 | 4 | 5 | 13 | 231 | 275 | 5 | 4 | 31 | 365 | 188 |
| Iowa | — | 2 | 16 | 116 | 272 | — | 0 | 3 | 30 | 56 | — | 0 | 4 | 13 | 5 |
| Kansas | 1 | 3 | 12 | 109 | 258 | — | 2 | 8 | 96 | 67 | — | 0 | 1 | 1 | 1 |
| Minnesota | — | 0 | 119 | 157 | 161 | 4 | 0 | 5 | 32 | 37 | — | 0 | 1 | 1 | 3 |
| Missouri | 2 | 2 | 9 | 68 | 277 | — | 0 | 3 | 39 | 63 | 5 | 4 | 25 | 333 | 154 |
| Nebraska† | 1 | 1 | 12 | 53 | 84 | — | 0 | 0 | — | — | — | 0 | 2 | 13 | 25 |
| North Dakota | — | 0 | 18 | 4 | 25 | — | 0 | 6 | 16 | 16 | — | 0 | 0 | — | — |
| South Dakota | — | 1 | 6 | 52 | 20 | — | 0 | 2 | 18 | 36 | — | 0 | 1 | 4 | — |
| S. Atlantic | 9 | 17 | 163 | 797 | 971 | 16 | 40 | 76 | 1,823 | 2,024 | 26 | 12 | 111 | 852 | 1,045 |
| Delaware | — | 0 | 2 | 11 | 3 | — | 0 | 0 | — | — | — | 0 | 2 | 14 | 21 |
| District of Columbia | — | 0 | 1 | 2 | 6 | — | 0 | 0 | — | — | — | 0 | 1 | 1 | 1 |
| Florida | 4 | 4 | 18 | 194 | 189 | — | 0 | 29 | 107 | 176 | — | 0 | 4 | 20 | 14 |
| Georgia | — | 0 | 4 | 25 | 86 | — | 4 | 34 | 234 | 236 | — | 0 | 5 | 33 | 49 |
| Maryland† | 5 | 2 | 8 | 99 | 127 | — | 7 | 18 | 304 | 373 | 2 | 1 | 7 | 57 | 75 |
| North Carolina | — | 4 | 112 | 273 | 171 | 5 | 9 | 19 | 439 | 458 | 24 | 4 | 96 | 545 | 754 |
| South Carolina† | — | 2 | 9 | 66 | 161 | — | 0 | 11 | 46 | 154 | — | 1 | 7 | 60 | 36 |
| Virginia† | — | 2 | 11 | 99 | 185 | 11 | 13 | 31 | 629 | 535 | — | 2 | 11 | 117 | 92 |
| West Virginia | — | 0 | 19 | 28 | 43 | — | 0 | 10 | 64 | 92 | — | 0 | 3 | 5 | 3 |
| E.S. Central | 1 | 6 | 32 | 353 | 305 | — | 3 | 9 | 140 | 224 | — | 5 | 16 | 230 | 345 |
| Alabama† | — | 2 | 18 | 79 | 73 | — | 0 | 2 | — | 76 | — | 1 | 9 | 74 | 83 |
| Kentucky | 1 | 0 | 1 | 9 | 56 | — | 0 | 3 | 18 | 27 | — | 0 | 2 | 5 | 3 |
| Mississippi | — | 1 | 29 | 193 | 33 | — | 0 | 1 | 1 | 4 | — | 0 | 2 | 13 | 7 |
| Tennessee† | — | 1 | 7 | 72 | 143 | — | 3 | 7 | 121 | 117 | — | 2 | 10 | 138 | 252 |
| W.S. Central | — | 20 | 226 | 821 | 740 | 1 | 1 | 27 | 73 | 875 | 2 | 1 | 168 | 170 | 110 |
| Arkansas† | — | 2 | 17 | 130 | 82 | 1 | 0 | 5 | 28 | 26 | — | 0 | 53 | 90 | 49 |
| Louisiana | — | 0 | 1 | 14 | 24 | — | 0 | 1 | — | 6 | — | 0 | 1 | 2 | 4 |
| Oklahoma | — | 0 | 36 | 6 | 18 | — | 0 | 22 | 45 | 58 | 2 | 0 | 108 | 47 | 28 |
| Texas† | — | 17 | 174 | 671 | 616 | — | 0 | 20 | — | 785 | — | 0 | 7 | 31 | 29 |
| Mountain | 23 | 22 | 61 | 933 | 2,233 | — | 3 | 14 | 202 | 204 | — | 0 | 4 | 33 | 46 |
| Arizona | — | 4 | 13 | 179 | 457 | — | 2 | 12 | 141 | 133 | — | 0 | 1 | 7 | 11 |
| Colorado | — | 6 | 17 | 230 | 657 | — | 0 | 0 | — | — | — | 0 | 2 | 4 | 4 |
| Idaho† | — | 1 | 5 | 34 | 82 | — | 0 | 0 | — | 24 | — | 0 | 1 | 4 | 14 |
| Montana† | — | 0 | 7 | 36 | 108 | — | 0 | 3 | 17 | 14 | — | 0 | 1 | 1 | 2 |
| Nevada† | — | 0 | 5 | 12 | 66 | — | 0 | 1 | 2 | 5 | — | 0 | 0 | — | — |
| New Mexico† | — | 1 | 7 | 61 | 121 | — | 0 | 2 | 8 | 9 | — | 0 | 1 | 4 | 8 |
| Utah | 23 | 8 | 47 | 361 | 668 | — | 0 | 2 | 16 | 11 | — | 0 | 1 | 1 | — |
| Wyoming† | — | 0 | 4 | 20 | 74 | — | 0 | 4 | 18 | 8 | — | 0 | 2 | 12 | 7 |
| Pacific | 11 | 13 | 547 | 553 | 1,644 | 4 | 4 | 10 | 197 | 227 | — | 0 | 3 | 8 | 2 |
| Alaska | — | 0 | 8 | 43 | 88 | — | 0 | 6 | 39 | 16 | N | 0 | 0 | N | N |
| California | — | 3 | 167 | 152 | 1,377 | 4 | 2 | 8 | 147 | 188 | — | 0 | 3 | 6 | — |
| Hawaii | — | 0 | 2 | 18 | 84 | N | 0 | 0 | N | N | N | 0 | 0 | N | N |
| Oregon† | — | 2 | 14 | 102 | 95 | — | 0 | 3 | 11 | 23 | — | 0 | 1 | 2 | 2 |
| Washington | 11 | 2 | 377 | 238 | — | — | 0 | 0 | — | — | N | 0 | 0 | N | N |
| American Samoa | U | 0 | 0 | U | U | U | 0 | 0 | U | U | U | 0 | 0 | U | U |
| C.N.M.I. | U | — | — | U | U | U | — | — | U | U | U | — | — | U | U |
| Guam | — | 0 | 1 | — | 61 | — | 0 | 0 | — | — | N | 0 | 0 | N | N |
| Puerto Rico | — | 0 | 1 | — | 3 | — | 0 | 5 | 37 | 74 | N | 0 | 0 | N | N |
| U.S. Virgin Islands | U | 0 | 0 | U | U | U | 0 | 0 | U | U | U | 0 | 0 | U | U |

C.N.M.I.: Commonwealth of Northern Mariana Islands.

U: Unavailable. —: No reported cases. N: Not notifiable. Cum: Cumulative year-to-date counts. Med: Median. Max: Maximum.

* Incidence data for reporting year 2007 are provisional.

† Contains data reported through the National Electronic Disease Surveillance System (NEDSS).

TABLE II. (Continued) Provisional cases of selected notifiable diseases, United States, weeks ending November 3, 2007, and November 4, 2006 (44th Week)*

| Reporting area | Salmonellosis | | | | | Shiga toxin-producing <i>E. coli</i> (STEC) [†] | | | | | Shigellosis | | | | |
|-----------------------------|---------------|-------------------|-------|----------|----------|--|-------------------|-----|----------|----------|--------------|-------------------|-------|----------|----------|
| | Current week | Previous 52 weeks | | Cum 2007 | Cum 2006 | Current week | Previous 52 weeks | | Cum 2007 | Cum 2006 | Current week | Previous 52 weeks | | Cum 2007 | Cum 2006 |
| | | Med | Max | | | | Med | Max | | | | Med | Max | | |
| United States | 535 | 869 | 2,338 | 36,973 | 37,563 | 55 | 80 | 336 | 3,765 | 3,500 | 262 | 348 | 1,287 | 13,975 | 11,824 |
| New England | 6 | 37 | 388 | 2,000 | 2,023 | 2 | 4 | 67 | 261 | 257 | — | 4 | 41 | 220 | 252 |
| Connecticut | — | 0 | 373 | 373 | 503 | — | 0 | 61 | 61 | 75 | — | 0 | 38 | 38 | 67 |
| Maine [§] | 3 | 3 | 14 | 124 | 114 | — | 1 | 4 | 34 | 37 | — | 0 | 5 | 14 | 4 |
| Massachusetts | 2 | 24 | 57 | 1,198 | 1,063 | 1 | 2 | 10 | 130 | 94 | — | 3 | 8 | 144 | 156 |
| New Hampshire | 1 | 3 | 10 | 143 | 193 | — | 0 | 4 | 19 | 24 | — | 0 | 2 | 5 | 6 |
| Rhode Island [§] | — | 2 | 20 | 90 | 83 | — | 0 | 2 | 6 | 8 | — | 0 | 9 | 16 | 13 |
| Vermont [§] | — | 1 | 5 | 72 | 67 | 1 | 0 | 1 | 11 | 19 | — | 0 | 1 | 3 | 6 |
| Mid. Atlantic | 31 | 103 | 181 | 4,705 | 4,712 | 4 | 7 | 63 | 370 | 421 | 9 | 12 | 47 | 616 | 794 |
| New Jersey | — | 16 | 35 | 642 | 982 | — | 1 | 20 | 31 | 107 | — | 2 | 9 | 107 | 276 |
| New York (Upstate) | 24 | 28 | 112 | 1,263 | 1,133 | 4 | 3 | 15 | 183 | 151 | 7 | 3 | 42 | 137 | 202 |
| New York City | 2 | 24 | 50 | 1,179 | 1,110 | — | 0 | 5 | 37 | 42 | — | 5 | 10 | 223 | 239 |
| Pennsylvania | 5 | 33 | 69 | 1,621 | 1,487 | — | 3 | 47 | 119 | 121 | 2 | 1 | 21 | 149 | 77 |
| E.N. Central | 52 | 99 | 252 | 4,833 | 4,904 | 6 | 10 | 34 | 561 | 603 | 40 | 34 | 131 | 1,890 | 1,214 |
| Illinois | — | 30 | 186 | 1,488 | 1,377 | — | 1 | 10 | 84 | 100 | — | 11 | 32 | 430 | 546 |
| Indiana | 22 | 15 | 54 | 634 | 766 | 5 | 1 | 13 | 91 | 78 | 12 | 2 | 13 | 119 | 137 |
| Michigan | 1 | 18 | 41 | 780 | 883 | — | 1 | 6 | 82 | 83 | — | 1 | 7 | 62 | 142 |
| Ohio | 28 | 27 | 65 | 1,166 | 1,080 | 1 | 3 | 11 | 144 | 158 | 28 | 12 | 104 | 1,075 | 166 |
| Wisconsin | 1 | 16 | 50 | 765 | 798 | — | 3 | 10 | 160 | 184 | — | 4 | 13 | 204 | 223 |
| W.N. Central | 34 | 50 | 102 | 2,376 | 2,322 | 6 | 13 | 45 | 678 | 595 | 20 | 35 | 156 | 1,612 | 1,544 |
| Iowa | 1 | 9 | 19 | 400 | 407 | 1 | 2 | 38 | 160 | 116 | — | 2 | 14 | 76 | 99 |
| Kansas | 4 | 7 | 20 | 296 | 319 | — | 0 | 4 | 39 | 23 | 1 | 0 | 3 | 21 | 128 |
| Minnesota | 8 | 13 | 44 | 604 | 602 | 2 | 4 | 17 | 228 | 181 | 5 | 5 | 24 | 214 | 192 |
| Missouri | 18 | 15 | 29 | 671 | 669 | 1 | 2 | 12 | 130 | 149 | 14 | 22 | 72 | 1,166 | 602 |
| Nebraska [§] | 3 | 5 | 13 | 226 | 169 | 2 | 1 | 6 | 75 | 72 | — | 0 | 7 | 20 | 118 |
| North Dakota | — | 0 | 23 | 36 | 29 | — | 0 | 12 | 2 | 6 | — | 0 | 127 | 5 | 92 |
| South Dakota | — | 3 | 11 | 143 | 127 | — | 0 | 5 | 44 | 48 | — | 1 | 30 | 110 | 313 |
| S. Atlantic | 251 | 222 | 427 | 9,928 | 9,862 | 14 | 15 | 37 | 610 | 538 | 51 | 88 | 177 | 3,904 | 2,808 |
| Delaware | — | 2 | 8 | 127 | 138 | — | 0 | 3 | 14 | 9 | — | 0 | 2 | 10 | 9 |
| District of Columbia | — | 0 | 4 | 16 | 54 | — | 0 | 1 | 1 | 2 | — | 0 | 5 | 4 | 15 |
| Florida | 181 | 85 | 176 | 4,020 | 4,028 | 13 | 2 | 8 | 133 | 78 | 33 | 43 | 76 | 1,988 | 1,290 |
| Georgia | 39 | 34 | 76 | 1,742 | 1,609 | — | 2 | 9 | 94 | 76 | 11 | 29 | 95 | 1,395 | 1,063 |
| Maryland [§] | 9 | 15 | 43 | 772 | 673 | 1 | 2 | 6 | 84 | 106 | 3 | 2 | 7 | 94 | 118 |
| North Carolina | — | 29 | 110 | 1,368 | 1,436 | — | 2 | 24 | 122 | 100 | — | 0 | 14 | 75 | 139 |
| South Carolina [§] | 16 | 18 | 51 | 889 | 913 | — | 0 | 3 | 18 | 12 | 4 | 2 | 20 | 139 | 77 |
| Virginia [§] | 1 | 19 | 38 | 834 | 887 | — | 3 | 8 | 126 | 143 | — | 3 | 11 | 139 | 93 |
| West Virginia | 5 | 2 | 31 | 160 | 124 | — | 0 | 5 | 18 | 12 | — | 0 | 36 | 60 | 4 |
| E.S. Central | 33 | 59 | 137 | 2,761 | 2,447 | 4 | 4 | 26 | 281 | 271 | 86 | 28 | 164 | 2,184 | 646 |
| Alabama [§] | 13 | 16 | 78 | 791 | 651 | — | 1 | 19 | 60 | 28 | 15 | 12 | 67 | 584 | 197 |
| Kentucky | 8 | 10 | 22 | 497 | 402 | 1 | 1 | 12 | 105 | 90 | 11 | 3 | 35 | 417 | 224 |
| Mississippi | 1 | 13 | 101 | 765 | 717 | — | 0 | 1 | 5 | 10 | 47 | 9 | 107 | 960 | 86 |
| Tennessee [§] | 11 | 17 | 34 | 708 | 677 | 3 | 2 | 10 | 111 | 143 | 13 | 3 | 27 | 223 | 139 |
| W.S. Central | 36 | 82 | 595 | 3,501 | 4,467 | — | 3 | 73 | 145 | 208 | 32 | 39 | 655 | 1,538 | 1,669 |
| Arkansas [§] | 27 | 14 | 51 | 740 | 807 | — | 1 | 3 | 32 | 44 | 5 | 2 | 10 | 79 | 101 |
| Louisiana | — | 14 | 35 | 573 | 974 | — | 0 | 2 | 3 | 17 | — | 8 | 22 | 349 | 226 |
| Oklahoma | 9 | 9 | 103 | 557 | 440 | — | 0 | 8 | 17 | 35 | 4 | 2 | 63 | 112 | 116 |
| Texas [§] | — | 41 | 470 | 1,631 | 2,246 | — | 2 | 68 | 93 | 112 | 23 | 24 | 580 | 998 | 1,226 |
| Mountain | 33 | 48 | 90 | 2,163 | 2,275 | 9 | 8 | 31 | 420 | 490 | 7 | 19 | 58 | 788 | 1,247 |
| Arizona | 20 | 17 | 44 | 821 | 762 | 4 | 2 | 8 | 97 | 97 | 6 | 10 | 33 | 474 | 625 |
| Colorado | — | 10 | 22 | 438 | 543 | — | 1 | 9 | 66 | 101 | — | 2 | 8 | 90 | 207 |
| Idaho [§] | 2 | 3 | 9 | 121 | 156 | 3 | 1 | 16 | 118 | 92 | 1 | 0 | 2 | 11 | 14 |
| Montana [§] | 1 | 2 | 6 | 87 | 115 | — | 0 | 0 | — | — | — | 1 | 13 | 21 | 37 |
| Nevada [§] | — | 4 | 10 | 148 | 192 | — | 0 | 3 | 18 | 30 | — | 0 | 9 | 47 | 115 |
| New Mexico [§] | — | 5 | 13 | 223 | 229 | — | 0 | 3 | 33 | 43 | — | 2 | 5 | 84 | 166 |
| Utah | 10 | 4 | 18 | 264 | 237 | 2 | 1 | 9 | 88 | 109 | — | 1 | 5 | 30 | 62 |
| Wyoming [§] | — | 1 | 4 | 61 | 41 | — | 0 | 1 | — | 18 | — | 0 | 19 | 31 | 21 |
| Pacific | 59 | 113 | 890 | 4,706 | 4,551 | 10 | 7 | 164 | 439 | 117 | 17 | 29 | 256 | 1,223 | 1,650 |
| Alaska | 1 | 1 | 5 | 72 | 68 | N | 0 | 0 | N | N | — | 0 | 2 | 7 | 7 |
| California | 46 | 94 | 260 | 3,583 | 3,908 | 4 | 4 | 33 | 223 | N | 14 | 24 | 84 | 1,006 | 1,485 |
| Hawaii | — | 5 | 16 | 217 | 211 | — | 0 | 4 | 18 | 17 | — | 0 | 2 | 21 | 45 |
| Oregon [§] | 1 | 7 | 15 | 270 | 362 | 3 | 1 | 11 | 78 | 100 | — | 1 | 6 | 67 | 113 |
| Washington | 11 | 10 | 625 | 564 | 2 | 3 | 1 | 162 | 120 | — | 3 | 1 | 170 | 122 | — |
| American Samoa | U | 0 | 0 | U | U | U | 0 | 0 | U | U | U | 0 | 0 | U | U |
| C.N.M.I. | U | — | — | U | U | U | — | — | U | U | U | — | — | U | U |
| Guam | — | 0 | 0 | — | — | N | 0 | 0 | N | N | — | 0 | 0 | — | — |
| Puerto Rico | — | 11 | 66 | 446 | 527 | — | 0 | 0 | — | — | — | 0 | 4 | 18 | 36 |
| U.S. Virgin Islands | U | 0 | 0 | U | U | U | 0 | 0 | U | U | U | 0 | 0 | U | U |

C.N.M.I.: Commonwealth of Northern Mariana Islands.

U: Unavailable. —: No reported cases. N: Not notifiable. Cum: Cumulative year-to-date counts. Med: Median. Max: Maximum.

* Incidence data for reporting year 2007 are provisional.

† Includes *E. coli* O157:H7; Shiga toxin-positive, serogroup non-O157; and Shiga toxin-positive, not serogrouped.

§ Contains data reported through the National Electronic Disease Surveillance System (NEDSS).

TABLE II. (Continued) Provisional cases of selected notifiable diseases, United States, weeks ending November 3, 2007, and November 4, 2006 (44th Week)*

| Reporting area | Streptococcal disease, invasive, group A | | | | | <i>Streptococcus pneumoniae</i> , invasive disease, nondrug resistant† Age <5 years | | | | |
|-----------------------------|--|-------------------|-----|----------|----------|--|-------------------|-----|----------|----------|
| | Current week | Previous 52 weeks | | Cum 2007 | Cum 2006 | Current week | Previous 52 weeks | | Cum 2007 | Cum 2006 |
| | | Med | Max | | | | Med | Max | | |
| United States | 43 | 98 | 261 | 4,188 | 4,521 | 23 | 29 | 108 | 1,307 | 1,108 |
| New England | — | 5 | 28 | 343 | 307 | 5 | 2 | 11 | 108 | 102 |
| Connecticut | — | 0 | 23 | 111 | 80 | — | 0 | 6 | 15 | 30 |
| Maine [§] | — | 0 | 3 | 23 | 17 | — | 0 | 1 | 2 | — |
| Massachusetts | — | 3 | 12 | 155 | 155 | 4 | 2 | 6 | 72 | 60 |
| New Hampshire | — | 0 | 4 | 32 | 35 | 1 | 0 | 2 | 9 | 8 |
| Rhode Island [§] | — | 0 | 12 | 6 | 7 | — | 0 | 2 | 8 | 4 |
| Vermont [§] | — | 0 | 2 | 16 | 13 | — | 0 | 1 | 2 | — |
| Mid. Atlantic | 1 | 17 | 41 | 769 | 814 | 4 | 4 | 37 | 225 | 159 |
| New Jersey | — | 3 | 10 | 108 | 131 | — | 1 | 4 | 26 | 55 |
| New York (Upstate) | 1 | 5 | 27 | 253 | 262 | 4 | 3 | 15 | 94 | 78 |
| New York City | — | 4 | 13 | 181 | 147 | — | 1 | 35 | 105 | 26 |
| Pennsylvania | — | 5 | 11 | 227 | 274 | N | 0 | 0 | N | N |
| E.N. Central | 7 | 16 | 33 | 695 | 857 | 1 | 5 | 14 | 192 | 289 |
| Illinois | — | 5 | 13 | 190 | 260 | — | 1 | 6 | 48 | 78 |
| Indiana | 3 | 2 | 12 | 105 | 102 | 1 | 0 | 10 | 18 | 47 |
| Michigan | 1 | 4 | 10 | 170 | 179 | — | 1 | 4 | 60 | 64 |
| Ohio | 3 | 4 | 14 | 200 | 214 | — | 1 | 7 | 54 | 58 |
| Wisconsin | — | 0 | 6 | 30 | 102 | — | 0 | 2 | 12 | 42 |
| W.N. Central | 8 | 5 | 32 | 286 | 303 | 6 | 2 | 8 | 100 | 98 |
| Iowa | — | 0 | 0 | — | — | — | 0 | 0 | — | — |
| Kansas | 1 | 0 | 3 | 29 | 50 | — | 0 | 1 | 1 | 11 |
| Minnesota | 7 | 0 | 29 | 144 | 136 | 4 | 0 | 6 | 68 | 61 |
| Missouri | — | 2 | 6 | 68 | 67 | 2 | 0 | 2 | 19 | 13 |
| Nebraska [§] | — | 0 | 3 | 23 | 28 | — | 0 | 1 | 11 | 10 |
| North Dakota | — | 0 | 2 | 13 | 12 | — | 0 | 2 | 1 | 3 |
| South Dakota | — | 0 | 2 | 9 | 10 | — | 0 | 0 | — | — |
| S. Atlantic | 15 | 21 | 52 | 1,067 | 1,022 | 1 | 5 | 14 | 235 | 66 |
| Delaware | — | 0 | 1 | 10 | 10 | — | 0 | 0 | — | — |
| District of Columbia | — | 0 | 3 | 8 | 15 | — | 0 | 1 | — | 1 |
| Florida | 9 | 6 | 16 | 269 | 255 | 1 | 1 | 5 | 58 | — |
| Georgia | — | 5 | 13 | 212 | 217 | — | 0 | 5 | 44 | — |
| Maryland [§] | 5 | 4 | 10 | 183 | 187 | — | 1 | 6 | 53 | 54 |
| North Carolina | 1 | 1 | 22 | 145 | 145 | — | 0 | 0 | — | — |
| South Carolina [§] | — | 1 | 7 | 84 | 56 | — | 1 | 4 | 42 | — |
| Virginia [§] | — | 2 | 11 | 131 | 112 | — | 0 | 4 | 31 | — |
| West Virginia | — | 0 | 3 | 25 | 25 | — | 0 | 4 | 7 | 11 |
| E.S. Central | 7 | 4 | 13 | 186 | 184 | — | 1 | 6 | 78 | 17 |
| Alabama [§] | N | 0 | 0 | N | N | N | 0 | 0 | N | N |
| Kentucky | — | 1 | 3 | 35 | 41 | — | 0 | 0 | — | — |
| Mississippi | N | 0 | 0 | N | N | — | 0 | 2 | 3 | 17 |
| Tennessee [§] | 7 | 3 | 13 | 151 | 143 | — | 1 | 6 | 75 | — |
| W.S. Central | 3 | 6 | 90 | 265 | 345 | 5 | 4 | 43 | 187 | 185 |
| Arkansas [§] | — | 0 | 2 | 17 | 24 | — | 0 | 2 | 10 | 20 |
| Louisiana | — | 0 | 4 | 16 | 16 | — | 0 | 4 | 27 | 20 |
| Oklahoma | 2 | 1 | 23 | 63 | 90 | 2 | 1 | 13 | 45 | 47 |
| Texas [§] | 1 | 3 | 64 | 169 | 215 | 3 | 2 | 27 | 105 | 98 |
| Mountain | 2 | 10 | 23 | 461 | 583 | 1 | 4 | 12 | 154 | 172 |
| Arizona | 1 | 4 | 11 | 180 | 302 | 1 | 2 | 7 | 92 | 94 |
| Colorado | — | 3 | 9 | 128 | 103 | — | 0 | 4 | 36 | 46 |
| Idaho [§] | — | 0 | 2 | 16 | 8 | — | 0 | 1 | 2 | 3 |
| Montana [§] | N | 0 | 0 | N | N | N | 0 | 0 | N | N |
| Nevada [§] | — | 0 | 1 | 2 | — | — | 0 | 1 | 1 | 2 |
| New Mexico [§] | — | 1 | 4 | 50 | 112 | — | 0 | 4 | 19 | 27 |
| Utah | 1 | 2 | 7 | 80 | 54 | — | 0 | 2 | 4 | — |
| Wyoming [§] | — | 0 | 1 | 5 | 4 | — | 0 | 0 | — | — |
| Pacific | — | 3 | 9 | 116 | 106 | — | 0 | 4 | 28 | 20 |
| Alaska | — | 0 | 3 | 31 | N | — | 0 | 2 | 26 | — |
| California | N | 0 | 0 | N | N | N | 0 | 0 | N | N |
| Hawaii | — | 2 | 9 | 85 | 106 | — | 0 | 2 | 2 | 20 |
| Oregon [§] | N | 0 | 0 | N | N | N | 0 | 0 | N | N |
| Washington | N | 0 | 0 | N | N | N | 0 | 0 | N | N |
| American Samoa | U | 0 | 0 | U | U | U | 0 | 0 | U | U |
| C.N.M.I. | U | — | — | U | U | U | — | — | U | U |
| Guam | — | 0 | 0 | — | — | N | 0 | 0 | N | N |
| Puerto Rico | — | 0 | 0 | — | — | N | 0 | 0 | N | N |
| U.S. Virgin Islands | U | 0 | 0 | U | U | U | 0 | 0 | U | U |

C.N.M.I.: Commonwealth of Northern Mariana Islands.

U: Unavailable. —: No reported cases. N: Not notifiable. Cum: Cumulative year-to-date counts. Med: Median. Max: Maximum.

* Incidence data for reporting year 2007 are provisional.

† Includes cases of invasive pneumococcal disease, in children aged <5 years, caused by *S. pneumoniae*, which is susceptible or for which susceptibility testing is not available (NNDS event code 11717).

§ Contains data reported through the National Electronic Disease Surveillance System (NEDSS).

TABLE II. (Continued) Provisional cases of selected notifiable diseases, United States, weeks ending November 3, 2007, and November 4, 2006 (44th Week)*

| Reporting area | <i>Streptococcus pneumoniae</i> , invasive disease, drug resistant† | | | | | | | | | | Syphilis, primary and secondary | | | | |
|----------------------|---|-------------------|-----|----------|----------|--------------|-------------------|-----|----------|----------|---------------------------------|-------------------|-----|----------|----------|
| | All ages | | | | | Age <5 years | | | | | | | | | |
| | Current week | Previous 52 weeks | | Cum 2007 | Cum 2006 | Current week | Previous 52 weeks | | Cum 2007 | Cum 2006 | Current week | Previous 52 weeks | | Cum 2007 | Cum 2006 |
| | | Med | Max | | | | Med | Max | | | | Med | Max | | |
| United States | 18 | 46 | 256 | 1,909 | 2,032 | 3 | 8 | 35 | 356 | 334 | 131 | 201 | 310 | 8,773 | 8,099 |
| New England | — | 2 | 12 | 87 | 108 | — | 0 | 3 | 11 | 3 | 2 | 5 | 13 | 223 | 172 |
| Connecticut | — | 1 | 5 | 50 | 82 | — | 0 | 2 | 4 | — | — | 0 | 10 | 28 | 37 |
| Maine§ | — | 0 | 2 | 9 | 6 | — | 0 | 2 | 2 | 1 | — | 0 | 2 | 9 | 8 |
| Massachusetts | — | 0 | 0 | — | — | — | 0 | 0 | — | — | — | 3 | 8 | 132 | 105 |
| New Hampshire | — | 0 | 0 | — | — | — | 0 | 0 | — | — | 1 | 0 | 3 | 26 | 11 |
| Rhode Island§ | — | 0 | 4 | 15 | 9 | — | 0 | 1 | 3 | — | 1 | 0 | 5 | 26 | 9 |
| Vermont§ | — | 0 | 2 | 13 | 11 | — | 0 | 1 | 2 | 2 | — | 0 | 1 | 2 | 2 |
| Mid. Atlantic | — | 2 | 9 | 102 | 125 | — | 0 | 5 | 22 | 19 | 6 | 28 | 44 | 1,274 | 983 |
| New Jersey | — | 0 | 0 | — | — | — | 0 | 0 | — | — | — | 4 | 8 | 170 | 148 |
| New York (Upstate) | — | 1 | 5 | 35 | 40 | — | 0 | 4 | 7 | 9 | 5 | 3 | 14 | 118 | 129 |
| New York City | — | 0 | 0 | — | — | — | 0 | 0 | — | — | — | 17 | 34 | 783 | 476 |
| Pennsylvania | — | 2 | 6 | 67 | 85 | — | 0 | 2 | 15 | 10 | 1 | 4 | 10 | 203 | 230 |
| E.N. Central | 3 | 9 | 40 | 444 | 432 | 1 | 2 | 7 | 65 | 72 | 6 | 15 | 27 | 650 | 745 |
| Illinois | — | 0 | 4 | 16 | 22 | — | 0 | 1 | 2 | 6 | — | 7 | 13 | 291 | 361 |
| Indiana | — | 3 | 31 | 121 | 119 | 1 | 0 | 5 | 23 | 19 | — | 1 | 6 | 45 | 79 |
| Michigan | — | 0 | 1 | 2 | 16 | — | 0 | 1 | 1 | 2 | — | 2 | 9 | 101 | 97 |
| Ohio | 3 | 5 | 38 | 305 | 275 | — | 1 | 5 | 39 | 45 | 6 | 4 | 9 | 166 | 150 |
| Wisconsin | N | 0 | 0 | N | N | — | 0 | 0 | — | — | — | 1 | 4 | 47 | 58 |
| W.N. Central | — | 2 | 124 | 119 | 87 | — | 0 | 15 | 9 | 13 | 1 | 7 | 14 | 297 | 250 |
| Iowa | — | 0 | 0 | — | — | — | 0 | 0 | — | — | — | 0 | 3 | 15 | 18 |
| Kansas | — | 0 | 11 | 63 | — | — | 0 | 2 | 5 | — | — | 0 | 2 | 18 | 22 |
| Minnesota | — | 0 | 123 | — | 51 | — | 0 | 15 | — | 10 | — | 1 | 4 | 62 | 43 |
| Missouri | — | 1 | 5 | 47 | 34 | — | 0 | 0 | — | 3 | 1 | 4 | 11 | 193 | 147 |
| Nebraska§ | — | 0 | 1 | 2 | 1 | — | 0 | 0 | — | — | — | 0 | 1 | 2 | 7 |
| North Dakota | — | 0 | 0 | — | — | — | 0 | 0 | — | — | — | 0 | 0 | — | 1 |
| South Dakota | — | 0 | 3 | 7 | 1 | — | 0 | 1 | 4 | — | — | 0 | 3 | 7 | 12 |
| S. Atlantic | 11 | 20 | 59 | 845 | 965 | 2 | 4 | 15 | 182 | 156 | 47 | 49 | 180 | 2,081 | 1,815 |
| Delaware | — | 0 | 1 | 8 | — | — | 0 | 1 | 2 | — | 3 | 0 | 3 | 15 | 16 |
| District of Columbia | — | 0 | 1 | 5 | 24 | — | 0 | 0 | — | 2 | — | 3 | 12 | 141 | 102 |
| Florida | 9 | 11 | 29 | 487 | 514 | 1 | 2 | 8 | 104 | 100 | 25 | 17 | 44 | 787 | 626 |
| Georgia | 2 | 7 | 17 | 291 | 329 | 1 | 1 | 10 | 68 | 54 | — | 7 | 153 | 320 | 328 |
| Maryland§ | — | 0 | 1 | 1 | — | — | 0 | 0 | — | — | 7 | 6 | 15 | 263 | 255 |
| North Carolina | — | 0 | 0 | — | — | — | 0 | 0 | — | — | 3 | 5 | 23 | 279 | 257 |
| South Carolina§ | — | 0 | 0 | — | — | — | 0 | 0 | — | — | — | 2 | 11 | 83 | 58 |
| Virginia§ | N | 0 | 0 | N | N | — | 0 | 0 | — | — | 9 | 4 | 16 | 188 | 164 |
| West Virginia | — | 1 | 17 | 53 | 98 | — | 0 | 1 | 8 | — | — | 0 | 1 | 5 | 9 |
| E.S. Central | 2 | 3 | 9 | 137 | 163 | — | 0 | 3 | 30 | 29 | 18 | 17 | 30 | 754 | 617 |
| Alabama§ | N | 0 | 0 | N | N | — | 0 | 0 | — | — | 4 | 7 | 16 | 302 | 276 |
| Kentucky | 1 | 0 | 2 | 20 | 32 | — | 0 | 1 | 2 | 6 | 1 | 1 | 7 | 51 | 61 |
| Mississippi | — | 0 | 2 | — | 22 | — | 0 | 0 | — | — | 4 | 2 | 9 | 92 | 65 |
| Tennessee§ | 1 | 2 | 8 | 117 | 109 | — | 0 | 3 | 28 | 23 | 9 | 7 | 14 | 309 | 215 |
| W.S. Central | 1 | 2 | 12 | 123 | 70 | — | 0 | 3 | 17 | 7 | 25 | 35 | 55 | 1,547 | 1,333 |
| Arkansas§ | 1 | 0 | 1 | 3 | 10 | — | 0 | 0 | — | 2 | 2 | 2 | 10 | 107 | 64 |
| Louisiana | — | 1 | 4 | 52 | 60 | — | 0 | 2 | 7 | 5 | — | 9 | 23 | 391 | 270 |
| Oklahoma | — | 0 | 10 | 68 | — | — | 0 | 2 | 10 | — | 1 | 1 | 4 | 49 | 60 |
| Texas§ | — | 0 | 0 | — | — | — | 0 | 0 | — | — | 22 | 21 | 39 | 1,000 | 939 |
| Mountain | 1 | 1 | 6 | 52 | 82 | — | 0 | 3 | 17 | 35 | 22 | 7 | 19 | 316 | 423 |
| Arizona | — | 0 | 0 | — | — | — | 0 | 0 | — | — | 22 | 3 | 12 | 147 | 163 |
| Colorado | — | 0 | 0 | — | — | — | 0 | 0 | — | — | — | 1 | 5 | 31 | 60 |
| Idaho§ | N | 0 | 0 | N | N | — | 0 | 0 | — | — | — | 0 | 1 | 1 | 3 |
| Montana§ | — | 0 | 0 | — | — | — | 0 | 0 | — | — | — | 0 | 2 | 3 | 1 |
| Nevada§ | — | 0 | 3 | 18 | 16 | — | 0 | 2 | 5 | 2 | — | 2 | 6 | 87 | 116 |
| New Mexico§ | — | 0 | 0 | — | — | — | 0 | 0 | — | — | — | 1 | 7 | 38 | 65 |
| Utah | 1 | 0 | 6 | 20 | 34 | — | 0 | 3 | 10 | 23 | — | 0 | 2 | 6 | 15 |
| Wyoming§ | — | 0 | 2 | 14 | 32 | — | 0 | 1 | 2 | 10 | — | 0 | 1 | 3 | — |
| Pacific | — | 0 | 0 | — | — | — | 0 | 1 | 3 | — | 4 | 39 | 58 | 1,631 | 1,761 |
| Alaska | — | 0 | 0 | — | — | — | 0 | 0 | — | — | — | 0 | 1 | 7 | 10 |
| California | N | 0 | 0 | N | N | — | 0 | 0 | — | — | 4 | 36 | 55 | 1,488 | 1,564 |
| Hawaii | — | 0 | 0 | — | — | — | 0 | 1 | 3 | — | — | 0 | 2 | 7 | 16 |
| Oregon§ | N | 0 | 0 | N | N | — | 0 | 0 | — | — | — | 0 | 6 | 14 | 17 |
| Washington | N | 0 | 0 | N | N | — | 0 | 0 | — | — | — | 2 | 12 | 115 | 154 |
| American Samoa | U | 0 | 0 | U | U | U | 0 | 1 | U | U | U | 0 | 0 | U | U |
| C.N.M.I. | U | — | — | U | U | U | — | — | U | U | U | — | — | U | U |
| Guam | N | 0 | 0 | N | N | — | 0 | 0 | — | — | — | 0 | 1 | 3 | — |
| Puerto Rico | N | 0 | 0 | N | N | — | 0 | 0 | — | — | 1 | 3 | 10 | 134 | 124 |
| U.S. Virgin Islands | U | 0 | 0 | U | U | U | 0 | 0 | U | U | U | 0 | 0 | U | U |

C.N.M.I.: Commonwealth of Northern Mariana Islands.

U: Unavailable. —: No reported cases. N: Not notified. Cum: Cumulative year-to-date counts. Med: Median. Max: Maximum.

* Incidence data for reporting year 2007 are provisional.

† Includes cases of invasive pneumococcal disease caused by drug-resistant *S. pneumoniae* (DRSP) (NNDSS event code 11720).

§ Contains data reported through the National Electronic Disease Surveillance System (NEDSS).

TABLE II. (Continued) Provisional cases of selected notifiable diseases, United States, weeks ending November 3, 2007, and November 4, 2006 (44th Week)*

| Reporting area | Varicella (chickenpox) | | | | | West Nile virus disease† | | | | | | | | | |
|----------------------|------------------------|-------------------|-------|----------|----------|--------------------------|-----|-----|----------|----------|-------------------|-----|-----|----------|----------|
| | Current week | Previous 52 weeks | | Cum 2007 | Cum 2006 | Neuroinvasive | | | | | Nonneuroinvasive§ | | | | |
| | | Med | Max | | | Current week | Med | Max | Cum 2007 | Cum 2006 | Current week | Med | Max | Cum 2007 | Cum 2006 |
| United States | 333 | 778 | 2,813 | 28,751 | 37,810 | — | 1 | 130 | 1,064 | 1,485 | 1 | 2 | 290 | 2,201 | 2,764 |
| New England | 6 | 15 | 124 | 589 | 3,644 | — | 0 | 2 | 7 | 9 | — | 0 | 2 | 5 | 3 |
| Connecticut | — | 0 | 76 | 2 | 1,365 | — | 0 | 2 | 4 | 7 | — | 0 | 1 | 1 | 2 |
| Maine¶ | — | 0 | 7 | — | 204 | — | 0 | 0 | — | — | — | 0 | 0 | — | — |
| Massachusetts | — | 0 | 1 | — | 1,141 | — | 0 | 2 | 3 | 2 | — | 0 | 2 | 3 | 1 |
| New Hampshire | 2 | 7 | 14 | 281 | 347 | — | 0 | 0 | — | — | — | 0 | 0 | — | — |
| Rhode Island¶ | — | 0 | 0 | — | — | — | 0 | 0 | — | — | — | 0 | 1 | 1 | — |
| Vermont¶ | 4 | 6 | 66 | 306 | 587 | — | 0 | 0 | — | — | — | 0 | 0 | — | — |
| Mid. Atlantic | 1 | 98 | 195 | 3,308 | 4,192 | — | 0 | 3 | 18 | 26 | — | 0 | 1 | 5 | 12 |
| New Jersey | N | 0 | 0 | N | N | — | 0 | 1 | 1 | 2 | — | 0 | 0 | — | 3 |
| New York (Upstate) | N | 0 | 0 | N | N | — | 0 | 0 | — | 8 | — | 0 | 0 | — | 4 |
| New York City | — | 0 | 0 | — | — | — | 0 | 3 | 12 | 8 | — | 0 | 1 | 2 | 4 |
| Pennsylvania | 1 | 98 | 195 | 3,308 | 4,192 | — | 0 | 1 | 5 | 8 | — | 0 | 1 | 3 | 1 |
| E.N. Central | 101 | 214 | 568 | 8,101 | 12,237 | — | 0 | 18 | 100 | 244 | — | 0 | 11 | 57 | 174 |
| Illinois | — | 2 | 11 | 114 | 123 | — | 0 | 13 | 58 | 127 | — | 0 | 8 | 35 | 88 |
| Indiana | — | 0 | 0 | — | — | — | 0 | 4 | 12 | 27 | — | 0 | 2 | 10 | 53 |
| Michigan | 14 | 88 | 258 | 3,279 | 3,926 | — | 0 | 5 | 13 | 43 | — | 0 | 0 | — | 12 |
| Ohio | 87 | 91 | 449 | 3,870 | 7,312 | — | 0 | 4 | 12 | 36 | — | 0 | 3 | 7 | 11 |
| Wisconsin | — | 19 | 80 | 838 | 876 | — | 0 | 2 | 5 | 11 | — | 0 | 1 | 5 | 10 |
| W.N. Central | 21 | 33 | 136 | 1,383 | 1,485 | — | 0 | 40 | 233 | 223 | — | 0 | 114 | 705 | 484 |
| Iowa | N | 0 | 0 | N | N | — | 0 | 4 | 10 | 22 | — | 0 | 3 | 14 | 15 |
| Kansas | 6 | 8 | 52 | 456 | 281 | — | 0 | 3 | 11 | 17 | — | 0 | 7 | 26 | 13 |
| Minnesota | — | 0 | 0 | — | — | — | 0 | 11 | 42 | 31 | — | 0 | 11 | 57 | 34 |
| Missouri | 15 | 15 | 78 | 780 | 1,087 | — | 0 | 9 | 55 | 51 | — | 0 | 2 | 11 | 11 |
| Nebraska¶ | N | 0 | 0 | N | N | — | 0 | 5 | 18 | 44 | — | 0 | 15 | 126 | 219 |
| North Dakota | — | 0 | 60 | 84 | 45 | — | 0 | 11 | 49 | 20 | — | 0 | 47 | 312 | 117 |
| South Dakota | — | 1 | 15 | 63 | 72 | — | 0 | 9 | 48 | 38 | — | 0 | 32 | 159 | 75 |
| S. Atlantic | 56 | 97 | 239 | 4,176 | 3,832 | — | 0 | 12 | 40 | 18 | — | 0 | 6 | 32 | 14 |
| Delaware | — | 1 | 4 | 38 | 62 | — | 0 | 1 | 1 | — | — | 0 | 0 | — | — |
| District of Columbia | — | 0 | 8 | 14 | 39 | — | 0 | 0 | — | — | — | 0 | 0 | — | 2 |
| Florida | 13 | 23 | 76 | 1,040 | N | — | 0 | 1 | 3 | 3 | — | 0 | 0 | — | — |
| Georgia | N | 0 | 0 | N | N | — | 0 | 8 | 23 | 2 | — | 0 | 4 | 23 | 6 |
| Maryland¶ | N | 0 | 0 | N | N | — | 0 | 2 | 6 | 10 | — | 0 | 2 | 4 | 1 |
| North Carolina | — | 0 | 0 | — | — | — | 0 | 1 | 3 | 1 | — | 0 | 1 | 2 | — |
| South Carolina¶ | 17 | 20 | 72 | 903 | 974 | — | 0 | 2 | 2 | 1 | — | 0 | 1 | 2 | — |
| Virginia¶ | — | 23 | 190 | 1,200 | 1,456 | — | 0 | 1 | 2 | — | — | 0 | 1 | 1 | 5 |
| West Virginia | 26 | 22 | 50 | 981 | 1,301 | — | 0 | 0 | — | 1 | — | 0 | 0 | — | — |
| E.S. Central | 10 | 8 | 571 | 483 | 28 | — | 0 | 11 | 64 | 118 | — | 0 | 13 | 87 | 98 |
| Alabama¶ | 10 | 8 | 571 | 480 | 26 | — | 0 | 2 | 16 | 8 | — | 0 | 1 | 4 | — |
| Kentucky | N | 0 | 0 | N | N | — | 0 | 1 | 3 | 5 | — | 0 | 0 | — | 1 |
| Mississippi | — | 0 | 2 | 3 | 2 | — | 0 | 7 | 41 | 89 | — | 0 | 11 | 80 | 91 |
| Tennessee¶ | N | 0 | 0 | N | N | — | 0 | 1 | 4 | 16 | — | 0 | 1 | 3 | 6 |
| W.S. Central | 122 | 156 | 1,640 | 8,537 | 10,019 | — | 0 | 27 | 195 | 370 | — | 0 | 13 | 81 | 234 |
| Arkansas¶ | — | 11 | 105 | 593 | 798 | — | 0 | 5 | 13 | 24 | — | 0 | 2 | 6 | 5 |
| Louisiana | — | 1 | 11 | 99 | 193 | — | 0 | 5 | 20 | 90 | — | 0 | 3 | 9 | 87 |
| Oklahoma | — | 0 | 0 | — | — | — | 0 | 10 | 50 | 27 | — | 0 | 7 | 38 | 21 |
| Texas¶ | 122 | 149 | 1,534 | 7,845 | 9,028 | — | 0 | 16 | 112 | 229 | — | 0 | 5 | 28 | 121 |
| Mountain | 16 | 54 | 131 | 2,140 | 2,373 | — | 0 | 35 | 254 | 389 | — | 1 | 139 | 993 | 1,483 |
| Arizona | — | 0 | 0 | — | — | — | 0 | 6 | 35 | 64 | — | 0 | 12 | 48 | 78 |
| Colorado | — | 21 | 62 | 825 | 1,246 | — | 0 | 17 | 96 | 66 | — | 0 | 65 | 459 | 279 |
| Idaho¶ | N | 0 | 0 | N | N | — | 0 | 2 | 8 | 139 | — | 0 | 19 | 101 | 857 |
| Montana¶ | 7 | 6 | 40 | 341 | N | — | 0 | 10 | 36 | 12 | — | 0 | 30 | 159 | 22 |
| Nevada¶ | — | 0 | 1 | 1 | 9 | — | 0 | 1 | 1 | 34 | — | 0 | 3 | 10 | 90 |
| New Mexico¶ | — | 5 | 37 | 309 | 327 | — | 0 | 8 | 38 | 3 | — | 0 | 6 | 22 | 5 |
| Utah | 9 | 13 | 73 | 630 | 734 | — | 0 | 8 | 25 | 56 | — | 0 | 7 | 29 | 102 |
| Wyoming¶ | — | 0 | 9 | 34 | 57 | — | 0 | 4 | 15 | 15 | — | 0 | 33 | 165 | 50 |
| Pacific | — | 0 | 9 | 34 | — | — | 0 | 17 | 153 | 88 | 1 | 0 | 22 | 236 | 262 |
| Alaska | — | 0 | 9 | 34 | N | — | 0 | 0 | — | — | — | 0 | 0 | — | — |
| California | — | 0 | 0 | — | N | — | 0 | 17 | 149 | 81 | 1 | 0 | 21 | 218 | 197 |
| Hawaii | — | 0 | 0 | — | — | — | 0 | 0 | — | — | — | 0 | 0 | — | — |
| Oregon¶ | N | 0 | 0 | N | N | — | 0 | 1 | 4 | 7 | — | 0 | 4 | 18 | 62 |
| Washington | N | 0 | 0 | N | N | — | 0 | 0 | — | — | — | 0 | 0 | — | 3 |
| American Samoa | U | 0 | 0 | U | U | U | 0 | 0 | U | U | U | 0 | 0 | U | U |
| C.N.M.I. | U | — | — | U | U | U | — | — | U | U | U | — | — | U | U |
| Guam | — | 5 | 30 | 168 | 219 | — | 0 | 0 | — | — | — | 0 | 0 | — | — |
| Puerto Rico | — | 11 | 30 | 467 | 504 | — | 0 | 0 | — | — | — | 0 | 0 | — | — |
| U.S. Virgin Islands | U | 0 | 0 | U | U | U | 0 | 0 | U | U | U | 0 | 0 | U | U |

C.N.M.I.: Commonwealth of Northern Mariana Islands.

U: Unavailable. —: No reported cases. N: Not notifiable. Cum: Cumulative year-to-date counts. Med: Median. Max: Maximum.

* Incidence data for reporting year 2007 are provisional.

† Updated weekly from reports to the Division of Vector-Borne Infectious Diseases, National Center for Zoonotic, Vector-Borne, and Enteric Diseases (ArboNET Surveillance). Data for California serogroup, eastern equine, Powassan, St. Louis, and western equine diseases are available in Table I.

§ Not notifiable in all states. Data from states where the condition is not notifiable are excluded from this table, except in 2007 for the domestic arboviral diseases and influenza-associated pediatric mortality, and in 2003 for SARS-CoV. Reporting exceptions are available at <http://www.cdc.gov/epo/dphsi/phs/infdis.htm>.

¶ Contains data reported through the National Electronic Disease Surveillance System (NEDSS).

TABLE III. Deaths in 122 U.S. cities,* week ending November 3, 2007 (44th Week)

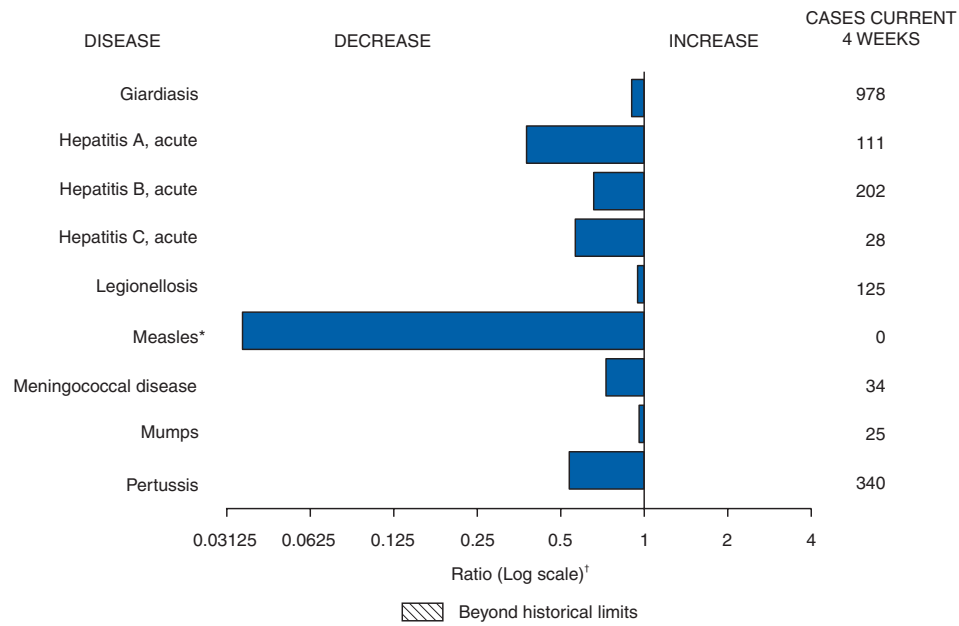
| Reporting Area | All causes, by age (years) | | | | | | | Reporting Area | All causes, by age (years) | | | | | | |
|-----------------------------|----------------------------|-------|-------|-------|------|----|------------------------|------------------------------|----------------------------|-------|-------|-------|------|-----|------------------------|
| | All Ages | >65 | 45-64 | 25-44 | 1-24 | <1 | P&I [†] Total | | All Ages | >65 | 45-64 | 25-44 | 1-24 | <1 | P&I [†] Total |
| New England | 502 | 345 | 109 | 30 | 7 | 11 | 47 | S. Atlantic | 1,069 | 640 | 263 | 85 | 37 | 44 | 58 |
| Boston, MA | 117 | 78 | 22 | 7 | 6 | 4 | 10 | Atlanta, GA | 110 | 53 | 28 | 14 | 7 | 8 | 6 |
| Bridgeport, CT | 26 | 11 | 13 | 2 | — | — | 2 | Baltimore, MD | 145 | 85 | 40 | 8 | 6 | 6 | 16 |
| Cambridge, MA | 16 | 13 | 3 | — | — | — | 2 | Charlotte, NC | 115 | 66 | 27 | 13 | 5 | 4 | 12 |
| Fall River, MA | 12 | 10 | 1 | 1 | — | — | — | Jacksonville, FL | 176 | 96 | 48 | 17 | 4 | 11 | 4 |
| Hartford, CT | 61 | 42 | 16 | 3 | — | — | 10 | Miami, FL | 105 | 69 | 20 | 9 | 4 | 3 | 4 |
| Lowell, MA | 18 | 13 | 1 | 3 | — | 1 | 2 | Norfolk, VA | 53 | 39 | 11 | — | — | 3 | 2 |
| Lynn, MA | 10 | 4 | 5 | 1 | — | — | 2 | Richmond, VA | 56 | 27 | 22 | 5 | 2 | — | 2 |
| New Bedford, MA | 29 | 28 | 1 | — | — | — | 2 | Savannah, GA | 52 | 27 | 19 | 5 | 1 | — | 3 |
| New Haven, CT | 19 | 13 | 4 | — | 1 | 1 | 4 | St. Petersburg, FL | 55 | 38 | 8 | 3 | 3 | 3 | 1 |
| Providence, RI | 63 | 43 | 10 | 8 | — | 2 | — | Tampa, FL | 185 | 126 | 38 | 10 | 5 | 6 | 8 |
| Somerville, MA | 5 | 4 | 1 | — | — | — | — | Washington, D.C. | U | U | U | U | U | U | U |
| Springfield, MA | 52 | 33 | 14 | 3 | — | 2 | 5 | Wilmington, DE | 17 | 14 | 2 | 1 | — | — | — |
| Waterbury, CT | 16 | 11 | 5 | — | — | — | 1 | E.S. Central | 761 | 506 | 172 | 52 | 18 | 13 | 55 |
| Worcester, MA | 58 | 42 | 13 | 2 | — | 1 | 7 | Birmingham, AL | 162 | 121 | 29 | 4 | 8 | — | 18 |
| Mid. Atlantic | 1,916 | 1,307 | 417 | 119 | 41 | 30 | 76 | Chattanooga, TN | 60 | 42 | 11 | 4 | — | 3 | 3 |
| Albany, NY | 42 | 30 | 11 | — | 1 | — | — | Knoxville, TN | 120 | 85 | 26 | 8 | — | 1 | 10 |
| Allentown, PA | 21 | 19 | 2 | — | — | — | — | Lexington, KY | 86 | 51 | 24 | 6 | — | 5 | 4 |
| Buffalo, NY | 56 | 41 | 10 | 1 | 2 | 2 | 2 | Memphis, TN | 116 | 74 | 27 | 12 | 3 | — | 9 |
| Camden, NJ | 23 | 11 | 5 | 4 | 3 | — | — | Mobile, AL | 25 | 17 | 3 | 4 | 1 | — | 2 |
| Elizabeth, NJ | 17 | 15 | 2 | — | — | — | 3 | Montgomery, AL | 48 | 37 | 9 | 1 | 1 | — | 2 |
| Erie, PA | 41 | 35 | 3 | 3 | — | — | 2 | Nashville, TN | 144 | 79 | 43 | 13 | 5 | 4 | 7 |
| Jersey City, NJ | 19 | 10 | 5 | 4 | — | — | 2 | W.S. Central | 1,366 | 847 | 336 | 79 | 47 | 57 | 83 |
| New York City, NY | 981 | 689 | 205 | 64 | 11 | 10 | 31 | Austin, TX | 75 | 48 | 20 | 3 | 2 | 2 | 6 |
| Newark, NJ | 37 | 15 | 12 | 4 | 4 | 2 | 1 | Baton Rouge, LA | 61 | 29 | 10 | 12 | 10 | — | — |
| Paterson, NJ | 30 | 11 | 9 | 4 | 1 | 5 | 3 | Corpus Christi, TX | 43 | 33 | 3 | 3 | — | 4 | 3 |
| Philadelphia, PA | 276 | 155 | 81 | 20 | 15 | 5 | 11 | Dallas, TX | 186 | 95 | 57 | 12 | 7 | 15 | 8 |
| Pittsburgh, PA [‡] | 31 | 22 | 6 | 1 | 2 | — | 1 | El Paso, TX | 99 | 74 | 12 | 8 | 2 | 3 | 2 |
| Reading, PA | 32 | 25 | 4 | 2 | — | 1 | — | Fort Worth, TX | 110 | 65 | 32 | 3 | 2 | 8 | 9 |
| Rochester, NY | 146 | 111 | 25 | 8 | — | 2 | 11 | Houston, TX | 313 | 189 | 92 | 14 | 6 | 12 | 21 |
| Schenectady, NY | 23 | 15 | 7 | — | 1 | — | 2 | Little Rock, AR | 64 | 33 | 22 | 4 | 4 | 1 | — |
| Scranton, PA | 18 | 12 | 5 | — | — | 1 | — | New Orleans, LA [†] | U | U | U | U | U | U | U |
| Syracuse, NY | 57 | 42 | 12 | 1 | — | 2 | 2 | San Antonio, TX | 221 | 151 | 44 | 11 | 8 | 7 | 20 |
| Trenton, NJ | 30 | 20 | 7 | 3 | — | — | 1 | Shreveport, LA | 64 | 42 | 13 | 4 | 1 | 4 | 7 |
| Utica, NY | 17 | 13 | 4 | — | — | — | 1 | Tulsa, OK | 130 | 88 | 31 | 5 | 5 | 1 | 7 |
| Yonkers, NY | 19 | 16 | 2 | — | 1 | — | 3 | Mountain | 976 | 644 | 200 | 80 | 26 | 24 | 58 |
| E.N. Central | 2,051 | 1,312 | 516 | 119 | 60 | 43 | 128 | Albuquerque, NM | 94 | 64 | 17 | 5 | 4 | 4 | 3 |
| Akron, OH | 59 | 35 | 11 | 1 | 12 | — | 1 | Boise, ID | 59 | 37 | 16 | 3 | 1 | 2 | 3 |
| Canton, OH | 44 | 32 | 11 | 1 | — | — | 3 | Colorado Springs, CO | 80 | 51 | 15 | 11 | 2 | 1 | 4 |
| Chicago, IL | 323 | 181 | 87 | 31 | 12 | 11 | 28 | Denver, CO | 73 | 48 | 18 | 4 | 1 | 2 | 7 |
| Cincinnati, OH | 90 | 52 | 24 | 8 | — | 6 | 14 | Las Vegas, NV | 275 | 189 | 58 | 20 | 6 | 2 | 15 |
| Cleveland, OH | 212 | 144 | 50 | 11 | 5 | 2 | 6 | Ogden, UT | 28 | 18 | 5 | 4 | 1 | — | 5 |
| Columbus, OH | 173 | 109 | 52 | 6 | 2 | 4 | 9 | Phoenix, AZ | 119 | 68 | 21 | 19 | 8 | 1 | 6 |
| Dayton, OH | 126 | 97 | 17 | 6 | 4 | 2 | 7 | Pueblo, CO | 41 | 29 | 8 | 4 | — | — | 1 |
| Detroit, MI | 166 | 77 | 66 | 11 | 7 | 5 | 9 | Salt Lake City, UT | 113 | 69 | 27 | 4 | 1 | 12 | 12 |
| Evansville, IN | 45 | 35 | 6 | 4 | — | — | 4 | Tucson, AZ | 94 | 71 | 15 | 6 | 2 | — | 2 |
| Fort Wayne, IN | 58 | 39 | 15 | 3 | 1 | — | 4 | Pacific | 1,215 | 811 | 274 | 76 | 22 | 31 | 83 |
| Gary, IN | 12 | 5 | 5 | 2 | — | — | 1 | Berkeley, CA | 17 | 11 | 3 | 2 | — | 1 | 2 |
| Grand Rapids, MI | 57 | 39 | 15 | 2 | 1 | — | 4 | Fresno, CA | U | U | U | U | U | U | U |
| Indianapolis, IN | 174 | 108 | 45 | 8 | 6 | 7 | 10 | Glendale, CA | U | U | U | U | U | U | U |
| Lansing, MI | 50 | 36 | 12 | 2 | — | — | 4 | Honolulu, HI | 64 | 51 | 9 | 3 | — | 1 | 5 |
| Milwaukee, WI | 104 | 57 | 29 | 8 | 7 | 3 | — | Long Beach, CA | 61 | 41 | 12 | 4 | 2 | 2 | 8 |
| Peoria, IL | 55 | 44 | 11 | — | — | — | 9 | Los Angeles, CA | U | U | U | U | U | U | U |
| Rockford, IL | 39 | 29 | 8 | 1 | 1 | — | — | Pasadena, CA | 28 | 20 | 5 | 1 | 1 | 1 | 6 |
| South Bend, IN | 74 | 53 | 17 | 3 | — | 1 | 4 | Portland, OR | 117 | 74 | 26 | 9 | 3 | 5 | 11 |
| Toledo, OH | 116 | 80 | 24 | 9 | 1 | 2 | 5 | Sacramento, CA | 183 | 121 | 44 | 12 | 1 | 5 | 14 |
| Youngstown, OH | 74 | 60 | 11 | 2 | 1 | — | 6 | San Diego, CA | 165 | 110 | 32 | 14 | 4 | 4 | 6 |
| W.N. Central | 580 | 368 | 150 | 36 | 14 | 11 | 40 | San Francisco, CA | 113 | 64 | 34 | 6 | 3 | 6 | 9 |
| Des Moines, IA | 58 | 48 | 8 | 2 | — | — | 5 | San Jose, CA | 173 | 122 | 35 | 11 | 3 | 2 | 12 |
| Duluth, MN | 28 | 17 | 11 | — | — | — | 3 | Santa Cruz, CA | 32 | 25 | 7 | — | — | — | 3 |
| Kansas City, KS | 22 | 11 | 7 | 1 | 3 | — | — | Seattle, WA | 114 | 67 | 37 | 5 | 1 | 4 | 5 |
| Kansas City, MO | 78 | 49 | 19 | 5 | 3 | 2 | 9 | Spokane, WA | 53 | 39 | 13 | 1 | — | — | 2 |
| Lincoln, NE | 39 | 31 | 7 | 1 | — | — | 6 | Tacoma, WA | 95 | 66 | 17 | 8 | 4 | — | — |
| Minneapolis, MN | 61 | 32 | 20 | 4 | 1 | 4 | 5 | Total | 10,436** | 6,780 | 2,437 | 676 | 272 | 264 | 628 |
| Omaha, NE | 80 | 48 | 22 | 8 | 1 | 1 | 9 | | | | | | | | |
| St. Louis, MO | 77 | 43 | 22 | 8 | 2 | 2 | 1 | | | | | | | | |
| St. Paul, MN | 65 | 42 | 17 | 3 | 1 | 2 | 2 | | | | | | | | |
| Wichita, KS | 72 | 47 | 17 | 4 | 3 | — | — | | | | | | | | |

U: Unavailable. —:No reported cases.

* Mortality data in this table are voluntarily reported from 122 cities in the United States, most of which have populations of $\geq 100,000$. A death is reported by the place of its occurrence and by the week that the death certificate was filed. Fetal deaths are not included.[†] Pneumonia and influenza.[‡] Because of changes in reporting methods in this Pennsylvania city, these numbers are partial counts for the current week. Complete counts will be available in 4 to 6 weeks.[§] Because of Hurricane Katrina, weekly reporting of deaths has been temporarily disrupted.

** Total includes unknown ages.

FIGURE I. Selected notifiable disease reports, United States, comparison of provisional 4-week totals November 3, 2007, with historical data



* No measles cases were reported for the current 4-week period yielding a ratio for week 44 of zero (0).
 † Ratio of current 4-week total to mean of 15 4-week totals (from previous, comparable, and subsequent 4-week periods for the past 5 years). The point where the hatched area begins is based on the mean and two standard deviations of these 4-week totals.

Notifiable Disease Data Team and 122 Cities Mortality Data Team
 Patsy A. Hall
 Deborah A. Adams Rosaline Dhara
 Willie J. Anderson Carol Worsham
 Lenee Blanton Pearl C. Sharp

The *Morbidity and Mortality Weekly Report (MMWR)* Series is prepared by the Centers for Disease Control and Prevention (CDC) and is available free of charge in electronic format. To receive an electronic copy each week, send an e-mail message to listserv@listserv.cdc.gov. The body content should read *SUBscribe mmwr-toc*. Electronic copy also is available from CDC's Internet server at <http://www.cdc.gov/mmwr> or from CDC's file transfer protocol server at <ftp://ftp.cdc.gov/pub/publications/mmwr>. Paper copy subscriptions are available through the Superintendent of Documents, U.S. Government Printing Office, Washington, DC 20402; telephone 202-512-1800.

Data in the weekly *MMWR* are provisional, based on weekly reports to CDC by state health departments. The reporting week concludes at close of business on Friday; compiled data on a national basis are officially released to the public on the following Friday. Data are compiled in the National Center for Public Health Informatics, Division of Integrated Surveillance Systems and Services. Address all inquiries about the *MMWR* Series, including material to be considered for publication, to Editor, *MMWR* Series, Mailstop E-90, CDC, 1600 Clifton Rd., N.E., Atlanta, GA 30333 or to www.mmwrq@cdc.gov.

All material in the *MMWR* Series is in the public domain and may be used and reprinted without permission; citation as to source, however, is appreciated.

Use of trade names and commercial sources is for identification only and does not imply endorsement by the U.S. Department of Health and Human Services.

References to non-CDC sites on the Internet are provided as a service to *MMWR* readers and do not constitute or imply endorsement of these organizations or their programs by CDC or the U.S. Department of Health and Human Services. CDC is not responsible for the content of these sites. URL addresses listed in *MMWR* were current as of the date of publication.