

# Help Protect the Greater Yellowstone Area's Native Aquatic Species and Natural Ecosystems

For additional information



## STOP AQUATIC HITCHHIKERS!™

Prevent the transport of nuisance species.  
Clean all recreational equipment.

### Protect Your Waters

<http://www.ProtectYourWaters.net>

### 100th Meridian Initiative

<http://www.100thmeridian.org>

### U.S. Geological Survey

<http://nas.er.usgs.gov>

### National Sea Grant College Program

<http://www.sgnis.org>

### Grand Teton National Park

<http://www.nps.gov/grte/planyourvisit/fish.htm>

### Yellowstone National Park

<http://www.nps.gov/yell/planyourvisit/fishing.htm>

You can also contact

Dr. Todd M. Koel, Supervisory Fisheries Biologist  
Yellowstone Center for Resources, PO Box 168  
Yellowstone National Park, Wyoming 82190



## from entering or spreading throughout the Greater Yellowstone Area



spiny  
waterflea



zebra mussel



whirling  
disease



fishhook  
waterflea



bighead carp



New Zealand  
mud snail



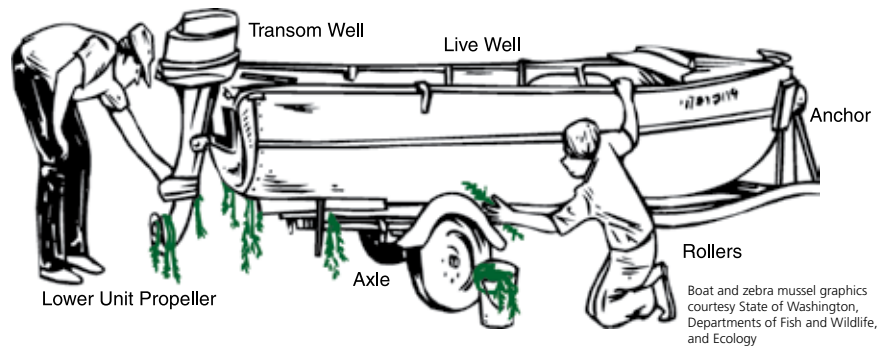
Eurasian  
watermilfoil

## PREVENTION

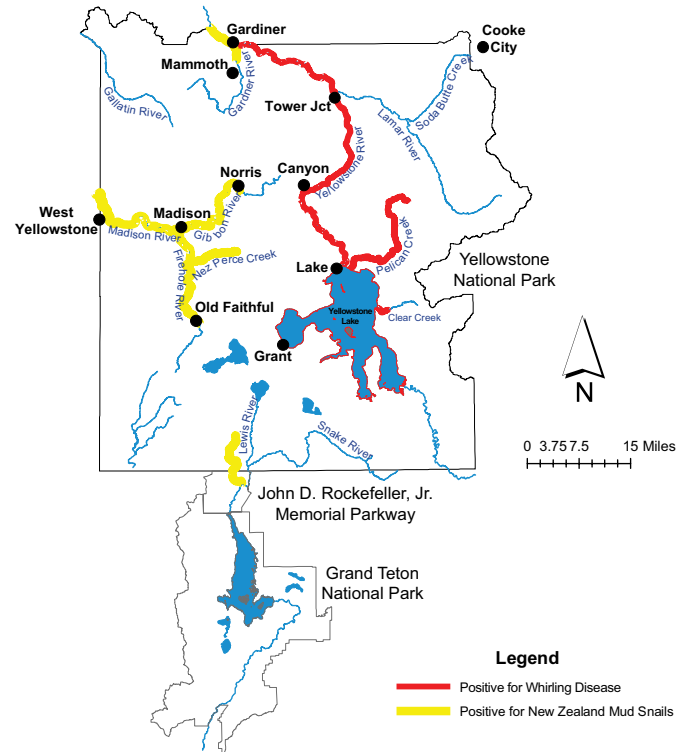


## HOW YOU CAN HELP

# It is **ILLEGAL** to transport water, fish, or other aquatic animals into park rivers or lakes.



Clean your boat and your gear.



Locations in Yellowstone and Grand Teton National Parks known to already have whirling disease and New Zealand mud snails.

## Follow these steps every time you come in contact with any body of water

- 1 Remove all** visible mud, plants, fish, and any tiny animals from your boats, trailers, and other equipment, including waders, boots, clothing, and nets.
- 2 Do not dump any water** from another source into Greater Yellowstone Area waters. Drain your boat hull and live well in a safe location (a flat paved, dirt, or gravel area) **away** from any park surface water.
- 3 Never empty bait** or release fish, other animals, or plants into a body of water unless they came out of it.
- 4 Clean and dry everything** that comes in contact with water before entering a new body of water. It is best to use high-pressure, hot water (available at car washes outside the park) to clean your boat, trailer, and gear.

If you find a nuisance species, need help or have questions, **contact a park ranger immediately.**