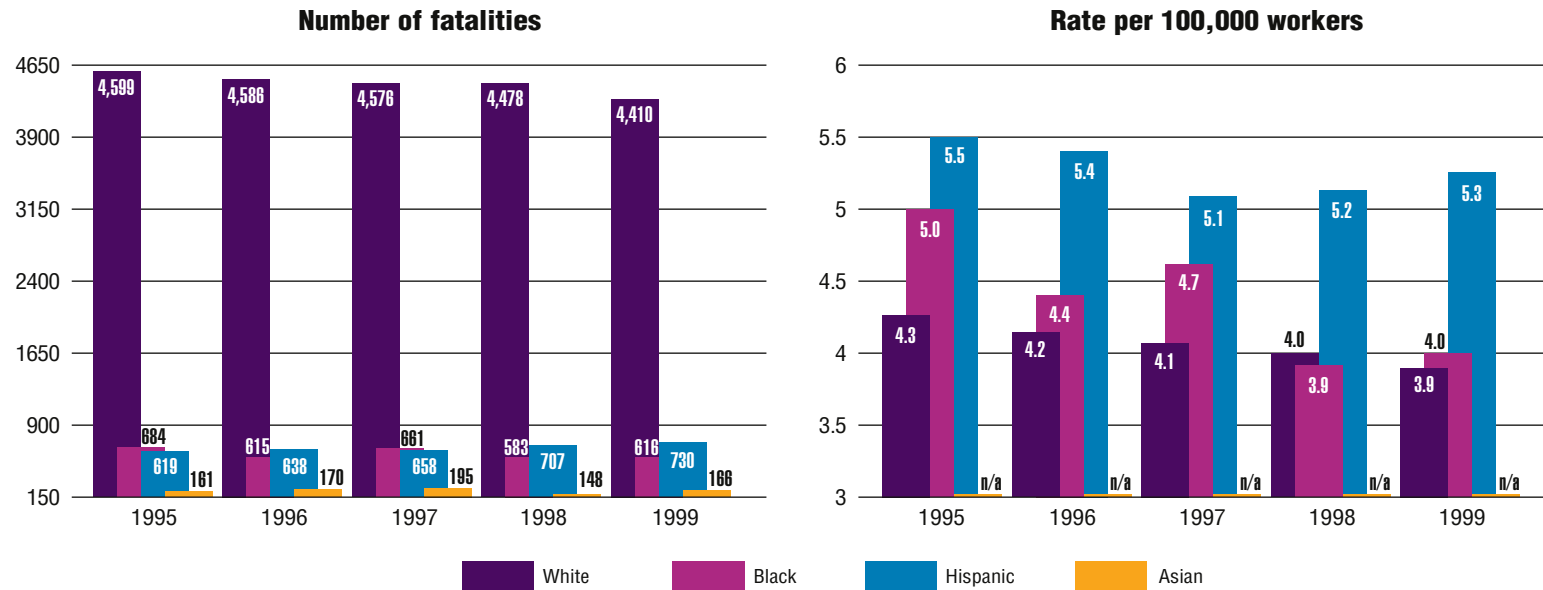


	WHITE	BLACK	HISPANIC	ASIAN	MEN	WOMEN
Number of fatalities, 1995–99:	22,649	3,159	3,352	840	28,366	2,458
Average fatalities per year:	4,530	632	670	168	5,673	492
Five-year average fatality rate:	4.1	4.4	5.3	n/a	8.1	0.8

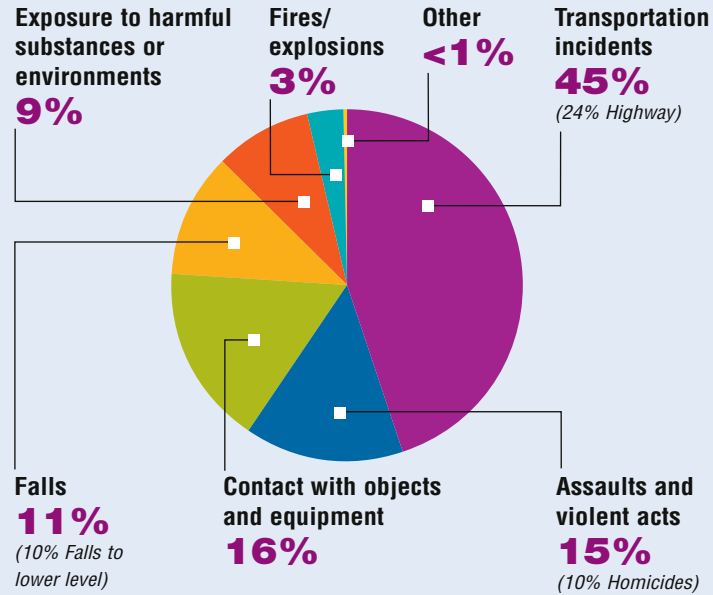


Race and Gender

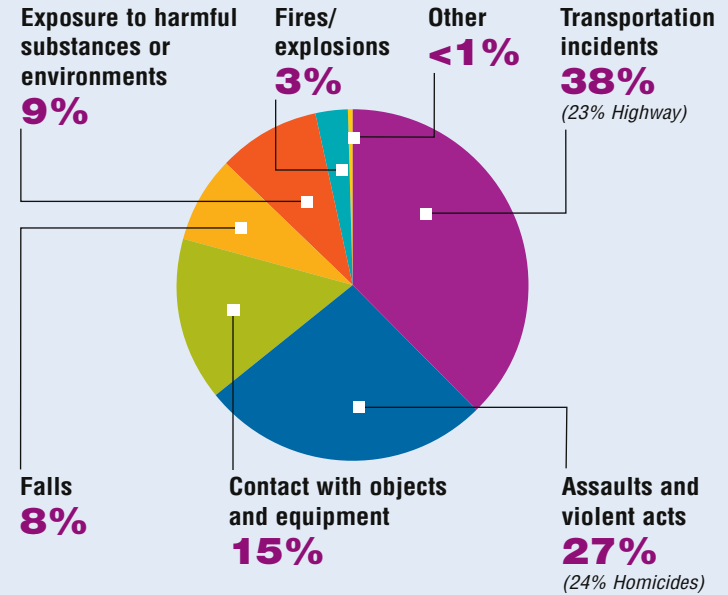
WORK-RELATED FATALITY NUMBERS AND RATES



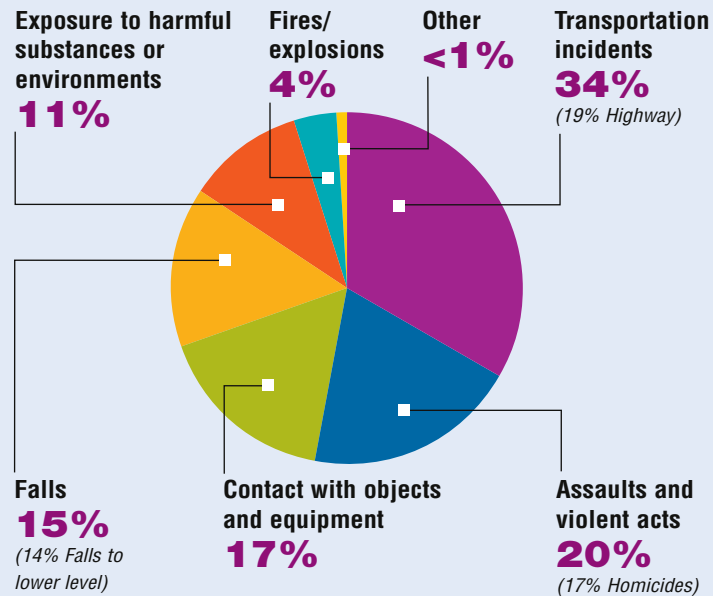
WORK-RELATED FATALITIES BY EVENT—WHITE



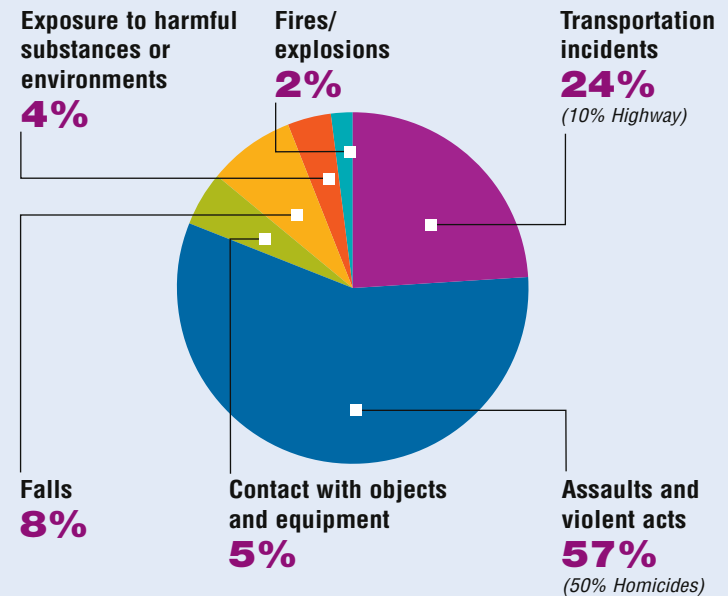
WORK-RELATED FATALITIES BY EVENT—BLACK



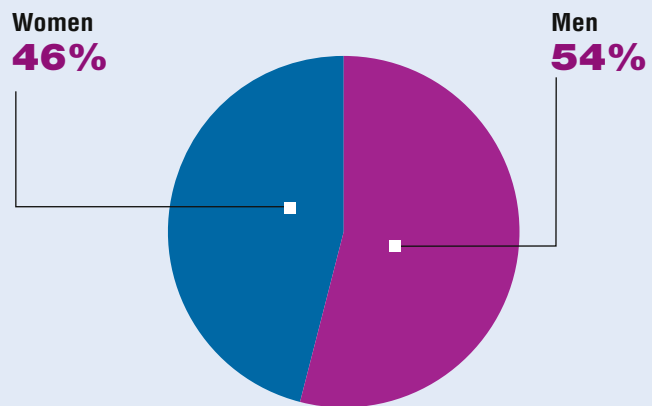
WORK-RELATED FATALITIES BY EVENT—HISPANIC



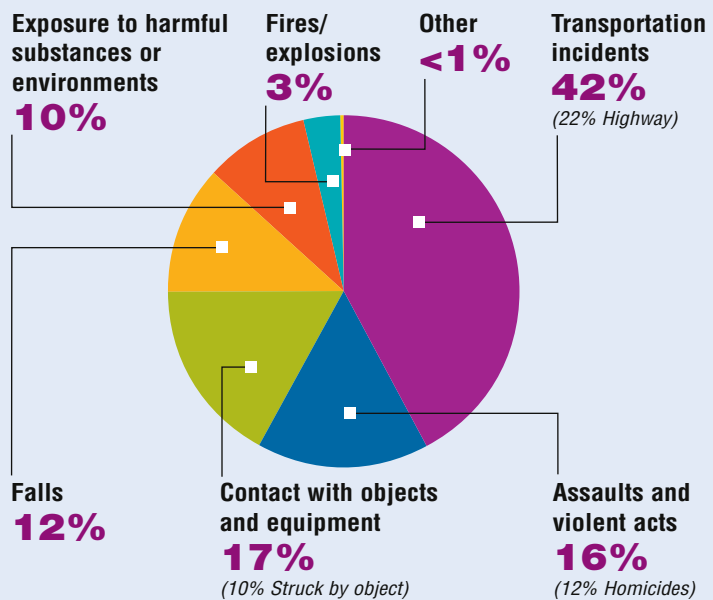
WORK-RELATED FATALITIES BY EVENT—ASIAN



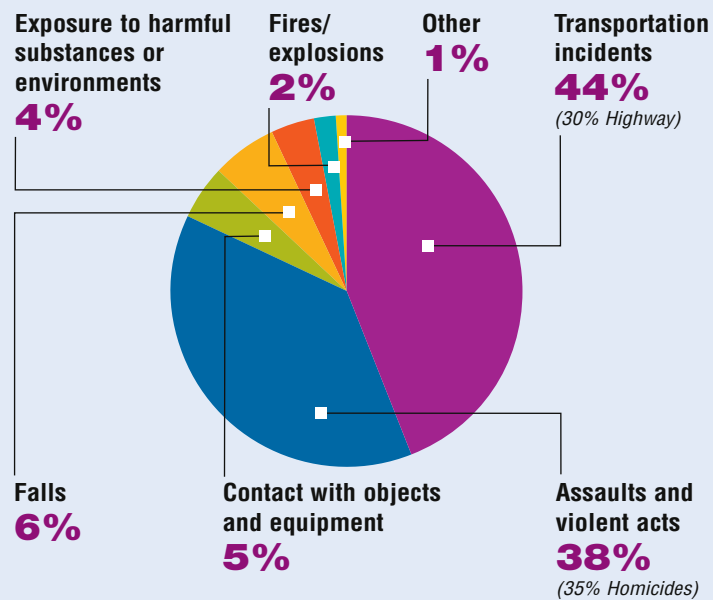
EMPLOYMENT SHARE BY GENDER



WORK-RELATED FATALITIES BY EVENT—MEN



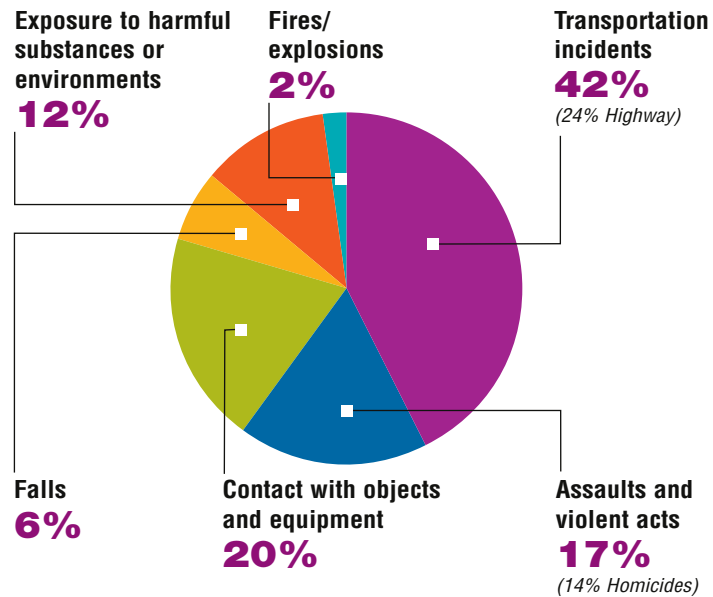
WORK-RELATED FATALITIES BY EVENT—WOMEN



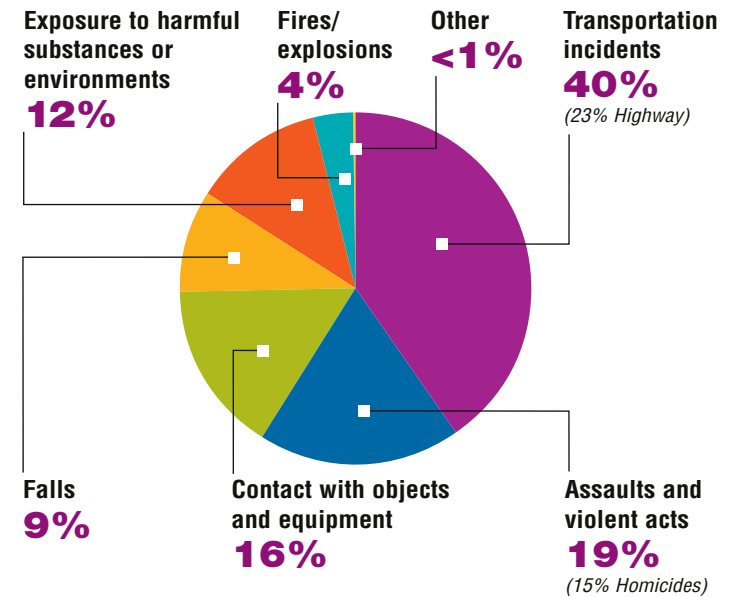
	Under 20	20 to 34	35 to 54	55 and over	WAGE/SALARY	SELF-EMPLOYED
Number of fatalities, 1995–99:	964	8,814	14,128	6,854	24,729	6,095
Average fatalities per year:	193	1,763	2,826	1,371	4,946	1,219
Five-year average fatality rate:	2.5*	3.9	4.5	8.5	4.1	11.4

Age

WORK-RELATED FATALITIES BY EVENT—WORKERS UNDER AGE 20

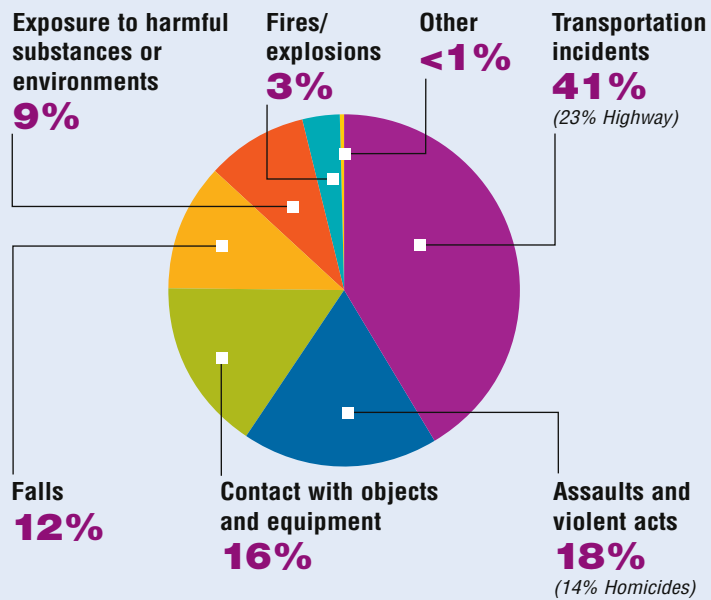


WORK-RELATED FATALITIES BY EVENT—WORKERS AGED 20 TO 34



*Fatality rate is for workers 16 to 19 years of age.

**WORK-RELATED FATALITIES
BY EVENT—WORKERS
AGED 35 TO 54**



**WORK-RELATED FATALITIES
BY EVENT—WORKERS AGED 55
AND OLDER**

