

APPENDIX A

Gifford Pinchot National Forest
Columbia River Gorge National Scenic Area
Invasive Plant Treatment FEIS
Site Specific Data Tables and Maps Depicting
Treatment Areas, Target Species,
Priority and Treatment Methods



Scotch Broom in Bloom

Appendix A presents data tables that display information about each treatment area, including the District on which the infestation has been found, the site description, treatment priority, the estimated treatment acreage, and the herbicide and non-herbicide methods for the Preferred Alternative. Methods would be verified through the implementation planning process prior to treatment, and Project Design Criteria would be applied. The implementation planning process may result in substantial refinements to the information in these data tables). This table has been updated since the DEIS in response to public comment. Species identifiers (scientific notation) and information about restoration prescription options has been added.

Two “Shaded tables” depicts the distribution of invasive target species known within treatment areas.

The last table lists roads within treatment areas that are identified as having a high potential for herbicide delivery to streams.

The treatment areas are shown on maps at the end of the appendix. Larger scale maps are available electronically on our website or hard copy on request.

The maps include one 11 x 17 fold out map of the Columbia River Gorge National Scenic Area (CRGNSA) showing insets of each treatment area.

The maps of the Gifford Pinchot National Forest are depicted in eleven sections. Two maps are provided for each section; one showing the treatment area types and the other depicting roadside treatment areas that are identified as having a high potential for herbicide delivery to streams. The treatment area data tables display the associated map section of the Gifford Pinchot.

Columbia River Gorge NSA Treatment Areas

Columbia River Gorge NSA								
Treatment Area ID	Description	Priority	Primary Target Species ¹	Estimated Treatment Acres	Preliminary Treatment Methods			
					Herbicide	Manual Methods	Mechanical/Cultural Methods	Restoration
22-02	Clearing	3	RUDI2, CYSC4, CIAR4, TAVU	51	Spot and Hand	Hand Pulling	Brush and Mow	Passive
22-03	Clearing	3	RUDI2, CYSC4, CIAR4, CEDI3, AMFR	55	Spot and Hand	Hand Pulling	Brush and Mow Goat Grazing	Passive
22-04	Wetland	1	RUDI2, PHAR3	4	Spot	Hand Pulling	Mow	Planting, Seeding, Mulching
22-06	Forest	1	RUDI2, CYSC4, POCU6	13	Spot and Hand	Hand Pulling	Mow Goat Grazing	Planting, Seeding, Mulching
22-09	Forest	1	CESO3, CEDI3, RUDI2	21	Spot	Hand Pulling	--	Passive and Active

¹ A key showing the full scientific names and common names for these species is given at the end of this section. This key includes species that are not currently inventoried, but have the potential to be treated under EDRR if they are discovered in the future.

Columbia River Gorge NSA

Treatment Area ID	Description Priority	Priority	Primary Target Species ¹	Estimated Treatment Acres	Preliminary Treatment Methods			
					Herbicide	Manual Methods	Mechanical/Cultural Methods	Restoration
22-10	Forest	1	CESO3, RUDI2, CEDI3, CIAR4	67	Broadcast and Spot	Hand Pulling	Mow	Planting, Seeding, Mulching
22-13	Forest	4	CESO3, CEDI3	100	Spot	Hand Pulling	--	Passive
22-14	Forest	5	CESO3	19	Spot	Hand Pulling	--	Passive
22-15	Clearing	4	RUDI2	2	Spot	Hand Pulling	Mow	Passive
22-16	Clearing	1	CESO3, RUDI2, CEDI3, CELO3, TRTE	27	Spot	Hand Pulling	--	Passive

Gifford Pinchot National Forest									
Treatment Area ID	Admin. Unit ²	Description	Priority	Primary Target Species	Estimated Treatment Acres	Preliminary Treatment Methods			
						Herbicide Application Methods	Manual Methods	Mechanical Methods	Restoration
31-01a	Mt. Adams/ Mount St. Helens	Roadside	3	CYSC4, CIVU, CIAR4, CEDE5, SEJA, PHAR3, HYRA3, HYPE, CEBI2, LEVU	114	Broadcast, Spot and Hand	Hand Pulling, Grubbing, and Clip and Pull	Mow	Active and Passive
31-01q	Mount St. Helens	Quarry	1	CEBI2, CEDE5, CIAR4, CYSC4, PHAR3, CIVU, HYPE, HYRA3, SEJA	2	Broadcast, Spot and Hand	Hand Pulling, Grubbing, and Clip and Pull	--	Passive
31-01r2	Mount St. Helens/ Mt. Adams	Dispersed Campsites	2	CIAR4, SEJA, CYSC4, PHAR3	3	Broadcast, Spot and Hand	Grubbing, Hand Pulling, and Clip and Pull	Mow	Mulching, seeding, planting
31-08q	Mount St. Helens	Quarry	3	CEBI2, CEDE5, CYSC4, HYPE, HYRA3, LEVU, SEJA	> 1	Broadcast, Spot and Hand	Hand Pulling, Grubbing, and Clip and Pull	--	Passive
31-08qa	Mount St. Helens	Quarry	1	CEBI2, CEDE5, HYPE, HYRA3, LEVU, SEJA	> 1	Broadcast and Spot	Hand Pulling and Clip and Pull	--	Passive

² *Note: Because of the nature of the treatment areas and how they were originally constructed, some treatment areas fall into more than one administrative unit.

Gifford Pinchot National Forest

Treatment Area ID	Admin. Unit ²	Description	Priority	Primary Target Species	Estimated Treatment Acres	Preliminary Treatment Methods			
						Herbicide Application Methods	Manual Methods	Mechanical Methods	Restoration
31-08r2	Mount St. Helens	Dispersed Campsites	2	SEJA, LEVU, HYRA3, HYPE	> 1	Broadcast, Spot and Hand	Hand Pulling and Clip and Pull	--	Passive
31-08r3	Mount St. Helens	Parking	2	SEJA, LEVU, HYRA3, HYPE	2	Broadcast and Spot	Hand Pulling and Clip and Pull	--	Passive
31-09q	Mount St. Helens	Quarry	3	CEBI2, CEDE5, PHAR3, SEJA	1	Broadcast and Spot	Hand Pulling and Clip and Pull	--	Passive
31-09qa	Mount St. Helens	Quarry	1	CEBI2, CYSC4, HYPE, HYRA3, LEVU, SEJA	> 1	Broadcast, Spot and Hand	Hand Pulling, Grubbing, and Clip and Pull	--	Passive
31-09r2	Mount St. Helens	Dispersed Campsites	2	SEJA	> 1	Spot and Hand	Hand Pulling and Clip and Pull	--	Passive
31-10q	Cowlitz Valley/ Mount St. Helens	Quarry	3	CIAR4, CIVU, CYSC4, HYRA3, LEVU, SEJA	> 1	Broadcast and Spot	Hand Pulling, Grubbing, and Clip and Pull	--	Passive

Gifford Pinchot National Forest

Treatment Area ID	Admin. Unit ²	Description	Priority	Primary Target Species	Estimated Treatment Acres	Preliminary Treatment Methods			
						Herbicide Application Methods	Manual Methods	Mechanical Methods	Restoration
31-10qa	Cowlitz Valley	Quarry	1	CIVU, SEJA	>1	Broadcast and Spot	Hand Pulling and Clip and Pull	--	Passive
31-10r1	Mount St. Helens	Campground	1	CEBI2, CEDE5, CEDI3, LEVU, LOCO6, SEJA, CYSC4	1	Broadcast, Spot and Hand	Hand Pulling, Clip and Pull, and Grubbing	--	Mulching, seeding, planting
31-10r3	Cowlitz Valley	Parking	1	CEBI2, CEDE5, CEDI3, LEVU, LOCO6, SEJA	< 1	Broadcast, Spot and Hand	Hand Pulling and Clip and Pull	--	Passive
31-10r4	Cowlitz Valley/ Mount St. Helens	Viewpoint	1	CEBI2, CEDE5, CEDI3, LEVU, LOCO6, SEJA	4	Broadcast, Spot and Hand	Hand Pulling and Clip and Pull	--	Mulching, seeding, planting
31-19q	Mount St. Helens	Quarry	3	CEBI2, CEDE5, CIAR4, CYSC4, HYPE, HYRA3, SEJA	> 1	Broadcast, Spot and Hand	Hand Pulling, Grubbing, and Clip and Pull	--	Passive
31-19qa	Mount St. Helens	Quarry	1	CEDE5, CIAR4, HYPE, LEVU, SEJA	>1	Broadcast and Spot	Hand Pulling and Clip and Pull	--	Passive

Gifford Pinchot National Forest

Treatment Area ID	Admin. Unit ²	Description	Priority	Primary Target Species	Estimated Treatment Acres	Preliminary Treatment Methods			
						Herbicide Application Methods	Manual Methods	Mechanical Methods	Restoration
31-19r2	Mount St. Helens	Dispersed Campsites	2	SEJA	> 1	Broadcast and Spot	Hand Pulling and Clip and Pull	--	Passive
33-03qa	Mt. Adams	Quarry	1	CEBI2, CEDE5, CEDI3, CIAR4, CYSC4, PHAR3, CIVU, HYPE, SEJA	>1	Broadcast, Spot and Hand	Hand Pulling, Grubbing, and Clip and Pull	--	Passive
33-03r0	Mt. Adams	Administrative Site	1	SEJA, CIAR4	4	Spot and Hand	Hand Pulling and Clip and Pull	--	Planting, Seeding, Mulching
33-03r1	Mt. Adams	Campground	3	CEDI3, SEJA, CYSC4	2	Broadcast, Spot and Hand	Hand Pulling, Clip and Pull, and Grubbing	--	Planting, Seeding, Mulching
33-03r2	Mt. Adams	Dispersed Campsites	1	CEDE5, CYSC4, SEJA, CIAR4	< 1	Spot and Hand	Hand Pulling, Clip and Pull, and Grubbing	--	Passive
33-03r3	Mt. Adams/ Mount St. Helens	Parking	2	CEDI3, CEBI2, CEDE5, SEJA, CYSC4, CIAR4, CIVU, HYPE	1	Broadcast, Spot and Hand	Hand Pulling, Grubbing, and Clip and Pull	--	Passive

Gifford Pinchot National Forest

Treatment Area ID	Admin. Unit ²	Description	Priority	Primary Target Species	Estimated Treatment Acres	Preliminary Treatment Methods			
						Herbicide Application Methods	Manual Methods	Mechanical Methods	Restoration
33-04	Mt. Adams/ Mount St. Helens	Roadside	3	LINAR, CIVU, SEJA, CENTA, CYSC4, CYOF, CEDI3, CIAR4, HYPE, HYRA3	261	Broadcast, Spot and Hand	Hand Pulling, Grubbing, and Clip and Pull	--	Passive
33-04m1	Mt. Adams	Meadow	1	CENTA, SEJA, CYOF, CIAR4, CIVU, HYPE	3	Spot and Hand	Hand Pulling and Clip and Pull	--	Passive and Active
33-04p1	Mt. Adams	Plantation	1	CEBI2, CIAR4, CIVU, HYPE, SEJA	15	Spot and Hand	Hand Pulling and Clip and Pull	--	Passive
33-04q	Mt. Adams	Quarry	3	CEBI2, CEDE5, CEDI3, CYSC4, CIVU, HYPE, SEJA	>1	Broadcast, Spot and Hand	Hand Pulling, Grubbing, and Clip and Pull	--	Passive
33-04r1	Mt. Adams	Campground	1	SEJA, CEBI2, CYSC4	3	Spot and Hand	Hand Pulling, Clip and Pull, and Grubbing	--	Planting, Seeding, Mulching
33-04r3	Mt. Adams	Parking	1	SEJA, CEDI3, HYPE, CIVU	3	Broadcast, Spot and Hand	Hand Pulling and Clip and Pull	--	Passive

Gifford Pinchot National Forest

Treatment Area ID	Admin. Unit ²	Description	Priority	Primary Target Species	Estimated Treatment Acres	Preliminary Treatment Methods			
						Herbicide Application Methods	Manual Methods	Mechanical Methods	Restoration
33-04r4	Mt. Adams	Viewpoint	1	CEBI2, CEDI3, CIVU, HYPE, HYRA3	>1	Broadcast and Spot	Hand Pulling and Clip and Pull	--	Passive
33-05	Mt. Adams/ Mount St. Helens	Roadside	1	SEJA, CIVU, CIAR4, HYPE, CEDI3, CEBI2, CEDE5, CYSC4, HYRA3, CENTA, CYOF	478	Broadcast, Spot and Hand	Hand Pulling, Grubbing, and Clip and Pull	--	Passive and Active
33-05a	Mt. Adams/ Mount St. Helens	Roadside	1	SEJA, CIVU, CIAR4, HYPE, CEDI3, CEBI2, CEDE5, CYSC4, HYRA3, CYOF, LEVU	119	Broadcast, Spot and Hand	Hand Pulling, Grubbing, and Clip and Pull	--	Passive and Active
33-05m1	Mt. Adams	Meadow	1	CIAR4, SEJA, CYOF	7	Spot and Hand	Hand Pulling, Clip and Pull	--	Passive and Active
33-05m3	Mt. Adams	Meadow	1	CIAR4, SEJA, CIVU	12	Spot and Hand	Hand Pulling, Clip and Pull	--	Passive and Active
33-05m4	Mt. Adams	Meadow	1	CIAR4, SEJA, CEBI2, CIVU, LEVU, HYPE, HYRA3	2.5	Spot and Hand	Hand Pulling and Grubbing	--	Passive and Active

Gifford Pinchot National Forest

Treatment Area ID	Admin. Unit ²	Description	Priority	Primary Target Species	Estimated Treatment Acres	Preliminary Treatment Methods			
						Herbicide Application Methods	Manual Methods	Mechanical Methods	Restoration
33-05p1	Mt. Adams	Plantation	1	CIAR4, CIVU, HYPE, HYRA3, SEJA	> 1	Spot and Hand	Hand Pulling and Clip and Pull	--	Passive
33-05p2	Mt. Adams	Plantation	1	SEJA, CIAR4, CEBI2, HYPE	33	Broadcast Spot and Hand	Hand Pulling, Grubbing, and Clip and Pull	--	Passive
33-05q	Mt. Adams	Quarry	3	CEBI2, CEDI3, CEDE5, CIAR4, CYSC4, CIVU, HYPE, HYRA3, SEJA	>1	Broadcast, Spot and Hand	Hand Pulling, Grubbing, and Clip and Pull	--	Passive
33-05qa	Mt. Adams	Quarry	1	POCU6, CEDI3, CEBI2, CIAR4, CYSC4, CIVU, HYPE, HYRA3, SEJA	>1	Broadcast, Spot and Hand	Hand Pulling, Grubbing, and Clip and Pull	--	Passive
33-05r0	Mt. Adams	Administrative Site	2	CIAR4, CIVU, HYPE, SEJA	1	Broadcast, Spot and Hand	Hand Pulling and Clip and Pull	--	Planting, Seeding, Mulching
33-05r1	Mt. Adams	Campground	2	CIAR4, CIVU, HYPE, SEJA	25	Spot and Hand	Hand Pulling and Clip and Pull	--	Planting, Seeding, Mulching

Gifford Pinchot National Forest

Treatment Area ID	Admin. Unit ²	Description	Priority	Primary Target Species	Estimated Treatment Acres	Preliminary Treatment Methods			
						Herbicide Application Methods	Manual Methods	Mechanical Methods	Restoration
33-05r2	Mt. Adams	Dispersed Campsites	2	SEJA, CYSC4, CIAR4	< 1	Spot and Hand	Hand Pulling, Clip and Pull, and Grubbing	--	Passive
33-05r3	Mt. Adams	Parking	2	CIAR4, CIVU, HYPE, SEJA	4	Spot and Hand	Hand Pulling and Clip and Pull	--	Passive
33-05r4	Mt. Adams	Viewpoint	3	CIAR4, CIVU, HYPE, SEJA	>1	Broadcast and Spot	Hand Pulling	--	Passive
33-06q	Mt. Adams	Quarry	3	CEBI2, CEDE5, CIAR4, CYSC4, CIVU, HYPE, SEJA	>1	Broadcast, Spot and Hand	Hand Pulling, Grubbing, and Clip and Pull	--	Passive
33-06qa	Mt. Adams	Quarry	1	CEBI2, CYSC4, SEJA	>1	Broadcast, Spot and Hand	Hand Pulling, Grubbing, and Clip and Pull	--	Passive
33-06r1	Mt. Adams	Campground	3	CIAR4, CIVU, SEJA	3	Spot and Hand	Hand Pulling and Clip and Pull	--	Planting, Seeding, Mulching

Gifford Pinchot National Forest

Treatment Area ID	Admin. Unit ²	Description	Priority	Primary Target Species	Estimated Treatment Acres	Preliminary Treatment Methods			
						Herbicide Application Methods	Manual Methods	Mechanical Methods	Restoration
33-06r2	Mt. Adams	Dispersed Campsites	2	CIAR4, CIVU, SEJA	< 1	Spot and Hand	Hand Pulling and Clip and Pull	--	Passive
33-06r3	Mt. Adams/ Mount St. Helens	Parking	2	CIAR4, CIVU, SEJA	1	Broadcast and Spot	Hand Pulling	--	Passive
33-07m	Cowlitz Valley/ Mount St. Helens	Meadow	1	CEBI2, CEDE5, CIAR4, CYSC4, LEVU, HYPE, HYRA3, SEJA	28	Spot and Hand	Hand Pulling, Clip and Pull, and Grubbing	--	Passive and Active
33-07q	Mount St. Helens	Quarry	2	CEBI2, CEDE5, CIAR4, PHAR3, HYPE, HYRA3, LEVU, SEJA	>1	Broadcast and Spot	Hand Pulling, and Clip and Pull	--	Passive
33-07r0	Mount St. Helens	Administrative Site	1	CIAR4, CYSC4, LEVU, SEJA, HYRA3, HYPE	3	Broadcast, Spot and Hand	Hand Pulling, Grubbing, and Clip and Pull	--	Planting, Seeding, Mulching
33-07r2	Mount St. Helens	Dispersed Campsites	1	CIAR4, CYSC4, LEVU, SEJA, HYRA3, HYPE	< 1	Spot and Hand	Hand Pulling, Clip and Pull, and Grubbing	--	Passive

Gifford Pinchot National Forest

Treatment Area ID	Admin. Unit ²	Description	Priority	Primary Target Species	Estimated Treatment Acres	Preliminary Treatment Methods			
						Herbicide Application Methods	Manual Methods	Mechanical Methods	Restoration
33-07r3	Mount St. Helens	Parking	1	CIAR4, CYSC4, LEVU, SEJA, HYRA3, HYPE	5	Broadcast, Spot and Hand	Hand Pulling, Grubbing, and Clip and Pull	--	Passive
33-07r4	Mount St. Helens	Viewpoint	1	CIAR4, CYSC4, LEVU, SEJA, HYRA3, HYPE	14	Broadcast, Spot and Hand	Hand Pulling, Grubbing, and Clip and Pull	--	Passive
33-11	Cowlitz Valley/ Mt. Adams/ Mount St. Helens	Roadside	1	CIVU, HYRA3, SEJA, CIAR4, HYPE, LEVU, CYSC4, SOAR2, HIPR	156	Broadcast, Spot and Hand	Hand Pulling, Grubbing, and Clip and Pull	--	Passive and Active
33-11a	Cowlitz Valley/ Mount St. Helens	Roadside	1	CIVU, HYRA3, SEJA, CIAR4, HYPE, TAVU, CYSC4, SOAR2, HIPR, CEBI2, CEDI3	47	Broadcast, Spot and Hand	Hand Pulling, Grubbing, and Clip and Pull	--	Passive and Active
33-11m1	Cowlitz Valley/ Mt. Adams	Meadow	1	CIAR4, CIVU, CYSC4, HYPE, HYRA3, LEVU, SEJA	< 1	Spot and Hand	Hand Pulling, Clip and Pull, and Grubbing	--	Passive and Active

Gifford Pinchot National Forest

Treatment Area ID	Admin. Unit ²	Description	Priority	Primary Target Species	Estimated Treatment Acres	Preliminary Treatment Methods			
						Herbicide Application Methods	Manual Methods	Mechanical Methods	Restoration
33-11q	Cowlitz Valley/ Mt. Adams/ Mount St. Helens	Quarry	3	CEDI3, CEBI2, CEDE5, CIAR4, CIVU, CYSC4, HYPE, HYRA3, LEVU, SEJA	>1	Broadcast and Spot	Hand Pulling, Grubbing, and Clip and Pull	--	Passive
33-11qa	Mount St. Helens	Quarry	1	CIVU, CIAR4, HYPE, HYRA3, LEVU, SEJA	>1	Broadcast and Spot	Hand Pulling and Clip and Pull	--	Passive
33-11r1	Cowlitz Valley/ Mount St. Helens	Campground	1	CEDI3, CIAR4, HYPE, HYRA3, LEVU, SEJA	11	Broadcast, Spot and Hand	Hand Pulling, Clip and Pull, and Grubbing	--	Planting, Seeding, Mulching
33-11r2	Mount St. Helens	Dispersed Campsites	1	CEDI3, CEBI2, SEJA, CIAR4	< 1	Spot and Hand	Hand Pulling and Clip and Pull	--	Passive
33-11r3	Cowlitz Valley/ Mt. Adams/ Mount St. Helens	Parking	1	CEDE5, CIAR4, CIVU, HYPE, LEVU	3	Broadcast, Spot and Hand	Hand Pulling and Clip and Pull	--	Passive

Gifford Pinchot National Forest

Treatment Area ID	Admin. Unit ²	Description	Priority	Primary Target Species	Estimated Treatment Acres	Preliminary Treatment Methods			
						Herbicide Application Methods	Manual Methods	Mechanical Methods	Restoration
33-12a	Cowlitz Valley/ Mt. Adams/ Mount St. Helens	Roadside	3	SEJA, CIAR4, CIVU, CYSC4, CEDE5, CEBI2, LALA4, HYPE, BUDDL2, CEDI3	203	Broadcast, Spot and Hand	Hand Pulling, Grubbing, and Clip and Pull	--	Passive and Active
33-12q	Mount St. Helens	Quarry	3	CEBI2, CEDE5, CEDI3, CIAR4, CYSC4, CIVU, HYRA3, LEVU, SEJA	3	Broadcast, Spot and Hand	Hand Pulling, Grubbing, and Clip and Pull	--	Passive
33-12qa	Mount St. Helens	Quarry	1	CEBI2, CEDI3, CIAR4, CYSC4, CIVU, LEVU, SEJA	>1	Broadcast, Spot and Hand	Hand Pulling, Grubbing, and Clip and Pull	--	Passive
33-12r1	Mt. Adams/ Mount St. Helens	Campground	1	CIAR4, CIVU, SEJA	23	Spot and Hand	Hand Pulling, Clip and Pull	--	Planting, Seeding, Mulching
33-12r2	Mt. Adams/ Mount St. Helens	Dispersed Campsites	2	CIAR4, CIVU, SEJA, CYSC4	< 1	Spot and Hand	Hand Pulling, Clip and Pull, and Grubbing	--	Passive

Gifford Pinchot National Forest

Treatment Area ID	Admin. Unit ²	Description	Priority	Primary Target Species	Estimated Treatment Acres	Preliminary Treatment Methods			
						Herbicide Application Methods	Manual Methods	Mechanical Methods	Restoration
33-12r3	Mt. Adams/ Mount St. Helens	Parking	2	CIAR4, CIVU, SEJA	2	Broadcast, Spot and Hand	--	--	Passive
33-12r4	Mt. Adams/ Mount St. Helens	Viewpoint	1	CIAR4, CIVU, SEJA	1	Broadcast and Hand	Hand Pulling	--	Passive
35-13q	Cowlitz Valley	Quarry	3	CIAR4, CIVU, CYSC4, SEJA	2	Broadcast, Spot and Hand	Hand Pulling, Grubbing, and Clip and Pull	--	Passive
35-14	Cowlitz Valley	Roadside	1	CIVU, CIAR4, CEJA, LIVU2, SEJA, CYSC4, HYRA3, HIPR, CYES3, CEDE5, LYSAV	213	Broadcast, Spot and Hand	Hand Pulling, Grubbing, and Clip and Pull	--	Passive and Active
35-14a	Cowlitz Valley	Roadside	1	CIVU, CIAR4, HYPE, LEVU, SEJA, CYSC4, HYRA3, POCU6, CEJA, CEBI2, CEDI3	137	Broadcast, Spot and Hand	Hand Pulling, Grubbing, and Clip and Pull	--	Passive and Active
35-14m	Cowlitz Valley	Meadow	1	CYSC4, SEJA, CEBI2, CEJA, CIAR4, CIVU, HYPE, HYRA3, LEVU	44	Spot and Hand	Hand Pulling, Clip and Pull, and Grubbing	--	Passive and Active

Gifford Pinchot National Forest

Treatment Area ID	Admin. Unit ²	Description	Priority	Primary Target Species	Estimated Treatment Acres	Preliminary Treatment Methods			
						Herbicide Application Methods	Manual Methods	Mechanical Methods	Restoration
35-14m1	Cowlitz Valley	Meadow	1	CYSC4, HYPE, HYRA3, LEVU, SEJA	3	Spot and Hand	Hand Pulling, Clip and Pull, and Grubbing	--	Passive and Active
35-14m2	Cowlitz Valley	Meadow	1	HIPR, LIVU2, CIAR4, CIVU, HYPE, HYRA3	4	Spot and Hand	Hand Pulling and Clip and Pull	--	Passive and Active
35-14m3	Cowlitz Valley	Meadow	1	LEVU, CIVU, LYSAV, HYPE, HYRA3	< 1	Spot and Hand	Hand Pulling and Clip and Pull	--	Passive and Active
35-14p	Cowlitz Valley	Plantation	1	SEJA, CIAR4, POCU6	3	Broadcast, Spot and Hand	Hand Pulling and Grubbing	--	Passive
35-14q	Cowlitz Valley	Quarry	3	CEBI2, CEDI3, CEJA, CIAR4, CIVU, CYSC4, HIPR, HYPE, HYRA3, LEVU, SEJA	2	Broadcast, Spot and Hand	Hand Pulling, Grubbing, and Clip and Pull	--	Passive
35-14qa	Cowlitz Valley	Quarry	1	CIAR4, CIVU, SEJA, HYPE, LEVU, HIPR	>1	Broadcast and Spot	Hand Pulling, Grubbing, and Clip and Pull	--	Passive

Gifford Pinchot National Forest

Treatment Area ID	Admin. Unit ²	Description	Priority	Primary Target Species	Estimated Treatment Acres	Preliminary Treatment Methods			
						Herbicide Application Methods	Manual Methods	Mechanical Methods	Restoration
35-14r1	Cowlitz Valley	Campground	1	CEBI2, CIAR4, CIVU, CYSC4, HYRA3, SEJA, LYSAV	4	Broadcast, Spot and Hand	Hand Pulling, Clip and Pull, and Grubbing	--	Planting, Seeding, Mulching
35-14r3	Cowlitz Valley	Parking	1	CEBI2, CIAR4, CIVU, CYSC4, HYRA3, SEJA	6	Broadcast, Spot and Hand	Hand Pulling, Grubbing, and Clip and Pull	--	Passive
35-14r4	Cowlitz Valley	Viewpoint	2	CEBI2, CIAR4, CIVU, CYSC4, HYRA3, SEJA	>1	Broadcast, Spot and Hand	Hand Pulling, Grubbing, and Clip and Pull	--	Passive
35-16a	Cowlitz Valley/ Mount St. Helens	Roadside	1	CIVU, CIAR4, SEJA, CAAC, CYSC4, CEBI2, HYRA3, GERO, POCU6, LOCO6, SOAR2	195	Broadcast, Spot and Hand	Hand Pulling, Grubbing, and Clip and Pull	--	Passive and Active
35-16q	Cowlitz Valley	Quarry	3	CEBI2, CEDE5, CEDI3, CYSC4, CIAR4, CIVU, SEJA, HYPE, HYRA3, LEVU	4	Broadcast, Spot and Hand	Hand Pulling, Grubbing, and Clip and Pull	--	Passive
35-16qa	Cowlitz Valley	Quarry	1	CEBI2, CEDE5, CEDI3, CYSC4, CIAR4, CIVU, SEJA, HYPE, HYRA3, LEVU	>1	Broadcast, Spot and Hand	Hand Pulling, Grubbing, and Clip and Pull	--	Passive

Gifford Pinchot National Forest

Treatment Area ID	Admin. Unit ²	Description	Priority	Primary Target Species	Estimated Treatment Acres	Preliminary Treatment Methods			
						Herbicide Application Methods	Manual Methods	Mechanical Methods	Restoration
35-16r0	Cowlitz Valley	Administrative Site	1	ARMI2, CIAR4, CIVU, CYSC4, GERO, LEVU, RUDI2	4	Broadcast, Spot and Hand	Hand Pulling and Clip and Pull	--	Planting, Seeding, Mulching
35-16r1	Cowlitz Valley	Campground	1	ARMI2, CIAR4, CIVU, CYSC4, GERO, LEVU, RUDI2	11	Broadcast, Spot and Hand	Hand Pulling, Clip and Pull, and Grubbing	--	Planting, Seeding, Mulching
35-16r3	Cowlitz Valley	Parking	1	ARMI2, CIAR4, CIVU, CYSC4, GERO, LEVU, RUDI2	3	Broadcast, Spot and Hand	Hand Pulling, Grubbing and Clip and Pull	--	Passive
35-16r4	Cowlitz Valley	Viewpoint	1	ARMI2, CIAR4, CIVU, CYSC4, GERO, LEVU, RUDI2	1	Broadcast, Spot and Hand	Hand Pulling, Grubbing, and Clip and Pull	--	Passive
35-17q	Cowlitz Valley	Quarry	3	CEBI2, CIAR4, CIVU, CYSC4, SEJA	3	Broadcast, Spot and Hand	Hand Pulling, Grubbing, and Clip and Pull	--	Passive
35-17qa	Cowlitz Valley	Quarry	1	SEJA, CYSC4, CIVU	>1	Broadcast, Spot and Hand	Hand Pulling, Grubbing, and Clip and Pull	--	Passive

Gifford Pinchot National Forest

Treatment Area ID	Admin. Unit ²	Description	Priority	Primary Target Species	Estimated Treatment Acres	Preliminary Treatment Methods			
						Herbicide Application Methods	Manual Methods	Mechanical Methods	Restoration
35-17r1	Cowlitz Valley	Campground	2	CYSC4, CEBI2, SEJA, CIAR4, CIVU	1	Broadcast, Spot and Hand	Hand Pulling, Clip and Pull, and Grubbing	--	Planting, Seeding, Mulching
35-17r3	Cowlitz Valley	Parking	2	SEJA, CYSC4, CIAR4	> 1	Broadcast, Spot and Hand	Hand Pulling and Grubbing	--	Passive
35-18	Cowlitz Valley	Roadside	1	CYSC4, CIVU, SEJA, THVI, CAAC	73	Broadcast, Spot and Hand	Hand Pulling, Grubbing, and Clip and Pull	--	Passive and Active
35-18q	Cowlitz Valley	Quarry	3	CEBI2, CEDI3, CYSC4, CEJA, CIAR4, CIVU, SEJA, LEVU	1	Broadcast, Spot and Hand	Hand Pulling, Grubbing, and Clip and Pull	--	Passive
35-18qa	Cowlitz Valley	Quarry	1	CEBI2, CEDI3, CYSC4	>1	Broadcast, Spot and Hand	Hand Pulling, Grubbing, and Clip and Pull	--	Passive
35-18r1	Cowlitz Valley	Campground	1	POCU6, CEDE5, CEDI3	11	Broadcast, Spot and Hand	Grubbing	--	Planting, Seeding, Mulching

Gifford Pinchot National Forest

Treatment Area ID	Admin. Unit²	Description	Priority	Primary Target Species	Estimated Treatment Acres	Preliminary Treatment Methods			
						Herbicide Application Methods	Manual Methods	Mechanical Methods	Restoration
35-18r3	Cowlitz Valley	Parking	1	POCU6, CEDE5, CIAR4, CEBI2, CEDI3, SEJA	> 1	Broadcast, Spot and Hand	Hand Pulling, Grubbing, and Clip and Pull	--	Passive

**Road Segments Associated With High Potential To Deliver Herbicide
(by treatment area and fifth field watersheds)
Special PDC apply to these roads:
No use of picloram, Garlon IV (triclopyr) and no broadcast of any herbicide.**

Road Number	Treatment ID	Miles of Road	Fifth Field Watershed Number	Fifth Field Watershed Name		
2300000	33-11a	0.07	170701051001	Headwaters White Salmon River		
2300768	33-04	0.24				
8031101	33-04	2.32				
8860000	33-04	0.58				
2300000	33-04q	0.06	170701051002	Upper White Salmon River		
2380060	33-04	2.11				
2400000	33-05a	7.77	170701051004	Upper Trout Lake Creek		
8800000	33-05a	9.47				
8800754	33-04	0.54				
8800768	33-05	0.54				
8851000	33-05a	0.01				
8851000	33-05	0.02				
8854000	33-05a	3.77				
8854000	33-05	0.97				
8854054	33-05	0.33				
8854062	33-05	0.38				
8854080	33-05	1.08				
8860000	33-05a	0.02				
8860000	33-04	2.59				
2380060	33-04	1.15			170701051005	Lower Trout Lake Creek
2400000	33-05a	0.77				
8800000	33-05a	3.28				
8810000	33-05a	6.13				
2400000	33-05a	3.68	170701051006	Cave/Bear Creek		
6000000	33-05a	2.19				
6000000	33-05r0	0.07				
6600000	33-05a	0.37				
6610000	33-05	3.25				
6610729	33-05	0.35				
6610730	33-05	0.14				
8600000	33-05a	7.66				
8600707	33-05a	0.21				
8600708	33-05a	0.29				
8600709	33-05a	0.47				
8600711	33-05a	0.68				
8620000	33-05a	0.57				

Symbol	Common Name	Scientific Name
ACRE	Russian knapweed	<i>Acroptilon repens</i>
ALPE4	Garlic mustard	<i>Alliaria petiolata</i>
AMFR	False Indigo	<i>Amorpha fruticosa</i>
ARMI	Lesser Burdock	<i>Arctium minus</i>
BRSY	False broom	<i>Brachypodium sylvaticum</i>
BUsp	Butterfly Bush	<i>Buddlejaceae sp.</i>
CAAC	Spiny Plumeless Thistle	<i>Carduus acanthoides</i>
CADR	Whitetop	<i>Cardaria draba</i>
CANU4	Musk thistle	<i>Carduus nutans</i>
CEBI2	Spotted knapweed	<i>Centaurea biebersteinii</i>
CEDI3	Diffuse knapweed	<i>Centaurea diffusa</i>
CEDE5	Meadow knapweed	<i>Centaurea debeauxii</i>
CEJA	Brownray knapweed	<i>Centaurea jacea</i>
CELO	Mat Sandbur	<i>Cenchrus longispinus</i>
CES03	Yellow starthistle	<i>Centaurea solstitialis</i>
CEVI8	Squarrosa knapweed	<i>Centaurea virgata</i>
CHJU	Rush skeletonweed	<i>Chondrilla juncea</i>
CHLE	Oxeye Daisy	<i>Chrysanthemum leucanthemum</i>
CIAR4	Canada thistle	<i>Cirsium arvense</i>
CIMA2	Water hemlock	<i>Cicuta maculate</i>
CIVU	Bull thistle	<i>Cirsium vulgare</i>
CYES	Yellow Nutsedge	<i>Cyperus esculentus</i>
CYOF	Houndstongue	<i>Cynoglossum officinale</i>
CYSC4	Scotch broom	<i>Cytisus scoparius</i>
EUES	Leafy spurge	<i>Euphorbia esula</i>
GELU	Shining geranium	<i>Geranium lucidum</i>

Symbol	Common Name	Scientific Name
GERO	Herb Robert	<i>Geranium robertianum</i>
HEHE	English ivy	<i>Hedera helix</i>
HIAU	Orange hawkweed	<i>Hieracium aurantiacum</i>
HIPR	Meadow hawkweed	<i>Hieracium pratense</i>
HIVU	Common hawkweed	<i>Hieracium vulgatum</i>
HYPE	St. Johnswort	<i>Hypericum perforatum</i>
HYRA	Hairy Catsear	<i>Hypochaeris radicata</i>
IMGL	Policeman's helmet	<i>Impatiens glandulifera</i>
ISTI	Dyer's woad	<i>Isatis tinctoria</i>
LALA4	Perennial peavine	<i>Lathyrus latifolius</i>
LELA2	Perennial pepper weed	<i>Lepidium latifolium</i>
Llsp	Toadflax	<i>Linaria spp</i>
LIVU2	Butter and eggs	<i>Linaria vulgaris</i>
LOCO	Bird's-foot trefoil	<i>Lotus corniculatus</i>
LYSA2	Purple loosestrife	<i>Lythrum salicaria</i>
ONAC	Scotch thistle	<i>Onopordum acanthium</i>
PHAR3	Reed canarygrass	<i>Phalaris arundinacea</i>
POBO10	Bohemian knotweed	<i>Polygonum bohemicum</i>
POCU6	Japanese knotweed	<i>Polygonum cuspidatum</i>
POPO5	Himalayan knotweed	<i>Polygonum polystachyum</i>
POSA4	Giant knotweed	<i>Polygonum sachalinense</i>
RUDI2	Himalayan blackberry	<i>Rubus discolor</i>
RULA	Cutleaf blackberry	<i>Rubus laciniatus</i>
SAAE	Mediterranean sage	<i>Salvia aethiopsis</i>
SEJA	Tansy ragwort	<i>Senecio jacobaea</i>

Symbol	Common Name	Scientific Name
SOAR	Perennial sowthistle	<i>Sonchus arvensis</i>
TACA8	Medusahead rye	<i>Taeniatherum caput-medusae</i>
TAVU	Common tansy	<i>Tanacetum vulgare</i>
THVI	Aaron's rod	<i>Thermopsis villosa</i>
TRTE	Puncturevine	<i>Tribulus terrestris</i>

Road Number	Treatment ID	Miles of Road	Fifth Field Watershed Number	Fifth Field Watershed Name
8620000	33-05	4.85		
8620011	33-05	1.47		
8620031	33-05	2.06		
8620061	33-05	3.15		
8620727	33-05	0.11		
8631000	33-05	4.33		
8631011	33-05	2.73		
8631020	33-05	0.41		
6000000	33-05a	1.94	170701051101	Dry/Lost Creek-Little White Salmon River
6600000	33-05a	0.98		
6615000	33-05	0.64		
1831000	33-05	0.22	170701051102	Big Lava Bed Frontal
6000000	33-05a	5.39		
6600000	33-05a	2.15		
6600000	33-05a	11.94		
6600016	33-05a	1.05		
6600050	33-05a	0.25		
6605000	33-05a	3.97		
6605000	33-05	6.33		
6605041	33-05	0.51		
6605121	33-05	0.48		
6610000	33-05a	2.64		
6615000	33-05a	0.95		
6615000	33-05	0.51		
6800000	33-05a	4.96		
6800580	33-05a	2.23		
8620000	33-05	0.47		
1800000	33-05a	4.86	170701051103	Upper Little White Salmon River
1800151	33-05a	0.15		
1800151	33-05r1	0.83		
1800181	33-05a	0.21		
1800181	33-05	1.43		
1800201	33-05a	0.44		
1800201	33-05	0.85		
1800220	33-05	0.69		
1800230	33-05a	1.62		
1800230	33-05	0.31		
1800251	33-05a	3.58		
1800779	33-05	0.29		
1800782	33-05	0.33		
1840000	33-05a	2.98		
1840000	33-05	5.91		

Road Number	Treatment ID	Miles of Road	Fifth Field Watershed Number	Fifth Field Watershed Name
1840051	33-05	0.89		
1840059	33-05	0.33		
1840071	33-05	0.83		
1840080	33-05	0.91		
1840728	33-05	0.37		
6610000	33-05a	0.00		
6610000	33-05	0.02		
8600000	33-05a	8.34		
1800080	33-05a	0.98	170701051104	Middle Little White Salmon River
1800080	33-05	0.88		
1800086	33-05	0.26		
1800712	33-05a	0.20		
1831000	33-05a	1.45		
1831000	33-05	1.03		
1831031	33-05	2.34		
1831070	33-05	3.26		
1831708	33-05	0.12		
1831712	33-05	0.53		
6600000	33-05a	0.80		
6600050	33-05	2.62		
3054100	33-12r3	0.05	170701051201	Upper Wind River
3100000	33-12a	0.60		
6500000	33-12a	0.03		
3062000	33-06r3	0.06	170701051202	Falls Creek
6500000	33-06r1	0.04		
6500000	33-06r3	0.05		
3065000	33-03r0	0.19	170701051203	Dry Creek-Wind River
5401000	33-03r0	0.10		
3700000	31-01a	0.05	170701051205	Trout Creek
4200000	31-01a	0.61		
4300000	33-03r2	0.00		
5400000	33-03r2	0.01		
6000000	33-05a	2.49	170701051206	Panther Creek
6500030	33-05	3.45		
6800000	33-05a	2.07		
6800000	33-05a	4.05		
6800000	33-05a	2.84		
6800020	33-05a	3.71		
6801000	33-05a	1.19		

Road Number	Treatment ID	Miles of Road	Fifth Field Watershed Number	Fifth Field Watershed Name
6801000	33-05	6.74		
6801022	33-05a	0.90		
6801024	33-05	0.33		
6801026	33-05	1.42		
6801069	33-05	2.73		
6801071	33-05	0.39		
6801605	33-05	0.16		
6802000	33-05a	1.85		
6800000	33-05a	8.61	170701051207	Bear Creek
4100000	31-01a	0.03	170701051301	
4100000	31-01a	2.87	170800010801	Headwaters Washougal River
2300000	33-11a	5.50	170800020101	Lewis River Headwaters
2325042	33-11	0.59		
2334000	33-11	2.27		
9000000	33-11a	3.05		
9091000	33-11	3.88		
9091000	33-11a	0.07		
9091021	33-11	2.16		
2300000	33-11a	1.69	170800020102	Twin Falls Creek
2300500	33-11	1.37		
8800190	33-11	0.37		
8800200	33-11	1.69		
8800231	33-11	0.53		
8800251	33-11	0.78		
9000000	33-11a	3.35		
9091000	33-11	0.34		
9091021	33-11	0.66		
2300000	33-11a	0.79	170800020103	Swampy Creek
2300000	33-11a	1.99		
2300500	33-11a	0.98		
8800000	33-05a	0.29		
8800000	33-12a	4.34		
8800150	33-11	1.93		
8800150	33-12a	2.28		
8800157	33-11	0.32		
8800171	33-12a	0.01		
8800182	33-11	0.73		
8800190	33-11	1.12		
8800190	33-12a	1.96		

Road Number	Treatment ID	Miles of Road	Fifth Field Watershed Number	Fifth Field Watershed Name
8800194	33-11	0.28		
8800200	33-11	0.49		
8800200	33-12a	1.60		
8800231	33-11	1.03		
8800779	33-12a	0.01		
8800781	33-12a	0.01		
8800783	33-12a	0.01		
8854000	33-05	0.69		
8854062	33-05	0.66		
8860000	33-05a	0.01		
8871000	33-12a	0.01		
9000000	33-11a	0.24	170800020104	Pin Creek
3200000	33-12a	4.01	170800020105	Steamboat Creek
3200400	33-12a	0.01		
3200451	33-12a	0.01		
3200783	33-12a	0.01		
3200787	33-12a	0.01		
8800000	33-12a	1.61		
8800350	33-12a	0.01		
9000000	33-12a	6.15		
9000000	33-11a	0.04		
9075000	33-12a	0.02		
3200000	33-12a	4.48	170800020106	Tillicum Creek
3200301	33-12a	0.01		
3200321	33-12a	0.01		
3241000	33-12a	0.01		
9000000	33-12a	0.68	170800020107	Quartz Creek
9300000	33-12a	8.99		
9341000	33-12a	0.01		
9388000	33-12a	0.01		
9000000	33-12a	2.23	170800020108	Alec Creek
9000000	33-12a	0.66		
9300000	33-12a	3.29		
3200000	33-12a	0.20	170800020109	Cussed Hollow Creek
3200000	33-12a	3.27		
9000000	33-12a	5.20		
9300000	33-12r3	4.01		
9300000	33-12a	0.85		

Road Number	Treatment ID	Miles of Road	Fifth Field Watershed Number	Fifth Field Watershed Name
2400000	33-05a	0.65	170800020110	Big Creek
3000000	33-12a	2.21		
3200000	33-12a	1.43		
3200150	33-12a	0.01		
3220000	33-12a	0.01		
3230000	33-12a	0.01		
9000000	33-12a	0.41		
3000000	33-12a	4.22	170800020111	Rush Creek
3200000	33-12a	5.10		
3211000	33-12a	4.11		
3220000	33-12a	0.01		
6500000	33-12a	1.88		
9000000	33-12a	0.17		
3053030	33-06r3	0.03	170800020112	Curly Creek
3100000	33-12a	1.70		
6500000	33-12a	2.21		
9000000	33-12a	0.38		
3100000	33-12a	1.00	170800020113	Little Creek
3211000	33-12a	2.15		
9000000	33-12a	5.54		
9000340	33-12a	0.02		
9039000	33-12r3	0.05		
9300000	33-12a	1.73		
9900000	33-07r4	0.07	170800020201	Smith Creek
9900000	33-07r4	0.09		
2500000	33-12a	0.03	170800020202	Clearwater Creek
2500000	33-12a	7.55		
2500540	33-12a	0.02		
2556000	33-12a	0.02		
2560000	33-12a	0.00		
2562000	31-19q	0.03		
9900000	33-07r3	0.08		
9900000	33-07r4	0.21		
9900000	33-07m	0.17		
2500000	33-12a	2.86	170800020203	Elk Creek
2500000	35-16a	0.00		
2500000	33-12a	0.66		
2559000	33-12a	0.02		
2560000	33-12a	0.03		

Road Number	Treatment ID	Miles of Road	Fifth Field Watershed Number	Fifth Field Watershed Name
2573000	33-12a	0.02		
2573460	33-12r2	0.01		
9300000	33-12a	1.91		
9327040	33-12r3	0.11		
2500000	33-12a	0.44	170800020204	Clear Creek
9039000	33-12a	0.01		
9300000	33-12a	4.79		
2500000	33-12a	7.67	170800020205	Muddy River
2500840	33-12a	0.05		
2573000	33-12a	0.02		
2588000	33-12a	0.03		
8300000	33-07r4	0.23		
8322000	33-07r3	0.05		
9300000	33-12a	0.63		
9300150	33-12a	0.01		
2500000	33-12a	1.26	170800020301	Pine Creek
8300000	31-08r3	0.16	170800020302	Swift Creek
8312000	31-08r3	0.13		
2500000	31-08r4	0.70	170800020303	Upper Swift Reservoir
3100000	33-12a	0.07		
9000000	33-12a	2.33		
3100000	33-12a	0.33	170800020304	Drift Creek
5700000	31-01a	4.70	170800020401	Upper Siouxon Creek
5700318	31-01a	0.02		
5814000	31-01a	0.01		
5700000	31-01a	1.05	170800020402	Lower Siouxon Creek
5700000	31-01a	0.01		
5700322	31-01a	0.01		
5701000	31-01r2	0.02		
5704000	31-01a	0.00		
8303000	33-07r2	0.01	170800020404	Cougar Creek
8303000	31-09r2	0.02		
8303000	31-09qa	0.04		
8303173	33-07r2	0.01		
8303173	31-09r2	0.02		

Road Number	Treatment ID	Miles of Road	Fifth Field Watershed Number	Fifth Field Watershed Name
8303000	33-07r2	0.01	170800020405	Upper Yale Reservoir
8303000	33-07r4	0.06		
3810000	31-01a	0.01	170800020501	East Fork Lewis River Headwaters
4100000	31-01a	2.04		
4200000	31-01a	8.76		
4200510	31-01a	0.04		
3800000	31-01a	0.00	170800020502	Upper East Fork Lewis River
4100000	31-01a	1.22		
4200000	31-01a	5.04		
4100000	31-01a	2.55	170800020503	Copper Creek
4100000	31-01r2	5.04		
4104000	31-01a	0.03		
4104000	31-01r2	0.05		
4107000	31-01a	0.03		
3400301	31-01a	0.01	170800020601	Upper Canyon Creek
3700000	31-01a	7.94		
3700526	31-01a	0.01		
3800000	31-01a	4.26		
3810000	31-01a	0.01		
4200000	31-01a	0.25		
5400000	31-01a	9.95		
5400000	31-01a	0.94		
5400308	31-01a	0.01		
5400309	31-01a	0.07		
5704000	31-01a	0.02		
3700000	31-01a	2.72		
3800000	31-01a	2.71		
5300000	31-01q	3.84		
5300000	31-01a	3.01		
5300617	31-01a	0.01		
5301000	31-01a	0.02		
5400000	31-01a	2.97		
5400000	31-01a	8.42		
5400310	31-01a	0.01		
5700000	31-01a	2.66		
5700322	31-01a	0.00		
5700601	31-01a	0.01		
5700610	31-01a	0.02		
5701000	31-01a	0.01		
5704000	31-01a	0.02		

Road Number	Treatment ID	Miles of Road	Fifth Field Watershed Number	Fifth Field Watershed Name
8117000	31-09r2	0.03	170800030101	Kalama Headwaters
8117000	31-09q	0.06		
8117040	31-09q	0.10		
8117680	31-09r2	0.00		
1273000	35-18r1	0.11	170800040101	Ohanapecosh River
4400000	35-14a	4.95	170800040102	Summit Creek
4510000	35-14a	5.51		
1273000	35-18r1	0.53	170800040103	Clear Fork of the Cowlitz River
4600000	35-14a	0.50		
4600000	35-14a	7.50		
4600035	35-14a	1.24		
4610000	35-14a	0.37		
4610018	35-14	1.72		
4612000	35-14	2.59		
4612000	35-14	1.15		
4612045	35-14	0.25		
4612049	35-14	0.16		
4600000	35-14a	1.06	170800040201	Coal Creek
4600013	35-14a	1.02		
4610000	35-14	3.85		
4610018	35-14	0.27		
4612000	35-14	0.85		
1262000	35-14	1.33	170800040202	Lake Creek
1266037	35-14	0.21		
1266041	35-14	2.25		
1266069	35-14	0.89		
1266076	35-14	0.88		
4800000	35-14a	0.04		
4830000	35-14	2.17		
5260000	35-18	0.06	170800040203	Butter Creek
5270000	35-18	5.55		
1262000	35-14	0.99	170800040204	Hall Creek
2100000	35-14a	0.69		
2100019	35-14	0.48		
4800000	35-14a	13.36		
4800031	35-14a	0.48		
4800035	35-14a	0.26		

Road Number	Treatment ID	Miles of Road	Fifth Field Watershed Number	Fifth Field Watershed Name
4800044	35-14a	0.44		
4820000	35-14a	0.49		
4830000	35-14a	4.91		
4830000	35-14	1.84		
5200000	35-18q	0.02		
5270000	35-18	0.42		
4700000	35-17r3	0.03	170800040205	Skate Creek
5200000	35-17r3	0.06		
5200200	35-18	0.09		
5260000	35-18	5.56		
5270000	35-18	1.22		
2100000	35-14a	8.28	170800040206	Johnson Creek
2100000	35-14a	4.14		
2100019	35-14a	0.04		
2100107	35-14a	0.01		
2100119	35-14a	1.55		
2100139	35-14a	0.34		
2130000	35-14a	0.01		
2140000	35-14a	1.49		
4820000	35-14	3.69		
2000000	35-16a	13.90	170800040301	Smith Creek
2000000	35-16a	0.66	170800040303	Kilborn Creek-Cowlitz River
5500000	35-16a	0.07		
5500000	35-16a	1.70	170800040304	Davis Creek-Cowlitz River
2300000	35-16a	3.11	170800040307	Siler Creek
2304000	35-16a	0.01		
2500000	35-16a	1.29		
5500000	35-16a	5.20		
5505000	35-16a	0.01		
2160000	35-14r1	0.85	170800040402	Walupt Creek
2160000	35-14	0.78		
2100000	35-14a	6.20	170800040403	Chambers Creek-Cispus River
2150000	35-14a	0.38		
2150000	35-14	3.30		
2150013	35-14	0.83		
2160000	35-14a	3.91		
2200000	35-16a	0.26		

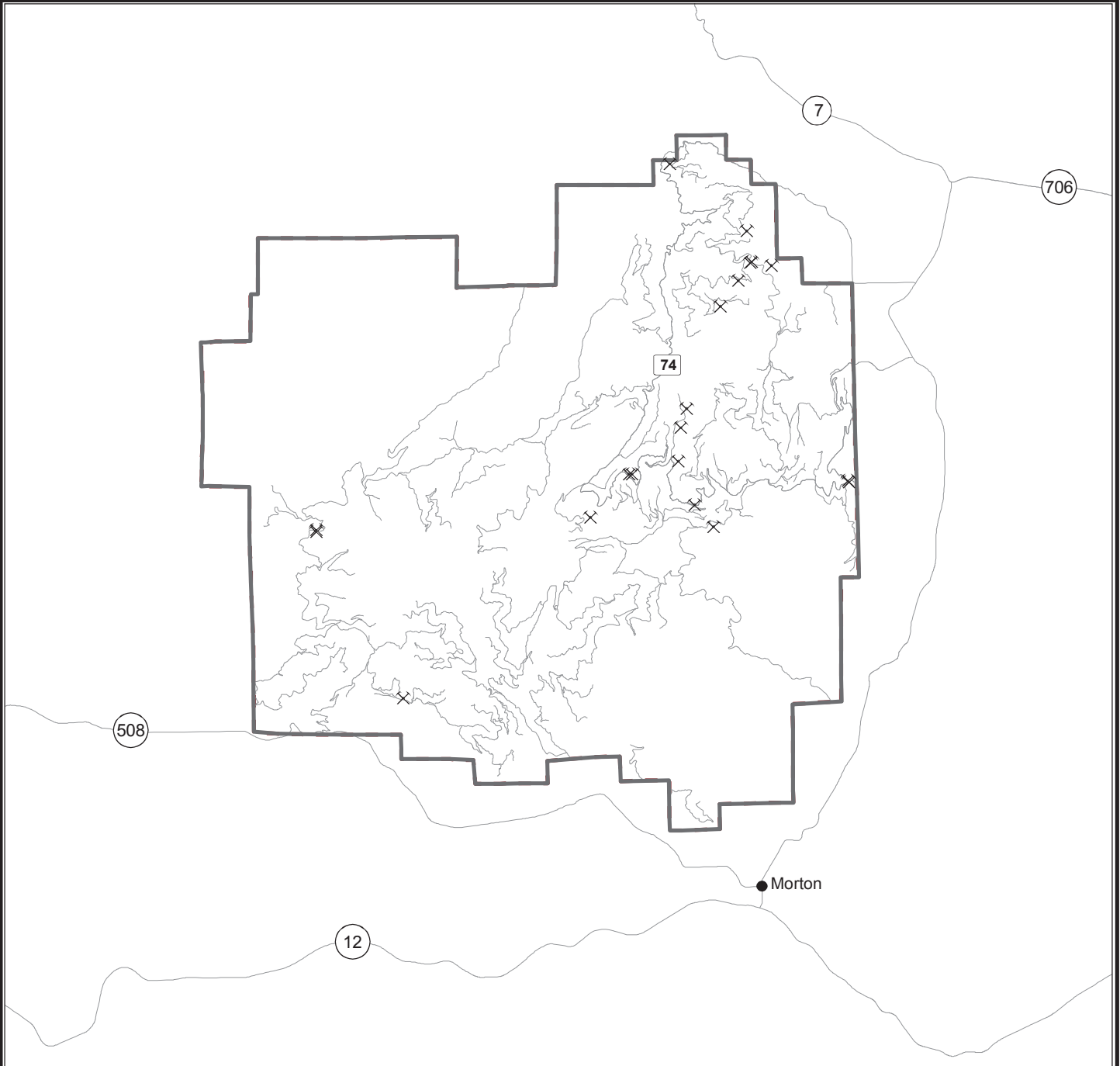
Road Number	Treatment ID	Miles of Road	Fifth Field Watershed Number	Fifth Field Watershed Name
7807000	35-14a	0.01		
2100000	35-14a	4.83	170800040405	Cat Creek-Cispus River
2100000	33-11r1	0.03		
2100000	33-11a	3.85		
2100268	33-11	1.14		
2100268	33-11a	0.31		
2100269	33-11	0.57		
2124000	33-11r1	0.01		
2300000	33-11a	0.30		
2300000	33-11a	1.51		
2322000	33-11	0.48		
2328000	33-11	1.73		
2801000	33-11a	0.01		
7800000	35-16a	2.16		
7800000	35-16a	2.74		
7800111	35-16a	0.01		
7808000	35-16a	0.01		
7812000	35-16a	0.01		
2328021	33-11	0.37	170800040406	Adams Fork
2300000	33-11a	4.19	170800040407	East Canyon Creek
2300000	33-11a	6.82		
2300292	33-11a	2.16		
2300622	33-11a	0.49		
2322000	33-11	1.22		
2324000	33-11a	0.01		
2325000	33-11	4.29		
2325042	33-11	4.06		
2328000	33-11	2.95		
2328000	33-11a	1.15		
2328021	33-11	2.35		
2100000	33-11a	0.79	170800040408	Blue Lake-Cispus River
2300000	35-16a	6.51		
2300000	33-11a	0.53		
2300181	35-16a	0.01		
2317000	35-16a	0.01		
2801000	35-16qa	0.06		
2000000	35-16a	0.18	170800040409	North Fork Cispus River
2200000	35-16a	5.82		
2200000	35-16a	7.36		
2203000	35-16a	0.02		

Road Number	Treatment ID	Miles of Road	Fifth Field Watershed Number	Fifth Field Watershed Name
2208000	35-16a	0.01		
2300000	35-16a	0.87		
2300120	35-16a	0.01		
5500000	35-16a	3.21		
5500116	35-16a	0.00		
5500128	35-16a	0.01		
7800000	35-16a	7.48		
7802000	35-16a	0.01		
7807000	35-16a	0.01		
2800000	35-16a	1.13	170800040501	Yellowjacket Creek
2800000	35-16a	3.55		
2800000	35-16a	7.15		
2809000	35-16a	0.02		
2810000	35-16a	0.03		
2900000	35-16a	4.62		
2900045	35-16a	0.02		
2900694	35-16a	0.01		
2904000	35-16a	0.01		
7600000	35-16a	0.38		
7605000	35-16a	0.01		
7700000	35-16a	2.93		
7700000	35-16a	0.42		
7713000	35-16a	0.03		
2900000	35-16a	5.98	170800040502	McCoy Creek
2900115	35-16a	0.01		
2300000	35-16a	5.10	170800040503	Camp Creek-Cispus River
2300120	35-16a	0.03		
2800000	35-16r3	0.17		
2800000	35-16a	1.46		
2801000	35-16a	0.01		
2900000	35-16r3	0.21		
2900000	35-16a	0.00		
2900694	35-16a	0.00		
5500000	35-16a	2.68		
5500000	35-16a	1.26		
5500108	35-16a	0.02		
5500116	35-16a	0.01		
7600000	35-16a	3.21		
7605000	35-16a	0.01		
7600000	35-16a	0.28	170800040504	Greenhorn Creek
7700000	35-16a	1.48		

Road Number	Treatment ID	Miles of Road	Fifth Field Watershed Number	Fifth Field Watershed Name
7700000	35-16a	9.00		
7700136	35-16a	0.05		
7713000	35-16a	0.00		
2500000	35-16a	8.82	170800040505	Iron Creek
2500000	35-16a	3.77		
2500210	35-16a	0.03		
2500224	35-16a	0.02		
2510054	35-16a	0.02		
2513000	35-16a	0.07		
2515000	35-16a	0.03		
2517000	35-16a	0.03		
2817000	35-16a	0.01		
7600000	35-16a	0.14		
7700000	35-16a	3.44		
7708000	35-16a	0.03		
9900000	35-16a	0.02		
9900000	31-10r3	0.09		
2500000	35-16a	4.59	170800040506	Woods Creek
2505000	35-16a	0.04		
2500000	35-16a	3.33	170800040508	Lower Cispus River Frontal
2508000	35-16a	0.02		
2511000	35-16a	0.02		
2600000	35-16a	0.04		
7600000	35-16a	3.85		
7600014	35-16a	0.01		
7600044	35-16a	0.02		
7700000	35-16a	5.17		
7700660	35-16a	0.01		
5000012	33-07r4	0.34	170800050402	North Fork Toutle River
2600000	33-07r3	0.01	170800050501	Upper Green River
8117680	31-09r2	0.01	170800050601	South Fork Toutle Headwaters
8123000	33-07r3	0.14		
8123000	33-07r2	0.02		
8123000	31-09r2	0.02		
5900000	35-17r3	0.04	171100140301	Puyallup River Headwaters
5200000	35-18	0.01	171100150101	Nisqually Headwaters
5200104	35-18	2.10		

Road Number	Treatment ID	Miles of Road	Fifth Field Watershed Number	Fifth Field Watershed Name
5230032	35-18	0.66		
8440000	35-17r3	0.03	171100150103	Berry Creek
5920000	35-17r3	0.03	171100150104	Copper Creek
8440000	35-17r3	0.03	171100150105	Big Creek
7400000	35-13q	0.07	171100150111	Little Nisqually River

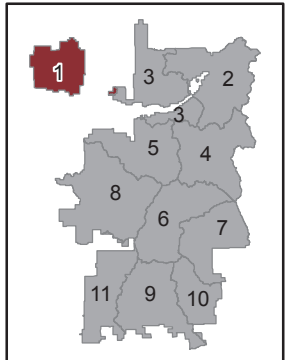
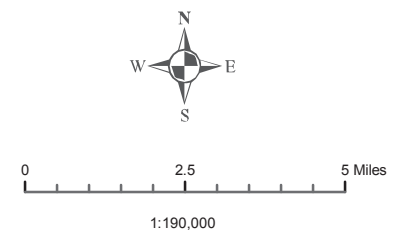
Invasive Plant Treatment Project Treatment Area Types Gifford Pinchot National Forest (Map 1)



Legend

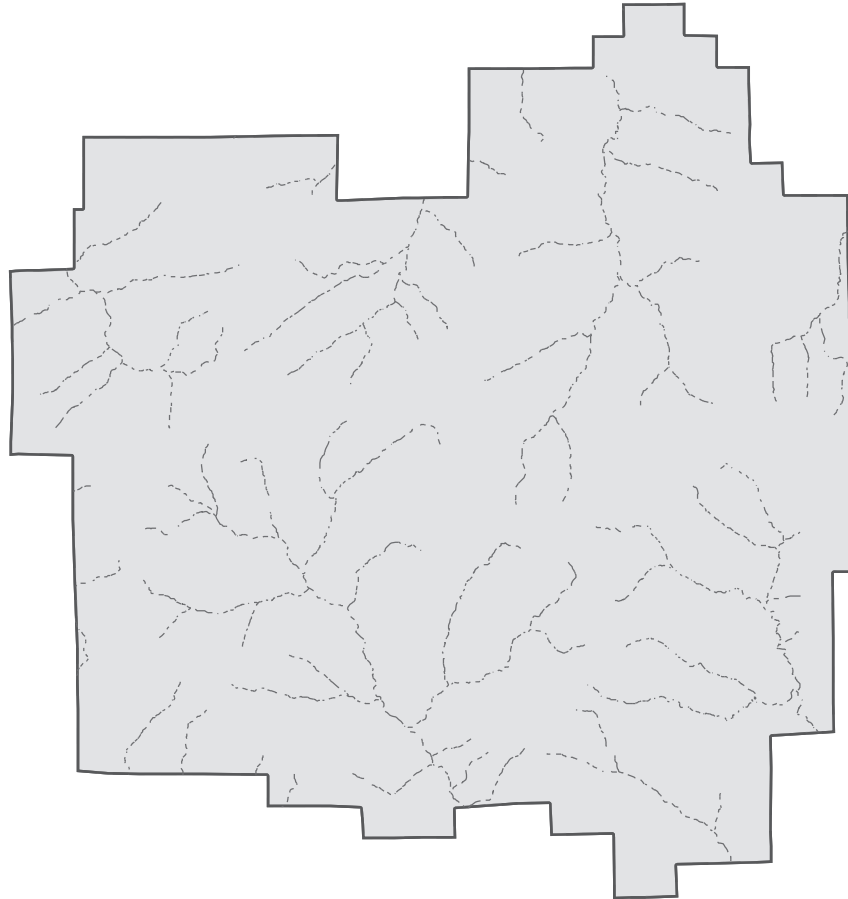
Treatment Area Type	Other roads
✕ Quarries	~
	Gifford Pinchot NF
	▭
	Map 1 display area
	▭

Note: At this scale, not all Treatment Area features can be displayed and some features may be exaggerated for display purposes only.






No warranty is made by the US Forest Service as to the accuracy, reliability, or completeness of these data for individual or aggregate use with other data. Original data were compiled from various sources. This information may not meet National Map Accuracy Standards. This product was developed through digital means and may be updated without notification.

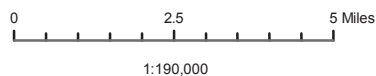
Invasive Plant Treatment Project Roadside Treatment Areas with High Potential for Herbicide Delivery Gifford Pinchot National Forest (Map 1)



Legend

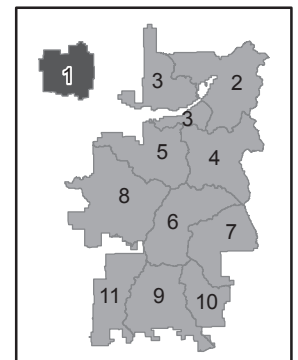
There are no Roadside Treatment Area types in Map 1.

-  Perennial Streams
-  Gifford Pinchot NF
-  Map 1 display area

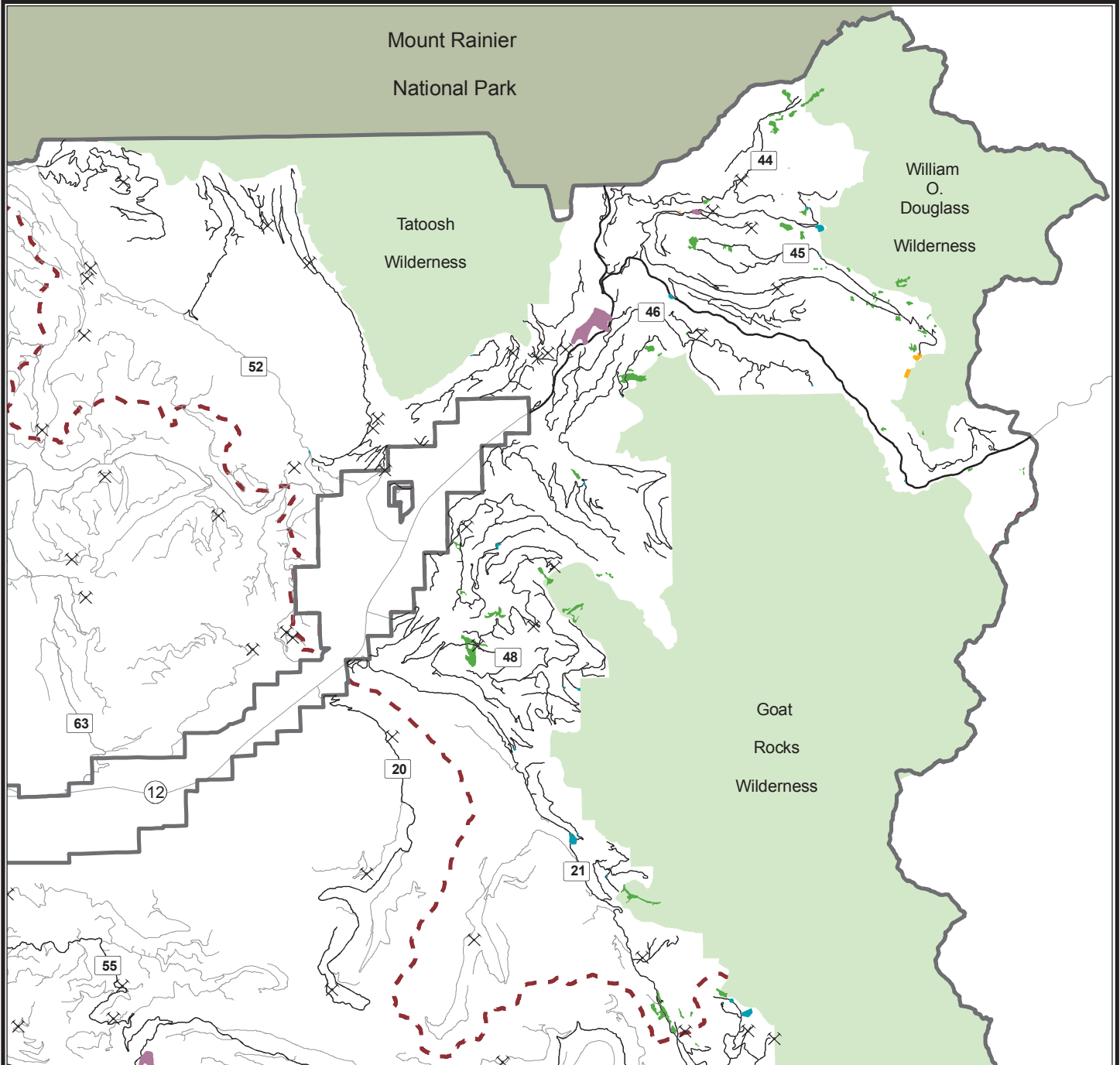


1:190,000

No warranty is made by the US Forest Service as to the accuracy, reliability, or completeness of these data for individual or aggregate use with other data. Original data were compiled from various sources. This information may not meet National Map Accuracy Standards. This product was developed through digital means and may be updated without notification.



Invasive Plant Treatment Project Treatment Area Types Gifford Pinchot National Forest (Map 2)



Legend

Treatment Area Types

- Meadow
- Campgrounds, Camping Areas
- Viewpoints, Parking Areas
- Plantation

- Roadside
- Quarries

Other roads

- Gifford Pinchot NF

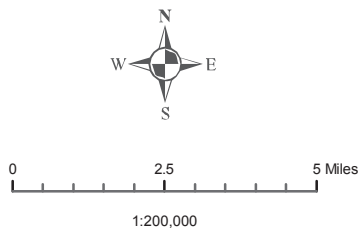
Wilderness

- Mt. Rainier NP

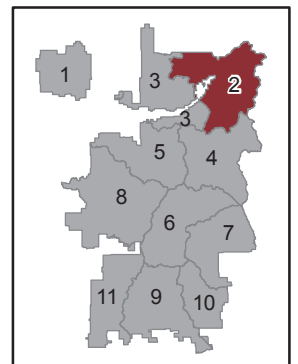
Map 2 display area



Note: At this scale, not all Treatment Area features can be displayed and some features may be exaggerated for display purposes only.



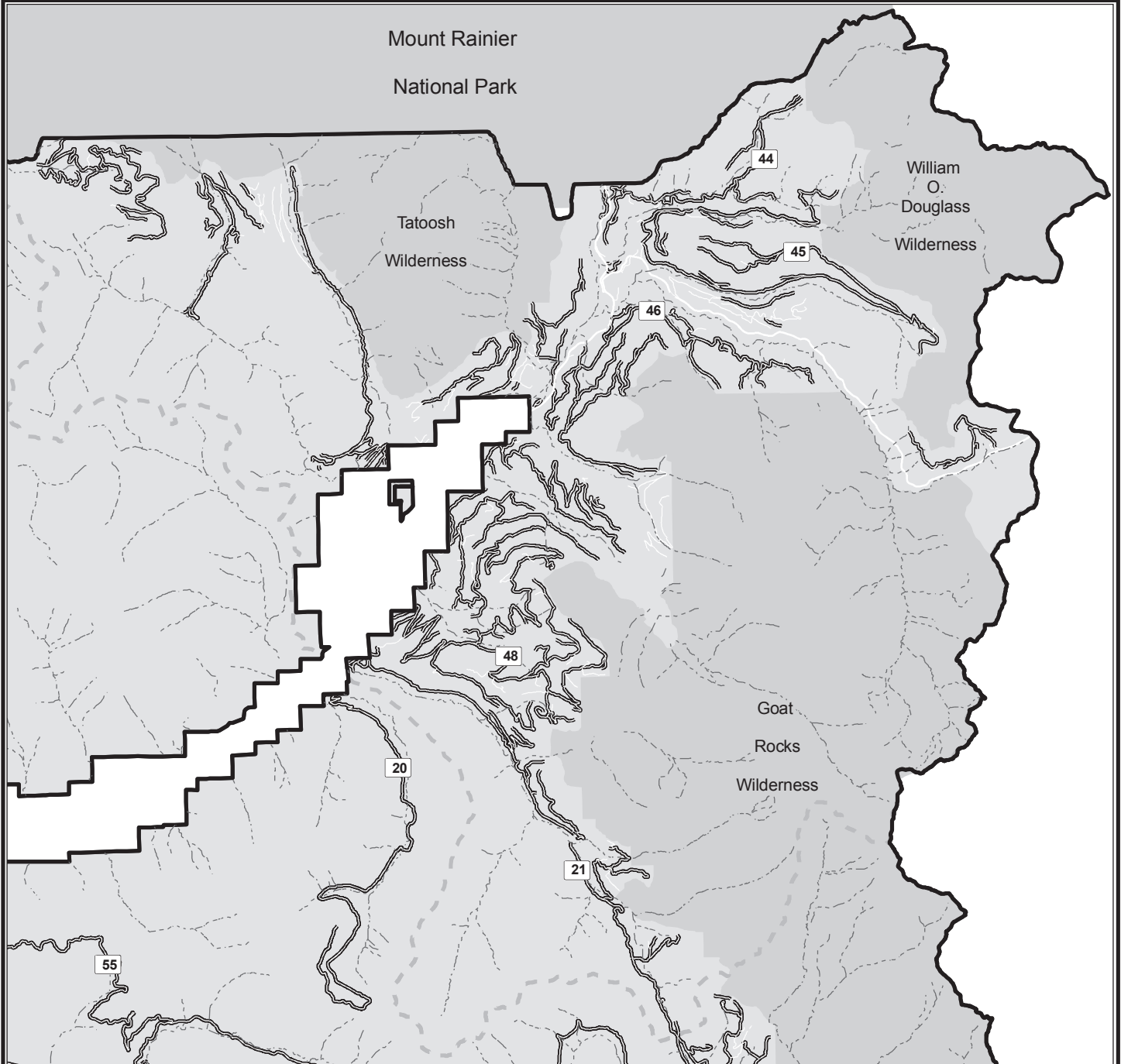
No warranty is made by the US Forest Service as to the accuracy, reliability, or completeness of these data for individual or aggregate use with other data. Original data were compiled from various sources. This information may not meet National Map Accuracy Standards. This product was developed through digital means and may be updated without notification.



Invasive Plant Treatment Project

Roadside Treatment Areas with High Potential for Herbicide Delivery

Gifford Pinchot National Forest (Map 2)




Legend

Roadside Treatment Areas with High Potential for Herbicide Delivery



other Roadside Treatment Areas are in white

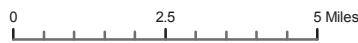
 Major Forest Road

 Perennial Streams

 Gifford Pinchot NF

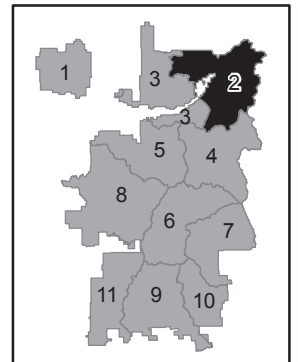
 Wilderness/Mt. Rainier NP

 Map 2 display area

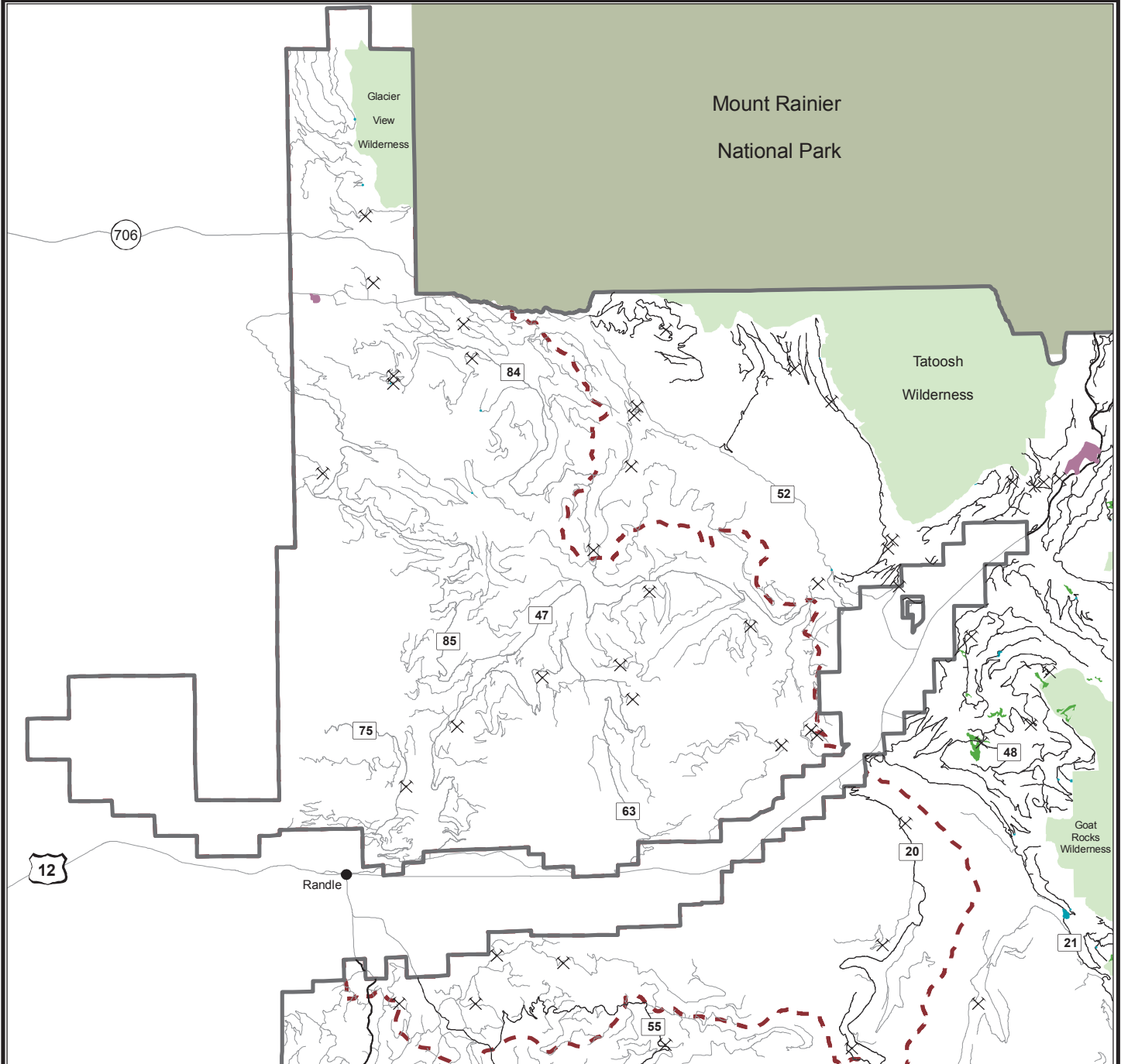


1:200,000

No warranty is made by the US Forest Service as to the accuracy, reliability, or completeness of these data for individual or aggregate use with other data. Original data were compiled from various sources. This information may not meet National Map Accuracy Standards. This product was developed through digital means and may be updated without notification.



Invasive Plant Treatment Project Treatment Area Types Gifford Pinchot National Forest (Map 3)



Legend

Treatment Area Types

- Meadow
- Campgrounds, Camping Areas
- Viewpoints, Parking Areas
- Plantation
- Roadside
- Quarries

Other roads



Gifford Pinchot NF



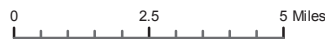
Wilderness



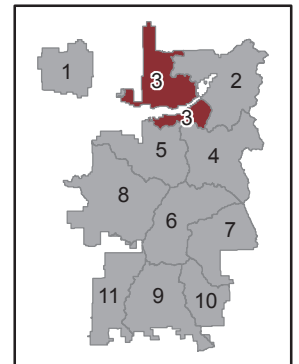
Mt. Rainier NP



Map 3 display area



1:225,000



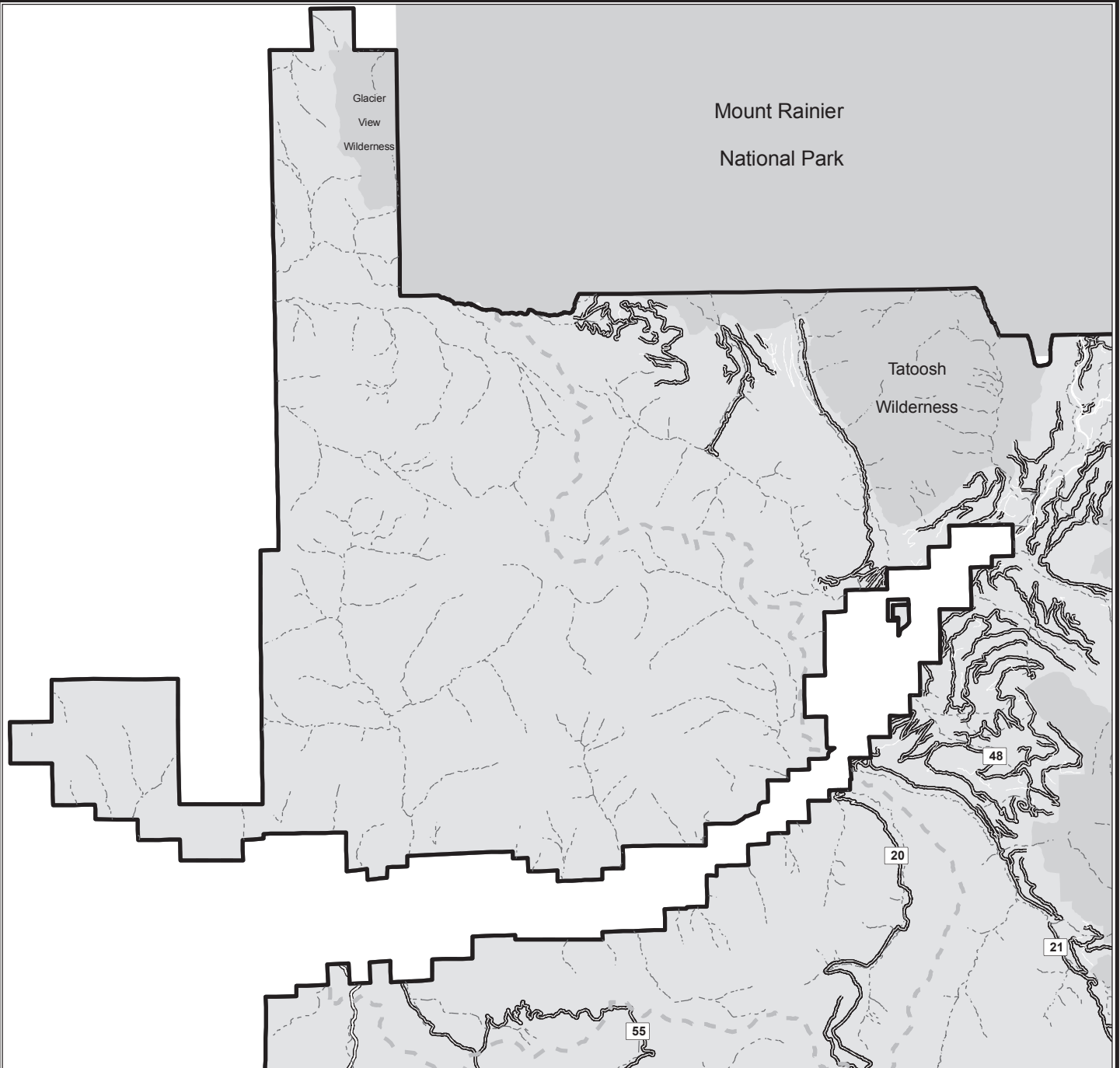
Note: At this scale, not all Treatment Area features can be displayed and some features may be exaggerated for display purposes only.

No warranty is made by the US Forest Service as to the accuracy, reliability, or completeness of these data for individual or aggregate use with other data. Original data were compiled from various sources. This information may not meet National Map Accuracy Standards. This product was developed through digital means and may be updated without notification.

Invasive Plant Treatment Project

Roadside Treatment Areas with High Potential for Herbicide Delivery

Gifford Pinchot National Forest (Map 3)




Legend

Roadside Treatment Areas with High Potential for Herbicide Delivery



other Roadside Treatment Areas are in white

 Major Forest Road

 Perennial Streams

 Gifford Pinchot NF

 Wilderness/Mt. Rainier NP

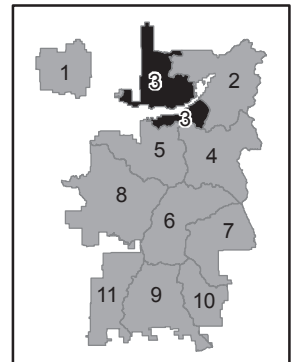
 Map 3 display area



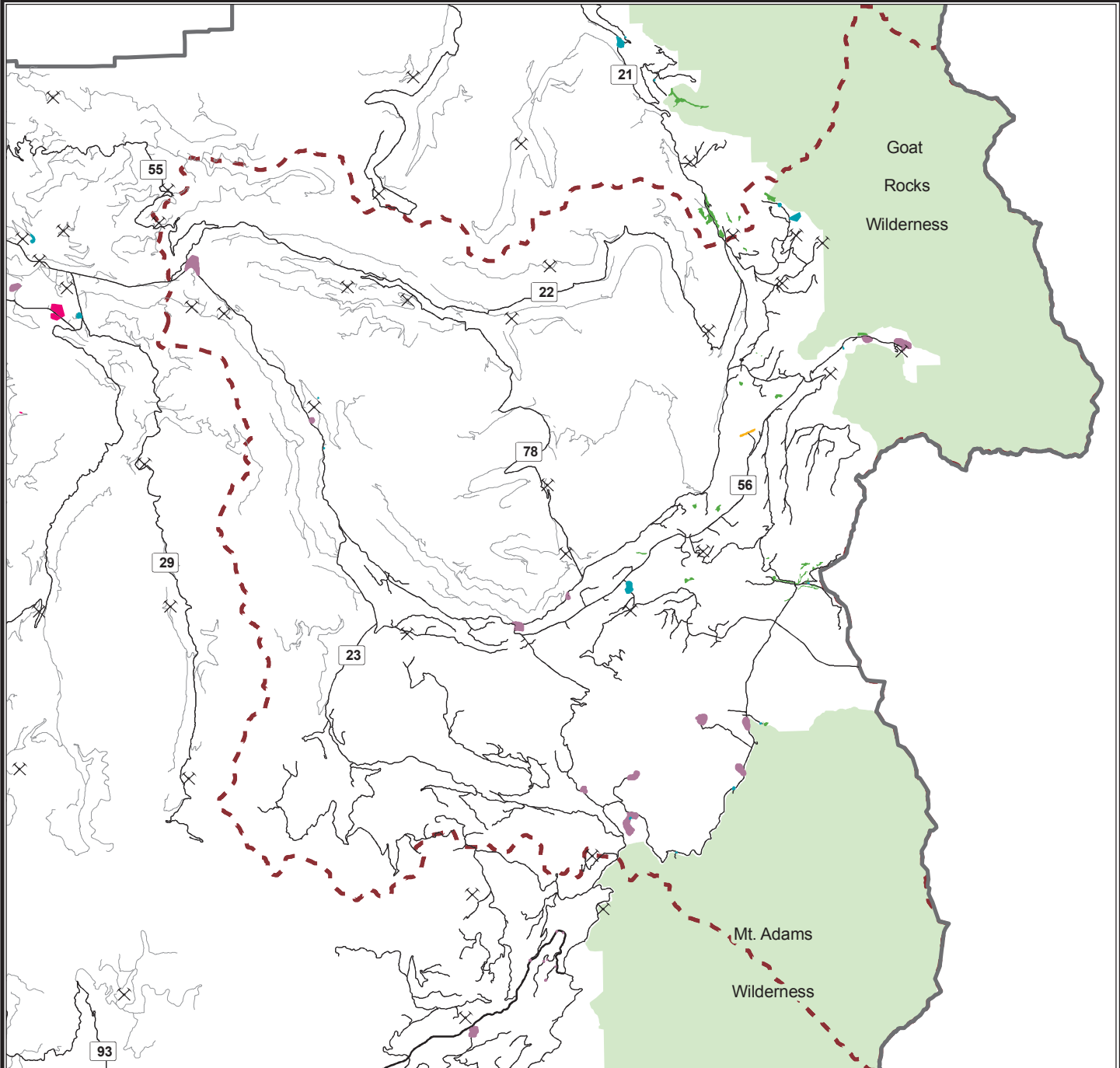
0 2.5 5 Miles

1:225,000

No warranty is made by the US Forest Service as to the accuracy, reliability, or completeness of these data for individual or aggregate use with other data. Original data were compiled from various sources. This information may not meet National Map Accuracy Standards. This product was developed through digital means and may be updated without notification.



Invasive Plant Treatment Project Treatment Area Types Gifford Pinchot National Forest (Map 4)



Legend

Treatment Area Types

- Meadow
- Administrative Sites
- Campgrounds, Camping Areas
- Viewpoints, Parking Areas
- Plantation
- Roadside
- Quarries

Note: At this scale, not all Treatment Area features can be displayed and some features may be exaggerated for display purposes only.

Other roads

-

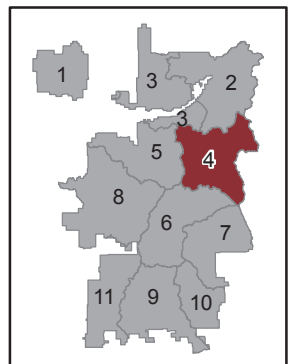
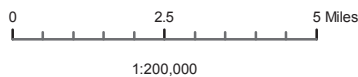
Gifford Pinchot NF



Wilderness



Map 4 display area

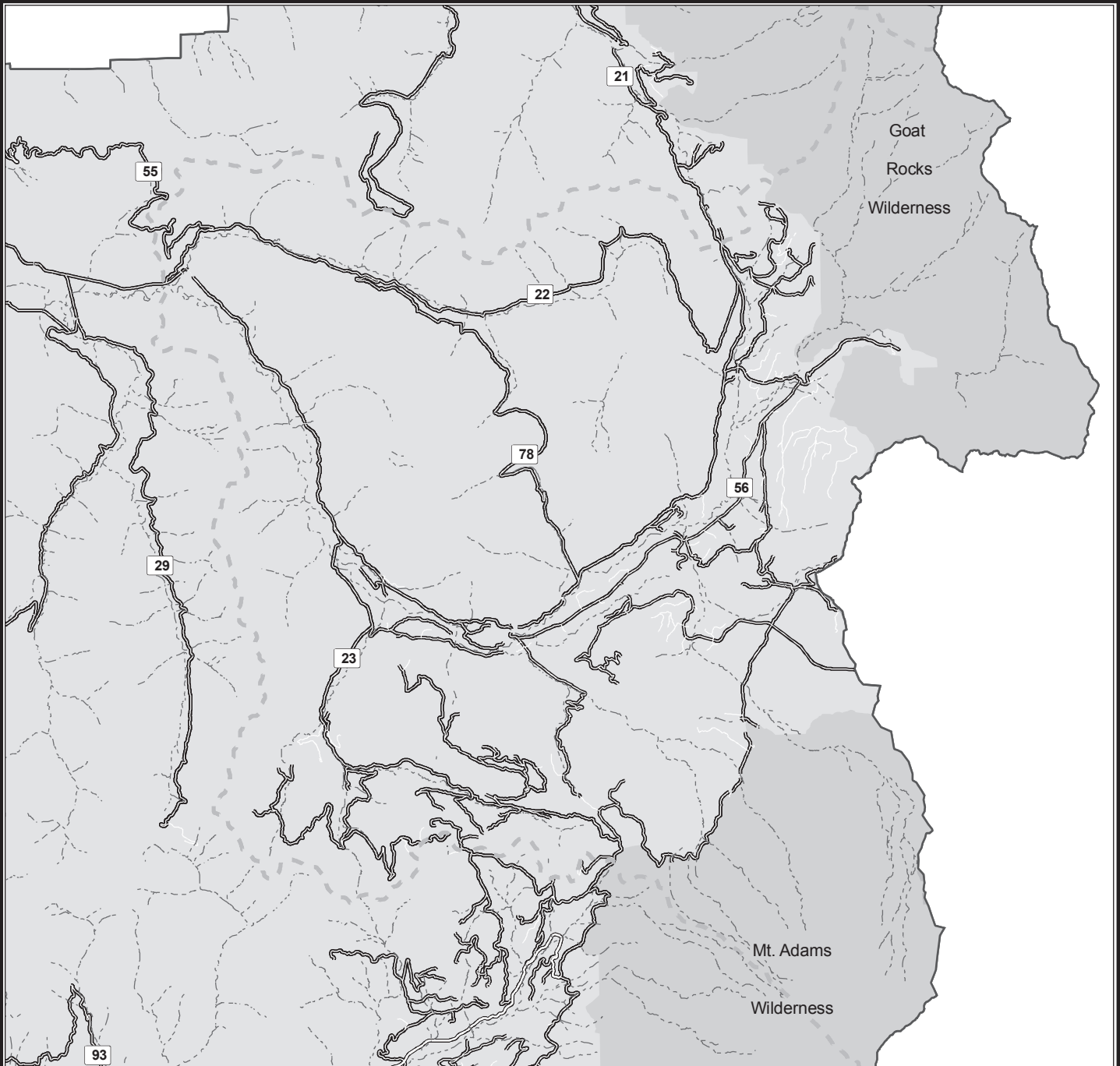


No warranty is made by the US Forest Service as to the accuracy, reliability, or completeness of these data for individual or aggregate use with other data. Original data were compiled from various sources. This information may not meet National Map Accuracy Standards. This product was developed through digital means and may be updated without notification.

Invasive Plant Treatment Project

Roadside Treatment Areas with High Potential for Herbicide Delivery

Gifford Pinchot National Forest (Map 4)



Legend

Roadside Treatment Areas with High Potential for Herbicide Delivery



other Roadside Treatment Areas are in white



Major Forest Road



Perennial Streams



Gifford Pinchot NF



Wilderness



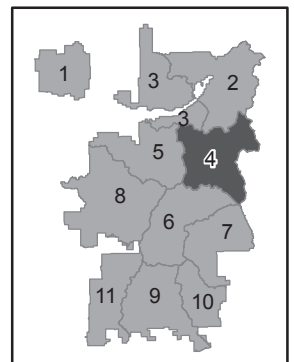
Map 4 display area



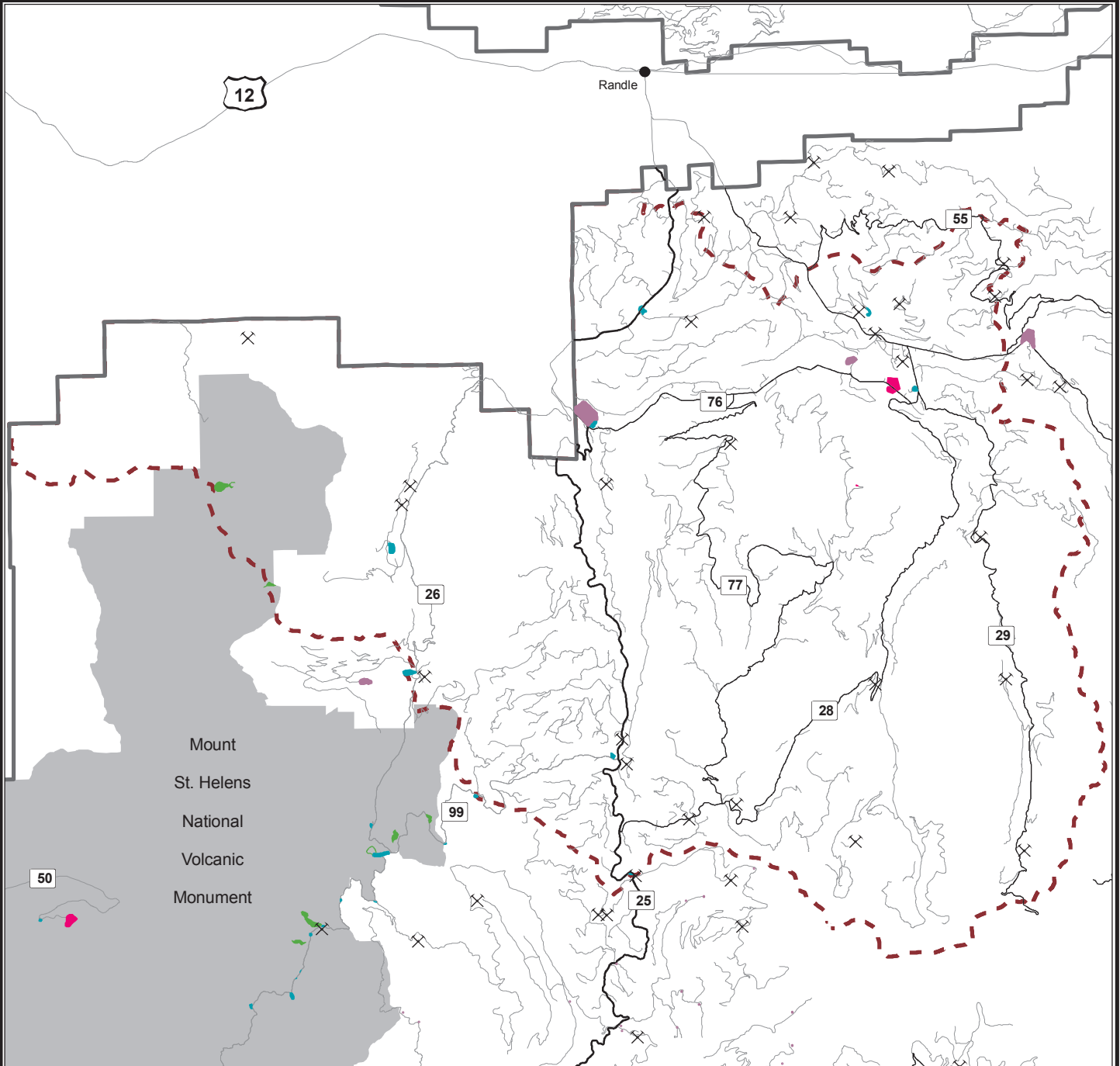
0 2.5 5 Miles

1:200,000

No warranty is made by the US Forest Service as to the accuracy, reliability, or completeness of these data for individual or aggregate use with other data. Original data were compiled from various sources. This information may not meet National Map Accuracy Standards. This product was developed through digital means and may be updated without notification.



Invasive Plant Treatment Project Treatment Area Types Gifford Pinchot National Forest (Map 5)



Legend

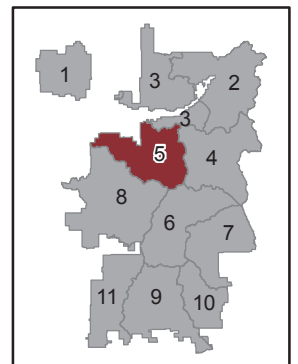
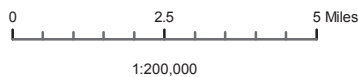
Treatment Area Types

- Meadow
- Administrative Sites
- Campgrounds, Camping Areas
- Viewpoints, Parking Areas
- Roadside
- X Quarries

Other roads

- Gifford Pinchot NF
- Mt. St. Helens NVM
- Map 5 display area

Note: At this scale, not all Treatment Area features can be displayed and some features may be exaggerated for display purposes only.

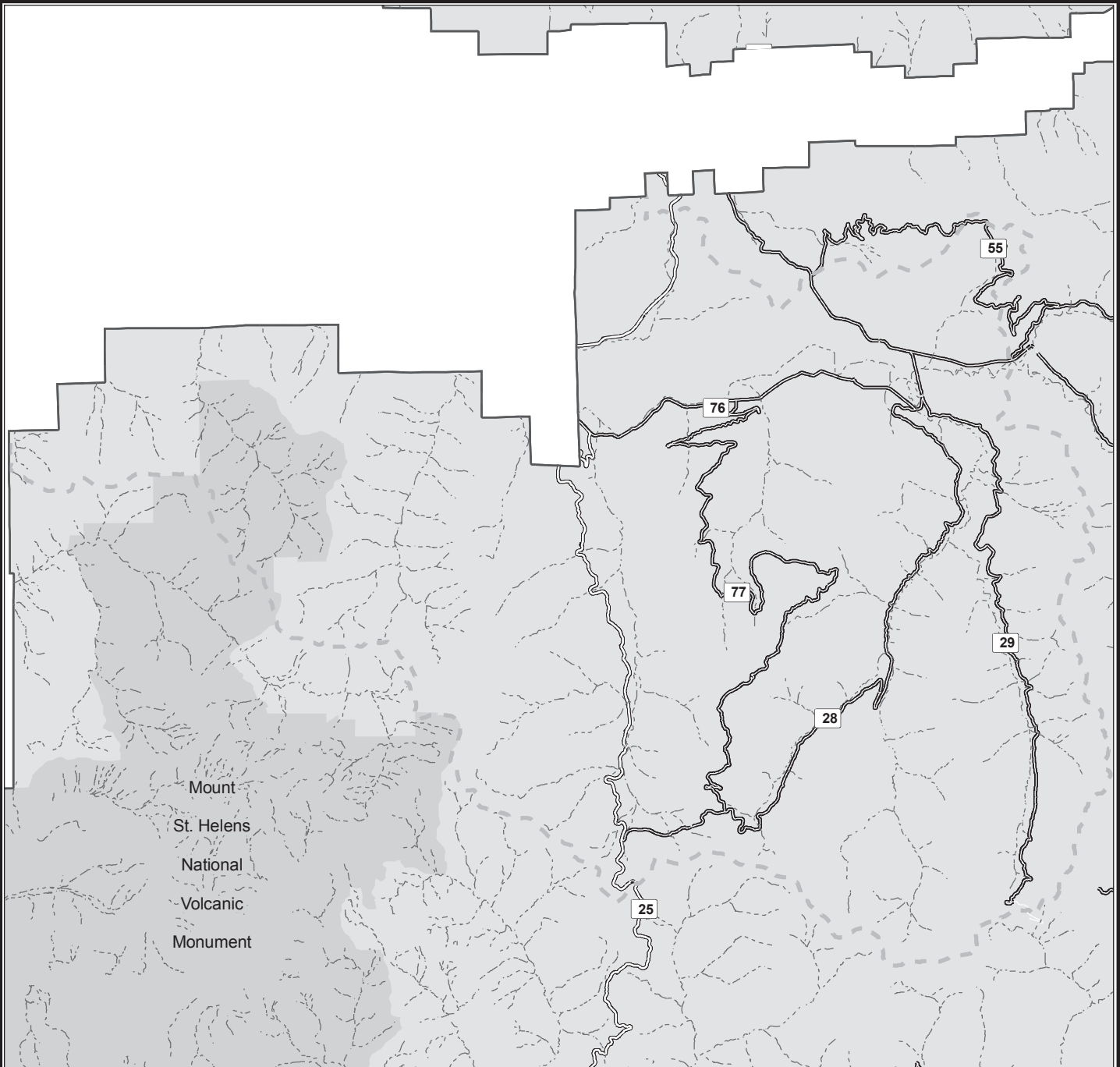


No warranty is made by the US Forest Service as to the accuracy, reliability, or completeness of these data for individual or aggregate use with other data. Original data were compiled from various sources. This information may not meet National Map Accuracy Standards. This product was developed through digital means and may be updated without notification.

Invasive Plant Treatment Project

Roadside Treatment Areas with High Potential for Herbicide Delivery

Gifford Pinchot National Forest (Map 5)



Mount
St. Helens
National
Volcanic
Monument

Legend

Roadside Treatment Areas with High Potential for Herbicide Delivery



other Roadside Treatment Areas are in white



Major Forest Road



Perennial Streams



Gifford Pinchot NF



Mt. St. Helens NVM



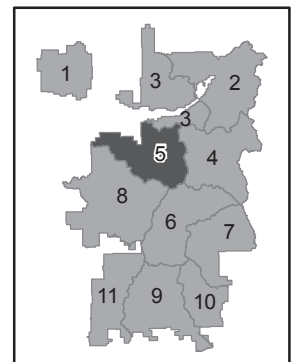
Map 5 display area



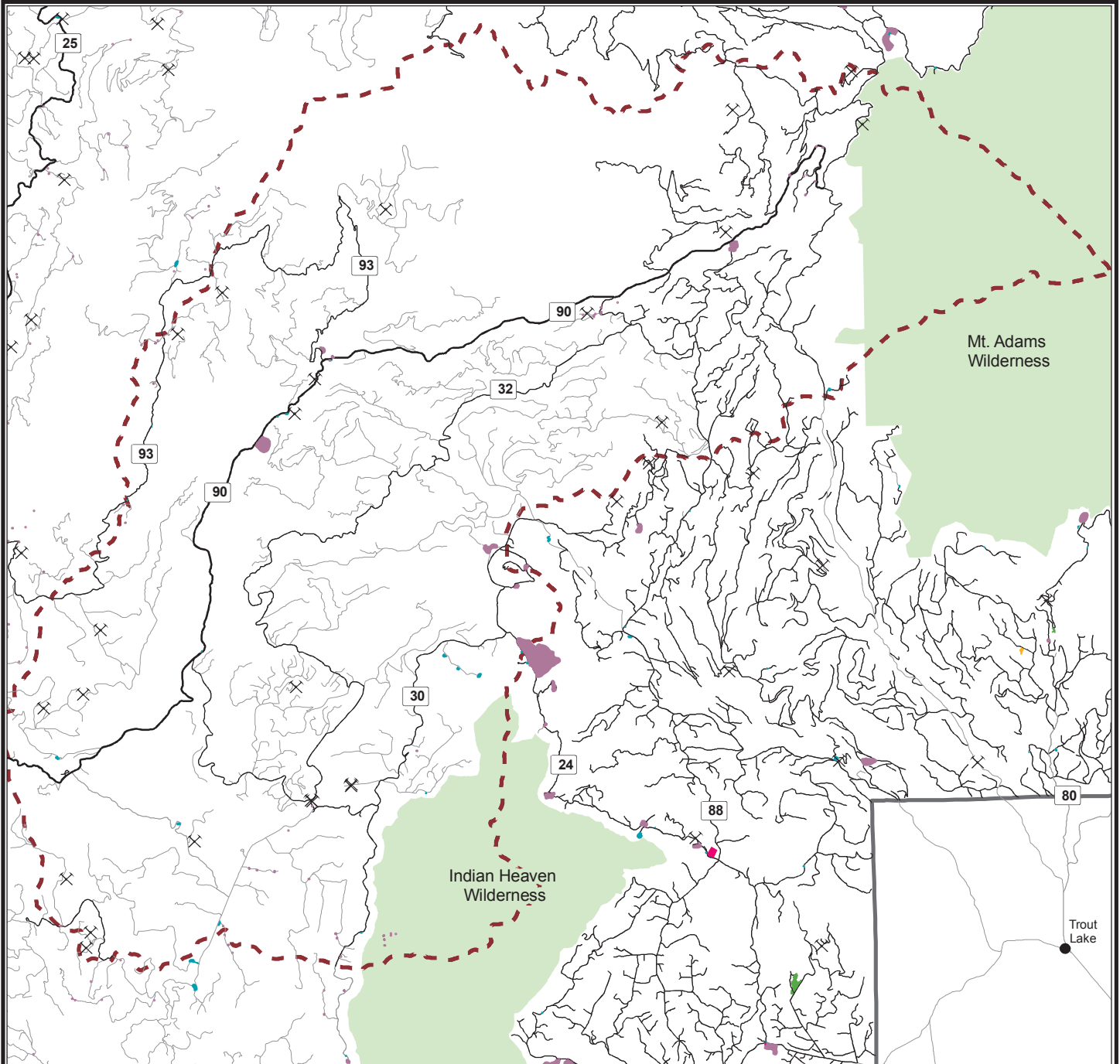
0 2.5 5 Miles

1:200,000

No warranty is made by the US Forest Service as to the accuracy, reliability, or completeness of these data for individual or aggregate use with other data. Original data were compiled from various sources. This information may not meet National Map Accuracy Standards. This product was developed through digital means and may be updated without notification.



Invasive Plant Treatment Project Treatment Area Types Gifford Pinchot National Forest (Map 6)



Legend

Treatment Area Types

- Meadow
- Administrative Sites
- Campgrounds, Camping Areas
- Viewpoints, Parking Areas
- Plantation
- Roadside
- Quarries

Other roads



Gifford Pinchot NF



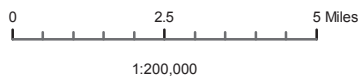
Wilderness



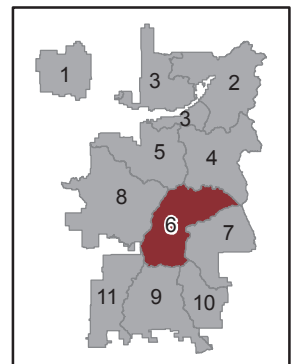
Map 6 display area



Note: At this scale, not all Treatment Area features can be displayed and some features may be exaggerated for display purposes only.



No warranty is made by the US Forest Service as to the accuracy, reliability, or completeness of these data for individual or aggregate use with other data. Original data were compiled from various sources. This information may not meet National Map Accuracy Standards. This product was developed through digital means and may be updated without notification.



Invasive Plant Treatment Project

Roadside Treatment Areas with High Potential for Herbicide Delivery

Gifford Pinchot National Forest (Map 6)



Legend

Roadside Treatment Areas with High Potential for Herbicide Delivery



other Roadside Treatment Areas are in white



Major Forest Road



Perennial Streams



Gifford Pinchot NF



Wilderness



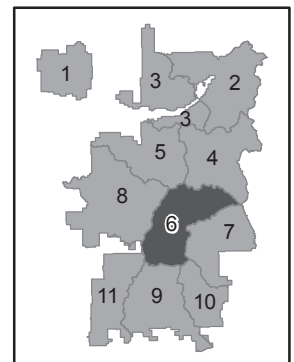
Map 6 display area



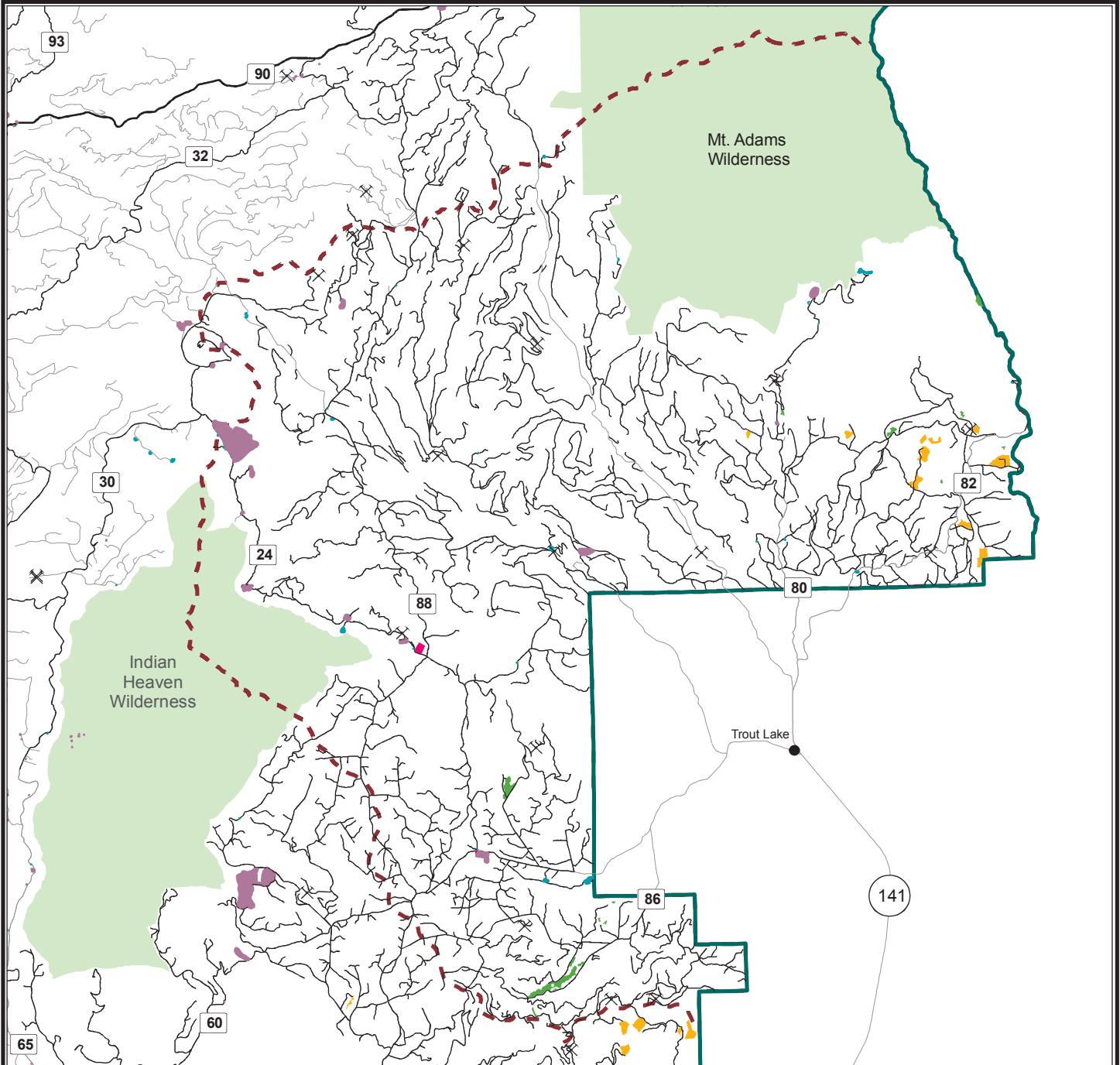
0 2.5 5 Miles

1:200,000

No warranty is made by the US Forest Service as to the accuracy, reliability, or completeness of these data for individual or aggregate use with other data. Original data were compiled from various sources. This information may not meet National Map Accuracy Standards. This product was developed through digital means and may be updated without notification.



Invasive Plant Treatment Project Treatment Area Types Gifford Pinchot National Forest (area 7)



Legend

Treatment Area Types

- Meadow
- Administrative Sites
- Campgrounds, Camping Areas
- Viewpoints, Parking Areas
- Plantation
- Roadside
- Quarries

Other roads

-

Gifford Pinchot NF

-

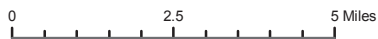
Wilderness

-

Map display area 7

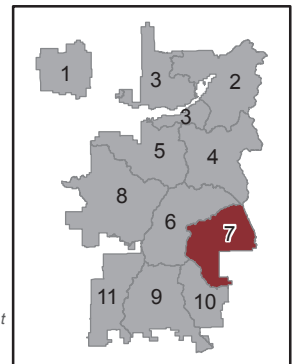
-

Note: At this scale, not all Treatment Area features can be displayed and some features may be exaggerated for display purposes only.



1:190,000

No warranty is made by the US Forest Service as to the accuracy, reliability, or completeness of these data for individual or aggregate use with other data. Original data were compiled from various sources. This information may not meet National Map Accuracy Standards. This product was developed through digital means and may be updated without notification.



Invasive Plant Treatment Project

Roadside Treatment Areas with High Potential for Herbicide Delivery

Gifford Pinchot National Forest (Map 7)



Legend

Roadside Treatment Areas with High Potential for Herbicide Delivery



other Roadside Treatment Areas are in white



Major Forest Road



Perennial Streams



Gifford Pinchot NF



Wilderness



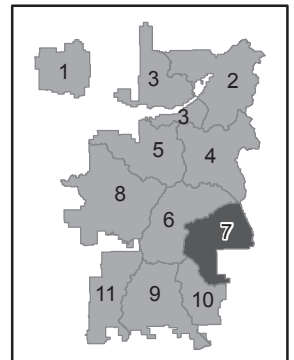
Map 7 display area



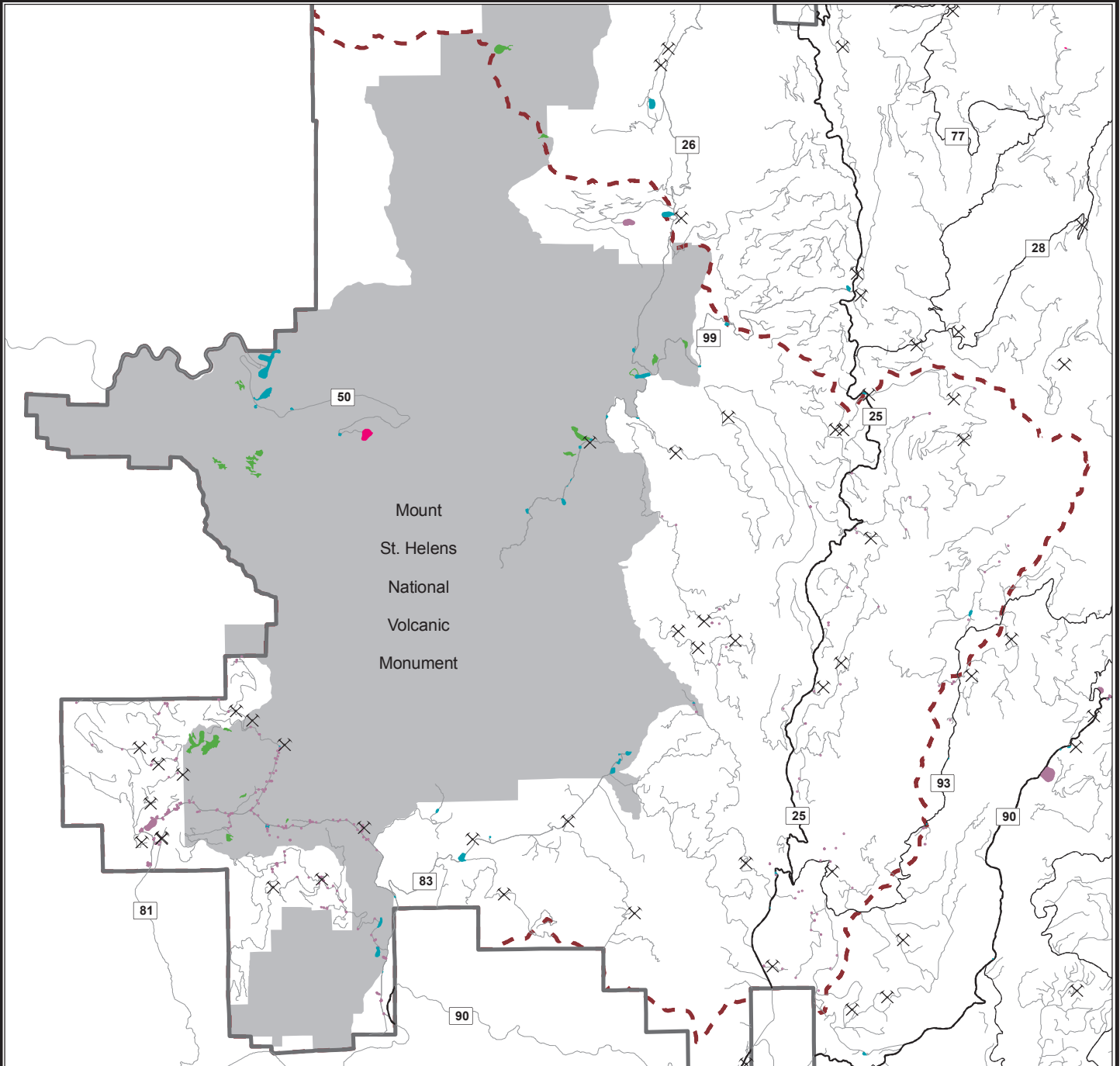
0 2.5 5 Miles

1:190,000

No warranty is made by the US Forest Service as to the accuracy, reliability, or completeness of these data for individual or aggregate use with other data. Original data were compiled from various sources. This information may not meet National Map Accuracy Standards. This product was developed through digital means and may be updated without notification.



Invasive Plant Treatment Project Treatment Area Types Gifford Pinchot National Forest (Map 8)



Legend

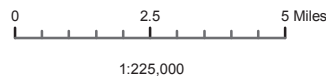
Treatment Area Types

- Meadow
- Administrative Sites
- Campgrounds, Camping Areas
- Viewpoints, Parking Areas
- Roadside
- Quarries

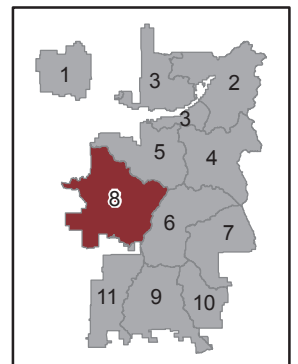
Other roads

- Gifford Pinchot NF
- Mt. St. Helens NVM
- Map 8 display area

Note: At this scale, not all Treatment Area features can be displayed and some features may be exaggerated for display purposes only.



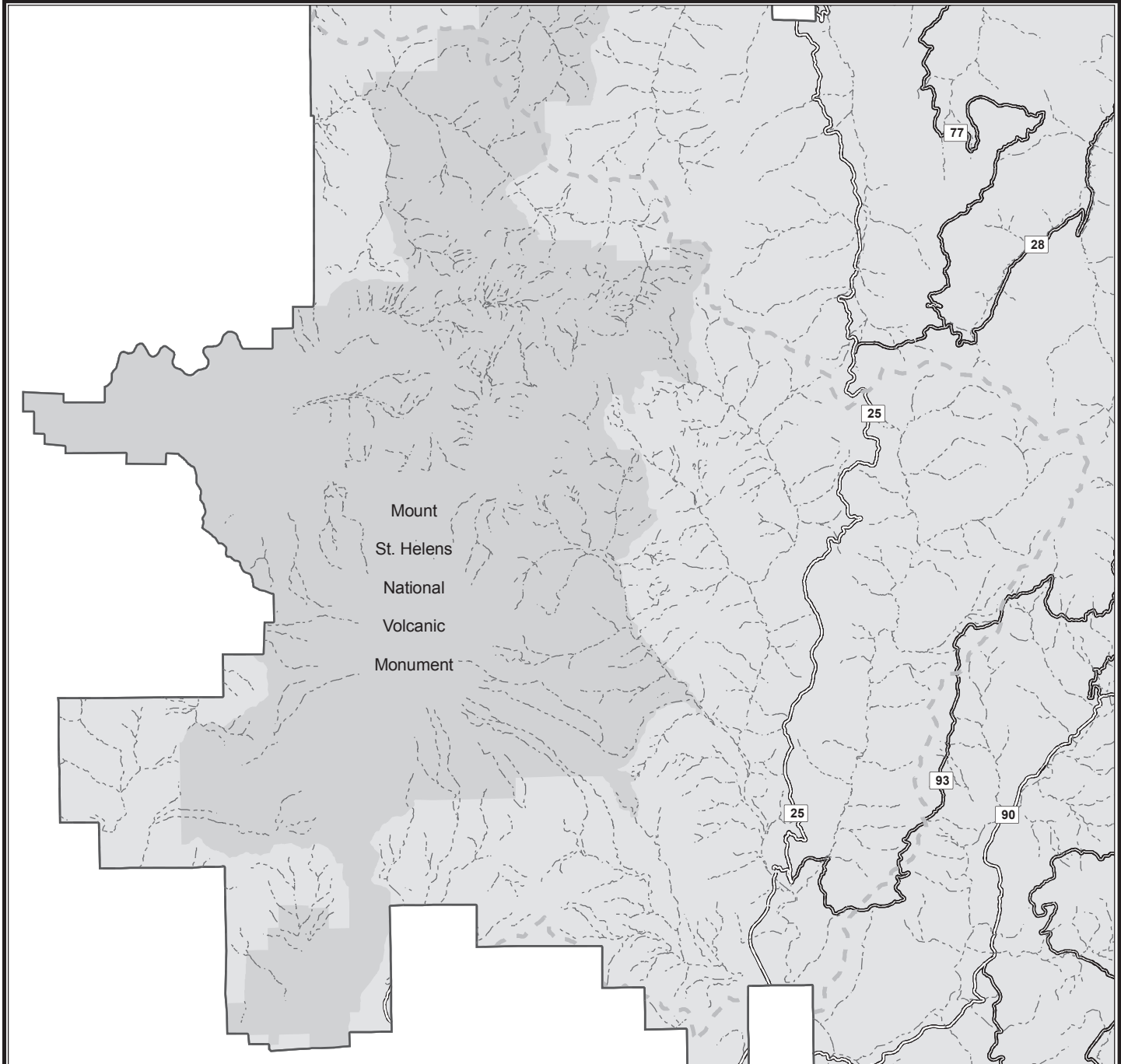
No warranty is made by the US Forest Service as to the accuracy, reliability, or completeness of these data for individual or aggregate use with other data. Original data were compiled from various sources. This information may not meet National Map Accuracy Standards. This product was developed through digital means and may be updated without notification.



Invasive Plant Treatment Project

Roadside Treatment Areas with High Potential for Herbicide Delivery

Gifford Pinchot National Forest (Map 8)



Legend

Roadside Treatment Areas with High Potential for Herbicide Delivery



other Roadside Treatment Areas are in white



Major Forest Road



Perennial Streams



Gifford Pinchot NF



Mt. St. Helens NVM



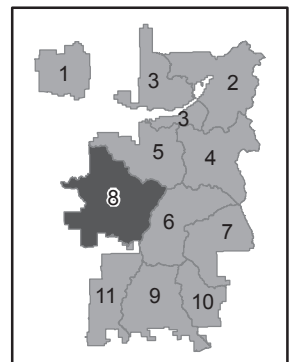
Map 8 display area



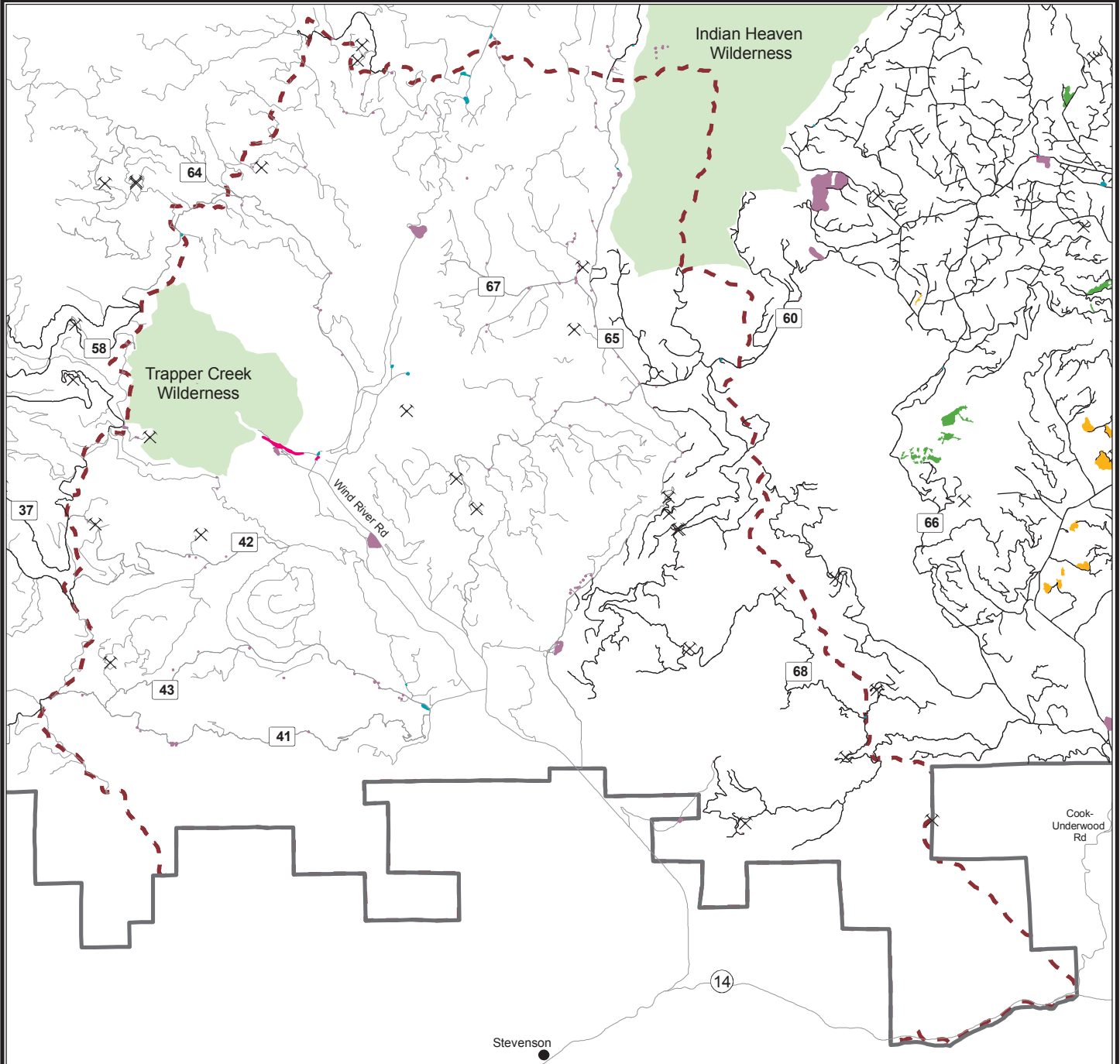
0 2.5 5 Miles

1:225,000

No warranty is made by the US Forest Service as to the accuracy, reliability, or completeness of these data for individual or aggregate use with other data. Original data were compiled from various sources. This information may not meet National Map Accuracy Standards. This product was developed through digital means and may be updated without notification.



Invasive Plant Treatment Project Treatment Area Types Gifford Pinchot National Forest (Map 9)



Legend

Treatment Area Types

- Meadow
- Administrative Sites
- Campgrounds, Camping Areas
- Viewpoints, Parking Areas
- Plantation
- Roadside
- Quarries

Other roads



Gifford Pinchot NF



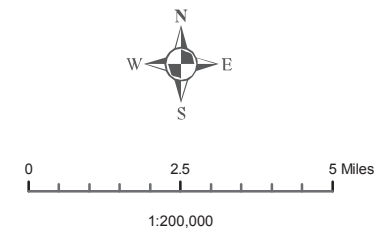
Wilderness



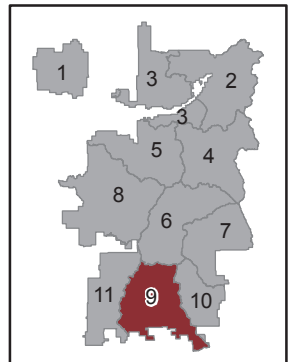
Map 9 display area



Note: At this scale, not all Treatment Area features can be displayed and some features may be exaggerated for display purposes only.



No warranty is made by the US Forest Service as to the accuracy, reliability, or completeness of these data for individual or aggregate use with other data. Original data were compiled from various sources. This information may not meet National Map Accuracy Standards. This product was developed through digital means and may be updated without notification.



Invasive Plant Treatment Project

Roadside Treatment Areas with High Potential for Herbicide Delivery

Gifford Pinchot National Forest (Map 9)




Legend

Roadside Treatment Areas with High Potential for Herbicide Delivery



other Roadside Treatment Areas are in white

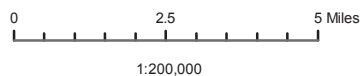
 Major Forest Road

 Perennial Streams

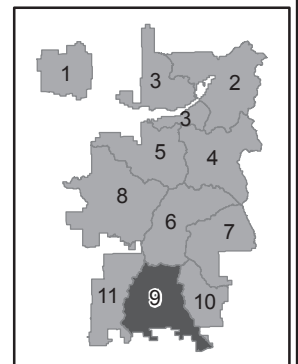
 Gifford Pinchot NF

 Wilderness

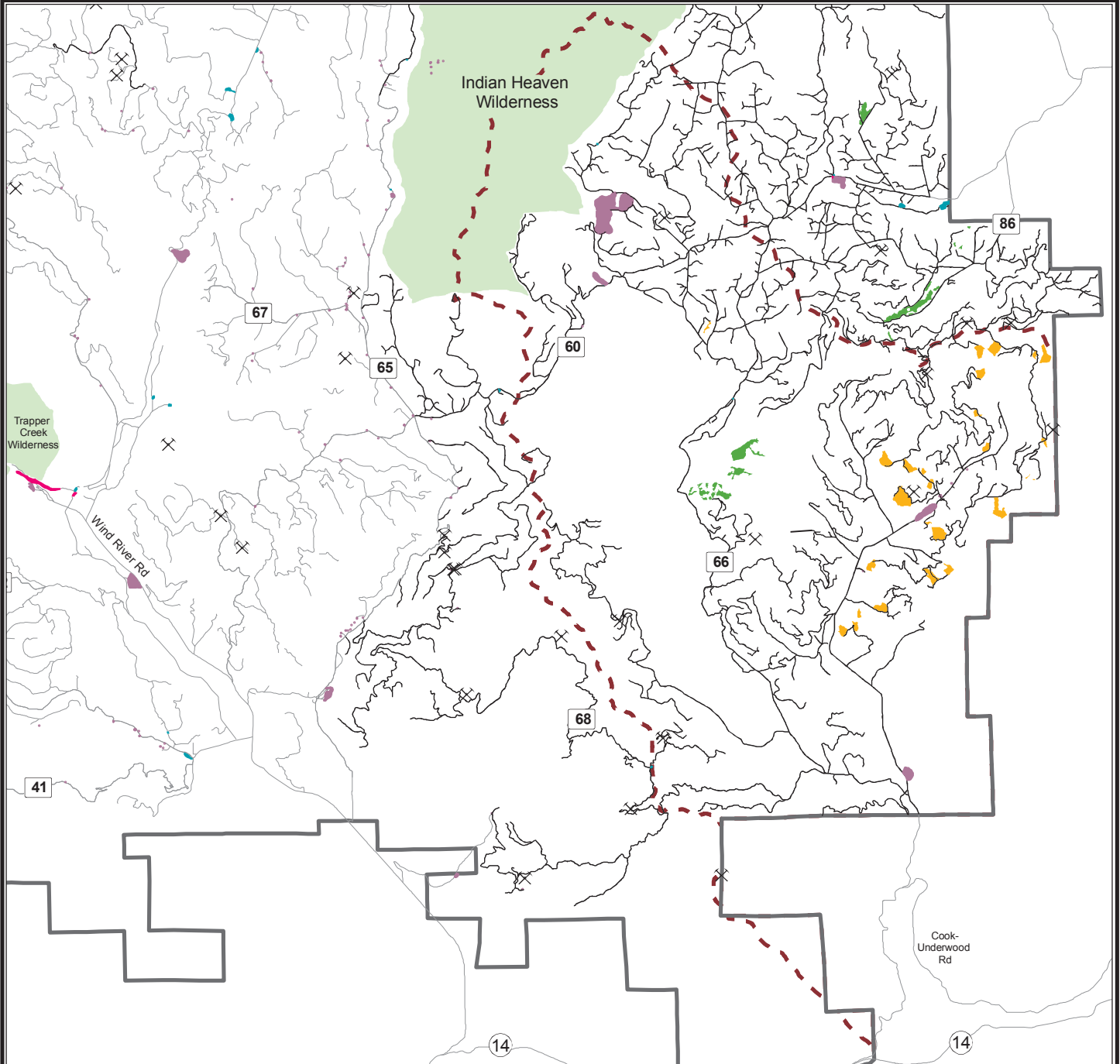
 Map 9 display area



No warranty is made by the US Forest Service as to the accuracy, reliability, or completeness of these data for individual or aggregate use with other data. Original data were compiled from various sources. This information may not meet National Map Accuracy Standards. This product was developed through digital means and may be updated without notification.



Invasive Plant Treatment Project Treatment Area Types Gifford Pinchot National Forest (Map 10)



Legend

Treatment Area Types

- Meadow
- Administrative Sites
- Campgrounds, Camping Areas
- Viewpoints, Parking Areas
- Plantation
- Roadside
- Quarries

Other roads



Gifford Pinchot NF



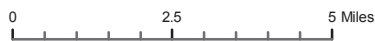
Wilderness



Map 10 display area

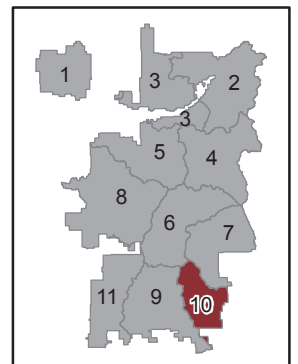


Note: At this scale, not all Treatment Area features can be displayed and some features may be exaggerated for display purposes only.



1:190,000

No warranty is made by the US Forest Service as to the accuracy, reliability, or completeness of these data for individual or aggregate use with other data. Original data were compiled from various sources. This information may not meet National Map Accuracy Standards. This product was developed through digital means and may be updated without notification.



Invasive Plant Treatment Project

Roadside Treatment Areas with High Potential for Herbicide Delivery

Gifford Pinchot National Forest (Map 10)



Legend

Roadside Treatment Areas with High Potential for Herbicide Delivery



other Roadside Treatment Areas are in white



Major Forest Road



Perennial Streams



Gifford Pinchot NF



Wilderness



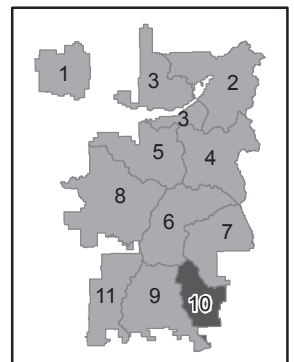
Map 10 display area



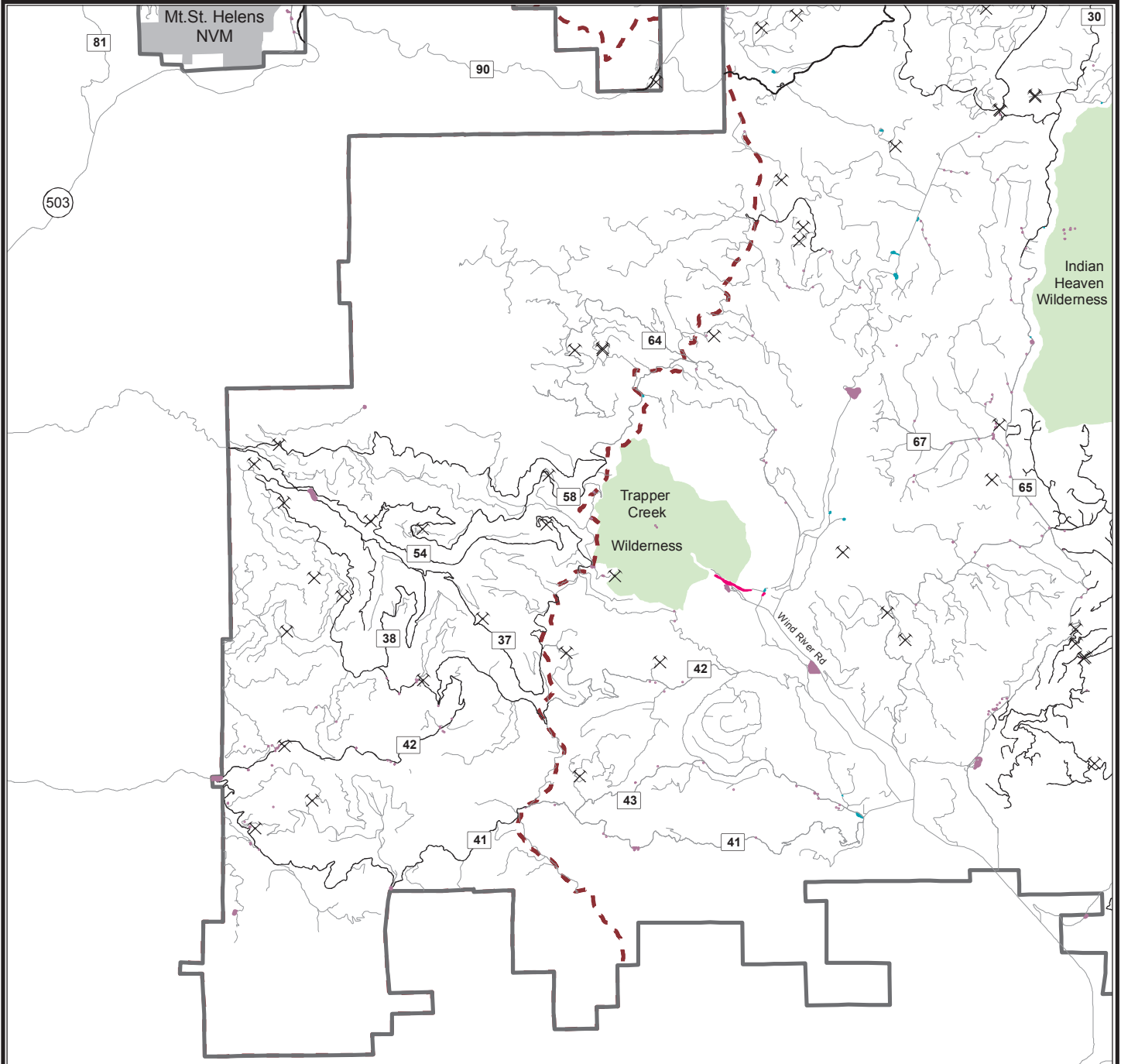
0 2.5 5 Miles

1:190,000

No warranty is made by the US Forest Service as to the accuracy, reliability, or completeness of these data for individual or aggregate use with other data. Original data were compiled from various sources. This information may not meet National Map Accuracy Standards. This product was developed through digital means and may be updated without notification.



Invasive Plant Treatment Project Treatment Area Types Gifford Pinchot National Forest (Map 11)



Legend

Treatment Area Types

- Administrative Sites
- Campgrounds, Camping Areas
- Viewpoints, Parking Areas

Roadside

Quarries

Other roads

Gifford Pinchot NF

Mt. St. Helens NVM

Wilderness

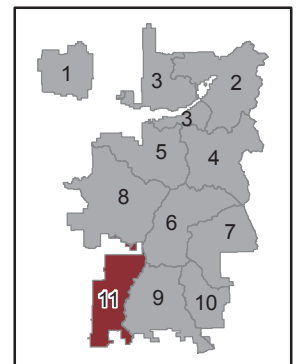
Map 11 display area

Note: At this scale, not all Treatment Area features can be displayed and some features may be exaggerated for display purposes only.



1:225,000

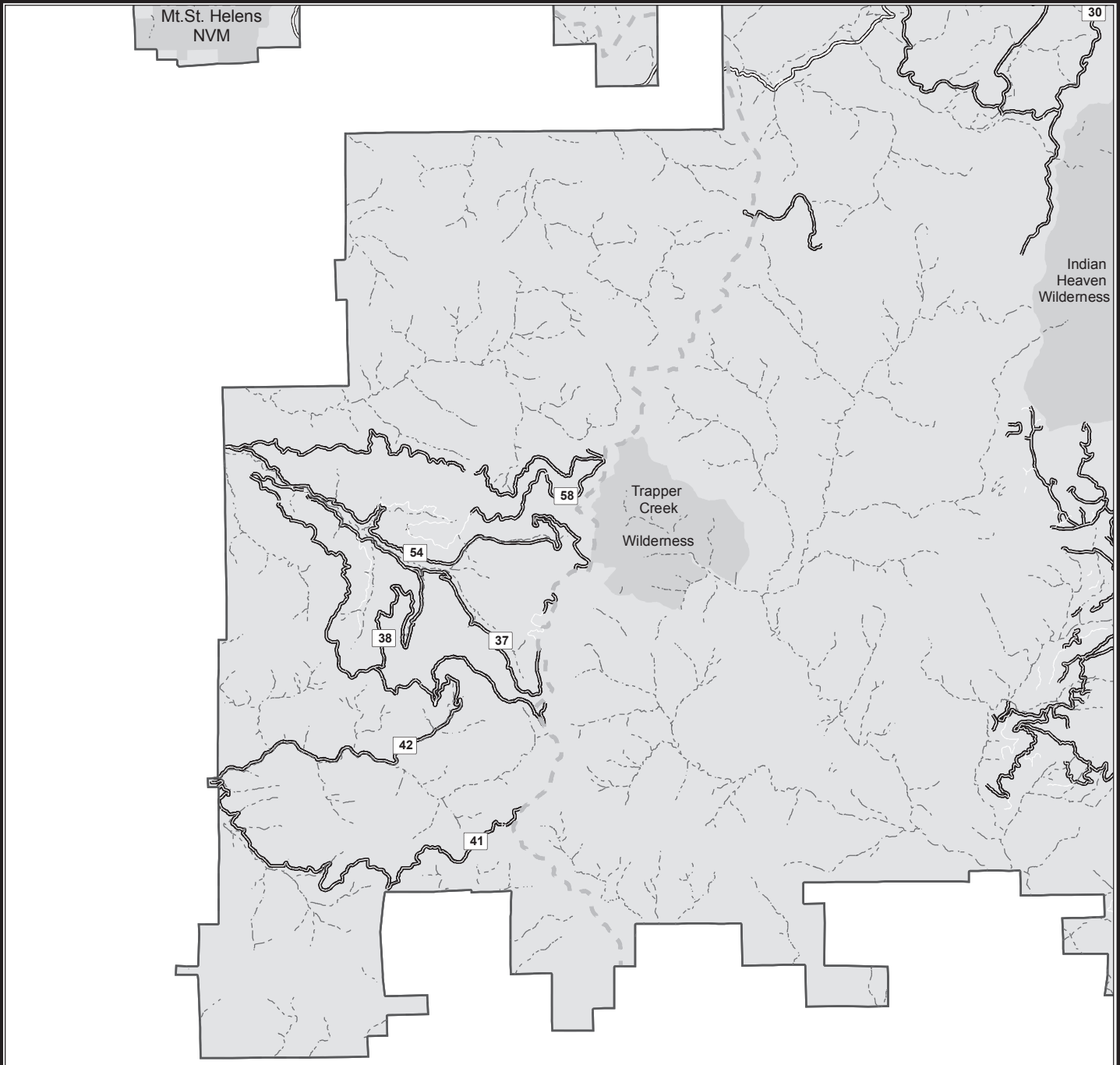
No warranty is made by the US Forest Service as to the accuracy, reliability, or completeness of these data for individual or aggregate use with other data. Original data were compiled from various sources. This information may not meet National Map Accuracy Standards. This product was developed through digital means and may be updated without notification.



Invasive Plant Treatment Project

Roadside Treatment Area with High Potential for Herbicide Delivery

Gifford Pinchot National Forest (Map 11)



Legend

Roadside Treatment Areas with High Potential for Herbicide Delivery



other Roadside Treatment Areas are in White



Major Forest Road



Perennial Streams



Gifford Pinchot NF



Wilderness/Mt. St. Helens NVM



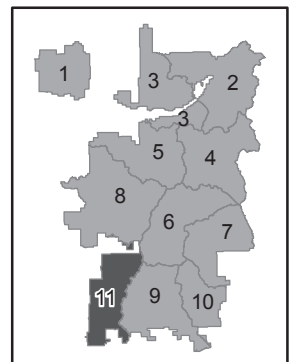
Map 11 display area



0 2.5 5 Miles

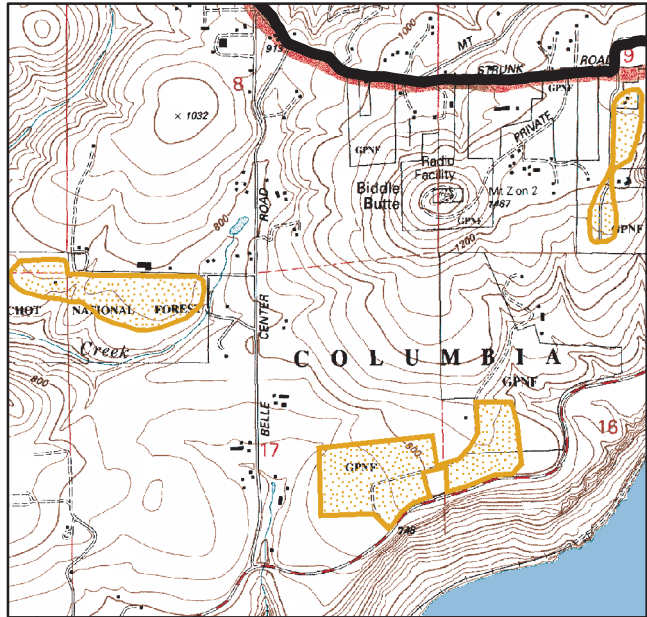
1:225,000

No warranty is made by the US Forest Service as to the accuracy, reliability, or completeness of these data for individual or aggregate use with other data. Original data were compiled from various sources. This information may not meet National Map Accuracy Standards. This product was developed through digital means and may be updated without notification.

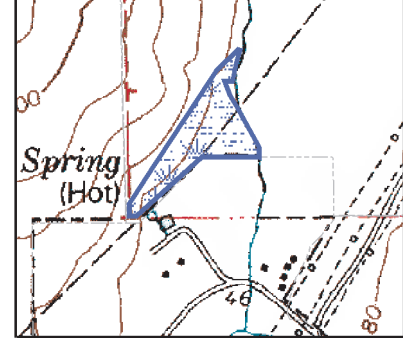


Invasive Plant Treatment Project Columbia River Gorge National Scenic Area

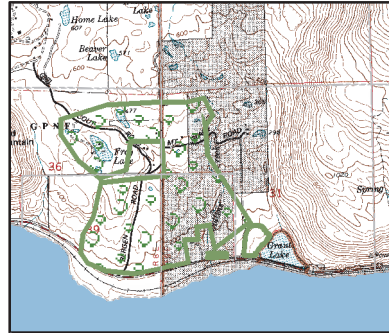
Mt. Pleasant - 22-02



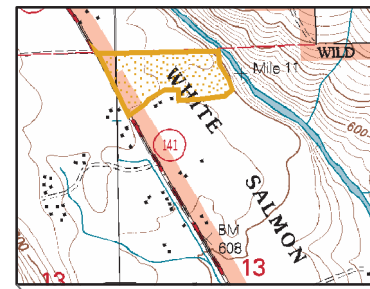
Bonneville Hot Springs - 22-04



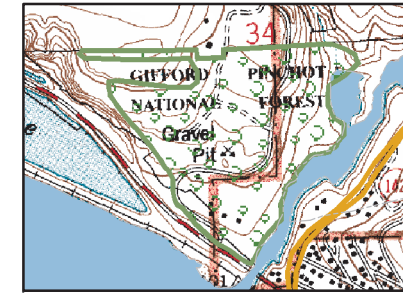
Collin's Slide - 22-06



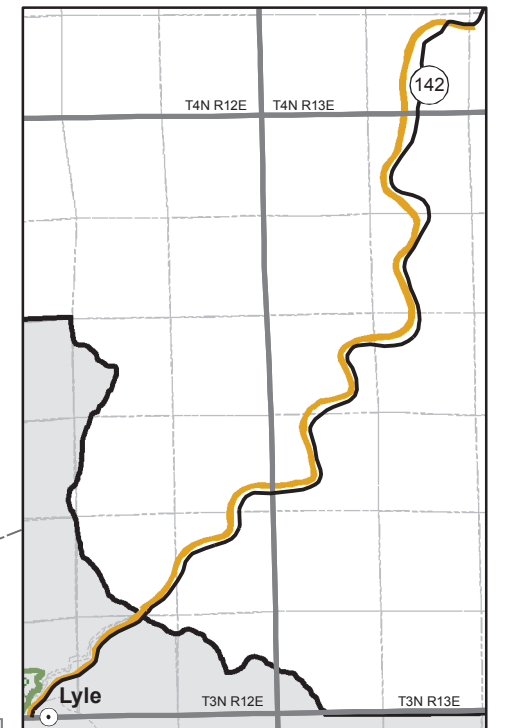
South BZ - 22-15



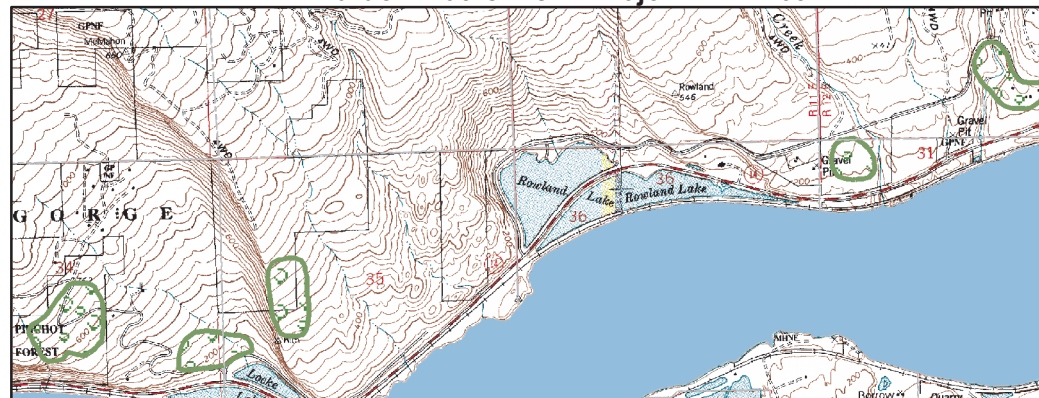
Balfour - 22-10



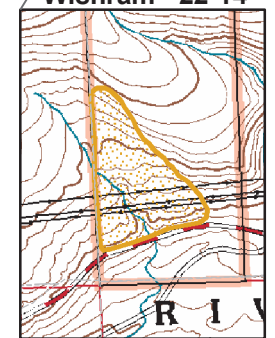
Klickitat Rails-to-trails - 22-16



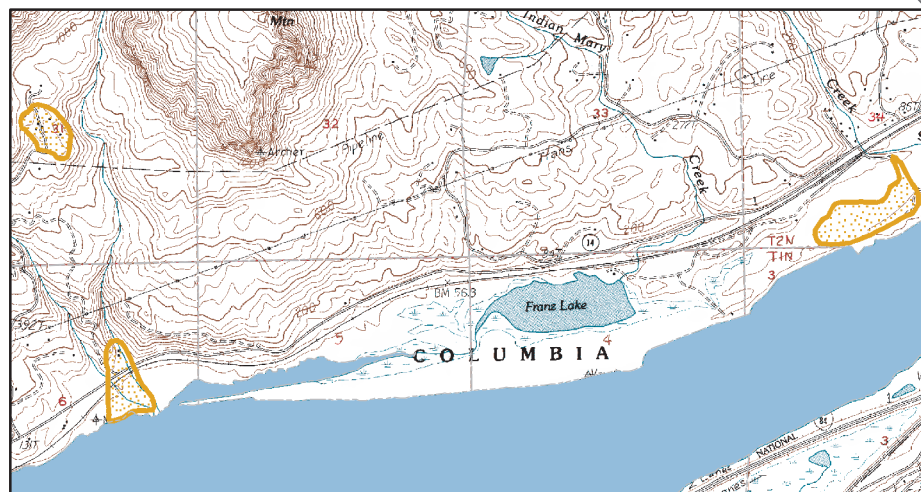
Burdoin/Catherine Cr./Major Cr. - 22-09



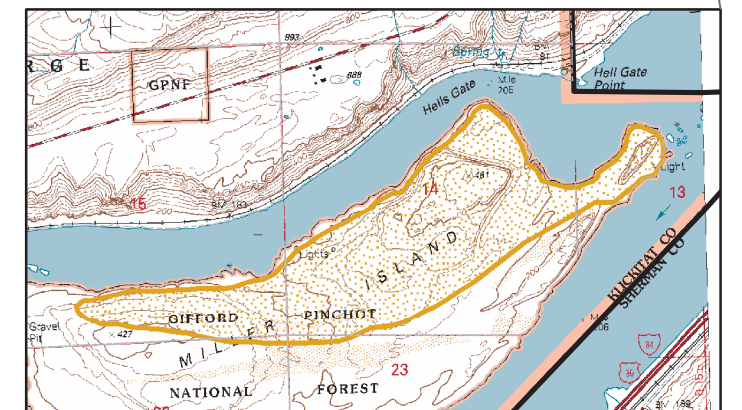
Wishram - 22-14



St. Cloud/Sam Walker/HVF - 22-03



Miller Island - 22-13



Legend

National Scenic Area

Treatment Area Types

Wetland

Forested

Clearings, Fields and Grasslands



0 2.5 5 10 Miles

No warranty is made by the US Forest Service as to the accuracy, reliability, or completeness of these data for individual or aggregate use with other data. Original data were compiled from various sources. This information may not meet National Map Accuracy Standards. This product was developed through digital means and may be updated without notification.

