

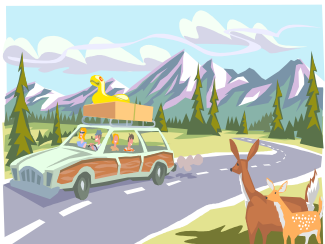
Spring 2002

# New Ground

## *News of the Gifford Pinchot National Forest*

Gifford Pinchot  
National Forest

### ***Roads Analysis Open House Meetings Scheduled for This Summer***



The Gifford Pinchot National Forest will soon share the results of a roads analysis process begun last winter, which will help identify an affordable roads system that meets public and resource needs. A series of public meetings will be held early this summer to present the roads analysis. This review of the current Forest road system will help Forest staff meet future administrative objectives, such as managing a road system that is safe and responsive to public needs and desires, is affordable and reduces adverse environmental effects. The results of this analysis will help the

Forest set priorities for road maintenance funds and make recommendations for future uses and needs for Forest roads. This process will not result in any immediate closure or decommissioning of Forest roads. Thanks to everyone who gave comments this spring during the first stage of the analysis.

### ***Resource Advisory Committees Recommends Funds, and Accepts Additional Projects***

Resource Advisory Committees (RACs) for the north and south halves of the Forest recommended projects under a revised program that requires a portion of federal payments to counties be spent to improve national forest lands. The two 15-member committees recommended a combined \$1.3 million worth of projects for this summer's field season. The South RAC recommended \$866,000 of the \$877,561 allocated by Skamania County for Forest projects. The North RAC recommended \$415,535 in projects, leaving \$100,000 of the money Lewis County allocated for next year.

The public is invited to propose projects by June 1 for improvements on the Gifford Pinchot National Forest during the 2003 field season under the payments to counties legislation.

The RACs will review proposed projects, which will enhance streams and watersheds, maintain roads and trails, control noxious weeds, improve fish and wildlife habitat, and improve ecosystem health. Applications for these Title II proposals can be obtained from Forest Headquarters, 10600 N.E. 51st Circle in Vancouver, district offices, or on line at [www.fs.fed.us/gpnf/county\\_payments](http://www.fs.fed.us/gpnf/county_payments), and return them to Forest Headquarters.

### ***Swift Power Cannel Breached; State Route 503 Damaged***



On Sunday morning April 21, approximately 200 feet of State Route 503 Spur (at milepost 39) was washed away due to a breach in the Swift Power Canal. Washington State DOT has opened a single-lane temporary roadway. Motorists can expect delays between 5 and 10 minutes, with occasional delays of up to 20 minutes, this summer as the road is reconstructed. Cowlitz County Public Utilities District will continue its clean-up activities related to the Yale Reservoir Transformer Spill. Informational signs are posted at the junction of Interstate 5 (I-5) and SR 503 (Woodland) and at the junction of SR 503 and the SR 503 Spur (Cougar Junction). At the Cowlitz/Skamania County line, the SR

503 Spur ends and National Forest Service Road 90 begins, leading into the Gifford Pinchot National Forest. (Information provided by Washington State Department of Transportation)

### ***Forest Employees Serve and Protect Winter Olympics***

In the wake of terrorist attacks that shook the nation on September 11, 2001, four Gifford Pinchot National Forest Law Enforcement Officers provided protection for the 2002 Winter Olympics. Officers Al Knorr, Dan Fahrni, Bob Tokach, and Patrol Captain Christine Lynch were part of a joint agency protection operation at Snowbasin Ski Area near Ogden, UT, site of such events as the Men's and Women's Downhill, Combined, and Super Giant Slalom events. Agents were responsible for staffing perimeter posts, maintaining vehicle and security checkpoints and keeping Olympic athletes, spectators, and workers safe. Officers worked around the clock with other federal, state and county agencies as they performed their duties on skies, snowmobiles, foot, ATVs, and in vehicles. The Salt Lake City Olympics were deemed successful with very few law enforcement related incidents. Thanks!



**How to reach us:**

**Gifford Pinchot National Forest  
Forest Headquarters**  
10600 NE 51<sup>st</sup> Circle  
Vancouver, WA 98682  
24-hr. recording (360) 891-5009  
(360) 891-5001  
**FAX:** (360) 891-5045  
**TTY:** (360) 891-5003

**Cowlitz Valley Ranger District**  
10024 U.S. Hwy 12  
P.O. Box 670  
Randle, WA 98377  
(360) 497-1100  
**FAX:** (360) 497-1102  
**TTY:** (360) 497-1101

**Packwood Work and  
Information Center**  
13068 U.S. Hwy 12  
Packwood, WA 98361  
(360) 494-1172  
**FAX:** (360) 497-1102  
**TTY:** (360) 497-1101

**Mt. Adams Ranger District**  
2455 Highway 141  
Trout Lake, WA 98650  
(509) 395-3400  
**FAX:** (509) 395-3424  
**TTY:** (509) 395-3422

**Wind River Work and  
Information Center**  
1262 Hemlock Road  
Carson, WA 98610  
(509) 427-3200  
**FAX:** (509) 427-3215  
**TTY:** (509) 427-4541

**Mount St. Helens National  
Volcanic Monument**  
42218 NE Yale Bridge Road  
Amboy, WA 98601  
(360) 449-7800  
**FAX:** (360) 449-7801  
**TTY:** (360) 449-7802

**Mount St. Helens  
Visitor Center: Silver Lake**  
3029 Spirit Lake Highway  
Castle Rock, WA 98611  
24-hr. recording (360) 274-2103  
(360) 274-2100  
**FAX:** (360) 274-2101  
**TTY:** (360) 274-2102

**Coldwater Ridge Visitor Center**  
Located at MP 43  
(360) 274-2114  
**FAX:** (360) 274-2129  
**TTY:** (360) 274-2102

**Johnston Ridge Observatory**  
Located at MP 52  
(360) 274-2140

**Internet:**

[www.fs.fed.us/gpnf](http://www.fs.fed.us/gpnf)

## ***Your Recreation Fees Are Making A Difference***



On the Gifford Pinchot National Forest, money collected from the Recreation Fee Demonstration Program funded a wide range of visitor services during the past year. One of the key elements of this program is making sure that the funds collected pay for improvements where they were collected. Some of the projects accomplished with the [Northwest Forest Pass](#) and Cascade Volcano Pass fees were repair of the road leading to the Mt. Adams south climb, a new bridge on Trapper Creek Trail #192 (see photo above), construction of a turn around at the Berry Patch trailhead, work at Keenes Horse Camp, improvements at Goose Lake Campground, the Muddy Fork Trail Bridge replacement, restoration of the Government Mineral Springs Guard Station, waste removal program for Mt. Adams climbers, restroom cleaning, climber information services, a backlog of trail maintenance, and interpretive services at Mount St. Helens.

## ***Steve Nelson Ranger of the Year***



In recognition of his dedication and commitment to working with recreation partners, Steven M. Nelson, Lands and Special Uses Coordinator on the Gifford Pinchot National Forest, was selected by the [National Forest Recreation Association](#) (NFRA) as the 2002 "Ranger of the Year." Eric Mart and Scott Pineo, from Northwest Land Management who nominated Steve, assisted NFRA President Bob Coe in the presentation of the "Ranger of the Year" Award to Steve at the recent Association's 2002 Conference in Las Vegas, Nevada. (L-R in the photo, Steve N. and Bob C.)

## ***Spring Activities on Your National Forest***

**Free Days:** The Forest Service will waive the need for the [Northwest Forest Pass](#) on National Fishing Day, June 8 and Father's Day, June 16, 2002. However, simply visiting a national forest does not require a pass. Access to the national forests is free, and there are many free recreation sites.

**Pedal the Pinchot:** The fifth annual [Pedal the Pinchot](#) will be held this year on Saturday, July 20. For more information call 360-891-5151. Thanks again to Woodland Rotary Club for sponsoring this event.

**Fishing Clinics Planned:** The Forest will be hosting three Kids' Fishing Days on Saturday June 8 as part of its 14th annual observance of National Fishing Week. For a list of sites, call the Forest Headquarters at 360-891-5001 or visit the Forest website <http://www.fs.fed.us/gpnf> for more information.

**Wildflower Viewing:** Spring flowers are starting to show in many areas. Several wildflower walks are still scheduled for this spring, visit the Friends of the Gorge website at <http://www.gorgefriends.org/> for more information or call (503) 241-3762.

**Return Address:**

Gifford Pinchot National Forest  
10600 NE 51<sup>st</sup> Circle  
Vancouver, WA 98682