

A

Acid neutralizing capacity, definition of	31
Acre-foot, definition of	31
Adenosine triphosphate, definition of	31
Algae, definition of	
Blue-green, definition of	32
Fire, definition of	35
Green, definition of	35
Algal growth potential, definition of	31
Alkalinity, definition of	31
Allentown, Doctors Creek at	390
Annual 7-day minimum, definition of	31
Annual runoff, definition of	31
Aquifer, water table, definition of	44
Aroclor	31
Artificial substrate, definition of	31
Ash mass, definition of	31
Aspect, definition of	31
Assunpink Creek at Peace Street, at Trenton	381
Atsion, Mullica River at outlet of Atsion Lake, at . .	269

B

Babcock Creek near Mays Landing	293
Bacteria, definition of	31
Fecal streptococcal, definition of	35
Escherichia coli, definition of	34
Fecal coliform, definition of	35
Enterococcus, definition of	34
Total coliform, definition of	43
Bankfull stage, definition of	32
Barrett Run at Bridgeton	322
Base discharge, definition of	32
Base flow, definition of	32
Bass River, East Branch, near New Gretna	286
Batsto River at Batsto	281
Batsto, Mullica River at Constable Bridge, near . .	271
Bear Brook at Dark Moon Road, near Johnson- burg	341
Beaver Brook at Morris Avenue, at Denville	90
Beaver Brook at Rockaway	93
Beaver Dam Brook at Ryerson Road, at Lincoln Park	128
Bed load, definition of	32
Bed material, definition of	32
Bedload discharge, definition of	32
Belvidere, Pequest River at	347
Benthic organisms, definition of	32
Big Timber Creek, North Branch, at Glendora	416
Biochemical oxygen demand, definition of	32
Biomass pigment ratio, definition of	32
Biomass, definition of	32
Blacks Creek at Chesterfield	392
Blackwells Mills, Millstone River at	224
Blairstown, Paulins Kill at	338
Blue Anchor Brook at Elm	274
Blue-green algae, definition of	32
Bottom material, definition of	32
Bound Brook at Middlesex	235

Bound Brook at Route 28, at Middlesex	233
Bound Brook, Raritan River at Queens Bridge, at .	229
Bridgeton, Barrett Run at	322
Bulk electrical conductivity, definition of	32
Burnt Mills, Lamington River at	209

C

Capoolong Creek at Landsdowne	199
Cecil, Hospitality Branch at Blue Bell Road, near . .	289
Cedar Creek at Cedar Crest	267
Cedar Crest, Cedar Creek at	267
Cells volume, definition of	32
Cells/volume, definition of	32
Cfs-day, definition of	32
Chairville, Little Creek at	398
Channel bars, definition of	33
Chemical oxygen demand, definition of	33
Chesterfield, Blacks Creek at	392
Clayton, Still Run at Little Mill Road, near	309
Closter, Tenakill Brook at Old Closter Dock Road, at	76
Clostridium perfringens, definition of	33
Cohansey River at Seely	320
Coles Brook at Hackensack	79
Coliphages, definition of	33
Colonia, South Branch Rahway River at	189
Color unit, definition of	33
Confined aquifer, definition of	33
Contents, definition of	33
Continuous-record station, definition of	33
Control structure, definition of	33
Control, definition of	33
Cookstown, North Run at	384
Cooper River at Haddonfield	411
Cooper River, North Branch, at Kresson	413
Copper Hill, Third Neshanic River at	202
Crosswicks Creek at Groveville Road, at Groveville	387
Cubic foot per second per square mile, definition of	33
Cubic foot per second, definition of	33
Cubic foot per second-day, definition of	33

D

Daily mean suspended-sediment concentration, definition of	33
Daily-record station, definition of	33
Data collection platform, definition of	33
Data logger, definition of	33
Datum, definition of	33
Dead River near Millington	88
Delaware River at Lumberville, PA	355
Delaware River at Montague	325
Delaware River at Portland, PA	333
Delaware River at Riegelsville	351
Delaware River at Trenton	360
Dennis Creek Tributary 2 on Little Road, at Dennisville	303
Dennisville, Dennis Creek Tributary 2 on Little	

- Road, at. 303
Denville, Beaver Brook at Morris Avenue, at. 90
Diatom, definition of 33
Diel, definition of 34
Discharge, definition of 34
Dissolved oxygen, definition of. 34
Dissolved, definition of. 34
Dissolved-solids concentration, definition of 34
Diversity index, definition of 34
Doctors Creek at Allentown 390
Double Kill at Wawayanda 70
Double Trouble, Jakes Branch at Dover Road,
near 264
Drainage area, definition of. 34
Drainage basin, definition of 34
Dry mass, definition of 34
Dry weight, definition of 34
Dunnfield Creek at Dunnfield 329
Dunnfield, Dunnfield Creek at. 329
- E**
Earle, Mingamahone Brook near 254
East Branch Bass River near New Gretna. 286
Echo Lake, Macopin River at 100
Edwards Run at Jefferson. 424
Elm, Blue Anchor Brook at 274
Embeddedness, definition of 34
Enterococcus bacteria, definition of. 34
EPT Index, definition of 34
Escherichia coli (E. coli), definition of 34
Estell Manor, Tuckahoe River near 295
Estimated (E) concentration value, definition of 35
Euglenoids, definition of 35
Extractable organic halides, definition of 35
- F**
Fecal coliform bacteria, definition of 35
Fecal streptococcal bacteria, definition of 35
Fire algae, definition of 35
Fishing Creek at Rio Grande 301
Flat Brook at Flatbrookville 327
Flatbrookville, Flat Brook at 327
Flow, definition of 34
Flow-duration percentiles, definition of 35
Franklin, Wallkill River at Scott Road, at. 58
French Creek near Phoenixville, PA 418
Frenchtown, Nishisakawick Creek near 353
- G**
Gage datum, definition of 35
Gage height, definition of 35
Gage values, definition of 35
Gaging station, definition of 35
Garfield, Saddle River at. 178
Gas chromatography/flame ionization detector,
definition of 35
Geomorphic channel units, definition of 35
Glendora, North Branch Big Timber Creek at 416
Goffle Brook at Hawthorne 167
Gravelly Run at Laurel Lake. 317
Great Egg Harbor River at Weymouth 291
Green algae, definition of 35
Greenwood Branch at New Lisbon 406
Grovers Mill, Millstone River near 217
Groveville, Crosswicks Creek at Groveville Road,
at 387
- H**
Habitat quality index, definition of 36
Habitat, definition of. 35
Hackensack River at Rivervale 73
Hackensack, Coles Brook at 79
Haddonfield, Cooper River at. 411
Hammonton Creek at Wescoatville. 276
Hampton Gate, Skit Branch near. 278
Hannabrand Brook at Old Mill Road, near
Spring Lake Heights 248
Hardness, definition of. 36
Hawthorne, Goffle Brook at 167
Head of River, Tuckahoe River at. 298
Heathcote Brook at Kingston 219
High tide, definition of 36
Hilsenhoff's Biotic Index, definition of 36
Honey Run near Hope. 344
Hope, Honey Run near 344
Horizontal datum, definition of 36
Hospitality Branch at Blue Bell Road, near Cecil . . 289
Hydrologic index stations, definition of 36
Hydrologic unit, definition of. 36
- I**
Inch, definition of 36
Indian Branch near Malaga 312
Instantaneous discharge, definition of 36
Island, definition of. 36
- J**
Jakes Branch at Dover Road, near Double
Trouble 264
Jefferson, Edwards Run at. 424
Johnsonburg, Bear Brook at Dark Moon Road,
near. 341
Jumping Brook near Neptune City 245
- K**
Kingston, Heathcote Brook at 219
Kresson, North Branch Cooper River at. 413
- L**
Laboratory reporting level, definition of 36
Lafayette, Paulins Kill at Warbasse Junction Road,
near. 335
Lakewood, North Branch Metedeconk River at. . . . 256
Lamington River at Burnt Mills. 209
Land-surface datum, definition of 36
Lansdowne, Capoolong Creek at 199
Latent heat flux, definition of 36
Laurel Lake, Gravelly Run at 317
Lebanon State Forest, McDonalds Branch in 403
Leesburg, West Creek near 306

- Light-attenuation coefficient, definition of 36
- Lincoln Park, Beaver Dam Brook at Ryerson
Road, at 128
- Lipid, definition of 36
- Little Creek at Chairville. 398
- Little Falls, Passaic River at 160
- Little Neshaminy Creek at Valley Road, near
Neshaminy, PA 395
- Lodi, Saddle River at 170
- Long-term method detection level, definition of 36
- Low flow, 7-day 10-year, definition of 41
- Low tide, definition of 37
- Lumberville, PA, Delaware River at 355
- M**
- Macopin Intake Dam, Pequannock River at 103
- Macopin River at Echo Lake 100
- Macrophytes, definition of 37
- Mahwah, Ramapo River near 108
- Major Run at Sharptown 432
- Malaga, Indian Branch near 312
- Manalapan Brook at Federal Road, near
Manalapan 239
- Manalapan, Manalapan Brook at Federal Road,
near 239
- Manasquan River at Squankum 251
- Martinsville, West Branch Middle Brook at
Chimney Rock Road, at 226
- Maurice River at Norma 314
- Maxwell, West Branch Wading River at 284
- Mays Landing, Babcock Creek near 293
- McDonalds Branch in Lebanon State Forest 403
- Mean concentration of suspended sediment,
definition of 37
- Mean discharge, definition of 37
- Mean high tide, definition of 37
- Mean low tide, definition of 37
- Mean sea level, definition of 37
- Measuring point, definition of 37
- Membrane filter, definition of 37
- Mendham, Passaic River at Tempe Wick Road,
near 82
- Mercerville, Miry Run at Route 533, at 379
- Metamorphic stage, definition of 37
- Metedeconk River, North Branch, at Lakewood 256
- Method detection limit, definition of 37
- Methylene blue active substances, definition of 37
- Micrograms per gram, definition of 37
- Micrograms per kilogram, definition of 37
- Micrograms per liter, definition of 37
- Microsiemens per centimeter, definition of 37
- Middle Brook, West Branch, at Chimney Rock
Road, at Martinsville 226
- Middlesex, Bound Brook at 235
- Middlesex, Bound Brook at Route 28, at 233
- Milligrams per liter, definition of 37
- Millington, Dead River near 88
- Millstone River at Baird Road, near Perrineville 214
- Millstone River at Blackwells Mills 224
- Millstone River near Grovers Mill 217
- Mingamahone Brook near Earle 254
- Minimum reporting level, definition of 37
- Miry Run at Route 533, at Mercerville 379
- Miscellaneous site, definition of 37
- Miscellaneous sites, ground-water quality at 435
- Montague, Delaware River at 325
- Morristown National Historical Park, Primrose
Brook at 85
- Most probable number (MPN), definition of 37
- Mount Holly, North Branch Rancocas Creek at
Iron Works Park, at 408
- Mount Misery Brook at Upton 400
- Mulhockaway Creek at Van Syckel 196
- Mullica River at Constable Bridge, near Batsto 271
- Mullica River at outlet of Atsion Lake, at Atsion 269
- Multiple-plate samplers, definition of 37
- Musconetcong River at Riegelsville 349
- N**
- Nanograms per liter, definition of 38
- National Geodetic Vertical Datum of 1929,
definition of 38
- Natural substrate, definition of 38
- Nekton, definition of 38
- Nephelometric turbidity unit, definition of 38
- Neptune City, Jumping Brook near 245
- Neshaminy, PA, Little Neshaminy Creek at
Valley Road, near 395
- Neshanic River at Reaville 205
- New Gretna, East Branch Bass River near 286
- New Lisbon, Greenwood Branch at 406
- Newport, Spruce Run at 192
- Nishisakawick Creek near Frenchtown 353
- Norma, Maurice River at 314
- North American Vertical Datum of 1988,
definition of 38
- North Branch Big Timber Creek at Glendora 416
- North Branch Cooper River at Kresson 413
- North Branch Metedeconk River at Lakewood 256
- North Branch Rancocas Creek at Iron Works
Park, at Mount Holly 408
- North Branch Raritan River near Raritan 211
- North Run at Cookstown 384
- O**
- Oakhurst, Whale Pond Brook at Larchwood
Avenue, at 242
- Open or screened interval, definition of 38
- Organic carbon, definition of 38
- Organic mass, definition of 38
- Organism count, definition of
Area, definition of 38
Total, definition 43
Volume, definition of 38
- Organochlorine compounds, definition of 38

P

Papakating Creek at Pellettown	66
Papakating Creek near Wykertown	63
Parameter Code, definition of	38
Partial-record station, definition of	38
Particle size, definition of	38
Particle-size classification, definition of	38
Passaic River at Little Falls	160
Passaic River at Tempe Wick Road, near Mendham	82
Passaic River at Two Bridges	98
Passaic River below Pompton River, at Two Bridges	131
Paulins Kill at Blairstown	338
Paulins Kill at Warbasse Junction Road, near Lafayette	335
Peak flow, definition of	39
Pellettown, Papakating Creek at	66
Pequannock River at Macopin Intake Dam	103
Pequest River at Belvidere	347
Percent composition, definition of	39
Percent shading, definition of	39
Periodic station, definition of	39
Periphyton, definition of	39
Perrineville, Millstone River at Baird Road, near	214
Pesticides, definition of	39
pH, definition of	39
Philadelphia, PA, Schuylkill River at	421
Phoenixville, PA, French Creek near	418
Phytoplankton, definition of	39
Picocurie, definition of	39
Pine Brook, Whippany River near	95
Plankton, definition of	39
Polychlorinated biphenyls (PCB s), definition of	39
Polychlorinated naphthalenes, definition of	39
Pompton Lakes, Ramapo River at	111
Pompton Lakes, Wanaque River at Wanaque Avenue, at	105
Pompton Plains, Pompton River at	120
Pompton River at Pompton Plains	120
Pool, definition of	39
Portland, PA, Delaware River at	333
Primary productivity, definition of	39
Carbon method, definition of	39
Oxygen method, definition of	40
Primrose Brook at Morristown National Historical Park	85

R

Raccoon Creek near Swedesboro	427
Radioisotopes, definition of	40
Rahway River at Rahway	186
Rahway River near Springfield	184
Rahway River, South Branch, at Colonia	189
Rahway River, West Branch, at Northfield Avenue, at West Orange	181
Rahway, Rahway River at	186
Ramapo River at Pompton Lakes	111
Ramapo River near Mahwah	108

Rancocas Creek, North Branch, at Iron Works Park, at Mount Holly	408
Raritan River at Queens Bridge, at Bound Brook	229
Raritan River, North Branch, near Raritan	211
Raritan River, South Branch, at South Branch	207
Raritan, North Branch Raritan River near	211
Reach, definition of	40
Reaville, Neshanic River at	205
Recoverable from bottom material, definition of	40
Recurrence interval, definition of	40
Replicate samples, definition of	40
Return period, definition of	40
Riegelsville, Delaware River at	351
Riegelsville, Musconetcong River at	349
Riffle, definition of	40
Rio Grande, Fishing Creek at	301
River mileage, definition of	40
Rivervale, Hackensack River at	73
Rock Brook at Zion	221
Rockaway, Beaver Brook at	93
Run, definition of	40
Runoff, definition of	40

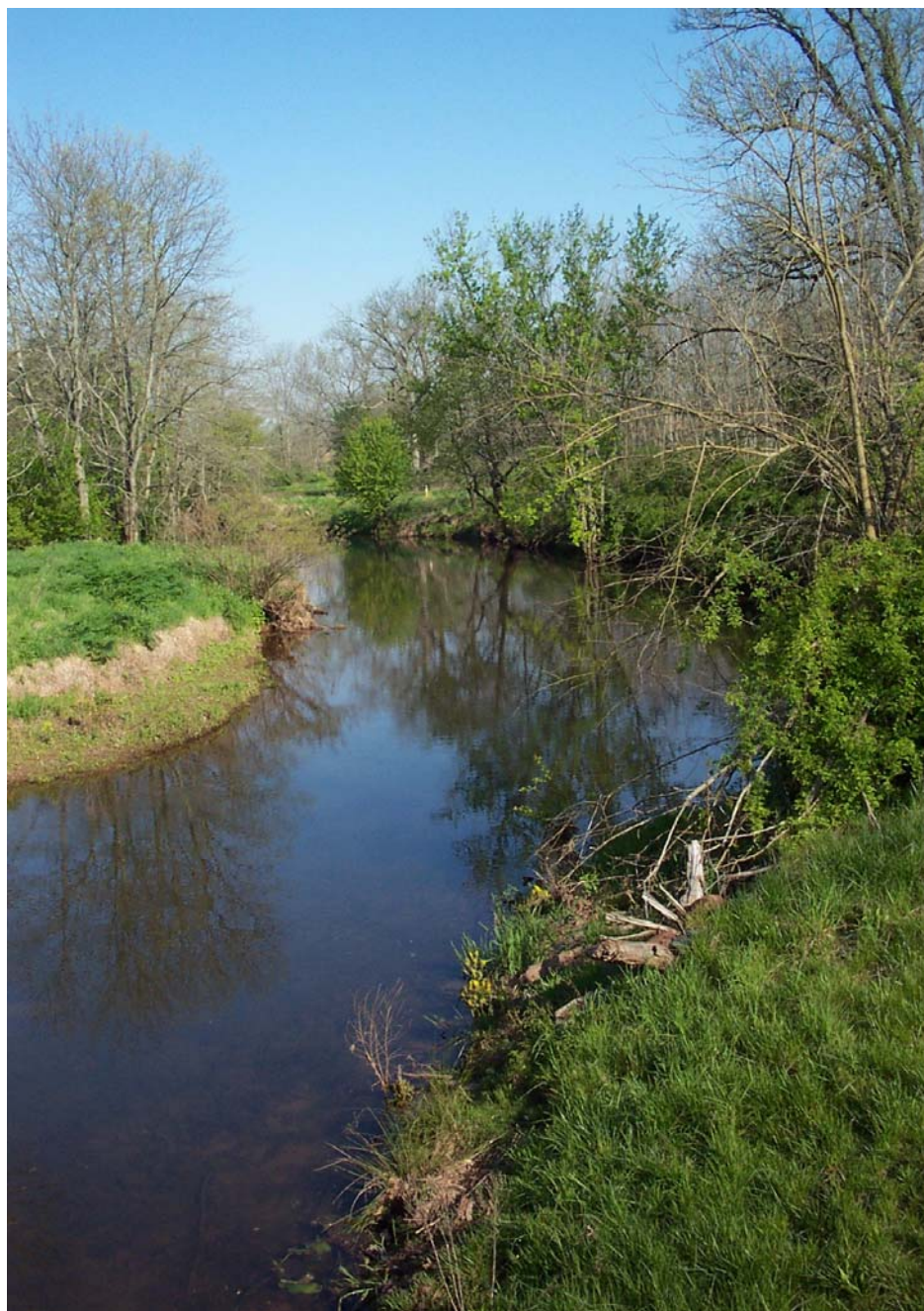
S

Saddle River at Garfield	178
Saddle River at Lodi	170
Salem River at Woodstown	430
Schuylkill River at Philadelphia, PA	421
Sea level, definition of	40
Sediment, definition of	40
Seely, Cohansey River at	320
Sensible heat flux, definition of	41
Sergeantsville, Wickecheoke Creek near	357
Sharptown, Major Run at	432
Shelves, definition of	41
Skit Branch near Hampton Gate	278
Sodium adsorption ratio, definition of	41
Soil heat flux, definition of	41
Soil-water content, definition of	41
South Branch Rahway River at Colonia	189
South Branch Raritan River at South Branch	207
South Branch, South Branch Raritan River at	207
Sparta, Walkkill River at	56
Specific electrical conductance, definition of	41
Spring Lake Heights, Hannabrand Brook at Old Mill Road, near	248
Springfield, Rahway River near	184
Spruce Run at Newport	192
Squankum, Manasquan River at	251
Stable isotope ratio, definition of	41
Stage (see gage height)	41
Stage-discharge relation, definition of	41
Still Run at Little Mill Road, near Clayton	309
Streamflow, definition of	41
Substrate embeddedness class, definition of	41
Substrate, definition of	41
Artificial, definition of	31
Natural, definition of	38

- Surface area of a lake, definition of 41
- Surficial bed material, definition of 41
- Suspended sediment, definition of 42
- Suspended solids, total residue at 105°C
concentration, definition of 42
- Suspended, definition of 41
- Recoverable, definition of 41
- Total, definition of 42
- Suspended-sediment concentration, definition of . . . 42
- Suspended-sediment discharge, definition of 42
- Suspended-sediment load, definition of 42
- Sussex, Wallkill River near 61
- Swedesboro, Raccoon Creek near 427
- Synoptic studies, definition of 42
- T**
- Taxa (Species) richness, definition of 42
- Taxonomy, definition of 42
- Tenakill Brook at Old Closter Dock Road, at
Closter 76
- Thalweg, definition of 42
- Thermograph, definition of 42
- Third Neshanic River at Copper Hill 202
- Time-weighted average, definition of 42
- Toms River at Whitesville 258
- Toms River near Toms River 261
- Tons per acre-foot, definition of 42
- Tons per day, definition of 43
- Total coliform bacteria, definition of 43
- Total discharge, definition of 43
- Total length, definition of 43
- Total load, definition of 43
- Total organism count, definition of 43
- Total recoverable, definition of 43
- Total sediment discharge, definition of 43
- Total sediment load, definition of 43
- Total, bottom material, definition of 43
- Total, definition of 43
- Transect, definition of 43
- Trenton, Assunpink Creek at Peace Street, at 381
- Trenton, Delaware River at 360
- Tuckahoe River at Head of River 298
- Tuckahoe River near Estell Manor 295
- Turbidity, definition of 43
- Two Bridges, Passaic River at 98
- Two Bridges, Passaic River below Pompton
River, at 131
- U**
- Ultraviolet (UV) absorbance (absorption),
definition of 44
- Unconfined aquifer, definition of 44
- Unionville, NY, Wallkill River near 68
- Upton, Mount Misery Brook at 400
- V**
- Van Syckel, Mulhockaway Creek at 196
- Vertical datum, definition of 44
- Volatile organic compounds, definition of 44
- W**
- Wading River, West Branch, at Maxwell 284
- Wallkill River at Scott Road, at Franklin 58
- Wallkill River at Sparta 56
- Wallkill River near Sussex 61
- Wallkill River near Unionville, NY 68
- Wanaque River at Wanaque Avenue, at
Pompton Lakes 105
- Water table, definition of 44
- Water year, definition of 44
- Water-table aquifer, definition of 44
- Wawayanda, Double Kill at 70
- WDR, definition of 44
- Weighted average, definition of 44
- Wescoatville, Hammonton Creek at 276
- West Branch Middle Brook at Chimney Rock
Road, at Martinsville 226
- West Branch Rahway River at Northfield
Avenue, at West Orange 181
- West Branch Wading River at Maxwell 284
- West Creek near Leesburg 306
- West Orange, West Branch Rahway River at
Northfield Avenue, at 181
- Wet mass, definition of 44
- Wet weight, definition of 44
- Weymouth, Great Egg Harbor River at 291
- Whale Pond Brook at Larchwood Avenue, at
Oakhurst 242
- Whippany River near Pine Brook 95
- Whitesville, Toms River at 258
- Wickecheoke Creek near Sergeantsville 357
- Woodstown, Salem River at 430
- WSP, definition of 44
- Wykertown, Papakating Creek near 63
- Z**
- Zion, Rock Brook at 221
- Zooplankton, definition of 44



01400640 Millstone River near Grovers Mill
Agricultural Land Use Indicator Station
Ambient Stream Monitoring Network
(file photograph, U.S. Geological Survey, West Trenton, New Jersey)



01398000 Neshanic River at Reaville
Agricultural Land Use Indicator Station
Ambient Stream Monitoring Network
(file photograph, U.S. Geological Survey, West Trenton, New Jersey)



01382000 Passaic River at Two Bridges
Watershed Integrator Station
Ambient Stream Monitoring Network
(file photograph, U.S. Geological Survey, West Trenton, New Jersey)

CONVERSION FACTORS AND DATUMS

Multiply	By	To obtain
<i>Length</i>		
inch (in.)	2.54×10^1	millimeter
	2.54×10^{-2}	meter
foot (ft)	3.048×10^{-1}	meter
mile (mi)	1.609×10^0	kilometer
<i>Area</i>		
acre	4.047×10^3	square meter
	4.047×10^{-1}	square hectometer
	4.047×10^{-3}	square kilometer
square mile (mi ²)	2.590×10^0	square kilometer
<i>Volume</i>		
gallon (gal)	3.785×10^0	liter
	3.785×10^0	cubic decimeter
	3.785×10^{-3}	cubic meter
million gallons (Mgal)	3.785×10^3	cubic meter
	3.785×10^{-3}	cubic hectometer
cubic foot (ft ³)	2.832×10^1	cubic decimeter
	2.832×10^{-2}	cubic meter
cubic-foot-per-second day [(ft ³ /s) d]	2.447×10^3	cubic meter
	2.447×10^{-3}	cubic hectometer
acre-foot (acre-ft)	1.233×10^3	cubic meter
	1.233×10^{-3}	cubic hectometer
	1.233×10^{-6}	cubic kilometer
<i>Flow</i>		
cubic foot per second (ft ³ /s)	2.832×10^1	liter per second
	2.832×10^1	cubic decimeter per second
	2.832×10^{-2}	cubic meter per second
gallon per minute (gal/min)	6.309×10^{-2}	liter per second
	6.309×10^{-2}	cubic decimeter per second
	6.309×10^{-5}	cubic meter per second
million gallons per day (Mgal/d)	4.381×10^1	cubic decimeter per second
	4.381×10^{-2}	cubic meter per second
<i>Mass</i>		
ton (short)	9.072×10^{-1}	megagram or metric ton

Horizontal coordinate information is referenced to the North American Datum of 1927 (NAD27), unless otherwise noted.

Vertical coordinate information is referenced to the National Geodetic Vertical Datum of 1929 (NGVD of 1929), unless otherwise noted.