

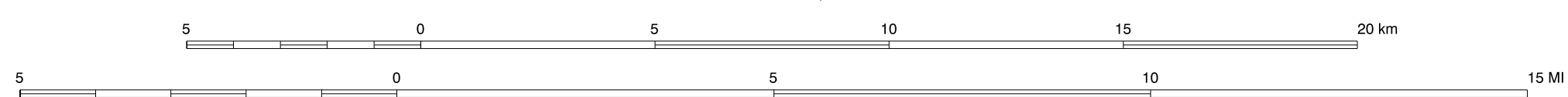
SUMMARY

Napa County was relatively unaffected by landsliding during the winter of 1997-98. Private property damage observed was limited to the loss of a front yard, several trees, and damage to a fence in the case of one home and to a driveway and gate in another. No homes were red- or yellow-tagged. "Tagged" structures are those that have been either condemned (red) or in need of significant repair (yellow). Municipal and county building inspection departments are commonly responsible for such determinations. The Napa County Road Department calculated estimates of costs of damage caused by landsliding. The total of \$1.1 million is for the repair of road surfaces and removal of debris. Most of the observed damage to the public transportation network was caused by small (generally less than 1,000 m²) rotational slump failures. Commonly these failures appeared to involve fill material. Redwood Road, Dry Creek Road, Oakville Grade, and Wood Valley Road were at one time reduced to one lane during the winter and spring of 1997-98.

EXPLANATION

- Location of damaging landslide. The number identifies the landslide in the database. Data on file with authors, USGS, Menlo Park, California and Golden, Colorado.

Scale 1:125,000



Universal Transverse Mercator Projection
Zone 10

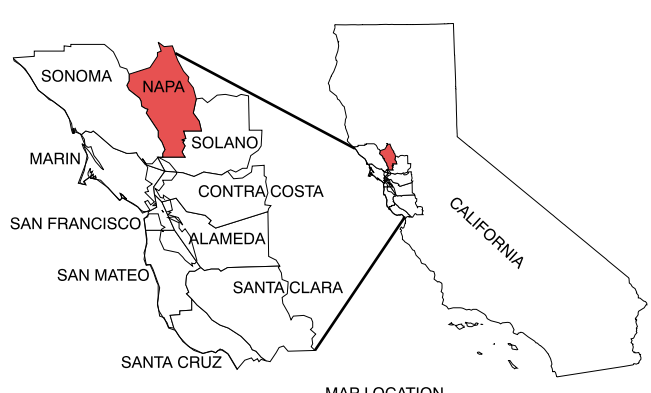


MAP SHOWING LOCATIONS OF DAMAGING LANDSLIDES IN NAPA COUNTY, CALIFORNIA, RESULTING FROM 1997-98 EL NIÑO RAINSTORMS

By

Jonathan W. Godt, William Z. Savage, and Raymond Wilson

1999



Digital data prepared using ARC/INFO 7.1.2 running under Solaris 2.6 on a UNIX workstation. Map formatted using Adobe Illustrator 8.0 running under Mac OS 8.6.

Shaded relief base derived from Graham, S.E., and Pike, R.J., 1997, Shaded Relief Map of the San Francisco Bay Region, California, U.S. Geological Survey Open-File Report 97-745-B.

Any use of trade, product or firm names is for descriptive purposes only and does not imply endorsement by the U.S. Government.

This project was supported in part by an appointment to the U.S. Geological Survey Earth Science Internship Program administered by Oak Ridge Associated Universities.

This map was produced on request, directly from digital files, on an electronic plotter. It is also available as a PDF file at <http://greenwood.cr.usgs.gov>

For sale by U.S. Geological Survey Information Services Box 25286, Federal Center, Denver, CO 80225.