

**The mission of the
Department of Human
Services:**

*Assisting people to become
independent, healthy and
safe.*

These arrows are shown
in each performance
measure and indicate the
direction of a positive
outcome, which may be
an increase or a
decrease, depending on
the measure.

GOOD



Please click on one of the links below for information related to that performance measure. DHS utilizes performance measure data to constantly strive toward improved outcomes for clients, whether we are currently meeting the goal or not. Performance measures serve as a key management tool to track areas of success and areas needing improvement.

Please note that the charts have the number 10000 in front of the performance measure number. This is the DHS agency number and indicates which agency owns a particular performance measure.

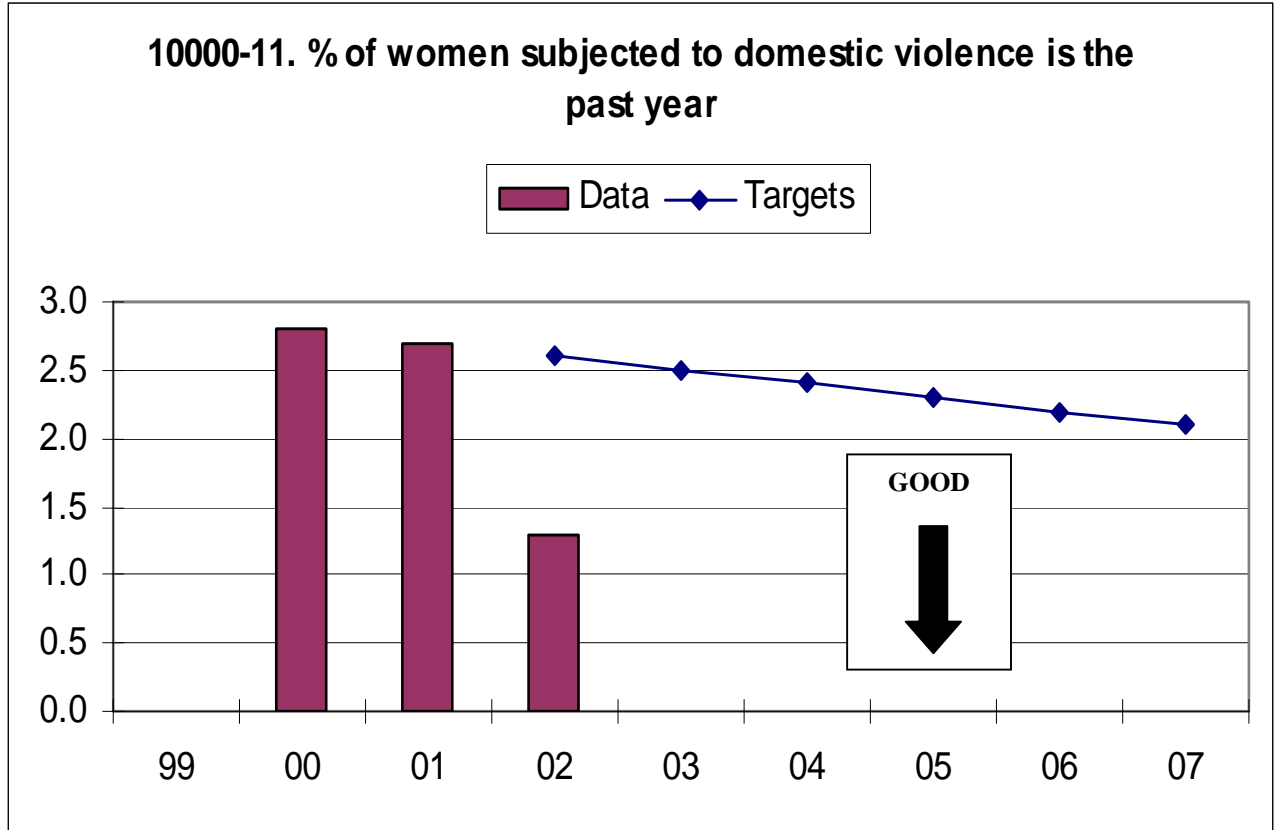
If you have questions about the information presented in this report, please contact Cathy Iles, DHS Performance Measure Coordinator, by phone at (503) 945-5855 or by e-mail at Cathy.F.Iles@state.or.us.

GOAL: PEOPLE ARE SAFE

11. [The percentage of women subjected to domestic violence in the past year.](#)
12. [The rate of suicides among adolescents per 100,000.](#)
13. [The median number of months from date of latest removal from home to finalized adoption.](#)
14. [The percentage of abused/neglected children who were re-abused within 6 months of prior victimization.](#)
15. [The percentage of seniors and adults with disabilities who are re-abused within 12 months of first substantiated abuse: a\) seniors \(developmental\), b\) people with disabilities.](#)

11. Percentage of women subjected to domestic violence in the past year.

<i>Did DHS meet or exceed the goal in the most recent year that data was available?</i>	YES
---	------------

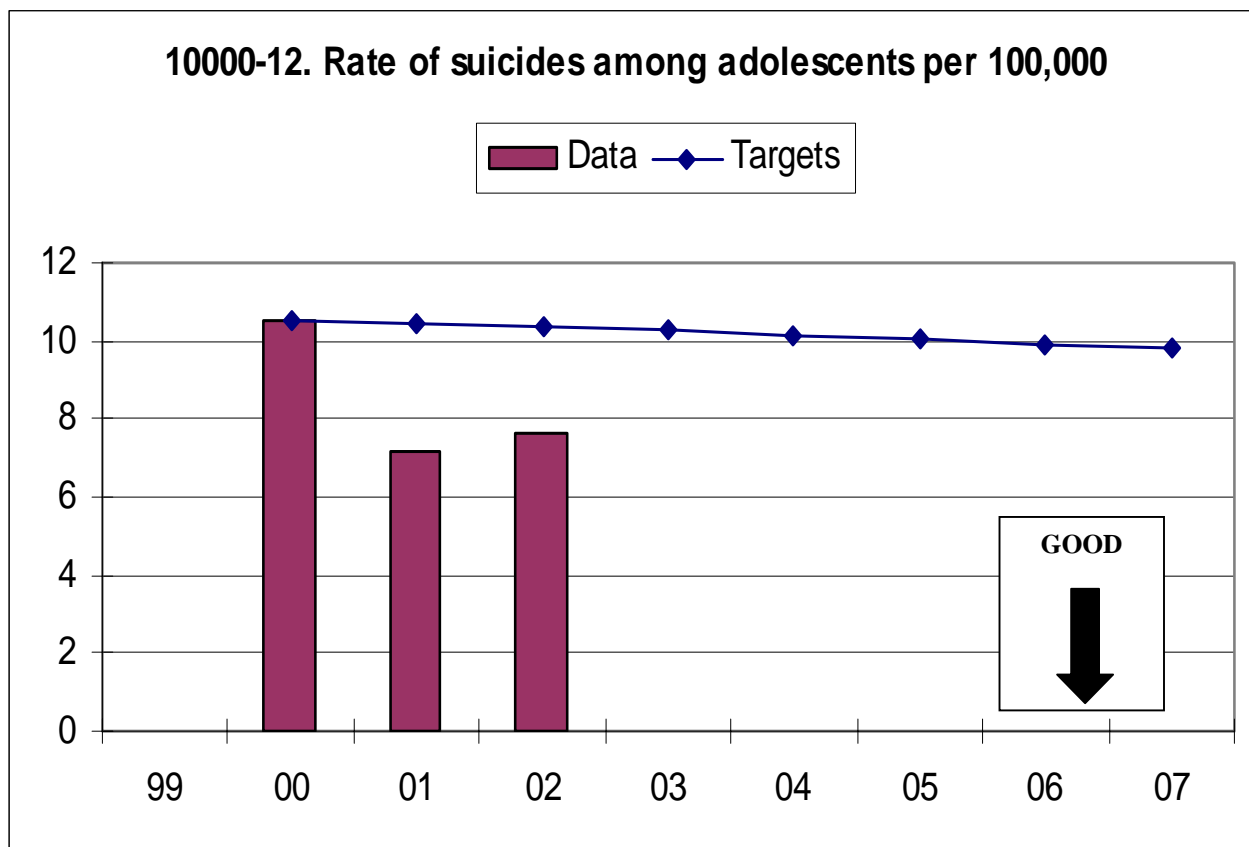


	1999	2000	2001	2002	2003	2004	2005	2006	2007
Target	NA	NA	NA	2.6	2.5	2.4	2.3	2.2	2.1
Data	NA	2.8	2.7	1.3					

[*Return to Performance Measure list*](#)

12. Rate of suicides among adolescents per 100,000.

<i>Did DHS meet or exceed the goal in the most recent year that data was available?</i>	YES
---	------------

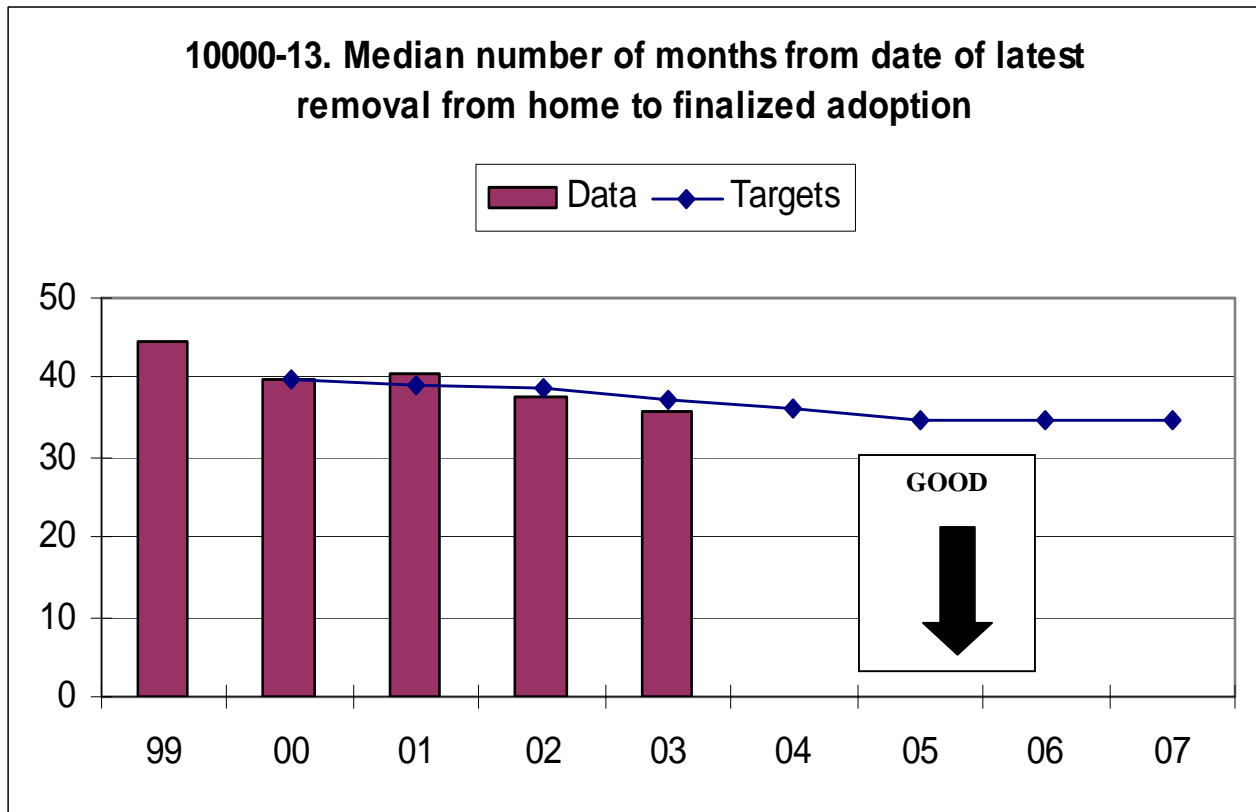


	1999	2000	2001	2002	2003	2004	2005	2006	2007
Target	NA	10.55	10.45	10.35	10.25	10.15	10.05	9.90	9.80
Data	NA	10.55	7.15	7.61					

[Return to Performance Measure list](#)

13. Median number of months from date of latest removal from home to finalized adoption.

<i>Did DHS meet or exceed the goal in the most recent year that data was available?</i>	YES
---	------------



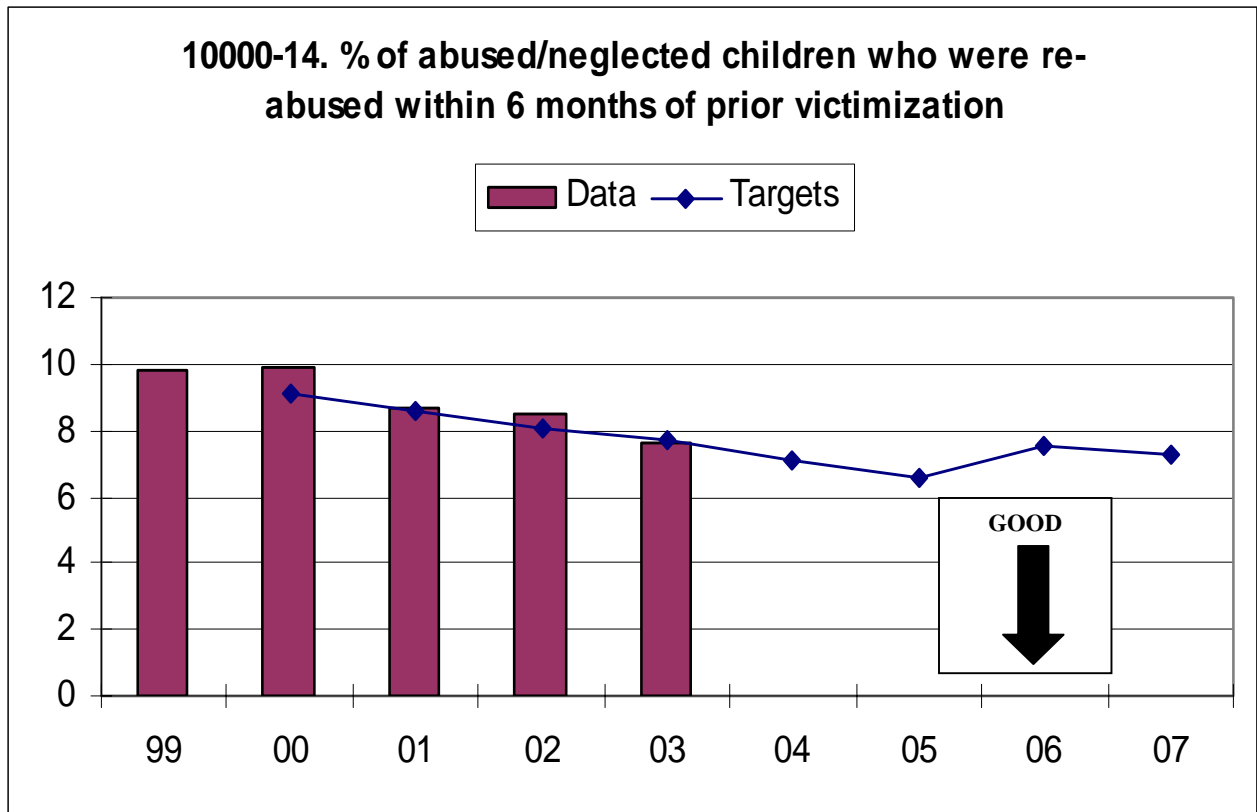
	1999	2000	2001	2002	2003	2004	2005	2006	2007
Target	NA	39.8	39.2	38.6	37.3	36.0	34.7	34.5	34.5
Data	44.6	39.8	40.6	37.7	35.8				

[County level data available for this performance measure. Click here!](#)

[Return to Performance Measure list](#)

14. Percentage of abused/neglected children who were re-abused within 6 months of prior victimization.

<i>Did DHS meet or exceed the goal in the most recent year that data was available?</i>	YES
---	------------



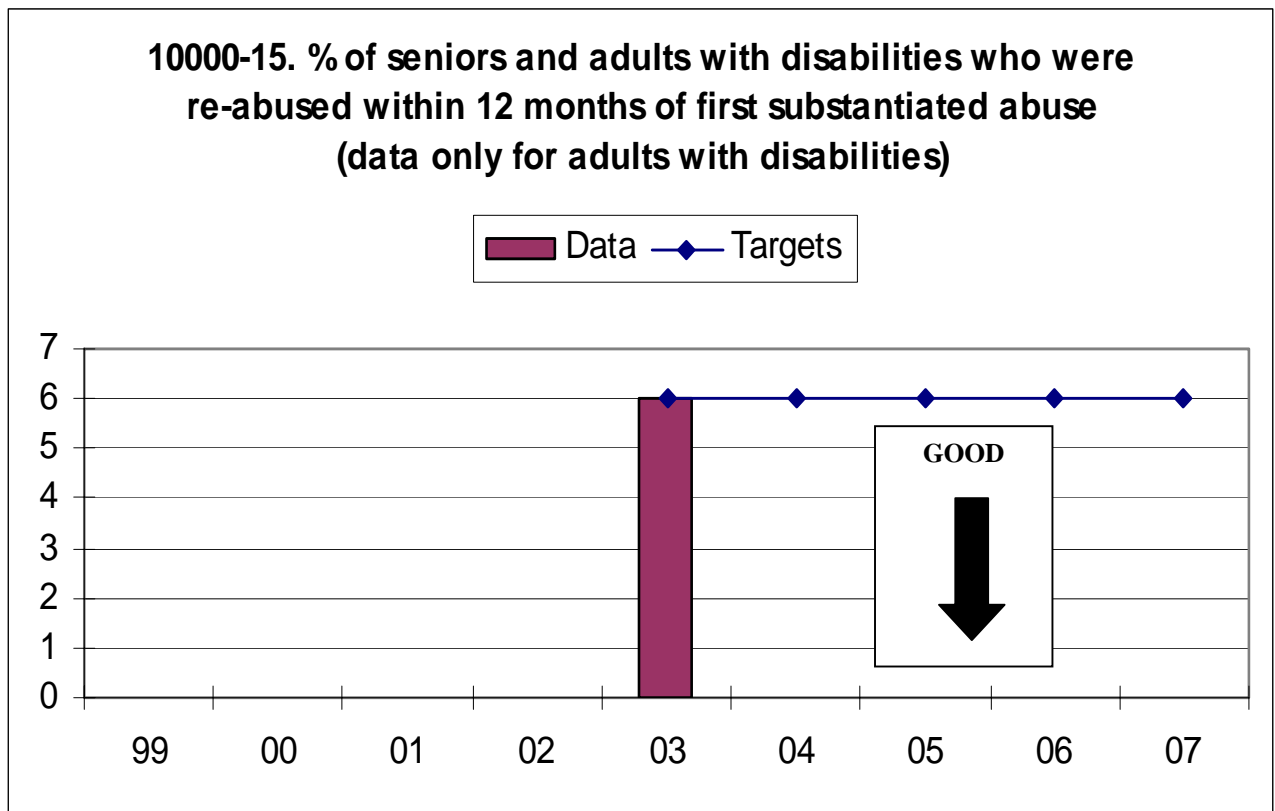
	1999	2000	2001	2002	2003	2004	2005	2006	2007
Target	NA	9.1	8.6	8.1	7.7	7.1	6.6	7.5	7.3
Data	9.8	9.9	8.7	8.5	7.6				

County level data available for this performance measure. [Click here!](#)

[Return to Performance Measure list](#)

15. Percentage of seniors and adults with disabilities who are re-abused within 12 months of first substantiated abuse. (Data for persons with disabilities only)

<i>Did DHS meet or exceed the goal in the most recent year that data was available?</i>	YES
---	------------



	1999	2000	2001	2002	2003	2004	2005	2006	2007
Target	NA	NA	NA	NA	6.0	6.0	6.0	6.0	6.0
Data	NA	NA	NA	NA	6.0				

[*Return to Performance Measure list*](#)

Oregon Dept. of Human Services KEY PERFORMANCE MEASURE #13

The median number of months from date of latest removal from home to finalized adoption. (This performance measure related to abused/neglected children in state custody).

	FFY 2003	FFY 2004
Target	37.3	36.0
Statewide Total	35.8	NA
Baker	34.3	26.2
Benton	28.6	36.5
Clackamas	33.6	41.1
Clatsop	29.4	29.5
Columbia	34.7	39.3
Coos	33.4	37.7
Crook	NA	30.8
Curry	16.3	23.8
Deschutes	36.7	55.9
Douglas	44.7	36.1
Gilliam	NA	NA
Grant	41.0	17.5
Harney	81.0	67.8
Hood River	40.0	NA
Jackson	26.6	36.6
Jefferson	44.1	28.9
Josephine	51.6	47.8
Klamath	41.1	37.5
Lake	26.2	20.7
Lane	32.7	35.7
Lincoln	39.5	39.3
Linn	35.2	43.7
Malheur	34.6	41.3
Marion	35.8	36.8
Morrow	70.8	19.9
Multnomah	36.9	39.1
Polk	36.4	42.5
Tillamook	NA	31.0
Umatilla	38.5	50.8
Union	30.8	54.3
Wallowa	34.6	NA
Wasco-Sherm.	32.3	35.8
Washington	45.9	41.4
Wheeler	NA	NA
Yamhill	44.3	40.9

Oregon Dept. of Human Services KEY PERFORMANCE MEASURE #14

The percentage of abused/neglected children who were re-abused within 7 months of prior victimization.

	FFY 2000	FFY 2001	FFY 2002	FFY 2003
Target	9.1	8.6	8.1	7.7
Statewide Total	9.9	8.7	8.5	7.6
Baker	7.5%	9.2%	5.2%	10.0%
Benton	5.3%	4.5%	12.1%	9.3%
Clackamas	5.1%	4.2%	6.1%	2.6%
Clatsop	10.0%	14.9%	3.2%	14.2%
Columbia	3.7%	6.4%	0.0%	3.5%
Coos	20.3%	12.0%	15.0%	8.7%
Crook	11.8%	5.7%	2.8%	5.0%
Curry	6.3%	10.4%	8.2%	2.9%
Deschutes	6.0%	10.7%	5.8%	8.3%
Douglas	15.7%	9.8%	13.9%	10.5%
Gilliam	20.0%	0.0%	37.5%	7.7%
Grant	12.5%	4.2%	19.4%	13.8%
Harney	7.0%	0.0%	14.3%	16.2%
Hood River	5.9%	0.0%	2.0%	5.7%
Jackson	8.5%	8.4%	11.0%	11.8%
Jefferson	0.0%	11.1%	6.8%	4.4%
Josephine	6.8%	3.7%	4.8%	4.9%
Klamath	14.3%	8.1%	16.3%	10.8%
Lake	7.4%	7.7%	5.9%	2.6%
Lane	15.6%	13.8%	11.0%	8.0%
Lincoln	10.4%	13.0%	9.7%	11.4%
Linn	8.1%	7.0%	5.7%	12.7%
Malheur	6.1%	7.3%	8.7%	4.4%
Marion	9.6%	6.9%	9.4%	8.7%
Morrow	8.0%	7.4%	8.2%	15.5%
Multnomah	10.5%	7.9%	7.4%	7.3%
Polk	7.8%	1.6%	4.5%	1.6%
Tillamook	5.3%	6.0%	11.1%	8.5%
Umatilla	9.7%	9.4%	12.3%	7.6%
Union	10.6%	9.2%	9.2%	9.8%
Wallowa	16.7%	6.7%	0.0%	0.0%
Wasco-Sherm.	10.7%	8.3%	13.0%	7.9%
Washington	6.1%	5.2%	4.3%	6.7%
Wheeler	0.0%	14.3%	0.0%	0.0%
Yamhill	7.6%	8.4%	9.8%	2.8%