







Appendix I



















Geophysical Log Descriptions

EXPLANATION

High-Frequency Cycles

 HFC5	 HFC3b	 HFC2
 HFC4	 HFC3a	 HFC1?

Rock-Fabric Facies

 Peloid grainstone/ packstone	 Mudstone/wackestone	 Sandy pelecypod floatstone/rudstone
 Coral framestone	 Root-mold limestone	 Touching vug pelecypod floatstone/rudstone
 Peloid wackestone/ packstone	 Skeletal grainstone/ packstone	 Sandy pelecypod floatstone/rudstone
 Gastropod floatstone/ rudstone	 Sandy skeletal grainstone/packstone	 Vuggy wackestone packstone
 Conglomerate	 Laminated peloid grainstone/packstone	 Quartz sandstone
 Pedogenic limestone	 Pelecypod floatstone/ rudstone	 Skeletal sandstone

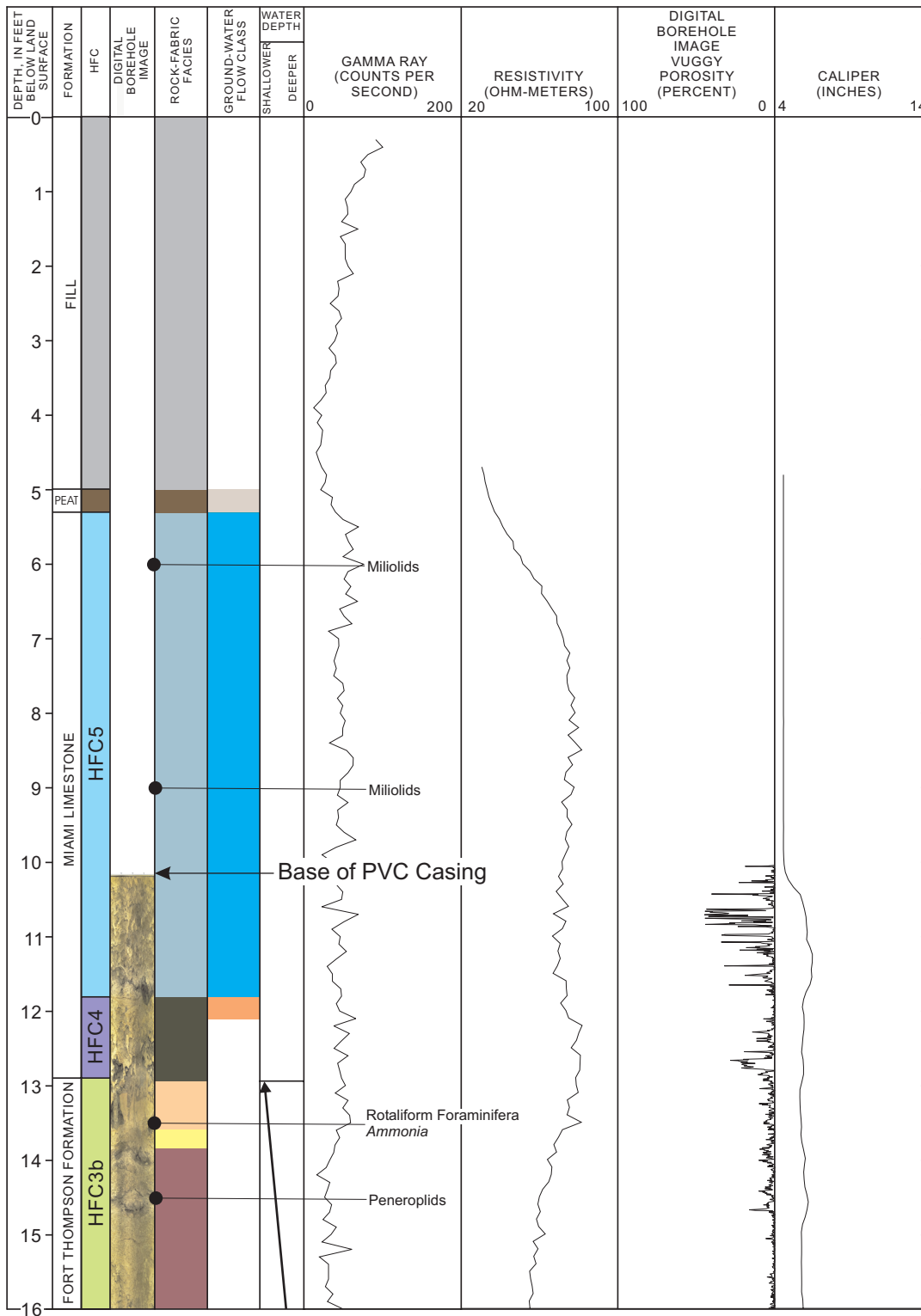
Miscellaneous

 Fill
 Peat
 Marl
 No recovery

Ground-Water Flow Class

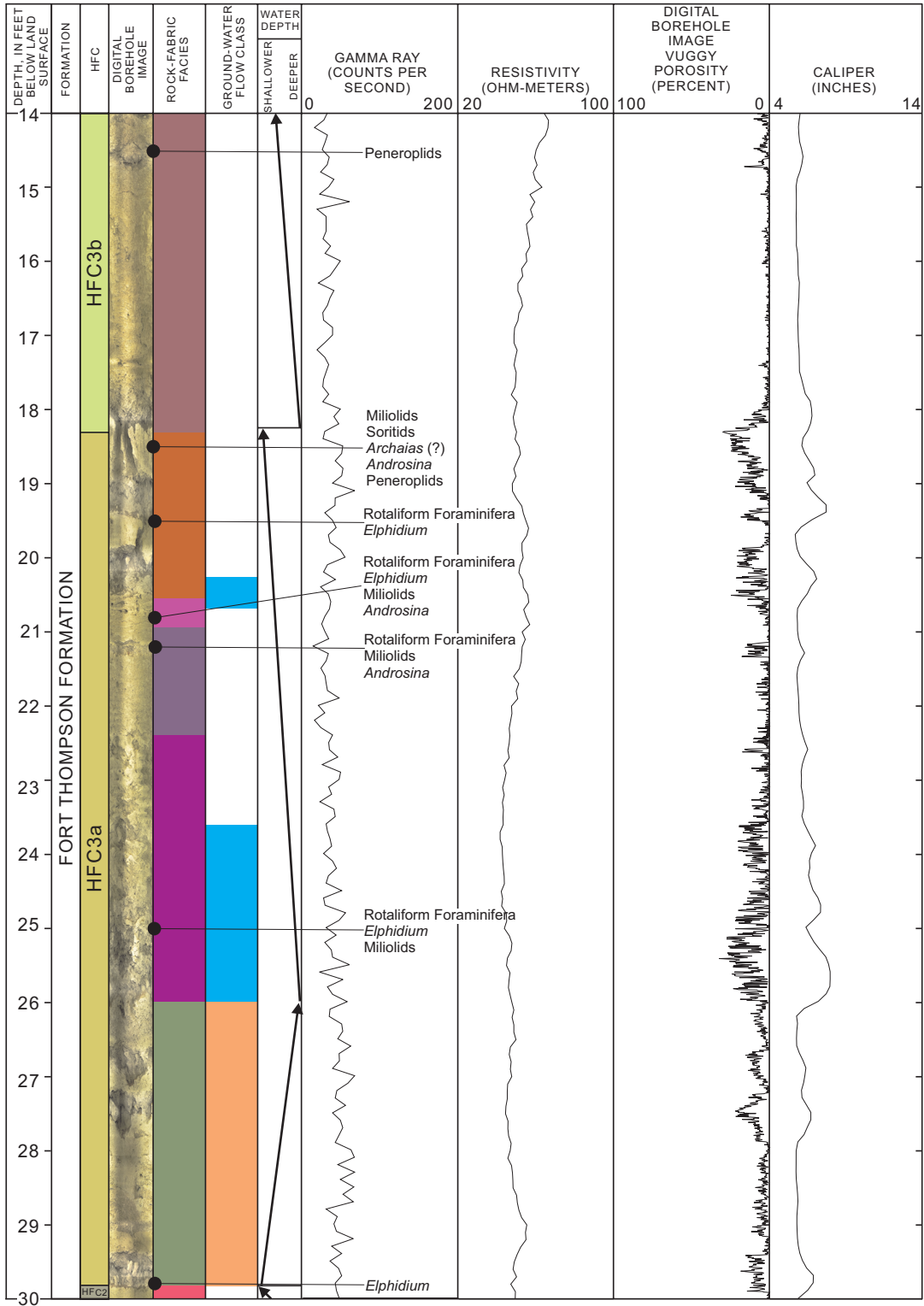
 Low permeability peat, muck, and marl	 Lateral conduit flow zone	 Leaky low permeability zone	 Diffuse flow zone
--	--	--	---

G-3671



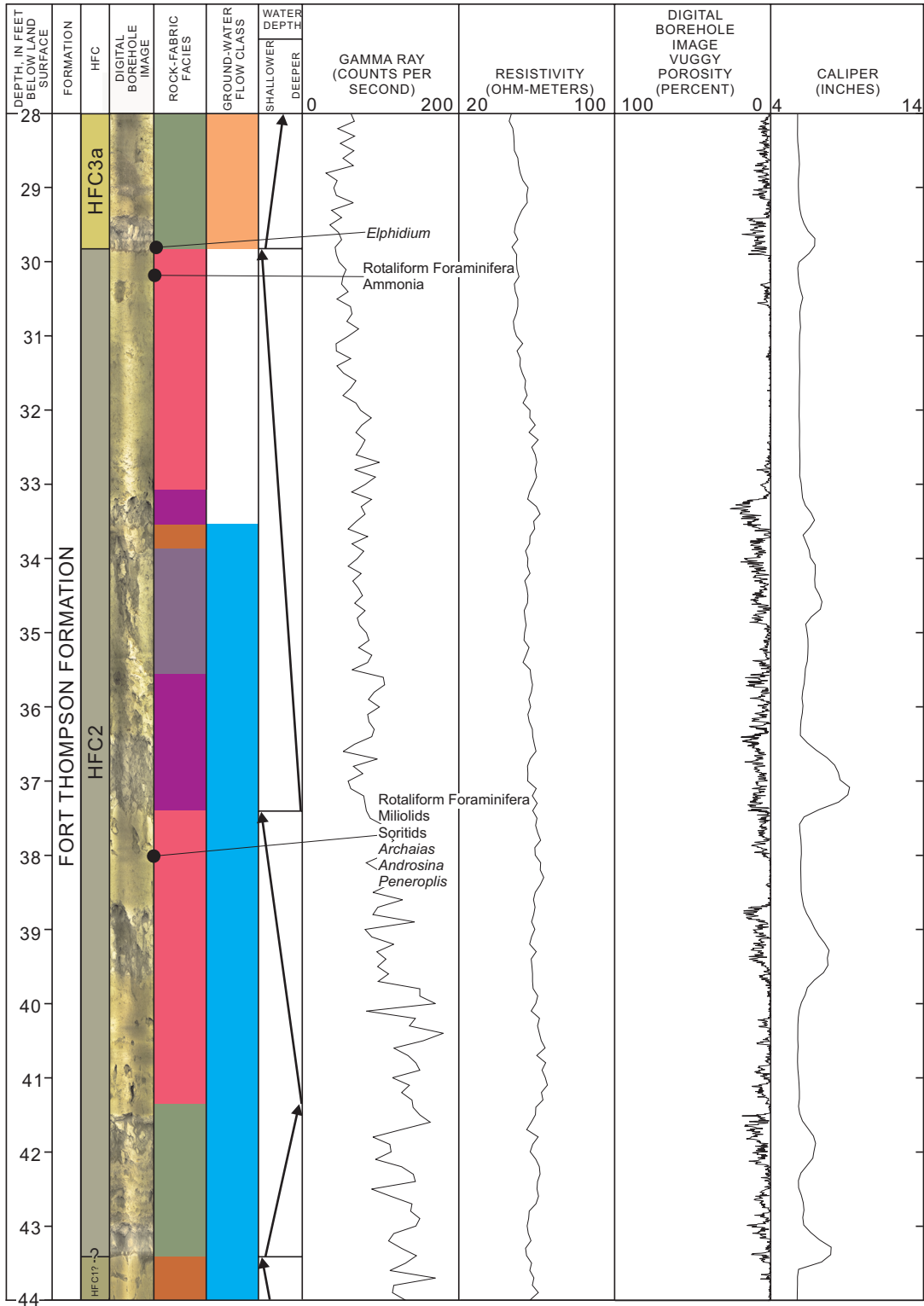
G-3671 (0-16 feet below land surface)

G-3671



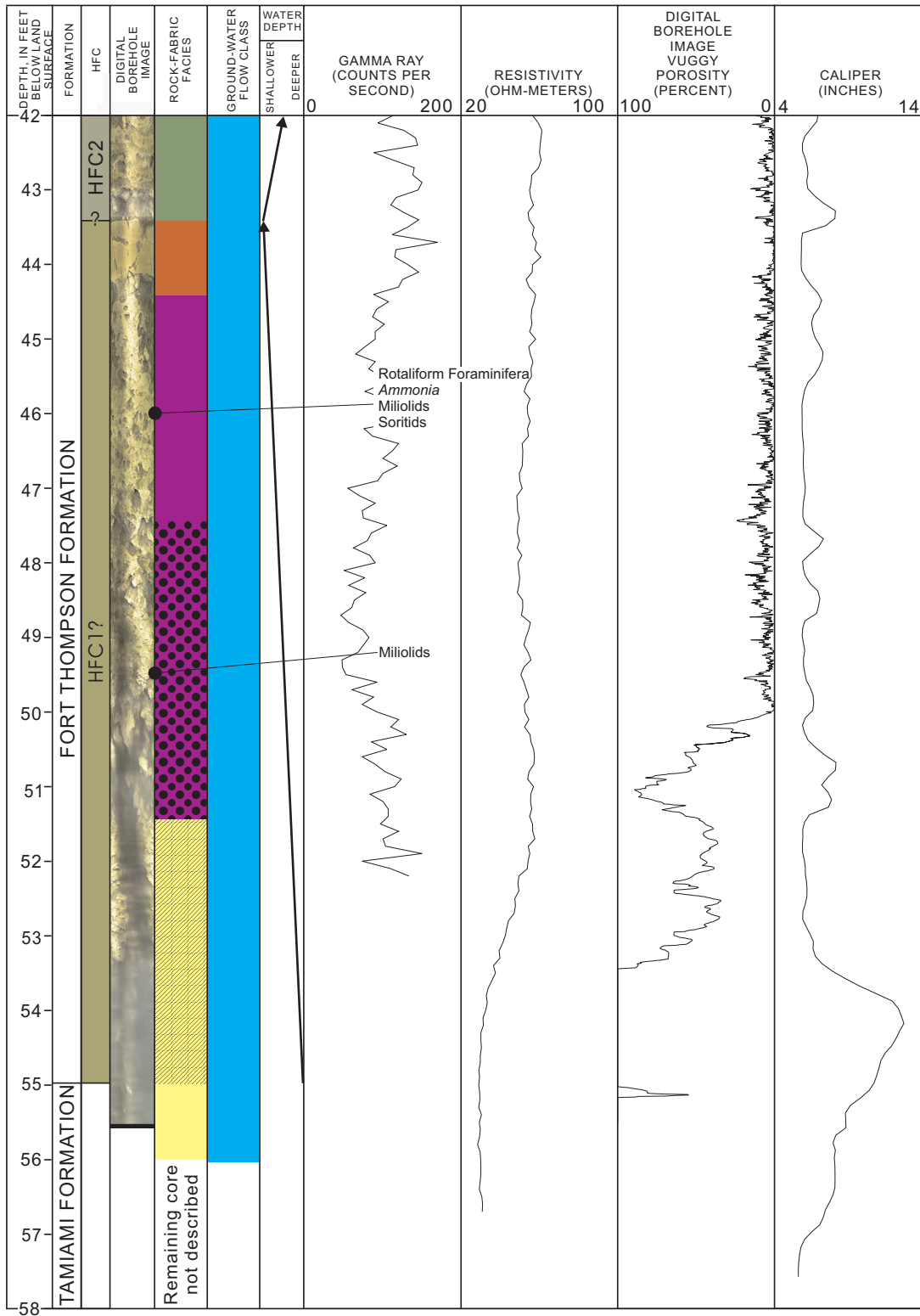
G-3671 (14-30 feet below land surface)

G-3671



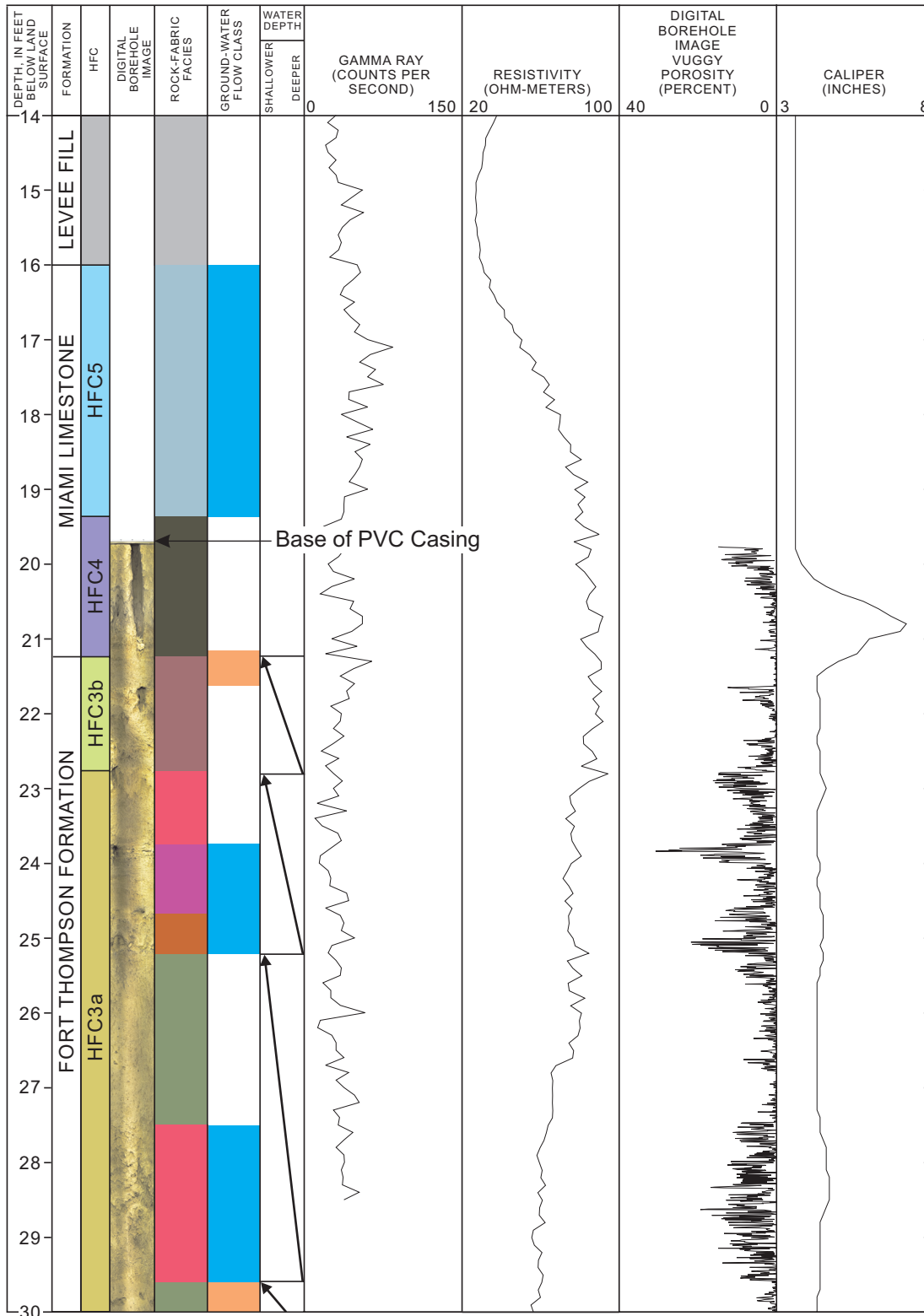
G-3671 (28-44 feet below land surface)

G-3671



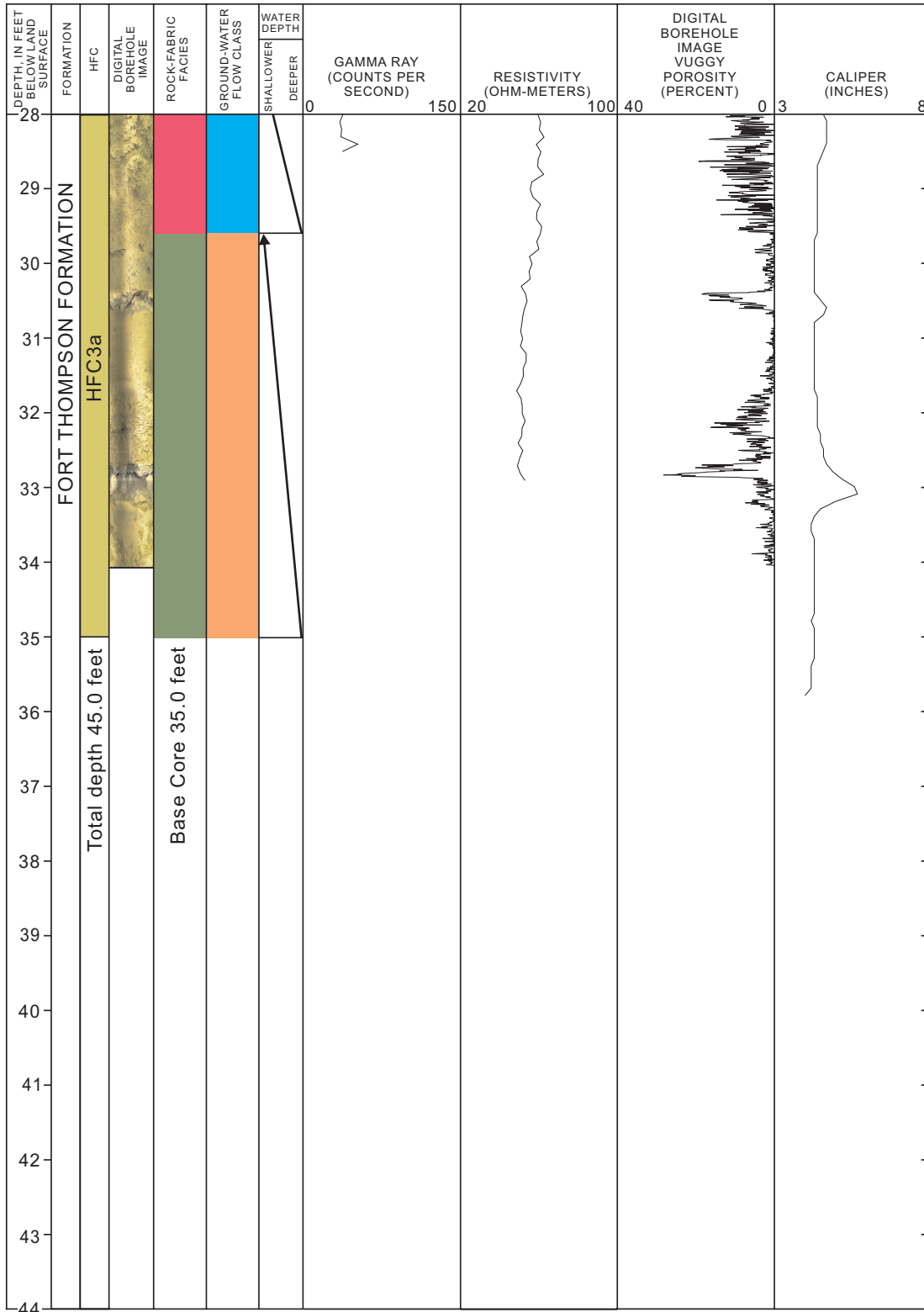
G-3671 (42-58 feet below land surface)

G-3672



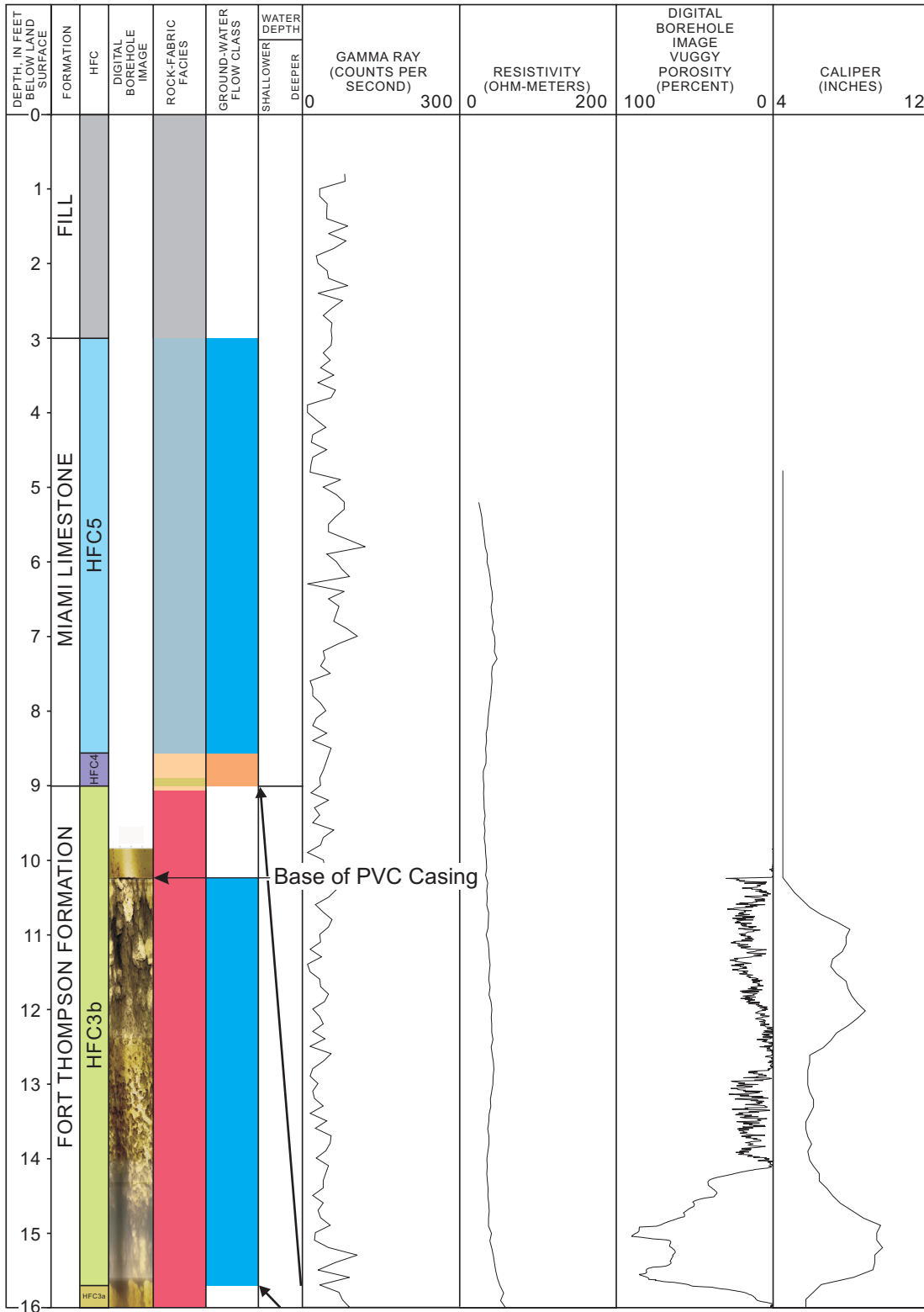
G-3672 (14-30 feet below top of levee land surface)

G-3672



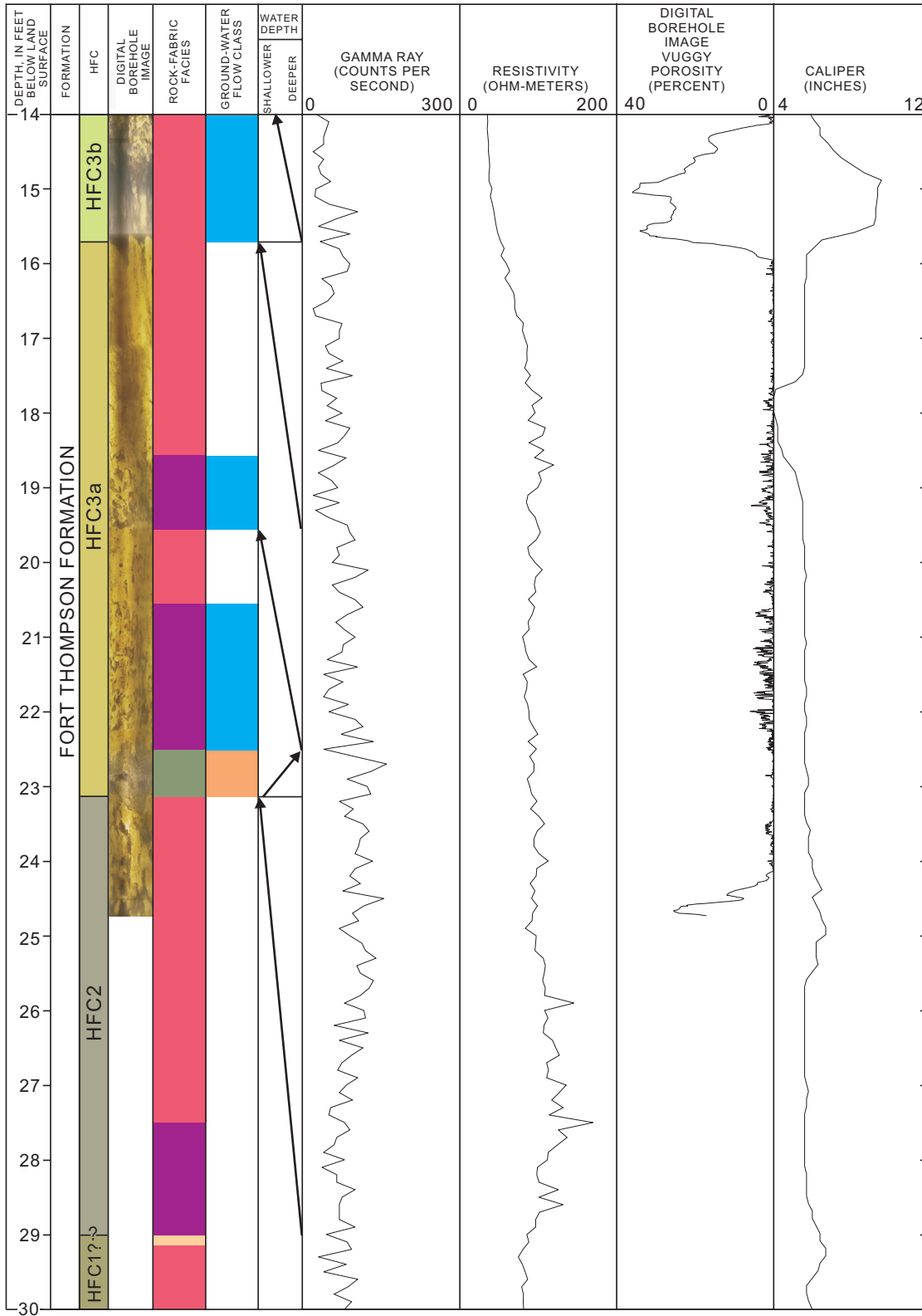
G-3672 (28-44 feet below top of levee land surface)

G-3674



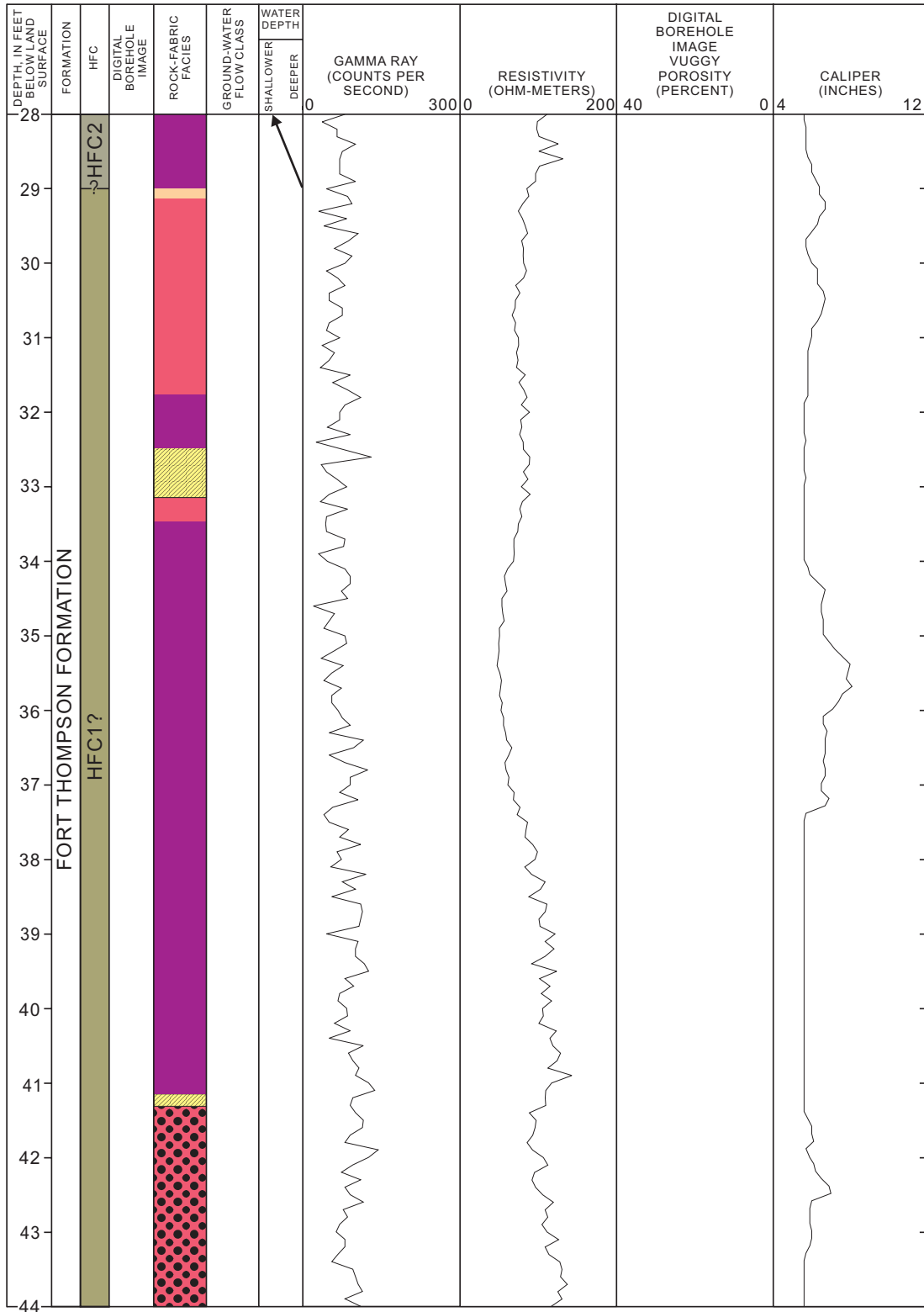
G-3674 (0-16 feet below land surface)

G-3674



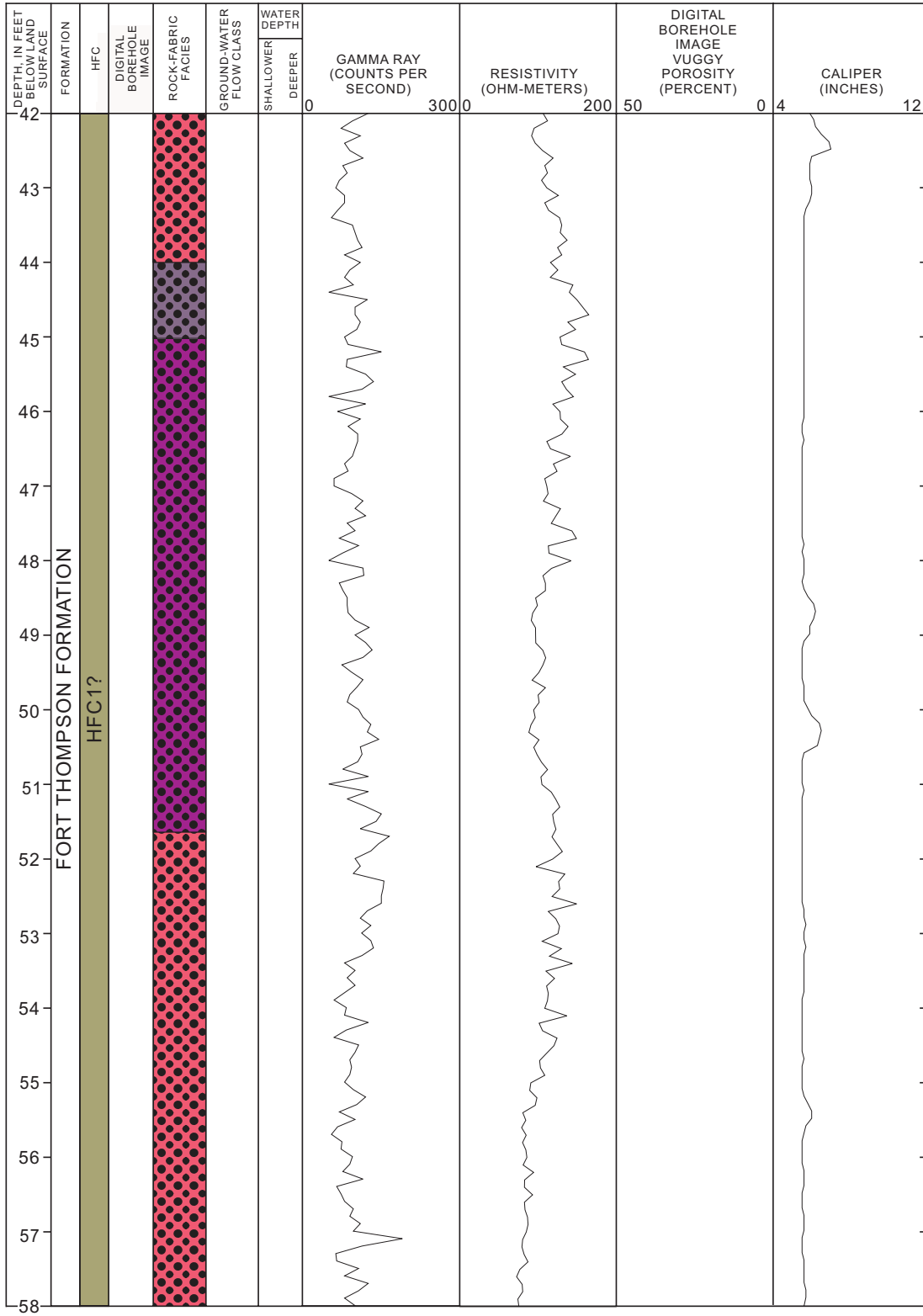
G-3674 (14-30 feet below land surface)

G-3674



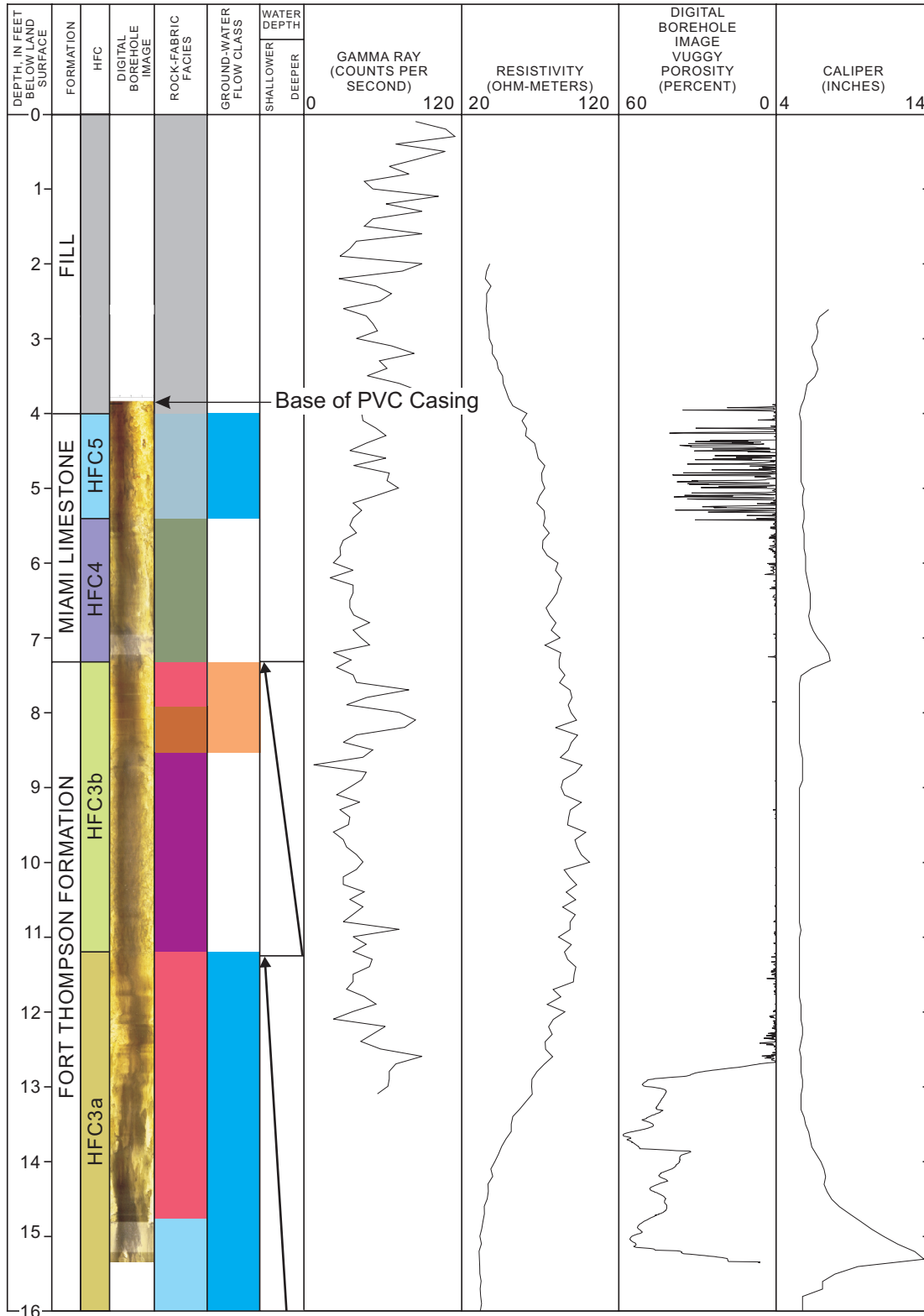
G-3674 (28-44 feet below land surface)

G-3674



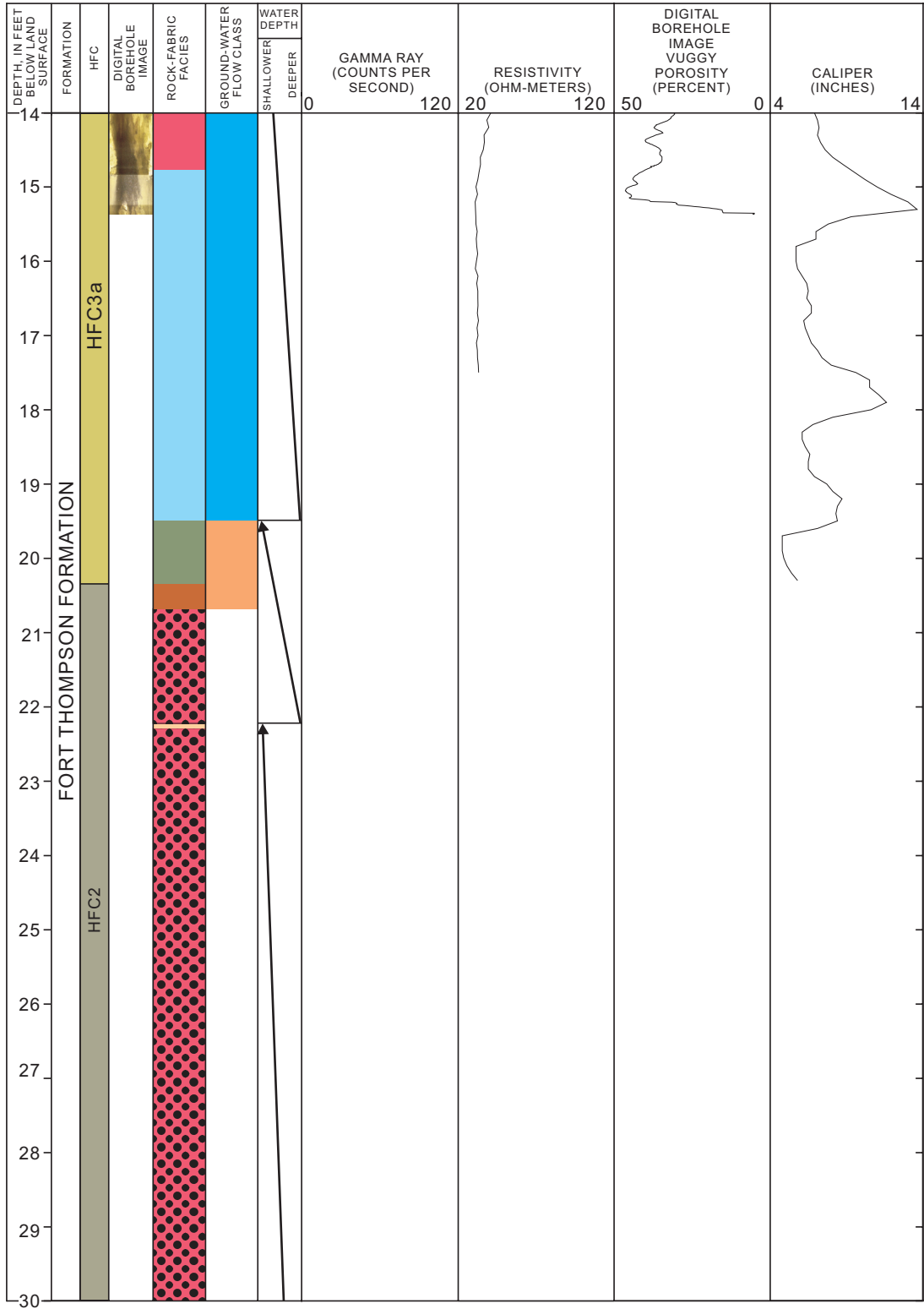
G-3674 (42-58 feet below land surface)

G-3675



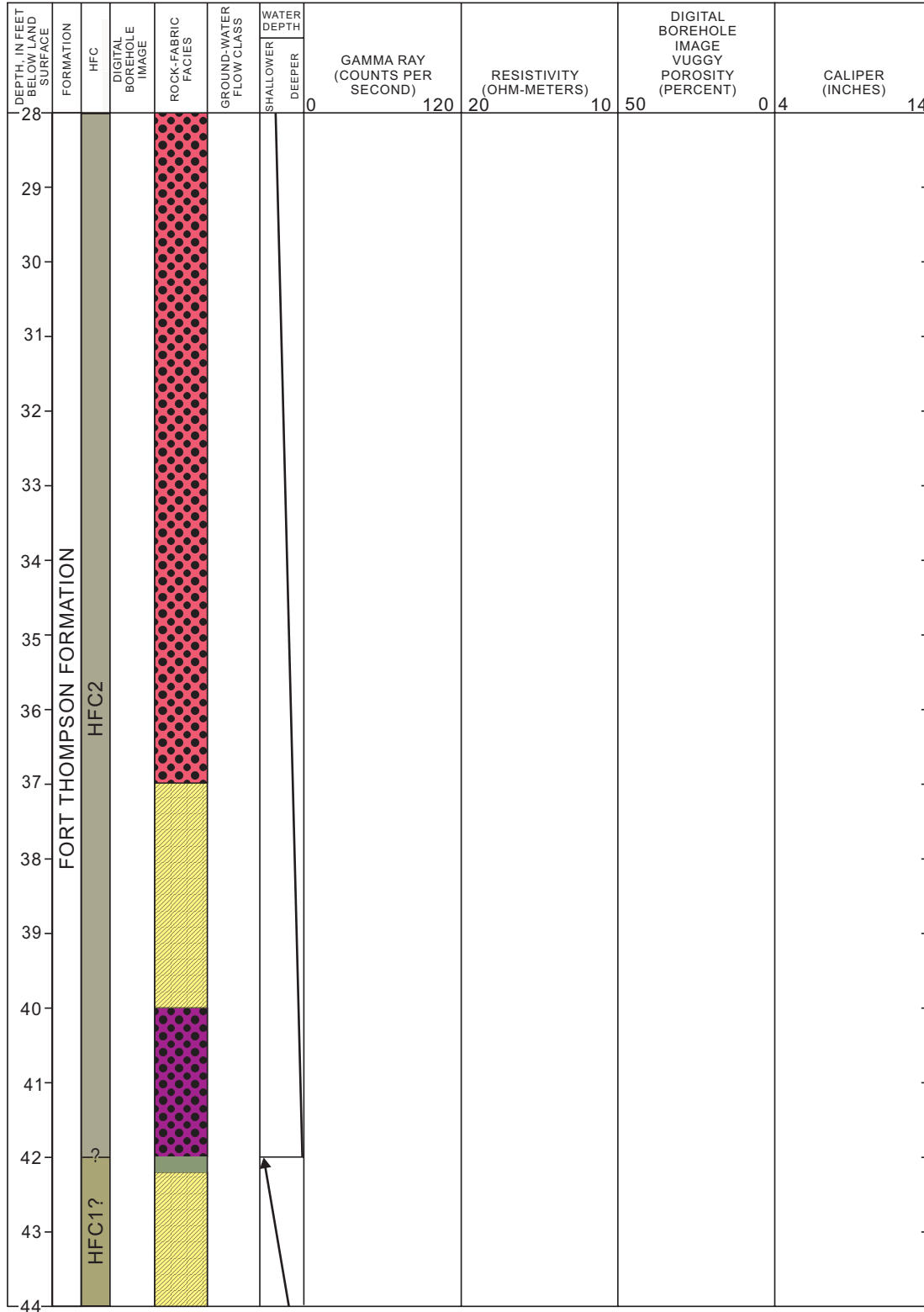
G-3675 (0-16 feet below land surface)

G-3675



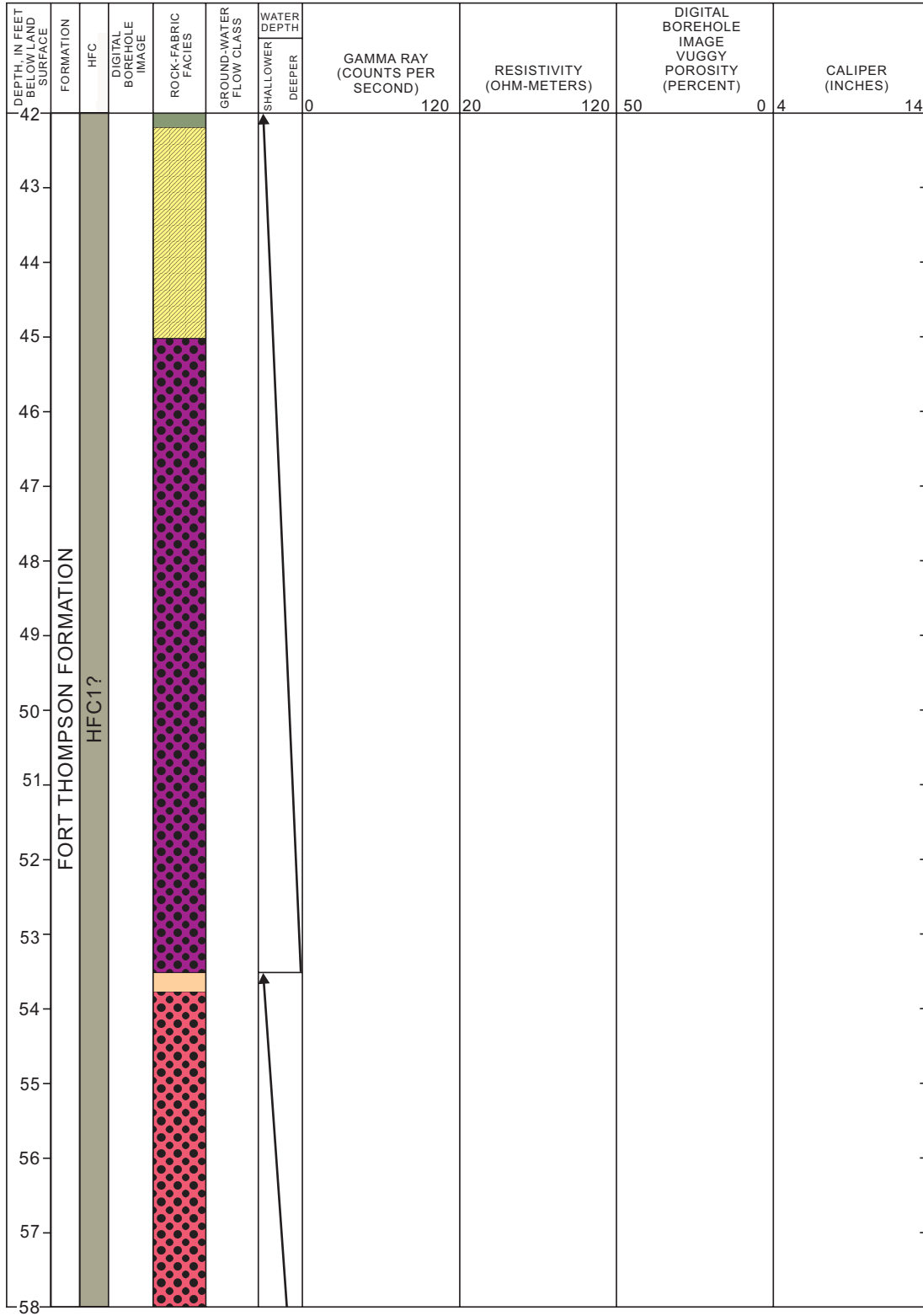
G-3675 (14-30 feet below land surface)

G-3675



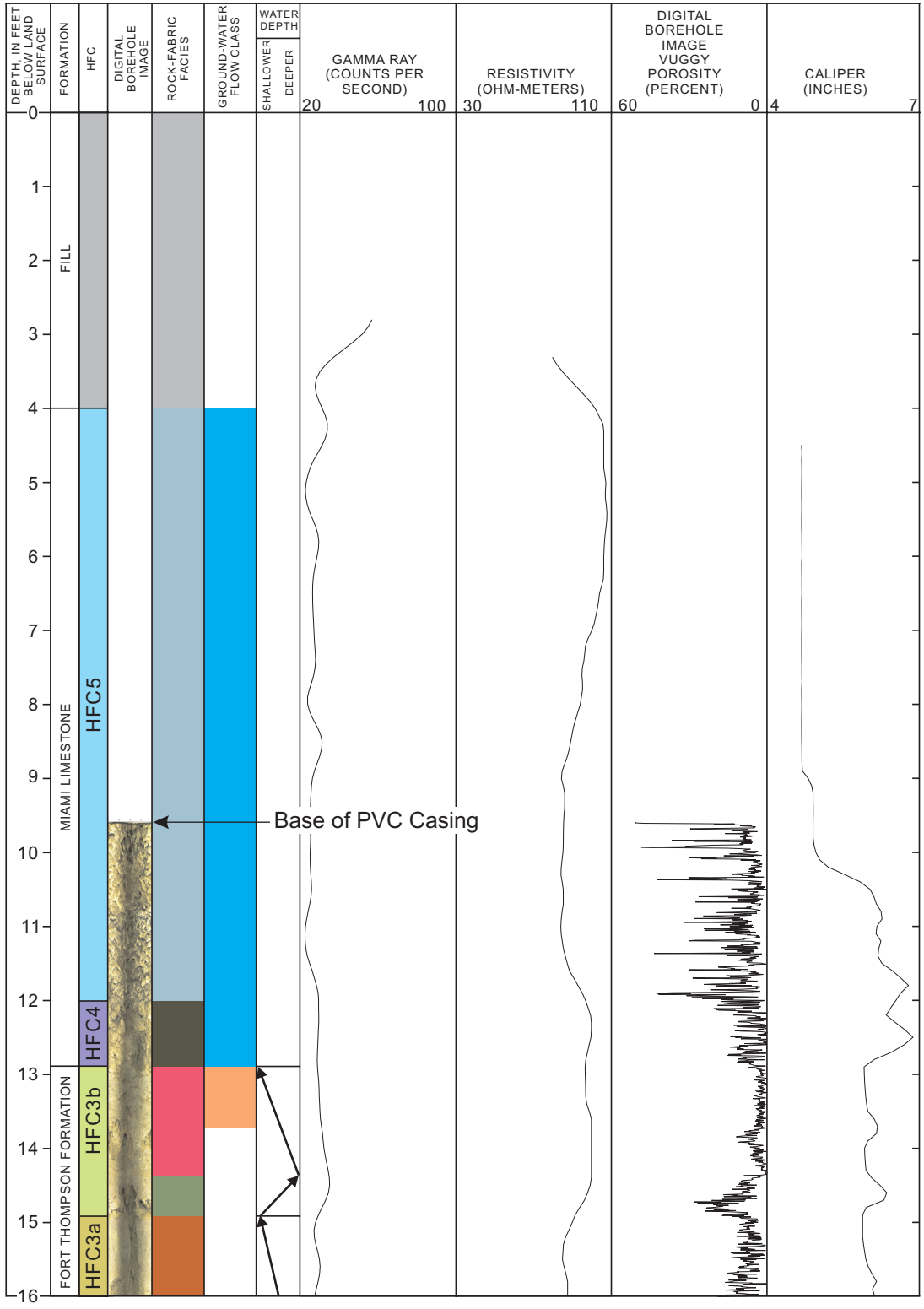
G-3675 (28-44 feet below land surface)

G-3675



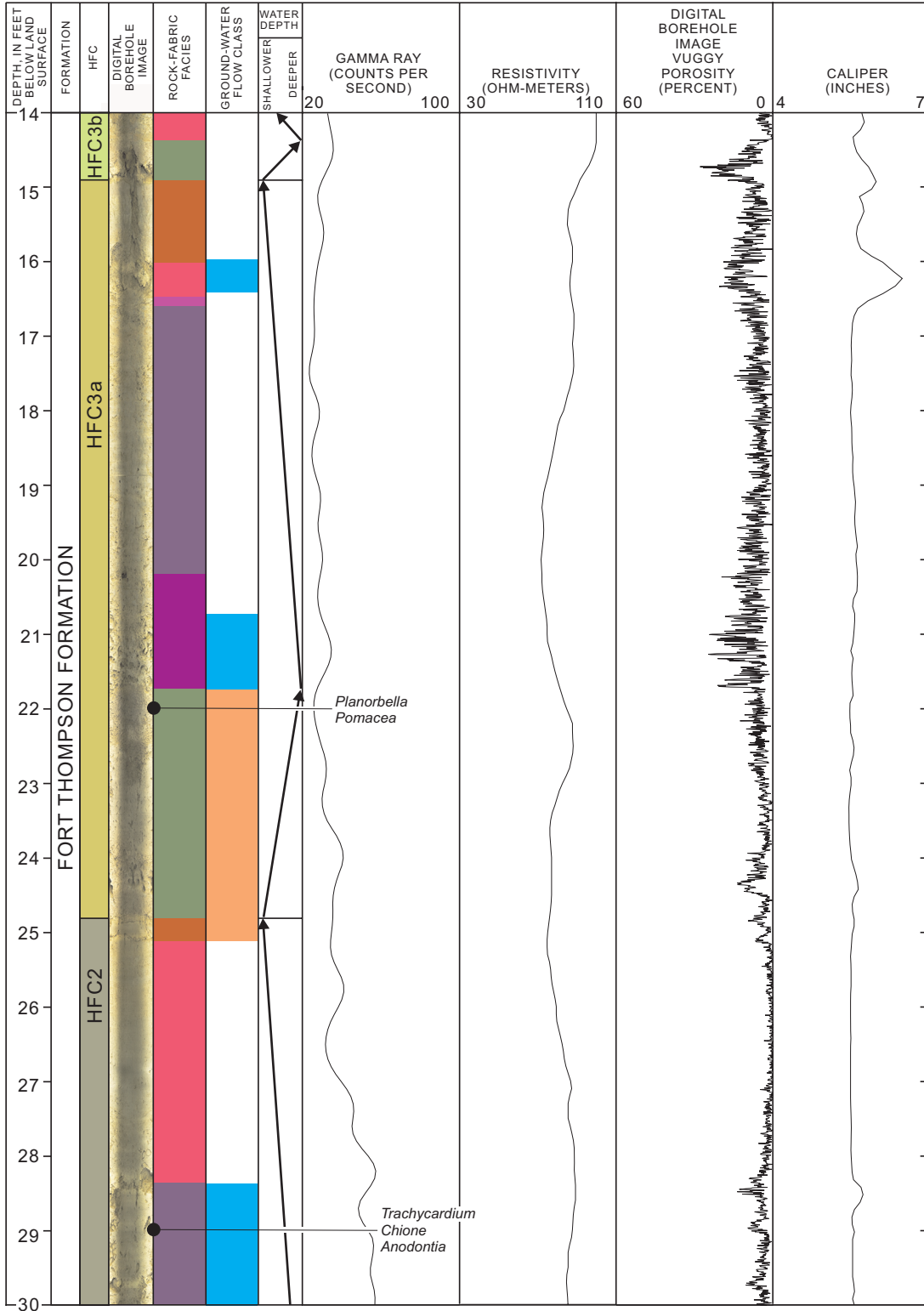
G-3675 (42-58 feet below land surface)

G-3678



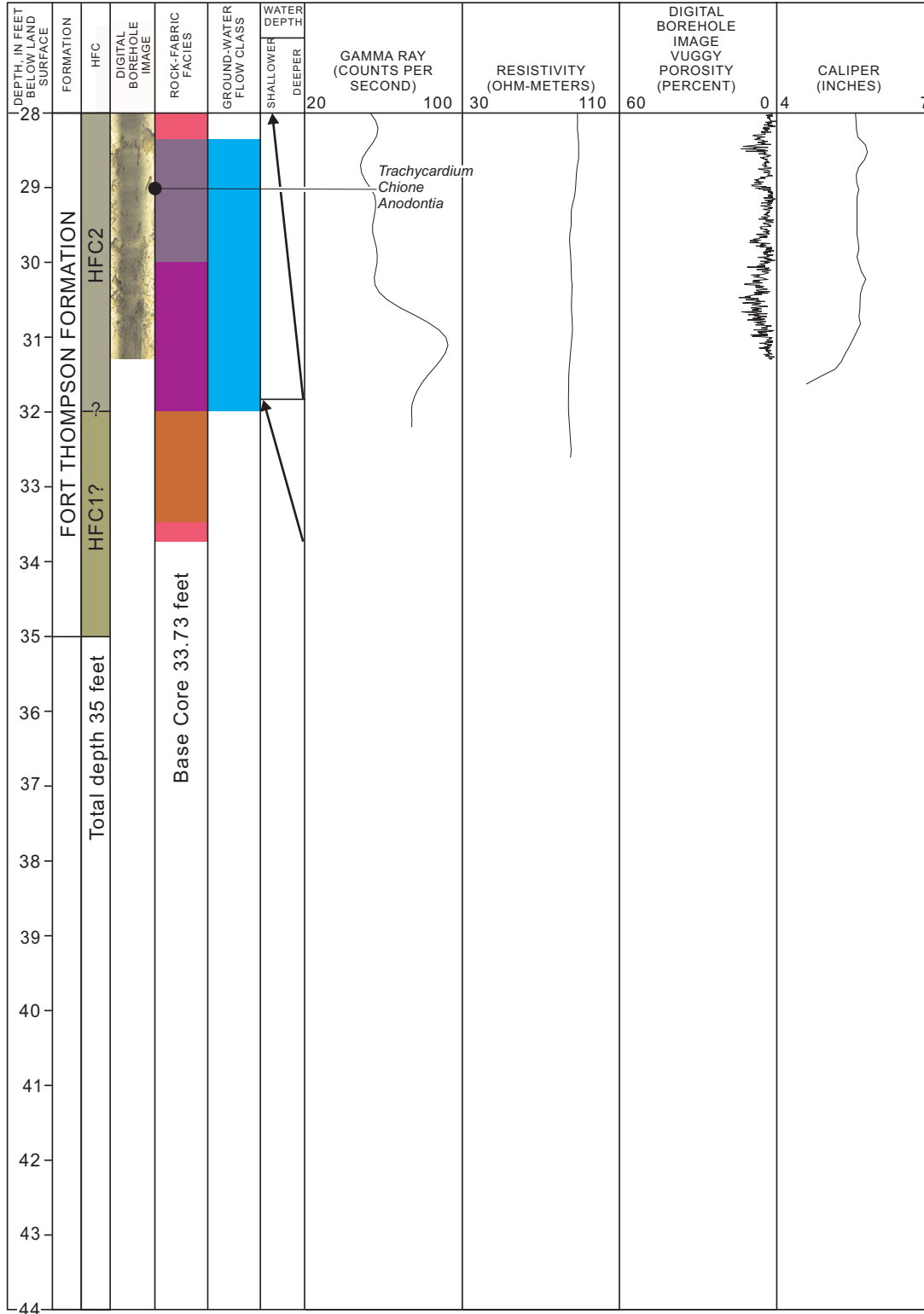
G-3678 (0-16 feet below land surface)

G-3678



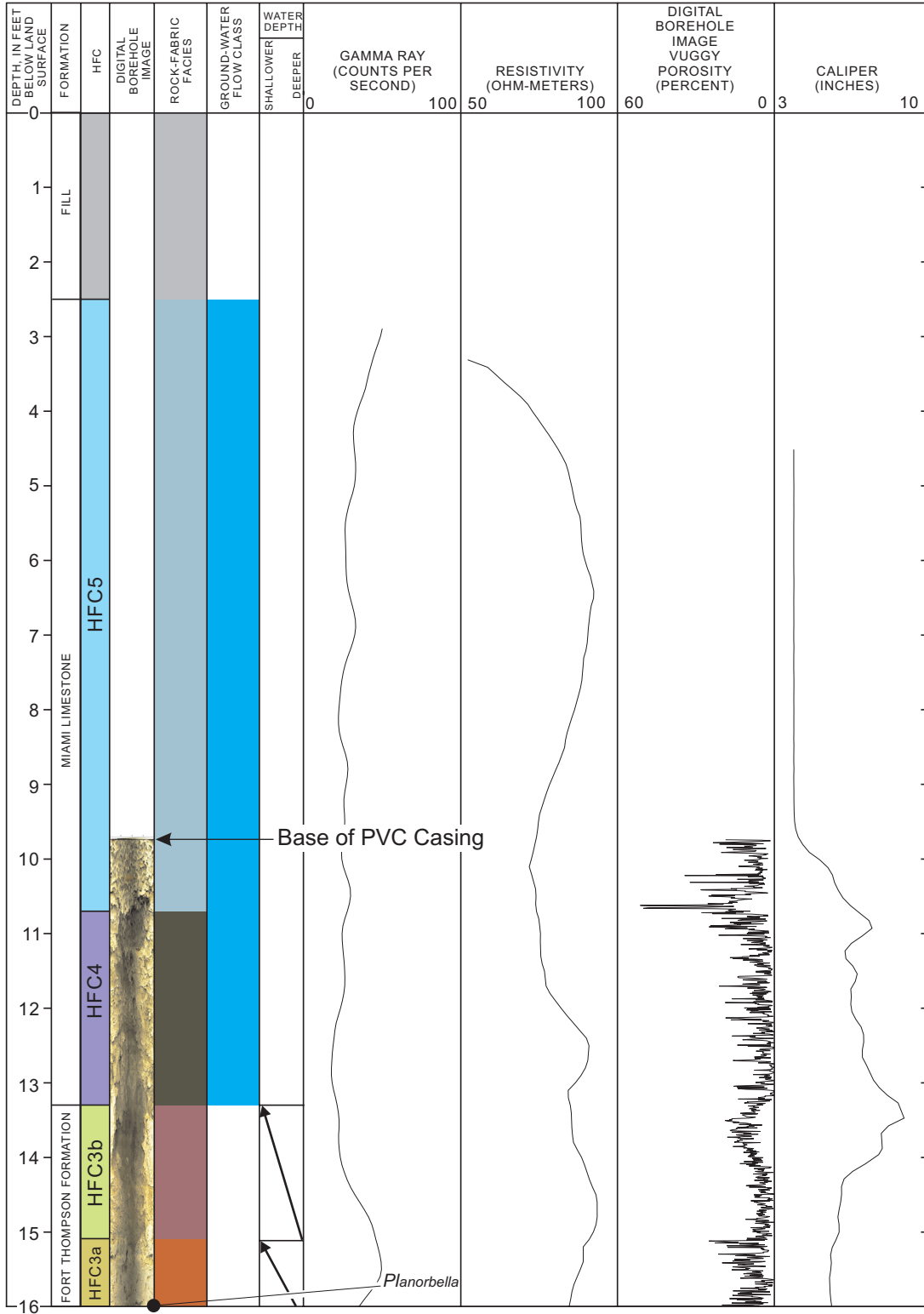
G-3678 (14-30 feet below land surface)

G-3678



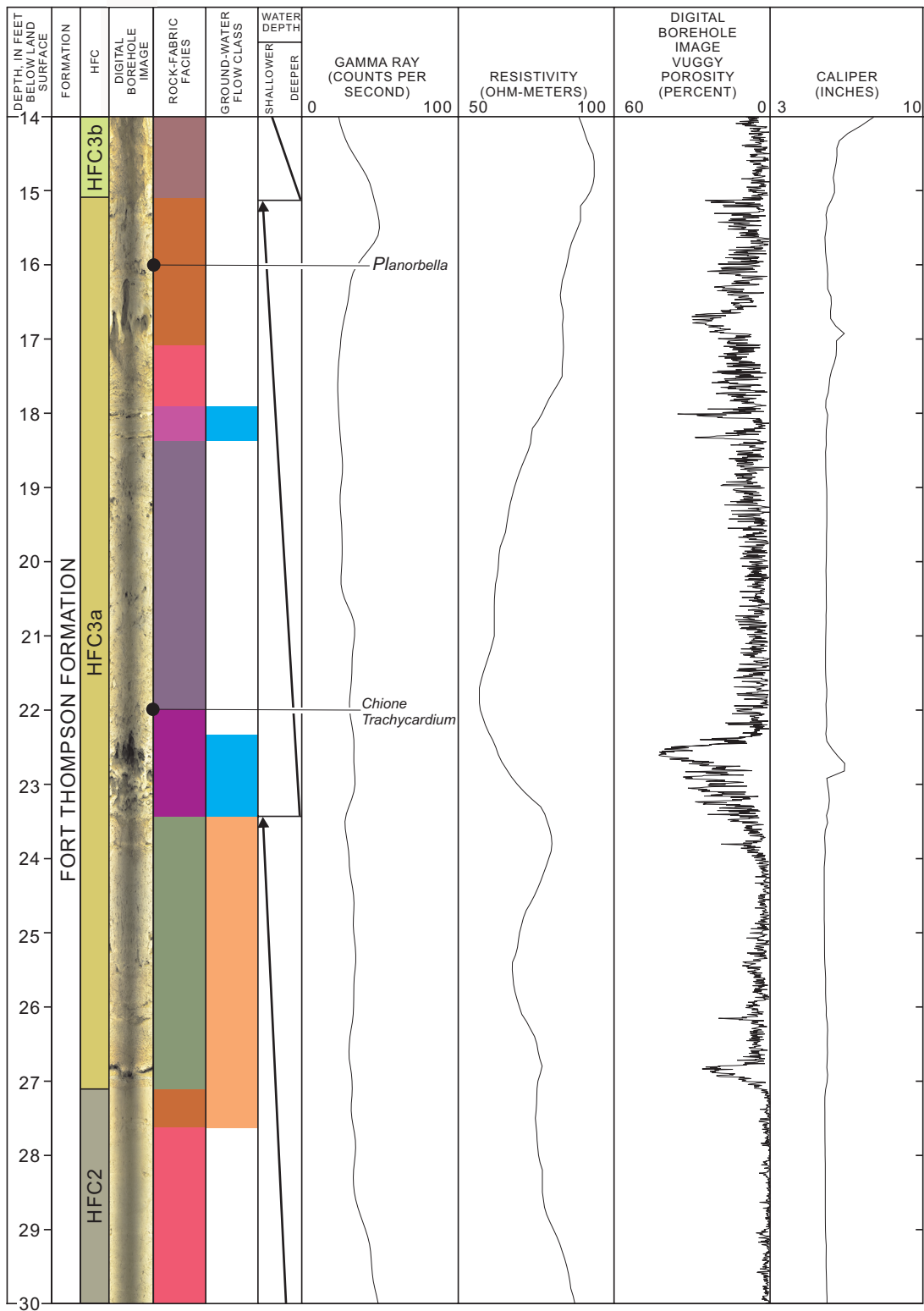
G-3678 (28-44 feet below land surface)

G-3679



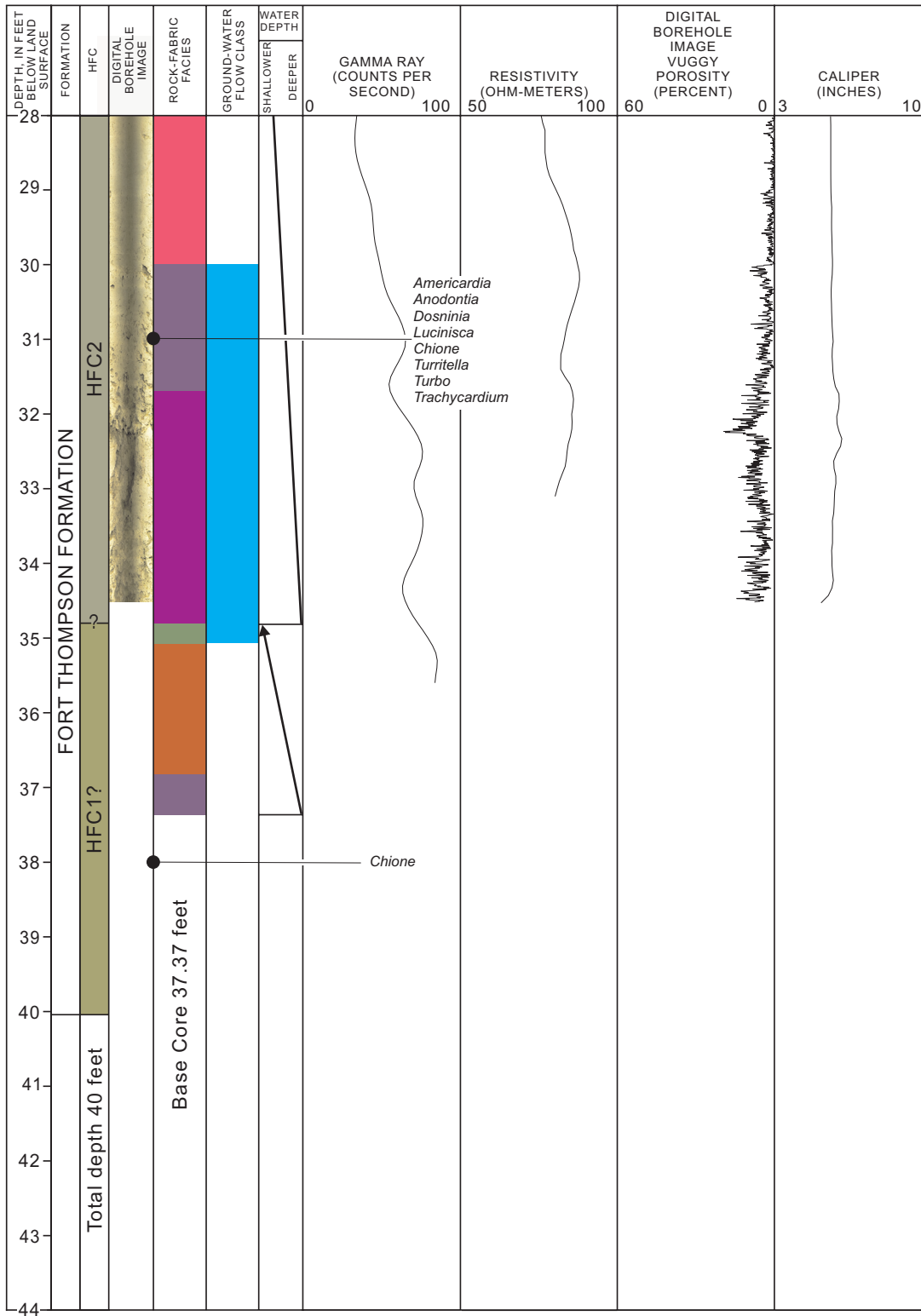
G-3679 (0-16 feet below land surface)

G-3679



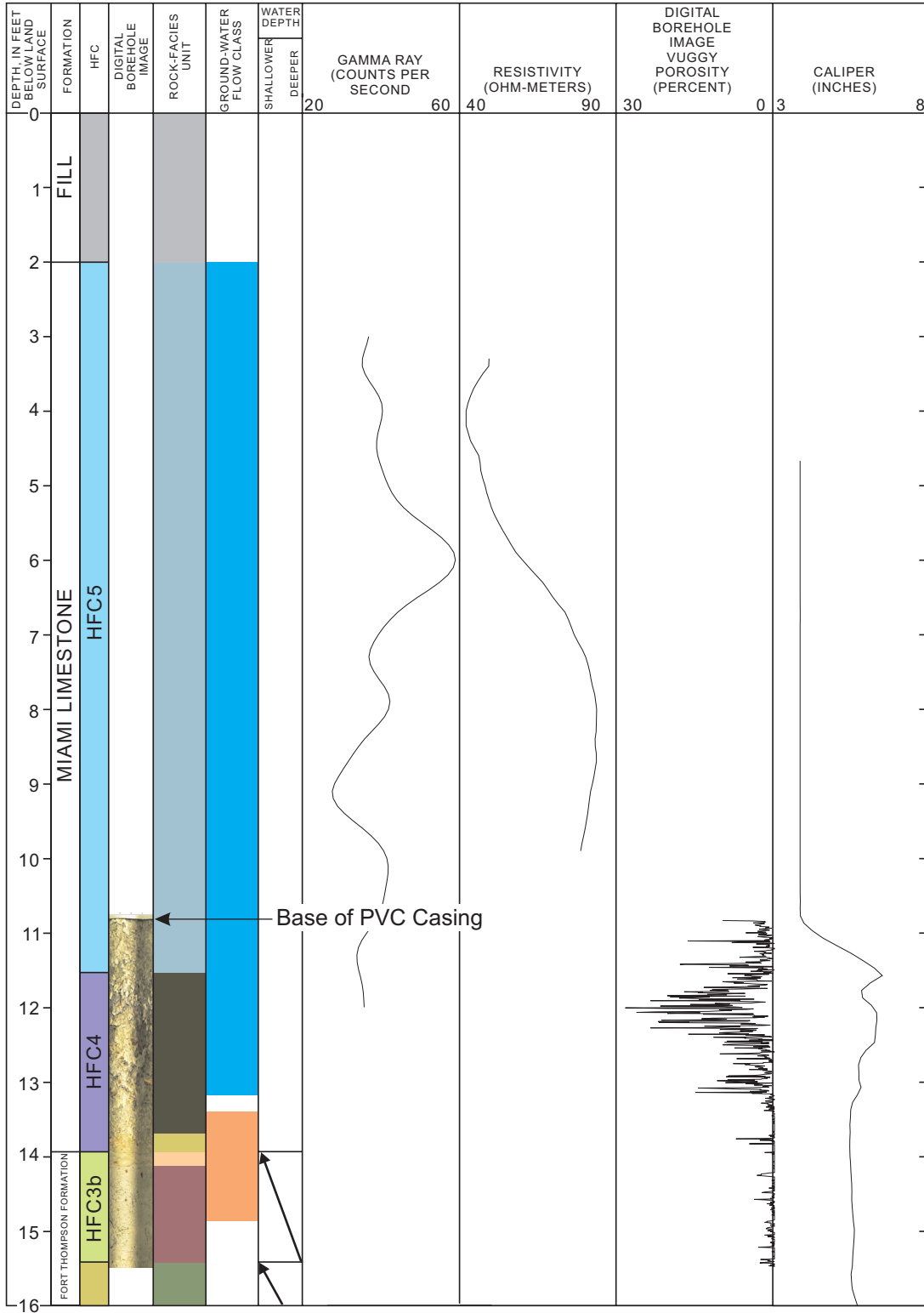
G-3679 (14-30 feet below land surface)

G-3679



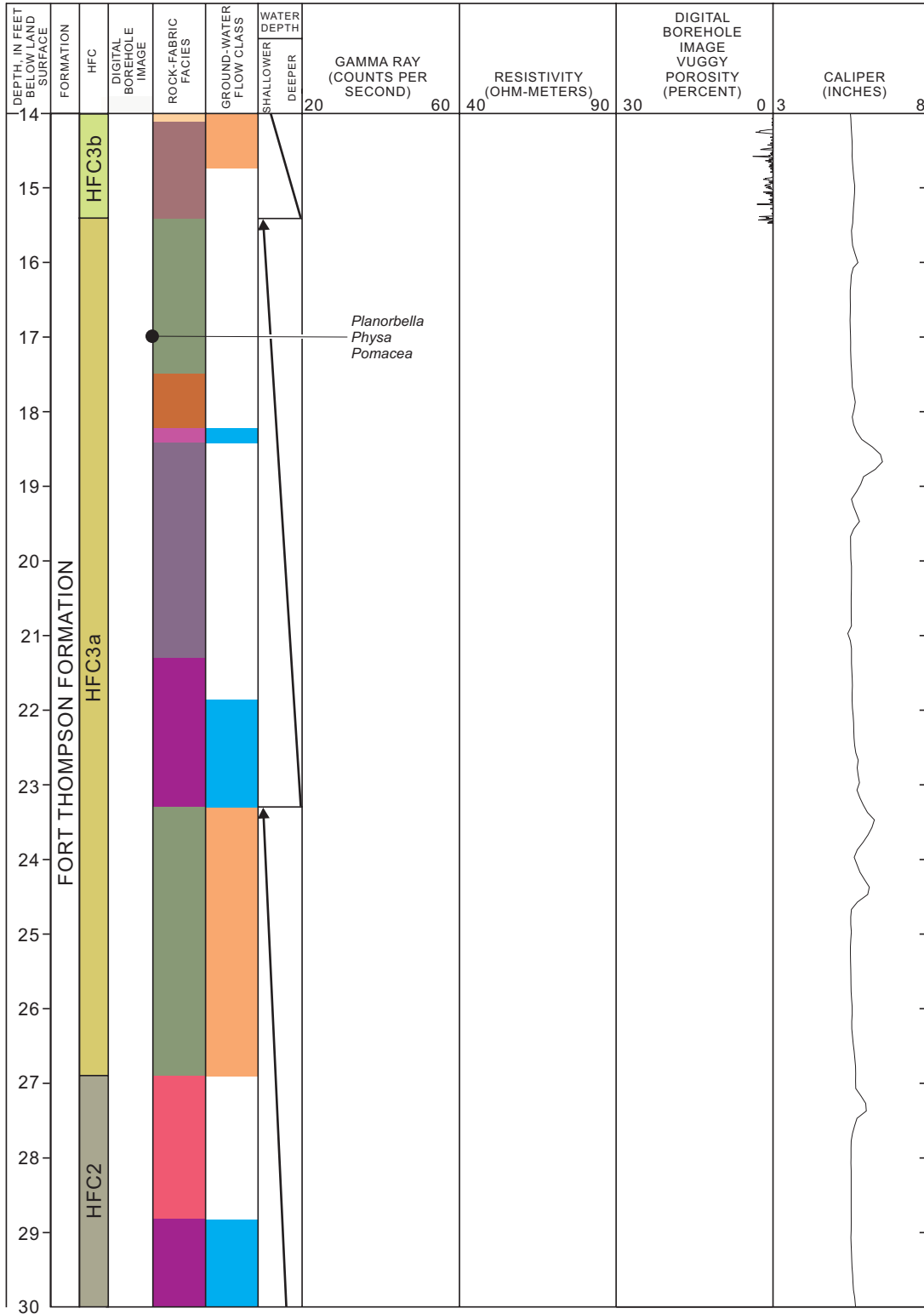
G-3679 (28-44 feet below land surface)

G-3680



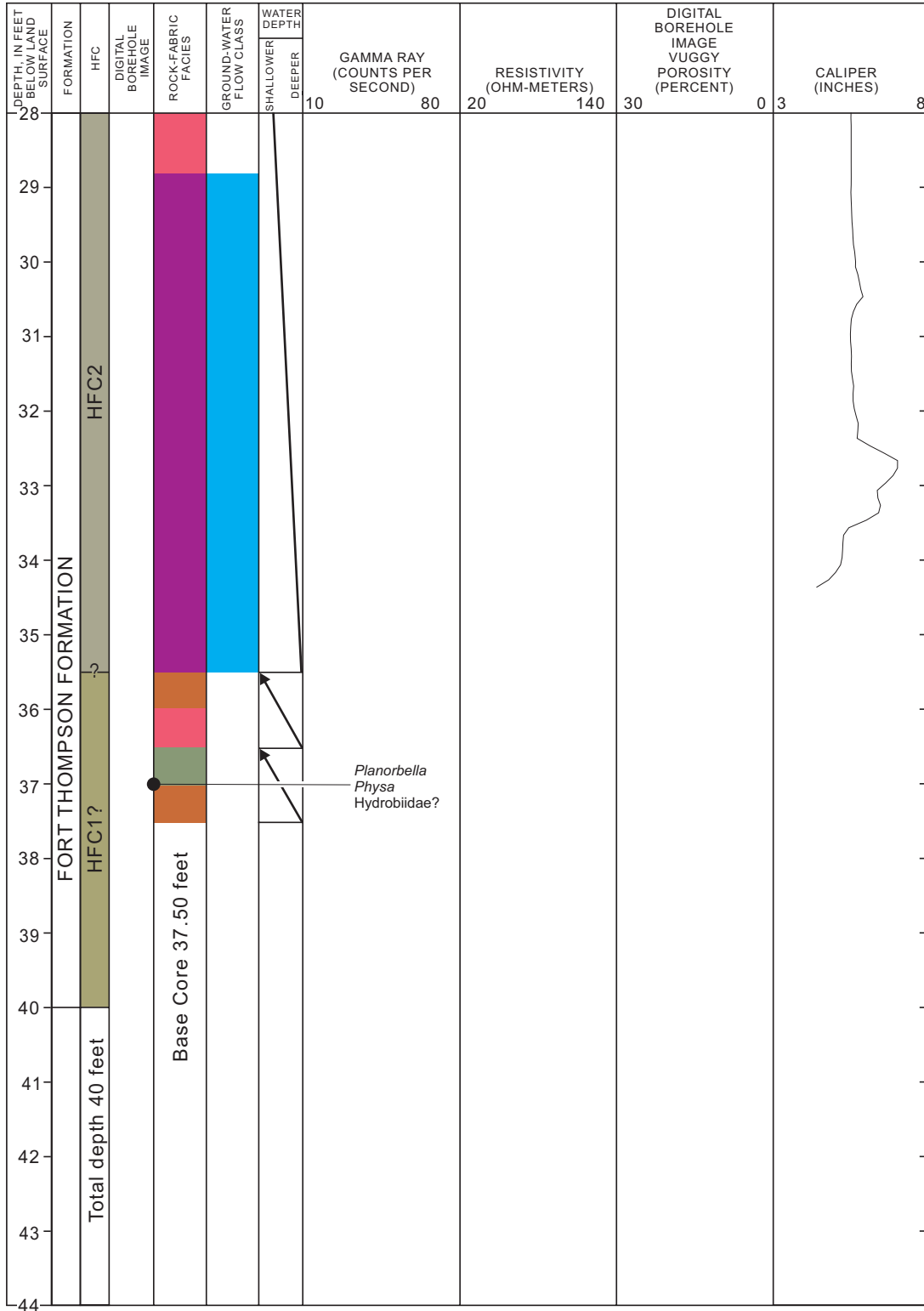
G-3680 (0-16 feet below land surface)

G-3680



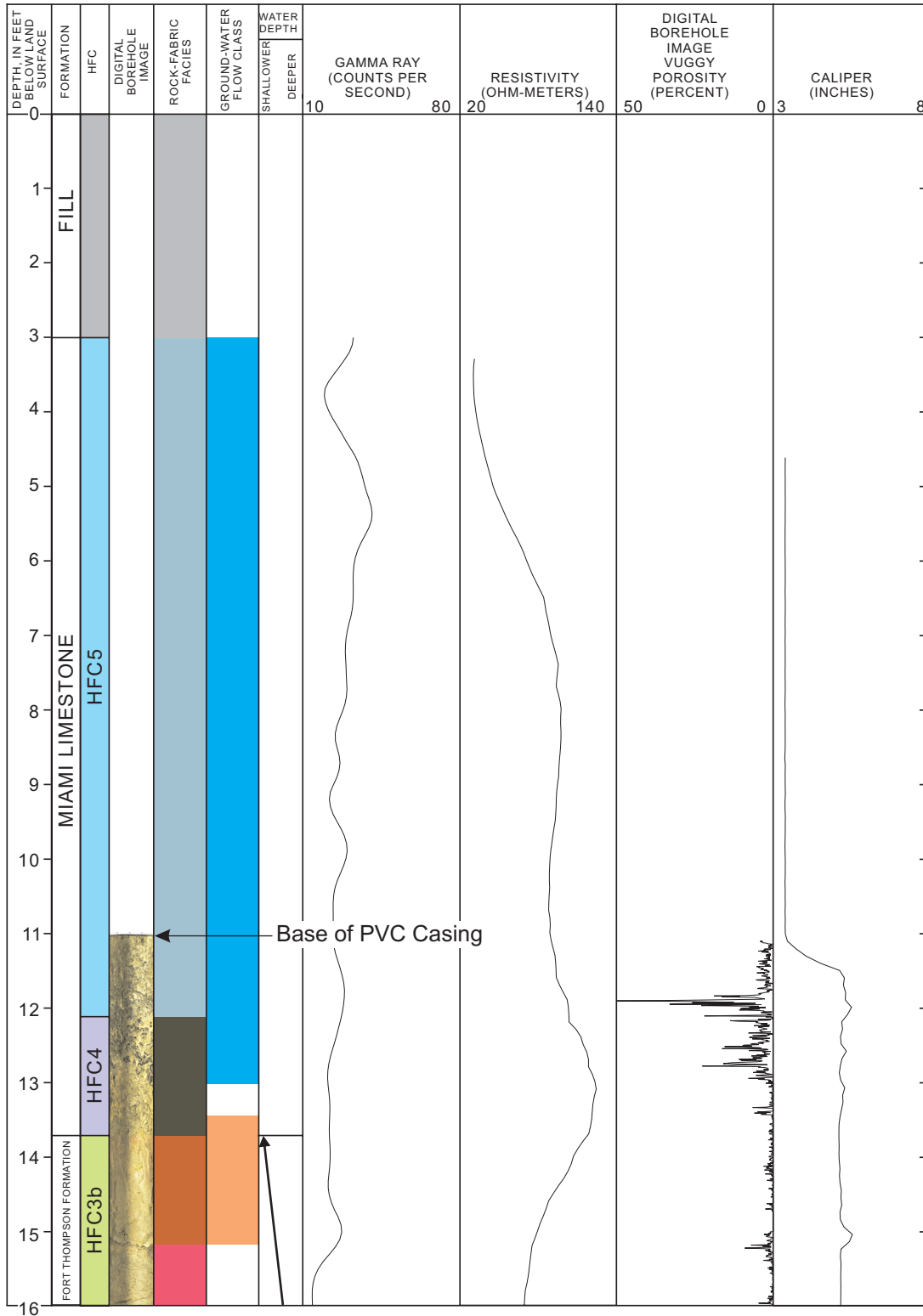
G-3680 (14-30 feet below land surface)

G-3680



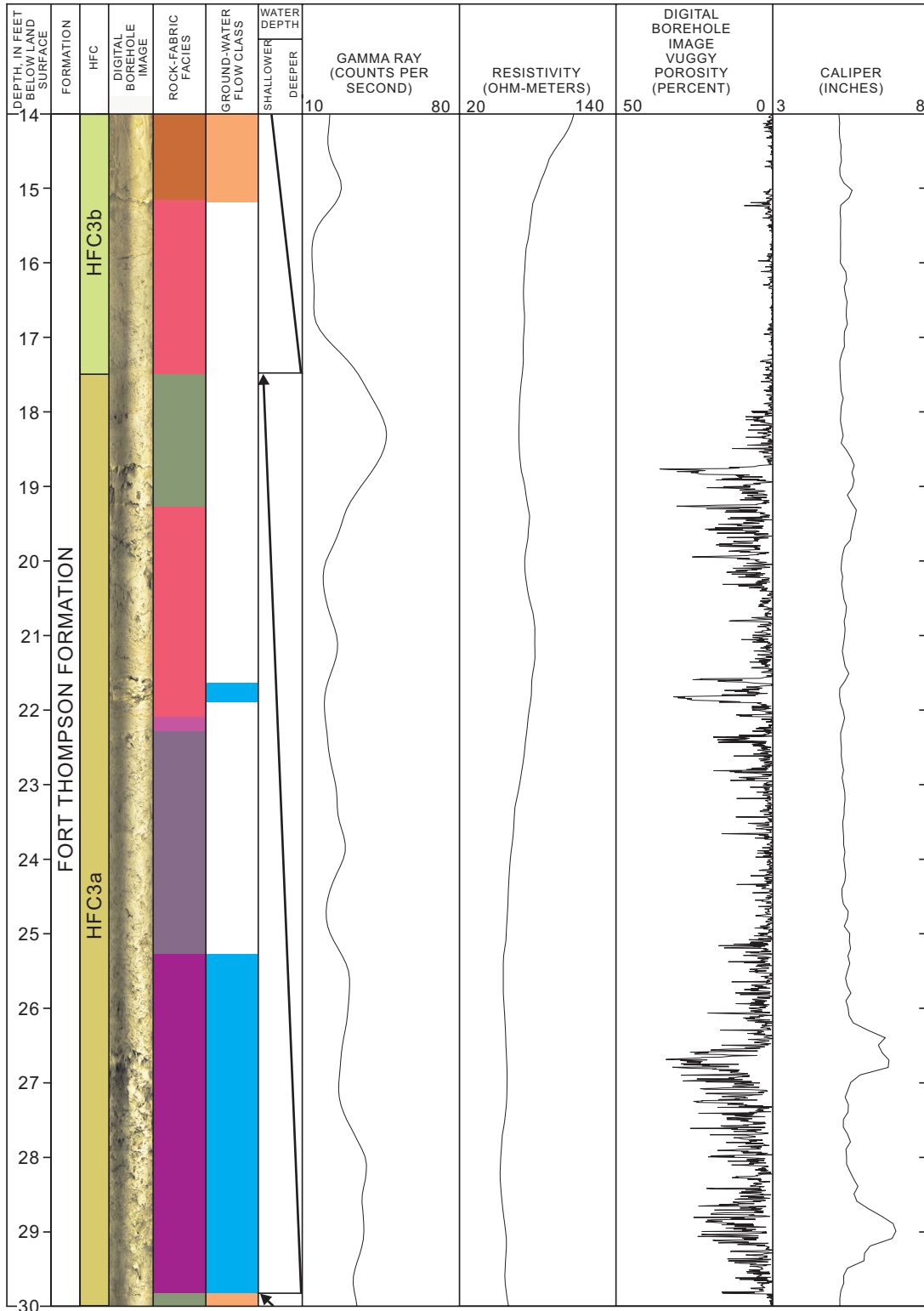
G-3680 (28-44 feet below land surface)

G-3681



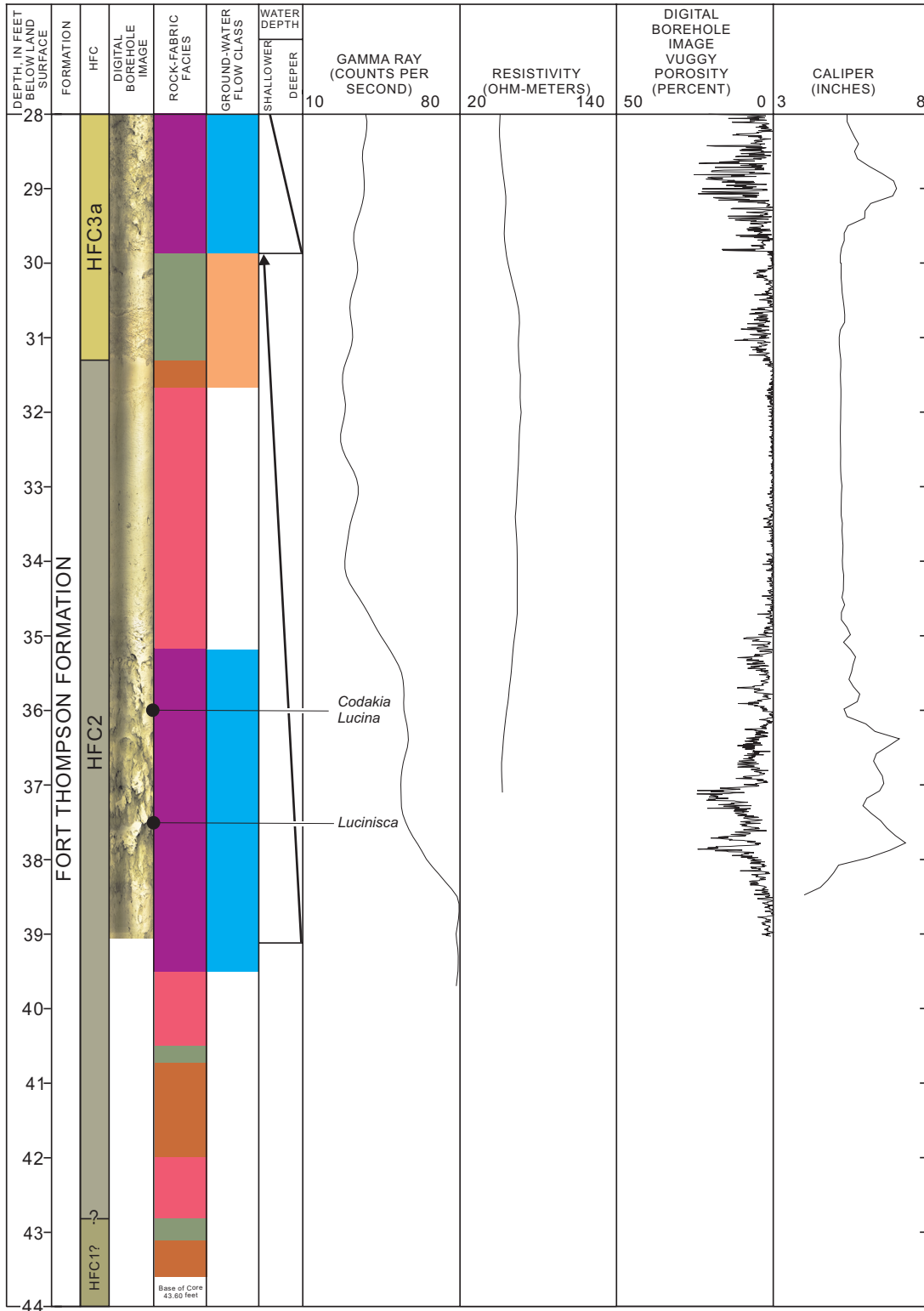
G-3681 (0-16 feet below land surface)

G-3681



G-3681 (14-30 feet below land surface)

G-3681



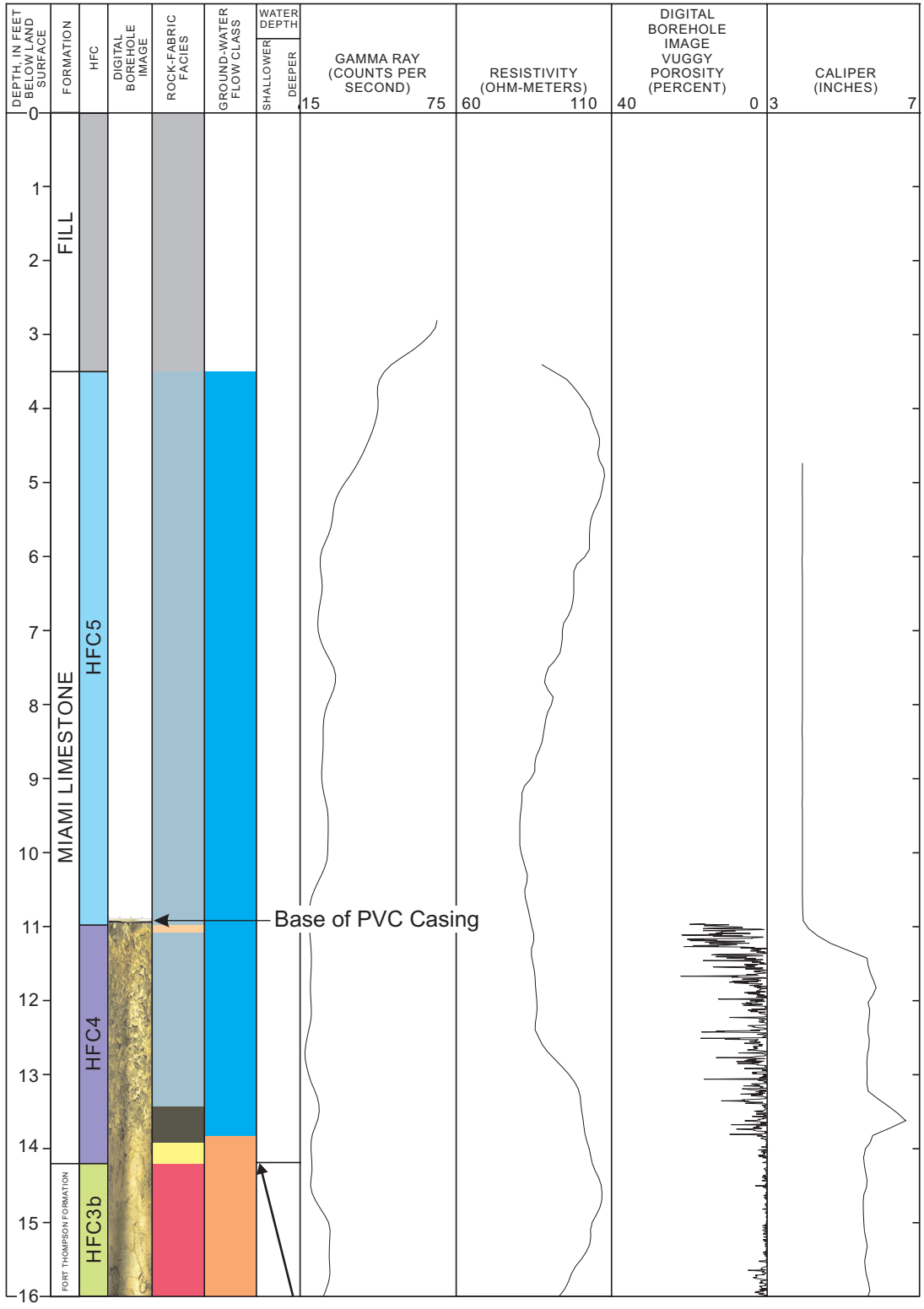
G-3681 (28-44 feet below land surface)

G-3681

DEPTH IN FEET BELOW LAND SURFACE	FORMATION	HFC	DIGITAL BOREHOLE IMAGE	ROCK-FABRIC FACIES	GROUND-WATER FLOW CLASS	WATER DEPTH		GAMMA RAY (COUNTS PER SECOND)	RESISTIVITY (OHM-METERS)		DIGITAL BOREHOLE IMAGE VUGGY POROSITY (PERCENT)	CALIPER (INCHES)		
						SHALLOWER	DEEPER							
42	FORT THOMPSON FORMATION	HFC2					0	300	0	200	50	0	4	12
43	HFC1?													
44	HFC1?													
45	Total depth 45 feet		Base of Core 31.82 feet											
46														
47														
48														
49														
50														
51														
52														
53														
54														
55														
56														
57														
58														

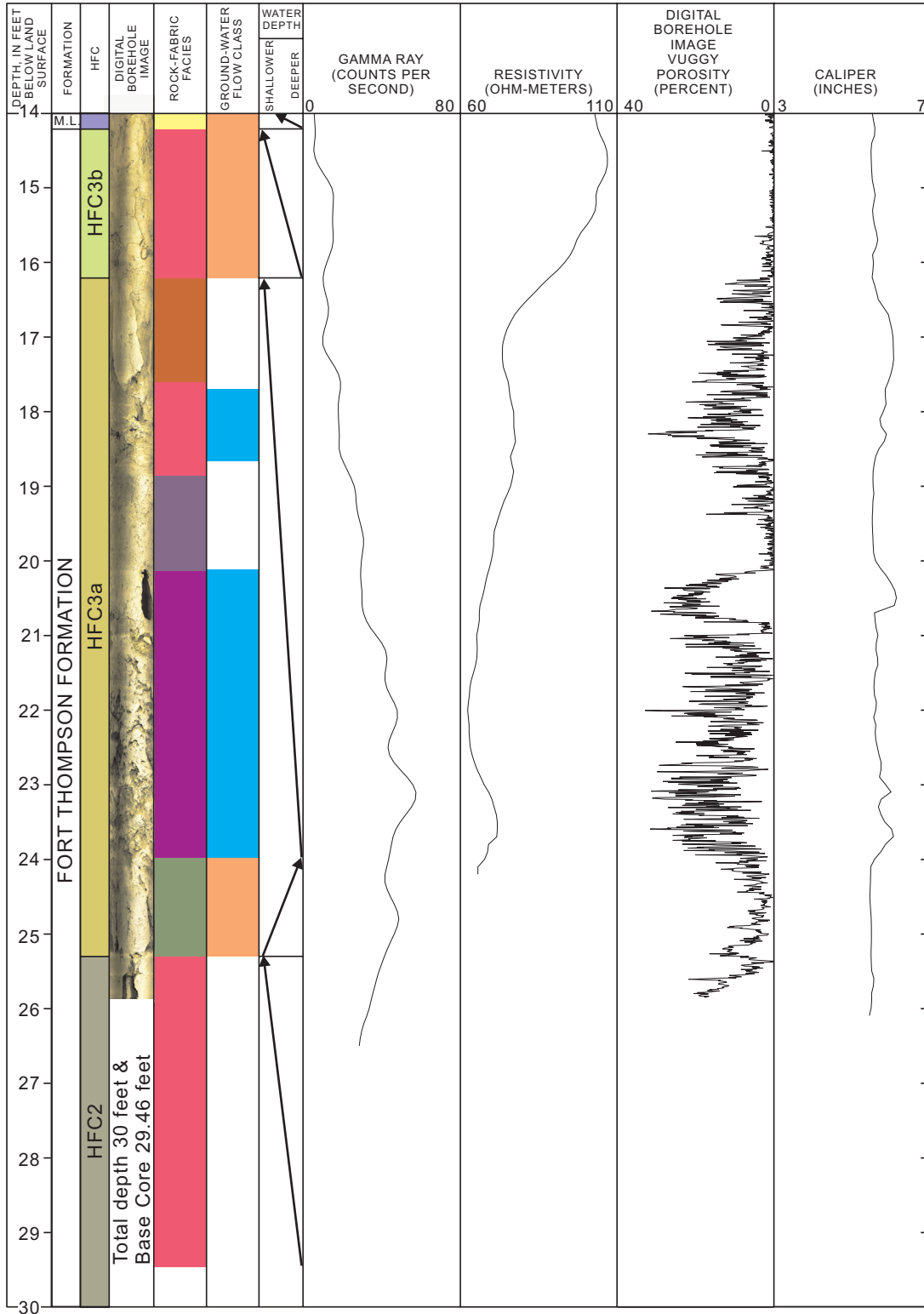
G-3681 (42-58 feet below land surface)

G-3682



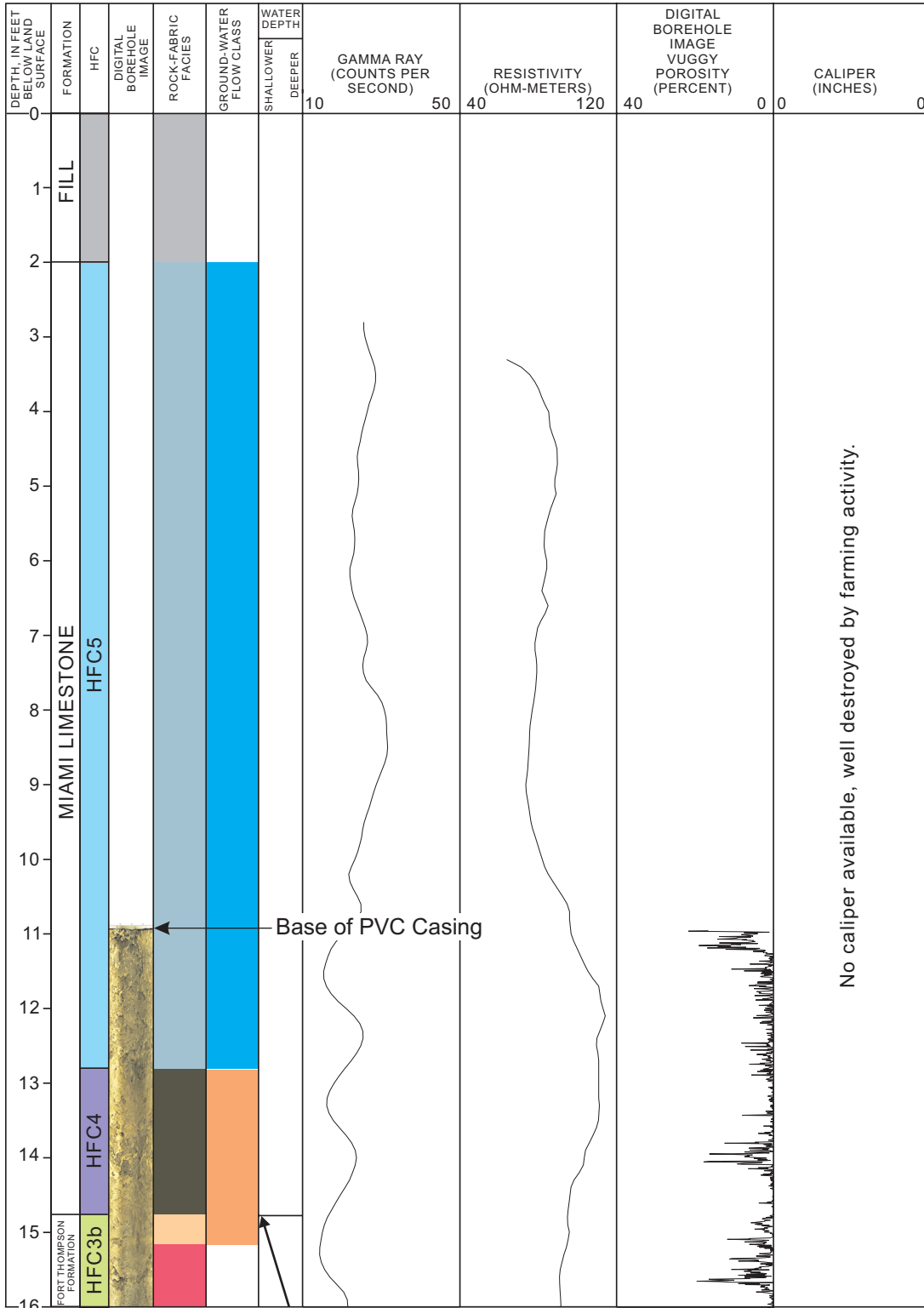
G-3682 (0-16 feet below land surface)

G-3682



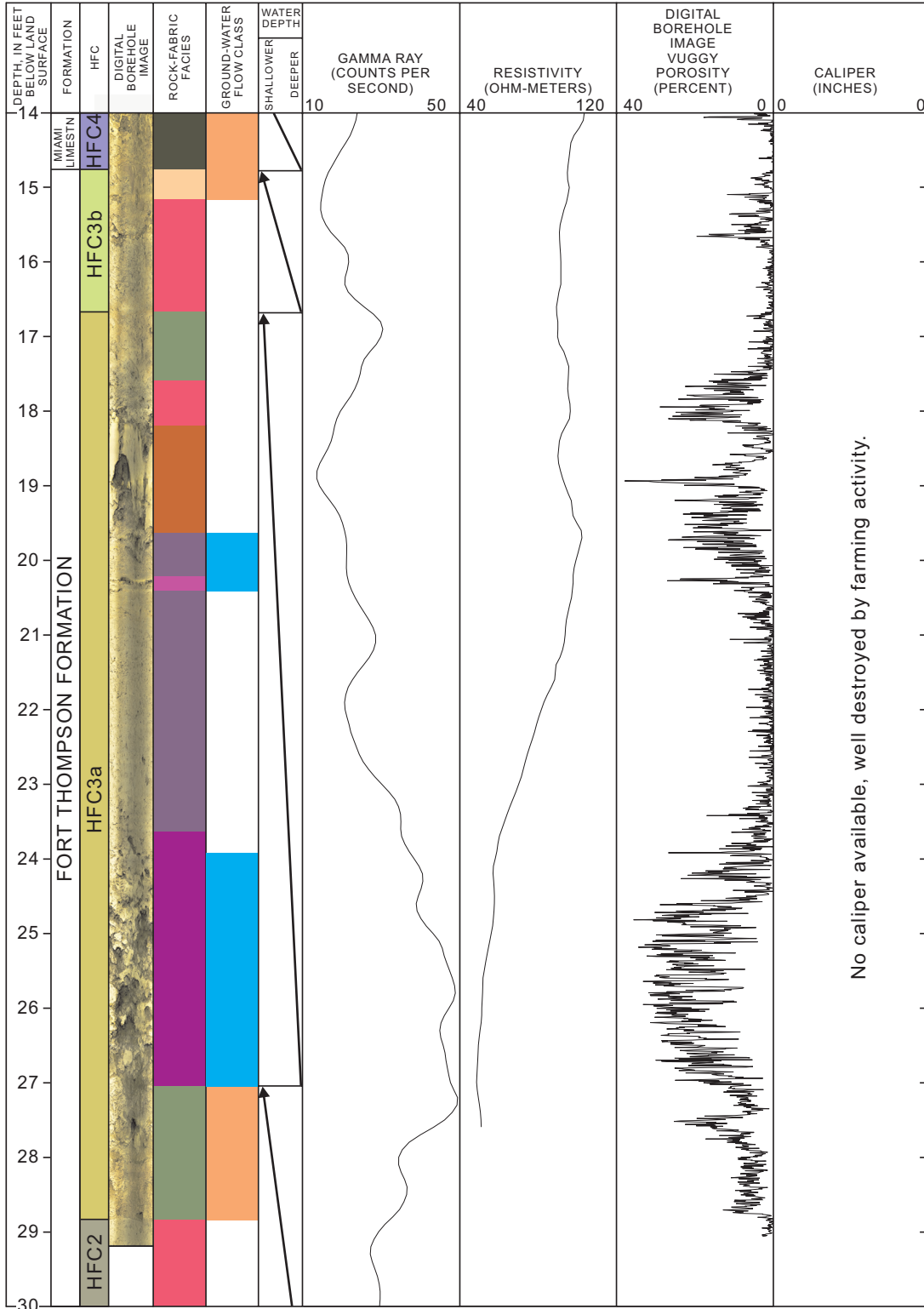
G-3682 (14-30 feet below land surface)

G-3683



G-3683 (0-16 feet below land surface)

G-3683



No caliper available, well destroyed by farming activity.

G-3683 (14-30 feet below land surface)

G-3683

DEPTH IN FEET BELOW LAND SURFACE	FORMATION	HFC	DIGITAL BOREHOLE IMAGE	ROCK-FABRIC FACIES	GROUND-WATER FLOW CLASS	WATER DEPTH		GAMMA RAY (COUNTS PER SECOND)	RESISTIVITY (OHM-METERS)	DIGITAL BOREHOLE IMAGE VUGGY POROSITY (PERCENT)	NEUTRON BULK POROSITY (PERCENT)							
						SHALLOWER	DEEPER											
28	FORT THOMPSON FORMATION	HFC3a	Total depth 35 feet	Base Core 34.42 feet				10	80	20	140	50	0	100	0			
29																		
30																		
31																		
32		HFC2																
33																		
34																		
35																		
36																		
37																		
38																		
39																		
40																		
41																		
42																		
43																		
44																		

G-3683 (28-44 feet below land surface)