



Upper Calico Trail #208




(970) 882-7296

San Juan National Forest
Dolores Public Lands Office
P.O. Box 210; 100 N 6th Street
Dolores, CO 81323
www.fs.fed.us/r2/sanjuan



3/2004

Length: 5.5 miles	Hiking level: Moderate to Difficult
Starting Elevation: 10,150 ft	Facilities: No developed water sources; toilet available at trailhead.
Ending Elevation: 10,400 ft, at the junction with Falls Creek Trail #640.	Amount of use: light
 Use restrictions: ATVs are not permitted due to the narrow width of trail. Camping is not permitted at trailhead.	USGS Map(s): Rico & Dolores Peak (7.5') Quads.

Trail Description:

The Calico Trail is comprised of two sections, the Upper and Lower Calico Trails. The lower portion of the trail (FST 641) is accessed via the Priest Gulch Trailhead (see Priest Gulch & Lower Calico Trails information sheet). The most northerly portion is referred to as the Upper Calico Trail; this portion of the trail is part of the National Recreation Trail (NRT) system. Beginning at the Calico Trailhead, the single-track trail makes it's way over and around several peaks, as well as along fairly long stretches of narrow ridgelines. While these stretches afford some spectacular views, be aware of frequent afternoon thundershower activities, which are fairly common in late July and August. The view to the north includes 14,159-foot high El Diente Peak, which is within the Lizard Head Wilderness. The trail winds through a forest of spruce and fir as it follows the divide between the Dolores and West Dolores Rivers, climbing at an average grade of 8% to 11,866-foot high Pappoose Peak. The Upper Calico NRT terminates at the junction with Fall Creek Trail (640) and the lower portion of the Calico Trail (649). From this junction you can loop back to the Calico Trailhead via the Falls Creek and Winter Trails (202), or continue on to the Priest Gulch Trailhead via the Lower Calico Trail.

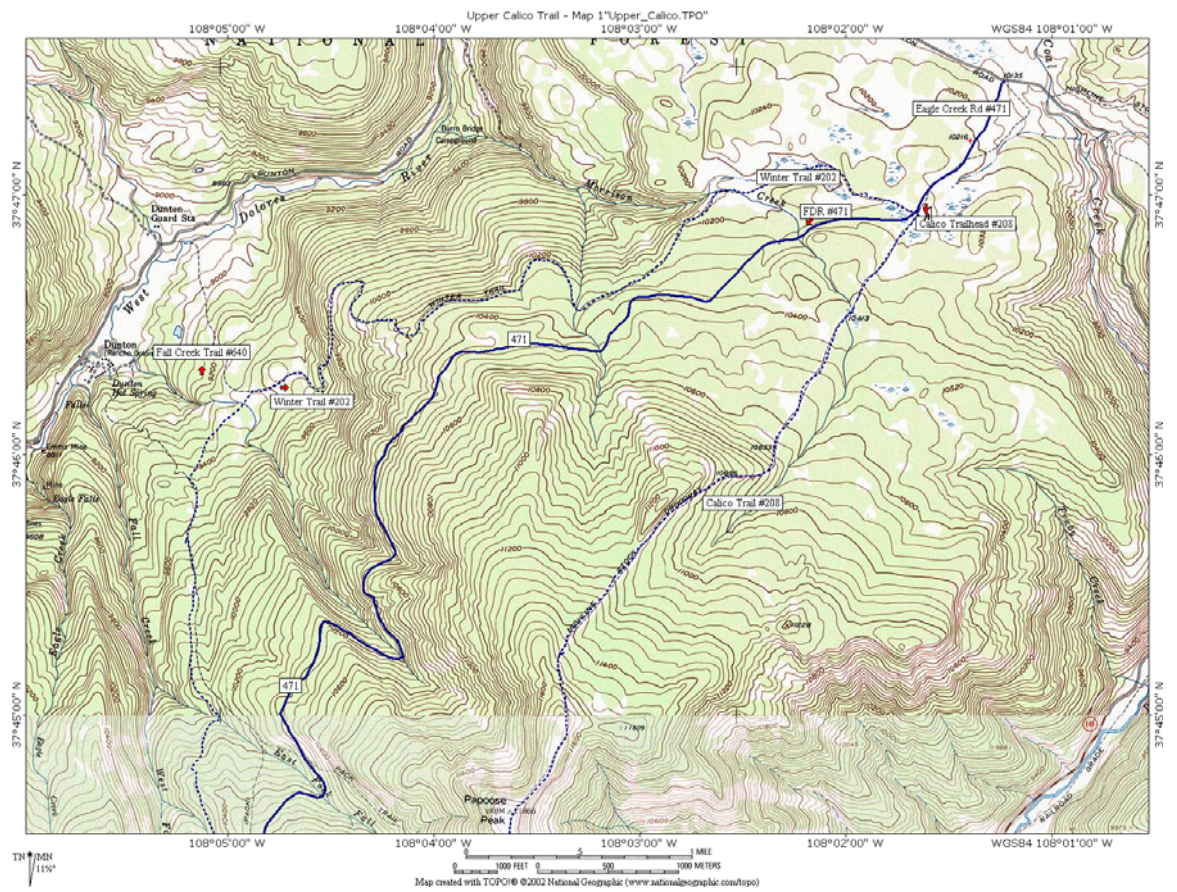
Directions:

From Dolores on Highway 145, travel east for 43 miles, and take the West Fork Road (FDR 535) turnoff, which is almost directly across from the Cayton Campground Turnoff and approximately 6 miles north of Rico. Turn south on the Eagle Creek Road (FDR 471). The trailhead is approximately one mile down this road.



**PACK IT IN - PACK IT OUT!
LEAVE NO TRACE!!!**





See map #2 below:

