



Priest Gulch & Lower Calico Trails 645/649




San Juan National Forest
Dolores Public Lands Office
P.O. Box 210; 100 N 6th Street
Dolores, CO 81323



(970) 882-7296

www.fs.fed.us/r2/sanjuan

01/2004

| | |
|---|---|
| Length: Priest (P) 7.8 mi; Lower Calico (LC) 13.2 mi; | Hiking level: Moderate to Difficult |
| Starting Elevation: (P & LC) 8,000 ft. Trailhead located at the Priest Gulch Trailhead. | Facilities: No developed water sources (both trails) |
| Ending Elevation: (P) 10,900 ft: (LC) 10,400' | Amount of use: Moderate (both) |
|  <p>Use restrictions: ATVs are not permitted due to narrow width of trail. Overnight camping at trailhead not permitted.</p> | USGS Map(s): Rico & Wallace Ranch, and Clyde Lake Quads (7.5') |

Trail Description:

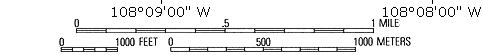
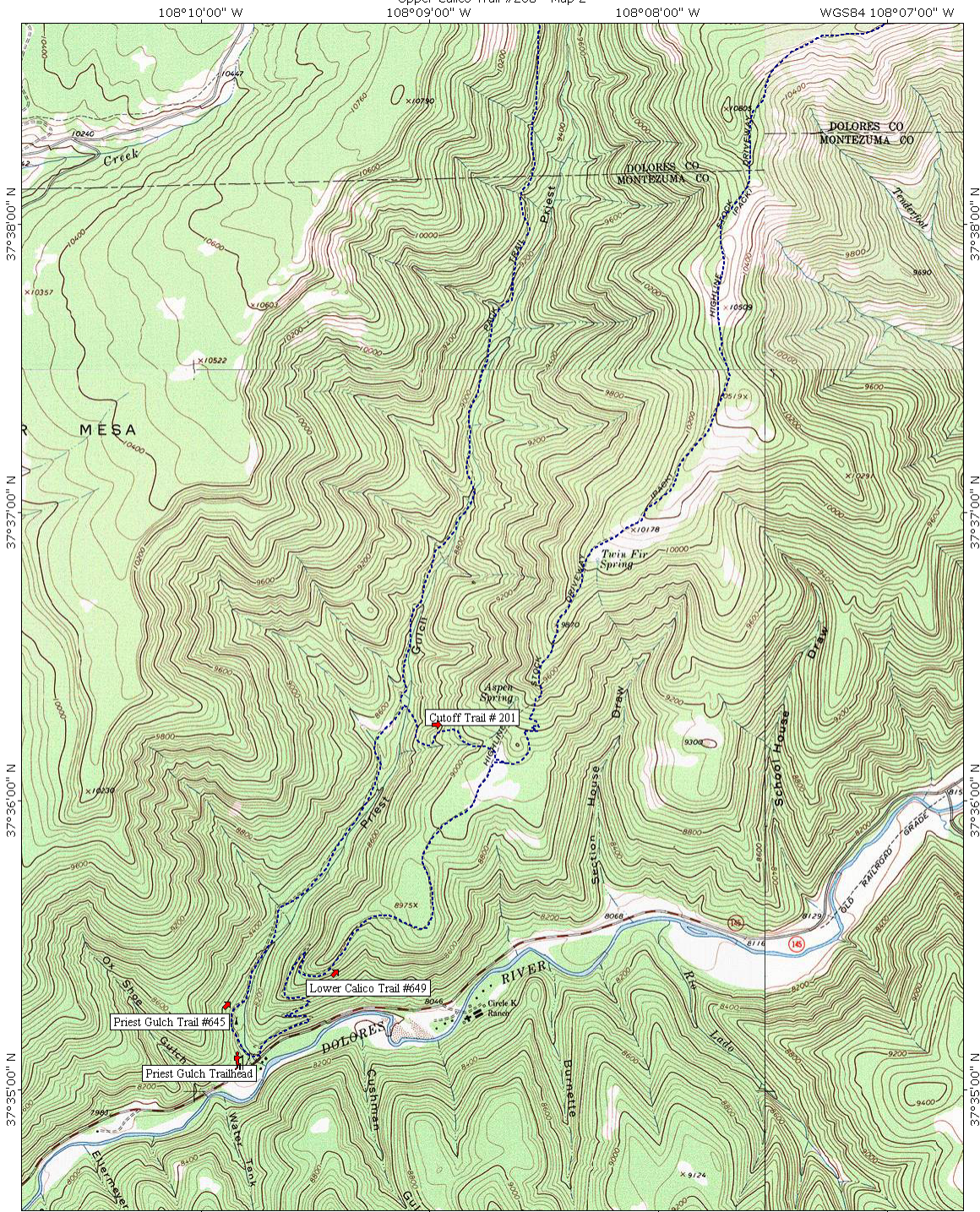
- Access for both the Priest Gulch #645 and the Lower portion of the Calico #649 Trails is located at the Priest Gulch Trailhead, located across the highway from the Dolores River. From the town of Dolores, travel northeast for approximately 25 miles on Highway 145. The Priest Gulch trailhead is clearly marked on the north side of the highway; the turn is adjacent to a private driveway.
- For a 3.5-mile loop, take the Priest cutoff trail #201 at mile 1.25 on the Priest Gulch Trail and mile 1.75 on the Lower Calico Trail.
- The Priest Gulch Trail climbs in elevation alongside Priest Gulch drainage, it passes thru lush meadows and a forest of spruce, fir, and aspen. Common wildlife sightings might include Mule deer, Black bear, coyote, magpies, gray jays, Clark's nutcracker, red tail hawk, and various woodpeckers, to name a few. This trail will terminate at the junction with the Calico Trail.
- The Lower Calico Trail was originally designed as a stock drive into the high country; this trail was built through the efforts of the Civilian Conservation Corps (CCC) in the 1930's. The trail begins by crossing Priest Gulch Creek via a trail bridge, and starts a fairly steep accent up a red-dirt ridge via many switchbacks. Before leveling out, it will be a steady climb for 1.4 miles through mixed ponderosa pine and aspen forest. The trail continues north past the junction with Priest Gulch Trail where it eventually meets up with the junction of West Fork Falls Creek #640 and the Upper Calico #208 trails.
- It is possible to do a 16-mile loop back to the Priest Gulch Trailhead by using the Priest Gulch and the Lower Calico Trails.



PACK IT IN - PACK IT OUT!
LEAVE NO TRACE!!!



Upper Calico Trail #208 - Map 2



Map created with TOPO! © 2002 National Geographic (www.nationalgeographic.com/topo)

Upper Calico Trail #208 - Map 2

