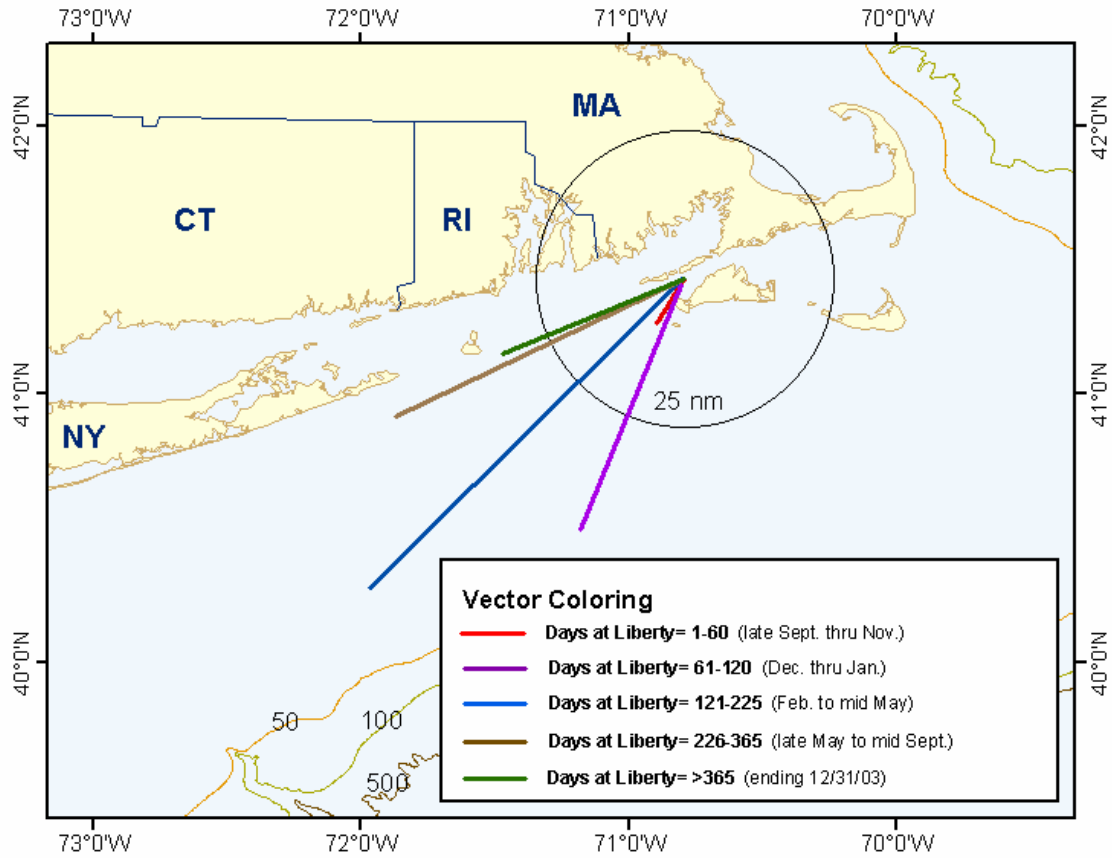


Appendix I. Black Sea Bass Region Vector Summary

Figure A1.
New England Region (MA, RI, CT releases):



Total releases: 2511

Total recaptures: 289

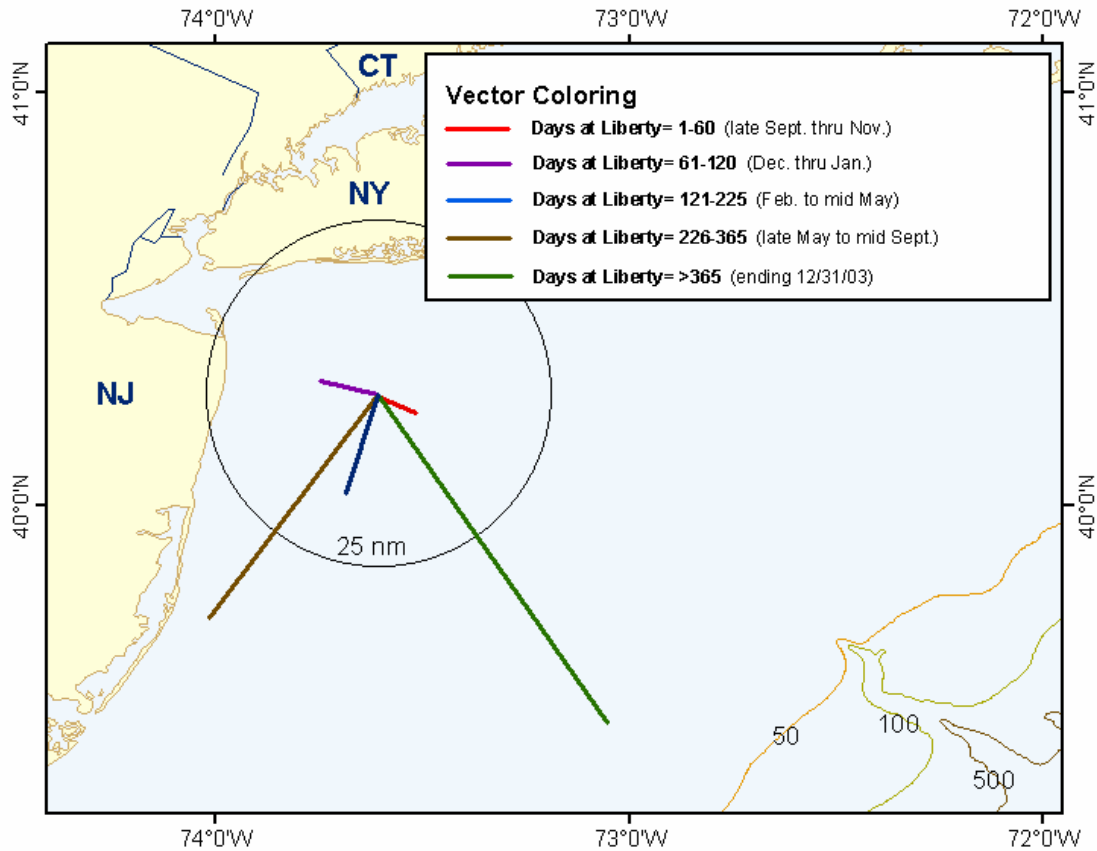
Recapture rate: 11.5%

Distance Traveled Max: 234 nm Mean: 19.6 nm

Days at Liberty Max: 402 Mean: 73

Dist./Day Max: 9.9 nm/day Mean: 0.7 nm/day

Figure A2.
Long Island-N. NJ Region:



Total releases: 953

Total recaptures: 125

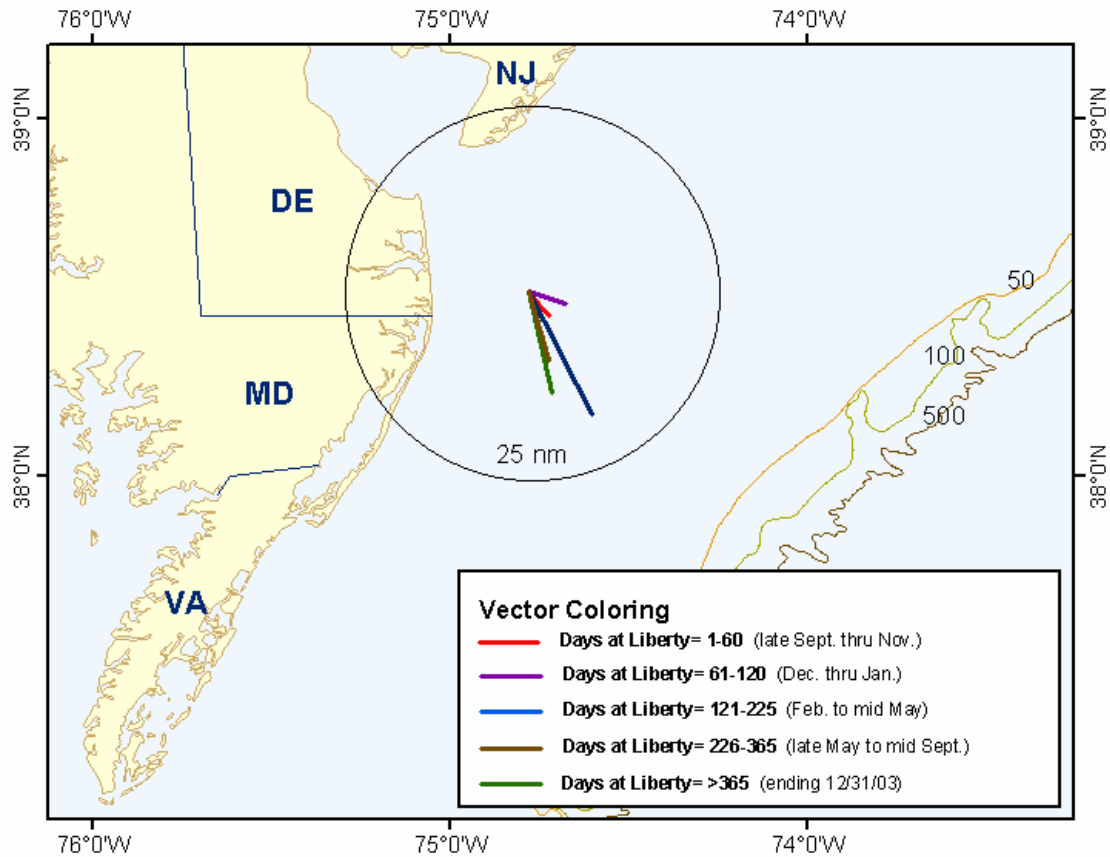
Recapture rate: 13.1%

Distance Traveled Max: 171 nm Mean: 8.3 nm

Days at Liberty Max: 421 Mean: 44

Dist./Day Max: 7.8 nm/day Mean: 0.4 nm/day

Figure A3.
Cape May-Delmarva Peninsula Region:



Total releases: 2812

Total recaptures: 339

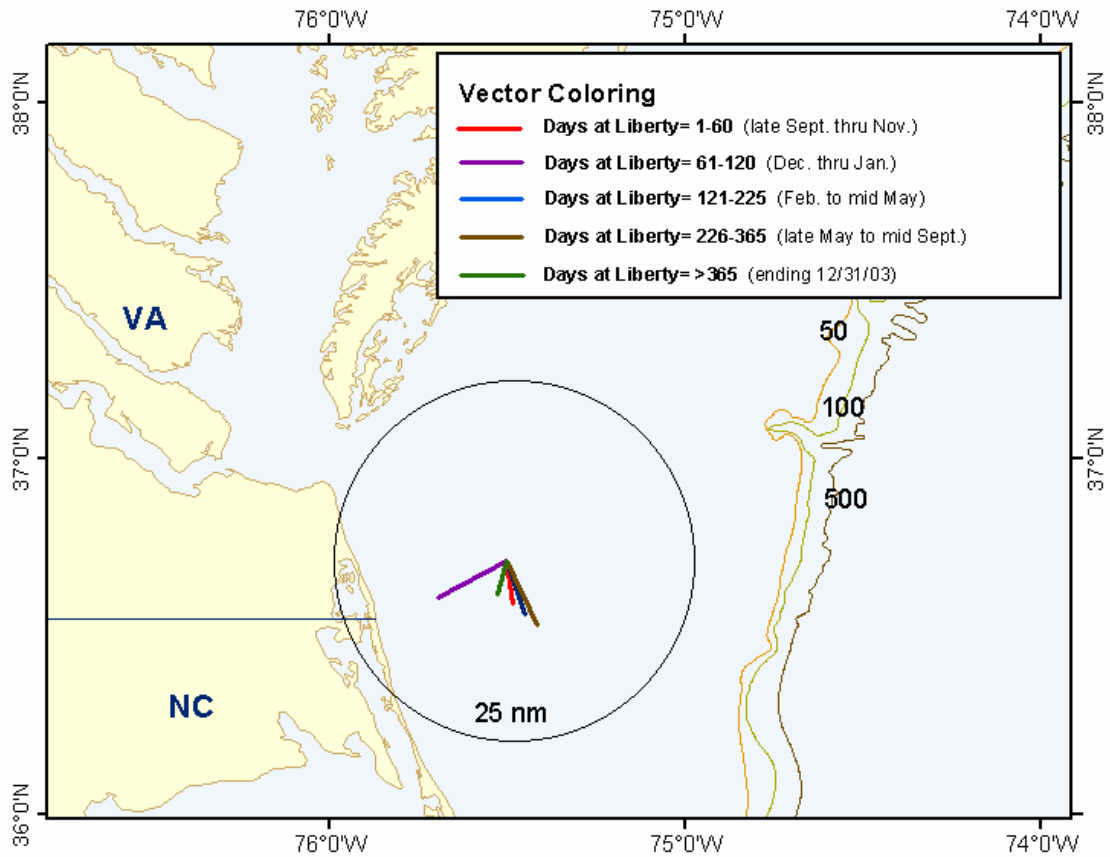
Recapture rate: 12.1%

Distance Traveled Max: 182 nm Mean: 8.9 nm

Days at Liberty Max: 470 Mean: 117

Dist./Day Max: 10.1 nm/day Mean: 0.2 nm/day

Figure A4.
Virginia Beach Region:



Total releases: 819

Total recaptures: 103

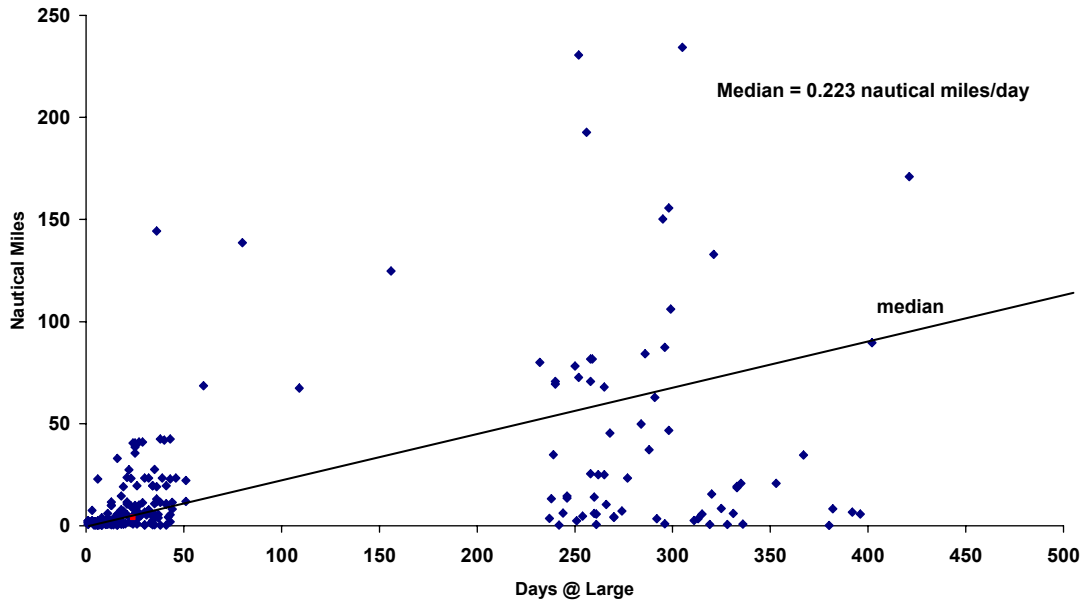
Recapture rate: 12.6%

Distance Traveled Max: 62 nm Mean: 7.1 nm

Days at Liberty Max: 406 Mean: 89

Dist./Day Max: 1.8 nm/day Mean: 0.2 nm/day

Fall 2002 MA-NY releases



Fall 2002 NJ-VA releases

