

FIG. 130.—Phytoplankton dominated by *Halosphaera*, with *Ceratium longipes*. Surface haul off Shelburne, Nova Scotia, June 23, 1911 (station 10293).  $\times 40$

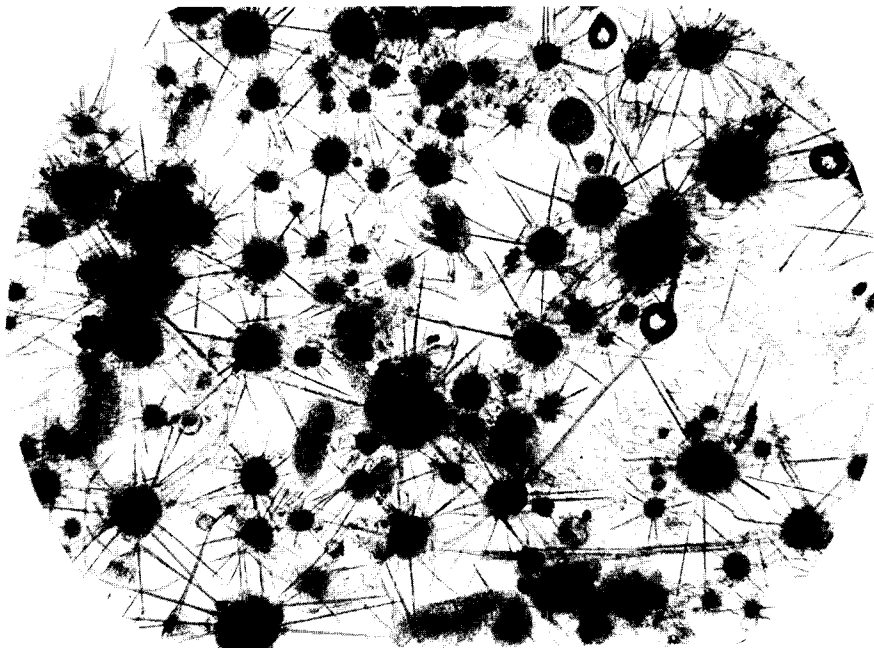


FIG. 131.—Plankton dominated by the radiolarian genus *Acanthometron*. Surface haul off Cape Ann, August 22, 1914 (station 10253).  $\times 50$