

FIG. 121.—Diatom plankton in the western side of the basin of the Gulf of Maine, May 5, 1915 (station 10267, surface), dominated by the oceanic species *Chaetoceras densum*. $\times 150$. (See list, p. 429.)

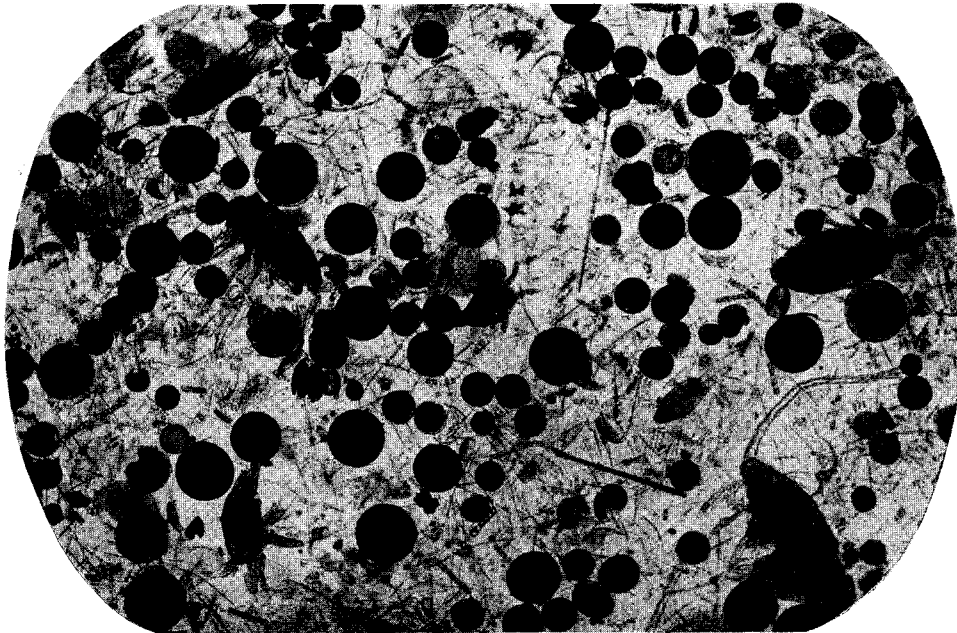


FIG. 122.—Diatom plankton on the northeastern part of Georges Bank, April 17, 1920 (station 20111), dominated by *Coscinodiscus*, with several species of *Chaetoceras*. $\times 40$. (See list, p. 430.)