

New Methodologies in Alcoholism Pharmacotherapy Treatment Studies

Population / Study Retention

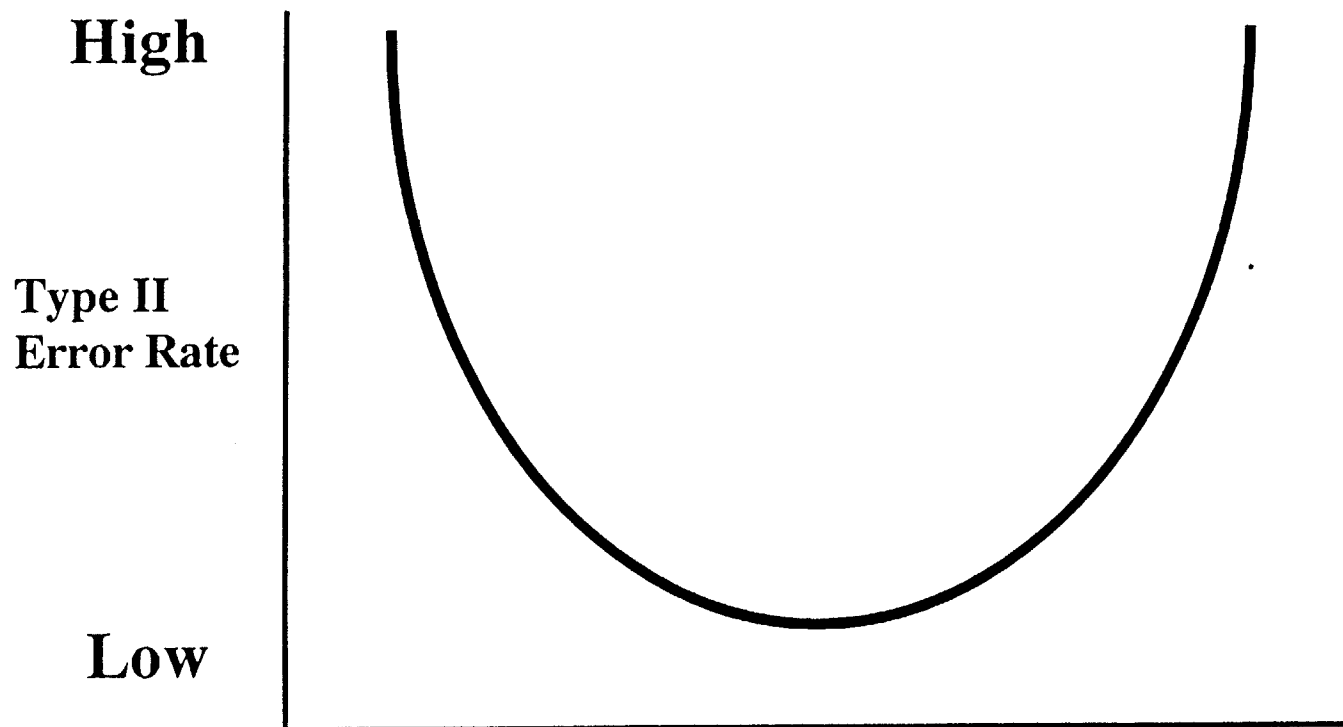
Medication Compliance

Outcome Measurement

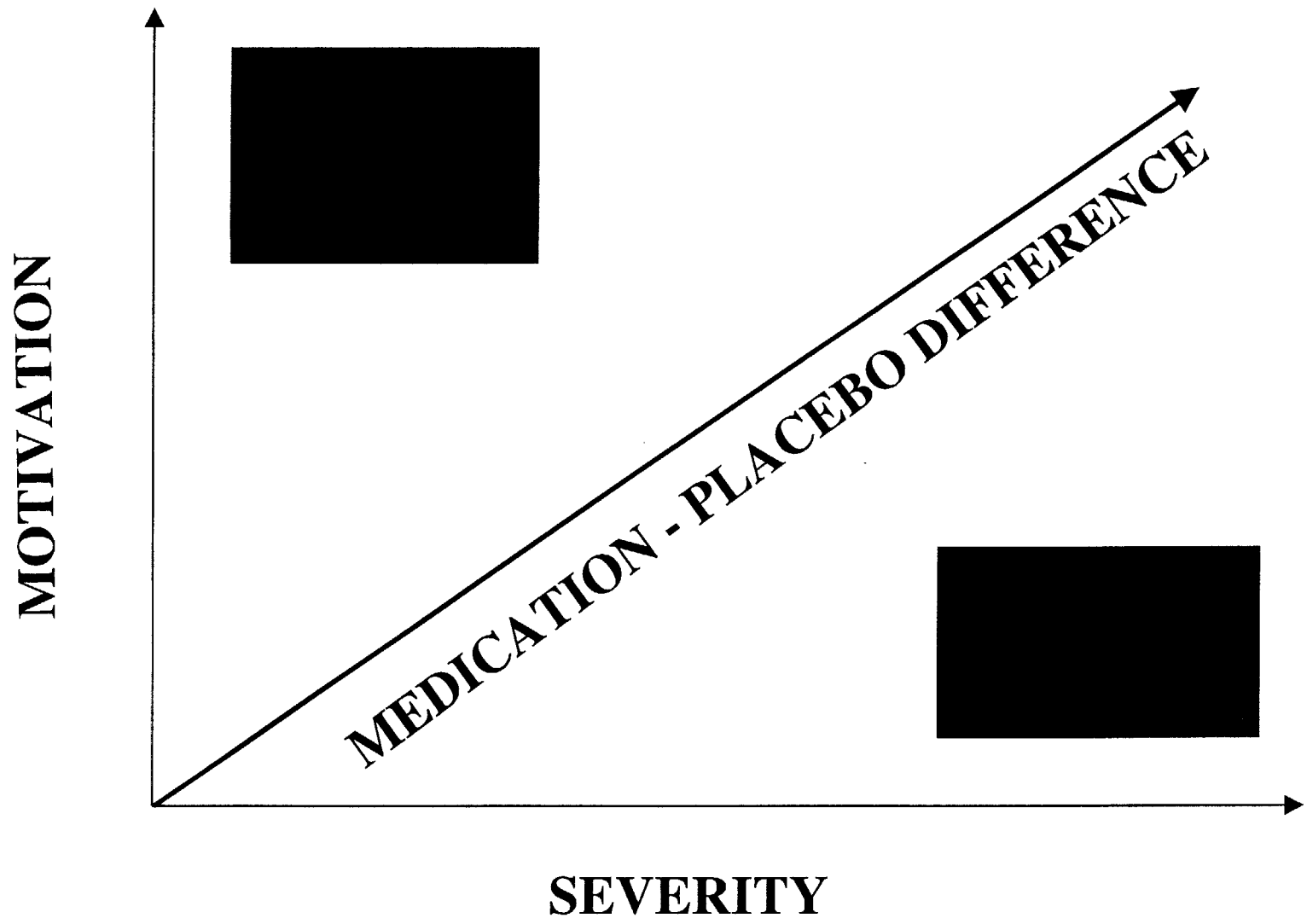
*Raymond Anton MD
Univ. of S. Carolina
Open Public Hearing*

350954

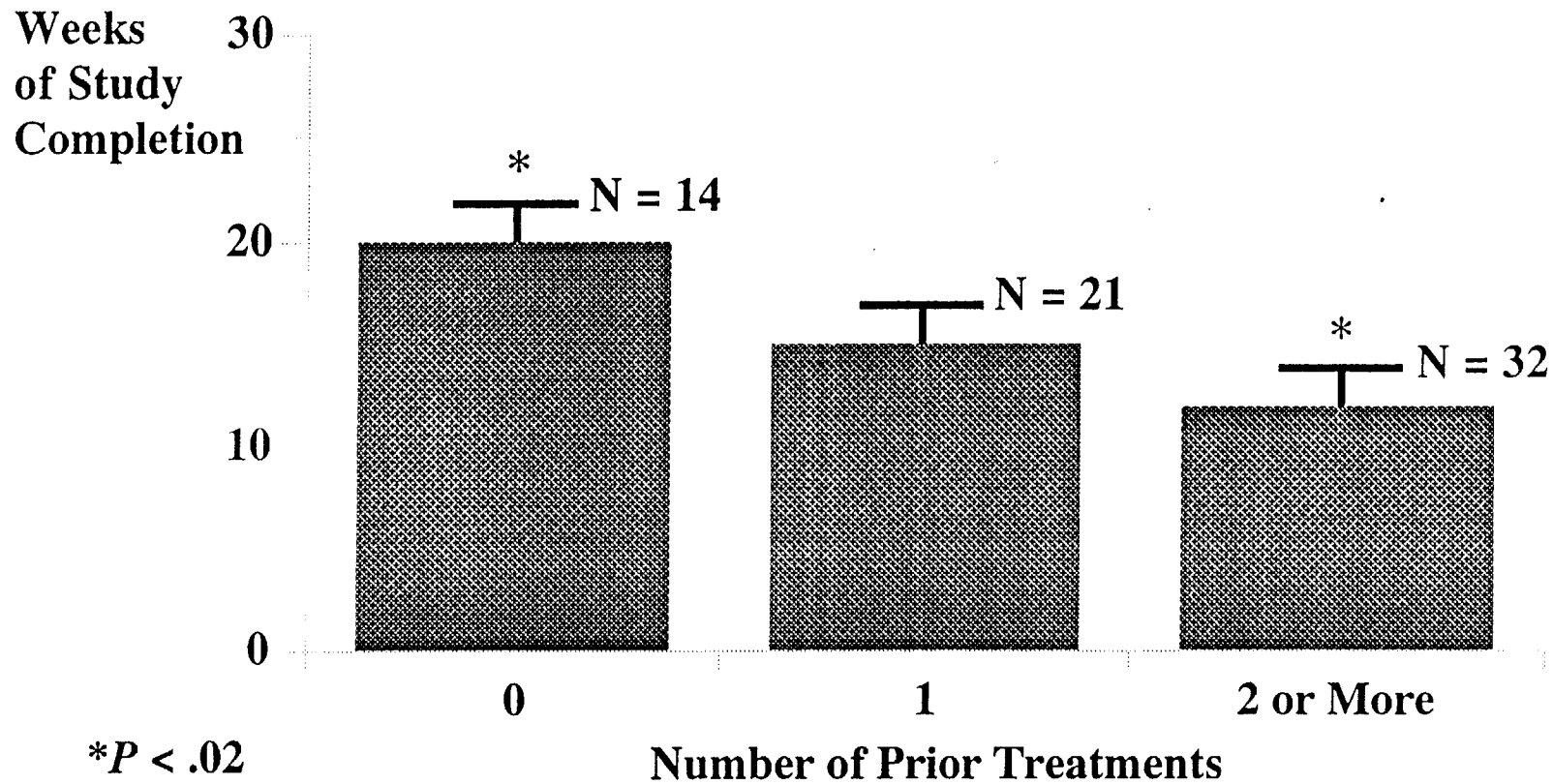
Alcoholism Pharmacology Trials



Severe Chronic	—————	Mild Early
Socially Unstable	—————	Socially Stable
Psychopathology	—————	No Psychopathology
No Ancillary Therapy	—————	Ancillary Therapy



Weeks in Study by Prior Treatment Frequency



Adapted from Moak D, Anton RF, et al. *Am J Addict.* 1993;2:39-47.

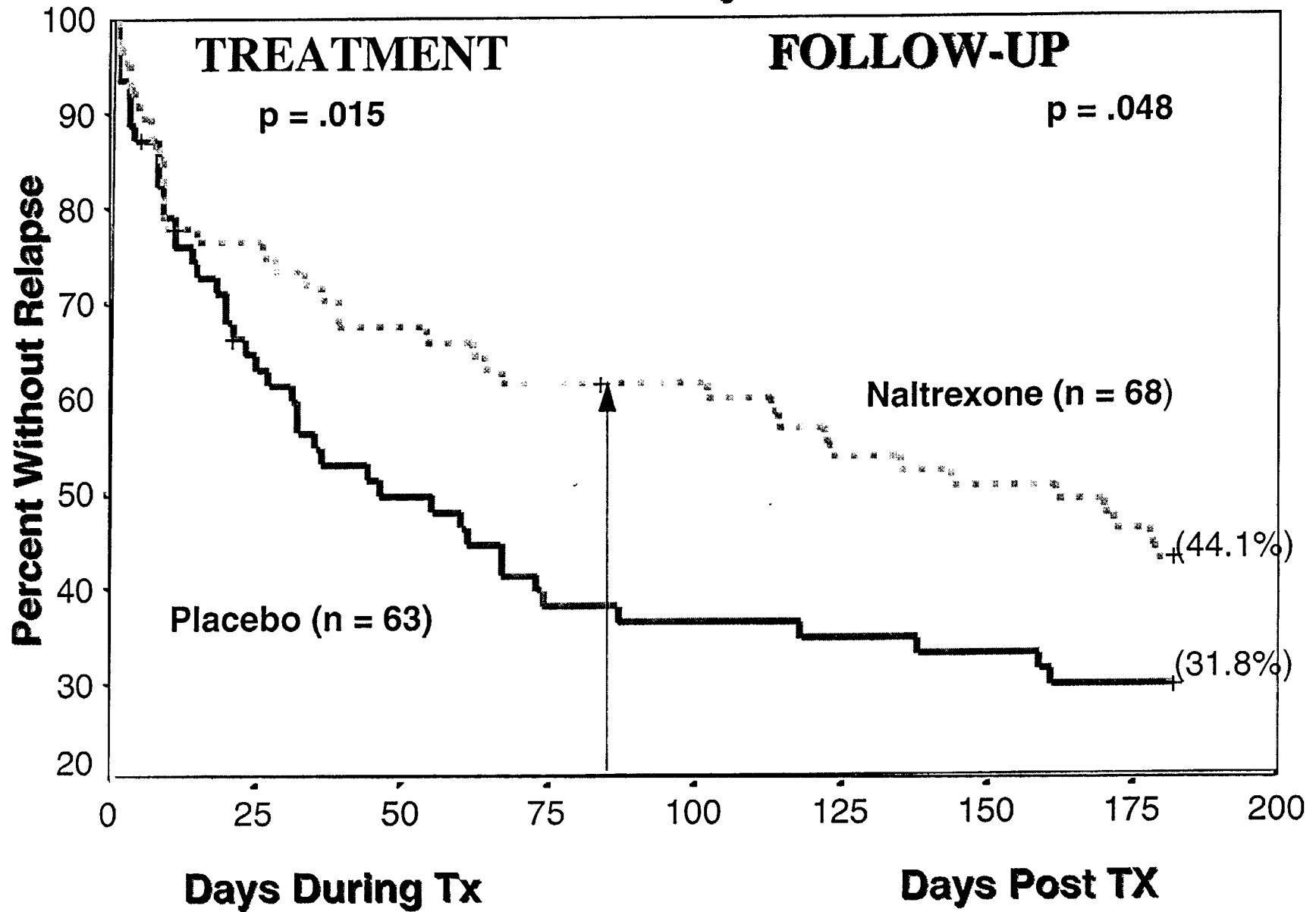
Agreement Between Pill Counts and Urine Riboflavin Levels (> 1500 ug / ml)

		Pill Count	
		Non - compliant	Compliant
Urine Riboflavin	Non - compliant	21 (22%)	15 (16%)
	Compliant	11 (12%)	47 (50%)

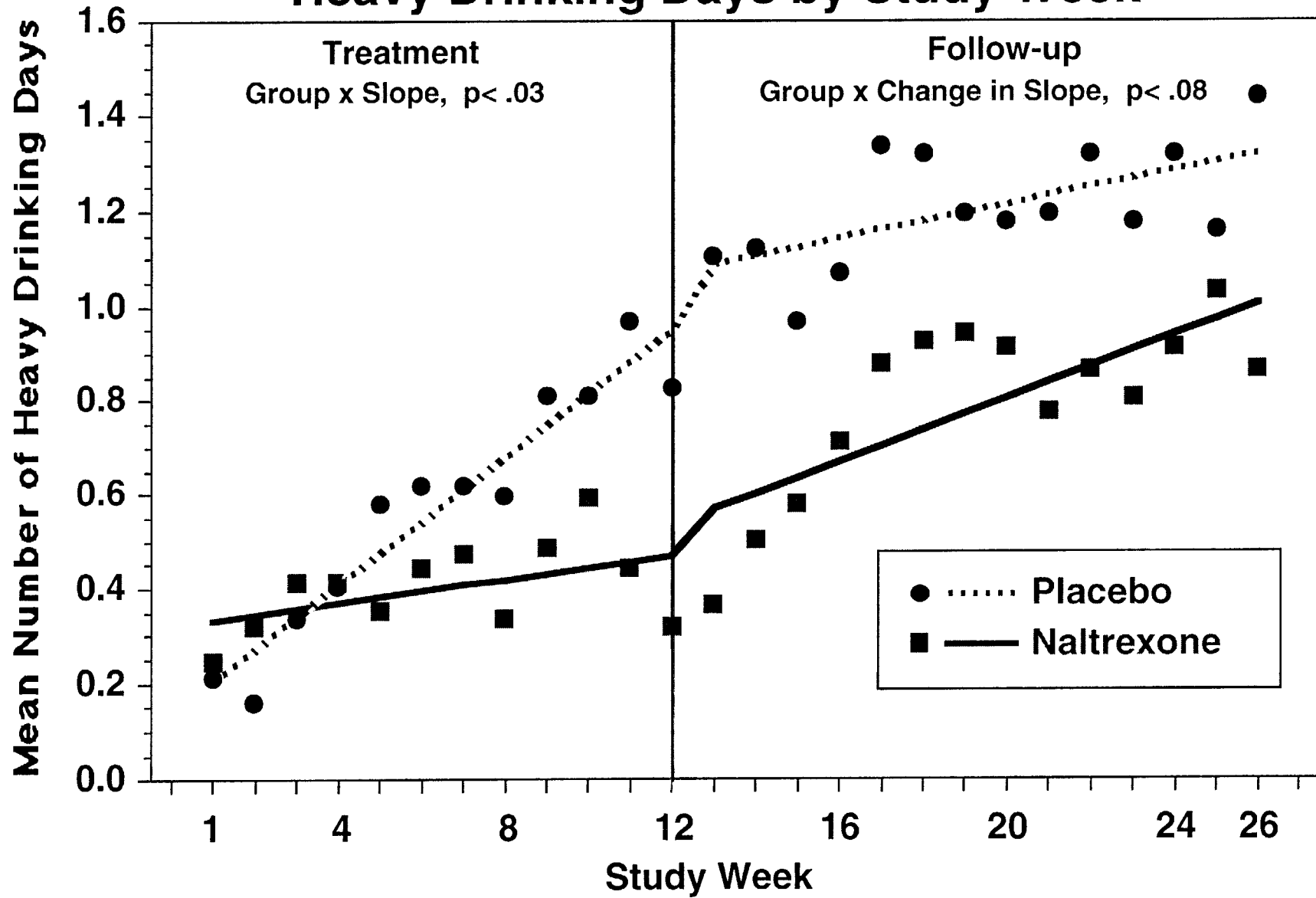
$\chi^2 = 15.3$ $p < 0.001$ Kappa = 0.40

73% agreement or 27% disagreement

All Subjects



Heavy Drinking Days by Study Week



Predictions based on piecewise random regression mode.