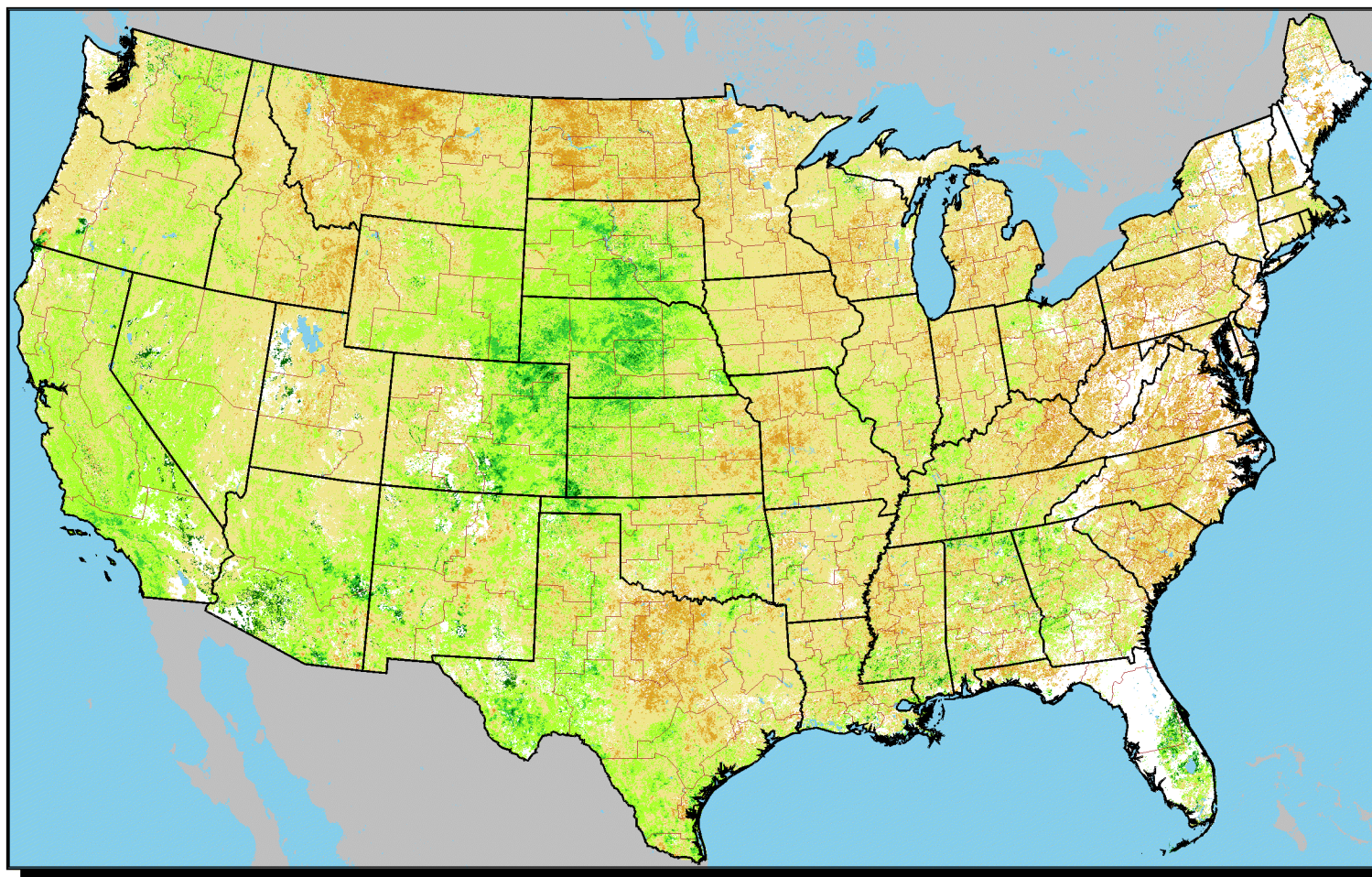


Vegetation Condition Percent Change: 2003 ÷ 2002
Period 32 (7/30 - 8/12)

**No Water Vapor
Correction Applied**



Percentage

- < = 74
- 75 - 84
- 85 - 94
- 95 - 104
- 105 - 114
- 115 - 124
- > = 125
- Clouds/Snow

Agricultural Statistics Districts

1:15,000,000

Original Imagery: NOAA-16 AVHRR
Resolution: 1 Kilometer
Composite Imagery: USGS EROS Data Center
Questions or Comments Call (703)235-5218

For Additional Images Please See:
<http://www.nass.usda.gov/research>

0 100 200 300 400 500 Miles