

National Weekly Cattle And Beef Summary

Des Moines, Iowa

Mon Sep 15, 2008

USDA Livestock & Grain Market News

For Week Ending:

9/13/2008

This Week

Prior Week

Last Year

[LM_XB463](#)

	<u>This Week</u>	<u>Prior Week</u>	<u>Last Year</u>
CUTOUT VALUES	156.59	157.05	146.02
Primal Rib	219.36	216.01	223.13
Primal Chuck	138.47	137.33	114.00
Primal Round	152.12	142.32	127.37
Primal Loin	198.35	202.78	210.19
Primal Brisket	106.69	107.12	94.63
Primal Short Plate	117.62	119.59	93.35
Primal Flank	95.27	96.25	77.02

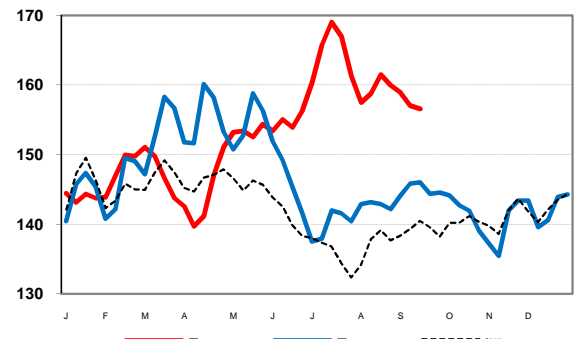
WEEKLY VOLUME BREAKDOWN

Total Loads	8195	7307	7791
Prime Loads	40	35	37
Branded Loads	683	563	547
Choice Loads	2140	1866	2039
Select Loads	1825	1505	1798
Ungraded Loads (cuts, trims, grinds)	3508	3339	3370

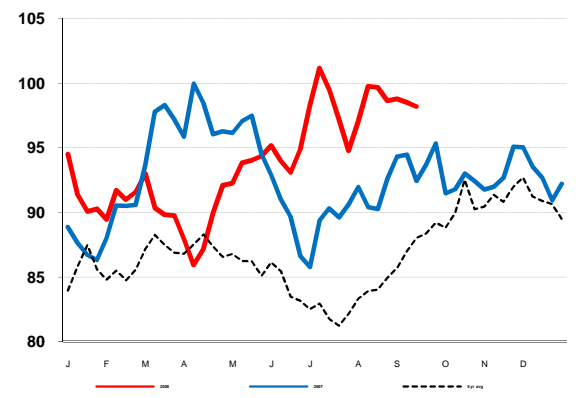
TYPE OF SALES

Negotiated Sales 0-21 Day	3586	3221	3666
Negotiated Sales 21+ Day	1165	893	908
Formula Sales	3184	2970	3062
Forward Contract Sales	260	222	156
Domestic Sales	7320	6638	7216
NAFTA Exports	201	342	427
Overseas Exports	673	327	149

Weekly Comprehensive Cutout Value



5 Area Weekly Live Steer Price

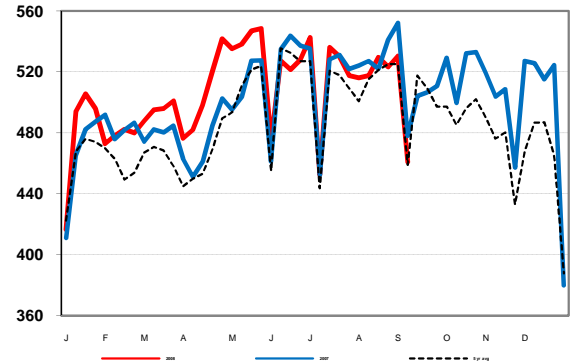


[LM_CT150](#)

5 AREA WEEKLY WEIGHTED CATTLE PRICE

Live Steer	98.21	98.54	92.43
Live Heifer	98.46	98.78	92.61
Dressed Steer	152.33	154.43	145.52
Dressed Heifer	152.00	155.01	145.97

Weekly Beef Production



[NW_LS441](#)

WEEKLY USDA BY-PRODUCT DROP VALUE (STEER)

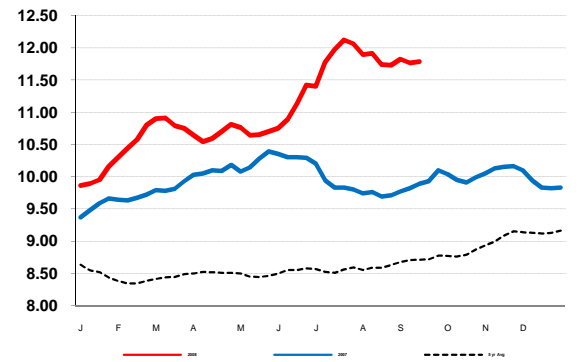
11.78

[SJ_LS712](#)

BEEF PRODUCTION

	(Estimate)	(Estimate)	(Actual)
Slaughter	657,000	593,000	645,000
Live Weights	1288	1285	1290
Dressed Weights	784	783	788
Beef Production (mil lbs)	513.7	463.2	506.4

Weekly Steer Drop Value



[NW_LS196](#)

NATIONAL STEER & HEIFER ESTIMATED GRADING PERCENT

For Week Ending:

Aug 30, 2008

Total Quality and Yield Grades for All Regions

Prime	2.29%	2.42%	2.21%
Choice	55.57%	55.24%	52.09%
Select	34.21%	33.94%	35.86%
Yield only	3.20%	3.26%	4.07%

Percentage by Class

Steer	49.53%	50.55%	53.17%
Heifer	29.49%	28.88%	29.23%
Dairy Cow	8.25%	8.02%	7.21%
Other Cow	10.52%	10.37%	8.58%
Bulls	2.22%	2.18%	1.81%

USDA Livestock & Grain Market News

Des Moines, Iowa

Phone: 515-284-4460

Email: desm.lgmn@usda.gov

www.ams.usda.gov/LSMarketNews