

National Weekly Cow and Boneless Beef Summary

Des Moines, Iowa

Friday, September 19, 2008

USDA Livestock & Grain Market News

[BONELESS PROCESSING BEEF & BEEF TRIMMINGS - LM\\_XB460](#)

	National		Central US	
	Loads	Wt Avg \$	Loads	Wt Avg \$
Fresh 92-94%	10.1	178.65	5.3	176.19
Fresh 90%	73.6	170.32	64.9	169.92
Fresh 85%	25.4	159.25	18.9	159.68
Fresh 81%		140.00	3.5	140.00
Fresh 75%	4.9	133.87	3.5	135.58
Fresh 73%	4.5	125.69	4.5	125.69
Fresh 65%	18.7	116.96	12.9	117.43
Fresh 50%	70.7	92.37		

	Loads	Wt Avg \$	Change
<a href="#">100% LEAN - LM_XB461</a>			
Cutter Cow Carcass Cutout Value		136.65	(1.52)
Inside Rounds - Combo	8.5	248.02	(0.92)
Inside Rounds - Boxed	2.7	253.68	1.72
Outside Rounds	5.4	226.67	(3.78)
Eye of Rounds	1.7	230.30	(0.72)
Flats and Eyes - Combo	11.4	231.01	(1.45)
Striploins	5.6	235.95	(0.04)
S.P.B. - Combo	18.5	226.72	(3.50)

	Str/Hfr		Str/Hfr/Cow	
	Loads	Wt Avg \$	Loads	Wt Avg \$
Fresh 73%	40.0	144.18	17.1	146.16
Fresh 75%	2.3	149.88		
Fresh 81%	40.5	152.54	30.6	158.42
Fresh 85%	2.3	189.53	7.3	170.52
Fresh 90%	5.7	185.89	5.0	191.78
Fresh 93%	11.2	192.77		
Ground Chuck	19.6	158.89	9.1	166.98
Ground Round	10.0	179.97	6.3	190.85
Ground Sirloin	1.0	237.41	8.2	221.02

[ESTIMATED CATTLE SLAUGHTER - SJ\\_LS710](#)

Week to Date (est)	686,000	Week ending	9/13/08
Same Period Last Week (est)	657,000	Sltr Cows	3,101
Same Period Last Year (act)	647,000	Sltr Bulls	1,285
		YTD Cows	103,250
		YTD Bulls	30,742
Cow/Bull Total through Thursday	100,000	<a href="#">Canada Live Cow Prices - \$US</a>	
Previous Wk Total Cow & Bull Est	141,000	Ontario	51.15
		Alberta	43.00

[BEEF PRODUCTION - SJ\\_LS711](#)

	9/6/2008	8/30/2008	9/8/2007
Cow & Bull Slaughter	142,083	142,083	136,278
Year to Date Totals	4,557,609	4,437,241	4,158,184

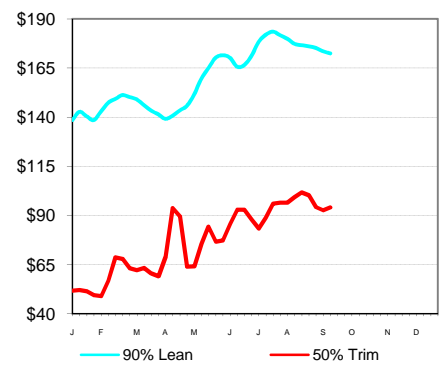
[COW BY-PRODUCT DROP - NW\\_LS444](#)

	cwt live	10.10	0.01
	cwt dressed	24.39	unch.

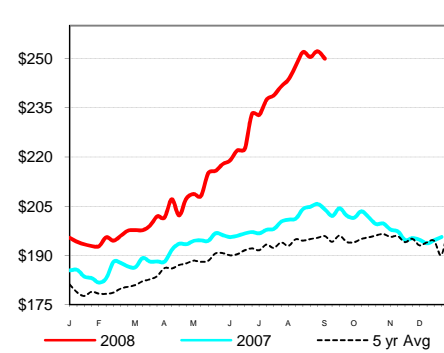
**Live Auction Prices**

	Lean 85-90%	Bng. 80-85%	Brk. 75-80%	Bull 92%
<a href="#">Washington - ML_LS795</a>				
<a href="#">Montana - BL_LS754</a>	44.00	48.00	52.13	60.25
<a href="#">Colorado-Ft. Collins, CO</a>	48.50	55.00	57.25	65.50
<a href="#">South Dakota - SF_LS115</a>	52.25	58.50	62.38	71.25
<a href="#">Iowa - NW_LS785</a>	41.75	53.00	60.00	62.25
<a href="#">Missouri -Joplin- JC_LS174</a>	46.75	55.50	55.75	72.50
<a href="#">OK - Ok City- KO_LS151</a>	48.44	58.50	57.38	71.00
<a href="#">TX -San Angelo-SA_LS150</a>	51.00	55.00	53.50	70.75
<a href="#">New Mexico-CV_LS150</a>	51.02	58.33		70.06
<a href="#">Alabama - MG_LS145</a>	50.00	59.50	55.25	70.75
<a href="#">Georgia - TV_LS145</a>	54.15	58.05	57.27	70.61
<a href="#">Louisiana - BG_LS145</a>	48.75	59.50	57.00	66.75
<a href="#">Kentucky - SV_LS145</a>	45.35	54.24	53.80	67.14
<a href="#">PA-New Holland-LN_LS145</a>	55.50	59.50	62.50	74.00

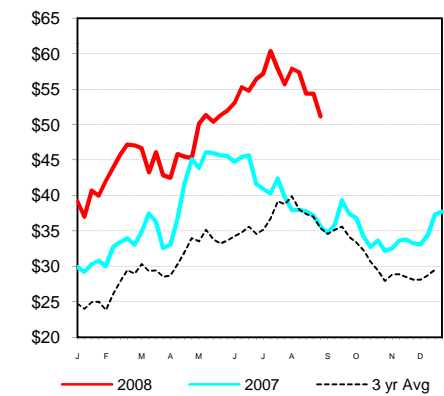
2008 Weekly - 90% Lean vs 50% Lean



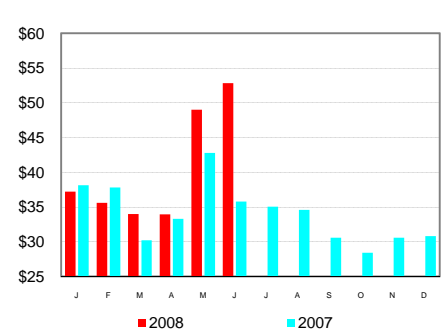
100% Lean - Inside Rounds



Ontario Live Cow Prices



Monthly Spread Between 90% Bnls and Lean 90% Live Price



USDA Livestock & Grain Market News

Des Moines, Iowa  
 Phone: 515-284-4460  
 Email: [desm.lgmn@usda.gov](mailto:desm.lgmn@usda.gov)  
[www.ams.usda.gov/LMarketNews](http://www.ams.usda.gov/LMarketNews)