

**AUCTION SUMMARY**

[http://www.ams.usda.gov/mnreports/sf\\_ls754.txt](http://www.ams.usda.gov/mnreports/sf_ls754.txt) 4,400 hd Thursday  
Presho, SD

**PRESHO LIVESTOCK AUCTION**

Feeder Steers	600-700 lbs	pkg 114.50	Feeder Heifers	600-700 lbs	
Medium &	700-800 lbs	105.25-110.00	Medium &	700-800 lbs	99.75-106.00
Large #1	800-900 lbs	103.85-108.60	Large #1	800-900 lbs	100.00-105.60
	900-1000 lbs	102.60-105.85		900-1000 lbs	99.00-102.10
	1000-1100 lbs	100.25-101.25		1000-1100 lbs	98.25-99.50

[http://www.ams.usda.gov/mnreports/dc\\_ls754.txt](http://www.ams.usda.gov/mnreports/dc_ls754.txt) 2,992 hd Thursday  
Salina, KS

**FARMERS & RANCHERS COMMISSION CO.**

Feeder Steers	400-500 lbs	pkg 122.00	Feeder Heifers	400-500 lbs	
Medium &	500-600 lbs	115.50-121.00	Medium &	500-600 lbs	105.00-109.00
Large #1	600-700 lbs	111.00-112.25	Large #1	600-700 lbs	101.00-104.25
	700-800 lbs	108.00-110.50		700-800 lbs	101.00-104.25
	800-900 lbs	105.00-107.85		800-900 lbs	96.50-100.25

[http://www.ams.usda.gov/mnreports/sv\\_ls166.txt](http://www.ams.usda.gov/mnreports/sv_ls166.txt) 1,497 hd Thursday  
Guthrie, KY

**KY-TENN LIVESTOCK MARKET**

Feeder Steers	400-500 lbs	100.50-111.00	Feeder Heifers	400-500 lbs	93.50-96.50
Medium &	500-600 lbs	95.00-103.50	Medium &	500-600 lbs	86.00-96.50
Large #1-2	600-700 lbs	92.50-96.75	Large #1-2	600-700 lbs	83.50-86.25
	700-800 lbs	pkg 90.00		700-800 lbs	74.00-80.50
	800-900 lbs	pkg 85.00		800-900 lbs	pkg 74.50

[http://www.cme.com/trading/dta/hist/daily\\_settle\\_prices.html?type=com](http://www.cme.com/trading/dta/hist/daily_settle_prices.html?type=com) Thursday

**CHICAGO MERCANTILE EXCHANGE LIVESTOCK FUTURES SETTLEMENT**

Live Cattle		Change	Feeder Cattle		Change
Oct	100.50	(2.10)	Sep	107.30	(0.70)
Dec	101.72	(2.32)	Oct	104.17	(2.12)
Feb	101.70	(2.05)	Nov	103.82	(2.05)

<http://www.cbot.com/cbot/pub/page/0,3181,958,00.html> Thursday

**CHICAGO BOARD OF TRADE GRAIN FUTURES SETTLEMENT**

Corn		Change	Soybeans		Change
Dec	5.27 1/4	(26 3/4)	Nov	11.16	(23)
Mar	5.43 1/4	(26 3/4)	Jan	11.29 3/4	(23 1/2)
May	5.52 1/2	(27)	Mar	11.42 1/4	(23 1/4)

[http://www.ams.usda.gov/mnreports/sj\\_gr710.txt](http://www.ams.usda.gov/mnreports/sj_gr710.txt)

**KANSAS CITY BOARD OF TRADE WHEAT FUTURES SETTLEMENT**

Wheat		Change
Dec	7.61 1/2	27
Mar	7.80 1/2	27 1/4
May	7.88 1/2	34 3/4

[http://www.ams.usda.gov/mnreports/lm\\_ct100.txt](http://www.ams.usda.gov/mnreports/lm_ct100.txt) Thursday

**5 AREA WKLY ACCUMULATED WTD AVG SLAUGHTER CATTLE PRICE**

	Head Count	Avg Weight	Avg Price
Live Steer	1,305	1,268	98.52
Live Heifer	1,710	1,239	96.23
Dressed Steer	13,617	882	150.52
Dressed Heifer	6,950	780	151.24

[http://www.ams.usda.gov/mnreports/lm\\_xb403.txt](http://www.ams.usda.gov/mnreports/lm_xb403.txt) Thursday

**DAILY ESTIMATED BOXED BEEF CUTOUT VALUES**

Choice	Select	Choice Cuts	114	Loads
<b>600-900#</b>	<b>600-900#</b>	Select Cuts	77	Loads
160.77	154.33	Trimming	24	Loads
(0.44)	0.06	Grinds	54	Loads

[http://www.ams.usda.gov/mnreports/sj\\_ls710.txt](http://www.ams.usda.gov/mnreports/sj_ls710.txt)

**ESTD DAILY CATTLE SLAUGHTER**

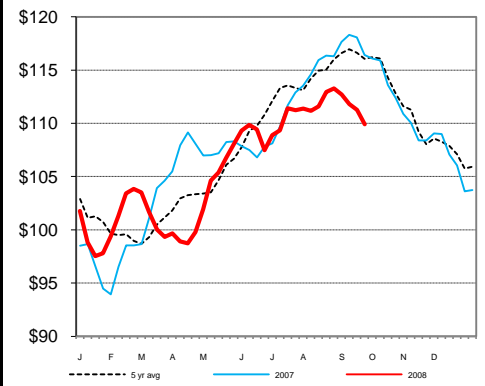
Thu (est)	122,000
Week Ago (est)	128,000
Year Ago (act)	128,000
Wk to date (est)	503,000
Last Week (est)	510,000
Last Year (act)	505,000
Previous Day Estimated:	Steer and Heifer 102,000 Cow and Bull 25,000

[http://www.ams.usda.gov/mnreports/ln\\_ls142.txt](http://www.ams.usda.gov/mnreports/ln_ls142.txt)

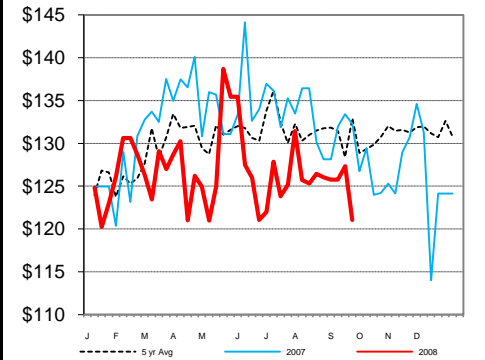
**SLAUGHTER COW MARKET**

New Holland Sales Stables		
Thursday	Pct Lean	Price
Breaking	70-80	61.00-64.00
Boning	80-85	58.00-61.00
Lean	85-90	54.00-58.00
Wednesday		

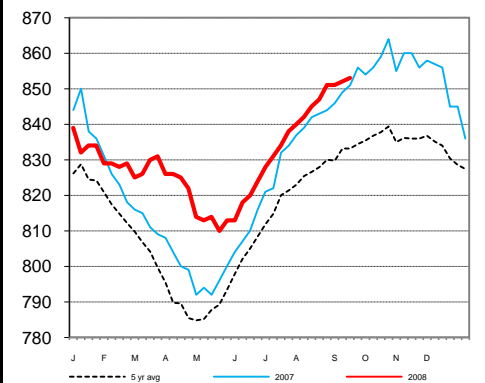
**CME Feeder Cattle Index**



**Oklahoma City 400-500 lb Steer Price**



**Average Dressed Steer Weight**



**Weekly Cattle Slaughter**

