

[LM_XB403](#)

DAILY ESTIMATED CUTOUT VALUES

	Choice 600-900#	Select 600-900#	Choice/Select Spread
Cutout Values	159.80	153.08	6.72
Change from Prior Day	(0.97)	(1.25)	
Primal Rib	215.06	208.03	
Primal Chuck	143.85	143.74	
Primal Round	143.85	141.17	
Primal Loin	205.34	180.76	
Primal Brisket	108.75	106.60	
Primal Short Plate	118.12	120.46	
Primal Flank	98.18	93.83	
			Load Count:
			Total 258
			Choice 105
			Select 103
			Trimmings 19
			Grinds 31

Fresh 50% Trimmings: 19 Loads @ 89.90

[NW_LS441](#)

USDA BY-PRODUCT DROP VALUE (STEER)

Value: 11.64 Change: unch

[LM_CT100](#)

5 AREA WEEKLY ACCUMULATED WEIGHTED AVG CATTLE PRICE

	Head Count	Avg Weight	Avg Price
Live Steer	40,535	1,328	98.24
Live Heifer	37,984	1,199	98.37
Dressed Steer	27,553	881	150.72
Dressed Heifer	14,176	790	151.08

[SJ_LS710](#)

ESTIMATED DAILY CATTLE SLAUGHTER

		Saturday
Today (est)	121,000	58,000
Week Ago (est)	111,000	36,000
Year Ago (act)	119,000	23,000
Week to Date (est)	628,000	686,000
Same Period Last Week (est)	621,000	657,000
Same Period Last Year (act)	624,000	647,000
Previous Day Estimated	Steer and Heifer 101,000 Cow and Bull 25,000	

[SJ_LS712](#)

	W/E 9/20/2008 (Estimate)	Previous week (Estimate)	Last Year (Actual)
BEEF PRODUCTION			
Slaughter	686,000	657,000	647,000
Live Weights	1290	1288	1295
Dressed Weights	785	784	791
Beef Production (millions of pounds)	537.5	513.7	509.6

USDA BEEF CARCASS PRICE EQUIVALENT INDEX VALUE

	Choice 600-900#	Select 600-900#	Dressing percent:	
			Steer	Heifer
Values	147.79	140.61	63.62	63.72
Change	(0.33)	(0.46)		

[LM_XB405](#)

USDA NATIONAL CUTTER COW CARCASS CUTOUT

134.82 Change (2.10) 90% lean: 167.04

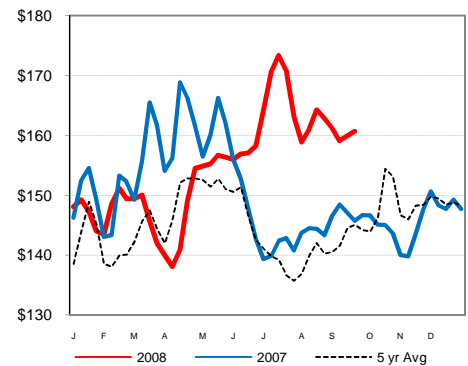
[CME LIVE CATTLE](#)

CME LIVE CATTLE	High	Low	Close	Change
October	101.90	100.60	101.55	1.05
December	103.30	101.60	103.25	1.52
February	103.30	101.87	103.17	1.47

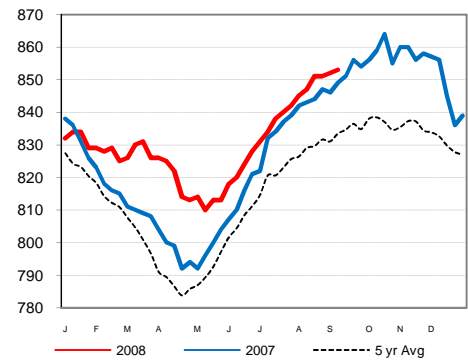
[CME FEEDER CATTLE](#)

CME FEEDER CATTLE	High	Low	Close	Change
September	108.30	106.90	108.25	0.95
October	106.05	104.75	105.85	1.67
November	105.50	104.20	105.30	1.47

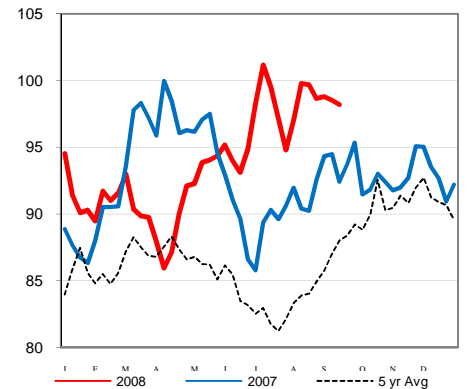
Weekly Choice Cutout



Weekly Steer Dressed Weights



5 Area Weekly Wtd Avg Steer Price



Weekly Ch/Se Spread

