

CONTINUING EDUCATION PROGRAM
FOR
NATURAL RESOURCE PROFESSIONALS

Fiscal Year 2008
Calendar Year October 2007 to September 2008
SCHEDULE OF WORKSHOPS
USDA Forest Service



20th Anniversary!



We can't solve problems by using the same kind of thinking we used when we created them.
~ Albert Einstein, Physicist

Sponsored by: Watershed, Fish, Wildlife and Air (WFW)
USDA Forest Service



The Program

Mission: Serving the People Who Care for the Land

This continuing education program is sponsored by the USDA Forest Service – Watershed, Fish, Wildlife and Air staff (WFW). The Continuing Education program (CE-WFW) goal is enhancing the productivity and effectiveness of professionals working with management of watersheds, terrestrial and aquatic habitats. Though targeted for natural resource professionals everyone is welcome. Be aware the workshops are presented at a university graduate level.

The WFW Continuing Education program was initiated in 1987, and is the continuing education program described in this brochure. Consisting of graduate-level workshops hosted by universities, agencies and institutions, the workshops increase the productivity and effectiveness of experienced natural resource professionals and technicians. They provide knowledge and skills needed to become leaders in integrated resource management. **These workshops are rigorous (e.g., interactive exercises, tests, pre-work and projects) and will require work.** Instructors for each workshop are leaders in their fields and include university professors, experienced natural resource managers and researchers, and public sector.

For a detailed explanation of the Continuing Education WFW program please see our web site (www.fs.fed.us/biology/education). There are two levels in the CE program. **Level I** is Technical Leadership. It is aimed at GS 5-9 and those new to their career, but it is not exclusive. Technical Leadership includes such workshops as ‘Wildlife Habitat & Plant Management’ and ‘Conservation Biology & Restoration Ecology’. **Level II** is Program Leadership consisting of three workshops – ‘Leadership & Communication’, ‘Natural Resource Policy, Values & Economics’, and ‘Program Management’. You are welcome to repeat any of the workshops over your career, as the content will always be updated. In addition to the workshops, a completed project is necessary to graduate. A project can be either the Program Plan developed in the Program Management workshop or a project negotiated with the National Program Leader.

Who is eligible? Eligible candidates include wildlife, fisheries, botany, hydrology, recreation, timber and other resource professionals with an education in wildlife, fisheries, plant management or related fields and generally 3 years experience in resource management. A few workshops are applicable to Technicians. Line officers are also encouraged to apply, as well as resource specialists from State, Tribal, Federal and other agencies. The ‘Leadership & Communications’ and ‘Plain & Simple! Document Writing’ workshops are applicable to everyone.

“To waken interest and kindle enthusiasm is the sure way to teach easily and successfully.”
~ Tryon Edwards quotes (American Theologian, 1809-1894)

Participants from diverse disciplines, other natural resource agencies, and private organizations are encouraged to apply for these workshops.



How to Apply

Forest Service Applicants. A ‘call for nominations’ goes out in May through each Region. Follow your Regional Coordinator’s instructions. If your Region sponsors limited tuitions, supervisors should forward nominations to their Regional Coordinator, following the Region’s nomination process. After selection by the Regional Office and confirmation by the Washington Office, candidates should submit payment directly to the vendors (check, credit card, or SF182). The host university or institution is the vendor. **All Forest Service employees fill out a SF182 in AgLearn.** Self-funded individuals can register directly in AgLearn. AgLearn does **not** automatically process payment; participants must submit payment through the normal fiscal processes.

Registering through AgLearn. USDA Employees can register through AgLearn. To find the CE-WFW workshops, do a “simple search” using keywords “WO 2600” and uncheck the box “Exact Phrase”. [See the last page of this brochure for detailed information.](#) If you cannot access AgLearn you probably need to fix your eAuthentication account. eAuthentication is not part of AgLearn. It is a firewall to a number of USDA online programs. It is important to have your eAuthentication squared away. Be sure your email and supervisor are correctly listed in your AgLearn profile (“Personal” tab/”Profile” link). Otherwise you will miss out on important email notifications. If you have difficulty accessing AgLearn please contact the National CE-WFW Program Leader.

Once confirmed, participants are obligated to pay the tuition. Confirmation will occur in September via letter or email from the Regional Office or AgLearn. **If a confirmed participant needs to withdraw he/she must immediately contact his/her Regional Coordinator for assistance. Once “confirmed”, when needing to withdraw, a substitute must be provided or pay fixed costs - unless waived by the vendor. Trying to withdraw from a workshop with only a few weeks notice will be difficult and is not recommended.** Every effort will be made to assist participants with their individual needs.

Tuition. Workshop tuitions **do not** cover meals or lodging. Limited tuition dollars are available through a few Regional offices during the nomination process. Most tuition dollars are currently allocated to individual Forests. Therefore, responsibility for payment of **all costs** (e.g., tuition and travel) rests solely with the nominating unit. If you miss the spring nomination period, contact your Regional Coordinator or the National Program Leader for assistance.

Non-Forest Service Applicants. Candidates from other countries, agencies, States, Tribes, private industry, or the public interested in enrolling should apply directly to the vendor of each workshop or contact the National Program Leader. Reduced tuitions are available for some workshops for Tribal Natural Resource Professionals. See our web site for additional information or contact the National Program Leader (www.fs.fed.us/biology/education).

PROGRAM LEADERSHIP

Leadership & Communications (LAC). Objectives: explain and discuss personal preferences for mentally processing information, making decisions, approaching tasks and interacting with others; demonstrate essential communication skills (e.g., writing/speaking); practice negotiation techniques; discuss models of leadership and management; improve team function and leadership; facilitate and manage meetings; demonstrate managing issues and communicating through the mass media; and develop a list of actions that will increase effectiveness and influence in the organization. Everyone can be a leader, regardless of one's position in the organization, by improving leadership and communication skills. VPI offers a traveling version of Leadership & Communications. See 'Workshops on Demand' for additional information.

AgLearn Keywords: 2600 wo leadership communications

Virginia Polytechnic Institute and State University

~~January 29—February 7, 2008~~ **CANCELLED**

Travel on 1/28 & 2/8

Blacksburg, VA

Tuition \$1,800

March 11 – 20, 2008

Travel on 3/10 & 3/21

Mt. Hood, OR

Tuition \$1,800

Dr. Steve McMullin, Department of Fisheries and Wildlife Science,
Virginia Polytechnic Institute and State University, Blacksburg, VA 24061-0321

smcmulli@vt.edu

540-231-8847

Leadership & Communications: Advanced (LAC/A). Objectives: demonstrate techniques for challenging the process, inspiring a vision, enabling other people, modeling and encouraging good leadership; demonstrate leading and managing in conflict; and demonstrate working with 'difficult people'. This workshop will prepare participants to step up to 'the leadership challenge' using a 360-degree leadership assessment tool and Step II of the Myers-Briggs Psychological Type Instrument. Participants should be familiar with their Myers-Briggs type.

AgLearn Keywords: 2600 wo leadership communications

Virginia Polytechnic Institute and State University

February 19 – 22, 2008

Travel on 2/18 – 2/22

Blacksburg, VA

Tuition \$995

Dr. Steve McMullin, Department of Fisheries and Wildlife Science,
Virginia Polytechnic Institute and State University, Blacksburg, VA 24061-0321

smcmulli@vt.edu

540-231-8847

Natural Resource Policy, Values, and Economics (NRPVE). Objectives: describe factors involved in policy making; explain the basic role of economics in natural resources management and ecosystem services; and demonstrate comprehension and appreciation of human value systems underlying policy making and economics. Discussion strongly relates to activities on National Forests (and other land ownerships pending participant interests) via case study and interactive exercises. Starts early Monday and concludes mid-afternoon on Friday.

AgLearn Keywords: 2600 wo policy values economics

**Portland State University, Public Admin School of Government
May 5-9, 2008**

**Portland, OR
Tuition \$1200**

Dr. Craig Shinn, Public Administration School of Government, Portland State University, PO Box 751, Portland, OR 97207

shinnc@pdx.edu

503-725-8220

Administrative Workshop Contact: Christine Jacobs

cjacobs@pdx.edu

503-725-5114

The FY09 workshop is offered at University of Georgia, Athens. PSU and UGA offer workshops in alternate years.

Program Management (PMB). Objectives: demonstrate skills to effectively develop and implement a Program Plan on participant home units. Participants draft a Program Plan covering goals, objectives, elements, personnel development, budget, marketing, and tiering to Forest Plans. Draft plan is handed in for review at the end of workshop. Focus on motivating people to think programmatically. Target audience is journey-level natural resource professionals responsible for program development.

AgLearn Keywords: wo 2600 program management

**Utah State University
April 28 – May 1, 2008**

**Logan, UT
Tuition \$350**

Shelly Witt and Dr. Brett Roper, Aquatic, Watershed and Earth Resources Department, Utah State University, Logan, UT 84322-5210

switt@cc.usu.edu

435-881-4203 (Witt)

One (1) graduate student credit is available.

Program Management - Round II (PMII). After attending the original workshop in a previous year (above), return to finish writing or update your document. Individuals join in the “original” PMB workshop per their individual needs, continue to work on their program plan, receive and personal help from instructors. AgLearn Keywords: wo 2600 program management

April 28 – May 1, 2008

Tuition is \$50

TECHNICAL LEADERSHIP

Multi-disciplinary -

Plain & Simple! Document Writing (PSDW). Objectives: write clear, concise analytical documents readily understood by the average reader; effectively communicate technical and scientific information to a variety of audiences. Participants use laptops simulating current editing practices. Designed for natural resource professionals writing letters, analytical documents, biological assessments and evaluations, NEPA documents and other types of documents, but **open to everyone**. During the workshop participants edit their documents, leaving with improved products. Bring a laptop.

AgLearn Keywords: wo 2600 plain simple writing

Hosted in collaboration with the USFS Ecosystem Management Coordination staff.

Jud Monroe, Environmental Planning & Documentation

April 8–10, 2008 CANCELLED

Tuition \$240*

Milwaukee, WI

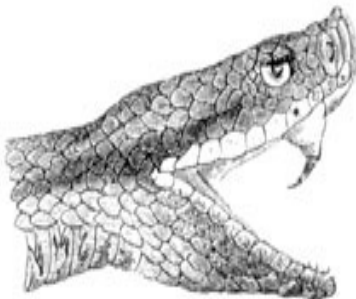
Dr. Jud Monroe, Environmental Planning & Documentation, San Anselmo, CA

jmonroe@pacbell.net

415-453-6546

Society credits available (AFS and TWS).

**Tuition is based on a sliding scale pending total number of attending participants; 26 or more participants will reduce the tuition to \$180/person. Tuition will not exceed \$240/person.*



You have to keep a dozen of your favorite problems constantly present in your mind, although by and large they will lay in a dormant state. Every time you hear or read a new trick or a new result, test it against each of your twelve problems to see whether it helps. Every once in a while there will be a hit, and people will say: "How did he do it? He must be a genius!"

~ Richard Feynman



Policy & Legal Aspects of Endangered Species Management (PLA). Objectives: explain policy and legal aspects of managing threatened, endangered and sensitive species; integrate into management practices with special emphasis on agency consultation and recovery obligations under Section 7 of the ESA. Focus on the law, policies and administrative practices from the perspective of field biologists and other specialists. **Intro** - regular workshop. **Advanced** - More in-depth and specific than 'Intro' with application to home unit projects. Terrific for people who have "been doing ESA for decades." Interactive lectures, discussions, and activities allow participants to learn from each other as well as leading experts. AgLearn Keywords: wo 2600 policy legal endangered species

Lewis and Clark Law School & College

Intro: ~~October 15 - 18, 2007 (FY08)~~

Advanced: March 10 - 13, 2008

Portland, OR; Law School campus

CANCELLED

Tuition \$885

Tuition \$785

Janice Weis, J.D., Director, Environmental and Natural Resources Law Program,
Lewis & Clark College, 10015 SW Terwilliger Blvd., Portland, OR 97219-7899
jweis@lclark.edu 503-768-6649 FAX: 503-768-6671

Administrative Contact: Linda D'Agostino lindad@lclark.edu 503-768-6784

Endangered Species Act for Line Officers (ESAL). Objective: explain policy, legal and administrative aspects of managing threatened, endangered and sensitive species. Designed for line officers and decision makers. Focus on ESA provisions and other laws governing species management, agency policies, procedures, and taking action to prevent listings. Emphasis on agency and line officer obligations for consultation and recovery under the ESA. Interactive lectures, discussions, activities and field trips are used to facilitate learning. Bring a home unit situation for group discussion. AgLearn Keywords: wo 2600 endangered species line.

Lewis & Clark Law School & College

May 5 - 8, 2008

Key West, FL

Tuition \$995

Lin Harmon, J.D., Assistant Director, Environmental and Natural Resource Law Program, Lewis & Clark College, 10015 SW Terwilliger Blvd., Portland, OR 97219-7899
lh@lclark.edu 503-768-6882

Administrative Contact: Linda D'Agostino lindad@lclark.edu 503-768-6784



Sandhill Cranes: Photo by Alan Dyck/Find-A-Photo

Water Resource Management for Line and Staff Officers (WRMLO). Objectives: To provide Line and Staff Officers with information essential for effective leadership of Forest Service water resource issues and activities. This course explores the demands, values, tensions and opportunities related to water and the management of National Forest System lands. Instructors include Forest Supervisors, researchers, lawyers, professors and representatives from the broader water user community. The course is focused on providing Forest Supervisors, District Rangers, Staff Officers, and Program Managers with foundations of law, philosophy and insight needed to strategically guide water resource and watershed management activities at the Forest level. Participants will be selected by the training cadre who will strive for diversity and nation-wide distribution of management experiences.

**USDA Forest Service
February 25 – 29, 2008**

**Sedonia, Arizona
Tuition \$500**

Cadre Coordinator: Ranotta McNair, Forest Supervisor, Idaho Panhandle National Forest
Administrative Support: Suzanne Endsley, Administrative Assistant, Idaho Panhandle NF
Information Contact: John Potyondy, USDA Forest Service, Stream Systems Technology Center
jpotyondy@fs.fed.us 970-295-5986

GIS and Remote Sensing (GIS)

Visit www.fs.fed.us/biology/education/workshops/gis/index.html for a more extensive vendor list. Contact vendors directly for dates, tuition and other information. Non-USFS are not listed in AgLearn.



Landscape Ecology (LE)

Objectives: examine landscape ecological relationships by defining the spatial scale (grain and extent), thematic content and resolution of the landscape in the context of specific objectives; how patterns develop on landscapes, including the three major agents of pattern formation: the physical template of environmental constraints, biotic processes and disturbances; characterize landscape patterns; quantify landscape dynamics; Explain the ecological implications of landscape pattern; explain how humans manage complex landscapes to achieve management objectives, including two themes central to ecology today: conservation biology and ecosystem management. This course focuses on the interplay between spatial pattern and process; specifically, how to characterize spatial pattern, where it comes from, why it matters, how it changes through time, and how we manage it. Project-based and place-based learning techniques focusing on applying to management situations. Hosted in collaboration with the USDA Forest Service Forestry/Timber-Silviculture Certification Program.

We will register you in AgLearn.

**University of Massachusetts
January 7-19, 2008**

**Missoula, MT
Tuition \$1700**

Dr. Kevin McGarigal, Associate Professor of Landscape Ecology, Department of Natural Resources Conservation, University of Massachusetts, Amherst, MA
Administration/Silv. Certification Contact: Glenda Scott, USFS, glscott@fs.fed.us
Registration Contact: Shelly Witt, USFS, switt01@fs.fed.us

Innovative Approaches to Wildlife and Highway Interactions (IAWH). Objectives: explain how highways affect terrestrial wildlife; demonstrate tools to identify and reduce highway-related impacts to wildlife; explain the highway planning process, including large scale connectivity analyses; and develop interdisciplinary networking opportunities. Designed for both resource biologists and engineers, and taught by both. Topics include an overview of wildlife issues relative to pre-existing highways and future highway planning; differences in impacts and solutions between low volume and high volume roads; structural and nonstructural solutions to wildlife mortality and habitat connectivity; and an introduction to current resources on wildlife/highway crossings and interactions. AgLearn Keywords: highway, transportation, wildlife We will register you in AgLearn. *In collaboration with the USFWS National Conservation Training Center, Shepherdstown, WV.*

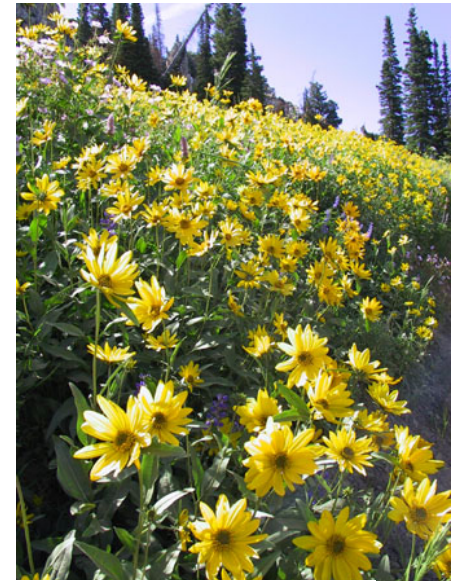
USFWS National Conservation Training Center
May 21 – 23, 2008
Spring 2008

Tuition \$510
Shepherdstown, WV
TBA (western US)

Sandra Jacobson, Pacific Southwest Research Station, Arcata, CA
sjacobson@fs.fed.us 541-678-5240
Terry Brennan, Tonto National Forest, Phoenix, AZ
tbrennan@fs.fed.us 602-225-5375
One semester college credit available.

Terrestrial -

Wildlife Conservation & Management (WCM). Objectives: explain habitat issues and concepts that shape resource management at the national, regional and local levels; apply habitat concepts and management in light of recent theory, technology and research findings; and apply new knowledge to situations and actual problems encountered in resource management. Teaching methods are a ‘blend’ of online and on site: the first part of the course is taught online over a period of 6 weeks, the second part is taught on site for 1 week. AgLearn Keywords: wo 2600 wildlife conservation management



Helianthella uniflora: Photo by Teresa Prendusi/Find-A-Photo

Northern Arizona University
On line: February 18 – April 14, 2008
On site: April 14 - 18, 2008

Flagstaff, AZ
Tuition \$1300

Dr. Carol Chambers, NAU, School of Forestry, PO Box 15018, Flagstaff, AZ, 86011
carol.chambers@nau.edu 928-523-0014

Asking & Answering the Right Monitoring Questions (AARMQ). Objectives: design and implement a monitoring program assessing ecological systems relative to management actions. Topics include: vegetation, plant populations and plant communities, although applications to habitat monitoring and animal populations are also discussed. Day 1 of the workshop demonstrates how conceptual modeling can help craft effective monitoring questions from management goals and ecological context. Days 2 and 3 focus on five effective design and analysis tools for implementation of basic sampling designs. This workshop is meant to help craft effective monitoring programs and is not a workshop in detailed techniques. Depart in the mid-afternoon of Day 3. www.sound-science.org
AgLearn Keywords: wo 2600 monitoring questions

Sound Science, LLC
January 16 – 18, 2008

Salt Lake City, UT
Tuition \$750

Dr. David Maddox, Sound Science-LLC, PO Box 9721, Boise, ID 83707
david@sound-science.org

202-255-1124

Vegetation Monitoring: The Nature Conservancy – Southern Branch hosts a similar workshop. If you are interested please register at their website <http://nata.snre.ufl.edu/registration.htm>. Visit our website for more information.

Aquatic -



Aquatic Ecosystem Monitoring & Evaluation – Western (NR16)

Objectives: demonstrate skills to effectively monitor and evaluate aquatic/riparian restoration projects; and develop an effective aquatic ecosystem monitoring program. This western workshop focuses on the skills needed in a successful aquatic ecosystem monitoring program, including topics on: background information on FS monitoring responsibilities and legal mandates for agency monitoring; priority development, including levels and intensity of monitoring, introduction to sampling design--establish a basic understanding of the statistical principles necessary for designing effective aquatic monitoring strategies; development of monitoring objectives--setting clear monitoring objectives based on management objectives; sampling techniques--to introduce field equipment and techniques commonly used in aquatic resource monitoring; data analysis and evaluation--to display a variety methodologies used for analysis and provide guidance interpretation and reporting of monitoring data. www.fs.fed.us/r6/water/fhr/training. AgLearn Keywords: R6 2600 NR16

USDA Forest Service
Proposed: June 2 – 6, 2008

TBA (western US)
Tuition \$500

Deb Konnoff, USDA Forest Service, Pacific Northwest Region, Natural Resources, Aquatic Training Program, PO Box 3623, Portland OR 97208
dkonnoff@fs.fed.us

503-808-2676

Aquatic Monitoring – Eastern (AM_E)

See “Workshops On Demand” provided by Dr. Brett Roper. Same content as NR16, but with eastern perspective. Tuition dependent on location.

AgLearn Keywords: wo 2600 aquatic monitoring

Stream & Watershed Restoration Design & Implementation (NR20)

Objective: develop and implement stream and watershed restoration programs at the district level.

Description: Reflects restoration in the context of Watershed Analysis, focusing on the skills required for effective stream and watershed restoration programs. Topics include: the watershed context for planning stream habitat and watershed restoration projects; identifying existing habitat conditions, desired future habitat conditions, and limiting factors; formulating watershed, habitat, and channel objectives; developing alternative approaches to restoration in an interdisciplinary manner; general overview on designing and implementing restoration projects; required NEPA analysis and documentation; necessary permits; contract preparation and administration; physical and biological monitoring and evaluation; implementing projects through partnerships; and how to plan successful projects. Opportunity to ask cadre/speakers for feedback/help on watershed restoration projects on which you are currently working. Part of the USFS Pacific Northwest Aquatic Training program.

www.fs.fed.us/r6/water/fhr/training

AgLearn Keywords: R6 2600 NR20

USDA Forest Service

Proposed: May 19 - 23, 2008

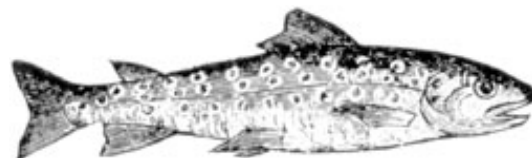
TBA (western US)

Tuition \$500

Su Maiyo, USDA Forest Service, Pacific Northwest Region, Rogue River-Siskiyou NF,
Ashland RD

smaiyo@fs.fed.us

541-552-2913



Advanced Concepts in Aquatic Ecosystem Analysis (ACA EA). Objectives: explain and discuss the aquatic biologist’s role in the watershed-ecosystem analysis process; apply specific analysis methods relating to current issues. **Emphasis changes annually – visit the web site for current information.**

Participants integrate information from conservation biology, community ecology, and the physical sciences into class exercises simulating field problems. Exercises simulate aquatic issue analyses performed during effects analysis. The workshop is approximately 1/2 lecture and 1/2 exercise. Depending on the workshop emphasis, statistical analysis may be included. Target audience is **journey-level fish biologists and aquatic ecologists.**

AgLearn Keywords: wo 2600 advanced concepts aquatic ecosystem

Utah State University

May 12 – 16, 2008

Logan, UT

Tuition \$600

Dr. Brett Roper, USFS National Aquatic Monitoring Program Leader, AWER Department, Utah State University, Logan, UT 84322-5210

broper@fs.fed.us

435-755-3566

Watershed –

Predicting Bedload Transport in Gravel-bed Streams: Computation and Field Techniques

(Bedload). Objectives: (1) Concepts: understand the fundamentals of sediment transport modeling with special emphasis on gravel-bed streams; explain sources of error in making transport estimates; explain the data needed and evaluate the different options available for making transport estimates based on objectives and data availability; (2) Computations: learn to demonstrate the BAGS (Bedload Assessment for Gravel-bed Streams) software that includes six bedload transport equations; understand how to select an appropriate model and how to evaluate the reasonableness of outputs; (3) Field Technique: Learn how to collecting field data needed to run bedload equations; gain an improved understanding of bedload samplers, including bedload traps and Helley-Smith samplers. This course is a combination of lectures, computer labs, and field demonstrations. Target Audience: Resource management professionals, especially hydrologists and engineers.

University of Colorado at Boulder
June 24 – 26, 2008

Boulder, CO
Tuition \$200

Dr. John Pitlick, Associate Professor, Department of Geology, University of Colorado; Dr. Peter Wilcock, Professor, Department of Geology and Environmental Engineering, Johns Hopkins University; Dr. Kristin Bunte, Research Scientist, Department of Civil Engineering, Colorado State University

Information Contact: John Potyondy, USDA Forest Service, Stream Systems Technology Center
jpotyondy@fs.fed.us 970-295-5986

“That is what learning is. You suddenly understand something you've understood all your life, but in a new way.” Doris Lessing, Author

Workshops on Demand

Contact the vendors about hosting a workshop at your home unit. Prices vary by workshop, location and desired complexity. Special requests are welcome. Hosting units assist with facility coordination.

Contact: Dr. Brett Roper

broper@fs.fed.us

435-755-3566

Current options include:

- **Data Analysis using Excel™** – Objectives: design Pivot Tables; use ANOVA and Regression Analysis; interpret data.
- **Technical & Scientific Writing** – Objectives: analyze data; write professional quality technical documents and scientific articles to be disseminated broadly to the public.
- **Sampling Amphibians** – Objective: explain and demonstrate sampling methods for a variety of amphibians and associated habitats.
- **Aquatic Monitoring – Eastern:** Twin to NR16. See NR16 description. Tailored to eastern perspective.

Contact: Dr. Steve McMullin

smcmulli@vt.edu

540-231-8847

Current options include:

- **Effective Public Involvement** - design more effective public involvement into the decision-making process.
- **Creating a High-Performance Natural Resource Agency** - develop and identify strategies for improving performance of their own agencies via exceptionally effective agency examples.
- **Leadership and Communications for Natural Resource Professionals** –
 - Module 1: Foundations of Leadership-Understanding Yourself and Leading Others
 - Module 2: Tools for Decision Making, Public Involvement and Conflict Resolution
 - Module 3: Communications Skills for Natural Resource Professionals

Contact: Mark Hudy

hudymx@jmu.edu

540-568-2704

Current options include:

- **Aquatic Passages** - Road-stream crossing structure inventory and assessment determining barrier status (e.g., FishXing). A number of regional Fisheries, Water & Engineering Program Leaders are cooperatively hosting this workshop. Regions hosting a workshop should allow several months lead-time for working with the team (e.g., decisions/materials - coarse screens).
- **Geo Spatial Photomonitoring** – Enhancing spatial data with digital photography. Applications for aquatic or vegetation monitoring.



Web Site and Online Training

Visit our web site (www.fs.fed.us/biology/education) for detailed workshop information (e.g., agendas, readings, travel). Other information relevant to natural resource professionals is available.

For more information on the Continuing Education - WFW Program contact Shelly Witt, National Continuing Education Program Leader, Watershed, Fish, Wildlife and Air, USDA Forest Service, 860 North 1200 East, Logan, UT 84321; 435-881-4203. Email: switt@cc.usu.edu (read daily) switt01@fs.fed.us (read weekly)

USDA Forest Service-NFS personnel can also contact their Regional Continuing Education Coordinator. Everyone else can contact the National Continuing Education Program Leader.

Regional Continuing Education Coordinators:

Jolyn Wiggins	Region 1	406-329-3629	jwiggins@fs.fed.us
Nancy Warren	Region 2	303-275-5064	nwarren@fs.fed.us
Ernie Taylor	Region 3	505-842-3267	ewtaylor@fs.fed.us
Dana Hoskins	Region 4	801-625-5156	dhoskins@fs.fed.us
MarySue Fisher	Region 5	707-562-8937	mfisher01@fs.fed.us
Robert Alvarado	Region 6	503-808-2901	ralvarado@fs.fed.us
Leigh McDougal	Region 8	404-347-4082	lmdougal@fs.fed.us
Steve Mighton	Region 9	414-297-3612	smighton@fs.fed.us
Barb Schrader	Region 10	907-586-7863	bschrader@fs.fed.us

USDA Discrimination Statement

The U.S. Department of Agriculture (USDA), prohibits discrimination in all its programs and activities on the basis of race, color, national origin, age, disability, and where applicable, sex, marital status, familial status, parental status, religion, sexual orientation, genetic information, political beliefs, reprisal, or because all or a part of an individual's income is derived from any public assistance program. (Not all prohibited bases apply to all programs.) Persons with disabilities who require alternative means for communication of program information (Braille, large print, audiotape, etc.) should contact USDA's TARGET Center at (202) 720-2600 (voice and TDD).

To file a complaint of discrimination write to USDA, Director, Office of Civil Rights, 1400 Independence Avenue, S.W., Washington, D.C. 20250-9410 or call (800) 795-3272 (voice) or (202) 720-6382 (TDD). USDA is an equal opportunity provider and employer.

For other agency and university training opportunities visit www.fs.fed.us/biology/education and select the "Resource Center" link. The BLM, FWS, NOAA, and NPS all offer a number of options. USDA employees can also visit AgLearn. www.aglearn.usda.gov



If you print a "hard" copy, please do it on recycled paper.
Thank you for using 100% recycled electrons.

REGISTERING IN AGLEARN:

USDA Employees can register through AgLearn. To find the CE-WFW workshops, cursor over or click on the 'Catalog' tab then do a 'Simple Search' using keywords 'WO 2600' and uncheck the box 'Exact Phrase'.

You should get a table with all our CE-WFW workshops plus a few other '2600' courses not part of our program. If dates have been set for a workshop there should be a filled in triangle in front of the workshop title. See Screen Image #1 below for an example. 'Click' on the triangle - it will take a moment for the new page to reload. See Screen Image #2 for an example. With the detailed workshop information there is a 'Register' button in the 'Action' column. Click on the 'Register' button to register. At this point you will be on our confirmed participant list for that specific workshop.

If you select 'Add to Learning Plan' the workshop will be added to your personal Learning Plan in AgLearn, but **it won't register you for any training** nor alert any training contacts of your interest.

Request A Training: We have a number of workshops that have not been taught recently due to low participant interest. We are entering them into AgLearn but not scheduling them. If you are interested in attending one of the workshops you can 'Request Schedule' the workshop from your Simple Catalog Search. Don't fill in a date you need the workshop by, as this will result in automatic email reminders from AgLearn. Very annoying. You can also email the National Program Leader. Once we get enough interest in an 'old' workshop (about 20 people), we'll contact you and set up a new offering.

Screen Image #1:

The screenshot shows the USDA AgLearn website interface. At the top, there is a navigation bar with tabs for Personal, Learning, Career, Catalog, and Reports. Below the navigation bar, there is a search bar with the text 'Welcome Shelly Witt | About AgLearn | Contact Us | Home | Search Catalog' and a search input field containing 'wo 2600'. There are also links for 'Go', 'Help', and 'Logo'. Below the search bar, there are several filters: 'Browse Catalog', 'Calendar of Offerings', 'Simple Catalog Search', and 'Advanced Catalog Search'. The search results are displayed in a table with columns for Title, Type, Price (\$), Status, and Action. The table lists several workshops, including '2600 WO Conservation Biology & Restoration Ecology', '2600 WO Endangered Species Act for Line Officers', '2600 WO Leadership and Communications', '2600 WO Natural Resource Policy, Values, and Economics', '2600 WO Plain & Simple! Document Writing', '2600 WO Policy & Legal Aspects of Endangered Species Management', and '2600 WO Program Management'. Each row has a 'Request Schedule' button and an 'Add to Learning Plan' button. The '2600 WO Plain & Simple! Document Writing' row also has an 'Access Community' button.

Title	Type	Price (\$)	Status	Action
2600 WO Conservation Biology & Restoration Ecology	🔒	--	--	Request Schedule Add to Learning Plan
▶ 2600 WO Endangered Species Act for Line Officers	🔒	--	--	Add to Learning Plan
▶ 2600 WO Leadership and Communications	🔒	--	--	Add to Learning Plan
▶ 2600 WO Natural Resource Policy, Values, and Economics	🔒	--	--	Add to Learning Plan
2600 WO Plain & Simple! Document Writing	🔒	--	--	Request Schedule Add to Learning Plan Access Community
▶ 2600 WO Policy & Legal Aspects of Endangered Species Management	🔒	--	--	Add to Learning Plan
▶ 2600 WO Program Management	🔒	--	--	Add to Learning Plan

Screen Image #2

Start Date/Time	Duration	Facility & Location	Price (\$)	Action
11/13/2006 08:00:00 AM PST	8 hours	Lewis & Clark College; Environ/NR Law Program -	0.00	Register

Select this 'Register' button to register for training.

Click on this triangle to expand the workshop information and access the 'Register' button.

Argh! It won't work!

If you cannot access AgLearn you probably need to fix your eAuthentication account. eAuthentication is not part of AgLearn. It is a firewall to a number of USDA online programs. It is important to have your eAuthentication squared away. Be sure your email and supervisor are correctly listed in your AgLearn profile ('Personal' tab – 'Profile' link). Otherwise you will miss out on important email notifications. If you can't access AgLearn please contact the National CE-WFW Program Leader.