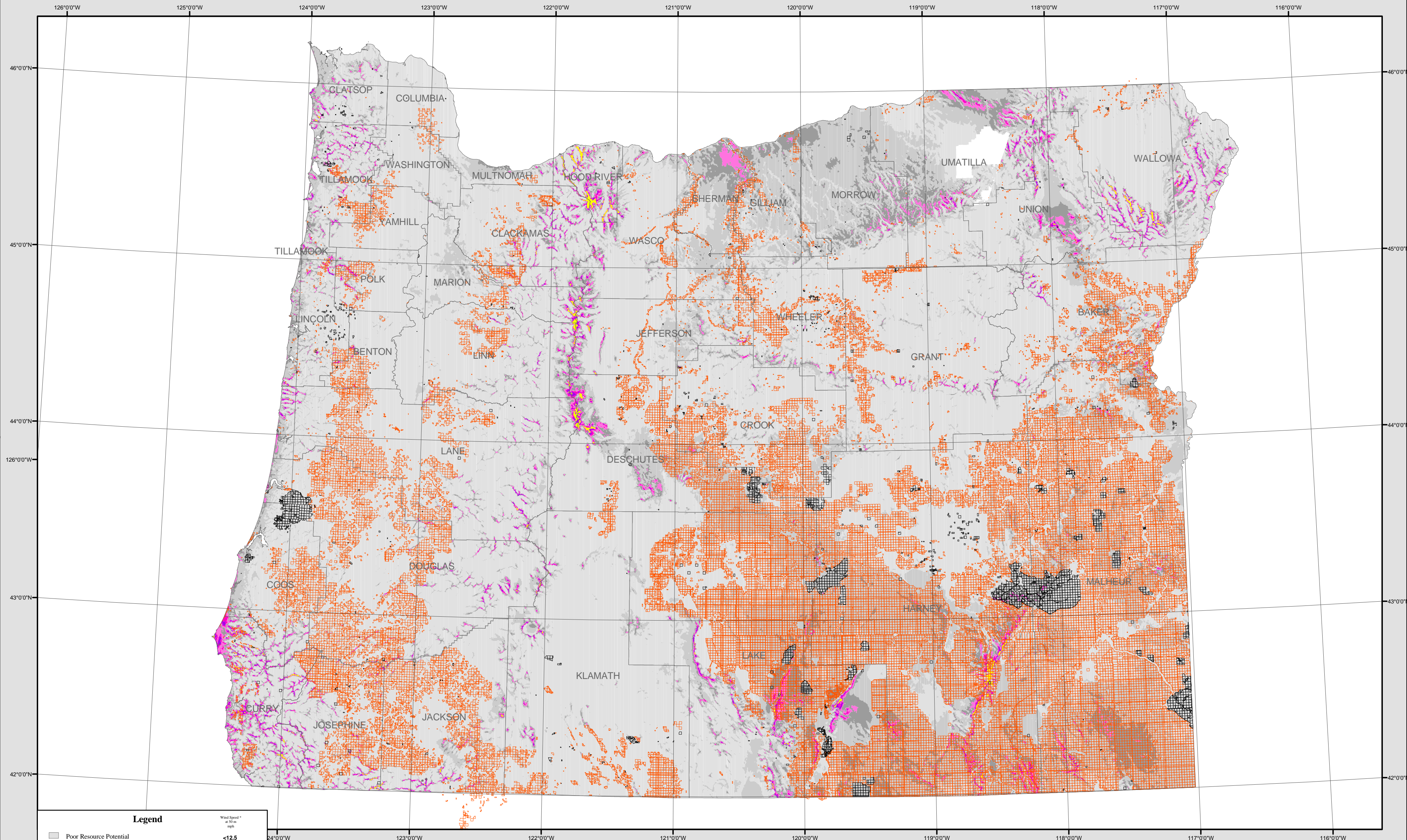


Wind Power Resource Potential in the State of Oregon

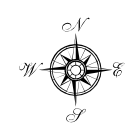
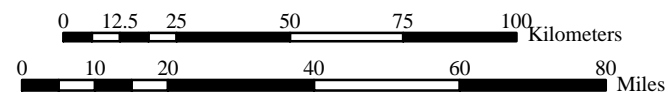


Legend

- | | | | |
|--|-----------------------------------|--|-----------|
| | Poor Resource Potential | | <12.5 |
| | Marginal Resource Potential | | 12.5-14.3 |
| | Fair Resource Potential | | 14.3-15.7 |
| | Good Resource Potential | | 15.7-16.8 |
| | Excellent Resource Potential | | 16.8-17.9 |
| | Outstanding Resource Potential | | 17.9-19.7 |
| | Superb Resource Potential | | >19.7 |
| | Division of State Lands Ownership | | |
| | BLM Public Domain Lands | | |

Wind Speed *
at 50 m
m/s

Scale: 1:1,668,659



September 22, 2003



DSL's Salem Office

All data is provided as is, with all faults, and without any warranty of any kind either expressed or implied, including but not limited to, the implied warranties of merchantability and fitness for a particular purpose.

The raw Asc II data archives used to create this map was provided by the United States Department of Energy's National Renewable Energy Laboratory and by the True Wind Solutions Consultant firm.

State of Oregon
Division of State Lands



Sourheim