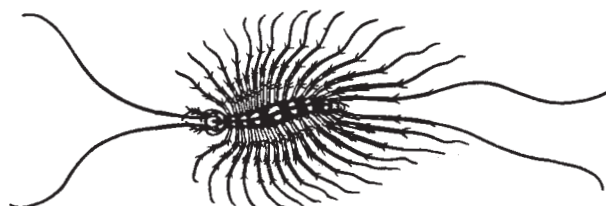


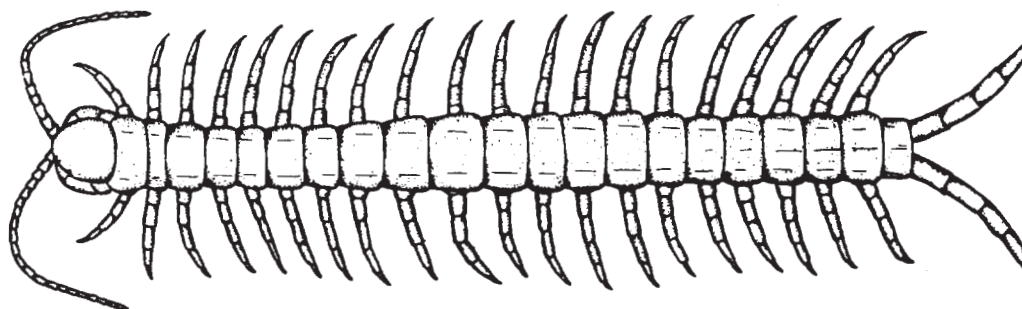
CENTIPEDES: KEY TO SOME IMPORTANT UNITED STATES SPECIES

Harold George Scott

1. 8 dorsal plates: 15 pairs of long legs. . . . EASTERN HOUSE CENTIPEDE, *Scutigera cleoptrata*
 More than 14 dorsal plates. 2

*Scutigera cleoptrata*

2. 15 pairs of legs (*Lithobius*). 3
 21-23 pairs of legs (*Scolopendra*) 4
 More than 30 pairs of legs (*Geophilus*) 5
3. Antenna 19-23 segmented *Lithobius multidentatus*
 Antenna 33-43 segmented *Lithobius forficatus*
4. Anal legs as long as or longer than 3 terminal body segments.
 WESTERN HOUSE CENTIPEDE, *Scolopendra heros*
 Anal legs shorter than 3 terminal body segments *Scolopendra morsitans*

*Scolopendra heros*

5. 47-53 pairs of legs. 6
 64-67 pairs of legs. *Geophilus californicus*
6. With 2 longitudinal black lines *Geophilus rubens*
 Without longitudinal black lines *Geophilus umbraticus*