

Figures

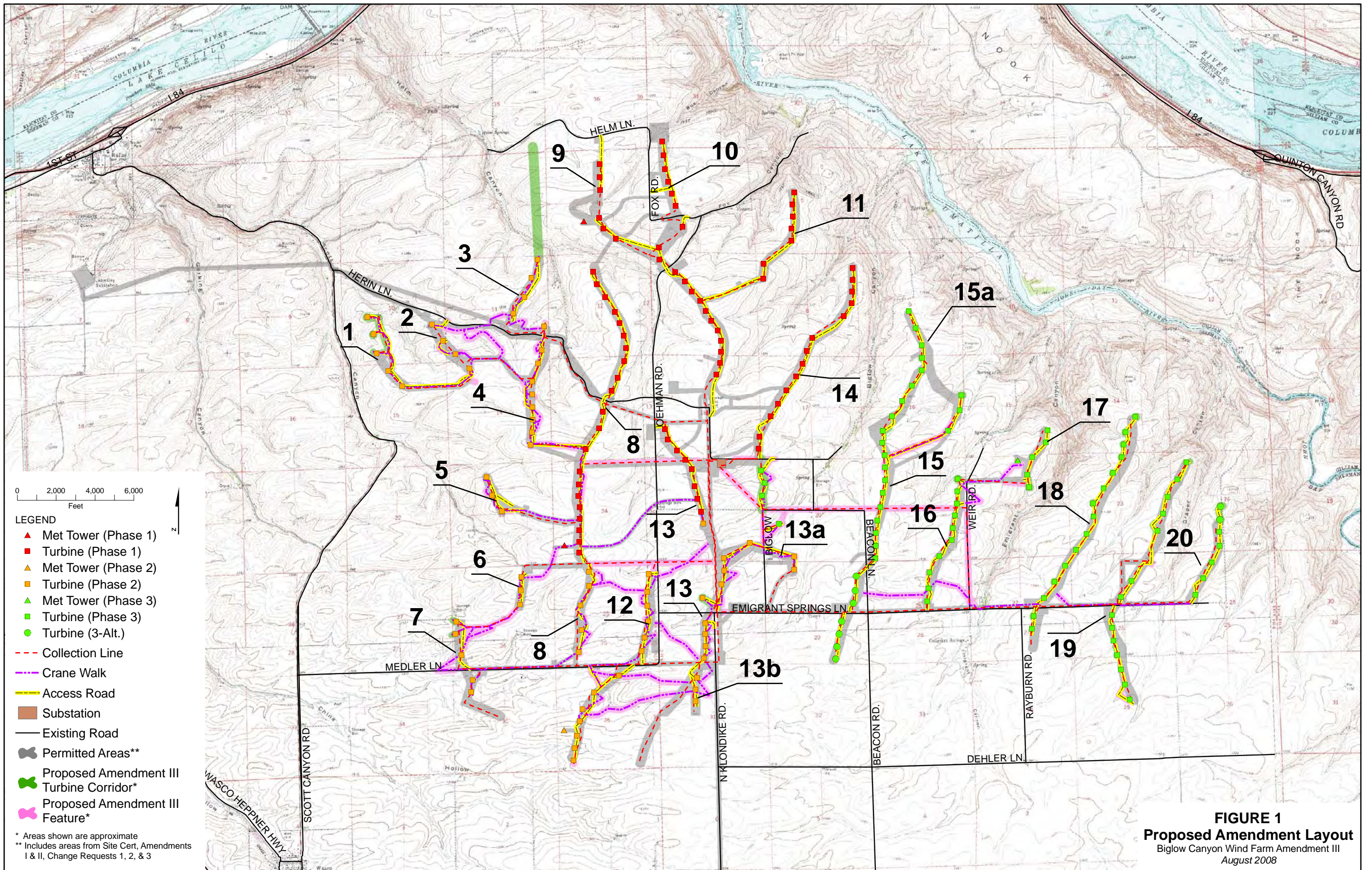
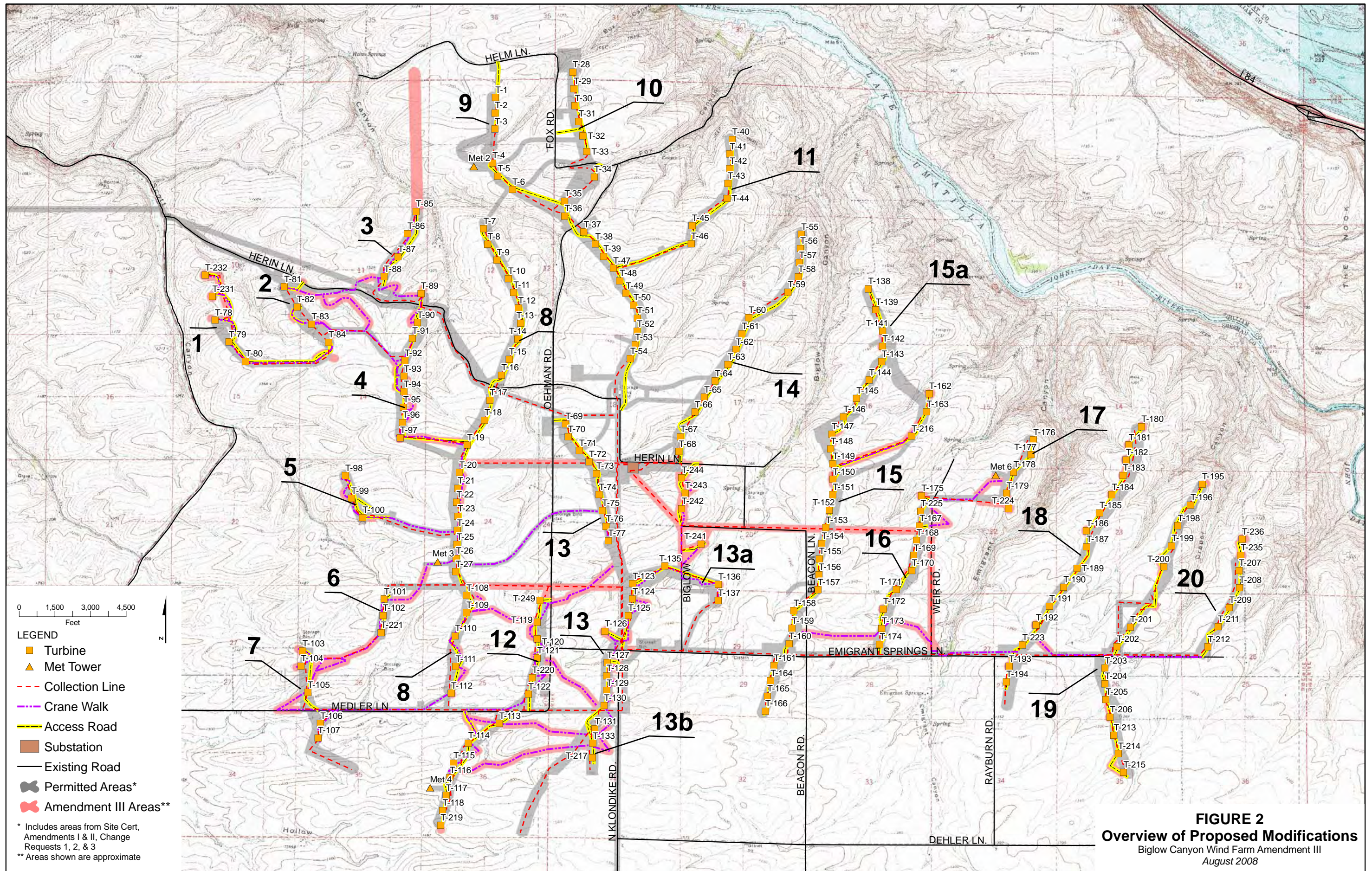


FIGURE 1
Proposed Amendment Layout
 Biglow Canyon Wind Farm Amendment III
 August 2008



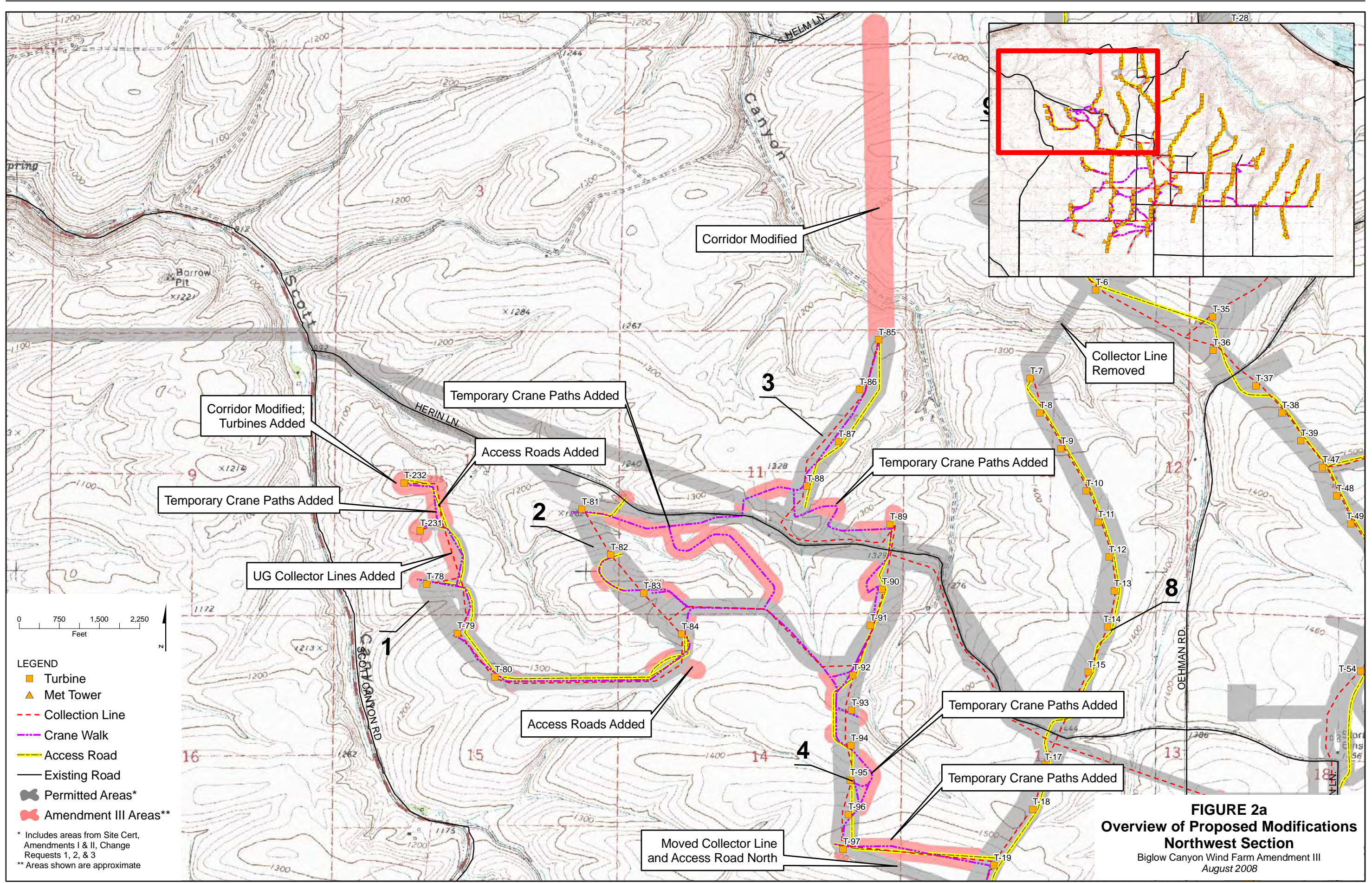


FIGURE 2a
Overview of Proposed Modifications
Northwest Section
 Biglow Canyon Wind Farm Amendment III
 August 2008

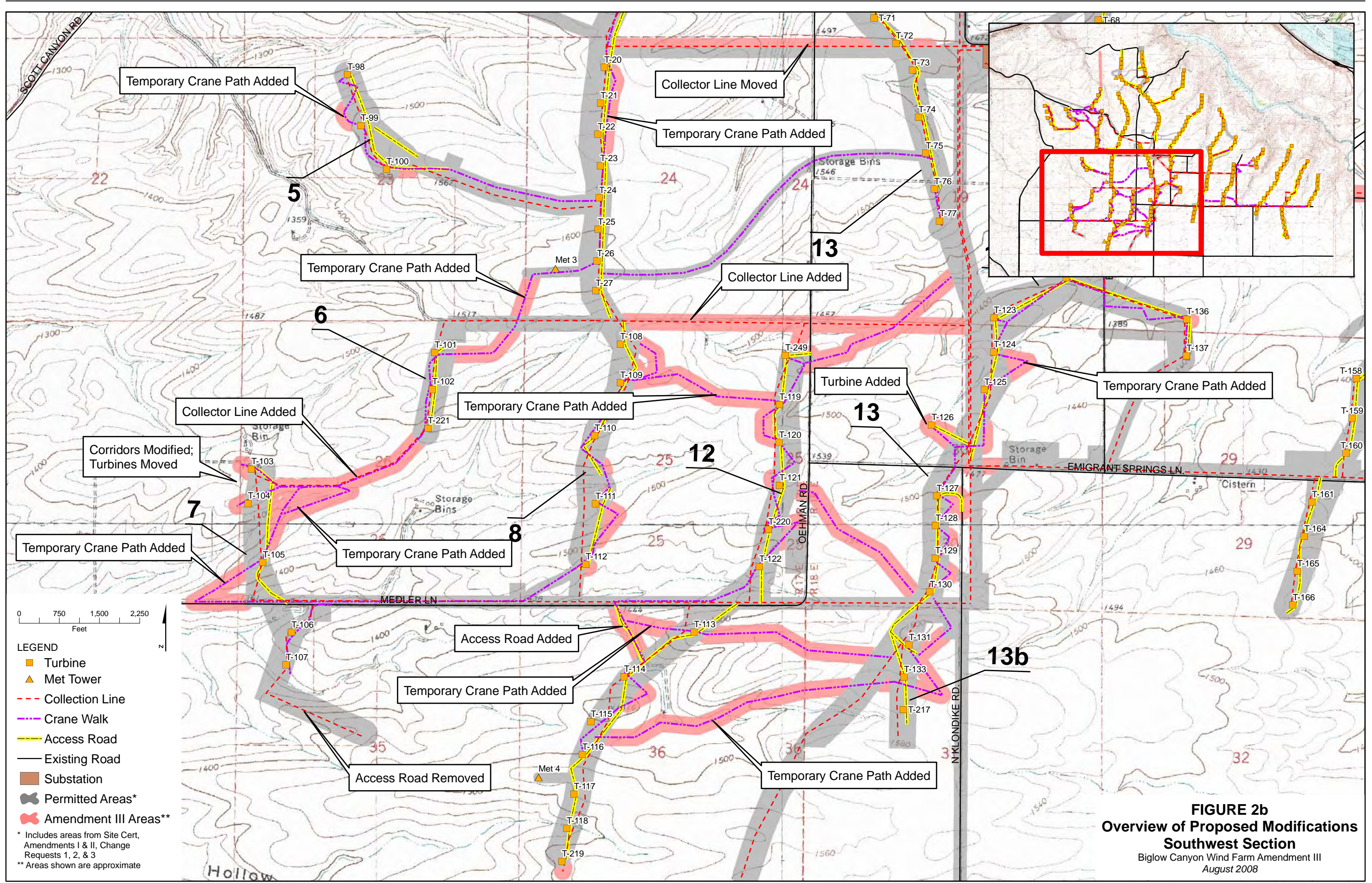


FIGURE 2b
Overview of Proposed Modifications
Southwest Section
 Biglow Canyon Wind Farm Amendment III
 August 2008

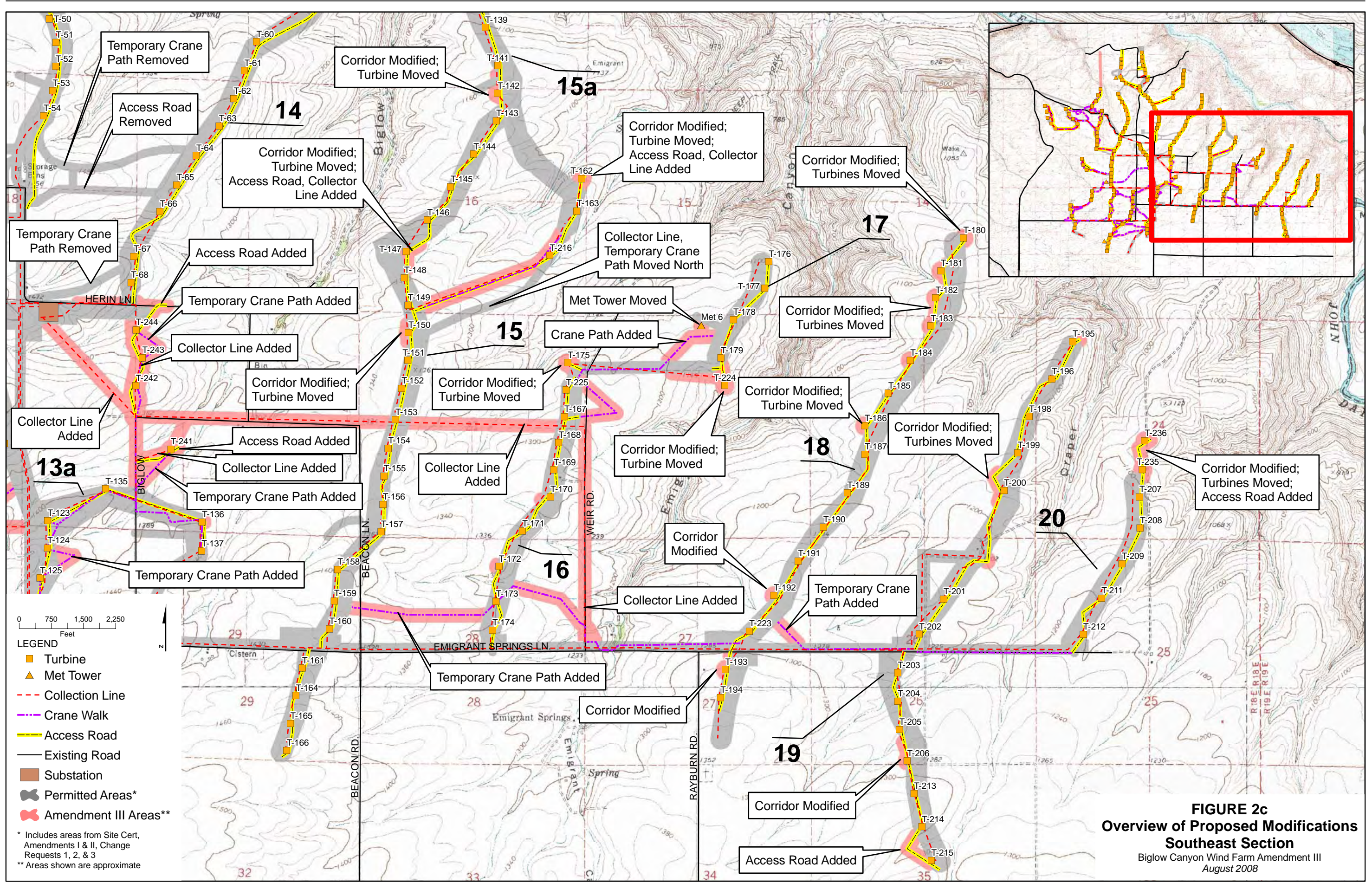


FIGURE 2c
Overview of Proposed Modifications
Southeast Section
 Biglow Canyon Wind Farm Amendment III
 August 2008

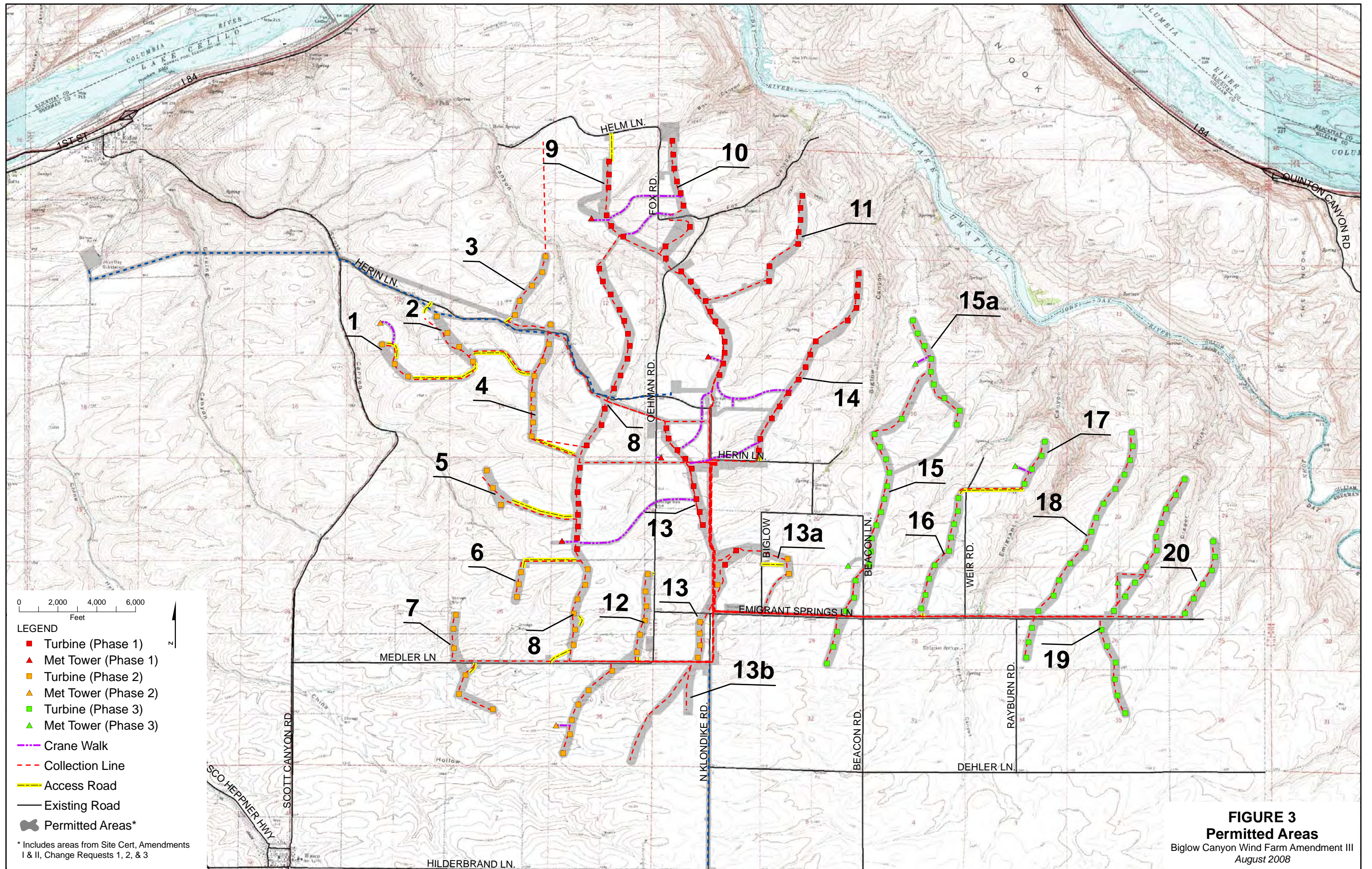


FIGURE 3
Permitted Areas
 Biglow Canyon Wind Farm Amendment III
 August 2008

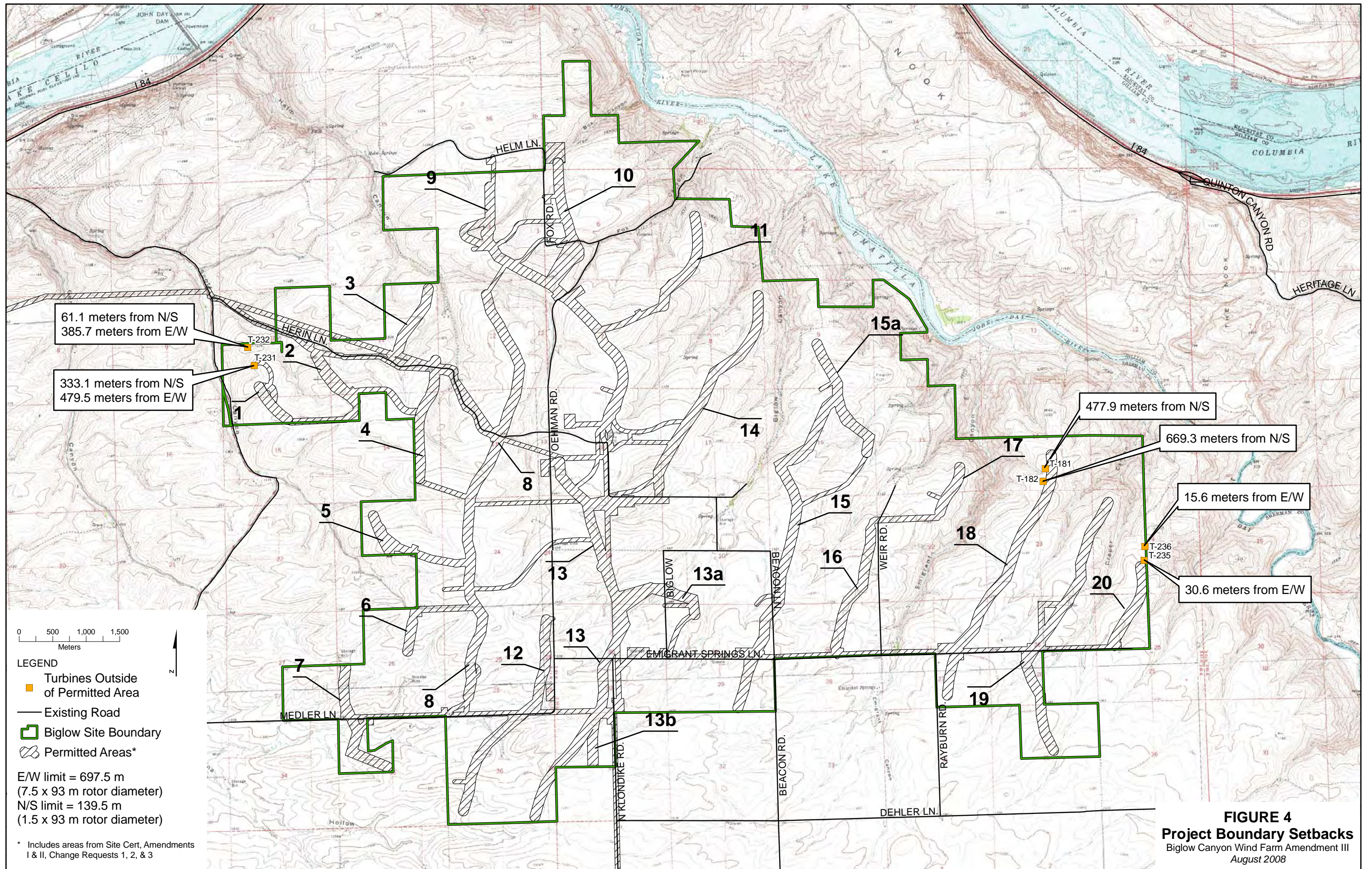


FIGURE 4
Project Boundary Setbacks
 Biglow Canyon Wind Farm Amendment III
 August 2008

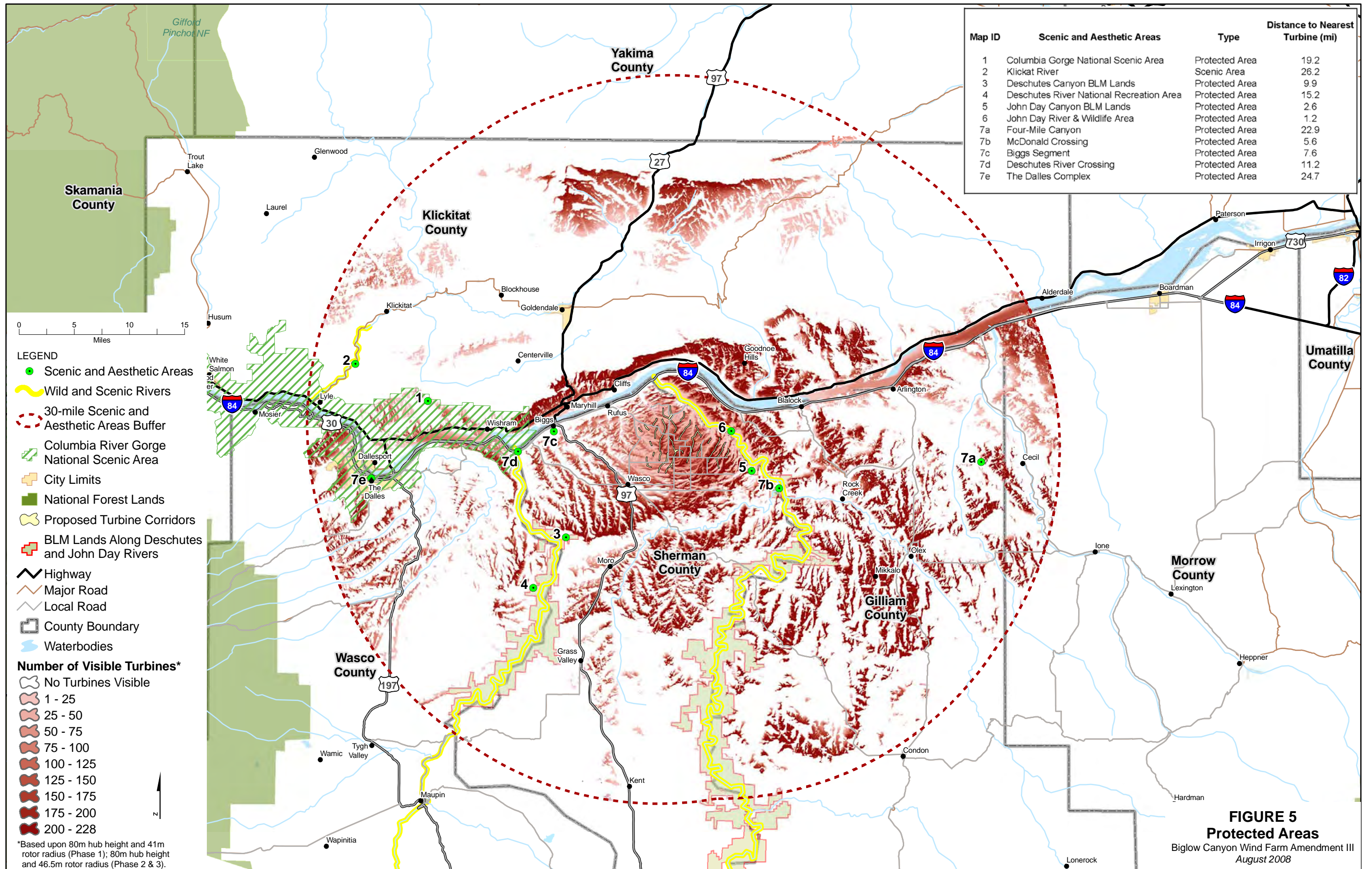


FIGURE 5
Protected Areas
 Biglow Canyon Wind Farm Amendment III
 August 2008

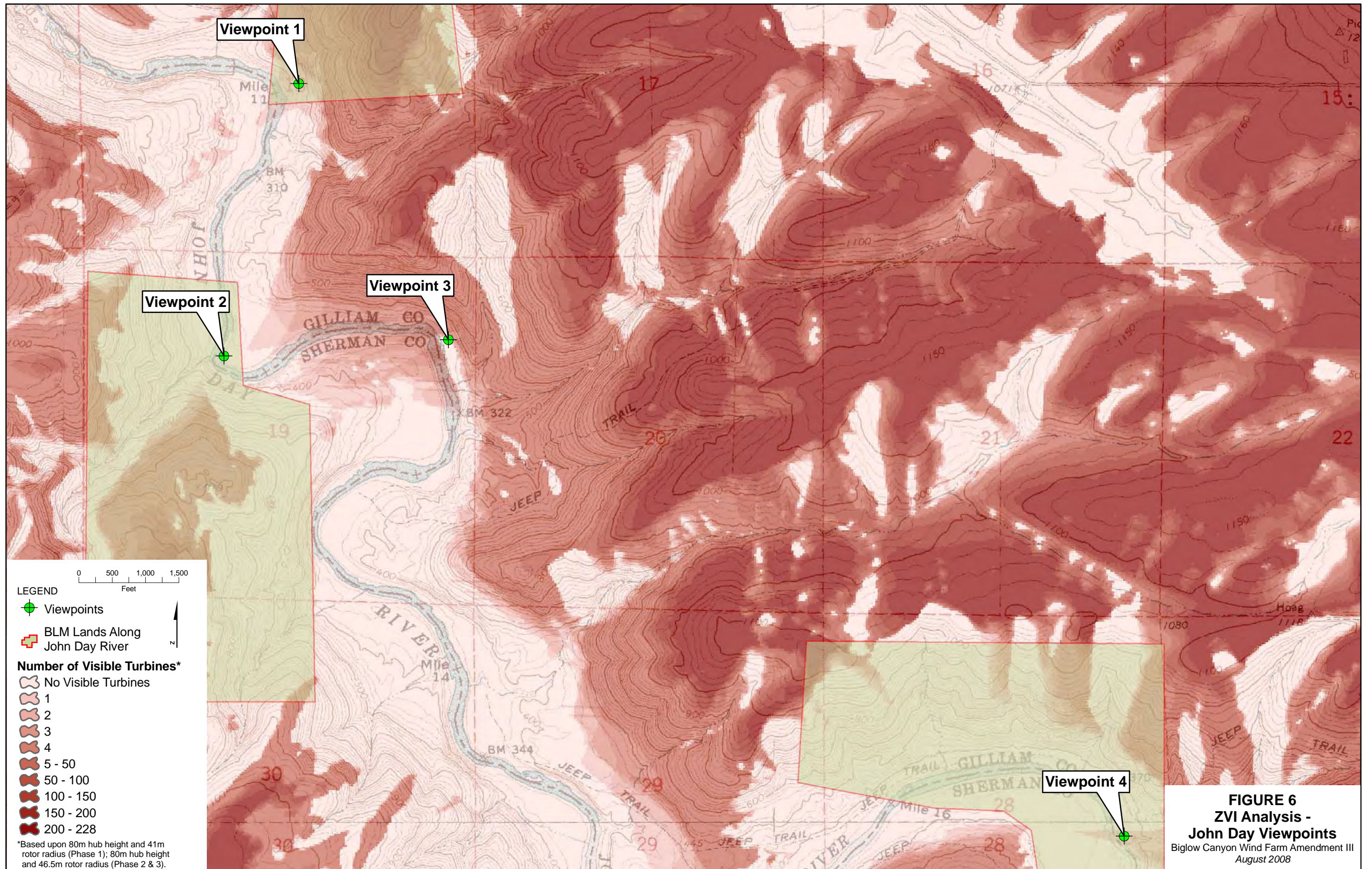
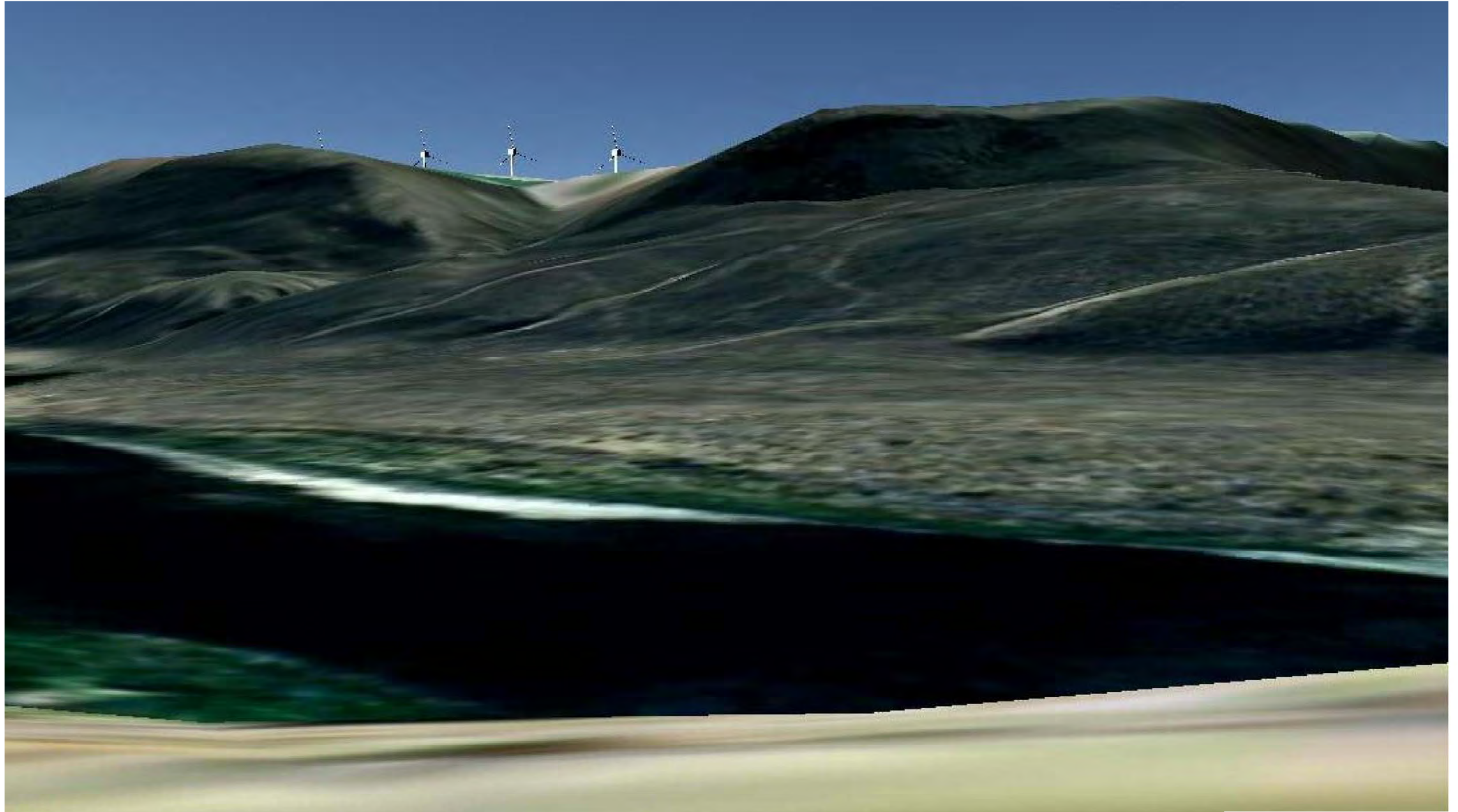
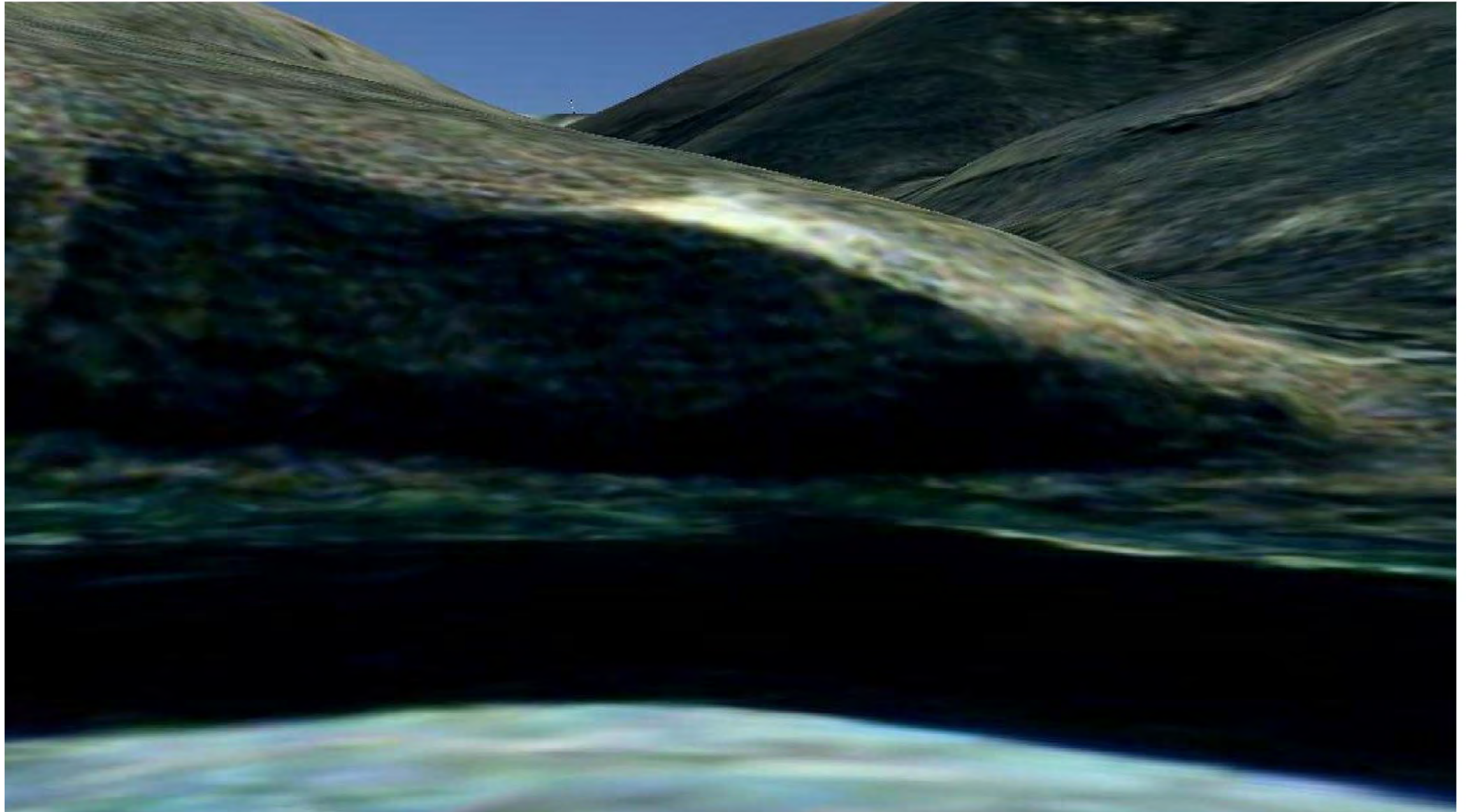


FIGURE 6
ZVI Analysis -
John Day Viewpoints
 Biglow Canyon Wind Farm Amendment III
 August 2008



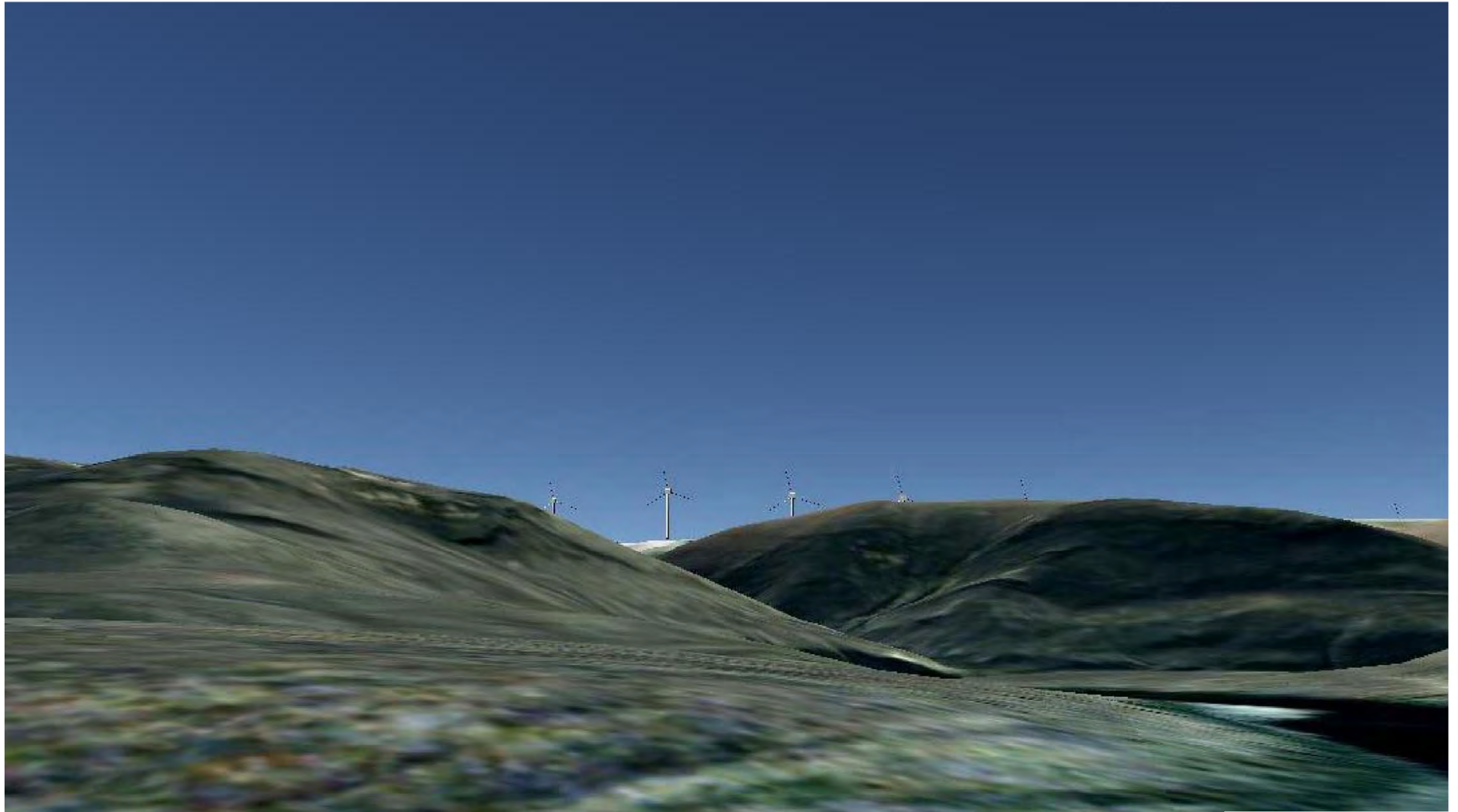
Viewpoint 1
Coordinate: E 695856, N 5058616, (UTM Zone 10N NAD27)
Looking WSW -113°, 11 blade tips are visible, of which 3 hubs are visible
Machine: 93m rotor, 80m hub
Source: Google Earth

FIGURE 6a
Scenic and Aesthetic Areas
Biglow Canyon Wind Farm Amendment III
August 2008



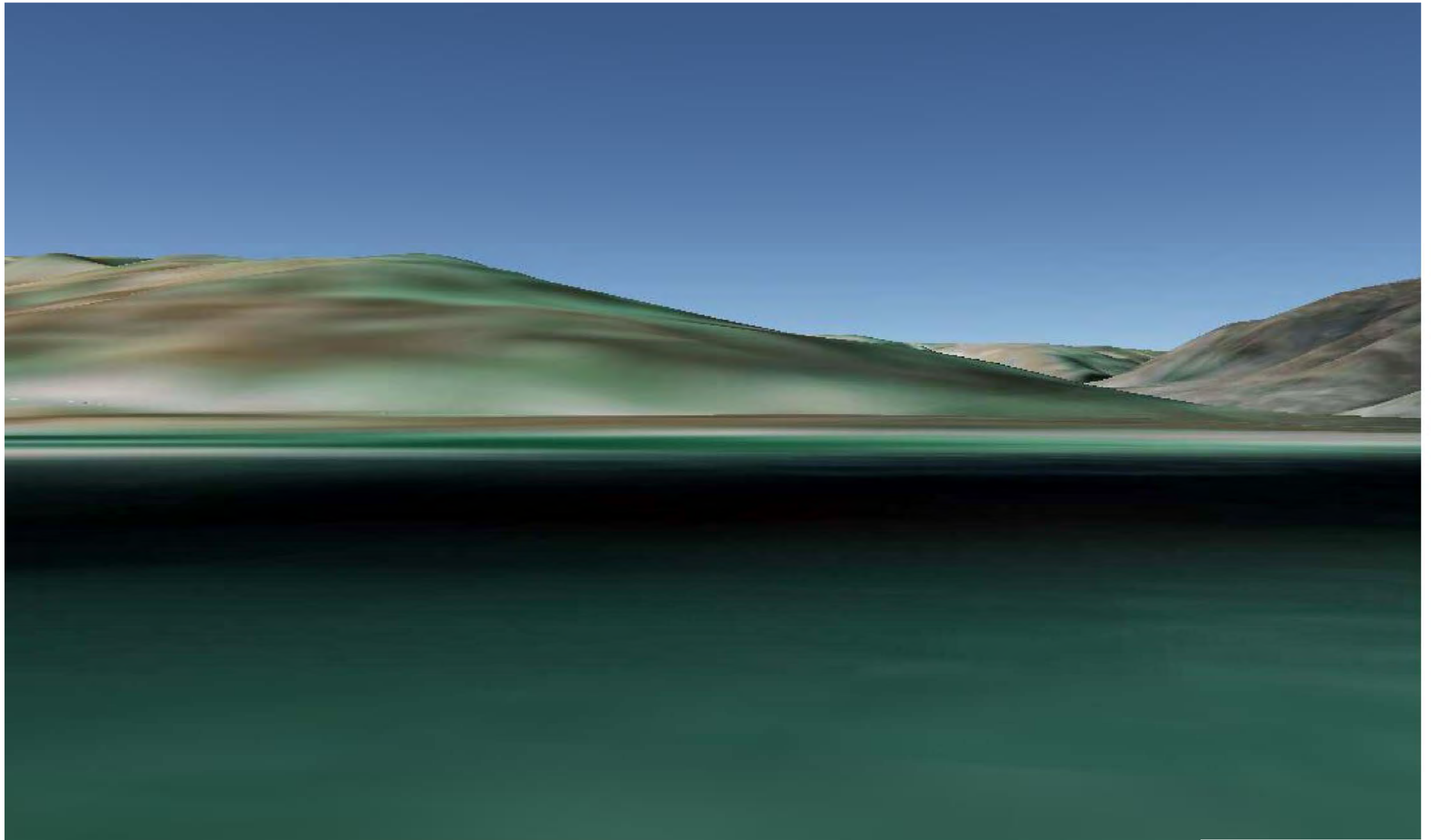
Viewpoint 2
Coordinate: E 695553, N 5057361, (UTM Zone 10N NAD27)
Looking WSW -117°, 1 blade tip is visible, of which 0 hubs are visible
Machine: 93m rotor, 80m hub
Source: Google Earth

FIGURE 6b
Scenic and Aesthetic Areas
Biglow Canyon Wind Farm Amendment III
August 2008



Viewpoint 3
Coordinate: E 696577, N 5057467, (UTM Zone 10N NAD27)
Looking W -101°, 11 blade tips are visible, of which 3 hubs are visible
Machine: 93m rotor, 80m hub
Source: Google Earth

FIGURE 6c
Scenic and Aesthetic Areas
Biglow Canyon Wind Farm Amendment III
August 2008



Viewpoint 4
Coordinate: E 699738, N 5055295, (UTM Zone 10N NAD27)
Looking W -101°, 0 blade tips are visible
Machine: 93m rotor, 80m hub
Source: Google Earth

FIGURE 6d
Scenic and Aesthetic Areas
Biglow Canyon Wind Farm Amendment III
August 2008