

UNREGULATED CONTAMINANT MONITORING REGULATION (the Second Cycle) UCMR 2



DISCLAIMER: This Webcast describes the provisions of the UCMR 2 program and the EPA regulations which establish legally binding requirements. However, this Webcast does not substitute for those provisions or regulations.

This Presentation Covers:

- UCMR 2 Overview
- Roles and Responsibilities
- Monitoring Requirements
- Contracting with Labs
(Requirements and Recommendations)
- SDWARS / Reporting Requirements
(Immediate and after monitoring starts)

Participant Feedback – Q1

Please indicate your stakeholder group:

- a) PWS*
- b) Laboratory*
- c) State*
- d) USEPA*
- e) Consultant*
- f) Other*



UCMR 2 *Overview*

This Section Explains:

- **UCMR Program**
- **UCMR 2**
 - % **Major Provisions**
 - % **Contaminants**
 - % **PWS Applicability**
 - % **Monitoring Timeline**

What is the UCMR Program?

- **First established under the 1986 SDWA**
- **Updated per 1996 SDWA amendments**
 - % Monitoring occurs in 5-year cycle
 - % No more than 30 contaminants per cycle
 - % Representative sample of small systems
- **UCMR 1 from 2001-2005 (*64 FR 50556*)**
- **UCMR 2 from 2007-2011 (*72 FR 368*)**
 - % *Published January 4, 2007 in the Federal Register*

UCMR Purpose

- Determine occurrence of unregulated contaminants in finished DW
- Use data in regulatory decision-making



UCMR Program Basics

Tiered Monitoring

- **3 Tiers of Potential Monitoring**
 - % **Assessment Monitoring (AM) - List 1**
 - % **Screening Survey (SS) - List 2**
 - % **Pre-screen Testing (PST) - List 3**
(no List 3 monitoring currently specified for UCMR 2)

UCMR 2 Major Provisions

- **Two Tiers Currently Mandated**
 - % **Assessment Monitoring (AM) - List 1**
 - 10 contaminants using 2 analytical methods
 - % **Screening Survey (SS) - List 2**
 - 15 contaminants using 3 analytical methods
- **CWSs and NTNCWSs are subject to monitoring**
- **Monitoring is not required at:**
 - % **PWSs purchasing 100% of their finished water**
 - % **TNCWSs**
- **Reporting directly to SDWARS**

List 1 Contaminants: *Assessment Monitoring*

Five Flame Retardants by EPA Method 527

- 2,2',4,4'-tetrabromodiphenyl ether (BDE-47)
- 2,2',4,4',5-pentabromodiphenyl ether (BDE-99)
- 2,2',4,4',5,5'-hexabromobiphenyl (HBB)
- 2,2',4,4',5,5'-hexabromodiphenyl ether (BDE-153)
- 2,2',4,4',6-pentabromodiphenyl ether (BDE-100)

Two Other Priority Compounds by EPA Method 527

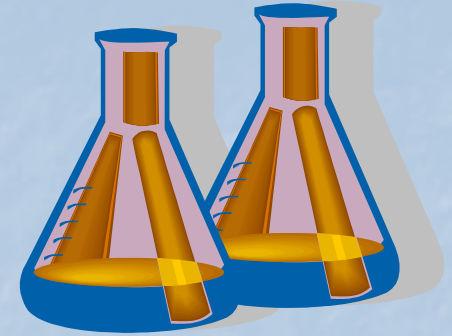
- Terbufos sulfone
- Dimethoate

Three Explosives by EPA Method 529

- Hexahydro-1,3,5-trinitro-1,3,5-triazine (RDX)
- 1,3-dinitrobenzene
- 2,4,6-trinitrotoluene (TNT)



List 2 Contaminants: *Screening Survey*



Three Acetanilide Parent Herbicides by EPA Method 525.2

- Acetochlor
- Alachlor
- Metolachlor



Six Acetanilide Degradates by EPA Method 535

- Acetochlor ESA¹
- Alachlor OA
- Acetochlor OA²
- Metolachlor ESA
- Alachlor ESA
- Metolachlor OA

¹ ethane sulfonic acid (ESA)

² oxanilic acid (OA)

Six Nitrosamines by EPA Method 521

- N-nitrosodiethylamine (NDEA)
- N-nitrosodi-n-propylamine (NDPA)
- N-nitrosodimethylamine (NDMA)
- N-nitrosomethylethylamine (NMEA)
- N-nitrosodi-n-butylamine (NDBA)
- N-nitrosopyrrolidine (NPYR)

UCMR 2 Major Provisions

PWS Applicability and Location

	Assessment Monitoring (List 1)	Screening Survey (List 2)
Systems:	<ul style="list-style-type: none"> ■ All systems serving more than 10,000 (~3400) ■ Representative sample of 800 small systems serving 10,000 or less 	<ul style="list-style-type: none"> ■ All of the largest systems serving more than 100,000 (~400) ■ Representative sample of 800 systems serving 100,000 or less
<i>No small system (serving 10,000 or less) selected for both List 1 and List 2.</i>		
Sampling Locations:	<ul style="list-style-type: none"> ■ EPTDSs only 	<ul style="list-style-type: none"> ■ EPTDSs ■ DSMRTs for List 2 nitrosamines

UCMR 2: Monitoring Timeline

2008	2009	2010
Monitoring Activities		
<p>← Assessment Monitoring →</p> <p>List 1 Contaminants</p> <p>All systems serving more than 10,000; 800 systems serving 10,000 or fewer</p>		
<p>~1/3 systems (~1,400)</p>	<p>~1/3 systems (~1,400)</p>	<p>~1/3 systems (~1,400)</p>
<p>← Screening Survey →</p> <p>List 2 Contaminants</p> <p>All systems serving more than 100,000; 800 systems serving 100,000 or fewer</p>		
<p>~1/3 systems (~400)</p>	<p>~1/3 systems (~400)</p>	<p>~1/3 systems (~400)</p>

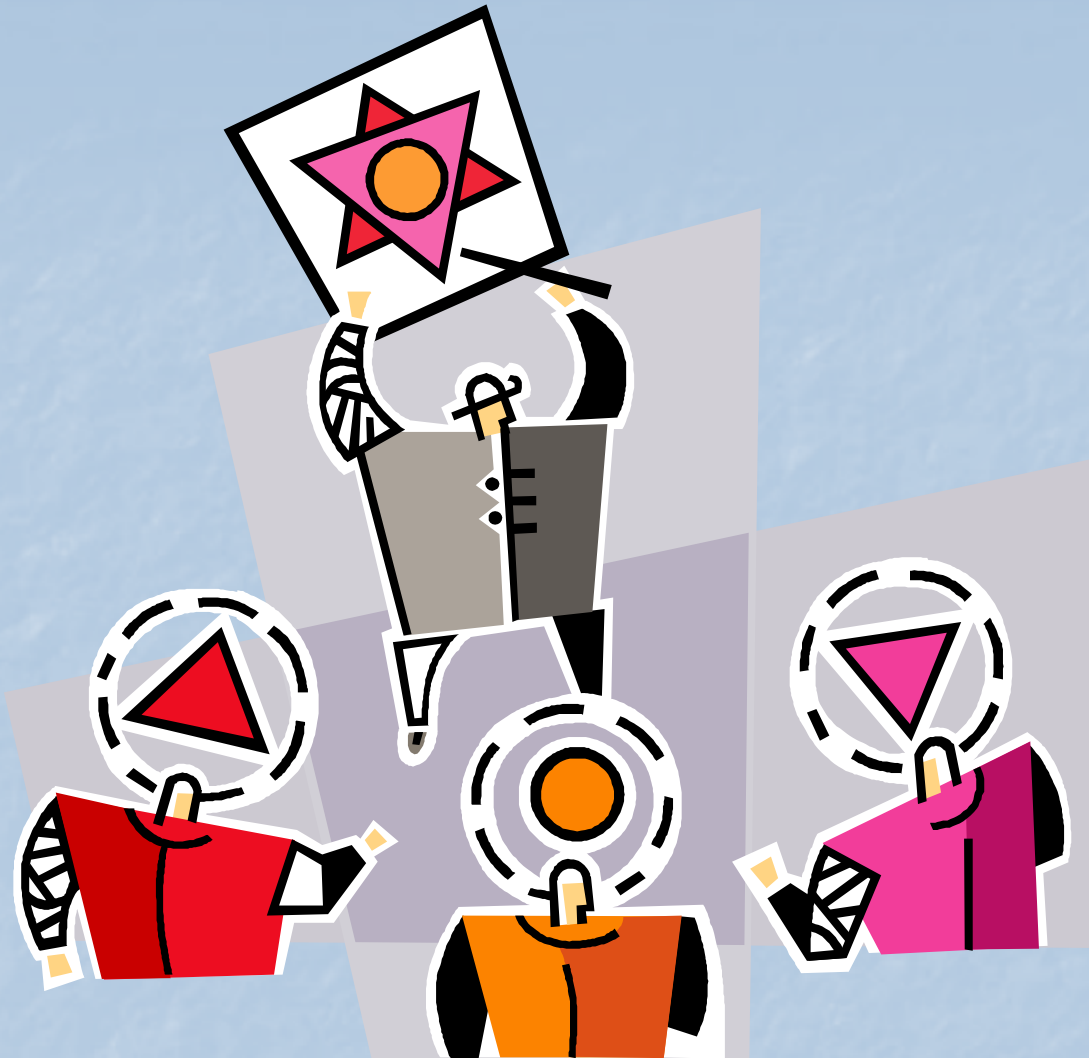
Participant Feedback – Q2

Which PWSs need to conduct both List 1 and List 2 monitoring?

- a) PWSs serving more than 10,000*
- b) PWSs serving more than 100,000*
- c) Selected PWSs serving more than 10,000*
- d) Selected PWSs serving 10,000 or less*
- e) (b) and (c)* ← **The correct answer**
- f) (a) and (d)*
- g) PWS that request List 1 and List 2*

Q2 - Discussion

- (a)...incorrect...PWSs defined by (a) must conduct List 1, but only some of these systems need to conduct both List 1 and List 2.
- (b)...partially correct...The PWSs defined by (b) must conduct both List 1 and List 2, but this does not include those systems that are defined by (c).
- (c)...partially correct... The PWSs defined by (c), which serve more than 10,000 and must conduct List 1, have additionally been selected to monitor under List 2. However, this answer does not include those PWSs covered under (b).
- (d)...incorrect....PWSs subject to UCMR 2 and that serve 10,000 or less are selected for either List 1 or List 2, not both.
- (e)...CORRECT...PWSs defined by (b) and (c) must conduct both List 1 and List 2.
- (f)...incorrect... neither (a) nor (d) are correct answers.
- (g)...incorrect....if EPA relied on volunteers to request participation in List 1 and List 2, we wouldn't have a nationally representative group of PWSs.



UCMR 2

Roles and Responsibilities

This Section Explains:

UCMR 2 Roles and Responsibilities of:

- USEPA
- Partnered States
- PWSs
- EPA-approved laboratories

USEPA

Roles and Responsibilities

- **OGWDW Technical Support Center (TSC)**
 - % **Direct implementation responsibilities**
 - **Full responsibility in non-partnered states**
 - % **Manage lab approval program**
 - % **Coordinate small system monitoring**
 - % **Implementation central point of contact**
- **OGWDW Infrastructure Branch**
 - % **SDWARS development and maintenance**
- **Regional Offices**
 - % **Negotiate State partnership agreements (PAs)**
 - % **Implementation assistance and enforcement**

USEPA Contacts

- **OGWDW Technical Support Center (TSC)**

Mail: UCMR Sampling Coordinator

USEPA, Technical Support Center

26 W Martin Luther King Dr. (MS140)

Cincinnati, OH 45268

Fax: 513-569-7191

E-mail: *UCMR_Sampling_Coordinator@epa.gov*

UCMR Message Center: 800-949-1581

OGWDW Infrastructure Branch

% CDX Help Desk: 888-690-1995

States

Roles and Responsibilities

- **Determined by Partnership Agreement (PA)**
 - % **PA invitation sent to all states/territories/tribes**
 - % **Most have partnered with EPA**
 - % **PA assistance varies:**
 - All reviewed State Monitoring Plan (SMP)
 - Most provided PWS sample location inventory
 - Many to notify PWSs of monitoring requirements
 - Many to collect samples, coordinate analysis, and provide compliance assistance

PWSs

Roles and Responsibilities

- **Immediate reporting responsibility (SDWARS)**
 - % **Register/establish CDX account for SDWARS**
 - % **Enter PWS contact information by April 4, 2007**
 - % **Review sample location inventory, monitoring schedule by August 2, 2007**
- **Prior to monitoring**
 - % **Establish contract with EPA-approved UCMR 2 lab**
- **During scheduled monitoring**
 - % **Ensure proper sample collection/shipment**
 - % **Review/approve/submit lab posted data in SDWARS**

Laboratories

Roles and Responsibilities

- UCMR 2 approval, by method from USEPA
 - % **Granted via UCMR 2 Laboratory Approval Program**
 - **Registration Deadline: April 4, 2007**
 - **Key steps include:**
interest letter, registration, method specific applications, qualify for PT Study
 - **More info:**
www.epa.gov/safewater/ucmr/ucmr2/labs.html
- Labs conducting analyses post data to SDWARS
- EPA approval is contingent upon labs:
 - % **Posting data to SDWARS**
 - % **Adhering to quality control**
- EPA-approved labs subject to audit

Laboratories

Proficiency Testing (PT) Schedule

- **PT Study #3 - March 13, 2007**
 - % **Application deadline: February 12, 2007**
- **PT Study #4 - June 19, 2007**
 - % **Application deadline: May 21, 2007**
- **PT Study #5 - September 25, 2007**
 - % **Final PT study of Laboratory Approval Program**
 - % **Application deadline: August 27, 2007**

**Laboratory Approval Program Registration
Deadline: April 4, 2007**

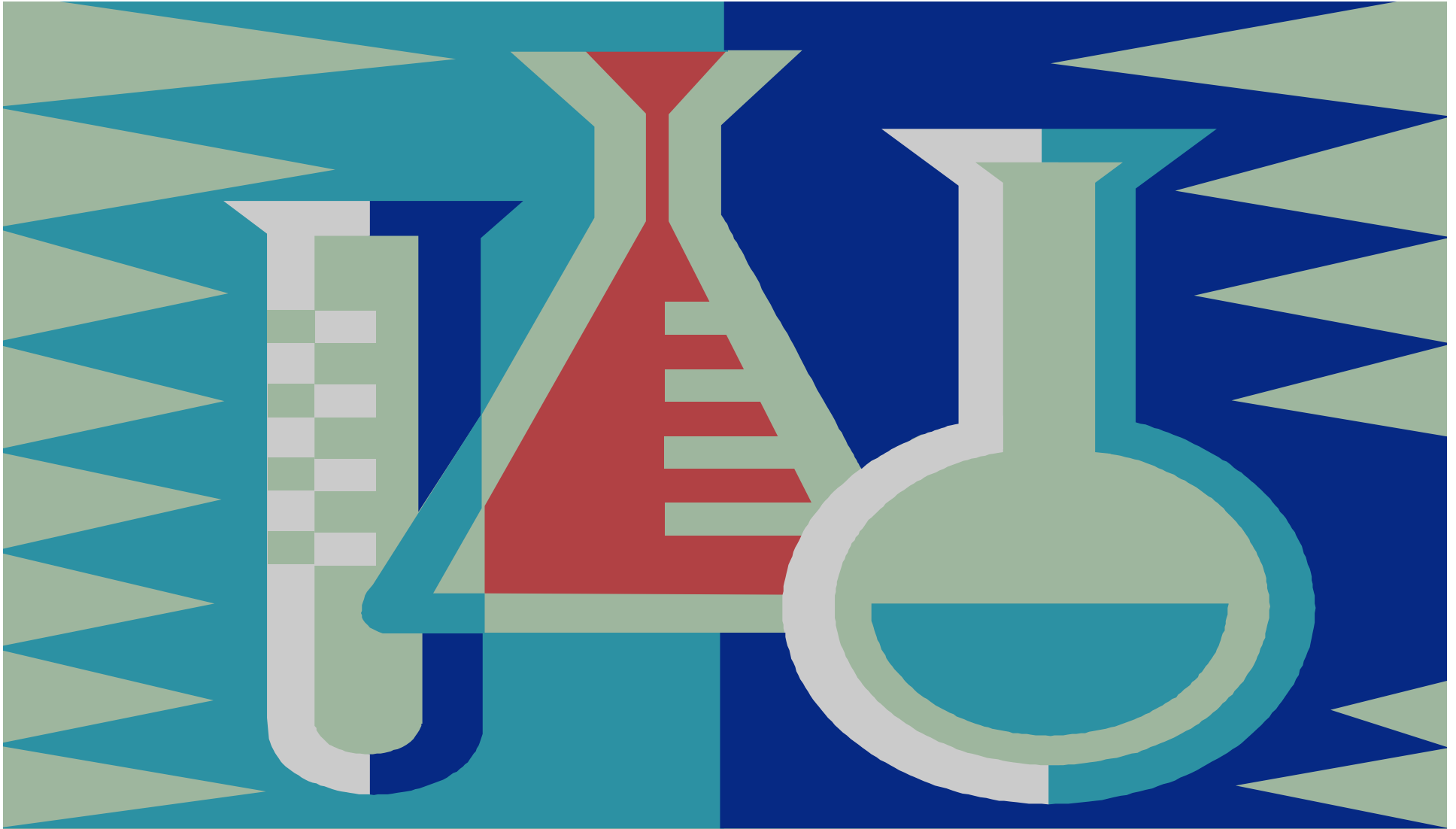
Participant Feedback – Q3

A lab (with or without EPA approval) serves as the prime contract laboratory and subcontracts to an EPA-approved laboratory. Who posts the data to SDWARS?

- a) Subcontract Lab* ← **The correct answer**
- b) Prime Lab*
- c) PWS*
- d) State*
- e) (a) and (b)*
- f) No one, subcontracting is not allowed*

Q3 - Discussion

- (a)...CORRECT...labs that analyzes the samples will post the results to SDWARS.
- (b)...incorrect...the prime lab only serves an administrative role between the client PWS and subcontract lab. They cannot post the results to SDWARS, even if they are approved for the specific method. If they did not analyze the sample, they cannot post the results.
- (c)...incorrect... the lab that analyzes the sample must post the data to SDWARS, not the PWS. The PWS reviews the results posted by the laboratory.
- (d)...incorrect...the lab that analyzes the sample must post the data to SDWARS. The State reviews PWS-approved results. If, however, the State has an EPA-approved lab that conducted the analysis, those results are posted. But if the State lab subcontracts, the subcontract lab must post the data.
- (e)...incorrect...as (b)... In cases where the prime lab has approval in some methods but not others. The prime lab can ONLY post to SDWARS those results for samples they have analyzed, using methods in which they are EPA-approved. Any EPA-approved subcontract lab that conducts analysis for a prime lab must post those data.
- (f)...incorrect...subcontracting to EPA-approved labs is permitted. Prime labs must ensure subcontract labs have all the required sample location inventory, primarily PWSID, Facility ID and Sample Point ID, needed to post the results. The subcontract lab does not need to know contact information for the prime lab's client PWS(s).



UCMR 2

Monitoring Requirements

This Section Explains:

- **Timing of monitoring**
- **Sampling locations**
 - % Entry point to the distribution system (EPTDS)
 - % Distribution system maximum residence time (DSMRT)
- **Sample collection procedure**

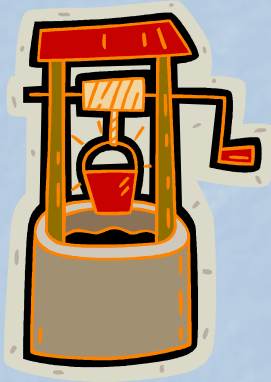
Timing of Monitoring *System Schedules*

- Monitoring January 2008 - December 2010
% Large PWS scheduled for a 12-month period in SDWARS
- Large PWS can revise schedule in SDWARS until August 2, 2007
- Late schedule change requests must be justified and submitted to TSC



Timing of Monitoring

Source Type



- **Groundwater**

- % Monitor twice

- % Sample 5 to 7 months apart

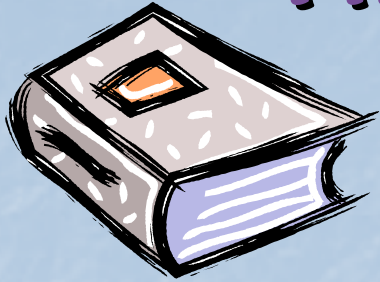
- **Surface water or GUDI**

- % Monitor quarterly

- % Sample 3 months apart



Timing of Monitoring



Water Source Definitions

Surface Water ~ some or all water comes from surface water source any time during 12-month monitoring period

GUDI ~ some or all water comes from GUDI source any time during 12-month monitoring period

~ Exception: Defined as surface water if any used ~

Groundwater ~ all water comes from groundwater source during entire 12-month monitoring period

Sampling Locations

EPTDS



- Sample at EPTDS for all UCMR 2 contaminants (List 1 and List 2)
- No source water monitoring (except untreated before the EPTDS location)
- GW representative EPTDS may apply

Sampling Locations

DSMRT

(only applies to List 2 monitoring)

- Exclusive to nitrosamine sampling at Stage 1 DSMRT
- Applies to DSMRT locations associated with EPTDSs
- Monitoring not impacted by:
 - % Reduced Stage 1 DBPR monitoring
 - % IDSE (Stage 2) site specifications

Sampling Locations

Summary

If a PWS conducts:	Sample at:	For:
Assessment Monitoring	EPTDSs	All List 1 contaminants
Screening Survey & subject to Stage 1 DBPR	EPTDSs	All List 2 contaminants
	DSMRT(s)	Nitrosamines only
Screening Survey & <i>not</i> subject to Stage 1 DBPR	EPTDSs	All List 2 contaminants

Sample Collection Procedures

Important Issues



■ Time of Collection

% Collect samples early to meet overnight delivery

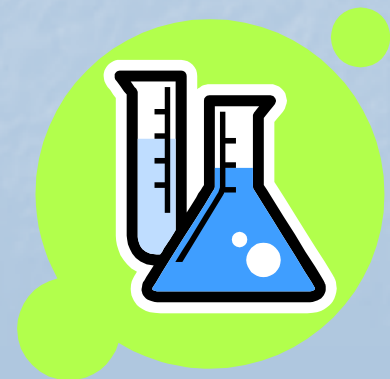
% Should sample on Monday - Thursday

% Sample acetanilide parents⁽¹⁾ (Method 525.2) and their OA and ESA degradates (Method 535) at same place and time

■ Collect from spigot, faucet, or tap

■ No compositing

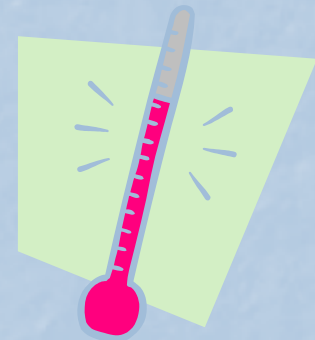
(1) Acetochlor, Alachlor, Metolachlor



Sample Collection Procedures

Temperature Considerations

- Sample must not exceed temperature criteria during 1st 48 hrs:
 - % **Must arrive at lab < 10EC (< 50EF)**
- Warm weather sampling precaution:
 - % **Initially cool samples at PWS, prior to shipment**
- Ship samples on ice or using chemical ice packs
- **Do not** freeze



Sample Collection Procedures

Minimum Sample Volumes

Requirement	EPA Method	Minimum Sample Volume Collected
Assessment Monitoring (List 1)	527.0	1 liter
	529.0	1 liter
Screening Survey (List 2)	521.0	0.5 liter
	525.2	1 liter
	535.0	250 milliliters

- ❖ *Larger volumes or duplicate samples may eliminate need for recollection*
- ❖ *Labs will periodically request additional samples for QC*

Sample Collection Procedures

Important information for the Lab

Key information:

- PWSID and PWS Name
- Sample location identification
 - PWS Facility ID
 - PWS Facility Name
 - Sampling Point ID
 - Sampling Point Name
 - Sampling Point Type

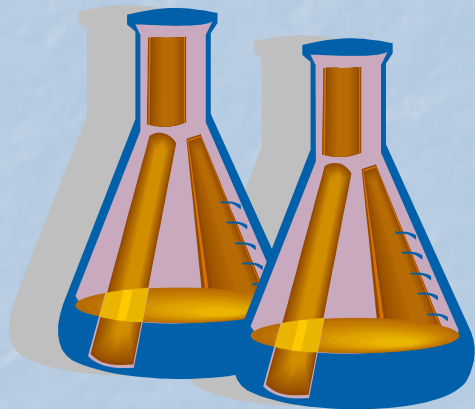
Where can you find these? SDWARS inventory!

- Sampling date, time, sampler's signature
- Sample event code (SE1, SE2...etc)



Sample Collection Procedures


Resampling



- Required if sample:
 - % Does not meet collection or QC requirements
 - % Is lost or damaged during shipping
 - % Is subject to lab error
- 30-day deadline
- Recollection *must* include original Sample Event Code (SE#) to correctly associate with original sample set

Participant Feedback – Q4

A PWS has two treatment plants, one treating groundwater and a second surface water. What monitoring schedule must it follow?

- a) *Quarterly over 12 months as SW*
- ~~b) *Mixed GW/SW system, three times over 12 months*~~ **No such schedule exists - a very wrong answer**
- c) *Twice during the 12-month sampling period as GW*
- The correct answer**  **d) *Quarterly for SW plant, twice during 12-month sampling period for GW plant***
- e) *None of the above*

Q4 - Discussion

- (a)...incorrect...the quarterly SW schedule only applies to the SW treatment plant EPTDS, and associated DSMRT locations (if the PWS must conduct the List 2 Screening Survey).
- (b)...incorrect...no such schedule exists. If a PWS happens to have a source that is mixed SW/GW and treated, the SW schedule applies to the treatment plant EPTDS, and associated DSMRT locations (if the PWS must conduct the List 2 Screening Survey).
- (c)...incorrect...the GW schedule requiring two collections 5 - 7 months apart within the 12-month sampling period and would only apply to the GW treatment plant EPTDS, and associated DSMRT locations (if the PWS must conduct the List 2 Screening Survey).
- (d)...CORRECT...the monitoring schedule is defined by the treatment facility water type, hence quarterly monitoring is required at the SW treatment plant EPTDS, and associated DSMRT locations if the PWS must conduct the List 2 Screening Survey. And, the GW schedule requiring two collections 5 - 7 months apart within the 12-month sampling period, would apply to the GW treatment plant EPTDS, and associated DSMRT locations if the PWS must conduct the List 2 Screening Survey
- (e)...incorrect, as (d) is the correct answer.



UCMR 2

Contracting with Laboratories

This Section Explains:

- Lab QC requirements
- Developing a contract
- Communication

Lab QC Requirements

EPA Methods

Analytical Method	Contaminants
List 1 Contaminants ~ Assessment Monitoring	
EPA Method 527:	5 flame retardants & 2 other priority contaminants
EPA Method 529:	3 explosives
List 2 Contaminants ~ Screening Survey	
EPA Method 521:	6 nitrosamines
EPA Method 525.2:	3 acetanilide parent pesticides
EPA Method 535:	6 acetanilide degradates

Copies of these methods are available at:

www.epa.gov/safewater/ucmr/ucmr2/methods.html

Lab QC Requirements

Contaminant MRLs

MRL = minimum reporting limit

- % EPA-approved labs must demonstrate they meet MRL requirements**
- % Demonstrated with:**
 - Calibration checks**
 - Daily Performance Check**

Lab QC Requirements

Contaminant MRLs (cont'd)

List 1 - Assessment Monitoring Contaminants		
Method	Contaminant	MRL (ug/L)
EPA Method 527	Dimethoate	0.7
	Terbufos sulfone	0.4
	2,2',4,4'-tetrabromodiphenyl ether (BDE-47)	0.3
	2,2',4,4',5-pentabromodiphenyl ether (BDE-99)	0.9
	2,2',4,4',5,5'-hexabromodiphenyl ether (BDE-153)	0.8
	2,2',4,4',6-pentabromodiphenyl ether (BDE-100)	0.5
	2,2',4,4',5,5'-hexabromobiphenyl (HBB)	0.7
EPA Method 529	2,4,6-trinitrotoluene (TNT)	0.8
	1,3-dinitrobenzene	0.8
	Hexahydro-1,3,5-trinitro-1,3,5-triazine (RDX)	1

Lab QC Requirements

Contaminant MRLs (cont'd)

List 2 - Screening Survey Contaminants		
Method	Contaminant	MRL (ug/L)
EPA Method 521	N-nitroso-diethylamine (NDEA)	0.005
	N-nitroso-dimethylamine (NDMA)	0.002
	N-nitroso-di-n-butylamine (NDBA)	0.004
	N-nitroso-di-n-propylamine (NDPA)	0.007
	N-nitroso-methylethylamine (NMEA)	0.003
	N-nitroso-pyrrolidine (NPYR)	0.002
EPA Method 525.2	Acetochlor	2
	Alachlor	2
	Metolachlor	1
EPA Method 535	Acetochlor ethane sulfonic acid (ESA)	1
	Acetochlor oxanilic acid (OA)	2
	Alachlor ESA	1
	Alachlor OA	2
	Metolachlor ESA	1
	Metolachlor OA	2

Lab QC Requirements

QC requirements include (not limited to):

- % Laboratory Fortified Blank (\leq MRL)
- % Calibration Checks
- % Daily Performance Check
- % Laboratory Fortified Sample Matrix (LFSM) and LFSM Duplicate (LFSMD)



Lab QC Requirements

Extra Samples for LFSM/LFSMD

- Labs will need extra samples collected from some locations
 - % Labs must extract an LFSM/LFSMD pair with each extraction batch, or with every 20 samples, whichever comes first
 - % Typically requires triplicate sample collection at some sampling locations

Developing a Contract

Use of EPA-Approved Labs

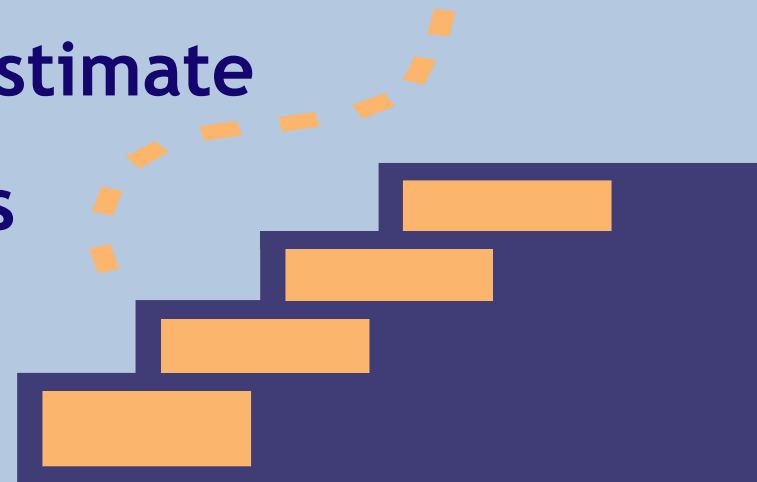
- Must use UCMR 2 EPA-approved labs
- Lab approved by method
- Current list available at:
<http://www.epa.gov/safewater/ucmr/ucmr2/labs.html>
- Subcontract labs post data to SDWARS



Developing a Contract

Steps to Follow

- **Define scope of analytical requirements**
 - % **What tier of monitoring? (i.e., Methods needed)**
 - % **How many locations?**
 - % **Based on EP water type, what is monitoring frequency?**
- **Develop bid sheet/cost estimate**
- **Solicit EPA-approved labs**
- **Award contract**
- **Work closely with lab**



Developing a Contract

Samples to be Analyzed – Field Samples

- Collected at EPTDS
- Collected at DSMRT (Screening Survey nitrosamines)
- Quarterly at surface water or GUDI; twice at groundwater
- Duplicates recommended for backup

Developing a Contract

Samples to be Analyzed - Other

- Internal QC samples
 - Replacement samples
 - Extra matrix samples
- % Labeling considerations



Developing a Contract

Data Delivery

- Labs report results to SDWARS within 120 days of sample collection
- Contract should include reporting specifics:
 - What to report
 - When to report
 - Certification that these data meet or exceed all required QC



Developing a Contract

Requesting Bids... more information

- Review Chapter 5 of:

[Reference Guide for the Second Cycle of the Unregulated Contaminant Monitoring Regulation \(UCMR 2\) \[EPA 815-R-06-016\]](#)

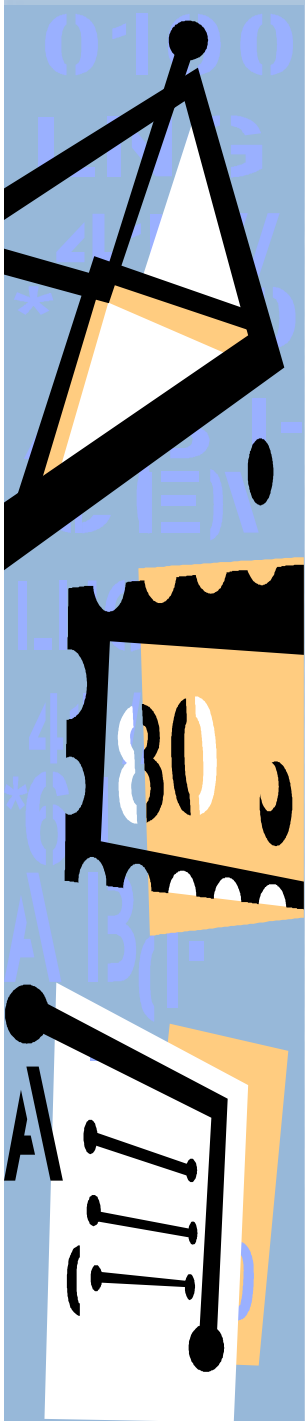
- Available at:

www.epa.gov/safewater/ucmr/ucmr2/utilities.html



Communication

- Request lab contact information
- Clarify sample bottles required and preservatives
- Set up sampling schedule
- Inform lab when samples shipped
- Lab notification to PWS when results posted to SDWARS



Participant Feedback – Q5

Which samples must be collected at the distribution system maximum residence time (DSMRT) location?

- a) List 2 - Screening Survey samples*
- b) List 1 - Assessment Monitoring samples*
- c) Method 535 - acetanilide degradates samples*
- d) Method 521 - nitrosamine samples*
- e) (a) and (b)*

The correct answer

Q5 - Discussion

IMPORTANT: Only applies to PWS that must conduct the Screening Survey (List 2).

- (a)...incorrect...samples do not need to be collected at the DSMRT for all List 2 Screening Survey methods, only for Method 521 - nitrosamines.
- (b)...incorrect...samples do not need to be collected at the DSMRT for ANY List 1 Assessment Monitoring methods.
- (c)...incorrect...samples do not need to be collected at the DSMRT for Method 535 - acetanilide degradates. This is a List 2 method, but is not Method 521 for nitrosamines.
- (d)...CORRECT...the ONLY samples that must be collected at the DSMRT for the List 2 Screening Survey are the Method 521 - nitrosamines. This requirement only applies to PWSs that must conduct List 2 Screening Survey monitoring, and that disinfect (subject to Stage 1 DBPR) such that they have established DSMRTs.
- (e)...incorrect...neither (a) nor (b) are correct answers.



UCMR 2

Reporting Requirements

This Section Explains:

- Where to report information
 - % SDWARS (PWSs serving >10K only)
 - % UCMR Sampling Coordinator
- Reporting prior to monitoring
- Reporting with monitoring results
- Data review process
- CCR and PN requirements

Where to Report

**** Most information is reported to SDWARS ****
PWSs serving >10K only

- **CDX account for SDWARS required**

- % **Spring 2006** - PWSs and States could upgrade SDWARS accounts for UCMR 2

- % **August 2006** - Customer retrieval keys (CRKs) issued to PWS and States that did not upgrade

- % Users can nominate others within organization

- % Still need a CDX account for SDWARS?

- Contact the UCMR Message Center (800-949-1581)*

- % **2007** - EPA-approved labs will get accounts

- % More information:

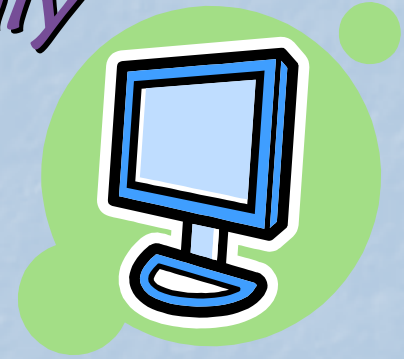
- www.epa.gov/safewater/ucmr/ucmr2/reporting.html



Electronic Reporting

Accessing SDWARS

PWSs serving >10K only

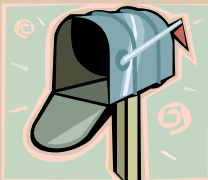


- Internet Accessible at:
cdx.epa.gov
- Active CDX account for SDWARS is required
- Screen-specific instructions and entry fields

Where to Report

UCMR Sampling Coordinator

- **Non-electronic reporting limited to:**
 - % **PWS applicability issues**
 - % **PWS schedule or inventory changes after August 2, 2007**
 - % **Groundwater representative sampling plan proposals submitted by May 4, 2007**



Mail: UCMR Sampling Coordinator,
USEPA, Technical Support Center,
26 West Martin Luther King Dr (MS 140)
Cincinnati, OH 45268

E-mail: UCMR_Sampling_Coordinator@epa.gov

Fax: (513) 569-7191

Information Prior to Monitoring *Through SDWARS* *PWSs serving >10K only*

- **Contacts**
- **Review/edit Inventory**
- **Sampling schedule**

Information Prior to Monitoring *Contact Information using SDWARS* *PWSs serving >10K only*

Must enter PWS official AND technical contacts

% Name

% Organization

% Mailing address

% Phone number

% E-mail



Due April 4, 2007 to SDWARS; Changes must be entered within 30 days

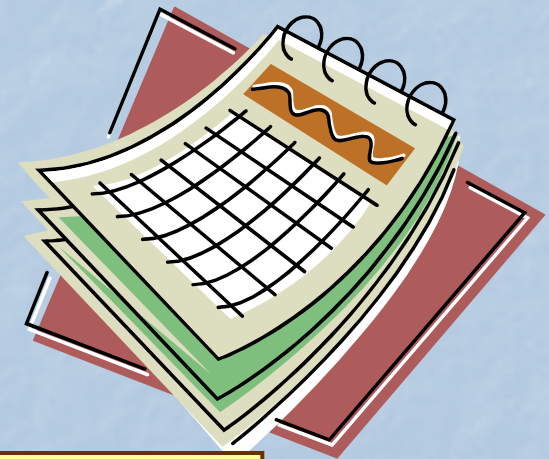
Information Prior to Monitoring

Inventory Information using SDWARS

PWSs serving >10K only

- PWSID
- PWS facility identification
- Sample location water type
- Sample point identification
- Sampling point type

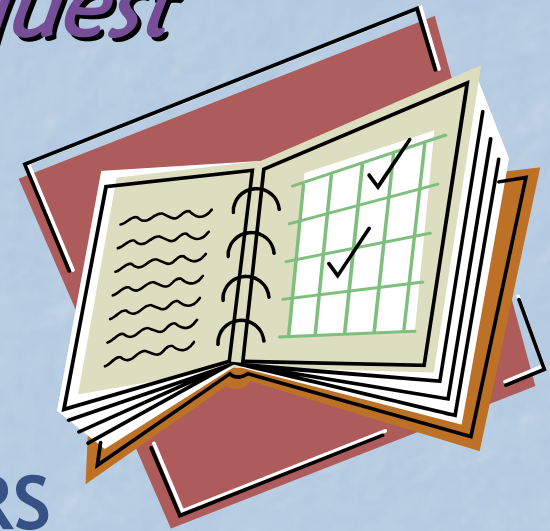
*Correspond to
data elements 1-5*



**Due by August 2, 2007 to SDWARS;
Changes within 30 days of change to SDWARS**

Information Prior to Monitoring *New Schedule Request*

- Any or all sampling points
- If made by August 2, 2007, change can be made in SDWARS
- After this, must send request to UCMR Sampling Coordinator with justification



Participant Feedback – Q6

Specific to PWSs...how many have...?

- a) Yet to establish a CDX account for SDWARS*
- b) A CDX account (for SDWARS/UCMR2), but have yet to enter SDWARS contacts*
- c) A CDX account (for SDWARS/ UCMR2) but only have added one contact*
- d) A CDX account (for SDWARS/ UCMR2) and added both official and technical contacts*
- e) In addition to (d), have reviewed sample location inventory and schedule*

 **The PWS goal!**

Q6 - Discussion

- (a)...if your PWS has yet to establish a CDX account for SDWARS to report under UCMR 2, this must immediately be addressed.
- (b)...if your PWS has a CDX account for SDWARS for UCMR 2, you must add BOTH an official and a technical contact prior to April 4, 2007! Please go to SDWARS and take care of this ASAP! No need to wait!
- (c)...if your PWS has a CDX account for SDWARS for UCMR 2, you must enter BOTH an official and a technical contact. Not just one. If one individual serves both roles, then that individual should be entered twice, once as an official contact, and once as a technical contact. This must be completed by April 4, 2007.
- (d)...if your PWS has a CDX account for SDWARS for UCMR 2 and both an official and technical contact has been added, you have met the April 4, 2007 deadline. You may add additional contacts designating them as “other.” Now you should review your inventory of sample locations for accuracy and completeness as well as your sampling schedule. Now is the time to edit or revise this information as you can only make these revisions in SDWARS until August 2, 2007.
- (e)...if your PWS has a CDX account for SDWARS to report under UCMR 2, where both an official and technical contact has been added and you have reviewed both your inventory of sample locations and have determined your sampling schedule, congratulations! Document your sampling schedule on your PWS compliance calendar and begin to consider budget and lead time for procuring laboratory services to meet your schedules monitoring requirements.

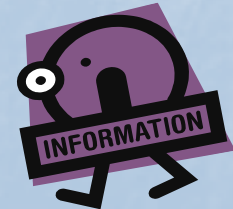
Information Prior to Monitoring



GW Representative Entry Points

- Allows PWSs to monitor at representative GW EPTDS
- Groundwater PWSs with multiple EPTDS eligible
- May submit:
 - % Previously approved plan from Phase II/V or UCMR 1
 - % Proposal for GW representative sampling
- Request information from the UCMR Sampling Coordinator:

UCMR_Sampling_Coordinator@epa.gov



Due by May 4, 2007 to the UCMR Sampling Coordinator

Information Prior to Monitoring *Notification and Applicability*

Contact the UCMR Sampling Coordinator if:

- Not contacted about UCMR 2 by June 4, 2007

Note: If a PWS meets UCMR 2 applicability, it is subject to the requirements, regardless of notification by the State or EPA.

- Do not meet applicability requirements

- % Purchase all finished water

- % TNCWSs

- Have a change in status

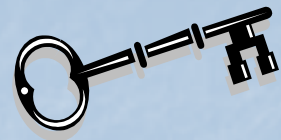
- % Source

- % System type



Due ASAP

Reporting Prior to Monitoring



Key Dates

Requirement	Due
Information to Be Reported to SDWARS (PWS serving >10K only)	
Contact information	April 4, 2007
Sampling location/inventory information	August 2, 2007
Change sampling schedule	August 2, 2007
Information to Be Reported to UCMR Sampling Coordinator	
UCMR 2 applicability or change in status	ASAP
GW representative sampling location proposal (optional)	May 4, 2007
Notify EPA if not contacted re: UCMR 2	ASAP after June 4, 2007

Information with Monitoring Results *Overview*

15 Data Elements

- % 5 from PWSs, prior to monitoring (also posted with results by labs)
- % 1 additional from PWS, with results
- % 9 posted by lab, with results



Data Elements 1-5

Reported Prior to and with Sample Results

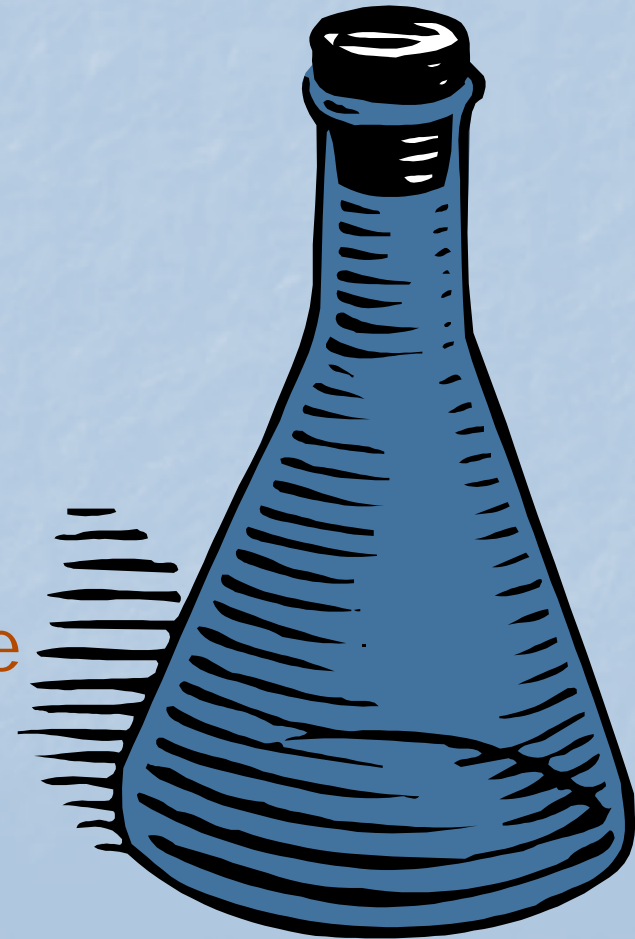
- 1. PWSID
- 2. PWS Facility ID
- 3. Water Source Type
- 4. Sampling Point ID
- 5. Sampling Point Type



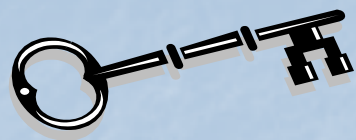
Data Elements 6-15

Reported with Sample Results

- 6. Disinfectant Residual Type *(Screening Survey only)*
- 7. Sample Collection Date
- 8. Sample ID
- 9. Contaminant
- 10. Analytical Method
- 11. Sample Analysis Type
- 12. Analytical Results - Sign
- 13. Analytical Result - Value
- 14. Lab ID
- 15. Sample Event



Reporting with Monitoring



Key Dates

Requirement	Due
Lab posts results & associated data	120 days from sample collection
PWSs review & approve data	60 days from lab posting of data*
<i>* After this date, data considered approved by PWS, available for EPA & State review, prior to public release.</i>	

Consumer Confidence Reports *Overview*

- Applies to CWSs only
- CWSs must report average & range of detected contaminants
- CWSs may briefly explain reason for UCMR monitoring



Consumer Confidence Report

Suggested Language

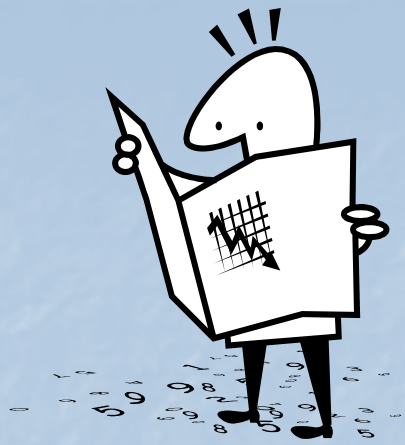
The explanation may read as follows:



Unregulated contaminants are those that don't yet have a drinking water standard set by USEPA. The purpose of monitoring for these contaminants is to help EPA decide whether the contaminants should have a standard.

More information about CCR at:

www.epa.gov/safewater/ccr



Public Notification (PN)

Overview

- UCMR 2 PN applies to all CWSs and NTNCWSs
- Used to notify public of:
 - % Availability of UCMR 2 results
 - % Violations of UCMR 2 requirements

Public Notification *Resources*

- **EPA's *Public Notification Handbook***
(EPA 816-R-00-010, June 2000)
- **Available at:**
<http://www.epa.gov/safewater/pws/pn/handbook.pdf>
- **Revised handbook available in next few months**



MORE INFORMATION

- **UCMR2 implementation question?**

- % Call the **UCMR Message Center:**
800-949-1581

- **General UCMR 2 question?**

- % Call the **Safe Drinking Water Hotline:**
800-426-4791

- **CDX/SDWARS question?**

- % Call the **CDX Help Desk (SDWARS):**
888-890-1995

- **UCMR 2 Website:**

- <http://www.epa.gov/safewater/ucmr/ucmr2/>

