

FOR WIRE TRANSMISSION: 9:00 A.M. EDT, TUESDAY, APRIL 23, 2002

Duke Tran: (202) 606-5344 (Analysis)
 Kathy Albetski: 606-5360 (Estimates)
 E-mail inquiries: RegRelease@bea.gov

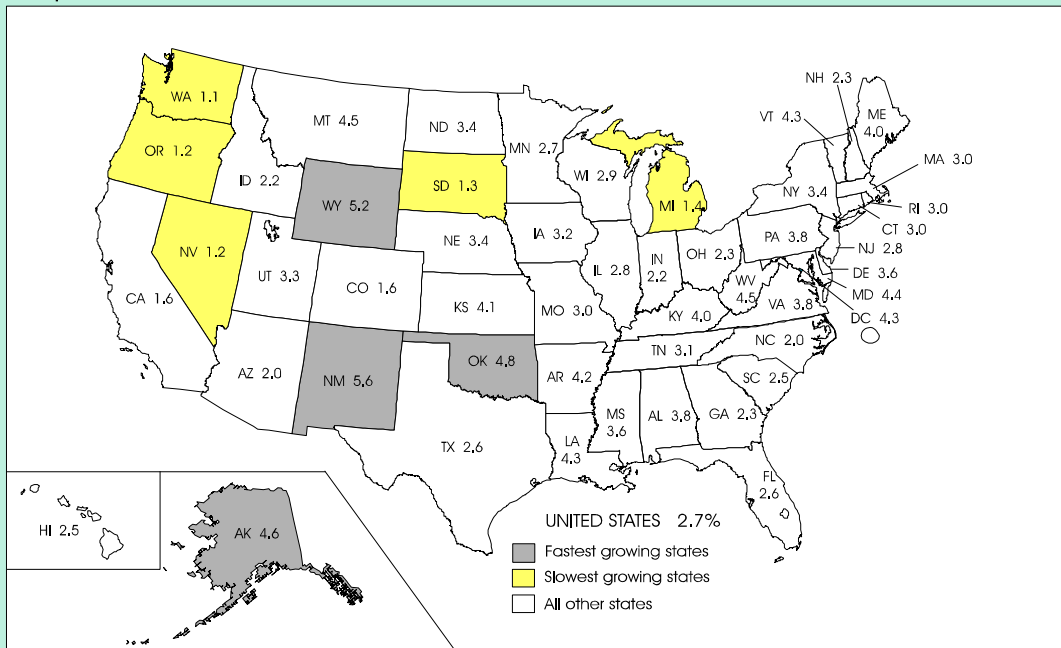
BEA 02-10

2001 STATE PER CAPITA PERSONAL INCOME and STATE PERSONAL INCOME---FOURTH QUARTER 2001

Four relatively energy-intensive states — New Mexico, Wyoming, Oklahoma, and Alaska — led the nation in per capita personal income growth in 2001, according to preliminary estimates released by the U.S. Bureau of Economic Analysis. The five states with the slowest growth in per capita income were Washington, Nevada, Oregon, South Dakota, and Michigan (see map).

For the nation, per capita income grew 2.7 percent, to \$30,271 in 2001, after growing 5.8 percent in 2000. The 2.7-percent increase was the smallest growth rate since the 1990-91 recession. The slowdown in 2001 from the previous year reflected a substantial deceleration in personal income growth to 3.7 percent in 2001 from 7.0 percent in 2000; population growth also decelerated slightly to 0.9 percent from 1.1 percent.

Per Capita Personal Income Growth in 2001



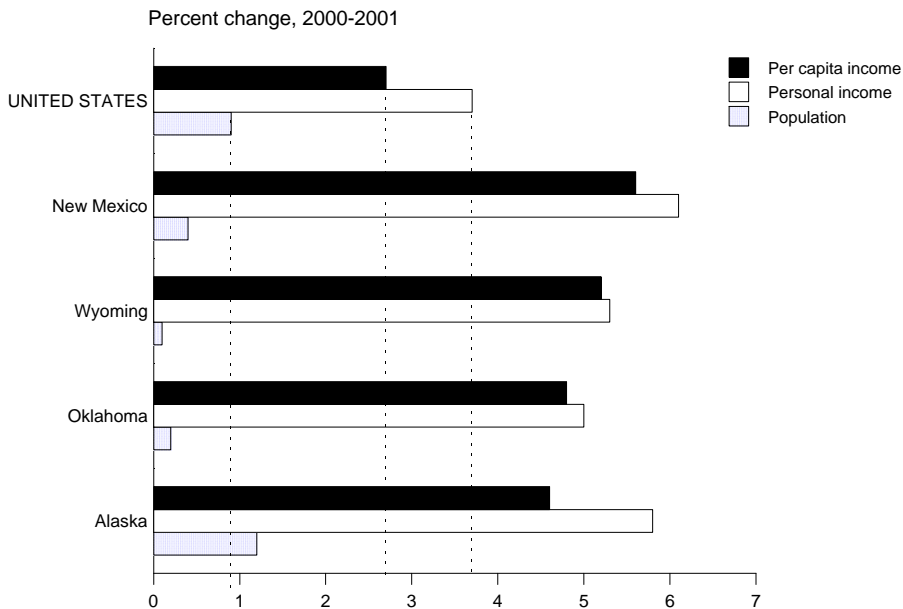
U.S. Bureau of Economic Analysis

Per Capita Income Growth in 2001

Fastest growing states.— In 2001, the four states with the fastest growth in per capita incomes were New Mexico (5.6 percent), Wyoming (5.2 percent), Oklahoma (4.8 percent), and Alaska (4.6 percent). Of these states, only Alaska had per capita income above the U.S. average of \$30,271 (see table 1). By size, these four states together accounted for about 2.0 percent of total personal income and contributed 2.7 percent of total income growth in 2001.

In all four states, growth rates in personal income exceeded the U.S. average of 3.7 percent, and except in Alaska, growth rates in population were below the U.S. average of 0.9 percent (see the chart below).

**Growth in per capita income and components
for the U.S. and selected states, 2000-2001**



In all four fastest growing states, net earnings was the major contributor to personal income growth. Transfer payments also contributed substantially to personal income growth in New Mexico, Oklahoma, and Alaska (see table 2, contribution to percent change in personal income, and **Definitions** on page 6).

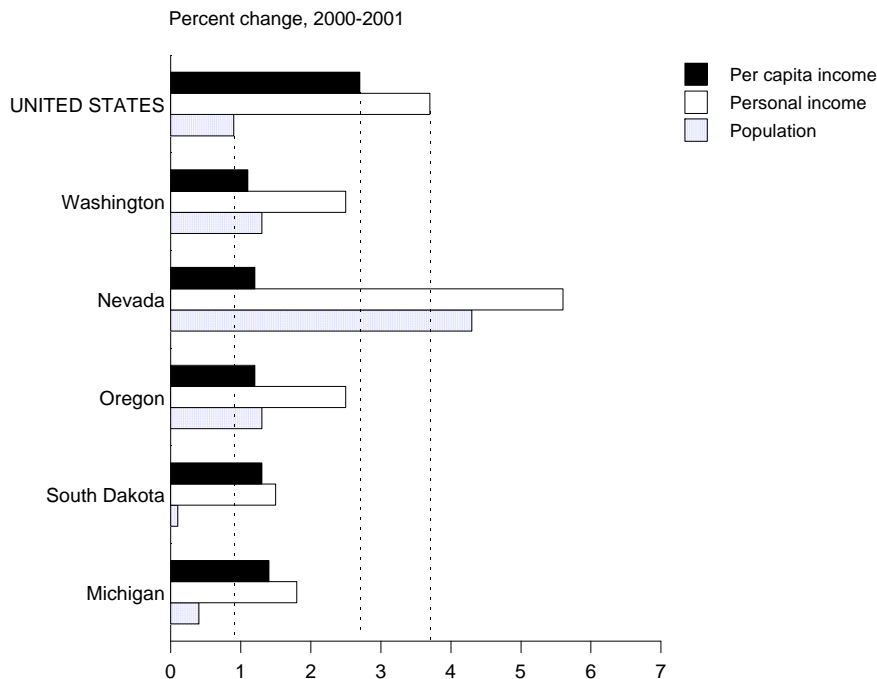
By industry, all four states had double-digit increases in mining earnings (see table 3), but the major contributors to growth in earnings by place of work were earnings in government and in services (table 4). The strength in government earnings in these states was mainly in state and local government. In addition:

- m In New Mexico, earnings in farms, construction, and retail trade contributed substantially to earnings growth.
- m In Oklahoma and Alaska, earnings in construction and in transportation and public utilities contributed substantially.
- m In Wyoming, earnings in construction and retail trade contributed substantially to earnings growth.

Slowest growing states.— In 2001, the five states with the slowest growth in per capita income were Washington (1.1 percent), Nevada (1.2 percent), Oregon (1.2 percent), South Dakota (1.3 percent), and Michigan (1.4 percent). Of these states, only Washington had per capita income above the U.S. average of \$30,271.

Except for Nevada, personal income growth in these states was below the U.S. average of 3.7 percent; in South Dakota and Michigan, population growth was below the U.S. average of 0.9 percent. Nevada's population growth, which was more than four-times the 0.9-percent U.S. average, offset fast growth in net earnings and transfer payments.

**Growth in per capita income and components
for the U.S. and selected states, 2000-2001**



In Michigan, South Dakota, Oregon, and Washington, personal income growth was held back by slow growth in net earnings.

- m In Michigan, declines in earnings in both durable and nondurable goods manufacturing and wholesale trade were the major contributors to the slow earnings growth, and declines in construction and farms also contributed. The declines in manufacturing partly reflected a slowdown in the motor vehicles industries.
- m In South Dakota, a large decline in farm earnings was the major contributor to the weak earnings growth. In addition, a decline in durable goods manufacturing also contributed to weak earnings growth.
- m In Washington and Oregon, declines in wholesale trade and construction also contributed substantially, and a large decline in durable goods manufacturing in Oregon also contributed to the slow earnings growth. Washington's services earnings grew the slowest, at only 0.7 percent, compared with 5.7 percent in the nation.

Ranking of State Per Capita Income

In 2001, per capita income ranged from \$41,930 in Connecticut to \$21,643 in Mississippi.

The ranking of states by per capita income changed little between 2000 and 2001. Wyoming, Nebraska, and Kansas increased more than two positions in rank, while Georgia and Oregon declined more than two positions in rank (see table 1).

The 10 states with the highest per capita incomes in 2001 were:

	Dol lars		Rank		Percent change
	2000	2001	2000	2001	
Connecticut	40,702	41,930	1	1	3.0
Massachusetts	37,704	38,845	2	2	3.0
New Jersey	37,118	38,153	3	3	2.8
New York	34,689	35,884	4	4	3.4
Maryland	33,482	34,950	5	5	4.4
New Hampshire	33,169	33,928	6	6	2.3
Colorado	32,434	32,957	7	7	1.6
Minnesota	31,935	32,791	9	8	2.7
Illinois	31,856	32,755	10	9	2.8
California	32,149	32,678	8	10	1.6

Except for New Hampshire, Colorado, and California, growth rates in per capita income in these states exceeded or equaled the U.S. average of 2.7 percent in 2001.

The 10 states with the lowest per capita incomes in 2001 were:

	Dol lars		Rank		Percent change
	2000	2001	2000	2001	
Mississippi	20,900	21,643	50	50	3.6
West Virginia	21,738	22,725	49	49	4.5
Arkansas	21,995	22,912	47	48	4.2
New Mexico	21,931	23,162	48	47	5.6
Montana	22,518	23,532	46	46	4.5
Louisiana	23,090	24,084	45	45	4.3
Utah	23,436	24,202	44	44	3.3
Idaho	23,727	24,257	41	43	2.2
Alabama	23,521	24,426	43	42	3.8
South Carolina	24,000	24,594	40	41	2.5

Only South Carolina and Idaho had growth rates in per capita income that were below the U.S. average of 2.7 percent in 2001.

State Personal Income Growth in Fourth Quarter of 2001

In the fourth quarter of 2001, U.S. personal income decreased \$16.7 billion, for a drop of 0.2 percent (at quarterly rates) after growing 0.3 percent in the third quarter (see table 5).

In the fourth quarter of 2001, personal income declined in 34 states and was unchanged in Massachusetts and New Mexico. Personal income grew slightly in 14 states and the District of Columbia, ranging from 0.1 percent in Maine, Tennessee, and Florida to 0.5 percent in Alaska.

By industry, declines in farms, in manufacturing, and in wholesale trade were the major contributors to the decline in earnings by place of work (see tables 6 and 7). Most states shared the weakness in these major industries. The three states with the largest declines in growth rates in farm earnings were Montana, Kansas, and Oklahoma. New Mexico, Connecticut, and Utah had the largest declines in growth rates in manufacturing earnings, and Hawaii, Arkansas, and Colorado, in wholesale trade.

* * *

Note on the Estimates of State Personal Income

In the preliminary annual state personal income estimates presented here, U.S. personal income—the sum of the estimates for all states—increased 3.7 percent in 2001; the national income and product accounts (NIPA's) estimate of personal income, which was released on March 29, 2002, showed an increase of 4.9 percent. The 1.2-percentage-point, or \$90 billion, difference primarily reflects the incorporation of newly available source data for wage and salary disbursements from tabulations of unemployment insurance (UI) and for farm proprietors' income from the U.S. Department of Agriculture (USDA) into the state estimates.

In July, as part of the regular annual revision of the NIPA's, the 2001 national estimate will be revised to incorporate the four quarters of UI tabulations from the U.S. Bureau of Labor Statistics (BLS). These BLS tabulations of the UI data cover wages and salaries, bonuses, and other nonregular payments for virtually all workers. The UI data will replace BEA's estimates based on the BLS monthly establishment survey, which covers only the average hourly earnings of production and nonsupervisory workers and excludes bonuses and other nonregular payments. The revision of the NIPA's will also incorporate the latest USDA and other newly available data that are more complete, more detailed, or more consistent than those that were previously incorporated in the NIPA's.

* * *

Definitions

Personal income is the income received by all persons from participation in production, from government and business transfer payments, and from government interest. Personal income is the sum of net earnings by place of residence, rental income of persons, personal dividend income, personal interest income, and transfer payments. Net earnings is earnings by place of work — the sum of wage and salary disbursements (payrolls), other labor income, and proprietors' income — less personal contributions for social insurance, plus an adjustment to convert earnings by place of work to a place-of-residence basis. Personal income is measured before the deduction of personal income taxes and other personal taxes and is reported in current dollars (no adjustment is made for price changes).

The estimate of personal income in the United States is derived as the sum of the state estimates; it differs from the estimate of personal income in the national income and product accounts (NIPA's) because of differences in coverage, in the methodologies used to prepare the estimates, and in the timing of the availability of source data.

Per capita personal income is the annual total personal income of residents divided by resident population as of July 1.

* * *

BEA's major national, international, regional, and industry estimates; the Survey of Current Business; and BEA news releases are available without charge on BEA's Web site:

<www.bea.gov>

Summary BEA estimates are available on recorded messages at the time of public release at the following telephone numbers:

(202) 606-5306 Gross domestic product
606-5303 Personal income and outlays
606-5362 U.S. international transactions

Most of BEA's estimates and analyses are published in the Survey of Current Business, BEA's monthly journal. Subscriptions and single copies of the printed Survey are for sale by the Superintendent of Documents, U.S. Government Printing Office. Internet: bookstore.gpo.gov; phone: 202-512-1800; fax: 202-512-2250; mail: SSOP, Washington, DC 20402-0001.

* * *

Next state personal income release — July 24, 2002, at 9:00 AM EDT for
State Personal Income, First Quarter 2002

Table 2.—Personal Income by Component, by State and Region, 2000-2001

	Percent change				Percent change in personal income	Contribution to percent change in personal income (percentage points)			Dollar change (millions)			
	Personal income	Net earnings ¹	Dividends, interest, and rent	Transfer payments		Net earnings ¹	Dividends, interest, and rent	Transfer payments	Personal income	Net earnings ¹	Dividends, interest, and rent	Transfer payments
United States	3.7	3.4	2.0	7.6	3.7	2.35	0.37	0.97	306,991	194,981	30,977	81,032
New England												
Connecticut	3.5	3.5	1.3	7.0	3.5	2.48	.23	.75	4,817	3,448	322	1,046
Maine	4.8	4.8	1.8	7.9	4.8	3.11	.33	1.31	1,540	1,008	108	425
Massachusetts	3.4	2.9	2.5	7.5	3.4	2.08	.43	.88	8,113	4,985	1,029	2,098
New Hampshire	3.9	3.8	2.3	7.4	3.9	2.71	.42	.75	1,595	1,115	172	308
Rhode Island	3.8	3.9	1.1	6.8	3.8	2.54	.20	1.11	1,175	775	61	338
Vermont	4.8	5.2	1.0	8.6	4.8	3.42	.20	1.22	792	560	32	200
Mideast												
Delaware	4.9	4.9	2.3	8.9	4.9	3.39	.44	1.06	1,191	826	109	258
District of Columbia	4.4	4.9	2.2	5.2	4.4	3.32	.45	.64	978	736	100	142
Maryland	5.6	6.3	2.0	7.7	5.6	4.53	.35	.77	10,044	8,054	627	1,363
New Jersey	3.5	3.3	1.9	6.9	3.5	2.39	.33	.74	10,838	7,489	1,025	2,325
New York	3.6	3.5	1.3	6.4	3.6	2.37	.23	.97	23,486	15,589	1,520	6,376
Pennsylvania	3.8	3.6	1.8	6.9	3.8	2.38	.32	1.10	13,806	8,642	1,175	3,989
Great Lakes												
Illinois	3.2	2.9	2.0	7.2	3.2	2.02	.38	.80	12,703	8,003	1,514	3,185
Indiana	2.6	1.4	3.3	8.4	2.6	.93	.61	1.10	4,329	1,532	996	1,801
Michigan	1.8	.6	2.8	6.9	1.8	.41	.49	.91	5,239	1,201	1,407	2,631
Ohio	2.4	1.8	1.2	7.1	2.4	1.19	.22	1.01	7,687	3,774	701	3,212
Wisconsin	3.5	3.1	2.1	7.6	3.5	2.10	.41	.95	5,212	3,163	619	1,430
Plains												
Iowa	3.1	2.5	2.1	7.3	3.1	1.66	.43	.99	2,375	1,283	329	762
Kansas	4.2	4.3	2.2	7.4	4.2	2.89	.43	.93	3,131	2,128	317	686
Minnesota	3.5	3.2	2.5	7.5	3.5	2.23	.50	.80	5,570	3,517	794	1,259
Missouri	3.5	2.9	2.0	8.4	3.5	1.90	.38	1.22	5,349	2,899	583	1,867
Nebraska	3.4	3.3	1.2	7.7	3.4	2.20	.26	.96	1,618	1,040	124	456
North Dakota	2.3	1.2	1.6	7.6	2.3	.79	.34	1.19	366	124	53	188
South Dakota	1.5	-.1	2.2	7.7	1.5	-.04	.48	1.02	289	-8	95	201
Southeast												
Alabama	4.1	3.8	1.4	8.4	4.1	2.48	.25	1.41	4,341	2,601	260	1,480
Arkansas	4.7	4.4	2.8	7.8	4.7	2.83	.51	1.38	2,778	1,665	299	813
Florida	4.8	5.3	1.7	8.2	4.8	3.15	.42	1.24	21,449	14,056	1,883	5,510
Georgia	4.2	3.8	3.0	8.8	4.2	2.76	.50	.97	9,682	6,303	1,151	2,229
Kentucky	4.5	3.7	3.1	9.1	4.5	2.39	.55	1.56	4,389	2,332	534	1,523
Louisiana	4.2	4.7	2.5	3.8	4.2	3.10	.44	.66	4,333	3,195	455	683
Mississippi	3.9	2.5	3.6	8.9	3.9	1.60	.58	1.69	2,310	955	348	1,007
North Carolina	3.4	2.2	2.7	10.1	3.4	1.52	.50	1.35	7,312	3,299	1,089	2,926
South Carolina	3.5	2.3	2.8	9.5	3.5	1.53	.51	1.44	3,363	1,482	488	1,393
Tennessee	3.8	2.8	2.0	9.9	3.8	1.95	.31	1.56	5,650	2,891	451	2,309
Virginia	5.0	5.3	1.9	8.5	5.0	3.85	.35	.80	11,051	8,520	768	1,764
West Virginia	4.2	4.3	1.6	6.0	4.2	2.57	.29	1.37	1,665	1,010	115	539
Southwest												
Arizona	4.8	4.8	2.6	7.8	4.8	3.26	.49	1.01	6,156	4,214	638	1,305
New Mexico	6.1	6.6	1.6	9.2	6.1	4.32	.29	1.45	2,423	1,726	117	580
Oklahoma	5.0	5.2	2.0	7.7	5.0	3.46	.36	1.20	4,097	2,827	293	977
Texas	4.5	4.4	2.1	8.6	4.5	3.22	.32	.96	26,154	18,740	1,858	5,557
Rocky Mountain												
Colorado	3.8	3.8	2.0	8.2	3.8	2.78	.36	.69	5,369	3,896	505	968
Idaho	3.9	3.3	2.2	9.8	3.9	2.30	.39	1.26	1,217	708	119	388
Montana	4.7	5.0	1.1	8.3	4.7	3.07	.25	1.34	946	623	51	272
Utah	4.6	4.4	2.7	8.6	4.6	3.25	.45	.87	2,402	1,706	237	459
Wyoming	5.3	6.2	2.5	7.2	5.3	3.83	.65	.85	721	518	88	115
Far West												
Alaska	5.8	6.4	1.7	7.6	5.8	4.27	.29	1.23	1,076	794	54	228
California	3.1	2.9	2.3	6.4	3.1	2.04	.40	.70	34,361	22,294	4,396	7,670
Hawaii	3.5	3.8	.7	6.7	3.5	2.61	.13	.81	1,198	880	44	273
Nevada	5.6	6.2	1.2	10.5	5.6	4.26	.26	1.06	3,321	2,539	153	630
Oregon	2.5	1.7	1.2	8.6	2.5	1.14	.25	1.13	2,386	1,079	233	1,076
Washington	2.5	1.7	1.6	8.4	2.5	1.22	.29	.98	4,593	2,243	536	1,814
BEA regions												
New England.....	3.6	3.4	2.0	7.4	3.6	2.38	.35	.89	18,033	11,891	1,724	4,416
Mideast.....	3.9	3.9	1.7	6.7	3.9	2.65	.29	.93	60,343	41,336	4,555	14,452
Great Lakes.....	2.7	2.0	2.1	7.3	2.7	1.34	.40	.93	35,169	17,674	5,237	12,258
Plains.....	3.4	3.0	2.1	7.8	3.4	2.02	.42	1.00	18,699	10,985	2,295	5,420
Southeast.....	4.3	4.0	2.2	8.4	4.3	2.65	.43	1.22	78,326	48,308	7,841	22,176
Southwest.....	4.7	4.6	2.2	8.4	4.7	3.31	.35	1.01	38,831	27,506	2,907	8,418
Rocky Mountain.....	4.1	4.0	2.1	8.5	4.1	2.89	.39	.86	10,654	7,451	1,001	2,202
Far West.....	3.2	2.8	2.0	7.0	3.2	2.01	.36	.79	46,936	29,829	5,416	11,690

1. Net earnings is earnings by place of work -- the sum of wage and salary disbursements (payrolls), other labor income, and proprietors' income -- less personal contributions for social insurance plus an adjustment to convert earnings by place of work to a place-of-residence basis.

Note: Estimates may not add to totals because of rounding.
Source: U.S. Bureau of Economic Analysis

Table 3.—Earnings by Major Industry, by State and Region, 2000-2001

	Percent change											
	Earnings by place of work ¹	Earnings by industry										
		Farms	Mining	Construction	Durable goods manufacturing	Nondurable goods manufacturing	Transportation and public utilities	Wholesale trade	Retail trade	Finance, insurance, and real estate	Services	Government
United States	3.5	-2.3	9.6	5.1	-4.3	-1.3	4.0	-3.6	3.9	6.5	5.7	5.7
New England												
Connecticut	3.5	-13.8	7.5	6.5	-3.4	-2.5	4.9	1.0	-2.0	7.2	4.2	10.9
Maine	5.1	-2.8	24.1	3.2	.9	-4.2	5.3	-2	6.5	8.7	8.4	5.5
Massachusetts	2.9	-2.1	13.5	11.5	-6.1	.5	3.8	-10.3	4.3	5.5	4.5	6.3
New Hampshire	4.1	10.7	11.4	15.7	-4.0	-4.9	4.7	1.0	4.9	5.2	6.3	6.7
Rhode Island	4.2	-5.4	8.7	2.1	-1.1	-6	4.8	-7.5	1.9	11.9	8.2	3.4
Vermont	5.4	8.4	4.2	5.0	4.6	-6.0	5.0	1.4	5.4	9.1	7.0	6.3
Mideast												
Delaware	5.3	-15.2	^{/2/}	1.8	-2.2	4.2	4.7	1.4	4.1	15.1	6.2	.8
District of Columbia	6.1	---	^{/2/}	-.9	-4.9	-3.0	2.6	-13.6	4.5	6.0	9.2	4.5
Maryland	6.5	21.9	20.2	8.7	4.5	.4	6.6	-1.6	4.4	8.8	7.2	7.7
New Jersey	3.3	-9.9	6.7	12.6	2.4	-10.3	3.6	-2.9	5.5	2.6	7.6	4.0
New York	3.6	47.2	1.4	6.4	-1.3	1.9	3.8	-5.0	3.6	4.4	5.2	2.9
Pennsylvania	3.7	3.7	4.7	5.7	-2.2	-7	3.7	-2.1	4.2	5.9	6.4	4.8
Great Lakes												
Illinois	3.0	-33.3	7.5	4.5	-2.9	2.4	2.8	-4.4	4.3	6.2	4.9	4.7
Indiana	1.3	8.9	10.2	.5	-5.7	-2.7	4.5	-3.7	2.6	7.3	6.4	2.6
Michigan6	-5.1	3.6	-1.0	-5.3	-4.5	4.3	-8.3	3.2	8.6	4.4	5.1
Ohio	1.8	-26.0	10.3	-1.1	-5.0	-2.0	2.9	-4.4	2.2	7.8	6.6	4.0
Wisconsin	3.1	42.7	3.1	2.3	-4.1	1.8	5.0	-1.9	2.2	6.5	5.9	6.8
Plains												
Iowa	2.6	-14.9	2.9	4.7	-.1	2.0	1.8	-5.0	2.9	8.5	5.8	4.8
Kansas	4.5	24.9	10.0	1.1	5.1	.7	1.1	-2.7	3.2	7.5	7.2	5.1
Minnesota	3.3	-49.7	-10.3	5.8	-1.7	3.1	4.6	-.8	4.9	8.7	4.3	7.3
Missouri	2.9	-15.3	7.2	5.8	-1.3	-4.9	2.0	-2.2	3.6	4.5	5.9	4.0
Nebraska	3.4	4.0	7.1	-1.1	-5.3	2.9	6.3	-3.7	1.9	6.0	6.3	4.4
North Dakota	1.7	-62.2	13.0	-2.5	7.3	3.5	6.1	-1.5	4.4	5.6	3.6	12.2
South Dakota3	-39.3	-3.0	4.8	-11.1	2.8	5.2	8.7	2.9	11.6	1.4	13.0
Southeast												
Alabama	3.8	40.1	.4	3.8	-2.9	-.4	4.3	-2.6	3.0	6.3	7.0	4.2
Arkansas	4.5	21.3	18.1	4.0	-3.2	2.3	8.3	-2.1	4.0	4.5	6.2	4.6
Florida	5.4	-2.4	-18.7	7.8	.9	.8	6.5	-1.2	6.8	7.2	7.2	4.0
Georgia	3.9	14.8	-1.6	4.1	-4.4	-3.0	4.6	-4.2	5.0	7.9	6.9	5.9
Kentucky	3.9	-21.7	10.3	3.2	2.5	-.6	4.4	-2.3	2.1	4.5	6.3	8.7
Louisiana	4.8	4.9	16.7	-1.5	5.1	1.4	8.9	-.3	3.2	3.8	6.6	4.3
Mississippi	2.4	46.8	28.9	-5.0	-5.8	-1.8	3.9	-4.5	2.0	4.6	4.2	4.3
North Carolina	2.3	-11.0	5.9	3.1	-5.3	-3.5	4.2	-1.7	3.7	5.8	6.5	4.1
South Carolina	2.4	-18.0	-9.5	1.8	-1.3	-3.8	5.1	-5.1	2.3	5.7	7.3	3.0
Tennessee	2.9	-37.7	1.5	-1.7	-5.6	.5	3.1	-4.6	2.7	6.1	7.8	6.2
Virginia	5.2	-30.1	8.2	7.3	2.4	1.0	1.0	-6.8	3.8	13.1	8.0	5.0
West Virginia	4.4	-68.5	12.5	9.8	-.8	2.0	3.6	-.8	2.4	3.6	6.1	3.9
Southwest												
Arizona	4.8	28.8	2.6	6.9	-1.4	-7.3	5.7	.5	5.5	10.2	2.1	11.8
New Mexico	6.6	39.5	12.4	9.1	-3.1	2.2	5.2	-2.0	4.0	5.0	5.1	9.7
Oklahoma	5.3	4.5	10.0	15.6	-3.6	-1.3	6.9	0	3.6	6.0	5.0	8.9
Texas	4.4	-2.3	9.4	4.5	-.5	2.1	3.0	-4.9	5.0	6.9	7.4	5.1
Rocky Mountain												
Colorado	3.8	-10.5	30.2	7.5	-.9	-1.7	-3.5	-4.5	5.4	3.5	5.8	6.8
Idaho	3.4	7.5	-5.8	10.9	-15.6	0	7.3	-.8	5.0	6.4	7.1	8.5
Montana	5.2	-47.4	18.9	10.3	1.5	1.9	4.2	-1.6	4.2	5.3	5.1	9.9
Utah	4.5	8.9	8.0	2.8	-1.2	2.0	4.2	-3.7	3.5	8.0	5.3	8.6
Wyoming	6.4	-42.2	11.1	6.3	3.9	-.1	3.3	4.7	4.8	5.8	8.2	7.6
Far West												
Alaska	6.5	1.1	13.8	9.3	-4.4	7.2	6.6	-4.4	4.0	3.9	7.0	6.0
California	2.9	3.8	12.9	8.3	-13.3	-3.3	6.0	-2.4	4.4	8.9	4.2	8.2
Hawaii	3.9	2.6	2.6	3.0	13.0	2.7	3.4	-2.6	3.1	4.5	5.1	3.7
Nevada	6.3	-18.2	-3.9	4.7	14.5	4.2	10.7	3.3	6.6	6.0	5.8	8.2
Oregon	1.7	8.4	-3.3	-2.4	-6.7	-.7	-.3	-7.6	2.9	6.8	6.0	5.9
Washington	1.8	-7.6	.7	-.3	1.3	-5.0	2.2	-5.6	.2	8.1	.7	7.6
BEA regions												
New England.....	3.4	-3.8	9.6	9.2	-4.1	-1.5	4.4	-5.5	2.8	6.5	5.0	7.2
Mideast.....	4.0	15.7	5.0	7.5	-.7	-2.4	4.0	-3.4	4.2	4.8	6.3	4.3
Great Lakes.....	2.0	-12.0	7.6	1.2	-4.7	-.8	3.5	-4.9	3.0	7.1	5.5	4.6
Plains.....	3.1	-21.6	3.6	4.2	-.7	-.3	3.1	-2.0	3.7	7.1	5.4	5.8
Southeast.....	4.1	1.8	9.8	3.9	-2.1	-1.1	4.7	-3.1	4.2	7.2	7.0	4.8
Southwest.....	4.7	6.4	9.4	5.9	-1.0	.9	3.7	-3.8	4.9	7.4	6.2	6.9
Rocky Mountain.....	4.1	-6.6	17.9	7.0	-3.8	-.3	-.6	-3.5	4.8	4.7	5.8	7.7
Far West.....	2.9	2.4	9.7	6.0	-10.7	-3.0	5.2	-3.0	3.8	8.5	4.0	7.7

1. Earnings by place of work is the sum of wage and salary disbursements (payrolls), other labor income, and proprietors' income. Also included agricultural services, forestry, and fishing.

2. Data are suppressed to avoid disclosure of confidential information.
Source: U.S. Bureau of Economic Analysis

Table 4.—Contribution to Percent Change in Earnings, by State and Region, 2000-2001

	Percent change in earnings by place of work ¹	Percentage points										
		Earnings by place of work ¹										
		Farms	Mining	Construction	Durable goods manufacturing	Nondurable goods manufacturing	Transportation and public utilities	Wholesale trade	Retail trade	Finance, insurance, and real estate	Services	Government
United States	3.5	-0.02	0.08	0.30	-0.43	-0.08	0.27	-0.22	0.34	0.62	1.66	0.88
New England												
Connecticut	3.5	-.04	.01	.34	-.43	-.15	.25	.06	-.17	1.13	1.23	1.25
Maine	5.1	-.02	0	.23	.07	-.33	.28	-.01	-.76	.59	2.36	.99
Massachusetts	2.9	0	.01	.60	-.63	.02	.18	-.69	.34	.67	1.64	.72
New Hampshire	4.1	.02	.01	1.08	-.62	-.26	.20	.08	.57	.41	1.83	.73
Rhode Island	4.2	-.01	.01	.11	-.11	-.03	.27	-.39	.19	.97	2.54	.62
Vermont	5.4	.12	.01	.36	.67	-.30	.26	.07	.54	.50	2.05	1.00
Mideast												
Delaware	5.3	-.10	^{1/2}	.11	-.12	.60	.21	.06	.35	2.45	1.57	.11
District of Columbia	6.1	---	^{1/2}	-.01	-.01	-.05	.08	-.12	.10	.38	3.80	1.82
Maryland	6.5	.07	.02	.61	.20	.02	.39	-.09	.37	.69	2.38	1.75
New Jersey	3.3	-.01	.01	.58	.12	-1.05	.32	-.25	.42	.27	2.31	.53
New York	3.6	.07	0	.24	-.07	.10	.21	-.27	.23	1.02	1.61	.40
Pennsylvania	3.7	.02	.03	.33	-.23	-.07	.25	-.12	.36	.50	1.94	.64
Great Lakes												
Illinois	3.0	-.15	.02	.26	-.31	.16	.20	-.32	.32	.64	1.49	.62
Indiana	1.3	.05	.04	.03	-1.20	-.21	.28	-.21	.24	.47	1.45	.35
Michigan6	-.01	.01	-.06	-1.24	-.30	.21	-.52	.26	.48	1.11	.66
Ohio	1.8	-.12	.03	-.07	-.83	-.15	.16	-.29	.21	.55	1.68	.60
Wisconsin	3.1	-.19	0	.15	-.65	.18	.29	-.12	.20	.46	1.42	.97
Plains												
Iowa	2.6	-.63	.01	.29	-.01	.15	.12	-.33	.26	.67	1.32	.76
Kansas	4.5	.38	.09	.07	.56	.04	.11	-.19	.30	.49	1.68	.89
Minnesota	3.3	-.64	-.04	.37	-.19	.23	.29	-.06	.44	.80	1.19	.93
Missouri	2.9	-.10	.02	.40	-.12	-.34	.17	-.14	.33	.38	1.63	.61
Nebraska	3.4	.15	.02	-.07	-.35	.19	.64	-.24	.16	.47	1.64	.72
North Dakota	1.7	-3.47	.23	-.17	.37	.10	.50	-.11	.42	.35	.92	2.50
South Dakota3	-3.57	-.01	.30	-1.05	.11	.34	.49	.28	.87	.34	2.18
Southeast												
Alabama	3.8	.59	0	.25	-.32	-.03	.28	-.15	.27	.37	1.69	.84
Arkansas	4.5	.81	.09	.24	-.37	.21	.69	-.11	.46	.22	1.34	.77
Florida	5.4	-.03	-.04	.48	.04	.02	.41	-.08	.73	.70	2.44	.65
Georgia	3.9	.16	0	.25	-.30	-.23	.48	-.36	.44	.60	1.86	.91
Kentucky	3.9	-.47	.19	.20	.32	-.04	.35	-.13	.21	.24	1.44	1.58
Louisiana	4.8	.03	.74	-.12	.26	.10	.69	-.02	.30	.21	1.79	.83
Mississippi	2.4	.85	.20	-.31	-.72	-.12	.25	-.21	.19	.22	1.00	.95
North Carolina	2.3	-.22	.01	.21	-.59	-.34	.24	-.10	.34	.43	1.53	.71
South Carolina	2.4	-.15	-.01	.13	-.13	-.41	.33	-.26	.24	.35	1.63	.61
Tennessee	2.9	-.10	0	-.11	-.65	.04	.24	-.30	.28	.43	2.16	.84
Virginia	5.2	-.11	.04	.44	.13	.05	.07	-.37	.30	.94	2.51	1.17
West Virginia	4.4	-.03	.72	.57	-.06	.13	.26	-.04	.23	.16	1.58	.86
Southwest												
Arizona	4.8	.22	.02	.53	-.14	-.16	.33	.03	.56	.99	.63	1.78
New Mexico	6.6	.82	.38	.60	-.16	.04	.32	-.08	.41	.26	1.42	2.61
Oklahoma	5.3	.08	.52	.81	-.32	-.08	.54	0	.33	.32	1.22	1.81
Texas	4.4	-.02	.44	.29	-.04	.10	.28	-.36	.44	.56	1.96	.73
Rocky Mountain												
Colorado	3.8	-.06	.40	.61	-.06	-.05	-.36	-.27	.48	.33	1.73	.98
Idaho	3.4	.32	-.05	.86	-2.18	0	.45	-.05	.49	.32	1.62	1.49
Montana	5.2	-.91	.42	.77	.07	.05	.33	-.08	.48	.33	1.41	2.18
Utah	4.5	.05	.09	.22	-.10	.08	.30	-.21	.34	.62	1.50	1.56
Wyoming	6.4	-.52	1.64	.53	.08	0	.29	.16	.44	.29	1.61	1.78
Far West												
Alaska	6.5	0	.97	.68	-.05	.20	.69	-.12	.35	.17	1.54	1.93
California	2.9	.04	.04	.48	-1.52	-.13	.36	-.14	.38	.78	1.38	1.18
Hawaii	3.9	.02	0	.18	.11	.06	.27	-.09	.35	.36	1.49	1.10
Nevada	6.3	-.04	-.06	.49	.42	.06	.64	-.14	.65	.56	2.27	1.15
Oregon	1.7	.08	0	-.18	-.99	-.02	-.02	-.54	.29	.45	1.54	.95
Washington	1.8	-.08	0	-.02	.14	-.19	.15	-.33	.02	.53	.20	1.29
BEA regions												
New England.....	3.4	-.01	.01	.51	-.47	-.08	.21	-.35	.25	.78	1.65	.88
Mideast.....	4.0	.04	.01	.35	-.04	-.16	.25	-.20	.30	.73	1.98	.67
Great Lakes.....	2.0	-.05	.02	.07	-.78	-.06	.21	-.32	.26	.54	1.44	.63
Plains.....	3.1	-.47	.02	.27	-.07	.02	.24	-.14	.34	.58	1.40	.88
Southeast.....	4.1	.02	.07	.25	-.17	-.07	.34	-.19	.41	.53	1.96	.86
Southwest.....	4.7	.06	.38	.39	-.09	.04	.31	-.26	.45	.59	1.67	1.07
Rocky Mountain.....	4.1	-.07	.34	.57	-.30	-.01	-.05	-.20	.45	.39	1.64	1.28
Far West.....	2.9	.02	.04	.37	-1.15	-.12	.33	-.17	.34	.70	1.29	1.19

1. Earnings by place of work is the sum of wage and salary disbursements (payrolls), other labor income, and proprietors' income. Also included agricultural services, forestry, and fishing.

2. Data are suppressed to avoid disclosure of confidential information.
Source: U.S. Bureau of Economic Analysis

Table 5.—Personal Income, by State and Region, 2000:IV-2001:IV

[Millions of dollars, seasonally adjusted at annual rates]

	2000	2001				Percent change from preceding quarter ¹				Percent change 2000:IV-2001:IV ²
	IV ^r	I ^r	II ^r	III ^r	IV ^p	2001:I	2001:II	2001:III	2001:IV	
United States	8,490,472	8,579,463	8,621,742	8,649,794	8,633,090	1.0	0.5	0.3	-0.2	1.7
New England										
Connecticut.....	141,829	144,048	144,055	143,571	142,779	1.6	0	-3	-6	.7
Maine.....	32,989	33,790	33,887	34,049	34,070	2.4	.3	.5	.1	3.3
Massachusetts.....	245,664	248,398	249,127	246,833	246,847	1.1	.3	-9	0	.5
New Hampshire.....	42,308	42,710	42,850	42,683	42,642	.9	.3	-4	-1	.8
Rhode Island.....	31,093	31,603	31,603	31,869	31,928	1.6	0	.8	.2	2.7
Vermont.....	16,767	17,020	17,185	17,238	17,203	1.5	1.0	.3	-2	2.6
Mideast										
Delaware.....	25,142	25,101	25,446	25,844	25,904	-2	1.4	1.6	.2	3.0
District of Columbia.....	22,816	22,904	23,218	23,233	23,276	.4	1.4	.1	.2	2.0
Maryland.....	182,690	185,568	187,252	188,947	189,681	1.6	.9	.9	.4	3.8
New Jersey.....	322,007	321,413	323,353	324,603	325,456	-2	.6	.4	.3	1.1
New York.....	677,704	683,343	683,922	681,923	679,635	.8	.1	-3	-3	.3
Pennsylvania.....	370,322	374,124	375,830	377,961	376,873	1.0	.5	.6	-3	1.8
Great Lakes										
Illinois.....	404,097	407,549	407,267	410,703	409,912	.9	-1	.8	-2	1.4
Indiana.....	165,414	167,576	167,835	169,338	168,647	1.3	.2	.9	-4	2.0
Michigan.....	292,567	293,363	294,349	296,447	296,273	.3	.3	.7	-1	1.3
Ohio.....	321,291	323,539	324,831	327,505	326,144	.7	.4	.8	-4	1.5
Wisconsin.....	154,166	155,504	155,865	156,955	156,378	.9	.2	.7	-4	1.4
Plains										
Iowa.....	78,341	79,224	79,462	80,207	80,119	1.1	.3	.9	-1	2.3
Kansas.....	74,771	76,466	76,444	77,515	76,841	2.3	0	1.4	-9	2.8
Minnesota.....	161,660	162,586	162,996	163,693	162,915	.6	.3	.4	-5	.8
Missouri.....	155,160	156,639	157,414	158,837	158,297	1.0	.5	.9	-3	2.0
Nebraska.....	47,611	48,492	48,750	49,427	49,080	1.8	.5	1.4	-7	3.1
North Dakota.....	15,885	15,943	16,068	16,448	16,351	.4	.8	2.4	-6	2.9
South Dakota.....	19,826	19,646	19,834	20,152	19,966	-9	1.0	1.6	-9	.7
Southeast										
Alabama.....	106,459	108,147	109,002	109,761	109,270	1.6	.8	.7	-4	2.6
Arkansas.....	59,225	61,094	61,470	62,198	61,964	3.2	.6	1.2	-4	4.6
Florida.....	456,681	461,099	466,243	470,406	471,008	1.0	1.1	.9	.1	3.1
Georgia.....	233,685	236,429	238,760	240,016	238,477	1.2	1.0	.5	-6	2.1
Kentucky.....	99,310	100,202	100,528	103,241	103,514	.9	.3	2.7	.3	4.2
Louisiana.....	104,127	106,268	107,243	108,123	108,549	2.1	.9	.8	.4	4.2
Mississippi.....	60,252	61,520	61,709	62,119	62,072	2.1	.3	.7	-1	3.0
North Carolina.....	221,694	224,640	225,030	224,297	223,829	1.3	.2	-3	-2	1.0
South Carolina.....	98,258	99,605	99,351	100,405	100,335	1.4	-3	1.1	-1	2.1
Tennessee.....	150,539	152,417	153,131	154,368	154,461	1.2	.5	.8	.1	2.6
Virginia.....	227,163	229,551	233,437	232,563	232,966	1.1	1.7	-4	.2	2.6
West Virginia.....	40,072	40,541	40,871	41,125	41,255	1.2	.8	.6	.3	3.0
Southwest										
Arizona.....	131,772	133,304	134,809	136,756	136,028	1.2	1.1	1.4	-5	3.2
New Mexico.....	40,809	41,622	42,160	42,846	42,836	2.0	1.3	1.6	0	5.0
Oklahoma.....	83,653	84,989	85,668	86,295	86,109	1.6	.8	.7	-2	2.9
Texas.....	594,623	607,451	608,736	608,018	605,661	2.2	.2	-1	-4	1.9
Rocky Mountain										
Colorado.....	144,415	145,626	146,103	145,766	144,875	.8	.3	-2	-6	.3
Idaho.....	31,500	31,682	32,057	32,176	32,261	.6	1.2	.4	.3	2.4
Montana.....	20,714	21,056	21,100	21,572	21,404	1.7	.2	2.2	-8	3.3
Utah.....	53,630	54,342	54,871	55,312	55,209	1.3	1.0	.8	-2	2.9
Wyoming.....	13,898	13,913	14,161	14,437	14,462	.1	1.8	2.0	.2	4.1
Far West										
Alaska.....	18,919	19,257	19,578	19,888	19,994	1.8	1.7	1.6	.5	5.7
California.....	1,118,297	1,128,863	1,130,806	1,125,730	1,124,304	.9	.2	-4	-1	.5
Hawaii.....	34,398	34,706	34,787	35,209	35,142	.9	.2	1.2	-2	2.2
Nevada.....	60,669	61,910	62,672	63,627	63,336	2.0	1.2	1.5	-5	4.4
Oregon.....	96,136	97,289	97,259	97,327	97,085	1.2	0	.1	-2	1.0
Washington.....	187,454	185,392	191,356	190,230	189,467	-1.1	3.2	-6	-4	1.1
BEA regions										
New England.....	510,649	517,568	518,707	516,243	515,469	1.4	.2	-5	-1	.9
Mideast.....	1,600,680	1,612,453	1,619,021	1,622,512	1,620,825	.7	.4	.2	-1	1.3
Great Lakes.....	1,337,536	1,347,531	1,350,146	1,360,948	1,357,354	.7	.2	.8	-3	1.5
Plains.....	553,255	558,997	560,968	566,279	563,568	1.0	.4	.9	-5	1.9
Southeast.....	1,857,465	1,881,513	1,896,775	1,908,623	1,907,702	1.3	.8	.6	0	2.7
Southwest.....	850,857	867,367	871,374	873,915	870,634	1.9	.5	.3	-4	2.3
Rocky Mountain.....	264,158	266,618	268,293	269,264	268,210	.9	.6	.4	-4	1.5
Far West.....	1,515,873	1,527,417	1,536,459	1,532,011	1,529,328	.8	.6	-3	-2	.9

^r Revised.

^p Preliminary.

1. Percent changes are expressed at quarterly rates.

2. Percent changes are expressed at annual rates.

Note: Estimates may not add to totals due to rounding.

Source: U.S. Bureau of Economic Analysis

Table 6.—Personal Income by Component, by State and Region, 2001:III-2001:IV

	Percent change				Percent change in personal income	Contribution to percent change in personal income (percentage points)			Dollar change (millions)			
	Personal income	Net earnings ¹	Dividends, interest, and rent	Transfer payments		Net earnings ¹	Dividends, interest, and rent	Transfer payments	Personal income	Net earnings ¹	Dividends, interest, and rent	Transfer payments
United States	-0.2	-0.4	-0.5	1.3	-0.2	-0.27	-0.10	0.17	-16,704	-23,050	-8,467	14,813
New England												
Connecticut	-6	-8	-7	1.1	-6	-56	-12	.12	-792	-797	-169	174
Maine1	-1	-5	1.2	.1	-05	-10	.21	21	-16	-33	70
Massachusetts	0	-2	-5	1.7	0	-11	-09	.20	14	-266	-223	504
New Hampshire	-1	-1	-12	1.6	-1	-04	-22	.17	-41	-19	-93	71
Rhode Island2	.1	-7	1.3	.2	.09	-12	.22	53	28	-38	69
Vermont	-2	-6	-5	1.8	-2	-37	-10	.26	-35	-65	-16	45
Mideast												
Delaware2	.3	-8	1.5	.2	.21	-16	.18	60	53	-40	47
District of Columbia2	.3	-10	1.3	.2	.23	-21	.16	43	54	-48	37
Maryland4	.4	-3	1.3	.4	.32	-06	.13	734	598	-114	250
New Jersey3	.3	-6	1.3	.3	.22	-10	.15	853	718	-337	471
New York	-3	-6	-6	1.2	-3	-43	-09	.19	-2,288	-2,929	-635	1,275
Pennsylvania	-3	-5	-8	1.1	-3	-34	-14	.19	-1,088	-1,276	-527	715
Great Lakes												
Illinois	-2	-3	-5	1.1	-2	-23	-09	.13	-791	-941	-372	522
Indiana	-4	-8	-4	1.2	-4	-51	-07	.17	-691	-870	-110	290
Michigan	-1	-1	-8	1.2	-1	-09	-14	.17	-174	-277	-407	509
Ohio	-4	-6	-7	.9	-4	-43	-13	.14	-1,361	-1,402	-410	451
Wisconsin	-4	-5	-8	.7	-4	-31	-16	.09	-577	-481	-244	148
Plains												
Iowa	-1	-2	-7	.9	-1	-10	-14	.13	-88	-81	-114	106
Kansas	-9	-13	-6	1.1	-9	-9	-12	.14	-674	-691	-90	107
Minnesota	-5	-7	-6	.9	-5	-46	-12	.10	-778	-749	-197	168
Missouri	-3	-6	-7	1.3	-3	-41	-13	.20	-540	-653	-202	315
Nebraska	-7	-11	-6	1.3	-7	-7	-13	.17	-347	-369	-64	86
North Dakota	-6	-11	-5	1.2	-6	-67	-11	.19	-97	-111	-17	32
South Dakota	-9	-15	-6	1.2	-9	-96	-13	.17	-186	-194	-27	35
Southeast												
Alabama	-4	-9	-6	1.3	-4	-57	-11	.23	-491	-628	-118	255
Arkansas	-4	-7	-6	1.2	-4	-48	-11	.22	-234	-296	-71	135
Florida1	0	-4	1.4	.1	0	-10	.22	602	18	-474	1,057
Georgia	-6	-10	-2	1.3	-6	-76	-04	.15	-1,539	-1,815	-87	364
Kentucky3	.2	-7	1.3	.3	.15	-12	.23	273	156	-124	241
Louisiana4	.6	-5	.7	.4	.36	-09	.12	426	394	-92	125
Mississippi	-1	-4	-4	1.3	-1	-27	-07	.26	-47	-165	-44	161
North Carolina	-2	-4	-8	1.6	-2	-29	-15	.23	-468	-641	-343	515
South Carolina	-1	-3	-6	1.6	-1	-22	-10	.25	-70	-224	-100	255
Tennessee1	0	-11	1.4	.1	0	-17	.23	93	5	-268	356
Virginia2	.1	-6	2.0	.2	.08	-10	.20	403	181	-233	455
West Virginia3	.5	-11	.8	.3	.32	-19	.19	130	130	-78	79
Southwest												
Arizona	-5	-10	-4	1.6	-5	-67	-07	.22	-728	-921	-101	294
New Mexico	0	-3	-5	1.7	0	-20	-09	.27	-10	-87	-39	116
Oklahoma	-2	-5	-3	1.2	-2	-34	-06	.18	-186	-294	-50	159
Texas	-4	-6	-8	1.5	-4	-45	-12	.18	-2,357	-2,740	-700	1,083
Rocky Mountain												
Colorado	-6	-9	-6	1.6	-6	-66	-10	.15	-891	-960	-145	213
Idaho3	.2	-4	1.5	.3	.13	-07	.21	85	41	-24	68
Montana	-8	-12	-9	.9	-8	-73	-20	.15	-168	-157	-44	32
Utah	-2	-4	-6	1.8	-2	-28	-10	.19	-103	-155	-55	106
Wyoming2	.2	-4	1.1	.2	.13	-09	.13	25	19	-13	19
Far West												
Alaska5	.7	-7	.9	.5	.49	-11	.15	106	98	-23	30
California	-1	-3	-1	1.1	-1	-24	-01	.13	-1,426	-2,757	-112	1,443
Hawaii	-2	-6	-3	2.1	-2	-39	-06	.26	-67	-139	-19	93
Nevada	-5	-7	-11	2.5	-5	-22	-27	.26	-291	-320	-139	167
Oregon	-2	-4	-9	1.5	-2	-27	-18	.21	-242	-265	-179	202
Washington	-4	-6	-8	1.2	-4	-42	-14	.15	-763	-793	-264	293
BEA regions												
New England.....	-1	-3	-6	1.4	-1	-22	-11	.18	-774	-1,134	-572	933
Mideast.....	-1	-3	-6	1.2	-1	-17	-10	.17	-1,687	-2,781	-1,702	2,796
Great Lakes.....	-3	-4	-6	1.1	-3	-29	-11	.14	-3,594	-3,971	-1,545	1,922
Plains.....	-5	-8	-6	1.1	-5	-50	-13	.15	-2,711	-2,847	-711	848
Southeast.....	0	-2	-6	1.4	0	-15	-11	.21	-921	-2,885	-2,032	3,997
Southwest.....	-4	-6	-7	1.5	-4	-46	-10	.19	-3,281	-4,043	-890	1,652
Rocky Mountain.....	-4	-6	-6	1.5	-4	-45	-10	.16	-1,054	-1,213	-280	439
Far West.....	-2	-4	-3	1.2	-2	-27	-05	.15	-2,683	-4,177	-734	2,228

1. Net earnings is earnings by place of work -- the sum of wage and salary disbursements (payrolls), other labor income, and proprietors' income -- less personal contributions for social insurance plus an adjustment to convert earnings by place of work to a place-of-residence basis.

Note: Estimates may not add to totals because of rounding.
Source: U.S. Bureau of Economic Analysis

Table 7.—Earnings by Major Industry, by State and Region, 2001:III-2001:IV

[Seasonally adjusted at quarterly rates]

	Percent change											
	Earnings by place of work ¹	Earnings by industry										
		Farms	Mining	Construction	Durable goods manufacturing	Nondurable goods manufacturing	Transportation and public utilities	Wholesale trade	Retail trade	Finance, insurance, and real estate	Services	Government
United States	-0.4	-17.0	2.2	0.2	-3.0	-1.5	-0.5	-1.9	0.5	-1.5	0.2	1.5
New England												
Connecticut	-8	-12.7	6.2	.2	-6.2	-3.2	-.2	-1.5	.1	-1.0	.2	2.2
Maine	-1	-8.9	-7.7	.6	-3.2	-3.3	.1	-2.0	.5	-.3	.3	1.8
Massachusetts	-2	1.0	7.2	2.6	-2.9	-.9	-1.9	-1.5	.2	-.8	.2	1.5
New Hampshire	0	2.2	2.5	2.9	-.8	-6.6	.3	-.8	.2	-1.4	.2	2.1
Rhode Island2	.5	-5.8	.1	-3.4	1.4	1.5	-1.3	.6	.7	.5	.7
Vermont	-6	-16.7	-2.4	1.4	-6.3	-.1	.6	-1.6	.1	.5	1.2	.7
Mideast												
Delaware4	-8.5	/2/	2.6	-2.2	2.2	-1.0	-.5	1.4	.2	.5	-.9
District of Columbia3	---	/2/	-3.5	-11.0	-.3	.8	.4	-1.4	-.1	.3	.5
Maryland5	-11.8	-6.6	-.4	-.2	-.6	1.0	-1.7	.7	-.5	-.2	2.9
New Jersey5	-6.3	6.4	1.3	-4.0	-.7	.4	-2.1	.8	2.5	.7	2.2
New York	-.7	-11.8	6.3	1.9	-3.7	-1.0	-1.1	-2.1	.5	-3.8	.3	3.2
Pennsylvania	-.6	-11.9	3.8	.2	-3.4	-1.9	-.8	-2.3	.9	-.7	-.4	1.5
Great Lakes												
Illinois	-.3	-37.8	3.2	-.9	-1.6	-.7	-.3	-2.3	.2	-.3	.1	1.4
Indiana	-.8	-12.2	3.9	.6	-1.7	-3.9	-1.2	-2.9	.2	-1.2	0	.7
Michigan	-.1	-25.1	5.4	1.8	-.8	-1.0	-.5	-.8	.7	-.8	-.3	1.2
Ohio	-.7	-13.4	1.4	.3	-4.3	-2.8	-.4	-1.7	.8	-.7	.3	1.5
Wisconsin	-.5	-5.8	.3	-.3	-3.9	-1.3	-.1	-1.6	.8	-.4	.3	1.6
Plains												
Iowa	-.1	-10.8	.8	.6	-2.6	1.9	.8	-2.0	.3	.2	.6	1.7
Kansas	-1.1	-74.9	1.8	1.2	-1.2	1.4	1.1	-2.5	1.0	-.3	.8	1.0
Minnesota	-.6	-47.9	1.2	-.1	-1.6	1.2	-3.1	-1.5	.2	-1.2	.4	1.0
Missouri	-.7	-9.8	3.9	-.7	-1.0	-4.9	-.2	-2.3	-.3	-1.3	-.1	.8
Nebraska	-1.0	-28.0	4.2	-1.5	-3.0	-3.7	2.5	-2.0	0	-.4	1.3	.7
North Dakota	-.9	-48.0	3.4	3.8	1.5	-6.8	.7	-1.5	1.1	-1.0	.5	.6
South Dakota	-1.4	-25.0	2.7	3.1	-5.1	5.0	1.3	.2	1.1	-1.2	.1	-.3
Southeast												
Alabama	-.9	-21.2	-.1	1.0	-4.6	-3.8	.5	-1.9	-.2	-.9	.3	1.8
Arkansas	-.7	-14.0	3.5	1.5	-3.9	-.9	1.6	-3.1	.5	-.9	-.1	2.0
Florida	0	31.2	.6	1.0	-2.2	-.5	-1.4	-2.2	.4	-1.5	.7	-1.0
Georgia	-1.1	-11.2	2.4	-2.8	-3.9	-4.5	-1.4	-2.9	.3	-.9	-.3	1.6
Kentucky3	-9.1	3.6	1.2	-2.1	-.3	-.3	-.6	1.0	.1	1.4	1.2
Louisiana6	-13.3	-.1	1.5	-1.0	1.1	.6	-1.0	.6	-1.2	.4	2.1
Mississippi	-.4	-11.0	0	1.7	-3.3	-.4	.4	-1.4	0	-.5	0	.8
North Carolina	-.4	-16.3	1.1	.5	-5.6	-.3	-.1	-1.1	.4	-.6	.1	2.7
South Carolina	-.3	-10.3	1.8	.5	-4.5	-1.6	.3	-.8	1.6	-1.1	1.0	-.1
Tennessee	0	-35.0	-.1	.9	-3.4	-.2	.3	-1.5	1.2	-1.1	.8	1.2
Virginia1	-.1	4.1	-1.1	-1.0	-1.1	-2.7	-1.9	.3	-.7	.4	1.6
West Virginia6	-12.2	2.7	.5	0	-2.4	-.4	-1.5	1.4	.2	-.1	2.2
Southwest												
Arizona	-1.0	-.1	-.4	-1.4	-1.6	0	-1.6	-2.0	1.5	-5.3	-.6	.4
New Mexico	-.3	-18.6	1.8	1.0	-6.9	-1.9	-.4	-1.6	.6	-.9	.2	1.8
Oklahoma	-.5	-49.4	3.3	2.2	-3.4	-2.5	.5	-2.1	1.3	-.6	.4	2.1
Texas	-.6	-47.2	3.5	-.1	-3.0	-2.1	-.5	-2.3	-.5	-2.2	.3	2.0
Rocky Mountain												
Colorado	-.9	-19.6	-12.5	.8	-1.4	-1.8	-1.1	-3.0	1.4	-2.3	-1.0	1.1
Idaho2	-3.9	.2	-.3	-1.3	-.9	1.0	-.8	-.2	-1.2	1.0	2.2
Montana	-1.1	-96.4	-.6	0	2.7	.4	.3	-2.0	-.1	-.9	.9	-.1
Utah	-.4	-4.0	1.0	1.6	-5.5	-4.4	-1.1	-2.6	.4	-1.7	.2	2.0
Wyoming2	21.3	2.1	-2.1	-4.2	-5.3	1.9	-2.7	1.5	-2.8	.8	-.3
Far West												
Alaska7	-12.3	-3.4	-.2	3.2	8.5	.3	-1.7	1.7	-.2	.4	1.4
California	-.3	-14.5	4.8	-.4	-3.9	-1.8	-.1	-1.3	.6	-1.0	.4	1.4
Hawaii	-.6	3.9	4.7	2.7	-2.4	-2.9	-6.9	-4.5	-1.5	-.8	-1.3	2.1
Nevada	-.7	4.1	-.9	.1	-1.0	-5.1	-1.3	-.9	.8	-4.3	-.7	.7
Oregon	-.4	3.0	1.5	-3.6	-2.8	-2.6	-.2	-2.1	.7	-.9	.5	1.0
Washington	-.6	4.3	-1.5	-3.6	-3.6	-1.7	-1.8	-2.8	0	-.4	-.2	1.8
BEA regions												
New England.....	-.3	-9.9	5.0	1.7	-3.9	-2.0	-.8	-1.5	.2	-.8	.3	1.6
Mideast.....	-.2	-11.2	3.8	1.0	-3.4	-1.0	-.4	-2.1	.7	-2.3	.2	2.3
Great Lakes.....	-.4	-20.1	3.1	.2	-2.2	-1.8	-.5	-1.8	.5	-.6	.1	1.4
Plains.....	-.7	-32.1	2.4	.1	-1.7	-.8	-.2	-1.9	.2	-.9	.4	.9
Southeast.....	-.2	-6.1	1.5	.2	-3.3	-1.4	-.7	-1.9	.5	-1.0	.4	1.1
Southwest.....	-.6	-38.0	3.4	-.1	-2.9	-2.0	-.6	-2.2	0	-2.7	.2	1.7
Rocky Mountain.....	-.6	-16.2	-5.0	.6	-2.3	-2.3	-.7	-2.6	.9	-2.1	-.4	1.2
Far West.....	-.4	-10.8	2.0	-.9	-3.7	-1.8	-.6	-1.6	.5	-1.0	.3	1.4

1. Earnings by place of work is the sum of wage and salary disbursements (payrolls), other labor income, and proprietors' income. Also included agricultural services, forestry, and fishing.

2. Data are suppressed to avoid disclosure of confidential information.
Source: U.S. Bureau of Economic Analysis