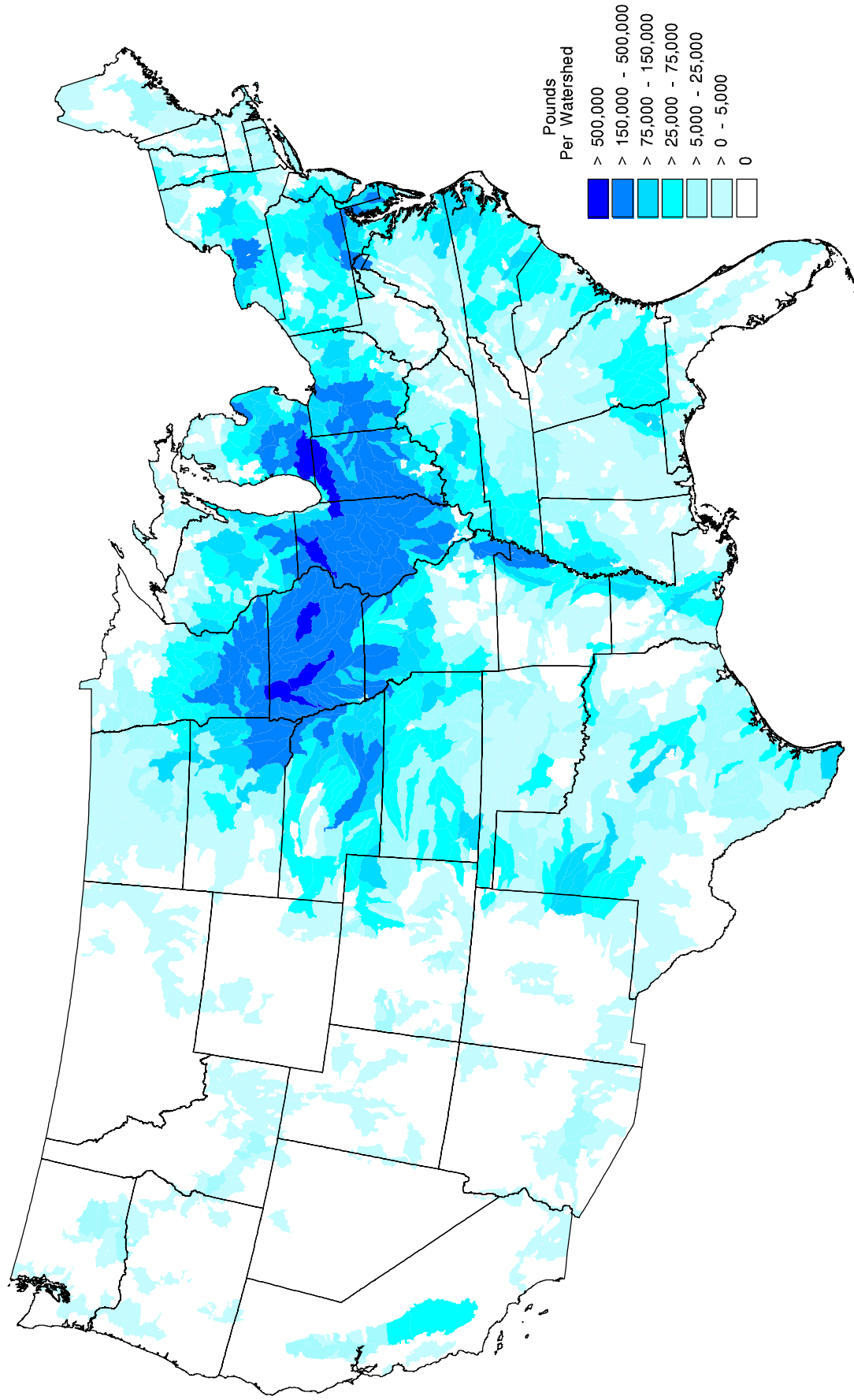


Figure 6.

# Pounds of Metolachlor Applied to Cultivated Cropland\*



\*Based on metolachlor use on corn, cotton, peanuts, potatoes, sorghum, and soybeans



U.S. Department of Agriculture  
Natural Resources Conservation Service  
Resource Assessment and Strategic Planning Division  
Map ID: SMW.2250 October 1997