

Table XVIII-1

MYELOMA

TRENDS IN SEER INCIDENCE^a AND U.S. MORTALITY^b USING THE JOINPOINT REGRESSION PROGRAM, 1975-2004
WITH UP TO THREE JOINPOINTS BY RACE AND SEX

		<u>Joinpoint Segment 1</u>		<u>Joinpoint Segment 2</u>		<u>Joinpoint Segment 3</u>		<u>Joinpoint Segment 4</u>	
		<u>Year</u>	<u>APC</u>	<u>Year</u>	<u>APC</u>	<u>Year</u>	<u>APC</u>	<u>Year</u>	<u>APC</u>
<u>SEER Cancer Incidence^a</u>									
All Races	Male and Female	1975-1997	1.0*	1997-2004	-1.2				
All Races	Male	1975-1991	1.3*	1991-2004	-0.1				
All Races	Female	1975-1997	0.9*	1997-2004	-1.9*				
White	Male and Female	1975-2000	0.8*	2000-2004	-2.8				
White	Male	1975-2002	0.9*	2002-2004	-7.5				
White	Female	1975-1997	0.8*	1997-2004	-1.7				
Black	Male and Female	1975-1994	1.4*	1994-2004	-1.6*				
Black	Male	1975-2004	0.3						
Black	Female	1975-1997	1.6*	1997-2004	-4.0*				
<u>SEER Delay-Adjusted Incidence^a</u>									
All Races	Male and Female	1975-2004	0.7*						
All Races	Male	1975-2004	0.8*						
All Races	Female	1975-2004	0.6*						
White	Male and Female	1975-2004	0.8*						
White	Male	1975-2004	0.9*						
White	Female	1975-2004	0.5*						
Black	Male and Female	1975-2004	0.6*						
Black	Male	1975-2004	0.5*						
Black	Female	1975-1997	1.6*	1997-2004	-2.8				
<u>U.S. Cancer Mortality^b</u>									
All Races	Male and Female	1975-1993	1.5*	1993-2002	-0.5*	2002-2004	-3.0*		
All Races	Male	1975-1994	1.5*	1994-2004	-1.1*				
All Races	Female	1975-1993	1.5*	1993-2001	-0.4	2001-2004	-2.4*		
White	Male and Female	1975-1994	1.4*	1994-1998	-1.1	1998-2002	0.2	2002-2004	-3.5*
White	Male	1975-1994	1.5*	1994-2004	-0.8*				
White	Female	1975-1993	1.4*	1993-2002	-0.5*	2002-2004	-3.2		
Black	Male and Female	1975-1982	3.4*	1982-1995	1.3*	1995-2004	-1.4*		
Black	Male	1975-1982	3.8*	1982-1995	1.1*	1995-2004	-1.9*		
Black	Female	1975-1995	2.0*	1995-2004	-1.3*				

Joinpoint Regression Program Version 3.0, April 2005, National Cancer Institute. (<http://srab.cancer.gov/joinpoint/>).

The APC is the Annual Percent Change based on rates age-adjusted to the 2000 US Std Population (19 age groups - Census P25-1130).

^a Trends are from the SEER 9 areas (San Francisco, Connecticut, Detroit, Hawaii, Iowa, New Mexico, Seattle, Utah, and Atlanta).

^b Trends are from the NCHS public use data file for the total US.

* The APC is significantly different from zero (p<.05).

Table XVIII-2

MYELOMAAGE ADJUSTED SEER INCIDENCE^a RATES BY YEAR, RACE AND SEX

	<u>All Races</u>			<u>Whites</u>			<u>Blacks</u>		
	<u>Total</u>	<u>Males</u>	<u>Females</u>	<u>Total</u>	<u>Males</u>	<u>Females</u>	<u>Total</u>	<u>Males</u>	<u>Females</u>
<u>AGE-ADJUSTED RATES</u>									
<u>YEAR OF DIAGNOSIS:</u>									
1975	4.9	6.4	3.9	4.6	6.2	3.6	9.7	10.9	8.6
1976	5.0	6.1	4.4	4.8	5.8	4.1	9.2	11.2	7.9
1977	5.1	6.4	4.2	4.8	6.2	3.9	9.1	11.0	7.7
1978	4.7	5.9	3.9	4.4	5.6	3.7	9.6	11.0	8.7
1979	4.9	6.0	4.1	4.5	5.4	3.8	11.0	15.3	8.2
1980	4.8	5.8	4.1	4.4	5.5	3.7	9.9	10.8	9.0
1981	5.0	6.0	4.3	4.6	5.5	4.0	11.0	15.2	8.2
1982	5.3	6.3	4.7	4.9	5.9	4.3	11.6	13.9	9.7
1983	5.3	6.9	4.2	4.7	6.3	3.7	13.7	16.2	11.9
1984	5.4	7.0	4.3	5.0	6.4	4.1	10.8	15.3	7.7
1985	5.2	6.3	4.3	4.9	5.9	4.2	9.3	12.6	7.0
1986	5.3	6.3	4.7	4.9	6.0	4.1	11.1	11.6	10.5
1987	5.9	7.4	5.0	5.7	7.2	4.7	11.1	13.5	9.7
1988	5.3	6.6	4.5	5.0	6.4	4.2	10.8	12.2	9.7
1989	5.4	6.7	4.5	5.1	6.4	4.2	10.7	13.5	9.0
1990	5.6	7.2	4.6	5.2	6.9	4.1	11.9	14.6	10.2
1991	6.0	7.7	4.8	5.6	7.2	4.4	12.8	15.9	10.6
1992	5.9	7.3	5.1	5.6	7.0	4.7	11.5	13.0	10.4
1993	5.6	7.3	4.3	5.1	6.8	3.9	12.7	15.6	10.6
1994	5.7	6.8	5.0	5.2	6.3	4.4	12.8	15.2	11.8
1995	5.7	7.2	4.7	5.3	6.8	4.3	12.0	15.0	10.1
1996	5.8	7.1	4.7	5.4	6.8	4.3	12.6	13.4	11.9
1997	6.1	7.3	5.2	5.7	7.0	4.7	12.6	14.2	11.9
1998	5.9	7.2	4.8	5.5	7.0	4.4	11.5	13.0	10.5
1999	5.6	7.0	4.5	5.1	6.6	4.1	11.9	14.9	9.9
2000	5.9	7.4	4.9	5.7	7.4	4.4	10.6	10.5	10.5
2001	5.8	7.1	4.8	5.4	6.8	4.4	11.6	13.9	10.2
2002	5.8	7.6	4.4	5.5	7.3	4.1	10.7	14.0	8.6
2003	5.5	7.0	4.5	5.3	6.8	4.2	10.3	13.4	8.2
2004	5.3	6.7	4.3	4.8	6.2	3.9	11.3	14.1	9.3
1975-2004	5.5	6.9	4.5	5.1	6.5	4.2	11.3	13.6	9.7

^a SEER 9 areas (San Francisco, Connecticut, Detroit, Hawaii, Iowa, New Mexico, Seattle, Utah, and Atlanta). Rates are per 100,000 and are age-adjusted to the 2000 US Std Population (19 age groups - Census P25-1130).

- Statistic not shown. Rate based on less than 16 cases for the time interval.

Table XVIII-3

MYELOMAAGE-ADJUSTED U.S. DEATH^a RATES BY YEAR, RACE AND SEX

	<u>All Races</u>			<u>Whites</u>			<u>Blacks</u>		
	<u>Total</u>	<u>Males</u>	<u>Females</u>	<u>Total</u>	<u>Males</u>	<u>Females</u>	<u>Total</u>	<u>Males</u>	<u>Females</u>
<u>AGE-ADJUSTED RATES</u>									
<u>YEAR OF DEATH:</u>									
1975	2.9	3.7	2.4	2.7	3.5	2.2	5.3	6.4	4.4
1976	3.1	3.9	2.6	2.9	3.6	2.4	5.6	6.9	4.6
1977	3.1	3.9	2.6	2.9	3.6	2.4	5.6	7.2	4.4
1978	3.2	3.9	2.7	2.9	3.7	2.5	5.7	7.0	4.9
1979	3.3	4.1	2.7	3.0	3.9	2.5	5.9	7.4	4.9
1980	3.3	4.1	2.7	3.0	3.8	2.5	6.1	7.4	5.2
1981	3.3	4.1	2.8	3.0	3.7	2.5	6.6	8.2	5.5
1982	3.4	4.2	2.9	3.1	3.8	2.6	6.7	8.6	5.4
1983	3.4	4.3	2.9	3.1	4.0	2.6	6.8	8.7	5.6
1984	3.5	4.3	3.0	3.2	3.9	2.7	6.6	8.4	5.5
1985	3.6	4.5	3.0	3.3	4.1	2.8	6.9	8.6	5.8
1986	3.6	4.5	3.0	3.3	4.1	2.8	7.2	9.1	6.0
1987	3.6	4.6	3.0	3.3	4.2	2.7	7.1	9.2	5.7
1988	3.6	4.6	3.0	3.4	4.3	2.7	6.9	8.1	6.1
1989	3.7	4.6	3.1	3.4	4.3	2.8	7.1	8.9	5.9
1990	3.8	4.8	3.1	3.5	4.4	2.9	7.3	9.6	5.9
1991	3.9	4.8	3.3	3.5	4.5	2.9	7.8	9.6	6.6
1992	3.8	4.7	3.2	3.5	4.4	2.9	7.5	9.3	6.3
1993	4.0	4.9	3.4	3.6	4.6	3.0	7.8	9.3	6.9
1994	4.0	5.0	3.3	3.7	4.7	3.0	7.7	9.7	6.5
1995	4.0	4.9	3.4	3.7	4.6	3.0	7.8	9.4	6.9
1996	3.9	4.9	3.2	3.6	4.6	2.9	7.7	9.6	6.5
1997	3.9	4.9	3.2	3.6	4.6	2.9	7.5	9.2	6.5
1998	3.8	4.8	3.2	3.5	4.4	2.9	7.7	9.5	6.8
1999	3.8	4.7	3.2	3.5	4.4	2.9	7.5	8.8	6.6
2000	3.8	4.7	3.3	3.5	4.4	3.0	7.5	8.8	6.7
2001	3.8	4.7	3.2	3.5	4.4	2.9	7.2	8.7	6.3
2002	3.8	4.8	3.1	3.6	4.5	2.9	6.9	8.3	6.0
2003	3.7	4.6	3.1	3.4	4.3	2.8	7.1	8.4	6.3
2004	3.6	4.4	3.0	3.3	4.1	2.7	6.8	8.2	6.0
1975-2004	3.6	4.6	3.0	3.4	4.2	2.8	7.0	8.6	6.0

^a NCHS public use data file for the total US. Rates are per 100,000 and are age-adjusted to the 2000 US Std Population (19 age groups - Census P25-1130).

- Statistic not shown. Rate based on less than 16 cases for the time interval.

Table XVIII-4
MYELOMASEER INCIDENCE^a AND U.S. DEATH^b RATES, AGE-ADJUSTED AND AGE-SPECIFIC RATES, BY RACE AND SEX

	All Races			Whites			Blacks		
	Total	Males	Females	Total	Males	Females	Total	Males	Females
<u>SEER INCIDENCE</u>									
<u>AGE AT DIAGNOSIS</u>									
AGE-ADJUSTED RATES, 2000-2004									
All ages	5.6	7.0	4.5	5.2	6.6	4.1	11.3	14.0	9.5
Under 65	2.1	2.5	1.7	1.9	2.3	1.5	4.4	5.1	3.9
65 and over	29.7	38.0	24.0	27.8	36.1	22.2	58.6	75.7	48.3
All ages(IARC world std) ^c	3.5	4.3	2.9	3.2	4.0	2.5	7.2	8.8	6.1
AGE-SPECIFIC RATES, 2000-2004									
<1	-	-	-	-	-	-	-	-	-
1-4	-	-	-	-	-	-	-	-	-
5-9	-	-	-	-	-	-	-	-	-
10-14	-	-	-	-	-	-	-	-	-
15-19	-	-	-	-	-	-	-	-	-
20-24	-	-	-	-	-	-	-	-	-
25-29	0.1	-	-	-	-	-	-	-	-
30-34	0.3	0.5	0.1	0.3	0.5	-	0.6	-	-
35-39	0.7	0.9	0.6	0.6	0.7	0.5	2.0	2.2	1.7
40-44	1.5	1.7	1.3	1.4	1.6	1.1	2.8	2.8	2.8
45-49	3.1	3.5	2.6	2.7	3.3	2.2	6.7	7.2	6.3
50-54	5.9	6.9	5.0	5.1	6.1	4.2	14.4	16.6	12.5
55-59	9.8	11.4	8.2	9.0	10.6	7.4	19.1	22.7	16.2
60-64	14.1	17.2	11.3	12.8	16.2	9.8	28.9	33.8	25.1
65-69	21.4	26.4	17.0	19.5	24.1	15.5	45.0	57.5	35.5
70-74	28.1	35.6	22.2	26.2	33.8	20.1	55.7	70.4	45.5
75-79	35.0	43.5	29.0	33.4	42.2	27.1	63.8	76.3	56.1
80-84	37.4	48.4	30.6	35.4	46.2	28.7	75.8	105.0	60.0
85+	33.1	47.1	26.8	31.2	45.4	24.8	65.4	91.7	54.8
<u>U.S. MORTALITY</u>									
<u>AGE AT DEATH</u>									
AGE-ADJUSTED RATES, 2000-2004									
All ages	3.7	4.6	3.1	3.5	4.4	2.8	7.1	8.5	6.3
Under 65	0.9	1.1	0.8	0.8	1.0	0.6	2.1	2.4	1.8
65 and over	23.2	28.9	19.4	21.8	27.7	18.0	42.0	50.3	37.3
All ages(IARC world std) ^c	2.1	2.6	1.8	1.9	2.4	1.6	4.2	4.9	3.6
AGE-SPECIFIC RATES, 2000-2004									
<1	-	-	-	-	-	-	-	-	-
1-4	-	-	-	-	-	-	-	-	-
5-9	-	-	-	-	-	-	-	-	-
10-14	-	-	-	-	-	-	-	-	-
15-19	-	-	-	-	-	-	-	-	-
20-24	-	-	-	-	-	-	-	-	-
25-29	-	-	-	-	-	-	-	-	-
30-34	0.0	0.1	-	0.0	0.1	-	-	-	-
35-39	0.1	0.2	0.1	0.1	0.1	0.1	0.4	0.4	0.4
40-44	0.5	0.6	0.4	0.4	0.5	0.3	1.1	1.2	1.1
45-49	1.1	1.3	0.9	0.9	1.1	0.7	2.6	3.0	2.3
50-54	2.4	2.8	1.9	2.0	2.4	1.6	5.4	6.2	4.6
55-59	4.5	5.3	3.9	3.9	4.6	3.3	10.6	12.4	9.1
60-64	7.9	9.5	6.5	7.2	8.7	5.8	16.2	19.6	13.6
65-69	13.2	15.9	10.9	12.2	14.8	9.8	25.4	29.7	22.3
70-74	19.6	23.5	16.5	18.2	22.2	15.0	37.4	43.8	33.1
75-79	27.1	33.5	22.5	25.6	32.2	20.9	48.6	57.1	43.5
80-84	33.4	41.9	28.2	32.0	40.6	26.8	57.7	72.3	50.2
85+	33.8	45.7	28.7	32.3	44.6	27.0	58.6	71.6	53.5

^a SEER 17 areas. Rates are per 100,000 and are age-adjusted to the 2000 US Std Population (19 age groups - Census P25-1130), unless noted.

^b NCHS public use data file for the total US. Rates are per 100,000 and are age-adjusted to the 2000 US Std Population (19 age groups - Census P25-1130), unless noted.

^c Rates are per 100,000 and are age-adjusted to the IARC world standard population.

- Statistic not shown. Rate based on less than 16 cases for the time interval.

Table XVIII-5
MYELOMA

SURVIVAL RATES, BY RACE, SEX, DIAGNOSIS YEAR AND AGE

	All Races			Whites			Blacks		
	Total	Males	Females	Total	Males	Females	Total	Males	Females
<u>5-YR RELATIVE SURVIVAL RATES</u>									
YEAR OF DIAGNOSIS:									
1960-1963 ^a	-	-	-	12	13	10	-	-	-
1970-1973 ^a	-	-	-	19	20	17	-	-	-
1975-1977 ^b	25.9	25.5	26.3	25.4	25.1	25.8	30.7	31.6	29.7
1978-1980 ^b	27.0	25.6	28.5	26.1	25.6	26.6	32.5	26.9	37.9
1981-1983 ^b	28.7	26.8	30.7	28.5	26.7	30.3	29.6	30.3	28.8
1984-1986 ^b	28.5	29.0	27.9	27.4	27.3	27.4	32.1	33.4	30.6
1987-1989 ^b	28.5	30.1	26.8	28.2	30.5	25.8	30.8	30.3	31.3
1990-1992 ^b	30.4	31.6	29.1	29.6	30.7	28.3	35.5	39.7	31.5
1993-1995 ^b	32.6	33.3	31.8	31.6	32.7	30.4	35.3	34.0	36.0
1996-2003 ^b	33.6 ^e	35.7 ^e	31.2 ^e	33.6 ^e	35.8 ^e	31.0 ^e	32.2	34.9	30.0
<u>5-YR PERIOD SURVIVAL RATES^{cd}</u>									
YEAR OF DIAGNOSIS:									
1996-2003	33.6	35.1	31.7	33.0	34.9	30.8	33.7	34.4	32.9
<u>5-YR RELATIVE SURVIVAL RATES, 1996-2003^c</u>									
AGE AT DIAGNOSIS:									
<45	55.3	56.4	53.3	56.4	58.3	52.7	49.9	49.5 ^f	50.5 ^f
45-54	50.5	51.0	49.8	51.7	53.1	49.3	44.3	41.2	47.3
55-64	39.4	40.5	37.8	40.7	41.5	39.5	35.0	38.0	31.6
65-74	31.6	31.9	31.4	31.5	31.1	32.0	31.2	33.1	29.2
75+	18.3	17.8	18.7	17.9	17.2	18.5	17.7	14.9	18.4
Under 65	45.3	46.4	43.7	46.4	47.8	44.1	40.5	40.8	40.1
65 and over	25.3	26.0	24.6	24.9	25.1	24.6	25.6	27.6	24.2

^a Rates are based on End Results data from a series of hospital registries and one population-based registry.

^b Rates are from the SEER 9 areas (San Francisco, Connecticut, Detroit, Hawaii, Iowa, New Mexico, Seattle, Utah, Atlanta).

Rates are based on follow-up of patients into 2004.

^c Rates are from the SEER 17 areas (San Francisco, Connecticut, Detroit, Hawaii, Iowa, New Mexico, Seattle, Utah, Atlanta, San Jose-Monterey, Los Angeles, Alaska Native Registry, Rural Georgia, California excluding SF/SJM/LA, Kentucky, Louisiana and New Jersey). California excluding SF/SJM/LA, Kentucky, Louisiana, and New Jersey contribute cases for diagnosis years 2000-2003. The remaining 13 SEER Areas contribute cases for the entire period 1996-2003. Rates are based on follow-up of patients into 2004.

^d Period survival provides a more up-to-date estimate of survival by piecing together the most recent conditional survival estimates from several cohorts. It is computed here using three calendar year blocks (2001-2003: 0-1 year survival), (2000-2002: 1-2 year survival), (1999-2001: 2-3 year survival), (1998-2000: 3-4 year survival), (1997-1999: 4-5 years survival).

^e The difference in rates between 1975-1977 and 1996-2003 is statistically significant ($p < .05$).

^f The standard error of the survival rate is between 5 and 10 percentage points.

^g The standard error of the survival rate is greater than 10 percentage points.

- Statistic could not be calculated due to fewer than 16 cases during the time period.

Table XVIII-6

MYELOMASURVIVAL RATES^a

By Year of Diagnosis

All Races, Males and Females

Year of Diagnosis

	1975- 1979	1980- 1984	1985	1986	1987	1988	1989	1990	1991	1992	1993	1994	1995	1996	1997	1998	1999	2000	2001	2002	2003
Relative Survival Rates (SEER ^b)																					
1-year	69.0	70.9	72.3	72.1	75.5	74.0	71.9	71.5	75.8	69.6	73.2	73.6	74.8	70.9	74.6	75.0	74.2	72.9	72.9	74.2	76.6
2-year	53.0	55.6	59.0	57.1	59.5	60.2	58.3	56.9	60.6	56.9	59.4	59.4	59.3	58.2	61.2	62.4	60.5	60.3	59.6	62.4	
3-year	40.9	44.1	47.1	44.8	48.3	47.4	44.7	44.7	48.8	46.2	47.3	48.7	48.3	45.7	49.1	51.6	48.7	50.0	49.4		
4-year	32.5	35.5	36.8	35.6	37.9	38.9	36.0	38.8	39.2	35.6	38.5	38.0	40.9	38.2	39.3	39.9	39.5	41.5			
5-year	26.4	28.1	27.9	30.0	28.5	29.9	27.0	31.3	32.1	28.0	31.8	31.8	34.1	31.8	32.3	34.3	32.0				
6-year	21.1	22.3	22.8	24.1	23.4	24.6	21.9	25.3	25.9	21.8	27.7	26.9	28.6	27.3	26.7	29.9					
7-year	17.3	17.9	19.4	19.5	19.5	18.6	17.3	19.9	22.2	19.4	23.2	21.6	24.0	24.2	22.9						
8-year	14.6	14.5	17.2	17.9	16.7	15.7	13.8	18.0	18.6	16.5	18.9	18.9	20.7	21.9							
9-year	12.5	12.4	13.5	13.4	14.4	12.7	11.7	16.4	17.3	14.6	17.0	16.2	18.7								
10-year	11.1	10.7	12.0	12.8	13.5	10.3	10.3	14.7	15.8	12.6	15.6	14.6									
11-year	9.8	9.9	10.5	11.2	11.7	9.8	9.3	13.4	14.2	11.6	14.8										
12-year	8.9	8.8	10.2	10.6	9.6	9.6	8.6	12.6	12.6	10.1											
13-year	7.7	7.9	8.8	10.3	9.0	8.9	7.9	11.9	12.2												
14-year	7.1	7.2	8.5	9.2	9.0	7.6	7.6	10.9													
15-year	6.3	7.0	7.1	8.2	8.0	7.6	7.6														
16-year	5.8	6.4	6.8	7.2	7.7	6.4															
17-year	5.6	6.0	6.6	7.0	7.7																
18-year	5.0	5.7	6.6	6.6																	
19-year	4.7	5.0	6.3																		
20-year	4.2	4.8																			

^a Survival rates are relative rates expressed as percents.^b Rates are from the SEER 9 areas (San Francisco, Connecticut, Detroit, Hawaii, Iowa, New Mexico, Seattle, Utah, and Atlanta).

Table XVIII-7

MYELOMASURVIVAL RATES^a

By Year of Diagnosis

All Races, Males

Year of Diagnosis

	1975- 1979	1980- 1984	1985	1986	1987	1988	1989	1990	1991	1992	1993	1994	1995	1996	1997	1998	1999	2000	2001	2002	2003
Relative Survival Rates (SEER ^b)																					
1-year	68.9	71.1	73.8	71.1	77.1	75.2	72.6	71.2	77.0	73.4	70.9	74.8	75.5	71.7	74.4	76.0	76.0	74.3	73.9	75.0	76.4
2-year	53.4	56.1	59.0	56.6	61.9	62.5	61.6	57.3	62.5	60.5	58.4	60.4	60.2	59.5	61.5	63.5	62.1	62.2	61.1	61.5	
3-year	40.4	44.1	45.9	43.7	48.5	50.2	47.7	45.5	49.9	49.5	45.7	48.2	50.0	45.7	51.1	54.1	52.1	52.4	50.2		
4-year	32.1	35.1	35.6	35.1	38.3	41.5	39.5	38.0	40.5	37.1	36.9	38.2	42.3	39.6	41.5	43.8	44.1	43.8			
5-year	25.7	27.0	27.5	30.0	30.9	31.9	27.7	31.3	33.9	29.5	30.8	31.7	37.2	33.7	33.1	38.4	36.1				
6-year	20.4	22.0	22.9	24.4	26.3	27.0	23.3	23.7	28.1	22.7	27.9	29.3	32.3	29.8	27.2	34.2					
7-year	16.7	18.1	20.4	19.6	21.7	21.5	19.7	19.2	23.8	20.0	23.2	24.6	26.7	26.2	23.0						
8-year	14.2	14.8	17.4	18.8	18.5	17.6	15.6	18.3	20.9	18.1	18.6	21.6	22.9	24.6							
9-year	12.2	12.9	12.9	14.7	16.3	14.8	12.5	16.7	19.4	16.6	17.2	18.4	20.9								
10-year	10.6	10.9	11.1	14.6	14.6	12.0	11.4	15.2	17.6	14.1	16.2	16.3									
11-year	8.7	10.0	9.1	12.8	12.6	11.6	10.3	12.8	15.8	13.7	14.9										
12-year	8.1	8.7	8.7	12.0	12.0	11.1	9.8	12.8	14.0	12.4											
13-year	6.9	7.9	8.0	12.0	11.4	10.0	8.7	12.2	13.8												
14-year	6.3	7.0	7.5	11.2	11.4	8.4	8.7	11.0													
15-year	5.7	6.7	6.0	11.0	9.6	8.0	8.7														
16-year	5.4	6.2	5.4	11.0	9.6	6.7															
17-year	5.0	5.8	5.4	10.7	9.6																
18-year	4.4	5.4	5.4	10.7																	
19-year	4.2	5.1	5.4																		
20-year	3.3	4.8																			

^a Survival rates are relative rates expressed as percents.^b Rates are from the SEER 9 areas (San Francisco, Connecticut, Detroit, Hawaii, Iowa, New Mexico, Seattle, Utah, and Atlanta).

Table XVIII-8

MYELOMASURVIVAL RATES^a

By Year of Diagnosis

All Races, Females

Year of Diagnosis

	1975- 1979	1980- 1984	1985	1986	1987	1988	1989	1990	1991	1992	1993	1994	1995	1996	1997	1998	1999	2000	2001	2002	2003
Relative Survival Rates (SEER ^b)																					
1-year	69.1	70.8	70.7	73.1	73.9	72.7	71.1	72.0	74.5	65.6	76.0	72.4	74.1	70.0	74.8	73.9	72.1	71.2	71.7	73.1	76.8
2-year	52.7	55.2	59.1	57.7	57.3	57.7	54.7	56.5	58.3	53.3	60.6	58.5	58.3	56.8	60.8	61.2	58.7	58.1	58.0	63.6	
3-year	41.5	44.1	48.2	46.0	48.1	44.6	41.4	43.8	47.6	42.9	49.3	49.2	46.4	45.6	47.2	48.9	44.9	47.2	48.4		
4-year	32.9	35.9	38.1	36.0	37.4	36.2	32.3	39.6	37.7	34.1	40.5	37.8	39.3	36.7	37.0	35.6	34.2	38.9			
5-year	27.0	29.3	28.4	30.0	26.3	27.9	26.2	31.3	29.9	26.5	33.0	31.8	30.5	29.9	31.5	29.6	27.4				
6-year	21.8	22.5	22.7	23.7	20.7	22.2	20.4	27.2	23.3	20.9	27.4	24.6	24.6	24.7	26.3	25.1					
7-year	17.9	17.8	18.3	19.4	17.6	15.7	14.6	20.6	20.4	18.8	23.1	18.8	20.9	22.0	22.7						
8-year	14.9	14.1	17.0	17.0	14.9	13.6	11.8	17.7	15.9	14.8	19.2	16.2	18.4	19.1							
9-year	12.7	12.0	14.1	12.3	12.7	10.7	10.9	16.0	14.9	12.5	16.8	14.1	16.2								
10-year	11.6	10.5	12.6	11.2	12.5	8.6	9.1	14.1	13.7	11.2	14.7	13.0									
11-year	10.8	9.7	12.0	9.8	10.8	7.7	8.0	13.9	12.3	9.3	14.5										
12-year	9.7	8.9	11.1	9.1	7.5	7.7	7.4	12.4	10.7	7.6											
13-year	8.4	7.9	9.5	8.5	6.9	7.7	7.2	11.6	9.9												
14-year	7.8	7.3	9.3	7.4	6.9	6.9	6.2	10.6													
15-year	6.9	7.2	8.0	5.1	6.5	6.9	5.9														
16-year	6.2	6.6	8.0	3.8	5.6	6.0															
17-year	6.1	6.2	7.4	3.6	5.6																
18-year	5.5	5.9	7.4	2.7																	
19-year	5.2	4.9	6.5																		
20-year	4.8	4.6																			

^a Survival rates are relative rates expressed as percents.^b Rates are from the SEER 9 areas (San Francisco, Connecticut, Detroit, Hawaii, Iowa, New Mexico, Seattle, Utah, and Atlanta).

Table XVIII-9

MYELOMA

Risk of Being Diagnosed With Cancer in 10, 20 and 30 Years, Lifetime Risk of Being Diagnosed with Cancer, and
Lifetime Risk of Dying from Cancer Given Cancer Free At Current Age
Both Sexes, 2002-2004 By Race/Ethnicity

Race/ Ethnicity	Current Age	Risk of Being Diagnosed with Cancer			Risk of Dying from Cancer	
		+10 yrs Percent (95% C.I.)	+20 yrs Percent (95% C.I.)	+30 yrs Percent (95% C.I.)	Eventually Percent (95% C.I.)	Eventually Percent (95% C.I.)
All Races	0	0.00 (0.00, 0.00)	0.00 (0.00, 0.00)	0.00 (0.00, 0.00)	0.61 (0.60, 0.62)	0.42 (0.42, 0.43)
	10	0.00 (0.00, 0.00)	0.00 (0.00, 0.00)	0.01 (0.01, 0.01)	0.61 (0.60, 0.63)	0.43 (0.42, 0.43)
	20	0.00 (0.00, 0.00)	0.01 (0.01, 0.01)	0.03 (0.03, 0.03)	0.62 (0.60, 0.63)	0.43 (0.42, 0.43)
	30	0.01 (0.00, 0.01)	0.03 (0.03, 0.03)	0.10 (0.10, 0.10)	0.62 (0.61, 0.63)	0.43 (0.43, 0.44)
	40	0.02 (0.02, 0.03)	0.10 (0.09, 0.10)	0.25 (0.24, 0.25)	0.62 (0.61, 0.64)	0.44 (0.43, 0.44)
	50	0.07 (0.07, 0.08)	0.23 (0.22, 0.24)	0.45 (0.44, 0.46)	0.62 (0.61, 0.63)	0.44 (0.44, 0.45)
	60	0.16 (0.16, 0.17)	0.39 (0.39, 0.40)	0.55 (0.54, 0.56)	0.58 (0.56, 0.59)	0.44 (0.43, 0.44)
	70	0.27 (0.26, 0.27)	0.44 (0.43, 0.45)	- (- , -)	0.48 (0.46, 0.49)	0.40 (0.39, 0.40)
80	0.25 (0.24, 0.26)	- (- , -)	- (- , -)	0.30 (0.29, 0.31)	0.29 (0.28, 0.29)	
White	0	0.00 (0.00, 0.00)	0.00 (0.00, 0.00)	0.00 (0.00, 0.00)	0.56 (0.55, 0.57)	0.40 (0.40, 0.41)
	10	0.00 (0.00, 0.00)	0.00 (0.00, 0.00)	0.01 (0.00, 0.01)	0.57 (0.56, 0.58)	0.41 (0.40, 0.41)
	20	0.00 (0.00, 0.00)	0.01 (0.00, 0.01)	0.03 (0.02, 0.03)	0.57 (0.56, 0.58)	0.41 (0.40, 0.41)
	30	0.00 (0.00, 0.01)	0.03 (0.02, 0.03)	0.09 (0.09, 0.09)	0.57 (0.56, 0.59)	0.41 (0.41, 0.42)
	40	0.02 (0.02, 0.02)	0.09 (0.08, 0.09)	0.22 (0.22, 0.23)	0.58 (0.56, 0.59)	0.41 (0.41, 0.42)
	50	0.07 (0.06, 0.07)	0.21 (0.20, 0.21)	0.41 (0.40, 0.42)	0.57 (0.56, 0.58)	0.42 (0.41, 0.42)
	60	0.15 (0.14, 0.16)	0.36 (0.35, 0.37)	0.51 (0.50, 0.52)	0.53 (0.52, 0.55)	0.41 (0.41, 0.42)
	70	0.25 (0.24, 0.26)	0.41 (0.40, 0.42)	- (- , -)	0.44 (0.43, 0.46)	0.38 (0.37, 0.38)
80	0.24 (0.23, 0.25)	- (- , -)	- (- , -)	0.28 (0.27, 0.29)	0.27 (0.27, 0.28)	
Black	0	0.00 (0.00, 0.00)	0.00 (0.00, 0.00)	0.00 (0.00, 0.00)	1.02 (0.98, 1.07)	0.64 (0.62, 0.66)
	10	0.00 (0.00, 0.00)	0.00 (0.00, 0.00)	0.01 (0.01, 0.02)	1.05 (1.00, 1.10)	0.66 (0.64, 0.68)
	20	0.00 (0.00, 0.00)	0.01 (0.01, 0.02)	0.06 (0.06, 0.07)	1.05 (1.01, 1.10)	0.66 (0.64, 0.68)
	30	0.01 (0.01, 0.02)	0.06 (0.06, 0.07)	0.21 (0.20, 0.23)	1.07 (1.02, 1.12)	0.67 (0.65, 0.69)
	40	0.05 (0.05, 0.06)	0.20 (0.19, 0.22)	0.50 (0.47, 0.52)	1.08 (1.03, 1.13)	0.68 (0.67, 0.70)
	50	0.16 (0.15, 0.17)	0.47 (0.44, 0.50)	0.83 (0.78, 0.87)	1.09 (1.03, 1.14)	0.70 (0.68, 0.72)
	60	0.34 (0.32, 0.37)	0.75 (0.71, 0.79)	0.99 (0.94, 1.04)	1.04 (0.98, 1.10)	0.70 (0.68, 0.73)
	70	0.51 (0.47, 0.55)	0.81 (0.76, 0.86)	- (- , -)	0.87 (0.81, 0.93)	0.65 (0.63, 0.68)
80	0.48 (0.44, 0.54)	- (- , -)	- (- , -)	0.58 (0.52, 0.65)	0.49 (0.46, 0.52)	

Devcan Version 6.2.0, April 2006, National Cancer Institute (<http://srab.cancer.gov/devcan/>).

Source: Incidence data are from the SEER 17 areas (San Francisco, Connecticut, Detroit, Hawaii, Iowa, New Mexico, Seattle, Utah, Atlanta, San Jose-Monterey, Los Angeles, Alaska Native Registry, Rural Georgia, California excluding SF/SJM/LA, Kentucky, Louisiana and New Jersey). Mortality data are from the NCHS public use data file for the total US.

- Statistic could not be calculated.

A percent or confidence interval value of 0.00 represents a value that is below 0.005.

Table XVIII-9 - continued

MYELOMA

Risk of Being Diagnosed With Cancer in 10, 20 and 30 Years, Lifetime Risk of Being Diagnosed with Cancer, and
Lifetime Risk of Dying from Cancer Given Cancer Free At Current Age
Both Sexes, 2002-2004 By Race/Ethnicity

Race/ Ethnicity	Current Age	Risk of Being Diagnosed with Cancer				Risk of Dying from Cancer	
		+10 yrs Percent (95% C.I.)	+20 yrs Percent (95% C.I.)	+30 yrs Percent (95% C.I.)	Eventually Percent (95% C.I.)	Eventually Percent (95% C.I.)	
Asian/ Pacific Islander	0	0.00 (0.00, 0.00)	0.00 (0.00, 0.00)	0.00 (0.00, 0.00)	0.43 (0.39, 0.49)	0.25 (0.22, 0.29)	
	10	0.00 (0.00, 0.00)	0.00 (0.00, 0.00)	0.00 (0.00, 0.00)	0.44 (0.40, 0.49)	0.25 (0.22, 0.29)	
	20	0.00 (0.00, 0.00)	0.00 (0.00, 0.00)	0.01 (0.01, 0.02)	0.44 (0.40, 0.49)	0.25 (0.22, 0.29)	
	30	0.00 (0.00, 0.00)	0.01 (0.01, 0.02)	0.06 (0.05, 0.07)	0.44 (0.40, 0.49)	0.25 (0.22, 0.29)	
	40	0.01 (0.01, 0.02)	0.06 (0.05, 0.07)	0.16 (0.14, 0.17)	0.44 (0.40, 0.50)	0.26 (0.23, 0.29)	
	50	0.05 (0.04, 0.05)	0.15 (0.13, 0.16)	0.29 (0.27, 0.32)	0.44 (0.39, 0.49)	0.26 (0.23, 0.29)	
	60	0.10 (0.09, 0.12)	0.26 (0.23, 0.29)	0.37 (0.33, 0.41)	0.40 (0.36, 0.46)	0.25 (0.21, 0.29)	
	70	0.17 (0.15, 0.19)	0.29 (0.26, 0.33)	- (- , -)	0.33 (0.28, 0.38)	0.22 (0.19, 0.26)	
	80	0.15 (0.12, 0.19)	- (- , -)	- (- , -)	0.20 (0.15, 0.26)	0.15 (0.12, 0.20)	
American Indian/ Alaska Native ^a	0	0.00 (0.00, 0.02)	0.00 (0.00, 0.02)	0.00 (0.00, 0.03)	0.55 (0.40, 0.87)	0.41 (0.32, 0.53)	
	10	0.00 (0.00, 0.01)	0.00 (0.00, 0.02)	0.01 (0.00, 0.03)	0.56 (0.40, 0.89)	0.41 (0.33, 0.54)	
	20	0.00 (0.00, 0.02)	0.01 (0.00, 0.03)	0.03 (0.01, 0.05)	0.57 (0.41, 0.90)	0.42 (0.33, 0.55)	
	30	0.01 (0.00, 0.03)	0.02 (0.01, 0.05)	0.09 (0.06, 0.14)	0.57 (0.41, 0.91)	0.43 (0.34, 0.56)	
	40	0.02 (0.01, 0.04)	0.09 (0.05, 0.14)	0.20 (0.13, 0.29)	0.58 (0.41, 0.92)	0.44 (0.35, 0.57)	
	50	0.07 (0.04, 0.12)	0.19 (0.12, 0.29)	0.42 (0.30, 0.58)	0.59 (0.41, 0.94)	0.45 (0.35, 0.59)	
	60	0.13 (0.07, 0.21)	0.38 (0.25, 0.54)	0.52 (0.36, 0.74)	0.55 (0.38, 0.93)	0.43 (0.33, 0.58)	
	70	0.29 (0.17, 0.46)	0.45 (0.29, 0.70)	- (- , -)	0.50 (0.31, 0.93)	0.42 (0.30, 0.59)	
	80	0.23 (0.10, 0.47)	- (- , -)	- (- , -)	0.29 (0.12, 0.87)	0.29 (0.16, 0.52)	
Hispanic ^b	0	0.00 (0.00, 0.00)	0.00 (0.00, 0.00)	0.00 (0.00, 0.00)	0.70 (0.65, 0.76)	0.40 (0.38, 0.43)	
	10	0.00 (0.00, 0.00)	0.00 (0.00, 0.00)	0.01 (0.00, 0.01)	0.71 (0.66, 0.77)	0.41 (0.39, 0.44)	
	20	0.00 (0.00, 0.00)	0.01 (0.00, 0.01)	0.03 (0.03, 0.03)	0.71 (0.66, 0.77)	0.41 (0.39, 0.44)	
	30	0.01 (0.00, 0.01)	0.03 (0.02, 0.03)	0.10 (0.09, 0.11)	0.72 (0.67, 0.78)	0.41 (0.39, 0.44)	
	40	0.02 (0.02, 0.03)	0.09 (0.09, 0.10)	0.26 (0.24, 0.28)	0.72 (0.67, 0.78)	0.42 (0.39, 0.44)	
	50	0.07 (0.06, 0.08)	0.24 (0.22, 0.26)	0.48 (0.45, 0.51)	0.71 (0.66, 0.77)	0.42 (0.40, 0.45)	
	60	0.18 (0.16, 0.20)	0.43 (0.39, 0.46)	0.62 (0.57, 0.66)	0.67 (0.62, 0.73)	0.41 (0.38, 0.44)	
	70	0.28 (0.25, 0.31)	0.49 (0.45, 0.54)	- (- , -)	0.55 (0.50, 0.62)	0.36 (0.34, 0.39)	
	80	0.28 (0.24, 0.33)	- (- , -)	- (- , -)	0.36 (0.31, 0.43)	0.26 (0.23, 0.29)	

Devcan Version 6.2.0, April 2006, National Cancer Institute (<http://srab.cancer.gov/devcan/>).

Source: Incidence data are from the SEER 17 areas (San Francisco, Connecticut, Detroit, Hawaii, Iowa, New Mexico, Seattle, Utah, Atlanta, San Jose-Monterey, Los Angeles, Alaska Native Registry, Rural Georgia, California excluding SF/SJM/LA, Kentucky, Louisiana and New Jersey). Mortality data are from the NCHS public use data file for the total US.

^a Underlying incidence and mortality data for American Indian/Alaska Native are based on the CHSDA (Contract Health Service Delivery Area) counties.

^b Hispanic is not mutually exclusive from whites, blacks, Asian/Pacific Islanders, and American Indians/Alaska Natives. Underlying incidence data for Hispanics are based on NHIA and exclude cases from the Alaska Native Registry and Kentucky. Underlying mortality data for Hispanics exclude deaths from Minnesota, New Hampshire and North Dakota.

- Statistic could not be calculated.

A percent or confidence interval value of 0.00 represents a value that is below 0.005.

Table XVIII-9 - continued

MYELOMA

Risk of Being Diagnosed With Cancer in 10, 20 and 30 Years, Lifetime Risk of Being Diagnosed with Cancer, and
Lifetime Risk of Dying from Cancer Given Cancer Free At Current Age
Males, 2002-2004 By Race/Ethnicity

Race/ Ethnicity	Current Age	Risk of Being Diagnosed with Cancer				Risk of Dying from Cancer	
		+10 yrs Percent (95% C.I.)	+20 yrs Percent (95% C.I.)	+30 yrs Percent (95% C.I.)	Eventually Percent (95% C.I.)	Eventually Percent (95% C.I.)	
All Races	0	0.00 (0.00, 0.00)	0.00 (0.00, 0.00)	0.00 (0.00, 0.00)	0.69 (0.67, 0.71)	0.46 (0.45, 0.47)	
	10	0.00 (0.00, 0.00)	0.00 (0.00, 0.00)	0.01 (0.01, 0.01)	0.70 (0.68, 0.72)	0.46 (0.46, 0.47)	
	20	0.00 (0.00, 0.00)	0.01 (0.01, 0.01)	0.03 (0.03, 0.04)	0.71 (0.69, 0.72)	0.47 (0.46, 0.48)	
	30	0.01 (0.01, 0.01)	0.03 (0.03, 0.04)	0.12 (0.11, 0.12)	0.71 (0.70, 0.73)	0.47 (0.47, 0.48)	
	40	0.03 (0.03, 0.03)	0.11 (0.11, 0.12)	0.29 (0.28, 0.30)	0.72 (0.70, 0.74)	0.48 (0.47, 0.49)	
	50	0.09 (0.08, 0.09)	0.27 (0.26, 0.28)	0.52 (0.51, 0.54)	0.72 (0.70, 0.74)	0.49 (0.48, 0.50)	
	60	0.20 (0.19, 0.21)	0.47 (0.46, 0.49)	0.65 (0.63, 0.66)	0.68 (0.66, 0.70)	0.49 (0.48, 0.50)	
	70	0.33 (0.31, 0.34)	0.53 (0.52, 0.55)	- (- , -)	0.58 (0.56, 0.60)	0.45 (0.44, 0.46)	
80	0.32 (0.30, 0.34)	- (- , -)	- (- , -)	0.38 (0.36, 0.41)	0.34 (0.33, 0.35)		
White	0	0.00 (0.00, 0.00)	0.00 (0.00, 0.00)	0.00 (0.00, 0.00)	0.65 (0.64, 0.67)	0.44 (0.44, 0.45)	
	10	0.00 (0.00, 0.00)	0.00 (0.00, 0.00)	0.01 (0.01, 0.01)	0.66 (0.64, 0.68)	0.45 (0.44, 0.46)	
	20	0.00 (0.00, 0.00)	0.01 (0.01, 0.01)	0.03 (0.03, 0.03)	0.67 (0.65, 0.69)	0.45 (0.44, 0.46)	
	30	0.01 (0.00, 0.01)	0.03 (0.03, 0.03)	0.11 (0.10, 0.11)	0.67 (0.65, 0.69)	0.46 (0.45, 0.47)	
	40	0.03 (0.02, 0.03)	0.10 (0.10, 0.11)	0.26 (0.25, 0.28)	0.68 (0.66, 0.70)	0.46 (0.46, 0.47)	
	50	0.08 (0.07, 0.08)	0.25 (0.24, 0.26)	0.49 (0.47, 0.51)	0.68 (0.66, 0.70)	0.47 (0.46, 0.48)	
	60	0.18 (0.17, 0.19)	0.44 (0.43, 0.46)	0.61 (0.59, 0.63)	0.64 (0.62, 0.66)	0.47 (0.46, 0.48)	
	70	0.31 (0.29, 0.32)	0.51 (0.49, 0.53)	- (- , -)	0.55 (0.52, 0.57)	0.43 (0.42, 0.44)	
80	0.31 (0.29, 0.32)	- (- , -)	- (- , -)	0.37 (0.35, 0.39)	0.33 (0.32, 0.34)		
Black	0	0.00 (0.00, 0.00)	0.00 (0.00, 0.00)	0.00 (0.00, 0.00)	1.09 (1.02, 1.17)	0.63 (0.60, 0.65)	
	10	0.00 (0.00, 0.00)	0.00 (0.00, 0.00)	0.01 (0.01, 0.02)	1.12 (1.05, 1.20)	0.64 (0.62, 0.67)	
	20	0.00 (0.00, 0.00)	0.01 (0.01, 0.02)	0.07 (0.06, 0.08)	1.13 (1.06, 1.21)	0.65 (0.62, 0.68)	
	30	0.01 (0.01, 0.02)	0.07 (0.06, 0.08)	0.24 (0.22, 0.27)	1.16 (1.08, 1.24)	0.66 (0.64, 0.69)	
	40	0.06 (0.05, 0.07)	0.23 (0.21, 0.26)	0.56 (0.52, 0.61)	1.18 (1.10, 1.26)	0.68 (0.65, 0.71)	
	50	0.19 (0.17, 0.21)	0.54 (0.50, 0.59)	0.94 (0.87, 1.00)	1.20 (1.12, 1.28)	0.71 (0.68, 0.74)	
	60	0.41 (0.36, 0.45)	0.86 (0.80, 0.94)	1.12 (1.04, 1.21)	1.17 (1.08, 1.26)	0.72 (0.68, 0.75)	
	70	0.61 (0.55, 0.68)	0.96 (0.87, 1.05)	- (- , -)	1.02 (0.92, 1.13)	0.68 (0.64, 0.71)	
80	0.63 (0.53, 0.73)	- (- , -)	- (- , -)	0.74 (0.62, 0.87)	0.55 (0.50, 0.60)		

Devcan Version 6.2.0, April 2006, National Cancer Institute (<http://srab.cancer.gov/devcan/>).

Source: Incidence data are from the SEER 17 areas (San Francisco, Connecticut, Detroit, Hawaii, Iowa, New Mexico, Seattle, Utah, Atlanta, San Jose-Monterey, Los Angeles, Alaska Native Registry, Rural Georgia, California excluding SF/SJM/LA, Kentucky, Louisiana and New Jersey). Mortality data are from the NCHS public use data file for the total US.

- Statistic could not be calculated.

A percent or confidence interval value of 0.00 represents a value that is below 0.005.

Table XVIII-9 - continued

MYELOMA

Risk of Being Diagnosed With Cancer in 10, 20 and 30 Years, Lifetime Risk of Being Diagnosed with Cancer, and
Lifetime Risk of Dying from Cancer Given Cancer Free At Current Age
Males, 2002-2004 By Race/Ethnicity

Race/ Ethnicity	Current Age	Risk of Being Diagnosed with Cancer				Risk of Dying from Cancer	
		+10 yrs Percent (95% C.I.)	+20 yrs Percent (95% C.I.)	+30 yrs Percent (95% C.I.)	Eventually Percent (95% C.I.)	Eventually Percent (95% C.I.)	
Asian/ Pacific Islander	0	0.00 (0.00, 0.00)	0.00 (0.00, 0.00)	0.00 (0.00, 0.01)	0.47 (0.41, 0.56)	0.26 (0.22, 0.32)	
	10	0.00 (0.00, 0.00)	0.00 (0.00, 0.00)	0.00 (0.00, 0.01)	0.48 (0.41, 0.56)	0.27 (0.22, 0.33)	
	20	0.00 (0.00, 0.00)	0.00 (0.00, 0.01)	0.01 (0.01, 0.02)	0.48 (0.41, 0.56)	0.27 (0.23, 0.33)	
	30	0.00 (0.00, 0.00)	0.01 (0.01, 0.02)	0.06 (0.05, 0.08)	0.48 (0.42, 0.57)	0.27 (0.23, 0.33)	
	40	0.01 (0.01, 0.02)	0.06 (0.05, 0.08)	0.18 (0.15, 0.21)	0.48 (0.42, 0.57)	0.27 (0.23, 0.33)	
	50	0.05 (0.04, 0.07)	0.17 (0.14, 0.20)	0.34 (0.29, 0.38)	0.48 (0.41, 0.57)	0.27 (0.23, 0.33)	
	60	0.12 (0.10, 0.15)	0.30 (0.25, 0.34)	0.41 (0.36, 0.48)	0.45 (0.38, 0.54)	0.26 (0.22, 0.33)	
	70	0.19 (0.16, 0.23)	0.32 (0.27, 0.39)	- (- , -)	0.36 (0.29, 0.45)	0.23 (0.19, 0.30)	
	80	0.17 (0.12, 0.23)	- (- , -)	- (- , -)	0.22 (0.15, 0.33)	0.16 (0.11, 0.25)	
American Indian/ Alaska Native ^a	0	0.00 (0.00, 0.04)	0.00 (0.00, 0.04)	0.00 (0.00, 0.04)	0.41 (0.22, 1.09)	0.45 (0.30, 0.70)	
	10	0.00 (0.00, 0.02)	0.00 (0.00, 0.02)	0.01 (0.00, 0.05)	0.42 (0.23, 1.11)	0.45 (0.31, 0.71)	
	20	0.00 (0.00, 0.02)	0.01 (0.00, 0.05)	0.02 (0.01, 0.07)	0.42 (0.23, 1.12)	0.46 (0.31, 0.72)	
	30	0.01 (0.00, 0.05)	0.02 (0.01, 0.07)	0.07 (0.03, 0.14)	0.43 (0.24, 1.15)	0.47 (0.32, 0.74)	
	40	0.01 (0.00, 0.04)	0.06 (0.02, 0.12)	0.13 (0.06, 0.26)	0.43 (0.23, 1.17)	0.49 (0.33, 0.77)	
	50	0.05 (0.01, 0.12)	0.13 (0.05, 0.26)	0.27 (0.14, 0.48)	0.44 (0.23, 1.23)	0.50 (0.34, 0.80)	
	60	0.09 (0.03, 0.21)	0.24 (0.11, 0.46)	0.43 (0.21, 0.81)	0.43 (0.21, 1.29)	0.50 (0.32, 0.83)	
	70	0.18 (0.06, 0.42)	0.41 (0.17, 0.85)	- (- , -)	0.42 (0.18, 1.44)	0.53 (0.31, 0.94)	
	80	0.34 (0.10, 0.91)	- (- , -)	- (- , -)	0.35 (0.10, 1.89)	0.50 (0.22, 1.11)	
Hispanic ^b	0	0.00 (0.00, 0.00)	0.00 (0.00, 0.00)	0.00 (0.00, 0.00)	0.78 (0.70, 0.87)	0.42 (0.39, 0.46)	
	10	0.00 (0.00, 0.00)	0.00 (0.00, 0.00)	0.01 (0.01, 0.01)	0.79 (0.71, 0.89)	0.43 (0.39, 0.47)	
	20	0.00 (0.00, 0.00)	0.01 (0.01, 0.01)	0.03 (0.03, 0.04)	0.79 (0.72, 0.89)	0.43 (0.39, 0.47)	
	30	0.01 (0.00, 0.01)	0.03 (0.03, 0.04)	0.11 (0.09, 0.12)	0.80 (0.72, 0.90)	0.43 (0.40, 0.48)	
	40	0.03 (0.02, 0.03)	0.10 (0.09, 0.12)	0.30 (0.27, 0.33)	0.81 (0.73, 0.91)	0.44 (0.40, 0.48)	
	50	0.08 (0.06, 0.09)	0.28 (0.25, 0.31)	0.54 (0.49, 0.59)	0.80 (0.72, 0.91)	0.44 (0.41, 0.49)	
	60	0.22 (0.19, 0.25)	0.49 (0.44, 0.55)	0.71 (0.64, 0.79)	0.77 (0.69, 0.88)	0.44 (0.40, 0.48)	
	70	0.32 (0.28, 0.37)	0.57 (0.50, 0.65)	- (- , -)	0.64 (0.56, 0.76)	0.39 (0.35, 0.44)	
	80	0.36 (0.29, 0.44)	- (- , -)	- (- , -)	0.46 (0.36, 0.61)	0.29 (0.24, 0.35)	

Devcan Version 6.2.0, April 2006, National Cancer Institute (<http://srab.cancer.gov/devcan/>).

Source: Incidence data are from the SEER 17 areas (San Francisco, Connecticut, Detroit, Hawaii, Iowa, New Mexico, Seattle, Utah, Atlanta, San Jose-Monterey, Los Angeles, Alaska Native Registry, Rural Georgia, California excluding SF/SJM/LA, Kentucky, Louisiana and New Jersey). Mortality data are from the NCHS public use data file for the total US.

^a Underlying incidence and mortality data for American Indian/Alaska Native are based on the CHSDA (Contract Health Service Delivery Area) counties.

^b Hispanic is not mutually exclusive from whites, blacks, Asian/Pacific Islanders, and American Indians/Alaska Natives. Underlying incidence data for Hispanics are based on NHIA and exclude cases from the Alaska Native Registry and Kentucky. Underlying mortality data for Hispanics exclude deaths from Minnesota, New Hampshire and North Dakota.

- Statistic could not be calculated.

A percent or confidence interval value of 0.00 represents a value that is below 0.005.

Table XVIII-9 - continued

MYELOMA

Risk of Being Diagnosed With Cancer in 10, 20 and 30 Years, Lifetime Risk of Being Diagnosed with Cancer, and
Lifetime Risk of Dying from Cancer Given Cancer Free At Current Age
Females, 2002-2004 By Race/Ethnicity

Race/ Ethnicity	Current Age	Risk of Being Diagnosed with Cancer						Risk of Dying from Cancer	
		+10 yrs Percent (95% C.I.)	+20 yrs Percent (95% C.I.)	+30 yrs Percent (95% C.I.)	Eventually Percent (95% C.I.)	Eventually Percent (95% C.I.)			
All Races	0	0.00 (0.00, 0.00)	0.00 (0.00, 0.00)	0.00 (0.00, 0.00)	0.53 (0.52, 0.55)	0.39 (0.39, 0.40)			
	10	0.00 (0.00, 0.00)	0.00 (0.00, 0.00)	0.00 (0.00, 0.01)	0.54 (0.52, 0.55)	0.40 (0.39, 0.40)			
	20	0.00 (0.00, 0.00)	0.00 (0.00, 0.01)	0.03 (0.02, 0.03)	0.54 (0.53, 0.56)	0.40 (0.39, 0.41)			
	30	0.00 (0.00, 0.01)	0.03 (0.02, 0.03)	0.08 (0.08, 0.09)	0.54 (0.53, 0.56)	0.40 (0.39, 0.41)			
	40	0.02 (0.02, 0.02)	0.08 (0.08, 0.09)	0.21 (0.20, 0.22)	0.54 (0.53, 0.56)	0.40 (0.40, 0.41)			
	50	0.06 (0.06, 0.06)	0.19 (0.18, 0.20)	0.37 (0.36, 0.39)	0.53 (0.52, 0.55)	0.41 (0.40, 0.41)			
	60	0.14 (0.13, 0.14)	0.33 (0.32, 0.34)	0.47 (0.45, 0.48)	0.49 (0.48, 0.51)	0.40 (0.39, 0.40)			
	70	0.22 (0.21, 0.23)	0.37 (0.36, 0.38)	- (- , -)	0.40 (0.39, 0.42)	0.36 (0.35, 0.37)			
80	0.21 (0.20, 0.22)	- (- , -)	- (- , -)	0.25 (0.24, 0.26)	0.26 (0.25, 0.26)				
White	0	0.00 (0.00, 0.00)	0.00 (0.00, 0.00)	0.00 (0.00, 0.00)	0.48 (0.47, 0.50)	0.37 (0.36, 0.37)			
	10	0.00 (0.00, 0.00)	0.00 (0.00, 0.00)	0.00 (0.00, 0.00)	0.49 (0.47, 0.50)	0.37 (0.36, 0.38)			
	20	0.00 (0.00, 0.00)	0.00 (0.00, 0.00)	0.02 (0.02, 0.02)	0.49 (0.47, 0.50)	0.37 (0.36, 0.38)			
	30	0.00 (0.00, 0.00)	0.02 (0.02, 0.02)	0.07 (0.07, 0.08)	0.49 (0.47, 0.51)	0.37 (0.37, 0.38)			
	40	0.02 (0.02, 0.02)	0.07 (0.07, 0.07)	0.18 (0.17, 0.19)	0.49 (0.48, 0.51)	0.37 (0.37, 0.38)			
	50	0.05 (0.05, 0.06)	0.17 (0.16, 0.18)	0.34 (0.32, 0.35)	0.48 (0.47, 0.50)	0.38 (0.37, 0.38)			
	60	0.12 (0.11, 0.13)	0.30 (0.28, 0.31)	0.42 (0.41, 0.44)	0.45 (0.43, 0.46)	0.37 (0.36, 0.38)			
	70	0.20 (0.19, 0.21)	0.34 (0.33, 0.35)	- (- , -)	0.37 (0.35, 0.38)	0.33 (0.33, 0.34)			
80	0.19 (0.18, 0.20)	- (- , -)	- (- , -)	0.23 (0.22, 0.24)	0.24 (0.24, 0.25)				
Black	0	0.00 (0.00, 0.00)	0.00 (0.00, 0.00)	0.00 (0.00, 0.01)	0.97 (0.90, 1.03)	0.66 (0.63, 0.68)			
	10	0.00 (0.00, 0.00)	0.00 (0.00, 0.01)	0.01 (0.01, 0.02)	0.99 (0.92, 1.05)	0.67 (0.65, 0.70)			
	20	0.00 (0.00, 0.00)	0.01 (0.01, 0.02)	0.06 (0.05, 0.07)	0.99 (0.93, 1.06)	0.67 (0.65, 0.70)			
	30	0.01 (0.01, 0.02)	0.06 (0.05, 0.07)	0.18 (0.17, 0.20)	1.00 (0.93, 1.06)	0.68 (0.65, 0.71)			
	40	0.05 (0.04, 0.06)	0.18 (0.16, 0.20)	0.44 (0.40, 0.47)	1.00 (0.94, 1.07)	0.69 (0.66, 0.72)			
	50	0.13 (0.12, 0.15)	0.40 (0.37, 0.44)	0.73 (0.68, 0.79)	0.99 (0.93, 1.06)	0.70 (0.67, 0.73)			
	60	0.29 (0.26, 0.33)	0.65 (0.60, 0.71)	0.88 (0.82, 0.95)	0.94 (0.87, 1.01)	0.69 (0.67, 0.72)			
	70	0.43 (0.39, 0.48)	0.70 (0.64, 0.77)	- (- , -)	0.77 (0.70, 0.85)	0.64 (0.61, 0.67)			
80	0.40 (0.35, 0.47)	- (- , -)	- (- , -)	0.50 (0.43, 0.58)	0.46 (0.43, 0.49)				

Devcan Version 6.2.0, April 2006, National Cancer Institute (<http://srab.cancer.gov/devcan/>).

Source: Incidence data are from the SEER 17 areas (San Francisco, Connecticut, Detroit, Hawaii, Iowa, New Mexico, Seattle, Utah, Atlanta, San Jose-Monterey, Los Angeles, Alaska Native Registry, Rural Georgia, California excluding SF/SJM/LA, Kentucky, Louisiana and New Jersey). Mortality data are from the NCHS public use data file for the total US.

- Statistic could not be calculated.

A percent or confidence interval value of 0.00 represents a value that is below 0.005.

Table XVIII-9 - continued

MYELOMA

Risk of Being Diagnosed With Cancer in 10, 20 and 30 Years, Lifetime Risk of Being Diagnosed with Cancer, and
Lifetime Risk of Dying from Cancer Given Cancer Free At Current Age
Females, 2002-2004 By Race/Ethnicity

Race/ Ethnicity	Current Age	Risk of Being Diagnosed with Cancer				Risk of Dying from Cancer	
		+10 yrs Percent (95% C.I.)	+20 yrs Percent (95% C.I.)	+30 yrs Percent (95% C.I.)	Eventually Percent (95% C.I.)	Eventually Percent (95% C.I.)	
Asian/ Pacific Islander	0	0.00 (0.00, 0.00)	0.00 (0.00, 0.00)	0.00 (0.00, 0.01)	0.40 (0.34, 0.48)	0.24 (0.20, 0.30)	
	10	0.00 (0.00, 0.00)	0.00 (0.00, 0.00)	0.00 (0.00, 0.01)	0.40 (0.35, 0.49)	0.24 (0.20, 0.30)	
	20	0.00 (0.00, 0.00)	0.00 (0.00, 0.01)	0.02 (0.01, 0.02)	0.40 (0.35, 0.49)	0.24 (0.20, 0.30)	
	30	0.00 (0.00, 0.00)	0.01 (0.01, 0.02)	0.06 (0.04, 0.07)	0.41 (0.35, 0.49)	0.24 (0.20, 0.31)	
	40	0.01 (0.01, 0.02)	0.05 (0.04, 0.07)	0.14 (0.12, 0.16)	0.41 (0.35, 0.49)	0.24 (0.20, 0.31)	
	50	0.04 (0.03, 0.05)	0.13 (0.10, 0.15)	0.26 (0.23, 0.30)	0.40 (0.34, 0.48)	0.24 (0.20, 0.30)	
	60	0.09 (0.07, 0.11)	0.23 (0.19, 0.26)	0.34 (0.29, 0.39)	0.36 (0.31, 0.45)	0.23 (0.19, 0.30)	
	70	0.15 (0.12, 0.18)	0.26 (0.22, 0.32)	- (- , -)	0.30 (0.24, 0.38)	0.21 (0.16, 0.27)	
80	0.14 (0.10, 0.19)	- (- , -)	- (- , -)	0.18 (0.12, 0.27)	0.14 (0.10, 0.22)		
American Indian/ Alaska Native ^a	0	0.00 (0.00, 0.04)	0.00 (0.00, 0.04)	0.01 (0.00, 0.05)	0.69 (0.46, 1.24)	0.39 (0.29, 0.57)	
	10	0.00 (0.00, 0.02)	0.01 (0.00, 0.04)	0.01 (0.00, 0.04)	0.70 (0.46, 1.26)	0.39 (0.29, 0.58)	
	20	0.01 (0.00, 0.04)	0.01 (0.00, 0.04)	0.03 (0.01, 0.08)	0.71 (0.47, 1.26)	0.40 (0.29, 0.58)	
	30	0.00 (0.00, 0.03)	0.02 (0.01, 0.06)	0.11 (0.06, 0.20)	0.70 (0.47, 1.27)	0.40 (0.30, 0.58)	
	40	0.02 (0.01, 0.06)	0.11 (0.06, 0.20)	0.27 (0.16, 0.42)	0.72 (0.47, 1.29)	0.41 (0.30, 0.60)	
	50	0.09 (0.05, 0.18)	0.25 (0.15, 0.41)	0.57 (0.37, 0.83)	0.71 (0.46, 1.30)	0.42 (0.31, 0.61)	
	60	0.17 (0.08, 0.30)	0.50 (0.31, 0.77)	0.60 (0.38, 0.94)	0.65 (0.40, 1.28)	0.38 (0.27, 0.59)	
	70	0.38 (0.20, 0.65)	0.50 (0.28, 0.85)	- (- , -)	0.56 (0.31, 1.26)	0.35 (0.23, 0.58)	
80	0.16 (0.05, 0.46)	- (- , -)	- (- , -)	0.24 (0.06, 1.13)	0.16 (0.07, 0.45)		
Hispanic ^b	0	0.00 (0.00, 0.00)	0.00 (0.00, 0.00)	0.00 (0.00, 0.00)	0.64 (0.58, 0.72)	0.39 (0.36, 0.43)	
	10	0.00 (0.00, 0.00)	0.00 (0.00, 0.00)	0.00 (0.00, 0.01)	0.65 (0.59, 0.73)	0.40 (0.37, 0.43)	
	20	0.00 (0.00, 0.00)	0.00 (0.00, 0.01)	0.02 (0.02, 0.03)	0.65 (0.59, 0.73)	0.40 (0.37, 0.43)	
	30	0.00 (0.00, 0.01)	0.02 (0.02, 0.03)	0.09 (0.08, 0.10)	0.65 (0.59, 0.73)	0.40 (0.37, 0.44)	
	40	0.02 (0.02, 0.02)	0.09 (0.08, 0.10)	0.23 (0.20, 0.25)	0.65 (0.59, 0.73)	0.40 (0.37, 0.44)	
	50	0.07 (0.06, 0.08)	0.21 (0.18, 0.24)	0.43 (0.39, 0.47)	0.64 (0.58, 0.72)	0.40 (0.37, 0.44)	
	60	0.15 (0.12, 0.17)	0.37 (0.33, 0.41)	0.54 (0.49, 0.60)	0.59 (0.53, 0.67)	0.39 (0.35, 0.43)	
	70	0.25 (0.21, 0.28)	0.43 (0.38, 0.49)	- (- , -)	0.49 (0.42, 0.57)	0.34 (0.31, 0.38)	
80	0.23 (0.19, 0.29)	- (- , -)	- (- , -)	0.30 (0.24, 0.39)	0.24 (0.21, 0.29)		

Devcan Version 6.2.0, April 2006, National Cancer Institute (<http://srab.cancer.gov/devcan/>).

Source: Incidence data are from the SEER 17 areas (San Francisco, Connecticut, Detroit, Hawaii, Iowa, New Mexico, Seattle, Utah, Atlanta, San Jose-Monterey, Los Angeles, Alaska Native Registry, Rural Georgia, California excluding SF/SJM/LA, Kentucky, Louisiana and New Jersey). Mortality data are from the NCHS public use data file for the total US.

^a Underlying incidence and mortality data for American Indian/Alaska Native are based on the CHSDA (Contract Health Service Delivery Area) counties.

^b Hispanic is not mutually exclusive from whites, blacks, Asian/Pacific Islanders, and American Indians/Alaska Natives. Underlying incidence data for Hispanics are based on NHIA and exclude cases from the Alaska Native Registry and Kentucky. Underlying mortality data for Hispanics exclude deaths from Minnesota, New Hampshire and North Dakota.

- Statistic could not be calculated.

A percent or confidence interval value of 0.00 represents a value that is below 0.005.

Table XVIII-10
MYELOMA

SEER INCIDENCE AND U.S. MORTALITY
AGE-ADJUSTED RATES AND TRENDS^a
 By Race/Ethnicity and Sex

SEER Incidence

RACE/ETHNICITY	Rate 2000-2004 ^b			Trend 1995-2004 ^c		
	Rate per 100,000 persons			APC (%)		
	Total	Males	Females	Total	Males	Females
All Races	5.6	7.0	4.5	-0.5	-0.4	-0.8*
White	5.2	6.6	4.1	-0.6	-0.5	-0.8
White Hispanic ^d	5.7	7.0	4.8	-0.1	-0.5	0.6
White Non-Hispanic ^d	5.1	6.5	4.0	-0.6	-0.5	-1.0
Black	11.3	14.0	9.5	-0.5	0.9	-1.8*
Asian/Pacific Islander	3.3	3.7	3.0	-1.4	-2.5	-0.1
Amer Ind/Alaska Nat ^e	5.3	4.8	5.7	-	-	-
Hispanic ^d	5.7	6.9	4.8	-0.1	-0.7	0.6

U.S. Mortality^f

RACE/ETHNICITY	Rate 2000-2004			Trend 1995-2004		
	Rate per 100,000 persons			APC (%)		
	Total	Males	Females	Total	Males	Females
All Races	3.7	4.6	3.1	-0.9*	-1.1*	-1.0*
White	3.5	4.4	2.8	-0.8*	-0.9*	-0.9*
White Hispanic ^d	3.2	3.8	2.7	-0.6	-0.7	-0.7
White Non-Hispanic ^d	3.5	4.4	2.8	-0.7*	-0.8*	-0.9*
Black	7.1	8.5	6.3	-1.4*	-1.8*	-1.3*
Asian/Pacific Islander	1.6	1.9	1.5	-2.9*	-4.2*	-1.4
Amer Ind/Alaska Nat						
Total U.S.	2.9	3.2	2.8	-2.0	-1.0	-2.9
CHSDA Counties	3.8	4.2	3.5	-2.0	0.7	-4.1
Non-CHSDA Counties	1.8	1.8	2.0	-	-	-
Hispanic ^d	3.1	3.7	2.6	-0.7	-0.8	-0.6

- The APC is the Annual Percent Change over the time interval.
- Statistic not shown. Rate based on less than 16 cases for the time interval. Trend based on less than 10 cases for at least one year within the time interval.
- a Rates are age-adjusted to the 2000 US Std Population (19 age groups - Census P25-1130). Trends are based on rates age-adjusted to the 2000 US Std Population (19 age groups - Census P25-1130).
- b Incidence data used in calculating the rates are from the 17 SEER areas (San Francisco, Connecticut, Detroit, Hawaii, Iowa, New Mexico, Seattle, Utah, Atlanta, San Jose-Monterey, Los Angeles, Alaska Native Registry, Rural Georgia, California excluding SF/SJM/LA, Kentucky, Louisiana and New Jersey).
- c Incidence data used in calculating the trends are from the 13 SEER areas (San Francisco, Connecticut, Detroit, Hawaii, Iowa, New Mexico, Seattle, Utah, Atlanta, San Jose-Monterey, Los Angeles, Alaska Native Registry and Rural Georgia).
- d Hispanic and Non-Hispanic are not mutually exclusive from whites, blacks, Asian/Pacific Islanders, and American Indians/Alaska Natives. Incidence data for Hispanics and Non-Hispanics are based on NHIA and exclude cases from the Alaska Native Registry and Kentucky. The 2000-2004 Hispanic and Non-Hispanic death rates exclude deaths from Minnesota, New Hampshire and North Dakota. The 1995-2004 Hispanic and Non-Hispanic mortality trends exclude deaths from Maine, Minnesota, New Hampshire, North Dakota, and Oklahoma.
- e Incidence data for American Indian/Alaska Native are based on the CHSDA(Contract Health Service Delivery Area) counties.
- f Mortality data are analyzed from a public use file provided by the National Center for Health Statistics (NCHS).
- * The APC is significantly different from zero (p<.05).

Table XVIII-11

MYELOMAAGE-ADJUSTED SEER INCIDENCE RATES^a

By Registry, Race and Sex

	<u>All Races</u>			<u>Whites</u>			<u>Blacks</u>		
	<u>Total</u>	<u>Males</u>	<u>Females</u>	<u>Total</u>	<u>Males</u>	<u>Females</u>	<u>Total</u>	<u>Males</u>	<u>Females</u>
<u>SEER INCIDENCE RATES^a, 2000-2004</u>									
<u>REGISTRY</u>									
Atlanta & Rural Georgia	6.6	8.4	5.3	5.2	6.7	4.1	10.6	14.2	8.3
Atlanta	6.5	8.1	5.4	5.2	6.6	4.2	10.3	13.3	8.3
Rural Georgia	8.0	13.1	-	4.3	-	-	15.1	25.4	-
California	5.2	6.3	4.3	4.9	6.2	4.0	10.8	12.8	9.5
Greater Bay Area	5.3	6.5	4.3	5.2	6.4	4.2	10.4	12.2	9.1
San Francisco-Oakland	5.2	6.3	4.4	4.9	6.0	4.0	10.2	11.5	9.3
San Jose-Monterey	5.5	6.9	4.2	5.8	7.1	4.7	12.4	19.8	-
Los Angeles	5.5	6.6	4.7	5.0	6.2	4.2	11.4	13.4	10.1
Greater California	5.0	6.2	4.0	4.8	6.1	3.8	10.3	12.7	8.5
Connecticut	5.3	6.7	4.3	5.0	6.4	4.0	9.7	11.6	8.4
Detroit	6.9	8.7	5.6	5.6	7.4	4.3	12.0	14.5	10.4
Hawaii	3.9	5.1	3.0	5.3	8.1	2.9	-	-	-
Iowa	5.5	7.0	4.4	5.4	6.9	4.2	13.3	-	-
Kentucky	5.6	7.1	4.6	5.3	6.7	4.2	11.1	13.1	9.6
Louisiana	6.5	8.5	5.1	4.8	6.2	3.8	11.8	16.3	9.1
New Jersey	6.1	7.4	5.1	5.5	6.8	4.4	11.8	14.1	10.6
New Mexico	5.2	6.7	4.0	5.1	6.6	3.9	-	-	-
Seattle-Puget Sound	5.9	7.6	4.5	5.8	7.5	4.5	10.8	13.9	7.9
Utah	5.3	6.9	4.0	5.4	7.0	4.0	-	-	-
9 SEER Areas ^b	5.7	7.1	4.6	5.3	6.9	4.2	10.9	13.2	9.3
11 SEER Areas ^b	5.6	7.0	4.6	5.3	6.7	4.2	11.0	13.4	9.5
13 SEER Areas ^b	5.6	7.0	4.6	5.3	6.8	4.2	11.1	13.5	9.5
17 SEER Areas ^b	5.6	7.0	4.5	5.2	6.6	4.1	11.3	14.0	9.5

^a Rates are per 100,000 and are age-adjusted to the 2000 US Std Population (19 age groups - Census P25-1130)

^b The SEER 9 areas are San Francisco, Connecticut, Detroit, Hawaii, Iowa, New Mexico, Seattle, Utah and Atlanta.

The SEER 11 areas comprise the SEER 9 areas plus San Jose-Monterey and Los Angeles.

The SEER 13 areas comprise the SEER 11 areas plus the Alaska Native Registry and Rural Georgia.

The SEER 17 areas comprise the SEER 13 areas plus California excluding SF/SJM/LA, Kentucky, Louisiana and New Jersey

- Statistic not shown. Rate based on less than 16 cases for the time interval.

Table XVIII-12

MYELOMAAGE-ADJUSTED SEER DEATH RATES^a

By Registry, Race and Sex

	<u>All Races</u>			<u>Whites</u>			<u>Blacks</u>		
	<u>Total</u>	<u>Males</u>	<u>Females</u>	<u>Total</u>	<u>Males</u>	<u>Females</u>	<u>Total</u>	<u>Males</u>	<u>Females</u>
<u>SEER DEATH RATES^a, 2000-2004</u>									
REGISTRY									
Atlanta & Rural Georgia	4.6	5.3	4.0	3.8	4.5	3.2	7.0	8.0	6.2
Atlanta	4.6	5.1	4.1	3.8	4.4	3.3	7.0	7.7	6.4
Rural Georgia	4.5	7.1	-	-	-	-	-	-	-
California	3.4	4.2	2.8	3.3	4.3	2.7	7.3	8.3	6.7
Greater Bay Area	3.4	4.1	2.9	3.5	4.2	3.0	7.7	9.3	6.6
San Francisco-Oakland	3.5	4.4	2.9	3.5	4.5	2.8	7.8	8.8	7.1
San Jose-Monterey	3.2	3.5	2.9	3.6	3.8	3.3	-	-	-
Los Angeles	3.4	4.1	2.8	3.2	4.2	2.5	7.5	8.6	7.0
Greater California	3.3	4.2	2.7	3.3	4.3	2.6	6.7	7.0	6.3
Connecticut	3.5	4.0	3.2	3.3	3.8	3.0	7.0	7.2	7.1
Detroit	4.3	5.5	3.6	3.6	4.7	2.9	7.4	8.9	6.5
Hawaii	2.4	3.0	1.9	3.4	4.6	2.3	-	-	-
Iowa	3.8	4.5	3.2	3.7	4.4	3.2	10.3	-	-
Kentucky	3.9	5.1	3.2	3.8	4.9	3.1	6.8	9.1	5.2
Louisiana	4.3	5.7	3.3	3.5	4.5	2.7	7.1	10.2	5.2
New Jersey	3.8	4.6	3.3	3.5	4.3	3.0	7.2	8.1	6.5
New Mexico	3.7	4.7	3.0	3.6	4.5	3.0	-	-	-
Seattle-Puget Sound	4.0	5.2	3.1	4.0	5.2	3.1	7.1	10.4	-
Utah	3.9	5.1	3.0	3.9	5.1	3.0	-	-	-
9 SEER Areas ^b	3.8	4.7	3.2	3.7	4.6	3.0	7.3	8.7	6.5
11 SEER Areas ^b	3.7	4.5	3.1	3.6	4.5	2.9	7.4	8.8	6.5
13 SEER Areas ^b	3.7	4.5	3.1	3.6	4.5	2.9	7.4	8.9	6.5
17 SEER Areas ^b	3.7	4.5	3.0	3.5	4.4	2.9	7.2	8.8	6.2
Total U.S.	3.7	4.6	3.1	3.5	4.4	2.8	7.1	8.5	6.3

^a NCHS public use data file for the total US. Rates are per 100,000 and are age-adjusted to the 2000 US Std Population (19 age groups - Census P25-1130).

^b The SEER 9 areas are San Francisco, Connecticut, Detroit, Hawaii, Iowa, New Mexico, Seattle, Utah and Atlanta.

The SEER 11 areas comprise the SEER 9 areas plus San Jose-Monterey and Los Angeles.

The SEER 13 areas comprise the SEER 11 areas plus the Alaska Native Registry and Rural Georgia.

The SEER 17 areas comprise the SEER 13 areas plus California excluding SF/SJM/LA, Kentucky, Louisiana and New Jersey

- Statistic not shown. Rate based on less than 16 cases for the time interval.

Table XVIII-13
MYELOMAAVERAGE ANNUAL AGE-ADJUSTED CANCER DEATH^a RATES BY STATE, ALL RACES, 2000-2004

Males and Females

State	Rate	SE	Rank	PD	State	Rate	SE	Rank	PD
TOTAL U.S.	3.7	0.02							
High Five States									
District of Columbia	5.9 ^b	0.46	(01)	59.5 ^c					
South Carolina	4.8 ^b	0.15	(02)	29.7 ^c					
South Dakota	4.5	0.33	(03)	21.6 ^c					
Alabama	4.5 ^b	0.14	(04)	21.6 ^c					
Tennessee	4.3 ^b	0.12	(05)	16.2 ^c					
Low Five States									
New York	3.3 ^b	0.06	(47)	-10.8					
Florida	3.2 ^b	0.05	(48)	-13.5					
Arizona	3.1 ^b	0.11	(49)	-16.2 ^c					
Vermont	3.0	0.31	(50)	-18.9 ^c					
Hawaii	2.4 ^b	0.19	(51)	-35.1 ^c					
Alabama	4.5 ^b	0.14	(04)	21.6 ^c	Montana	4.2	0.29	(10)	13.5
Alaska	3.7	0.48	(32)	0.0	Nebraska	3.6	0.20	(37)	-2.7
Arizona	3.1 ^b	0.11	(49)	-16.2 ^c	Nevada	3.5	0.19	(41)	-5.4
Arkansas	4.0	0.16	(15)	8.1	New Hampshire	3.6	0.24	(36)	-2.7
California	3.4 ^b	0.05	(45)	-8.1	New Jersey	3.8	0.09	(29)	2.7
Colorado	3.6	0.14	(35)	-2.7	New Mexico	3.7	0.20	(33)	0.0
Connecticut	3.5	0.13	(42)	-5.4	New York	3.3 ^b	0.06	(47)	-10.8
Delaware	3.6	0.29	(40)	-2.7	North Carolina	4.3 ^b	0.10	(07)	16.2 ^c
District of Columbia	5.9 ^b	0.46	(01)	59.5 ^c	North Dakota	4.2	0.34	(09)	13.5
Florida	3.2 ^b	0.05	(48)	-13.5	Ohio	3.9	0.08	(20)	5.4
Georgia	4.3 ^b	0.11	(08)	16.2 ^c	Oklahoma	3.4	0.14	(44)	-8.1
Hawaii	2.4 ^b	0.19	(51)	-35.1 ^c	Oregon	4.0	0.15	(16)	8.1
Idaho	3.7	0.25	(31)	0.0	Pennsylvania	3.7	0.07	(34)	0.0
Illinois	3.9	0.08	(23)	5.4	Rhode Island	3.3	0.24	(46)	-10.8
Indiana	3.9	0.11	(19)	5.4	South Carolina	4.8 ^b	0.15	(02)	29.7 ^c
Iowa	3.8	0.15	(30)	2.7	South Dakota	4.5	0.33	(03)	21.6 ^c
Kansas	3.9	0.17	(18)	5.4	Tennessee	4.3 ^b	0.12	(05)	16.2 ^c
Kentucky	3.9	0.14	(17)	5.4	Texas	3.8	0.07	(27)	2.7
Louisiana	4.3 ^b	0.14	(06)	16.2 ^c	Utah	3.9	0.22	(21)	5.4
Maine	3.8	0.22	(28)	2.7	Vermont	3.0	0.31	(50)	-18.9 ^c
Maryland	4.1	0.13	(11)	10.8	Virginia	4.1	0.11	(13)	10.8
Massachusetts	3.6	0.10	(39)	-2.7	Washington	4.0	0.12	(14)	8.1
Michigan	4.1 ^b	0.09	(12)	10.8	West Virginia	3.6	0.18	(38)	-2.7
Minnesota	3.8	0.12	(25)	2.7	Wisconsin	3.5	0.11	(43)	-5.4
Mississippi	3.9	0.17	(22)	5.4	Wyoming	3.8	0.40	(24)	2.7
Missouri	3.8	0.11	(26)	2.7					

^a NCHS public use data file. Rates are per 100,000 and are age-adjusted to the 2000 US Std Population (19 age groups - Census P25-1130).

^b Difference between state rate and total U.S. rate is statistically significant ($p < .0002$).

^c Absolute percent difference between state rate and total U.S. rate is 15% or more.

SE Standard error of the rate.

PD Percent difference between state rate and total U.S. rate.

Table XVIII-14
MYELOMAAVERAGE ANNUAL AGE-ADJUSTED CANCER DEATH^a RATES BY STATE, ALL RACES, 2000-2004

Males

State	Rate	SE	Rank	PD	State	Rate	SE	Rank	PD
TOTAL U.S.	4.6	0.03							
High Five States									
District of Columbia	6.6	0.79	(01)	43.5 ^c					
South Carolina	5.8 ^b	0.28	(02)	26.1 ^c					
Louisiana	5.7 ^b	0.26	(03)	23.9 ^c					
Alabama	5.7 ^b	0.25	(04)	23.9 ^c					
South Dakota	5.6	0.55	(05)	21.7 ^c					
Low Five States									
Florida	4.0 ^b	0.09	(47)	-13.0					
Vermont	4.0	0.56	(48)	-13.0					
Connecticut	4.0	0.23	(49)	-13.0					
Alaska	3.7	0.73	(50)	-19.6 ^c					
Hawaii	3.0 ^b	0.32	(51)	-34.8 ^c					
Alabama	5.7 ^b	0.25	(04)	23.9 ^c	Montana	5.3	0.50	(06)	15.2 ^c
Alaska	3.7	0.73	(50)	-19.6 ^c	Nebraska	4.7	0.35	(22)	2.2
Arizona	4.0	0.19	(46)	-13.0	Nevada	4.5	0.33	(37)	-2.2
Arkansas	5.1	0.29	(14)	10.9	New Hampshire	4.6	0.42	(34)	0.0
California	4.2 ^b	0.08	(45)	-8.7	New Jersey	4.6	0.16	(33)	0.0
Colorado	4.4	0.25	(38)	-4.3	New Mexico	4.7	0.35	(27)	2.2
Connecticut	4.0	0.23	(49)	-13.0	New York	4.2 ^b	0.10	(44)	-8.7
Delaware	4.6	0.52	(30)	0.0	North Carolina	5.2	0.18	(10)	13.0
District of Columbia	6.6	0.79	(01)	43.5 ^c	North Dakota	5.1	0.57	(11)	10.9
Florida	4.0 ^b	0.09	(47)	-13.0	Ohio	4.7	0.14	(24)	2.2
Georgia	5.0	0.20	(17)	8.7	Oklahoma	4.3	0.24	(43)	-6.5
Hawaii	3.0 ^b	0.32	(51)	-34.8 ^c	Oregon	5.0	0.25	(16)	8.7
Idaho	4.8	0.43	(20)	4.3	Pennsylvania	4.3	0.12	(40)	-6.5
Illinois	4.7	0.14	(25)	2.2	Rhode Island	4.3	0.42	(41)	-6.5
Indiana	5.0	0.20	(18)	8.7	South Carolina	5.8 ^b	0.28	(02)	26.1 ^c
Iowa	4.5	0.25	(35)	-2.2	South Dakota	5.6	0.55	(05)	21.7 ^c
Kansas	4.6	0.28	(28)	0.0	Tennessee	5.3	0.22	(07)	15.2 ^c
Kentucky	5.1	0.25	(12)	10.9	Texas	4.6	0.11	(32)	0.0
Louisiana	5.7 ^b	0.26	(03)	23.9 ^c	Utah	5.1	0.38	(13)	10.9
Maine	4.7	0.39	(23)	2.2	Vermont	4.0	0.56	(48)	-13.0
Maryland	4.8	0.22	(21)	4.3	Virginia	5.1	0.20	(15)	10.9
Massachusetts	4.4	0.18	(39)	-4.3	Washington	5.3	0.21	(08)	15.2 ^c
Michigan	5.3 ^b	0.16	(09)	15.2 ^c	West Virginia	4.7	0.33	(26)	2.2
Minnesota	5.0	0.22	(19)	8.7	Wisconsin	4.5	0.20	(36)	-2.2
Mississippi	4.3	0.28	(42)	-6.5	Wyoming	4.6	0.69	(31)	0.0
Missouri	4.6	0.19	(29)	0.0					

^a NCHS public use data file. Rates are per 100,000 and are age-adjusted to the 2000 US Std Population (19 age groups - Census P25-1130).

^b Difference between state rate and total U.S. rate is statistically significant ($p < .0002$).

^c Absolute percent difference between state rate and total U.S. rate is 15% or more.

SE Standard error of the rate.

PD Percent difference between state rate and total U.S. rate.

Table XVIII-15
MYELOMAAVERAGE ANNUAL AGE-ADJUSTED CANCER DEATH^a RATES BY STATE, ALL RACES, 2000-2004

Females

State	Rate	SE	Rank	PD	State	Rate	SE	Rank	PD
TOTAL U.S.	3.1	0.02							
High Five States									
District of Columbia	5.5 ^b	0.58	(01)	77.4 ^c					
South Carolina	4.2 ^b	0.19	(02)	35.5 ^c					
South Dakota	3.7	0.39	(03)	19.4 ^c					
Georgia	3.7 ^b	0.14	(04)	19.4 ^c					
Alaska	3.7	0.65	(05)	19.4 ^c					
Low Five States									
Rhode Island	2.7	0.28	(47)	-12.9					
Florida	2.5 ^b	0.06	(48)	-19.4 ^c					
Vermont	2.4	0.36	(49)	-22.6 ^c					
Arizona	2.4 ^b	0.12	(50)	-22.6 ^c					
Hawaii	1.9 ^b	0.23	(51)	-38.7 ^c					
Alabama	3.7	0.16	(06)	19.4 ^c	Montana	3.2	0.34	(23)	3.2
Alaska	3.7	0.65	(05)	19.4 ^c	Nebraska	2.9	0.23	(40)	-6.5
Arizona	2.4 ^b	0.12	(50)	-22.6 ^c	Nevada	2.7	0.23	(46)	-12.9
Arkansas	3.3	0.20	(18)	6.5	New Hampshire	2.9	0.29	(38)	-6.5
California	2.8 ^b	0.06	(45)	-9.7	New Jersey	3.3	0.11	(22)	6.5
Colorado	3.1	0.17	(32)	0.0	New Mexico	3.0	0.24	(36)	-3.2
Connecticut	3.2	0.17	(25)	3.2	New York	2.8 ^b	0.07	(44)	-9.7
Delaware	2.8	0.34	(43)	-9.7	North Carolina	3.7 ^b	0.12	(08)	19.4 ^c
District of Columbia	5.5 ^b	0.58	(01)	77.4 ^c	North Dakota	3.5	0.41	(12)	12.9
Florida	2.5 ^b	0.06	(48)	-19.4 ^c	Ohio	3.4	0.10	(15)	9.7
Georgia	3.7 ^b	0.14	(04)	19.4 ^c	Oklahoma	2.8	0.17	(41)	-9.7
Hawaii	1.9 ^b	0.23	(51)	-38.7 ^c	Oregon	3.1	0.18	(29)	0.0
Idaho	2.9	0.29	(37)	-6.5	Pennsylvania	3.2	0.09	(28)	3.2
Illinois	3.3	0.10	(17)	6.5	Rhode Island	2.7	0.28	(47)	-12.9
Indiana	3.2	0.13	(24)	3.2	South Carolina	4.2 ^b	0.19	(02)	35.5 ^c
Iowa	3.2	0.18	(27)	3.2	South Dakota	3.7	0.39	(03)	19.4 ^c
Kansas	3.5	0.21	(11)	12.9	Tennessee	3.7 ^b	0.15	(09)	19.4 ^c
Kentucky	3.2	0.16	(26)	3.2	Texas	3.3	0.08	(21)	6.5
Louisiana	3.3	0.16	(16)	6.5	Utah	3.0	0.26	(34)	-3.2
Maine	3.1	0.27	(30)	0.0	Vermont	2.4	0.36	(49)	-22.6 ^c
Maryland	3.7	0.16	(07)	19.4 ^c	Virginia	3.4	0.13	(14)	9.7
Massachusetts	3.0	0.12	(33)	-3.2	Washington	3.1	0.14	(31)	0.0
Michigan	3.3	0.11	(19)	6.5	West Virginia	2.9	0.21	(39)	-6.5
Minnesota	3.0	0.15	(35)	-3.2	Wisconsin	2.8	0.13	(42)	-9.7
Mississippi	3.6	0.21	(10)	16.1 ^c	Wyoming	3.4	0.51	(13)	9.7
Missouri	3.3	0.14	(20)	6.5					

^a NCHS public use data file. Rates are per 100,000 and are age-adjusted to the 2000 US Std Population (19 age groups - Census P25-1130).

^b Difference between state rate and total U.S. rate is statistically significant ($p < .0002$).

^c Absolute percent difference between state rate and total U.S. rate is 15% or more.

SE Standard error of the rate.

PD Percent difference between state rate and total U.S. rate.

Table XVIII-16
MYELOMA (Invasive)Estimated United States Cancer Prevalence Counts^a on January 1, 2004
By Race/Ethnicity, Sex and Years Since Diagnosis

Years Since Diagnosis	0 to <5	5 to <10	10 to <15	15 to <20	20 to <25	0 to <14 ^e	0 to <29 ^e	>=29 ^g	Complete ^h
<u>Race/Sex</u>									
All Races ^b	36,315	11,045	3,880	1,484	494	50,825	53,382	330	53,712
Males	20,046	6,178	2,255	854	231	28,226	29,616	129	29,745
Females	16,269	4,867	1,625	630	263	22,599	23,766	201	23,967
White ^b	28,905	8,630	2,903	1,085	345	40,179	42,003	62	42,065
Males	16,372	5,025	1,752	628	162	22,975	23,988	0 ⁱ	23,988
Females	12,533	3,605	1,151	457	183	17,204	18,015	62 ⁱ	18,077
Black ^b	6,139	2,008	827	328	133	8,840	9,460	+	+
Males	3,040	927	437	192	65	4,330	4,661	+	+
Females	3,099	1,081	390	136	68	4,510	4,799	+	+
Asian/Pacific Islander ^c	765	229	+	+	+	1,070	+	+	+
Males	365	133	+	+	+	539	+	+	+
Females	400	96	+	+	+	531	+	+	+
Hispanic ^d	2,310	610	+	+	+	3,127	+	+	+
Males	1,256	341	+	+	+	1,722	+	+	+
Females	1,054	269	+	+	+	1,405	+	+	+

Estimated prevalence percent^a on January 1, 2004, of the SEER 11 population diagnosed in the previous 10 years
By Age at Prevalence, Race/Ethnicity and Sex

Age at Prevalence	Age Specific (Crude)										Age-Adjusted ^f
	All Ages	0-9	10-19	20-29	30-39	40-49	50-59	60-69	70-79	80+	All Ages
<u>Race/Sex</u>											
All Races ^c	0.0146%	-	-	0.0002%	0.0017%	0.0072%	0.0256%	0.0548%	0.0830%	0.0705%	0.0155%
Males	0.0162%	-	-	-	0.0024%	0.0086%	0.0313%	0.0673%	0.1039%	0.0836%	0.0190%
Females	0.0130%	-	-	0.0002%	0.0011%	0.0058%	0.0203%	0.0437%	0.0672%	0.0633%	0.0126%
White ^c	0.0144%	-	-	0.0001%	0.0016%	0.0069%	0.0235%	0.0525%	0.0785%	0.0660%	0.0146%
Males	0.0163%	-	-	-	0.0023%	0.0082%	0.0294%	0.0664%	0.1002%	0.0789%	0.0183%
Females	0.0125%	-	-	-	0.0008%	0.0055%	0.0178%	0.0397%	0.0617%	0.0591%	0.0115%
Black ^c	0.0211%	-	-	-	0.0040%	0.0122%	0.0510%	0.1047%	0.1585%	0.1241%	0.0294%
Males	0.0224%	-	-	-	0.0041%	0.0156%	0.0595%	0.1274%	0.1953%	0.1304%	0.0350%
Females	0.0200%	-	-	-	0.0039%	0.0093%	0.0439%	0.0869%	0.1344%	0.1211%	0.0253%
Asian/Pacific Islander ^c	0.0089%	-	-	-	0.0006%	0.0044%	0.0163%	0.0287%	0.0541%	0.0608%	0.0099%
Males	0.0092%	-	-	-	0.0013%	0.0048%	0.0184%	0.0264%	0.0631%	0.0807%	0.0114%
Females	0.0087%	-	-	-	-	0.0041%	0.0145%	0.0305%	0.0476%	0.0476%	0.0089%
Hispanic ^d	0.0071%	-	-	-	0.0018%	0.0067%	0.0207%	0.0484%	0.0814%	0.0619%	0.0141%
Males	0.0075%	-	-	-	0.0029%	0.0076%	0.0251%	0.0540%	0.0908%	0.0962%	0.0169%
Females	0.0067%	-	-	-	-	0.0057%	0.0166%	0.0438%	0.0747%	0.0424%	0.0119%

^a US 2004 cancer prevalence counts are based on 2004 cancer prevalence proportions from the SEER registries and 1/1/2004 US population estimates based on the average of 2003 and 2004 population estimates from the US Bureau of the Census. Prevalence was calculated using the First Malignant Primary Only for a person.

^{b c d} Statistics based on (b) SEER 9 Areas (c) SEER 11 Areas and Rural Georgia (d) NHIA for Hispanic for SEER 11 Areas and Rural Georgia.

^e Maximum limited-duration prevalence: 29 years for 1975-2004 SEER 9 data; 14 years for 1990-2004 SEER 11 data (used to calculate prevalence for Hispanics and Asian Pacific Islanders).

^f Percentages are age-adjusted to the 2000 US Standard Population (19 age groups - Census P25-1130) by 5-year age groups.

^{g h i} (g) Cases diagnosed more than 29 years ago were estimated using the completeness index method (Capocaccia et. al. 1997, Merrill et. al. 2000). (h) Complete prevalence is obtained by summing 0 to <29 and >=29. (i) Age-specific completeness index was approximated using empirical data from historical Connecticut tumor registry.

- Statistic not shown. Statistic based on fewer than 5 cases estimated alive in SEER for the time interval.

+ Not available.

SEER Incidence, Delay Adjusted Incidence and US Death Rates^a Myeloma, by Race and Sex

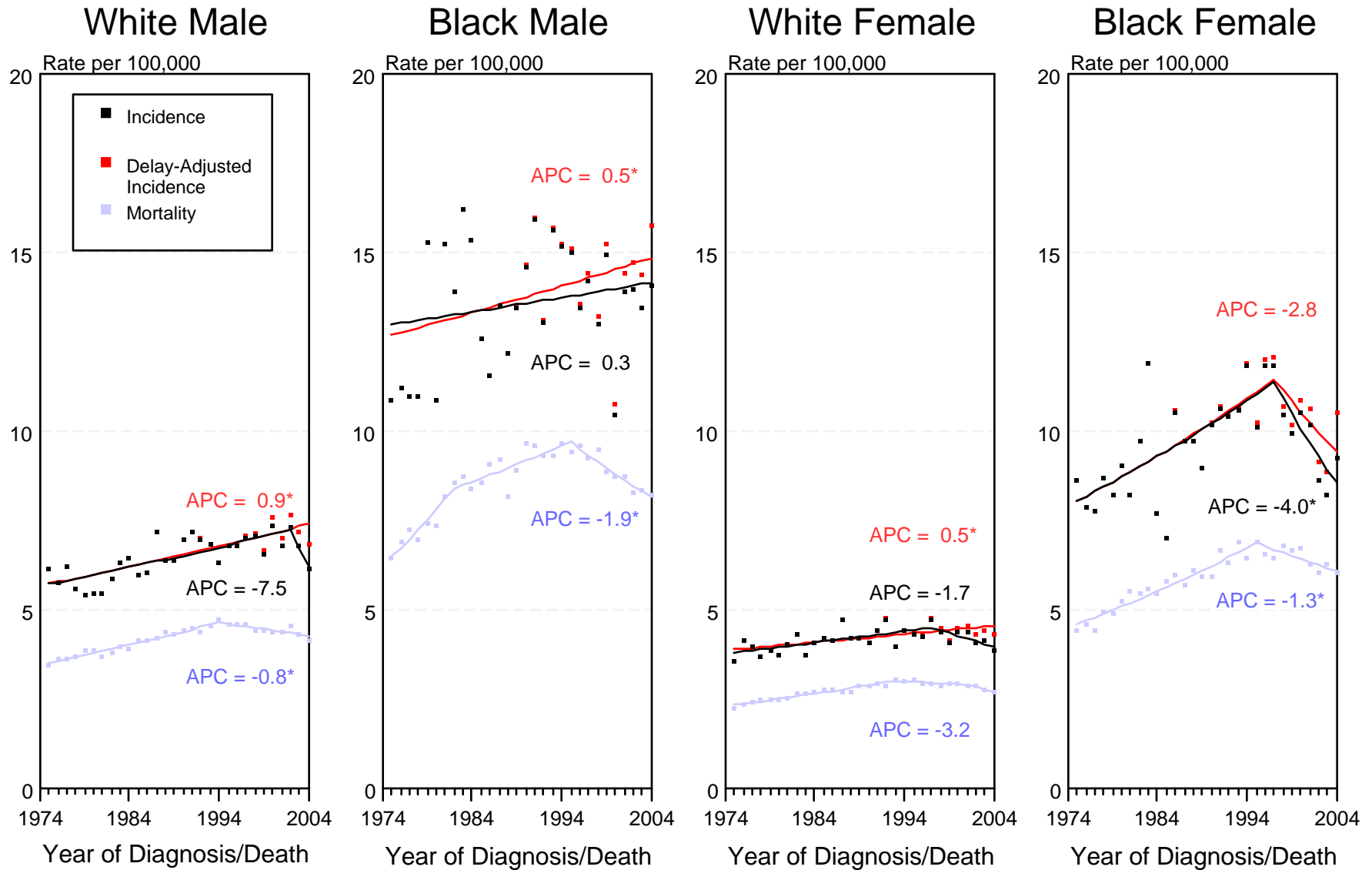


Figure XVIII-1

^a Source: SEER 9 areas and NCHS public use data file for the total US. Rates are age-adjusted to the 2000 US Std Population (19 age groups - Census P25-1103). Regression lines and APCs are calculated using the Joinpoint Regression Program Version 3.0, April 2005, National Cancer Institute.

The APC is the Annual Percent Change for the regression line segments. The APC shown on the graph is for the most recent trend.

* The APC is significantly different from zero ($p < 0.05$).

SEER Incidence and US Death Rates^a Myeloma, Both Sexes

Joinpoint Analyses for Whites and Blacks from 1975-2004
and for Asian/Pacific Islanders, American Indians/Alaska Natives and Hispanics from 1992-2004

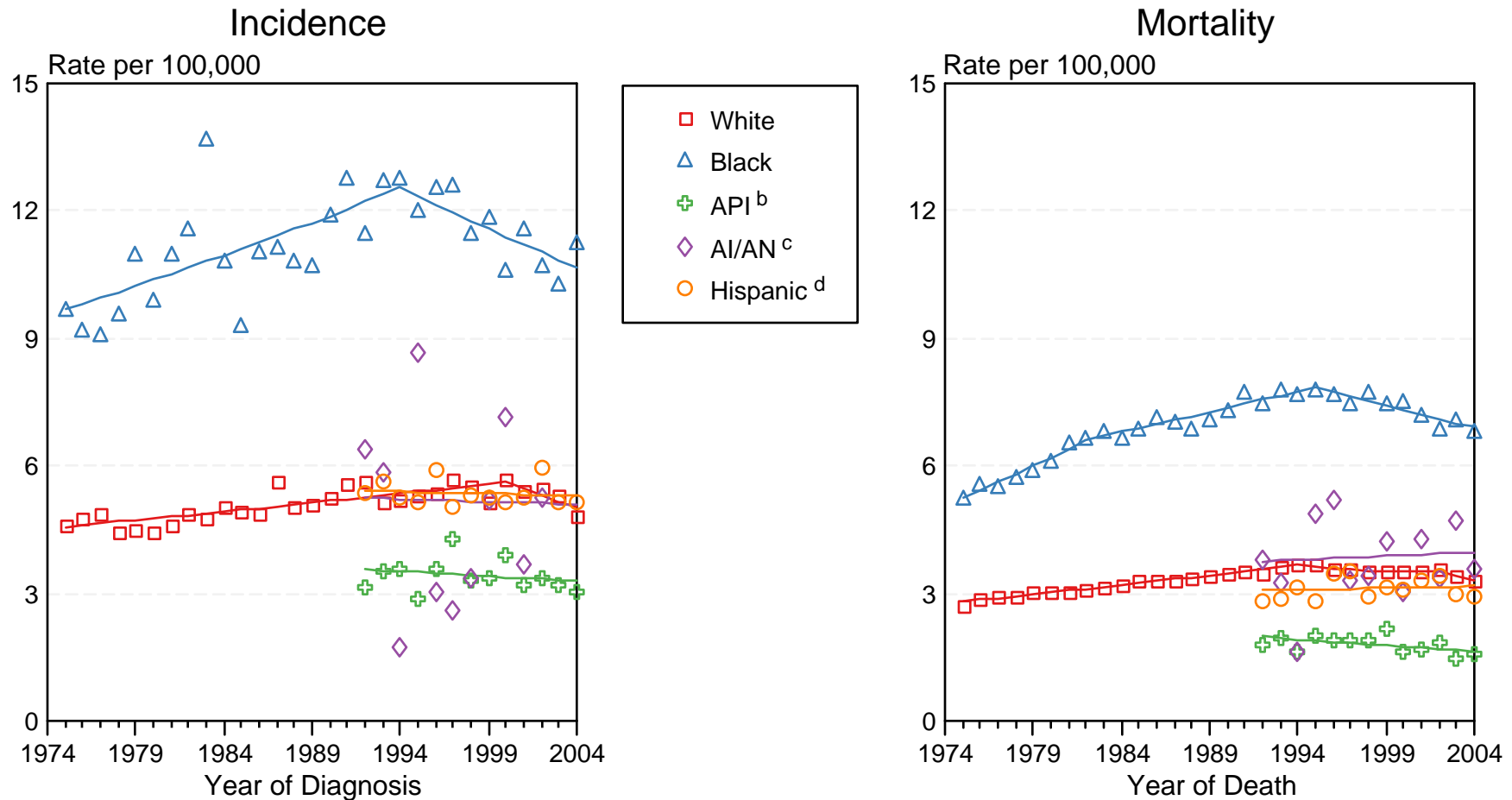


Figure XVIII-2

Source: Incidence data for whites and blacks are from the SEER 9 areas (San Francisco, Connecticut, Detroit, Hawaii, Iowa, New Mexico, Seattle, Utah, Atlanta). Incidence data for Asian/Pacific Islanders, American Indians/Alaska Natives and Hispanics are from the SEER 13 Areas (SEER 9 Areas, San Jose-Monterey, Los Angeles, Alaska Native Registry and Rural Georgia). Mortality data are from NCHS public use data file for the total US.

^a Rates are age-adjusted to the 2000 US Std Population (19 age groups - Census P25-1103).

Regression lines are calculated using the Joinpoint Regression Program Version 3.0, April 2005, National Cancer Institute.

^b API = Asian/Pacific Islander.

^c AI/AN = American Indian/Alaska Native. Rates for American Indian/Alaska Native are based on the CHSDA(Contract Health Service Delivery Area) counties.

^d Hispanic is not mutually exclusive from whites, blacks, Asian/Pacific Islanders, and American Indians/Alaska Natives. Incidence data for Hispanics are based on NHIA and exclude cases from the Alaska Native Registry. Mortality data for Hispanics exclude cases from Connecticut, Maine, Maryland, Minnesota, New Hampshire, New York, North Dakota, Oklahoma, and Vermont.