

Table XIII-1

LEUKEMIA

TRENDS IN SEER INCIDENCE^a AND U.S. MORTALITY^b USING THE JOINPOINT REGRESSION PROGRAM, 1975-2004
WITH UP TO THREE JOINPOINTS BY RACE AND SEX

| | | <u>Joinpoint Segment 1</u> | | <u>Joinpoint Segment 2</u> | | <u>Joinpoint Segment 3</u> | | <u>Joinpoint Segment 4</u> | |
|--|-----------------|----------------------------|-------|----------------------------|-------|----------------------------|-------|----------------------------|-----|
| | | Year | APC | Year | APC | Year | APC | Year | APC |
| <u>SEER Cancer Incidence^a</u> | | | | | | | | | |
| All Races | Male and Female | 1975-2001 | 0.0 | 2001-2004 | -2.8* | | | | |
| All Races | Male | 1975-2001 | -0.1 | 2001-2004 | -3.2 | | | | |
| All Races | Female | 1975-2004 | -0.1 | | | | | | |
| White | Male and Female | 1975-2001 | 0.2* | 2001-2004 | -3.1* | | | | |
| White | Male | 1975-2002 | 0.0 | 2002-2004 | -5.8 | | | | |
| White | Female | 1975-2001 | 0.2* | 2001-2004 | -2.8 | | | | |
| Black | Male and Female | 1975-2004 | -0.5* | | | | | | |
| Black | Male | 1975-2004 | -0.5* | | | | | | |
| Black | Female | 1975-2004 | -0.5 | | | | | | |
| <u>SEER Delay-Adjusted Incidence^a</u> | | | | | | | | | |
| All Races | Male and Female | 1975-2004 | 0.2* | | | | | | |
| All Races | Male | 1975-2004 | 0.1 | | | | | | |
| All Races | Female | 1975-2004 | 0.2* | | | | | | |
| White | Male and Female | 1975-2004 | 0.4* | | | | | | |
| White | Male | 1975-2004 | 0.3* | | | | | | |
| White | Female | 1975-2004 | 0.4* | | | | | | |
| Black | Male and Female | 1975-2004 | -0.1 | | | | | | |
| Black | Male | 1975-2004 | -0.1 | | | | | | |
| Black | Female | 1975-2004 | -0.1 | | | | | | |
| <u>U.S. Cancer Mortality^b</u> | | | | | | | | | |
| All Races | Male and Female | 1975-1995 | -0.2* | 1995-2004 | -0.8* | | | | |
| All Races | Male | 1975-1995 | -0.2* | 1995-2004 | -0.8* | | | | |
| All Races | Female | 1975-1980 | 0.8 | 1980-2001 | -0.4* | 2001-2004 | -2.4* | | |
| White | Male and Female | 1975-2001 | -0.3* | 2001-2004 | -1.7* | | | | |
| White | Male | 1975-2002 | -0.3* | 2002-2004 | -2.3 | | | | |
| White | Female | 1975-1980 | 0.6 | 1980-2001 | -0.4* | 2001-2004 | -2.3* | | |
| Black | Male and Female | 1975-1991 | 0.6* | 1991-2004 | -1.0* | | | | |
| Black | Male | 1975-1991 | 1.0* | 1991-2004 | -1.2* | | | | |
| Black | Female | 1975-1983 | 1.4* | 1983-2004 | -0.4* | | | | |

Joinpoint Regression Program Version 3.0, April 2005, National Cancer Institute. (<http://srab.cancer.gov/joinpoint/>).

The APC is the Annual Percent Change based on rates age-adjusted to the 2000 US Std Population (19 age groups - Census P25-1130).

^a Trends are from the SEER 9 areas (San Francisco, Connecticut, Detroit, Hawaii, Iowa, New Mexico, Seattle, Utah, and Atlanta).

^b Trends are from the NCHS public use data file for the total US.

* The APC is significantly different from zero (p<.05).

Table XIII-2

LEUKEMIAAGE ADJUSTED SEER INCIDENCE^a RATES BY YEAR, RACE AND SEX

| | <u>All Races</u> | | | <u>Whites</u> | | | <u>Blacks</u> | | |
|---------------------------|------------------|--------------|----------------|---------------|--------------|----------------|---------------|--------------|----------------|
| | <u>Total</u> | <u>Males</u> | <u>Females</u> | <u>Total</u> | <u>Males</u> | <u>Females</u> | <u>Total</u> | <u>Males</u> | <u>Females</u> |
| <u>AGE-ADJUSTED RATES</u> | | | | | | | | | |
| <u>YEAR OF DIAGNOSIS:</u> | | | | | | | | | |
| 1975 | 12.8 | 16.9 | 9.9 | 13.1 | 17.5 | 10.1 | 11.5 | 16.2 | 8.5 |
| 1976 | 13.5 | 18.5 | 10.2 | 13.8 | 19.1 | 10.3 | 11.3 | 14.2 | 9.4 |
| 1977 | 12.7 | 16.3 | 10.2 | 13.2 | 17.0 | 10.5 | 10.2 | 13.6 | 7.7 |
| 1978 | 12.9 | 17.2 | 9.8 | 13.5 | 18.3 | 10.2 | 9.2 | 11.4 | 7.5 |
| 1979 | 12.6 | 16.8 | 9.7 | 13.0 | 17.5 | 10.0 | 10.6 | 13.6 | 8.6 |
| 1980 | 12.9 | 17.4 | 9.9 | 13.3 | 17.9 | 10.1 | 12.2 | 16.0 | 9.5 |
| 1981 | 12.4 | 16.5 | 9.6 | 12.7 | 17.1 | 9.8 | 12.2 | 14.5 | 10.3 |
| 1982 | 13.2 | 18.3 | 9.7 | 13.5 | 18.8 | 10.0 | 10.7 | 15.2 | 7.9 |
| 1983 | 13.1 | 17.8 | 9.9 | 13.5 | 18.4 | 10.1 | 12.5 | 16.0 | 10.1 |
| 1984 | 13.0 | 17.1 | 10.1 | 13.4 | 17.9 | 10.3 | 10.7 | 11.9 | 9.6 |
| 1985 | 13.3 | 17.7 | 10.4 | 13.7 | 18.2 | 10.6 | 12.2 | 16.8 | 9.3 |
| 1986 | 12.8 | 17.5 | 9.5 | 13.4 | 18.3 | 9.9 | 10.2 | 13.1 | 8.1 |
| 1987 | 13.3 | 17.7 | 10.3 | 13.8 | 18.4 | 10.6 | 12.6 | 17.6 | 9.3 |
| 1988 | 12.9 | 17.5 | 9.7 | 13.4 | 18.2 | 9.9 | 11.6 | 14.0 | 9.4 |
| 1989 | 13.4 | 17.6 | 10.4 | 13.9 | 18.2 | 10.9 | 11.3 | 15.9 | 8.0 |
| 1990 | 12.8 | 17.2 | 9.7 | 13.4 | 18.1 | 10.1 | 11.3 | 14.8 | 8.8 |
| 1991 | 13.0 | 16.8 | 10.2 | 13.6 | 17.7 | 10.5 | 10.9 | 12.0 | 10.2 |
| 1992 | 13.0 | 17.4 | 9.7 | 13.5 | 18.5 | 9.9 | 10.7 | 13.9 | 8.4 |
| 1993 | 13.0 | 16.9 | 10.0 | 13.5 | 17.8 | 10.3 | 11.6 | 15.1 | 9.1 |
| 1994 | 12.9 | 16.8 | 10.0 | 13.5 | 17.7 | 10.5 | 9.8 | 12.6 | 7.8 |
| 1995 | 13.4 | 17.6 | 10.3 | 14.2 | 18.6 | 11.0 | 9.7 | 13.4 | 7.2 |
| 1996 | 12.9 | 16.7 | 10.2 | 13.5 | 17.4 | 10.6 | 10.7 | 13.9 | 8.7 |
| 1997 | 12.9 | 17.3 | 9.8 | 13.7 | 18.3 | 10.4 | 10.3 | 13.8 | 8.1 |
| 1998 | 12.9 | 16.8 | 10.1 | 13.7 | 17.7 | 10.7 | 9.7 | 14.1 | 7.0 |
| 1999 | 12.5 | 16.7 | 9.4 | 13.1 | 17.5 | 9.8 | 10.0 | 13.6 | 7.8 |
| 2000 | 13.1 | 16.9 | 10.2 | 13.7 | 17.8 | 10.6 | 11.3 | 13.3 | 9.8 |
| 2001 | 13.4 | 17.5 | 10.4 | 14.3 | 18.4 | 11.1 | 11.1 | 13.5 | 9.4 |
| 2002 | 12.5 | 16.5 | 9.5 | 13.5 | 17.8 | 10.2 | 8.0 | 10.2 | 6.4 |
| 2003 | 12.4 | 16.2 | 9.4 | 13.0 | 17.1 | 9.8 | 10.0 | 12.8 | 7.9 |
| 2004 | 12.0 | 15.4 | 9.5 | 12.5 | 15.9 | 9.8 | 10.4 | 13.8 | 8.1 |
| 1975-2004 | 12.9 | 17.0 | 9.9 | 13.4 | 17.8 | 10.3 | 10.7 | 13.9 | 8.5 |

^a SEER 9 areas (San Francisco, Connecticut, Detroit, Hawaii, Iowa, New Mexico, Seattle, Utah, and Atlanta). Rates are per 100,000 and are age-adjusted to the 2000 US Std Population (19 age groups - Census P25-1130).

- Statistic not shown. Rate based on less than 16 cases for the time interval.

Table XIII-3
ACUTE LYMPHOCYTIC LEUKEMIA

AGE ADJUSTED SEER INCIDENCE^a RATES BY YEAR, RACE AND SEX

| | <u>All Races</u> | | | <u>Whites</u> | | | <u>Blacks</u> | | |
|---------------------------|------------------|--------------|----------------|---------------|--------------|----------------|---------------|--------------|----------------|
| | <u>Total</u> | <u>Males</u> | <u>Females</u> | <u>Total</u> | <u>Males</u> | <u>Females</u> | <u>Total</u> | <u>Males</u> | <u>Females</u> |
| <u>AGE-ADJUSTED RATES</u> | | | | | | | | | |
| <u>YEAR OF DIAGNOSIS:</u> | | | | | | | | | |
| 1975 | 0.9 | 1.1 | 0.8 | 1.0 | 1.2 | 0.8 | - | - | - |
| 1976 | 1.1 | 1.3 | 0.9 | 1.1 | 1.3 | 0.9 | 0.8 | - | - |
| 1977 | 1.1 | 1.3 | 0.9 | 1.2 | 1.4 | 1.0 | - | - | - |
| 1978 | 1.0 | 1.2 | 0.8 | 1.1 | 1.3 | 0.9 | - | - | - |
| 1979 | 1.0 | 1.2 | 0.9 | 1.1 | 1.2 | 1.0 | - | - | - |
| 1980 | 1.1 | 1.4 | 0.9 | 1.2 | 1.5 | 0.9 | 0.7 | - | - |
| 1981 | 1.2 | 1.3 | 1.2 | 1.3 | 1.4 | 1.2 | 1.0 | - | - |
| 1982 | 1.2 | 1.5 | 1.0 | 1.3 | 1.6 | 1.0 | - | - | - |
| 1983 | 1.3 | 1.5 | 1.1 | 1.4 | 1.7 | 1.2 | 0.8 | - | - |
| 1984 | 1.3 | 1.5 | 1.2 | 1.3 | 1.5 | 1.2 | 0.9 | - | - |
| 1985 | 1.3 | 1.5 | 1.1 | 1.4 | 1.6 | 1.1 | - | - | - |
| 1986 | 1.3 | 1.7 | 1.0 | 1.4 | 1.8 | 1.0 | 0.8 | - | - |
| 1987 | 1.3 | 1.5 | 1.2 | 1.3 | 1.5 | 1.2 | 0.9 | - | 1.1 |
| 1988 | 1.4 | 1.8 | 1.1 | 1.4 | 1.8 | 1.1 | 1.0 | - | - |
| 1989 | 1.6 | 1.8 | 1.4 | 1.7 | 1.9 | 1.5 | 1.0 | - | - |
| 1990 | 1.4 | 1.7 | 1.2 | 1.5 | 1.8 | 1.3 | 0.6 | - | - |
| 1991 | 1.4 | 1.7 | 1.1 | 1.5 | 1.9 | 1.1 | 0.9 | - | - |
| 1992 | 1.4 | 1.6 | 1.1 | 1.4 | 1.7 | 1.1 | 0.9 | - | - |
| 1993 | 1.3 | 1.4 | 1.1 | 1.4 | 1.6 | 1.1 | 0.8 | - | - |
| 1994 | 1.2 | 1.5 | 0.9 | 1.3 | 1.6 | 1.0 | 0.7 | - | - |
| 1995 | 1.5 | 1.8 | 1.2 | 1.6 | 1.9 | 1.3 | 1.0 | 1.3 | - |
| 1996 | 1.4 | 1.6 | 1.2 | 1.4 | 1.7 | 1.2 | 0.8 | - | - |
| 1997 | 1.3 | 1.5 | 1.2 | 1.5 | 1.6 | 1.3 | 0.8 | 0.9 | - |
| 1998 | 1.5 | 1.6 | 1.3 | 1.6 | 1.7 | 1.4 | 0.9 | 1.2 | - |
| 1999 | 1.3 | 1.5 | 1.1 | 1.4 | 1.6 | 1.2 | 0.7 | - | - |
| 2000 | 1.4 | 1.5 | 1.3 | 1.5 | 1.6 | 1.5 | 0.9 | - | - |
| 2001 | 1.4 | 1.6 | 1.3 | 1.6 | 1.8 | 1.3 | 0.7 | - | - |
| 2002 | 1.5 | 1.8 | 1.2 | 1.6 | 2.0 | 1.3 | 0.6 | - | - |
| 2003 | 1.4 | 1.6 | 1.2 | 1.4 | 1.7 | 1.3 | 0.8 | 1.0 | - |
| 2004 | 1.5 | 1.6 | 1.3 | 1.6 | 1.8 | 1.3 | 1.0 | - | 1.3 |
| 1975-2004 | 1.3 | 1.5 | 1.1 | 1.4 | 1.6 | 1.2 | 0.8 | 0.8 | 0.7 |

^a SEER 9 areas (San Francisco, Connecticut, Detroit, Hawaii, Iowa, New Mexico, Seattle, Utah, and Atlanta). Rates are per 100,000 and are age-adjusted to the 2000 US Std Population (19 age groups - Census P25-1130).
 - Statistic not shown. Rate based on less than 16 cases for the time interval.

Table XIII-4
 CHRONIC LYMPHOCYTIC LEUKEMIA

AGE ADJUSTED SEER INCIDENCE^a RATES BY YEAR, RACE AND SEX

| | All Races | | | Whites | | | Blacks | | |
|---------------------------|-----------|-------|---------|--------|-------|---------|--------|-------|---------|
| | Total | Males | Females | Total | Males | Females | Total | Males | Females |
| <u>AGE-ADJUSTED RATES</u> | | | | | | | | | |
| YEAR OF DIAGNOSIS: | | | | | | | | | |
| 1975 | 4.3 | 5.9 | 3.3 | 4.5 | 6.1 | 3.4 | 4.8 | 6.9 | 3.2 |
| 1976 | 4.6 | 6.8 | 3.1 | 4.8 | 7.2 | 3.2 | 4.3 | 6.6 | 3.0 |
| 1977 | 4.2 | 5.7 | 3.1 | 4.4 | 6.0 | 3.3 | 3.8 | 5.8 | 2.5 |
| 1978 | 4.5 | 5.9 | 3.4 | 4.7 | 6.4 | 3.6 | 3.3 | 3.6 | 3.1 |
| 1979 | 4.0 | 5.7 | 2.9 | 4.3 | 6.1 | 3.1 | 3.1 | 4.2 | - |
| 1980 | 4.5 | 6.3 | 3.3 | 4.7 | 6.5 | 3.5 | 4.5 | 7.1 | 2.9 |
| 1981 | 4.3 | 6.3 | 2.9 | 4.5 | 6.6 | 3.0 | 3.8 | 5.4 | 2.4 |
| 1982 | 4.3 | 6.2 | 3.0 | 4.5 | 6.4 | 3.2 | 3.8 | 6.7 | - |
| 1983 | 4.5 | 6.4 | 3.1 | 4.7 | 6.8 | 3.2 | 4.2 | 6.1 | 3.0 |
| 1984 | 4.4 | 6.3 | 3.1 | 4.7 | 6.8 | 3.3 | 3.5 | 4.5 | 2.7 |
| 1985 | 4.4 | 6.1 | 3.3 | 4.7 | 6.5 | 3.5 | 4.1 | 6.1 | 2.9 |
| 1986 | 4.5 | 6.3 | 3.2 | 4.8 | 6.8 | 3.5 | 2.8 | 4.2 | - |
| 1987 | 4.6 | 6.7 | 3.1 | 4.9 | 7.2 | 3.3 | 4.0 | 6.1 | 2.5 |
| 1988 | 4.5 | 6.4 | 3.1 | 4.7 | 6.8 | 3.2 | 4.4 | 5.3 | 3.5 |
| 1989 | 4.6 | 6.4 | 3.4 | 4.9 | 6.8 | 3.6 | 3.9 | 5.3 | 2.9 |
| 1990 | 4.5 | 6.2 | 3.3 | 4.8 | 6.7 | 3.5 | 4.5 | 6.1 | 3.4 |
| 1991 | 4.5 | 6.1 | 3.4 | 4.9 | 6.7 | 3.6 | 3.4 | 3.6 | 3.2 |
| 1992 | 4.5 | 6.6 | 3.1 | 4.9 | 7.3 | 3.4 | 3.2 | 5.0 | 2.1 |
| 1993 | 4.4 | 6.0 | 3.1 | 4.6 | 6.4 | 3.3 | 4.4 | 6.6 | 2.9 |
| 1994 | 4.4 | 5.9 | 3.3 | 4.8 | 6.4 | 3.6 | 3.2 | 4.1 | 2.3 |
| 1995 | 4.4 | 6.3 | 3.0 | 4.8 | 6.8 | 3.3 | 3.3 | 5.2 | 2.1 |
| 1996 | 4.5 | 6.1 | 3.4 | 4.9 | 6.5 | 3.7 | 3.5 | 5.4 | 2.2 |
| 1997 | 4.3 | 5.8 | 3.1 | 4.6 | 6.3 | 3.4 | 3.3 | 4.9 | 2.4 |
| 1998 | 4.0 | 5.6 | 2.8 | 4.3 | 6.1 | 3.1 | 2.7 | 3.4 | 2.2 |
| 1999 | 3.9 | 5.7 | 2.5 | 4.2 | 6.1 | 2.8 | 3.4 | 5.5 | 2.2 |
| 2000 | 4.0 | 5.7 | 2.8 | 4.5 | 6.3 | 3.0 | 3.0 | 3.8 | 2.4 |
| 2001 | 4.5 | 6.3 | 3.1 | 4.9 | 6.9 | 3.4 | 3.3 | 4.1 | 2.7 |
| 2002 | 4.2 | 5.9 | 2.9 | 4.7 | 6.6 | 3.2 | 2.3 | 3.1 | 1.7 |
| 2003 | 4.4 | 6.2 | 3.1 | 4.8 | 6.7 | 3.3 | 3.3 | 4.6 | 2.3 |
| 2004 | 4.0 | 5.5 | 2.9 | 4.3 | 5.8 | 3.2 | 3.0 | 4.8 | 1.8 |
| 1975-2004 | 4.3 | 6.1 | 3.1 | 4.7 | 6.5 | 3.3 | 3.5 | 5.0 | 2.5 |

^a SEER 9 areas (San Francisco, Connecticut, Detroit, Hawaii, Iowa, New Mexico, Seattle, Utah, and Atlanta). Rates are per 100,000 and are age-adjusted to the 2000 US Std Population (19 age groups - Census P25-1130).
 - Statistic not shown. Rate based on less than 16 cases for the time interval.

Table XIII-5
ACUTE MYELOID LEUKEMIA

AGE ADJUSTED SEER INCIDENCE^a RATES BY YEAR, RACE AND SEX

| | All Races | | | Whites | | | Blacks | | |
|---------------------------|-----------|-------|---------|--------|-------|---------|--------|-------|---------|
| | Total | Males | Females | Total | Males | Females | Total | Males | Females |
| <u>AGE-ADJUSTED RATES</u> | | | | | | | | | |
| YEAR OF DIAGNOSIS: | | | | | | | | | |
| 1975 | 3.4 | 4.2 | 3.0 | 3.5 | 4.3 | 3.0 | 2.5 | 3.4 | 2.0 |
| 1976 | 3.5 | 4.4 | 2.9 | 3.5 | 4.5 | 2.9 | 2.6 | - | 2.6 |
| 1977 | 3.5 | 4.2 | 3.1 | 3.6 | 4.4 | 3.1 | 1.9 | - | - |
| 1978 | 3.4 | 4.4 | 2.7 | 3.5 | 4.6 | 2.8 | 2.7 | 3.5 | 2.1 |
| 1979 | 3.3 | 4.1 | 2.8 | 3.4 | 4.2 | 2.9 | 3.4 | 3.5 | 3.4 |
| 1980 | 3.1 | 4.1 | 2.4 | 3.2 | 4.1 | 2.5 | 2.9 | 3.3 | 2.5 |
| 1981 | 3.2 | 4.0 | 2.6 | 3.2 | 4.1 | 2.7 | 3.1 | 3.2 | 2.9 |
| 1982 | 3.4 | 4.8 | 2.6 | 3.5 | 4.9 | 2.6 | 2.5 | 3.2 | 2.1 |
| 1983 | 3.2 | 4.2 | 2.5 | 3.2 | 4.3 | 2.4 | 2.9 | 3.0 | 2.9 |
| 1984 | 3.3 | 4.1 | 2.7 | 3.4 | 4.2 | 2.8 | 2.4 | 2.1 | 2.4 |
| 1985 | 3.3 | 4.1 | 2.9 | 3.3 | 4.0 | 2.8 | 3.7 | 4.9 | 3.0 |
| 1986 | 3.0 | 3.9 | 2.4 | 2.9 | 3.9 | 2.4 | 3.2 | 4.0 | 2.7 |
| 1987 | 3.0 | 4.0 | 2.5 | 3.0 | 4.0 | 2.5 | 3.0 | 4.7 | 2.0 |
| 1988 | 3.0 | 3.8 | 2.5 | 3.1 | 3.9 | 2.5 | 2.8 | 3.1 | 2.5 |
| 1989 | 3.2 | 4.0 | 2.6 | 3.3 | 4.0 | 2.8 | 2.2 | 3.8 | - |
| 1990 | 3.0 | 3.9 | 2.4 | 3.1 | 4.0 | 2.5 | 2.5 | 3.0 | 2.1 |
| 1991 | 3.3 | 3.9 | 2.9 | 3.4 | 3.9 | 3.0 | 3.3 | 4.4 | 2.6 |
| 1992 | 3.2 | 3.9 | 2.8 | 3.3 | 4.0 | 2.7 | 3.0 | 3.0 | 3.0 |
| 1993 | 3.5 | 4.3 | 2.9 | 3.5 | 4.5 | 2.9 | 2.5 | 2.6 | 2.5 |
| 1994 | 3.5 | 4.1 | 3.0 | 3.5 | 4.2 | 3.0 | 2.9 | 3.2 | 2.7 |
| 1995 | 3.7 | 4.2 | 3.3 | 3.8 | 4.3 | 3.4 | 2.5 | 2.6 | 2.6 |
| 1996 | 3.5 | 4.3 | 2.9 | 3.5 | 4.3 | 2.9 | 3.2 | 4.1 | 2.7 |
| 1997 | 3.5 | 4.6 | 2.8 | 3.6 | 4.8 | 2.9 | 3.0 | 3.8 | 2.6 |
| 1998 | 3.9 | 4.9 | 3.2 | 4.0 | 5.1 | 3.3 | 3.1 | 4.6 | 2.1 |
| 1999 | 3.7 | 4.5 | 3.2 | 3.8 | 4.6 | 3.3 | 3.0 | 3.4 | 2.8 |
| 2000 | 4.0 | 4.9 | 3.4 | 4.0 | 4.9 | 3.4 | 4.4 | 4.9 | 4.0 |
| 2001 | 4.0 | 4.9 | 3.4 | 4.2 | 5.0 | 3.6 | 3.5 | 4.1 | 3.1 |
| 2002 | 3.6 | 4.5 | 3.0 | 3.7 | 4.7 | 3.1 | 2.9 | 3.2 | 2.7 |
| 2003 | 3.5 | 4.4 | 2.9 | 3.6 | 4.6 | 3.0 | 3.1 | 3.4 | 2.7 |
| 2004 | 3.3 | 4.0 | 2.8 | 3.4 | 4.0 | 2.9 | 3.2 | 4.0 | 2.8 |
| 1975-2004 | 3.4 | 4.3 | 2.8 | 3.5 | 4.3 | 2.9 | 3.0 | 3.6 | 2.6 |

^a SEER 9 areas (San Francisco, Connecticut, Detroit, Hawaii, Iowa, New Mexico, Seattle, Utah, and Atlanta). Rates are per 100,000 and are age-adjusted to the 2000 US Std Population (19 age groups - Census P25-1130).
- Statistic not shown. Rate based on less than 16 cases for the time interval.

Table XIII-6
CHRONIC MYELOID LEUKEMIA

AGE ADJUSTED SEER INCIDENCE^a RATES BY YEAR, RACE AND SEX

| | <u>All Races</u> | | | <u>Whites</u> | | | <u>Blacks</u> | | |
|---------------------------|------------------|--------------|----------------|---------------|--------------|----------------|---------------|--------------|----------------|
| | <u>Total</u> | <u>Males</u> | <u>Females</u> | <u>Total</u> | <u>Males</u> | <u>Females</u> | <u>Total</u> | <u>Males</u> | <u>Females</u> |
| <u>AGE-ADJUSTED RATES</u> | | | | | | | | | |
| <u>YEAR OF DIAGNOSIS:</u> | | | | | | | | | |
| 1975 | 2.0 | 2.9 | 1.3 | 2.0 | 3.0 | 1.3 | 1.9 | - | - |
| 1976 | 1.9 | 2.5 | 1.6 | 1.9 | 2.4 | 1.5 | 1.9 | 2.6 | - |
| 1977 | 1.7 | 2.1 | 1.4 | 1.7 | 2.1 | 1.4 | 1.8 | - | - |
| 1978 | 1.7 | 2.3 | 1.3 | 1.7 | 2.3 | 1.4 | 1.4 | - | - |
| 1979 | 1.9 | 2.5 | 1.4 | 1.9 | 2.5 | 1.5 | 1.9 | 2.8 | - |
| 1980 | 1.7 | 2.1 | 1.5 | 1.7 | 2.1 | 1.5 | 1.5 | - | - |
| 1981 | 1.6 | 2.0 | 1.4 | 1.6 | 1.9 | 1.4 | 2.4 | 3.0 | 1.8 |
| 1982 | 1.7 | 2.2 | 1.4 | 1.7 | 2.2 | 1.3 | 1.7 | - | 1.8 |
| 1983 | 1.7 | 2.2 | 1.3 | 1.6 | 2.1 | 1.3 | 2.5 | 3.4 | 1.8 |
| 1984 | 1.7 | 2.4 | 1.2 | 1.6 | 2.4 | 1.1 | 2.6 | 2.6 | 2.6 |
| 1985 | 2.0 | 2.8 | 1.4 | 2.0 | 2.8 | 1.5 | 2.1 | 2.9 | - |
| 1986 | 1.7 | 2.2 | 1.3 | 1.7 | 2.3 | 1.3 | 1.5 | - | - |
| 1987 | 1.9 | 2.3 | 1.6 | 1.9 | 2.4 | 1.6 | 2.1 | 2.9 | - |
| 1988 | 1.9 | 2.5 | 1.5 | 1.9 | 2.6 | 1.5 | 2.1 | 2.9 | - |
| 1989 | 1.7 | 2.2 | 1.3 | 1.7 | 2.2 | 1.3 | 2.2 | 3.1 | - |
| 1990 | 1.8 | 2.5 | 1.2 | 1.7 | 2.5 | 1.2 | 2.6 | 3.5 | 2.0 |
| 1991 | 1.9 | 2.4 | 1.5 | 1.9 | 2.6 | 1.4 | 1.6 | - | 1.9 |
| 1992 | 1.8 | 2.2 | 1.5 | 1.8 | 2.2 | 1.5 | 1.5 | 1.7 | - |
| 1993 | 1.9 | 2.5 | 1.5 | 2.0 | 2.5 | 1.6 | 2.3 | 3.6 | - |
| 1994 | 1.9 | 2.5 | 1.4 | 1.9 | 2.5 | 1.5 | 1.7 | 2.5 | - |
| 1995 | 1.9 | 2.5 | 1.4 | 2.0 | 2.7 | 1.4 | 1.5 | 2.0 | - |
| 1996 | 1.8 | 2.4 | 1.3 | 1.8 | 2.5 | 1.3 | 2.0 | 2.4 | 1.8 |
| 1997 | 1.9 | 2.7 | 1.3 | 1.9 | 2.7 | 1.3 | 1.7 | 2.5 | - |
| 1998 | 1.6 | 1.9 | 1.4 | 1.7 | 1.9 | 1.5 | 1.5 | 2.3 | - |
| 1999 | 1.8 | 2.5 | 1.3 | 1.8 | 2.4 | 1.3 | 1.7 | 2.2 | 1.3 |
| 2000 | 1.8 | 2.3 | 1.3 | 1.8 | 2.3 | 1.4 | 1.5 | 1.7 | 1.3 |
| 2001 | 1.7 | 2.2 | 1.3 | 1.8 | 2.2 | 1.4 | 1.8 | 2.6 | 1.2 |
| 2002 | 1.5 | 1.9 | 1.2 | 1.6 | 2.0 | 1.3 | 0.9 | - | - |
| 2003 | 1.5 | 2.0 | 1.1 | 1.5 | 2.1 | 1.1 | 1.2 | 1.8 | - |
| 2004 | 1.6 | 2.2 | 1.1 | 1.6 | 2.3 | 1.1 | 1.3 | 1.9 | - |
| 1975-2004 | 1.8 | 2.3 | 1.3 | 1.8 | 2.3 | 1.4 | 1.8 | 2.3 | 1.4 |

^a SEER 9 areas (San Francisco, Connecticut, Detroit, Hawaii, Iowa, New Mexico, Seattle, Utah, and Atlanta). Rates are per 100,000 and are age-adjusted to the 2000 US Std Population (19 age groups - Census P25-1130).
 - Statistic not shown. Rate based on less than 16 cases for the time interval.

Table XIII-7

LEUKEMIAAGE-ADJUSTED U.S. DEATH^a RATES BY YEAR, RACE AND SEX

| | <u>All Races</u> | | | <u>Whites</u> | | | <u>Blacks</u> | | |
|---------------------------|------------------|--------------|----------------|---------------|--------------|----------------|---------------|--------------|----------------|
| | <u>Total</u> | <u>Males</u> | <u>Females</u> | <u>Total</u> | <u>Males</u> | <u>Females</u> | <u>Total</u> | <u>Males</u> | <u>Females</u> |
| <u>AGE-ADJUSTED RATES</u> | | | | | | | | | |
| <u>YEAR OF DEATH:</u> | | | | | | | | | |
| 1975 | 8.1 | 11.0 | 6.2 | 8.3 | 11.3 | 6.3 | 6.6 | 8.6 | 5.1 |
| 1976 | 8.1 | 10.9 | 6.2 | 8.3 | 11.2 | 6.3 | 6.8 | 8.5 | 5.5 |
| 1977 | 8.1 | 10.8 | 6.3 | 8.3 | 11.1 | 6.3 | 6.8 | 8.8 | 5.5 |
| 1978 | 8.0 | 10.8 | 6.1 | 8.2 | 11.1 | 6.3 | 6.7 | 9.2 | 4.9 |
| 1979 | 8.3 | 11.1 | 6.4 | 8.4 | 11.4 | 6.5 | 7.0 | 8.9 | 5.7 |
| 1980 | 8.4 | 11.2 | 6.5 | 8.5 | 11.5 | 6.6 | 7.0 | 9.1 | 5.7 |
| 1981 | 8.1 | 10.9 | 6.2 | 8.2 | 11.2 | 6.3 | 7.1 | 8.9 | 5.9 |
| 1982 | 8.2 | 11.0 | 6.3 | 8.3 | 11.3 | 6.4 | 7.1 | 9.4 | 5.7 |
| 1983 | 8.1 | 10.9 | 6.3 | 8.2 | 11.2 | 6.3 | 7.2 | 9.2 | 5.9 |
| 1984 | 8.1 | 10.7 | 6.4 | 8.2 | 10.9 | 6.5 | 7.1 | 9.2 | 5.7 |
| 1985 | 8.1 | 10.8 | 6.3 | 8.2 | 11.0 | 6.4 | 7.1 | 9.6 | 5.4 |
| 1986 | 8.0 | 10.7 | 6.2 | 8.1 | 11.0 | 6.2 | 7.3 | 9.3 | 5.9 |
| 1987 | 7.8 | 10.3 | 6.1 | 7.9 | 10.5 | 6.2 | 7.2 | 9.4 | 5.9 |
| 1988 | 7.8 | 10.6 | 6.0 | 8.0 | 10.8 | 6.1 | 7.2 | 9.8 | 5.6 |
| 1989 | 8.0 | 10.6 | 6.2 | 8.1 | 10.8 | 6.3 | 7.4 | 10.3 | 5.5 |
| 1990 | 8.0 | 10.7 | 6.2 | 8.1 | 10.9 | 6.3 | 7.4 | 10.0 | 5.8 |
| 1991 | 8.0 | 10.5 | 6.3 | 8.1 | 10.6 | 6.4 | 7.4 | 10.0 | 5.8 |
| 1992 | 8.0 | 10.7 | 6.1 | 8.1 | 10.9 | 6.2 | 7.2 | 9.4 | 5.7 |
| 1993 | 7.9 | 10.7 | 6.1 | 8.0 | 10.8 | 6.2 | 7.4 | 9.8 | 5.8 |
| 1994 | 7.9 | 10.6 | 6.0 | 8.0 | 10.8 | 6.1 | 7.1 | 9.6 | 5.5 |
| 1995 | 7.9 | 10.8 | 6.0 | 8.0 | 11.0 | 6.0 | 7.2 | 9.8 | 5.5 |
| 1996 | 7.8 | 10.5 | 6.1 | 8.0 | 10.7 | 6.1 | 7.5 | 10.1 | 5.9 |
| 1997 | 7.7 | 10.4 | 5.9 | 7.9 | 10.7 | 6.0 | 6.8 | 9.2 | 5.3 |
| 1998 | 7.6 | 10.1 | 5.8 | 7.7 | 10.3 | 5.9 | 7.0 | 9.4 | 5.6 |
| 1999 | 7.7 | 10.2 | 6.0 | 7.9 | 10.5 | 6.1 | 6.7 | 8.8 | 5.4 |
| 2000 | 7.7 | 10.3 | 5.9 | 7.9 | 10.5 | 6.0 | 6.7 | 9.1 | 5.3 |
| 2001 | 7.6 | 10.1 | 5.9 | 7.8 | 10.4 | 6.0 | 6.7 | 8.8 | 5.4 |
| 2002 | 7.5 | 10.1 | 5.7 | 7.7 | 10.4 | 5.8 | 6.7 | 8.8 | 5.4 |
| 2003 | 7.4 | 9.9 | 5.6 | 7.6 | 10.3 | 5.7 | 6.5 | 8.4 | 5.3 |
| 2004 | 7.2 | 9.7 | 5.5 | 7.4 | 9.9 | 5.6 | 6.7 | 8.8 | 5.3 |
| 1975-2004 | 7.9 | 10.6 | 6.1 | 8.0 | 10.8 | 6.2 | 7.0 | 9.2 | 5.6 |

^a NCHS public use data file for the total US. Rates are per 100,000 and are age-adjusted to the 2000 US Std Population (19 age groups - Census P25-1130).

- Statistic not shown. Rate based on less than 16 cases for the time interval.

Table XIII-8
LEUKEMIASEER INCIDENCE^a AND U.S. DEATH^b RATES, AGE-ADJUSTED AND AGE-SPECIFIC RATES, BY RACE AND SEX

| | All Races | | | Whites | | | Blacks | | |
|---------------------------------------|-----------|-------|---------|--------|-------|---------|--------|-------|---------|
| | Total | Males | Females | Total | Males | Females | Total | Males | Females |
| <u>SEER INCIDENCE</u> | | | | | | | | | |
| <u>AGE AT DIAGNOSIS</u> | | | | | | | | | |
| AGE-ADJUSTED RATES, 2000-2004 | | | | | | | | | |
| All ages | 12.3 | 16.0 | 9.5 | 12.8 | 16.7 | 9.9 | 10.2 | 13.2 | 8.1 |
| Under 65 | 6.1 | 7.2 | 4.9 | 6.3 | 7.5 | 5.1 | 5.1 | 6.3 | 4.1 |
| 65 and over | 55.5 | 76.6 | 41.3 | 58.0 | 80.2 | 42.9 | 45.3 | 60.4 | 36.0 |
| All ages(IARC world std) ^c | 8.9 | 11.1 | 7.0 | 9.2 | 11.6 | 7.3 | 7.2 | 9.1 | 5.7 |
| AGE-SPECIFIC RATES, 2000-2004 | | | | | | | | | |
| <1 | 4.4 | 4.4 | 4.5 | 4.6 | 4.6 | 4.5 | 3.6 | - | - |
| 1-4 | 8.9 | 9.9 | 7.8 | 9.6 | 10.7 | 8.5 | 4.0 | 4.7 | 3.2 |
| 5-9 | 3.9 | 4.1 | 3.8 | 4.2 | 4.4 | 4.0 | 2.3 | 2.2 | 2.4 |
| 10-14 | 2.9 | 3.1 | 2.6 | 3.0 | 3.2 | 2.7 | 1.9 | 2.2 | 1.7 |
| 15-19 | 3.0 | 3.7 | 2.2 | 3.2 | 4.1 | 2.2 | 2.0 | 2.1 | 1.9 |
| 20-24 | 2.3 | 2.8 | 1.8 | 2.5 | 2.9 | 2.0 | 1.8 | 2.1 | 1.4 |
| 25-29 | 2.4 | 2.7 | 2.0 | 2.4 | 2.8 | 2.1 | 2.2 | 2.9 | 1.6 |
| 30-34 | 3.1 | 3.6 | 2.6 | 3.1 | 3.5 | 2.6 | 3.2 | 3.7 | 2.7 |
| 35-39 | 3.6 | 4.1 | 3.2 | 3.7 | 4.1 | 3.3 | 3.3 | 4.0 | 2.7 |
| 40-44 | 4.7 | 5.4 | 3.9 | 4.7 | 5.4 | 3.9 | 4.6 | 5.7 | 3.6 |
| 45-49 | 6.9 | 8.2 | 5.7 | 7.0 | 8.2 | 5.9 | 7.0 | 8.5 | 5.8 |
| 50-54 | 10.1 | 12.3 | 8.0 | 10.3 | 12.5 | 8.3 | 9.2 | 12.4 | 6.5 |
| 55-59 | 16.0 | 20.3 | 12.0 | 16.5 | 21.0 | 12.2 | 14.6 | 18.8 | 11.2 |
| 60-64 | 23.6 | 30.5 | 17.3 | 24.4 | 31.4 | 17.9 | 21.1 | 28.1 | 15.5 |
| 65-69 | 35.5 | 46.4 | 26.1 | 37.3 | 48.4 | 27.6 | 29.6 | 39.9 | 21.8 |
| 70-74 | 47.2 | 64.8 | 33.2 | 49.3 | 67.9 | 34.2 | 41.2 | 55.3 | 31.5 |
| 75-79 | 63.9 | 88.2 | 46.8 | 66.6 | 91.6 | 48.9 | 51.3 | 70.9 | 39.2 |
| 80-84 | 74.0 | 103.2 | 55.8 | 77.5 | 108.4 | 58.2 | 56.9 | 76.7 | 46.1 |
| 85+ | 81.0 | 116.4 | 65.0 | 84.3 | 123.7 | 66.8 | 64.8 | 78.9 | 59.2 |
| <u>U.S. MORTALITY</u> | | | | | | | | | |
| <u>AGE AT DEATH</u> | | | | | | | | | |
| AGE-ADJUSTED RATES, 2000-2004 | | | | | | | | | |
| All ages | 7.5 | 10.0 | 5.7 | 7.7 | 10.3 | 5.8 | 6.7 | 8.8 | 5.3 |
| Under 65 | 2.4 | 2.9 | 2.0 | 2.4 | 2.9 | 2.0 | 2.6 | 3.2 | 2.1 |
| 65 and over | 42.6 | 59.5 | 31.6 | 44.1 | 61.6 | 32.6 | 34.7 | 47.5 | 27.3 |
| All ages(IARC world std) ^c | 4.5 | 5.8 | 3.4 | 4.6 | 5.9 | 3.5 | 4.2 | 5.4 | 3.3 |
| AGE-SPECIFIC RATES, 2000-2004 | | | | | | | | | |
| <1 | 0.7 | 0.6 | 0.8 | 0.8 | 0.6 | 0.9 | - | - | - |
| 1-4 | 0.8 | 0.9 | 0.8 | 0.9 | 0.9 | 0.8 | 0.6 | 0.7 | 0.5 |
| 5-9 | 0.8 | 0.8 | 0.7 | 0.8 | 0.9 | 0.7 | 0.6 | 0.7 | 0.5 |
| 10-14 | 0.8 | 0.9 | 0.7 | 0.8 | 0.9 | 0.7 | 0.7 | 0.9 | 0.6 |
| 15-19 | 1.1 | 1.3 | 0.8 | 1.1 | 1.3 | 0.8 | 1.0 | 1.2 | 0.8 |
| 20-24 | 1.1 | 1.4 | 0.9 | 1.2 | 1.4 | 0.9 | 1.0 | 1.2 | 0.8 |
| 25-29 | 1.1 | 1.2 | 0.9 | 1.1 | 1.2 | 0.9 | 1.2 | 1.3 | 1.1 |
| 30-34 | 1.2 | 1.5 | 1.0 | 1.2 | 1.5 | 1.0 | 1.5 | 1.9 | 1.1 |
| 35-39 | 1.5 | 1.6 | 1.4 | 1.5 | 1.6 | 1.4 | 1.8 | 2.1 | 1.5 |
| 40-44 | 1.9 | 2.2 | 1.7 | 1.9 | 2.2 | 1.7 | 2.2 | 2.5 | 2.0 |
| 45-49 | 2.9 | 3.2 | 2.5 | 2.8 | 3.2 | 2.5 | 3.3 | 3.7 | 3.0 |
| 50-54 | 4.4 | 5.1 | 3.7 | 4.3 | 5.0 | 3.7 | 5.3 | 6.6 | 4.3 |
| 55-59 | 7.4 | 9.2 | 5.7 | 7.5 | 9.4 | 5.7 | 8.0 | 10.2 | 6.2 |
| 60-64 | 12.7 | 16.3 | 9.5 | 12.9 | 16.6 | 9.5 | 13.5 | 17.2 | 10.6 |
| 65-69 | 20.6 | 27.8 | 14.5 | 21.3 | 28.5 | 14.9 | 19.2 | 26.7 | 13.6 |
| 70-74 | 32.8 | 45.3 | 22.8 | 33.8 | 46.5 | 23.5 | 29.6 | 42.3 | 21.1 |
| 75-79 | 46.8 | 65.3 | 33.7 | 48.4 | 67.6 | 34.6 | 37.8 | 50.3 | 30.4 |
| 80-84 | 62.8 | 89.0 | 47.0 | 65.1 | 92.4 | 48.5 | 45.8 | 61.3 | 37.8 |
| 85+ | 80.9 | 114.9 | 66.3 | 83.7 | 119.8 | 68.3 | 61.3 | 83.0 | 53.0 |

^a SEER 17 areas. Rates are per 100,000 and are age-adjusted to the 2000 US Std Population (19 age groups - Census P25-1130), unless noted.

^b NCHS public use data file for the total US. Rates are per 100,000 and are age-adjusted to the 2000 US Std Population (19 age groups - Census P25-1130), unless noted.

^c Rates are per 100,000 and are age-adjusted to the IARC world standard population.

- Statistic not shown. Rate based on less than 16 cases for the time interval.

Table XIII-9
LYMPHOCYTIC LEUKEMIA

SEER INCIDENCE^a RATES, AGE-ADJUSTED AND AGE-SPECIFIC RATES, BY RACE AND SEX

| | All Races | | | Whites | | | Blacks | | |
|---------------------------------------|-----------|-------|---------|--------|-------|---------|--------|-------|---------|
| | Total | Males | Females | Total | Males | Females | Total | Males | Females |
| <u>ACUTE LYMPHOCYTIC LEUKEMIA</u> | | | | | | | | | |
| <u>AGE AT DIAGNOSIS</u> | | | | | | | | | |
| AGE-ADJUSTED RATES, 2000-2004 | | | | | | | | | |
| All ages | 1.6 | 1.8 | 1.4 | 1.7 | 1.9 | 1.5 | 0.8 | 0.9 | 0.8 |
| Under 65 | 1.6 | 1.8 | 1.4 | 1.7 | 2.0 | 1.5 | 0.8 | 0.9 | 0.8 |
| 65 and over | 1.5 | 1.7 | 1.4 | 1.6 | 1.8 | 1.4 | 0.9 | - | 1.0 |
| All ages(IARC world std) ^b | 1.9 | 2.2 | 1.7 | 2.1 | 2.4 | 1.8 | 1.0 | 1.0 | 0.9 |
| AGE-SPECIFIC RATES, 2000-2004 | | | | | | | | | |
| <1 | 1.9 | 1.7 | 2.2 | 1.9 | 1.7 | 2.2 | - | - | - |
| 1-4 | 7.5 | 8.4 | 6.6 | 8.3 | 9.4 | 7.3 | 2.8 | 3.2 | 2.3 |
| 5-9 | 3.3 | 3.4 | 3.2 | 3.6 | 3.7 | 3.5 | 1.6 | 1.4 | 1.8 |
| 10-14 | 2.0 | 2.2 | 1.8 | 2.1 | 2.3 | 1.9 | 1.1 | 1.1 | 1.2 |
| 15-19 | 1.7 | 2.3 | 1.1 | 1.9 | 2.7 | 1.1 | 0.7 | - | - |
| 20-24 | 0.8 | 1.1 | 0.5 | 0.9 | 1.3 | 0.6 | 0.5 | - | - |
| 25-29 | 0.6 | 0.8 | 0.5 | 0.7 | 0.9 | 0.5 | - | - | - |
| 30-34 | 0.7 | 0.8 | 0.6 | 0.7 | 0.8 | 0.6 | 0.5 | - | - |
| 35-39 | 0.6 | 0.8 | 0.5 | 0.7 | 0.8 | 0.5 | - | - | - |
| 40-44 | 0.6 | 0.7 | 0.6 | 0.6 | 0.7 | 0.6 | 0.5 | - | - |
| 45-49 | 0.7 | 0.7 | 0.6 | 0.7 | 0.8 | 0.6 | - | - | - |
| 50-54 | 0.8 | 0.9 | 0.7 | 0.8 | 0.9 | 0.7 | 0.8 | - | - |
| 55-59 | 1.0 | 0.9 | 1.0 | 1.0 | 0.9 | 1.1 | - | - | - |
| 60-64 | 1.0 | 1.2 | 0.8 | 1.0 | 1.2 | 0.7 | - | - | - |
| 65-69 | 1.3 | 1.3 | 1.2 | 1.4 | 1.4 | 1.4 | - | - | - |
| 70-74 | 1.5 | 1.8 | 1.3 | 1.5 | 1.9 | 1.2 | - | - | - |
| 75-79 | 1.7 | 1.7 | 1.6 | 1.7 | 1.7 | 1.7 | - | - | - |
| 80-84 | 1.2 | 1.3 | 1.1 | 1.3 | 1.5 | 1.2 | - | - | - |
| 85+ | 2.0 | 2.6 | 1.7 | 2.0 | 2.7 | 1.8 | - | - | - |
| <u>CHRONIC LYMPHOCYTIC LEUKEMIA</u> | | | | | | | | | |
| <u>AGE AT DIAGNOSIS</u> | | | | | | | | | |
| AGE-ADJUSTED RATES, 2000-2004 | | | | | | | | | |
| All ages | 3.9 | 5.5 | 2.8 | 4.1 | 5.8 | 2.9 | 3.0 | 4.4 | 2.1 |
| Under 65 | 1.3 | 1.7 | 0.8 | 1.3 | 1.8 | 0.9 | 1.0 | 1.4 | 0.6 |
| 65 and over | 22.3 | 31.5 | 16.1 | 23.6 | 33.5 | 16.9 | 17.1 | 24.9 | 12.4 |
| All ages(IARC world std) ^b | 2.4 | 3.3 | 1.6 | 2.5 | 3.4 | 1.7 | 1.9 | 2.7 | 1.3 |
| AGE-SPECIFIC RATES, 2000-2004 | | | | | | | | | |
| <1 | - | - | - | - | - | - | - | - | - |
| 1-4 | - | - | - | - | - | - | - | - | - |
| 5-9 | - | - | - | - | - | - | - | - | - |
| 10-14 | - | - | - | - | - | - | - | - | - |
| 15-19 | - | - | - | - | - | - | - | - | - |
| 20-24 | - | - | - | - | - | - | - | - | - |
| 25-29 | - | - | - | - | - | - | - | - | - |
| 30-34 | 0.1 | 0.1 | - | 0.1 | 0.2 | - | - | - | - |
| 35-39 | 0.3 | 0.3 | 0.2 | 0.3 | 0.3 | 0.2 | - | - | - |
| 40-44 | 0.6 | 0.9 | 0.4 | 0.7 | 0.9 | 0.4 | 0.5 | - | - |
| 45-49 | 1.6 | 2.1 | 1.1 | 1.7 | 2.2 | 1.2 | 1.2 | 1.6 | - |
| 50-54 | 3.2 | 4.4 | 2.1 | 3.4 | 4.6 | 2.3 | 2.8 | 4.4 | 1.5 |
| 55-59 | 6.4 | 8.8 | 4.1 | 6.7 | 9.2 | 4.3 | 4.8 | 7.0 | 2.9 |
| 60-64 | 9.9 | 13.6 | 6.5 | 10.3 | 14.1 | 6.8 | 7.7 | 11.7 | 4.4 |
| 65-69 | 15.0 | 20.1 | 10.7 | 15.9 | 21.2 | 11.4 | 13.1 | 18.5 | 8.9 |
| 70-74 | 19.1 | 26.9 | 13.0 | 20.4 | 28.6 | 13.7 | 15.2 | 20.5 | 11.5 |
| 75-79 | 25.5 | 36.1 | 18.0 | 26.9 | 38.1 | 19.0 | 19.5 | 29.9 | 13.0 |
| 80-84 | 29.1 | 41.3 | 21.5 | 30.6 | 43.9 | 22.3 | 22.4 | 32.5 | 16.9 |
| 85+ | 31.8 | 47.0 | 24.9 | 33.7 | 50.7 | 26.1 | 20.0 | 30.6 | 15.8 |

^a SEER 17 areas. Rates are per 100,000 and are age-adjusted to the 2000 US Std Population (19 age groups - Census P25-1130), unless noted.

^b Rates are per 100,000 and are age-adjusted to the IARC world standard population.

- Statistic not shown. Rate based on less than 16 cases for the time interval.

Table XIII-10
MYELOID LEUKEMIA

SEER INCIDENCE^a RATES, AGE-ADJUSTED AND AGE-SPECIFIC RATES, BY RACE AND SEX

| | All Races | | | Whites | | | Blacks | | |
|---------------------------------------|-----------|-------|---------|--------|-------|---------|--------|-------|---------|
| | Total | Males | Females | Total | Males | Females | Total | Males | Females |
| <u>ACUTE MYELOID LEUKEMIA</u> | | | | | | | | | |
| <u>AGE AT DIAGNOSIS</u> | | | | | | | | | |
| AGE-ADJUSTED RATES, 2000-2004 | | | | | | | | | |
| All ages | 3.6 | 4.5 | 3.0 | 3.7 | 4.7 | 3.1 | 3.2 | 3.9 | 2.7 |
| Under 65 | 1.7 | 1.9 | 1.6 | 1.8 | 1.9 | 1.6 | 1.7 | 2.0 | 1.5 |
| 65 and over | 16.8 | 22.9 | 12.6 | 17.4 | 23.8 | 13.1 | 13.5 | 17.1 | 11.2 |
| All ages(IARC world std) ^b | 2.5 | 3.0 | 2.1 | 2.6 | 3.1 | 2.2 | 2.2 | 2.7 | 1.9 |
| AGE-SPECIFIC RATES, 2000-2004 | | | | | | | | | |
| <1 | 1.4 | 1.4 | 1.3 | 1.5 | 1.5 | 1.4 | - | - | - |
| 1-4 | 0.8 | 0.9 | 0.8 | 0.8 | 0.9 | 0.8 | 0.8 | - | - |
| 5-9 | 0.4 | 0.5 | 0.4 | 0.4 | 0.4 | 0.4 | 0.4 | - | - |
| 10-14 | 0.6 | 0.7 | 0.6 | 0.6 | 0.6 | 0.6 | 0.6 | 0.8 | - |
| 15-19 | 0.9 | 0.9 | 0.8 | 0.9 | 1.0 | 0.8 | 0.8 | - | - |
| 20-24 | 0.9 | 1.0 | 0.9 | 1.0 | 1.1 | 0.9 | 0.7 | - | - |
| 25-29 | 0.9 | 1.0 | 0.9 | 1.0 | 1.0 | 0.9 | 0.7 | - | - |
| 30-34 | 1.2 | 1.3 | 1.2 | 1.2 | 1.2 | 1.2 | 1.4 | 1.5 | 1.2 |
| 35-39 | 1.3 | 1.3 | 1.4 | 1.3 | 1.3 | 1.4 | 1.6 | 1.7 | 1.5 |
| 40-44 | 1.6 | 1.8 | 1.5 | 1.7 | 1.8 | 1.5 | 1.5 | 1.9 | 1.1 |
| 45-49 | 2.3 | 2.5 | 2.1 | 2.2 | 2.3 | 2.1 | 2.9 | 3.3 | 2.5 |
| 50-54 | 3.1 | 3.3 | 2.9 | 3.1 | 3.2 | 3.0 | 2.8 | 3.5 | 2.2 |
| 55-59 | 4.8 | 5.2 | 4.3 | 4.8 | 5.4 | 4.2 | 4.8 | 5.3 | 4.5 |
| 60-64 | 7.2 | 8.5 | 5.9 | 7.4 | 8.8 | 6.2 | 6.4 | 7.2 | 5.8 |
| 65-69 | 10.7 | 13.7 | 8.2 | 11.3 | 14.3 | 8.7 | 8.5 | 10.6 | 6.9 |
| 70-74 | 15.2 | 20.3 | 11.1 | 15.8 | 21.2 | 11.4 | 13.0 | 18.7 | 9.0 |
| 75-79 | 19.5 | 26.4 | 14.7 | 20.1 | 27.1 | 15.2 | 14.5 | 17.3 | 12.7 |
| 80-84 | 23.2 | 32.5 | 17.4 | 24.0 | 33.4 | 18.1 | 17.5 | 23.5 | 14.2 |
| 85+ | 21.1 | 31.2 | 16.5 | 21.8 | 33.3 | 16.6 | 19.4 | 20.7 | 18.9 |
| <u>CHRONIC MYELOID LEUKEMIA</u> | | | | | | | | | |
| <u>AGE AT DIAGNOSIS</u> | | | | | | | | | |
| AGE-ADJUSTED RATES, 2000-2004 | | | | | | | | | |
| All ages | 1.5 | 2.0 | 1.2 | 1.5 | 2.0 | 1.2 | 1.5 | 1.9 | 1.1 |
| Under 65 | 0.8 | 0.9 | 0.6 | 0.7 | 0.9 | 0.6 | 0.8 | 1.1 | 0.6 |
| 65 and over | 6.8 | 9.3 | 5.0 | 7.0 | 9.6 | 5.2 | 6.0 | 7.9 | 4.7 |
| All ages(IARC world std) ^b | 1.0 | 1.3 | 0.8 | 1.0 | 1.3 | 0.8 | 1.0 | 1.4 | 0.7 |
| AGE-SPECIFIC RATES, 2000-2004 | | | | | | | | | |
| <1 | 0.4 | - | - | 0.4 | - | - | - | - | - |
| 1-4 | 0.1 | 0.2 | - | 0.1 | - | - | - | - | - |
| 5-9 | - | - | - | - | - | - | - | - | - |
| 10-14 | 0.1 | 0.1 | - | 0.1 | - | - | - | - | - |
| 15-19 | 0.2 | 0.2 | 0.1 | 0.2 | 0.2 | - | - | - | - |
| 20-24 | 0.3 | 0.4 | 0.2 | 0.3 | 0.3 | 0.2 | - | - | - |
| 25-29 | 0.5 | 0.6 | 0.4 | 0.5 | 0.6 | 0.4 | 0.6 | - | - |
| 30-34 | 0.7 | 0.8 | 0.5 | 0.6 | 0.8 | 0.4 | 0.6 | - | - |
| 35-39 | 0.9 | 1.1 | 0.6 | 0.9 | 1.1 | 0.7 | 0.8 | 1.2 | - |
| 40-44 | 1.0 | 1.1 | 0.8 | 0.9 | 1.0 | 0.8 | 1.4 | 1.9 | 0.9 |
| 45-49 | 1.3 | 1.4 | 1.1 | 1.2 | 1.3 | 1.2 | 1.4 | 1.5 | 1.2 |
| 50-54 | 1.5 | 1.8 | 1.2 | 1.5 | 1.8 | 1.2 | 1.3 | 1.7 | - |
| 55-59 | 1.9 | 2.4 | 1.4 | 1.9 | 2.4 | 1.4 | 2.2 | 2.9 | - |
| 60-64 | 2.8 | 3.5 | 2.1 | 2.7 | 3.4 | 2.1 | 3.0 | 4.1 | - |
| 65-69 | 4.2 | 5.7 | 3.0 | 4.3 | 5.8 | 3.0 | 3.6 | 5.2 | - |
| 70-74 | 5.5 | 7.7 | 3.8 | 5.6 | 7.8 | 3.8 | 6.1 | 8.2 | 4.6 |
| 75-79 | 8.0 | 11.0 | 5.9 | 8.4 | 11.3 | 6.3 | 6.8 | 10.1 | 4.7 |
| 80-84 | 9.2 | 13.0 | 6.9 | 9.9 | 13.8 | 7.5 | 6.6 | - | - |
| 85+ | 9.8 | 13.4 | 8.2 | 10.0 | 13.9 | 8.2 | 9.0 | - | 9.5 |

^a SEER 17 areas. Rates are per 100,000 and are age-adjusted to the 2000 US Std Population (19 age groups - Census P25-1130), unless noted.

^b NCHS public use data file for the total US. Rates are per 100,000 and are age-adjusted to the 2000 US Std Population (19 age groups - Census P25-1130), unless noted.

^c Rates are per 100,000 and are age-adjusted to the IARC world standard population.

- Statistic not shown. Rate based on less than 16 cases for the time interval.

Table XIII-11
LEUKEMIA

SURVIVAL RATES, BY RACE, SEX, DIAGNOSIS YEAR AND AGE

| | All Races | | | Whites | | | Blacks | | |
|--|-------------------|-------------------|-------------------|-------------------|-------------------|-------------------|--------|-------|---------|
| | Total | Males | Females | Total | Males | Females | Total | Males | Females |
| <u>5-YR RELATIVE SURVIVAL RATES</u> | | | | | | | | | |
| YEAR OF DIAGNOSIS: | | | | | | | | | |
| 1960-1963 ^a | - | - | - | 14 | - | - | - | - | - |
| 1970-1973 ^a | - | - | - | 22 | - | - | - | - | - |
| 1975-1977 ^b | 35.4 | 34.3 | 36.7 | 35.9 | 35.0 | 37.1 | 33.5 | 30.4 | 36.7 |
| 1978-1980 ^b | 37.8 | 36.8 | 39.1 | 38.5 | 37.7 | 39.6 | 29.4 | 28.5 | 30.5 |
| 1981-1983 ^b | 39.2 | 39.0 | 39.6 | 40.2 | 40.0 | 40.4 | 34.3 | 33.7 | 35.0 |
| 1984-1986 ^b | 41.8 | 41.3 | 42.5 | 43.1 | 42.6 | 43.7 | 33.8 | 32.7 | 35.0 |
| 1987-1989 ^b | 44.4 | 45.9 | 42.5 | 45.5 | 47.4 | 42.9 | 36.9 | 35.0 | 39.2 |
| 1990-1992 ^b | 46.6 | 46.3 | 47.0 | 48.0 | 48.2 | 47.7 | 37.4 | 31.6 | 43.7 |
| 1993-1995 ^b | 48.4 | 49.1 | 47.5 | 49.3 | 50.0 | 48.5 | 42.0 | 41.6 | 42.5 |
| 1996-2003 ^b | 49.8 ^e | 50.0 ^e | 49.6 ^e | 50.8 ^e | 50.8 ^e | 50.8 ^e | 40.3 | 40.6 | 39.9 |
| <u>5-YR PERIOD SURVIVAL RATES^{cd}</u> | | | | | | | | | |
| YEAR OF DIAGNOSIS: | | | | | | | | | |
| 1996-2003 | 50.9 | 51.3 | 50.3 | 51.2 | 51.6 | 50.7 | 42.6 | 42.1 | 42.8 |
| <u>5-YR RELATIVE SURVIVAL RATES, 1996-2003^c</u> | | | | | | | | | |
| AGE AT DIAGNOSIS: | | | | | | | | | |
| <45 | 66.0 | 64.8 | 67.7 | 67.5 | 66.3 | 69.2 | 53.9 | 52.0 | 56.2 |
| 45-54 | 55.6 | 57.6 | 52.6 | 56.9 | 58.1 | 55.0 | 44.8 | 49.9 | 39.1 |
| 55-64 | 52.6 | 52.6 | 52.6 | 54.5 | 54.4 | 54.5 | 34.2 | 30.2 | 38.4 |
| 65-74 | 41.6 | 40.2 | 43.6 | 42.6 | 40.9 | 45.0 | 32.5 | 32.1 | 33.3 |
| 75+ | 29.3 | 28.4 | 30.1 | 30.0 | 28.9 | 31.0 | 24.1 | 20.3 | 24.9 |
| Under 65 | 60.0 | 59.7 | 60.6 | 61.4 | 60.9 | 62.3 | 47.0 | 46.4 | 47.7 |
| 65 and over | 35.4 | 34.8 | 36.0 | 36.1 | 35.4 | 36.9 | 28.9 | 28.7 | 28.9 |

^a Rates are based on End Results data from a series of hospital registries and one population-based registry.

^b Rates are from the SEER 9 areas (San Francisco, Connecticut, Detroit, Hawaii, Iowa, New Mexico, Seattle, Utah, Atlanta).

Rates are based on follow-up of patients into 2004.

^c Rates are from the SEER 17 areas (San Francisco, Connecticut, Detroit, Hawaii, Iowa, New Mexico, Seattle, Utah, Atlanta, San Jose-Monterey, Los Angeles, Alaska Native Registry, Rural Georgia, California excluding SF/SJM/LA, Kentucky, Louisiana and New Jersey). California excluding SF/SJM/LA, Kentucky, Louisiana, and New Jersey contribute cases for diagnosis years 2000-2003. The remaining 13 SEER Areas contribute cases for the entire period 1996-2003. Rates are based on follow-up of patients into 2004.

^d Period survival provides a more up-to-date estimate of survival by piecing together the most recent conditional survival estimates from several cohorts. It is computed here using three calendar year blocks (2001-2003: 0-1 year survival), (2000-2002: 1-2 year survival), (1999-2001: 2-3 year survival), (1998-2000: 3-4 year survival), (1997-1999: 4-5 years survival).

^e The difference in rates between 1975-1977 and 1996-2003 is statistically significant ($p < .05$).

^f The standard error of the survival rate is between 5 and 10 percentage points.

^g The standard error of the survival rate is greater than 10 percentage points.

- Statistic could not be calculated due to fewer than 16 cases during the time period.

Table XIII-12
LYMPHOCYTIC LEUKEMIA

SURVIVAL RATES, BY RACE, SEX, DIAGNOSIS YEAR AND AGE

| | All Races | | | Whites | | | Blacks | | |
|--|-------------------|-------------------|-------------------|-------------------|-------------------|-------------------|-------------------|-------------------|-------------------|
| | Total | Males | Females | Total | Males | Females | Total | Males | Females |
| ACUTE LYMPHOCYTIC LEUKEMIA | | | | | | | | | |
| <u>5-YR RELATIVE SURVIVAL RATES</u> | | | | | | | | | |
| YEAR OF DIAGNOSIS: | | | | | | | | | |
| 1975-1977 ^a | 42.2 | 38.3 | 47.4 | 42.6 | 38.9 | 47.9 | 34.5 ^e | - | 38.9 ^f |
| 1978-1980 ^a | 50.4 | 46.8 | 55.6 | 50.7 | 47.4 | 55.4 | 31.7 ^e | 31.4 ^e | - |
| 1981-1983 ^a | 52.0 | 48.7 | 56.4 | 52.8 | 49.6 | 57.2 | 43.4 ^e | 37.6 ^e | 49.1 ^e |
| 1984-1986 ^a | 53.4 | 50.3 | 57.7 | 54.4 | 50.5 | 59.9 | 36.0 ^e | 43.6 ^e | 27.4 ^e |
| 1987-1989 ^a | 56.1 | 55.7 | 56.6 | 56.8 | 57.0 | 56.4 | 46.1 ^e | 43.1 ^e | 48.0 ^e |
| 1990-1992 ^a | 59.8 | 56.4 | 64.6 | 59.7 | 57.1 | 63.5 | 59.3 ^e | 54.2 ^e | 63.8 ^e |
| 1993-1995 ^a | 61.6 | 58.8 | 65.3 | 61.0 | 58.7 | 64.2 | 53.9 ^e | 45.7 ^e | 65.0 ^e |
| 1996-2003 ^a | 65.3 ^d | 63.5 ^d | 67.6 ^d | 66.4 ^d | 64.5 ^d | 68.7 ^d | 56.5 ^d | 53.2 ^e | 61.1 ^e |
| <u>5-YR PERIOD SURVIVAL RATES^{bc}</u> | | | | | | | | | |
| YEAR OF DIAGNOSIS: | | | | | | | | | |
| 1996-2003 | 64.0 | 62.4 | 66.0 | 64.8 | 63.7 | 66.2 | 55.0 | 46.4 | 66.1 |
| <u>5-YR RELATIVE SURVIVAL RATES, 1996-2003^b</u> | | | | | | | | | |
| AGE AT DIAGNOSIS: | | | | | | | | | |
| <45 | 73.9 | 71.0 | 77.7 | 74.9 | 72.1 | 78.7 | 62.8 | 57.1 | 69.9 |
| 45-54 | 24.5 | 27.0 | 21.5 | 23.9 | 26.9 | 19.4 | 13.7 ^e | 26.8 ^f | - |
| 55-64 | 15.9 | 13.8 | 18.6 | 13.7 | 12.4 | 15.6 | 20.9 ^f | - | - |
| 65-74 | 7.7 | 6.0 | 8.7 | 8.5 | 6.6 | 9.9 | - | - | - |
| 75+ | 5.8 | 1.8 | 8.1 | 4.6 | 0.0 | 7.5 | - | - | - |
| Under 65 | 68.1 | 65.7 | 71.3 | 68.8 | 66.4 | 71.9 | 58.1 | 53.3 | 64.3 |
| 65 and over | 7.0 | 4.7 | 8.5 | 6.9 | 4.1 | 8.8 | 9.0 ^e | - | - |
| CHRONIC LYMPHOCYTIC LEUKEMIA | | | | | | | | | |
| <u>5-YR RELATIVE SURVIVAL RATES</u> | | | | | | | | | |
| YEAR OF DIAGNOSIS: | | | | | | | | | |
| 1975-1977 ^a | 69.0 | 66.8 | 71.8 | 69.8 | 67.5 | 72.8 | 57.2 ^e | 56.3 ^e | 57.9 ^e |
| 1978-1980 ^a | 70.7 | 67.9 | 74.3 | 71.4 | 68.5 | 75.3 | 59.2 ^e | 59.6 ^e | 58.4 ^e |
| 1981-1983 ^a | 68.4 | 67.9 | 69.1 | 69.1 | 68.9 | 69.4 | 57.6 ^e | 54.3 ^e | 62.9 ^e |
| 1984-1986 ^a | 73.8 | 72.5 | 75.7 | 74.1 | 72.6 | 76.0 | 70.1 ^e | 67.3 ^e | 70.5 ^e |
| 1987-1989 ^a | 74.5 | 74.5 | 74.5 | 75.5 | 75.6 | 75.3 | 60.4 | 59.0 ^e | 62.5 ^e |
| 1990-1992 ^a | 75.5 | 74.2 | 77.3 | 76.6 | 75.5 | 78.2 | 54.0 ^e | 45.3 ^e | 62.7 ^e |
| 1993-1995 ^a | 77.4 | 76.8 | 78.1 | 78.2 | 77.5 | 79.1 | 64.4 | 63.0 ^e | 66.4 ^e |
| 1996-2003 ^a | 74.8 ^d | 73.4 ^d | 77.0 ^d | 75.5 ^d | 73.9 ^d | 77.8 | 58.3 | 52.6 | 64.5 ^e |
| <u>5-YR PERIOD SURVIVAL RATES^{bc}</u> | | | | | | | | | |
| YEAR OF DIAGNOSIS: | | | | | | | | | |
| 1996-2003 | 75.6 | 74.7 | 77.0 | 75.7 | 74.9 | 77.0 | 62.2 | 58.0 | 67.7 |
| <u>5-YR RELATIVE SURVIVAL RATES, 1996-2003^b</u> | | | | | | | | | |
| AGE AT DIAGNOSIS: | | | | | | | | | |
| <45 | 87.8 | 88.4 | 86.1 | 90.0 | 89.5 | 91.2 | 63.8 ^f | 78.6 ^f | 52.7 ^f |
| 45-54 | 83.4 | 81.7 | 86.6 | 84.4 | 82.1 | 89.1 | 67.8 ^e | 65.3 ^e | 73.5 ^e |
| 55-64 | 82.1 | 78.6 | 88.8 | 83.3 | 80.9 | 88.0 | 60.3 | 43.6 ^e | 87.1 ^e |
| 65-74 | 75.8 | 71.8 | 81.9 | 76.4 | 72.5 | 82.3 | 58.8 ^e | 55.9 ^e | 63.8 ^e |
| 75+ | 60.6 | 59.3 | 61.9 | 61.1 | 59.1 | 62.9 | 46.3 ^e | 37.0 ^e | 49.8 ^e |
| Under 65 | 83.1 | 80.6 | 87.9 | 84.3 | 82.2 | 88.7 | 63.8 | 55.5 | 77.7 ^e |
| 65 and over | 68.4 | 66.5 | 70.8 | 68.9 | 66.7 | 71.4 | 53.6 | 50.6 ^e | 56.3 ^e |

^a Rates are from the SEER 9 areas (San Francisco, Connecticut, Detroit, Hawaii, Iowa, New Mexico, Seattle, Utah, Atlanta). Rates are based on follow-up of patients into 2004.

^b Rates are from the SEER 17 areas (San Francisco, Connecticut, Detroit, Hawaii, Iowa, New Mexico, Seattle, Utah, Atlanta, San Jose-Monterey, Los Angeles, Alaska Native Registry, Rural Georgia, California excluding SF/SJM/LA, Kentucky, Louisiana and New Jersey). California excluding SF/SJM/LA, Kentucky, Louisiana, and New Jersey contribute cases for diagnosis years 2000-2003. The remaining 13 SEER Areas contribute cases for the entire period 1996-2003. Rates are based on follow-up of patients into 2004.

^c Period survival provides a more up-to-date estimate of survival by piecing together the most recent conditional survival estimates from several cohorts. It is computed here using three calendar year blocks (2001-2003: 0-1 year survival), (2000-2002: 1-2 year survival), (1999-2001: 2-3 year survival), (1998-2000: 3-4 year survival), (1997-1999: 4-5 years survival).

^d The difference in rates between 1975-1977 and 1996-2003 is statistically significant (p<.05).

^e The standard error of the survival rate is between 5 and 10 percentage points.

^f The standard error of the survival rate is greater than 10 percentage points.

- Statistic could not be calculated due to fewer than 16 cases during the time period.

Table XIII-13
MYELOID LEUKEMIA

| | SURVIVAL RATES, BY RACE, SEX, DIAGNOSIS YEAR AND AGE | | | | | | | | |
|--|--|-------------------|-------------------|-------------------|-------------------|-------------------|-------------------|-------------------|-------------------|
| | All Races | | | Whites | | | Blacks | | |
| | Total | Males | Females | Total | Males | Females | Total | Males | Females |
| ACUTE MYELOID LEUKEMIA | | | | | | | | | |
| 5-YR RELATIVE SURVIVAL RATES | | | | | | | | | |
| YEAR OF DIAGNOSIS: | | | | | | | | | |
| 1975-1977 ^a | 6.6 | 6.1 | 7.1 | 6.3 | 6.1 | 6.5 | 10.6 | 8.5 ^e | 12.1 ^e |
| 1978-1980 ^a | 8.4 | 7.9 | 9.0 | 7.8 | 6.9 | 8.8 | 10.2 | 7.2 | 13.2 |
| 1981-1983 ^a | 9.5 | 8.3 | 10.8 | 8.7 | 7.3 | 10.4 | 12.5 | 16.4 ^e | 8.8 |
| 1984-1986 ^a | 12.0 | 10.5 | 13.7 | 11.8 | 10.4 | 13.3 | 10.2 | 6.9 | 13.3 |
| 1987-1989 ^a | 12.8 | 10.5 | 15.3 | 12.7 | 11.2 | 14.4 | 10.1 | 4.7 | 16.9 ^e |
| 1990-1992 ^a | 15.3 | 13.8 | 16.9 | 15.0 | 13.5 | 16.8 | 14.6 | 14.3 | 14.7 |
| 1993-1995 ^a | 18.0 | 16.5 | 19.6 | 17.4 | 15.8 | 19.2 | 23.0 | 22.7 ^e | 22.5 |
| 1996-2003 ^a | 20.7 ^d | 19.6 ^d | 22.0 ^d | 20.0 ^d | 18.4 ^d | 21.6 ^d | 22.6 ^d | 26.5 ^d | 17.7 |
| 5-YR PERIOD SURVIVAL RATES^{bc} | | | | | | | | | |
| YEAR OF DIAGNOSIS: | | | | | | | | | |
| 1996-2003 | 21.8 | 20.9 | 22.8 | 21.1 | 19.9 | 22.4 | 22.8 | 25.3 | 19.2 |
| 5-YR RELATIVE SURVIVAL RATES, 1996-2003^b | | | | | | | | | |
| AGE AT DIAGNOSIS: | | | | | | | | | |
| <45 | 49.4 | 47.7 | 51.4 | 50.1 | 48.8 | 51.5 | 41.7 | 41.8 | 41.4 ^e |
| 45-54 | 26.5 | 25.6 | 27.6 | 26.8 | 24.4 | 29.8 | 25.0 | 28.1 ^e | 22.2 ^e |
| 55-64 | 17.3 | 15.3 | 19.6 | 17.7 | 15.5 | 20.5 | 9.3 | - | 9.8 ^e |
| 65-74 | 6.8 | 5.8 | 8.1 | 7.0 | 6.1 | 8.1 | 5.7 | 6.1 | 0.0 |
| 75+ | 1.7 | 1.1 | 2.2 | 1.7 | 1.0 | 2.1 | 2.4 | - | 1.7 |
| Under 65 | 34.9 | 33.1 | 37.2 | 35.0 | 32.7 | 37.6 | 30.8 | 32.1 | 28.8 |
| 65 and over | 4.1 | 3.6 | 4.7 | 4.1 | 3.6 | 4.6 | 4.1 | 5.7 | 2.1 |
| CHRONIC MYELOID LEUKEMIA | | | | | | | | | |
| 5-YR RELATIVE SURVIVAL RATES | | | | | | | | | |
| YEAR OF DIAGNOSIS: | | | | | | | | | |
| 1975-1977 ^a | 23.9 | 21.5 | 27.1 | 22.6 | 20.5 | 25.5 | 28.7 ^e | 22.6 ^e | 36.0 ^e |
| 1978-1980 ^a | 25.3 | 24.4 | 26.2 | 25.5 | 25.3 | 25.7 | 22.0 ^e | 20.9 ^e | 23.6 ^e |
| 1981-1983 ^a | 30.5 | 26.5 | 35.2 | 31.1 | 27.5 | 35.0 | 30.2 | 20.6 ^e | 41.3 ^e |
| 1984-1986 ^a | 23.8 | 21.6 | 26.9 | 24.4 | 21.7 | 28.3 | 22.5 | 21.9 ^e | 22.6 ^e |
| 1987-1989 ^a | 32.4 | 32.9 | 31.5 | 32.2 | 33.4 | 30.5 | 36.9 ^e | 30.3 ^e | 45.0 ^e |
| 1990-1992 ^a | 32.3 | 31.0 | 34.1 | 32.1 | 32.2 | 32.0 | 34.9 ^e | 22.1 ^e | 48.3 ^e |
| 1993-1995 ^a | 37.1 | 36.8 | 37.5 | 36.9 | 37.0 | 36.9 | 34.9 ^e | 32.8 ^e | 38.6 ^e |
| 1996-2003 ^a | 44.4 ^d | 43.1 ^d | 46.1 ^d | 44.0 ^d | 42.3 ^d | 46.0 ^d | 40.2 | 40.6 ^e | 40.0 ^e |
| 5-YR PERIOD SURVIVAL RATES^{bc} | | | | | | | | | |
| YEAR OF DIAGNOSIS: | | | | | | | | | |
| 1996-2003 | 52.3 | 52.2 | 52.3 | 51.3 | 50.5 | 52.2 | 50.5 | 48.9 | 52.0 |
| 5-YR RELATIVE SURVIVAL RATES, 1996-2003^b | | | | | | | | | |
| AGE AT DIAGNOSIS: | | | | | | | | | |
| <45 | 67.9 | 66.3 | 70.5 | 68.6 | 65.8 | 73.3 | 62.7 | 61.9 ^e | 64.4 ^e |
| 45-54 | 65.3 | 62.8 | 68.1 | 66.1 | 62.8 | 69.4 | 56.1 ^e | 56.7 ^e | 54.5 ^f |
| 55-64 | 54.4 | 52.8 | 56.8 | 57.7 | 54.3 | 63.3 | 28.5 ^e | 38.9 ^e | 13.4 ^f |
| 65-74 | 29.8 | 28.6 | 31.6 | 28.9 | 27.3 | 31.4 | 27.7 ^e | 24.4 ^e | 29.7 ^e |
| 75+ | 18.7 | 17.5 | 19.9 | 18.3 | 16.5 | 20.3 | 18.0 ^e | 7.3 ^e | 19.6 ^f |
| Under 65 | 63.6 | 61.8 | 66.3 | 64.9 | 61.8 | 69.4 | 53.2 | 55.0 | 50.9 ^e |
| 65 and over | 24.3 | 23.5 | 25.4 | 23.4 | 22.2 | 25.1 | 24.7 ^e | 20.6 ^e | 27.3 ^e |

^a Rates are from the SEER 9 areas (San Francisco, Connecticut, Detroit, Hawaii, Iowa, New Mexico, Seattle, Utah, Atlanta). Rates are based on follow-up of patients into 2004.

^b Rates are from the SEER 17 areas (San Francisco, Connecticut, Detroit, Hawaii, Iowa, New Mexico, Seattle, Utah, Atlanta, San Jose-Monterey, Los Angeles, Alaska Native Registry, Rural Georgia, California excluding SF/SJM/LA, Kentucky, Louisiana and New Jersey). California excluding SF/SJM/LA, Kentucky, Louisiana, and New Jersey contribute cases for diagnosis years 2000-2003. The remaining 13 SEER Areas contribute cases for the entire period 1996-2003. Rates are based on follow-up of patients into 2004.

^c Period survival provides a more up-to-date estimate of survival by piecing together the most recent conditional survival estimates from several cohorts. It is computed here using three calendar year blocks (2001-2003: 0-1 year survival), (2000-2002: 1-2 year survival), (1999-2001: 2-3 year survival), (1998-2000: 3-4 year survival), (1997-1999: 4-5 years survival).

^d The difference in rates between 1975-1977 and 1996-2003 is statistically significant ($p < .05$).

^e The standard error of the survival rate is between 5 and 10 percentage points.

^f The standard error of the survival rate is greater than 10 percentage points.

- Statistic could not be calculated due to fewer than 16 cases during the time period.

Table XIII-14

LEUKEMIASURVIVAL RATES^a

By Year of Diagnosis

All Races, Males and Females

Year of Diagnosis

| | 1975- 1979 | 1980- 1984 | 1985 | 1986 | 1987 | 1988 | 1989 | 1990 | 1991 | 1992 | 1993 | 1994 | 1995 | 1996 | 1997 | 1998 | 1999 | 2000 | 2001 | 2002 | 2003 |
|--|---------------|---------------|------|------|------|------|------|------|------|------|------|------|------|------|------|------|------|------|------|------|------|
| Relative Survival Rates (SEER ^b) | | | | | | | | | | | | | | | | | | | | | |
| 1-year | 61.6 | 63.8 | 65.0 | 65.3 | 64.8 | 67.0 | 65.3 | 67.5 | 66.8 | 67.9 | 68.1 | 67.2 | 68.4 | 68.6 | 68.1 | 66.4 | 65.7 | 65.9 | 69.0 | 70.1 | 71.5 |
| 2-year | 51.1 | 53.6 | 55.9 | 55.7 | 54.7 | 57.5 | 56.6 | 56.8 | 57.5 | 58.9 | 58.9 | 58.5 | 59.1 | 59.8 | 59.8 | 57.7 | 58.3 | 57.5 | 61.1 | 61.9 | |
| 3-year | 44.7 | 47.9 | 49.6 | 49.8 | 49.4 | 51.8 | 51.7 | 52.1 | 52.0 | 54.1 | 55.2 | 54.1 | 54.4 | 55.3 | 55.3 | 53.9 | 54.6 | 53.7 | 57.0 | | |
| 4-year | 40.1 | 43.2 | 45.9 | 45.8 | 45.9 | 48.4 | 47.3 | 48.8 | 47.9 | 50.7 | 51.7 | 50.9 | 51.0 | 52.1 | 51.5 | 50.2 | 51.6 | 50.6 | | | |
| 5-year | 36.1 | 39.4 | 42.7 | 42.6 | 42.8 | 45.6 | 44.7 | 46.5 | 45.5 | 47.8 | 48.5 | 48.3 | 48.5 | 48.9 | 49.0 | 48.5 | 48.7 | | | | |
| 6-year | 33.0 | 36.9 | 40.3 | 40.5 | 41.0 | 43.5 | 41.9 | 43.0 | 43.6 | 45.5 | 46.4 | 45.9 | 46.4 | 47.2 | 47.0 | 46.5 | | | | | |
| 7-year | 30.9 | 34.6 | 38.4 | 38.4 | 38.3 | 40.6 | 39.2 | 40.6 | 41.1 | 42.8 | 43.9 | 44.0 | 45.3 | 46.2 | 45.3 | | | | | | |
| 8-year | 28.8 | 32.6 | 36.4 | 36.3 | 36.2 | 38.3 | 37.5 | 38.5 | 38.8 | 40.9 | 42.9 | 41.6 | 42.9 | 45.2 | | | | | | | |
| 9-year | 27.1 | 31.0 | 34.0 | 34.8 | 34.5 | 36.8 | 35.8 | 37.2 | 37.7 | 39.3 | 41.5 | 40.5 | 42.1 | | | | | | | | |
| 10-year | 25.7 | 29.7 | 33.3 | 33.6 | 32.9 | 35.6 | 34.4 | 35.8 | 36.7 | 38.6 | 40.7 | 40.0 | | | | | | | | | |
| 11-year | 24.5 | 28.7 | 31.5 | 32.2 | 32.0 | 33.9 | 33.0 | 34.4 | 35.5 | 37.3 | 40.2 | | | | | | | | | | |
| 12-year | 23.4 | 27.8 | 31.0 | 31.5 | 30.6 | 32.9 | 32.4 | 32.9 | 35.0 | 36.8 | | | | | | | | | | | |
| 13-year | 22.8 | 27.0 | 30.5 | 31.0 | 29.7 | 31.9 | 32.1 | 31.8 | 34.9 | | | | | | | | | | | | |
| 14-year | 22.2 | 26.7 | 29.7 | 30.4 | 29.7 | 31.3 | 32.1 | 31.6 | | | | | | | | | | | | | |
| 15-year | 21.8 | 26.1 | 29.3 | 29.6 | 29.7 | 31.3 | 31.8 | | | | | | | | | | | | | | |
| 16-year | 21.1 | 25.5 | 28.7 | 29.0 | 29.4 | 31.0 | | | | | | | | | | | | | | | |
| 17-year | 20.8 | 24.9 | 28.3 | 29.0 | 29.4 | | | | | | | | | | | | | | | | |
| 18-year | 20.5 | 24.6 | 27.8 | 29.0 | | | | | | | | | | | | | | | | | |
| 19-year | 20.1 | 24.1 | 27.4 | | | | | | | | | | | | | | | | | | |
| 20-year | 19.6 | 24.0 | | | | | | | | | | | | | | | | | | | |

^a Survival rates are relative rates expressed as percents.^b Rates are from the SEER 9 areas (San Francisco, Connecticut, Detroit, Hawaii, Iowa, New Mexico, Seattle, Utah, and Atlanta).

Table XIII-15

LEUKEMIASURVIVAL RATES^a

By Year of Diagnosis

All Races, Males

Year of Diagnosis

| | 1975- 1979 | 1980- 1984 | 1985 | 1986 | 1987 | 1988 | 1989 | 1990 | 1991 | 1992 | 1993 | 1994 | 1995 | 1996 | 1997 | 1998 | 1999 | 2000 | 2001 | 2002 | 2003 |
|--|---------------|---------------|------|------|------|------|------|------|------|------|------|------|------|------|------|------|------|------|------|------|------|
| Relative Survival Rates (SEER ^b) | | | | | | | | | | | | | | | | | | | | | |
| 1-year | 61.4 | 64.1 | 65.8 | 65.2 | 66.3 | 68.2 | 65.5 | 68.2 | 68.0 | 68.3 | 69.2 | 69.2 | 70.1 | 70.0 | 68.9 | 66.4 | 66.7 | 67.5 | 71.2 | 70.9 | 72.5 |
| 2-year | 50.6 | 53.6 | 55.9 | 55.6 | 57.0 | 58.3 | 57.7 | 56.9 | 58.6 | 59.2 | 60.4 | 59.6 | 60.7 | 61.6 | 60.9 | 58.0 | 59.2 | 59.3 | 63.0 | 61.7 | |
| 3-year | 43.9 | 47.5 | 48.8 | 49.1 | 51.3 | 52.7 | 52.3 | 51.5 | 52.8 | 54.0 | 56.8 | 54.4 | 56.0 | 57.2 | 55.4 | 54.3 | 55.2 | 55.8 | 58.8 | | |
| 4-year | 39.2 | 42.7 | 45.0 | 45.4 | 48.2 | 49.1 | 48.1 | 48.1 | 47.8 | 50.8 | 53.3 | 51.8 | 52.1 | 53.7 | 51.0 | 50.3 | 51.9 | 52.1 | | | |
| 5-year | 35.0 | 38.9 | 42.5 | 42.4 | 44.6 | 46.9 | 45.8 | 44.7 | 45.6 | 48.5 | 49.5 | 48.9 | 48.8 | 49.9 | 48.5 | 48.4 | 48.1 | | | | |
| 6-year | 32.0 | 36.3 | 39.8 | 40.5 | 42.1 | 44.6 | 43.0 | 40.9 | 43.9 | 45.6 | 47.5 | 45.9 | 46.1 | 47.8 | 46.9 | 46.1 | | | | | |
| 7-year | 29.6 | 33.9 | 37.6 | 38.1 | 39.2 | 42.0 | 39.9 | 38.6 | 41.3 | 42.6 | 44.7 | 44.0 | 45.1 | 46.9 | 45.3 | | | | | | |
| 8-year | 27.3 | 31.7 | 35.6 | 35.9 | 37.7 | 39.5 | 38.1 | 36.1 | 39.0 | 40.9 | 43.7 | 41.1 | 43.4 | 46.0 | | | | | | | |
| 9-year | 25.3 | 30.0 | 33.4 | 33.9 | 36.4 | 37.6 | 36.4 | 35.0 | 37.9 | 39.6 | 42.4 | 39.3 | 42.3 | | | | | | | | |
| 10-year | 24.0 | 28.8 | 32.4 | 32.6 | 34.3 | 36.0 | 34.8 | 33.1 | 36.6 | 39.1 | 41.6 | 38.9 | | | | | | | | | |
| 11-year | 22.7 | 27.8 | 30.7 | 31.6 | 33.3 | 34.8 | 33.2 | 32.0 | 35.2 | 38.3 | 41.1 | | | | | | | | | | |
| 12-year | 21.6 | 27.4 | 30.0 | 30.9 | 31.6 | 33.9 | 32.9 | 30.5 | 34.3 | 37.6 | | | | | | | | | | | |
| 13-year | 21.2 | 26.7 | 29.6 | 30.5 | 30.4 | 33.2 | 32.6 | 29.8 | 33.9 | | | | | | | | | | | | |
| 14-year | 20.5 | 26.5 | 29.4 | 30.3 | 30.4 | 32.2 | 32.4 | 29.8 | | | | | | | | | | | | | |
| 15-year | 20.1 | 26.0 | 28.3 | 29.5 | 30.4 | 32.0 | 32.2 | | | | | | | | | | | | | | |
| 16-year | 19.5 | 25.2 | 27.4 | 29.4 | 29.9 | 31.2 | | | | | | | | | | | | | | | |
| 17-year | 19.2 | 24.5 | 27.3 | 29.4 | 29.8 | | | | | | | | | | | | | | | | |
| 18-year | 18.8 | 24.1 | 26.5 | 29.4 | | | | | | | | | | | | | | | | | |
| 19-year | 18.4 | 23.8 | 26.0 | | | | | | | | | | | | | | | | | | |
| 20-year | 17.5 | 23.5 | | | | | | | | | | | | | | | | | | | |

^a Survival rates are relative rates expressed as percents.^b Rates are from the SEER 9 areas (San Francisco, Connecticut, Detroit, Hawaii, Iowa, New Mexico, Seattle, Utah, and Atlanta).

Table XIII-16

LEUKEMIASURVIVAL RATES^a

By Year of Diagnosis

All Races, Females

Year of Diagnosis

| | 1975- 1979 | 1980- 1984 | 1985 | 1986 | 1987 | 1988 | 1989 | 1990 | 1991 | 1992 | 1993 | 1994 | 1995 | 1996 | 1997 | 1998 | 1999 | 2000 | 2001 | 2002 | 2003 |
|--|---------------|---------------|------|------|------|------|------|------|------|------|------|------|------|------|------|------|------|------|------|------|------|
| Relative Survival Rates (SEER ^b) | | | | | | | | | | | | | | | | | | | | | |
| 1-year | 61.9 | 63.4 | 64.0 | 65.3 | 62.9 | 65.4 | 65.1 | 66.4 | 65.2 | 67.3 | 66.6 | 64.8 | 66.1 | 66.7 | 67.0 | 66.5 | 64.3 | 63.8 | 66.0 | 69.1 | 70.2 |
| 2-year | 51.7 | 53.6 | 55.9 | 55.8 | 51.6 | 56.3 | 55.3 | 56.7 | 56.0 | 58.6 | 56.9 | 57.0 | 56.9 | 57.6 | 58.4 | 57.2 | 57.1 | 55.2 | 58.4 | 62.1 | |
| 3-year | 45.9 | 48.4 | 50.5 | 50.7 | 46.8 | 50.7 | 50.8 | 52.9 | 50.9 | 54.2 | 53.1 | 53.8 | 52.2 | 52.9 | 55.0 | 53.3 | 53.7 | 51.0 | 54.5 | | |
| 4-year | 41.3 | 44.0 | 47.1 | 46.4 | 42.8 | 47.4 | 46.3 | 49.8 | 48.0 | 50.4 | 49.6 | 49.6 | 49.3 | 49.9 | 52.2 | 50.2 | 51.2 | 48.5 | | | |
| 5-year | 37.4 | 40.1 | 43.0 | 43.0 | 40.3 | 43.8 | 43.3 | 48.9 | 45.4 | 46.9 | 47.1 | 47.4 | 48.0 | 47.7 | 49.8 | 48.6 | 49.4 | | | | |
| 6-year | 34.2 | 37.8 | 40.9 | 40.5 | 39.5 | 41.8 | 40.4 | 45.7 | 43.2 | 45.2 | 44.9 | 45.9 | 46.7 | 46.3 | 47.2 | 47.0 | | | | | |
| 7-year | 32.5 | 35.4 | 39.3 | 38.9 | 37.1 | 38.7 | 38.4 | 43.2 | 40.9 | 43.1 | 42.8 | 44.0 | 45.4 | 45.3 | 45.3 | | | | | | |
| 8-year | 30.7 | 33.8 | 37.5 | 36.9 | 34.2 | 36.6 | 36.7 | 41.8 | 38.6 | 41.1 | 41.9 | 42.4 | 42.4 | 44.1 | | | | | | | |
| 9-year | 29.2 | 32.4 | 34.9 | 35.8 | 32.1 | 35.6 | 35.1 | 40.0 | 37.3 | 39.0 | 40.3 | 42.1 | 41.8 | | | | | | | | |
| 10-year | 27.9 | 30.8 | 34.4 | 35.1 | 31.1 | 34.7 | 33.7 | 39.2 | 36.7 | 38.0 | 39.5 | 41.4 | | | | | | | | | |
| 11-year | 26.8 | 29.8 | 32.6 | 33.1 | 30.3 | 32.4 | 32.8 | 37.5 | 35.8 | 35.8 | 38.9 | | | | | | | | | | |
| 12-year | 25.7 | 28.2 | 31.8 | 32.2 | 29.4 | 31.5 | 31.9 | 36.0 | 35.5 | 35.1 | | | | | | | | | | | |
| 13-year | 24.8 | 27.2 | 31.5 | 31.6 | 28.3 | 29.8 | 31.5 | 34.4 | 35.5 | | | | | | | | | | | | |
| 14-year | 24.3 | 26.9 | 29.9 | 30.4 | 28.3 | 29.8 | 31.5 | 33.5 | | | | | | | | | | | | | |
| 15-year | 23.7 | 26.3 | 29.9 | 29.7 | 28.3 | 29.8 | 31.2 | | | | | | | | | | | | | | |
| 16-year | 23.1 | 25.8 | 29.9 | 28.5 | 28.3 | 29.8 | | | | | | | | | | | | | | | |
| 17-year | 22.7 | 25.3 | 29.4 | 28.4 | 28.3 | | | | | | | | | | | | | | | | |
| 18-year | 22.5 | 25.2 | 29.1 | 28.2 | | | | | | | | | | | | | | | | | |
| 19-year | 22.2 | 24.6 | 28.9 | | | | | | | | | | | | | | | | | | |
| 20-year | 22.1 | 24.6 | | | | | | | | | | | | | | | | | | | |

^a Survival rates are relative rates expressed as percents.^b Rates are from the SEER 9 areas (San Francisco, Connecticut, Detroit, Hawaii, Iowa, New Mexico, Seattle, Utah, and Atlanta).

Table XIII-17

LEUKEMIA

Risk of Being Diagnosed With Cancer in 10, 20 and 30 Years, Lifetime Risk of Being Diagnosed with Cancer, and
Lifetime Risk of Dying from Cancer Given Cancer Free At Current Age
Both Sexes, 2002-2004 By Race/Ethnicity

| Race/ Ethnicity | Current Age | Risk of Being Diagnosed with Cancer | | | Risk of Dying from Cancer | |
|--------------------|---------------------|-------------------------------------|---------------------------------|---------------------------------|------------------------------------|------------------------------------|
| | | +10 yrs Percent (95% C.I.) | +20 yrs Percent (95% C.I.) | +30 yrs Percent (95% C.I.) | Eventually Percent (95% C.I.) | Eventually Percent (95% C.I.) |
| All Races | 0 | 0.06 (0.05, 0.06) | 0.09 (0.08, 0.09) | 0.11 (0.11, 0.11) | 1.26 (1.25, 1.28) | 0.83 (0.83, 0.84) |
| | 10 | 0.03 (0.03, 0.03) | 0.05 (0.05, 0.06) | 0.09 (0.08, 0.09) | 1.22 (1.21, 1.24) | 0.84 (0.83, 0.84) |
| | 20 | 0.02 (0.02, 0.02) | 0.06 (0.05, 0.06) | 0.11 (0.11, 0.12) | 1.20 (1.18, 1.21) | 0.83 (0.82, 0.84) |
| | 30 | 0.03 (0.03, 0.03) | 0.09 (0.09, 0.09) | 0.21 (0.20, 0.21) | 1.19 (1.17, 1.20) | 0.83 (0.82, 0.84) |
| | 40 | 0.06 (0.06, 0.06) | 0.18 (0.17, 0.18) | 0.42 (0.42, 0.43) | 1.17 (1.15, 1.18) | 0.83 (0.82, 0.83) |
| | 50 | 0.12 (0.12, 0.13) | 0.38 (0.37, 0.39) | 0.75 (0.74, 0.77) | 1.14 (1.13, 1.16) | 0.83 (0.82, 0.83) |
| | 60 | 0.27 (0.26, 0.28) | 0.67 (0.66, 0.68) | 0.98 (0.97, 1.00) | 1.08 (1.07, 1.10) | 0.82 (0.81, 0.83) |
| | 70 | 0.46 (0.45, 0.47) | 0.82 (0.81, 0.84) | - (- , -) | 0.94 (0.92, 0.96) | 0.77 (0.77, 0.78) |
| 80 | 0.52 (0.50, 0.53) | - (- , -) | - (- , -) | 0.68 (0.66, 0.70) | 0.63 (0.63, 0.64) | |
| White | 0 | 0.06 (0.06, 0.06) | 0.09 (0.09, 0.09) | 0.11 (0.11, 0.12) | 1.31 (1.30, 1.33) | 0.87 (0.86, 0.88) |
| | 10 | 0.03 (0.03, 0.03) | 0.06 (0.05, 0.06) | 0.09 (0.08, 0.09) | 1.27 (1.25, 1.29) | 0.87 (0.86, 0.88) |
| | 20 | 0.02 (0.02, 0.03) | 0.06 (0.05, 0.06) | 0.11 (0.11, 0.12) | 1.24 (1.23, 1.26) | 0.87 (0.86, 0.87) |
| | 30 | 0.03 (0.03, 0.03) | 0.09 (0.09, 0.09) | 0.21 (0.21, 0.22) | 1.23 (1.21, 1.25) | 0.86 (0.86, 0.87) |
| | 40 | 0.06 (0.06, 0.06) | 0.18 (0.18, 0.19) | 0.44 (0.43, 0.45) | 1.21 (1.19, 1.23) | 0.86 (0.85, 0.87) |
| | 50 | 0.13 (0.12, 0.13) | 0.39 (0.38, 0.40) | 0.78 (0.77, 0.80) | 1.18 (1.17, 1.20) | 0.86 (0.85, 0.87) |
| | 60 | 0.28 (0.27, 0.29) | 0.70 (0.68, 0.71) | 1.02 (1.00, 1.04) | 1.12 (1.10, 1.14) | 0.85 (0.84, 0.86) |
| | 70 | 0.48 (0.47, 0.49) | 0.85 (0.84, 0.87) | - (- , -) | 0.97 (0.95, 0.99) | 0.80 (0.79, 0.81) |
| 80 | 0.53 (0.52, 0.55) | - (- , -) | - (- , -) | 0.70 (0.68, 0.72) | 0.65 (0.64, 0.66) | |
| Black | 0 | 0.03 (0.03, 0.04) | 0.05 (0.05, 0.06) | 0.07 (0.06, 0.08) | 0.86 (0.82, 0.91) | 0.60 (0.58, 0.62) |
| | 10 | 0.02 (0.02, 0.02) | 0.04 (0.04, 0.05) | 0.07 (0.07, 0.08) | 0.85 (0.81, 0.90) | 0.61 (0.59, 0.63) |
| | 20 | 0.02 (0.02, 0.03) | 0.05 (0.05, 0.06) | 0.10 (0.10, 0.11) | 0.83 (0.79, 0.88) | 0.61 (0.59, 0.62) |
| | 30 | 0.03 (0.03, 0.04) | 0.09 (0.08, 0.09) | 0.19 (0.18, 0.20) | 0.83 (0.78, 0.87) | 0.61 (0.59, 0.62) |
| | 40 | 0.05 (0.05, 0.06) | 0.16 (0.15, 0.18) | 0.35 (0.33, 0.38) | 0.81 (0.77, 0.86) | 0.60 (0.59, 0.62) |
| | 50 | 0.11 (0.10, 0.12) | 0.32 (0.29, 0.34) | 0.56 (0.53, 0.60) | 0.80 (0.76, 0.85) | 0.61 (0.59, 0.63) |
| | 60 | 0.23 (0.21, 0.25) | 0.50 (0.47, 0.54) | 0.70 (0.66, 0.74) | 0.77 (0.72, 0.82) | 0.61 (0.59, 0.63) |
| | 70 | 0.35 (0.32, 0.38) | 0.59 (0.55, 0.64) | - (- , -) | 0.68 (0.63, 0.74) | 0.58 (0.56, 0.60) |
| 80 | 0.39 (0.35, 0.44) | - (- , -) | - (- , -) | 0.53 (0.47, 0.60) | 0.48 (0.46, 0.51) | |

Devcan Version 6.2.0, April 2006, National Cancer Institute (<http://srab.cancer.gov/devcan/>).

Source: Incidence data are from the SEER 17 areas (San Francisco, Connecticut, Detroit, Hawaii, Iowa, New Mexico, Seattle, Utah, Atlanta, San Jose-Monterey, Los Angeles, Alaska Native Registry, Rural Georgia, California excluding SF/SJM/LA, Kentucky, Louisiana and New Jersey). Mortality data are from the NCHS public use data file for the total US.

- Statistic could not be calculated.

A percent or confidence interval value of 0.00 represents a value that is below 0.005.

Table XIII-17 - continued

LEUKEMIA

Risk of Being Diagnosed With Cancer in 10, 20 and 30 Years, Lifetime Risk of Being Diagnosed with Cancer, and
Lifetime Risk of Dying from Cancer Given Cancer Free At Current Age
Both Sexes, 2002-2004 By Race/Ethnicity

| Race/ Ethnicity | Current Age | Risk of Being Diagnosed with Cancer | | | | Risk of Dying from Cancer | |
|--|----------------|-------------------------------------|---------------------------------|---------------------------------|------------------------------------|------------------------------------|--|
| | | +10 yrs Percent (95% C.I.) | +20 yrs Percent (95% C.I.) | +30 yrs Percent (95% C.I.) | Eventually Percent (95% C.I.) | Eventually Percent (95% C.I.) | |
| Asian/ Pacific Islander | 0 | 0.06 (0.05, 0.07) | 0.08 (0.07, 0.09) | 0.10 (0.09, 0.11) | 0.88 (0.82, 0.95) | 0.56 (0.51, 0.62) | |
| | 10 | 0.02 (0.02, 0.03) | 0.04 (0.04, 0.05) | 0.07 (0.06, 0.08) | 0.83 (0.77, 0.90) | 0.56 (0.51, 0.61) | |
| | 20 | 0.02 (0.02, 0.02) | 0.05 (0.04, 0.06) | 0.10 (0.09, 0.11) | 0.81 (0.75, 0.88) | 0.55 (0.50, 0.61) | |
| | 30 | 0.03 (0.03, 0.04) | 0.08 (0.07, 0.09) | 0.14 (0.13, 0.16) | 0.79 (0.73, 0.86) | 0.54 (0.50, 0.60) | |
| | 40 | 0.05 (0.04, 0.05) | 0.11 (0.10, 0.13) | 0.25 (0.23, 0.28) | 0.77 (0.70, 0.84) | 0.54 (0.49, 0.59) | |
| | 50 | 0.07 (0.06, 0.08) | 0.21 (0.19, 0.23) | 0.45 (0.41, 0.48) | 0.73 (0.67, 0.80) | 0.53 (0.48, 0.58) | |
| | 60 | 0.15 (0.13, 0.17) | 0.39 (0.36, 0.42) | 0.60 (0.55, 0.65) | 0.68 (0.62, 0.76) | 0.51 (0.46, 0.57) | |
| | 70 | 0.26 (0.24, 0.29) | 0.49 (0.44, 0.54) | - (- , -) | 0.58 (0.52, 0.66) | 0.46 (0.41, 0.53) | |
| | 80 | 0.28 (0.24, 0.33) | - (- , -) | - (- , -) | 0.40 (0.33, 0.48) | 0.36 (0.30, 0.43) | |
| American Indian/ Alaska Native ^a | 0 | 0.04 (0.02, 0.07) | 0.08 (0.05, 0.11) | 0.10 (0.07, 0.14) | 0.69 (0.48, 1.07) | 0.49 (0.40, 0.62) | |
| | 10 | 0.03 (0.02, 0.05) | 0.06 (0.03, 0.09) | 0.08 (0.05, 0.12) | 0.66 (0.45, 1.05) | 0.50 (0.40, 0.63) | |
| | 20 | 0.02 (0.01, 0.04) | 0.05 (0.03, 0.08) | 0.07 (0.05, 0.11) | 0.63 (0.42, 1.02) | 0.49 (0.40, 0.62) | |
| | 30 | 0.02 (0.01, 0.05) | 0.05 (0.03, 0.09) | 0.12 (0.08, 0.17) | 0.62 (0.40, 1.02) | 0.48 (0.39, 0.62) | |
| | 40 | 0.03 (0.01, 0.06) | 0.10 (0.06, 0.15) | 0.21 (0.14, 0.30) | 0.61 (0.39, 1.02) | 0.48 (0.39, 0.62) | |
| | 50 | 0.07 (0.04, 0.12) | 0.18 (0.12, 0.28) | 0.27 (0.18, 0.40) | 0.61 (0.38, 1.03) | 0.49 (0.39, 0.64) | |
| | 60 | 0.12 (0.07, 0.21) | 0.21 (0.13, 0.34) | 0.41 (0.26, 0.62) | 0.58 (0.34, 1.03) | 0.49 (0.38, 0.64) | |
| | 70 | 0.11 (0.05, 0.21) | 0.34 (0.19, 0.57) | - (- , -) | 0.53 (0.27, 1.06) | 0.50 (0.38, 0.68) | |
| | 80 | 0.32 (0.15, 0.62) | - (- , -) | - (- , -) | 0.60 (0.26, 1.34) | 0.51 (0.36, 0.75) | |
| Hispanic ^b | 0 | 0.07 (0.06, 0.07) | 0.11 (0.10, 0.11) | 0.13 (0.13, 0.14) | 1.12 (1.05, 1.19) | 0.63 (0.60, 0.66) | |
| | 10 | 0.04 (0.04, 0.04) | 0.07 (0.06, 0.07) | 0.10 (0.09, 0.11) | 1.06 (1.00, 1.14) | 0.62 (0.59, 0.66) | |
| | 20 | 0.03 (0.03, 0.03) | 0.06 (0.06, 0.07) | 0.11 (0.10, 0.12) | 1.03 (0.96, 1.10) | 0.61 (0.58, 0.65) | |
| | 30 | 0.03 (0.03, 0.04) | 0.08 (0.08, 0.09) | 0.17 (0.16, 0.18) | 1.01 (0.94, 1.08) | 0.61 (0.58, 0.64) | |
| | 40 | 0.05 (0.04, 0.05) | 0.14 (0.13, 0.15) | 0.33 (0.31, 0.35) | 0.98 (0.92, 1.06) | 0.60 (0.57, 0.63) | |
| | 50 | 0.09 (0.08, 0.10) | 0.29 (0.27, 0.31) | 0.55 (0.52, 0.58) | 0.96 (0.89, 1.03) | 0.59 (0.56, 0.62) | |
| | 60 | 0.21 (0.19, 0.23) | 0.48 (0.45, 0.52) | 0.74 (0.69, 0.79) | 0.91 (0.84, 0.99) | 0.57 (0.54, 0.61) | |
| | 70 | 0.31 (0.28, 0.34) | 0.59 (0.55, 0.65) | - (- , -) | 0.78 (0.71, 0.87) | 0.52 (0.49, 0.56) | |
| | 80 | 0.38 (0.33, 0.43) | - (- , -) | - (- , -) | 0.63 (0.54, 0.74) | 0.44 (0.40, 0.49) | |

Devcan Version 6.2.0, April 2006, National Cancer Institute (<http://srab.cancer.gov/devcan/>).

Source: Incidence data are from the SEER 17 areas (San Francisco, Connecticut, Detroit, Hawaii, Iowa, New Mexico, Seattle, Utah, Atlanta, San Jose-Monterey, Los Angeles, Alaska Native Registry, Rural Georgia, California excluding SF/SJM/LA, Kentucky, Louisiana and New Jersey). Mortality data are from the NCHS public use data file for the total US.

^a Underlying incidence and mortality data for American Indian/Alaska Native are based on the CHSDA (Contract Health Service Delivery Area) counties.

^b Hispanic is not mutually exclusive from whites, blacks, Asian/Pacific Islanders, and American Indians/Alaska Natives. Underlying incidence data for Hispanics are based on NHIA and exclude cases from the Alaska Native Registry and Kentucky. Underlying mortality data for Hispanics exclude deaths from Minnesota, New Hampshire and North Dakota.

- Statistic could not be calculated.

A percent or confidence interval value of 0.00 represents a value that is below 0.005.

Table XIII-17 - continued

LEUKEMIA

Risk of Being Diagnosed With Cancer in 10, 20 and 30 Years, Lifetime Risk of Being Diagnosed with Cancer, and
Lifetime Risk of Dying from Cancer Given Cancer Free At Current Age
Males, 2002-2004 By Race/Ethnicity

| Race/ Ethnicity | Current Age | Risk of Being Diagnosed with Cancer | | | | Risk of Dying from Cancer | |
|--------------------|---------------------|-------------------------------------|---------------------------------|---------------------------------|------------------------------------|------------------------------------|--|
| | | +10 yrs Percent (95% C.I.) | +20 yrs Percent (95% C.I.) | +30 yrs Percent (95% C.I.) | Eventually Percent (95% C.I.) | Eventually Percent (95% C.I.) | |
| All Races | 0 | 0.06 (0.06, 0.07) | 0.10 (0.09, 0.10) | 0.12 (0.12, 0.13) | 1.50 (1.47, 1.52) | 0.98 (0.97, 0.99) | |
| | 10 | 0.04 (0.03, 0.04) | 0.06 (0.06, 0.07) | 0.10 (0.10, 0.10) | 1.46 (1.43, 1.48) | 0.98 (0.97, 1.00) | |
| | 20 | 0.03 (0.03, 0.03) | 0.06 (0.06, 0.07) | 0.13 (0.12, 0.14) | 1.43 (1.40, 1.46) | 0.98 (0.97, 0.99) | |
| | 30 | 0.04 (0.03, 0.04) | 0.10 (0.10, 0.11) | 0.25 (0.24, 0.25) | 1.42 (1.39, 1.45) | 0.98 (0.97, 0.99) | |
| | 40 | 0.07 (0.06, 0.07) | 0.21 (0.21, 0.22) | 0.52 (0.51, 0.54) | 1.41 (1.38, 1.43) | 0.98 (0.97, 0.99) | |
| | 50 | 0.15 (0.15, 0.16) | 0.47 (0.46, 0.49) | 0.95 (0.93, 0.97) | 1.39 (1.36, 1.42) | 0.99 (0.98, 1.00) | |
| | 60 | 0.35 (0.34, 0.36) | 0.86 (0.84, 0.89) | 1.23 (1.21, 1.26) | 1.34 (1.31, 1.36) | 1.00 (0.99, 1.01) | |
| | 70 | 0.62 (0.60, 0.64) | 1.06 (1.03, 1.08) | - (- , -) | 1.18 (1.15, 1.21) | 0.96 (0.95, 0.98) | |
| 80 | 0.68 (0.65, 0.70) | - (- , -) | - (- , -) | 0.87 (0.83, 0.90) | 0.80 (0.79, 0.82) | | |
| White | 0 | 0.06 (0.06, 0.07) | 0.10 (0.10, 0.11) | 0.13 (0.13, 0.14) | 1.56 (1.54, 1.59) | 1.03 (1.01, 1.04) | |
| | 10 | 0.04 (0.04, 0.04) | 0.07 (0.06, 0.07) | 0.10 (0.10, 0.11) | 1.52 (1.49, 1.55) | 1.03 (1.02, 1.04) | |
| | 20 | 0.03 (0.03, 0.03) | 0.07 (0.06, 0.07) | 0.13 (0.13, 0.14) | 1.49 (1.46, 1.52) | 1.03 (1.01, 1.04) | |
| | 30 | 0.04 (0.03, 0.04) | 0.10 (0.10, 0.11) | 0.25 (0.24, 0.26) | 1.48 (1.45, 1.51) | 1.03 (1.01, 1.04) | |
| | 40 | 0.07 (0.06, 0.07) | 0.22 (0.21, 0.22) | 0.54 (0.52, 0.55) | 1.46 (1.43, 1.49) | 1.03 (1.02, 1.04) | |
| | 50 | 0.15 (0.15, 0.16) | 0.49 (0.47, 0.50) | 0.99 (0.97, 1.01) | 1.45 (1.42, 1.48) | 1.04 (1.02, 1.05) | |
| | 60 | 0.36 (0.35, 0.37) | 0.90 (0.88, 0.92) | 1.28 (1.26, 1.31) | 1.39 (1.36, 1.42) | 1.04 (1.03, 1.06) | |
| | 70 | 0.64 (0.62, 0.66) | 1.10 (1.07, 1.13) | - (- , -) | 1.23 (1.19, 1.26) | 1.00 (0.98, 1.01) | |
| 80 | 0.71 (0.68, 0.74) | - (- , -) | - (- , -) | 0.90 (0.87, 0.94) | 0.83 (0.81, 0.85) | | |
| Black | 0 | 0.04 (0.03, 0.05) | 0.06 (0.05, 0.07) | 0.08 (0.07, 0.10) | 0.98 (0.92, 1.05) | 0.65 (0.62, 0.68) | |
| | 10 | 0.02 (0.02, 0.03) | 0.05 (0.04, 0.06) | 0.09 (0.08, 0.10) | 0.97 (0.90, 1.04) | 0.66 (0.64, 0.69) | |
| | 20 | 0.03 (0.02, 0.04) | 0.07 (0.06, 0.08) | 0.13 (0.11, 0.14) | 0.96 (0.89, 1.03) | 0.66 (0.63, 0.69) | |
| | 30 | 0.04 (0.03, 0.05) | 0.10 (0.09, 0.12) | 0.24 (0.22, 0.26) | 0.95 (0.89, 1.03) | 0.66 (0.63, 0.69) | |
| | 40 | 0.07 (0.06, 0.08) | 0.21 (0.18, 0.23) | 0.45 (0.41, 0.49) | 0.94 (0.87, 1.02) | 0.66 (0.64, 0.69) | |
| | 50 | 0.15 (0.13, 0.17) | 0.41 (0.37, 0.45) | 0.71 (0.65, 0.77) | 0.94 (0.86, 1.02) | 0.68 (0.65, 0.71) | |
| | 60 | 0.30 (0.26, 0.34) | 0.65 (0.59, 0.71) | 0.84 (0.77, 0.92) | 0.91 (0.83, 1.00) | 0.69 (0.66, 0.72) | |
| | 70 | 0.46 (0.41, 0.52) | 0.72 (0.64, 0.80) | - (- , -) | 0.81 (0.72, 0.92) | 0.67 (0.63, 0.71) | |
| 80 | 0.46 (0.39, 0.56) | - (- , -) | - (- , -) | 0.63 (0.52, 0.77) | 0.56 (0.51, 0.62) | | |

Devcan Version 6.2.0, April 2006, National Cancer Institute (<http://srab.cancer.gov/devcan/>).

Source: Incidence data are from the SEER 17 areas (San Francisco, Connecticut, Detroit, Hawaii, Iowa, New Mexico, Seattle, Utah, Atlanta, San Jose-Monterey, Los Angeles, Alaska Native Registry, Rural Georgia, California excluding SF/SJM/LA, Kentucky, Louisiana and New Jersey). Mortality data are from the NCHS public use data file for the total US.

- Statistic could not be calculated.

A percent or confidence interval value of 0.00 represents a value that is below 0.005.

Table XIII-17 - continued

LEUKEMIA

Risk of Being Diagnosed With Cancer in 10, 20 and 30 Years, Lifetime Risk of Being Diagnosed with Cancer, and
Lifetime Risk of Dying from Cancer Given Cancer Free At Current Age
Males, 2002-2004 By Race/Ethnicity

| Race/ Ethnicity | Current Age | Risk of Being Diagnosed with Cancer | | | | Risk of Dying from Cancer | |
|--|----------------|-------------------------------------|---------------------------------|---------------------------------|------------------------------------|------------------------------------|--|
| | | +10 yrs Percent (95% C.I.) | +20 yrs Percent (95% C.I.) | +30 yrs Percent (95% C.I.) | Eventually Percent (95% C.I.) | Eventually Percent (95% C.I.) | |
| Asian/ Pacific Islander | 0 | 0.06 (0.05, 0.07) | 0.08 (0.07, 0.10) | 0.11 (0.09, 0.12) | 1.03 (0.94, 1.14) | 0.66 (0.59, 0.75) | |
| | 10 | 0.03 (0.02, 0.04) | 0.05 (0.04, 0.06) | 0.09 (0.07, 0.10) | 0.98 (0.89, 1.09) | 0.66 (0.59, 0.75) | |
| | 20 | 0.02 (0.02, 0.03) | 0.06 (0.05, 0.07) | 0.11 (0.10, 0.13) | 0.96 (0.87, 1.07) | 0.65 (0.58, 0.74) | |
| | 30 | 0.03 (0.03, 0.04) | 0.09 (0.07, 0.10) | 0.16 (0.15, 0.19) | 0.94 (0.85, 1.05) | 0.65 (0.58, 0.74) | |
| | 40 | 0.05 (0.04, 0.06) | 0.13 (0.11, 0.15) | 0.31 (0.28, 0.35) | 0.91 (0.82, 1.02) | 0.64 (0.57, 0.73) | |
| | 50 | 0.08 (0.07, 0.10) | 0.27 (0.23, 0.30) | 0.57 (0.51, 0.63) | 0.88 (0.79, 0.99) | 0.63 (0.56, 0.72) | |
| | 60 | 0.19 (0.16, 0.23) | 0.51 (0.46, 0.57) | 0.75 (0.68, 0.84) | 0.83 (0.74, 0.95) | 0.62 (0.55, 0.71) | |
| | 70 | 0.35 (0.30, 0.41) | 0.62 (0.55, 0.71) | - (- , -) | 0.71 (0.61, 0.83) | 0.56 (0.49, 0.67) | |
| | 80 | 0.36 (0.29, 0.44) | - (- , -) | - (- , -) | 0.47 (0.37, 0.61) | 0.42 (0.33, 0.54) | |
| American Indian/ Alaska Native ^a | 0 | 0.06 (0.03, 0.11) | 0.10 (0.06, 0.17) | 0.11 (0.07, 0.19) | 0.49 (0.33, 1.14) | 0.49 (0.37, 0.72) | |
| | 10 | 0.04 (0.02, 0.08) | 0.06 (0.03, 0.11) | 0.07 (0.04, 0.12) | 0.44 (0.28, 1.11) | 0.49 (0.37, 0.73) | |
| | 20 | 0.01 (0.00, 0.05) | 0.02 (0.01, 0.07) | 0.05 (0.02, 0.10) | 0.40 (0.24, 1.08) | 0.49 (0.36, 0.72) | |
| | 30 | 0.01 (0.00, 0.04) | 0.03 (0.01, 0.08) | 0.11 (0.05, 0.19) | 0.40 (0.24, 1.09) | 0.48 (0.35, 0.72) | |
| | 40 | 0.03 (0.01, 0.07) | 0.10 (0.05, 0.18) | 0.24 (0.14, 0.40) | 0.40 (0.24, 1.12) | 0.48 (0.35, 0.73) | |
| | 50 | 0.08 (0.03, 0.16) | 0.23 (0.12, 0.39) | 0.32 (0.19, 0.54) | 0.40 (0.23, 1.15) | 0.50 (0.36, 0.76) | |
| | 60 | 0.16 (0.07, 0.32) | 0.27 (0.13, 0.49) | 0.35 (0.18, 0.67) | 0.35 (0.18, 1.18) | 0.50 (0.35, 0.79) | |
| | 70 | 0.13 (0.04, 0.32) | 0.22 (0.08, 0.57) | - (- , -) | 0.22 (0.08, 1.23) | 0.51 (0.34, 0.88) | |
| | 80 | 0.14 (0.02, 0.61) | - (- , -) | - (- , -) | 0.14 (0.02, 1.68) | 0.54 (0.31, 1.07) | |
| Hispanic ^b | 0 | 0.07 (0.06, 0.08) | 0.12 (0.11, 0.13) | 0.15 (0.14, 0.16) | 1.29 (1.18, 1.42) | 0.70 (0.66, 0.76) | |
| | 10 | 0.05 (0.04, 0.05) | 0.08 (0.07, 0.09) | 0.12 (0.11, 0.13) | 1.23 (1.12, 1.37) | 0.70 (0.65, 0.76) | |
| | 20 | 0.04 (0.03, 0.04) | 0.07 (0.06, 0.08) | 0.12 (0.11, 0.13) | 1.19 (1.08, 1.33) | 0.69 (0.64, 0.75) | |
| | 30 | 0.04 (0.03, 0.04) | 0.09 (0.08, 0.10) | 0.18 (0.16, 0.19) | 1.17 (1.06, 1.31) | 0.68 (0.63, 0.74) | |
| | 40 | 0.05 (0.05, 0.06) | 0.14 (0.13, 0.16) | 0.35 (0.32, 0.39) | 1.15 (1.04, 1.29) | 0.68 (0.63, 0.73) | |
| | 50 | 0.09 (0.08, 0.11) | 0.31 (0.28, 0.34) | 0.64 (0.59, 0.70) | 1.13 (1.02, 1.28) | 0.67 (0.62, 0.73) | |
| | 60 | 0.23 (0.20, 0.26) | 0.58 (0.53, 0.64) | 0.91 (0.82, 0.99) | 1.11 (0.99, 1.26) | 0.66 (0.61, 0.72) | |
| | 70 | 0.41 (0.36, 0.46) | 0.78 (0.69, 0.87) | - (- , -) | 1.01 (0.88, 1.18) | 0.62 (0.56, 0.69) | |
| | 80 | 0.53 (0.44, 0.63) | - (- , -) | - (- , -) | 0.86 (0.68, 1.08) | 0.53 (0.46, 0.62) | |

Devcan Version 6.2.0, April 2006, National Cancer Institute (<http://srab.cancer.gov/devcan/>).

Source: Incidence data are from the SEER 17 areas (San Francisco, Connecticut, Detroit, Hawaii, Iowa, New Mexico, Seattle, Utah, Atlanta, San Jose-Monterey, Los Angeles, Alaska Native Registry, Rural Georgia, California excluding SF/SJM/LA, Kentucky, Louisiana and New Jersey). Mortality data are from the NCHS public use data file for the total US.

^a Underlying incidence and mortality data for American Indian/Alaska Native are based on the CHSDA (Contract Health Service Delivery Area) counties.

^b Hispanic is not mutually exclusive from whites, blacks, Asian/Pacific Islanders, and American Indians/Alaska Natives. Underlying incidence data for Hispanics are based on NHIA and exclude cases from the Alaska Native Registry and Kentucky. Underlying mortality data for Hispanics exclude deaths from Minnesota, New Hampshire and North Dakota.

- Statistic could not be calculated.

A percent or confidence interval value of 0.00 represents a value that is below 0.005.

Table XIII-17 - continued

LEUKEMIA

Risk of Being Diagnosed With Cancer in 10, 20 and 30 Years, Lifetime Risk of Being Diagnosed with Cancer, and
Lifetime Risk of Dying from Cancer Given Cancer Free At Current Age
Females, 2002-2004 By Race/Ethnicity

| Race/ Ethnicity | Current Age | Risk of Being Diagnosed with Cancer | | | Risk of Dying from Cancer | |
|--------------------|---------------------|-------------------------------------|---------------------------------|---------------------------------|------------------------------------|------------------------------------|
| | | +10 yrs Percent (95% C.I.) | +20 yrs Percent (95% C.I.) | +30 yrs Percent (95% C.I.) | Eventually Percent (95% C.I.) | Eventually Percent (95% C.I.) |
| All Races | 0 | 0.05 (0.05, 0.05) | 0.07 (0.07, 0.08) | 0.09 (0.09, 0.10) | 1.06 (1.04, 1.08) | 0.71 (0.70, 0.72) |
| | 10 | 0.02 (0.02, 0.03) | 0.04 (0.04, 0.04) | 0.07 (0.07, 0.07) | 1.02 (1.00, 1.04) | 0.71 (0.70, 0.72) |
| | 20 | 0.02 (0.02, 0.02) | 0.05 (0.04, 0.05) | 0.09 (0.09, 0.10) | 1.00 (0.98, 1.02) | 0.71 (0.70, 0.71) |
| | 30 | 0.03 (0.03, 0.03) | 0.08 (0.07, 0.08) | 0.17 (0.16, 0.17) | 0.98 (0.96, 1.00) | 0.70 (0.69, 0.71) |
| | 40 | 0.05 (0.05, 0.05) | 0.14 (0.14, 0.15) | 0.33 (0.32, 0.34) | 0.96 (0.94, 0.98) | 0.70 (0.69, 0.71) |
| | 50 | 0.10 (0.09, 0.10) | 0.29 (0.28, 0.30) | 0.58 (0.56, 0.59) | 0.94 (0.92, 0.96) | 0.69 (0.68, 0.70) |
| | 60 | 0.20 (0.19, 0.21) | 0.50 (0.49, 0.52) | 0.78 (0.76, 0.80) | 0.88 (0.86, 0.90) | 0.68 (0.67, 0.69) |
| | 70 | 0.34 (0.33, 0.35) | 0.65 (0.63, 0.66) | - (- , -) | 0.76 (0.74, 0.78) | 0.64 (0.63, 0.65) |
| 80 | 0.41 (0.40, 0.43) | - (- , -) | - (- , -) | 0.57 (0.55, 0.59) | 0.53 (0.52, 0.54) | |
| White | 0 | 0.05 (0.05, 0.06) | 0.08 (0.07, 0.08) | 0.10 (0.09, 0.10) | 1.09 (1.07, 1.12) | 0.74 (0.73, 0.74) |
| | 10 | 0.02 (0.02, 0.03) | 0.04 (0.04, 0.05) | 0.07 (0.07, 0.08) | 1.05 (1.03, 1.07) | 0.74 (0.73, 0.75) |
| | 20 | 0.02 (0.02, 0.02) | 0.05 (0.04, 0.05) | 0.10 (0.09, 0.10) | 1.03 (1.01, 1.05) | 0.73 (0.72, 0.74) |
| | 30 | 0.03 (0.03, 0.03) | 0.08 (0.07, 0.08) | 0.17 (0.17, 0.18) | 1.01 (0.99, 1.04) | 0.72 (0.72, 0.73) |
| | 40 | 0.05 (0.05, 0.05) | 0.15 (0.14, 0.15) | 0.34 (0.33, 0.35) | 0.99 (0.97, 1.02) | 0.72 (0.71, 0.73) |
| | 50 | 0.10 (0.09, 0.10) | 0.30 (0.29, 0.31) | 0.60 (0.58, 0.62) | 0.96 (0.94, 0.99) | 0.71 (0.70, 0.72) |
| | 60 | 0.21 (0.20, 0.22) | 0.52 (0.51, 0.54) | 0.80 (0.78, 0.82) | 0.90 (0.88, 0.93) | 0.70 (0.69, 0.71) |
| | 70 | 0.35 (0.34, 0.36) | 0.66 (0.64, 0.68) | - (- , -) | 0.78 (0.76, 0.80) | 0.65 (0.64, 0.66) |
| 80 | 0.42 (0.41, 0.44) | - (- , -) | - (- , -) | 0.58 (0.55, 0.60) | 0.55 (0.54, 0.56) | |
| Black | 0 | 0.03 (0.02, 0.03) | 0.05 (0.04, 0.06) | 0.06 (0.05, 0.07) | 0.76 (0.70, 0.82) | 0.56 (0.54, 0.58) |
| | 10 | 0.02 (0.01, 0.03) | 0.03 (0.03, 0.04) | 0.06 (0.05, 0.07) | 0.75 (0.69, 0.81) | 0.57 (0.55, 0.59) |
| | 20 | 0.01 (0.01, 0.02) | 0.04 (0.03, 0.05) | 0.08 (0.07, 0.10) | 0.73 (0.67, 0.79) | 0.56 (0.54, 0.59) |
| | 30 | 0.03 (0.02, 0.03) | 0.07 (0.06, 0.08) | 0.15 (0.13, 0.16) | 0.72 (0.67, 0.78) | 0.56 (0.54, 0.58) |
| | 40 | 0.04 (0.04, 0.05) | 0.12 (0.11, 0.14) | 0.27 (0.24, 0.30) | 0.71 (0.65, 0.77) | 0.56 (0.53, 0.58) |
| | 50 | 0.08 (0.07, 0.09) | 0.23 (0.21, 0.26) | 0.44 (0.40, 0.48) | 0.69 (0.63, 0.75) | 0.56 (0.53, 0.58) |
| | 60 | 0.17 (0.14, 0.19) | 0.39 (0.35, 0.43) | 0.59 (0.53, 0.64) | 0.67 (0.61, 0.73) | 0.55 (0.52, 0.58) |
| | 70 | 0.27 (0.23, 0.30) | 0.50 (0.45, 0.56) | - (- , -) | 0.59 (0.53, 0.66) | 0.52 (0.49, 0.55) |
| 80 | 0.35 (0.29, 0.41) | - (- , -) | - (- , -) | 0.49 (0.41, 0.57) | 0.44 (0.41, 0.48) | |

Devcan Version 6.2.0, April 2006, National Cancer Institute (<http://srab.cancer.gov/devcan/>).

Source: Incidence data are from the SEER 17 areas (San Francisco, Connecticut, Detroit, Hawaii, Iowa, New Mexico, Seattle, Utah, Atlanta, San Jose-Monterey, Los Angeles, Alaska Native Registry, Rural Georgia, California excluding SF/SJM/LA, Kentucky, Louisiana and New Jersey). Mortality data are from the NCHS public use data file for the total US.

- Statistic could not be calculated.

A percent or confidence interval value of 0.00 represents a value that is below 0.005.

Table XIII-17 - continued

LEUKEMIA

Risk of Being Diagnosed With Cancer in 10, 20 and 30 Years, Lifetime Risk of Being Diagnosed with Cancer, and
Lifetime Risk of Dying from Cancer Given Cancer Free At Current Age
Females, 2002-2004 By Race/Ethnicity

| Race/ Ethnicity | Current Age | Risk of Being Diagnosed with Cancer | | | | Risk of Dying from Cancer | |
|--|----------------|-------------------------------------|---------------------------------|---------------------------------|------------------------------------|------------------------------------|--|
| | | +10 yrs Percent (95% C.I.) | +20 yrs Percent (95% C.I.) | +30 yrs Percent (95% C.I.) | Eventually Percent (95% C.I.) | Eventually Percent (95% C.I.) | |
| Asian/ Pacific Islander | 0 | 0.06 (0.05, 0.08) | 0.08 (0.07, 0.10) | 0.10 (0.08, 0.11) | 0.75 (0.67, 0.85) | 0.47 (0.41, 0.56) | |
| | 10 | 0.02 (0.01, 0.03) | 0.03 (0.03, 0.04) | 0.06 (0.05, 0.07) | 0.69 (0.61, 0.80) | 0.47 (0.40, 0.55) | |
| | 20 | 0.02 (0.01, 0.02) | 0.04 (0.03, 0.05) | 0.08 (0.07, 0.10) | 0.68 (0.60, 0.78) | 0.46 (0.40, 0.55) | |
| | 30 | 0.03 (0.02, 0.03) | 0.07 (0.06, 0.08) | 0.13 (0.11, 0.14) | 0.66 (0.58, 0.77) | 0.46 (0.39, 0.54) | |
| | 40 | 0.04 (0.03, 0.05) | 0.10 (0.09, 0.12) | 0.20 (0.18, 0.23) | 0.64 (0.56, 0.74) | 0.45 (0.38, 0.54) | |
| | 50 | 0.06 (0.05, 0.07) | 0.16 (0.14, 0.19) | 0.34 (0.30, 0.39) | 0.61 (0.52, 0.71) | 0.44 (0.37, 0.53) | |
| | 60 | 0.11 (0.09, 0.13) | 0.29 (0.25, 0.33) | 0.47 (0.41, 0.53) | 0.56 (0.48, 0.67) | 0.42 (0.35, 0.51) | |
| | 70 | 0.20 (0.17, 0.23) | 0.38 (0.33, 0.45) | - (- , -) | 0.48 (0.40, 0.59) | 0.39 (0.32, 0.48) | |
| | 80 | 0.22 (0.18, 0.28) | - (- , -) | - (- , -) | 0.34 (0.25, 0.47) | 0.31 (0.23, 0.42) | |
| American Indian/ Alaska Native ^a | 0 | 0.03 (0.01, 0.08) | 0.05 (0.02, 0.11) | 0.08 (0.04, 0.14) | 0.85 (0.50, 1.52) | 0.49 (0.37, 0.69) | |
| | 10 | 0.02 (0.01, 0.05) | 0.05 (0.02, 0.10) | 0.09 (0.05, 0.15) | 0.83 (0.48, 1.52) | 0.49 (0.37, 0.69) | |
| | 20 | 0.03 (0.01, 0.07) | 0.07 (0.03, 0.13) | 0.10 (0.06, 0.17) | 0.82 (0.47, 1.50) | 0.49 (0.36, 0.69) | |
| | 30 | 0.04 (0.02, 0.08) | 0.07 (0.04, 0.13) | 0.13 (0.07, 0.22) | 0.79 (0.44, 1.49) | 0.48 (0.35, 0.68) | |
| | 40 | 0.03 (0.01, 0.08) | 0.09 (0.05, 0.17) | 0.17 (0.10, 0.30) | 0.77 (0.41, 1.47) | 0.47 (0.35, 0.68) | |
| | 50 | 0.06 (0.02, 0.13) | 0.14 (0.07, 0.27) | 0.22 (0.11, 0.40) | 0.76 (0.40, 1.48) | 0.49 (0.35, 0.70) | |
| | 60 | 0.09 (0.03, 0.20) | 0.17 (0.07, 0.34) | 0.45 (0.24, 0.78) | 0.73 (0.36, 1.50) | 0.47 (0.34, 0.70) | |
| | 70 | 0.09 (0.02, 0.25) | 0.41 (0.19, 0.78) | - (- , -) | 0.74 (0.33, 1.62) | 0.49 (0.33, 0.75) | |
| | 80 | 0.43 (0.17, 0.89) | - (- , -) | - (- , -) | 0.87 (0.35, 2.04) | 0.48 (0.30, 0.82) | |
| Hispanic ^b | 0 | 0.06 (0.05, 0.07) | 0.09 (0.09, 0.10) | 0.11 (0.10, 0.12) | 0.98 (0.90, 1.08) | 0.57 (0.53, 0.61) | |
| | 10 | 0.03 (0.03, 0.04) | 0.05 (0.05, 0.06) | 0.08 (0.08, 0.09) | 0.93 (0.85, 1.03) | 0.56 (0.52, 0.61) | |
| | 20 | 0.02 (0.02, 0.02) | 0.05 (0.04, 0.06) | 0.10 (0.09, 0.11) | 0.90 (0.81, 1.00) | 0.55 (0.51, 0.60) | |
| | 30 | 0.03 (0.02, 0.03) | 0.08 (0.07, 0.09) | 0.16 (0.15, 0.18) | 0.88 (0.80, 0.98) | 0.55 (0.51, 0.59) | |
| | 40 | 0.05 (0.04, 0.05) | 0.13 (0.12, 0.15) | 0.31 (0.28, 0.34) | 0.86 (0.77, 0.96) | 0.54 (0.50, 0.58) | |
| | 50 | 0.09 (0.08, 0.10) | 0.27 (0.24, 0.30) | 0.47 (0.43, 0.52) | 0.82 (0.74, 0.92) | 0.52 (0.48, 0.57) | |
| | 60 | 0.19 (0.17, 0.22) | 0.40 (0.36, 0.44) | 0.61 (0.55, 0.67) | 0.76 (0.68, 0.86) | 0.50 (0.46, 0.55) | |
| | 70 | 0.23 (0.20, 0.26) | 0.46 (0.40, 0.52) | - (- , -) | 0.62 (0.54, 0.73) | 0.46 (0.41, 0.51) | |
| | 80 | 0.29 (0.24, 0.35) | - (- , -) | - (- , -) | 0.50 (0.40, 0.62) | 0.38 (0.34, 0.44) | |

Devcan Version 6.2.0, April 2006, National Cancer Institute (<http://srab.cancer.gov/devcan/>).

Source: Incidence data are from the SEER 17 areas (San Francisco, Connecticut, Detroit, Hawaii, Iowa, New Mexico, Seattle, Utah, Atlanta, San Jose-Monterey, Los Angeles, Alaska Native Registry, Rural Georgia, California excluding SF/SJM/LA, Kentucky, Louisiana and New Jersey). Mortality data are from the NCHS public use data file for the total US.

^a Underlying incidence and mortality data for American Indian/Alaska Native are based on the CHSDA (Contract Health Service Delivery Area) counties.

^b Hispanic is not mutually exclusive from whites, blacks, Asian/Pacific Islanders, and American Indians/Alaska Natives. Underlying incidence data for Hispanics are based on NHIA and exclude cases from the Alaska Native Registry and Kentucky. Underlying mortality data for Hispanics exclude deaths from Minnesota, New Hampshire and North Dakota.

- Statistic could not be calculated.

A percent or confidence interval value of 0.00 represents a value that is below 0.005.

Table XIII-18
LEUKEMIA

SEER INCIDENCE AND U.S. MORTALITY
AGE-ADJUSTED RATES AND TRENDS^a
By Race/Ethnicity and Sex

SEER Incidence

| RACE/ETHNICITY | Rate 2000-2004 ^b | | | Trend 1995-2004 ^c | | |
|----------------------------------|-----------------------------|-------|---------|------------------------------|-------|---------|
| | Rate per 100,000 persons | | | APC (%) | | |
| | Total | Males | Females | Total | Males | Females |
| All Races | 12.3 | 16.0 | 9.5 | -1.0* | -1.2* | -0.9* |
| White | 12.8 | 16.7 | 9.9 | -1.1* | -1.3* | -1.0* |
| White Hispanic ^d | 9.9 | 12.1 | 8.2 | -1.8* | -2.2* | -1.4 |
| White Non-Hispanic ^d | 13.1 | 17.1 | 9.9 | -0.9* | -1.1* | -0.9* |
| Black | 10.2 | 13.2 | 8.1 | -0.2 | -0.6 | -0.1 |
| Asian/Pacific Islander | 7.4 | 9.2 | 5.9 | -1.1 | -1.1 | -0.7 |
| Amer Ind/Alaska Nat ^e | 6.4 | 6.5 | 6.1 | 1.1 | - | - |
| Hispanic ^d | 9.6 | 11.8 | 8.0 | -1.6* | -2.1* | -1.2 |

U.S. Mortality^f

| RACE/ETHNICITY | Rate 2000-2004 | | | Trend 1995-2004 | | |
|---------------------------------|--------------------------|-------|---------|-----------------|-------|---------|
| | Rate per 100,000 persons | | | APC (%) | | |
| | Total | Males | Females | Total | Males | Females |
| All Races | 7.5 | 10.0 | 5.7 | -0.8* | -0.9* | -0.9* |
| White | 7.7 | 10.3 | 5.8 | -0.7* | -0.8* | -0.8* |
| White Hispanic ^d | 5.3 | 6.6 | 4.3 | -1.2* | -1.5* | -1.1 |
| White Non-Hispanic ^d | 7.8 | 10.4 | 5.9 | -0.6* | -0.7* | -0.7* |
| Black | 6.7 | 8.8 | 5.3 | -1.1* | -1.6* | -0.7 |
| Asian/Pacific Islander | 3.9 | 5.0 | 3.0 | -1.9* | -0.9 | -2.9* |
| Amer Ind/Alaska Nat | | | | | | |
| Total U.S. | 4.0 | 4.5 | 3.5 | -1.1 | -2.1 | -1.2 |
| CHSDA Counties | 4.8 | 5.6 | 4.1 | 0.3 | 0.7 | - |
| Non-CHSDA Counties | 2.9 | 3.1 | 2.8 | -3.0 | - | - |
| Hispanic ^d | 5.1 | 6.4 | 4.1 | -1.2* | -1.5* | -1.1 |

- The APC is the Annual Percent Change over the time interval.
- Statistic not shown. Rate based on less than 16 cases for the time interval. Trend based on less than 10 cases for at least one year within the time interval.
- a Rates are age-adjusted to the 2000 US Std Population (19 age groups - Census P25-1130). Trends are based on rates age-adjusted to the 2000 US Std Population (19 age groups - Census P25-1130).
- b Incidence data used in calculating the rates are from the 17 SEER areas (San Francisco, Connecticut, Detroit, Hawaii, Iowa, New Mexico, Seattle, Utah, Atlanta, San Jose-Monterey, Los Angeles, Alaska Native Registry, Rural Georgia, California excluding SF/SJM/LA, Kentucky, Louisiana and New Jersey).
- c Incidence data used in calculating the trends are from the 13 SEER areas (San Francisco, Connecticut, Detroit, Hawaii, Iowa, New Mexico, Seattle, Utah, Atlanta, San Jose-Monterey, Los Angeles, Alaska Native Registry and Rural Georgia).
- d Hispanic and Non-Hispanic are not mutually exclusive from whites, blacks, Asian/Pacific Islanders, and American Indians/Alaska Natives. Incidence data for Hispanics and Non-Hispanics are based on NHIA and exclude cases from the Alaska Native Registry and Kentucky. The 2000-2004 Hispanic and Non-Hispanic death rates exclude deaths from Minnesota, New Hampshire and North Dakota. The 1995-2004 Hispanic and Non-Hispanic mortality trends exclude deaths from Maine, Minnesota, New Hampshire, North Dakota, and Oklahoma.
- e Incidence data for American Indian/Alaska Native are based on the CHSDA(Contract Health Service Delivery Area) counties.
- f Mortality data are analyzed from a public use file provided by the National Center for Health Statistics (NCHS).
- * The APC is significantly different from zero (p<.05).

Table XIII-19

LEUKEMIAAGE-ADJUSTED SEER INCIDENCE RATES^a

By Registry, Race and Sex

| | <u>All Races</u> | | | <u>Whites</u> | | | <u>Blacks</u> | | |
|--|------------------|--------------|----------------|---------------|--------------|----------------|---------------|--------------|----------------|
| | <u>Total</u> | <u>Males</u> | <u>Females</u> | <u>Total</u> | <u>Males</u> | <u>Females</u> | <u>Total</u> | <u>Males</u> | <u>Females</u> |
| <u>SEER INCIDENCE RATES^a, 2000-2004</u> | | | | | | | | | |
| REGISTRY | | | | | | | | | |
| Atlanta & Rural Georgia | 11.5 | 15.2 | 8.9 | 12.6 | 16.6 | 9.6 | 10.0 | 13.2 | 7.9 |
| Atlanta | 11.6 | 15.5 | 8.9 | 12.7 | 16.8 | 9.7 | 10.1 | 13.4 | 7.9 |
| Rural Georgia | 10.3 | 12.1 | 9.1 | 10.9 | 13.9 | 8.7 | 9.5 | - | - |
| California | 11.5 | 14.9 | 8.9 | 12.1 | 15.6 | 9.3 | 10.1 | 13.3 | 7.8 |
| Greater Bay Area | 10.7 | 14.0 | 8.3 | 11.6 | 15.0 | 9.0 | 8.8 | 10.8 | 7.4 |
| San Francisco-Oakland | 10.5 | 13.6 | 8.2 | 11.4 | 14.5 | 9.1 | 9.1 | 11.2 | 7.6 |
| San Jose-Monterey | 11.2 | 14.8 | 8.4 | 12.0 | 16.0 | 9.0 | 6.3 | - | - |
| Los Angeles | 11.4 | 14.5 | 8.9 | 12.1 | 15.5 | 9.5 | 10.4 | 13.6 | 8.0 |
| Greater California | 11.9 | 15.5 | 9.2 | 12.2 | 15.8 | 9.3 | 10.8 | 14.9 | 7.6 |
| Connecticut | 11.9 | 15.6 | 9.2 | 12.2 | 15.8 | 9.5 | 8.4 | 12.1 | 6.3 |
| Detroit | 14.1 | 17.7 | 11.4 | 14.8 | 18.7 | 11.8 | 11.4 | 14.1 | 9.5 |
| Hawaii | 10.5 | 13.2 | 8.4 | 13.5 | 17.4 | 10.2 | - | - | - |
| Iowa | 14.7 | 19.3 | 11.3 | 14.6 | 19.3 | 11.2 | 11.0 | - | - |
| Kentucky | 12.8 | 16.6 | 10.0 | 12.6 | 16.4 | 9.8 | 10.3 | 12.8 | 8.6 |
| Louisiana | 12.3 | 16.3 | 9.5 | 13.1 | 17.4 | 10.0 | 10.4 | 13.6 | 8.1 |
| New Jersey | 12.8 | 16.8 | 9.9 | 13.1 | 17.2 | 10.0 | 9.8 | 12.8 | 7.8 |
| New Mexico | 12.8 | 17.0 | 9.3 | 13.3 | 17.8 | 9.6 | 10.6 | - | - |
| Seattle-Puget Sound | 14.0 | 18.3 | 10.7 | 14.5 | 18.9 | 11.2 | 9.5 | 13.0 | 7.0 |
| Utah | 12.5 | 16.2 | 9.5 | 12.6 | 16.3 | 9.6 | - | - | - |
| 9 SEER Areas ^b | 12.7 | 16.5 | 9.8 | 13.4 | 17.4 | 10.3 | 10.1 | 12.8 | 8.3 |
| 11 SEER Areas ^b | 12.3 | 16.0 | 9.5 | 13.0 | 16.9 | 10.1 | 10.2 | 12.9 | 8.2 |
| 13 SEER Areas ^b | 12.3 | 15.9 | 9.5 | 13.0 | 16.9 | 10.1 | 10.2 | 12.8 | 8.2 |
| 17 SEER Areas ^b | 12.3 | 16.0 | 9.5 | 12.8 | 16.7 | 9.9 | 10.2 | 13.2 | 8.1 |

^a Rates are per 100,000 and are age-adjusted to the 2000 US Std Population (19 age groups - Census P25-1130)

^b The SEER 9 areas are San Francisco, Connecticut, Detroit, Hawaii, Iowa, New Mexico, Seattle, Utah and Atlanta.

The SEER 11 areas comprise the SEER 9 areas plus San Jose-Monterey and Los Angeles.

The SEER 13 areas comprise the SEER 11 areas plus the Alaska Native Registry and Rural Georgia.

The SEER 17 areas comprise the SEER 13 areas plus California excluding SF/SJM/LA, Kentucky, Louisiana and New Jersey

- Statistic not shown. Rate based on less than 16 cases for the time interval.

Table XIII-20

LEUKEMIAAGE-ADJUSTED SEER DEATH RATES^a

By Registry, Race and Sex

| | <u>All Races</u> | | | <u>Whites</u> | | | <u>Blacks</u> | | |
|--|------------------|--------------|----------------|---------------|--------------|----------------|---------------|--------------|----------------|
| | <u>Total</u> | <u>Males</u> | <u>Females</u> | <u>Total</u> | <u>Males</u> | <u>Females</u> | <u>Total</u> | <u>Males</u> | <u>Females</u> |
| <u>SEER DEATH RATES^a, 2000-2004</u> | | | | | | | | | |
| REGISTRY | | | | | | | | | |
| Atlanta & Rural Georgia | 7.2 | 9.7 | 5.6 | 7.5 | 9.9 | 5.9 | 6.9 | 9.6 | 5.3 |
| Atlanta | 7.2 | 9.7 | 5.7 | 7.5 | 10.0 | 5.8 | 7.2 | 9.9 | 5.7 |
| Rural Georgia | 6.7 | 9.2 | 4.8 | 7.9 | 9.7 | 6.7 | - | - | - |
| California | 6.9 | 9.2 | 5.3 | 7.4 | 9.8 | 5.6 | 7.0 | 9.1 | 5.4 |
| Greater Bay Area | 6.4 | 8.7 | 4.7 | 7.0 | 9.6 | 5.1 | 6.3 | 8.0 | 5.1 |
| San Francisco-Oakland | 6.3 | 8.6 | 4.6 | 6.9 | 9.5 | 5.1 | 6.0 | 8.0 | 4.7 |
| San Jose-Monterey | 6.6 | 9.0 | 4.9 | 7.2 | 9.8 | 5.3 | 8.0 | - | - |
| Los Angeles | 6.7 | 8.7 | 5.3 | 7.2 | 9.4 | 5.6 | 7.4 | 9.5 | 5.9 |
| Greater California | 7.2 | 9.6 | 5.5 | 7.5 | 10.0 | 5.7 | 6.9 | 9.5 | 5.0 |
| Connecticut | 7.2 | 9.6 | 5.6 | 7.3 | 9.7 | 5.6 | 6.0 | 8.5 | 5.1 |
| Detroit | 8.2 | 10.9 | 6.3 | 8.5 | 11.6 | 6.4 | 6.9 | 8.1 | 6.0 |
| Hawaii | 5.7 | 7.6 | 4.1 | 8.1 | 10.6 | 6.1 | - | - | - |
| Iowa | 8.4 | 11.5 | 6.3 | 8.4 | 11.5 | 6.3 | 12.3 | - | - |
| Kentucky | 7.7 | 10.3 | 6.0 | 7.8 | 10.3 | 6.0 | 7.2 | 9.5 | 6.0 |
| Louisiana | 7.9 | 10.7 | 6.0 | 8.0 | 10.8 | 6.1 | 7.6 | 10.5 | 5.7 |
| New Jersey | 7.4 | 9.7 | 5.7 | 7.6 | 10.0 | 6.0 | 6.1 | 8.5 | 4.6 |
| New Mexico | 6.6 | 9.0 | 4.8 | 6.8 | 9.3 | 5.0 | - | - | - |
| Seattle-Puget Sound | 7.9 | 10.5 | 6.0 | 8.2 | 10.8 | 6.3 | 6.6 | 9.2 | - |
| Utah | 7.1 | 9.3 | 5.4 | 7.1 | 9.4 | 5.4 | - | - | - |
| 9 SEER Areas ^b | 7.3 | 9.8 | 5.6 | 7.7 | 10.4 | 5.8 | 6.7 | 8.6 | 5.5 |
| 11 SEER Areas ^b | 7.2 | 9.5 | 5.5 | 7.6 | 10.2 | 5.8 | 6.9 | 8.8 | 5.6 |
| 13 SEER Areas ^b | 7.2 | 9.5 | 5.5 | 7.6 | 10.2 | 5.8 | 6.9 | 8.8 | 5.6 |
| 17 SEER Areas ^b | 7.3 | 9.7 | 5.6 | 7.6 | 10.2 | 5.8 | 6.9 | 9.2 | 5.4 |
| Total U.S. | 7.5 | 10.0 | 5.7 | 7.7 | 10.3 | 5.8 | 6.7 | 8.8 | 5.3 |

^a NCHS public use data file for the total US. Rates are per 100,000 and are age-adjusted to the 2000 US Std Population (19 age groups - Census P25-1130).

^b The SEER 9 areas are San Francisco, Connecticut, Detroit, Hawaii, Iowa, New Mexico, Seattle, Utah and Atlanta.

The SEER 11 areas comprise the SEER 9 areas plus San Jose-Monterey and Los Angeles.

The SEER 13 areas comprise the SEER 11 areas plus the Alaska Native Registry and Rural Georgia.

The SEER 17 areas comprise the SEER 13 areas plus California excluding SF/SJM/LA, Kentucky, Louisiana and New Jersey

- Statistic not shown. Rate based on less than 16 cases for the time interval.

Table XIII-21
LEUKEMIAAVERAGE ANNUAL AGE-ADJUSTED CANCER DEATH^a RATES BY STATE, ALL RACES, 2000-2004

Males and Females

| State | Rate | SE | Rank | PD | State | Rate | SE | Rank | PD |
|----------------------|------------------|------|------|--------------------|----------------|------------------|------|------|-------|
| TOTAL U.S. | 7.5 | 0.02 | | | | | | | |
| High Five States | | | | | | | | | |
| Iowa | 8.4 ^b | 0.22 | (01) | 12.0 | | | | | |
| Delaware | 8.4 | 0.45 | (02) | 12.0 | | | | | |
| Idaho | 8.3 | 0.37 | (03) | 10.7 | | | | | |
| Wisconsin | 8.2 ^b | 0.17 | (04) | 9.3 | | | | | |
| Arkansas | 8.2 | 0.24 | (05) | 9.3 | | | | | |
| Low Five States | | | | | | | | | |
| Arizona | 6.8 ^b | 0.16 | (47) | -9.3 | | | | | |
| Wyoming | 6.7 | 0.53 | (48) | -10.7 | | | | | |
| New Mexico | 6.6 | 0.27 | (49) | -12.0 | | | | | |
| Alaska | 6.4 | 0.65 | (50) | -14.7 | | | | | |
| Hawaii | 5.7 ^b | 0.29 | (51) | -24.0 ^c | | | | | |
| Alabama | 7.5 | 0.18 | (27) | 0.0 | Montana | 7.7 | 0.39 | (22) | 2.7 |
| Alaska | 6.4 | 0.65 | (50) | -14.7 | Nebraska | 7.8 | 0.29 | (20) | 4.0 |
| Arizona | 6.8 ^b | 0.16 | (47) | -9.3 | Nevada | 7.7 | 0.29 | (23) | 2.7 |
| Arkansas | 8.2 | 0.24 | (05) | 9.3 | New Hampshire | 7.1 | 0.34 | (41) | -5.3 |
| California | 6.9 ^b | 0.07 | (44) | -8.0 | New Jersey | 7.4 | 0.13 | (31) | -1.3 |
| Colorado | 7.1 | 0.20 | (40) | -5.3 | New Mexico | 6.6 | 0.27 | (49) | -12.0 |
| Connecticut | 7.2 | 0.19 | (37) | -4.0 | New York | 7.0 ^b | 0.08 | (43) | -6.7 |
| Delaware | 8.4 | 0.45 | (02) | 12.0 | North Carolina | 7.2 | 0.13 | (38) | -4.0 |
| District of Columbia | 6.8 | 0.50 | (46) | -9.3 | North Dakota | 7.3 | 0.44 | (35) | -2.7 |
| Florida | 7.3 | 0.08 | (34) | -2.7 | Ohio | 7.8 | 0.11 | (19) | 4.0 |
| Georgia | 7.4 | 0.15 | (32) | -1.3 | Oklahoma | 8.1 | 0.21 | (08) | 8.0 |
| Hawaii | 5.7 ^b | 0.29 | (51) | -24.0 ^c | Oregon | 7.4 | 0.20 | (30) | -1.3 |
| Idaho | 8.3 | 0.37 | (03) | 10.7 | Pennsylvania | 7.6 | 0.10 | (26) | 1.3 |
| Illinois | 8.0 ^b | 0.11 | (10) | 6.7 | Rhode Island | 6.8 | 0.34 | (45) | -9.3 |
| Indiana | 8.0 | 0.16 | (09) | 6.7 | South Carolina | 7.5 | 0.19 | (29) | 0.0 |
| Iowa | 8.4 ^b | 0.22 | (01) | 12.0 | South Dakota | 8.1 | 0.44 | (07) | 8.0 |
| Kansas | 8.0 | 0.24 | (12) | 6.7 | Tennessee | 7.9 | 0.17 | (13) | 5.3 |
| Kentucky | 7.7 | 0.20 | (21) | 2.7 | Texas | 7.6 | 0.09 | (25) | 1.3 |
| Louisiana | 7.9 | 0.19 | (15) | 5.3 | Utah | 7.1 | 0.29 | (39) | -5.3 |
| Maine | 7.2 | 0.31 | (36) | -4.0 | Vermont | 7.7 | 0.49 | (24) | 2.7 |
| Maryland | 7.5 | 0.17 | (28) | 0.0 | Virginia | 7.3 | 0.15 | (33) | -2.7 |
| Massachusetts | 7.1 | 0.14 | (42) | -5.3 | Washington | 7.8 | 0.17 | (18) | 4.0 |
| Michigan | 7.9 | 0.13 | (16) | 5.3 | West Virginia | 7.8 | 0.27 | (17) | 4.0 |
| Minnesota | 8.2 ^b | 0.18 | (06) | 9.3 | Wisconsin | 8.2 ^b | 0.17 | (04) | 9.3 |
| Mississippi | 7.9 | 0.24 | (14) | 5.3 | Wyoming | 6.7 | 0.53 | (48) | -10.7 |
| Missouri | 8.0 | 0.16 | (11) | 6.7 | | | | | |

^a NCHS public use data file. Rates are per 100,000 and are age-adjusted to the 2000 US Std Population (19 age groups - Census P25-1130).

^b Difference between state rate and total U.S. rate is statistically significant ($p < .0002$).

^c Absolute percent difference between state rate and total U.S. rate is 15% or more.

SE Standard error of the rate.

PD Percent difference between state rate and total U.S. rate.

Table XIII-22
LEUKEMIAAVERAGE ANNUAL AGE-ADJUSTED CANCER DEATH^a RATES BY STATE, ALL RACES, 2000-2004

Males

| State | Rate | SE | Rank | PD | State | Rate | SE | Rank | PD |
|----------------------|-------------------|------|------|--------------------|----------------|------------------|------|------|-------------------|
| TOTAL U.S. | 10.0 | 0.04 | | | | | | | |
| High Five States | | | | | | | | | |
| Arkansas | 11.6 ^b | 0.45 | (01) | 16.0 ^c | | | | | |
| North Dakota | 11.5 | 0.86 | (02) | 15.0 ^c | | | | | |
| Iowa | 11.5 ^b | 0.40 | (03) | 15.0 ^c | | | | | |
| Minnesota | 11.3 ^b | 0.33 | (04) | 13.0 | | | | | |
| South Dakota | 11.2 | 0.78 | (05) | 12.0 | | | | | |
| Low Five States | | | | | | | | | |
| Rhode Island | 9.1 | 0.61 | (47) | -9.0 | | | | | |
| New Mexico | 9.0 | 0.49 | (48) | -10.0 | | | | | |
| Arizona | 8.8 ^b | 0.27 | (49) | -12.0 | | | | | |
| Alaska | 8.6 | 1.18 | (50) | -14.0 | | | | | |
| Hawaii | 7.6 ^b | 0.51 | (51) | -24.0 ^c | | | | | |
| Alabama | 10.2 | 0.34 | (25) | 2.0 | Montana | 10.5 | 0.71 | (17) | 5.0 |
| Alaska | 8.6 | 1.18 | (50) | -14.0 | Nebraska | 10.6 | 0.53 | (12) | 6.0 |
| Arizona | 8.8 ^b | 0.27 | (49) | -12.0 | Nevada | 10.1 | 0.50 | (30) | 1.0 |
| Arkansas | 11.6 ^b | 0.45 | (01) | 16.0 ^c | New Hampshire | 10.1 | 0.63 | (29) | 1.0 |
| California | 9.2 ^b | 0.12 | (46) | -8.0 | New Jersey | 9.7 | 0.23 | (38) | -3.0 |
| Colorado | 9.7 | 0.37 | (39) | -3.0 | New Mexico | 9.0 | 0.49 | (48) | -10.0 |
| Connecticut | 9.6 | 0.35 | (42) | -4.0 | New York | 9.3 ^b | 0.15 | (44) | -7.0 |
| Delaware | 10.9 | 0.81 | (07) | 9.0 | North Carolina | 9.6 | 0.25 | (41) | -4.0 |
| District of Columbia | 9.7 | 0.96 | (40) | -3.0 | North Dakota | 11.5 | 0.86 | (02) | 15.0 ^c |
| Florida | 9.8 | 0.15 | (33) | -2.0 | Ohio | 10.5 | 0.21 | (16) | 5.0 |
| Georgia | 9.8 | 0.28 | (36) | -2.0 | Oklahoma | 10.9 | 0.39 | (08) | 9.0 |
| Hawaii | 7.6 ^b | 0.51 | (51) | -24.0 ^c | Oregon | 9.8 | 0.36 | (34) | -2.0 |
| Idaho | 10.4 | 0.63 | (19) | 4.0 | Pennsylvania | 10.4 | 0.19 | (20) | 4.0 |
| Illinois | 11.0 ^b | 0.21 | (06) | 10.0 | Rhode Island | 9.1 | 0.61 | (47) | -9.0 |
| Indiana | 10.9 | 0.30 | (09) | 9.0 | South Carolina | 10.3 | 0.37 | (23) | 3.0 |
| Iowa | 11.5 ^b | 0.40 | (03) | 15.0 ^c | South Dakota | 11.2 | 0.78 | (05) | 12.0 |
| Kansas | 10.6 | 0.42 | (14) | 6.0 | Tennessee | 10.6 | 0.31 | (13) | 6.0 |
| Kentucky | 10.3 | 0.36 | (24) | 3.0 | Texas | 10.1 | 0.17 | (27) | 1.0 |
| Louisiana | 10.7 | 0.36 | (11) | 7.0 | Utah | 9.3 | 0.51 | (43) | -7.0 |
| Maine | 10.2 | 0.58 | (26) | 2.0 | Vermont | 10.0 | 0.87 | (32) | 0.0 |
| Maryland | 10.1 | 0.32 | (28) | 1.0 | Virginia | 9.7 | 0.27 | (37) | -3.0 |
| Massachusetts | 9.2 | 0.26 | (45) | -8.0 | Washington | 10.5 | 0.30 | (18) | 5.0 |
| Michigan | 10.4 | 0.23 | (21) | 4.0 | West Virginia | 10.4 | 0.49 | (22) | 4.0 |
| Minnesota | 11.3 ^b | 0.33 | (04) | 13.0 | Wisconsin | 10.5 | 0.30 | (15) | 5.0 |
| Mississippi | 10.0 | 0.43 | (31) | 0.0 | Wyoming | 9.8 | 1.01 | (35) | -2.0 |
| Missouri | 10.8 | 0.30 | (10) | 8.0 | | | | | |

^a NCHS public use data file. Rates are per 100,000 and are age-adjusted to the 2000 US Std Population (19 age groups - Census P25-1130).

^b Difference between state rate and total U.S. rate is statistically significant ($p < .0002$).

^c Absolute percent difference between state rate and total U.S. rate is 15% or more.

SE Standard error of the rate.

PD Percent difference between state rate and total U.S. rate.

Table XIII-23
LEUKEMIAAVERAGE ANNUAL AGE-ADJUSTED CANCER DEATH^a RATES BY STATE, ALL RACES, 2000-2004

Females

| State | Rate | SE | Rank | PD | State | Rate | SE | Rank | PD |
|----------------------|------------------|------|------|--------------------|----------------|------------------|------|------|--------------------|
| TOTAL U.S. | 5.7 | 0.03 | | | | | | | |
| High Five States | | | | | | | | | |
| Delaware | 6.7 | 0.53 | (01) | 17.5 ^c | | | | | |
| Idaho | 6.6 | 0.44 | (02) | 15.8 ^c | | | | | |
| Wisconsin | 6.6 ^b | 0.20 | (03) | 15.8 ^c | | | | | |
| Mississippi | 6.5 | 0.28 | (04) | 14.0 | | | | | |
| Iowa | 6.3 | 0.25 | (05) | 10.5 | | | | | |
| Low Five States | | | | | | | | | |
| New Mexico | 4.8 | 0.31 | (47) | -15.8 ^c | | | | | |
| Wyoming | 4.6 | 0.58 | (48) | -19.3 ^c | | | | | |
| North Dakota | 4.4 | 0.46 | (49) | -22.8 ^c | | | | | |
| Alaska | 4.4 | 0.72 | (50) | -22.8 ^c | | | | | |
| Hawaii | 4.1 ^b | 0.34 | (51) | -28.1 ^c | | | | | |
| Alabama | 5.8 | 0.21 | (25) | 1.8 | Montana | 5.7 | 0.46 | (30) | 0.0 |
| Alaska | 4.4 | 0.72 | (50) | -22.8 ^c | Nebraska | 5.8 | 0.33 | (21) | 1.8 |
| Arizona | 5.1 | 0.18 | (44) | -10.5 | Nevada | 5.7 | 0.34 | (29) | 0.0 |
| Arkansas | 5.9 | 0.27 | (19) | 3.5 | New Hampshire | 5.0 | 0.38 | (45) | -12.3 |
| California | 5.3 ^b | 0.08 | (42) | -7.0 | New Jersey | 5.7 | 0.15 | (27) | 0.0 |
| Colorado | 5.3 | 0.23 | (40) | -7.0 | New Mexico | 4.8 | 0.31 | (47) | -15.8 ^c |
| Connecticut | 5.6 | 0.23 | (35) | -1.8 | New York | 5.4 | 0.10 | (37) | -5.3 |
| Delaware | 6.7 | 0.53 | (01) | 17.5 ^c | North Carolina | 5.5 | 0.15 | (36) | -3.5 |
| District of Columbia | 4.8 | 0.54 | (46) | -15.8 ^c | North Dakota | 4.4 | 0.46 | (49) | -22.8 ^c |
| Florida | 5.3 ^b | 0.10 | (41) | -7.0 | Ohio | 6.0 | 0.13 | (18) | 5.3 |
| Georgia | 5.8 | 0.17 | (24) | 1.8 | Oklahoma | 6.1 | 0.24 | (11) | 7.0 |
| Hawaii | 4.1 ^b | 0.34 | (51) | -28.1 ^c | Oregon | 5.6 | 0.24 | (33) | -1.8 |
| Idaho | 6.6 | 0.44 | (02) | 15.8 ^c | Pennsylvania | 5.6 | 0.12 | (32) | -1.8 |
| Illinois | 6.1 | 0.13 | (14) | 7.0 | Rhode Island | 5.3 | 0.40 | (39) | -7.0 |
| Indiana | 6.2 | 0.19 | (06) | 8.8 | South Carolina | 5.7 | 0.22 | (31) | 0.0 |
| Iowa | 6.3 | 0.25 | (05) | 10.5 | South Dakota | 5.7 | 0.49 | (28) | 0.0 |
| Kansas | 6.1 | 0.27 | (13) | 7.0 | Tennessee | 6.2 | 0.19 | (07) | 8.8 |
| Kentucky | 6.0 | 0.23 | (16) | 5.3 | Texas | 5.8 | 0.11 | (22) | 1.8 |
| Louisiana | 6.0 | 0.22 | (17) | 5.3 | Utah | 5.4 | 0.34 | (38) | -5.3 |
| Maine | 5.2 | 0.35 | (43) | -8.8 | Vermont | 6.1 | 0.59 | (10) | 7.0 |
| Maryland | 5.8 | 0.20 | (23) | 1.8 | Virginia | 5.8 | 0.17 | (26) | 1.8 |
| Massachusetts | 5.6 | 0.17 | (34) | -1.8 | Washington | 5.9 | 0.19 | (20) | 3.5 |
| Michigan | 6.1 | 0.15 | (08) | 7.0 | West Virginia | 6.0 | 0.32 | (15) | 5.3 |
| Minnesota | 6.1 | 0.21 | (09) | 7.0 | Wisconsin | 6.6 ^b | 0.20 | (03) | 15.8 ^c |
| Mississippi | 6.5 | 0.28 | (04) | 14.0 | Wyoming | 4.6 | 0.58 | (48) | -19.3 ^c |
| Missouri | 6.1 | 0.19 | (12) | 7.0 | | | | | |

^a NCHS public use data file. Rates are per 100,000 and are age-adjusted to the 2000 US Std Population (19 age groups - Census P25-1130).

^b Difference between state rate and total U.S. rate is statistically significant ($p < .0002$).

^c Absolute percent difference between state rate and total U.S. rate is 15% or more.

SE Standard error of the rate.

PD Percent difference between state rate and total U.S. rate.

Table XIII-24
LEUKEMIA (Invasive)Estimated United States Cancer Prevalence Counts^a on January 1, 2004
By Race/Ethnicity, Sex and Years Since Diagnosis

| Years Since Diagnosis | 0 to <5 | 5 to <10 | 10 to <15 | 15 to <20 | 20 to <25 | 0 to <14 ^e | 0 to <29 ^e | >=29 ^g | Complete ^h |
|-------------------------------------|---------|----------|-----------|-----------|-----------|-----------------------|-----------------------|-------------------|-----------------------|
| Race/Sex | | | | | | | | | |
| All Races ^b | 86,548 | 50,210 | 30,629 | 18,629 | 10,673 | 162,426 | 202,266 | 6,354 | 208,620 |
| Males | 50,266 | 28,357 | 17,336 | 10,330 | 5,879 | 93,201 | 114,783 | 2,988 | 117,771 |
| Females | 36,282 | 21,853 | 13,293 | 8,299 | 4,794 | 69,225 | 87,483 | 3,366 | 90,849 |
| White ^b | 76,866 | 45,030 | 27,828 | 16,850 | 9,713 | 145,205 | 181,450 | 5,401 | 186,851 |
| Males | 44,967 | 25,258 | 16,033 | 9,439 | 5,360 | 83,717 | 103,537 | 2,196 | 105,733 |
| Females | 31,899 | 19,772 | 11,795 | 7,411 | 4,353 | 61,488 | 77,913 | 3,205 | 81,118 |
| Black ^b | 5,588 | 2,964 | 1,544 | 1,023 | 580 | 9,906 | 11,995 | 627 | 12,622 |
| Males | 2,851 | 1,625 | 700 | 494 | 323 | 5,083 | 6,092 | 299 | 6,391 |
| Females | 2,737 | 1,339 | 844 | 529 | 257 | 4,823 | 5,903 | 328 | 6,231 |
| Asian/Pacific Islander ^c | 1,898 | 1,097 | + | + | + | 3,582 | + | + | + |
| Males | 1,118 | 617 | + | + | + | 2,049 | + | + | + |
| Females | 780 | 480 | + | + | + | 1,533 | + | + | + |
| Hispanic ^d | 6,815 | 4,066 | + | + | + | 13,223 | + | + | + |
| Males | 3,814 | 2,334 | + | + | + | 7,508 | + | + | + |
| Females | 3,001 | 1,732 | + | + | + | 5,715 | + | + | + |

Estimated prevalence percent^a on January 1, 2004, of the SEER 11 population diagnosed in the previous 10 years
By Age at Prevalence, Race/Ethnicity and Sex

| Age at Prevalence | Age Specific (Crude) | | | | | | | | | | Age-Adjusted ^f |
|-------------------------------------|----------------------|---------|---------|---------|---------|---------|---------|---------|---------|---------|---------------------------|
| | All Ages | 0-9 | 10-19 | 20-29 | 30-39 | 40-49 | 50-59 | 60-69 | 70-79 | 80+ | All Ages |
| Race/Sex | | | | | | | | | | | |
| All Races ^c | 0.0424% | 0.0276% | 0.0310% | 0.0130% | 0.0149% | 0.0245% | 0.0478% | 0.1067% | 0.1545% | 0.1706% | 0.0441% |
| Males | 0.0495% | 0.0289% | 0.0341% | 0.0144% | 0.0171% | 0.0304% | 0.0609% | 0.1401% | 0.2106% | 0.2318% | 0.0555% |
| Females | 0.0354% | 0.0262% | 0.0278% | 0.0116% | 0.0126% | 0.0186% | 0.0355% | 0.0768% | 0.1121% | 0.1371% | 0.0348% |
| White ^c | 0.0476% | 0.0307% | 0.0346% | 0.0146% | 0.0157% | 0.0259% | 0.0510% | 0.1176% | 0.1708% | 0.1861% | 0.0483% |
| Males | 0.0552% | 0.0321% | 0.0375% | 0.0158% | 0.0178% | 0.0319% | 0.0646% | 0.1542% | 0.2311% | 0.2545% | 0.0604% |
| Females | 0.0399% | 0.0292% | 0.0315% | 0.0133% | 0.0135% | 0.0197% | 0.0376% | 0.0839% | 0.1243% | 0.1491% | 0.0382% |
| Black ^c | 0.0223% | 0.0106% | 0.0172% | 0.0072% | 0.0111% | 0.0164% | 0.0358% | 0.0638% | 0.1056% | 0.0873% | 0.0270% |
| Males | 0.0254% | 0.0095% | 0.0189% | 0.0081% | 0.0132% | 0.0218% | 0.0459% | 0.0800% | 0.1440% | 0.0929% | 0.0332% |
| Females | 0.0196% | 0.0117% | 0.0155% | 0.0065% | 0.0093% | 0.0117% | 0.0273% | 0.0511% | 0.0803% | 0.0846% | 0.0224% |
| Asian/Pacific Islander ^c | 0.0232% | 0.0261% | 0.0243% | 0.0099% | 0.0138% | 0.0186% | 0.0250% | 0.0473% | 0.0483% | 0.0520% | 0.0244% |
| Males | 0.0278% | 0.0291% | 0.0289% | 0.0126% | 0.0168% | 0.0222% | 0.0287% | 0.0576% | 0.0637% | 0.0835% | 0.0300% |
| Females | 0.0190% | 0.0228% | 0.0194% | 0.0073% | 0.0109% | 0.0153% | 0.0217% | 0.0386% | 0.0372% | 0.0311% | 0.0195% |
| Hispanic ^d | 0.0269% | 0.0296% | 0.0365% | 0.0139% | 0.0150% | 0.0193% | 0.0311% | 0.0592% | 0.0739% | 0.0789% | 0.0315% |
| Males | 0.0295% | 0.0305% | 0.0391% | 0.0161% | 0.0174% | 0.0212% | 0.0351% | 0.0708% | 0.1083% | 0.1089% | 0.0374% |
| Females | 0.0243% | 0.0287% | 0.0337% | 0.0113% | 0.0122% | 0.0173% | 0.0275% | 0.0496% | 0.0493% | 0.0617% | 0.0267% |

^a US 2004 cancer prevalence counts are based on 2004 cancer prevalence proportions from the SEER registries and 1/1/2004 US population estimates based on the average of 2003 and 2004 population estimates from the US Bureau of the Census. Prevalence was calculated using the First Malignant Primary Only for a person.

^{b c d} Statistics based on (b) SEER 9 Areas (c) SEER 11 Areas and Rural Georgia (d) NHIA for Hispanic for SEER 11 Areas and Rural Georgia.

^e Maximum limited-duration prevalence: 29 years for 1975-2004 SEER 9 data; 14 years for 1990-2004 SEER 11 data (used to calculate prevalence for Hispanics and Asian Pacific Islanders).

^f Percentages are age-adjusted to the 2000 US Standard Population (19 age groups - Census P25-1130) by 5-year age groups.

^{g h} (g) Cases diagnosed more than 29 years ago were estimated using the completeness index method (Capocaccia et. al. 1997, Merrill et. al. 2000). (h) Complete prevalence is obtained by summing 0 to <29 and >=29.

- Statistic not shown. Statistic based on fewer than 5 cases estimated alive in SEER for the time interval.

+ Not available.

Table XIII-25
ACUTE LYMPHOCYTIC LEUKEMIA (Invasive)

Estimated United States Cancer Prevalence Counts^a on January 1, 2004
By Race/Ethnicity, Sex and Years Since Diagnosis

| Years Since Diagnosis | 0 to <5 | 5 to <10 | 10 to <15 | 15 to <20 | 20 to <25 | 0 to <14 ^e | 0 to <29 ^e | >=29 ^g | Complete ^h |
|-------------------------------------|---------|----------|-----------|-----------|-----------|-----------------------|-----------------------|-------------------|-----------------------|
| Race/Sex | | | | | | | | | |
| All Races ^b | 13,978 | 11,128 | 9,163 | 7,176 | 5,427 | 32,415 | 49,880 | 3,527 | 53,407 |
| Males | 7,914 | 6,233 | 5,014 | 3,943 | 2,826 | 18,126 | 27,421 | 1,913 | 29,334 |
| Females | 6,064 | 4,895 | 4,149 | 3,233 | 2,601 | 14,289 | 22,459 | 1,614 | 24,073 |
| White ^b | 12,171 | 9,655 | 8,009 | 6,310 | 4,948 | 28,208 | 43,888 | + | + |
| Males | 6,920 | 5,368 | 4,522 | 3,503 | 2,595 | 15,899 | 24,331 | + | + |
| Females | 5,251 | 4,287 | 3,487 | 2,807 | 2,353 | 12,309 | 19,557 | + | + |
| Black ^b | 870 | 767 | 652 | 416 | 244 | 2,162 | 3,093 | + | + |
| Males | 436 | 451 | 284 | 205 | 120 | 1,091 | 1,549 | + | + |
| Females | 434 | 316 | 368 | 211 | 124 | 1,071 | 1,544 | + | + |
| Asian/Pacific Islander ^c | 573 | 456 | + | + | + | 1,314 | + | + | + |
| Males | 344 | 274 | + | + | + | 750 | + | + | + |
| Females | 229 | 182 | + | + | + | 564 | + | + | + |
| Hispanic ^d | 3,210 | 2,295 | + | + | + | 6,802 | + | + | + |
| Males | 1,753 | 1,319 | + | + | + | 3,825 | + | + | + |
| Females | 1,457 | 976 | + | + | + | 2,977 | + | + | + |

Estimated prevalence percent^a on January 1, 2004, of the SEER 11 population diagnosed in the previous 10 years
By Age at Prevalence, Race/Ethnicity and Sex

| Age at Prevalence | Age Specific (Crude) | | | | | | | | | | Age-Adjusted ^f |
|-------------------------------------|----------------------|---------|---------|---------|---------|---------|---------|---------|---------|---------|---------------------------|
| | All Ages | 0-9 | 10-19 | 20-29 | 30-39 | 40-49 | 50-59 | 60-69 | 70-79 | 80+ | All Ages |
| Race/Sex | | | | | | | | | | | |
| All Races ^c | 0.0092% | 0.0237% | 0.0262% | 0.0064% | 0.0028% | 0.0020% | 0.0023% | 0.0024% | 0.0012% | 0.0011% | 0.0093% |
| Males | 0.0105% | 0.0248% | 0.0291% | 0.0081% | 0.0034% | 0.0022% | 0.0023% | 0.0029% | 0.0015% | 0.0011% | 0.0103% |
| Females | 0.0080% | 0.0226% | 0.0231% | 0.0046% | 0.0022% | 0.0018% | 0.0023% | 0.0020% | 0.0011% | 0.0011% | 0.0083% |
| White ^c | 0.0102% | 0.0267% | 0.0298% | 0.0077% | 0.0030% | 0.0022% | 0.0024% | 0.0025% | 0.0014% | 0.0010% | 0.0105% |
| Males | 0.0115% | 0.0279% | 0.0327% | 0.0093% | 0.0037% | 0.0023% | 0.0025% | 0.0031% | 0.0015% | - | 0.0115% |
| Females | 0.0090% | 0.0255% | 0.0268% | 0.0060% | 0.0023% | 0.0020% | 0.0023% | 0.0020% | 0.0013% | 0.0011% | 0.0095% |
| Black ^c | 0.0041% | 0.0078% | 0.0119% | 0.0022% | 0.0011% | - | - | - | - | - | 0.0036% |
| Males | 0.0046% | 0.0069% | 0.0129% | 0.0034% | - | - | - | - | - | - | 0.0039% |
| Females | 0.0036% | 0.0087% | 0.0109% | - | 0.0013% | - | - | - | - | - | 0.0033% |
| Asian/Pacific Islander ^c | 0.0073% | 0.0216% | 0.0199% | 0.0034% | 0.0028% | 0.0022% | 0.0027% | 0.0028% | - | - | 0.0079% |
| Males | 0.0091% | 0.0237% | 0.0251% | 0.0060% | 0.0031% | 0.0026% | 0.0027% | - | - | - | 0.0093% |
| Females | 0.0057% | 0.0193% | 0.0144% | - | 0.0026% | 0.0020% | 0.0027% | 0.0039% | - | - | 0.0064% |
| Hispanic ^d | 0.0138% | 0.0261% | 0.0316% | 0.0077% | 0.0036% | 0.0035% | 0.0037% | 0.0048% | - | - | 0.0114% |
| Males | 0.0149% | 0.0268% | 0.0344% | 0.0095% | 0.0043% | 0.0038% | 0.0032% | 0.0048% | - | - | 0.0122% |
| Females | 0.0126% | 0.0255% | 0.0286% | 0.0054% | 0.0027% | 0.0031% | 0.0041% | 0.0048% | - | - | 0.0105% |

^a US 2004 cancer prevalence counts are based on 2004 cancer prevalence proportions from the SEER registries and 1/1/2004 US population estimates based on the average of 2003 and 2004 population estimates from the US Bureau of the Census. Prevalence was calculated using the First Malignant Primary Only for a person.

^{b c d} Statistics based on (b) SEER 9 Areas (c) SEER 11 Areas and Rural Georgia (d) NHIA for Hispanic for SEER 11 Areas and Rural Georgia.

^e Maximum limited-duration prevalence: 29 years for 1975-2004 SEER 9 data; 14 years for 1990-2004 SEER 11 data (used to calculate prevalence for Hispanics and Asian Pacific Islanders).

^f Percentages are age-adjusted to the 2000 US Standard Population (19 age groups - Census P25-1130) by 5-year age groups.

^{g h} (g) Cases diagnosed more than 29 years ago were estimated using the completeness index method (Capocaccia et. al. 1997, Merrill et. al. 2000). (h) Complete prevalence is obtained by summing 0 to <29 and >=29.

- Statistic not shown. Statistic based on fewer than 5 cases estimated alive in SEER for the time interval.

+ Not available.

SEER Incidence, Delay Adjusted Incidence and US Death Rates^a Leukemia, by Race and Sex

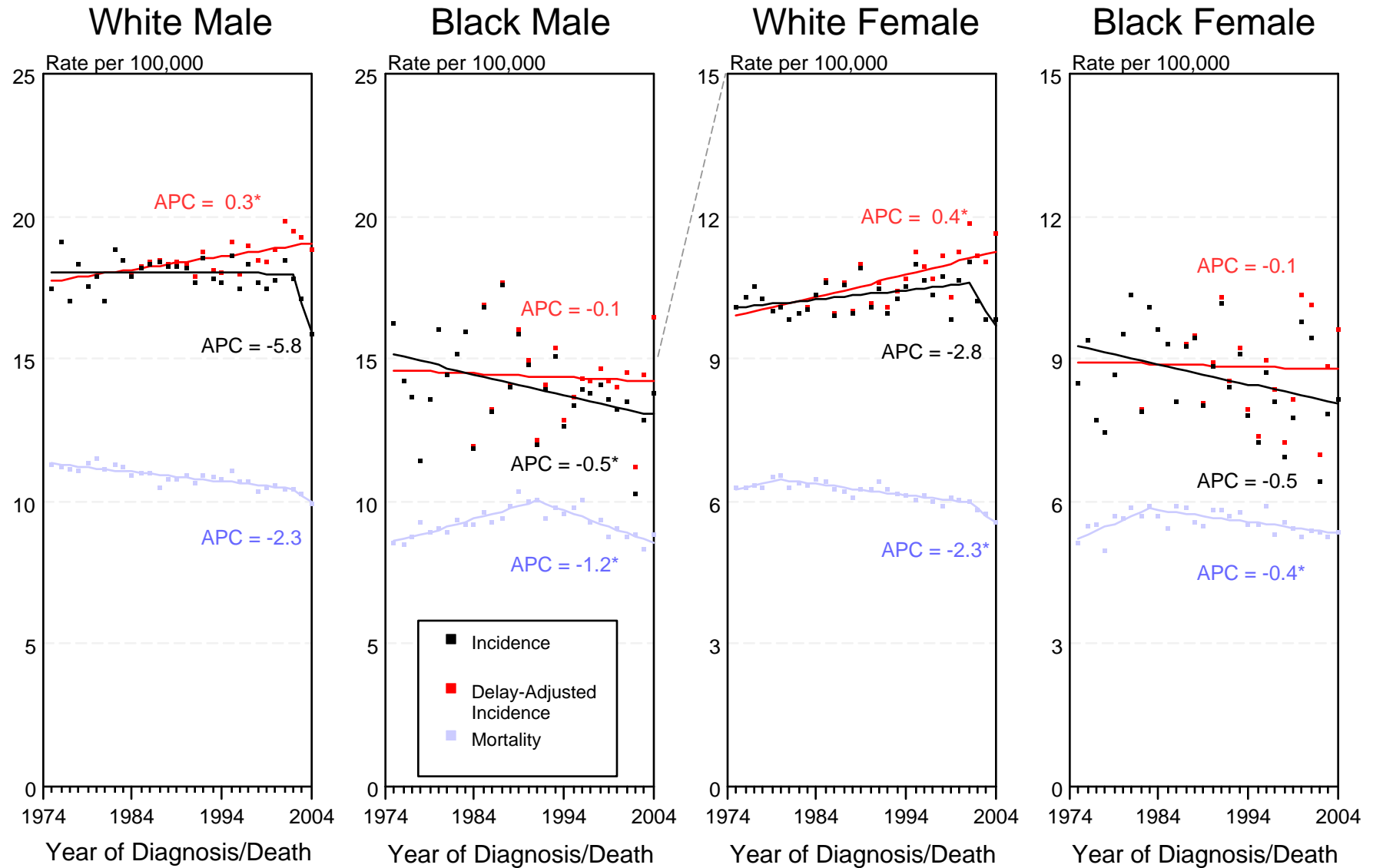


Figure XIII-1

^a Source: SEER 9 areas and NCHS public use data file for the total US. Rates are age-adjusted to the 2000 US Std Population (19 age groups - Census P25-1103). Regression lines and APCs are calculated using the Joinpoint Regression Program Version 3.0, April 2005, National Cancer Institute.

The APC is the Annual Percent Change for the regression line segments. The APC shown on the graph is for the most recent trend.

* The APC is significantly different from zero ($p < 0.05$).

SEER Incidence Rates^a Lymphocytic and Myeloid Leukemia (Acute and Chronic), by Sex

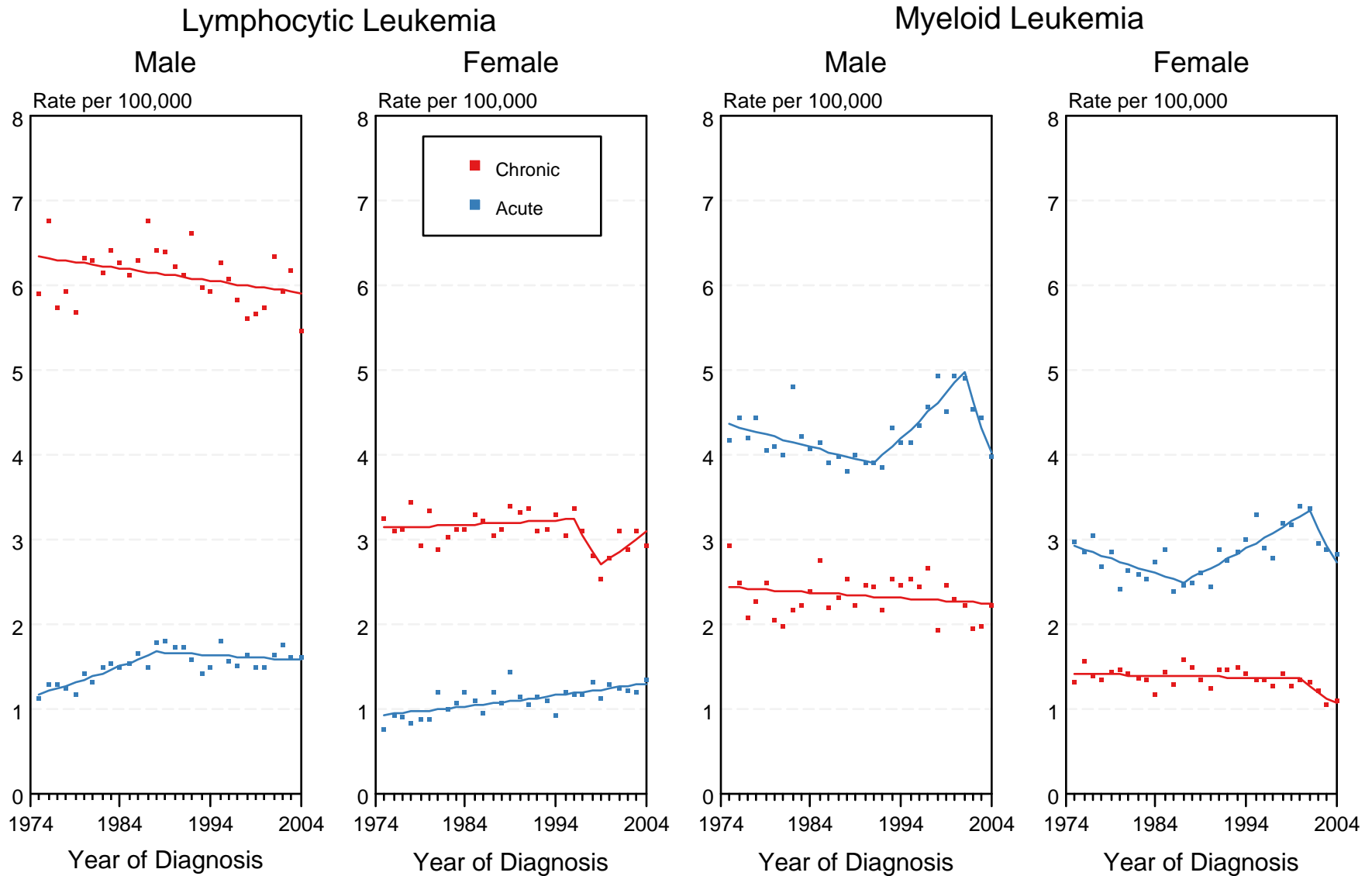


Figure XIII-2

^a Source: SEER 9 areas. Rates are age-adjusted to the 2000 US Std Population (19 age groups - Census P25-1103). Regression lines and APCs are calculated using the Joinpoint Regression Program Version 3.0, April 2005, National Cancer Institute. The APC is the Annual Percent Change for the regression line segments. The APC shown on the graph is for the most recent trend.

* The APC is significantly different from zero ($p < 0.05$).

SEER Incidence and US Death Rates^a Leukemia, Both Sexes

Joinpoint Analyses for Whites and Blacks from 1975-2004
and for Asian/Pacific Islanders, American Indians/Alaska Natives and Hispanics from 1992-2004

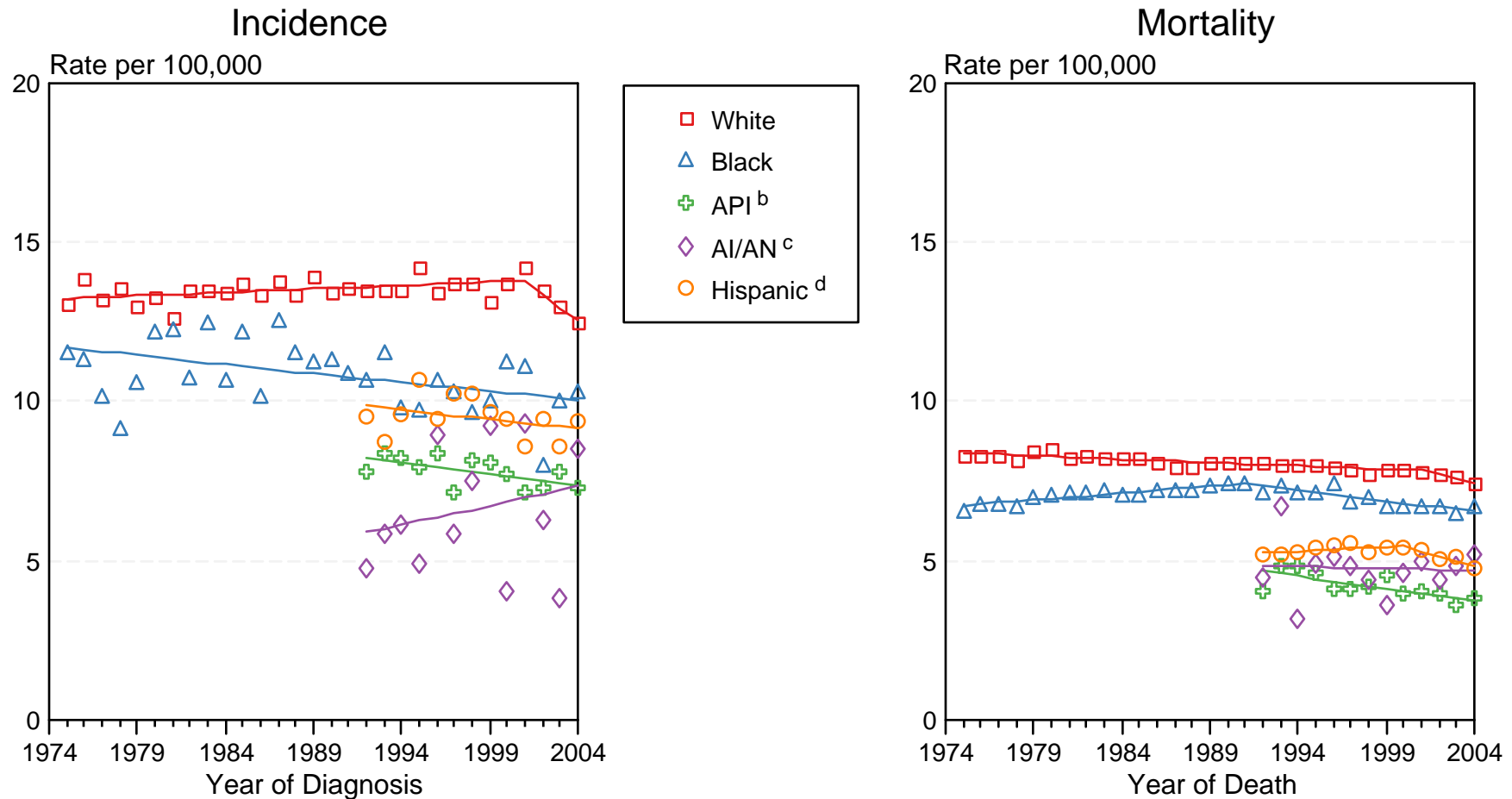


Figure XIII-3

Source: Incidence data for whites and blacks are from the SEER 9 areas (San Francisco, Connecticut, Detroit, Hawaii, Iowa, New Mexico, Seattle, Utah, Atlanta). Incidence data for Asian/Pacific Islanders, American Indians/Alaska Natives and Hispanics are from the SEER 13 Areas (SEER 9 Areas, San Jose-Monterey, Los Angeles, Alaska Native Registry and Rural Georgia). Mortality data are from NCHS public use data file for the total US.

^a Rates are age-adjusted to the 2000 US Std Population (19 age groups - Census P25-1103).

Regression lines are calculated using the Joinpoint Regression Program Version 3.0, April 2005, National Cancer Institute.

^b API = Asian/Pacific Islander.

^c AI/AN = American Indian/Alaska Native. Rates for American Indian/Alaska Native are based on the CHSDA (Contract Health Service Delivery Area) counties.

^d Hispanic is not mutually exclusive from whites, blacks, Asian/Pacific Islanders, and American Indians/Alaska Natives. Incidence data for Hispanics are based on NHIA and exclude cases from the Alaska Native Registry. Mortality data for Hispanics exclude cases from Connecticut, Maine, Maryland, Minnesota, New Hampshire, New York, North Dakota, Oklahoma, and Vermont.