

"ALABAMA AGRICULTURE COUNTS" COUNTY DATA



BILL WEAVER, DIRECTOR
USDA, NASS, ALABAMA FIELD OFFICE

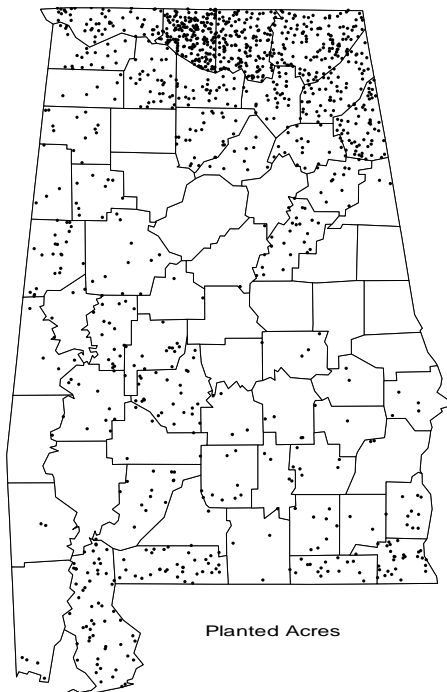
RON SPARKS, COMMISSIONER
ALABAMA DEPT. OF AGRICULTURE AND INDUSTRIES

PO Box 240578, MONTGOMERY, AL 36124-0578

● (800)832-4181

● RELEASED: March 6, 2008

Soybeans Acreage And Production, 2007

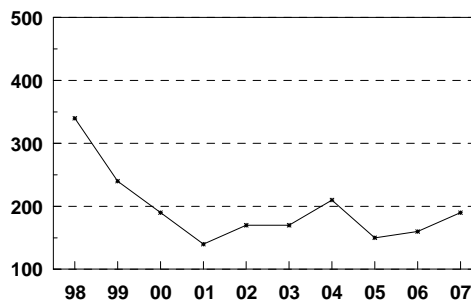


Leading Counties	Bushels
Madison.....	470,000
Limestone.....	450,000
Baldwin.....	330,000
Jackson.....	267,000
DeKalb.....	226,000

Madison County topped all other Alabama counties in soybean production for 2007 with 470,000 bushels. The 21,000 acres harvested by the county's producers averaged 22 bushels per acre.

Other top producing counties for the year were: Limestone, Baldwin, Jackson, and DeKalb.

Acreage Planted the Past Decade
Thousand Acres



Alabama soybean producers harvested a total of 180,000 acres in 2007 up 30,000 acres from the previous year. Yield per acre was 21 bushels. Production totaled 3.8 million bushels and was valued at \$39.7 million.

Alabama ranked 26th in the United States in soybean production. Iowa, Illinois, Minnesota, Indiana, and Ohio were leading states.

Soybeans: Acreage, Yield, and Production, 2006 – 2007

County	2006				2007			
	Planted	Harvested	Yield	Production	Planted	Harvested	Yield	Production
	Acres		Bushels		Acres		Bushels	
Autauga	*	*	*	*	*	*	*	*
Baldwin	4,900	4,900	38	188,000	9,000	9,000	37	330,000
Barbour	*	*	*	*	*	*	*	*
Bibb	*	*	*	*	*	*	*	*
Blount	*	*	*	*	*	*	*	*
Bullock	*	*	*	*	*	*	*	*
Butler	*	*	*	*	*	*	*	*
Calhoun	1,900	1,800	18	33,000	2,000	1,900	18	35,000
Chambers	*	*	*	*	*	*	*	*
Cherokee	6,600	6,100	15	92,000	9,000	8,900	13	114,000
Chilton	*	*	*	*	*	*	*	*
Choctaw	*	*	*	*	*	*	*	*
Clarke	*	*	*	*	*	*	*	*
Clay	*	*	*	*	*	*	*	*
Cleburne	*	*	*	*	*	*	*	*
Coffee	*	*	*	*	*	*	*	*
Colbert	*	*	*	*	3,300	3,200	24	78,000
Conecuh	*	*	*	*	*	*	*	*
Coosa	*	*	*	*	*	*	*	*
Covington	*	*	*	*	*	*	*	*
Crenshaw	*	*	*	*	*	*	*	*
Cullman	4,100	4,000	21	82,000	4,000	3,900	19	73,000
Dale	*	*	*	*	*	*	*	*
Dallas	*	*	*	*	*	*	*	*
DeKalb	11,900	11,500	20	233,000	9,000	8,900	25	226,000
Elmore	*	*	*	*	*	*	*	*
Escambia	*	*	*	*	5,600	4,600	35	162,000
Etowah	1,700	1,600	19	30,000	2,900	2,800	17	48,000
Fayette	2,100	1,700	21	35,000	1,500	1,400	22	31,000
Franklin	*	*	*	*	*	*	*	*
Geneva	*	*	*	*	*	*	*	*
Greene	*	*	*	*	*	*	*	*
Hale	*	*	*	*	*	*	*	*
Henry	*	*	*	*	1,500	1,400	24	33,000
Houston	1,000	800	25	20,000	4,400	3,700	17	62,000
Jackson	22,800	22,200	19	431,000	20,000	19,100	14	267,000
Jefferson	*	*	*	*	*	*	*	*
Lamar	*	*	*	*	*	*	*	*
Lauderdale	8,000	7,900	24	186,000	8,500	8,300	18	150,000
Lawrence	5,400	5,400	21	115,000	5,000	4,800	20	94,000
Lee	*	*	*	*	*	*	*	*
Limestone	17,700	17,200	16	280,000	30,000	29,000	16	450,000
Lowndes	*	*	*	*	*	*	*	*
Macon	*	*	*	*	*	*	*	*
Madison	18,900	18,600	16	291,000	22,000	21,000	22	470,000
Marengo	*	*	*	*	*	*	*	*
Marion	3,000	2,100	14	29,000	2,000	1,800	22	40,000
Marshall	5,900	5,700	18	101,000	5,000	4,900	24	117,000
Mobile	*	*	*	*	*	*	*	*
Monroe	*	*	*	*	*	*	*	*
Montgomery	*	*	*	*	*	*	*	*
Morgan	5,800	5,600	21	115,000	5,000	4,800	19	90,000
Perry	*	*	*	*	*	*	*	*
Pickens	*	*	*	*	*	*	*	*
Pike	*	*	*	*	*	*	*	*
Randolph	*	*	*	*	*	*	*	*
Russell	*	*	*	*	*	*	*	*
Shelby	*	*	*	*	*	*	*	*
St. Clair	*	*	*	*	*	*	*	*
Sumter	*	*	*	*	*	*	*	*
Talladega	*	*	*	*	3,900	3,800	19	73,000
Tallapoosa	*	*	*	*	*	*	*	*
Tuscaloosa	*	*	*	*	1,500	1,400	29	40,000
Walker	*	*	*	*	*	*	*	*
Washington	*	*	*	*	*	*	*	*
Wilcox	*	*	*	*	*	*	*	*
Winston	*	*	*	*	*	*	*	*
State Total	160,000	150,000	20	3,000,000	190,000	180,000	21	3,780,000

*Counties with less than 500 planted acres or insufficient data are included in State Total.