



"ALABAMA AGRICULTURE COUNTS" COUNTY DATA



BILL WEAVER, DIRECTOR
USDA, NASS, ALABAMA FIELD OFFICE

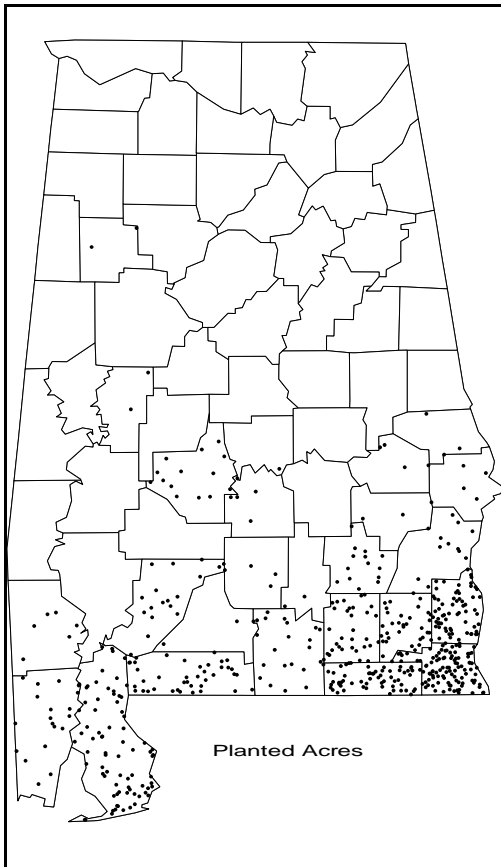
RON SPARKS, COMMISSIONER
ALABAMA DEPT. OF AGRICULTURE AND INDUSTRIES

PO Box 240578, MONTGOMERY, AL 36124-0578

● (800)832-4181

● RELEASED: June 27, 2008

Peanuts Acreage And Production, 2007

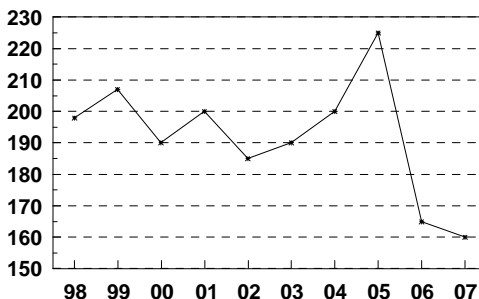


Leading Counties	Pounds
Baldwin.....	80,192,000
Houston.....	65,206,000
Geneva.....	46,748,000
Escambia.....	36,566,000
Henry.....	32,597,000

Baldwin County topped all other Alabama counties in peanut production for 2007 with 80,192,000 pounds. The 22,400 acres harvested by the county's producers averaged 3,580 pounds per acre, which was 980 pounds above the state average.

Other top producing counties for the year were: Houston, Geneva, Escambia, and Henry.

Acreage Planted the Past Decade
Thousand Acres



Alabama peanut producers harvested a total of 157,000 acres in 2007, a decrease of 6,000 acres from the previous year. Yield per acre was 2,600 pounds. Production totaled 408.2 million pounds and was valued at \$73.5 million.

Alabama ranked 3rd in the United States in peanut production. Georgia and Texas were the leading states.

PRSR STD
POSTAGE & FEES PAID
ALABAMA
NATIONAL AGRICULTURAL
STATISTICS SERVICE
PERMIT NO. G-38

USDA, NASS
Alabama
Field
Office



COUNTY DATA (USPS #09-290) IS PUBLISHED
SEMI-MONTHLY APRIL - JUNE
BY ALABAMA FIELD OFFICE
4121 CARMICHAEL RD., STE 200, MONTGOMERY, AL 36124
POSTMASTER: SEND ADDRESS CHANGES TO
ALABAMA COUNTY DATA
P. O. BOX 240578 MONTGOMERY, AL 36124-0578

Peanuts: Acreage, Yield, and Production, 2006 - 2007

County	2006			2007		
	Harvested	Yield	Production	Harvested	Yield	Production
	Acres	Pounds		Acres	Pounds	
Autauga	*	*	*	*	*	*
Baldwin.....	25,000	3,260	81,498,000	22,400	3,580	80,192,000
Barbour	4,160	2,250	9,360,000	3,500	1,960	6,860,000
Bibb	*	*	*	*	*	*
Blount	*	*	*	*	*	*
Bullock.....	*	*	*	*	*	*
Butler	*	*	*	*	*	*
Calhoun.....	*	*	*	*	*	*
Chambers.....	*	*	*	*	*	*
Cherokee.....	*	*	*	*	*	*
Chilton	*	*	*	*	*	*
Choctaw	*	*	*	*	*	*
Clarke	*	*	*	*	*	*
Clay	*	*	*	*	*	*
Cleburne.....	*	*	*	*	*	*
Coffee.....	11,900	2,305	27,430,000	9,500	2,575	24,439,000
Colbert.....	*	*	*	*	*	*
Conecuh.....	*	*	*	*	*	*
Coosa	*	*	*	*	*	*
Covington.....	6,200	3,010	18,662,000	6,200	2,920	18,096,000
Crenshaw	*	*	*	*	*	*
Cullman	*	*	*	*	*	*
Dale	8,500	2,170	18,445,000	10,000	2,270	22,720,000
Dallas	*	*	*	*	*	*
DeKalb	*	*	*	*	*	*
Elmore	*	*	*	*	*	*
Escambia	9,200	3,490	32,124,000	11,700	3,125	36,566,000
Etowah	*	*	*	*	*	*
Fayette	*	*	*	*	*	*
Franklin	*	*	*	*	*	*
Geneva.....	18,200	2,270	41,314,000	17,600	2,655	46,748,000
Greene	*	*	*	*	*	*
Hale	*	*	*	*	*	*
Henry.....	17,700	2,005	35,506,000	17,900	1,820	32,597,000
Houston.....	30,500	2,005	61,213,000	29,700	2,195	65,206,000
Jackson.....	*	*	*	*	*	*
Jefferson	*	*	*	*	*	*
Lamar	*	*	*	*	*	*
Lauderdale	*	*	*	*	*	*
Lawrence.....	*	*	*	*	*	*
Lee	*	*	*	*	*	*
Limestone.....	*	*	*	*	*	*
Lowndes.....	*	*	*	*	*	*
Macon	*	*	*	*	*	*
Madison.....	*	*	*	*	*	*
Marengo	*	*	*	*	*	*
Marion	*	*	*	*	*	*
Marshall.....	*	*	*	*	*	*
Mobile.....	3,520	3,225	11,359,000	5,700	3,825	21,803,000
Monroe	5,500	3,135	17,255,000	5,000	3,130	15,650,000
Montgomery	*	*	*	*	*	*
Morgan	*	*	*	*	*	*
Perry.....	*	*	*	*	*	*
Pickens.....	*	*	*	*	*	*
Pike	4,240	2,000	8,489,000	3,400	1,735	5,900,000
Randolph.....	*	*	*	*	*	*
Russell	*	*	*	*	*	*
Shelby	*	*	*	*	*	*
St. Clair	*	*	*	*	*	*
Sumter.....	*	*	*	*	*	*
Talladega	*	*	*	*	*	*
Tallapoosa.....	*	*	*	*	*	*
Tuscaloosa.....	*	*	*	*	*	*
Walker	*	*	*	*	*	*
Washington	*	*	*	*	*	*
Wilcox.....	*	*	*	*	*	*
Winston	*	*	*	*	*	*
State Total.....	163,000	2,500	407,500,000	157,000	2,600	408,200,000

*Counties with less than 500 planted acres or insufficient data are included in State Total.